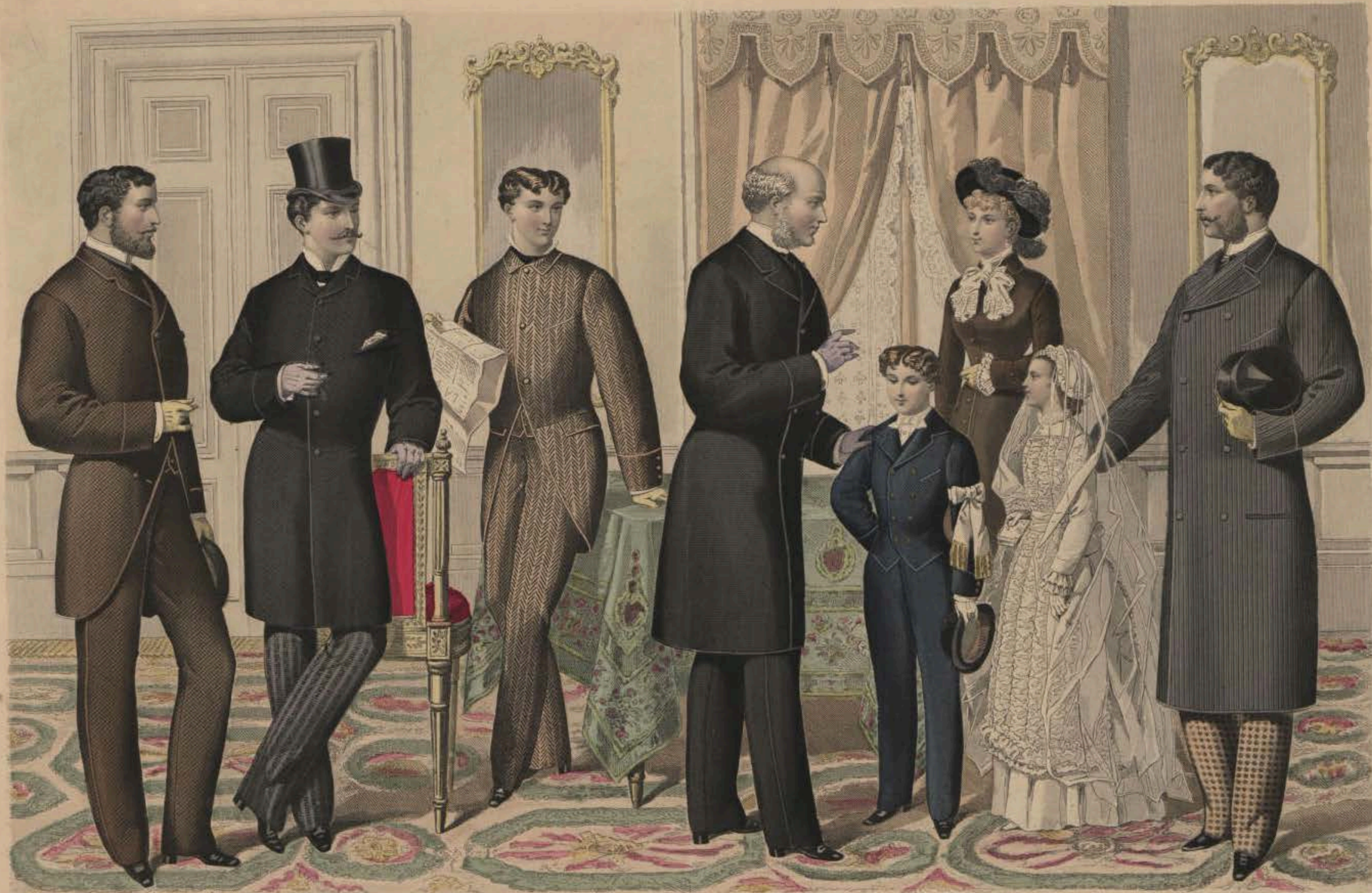




18. Dresden für die
 Universal- und Europäische Modenzeitung.
 Lectures d'Enfants et de Jeunes Dames
 de la M^{lle} ALFRED DEUTSCH, s. de la Villiers
 (FRANCE-EXPORTATION)
 Machines à Coudre
 de BRUNSWICK et C^{ie} 28, r. Richelieu.
 Prix 175^{fr} Facilité de Paiement.

LE PROGRÈS
 MODES DE PARIS POUR LA GAZETTE EUROPEENNE DES MODES
 Paris, rue d'Hauteville, 42.
 Draperies et Nouveautés de la M^{lle} I. Roquet, 35, rue Coquillière.
 Laine, Filés, Cotons, Aiguilles pour Machines à Coudre Amédée Charpentier, B^{te} Bastropol, 76.

167. Juillet 1860
 Les meilleures machines
 à coudre sont celles de
 'HOWE'
 25, Boulevard Sebastopol, 48
 PARIS
 dépôt dans la Maison
 de chaque ville.



11 Dresse für ein
Universal und Europäische Bekleidung

Imp. Lamoignon

Costumes d'Enfants et de Jeunes Gens
de la M^{re} ALPHONSE DEUTSCH, 8, rue de la Villière.
(FRANCE-EXPORTATION)

Machines à Coudre
de BRUNSWICK et de 1^{re} 2^{de} 3^{de} Richelieu.
Prix 15^{fr} (Facilité de Paiement)

LE PROGRÈS

MODES DE PARIS POUR LA GAZETTE EUROPÉENNE DES MODES

Paris, 12, rue d'Hauteville

Drapiers à Nouveautés de la M^{re} I. ROQUET, rue Coquillière, N^o 35
Sous-Fils, Cotons, Angoules, pour Machines à Coudre Amédec Charpentier, B^{is} Sébastopol, 76

363 - Mars 1880

Les meilleures machines
à Coudre sont celles de
"HOWE"

48, Boulevard Sébastopol, 48
PARIS
Dépôt dans la 1^{re} maison
de chaque ville



IN Dresden für die
 Universal und Europäische Modenzeitung

Imp. Lameroux

Costumes d'Enfants et de Jeunes Dames
 de la M^{me} ALFRED DEVISON R. de la Vallée.
 (FRANCE-EXPORTATION)

Machines à Coudre
 de BAUNSWICK et C^o 29, r. Richelieu.
 Prix 175^{fr} (Facilité de Paiement)

LE PROGRÈS

MODES DE PARIS POUR LA GAZETTE EUROPÉENNE DES MODES

Paris, 42, rue d'Hauteville

Draperies et Nouveautés de la M^{me} I. Roguet, 35, rue Coquillière.
 Soie Tels. Colons. Aiguilles pour Machines à Coudre Amédée Charpentier 76, R^{ue} Sébastopol.

362. Février 1868

Les meilleures machines à
 coudre sont celles de
 "HOWE"

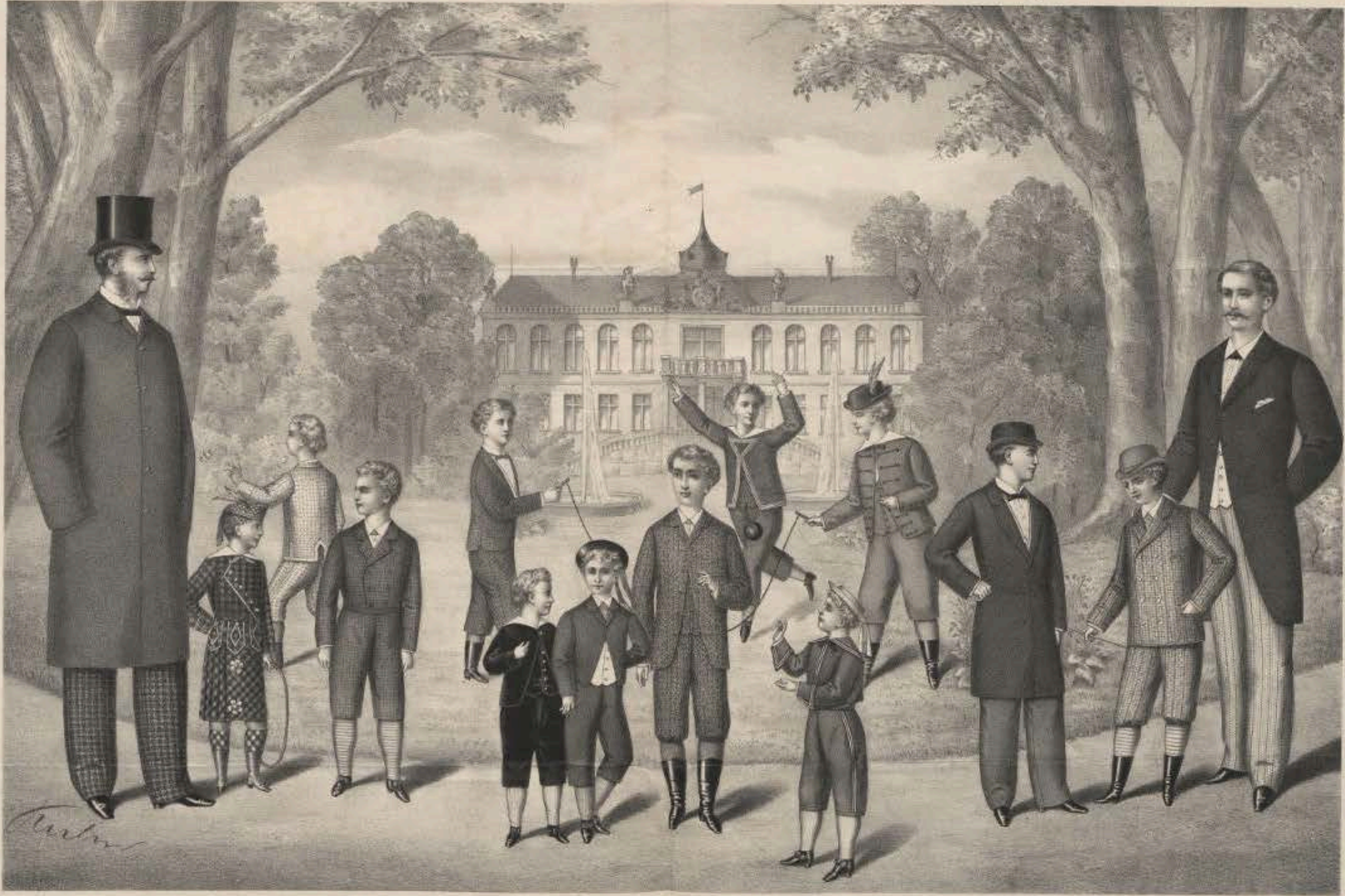
88, Boulevard Sébastopol, 18
 PARIS
 dépôt dans le 1^{er} magasin
 de chaque ville.



MAERZ.

DER BEOBACHTER.
EXPEDITION DER EUROPÄISCHEN MODEN ZEITUNG

1886.



IX. Jahrgang, Nov. 1860.

Verlag des Verlags-Bureau's

Verlag Expedition d. H. Schneider-Druckung (H. Ebn) Berlin, 311

KNABEN - GÄRDEROBE.

Herbeigeführt von der
BERLINER - SCHNEIDER - AKADEMIE.



Louis XV Peasant

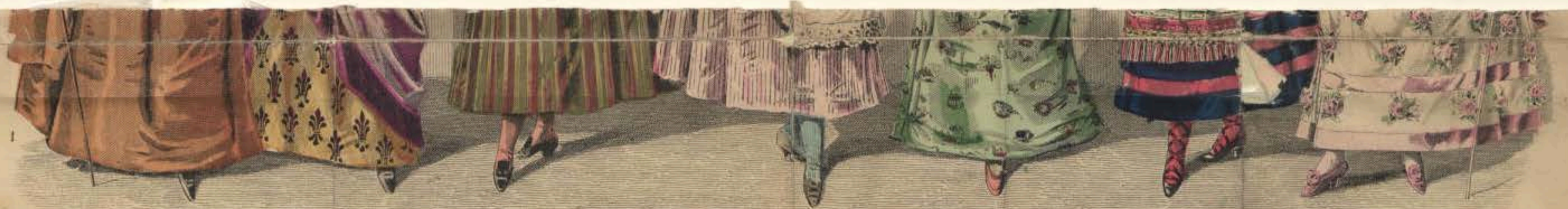
Little Imp

Cordon Bleu

Queen of Hearts

Tyrolean Girl





Lydia Languish

Lady Anne

Serving Maid

Flower Girl

Japanese Maiden

Italian

Watteau Stepherias



THE YOUNG LADIES' JOURNAL

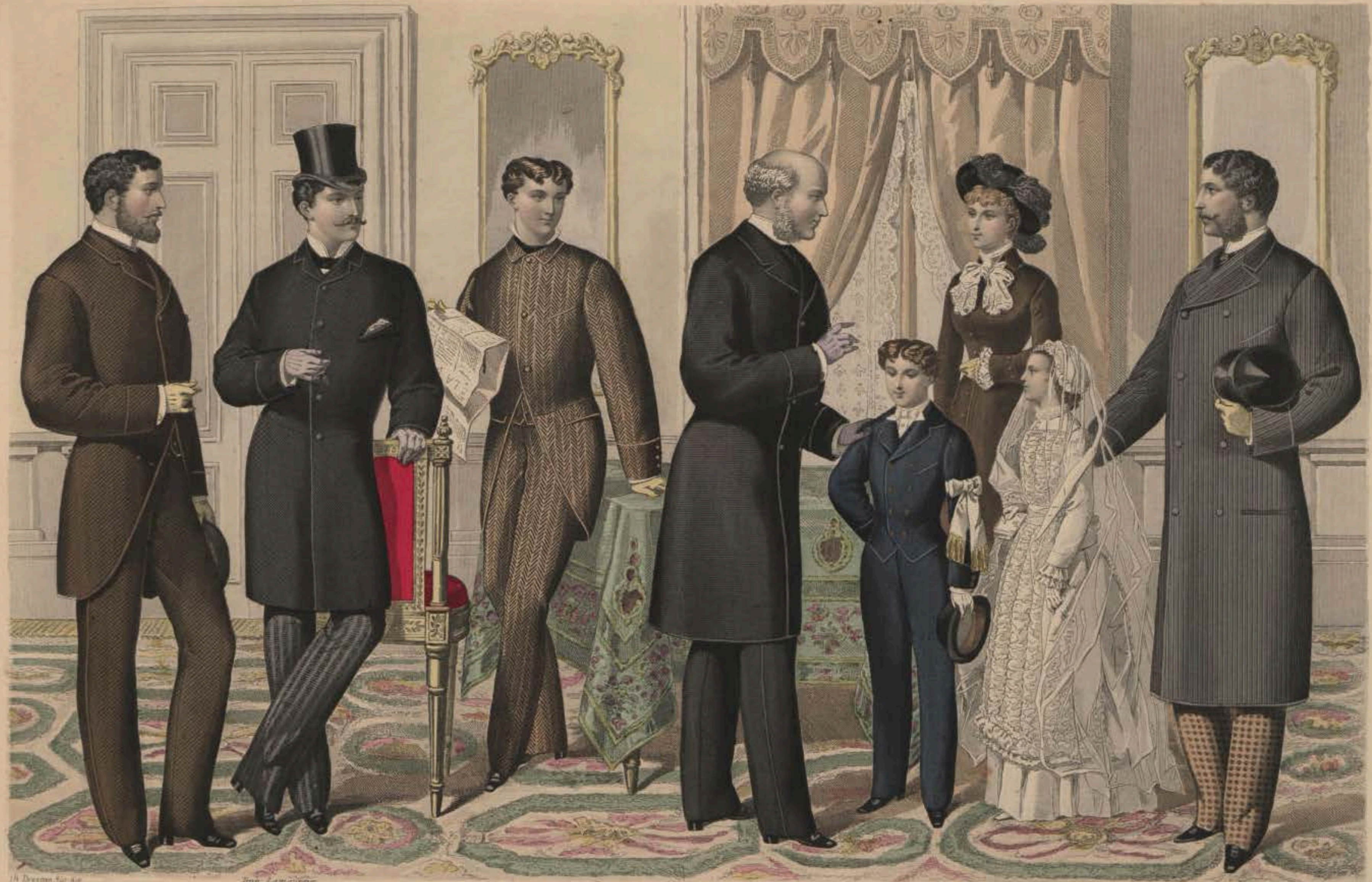
COPYRIGHT No. 25 OF THE NEW TRIPLE PARIS FASHION PLATES

COPYRIGHT

D. NICHOLSON & COMPANY 50, 51 AND 52, ST. PAUL'S CHURCHYARD CORNER OF CHEAPSIDE LONDON SILK MERCERS TO THE QUEEN

& Outfitters to all parts of the World supply all the Goods represented in the above illustrations and from whom prices and particulars may be had gratis upon application

1000 PATTERNS OF NEWEST SILK AND COTTON MATERIALS ALSO SENT POST FREE



In Dresden bei der
 Universal und Europäische Moden-
 Ausstellung
 des Hrn. ALFRED DEUTSCH, 8. u. de la Villiers.
 (FRANKE-EXPORTATION)
 Modisten à Londres
 de BONDREUX et C^{ie} 29 r. Richelieu.
 Prix 175^{fr}. (Mobilier de Paris)

Sup. Lancôme

LE PROGRÈS

MODES DE PARIS POUR LA GAZETTE EUROPÉENNE DES MODES
 N^o 42, rue d'Anvers

Draperies et Nouveautés de la M^{lle} I. Roquet, rue Coquillière, N^o 35
 S^{rs} Fils, Cotons, Aiguilles pour Machines à Coudre Amé des Charpentier, B^{is} Sébastopol 76

363 - Mars 1860
 Les meilleures machines
 à coudre sont celles de
 'HOWE'
 40, Boulevard Sébastopol, 40
 PARIS
 Agit dans la 1^{re} maison
 de chaque ville



APRIL,

DER BEOBSACHTER.

EXPOSITION DER EUROPÄISCHEN MODEN ZEITUNG.

1880.



Deposité de l'Etat le 10 Mars 1867

N° 116. Février 1867

LE PROGRÈS

FOR THE **OBSERVER OF FASHION, NEW-YORK**

Drapiers: Gilet et Haute Nouveauté de la M^{re} Dubois, 27, 28, 29, 30, 31, 32, 33, 34, 35, 36, 37, 38, 39, 40, 41, 42, 43, 44, 45, 46, 47, 48, 49, 50, 51, 52, 53, 54, 55, 56, 57, 58, 59, 60, 61, 62, 63, 64, 65, 66, 67, 68, 69, 70, 71, 72, 73, 74, 75, 76, 77, 78, 79, 80, 81, 82, 83, 84, 85, 86, 87, 88, 89, 90, 91, 92, 93, 94, 95, 96, 97, 98, 99, 100, 101, 102, 103, 104, 105, 106, 107, 108, 109, 110, 111, 112, 113, 114, 115, 116, 117, 118, 119, 120, 121, 122, 123, 124, 125, 126, 127, 128, 129, 130, 131, 132, 133, 134, 135, 136, 137, 138, 139, 140, 141, 142, 143, 144, 145, 146, 147, 148, 149, 150, 151, 152, 153, 154, 155, 156, 157, 158, 159, 160, 161, 162, 163, 164, 165, 166, 167, 168, 169, 170, 171, 172, 173, 174, 175, 176, 177, 178, 179, 180, 181, 182, 183, 184, 185, 186, 187, 188, 189, 190, 191, 192, 193, 194, 195, 196, 197, 198, 199, 200, 201, 202, 203, 204, 205, 206, 207, 208, 209, 210, 211, 212, 213, 214, 215, 216, 217, 218, 219, 220, 221, 222, 223, 224, 225, 226, 227, 228, 229, 230, 231, 232, 233, 234, 235, 236, 237, 238, 239, 240, 241, 242, 243, 244, 245, 246, 247, 248, 249, 250, 251, 252, 253, 254, 255, 256, 257, 258, 259, 260, 261, 262, 263, 264, 265, 266, 267, 268, 269, 270, 271, 272, 273, 274, 275, 276, 277, 278, 279, 280, 281, 282, 283, 284, 285, 286, 287, 288, 289, 290, 291, 292, 293, 294, 295, 296, 297, 298, 299, 300, 301, 302, 303, 304, 305, 306, 307, 308, 309, 310, 311, 312, 313, 314, 315, 316, 317, 318, 319, 320, 321, 322, 323, 324, 325, 326, 327, 328, 329, 330, 331, 332, 333, 334, 335, 336, 337, 338, 339, 340, 341, 342, 343, 344, 345, 346, 347, 348, 349, 350, 351, 352, 353, 354, 355, 356, 357, 358, 359, 360, 361, 362, 363, 364, 365, 366, 367, 368, 369, 370, 371, 372, 373, 374, 375, 376, 377, 378, 379, 380, 381, 382, 383, 384, 385, 386, 387, 388, 389, 390, 391, 392, 393, 394, 395, 396, 397, 398, 399, 400, 401, 402, 403, 404, 405, 406, 407, 408, 409, 410, 411, 412, 413, 414, 415, 416, 417, 418, 419, 420, 421, 422, 423, 424, 425, 426, 427, 428, 429, 430, 431, 432, 433, 434, 435, 436, 437, 438, 439, 440, 441, 442, 443, 444, 445, 446, 447, 448, 449, 450, 451, 452, 453, 454, 455, 456, 457, 458, 459, 460, 461, 462, 463, 464, 465, 466, 467, 468, 469, 470, 471, 472, 473, 474, 475, 476, 477, 478, 479, 480, 481, 482, 483, 484, 485, 486, 487, 488, 489, 490, 491, 492, 493, 494, 495, 496, 497, 498, 499, 500, 501, 502, 503, 504, 505, 506, 507, 508, 509, 510, 511, 512, 513, 514, 515, 516, 517, 518, 519, 520, 521, 522, 523, 524, 525, 526, 527, 528, 529, 530, 531, 532, 533, 534, 535, 536, 537, 538, 539, 540, 541, 542, 543, 544, 545, 546, 547, 548, 549, 550, 551, 552, 553, 554, 555, 556, 557, 558, 559, 560, 561, 562, 563, 564, 565, 566, 567, 568, 569, 570, 571, 572, 573, 574, 575, 576, 577, 578, 579, 580, 581, 582, 583, 584, 585, 586, 587, 588, 589, 590, 591, 592, 593, 594, 595, 596, 597, 598, 599, 600, 601, 602, 603, 604, 605, 606, 607, 608, 609, 610, 611, 612, 613, 614, 615, 616, 617, 618, 619, 620, 621, 622, 623, 624, 625, 626, 627, 628, 629, 630, 631, 632, 633, 634, 635, 636, 637, 638, 639, 640, 641, 642, 643, 644, 645, 646, 647, 648, 649, 650, 651, 652, 653, 654, 655, 656, 657, 658, 659, 660, 661, 662, 663, 664, 665, 666, 667, 668, 669, 670, 671, 672, 673, 674, 675, 676, 677, 678, 679, 680, 681, 682, 683, 684, 685, 686, 687, 688, 689, 690, 691, 692, 693, 694, 695, 696, 697, 698, 699, 700, 701, 702, 703, 704, 705, 706, 707, 708, 709, 710, 711, 712, 713, 714, 715, 716, 717, 718, 719, 720, 721, 722, 723, 724, 725, 726, 727, 728, 729, 730, 731, 732, 733, 734, 735, 736, 737, 738, 739, 740, 741, 742, 743, 744, 745, 746, 747, 748, 749, 750, 751, 752, 753, 754, 755, 756, 757, 758, 759, 760, 761, 762, 763, 764, 765, 766, 767, 768, 769, 770, 771, 772, 773, 774, 775, 776, 777, 778, 779, 780, 781, 782, 783, 784, 785, 786, 787, 788, 789, 790, 791, 792, 793, 794, 795, 796, 797, 798, 799, 800, 801, 802, 803, 804, 805, 806, 807, 808, 809, 810, 811, 812, 813, 814, 815, 816, 817, 818, 819, 820, 821, 822, 823, 824, 825, 826, 827, 828, 829, 830, 831, 832, 833, 834, 835, 836, 837, 838, 839, 840, 841, 842, 843, 844, 845, 846, 847, 848, 849, 850, 851, 852, 853, 854, 855, 856, 857, 858, 859, 860, 861, 862, 863, 864, 865, 866, 867, 868, 869, 870, 871, 872, 873, 874, 875, 876, 877, 878, 879, 880, 881, 882, 883, 884, 885, 886, 887, 888, 889, 890, 891, 892, 893, 894, 895, 896, 897, 898, 899, 900, 901, 902, 903, 904, 905, 906, 907, 908, 909, 910, 911, 912, 913, 914, 915, 916, 917, 918, 919, 920, 921, 922, 923, 924, 925, 926, 927, 928, 929, 930, 931, 932, 933, 934, 935, 936, 937, 938, 939, 940, 941, 942, 943, 944, 945, 946, 947, 948, 949, 950, 951, 952, 953, 954, 955, 956, 957, 958, 959, 960, 961, 962, 963, 964, 965, 966, 967, 968, 969, 970, 971, 972, 973, 974, 975, 976, 977, 978, 979, 980, 981, 982, 983, 984, 985, 986, 987, 988, 989, 990, 991, 992, 993, 994, 995, 996, 997, 998, 999, 1000.

Paris, Rue des Petites Ecuries, 27.

MODES DE PARIS par la Gazette des Modes Européennes, 1867.



LE PROGRES, FOR THE OBSERVER OF FASHION, NEW-YORK

N° 127. Mars 1862.

*Draperie: Gilet et Veste Nouveautés de la M^{re} Dubou, 133, r. de la Harpe, 133, r. de la Harpe, Boutons et Passamaneries de Turenne, 2, Montmartre, 2, Machines à coudre?
 Système Longis de Callebaut, 1, de Valenciennes, 95, Chemises, Cravates de la M^{re} de PARIS, 5, Bayen, 33, de Sauter, Chapellerie de la M^{re} Vene, Ducou, 95, et 95, 2, Richelieu, Chaussures de la M^{re} Debill,
 P. Jeffrey, 16, Cravate de Chevre et Coiffures de tout, 53, de P. Souverain, 1, de la M^{re} Dubou, 100, 2, de Lazard, P. Souverain pour parf, 1, de la M^{re} Debill,
 2, rue des Petites Ecuries, 19*

MODES DE PARIS avec les plus belles NOUVEAUTÉS
 Publié par l'éditeur Universel des Modes à Paris



Imp. L. Commaire & Co. Paris 20

269. Mai. 1872

LE PROGRÈS

MODES DE PARIS POUR L'ACADEMIE EUROPEENNE DES MODES

*14. Dames für die
Touren mit europäische Modemittag*

*Machines à Coudre
de RICHARD & Co. 29 - Richelieu.
Paris 20. Facilité de Paiement.*

*Drapers Gilets & Hauts Nouveautés de Blanchet et Provost 132 & St. Martin Chemises, Gilets & Cravates du TRENIX S. Hayem 101 & St. Louis Chapelliers
de René Esnau & Richelieu 91. Toie Filo Cottons. Aiguilles pour Machines à Coudre Amédée Charpentier Boul. Sébastopol 76
Paris 19. rue des Sautes Courtes*

*Machines à Coudre Américaines
ELIAS HOWE, 39 New-York
Dépôt
à Paris 44. Boulevard Sébastopol
DEPOT CENTRAL pour L'ALLEMAGNE
à Berlin 17. Jerusalem Strasse*



B
Léop. Martin.

L'ÉLÉGANT & LE LION

Reunis.
Journal des Tailleurs.

17 août 1870.

Par le Panoramas de, Modès à Neuchâtel, Suisse.



Deliquis. Lith. Imp. n. 204. No. Par. P. M. 11

LES MODES FRANÇAISES. JOURNAL DES TAILLEURS.
Publié par l'Académie Européenne des Modes.
A DRESDE.

1868



LE PROGRÈS

MODES DE PARIS POUR L'ACADEMIE UNIVERSELLE DES MODES

*Drapes Gilet et hauts Nouveautés de la M^{me} Dubou 1^{re} 333 & P. Martin Boutons et Sarrasentures de Huteau & Montmartre 72 Chemise
 Cils et Coiffes de la M^{me} du PHENIX S. Lavon aise. Str. du Sentier Chapellerie de la M^{me} Roux fineau 101 et 102 Richelieu Chaussures de la M^{me} Dubail 1^{re} 101
 Coiffe de Cheveux et Coiffures de Coiffes de la M^{me} P. Bouvonnere Parfums de la M^{me} Dubou Joux & de Bonnard P. Hamme 1^{re} 101*

*En Ventes Par les
 Universel et L'Europe des Modes*

*at New York for the
 Observer of the Balance*



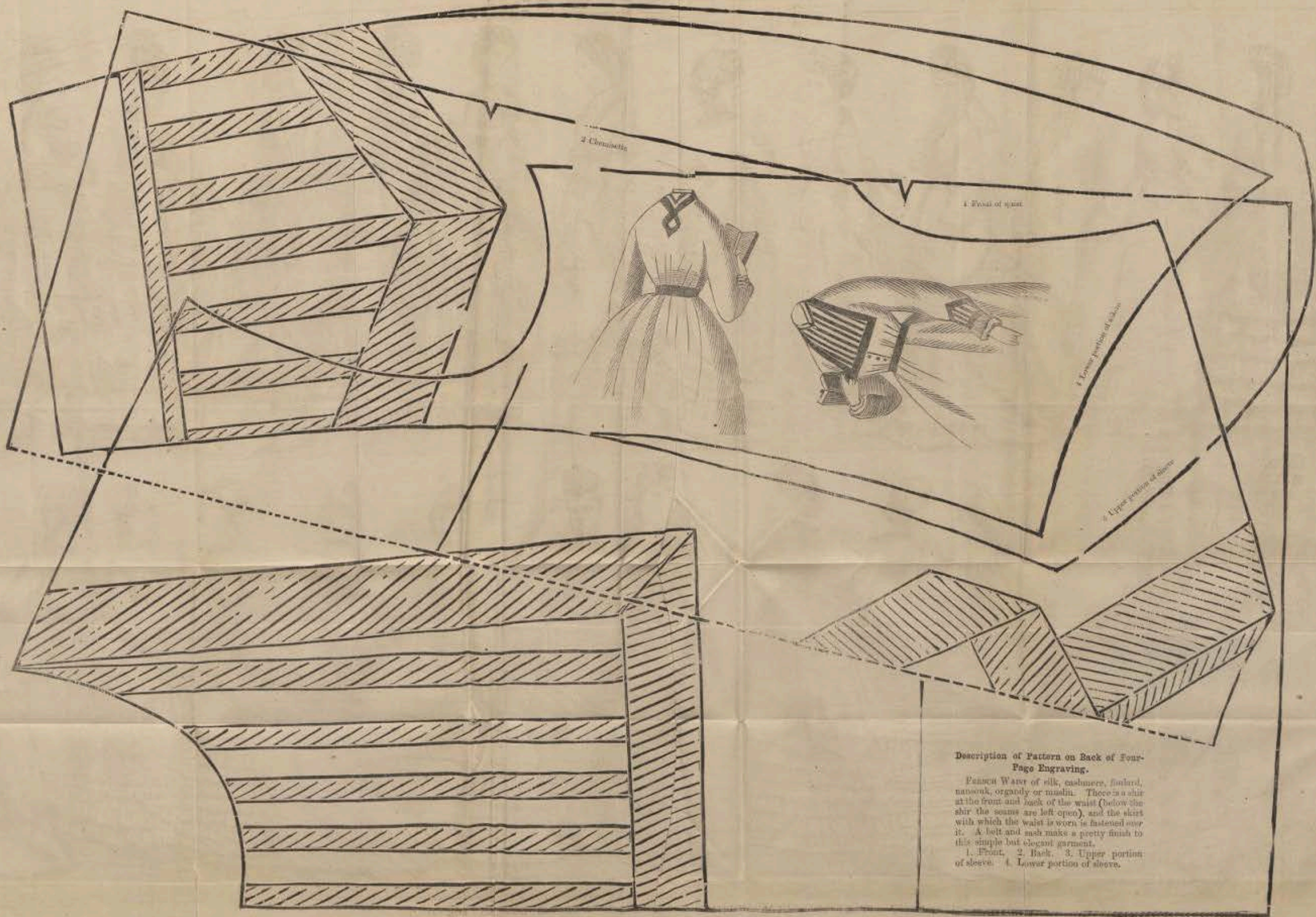
L'OBSERVATEUR DES MODES,

publié à Paris par l'Académie Impériale des Modes.

Mars 1859



THE LATEST STYLES OF DINNER, EVENING, CARRAGE AND WALKING DRESSES FOR JULY.



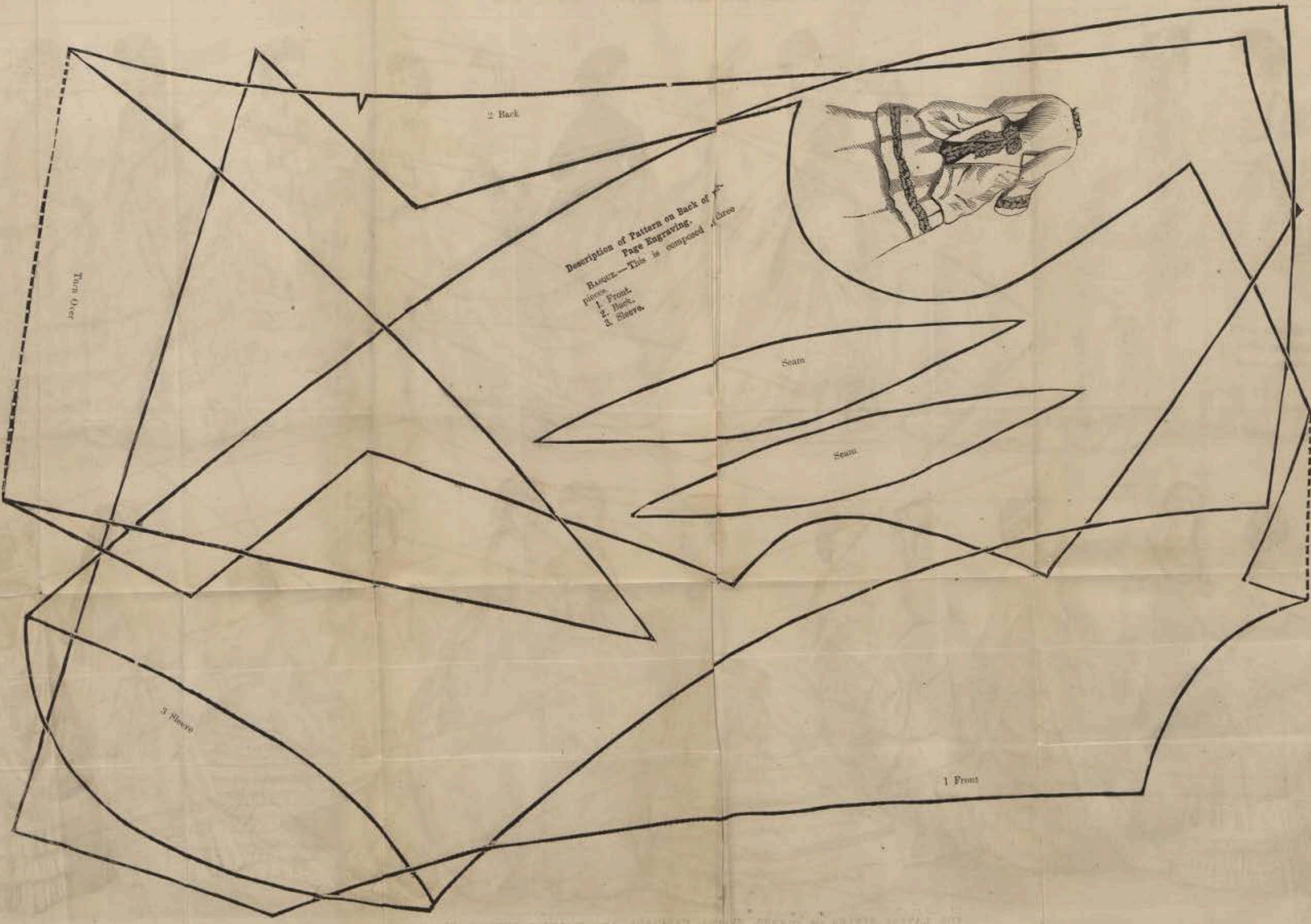
**Description of Pattern on Back of Four-
Page Engraving.**

Pencil Waist of silk, cashmere, flannel, nanook, organza or muslin. There is a shirt at the front and back of the waist (below the shirt the seams are left open), and the skirt with which the waist is worn is fastened over it. A belt and sash makes a pretty finish to this simple but elegant garment.

1. Front. 2. Back. 3. Upper portion of sleeve. 4. Lower portion of sleeve.



THE LATEST STYLES OF DINNER, EVENING, CARRIAGE AND WALKING DRESSES FOR AUGUST



2 Back

Description of Pattern on Back of
 Page Engraving.
 BASQUE—This is composed of three
 pieces.
 1. Front.
 2. Back.
 3. Sleeve.

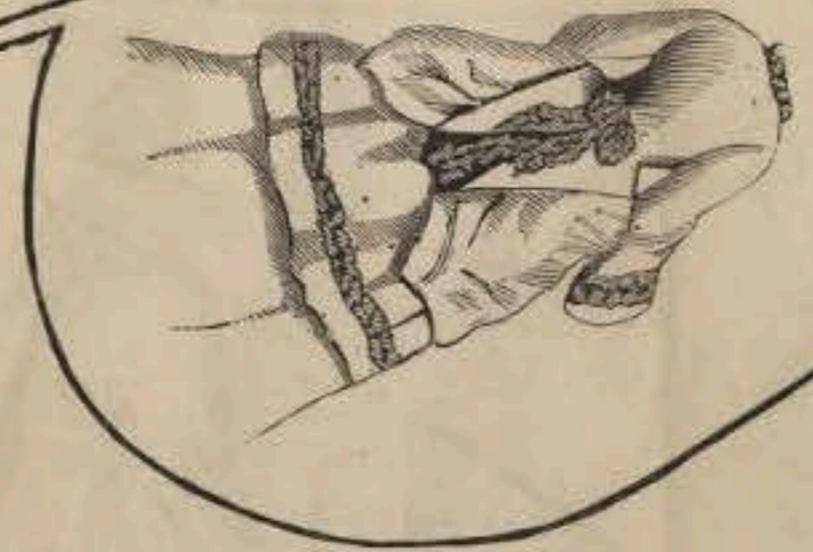
Seam

Seam

1 Front

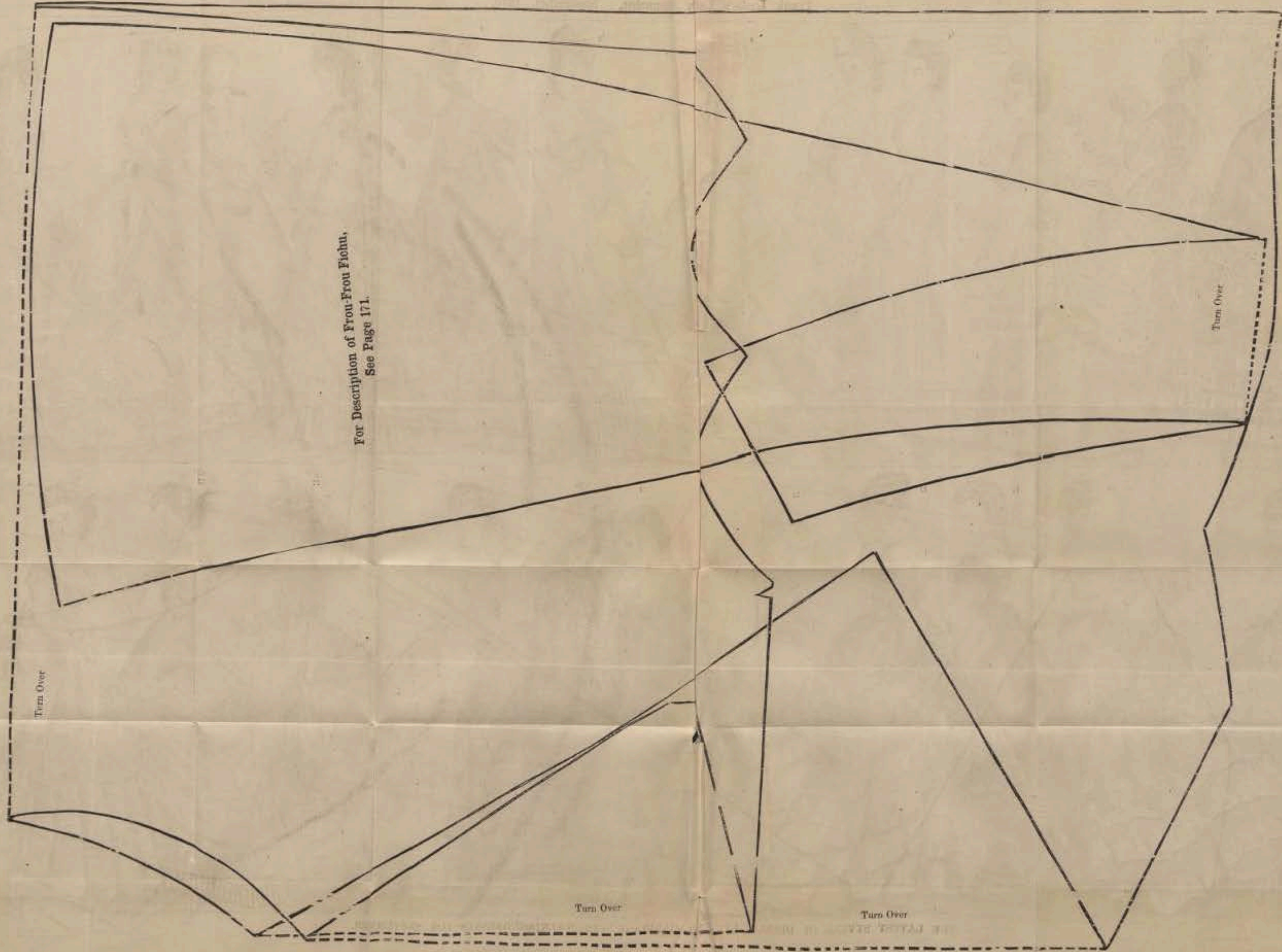
Turn Over

3 Sleeve





THE LATEST STYLES OF DINNER, EVENING, CARRIAGE AND WALKING DRESSES FOR SEPTEMBER.



For Description of Frou-Frou Fichu.
See Page 171.

Turn Over

Turn Over

Turn Over

Turn Over



THE LATEST STYLES OF DINNER, EVENING CARRIAGE AND WALKING DRESSES FOR NOVEMBER.

Turn Over

1 Back

Description of Pattern on Back of Four-Page Engraving.

CASQUE BASQUIN.—This pattern consists of five pieces. The fronts are open—the basques form points. The sides and back are square. No. 1. Back. 2. Side-piece. 3. Front. 4. Collar. 5. Sleeve.

4 Collar

3 Front

Turn Over

Turn Over

5 Sleeve



FIG. 2.



Fig. 8.



FIG. 3.



Fig. 9.



FIG. 4.

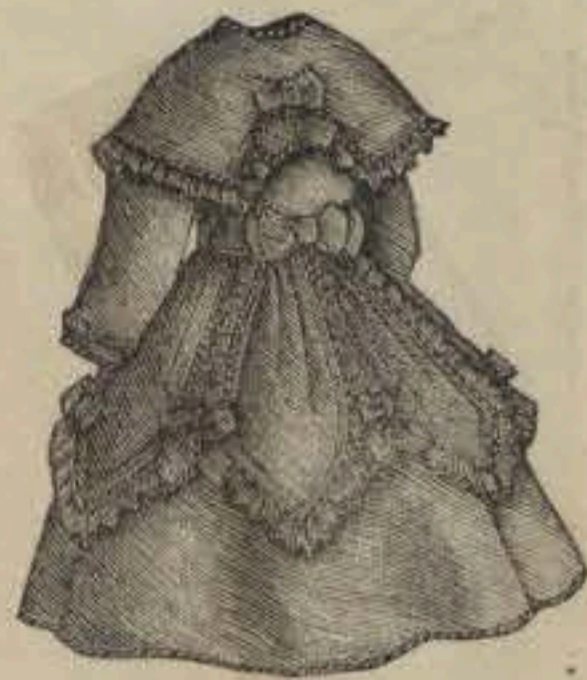


Fig. 10.



FIG. 5.



Fig. 11.



FIG. 6.



Fig. 6.

For Description of Engravings on this Sheet see Fashion Department.

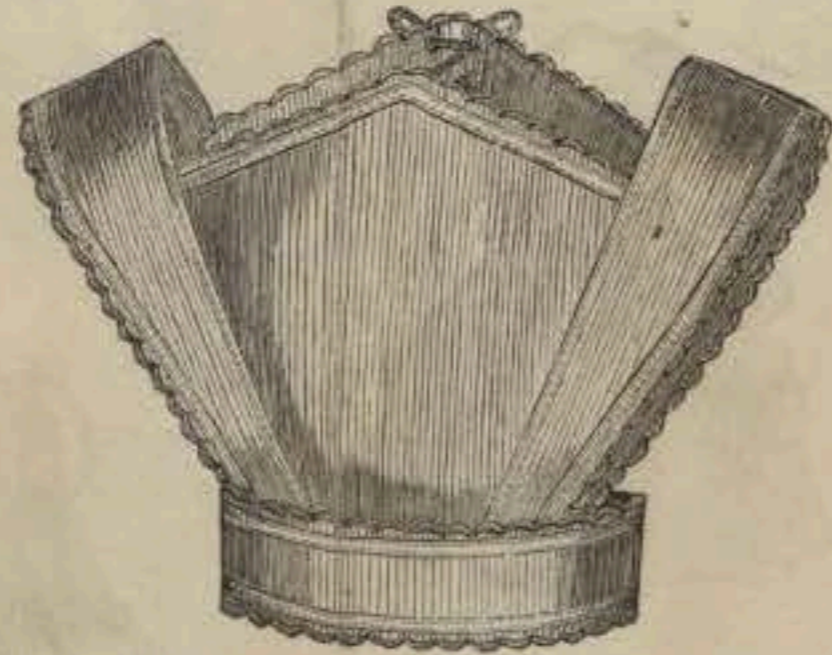


Fig. 7.

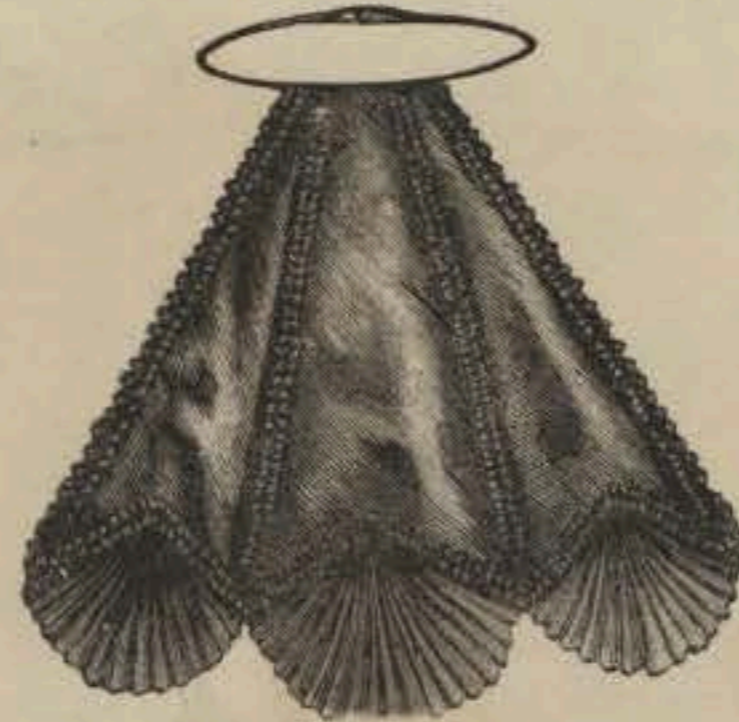


Fig. 8.



Fig. 9.



Fig. 10.



Fig. 1.



Fig. 2.



Fig. 3.



Fig. 4.



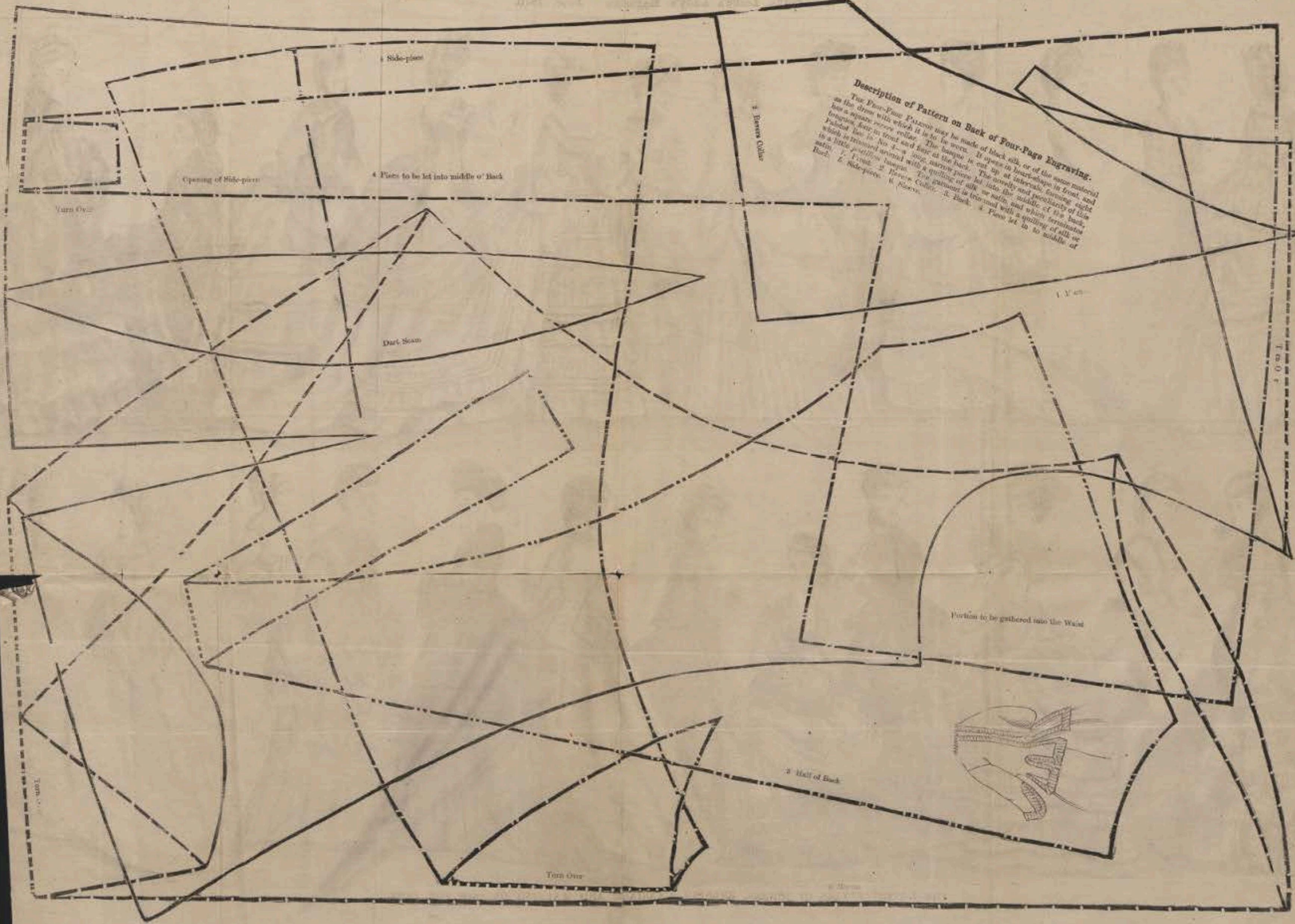
Fig. 5.



Fig. 11.



THE LATEST STYLES OF DINNER, EVENING, CARRIAGE AND WALKING DRESSES FOR JUNE.



Description of Pattern on Back of Four-Page Engraving.
 The Four-Page Pattern may be made of black silk, or of the same material as the dress with which it is to be worn. It opens in hour-shape in front, and has a square reverse collar. The bodice is cut up at intervals, forming eight triangles, four in front and four at the back. The novelty and peculiarity of this Pattern, has to do with No. 3—a long, narrow piece, which is triangular at the top, which is triangular around with a quilting of silk, or satin, and which terminates in a little pointed loop. The pattern is triangular with a quilting of silk or satin. 1. Front. 2. Reverse Collar. 3. Back. 4. Piece let in to middle of Back. 5. Side-piece. 6. Skirt.





THE LATEST STYLES OF DINNER, EVENING, CARRIAGE AND WALKING DRESSES FOR MAY.

7. Half of waist-band

C

6. Shoulder strap

Description of Pattern on Back of Four-Page Engraving.

DRESS FOR A CHILD OF FROM TWO TO FOUR YEARS.

It may be made of *poplin*, muslin or alpaca. It is trimmed with bias pieces, bound. The bias pieces down the front are ornamented on the inner side with a ruff. The dress opens on the left side, where it is fastened by hooks-and-eyes. The epaulet is kept in place on the left shoulder by buttons.

1. Half of front. 2. Half of back. 3. Side-piece of back. 4. Side-piece of front. 5. Sleeve. 6. Shoulder-strap. 7. Half of waist-band. 8. Bias piece for front of skirt. 9. Skirt.

3. Side-piece of Back

2. Half of back

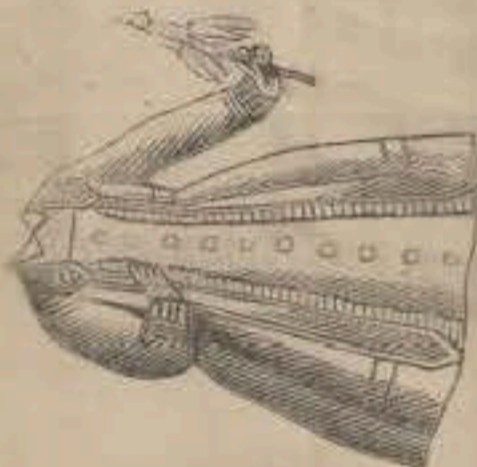
4. Side-piece of Front

5. Sleeve

8. Bias piece front of Skirt

1. Half of Front

9. Skirt





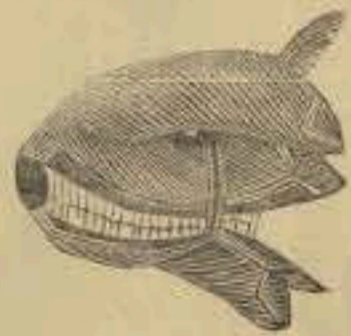
THE LATEST STYLES OF DINNER, EVENING, CARRIAGE AND WALKING DRESSES FOR APRIL.

Description of Pattern on back of Four-Page Engraving.

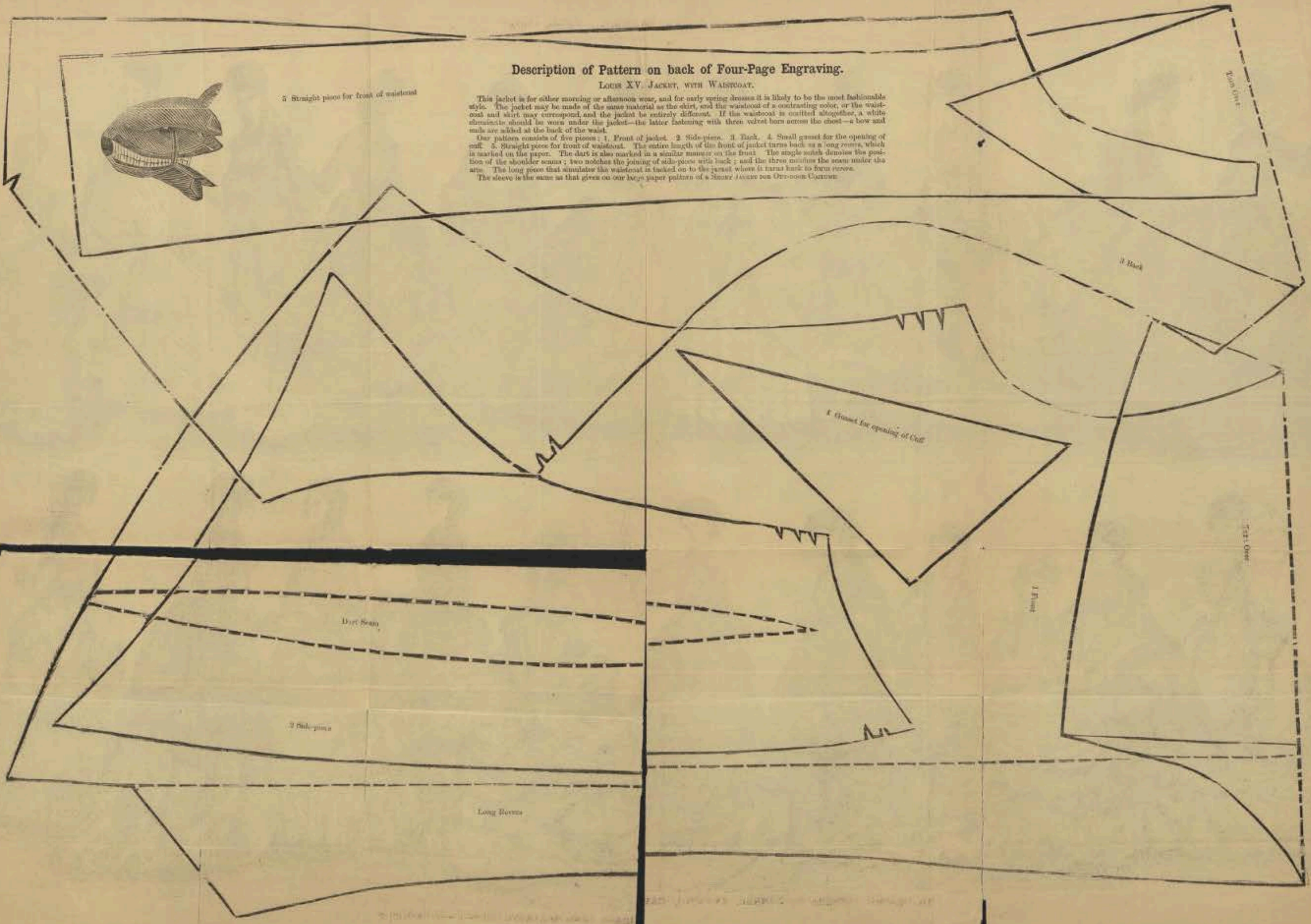
LEUIS XV. JACKET, WITH WAISTCOAT.

This jacket is for either morning or afternoon wear, and for early spring dresses it is likely to be the most fashionable style. The jacket may be made of the same material as the skirt, and the waistcoat of a contrasting color, or the waistcoat and skirt may correspond, and the jacket be entirely different. If the waistcoat is omitted altogether, a white chemise should be worn under the jacket—the latter fastening with three velvet horns across the chest—a bow and studs are added at the back of the waist.

Our pattern consists of five pieces: 1. Front of jacket. 2. Side-piece. 3. Back. 4. Small gusset for the opening of cuff. 5. Straight piece for front of waistcoat. The entire length of the front of jacket turns back as a long revers, which is marked on the paper. The dart is also marked in a similar manner on the front. The single notch denotes the position of the shoulder seams; two notches the joining of side-piece with back; and the three notches the seam under the arm. The long piece that simulates the waistcoat is tacked on to the jacket where it turns back to form revers. The sleeve is the same as that given on our large paper pattern of a *Smock Jacket* for *Overnoon* Coats.

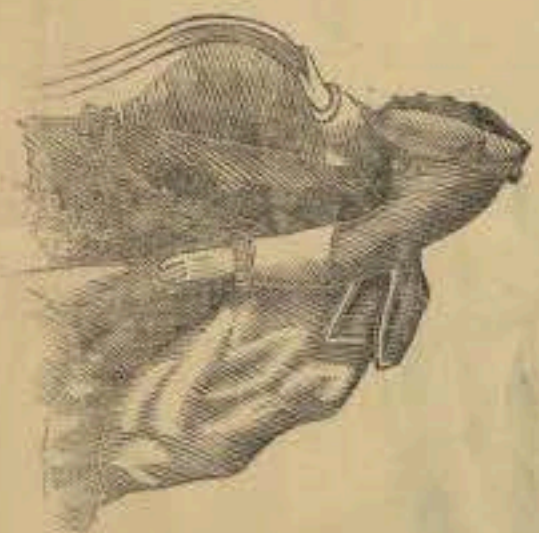


5 Straight piece for front of waistcoat





THE LATEST STYLES OF DINNER, EVENING, CARRIAGE AND WALKING DRESSES FOR MARCH.

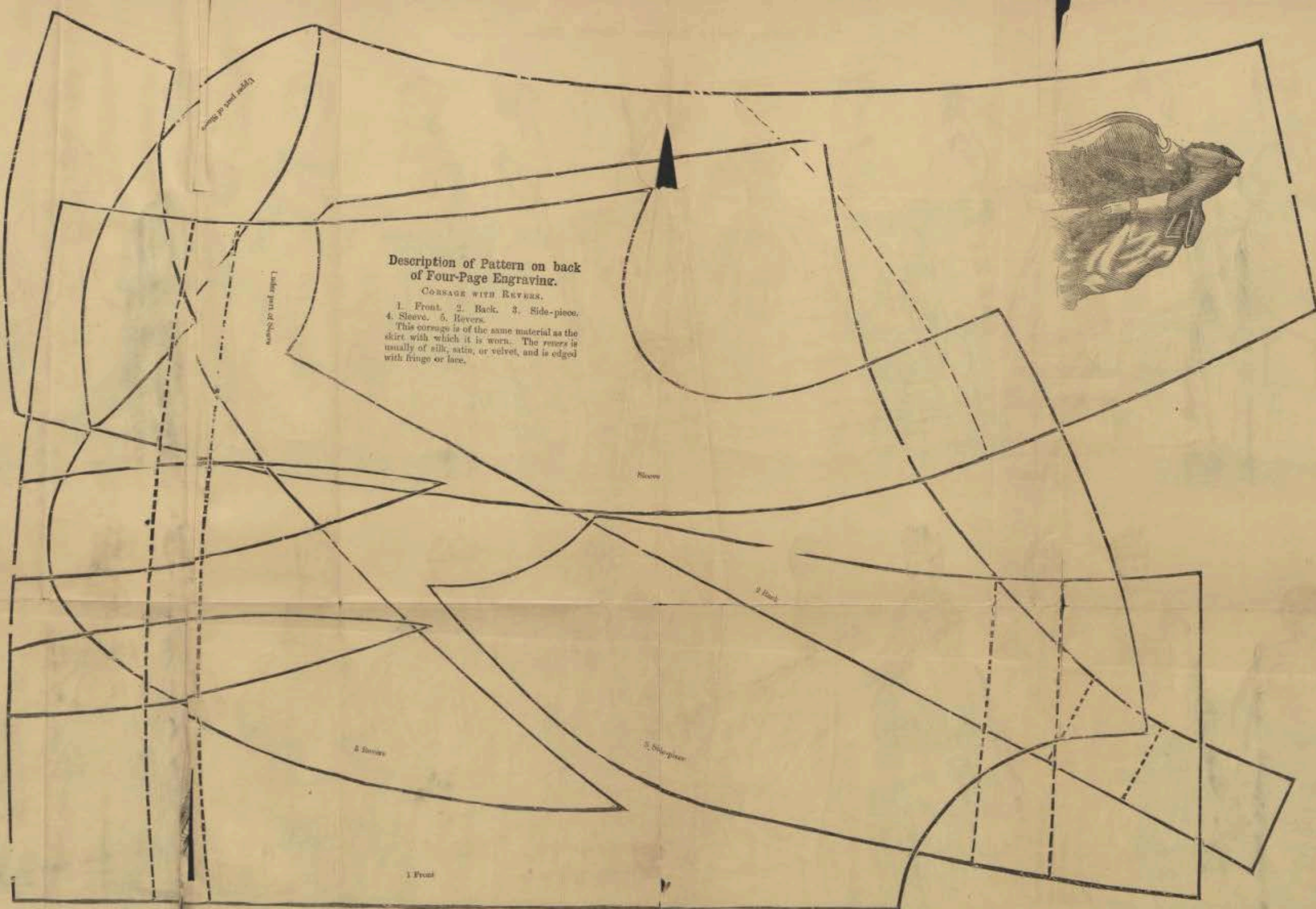


**Description of Pattern on back
of Four-Page Engraving.**

CORSET WITH REVERS.

1. Front. 2. Back. 3. Side-piece.
4. Sleeve. 5. Revers.

This corset is of the same material as the skirt with which it is worn. The revers is usually of silk, satin, or velvet, and is edged with fringe or lace.





THE LATEST STYLES OF DINNER, EVENING, CARRIAGE AND WALKING DRESSES FOR FEBRUARY.

**Description of Pattern on the back of
Four-Page Engraving.**

**OVERDRESS FOR A CHILD OF FROM TWO
TO FOUR YEARS.**

1. Front. 2. Side-piece, front. 3. Side-
piece, back. 4. Back.

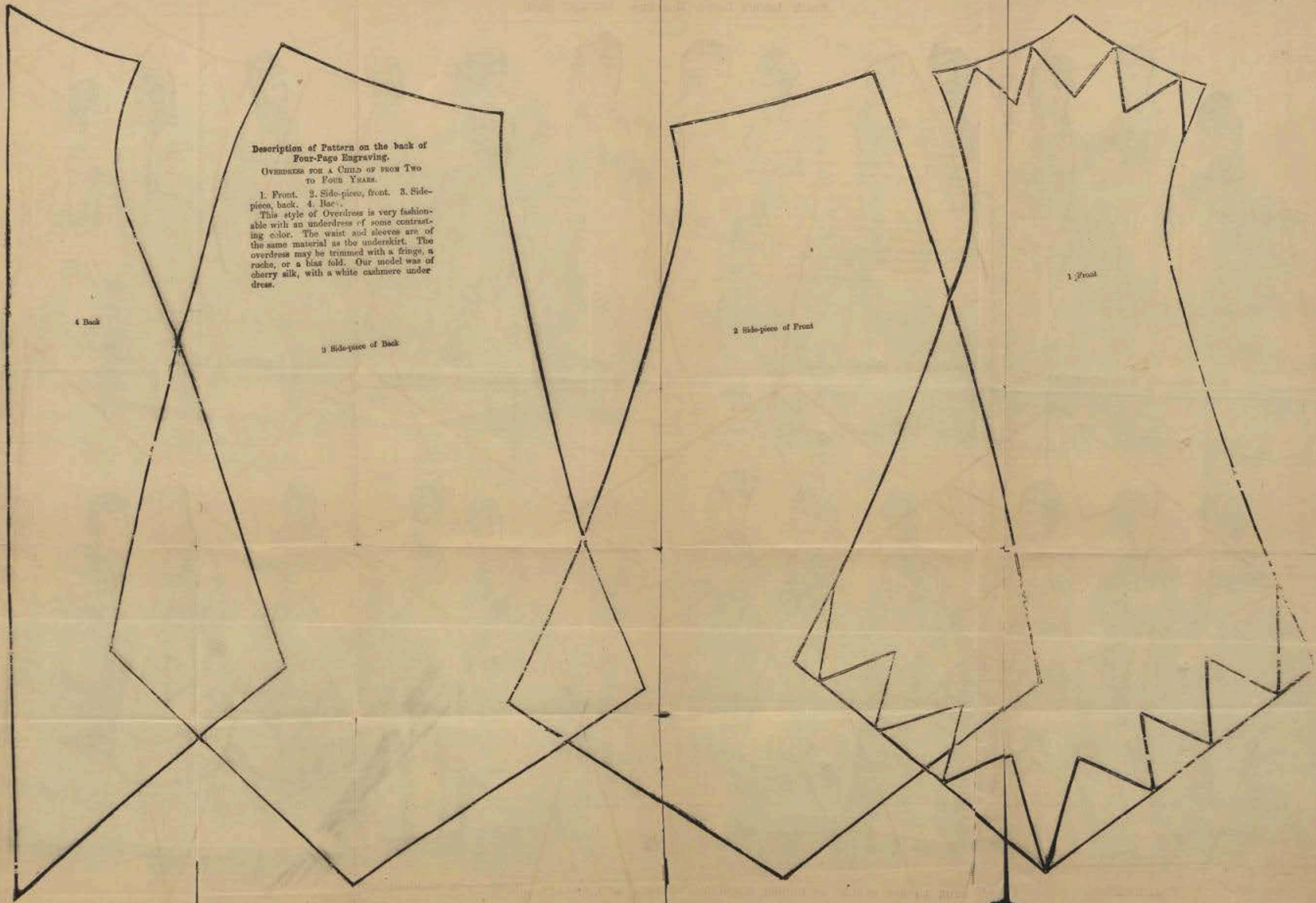
This style of Overdress is very fashion-
able with an underdress of some contrast-
ing color. The waist and sleeves are of
the same material as the underskirt. The
overdress may be trimmed with a fringe, a
ruche, or a bias fold. Our model was of
cherry silk, with a white cashmere under-
dress.

4 Back

3 Side-piece of Back

2 Side-piece of Front

1 Front

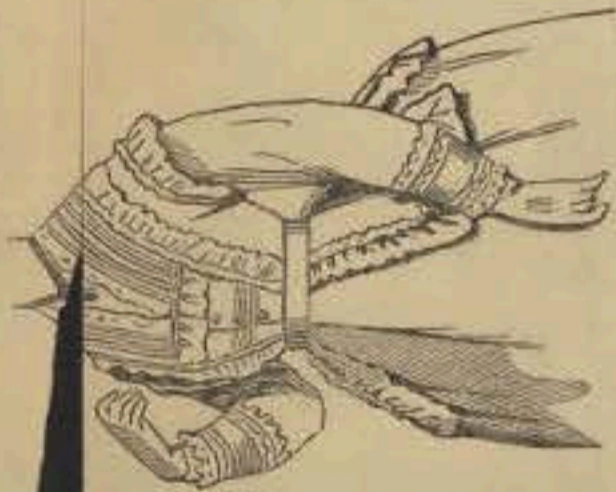




THE LATEST STYLES OF DINNER, EVENING, CARRIAGE AND WALKING DRESSES FOR JANUARY.



4 Side-piece of Back



3 Side-piece of Front



Description of Pattern on the back of Four-Page Engraving.

Low Corset.

To be made of silk, or some thin material for evening wear. It is trimmed all around with a ruffle and heading. Nos. 2 and 4 are united only as far down as the waist, where they are edged by the ruffle. A waistband is worn with this garment, closed in the back with a bow and four loops. The sleeves may be cut from the pattern given on our large paper pattern sheet, accompanying this Magazine, or if preferred, muslin sleeves, trimmed with lace and corresponding with the chemise, may be worn.

1 Front

