



L. 1731

c. 1910

LY 51.64.72

*Reproduction interdite*

"De Gracieuse"  
Geïllustreerde Aglayal





L. Faillat

L. 1740

0. 1910

Reproduction interdite

LY 31. 64. 71

"De Gracieuse"  
Geïllustreerde Aglajal





L.1743

C.1910

*Reproduction interdite*

LY 51, 64, 70

"De Gracieuse"  
*Geïllustreerde Aglayal*





L.1747

c. 1910.

*Reproduction interdite*

LY 51.64.69

“De Gracieuse”  
*Geïllustreerde Aglaja*





64 51. 64. 68

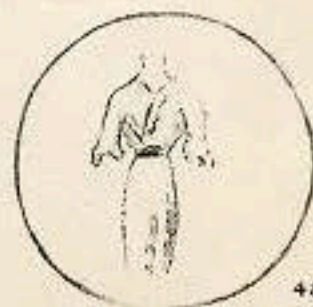
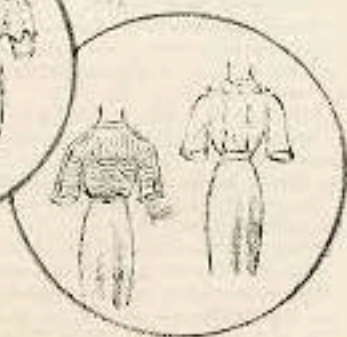
Reproduction interdite

L 1753

c. 1910

"De Gracieuse"  
Geïllustreerde Aglaya





14 51. 64. 142

(phot. Reutlinger)

4891

Reproduction interdite

"De Gracieuse"  
Geïllustreerde *Agglajal*

ca. 1910





64. 51. 69. 195

Reproduction interdite

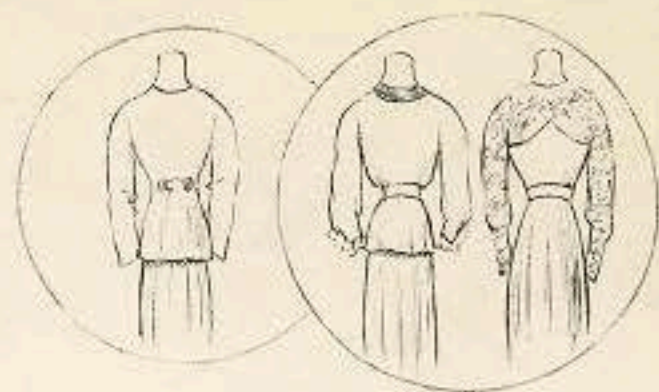
4899

C. 1916

"De Gracieuse"  
Geïllustreerde Aglaja

ca 1910





cy 51.64. 146

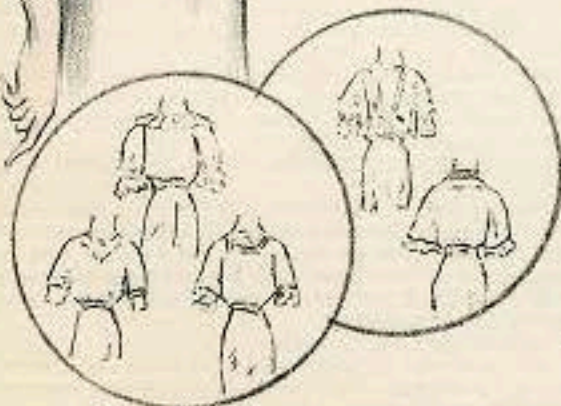
Reproduction interdite

4905

"De Gracieuse"  
Geïllustreerde Aglajal

ca/910





4751.64.147

(phot. Filix)

4906

Lelong *Reproduction interdite*

"De Gracieuse"

*Geïllustreerde Aglayal*

© 1910





LV 51.64.148

4907

*Reproduction interdite*

c. 1910

*"De Gracieuse"*  
*Geïllustreerde Aglaja*

54





Ronde Desprez  
L4 51. 64. 149

Redfern

Renée Desprez

(phot. Reutlinger)

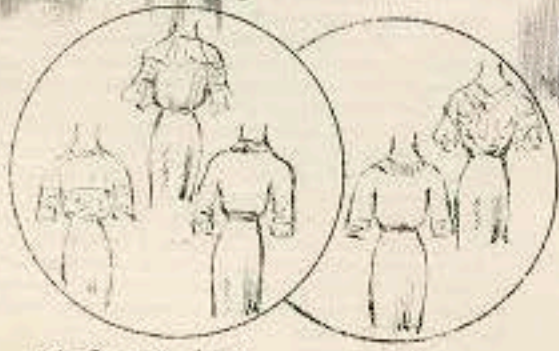
4014

"De Gracieuse"  
Geïllustreerde Aglaja

1910

43





W 51. W 4. 150

(phot. Reutlinger)

4915

Reproduction interdite

© 1910

“De Gracieuse”  
Geïllustreerde Aglayal





Dreccoll

LY 51. 64. 151



Dreccoll

(phot. Reutlinger)



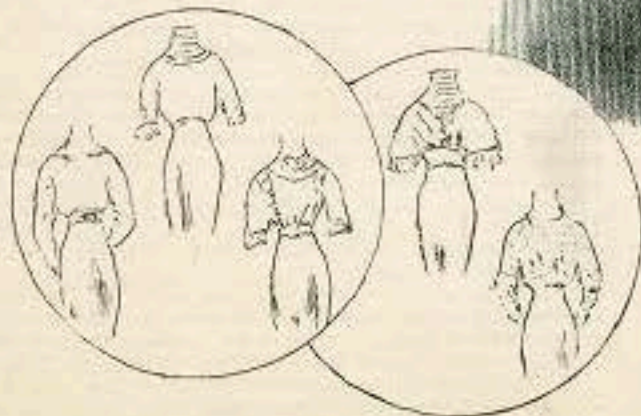
Lelong

4916

"De Gracieuse"  
Geïllustreerde Aglaja

c 1910





LV 51.64.155

4993

Reproduction interdite

"De Gracieuse"  
Geïllustreerde Aglayal

9.1919



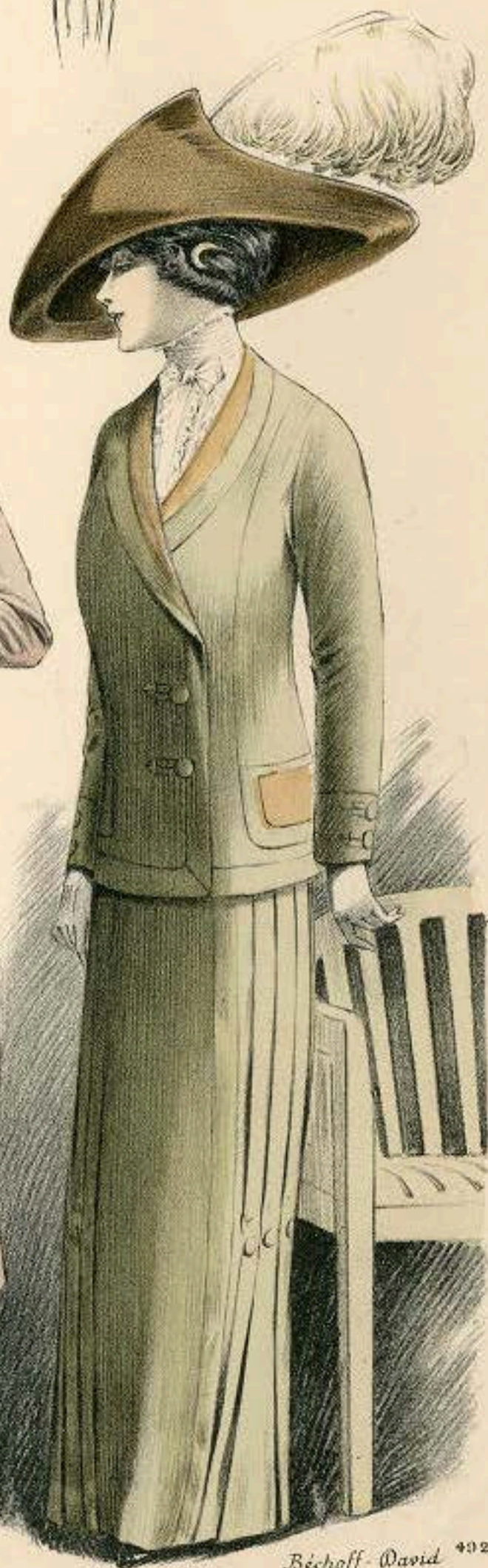


Béchoff-David  
(phot. Félix)

L4 51. L4. 154



(phot. Reutlinger)



Béchoff-David 4024  
(phot. Reutlinger)

Reproduction interdite

"De Gracieuse"

Geïllustreerde Aglayal

c 1910





LY 51.64.160

Reproduction interdite

4211

"De Gracieuse"  
Geïllustreerde Afgejal

c 1910





64 51. 64. 169

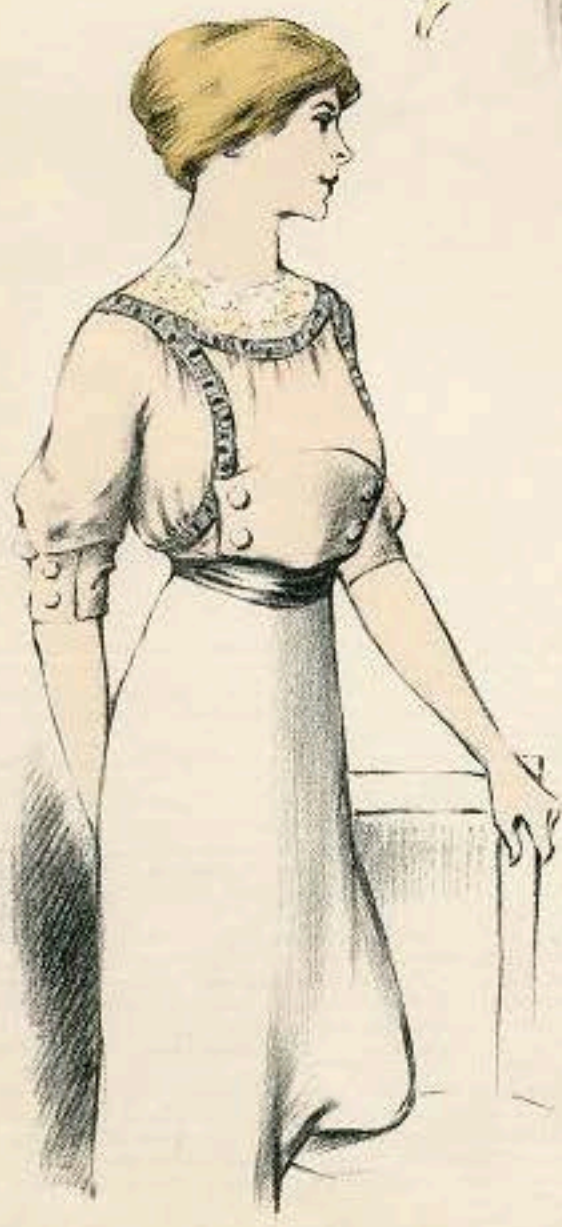
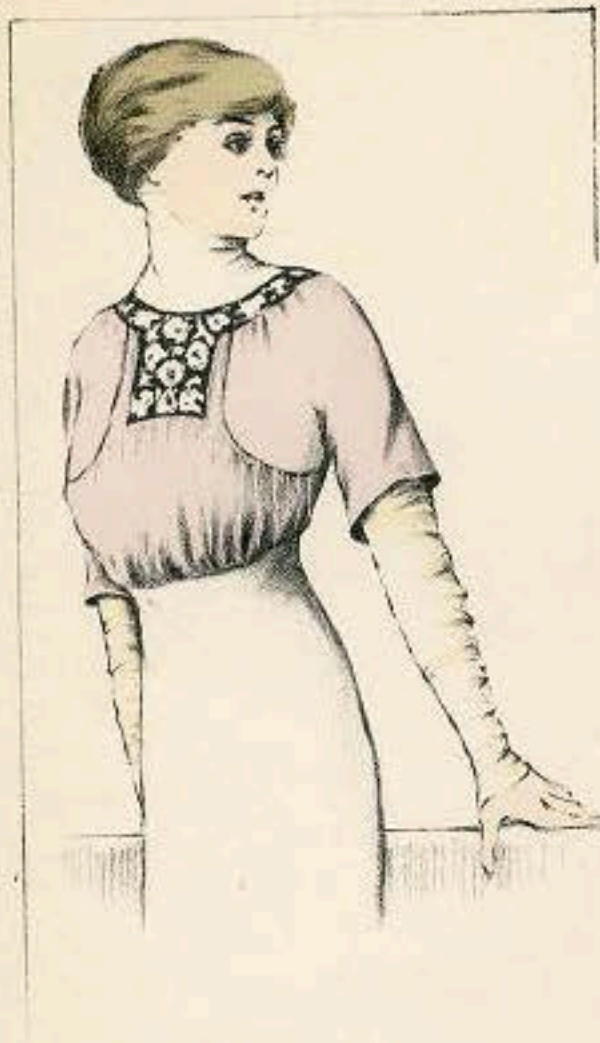
Reproduction interdite

"De Gracieuse"  
Geïllustreerde Aglajal

4132

ed. 1910  
85





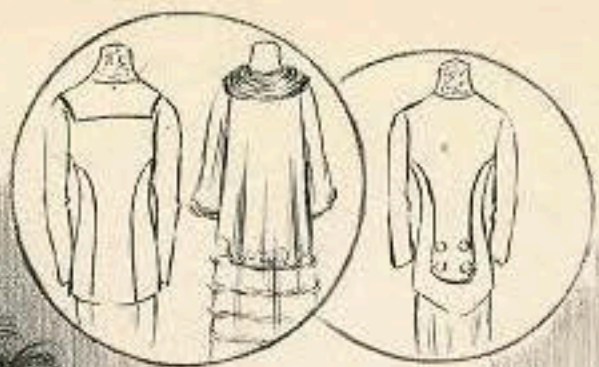
24 51. 64. 158

*Reproduction interdite*

"De Gracieuse"  
*Geïllustreerde Aglajal*

ca. 1910





4939

NY 51. 64. 156  
Duplicate

Reproduction interdite

"De Gracieuse"

Geïllustreerde Aglaja

ca. 1910





*Illustration interne*

4040

64. 169

*"De Gracieuse"*  
*Geïllustreerde Aglajal*

ca/910





4947

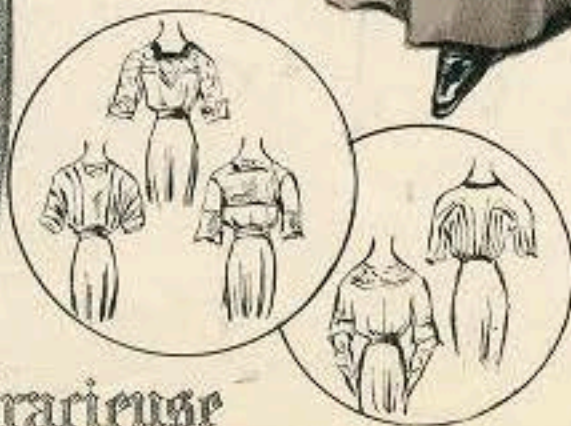
24 51. 64. 16 2

1911

"De Gracieuse"  
Geïllustreerde *Aglajal*

ca. 9/10  
78





C 1911

LY 51.64.151

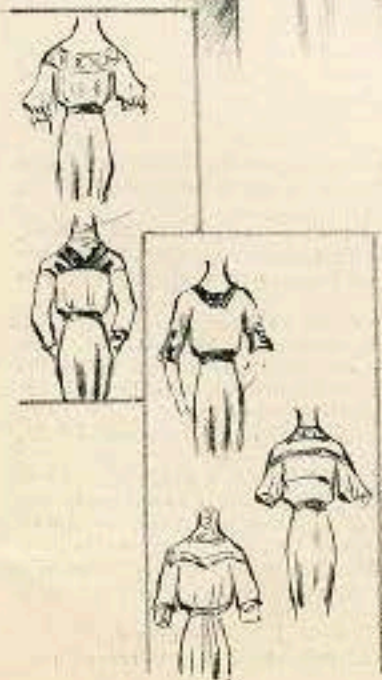
De Gracieuse

Geïllustreerde Aglayal

1910

ca 1910





LV 51. 24. 168



4955

Reproduction interdite

"De Gracieuse"  
Geïllustreerde *Agglajal* 1910  
86





Béchoff-David (phot. Reutlinger)

Béchoff-David  
(phot. Félix)

(reproduction interdite)

Rouff (phot. Reutlinger)

4956

L4 51. 64. 167

1912

"De Gracieuse"  
Geïllustreerde Aglaja

ca. 4/10  
90





CV 51.64.165

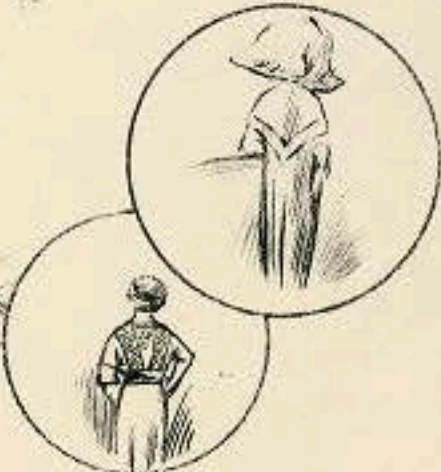
4863

Reproduction interdite

"De Gracieuse"  
Geïllustreerde Afdruif

ca/9/0  
89





LYSI. 64. 181

4864

"De Gracieuse"  
Geïllustreerde Aglajal

ca 1916  
77





LY 51. 64. 180

Reproduction interdite

"De Gracieuse"  
Geïllustreerde Aglajal

CG 1910  
91





LY SI. 64. 179

Reproduction interdite

"De Gracieuse"

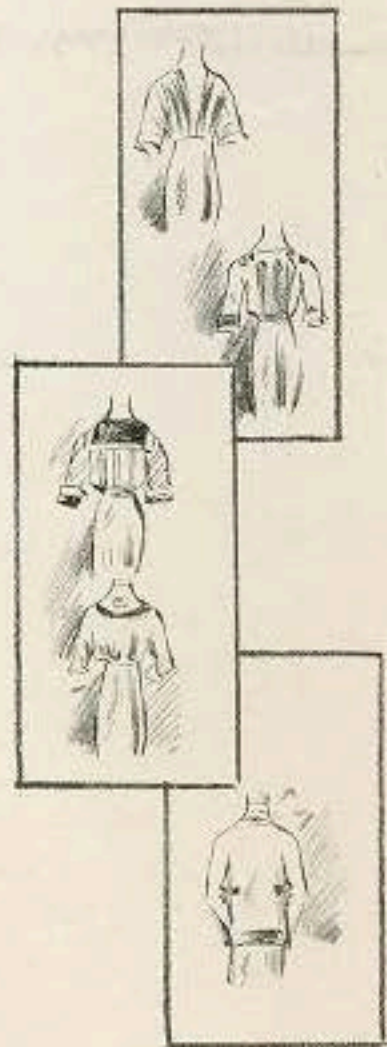
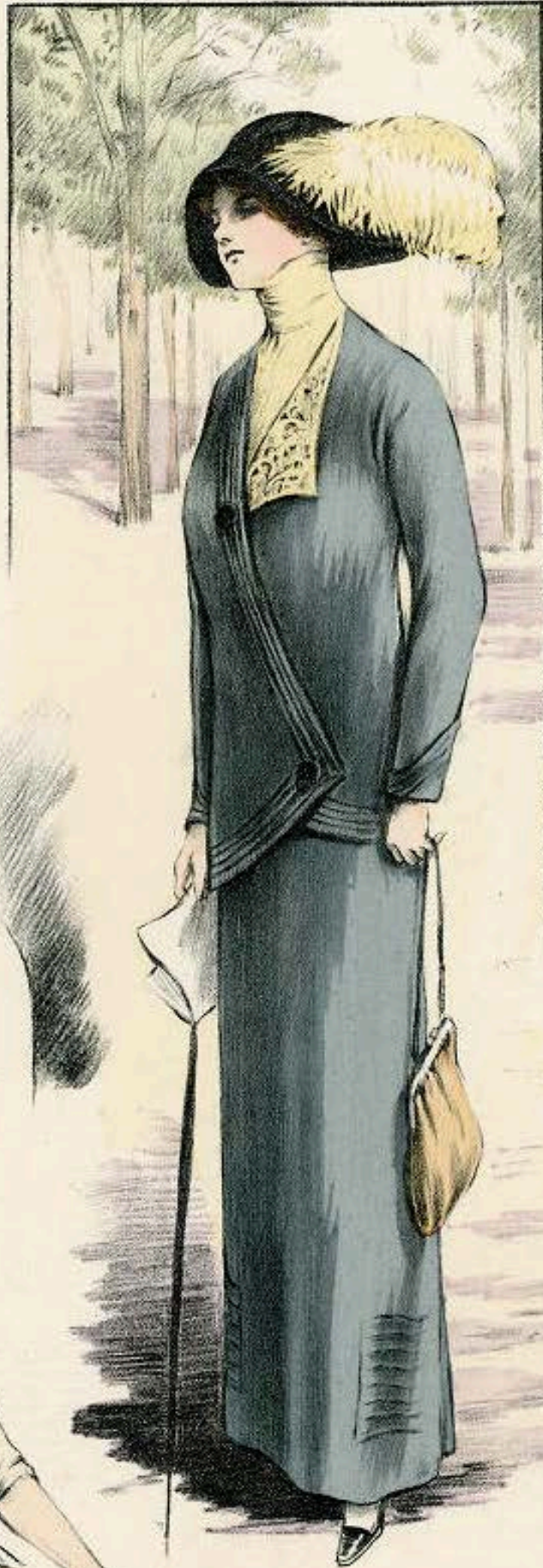
Geïllustreerde Aglaja

4971

ca 1910

67





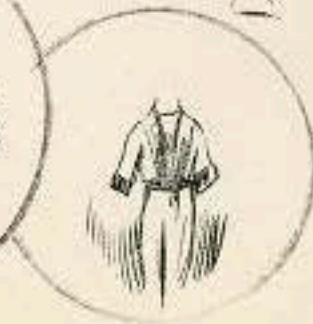
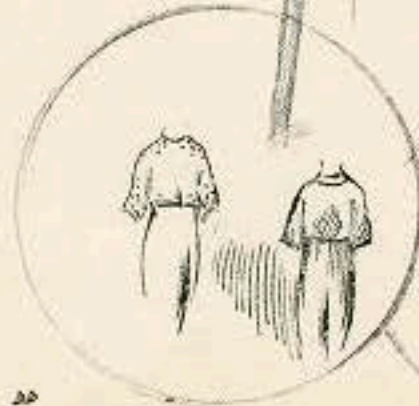
L4 51. 64. 178

Reproduction interdite

4972

"De Gracieuse"  
Geïllustreerde *Aglayal* ca. 1910  
76





4880

1912 LY 51.64.175 "De Gracieuse"  
Geïllustreerde Aglayal

ca 1910  
75





Reproduction interdite

4981

LY 51.64.174

"De Gracieuse"  
Geïllustreerde Aglajal

ca 1910  
74





Reproduction interdite

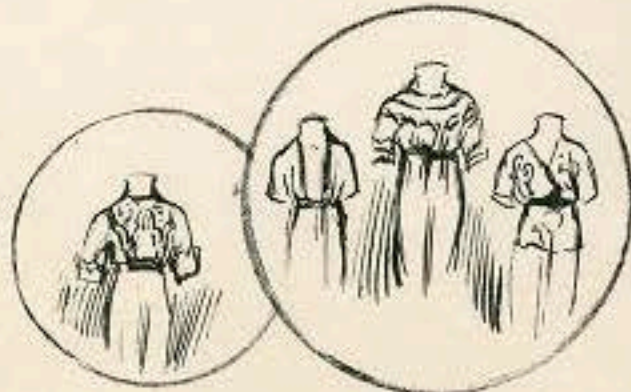
4982

"De Gracieuse"  
Geïllustreerde Aglaja

LY 31.64.173

ca. 1910





4888

LY 51. 64. 178

Reproduction interdite

"De Gracieuse"  
Geïllustreerde Aglaja

col. 910  
73





Reproduction interdite

64 51. 64 . 171

"De Gracieuse"  
Geïllustreerde Aglaja



4089

ca. 1910  
72





4934

1910

*Reproducción con interés de*

LA MODA ELEGANTE ILUSTRADA

L y 50.53.6

14 de Octubre de 1910

Preciados 46

Nº 38



THÉÂTRE ANTOINE  
NOMO



3231

3232

THÉÂTRE RÉJANE

JACQUES ABRAN



3233

3234

*Album Rêve*

*12, Rue Chaussée d'Antin Paris*

ca 1910





BOE. PROP. BELTINGER.

Reproduction interdite.

ROBE DU SOIR

1910 Mdy.





DOC. PROT. H. MANUEL

Reproduction interdite.

Toilette de Diner de MARTIAL-ARMAND

1910 May -



1910



*Les Grandes Modes de Paris*  
 N° 125 Bl. 1423

Supplément

ALA COMÉDIE FRANÇAISE "LE GOÛT DU VICE"  
 Toilettes portées par M<sup>me</sup> Pierat et Maille  
 Exécutées par Redfern et Duquin





*L. W. Verille*

*juillet 1911*

*Les Grandes Modes de Paris  
N° 127 Bl 1450*

Supplement

*Chapeau Eliane  
79, Rue des Petits-Champs*

*Coilette de promenade  
executée par Levillon*

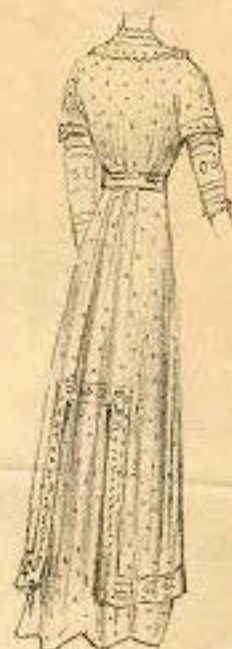
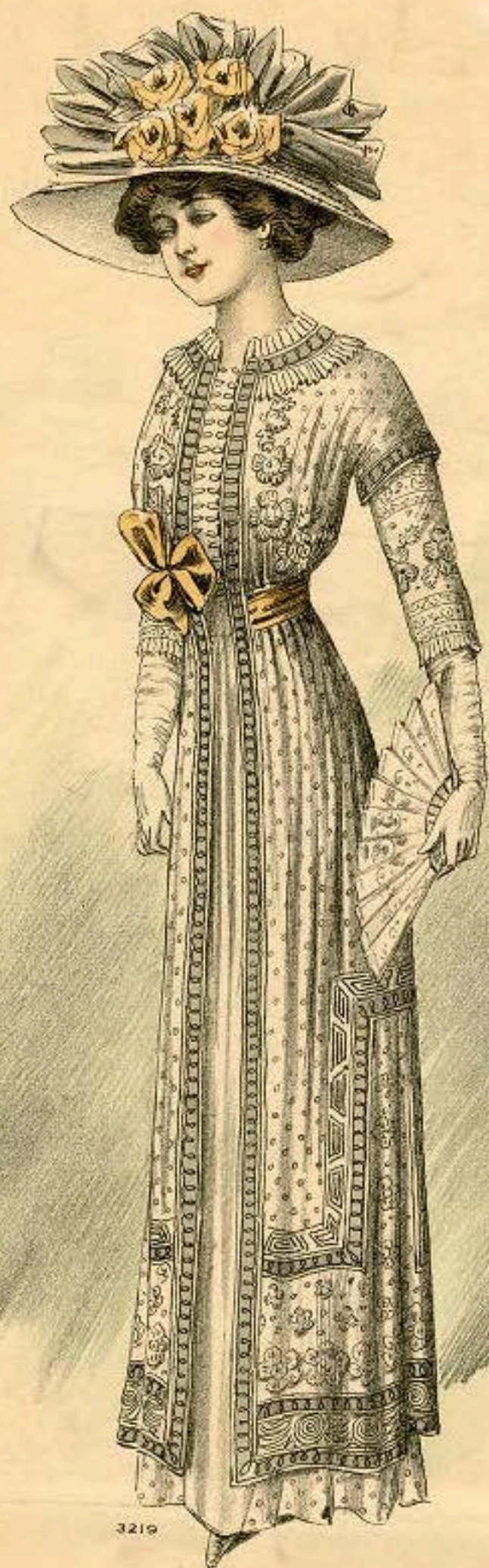




Album Pévé  
12, Rue Chaussée d'Antin, Paris

Ca 1910





3219

*Album Réve*  
*12, Rue Chaussée d'Antin Paris*

*Modèle de Francis*

Supplément au N° 336

6447.30.29 A

ca 1910





*Album Réve*  
*12, Rue Chaussée d'Antin Paris*

Supplément au N° 336

h442.30.29 J

ca 1910

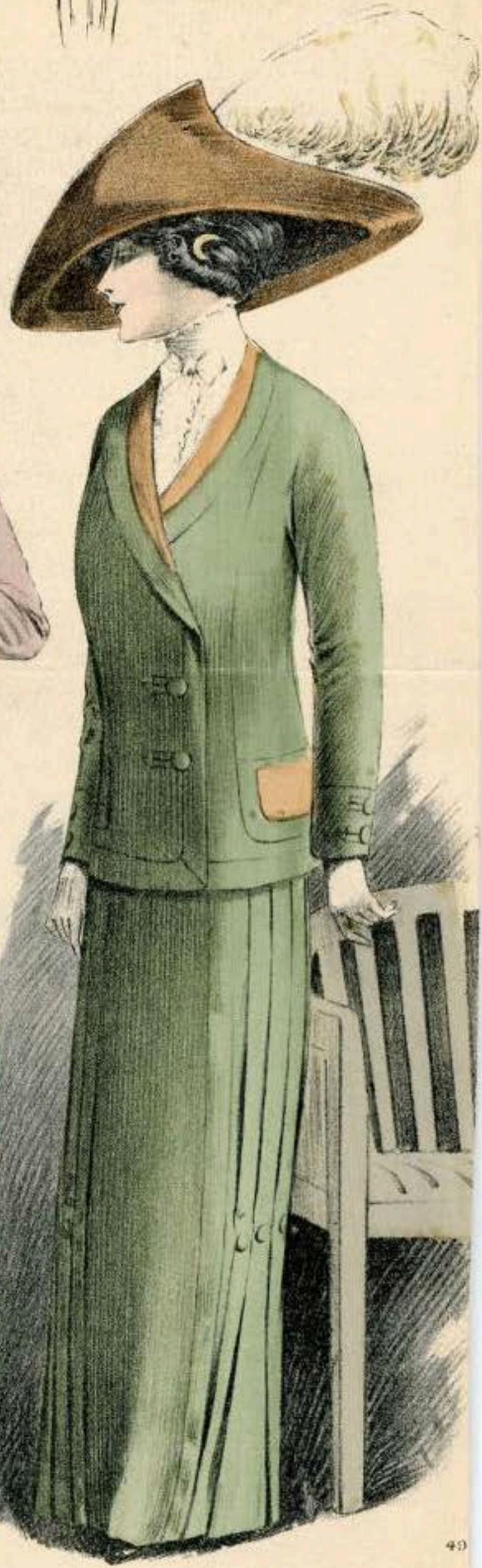




3223

3224





Reproduction interdite

1910

Ly 50.52.7

14 de Septiembre de 1910

# LA MODA ELEGANTE ILUSTRADA

Preciados 46

Nº 34





4914

1910

*Reproduction interdite*

# LA MODA ELEGANTE ILUSTRADA

Ly 50.52.5

6 de Agosto de 1910

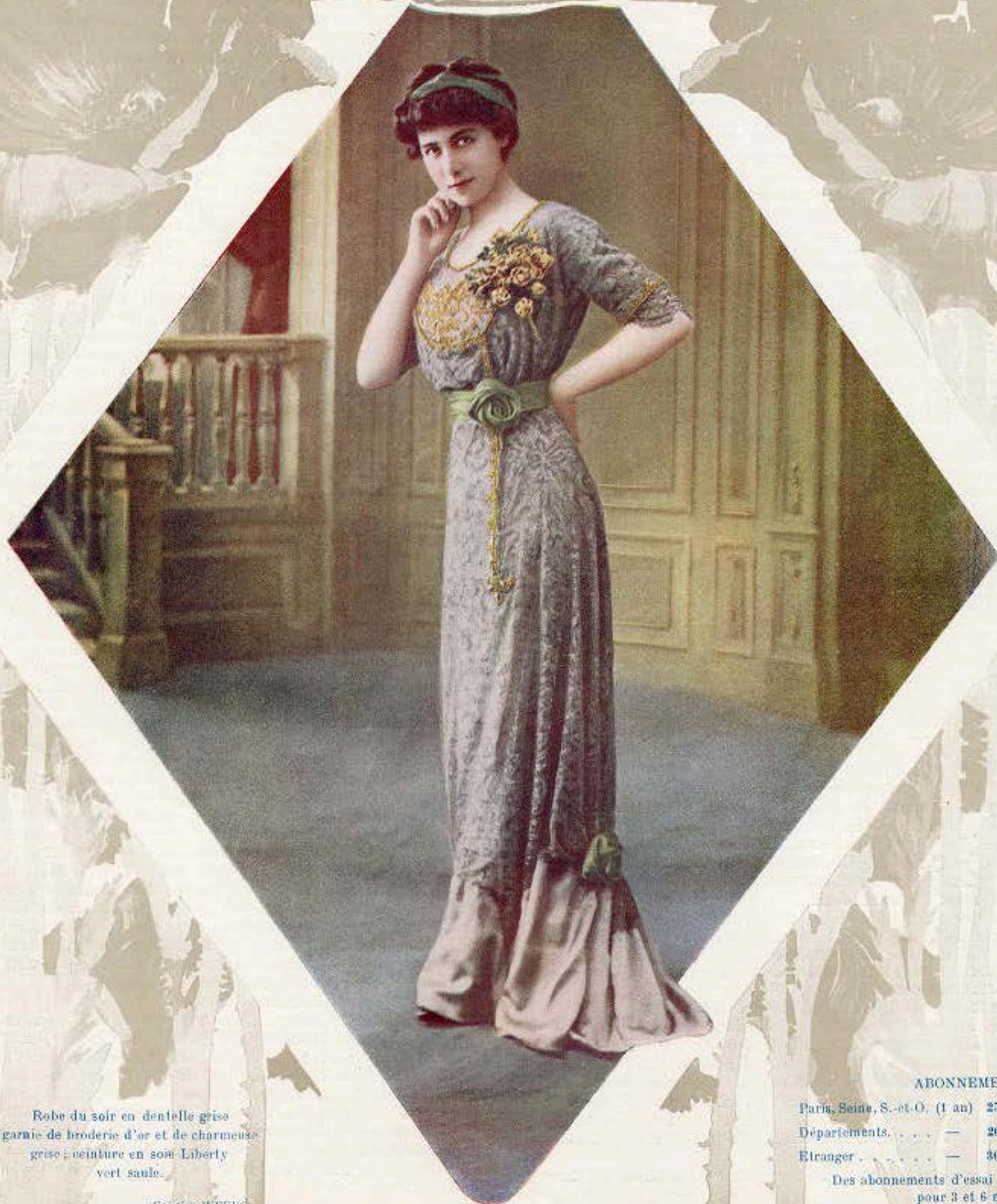
Preciados 46

Nº 90



# LA MODE ILLUSTRÉE

JOURNAL DE LA FAMILLE



Robe du soir en dentelle grise  
garnie de broderie d'or et de charmante  
grise; ceinture en soie Liberty  
vert saule.

(Création WEEKS)

Dir. phot. FÉLIX

ABONNEMENTS

Paris, Seine, S.-et-O. (1 an)	25 fr.	} GRANDE EDITION
Départements . . . . .	— 26 fr.	
Etranger . . . . .	— 30 fr.	

Des abonnements d'essai peuvent être pris  
pour 3 et 6 mois.



# LA MODE ILLUSTRÉE

## JOURNAL DE LA FAMILLE



Doc. phot. Reutlinger

Robe du soir en mousseline de soie pervenche,  
complétée d'une tunique en tulle gris taups orné de broderie.

ABONNEMENTS : 

{ Paris, Seine, S.-et-O. (1 an) 25 fr. }	GRANDE ÉDITION
{ Départements, . . . — 26 fr. }	
{ Etranger . . . . . — 30 fr. }	

Des abonnements d'essai peuvent être pris pour 3 et 6 mois.

1910



# LA MODE ILLUSTRÉE

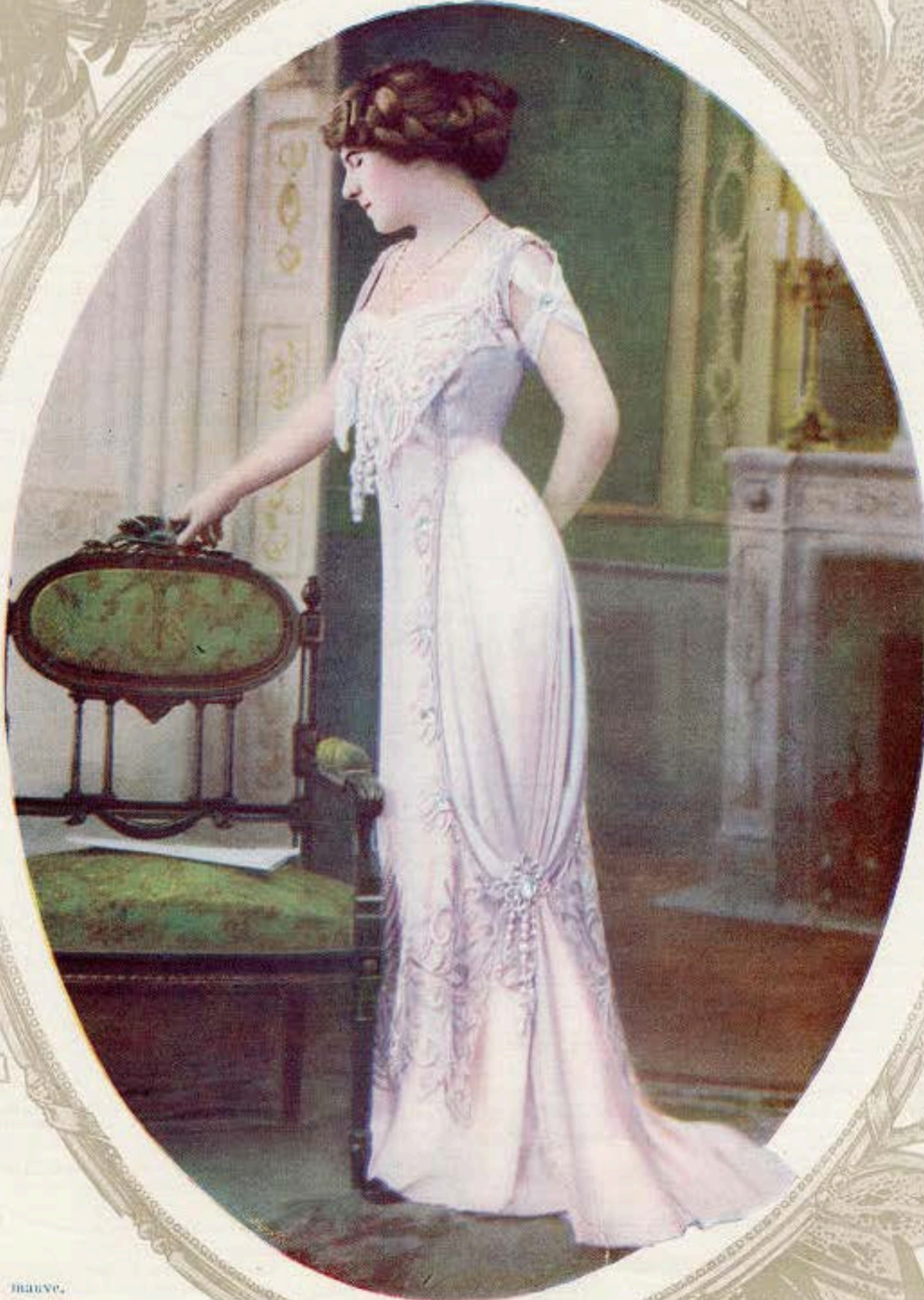
JOURNAL DE LA FAMILLE

ABONNEMENTS

Paris, Seine, S.-et-O. (1 an)	25 fr.	GRANDE ÉDITION
Départements. . . . .	26 fr.	
Etranger. . . . .	30 fr.	

Des abonnements d'essai peuvent être pris pour 3 et 6 mois.

56, Rue Jacob,  
PARIS



A.C.

Robe de dîner en météore mauve,  
ornée de broderie ton sur ton  
rehaussée de cabochons, jupe drapée  
sur le côté sous un motif en passementerie  
de perles.

Création REUFERNI

1910

ISS.—1109.—121

G





Dress 5105



Dress 5048

A DRESS IN ONE PIECE WHICH SLIPS ON OVER THE HEAD IS NOT ONLY DELIGHTFULLY EASY TO MAKE AND DON, BUT HAS THE CHARM OF GRACEFUL, CLINGING LINES AND A MARKED DISTINCTION DUE TO ITS PARIS ORIGIN







Waist 5098; skirt 5099

Waist 5046; skirt 5047

FOR AFTERNOON GOWNS GAILY COLORED SHOT TAFFETAS ARE USED, MADE AFTER DESIGNS WHICH PERMIT THEM TO BE COMBINED WITH BLACK. ROWS OF BUTTONS AND SILK OR GLITTERING FRINGES VIE WITH RICH EMBROIDERIES AS THE MOST POPULAR TRIMMINGS





"De Gracieuse"  
 Geillustreerde Aglayal

5088

1911  
 ca. 113

L4 57 64. 197





(phot. Cresca)

5095

LY SI. 64.186

"De Gracieuse"  
 Geïllustreerde Aglajal

ca/911





Reproducción autorizada

# LA MODA ELEGANTE ILUSTRADA

Ly 50.52.2  
6 de Mayo de 1912

Preciados 46

1912

Nº 17

5083 E





*En route vers le Caire*  
*Costume de voyage*

J. Bas Imp. Paris

*Paris 1912*

*La Femme "Chic"*

Supplément

*N° 14 Pl. 138*





L. 1808

Reproduction interdite

"De Gracieuse"

Geïllustreerde Aglajal

47 St. 64, 111

C. 1912





*Stall*

L. 1812

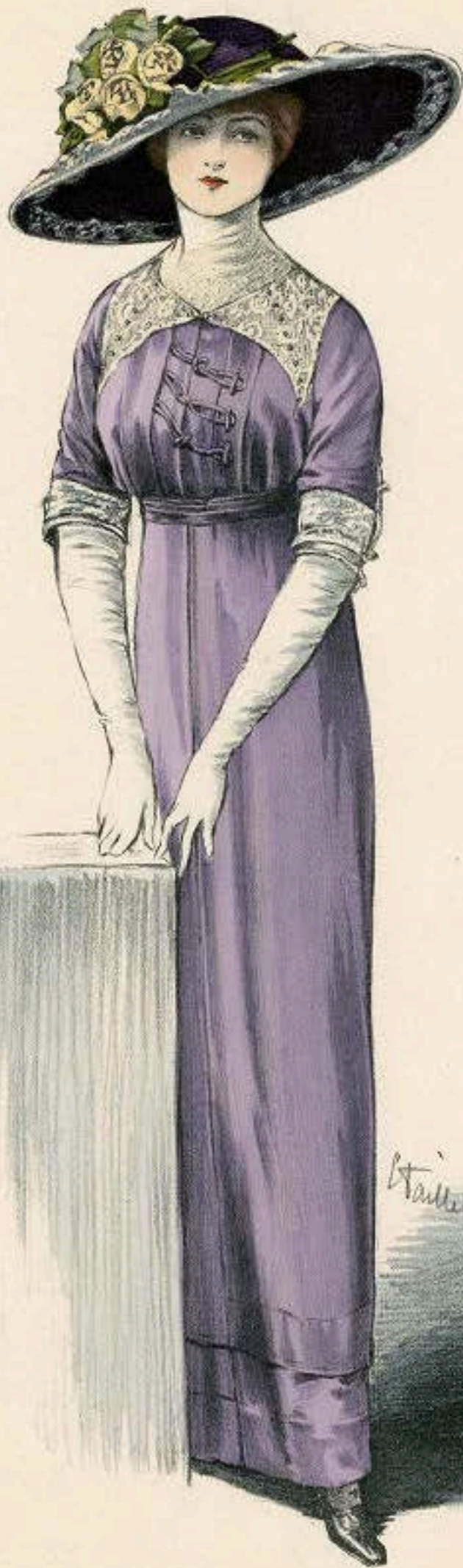
44 SL. 64. 110

*Reproduction interdite*

*"De Gracieuse"*  
*Geïllustreerde Aglayal*

*c. 1912*





L. 1822

C. 1912

Reproduction interdite

64 511 64 109

"De Gracieuse"  
Geïllustreerde Aglaja





NY 51. 24. 102

"De Gracieuse"  
Geïllustreerde Aglaya

L. 1825

c. 1912





L. 1829

Reproduction interdite

L. 1829

"De Gracieuse"  
Gullustreerde Aglajal

C. 1912  
143





LY 51.64. 106

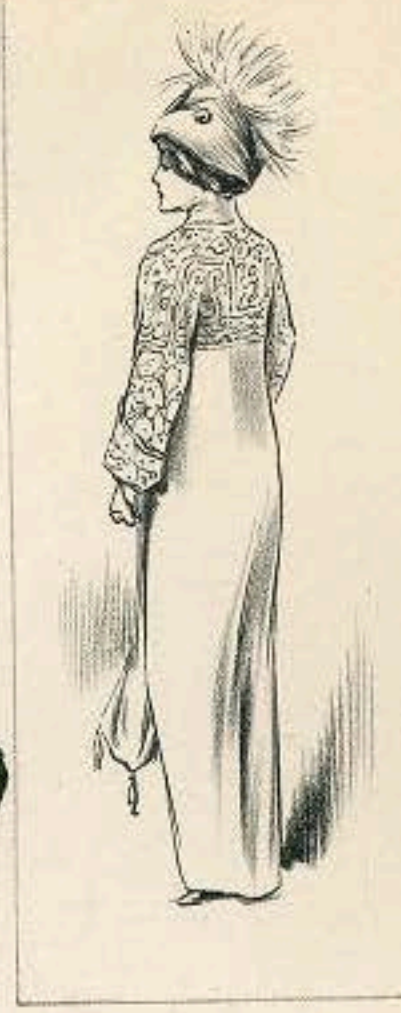
Reproduction interdite

"De Gracieuse"  
Geïllustreerde Aglayal

L. 1832

C. 1912





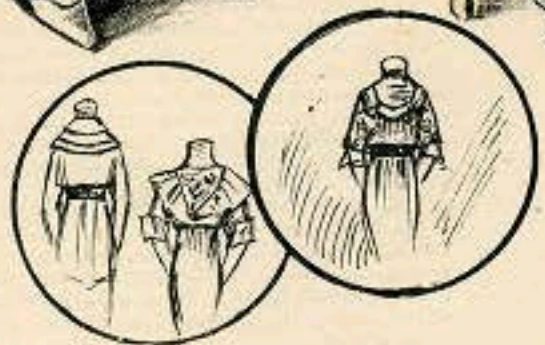
LY 51. 64. 105

L 1830

c/912

"De Gracieuse"  
Geïllustreerde Aglayal





5089

(phot. H. Marnet)

"De Gracieuse"  
Geïllustreerde *Agglajal*

c 1912  
122

L4 57. 64. 198





5000

© 1913

"De Gracieuse"  
Geïllustreerde Aglajal

ca/1912  
118

24 3764 199





5086

"De Gracieuse"  
Geïllustreerde *Agglajal*

Lg 51.64.200

c 1912  
111





Chapeau Lewis 5088  
(phot. H. Marnet)

"De Gracieuse"  
Geïllustreerde Aglajal

1917

24 51.64.202





Coelice

(phot. H. Manuel)

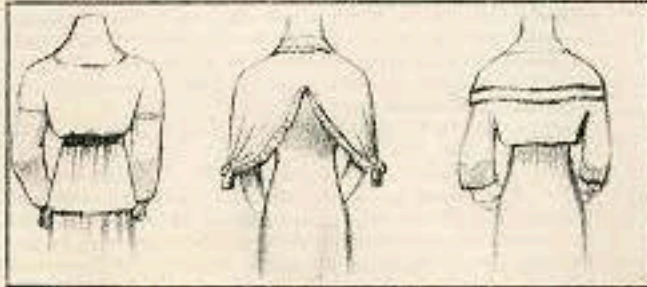


(phot. Saisot.)



Mici

(phot. H. Manuel)



3105

"De Gracieuse"  
Geïllustreerde Afgejal

ca/9/12  
131

29 57. 64. 504





"De Gracieuse"  
Geïllustreerde Aglayal

49 57.64.305-

ca. 1912  
132





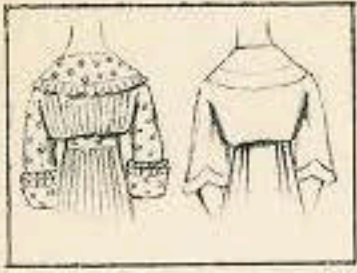
"De Gracieuse"  
Geïllustreerde *Agalaja*

Ly 51.64. 253

5107

eq. 1912  
125





L4 51. 64. 254

5113

"De Gracieuse"  
Geïllustreerde *Agglajal*

ca 1912  
134





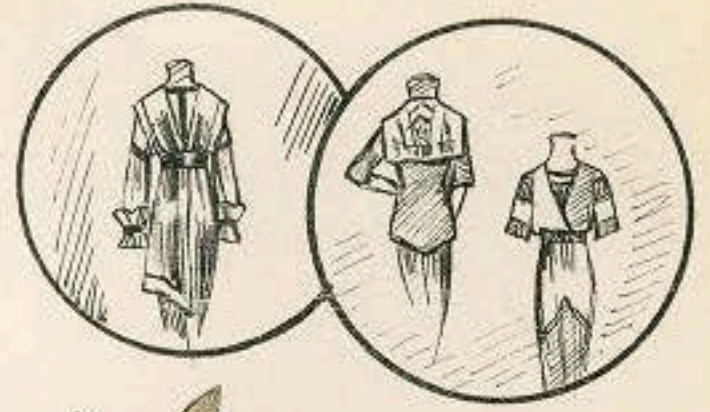
Lg 57. 64. 255

"De Gracieuse"  
 Geïllustreerde Aglaja

ca 1912  
 127

5114





5115

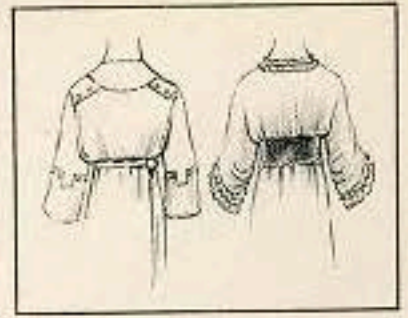
(phot. Kol)

L4 51.64.237

"De Gracieuse"  
Geïllustreerde *Agglajal*

ca. 1912  
129





5116

L4 51.64.338

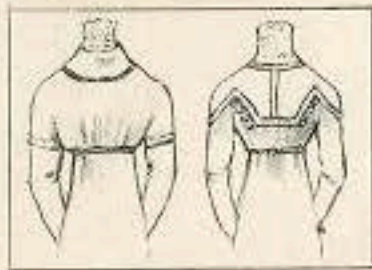
"De Gracieuse"  
Geïllustreerde *Aglajal*

ca 1912  
135





(phot. Manuel)



(phot. Gallois)

5123

L4 51. 64. 240

"De Gracieuse"  
Geïllustreerde Aglaja

ca. 1912  
136





(phot. Manuel)

phot. Galbot

(phot. Manuel)



5124

L4 51. 64. 341

"De Gracieuse"  
Geïllustreerde Aglajal

coll. 1912  
137



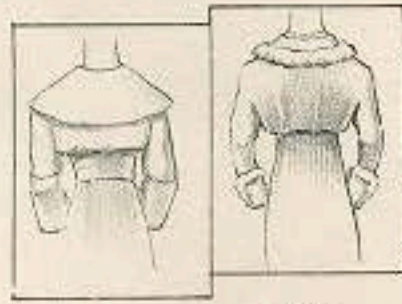


L4 57.64. 243

"De Gracieuse"  
Geïllustreerde Aglaja

co. 1912  
138





5138

Ly 51. 64. 245

Reproduction interdite

"De Gracieuse"  
 Gullustreerde Aglayal

ca 1912  
 126





Reproduction interdite

# LA MODA ELEGANTE ILUSTRADA

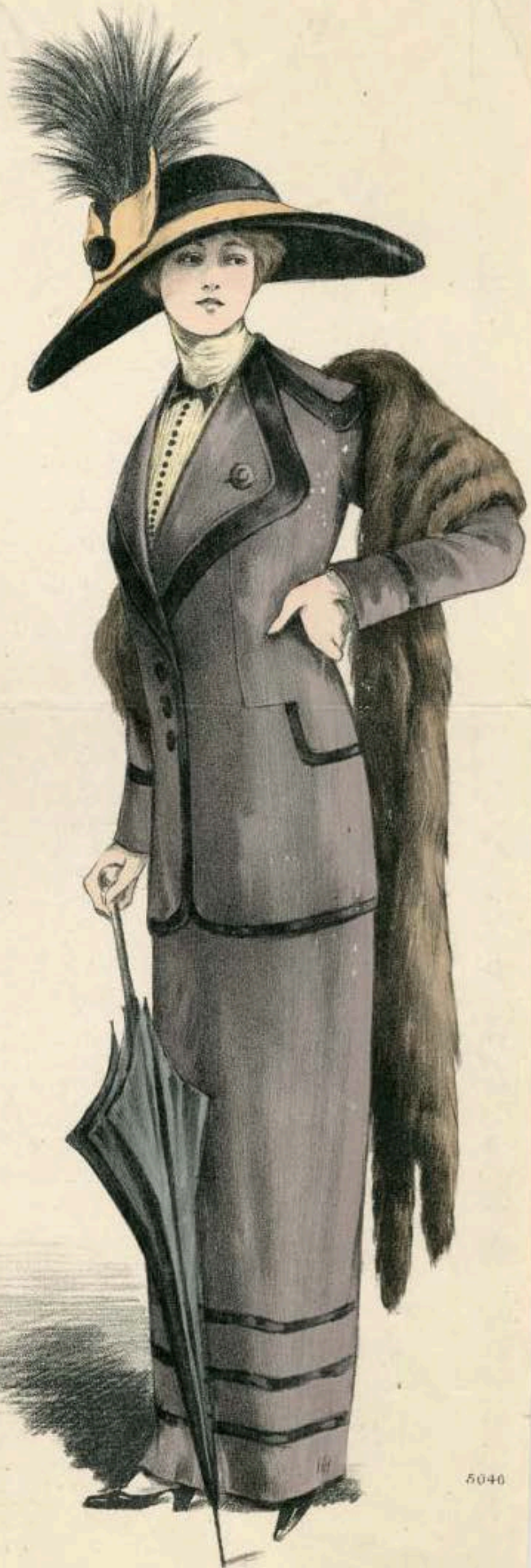
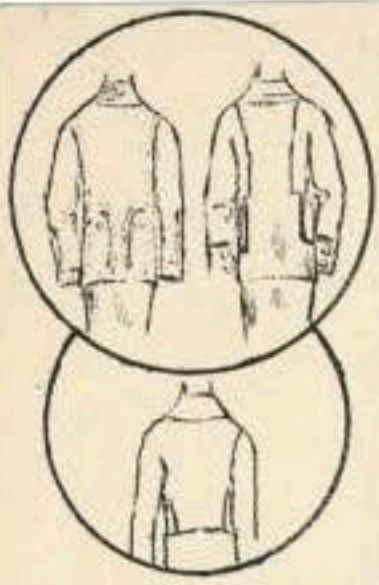
Ly 50. 52. 17

22 de Mayo de 1911

Preciados 46

Nº19





5040

*Reproduction interdite*

# LA MODA ELEGANTE ILUSTRADA

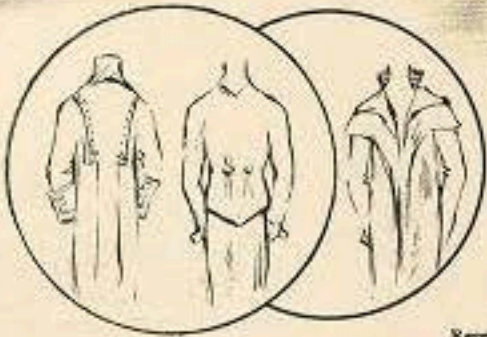
L. y S. 50.52.4

14 de Diciembre de 1911

Preciados 46

Nº 46





4990

LY 51.64.170

Reproduction interdite

1913

*"De Gracieuse"*  
*Geïllustreerde Aglajal*

ca/910  
92





51.64.67

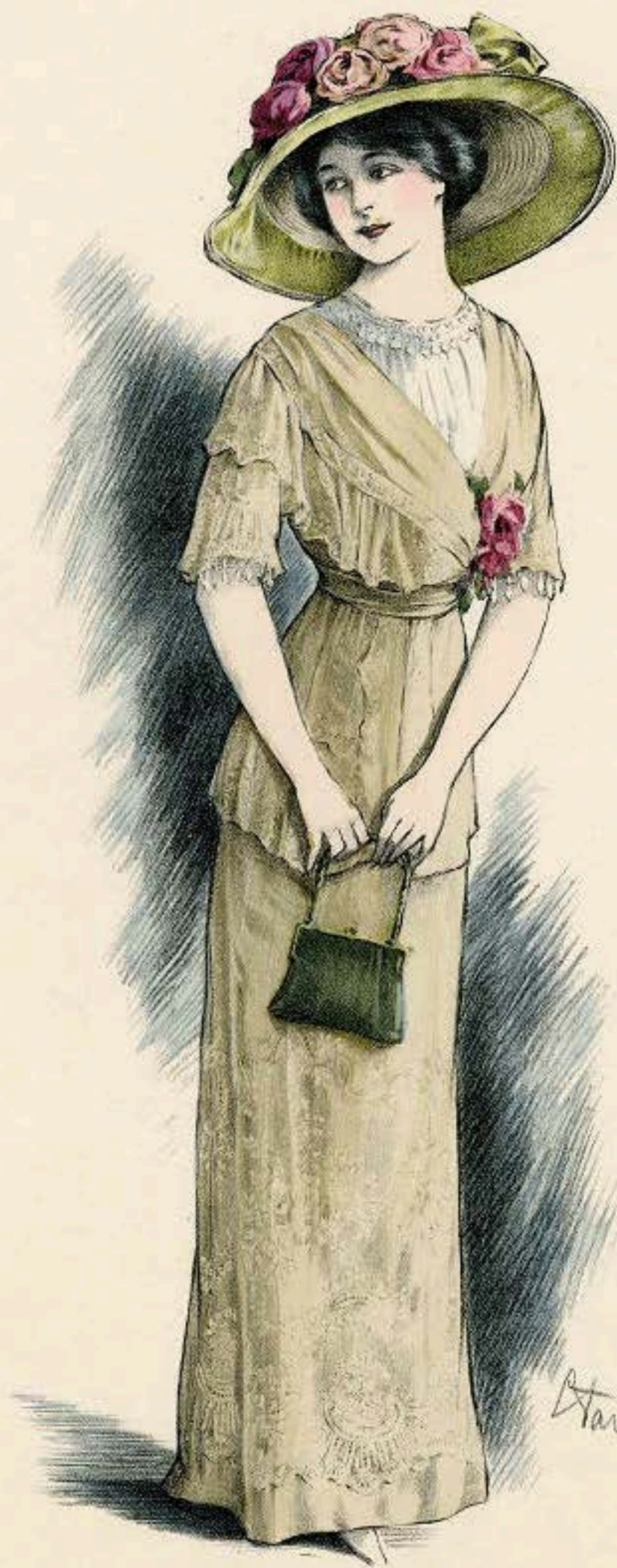
Reproduction interdite

L. 1775

e. 1911

"De Gracieuse"  
Geïllustreerde *Aglaya*





L. 1276

c. 1911

Reproduction interdite

LY 51.64.113

"De Gracieuse"  
Geïllustreerde Aglaja





L. Failler

L. 1781

c. 1911

L. 51. 64. 117

Reproduction interdite

"De Gracieuse"  
Geïllustreerde *Aglaya*





*Harlot*

1786

*Reproduction interdite*

LY 51, 64, 116

*"De Gracieuse"*  
*Geïllustreerde Aglajal*

c. 1911





LY 51. 64. 115

Reproduction interdite

"De Gracieuse"  
Geïllustreerde Aglaja

L. 1702

C. 1911





L. 1795

c. 1911

L. 51. 64. 114

"De Gracieuse"  
Geïllustreerde Aglajal





*Haillot*

L. 1799

c. 1911

L. 31.64.113

"De Gracieuse"  
Geïllustreerde Aglajal





LY 51. 64. 182

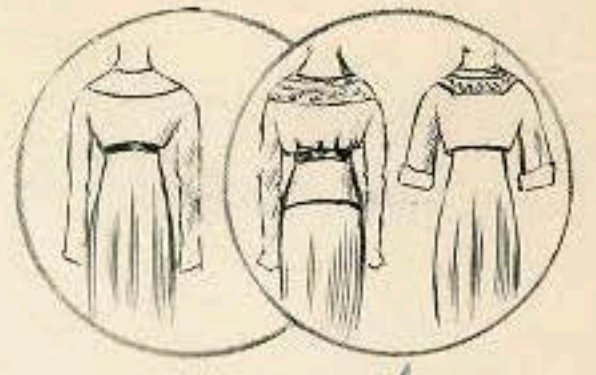
"De Gracieuse"

Geïllustreerde Aglayal

4907

c/1911  
71





4998

Reproduction interdite

L4 57.64. 206

ca/911

"De Gracieuse"  
Geïllustreerde Aglajal





LY. 51. 64. 185

Reproduction interdite

"De Gracieuse"  
Geïllustreerde Aglajal

5804

ca. 1911  
112





(phot. L. Gresca)



L4 51.64.226

Reproduction interdite

"De Gracieuse"  
Guillustreorde Aglayal

5006

col 911





5007

Reproduction interdite

"De Gracieuse"

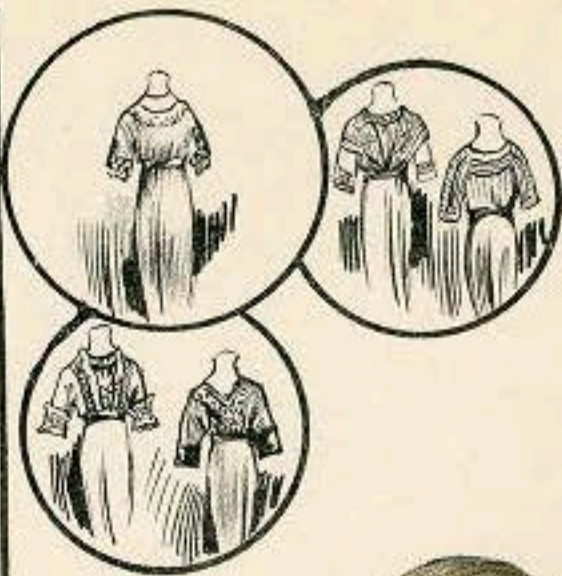
Geïllustreerde *Aglayal*

L4 51.04.225

©1911

ca. 1911



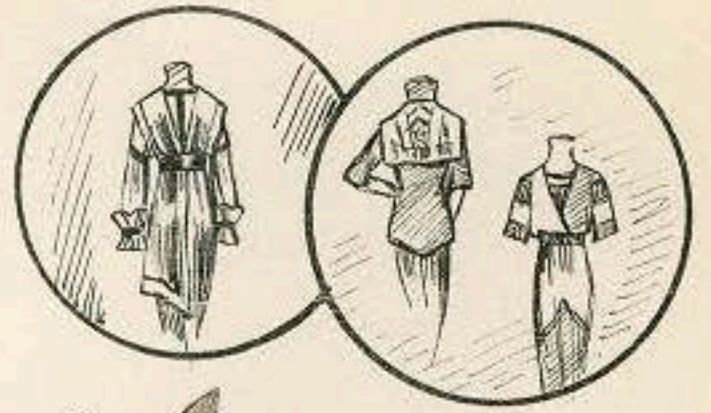


24 51.04. 224

Reproduction interdite  
"De Gracieuse"  
Geïllustreerde Aglajal

5013  
ca. 1911  
109





(phot. Rol.)

L4 51.64.237

"De Gracieuse"  
Geïllustreerde Aglaja

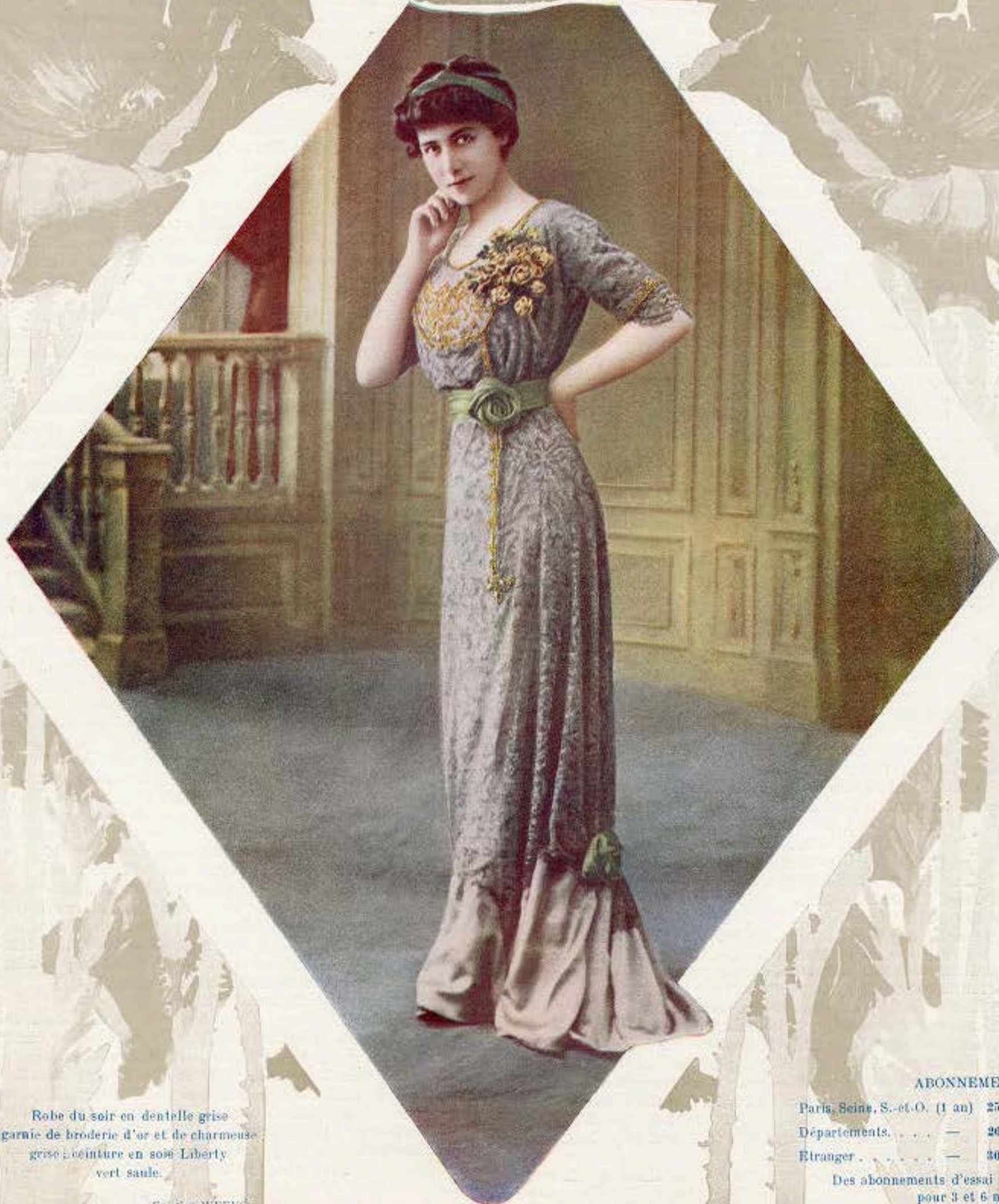
ca. 1912  
129

515



# LA MODE ILLUSTRÉE

JOURNAL DE LA FAMILLE



Robe du soir en dentelle grise  
garnie de broderie d'or et de charmuse  
grise; ceinture en soie Liberty  
vert saule.

Creation WEEKS

Doc. phot. F&E

ABONNEMENTS.

Paris, Seine, S.-et-O. (1 an)	25 fr.	} GRANDE ÉDITION
Départements. . . . .	— 26 fr.	
Etranger. . . . .	— 30 fr.	

Des abonnements d'essai peuvent être pris  
pour 3 et 6 mois.



# LA MODE ILLUSTRÉE

## JOURNAL DE LA FAMILLE



Dir. phot. Reutlinger

Robe du soir en mousseline de soie pervenche,  
complétée d'une tunique en tulle gris taups orné de broderie.

ABONNEMENTS :	{	Paris, Seine, S.-et-O. (1 an)	25 fr.	GRANDE ÉDITION
		Départements . . . . .	— 26 fr.	
		Etranger . . . . .	— 30 fr.	

Des abonnements d'essai peuvent être pris pour 3 et 6 mois.

1910



# LA MODE ILLUSTRÉE

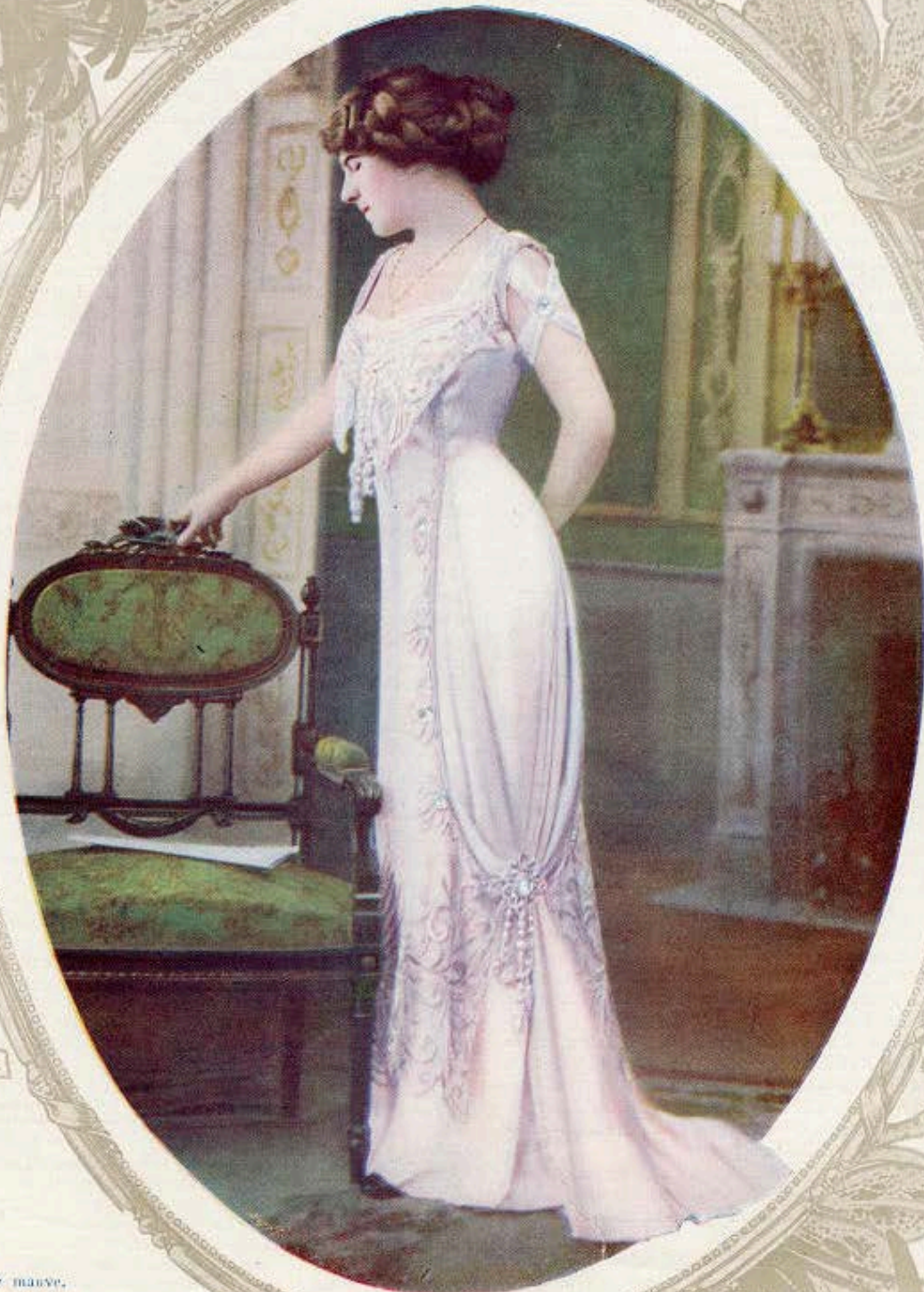
JOURNAL DE LA FAMILLE

ABONNEMENTS

Paris, Seine, S.-et-O. (1 an)	25 fr.	} GRANDE EDITION
Départements. . . . .	26 fr.	
Etranger. . . . .	30 fr.	

Des abonnements d'essai peuvent être pris  
pour 3 et 6 mois.

56, Rue Jacob,  
PARIS



A.C.

Robe de dîner en météore mauve,  
ornée de broderie ton sur ton  
rehaussée de cabochons, jupe drapée  
sur le côté sous un motif en passementerie  
de perles.

(Création REDFERN)

1910

160. plus, 1/2

G





Dress 5105



Dress 5048

A DRESS IN ONE PIECE WHICH SLIPS ON OVER THE HEAD IS NOT ONLY DELIGHTFULLY EASY TO MAKE AND DON, BUT HAS THE CHARM OF GRACEFUL, CLINGING LINES AND A MARKED DISTINCTION DUE TO ITS PARIS ORIGIN

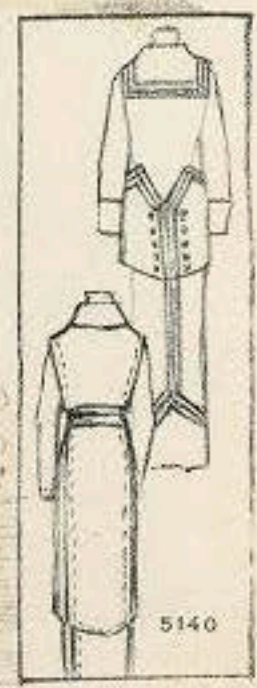






ky 57. 64. 935-

"De Gracieuse"  
Geïllustreerde Aglayal



col 9/2  
148





Drecoli  
 phot. Galbot

L4 57. 64. 231

"De Gracieuse"  
 Geillustreerde Aglayal

ca 1912  
 140

5141





Béchoff-David

J.M.

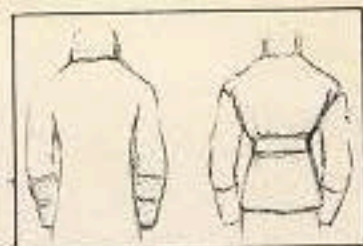
49 57 64 232

(Phot Galbot)

Marbail

"De Gracieuse" No. 5148  
Geïllustreerde Aglaja 1912  
141





Dukes

(Phot. Galbot)



Devill

5149

Ly 57.64.233

Reproduction interdite

"De Gracieuse"  
Geïllustreerde Aglayal

ca 1912  
192





Reproduccion intervale

# LA MODA ELEGANTE ILUSTRADA

Preciados 46

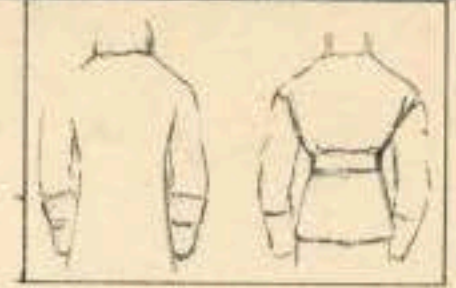
Ly 50.52.16

14 de Marzo de 1912

1912

Nº





5149

Reproduction interdite

1912  
119

# LA MODA ELEGANTE ILUSTRADA

Ly 50.52.3  
30 de Diciembre de 1912

Preciados 46

No 48





COPYRIGHT

ENTERED AT STATUERS HALL

*"The Tailor & Cutter" Fashions.*

THE JOHN WILLIAMSON CO. LTD. 42, GERRARD ST. LONDON. W.C.





Les Grandes Modes de Paris  
N° 156 Bl 1903

Supplement

Ca 1913  
Coilette d'après midi  
par Redfern





*Handwritten signature and date: 1913*

1913

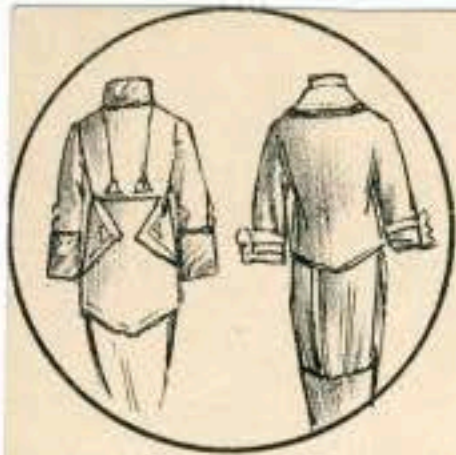
*Les Grandes Modes de Paris*

*N. 157 Bl. 1918*

Supplement

*Sur la Riviera  
Coilette de Paquin*





5168

Reproduction interdite

1913

Ly 50.52.14  
6 de Marzo del 1913

LA MODA ELEGANTE ILUSTRADA

PRECIADOS 46

Nº 9





1913

Reproduction interdite

LA MODA ELEGANTE ILUSTRADA  
Preciados, 46 MADRID

Ly 50.52.15'  
14 De Agosto De 1913

Nº 30





Coat 6085; skirt 6055  
[Skirt 6055 described on page 277]

The New York Ritz-Carlton, like its London and Paris cousins, sets out small tables in the Winter Garden, where women loiter over their after-luncheon coffee and liqueurs.

Dress 6065

Three yards and one-eighth of material forty-four inches wide and five-eighths of a yard of silk twenty-seven inches wide for underfacing the fronts will be required for the coat in medium size. Two yards and five-eighths of satin forty-four inches wide will be required for the skirt. Such combinations of materials are often seen in afternoon costumes.

Three yards and seven-eighths of charmeuse forty-four inches wide, one-half yard of lace eighteen inches wide, and one-half yard of contrasting satin or chiffon forty-four inches wide to line the collar and vest, will be required for the dress in medium size, as it is illustrated above. It will be equally good in tulle, foulard, crêpe de Chine or cotton crêpe.





LY 51.64.56

"De Graciense"  
Geïllustreerde Aglaja

c. 1913





*L. Wenz*

LY 51.64. 73

c. 1913

"De Graciense"  
Geïllustreerde Aglaja





L. 1870

*Harlet*

c. 1913

L. 51.64.104

"De Gracieuse"  
Geïllustreerde *Aglayal*





*V. Van der*

L. 1875

c. 1913

LY 51.24.103

"De Gracieuse"  
Geïllustreerde Aglaja





L. 1881

V. Tardet

c. 1913

51. 54. 102

"De Gracieuse"  
Geïllustreerde Aglaja





L. 1891

c. 1913

"De Gracieuse"  
Geïllustreerde Aglaja

LY 51.64.101





L. 1904

c. 1913

L7 51.64.100

Reproduction interdite

"De Gracieuse"  
Geïllustreerde Aglayal





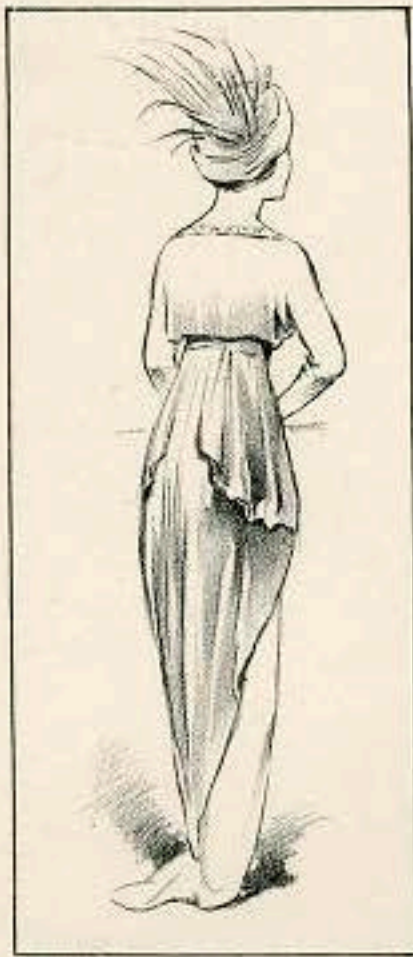
L. 1912

C. 1913

L. 1912

"De Gracieuse"  
Geïllustreerde Aglayal





L. 1921

c. 1913

L. 51. 64. 98

"De Graciense"  
Geïllustreerde Aglaja





L. 1920

c. 1913

LY 51.64.97

"De Gracieuze"  
Geïllustreerde Aglaja





L.1934

c.1913

LY 51.64.96

Reproduction interdite

"De Gracieuse"  
Geïllustreerde Aglaja





*E. M...*

L. 1943

c. 1913

Reproduction interdite

L. 51. 44. 95

"De Gracieuze"  
Geïllustreerde Aglayal





c. 1913

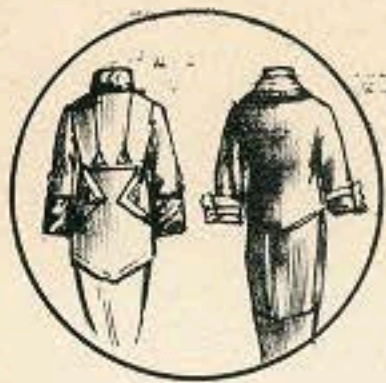
L. 1969

Reproduction interdite

LV 51. 44. 94

"De Gracieuze"  
Geïllustreerde Aglajal





(Phot. Galbot.)

Dukes

Reproduction interdite



Laferriere

5166

24 57. 64 229

"De Gracieuse"  
Geïllustreerde Aglajal

cy 1913  
168





5171

Ly 51. 64. 228

"De Gracieuse"  
Geïllustreerde Aglayal

19/3  
107





5172

*Darten*

24 51. 64. 207

"De Graciense"  
Geïllustreerde *Aglaya* ca 1913  
166





5174

24 51.64. 275-

"De Gracieuse"  
Geïllustreerde *Aglaya*

1913  
182





M<sup>rs</sup> Henry  
« à la Pensée »

(Plot Galbot)

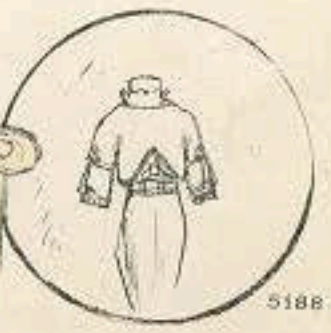
24 57.64.274

“De Gracieuse”  
Gallustreerde Aglayal

ca/19/13  
177

5182





5188

De Gracieuze  
 Geïllustreerde Aglaja  
 24 57. 64. 273

ca 1913  
 169



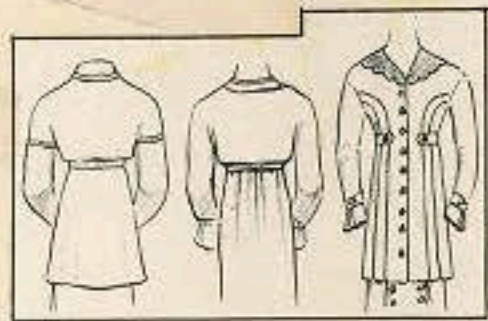


64 57.04. 272

"De Graciense"  
Geïllustreerde *Aglaya* 1913  
170

5189





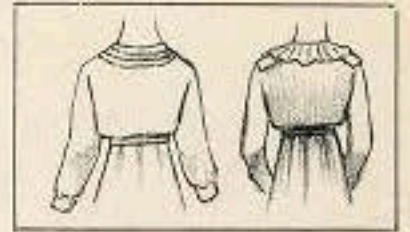
5100

L4 51.64.271

"De Graciense"  
Geïllustreerde Aglaja

ca. 19/13  
165





5191

2451.64.270

"De Graciense"  
Geïllustreerde *Aglaja*

9/19/13  
181





Reproduction interdite

5197

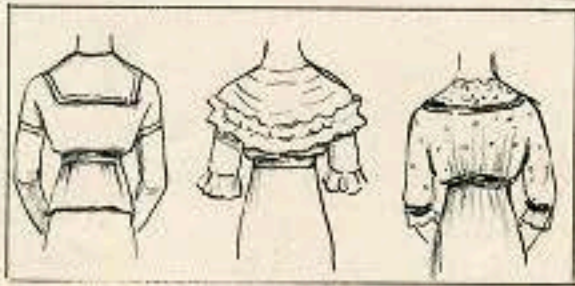
Ly 57.64.269

"De Graciense" ca 1913  
 Geïllustreerde Afdeling  
 179





L. 51. 64. 268



Reproductio: inderisite

ca 19/13  
178

5198

"De Graciense"  
Geïllustreerde Aglaja





Reproduction interdite

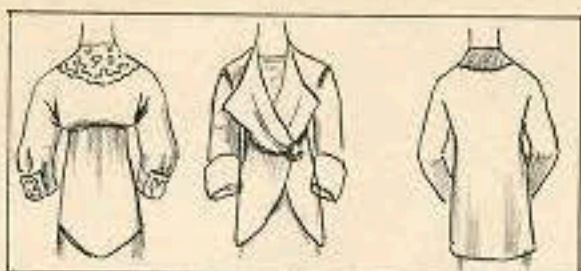
5199

L<sub>g</sub> 51.04. 307

"De Gracienne"  
Geïllustreerde *Agglaja*

ca. 19 13  
174





Imp. Fallotini & Grosjean, Paris.

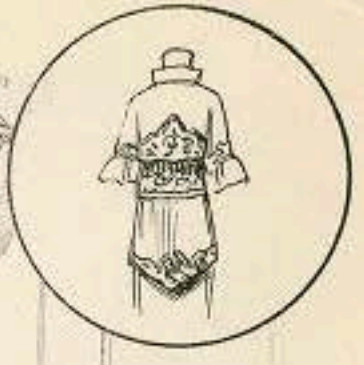
5205

L4 51.64. 294

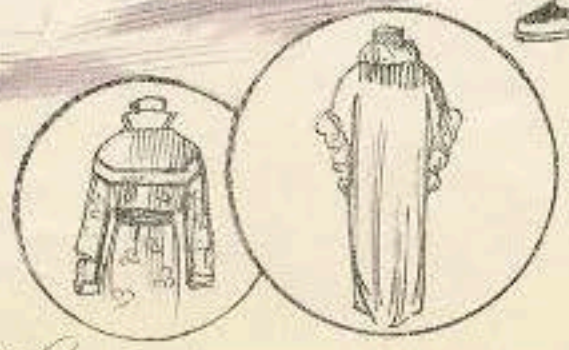
"De Gracieuse"  
Geïllustreerde Aglaja

1913  
176





5206



ca. 1913  
161

"De Graciense"

L457.64.295

Geïllustreerde *Agglajal*





L. 51. 64. 293

Imp. Fattori & Groppe, Paris

"De Gracienne"  
Geïllustreerde Aglaja

ca 1913  
180

5207





Les Grandes Modes de Paris  
N° 157 PL. 1924

Supplément

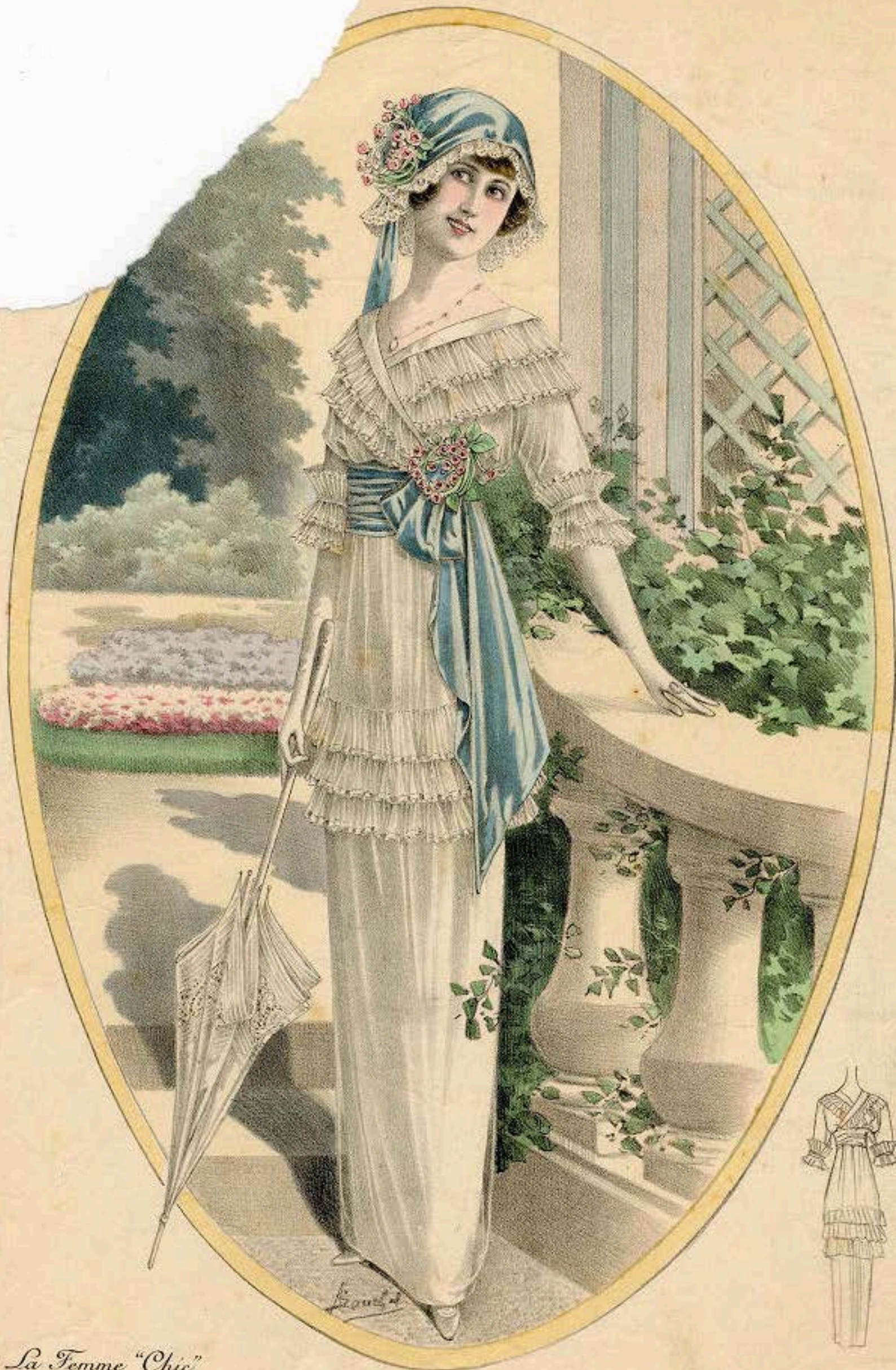
1913

A LA PORTE S<sup>t</sup> MARTIN "LE CHÈVREFEUILLE"

Toilettes portées par M<sup>lle</sup> Berthe Bady

exécutées par Worth





*La Femme "Chic"*

Supplément

№. 31 Pl. 61

*juillet 1913*

*Pour la Villa*





*La Femme "Chic"*

Supplément

N° 30 Pl. 56

7 Juin 1913

*pour la Campagne*





Dress 6373



Waist 6370; skirt 6371

COSTUME INSTITUTE LIBRARY  
METROPOLITAN MUSEUM OF ART

When this afternoon costume is made as represented above, five yards and one-half of charmeuse forty-four inches wide, five-eighths of a yard of contrasting charmeuse twenty-seven inches wide for the revers and cuffs, five-eighths of a yard of all-over lace eighteen inches wide for the vest, one yard and one-eighth of banding, one yard and one-half of edging four inches wide for the frill and three yards and one-quarter of ribbon eight inches wide for the girdle, will be required for the medium size. The closely plaited peplum demands the most supple silks that retain plaits without adding appreciable bulk. Crêpe meior, crêpe de Chine or liberty may be successfully adapted. Where the peplum is discarded, a wool rep, broadcloth or fine serge will prove equally appropriate.

A combination of designs illustrated above will require for the medium size three yards of moiré silk forty-four inches wide for the skirt and underblouse, two yards of all-over lace forty inches wide for the underblouse and vest, with one-half yard of chiffon forty-five inches wide for facing the yoke and making the sleeve and neck frills. A silk cord harmonizing in tone with the girdle outlines the overblouse. The ends are tassel-trimmed and hang in long, straight lines. A variation of the trimming appears in the skirt garniture. Aside from moiré, the designs are excellently suited to duplication in corded silk, crêpe de Chine, crêpe meior, charmeuse or broché. Notable features of the costume are the Oriental-style girdle, the long steers edged with double chiffon frills and the outline of the underblouse.





SMART STYLES OF BASQUED JACKET COSTUMES.

Tel. 15. Wire: "BROWN," Hebden Bridge.

Tel. 1481. Wire: "RELIABLE," Leeds.

## R. B. BROWN & SONS,

Fustian Manufacturers, **WHOLESALE** Woollen Merchants,  
 Hanging Royd, **CLOTHIERS** Wellington Street,  
 HEBDEN BRIDGE. : : LEEDS : :

Are now supplying best possible value in

### Hard Wearing Fabrics FOR WORKERS IN ALL TRADES.

COTTON CORDS, T'SETS, GENOAS and  
 MOLESKINS in all popular colours. BLU-  
 ETTE, DRABETTES, LINENS and DEMINS  
 for Farmers' and Mechanics Savealls.

PATTERN BOOKS FOR STOCK AND SPECIALS.

Separate Staff for Measured Goods.

London Agent: Mr. F. M. SEAL, 69, Fore St., E.C.

### MENS' & BOY'S WOOLLEN CLOTHING

in best selling materials and latest shapes.

Showerproofs and Winter Overcoats  
 in great variety.

Moss Finished Cheviots and Friezes.

Ladies' Tailored Costumes.

PATTERNS IN BOOKS OR BUNCHES AS REQUIRED.

*"The secret of success is in every garment."*

## IMPORTANT NOTICE TO TAILORS.

Look for this Mark  
 on your Bunches.



The best possible  
 value obtainable.

These Bunches contain **THE VERY LATEST MATERIALS** in Turn-Rain  
 and Covert Coatings, also Fleece Naps, and Heavy Overcoatings.

These are really  
 Good selling Lines

**READY**

Early in  
 September.

TAILORS ONLY SUPPLIED.

**DON'T MISS THIS OPPORTUNITY!**

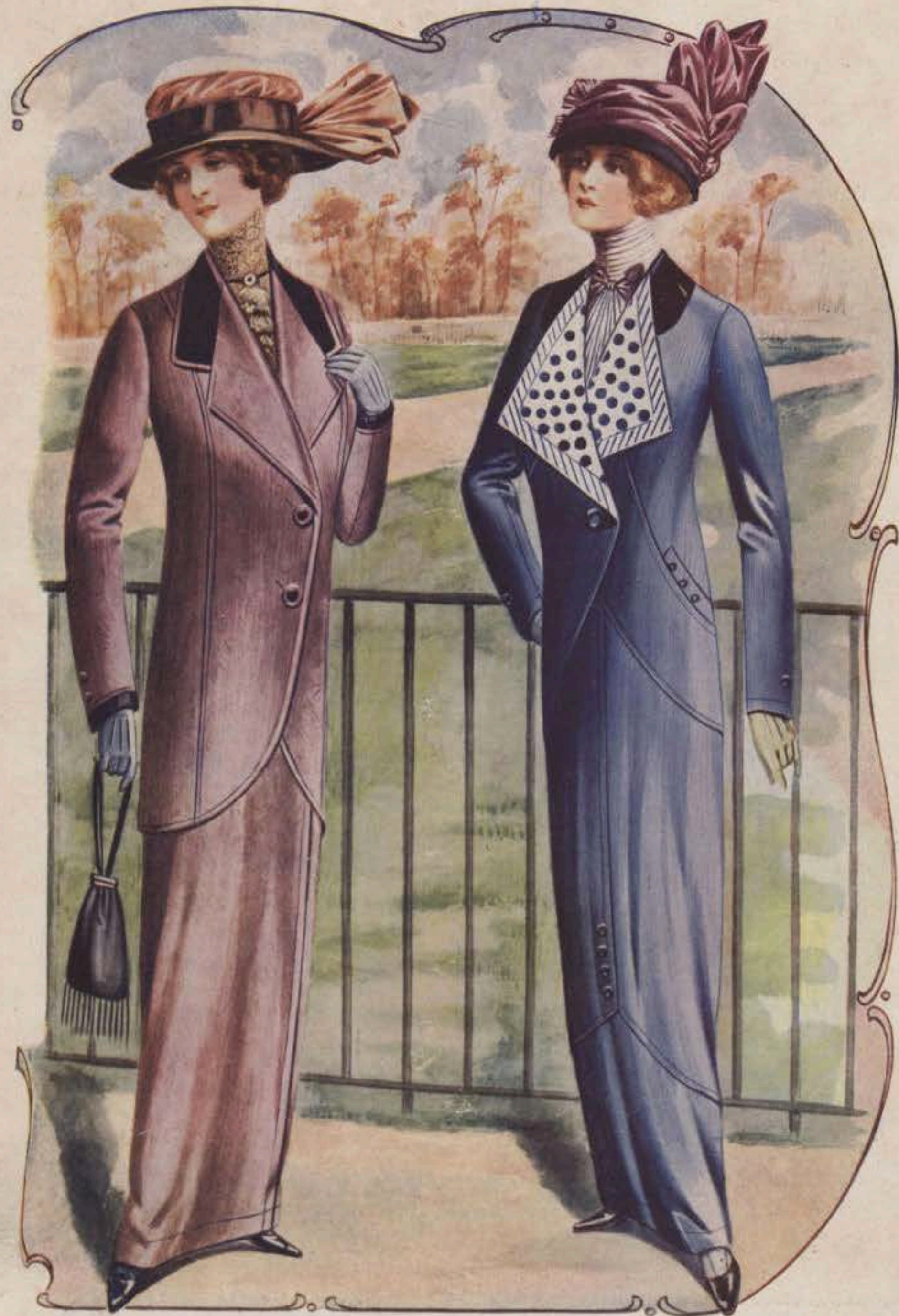
## J. BERTRAM TAYLOR,

Woollen and Trimming Merchant,

**94, Exchange, HUDDERSFIELD.**

Early application is requested on printed Memo.









YOUNG LADIES' TAILOR-MADE COSTUMES.

THE **P**ERFECT **B**ESPOKE **C**LOTHING  
OF **P**RESTON **B**ROOKE & **C**O., LTD.

WILL MAKE BUSINESS HUM!

Send for the P.B. Bunches.

AUTUMN, 1913.

# OVERCOATING BUNCHES

NOW READY.

THE FINEST SELECTION AT POPULAR PRICES.

Included in Bunches are all the Newest Designs.

- Naps. Moss Tweeds.
- Scotch Overcoatings. Beavers.
- Meltons. Covert Coatings.
- Cravenette Showerproofs.

Overcoats to Measure from 15/6 to 40/-

Write To-day.

THE **P**ERFECT **P**RESTON, **B**ROOKE & **C**O. LTD.,  
**B**ESPOKE **C**LOTHIERS,

ELM WOOD MILLS,

## LEEDS.

TELEPHONE:  
2387.

TELEGRAMS:  
'TAILORING, LEEDS.'

FOR  
THE  
POPULAR  
TRADE.

FOR  
THE  
POPULAR  
TRADE.

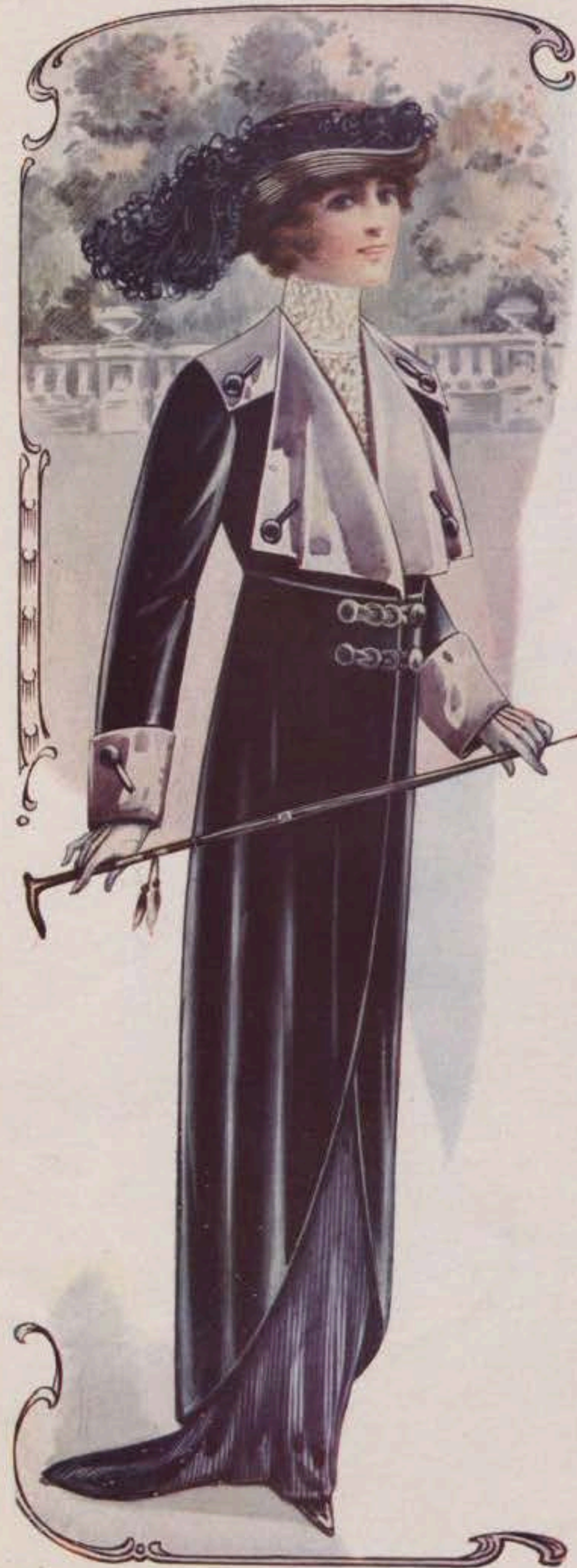
THE  
BEST  
FOR THE  
MEDIUM.

THE  
BEST  
FOR THE  
MEDIUM.

TO  
INCREASE  
YOUR  
BETTER.

TO  
INCREASE  
YOUR  
BETTER.









STYLISH FASHIONS IN AUTUMN COSTUMES.



## THE MERCHANT TAILOR'S WAY TO MORE TRADE.

### SEVEN REASONS WHY THIS

## GREAT POCKET FEATURE

- 1.—It will make a big difference in the smartness and permanent shapeliness of your garments.
- 2.—Prevents the pocket from sagging and the coat fronts from pulling.
- 3.—Stops coat falling off shoulder when fitted in inside breast pockets.
- 4.—Splendid selling talk for your salesmen.
- 5.—Makes a more satisfied customer.
- 6.—Gives your competitor no advantage over you.
- 7.—We are now advertising direct to the consumer.

HAS BEEN TAKEN UP BY THE HIGHEST  
GRADE WEST END, LONDON AND PRO-  
VINCIAL MERCHANT TAILORS, WHO  
HAVE SHOWN THEIR APPRECIATION  
OF SAME BY RENEWING  
THEIR LICENSES.

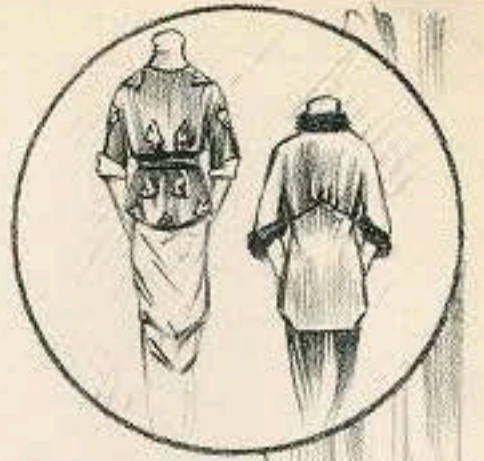
Send a Postcard to-day for particulars of our interesting Proposition.

## BARTELL PATENT POCKET CO.

Featherstone Buildings, London, W.C.

Telephone 3363 CITY.





5139

1912  
146

L4 51.64.236

"De Gracieuse"  
Geïllustreerde Aglayal





29 57. 64. 835-

"De Gracieuse"  
Geïllustreerde Aglayal

col 9/2  
148





Drecoli  
 phot. Gabbot

Ly 57. 64. 231

"De Gracieuse"  
 Geillustreerde Afglajal

ca 1912  
 140

5141