



BALL DRESSES.

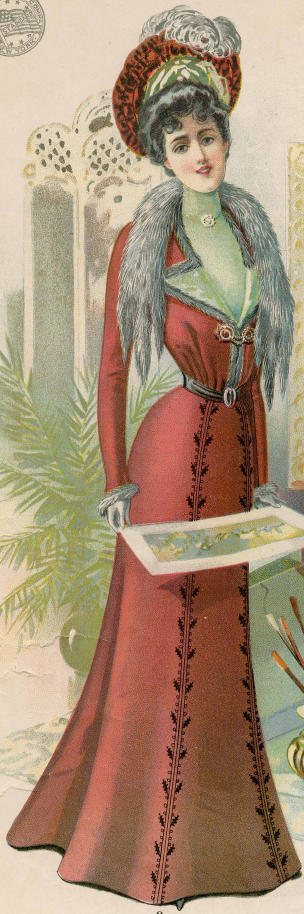
LACE AND SATIN DRESS. FIG. 6.—SATIN AND CRAPE CORSAGE. FIG. 7.—SATIN MERVILLEUX DRESS. FIG. 8.—SICILIENNE AND LACE DRESS. FIG. 9.—GROS GRAIN AND LACE DRESS.

1890
L449-21

THE DESIGNER

JANUARY

1900.



Copyrighted 1899.

PUBLISHED BY THE STANDARD FASHION CO.
NEW YORK, CHICAGO, BOSTON, & ST. LOUIS.

COSTUME INSTITUTE LIBRARY
METROPOLITAN MUSEUM OF ART



No. 5439, LADIES' COAT, AND No. 5436, LADIES' TWO-PIECE SKIRT. Price of each 10d. or 20 cents.
(For description see page 11)

COSTUME INSTITUTE LIBRARY
METROPOLITAN MUSEUM OF ART

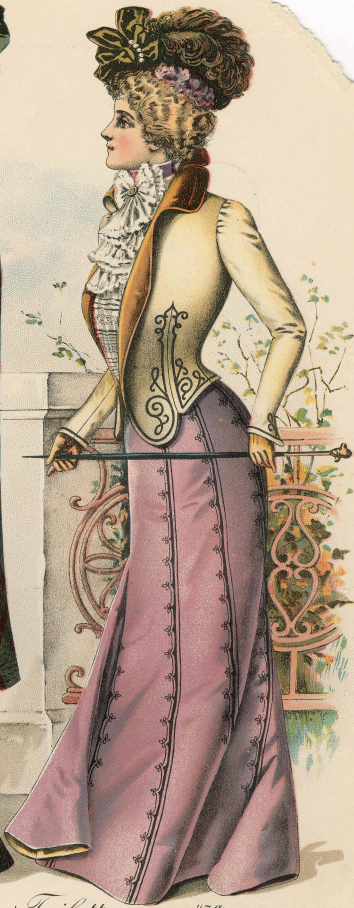


No. 5439, LADIES' COAT, AND No. 5436, LADIES' TWO-PIECE SKIRT. Price of each 10d. or 20 cents.
(For description see page 11)

119



46^a



47^a

Ladies' Toilettes.
 For description see page 16.

OCTOBER, 1900

THE DESIGNER

119



46^a



47^a

Ladies' Toilettes.
 For description see page 16.

OCTOBER, 1900

THE DESIGNER

119



46^a



47^a

Ladies' Toilettes.
 For description see page 16.

OCTOBER, 1900

THE DESIGNER

COSTUME INSTITUTE LIBRARY
METROPOLITAN MUSEUM OF ART



THE DESIGNER

48^a—LADIES' TOILETTE

FOR DESCRIPTION SEE PAGE 16

OCTOBER, 1900

6



JANUARY

1900.



Empire House Toilette!
THE DESIGNER.

Copyrighted 1899.

6



JANUARY

1900.



Empire House Toilette!
THE DESIGNER.

Copyrighted 1899.

COSTUME INSTITUTE LIBRARY
METROPOLITAN MUSEUM OF ART



No. 5451, LADIES' WAIST AND No. 5419, LADIES' THREE-PIECE SKIRT. Price of each 10d. or 20 cents.
(For description see page 15.)

COSTUME INSTITUTE LIBRARY
METROPOLITAN MUSEUM OF ART



No. 5451, LADIES' WAIST AND No. 5419, LADIES' THREE-PIECE SKIRT. Price of each 10d. or 20 cents.
(For description see page 15.)



AUGUST, 1900

SIXTEENTH FIGURE

THE DESIGNER

FOR DESCRIPTION SEE PAGE 20
COSTUME INSTITUTE LIBRARY
METROPOLITAN MUSEUM OF ART



AUGUST, 1900

SIXTEENTH FIGURE

THE DESIGNER

FOR DESCRIPTION SEE PAGE 20
COSTUME INSTITUTE LIBRARY
METROPOLITAN MUSEUM OF ART

89

12



4

5

THE DESIGNER

LADIES' TOILETTES
FOR DESCRIPTION SEE PAGE 16

AUGUST, 1900

89

12



4

5

THE DESIGNER

LADIES' TOILETTES
FOR DESCRIPTION SEE PAGE 16

AUGUST, 1900

116



THE DESIGNER

64th—LADIES' EVENING COSTUME

FOR DESCRIPTION SEE PAGE 20

OCTOBER, 1900



OCTOBER, 1900

63^a—LADIES' TEA GOWN

FOR DESCRIPTION SEE PAGE 20

THE DESIGNER



OCTOBER, 1900

63^a—LADIES' TEA GOWN

FOR DESCRIPTION SEE PAGE 20

THE DESIGNER

132



DECEMBER, 1900.

Ladies' Toilettes.
For description see page 140.

THE DESIGNER

132



DECEMBER, 1900.

Ladies' Toilettes.
 For description see page 140.

THE DESIGNER



THE DESIGNER

48^b-LADIES' STREET TOILETTE

FOR DESCRIPTION SEE PAGE 140

DECEMBER, 1900



THE DESIGNER

48^b-LADIES' STREET TOILETTE

FOR DESCRIPTION SEE PAGE 140

DECEMBER, 1900



7 X.

THE DELINEATOR.

Street Toilette and Evening Cape.

DESCRIBED ON PAGES 30 AND 31.

8 X.

JANUARY, 1901.



5X.

6X.

THE DELINEATOR.

Two Handsome Coats.

DESCRIBED ON PAGE 29

JANUARY, 1901.



54X.

55X.

THE DELINEATOR.

Midwinter Calling Toilettes.

DESCRIBED ON PAGE 200

FEBRUARY, 1901.



56 X.

57 X.

Gowns for Afternoon Wear.

THE DELINEATOR.

DESCRIBED ON PAGES 201 AND 202.
 COSTUME INSTITUTE LIBRARY
 METROPOLITAN MUSEUM OF ART

FEBRUARY, 1901.



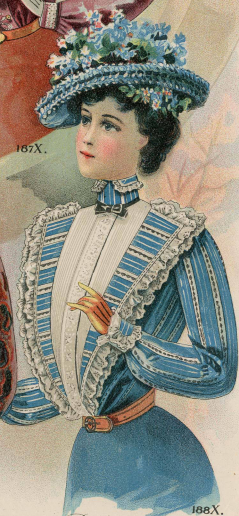
185X.



187X.



186X.



188X.

Some Novel Shirt-Waists or Blouses.

THE DELINEATOR.

DESCRIBED ON PAGES 720 AND 721.

MAY, 1901.

\$14.50

700



189 X.

190 X.

Attractive Calling Toilettes.

DESCRIBED ON PAGES 721 AND 722.

THE DELINEATOR.

MAY, 1901.



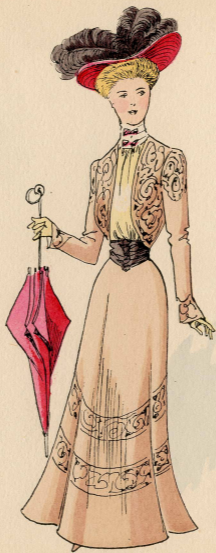
1901



1901



1901



1901



R. 1901

248^c-LADIES' EVENING TOILETTE

OCTOBER

FOR DESCRIPTION SEE PAGE 587

THE DESIGNER



THE DESIGNER

249^c—LADIES' TOILETTE

OCTO

FOR DESCRIPTION SEE PAGE 588
COSTUME INSTITUTE LIBRARY
METROPOLITAN MUSEUM OF ART



179X.

180X.

Dainty Gowns for Early Summer.

THE DELINEATOR.

DESCRIBED ON PAGE 719

MAY, 1901.

51460



181 X.

182 X.

183 X.

184 X.

Varied Effects in a Tailor-Made Shirt-Waist.



48C

49C

JUNE, 1901

Ladies' Toilettes
For description see page 136

THE DESIGNER



THE DESIGNER

50c.—LADIES' COSTUME

FOR DESCRIPTION SEE PAGE 137

JUNE, 1901

COSTUME INSTITUTE LIBRARY
METROPOLITAN MUSEUM OF ART



139C

140C

Ladies' Toilettes
 For description see page 360.

AUGUST, 1901

THE DESIGNER



THE DESIGNER

141^c—LADIES' COSTUME142^c—LADIES' TOILETTE

FOR DESCRIPTIONS SEE PAGES 360 AND 361

AUGUST, 1901

 COSTUME INSTITUTE LIBRARY
 METROPOLITAN MUSEUM OF ART



185C

186C

SEPTEMBER, 1901

Ladies' Toilettes
For description see page 472

THE DESIGNER



187°-LADIES' TOILETTES-188°

THE DESIGNER

FOR DESCRIPTIONS SEE PAGES 472 AND 473
COSTUME DEPARTMENT
METROPOLITAN MUSEUM OF ART

SEPTEMBER, 1901



Les Parisiennes

895
SAISON
D'HIVER
1901-1902

894



1901

1902

957

958

GAIÇON
PARIS



FF
79504
M72
V.3
1900-1905
SERIES I

NO. 1000 OF
THE LIBRARY OF
THE NETHERLANDS
SCHOOL OF DESIGN LIBRARY

La Mode Féminine

de 1900 à 1905

20
Planches
en couleurs



FF79504 M72 V.3



626

636

THE DELINEATOR

Midsummer Calling Gowns

AUGUST, 1902

DESCRIBED ON PAGE 181.



64 G

65 G

Reasonable Street Styles

THE DELINEATOR

DESCRIBED ON PAGES 181 AND 182

AUGUST, 1902

94



666

676

THE DELINEATOR

Shirt-Blouse Costumes

DESCRIBED ON PAGE 182

AUGUST, 1902

FASHIONS OF TO-DAY



The slot seam is a distinguishing characteristic of both the newest skirts and jackets, and a pleasing example of the former is in seven-gored flare style with habit back. The skirt may be in short round or instep length, as preferred, and is especially adapted to the development of Summer-weight woollen fabrics and linens and poncee as well. Machine-stitching provides the decoration.

A new jacket showing slot seams somewhat suggests the Norfolk style and may be made with or without the straps, while the closing is effected with a fly, and the sleeves are in two-seam coat style. Covert and light-weight cloth and chevrot are suitable materials for this jacket, which would be a fitting accompaniment to the skirt just described.

A shirt-waist in slot-seam effect with Duchess front closing is an appropriate mode for linens, poncees and cotton canvas and will be equally modish in solid-color taffeta and peau de sole. The lining may be used or not.

That the bolero will continue in favor as an adjunct to the fashionable bodice is evidenced by the variety of modes exhibited. An attractive example made over a simple waist of contrasting goods has a plain, rather close-fitting back and the fronts laid in box-plaits, while a shawl collar adds to its becomingness. The over-sleeves, in close-fitting elbow length, are slashed up the back, and the puffs fall gracefully from beneath. Any mode of trimming may be used.

No more fitting accompaniment to the bodice described above could be found than a skirt consisting of a five-gored foundation and a three-piece skirt box-plaited to flounce depth and made with or without the yoke, from beneath which the upper part of the skirt should be cut away. All-over lace or bias strips of silk or of the material from which the skirt is made, joined with faggoting, should be used to form the yoke.

Variety in shirt-waists is the order of the day, and original designs for Summer are hailed with delight. A new waist is tucked and is distinguished by the Duchess front closing and removable chemisette. A round, flat collar headed with a narrow strap crossing in front is a novel feature, but this may be omitted. The mode, termed the Monte Carlo shirt-blosure, is adapted to a variety of mate-

rials, linen, poncee and soft woolens being best suited to it.

The slender woman who plans her garments upon becoming shirring effecting a deep, round yoke, back and front and being arranged on the upper part of the full bishop sleeves as well. The closing is made at the back, and the neck may be high or in Dutch or low round style, as is best suited to the wearer, and the sleeves in three-quarter or full length. A collar and sleeve bands formed of bias bands of silk joined with faggoting would be a pleasing finish when the high neck and long sleeves are selected. Soft, dainty muslins, organdies, net and even veilings are suggested as suitable fabrics.

For general Summer wear there is no more serviceable as well as fashionable garment than the shirt-waist dress fashioned from foulard, taffeta, poncee, linen, piqué or some of the numerous lawns or gingham. In one of the smartest new designs the shirt-waist has tucks arranged to give the effect of a wide plait at the centre-front, with narrow tucks in yoke length at each side and a single tuck coming from the shoulder seam to the waistline. The back is also tucked, and deep or hand cuffs may finish the bishop sleeves. The five-gored flare-skirt may be in short sweep or round length, with gathers or an inverted box-plait at the back, and with one or two graduated circular flounces that may extend about the skirt or terminate at the side-front seams. Machine-stitching is the preferred decoration.

Equally suitable for dainty silk-and-wool and wash fabrics is a waist made with a round yoke and closed at the back. The neck may be either high or low or in Dutch round style and the sleeves in three-quarter length finished with a frill of the goods or of lace, or in full length completed with wristbands; tucks are laid in the upper part. A scolloped berthia following the yoke outline is a pretty feature, but it may be omitted.

Another charming waist is characterized by a sectional yoke and clusters of tucks in the bloused front and smooth-fitting backs. The neck may be high or in Dutch square style. The closing is made at the back, and the sleeves are of the popular bishop shaping, with deep cuffs. An association of contrasting goods is suggested in this mode, and its decorative possibilities are noteworthy.



FIGURE 68 G.—TOILETTE FOR THE PROMENADE.—The patterns are Jacket 6195, price 90, or 50 cents; and Skirt 6184, price 90, or 20 cents.
(Described on Page 183.)



98D

99D

Ladies' Toilettes

JANUARY, 1902

For descriptions see page 256

THE DESIGNER



THE DESIGNER

100^D—LADIES' JACKETS—101^D

FOR DESCRIPTIONS SEE PAGE 256

JANUARY, 1902

COSTUME INSTITUTE LIBRARY
METROPOLITAN MUSEUM OF ART

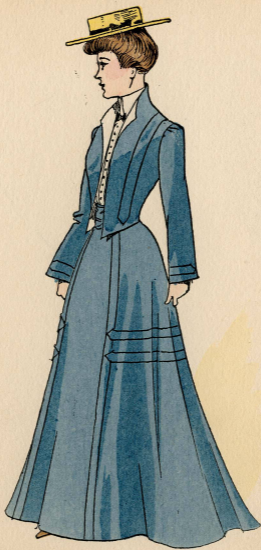
1901
1902



1901

1902





1902



1902



1902



1902

77



THE DESIGNER

64^b

LADIES' TOILETTES

65^b

FOR DESCRIPTION SEE PAGE 144

77



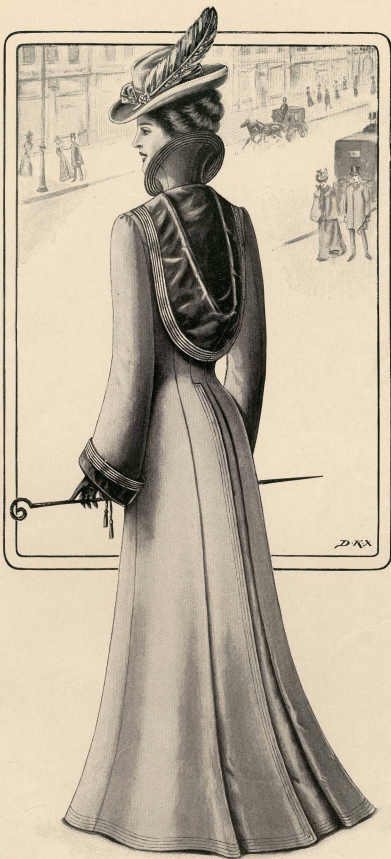
THE DESIGNER

64^b

LADIES' TOILETTES

65^b

FOR DESCRIPTION SEE PAGE 144



36—LADIES' LONG COAT IN FULL OR THREE-QUARTER LENGTH

THE DESIGNER

FOR DESCRIPTION SEE PAGE 144

COSTUME INSTITUTE LIBRARY
METROPOLITAN MUSEUM OF ART

138



FIGURE 216 G
(Waist 6408)
(Skirt 6416)

FIGURE 217 G
(Waist 6419)
(Skirt 6407)



FIGURE 218 G
(Jacket 6442)
(Skirt 6421)

FIGURE 219 G
(Coat 6399)
(Skirt 6459)

106



FIGURE 104 G
(Costume 6207)

FIGURE 105 G
(Coat 6220)
(Skirt 6213)



FIGURE 106 G
(Coat 6214)
(Skirt 6260)

FIGURE 107 G
(Coat 6232)

THE DELINEATOR

DESCRIBED ON PAGE 330

SEPTEMBER, 1902

330
COSTUME INSTITUTE LIBRARY
METROPOLITAN MUSEUM OF ART



Les Grandes Modes de Paris
Janvier 1903. N. 25
Ll. 210

Coilette de visite
exécutée par Vaganey



Les Grandes Modes de Paris
Janvier 1903. N° 25

Coilette de ville



Les Grandes Modes de Paris
Janvier 1903 N^o 25
Bl 211

Coilette de Mariage
"Bouquet Toscarina de Pinaud"



Les Grandes Modes de Paris
Janvier 1903 - N. 25
Pl. 208

Coilette de dîner
exécutée par Bonnaire



1^{er} Juillet 1903.

Reproduction interdite

N^o 5307

JOURNAL DES DEMOISELLES

Modes de Paris

Coiffure de la M^{me} FORCILLON BEAUS, 165, Rue St. Honoré, Place du Théâtre Français.
 Corsage de la M^{me} GUELLE, 3, Place du Théâtre Français. Robes de la M^{me} ROULLIER-FRANCK.

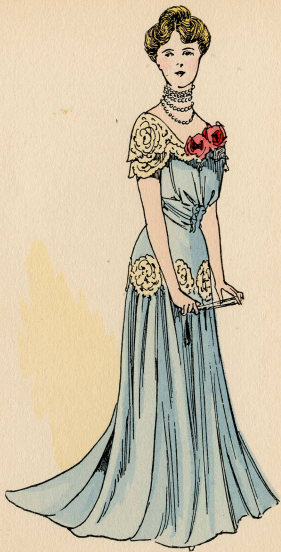
14, Rue Drouot.



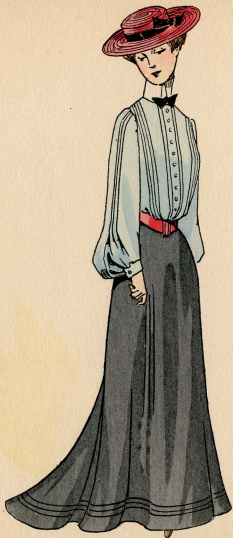
1903



1903



1903



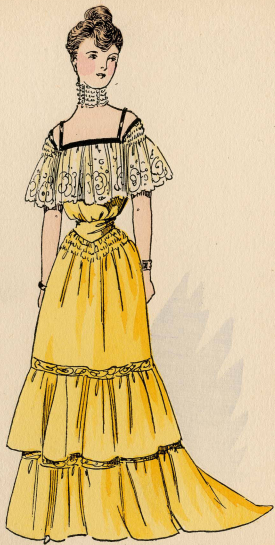
1903



1904



1904



1904



1904



Supplément au N°
du 1^{er} Juillet 1904

Reproduction interdite

Imp. Falconer, Paris

N° 5335

JOURNAL DES DEMOISELLES

Modes de Paris

Coiffure de M^{me} FORCILLON SEURS, 163, Rue St. Honoré, Place du Châtea Français,
Corsets de la M^{me} GUELLE, 52, Rue Saffitte, Etiffes de la M^{me} ROULLIER FRÈRES
27, Rue du 4 Septembre, Parfumerie ROUBIGANT, 12, Faub^g St. Honoré.

14, Rue Drouot



Supplément au N°
du 1^{er} Août 1904

Reproduction interdite

Imp. Falconer Paris

N° 5337

JOURNAL DES DEMOISELLES

Modes de Paris

Coiffes de la M^{me} FORCILLON Sœurs, 165, Rue St. Honoré; Place du Théâtre Français
Corsets de la M^{me} GUELLE, 52, Rue Saffitte; Coiffes de la M^{me} ROULLIER FRÈRES
27, Rue du 4 Septembre; Parfumerie HOUBIGANT, 13, Faub^g St. Honoré.

14, Rue Drouot



Supplément au N°
du 15 Septembre 1904

Reproduction interdite

Imp. Falconnier Paris

N° 5340

JOURNAL DES DEMOISELLES

Modes de Paris

Coiffures de M^{mes} FORCILLON Sœurs 105, Rue St. Honoré, Place du Théâtre Français
 Corsages de la M^{lle} GUELLE 32, Rue Saffitte, Cloffes de la M^{lle} ROULLIER FRÈRES
 27, Rue du 4 Septembre, Parfumeurs HOUBIGANT 12, Faub^{ourg} St. Honoré.

14 Rue Drouot



THIS SERVICEABLE TOILETTE COMPRISES CAPE No. 8028, IN A DEVELOPMENT OF BLACK CRAVENETTE, AND SKIRT No. 8016, MADE OF BLACK VENETIAN.

A SMART TWO-PIECE COSTUME, No. 8017, IS HERE ILLUSTRATED IN MIXED BROWN CHEVIOT, TRIMMED WITH BRAID, AND WITH MINK COLLAR AND CUFFS.

LADIES' COATS AND JACKETS

tains a measurement of about five yards and one-half.

The bloused back is a stylish feature of the jacket, but if this is not fancied it may be tightly drawn down. Un-

der-arm and shoulder seams are used in the construction, the fulness at the waist being controlled by gathers, and a peplum may be added under the fitted girdle-belt if desired. The pattern provides a stole which follows the neck and front edges, and a collar-facing, the latter being used when the jacket is worn closed. Shoulder capes may fall over the loose bishop sleeves, and the straight wristbands are sometimes concealed by cuffs in gauntlet style.

Rough-finished invisible checks are stylish.

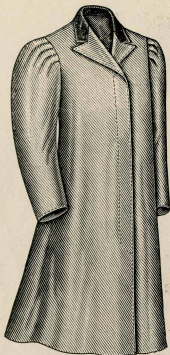
Pattern 8017 is in 7 sizes from 32 to 44 inches bust measure. For the medium size, it needs 8½ yards of goods 50 inches wide. Price, 25 cents.



8028—Ladies' or

Misses' Cape—A practical mode is illustrated on page 888 in plaid-backed blue golf cloth, and in slate-gray cravenette combined with taffeta. It closes in coat style with buttons or with the front edges meeting, and is made with or without an inverted box-pleat at the back, a seam occurring at the centre. Darts assist in the smooth adjustment over the shoulders, and a hood may be used in conjunction with a Medici or a rolling collar. Inside straps secured on the shoulders are crossed in front and fastened at the back with a button and buttonhole; these assist in holding the cape in place, but are not indispensable. Allowance is made in the pattern for long three-quarter and medium hip lengths.

Weather-proof materials are the most serviceable selec-



Automobile Length.

Pattern 8028 is in 5 sizes from 30 to 46 inches bust measure. For the medium size, the long three-quarter cape needs 3½ yards of goods 54 inches wide; for medium hip cape,



Short Three-Quarter Length.
8006—LADIES' COAT, IN AUTOMOBILE OR REGULATION OR SHORT THREE-QUARTER LENGTH, WITH SEMI-FITTED BACK, NOTCHED OR SHAWL COLLAR AND COAT, BISHOP OR FLOWING SLEEVES PLEATED OR GATHERED AT THE TOP.



Regulation Three-Quarter Length.

2¾ yards in the same width, with ¼ yard of velvet and 1 yard of silk. Price, 20 cents.



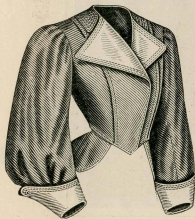
8006—Ladies' Coat—Automobile or regulation or short three-quarter length may be given the coat shown above in cravenette with a notched collar of velvet, and in tan covert. The back is semi-fitted and has a centre seam. The fronts close in a fly or with visible buttons, and the tops are turned back in lapels to meet the notched collar, or, if preferred, a shawl collar may afford neck completion. The sleeves may be of the bishop order with bands and cuffs, or in coat or flowing style; in any instance plaits or gathers dispose of the fulness at the top.

Tweed, covert, frieze and homespun coats are much worn. Pattern 8006 is in 8 sizes from 32 to 46 inches bust measure. For the medium size, the coat in automobile length needs 3¾ yards of material 54 inches wide, in short three-quarter length 3½ yards in the same width, each with ¼ yard of velvet. Price of pattern, 20 cents.



8057—Ladies' Tucked Eton Jacket—A smart mode is

here pictured in Madonna-blue broadcloth with white satin cuffs and revers facings, in hunters' green velvet with Renaissance lace and in brown covert. Seams at each side of the back and front extend to the shoulders, being concealed under a tuck, and under-arm and shoulder seams are used. The Directoire revers as well as those of regulation size and shaping are provided for, and a collar-facing is employed, if fancied. The fronts may lap and close invisibly, or be worn open. A separate peplum attached to the belt and laid in plaits at each side of the back opening is a novel fea-



8057—LADIES' TUCKED ETON JACKET, WITH DIRECTOIRE OR REGULATION REVERS AND BISHOP OR COAT SLEEVES, WITH OR WITHOUT THE COLLAR-FACING OR SEPARATE PEPLUM.



ture, but is not indispensable. Bishop sleeves, finished with cuffs in flaring style, and coat sleeves are included. Cheviot, habit cloth, zibeline, face-cloth, vigoureux, cravenette, étamine and tweed are suitable for reproduction, and will be stylish with a skirt of the same material.



ROYAL-PURPLE VELVET WITH EMBROIDERED CLOTH DECORATION IS REPRESENTED IN THIS CHARMING COAT, No. 7930, AND THE SKIRT, No. 7951, IS OF LAVENDER CRÉPE DE CHINE CLOTH.

THIS QUIANT COSTUME IS No. 7946 IN APPLE-GREEN CHIFFON BROADCLOTH, A DEEPER SHADE OF VELVET, FANCY BUTTONS, WHITE BLOCKSD SILK AND LINGERIE FRILLS ADDING INTEREST.

❖ LADIES' COSTUMES, LADIES' OR MISSES' COATS ❖



Regulation Round Length.



Frou-Frou Medium Sweep.



Regulation Round Length.



may ornament the lower edge, where a measurement of about four yards and three-fourths is allowed the skirt proper in the medium sizes and about seven yards and one-half the flounce. Medium sweep and round length in regulation or frou-frou style are provided for, and a five-gored foundation skirt is included.

7966—LADIES' COSTUME, IN FROU-FROU OR REGULATION MEDIUM SWEEP OR ROUND LENGTH; CONSISTING OF A DRAPE SURPLICE WAIST, IN HIGH, ROUND OR POINTED NECK, WITH FULL OR THREE-QUARTER LENGTH SLEEVES IN SINGLE OR DOUBLE PUFFS OR WITH ELBOW SLEEVES, WITH OR WITHOUT THE BERTHA OR DIRECTOIRE BACK TABS; AND A FIVE-GORED SKIRT, WITH OR WITHOUT THE DEEP OR SHALLOW FIVE-GORED FLOUNCE IN PUFF OR PLAIN EFFECT; MADE WITH OR WITHOUT THE FIVE-GORED FOUNDATION SKIRT.

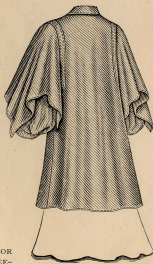
such fabrics as rubber-backed taffeta, cravenette, etc., being adaptable, and coating stuffs such as melton, vigoreaux and serge are used.

Pattern 7936 is in 8 sizes from 30 to 44 inches bust measure.

For the medium size, the coat in an automobile length will need $4\frac{3}{4}$ yards of material 54 inches wide; in short three-quarter length, $3\frac{3}{4}$ yards in the same width, each with $1\frac{1}{2}$ yard of all-over lace to cover cape and cuffs, and $1\frac{3}{4}$ yard of all-over lace in the same width to under-face the fronts. Price of pattern, 20 cents.



Long Three-Quarter Length.



Long Three-Quarter Length.

7956—LADIES' OR MISSES' COAT OR WRAP, IN FULL OR LONG THREE-QUARTER LENGTH, WITH DEEP ARMHOLES AND SLEEVES EXTENDING TO THE NECK IN EPAULETTE STYLE OR TERMINATING AT THE ARMHOLES, WITH OR WITHOUT THE CAPE OVER-SLEEVES. (EQUALLY DESIRABLE FOR EVENING, RAIN-PROOF AND TRAVELLING FABRICS.) (Described on page 678.)

7966—Ladies' Costume—

For the costume pictured above, light heliotrope crêpe Olga with point de Venise lace, and pink louisine were selected. Five gores were used for the skirt, gathers regulating the fulness at the top. A deep or shallow flounce, also formed of five gores, and in puff or plain effect, with or without a frill heading,

The drapery on the bodice is arranged in surplice style, in either of two outlines, a fitted lining affording support, and the back is laid in tapering plaits to the waist-line and may be extended to form tabs or the new Directoire tails, as they are called. A round back yoke and a deep front

yoke are included, and the pattern makes provision for round and pointed



Full Length.



OLD-TIME SIMPLICITY CHARACTERIZES THIS GRACEFUL FROCK MADE FROM SHIRT-WAIST No. 8010 AND SKIRT No. 8011 IN LAVENDER CRÉPE DE CHINE ADORNED WITH RUFFLES.

THIS CHARMING COSTUME, No. 8004, IS REPRODUCED IN PEACH-PINK SILK BATISTE, THE ONLY ORNAMENTATION BEING TUCKS AND SHIRRINGS.



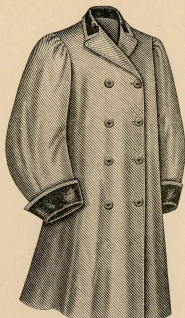
OLD-TIME SIMPLICITY CHARACTERIZES THIS GRACEFUL FROCK MADE FROM SHIRT-WAIST No. 8010 AND SKIRT No. 8011 IN LAVENDER CRÉPE DE CHINE ADORNED WITH RUFFLES.

THIS CHARMING COSTUME, No. 8004, IS REPRODUCED IN PEACH-PINK SILK BATISTE, THE ONLY ORNAMENTATION BEING TUCKS AND SHIRRINGS.

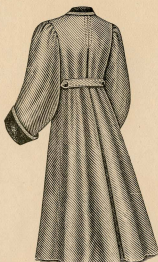
LADIES' OR MISSES' COATS



Full Length.



Three-Quarter Length.



Full Length.

8002—LADIES' OR MISSES' DOUBLE-BREADED COAT, IN FULL OR THREE-QUARTER LENGTH, WITH NOTCHED COLLAR OR SHAWL COLLAR FACING, AND BISHOP SLEEVES

WITH WIDE OR REGULATION WRISTS, OR WITH COAT SLEEVES, AND WITH THE INVERTED FULLNESS AT THE BACK STITCHED TO YOKE OR WAIST-LINE DEPTH, WITH OR WITHOUT THE BACK-STRAP.



Three-Quarter Length.

This is an excellent mode for the display of figured materials and fancy effects, and also affords unlimited opportunity for trimming when plain fabrics are employed.

Pattern 8010 is in 7 sizes from 32 to 44 inches bust measure. For the medium size, it will need 5 yards of material 18

inches wide, or 2 $\frac{3}{4}$ yards 44 inches wide, with $\frac{3}{4}$ yard of all-over lace for yoke, collar and cuffs. Price, 20 cents.

8002—Ladies' or Misses' Double-Breasted Coat—A coat of fashionable shaping is represented above in gray cravenette with darker velvet, and in tan kersey. Shoulder and under-arm seams give easy adjustment, and full and three-quarter lengths are considered. The fronts lap in double-breasted fashion and may close with buttons and buttonholes or in a fly. The tops of the fronts are turned back in lapels and meet the ends of the notched collar; unless a shawl collar facing is preferred. The back has an inverted box-plait stitched to yoke or waist-line depth and the fulness may be held in by a back-strap. Two-seam coat sleeves are given as well as bishop sleeves having a dart seam at the back to remove the extra fulness and shaped with wide or regulation wrists which are finished with flaring turn-back cuffs. A coat in this style is smart and practical for a raincoat as well as for evening and general wear.

Pattern 8002 is in 8 sizes from 30 to 44 inches bust measure. For the medium size, the coat in full length needs 5 $\frac{1}{4}$ yards of goods 54 inches wide; in three-quarter length, 3 $\frac{1}{2}$ yards in the same width; each with $\frac{1}{2}$ yard of velvet 20 inches wide (bias) to inlay cuffs and notched collar. Price, 20 cents.

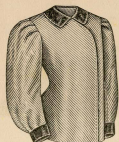
8007—Ladies' Double-Breasted Coat—Two styles of neck finish are provided for the coat shown opposite—a notched collar and a flat collar—either effect being modish.

A smart two-piece costume might be of Melrose suiting, Mannish suiting, frosted zibeline, frosted broadcloth, knickerbocker tweeds, storm cheviot, melton and kersey are among the best materials for coats and suits.

Pattern 8007 is in 7 sizes from 32 to 44 inches bust measure. For the medium size, the three-quarter coat will need 3 $\frac{3}{4}$ yards of material 54 inches wide; for coat in medium hip length, 2 $\frac{1}{2}$ yards in



Three-Quarter Length.



Medium Hip Length.



Long Hip Length.

8007—LADIES' DOUBLE-BREADED COAT, IN THREE-QUARTER OR LONG OR MEDIUM HIP LENGTH, WITH NOTCHED OR FLAT COLLAR, AND BISHOP OR COAT SLEEVES GATHERED OR PLAITED AT THE TOP, WITH OR WITHOUT THE FANCY CUFFS.

the same width, each with $\frac{1}{2}$ yard of velvet 20 inches wide for collar and wristbands. Price of pattern, 20 cents.



—910—
8741
LADIES WAIST PRICE 15¢
—010—



—910—
8739
LADIES SHIRT WAIST PRICE 15¢
—010—



8737
LADIES WAIST PRICE 15¢

SEE DESCRIPTION ON OPPOSITE PAGE

STYLISH WAISTS
FOR LADIES.

ISSUED ONLY BY The McCall Co.,
113-115-117 WEST 31ST ST., NEW YORK CITY.





Ladies' Shirt Waist, 8743—Skirt, 8746

Ladies' Shirt Waist, 8735—Skirt, 8139

McCALL PATTERNS (All Seams Allowed)

Smart Shirt-Waist Suits

See Descriptions on Opposite Page



ON THIS FIGURE ARE SHOWN THE NEW TUCKED ETON JACKET, No. 8057, AND THREE-PIECE SKIRT No. 8062 IN GRAY CANVAS ETAMINE, WITH REVERS OF BLACK SATIN.

A STYLISH SEVEN-EIGHTHS COAT, No. 8013, OF BLACK COVERT, WITH VELVET CUFFS AND COLLAR, WAS ASSOCIATED WITH SKIRT No. 8018, MADE OF BLUE ZIBELINE.

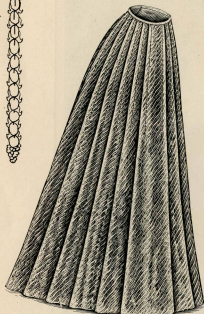
Gift of Leo Van Witeon

LADIES' SKIRTS

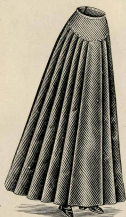
cheviot and kindred materials make stylish skirts, and rows of stitching or narrow braid may be used

Pattern 8060 is in 8 sizes from 20 to 34 inches waist measure. For 24 inches waist, the outside skirt requires 5¼ yards

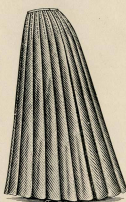
50 inches wide of material without a nap or other distinct up or down; with a nap, 5¾ yards in the same width; for foundation, 6¾ yards 20 inches wide. Price of pattern, 25 cents.



Round Length.



Instep Length.



Short Round Length.

8050—LADIES' SEVEN-GORED KILT-PLAIED SKIRT, IN ROUND, SHORT ROUND OR INSTEP LENGTH, WITH OR WITHOUT THE YOKE, OR THE STITCHING TO ANY YOKE OR FLOUNCE DEPTH.

(Described on page 902.)

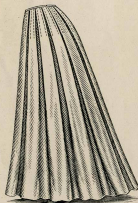
to trim when the yoke is employed.

Pattern 8050

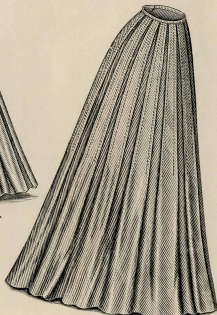
is in 8 sizes from 20 to 34 inches waist measure. For 24 inches waist, the skirt will require 6¾ yards 44 inches wide

graceful lines to the floor. Two wide tucks above a deep hem form a pretty finish for the lower edge of the wrapper which is made with a medium sweep. The neck may be high with a standing collar or in pointed outline, a flat collar of lace being used or not in either instance. The sleeves are in full length with the linings faced to form deep cuffs

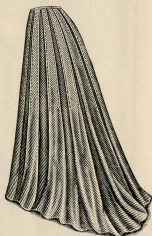
is in 8 sizes from 20 to 34 inches waist measure. For 24 inches waist, the skirt will require 6¾ yards 44 inches wide



Short Round Length.



Round Length.



Medium Sweep.

8060—LADIES' Nine-Gored Skirt—

The tucked skirt is as popular as ever for walking and general wear, and a stylish design is here portrayed in Oxford cravenette. Nine gores are used, and a box-plait effect is given by the arrangement of the tucks, which are stitched to any yoke or flounce depth, the tucks at the back being brought together to dispose of the extra fullness which is laid in an underfolded box-plait. The lower edge in the medium sizes affords a measurement of about five yards and three-fourths. Medium sweep, round and short round lengths are considered in the pattern, and a foundation skirt composed of five gores with an inverted box-plait at the back is supplied, but is not indispensable.

Donegal tweed is very serviceable for everyday wear, and the mannish mixtures are smart. Kersey, habit cloth, zibeline, camel's hair and serge are recommended, with stitching of self or a contrasting color,

trimmed with ruchings of ribbon would be dainty. Nun's-veiling, crêpe de Chine, poncee, China silk, voile and washable fabrics are used.

or in three-quarter length with frills of lace, and may be sewed to conventional or deep armholes. Lace appliqué outlines the closing and the deep armholes.

A pretty wrapper might be made of silk mull of a delicate pink color with a collar of tucked mull edged with Valenciennes lace, and a matinee of ivory cashmere



MUSTARD-BROWN CANVAS ÉTAMINE IS REPRESENTED IN THIS STYLISH COMBINATION OF COAT No. 8007 AND SKIRT No. 8016, VELVET BEING USED FOR THE CUFFS AND COLLAR.

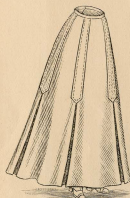
A UNION OF COAT No. 8002 AND SKIRT No. 8014 RESULTED IN THIS STYLISH WALKING SUIT OF GRAY-GREEN HABIT CLOTH, RELIEVED BY TOUCHES OF VELVET.



LADIES' COSTUMES AND COATS



Medium Hip Length.



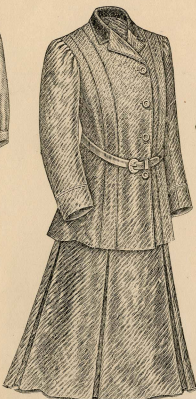
Inate Length.

8012—Ladies' Two-Piece Costume—A stylish coat-and-skirt costume of serviceable material is indispensable to the present-day wardrobe, and the possession of several such suits is an advantage. The one here illustrated is of plain and mixed goods. Round, short round and instep lengths are provided for the skirt, in the construction of which seven gores are used. Inverted fulness is introduced at flounce depth in each side seam, affording a measurement at the lower edge with the plaits drawn out in the medium sizes of about six yards and one-fourth. The fulness at the back is also inverted.

Box shaping characterizes the coat, which is designed for three-quarter, long or medium hip length, and secured at the waist with a belt or back-strap, if fancied. The side-front and side-back seams extend to the shoulders, and a fancy or a plain yoke may top the mode. A rolling collar or one in regulation coat style (in this instance of velvet), forming notches where it meets the lapels may finish the neck, and the front closes invisibly or with buttons. The use of straps on the seams of the coat and skirt is optional. Two forms of sleeves are given, the regulation two-seam coat and the wide bishop, the latter with fancy band cuffs secured under buttons.

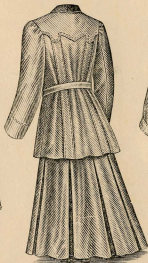
Fabrics that can withstand inclement weather and hard usage are most desirable for such costumes.

Pattern 8012 is in 7 sizes from 32 to 44 inches bust



Round Length.

WITHOUT THE FANCY OR PLAIN YOKE, BACK-STRAP OR A BELT; AND A SEVEN-GORED SKIRT, WITH INVERTED FULNESS AT EACH SIDE SEAM TO FLOUNCE DEPTH AND WITH AN INVERTED BOX-PLAIT AT THE BACK.

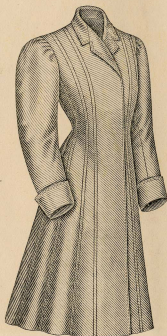


Short Round Length.

8012—LADIES' TWO-PIECE COSTUME, IN ROUND, SHORT ROUND OR INSTEP LENGTH, WITH OR WITHOUT THE STRAPS; CONSISTING OF A BOX COAT, WITH SEAMS TO THE SHOULDERS AND IN THREE-QUARTER OR LONG OR MEDIUM HIP LENGTH, WITH COAT OR BISHOP SLEEVES AND NOTCHED OR ROLLING COLLAR, WITH OR WITHOUT THE FANCY OR PLAIN YOKE, BACK-STRAP OR A BELT; AND A SEVEN-GORED SKIRT, WITH INVERTED FULNESS AT EACH SIDE SEAM TO FLOUNCE DEPTH AND WITH AN INVERTED BOX-PLAIT AT THE BACK.

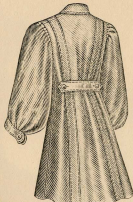


Short Three-Quarter Length.



Seven-Eighths Length

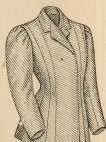
8013—LADIES' GORED COAT OR JACKET, IN SEVEN-EIGHTHS, REGULATION OR SHORT THREE-QUARTER OR LONG HIP LENGTH, WITH COAT OR BISHOP SLEEVES AND NOTCHED COLLAR OR SHAWL COLLAR-FACING, WITH OR WITHOUT THE VEST OR CUFFS.



Three-Quarter Length.

measure. For the medium size, it calls for 9 $\frac{3}{4}$ yards of material 50 inches wide, with $\frac{3}{4}$ yard of velvet. Price, 25 cents.

8013—Ladies' Gored Coat or Jacket—The fitted coat is much favored and is equally popular in seven-eighths, regulation and short three-quarter and long hip lengths. All of these lengths are given for the mode here pictured, and



Long Hip Length.



Three-Quarter Length.

Gift of Mrs. W. W. W. W.



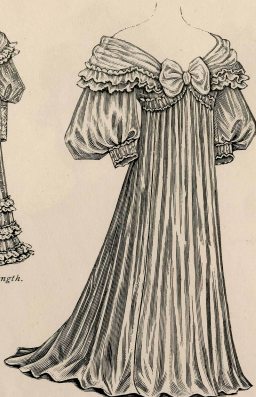
BROADCLOTH OF A PINKISH-RED TINT WAS SELECTED FOR MAKING THIS TWO-PIECE COSTUME (No. 8012) WITH A DARKER SHADE OF SUÈDE FOR THE COLLAR, BELT AND BUTTONS.

ZIBELINE IN ONE OF THE POPULAR PLUM SHADES IS PICTURED IN THIS REPRODUCTION OF COAT No. 8013 AND SKIRT No. 8018, BLACK TAFFETA BANDS AFFORDING STYLISH CONTRAST.

LADIES' DRESSES; LADIES' OR MISSES' CAPES



Frou-Frou Round Length.



Frou-Frou Long Sweep.



Regulation Long Sweep.



Regulation Round Length.

8059—LADIES' EMPIRE DRESS, IN FROU-FROU OR REGULATION LONG SWEEP OR ROUND LENGTH; CONSISTING OF A BODY, WITH HIGH OR LOW NECK AND FULL OR THREE-QUARTER LENGTH SLEEVES, WITH OR WITHOUT THE FICHU-BERTHA; AND A FIVE-GORED SKIRT, PUFF-SHIRRED TO THE BODY.

plied. The closing is made at the centre of the front, and a softly folded fichu-berttha bordered with lace or self ruffles may give a quaint air. Tuck-shirrings arranged to form a puff adjust the fullness of the five-gored skirt to the body, and frou-frou or regulation long sweep or round length may be adopted with lace trimming ruffles or a plain effect. The sleeves are tuck-shirred to form puffs at the lower edge and mounted on two-seam



Long Hip Length.



Seven-Eighths Length.



Seven-Eighths Length.

a fly closing is used. The front and back are formed of sections seamed to the shoulders and two under-arm gores give stylish shaping, the seams being strapped if desired. A vent at the back is provided for in the making,

but the seam may be closed all the way if preferred. A stylish finish is given the neck by either a notched collar or a shawl collar-facing, and choice may be made of coat or bishop sleeves, with cuffs or without.

Dull-blue vigoureux zibeline will make up stylishly with a velvet collar and cuffs cravenette, rough serge, heather mixtures, lustre cloth, tweed and covert are recommended. Pattern 8013 is in 8 sizes from 32 to 46 inches bust measure. For the medium size, the seven-eighths coat needs 5½ yards of material 54 inches wide; for long hip coat, 3¾ yards in the same width will be required. Price, 20 cents.

linings which are faced to make deep cuffs for full-length sleeves or cut off for three-quarter length. Plain and dotted colienne are here represented,

8059—Ladies' Empire Dress—The short body of the dress pictured above, is faced to give the effect of a deep yoke, or cut out in low outline, and a standing collar is sup-

8063—LADIES' OR MISSES' CAPE, IN SEVEN-EIGHTHS OR LONG HIP LENGTH, WITH SOLID SHIRRING OR IN CLUSTERS TO DEEP YOKE DEPTH. (Described on page 888.)

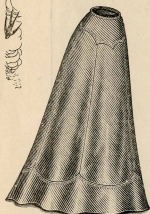
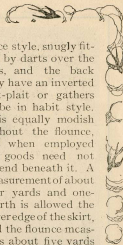


BLOUSE WAIST No. 8053 AND SKIRT No. 8011 ARE REPRESENTED IN MIST-GRAY EOLIEENNE, WITH SHIRRINGS, BEAD-TRIMMED BANDS OF SILK AND ALL-OVER LACE FOR ORNAMENTATION.

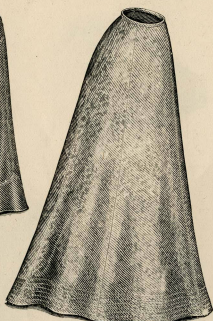
THE NEW DIRECTOIRE BASQUE WAIST, No. 8046, IS HERE SHOWN IN SPOT-BROCADED VELVET WITH WHITE SILK REVERS, AND THE SKIRT IS No. 8054 IN BLACK BROADCLOTH.

Gift of Leo Van Ntzen

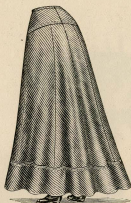
LADIES' SKIRTS



Round Length.



Round Length.



Instep Length.

piece style, snugly fitted by darts over the hips, and the back may have an inverted box-plait or gathers or be in habit style. It is equally modish without the flounce, but when employed the goods need not extend beneath it. A measurement of about four yards and one-fourth is allowed the lower edge of the skirt, and the flounce measures about five yards and one-half in the medium sizes.

Green satin foulard with folds or narrow plaitings for decoration would make a pretty skirt. Peau de cygne, crêpe de Paris, nun's-veiling, peau de crêpe, étamine, grenadine, albatross and cashmere are available.

Pattern 8062 is in 8 sizes from 20 to 34 inches waist measure. For 24 inches waist, the skirt with material cut away beneath flounce will need 5½ yards 44 inches wide, or 4½ yards 50 inches wide; without flounce, 3¾ yards 44 inches wide, or 3¾ yards 50 inches wide. Price, 20 cents.



Short Round Length.

8018—LADIES' SEVEN-GORED SKIRT, IN ROUND, SHORT ROUND OR INSTEP LENGTH, WITH AN INVERTED BOX-PLAIT OR IN HABIT STYLE AT THE BACK, WITH OR WITHOUT THE YOKE OR BAND FACINGS IN PLAIN OR FANCY OUTLINE.
(Described on page 900.)

at the foot. The back may have an inverted box-plait or be in habit style, and round, short

seven gores laid in kilt-plaits that are arranged to give the effect of a box-plait in front and meet to form an inverted plait at the back. Stitching to any yoke or flounce depth may hold them in place, and in walking they spread, giving a pretty effect. A yoke in rounding outline may be

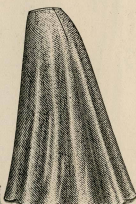
round or instep length may be given, the lower edge measuring about four yards and one-fourth in the medium sizes.

Blue serge would make a serviceable skirt, and narrow braid might be used to trim the yoke and band facings. Cloth-covered buttons in groups of two or three would be effective with the scalloped band facings.

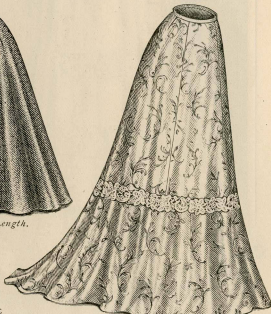
Pattern 8018 is in 9 sizes from 20 to 36 inches waist measure. For 24 inches waist, the skirt with yoke and band facings needs 6¾ yards of material 44 inches wide; without yoke and band facings, 4¾ yards in the same width. Price of pattern, 20 cents.



Long Sweep.



Round Length.



Medium Sweep.

8062—LADIES' THREE-PIECE SKIRT, IN LONG OR MEDIUM SWEEP OR ROUND LENGTH, WITH AN INVERTED BOX-PLAIT, GATHERS OR IN HABIT STYLE AT THE BACK, WITH OR WITHOUT THE CIRCULAR FLOUNCE FROM BENEATH WHICH THE SKIRT MAY BE CUT AWAY.

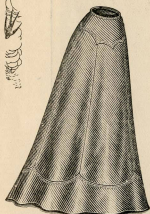
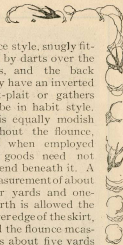
8062—Ladies' Three-Piece Skirt—
A circular flounce gives a graceful appearance to the mode here shown in figured crêpe de Chine and in dark-blue voile with appliqué band for decoration, a pepper-and-salt mixture is also given in a plainer development. The skirt is in three-

employed, and a measurement of about five yards and three-fourths is allowed the lower edge in the medium sizes with the plaits drawn out.

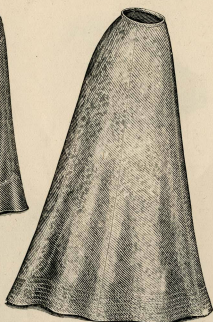
Serge, hopsacking, tweed, mixed and flecked suitings,

Gift of Leo Van Ntzen

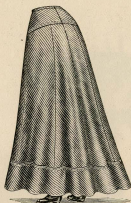
LADIES' SKIRTS



Round Length.



Round Length.



Instep Length.



Short Round Length.

8018—LADIES' SEVEN-GORED SKIRT, IN ROUND, SHORT ROUND OR INSTEP LENGTH, WITH AN INVERTED BOX-PLAIT OR IN HABIT STYLE AT THE BACK, WITH OR WITHOUT THE YOKE OR BAND FACINGS IN PLAIN OR FANCY OUTLINE.
(Described on page 900.)

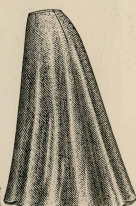
at the foot. The back may have an inverted box-plait or be in habit style, and round, short round or instep length may be given, the lower edge measuring about four yards and one-fourth in the medium sizes.

Blue serge would make a serviceable skirt, and narrow braid might be used to trim the yoke and band facings. Cloth-covered buttons in groups of two or three would be effective with the scalloped band facings.

Pattern 8018 is in 9 sizes from 20 to 36 inches waist measure. For 24 inches waist, the skirt with yoke and band facings needs $6\frac{3}{4}$ yards of material 44 inches wide; without yoke and band facings, $4\frac{3}{4}$ yards in the same width. Price of pattern, 20 cents.



Long Sweep.



Round Length.

8062—LADIES' THREE-PIECE SKIRT, IN LONG OR MEDIUM SWEEP OR ROUND LENGTH, WITH AN INVERTED BOX-PLAIT, GATHERS OR IN HABIT STYLE AT THE BACK, WITH OR WITHOUT THE CIRCULAR FLOUNCE FROM BENEATH WHICH THE SKIRT MAY BE CUT AWAY.

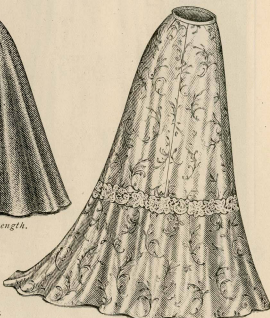
8062—Ladies' Three-Piece Skirt—
A circular flounce gives a graceful appearance to the mode here shown in figured crêpe de Chine and in dark-blue voile with appliqué band for decoration, a pepper-and-salt mixture is also given in a plainer development. The skirt is in three-

pieces style, snugly fitted by darts over the hips, and the back may have an inverted box-plait or gathers or be in habit style. It is equally modish without the flounce, but when employed the goods need not extend beneath it. A measurement of about four yards and one-fourth is allowed the lower edge of the skirt, and the flounce measures about five yards and one-half in the medium sizes.

Green satin foulard with folds or narrow plaitings for decoration would make a pretty skirt. Peau de cygne, crêpe de Paris, nun's-veiling, peau de crêpe, étamine, grenadine, albatross and cashmere are available.

Pattern 8062 is in 8 sizes from 20 to 34 inches waist measure. For 24 inches waist, the skirt with material cut away beneath flounce will need $5\frac{1}{4}$ yards 44 inches wide, or $4\frac{5}{8}$ yards 50 inches wide; without flounce, $3\frac{3}{4}$ yards 44 inches wide, or $3\frac{3}{8}$ yards 50 inches wide. Price, 20 cents.

8050—Ladies' Seven-Gored Kilt-Plaited Skirt—
The plaited skirts still retain their popularity, and an extremely smart one is portrayed on page 904 in mixed cheviot and in blue serge. It is shaped by seven gores laid in kilt-plaits that are arranged to give the effect of a box-plait in front and meet to form an inverted plait at the back. Stitching to any yoke or flounce depth may hold them in place, and in walking they spread, giving a pretty effect. A yoke in rounding outline may be



Medium Sweep.



THIS BOX-PLAITED SHIRT-WAIST, No. 8035, IS SHOWN IN A MAKE-UP OF SMOKE-GRAY LANSLOWNE WITH ENGLISH EMBROIDERY. THE SKIRT No. 8016 IS OF BLACK BARÈGE.

CAFÉ AU LAIT NUN'S-VEILING IS REPRESENTED IN THIS DEVELOPMENT OF TUCKED BLOUSE WAIST No. 8030 AND SKIRT No. 8014, ALL-OVER LACE AFFORDING DECORATION.

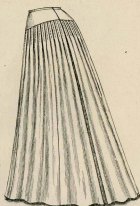
LADIES' SKIRTS



Frou-Frou Medium Sweep.



Frou-Frou Round Length.



Regulation Round Length.



Frou-Frou Long Sweep.

TO A BELT; MADE WITH OR WITHOUT THE FIVE-GORED FOUNDATION SKIRT.

8011—Ladies' Five-Gored Skirt—

A graceful mode is shown above in black point d'esprit and in gray colienne. Five gores were used in making it and frou-frou as well as regulation long or medium sweep or round length is allowed, the lower edge measuring about five yards and three-fourths in the medium sizes. Shirrings are introduced to yoke depth at the top, but these, however, may be replaced by a plain yoke, the skirt being shirred, tuck-plaited or gathered to it, or gathers may adjust it all around to a belt. A five-gored foundation skirt with an inverted box-plait at the back was employed in this instance, but its use is a matter of taste.

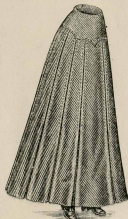
Louise, taffeta, voile, g'tamine, foulard, pongee, crêpe de Chine and all pliable fabrics are suitable.

Pattern 8011 is in 7 sizes from 20 to 32 inches waist measure. For 24 inches waist, the outside skirt will require 7 yards of material 44 inches wide; for the foundation, $7\frac{1}{2}$ yards 20 inches wide will be needed. Price, 25 cents.

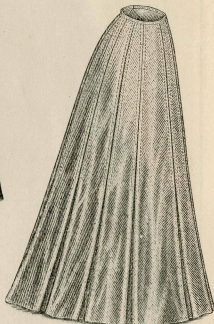
8054—Ladies' Box-Plaited Five-Gored Skirt—Although only five gores are used in the construction of this skirt, a thirteen-gored effect is given by the arrangement of the box-plaits. Stitching at the edges of the folds may be used to any yoke or flounce depth, and the pattern includes a yoke in fancy outline, the use of which is optional. The measurement at the lower edge in the medium sizes with the plaits drawn out is about five yards and one-half. Choice is given of round, short round and instep lengths, and the skirt is here pictured in mixed and plain suiting.

The flecked suitings and other mixtures are stylish, and

to the attractiveness of the skirt portrayed on page 902, but the plainly developed skirt is always favored. Brown storm



Instep Length.



Round Length.



Short Round Length.

8054—LADIES' BOX-PLAITED FIVE-GORED SKIRT, IN THIRTEEN-GORED EFFECT, AND IN ROUND, SHORT ROUND OR INSTEP LENGTH, WITH THE STITCHING TO ANY YOKE OR FLOUNCE DEPTH, WITH OR WITHOUT THE YOKE.

cheviot and fancy woollen goods were used for illustration, and machine-stitching gives a tailor finish. Seven gores afford excellent shaping, the mode being closely adjusted about the hips and flaring smartly

excellent for everyday wear with shirt-waists. English whipcord will make up prettily with a jacket of the same material, and melton, covert, serge, kersey, vicuna, zibeline, homespun, hair-line worsteds, cravenette and twine suitings are also recommended.

Pattern 8054 is in 8 sizes from 20 to 34 inches waist measure. For 24 inches waist, it calls for $6\frac{3}{4}$ yards of material 50 inches wide. Price, 20 cents.

8018—Ladies' Seven-Gored Skirt—A yoke and hand facings in plain or fancy outline add materially



A PLAITED BOLERO IS A FEATURE OF THE BLOUSE WAIST, No. 8048, HERE PICTURED WITH SKIRT NO. 8050 IN TAN CLOTH ASSOCIATED WITH WHITE SATIN, LACE AND BLACK VELVET.

AN ERMINE COLLAR AND LACE MOTIFS GIVE EFFECTIVE CONTRAST TO THIS DRESSY CAPE, No. 8063, OF GREEN VELVET; THE SKIRT, NO. 8060, IS OF BROCHÉ SILK.

LADIES' TEA-GOWNS OR WRAPPERS

Pattern 8003 is in 4 sizes from 32 to 44 inches bust measure. For 36 inches bust, the wrapper will need $7\frac{3}{4}$ yards of goods 44 inches wide; the matinée, $3\frac{3}{4}$ yards in the same width; each with $\frac{1}{2}$ yard of all-over lace for standing collar and flat collar. Price, 20 cents.



8041—Ladies' Wrapper—A front yoke adds to the becomingness of the wrapper pictured below, the material selected for this make-up being mustard-brown cashmere in association with imitation Irish point lace. A lining front assists in giving a trim appearance to the mode, and acts as a foundation for the full, gathered fronts, suspended from the yoke. The sides and backs are gored and snugly fitted to the figure. Closing is effected invisibly at the front, and the pattern allows for medium sweep or round length, with or without a straight flounce, and also for high neck with rolling collar as well as Dutch square neck. Bishop shaping characterizes the sleeves, which are fashionably full and gathered into bands, provision

8003—LADIES' TEA-GOWN OR WRAPPER IN MEDIUM SWEEP LENGTH, OR MATINÉE, WITH BOX-PLAITS STITCHED IN TUCK EFFECT, HIGH OR POINTED NECK AND FULL OR THREE-QUARTER LENGTH SLEEVES SEWED TO CONVENTIONAL OR DEEP ARM-HOLES, WITH OR WITHOUT THE FLAT COLLAR. (Described on Page 904.)



Round Length.



Round Length.



Medium Sweep.



supported when desired by two-seam linings.

Viyella, zenana, French flannel, pongee, foulard, plaid and fancy silks and washable materials are adaptable.

8041—LADIES' WRAPPER, IN MEDIUM SWEEP OR ROUND LENGTH, WITH HIGH OR DUTCH SQUARE NECK AND FULL OR SHORT THREE-QUARTER LENGTH SLEEVES, WITH OR WITHOUT THE LININGS, CUFFS OR STRAIGHT FLOUNCE.

made for full and short three-quarter lengths,

size, with flounce calls for $12\frac{1}{4}$ yards of material 36 inches wide; without flounce, $9\frac{1}{2}$ yards in the same width, with $\frac{1}{2}$ yard of all-over lace. Price, 20 cents.



PINK TAMISE CLOTH IS ILLUSTRATED IN THE MAKE-UP OF THIS GRACEFUL TEA-GOWN, No. 8003, BLACK VELVET BOWS AND FILET LACE PROVIDING DECORATION.

THIS DAINTY WRAPPER, No. 8041, IS MADE OF DOT-EMBROIDERED FRENCH FLANNEL IN AN ÉCRU SHADE, WITH DARNED NET AFFORDING EFFECTIVE ORNAMENTATION.

LADIES' DRESSING-SACKS, UNDERWEAR, ETC.

Gift of Leo Van Witsen

8069—Ladies' Tucked or Gathered Dressing-Sack, or Matinée — Dotted albatross of a pale-blue shade, and mignonette-green viyella are pictured in the illustrations of this dainty negligée. An exceptionally pretty effect is



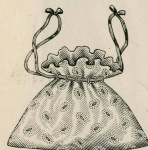
8069—LADIES' TUCKED OR GATHERED DRESSING-SACK OR MATINÉE, WITH HIGH OR POMPADOUR NECK AND FULL OR THREE-QUARTER LENGTH BISHOP OR FLOWING SLEEVES, WITH OR WITHOUT THE CAPE COLLAR OR BODY LINING.



given by the Pompadour neck, although the fronts may be extended in high-neck style, fine tucks to yoke depth or gathers disposing of the fullness. A standing collar is fur-

nished. A dart-fitted body lining may serve as a foundation, but if it is not used a belt-stay is tacked underneath to secure the fullness at the waist-line and draw the matinée in at the back. Under-arm gores are used, and the fronts hang free. A cape collar increases the attractiveness of the mode, although it is not essential to its development. Either the flowing or the bishop sleeves in full or three-quarter length are in keeping with the general design, and bands are supplied for finishing the latter. Point de Venise insertion, ribbon-run beading and repoussé lace edging are shown as decoration in the engravings.

Pekin-striped wash silk in pale colors is very pretty for dressing-sacks, and a charming matinée might be made of canary-colored crêpe de Chine, elaborately trimmed with French lace. Pongee, foulard, louisine, India silk, Ha-



8058—OPERA BAG, DRAWN IN AT THE TOP WITH RINGS AND RIBBON, AND WITH OR WITHOUT THE FITTED BOTTOM.

butai, cashmere, veiling, wool or silk batiste, dimity, lawn or Swiss will prove satisfactory.

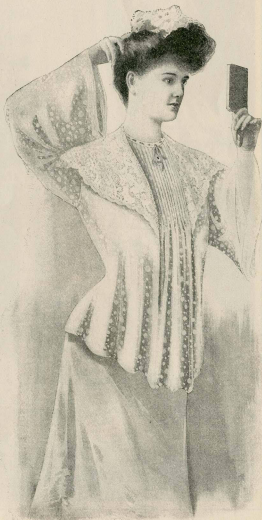
Pattern 8069 is in 8 sizes from 32 to 46 inches bust measure. For the medium size, it calls for $4\frac{1}{4}$ yards of material 27 inches wide, or $2\frac{3}{4}$ yards 44 inches wide. Price, 20 cents.

8058—Opera Bag—Many women prefer a fancy bag for carrying the opera glasses to the ordinary leather case. Black and figured silk are shown in the accompanying illustrations, and in each instance a pale silk lining is used. A piece of cardboard covered with the material may be inserted at the bottom, the bag being gathered to it, or a straight seam may be used instead. The upper edge is rounded and closing is made by ribbon run through silk-covered rings.

These bags are large enough to contain a small purse, handkerchief, veil, etc., as well as the opera glasses, and will be found convenient for carrying small articles while shopping, visiting, etc. Fabric to match the gown may be selected, or any fancy material, such as velvet or satin brocade, Dresden, Droguet or Pompadour silk, printed ribbons, and ottoman, bengaline, or faille silk, chiffon velours, satins, etc., will give satisfaction. The rings are buttonholed or crocheted with silk.

Pattern 8058 is in one size. It calls for $\frac{3}{8}$ yard of material 24 or more inches wide for outside or lining. Price, 10 cents.

8045—Ladies' or Misses' Corset-Cover—Unique designs in lingerie are eagerly sought, and, in corset-covers



PRINTED CRÉPE OLGA OF A PALE ÉCRU TINT WAS USED FOR THIS MATINÉE, No. 8069, AND BRUSSELS LACE, BEADING AND BLACK VELVET RIBBON ARE DECORATIVE DETAILS.



CHARMING SIMPLICITY CHARACTERIZES THIS MODE, No. 8316, PICTURED IN PASTEL-GRAY CHIFFON VOILE WITH RELIEFS OF EMBROIDERED AND PLAIN WHITE LANSDOWNE.

TAWNY-BROWN DRAP D'ÉTÉ IS TRIMMED WITH DYED LACE MOTIFS OVER TUCKED BROWN SILK IN THIS TOILETTE—A COMBINATION OF SHIRT-WAIST No. 8318 AND SKIRT No. 8312.

LADIES' COSTUMES AND WAISTS

8298—Ladies' Cord or Tuck Shirred Costume.—The illustrations show developments of pale-pink lawn with all-over lace and ribbon bows; black point d'esprit and white dotted Swiss with lace, and jacquard foulard. The waist closes at the back and is made over a fitted lining. Cord or tuck



Frou-Frou Long Sweep.



Frou-Frou Medium Sweep.

SLEEVES; AND A FIVE-GORED SKIRT, WITH OR WITHOUT A FIVE-GORED FLOUNCE.



Regulation Round Length.

8298—LADIES' CORD OR TUCK SHIRRED COSTUME, IN FROU-FROU OR REGULATION LONG OR MEDIUM SWEEP OR ROUND LENGTH; CONSISTING OF A BLOUSE, WAIST, CLOSED AT THE BACK, WITH GATHERS TO A HIGH NECK OR WITH A SHALLOW YOKE, OR IN MEDIUM OR LOW ROUND NECK, AND WITH FULL-LENGTH OR SHORTER

the fronts; they are allowed to lap in cross-strap style, or the underlapping tab may be omitted for surplice effect. Tucks are taken up to yokedepth, producing becoming fullness below, the back being bloused or only slightly eased over the crush girdle-belt. A strap follows the upper outline of the waist proper, and a chemisette is worn, the standing collar of which is omitted if a round neck is fancied. The sleeves are made of double or single puffs with plats at the top, in full

shirring are used, and provision is made for high neck with a shallow yoke or with gathers regulating the fullness, a medium or low round neck being also allowed. A crush girdle finishes the waist.

or three-quarter length. Linings are provided for the mode, and provision is made for the ornamentation.

Messaline, eflure (a new cotton fabric), pongee, eolienne, chiffon taffeta and similar materials are adaptable.

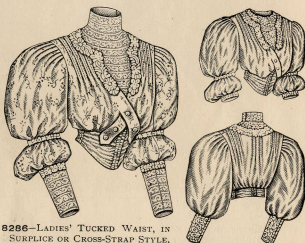
Pattern 8286 is in 7 sizes from 32 to 44 inches bust measure. For the medium size, it calls for 2 $\frac{3}{4}$ yards of material 44 inches wide, with 1 yard of all-over lace. The quantity of insertion is not given as it varies according to the width of insertion selected. Price, 20 cents.

Choice is given of full or shorter length bishop sleeves made over two-seam linings, and those in flaring style with ruffles, provisions also being made for shirring at the top.

Five gore are employed in the construction of the skirt. Shirrings are arranged in yoke effect, dipping becomingly at the front. A shirred flounce, also cut in five-gored style, is a pretty feature. A lower edge measurement of about five yards is given the skirt in the medium sizes, and about six yards and three-quarters the flounce.

Plaid pineapple gauze will be very dainty made in this way, and will require no trimming but a ribbon sash.

Pattern 8298 is in 6 sizes from 32 to 42 inches bust measure. For the medium size, it needs 14 $\frac{1}{2}$ yards of material 36 inches wide, or 12 $\frac{1}{4}$ yards 44 inches wide, each with $\frac{7}{8}$ yard of all-over lace. Price, 25 cents.



8286—LADIES' TUCKED WAIST, IN SURPLICE OR CROSS-STRAP STYLE, BLOUSED OR EASED AT THE BACK, WITH CHEMISSETTE IN HIGH OR DUTCH ROUND NECK AND FULL OR THREE-QUARTER LENGTH SLEEVES WITH DOUBLE OR SINGLE PUFFS. (SOMETIMES CALLED THE SHEPHERDESS WAIST.)

8286—Ladies' Tucked Waist.—An attractive waist, especially adapted to development in soft fabrics, is here shown in a make-up of white chiffon cloth and also in figured crêpe de Chine, lace lending a note of relief. A novel appearance is given by the introduction of tab extensions on



SEE DESCRIPTION ON OPPOSITE PAGE

9026 LADIES' SHIRT WAIST PRICE 15¢
8920 LADIES' SKIRT PRICE 15¢

9040 LADIES' WAIST PRICE 15¢
9034 LADIES' SKIRT PRICE 15¢

SUMMER COSTUMES of PONGEE and ORGANDIE
ISSUED ONLY BY

The McCall Co.,

113-115-117 WEST 31ST ST., NEW YORK CITY.



Ladies' Surplice Waist, 9064—Skirt, 8996

Ladies' Box Eton Jacket, 9066—Skirt, 8865

McCALL PATTERNS (All Seams Allowed)

Smart Toilettes for Summer Wear

See Descriptions on Opposite Page

COSTUME INSTITUTE LIBRARY
METROPOLITAN MUSEUM OF ART



Supplément au N°
du 1^{er} Juin 1905

Reproduction interdite

Imp. Falconer-Paris

N° 5357

JOURNAL DES DEMOISELLES

Modes de Paris

14, Rue Drouot

Coiffures de M^{me} FORCILLON SEIGNE, 163, Rue S^t Honoré, Place du Châteauneuf Français
 Tissus de la M^{me} KOULLIER FRÈRES, 27, Rue du 4 ^{Septembre}
 Parfumerie HOUBIGANT, 19, Faub. S^t Honoré



Supplément au N°
du 1^{er} Décembre 1905.

Reproduction interdite

Imp. Falconnier Paris

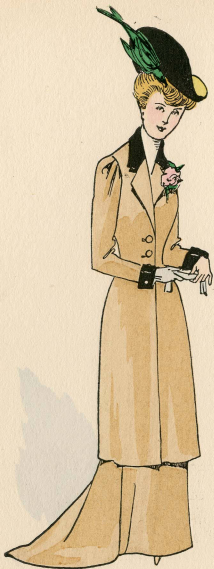
N° 5369

JOURNAL DES DEMOISELLES

Modes de Paris

52, Rue St Georges.

Coiffures de M^{me} FORCILLON SOLONS, 106^{is} Rue S^t Honoré, Place du Théâtre Français
 Tissus de la M^{me} ROULLIER FRÈRES, 27, Rue du 4 Septembre
 Parfumerie HOUBIGANT, 19, Faub^{ourg} S^t Honoré



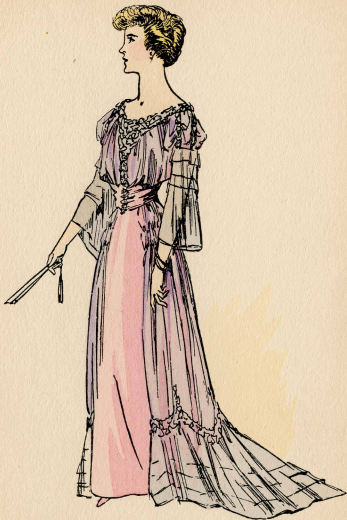
1905



1905



1905



1905



Supplément au N°
du 1^{er} Octobre 1906

Imp. Falconer, Paris.

N° 5389

Reproduction interdite

JOURNAL DES DEMOISELLES

Modes de Paris

52, Rue S^t Georges.

Coiffures de M^{mes}
FORCILLON SOUSSES 165, Rue S^t Honoré, Place du Théâtre Français
Parfumerie HOUBIGANT 19, Faub^{ourg} S^t Honoré



Supplément au N°
du 15 Janvier 1907

Imp. Falconer, Paris.

N° 5396

Reproduction interdite

JOURNAL DES DEMOISELLES

Modes de Paris

52, Rue S^t Georges.

Parfumerie HOUBIGANT 19, Faub^lg. S^t Honoré



Supplément au N°
du 15 Avril 1907

Imp. Falconer, Paris.

N° 5402

Reproduction interdite

JOURNAL DES DEMOISELLES

Modes de Paris

52, Rue St-Georges.

Coiffes de M^{mes} FORCILLON SOEURS 163, Rue S^t-Honoré, Place du Théâtre Français.
Parfumerie HOUBIGANT 19, Faub^{ourg} S^t-Honoré



Supplément au N°
du 15 Août 1907

Imp. Falconer, Paris.

N° 5410

Reproduction interdite

JOURNAL DES DEMOISELLES

Modes de Paris

52, Rue S^t Georges.

Coiffes des Modes
 FORCILLON SOEURS 165, Rue S^t Honoré, Place du Théâtre Français
 Parfumerie HOUBIGANT 19, Faub^g S^t Honoré



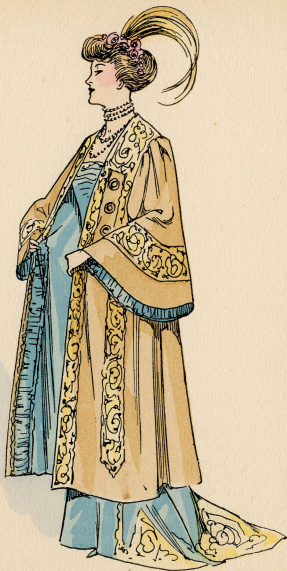
1907



1907



1907



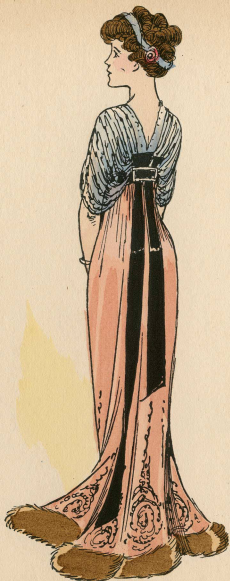
1907



1908



1908



1908



1908



Supplément au N°
du 1^{er} Mars 1908

Reproduction interdite

Imp. Falconer, Paris.

N° 5423

JOURNAL DES DEMOISELLES

Modes de Paris

52, Rue S^t Georges.

Coiffures de M^{me} FORCILLON SOUSSES, 165, Rue S^t Honoré, Place du Théâtre Français
Parfumerie HOUBIGANT, 19, Faub^{ourg} S^t Honoré



Supplément au N°
du 1^{er} Août 1908

Imp. Falconer, Paris.

N° 5433

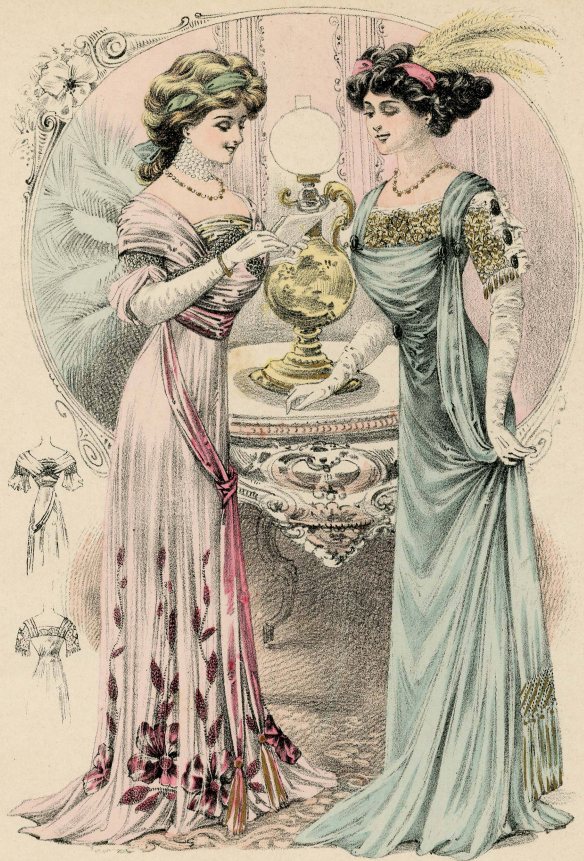
Reproduction interdite

Modes de Paris

JOURNAL DES DEMOISELLES

52, Rue St-Georges.

Coiffures de M^{me} MARIE LOUISE CHEVÉ, 148, Avenue Clichy, 17.
Parfumerie HOUBIGANT, 13, Faub. St-Honoré.



Supplément au N°
du 1^{er} Décembre 1908

Imp. Falconer, Paris.

N° 5441

Reproduction interdite

JOURNAL DES DEMOISELLES

Modes de Paris

52, Rue S^t Georges.

Coiffures de M^{mes} FORCILLON Sœurs 165, Rue S^t Honoré, Place du Théâtre Français
Parfumerie HOUBIGANT 10, Faub^{ourg} S^t Honoré



Supplément au N°
du 1^{er} Août 1909

Reproduction interdite

Imp. Falconer, Paris.

N° 5457

JOURNAL DES DEMOISELLES

Modes de Paris

52, Rue S^t Georges.

Coiffures de M^{mes} FORCILLON SOUS 165, Rue S^t Honoré, Place du Théâtre Français
Parfumerie HOUBIGANT 19, Faub^{ourg} S^t Honoré



1909



1909



1909



1909



1910



1910



1910



1910

Ff
795.04
M72
v.3
1910-1915
Series III

PROPERTY OF
THE RHODE ISLAND
SCHOOL OF DESIGN LIBRARY

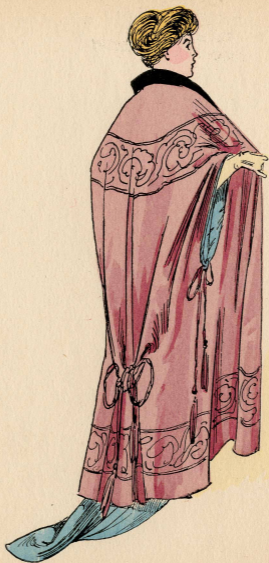


La
Mode
féminine
de 1910 à 1915
20 Planches
en
couleurs

Ff 795.04 M72 v.3



1911



1911



1911



1911



1912



1912



1912



1912



Veste de velours pékiné noir et auburn sur fourreau de
frissonnette peinte. Chapeau velours et aigrette



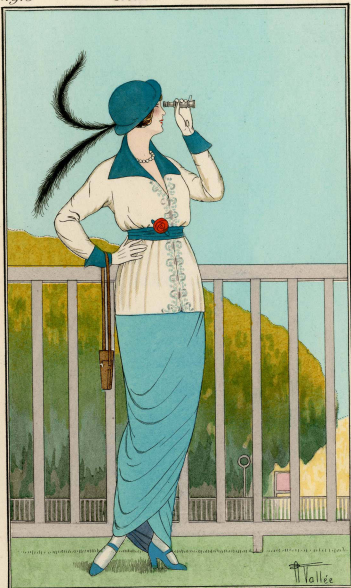
Manteau du soir en velours amarante brodé d'argent



Deshabillé de mousseline de soie glycine drapé et bordé de fourrure.
— Petite casaque de velours noir frappé —.



*Tailleur de Velours blanc frappé
garni de Loutre et de Passementerie*

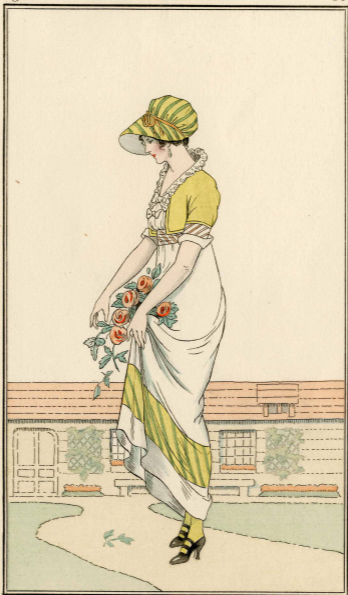


Blouse de satin blanc brodée. Jupe drapée de cachemire de soie.



Robes de jeunes filles: l'une en crêpon blanc et tuffetas orange; l'autre en drap blanc brodé.

*Robe d'Intérieur*



Robe de crépon blanc - Casaque de taffetas soufre -
Bonnet de taffetas pékiné.



Robe de satin bleu recouverte d'une tunique de tulle blanc.
sur laquelle se drape un brocart de Chine noir et blanc.



*Robe de crépon blanc à pois jaune. — Robe de fillette
en écossais cerise et vert.*



Coquette de garden-party



Robe de taffetas à fleurs et ottoman de soie... Chapeau de tulle



*Robe de velours ancien garnie d'opossum. Robe de
fillette en velours chiffon bordée de cygne.*

G. BARBIER 1913



*Blouse japonaise en soie sur une jupe plissée.
Mante de toile blanche*



Louis Comte

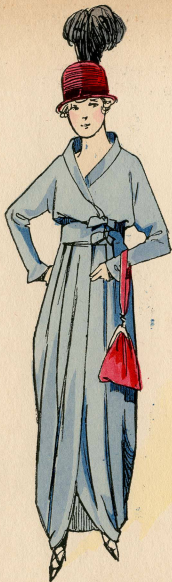
1913



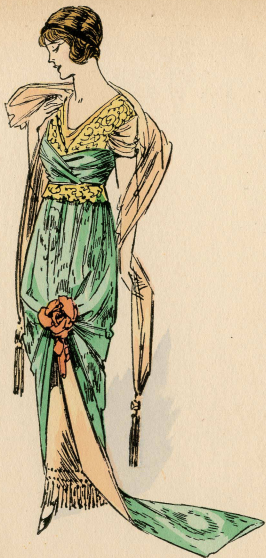
Cailleur de duvetyn ibis



1913



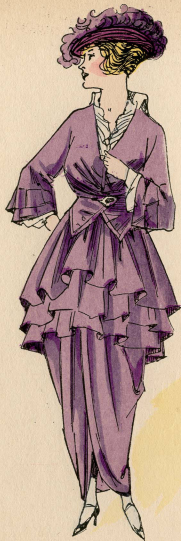
1913



1913



1913



1914



1914



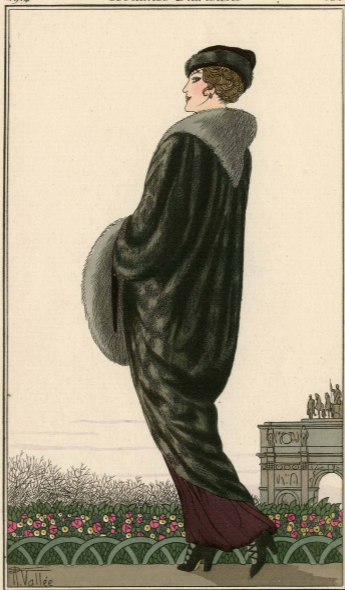
1914



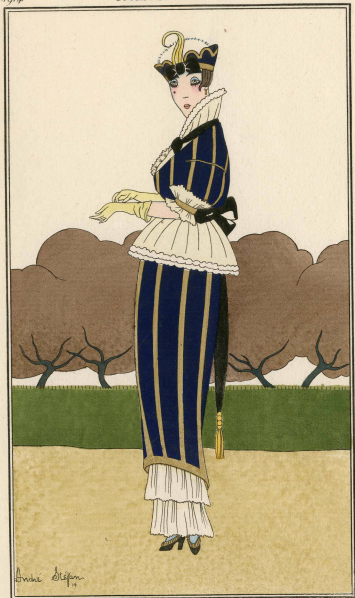
1914



Robe à volants - Parure d'hermine



Manteau de taupe - pareure de renard gris



Robe de satin pékiné à volants de nansouk



Manteau du soir en velours frappé garni de soie brochée d'argent



*Manteau d'après-midi en duvetin citron,
avec une boucle de moiré*



Robe de Garden Party en mousseline
blanche et liberty orange



Copyright © 1914

Pagode



W Robert Darnay 14

Copyright 1914
Robe de bal en taffetas corail à volants de gaze de soie.



Blouse de ratine à ceinture brodée



Copyright © 1914

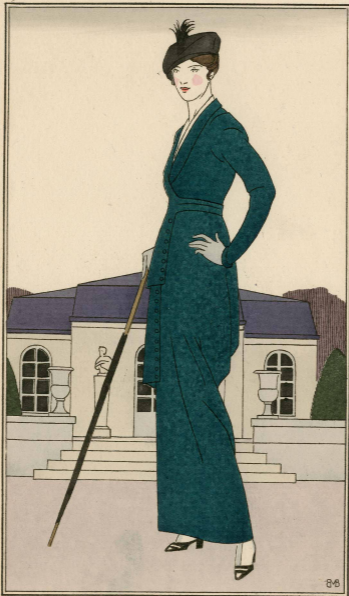
Manteau de velours broché - Cheveux poudrés d'or



G. BARBIER 1914

Cop. J. A. M. 5-100

Petit manteau de velours, robe de linon



Copyright 1914

Petit tailleur du matin



Cop. p. N. B. et C. n. 1914

Arlequine



*Caillour de petit drap canari garni de boutons
d'ambre clair*

Cop. J. L. B. et C^{ie} 1914*Robe pour les vacances de Pâques*



J. van Brack.

Copyright © 1914

Robe de serge bleue à volant écossais.

*Coquette d'après-midi*



Un Incroyable et une Cantinière