

SAMPLE BOOK
of
Men's, Women's and Children's
UNDERWEAR
and showing of Cold Weather Wearing Apparel
FALL and WINTER
1915



Our Guarantee
FOR nearly fifty years we have guaranteed real satisfaction by Good Merchandise, Low Prices, Prompt Service and Fair Dealing. Save money by ordering from this book. We will refund your money or exchange any unsatisfactory purchase.

MONTGOMERY WARD & Co.
Chicago Avenue Bridge, Chicago
NEW YORK, CHICAGO, KANSAS CITY, FORT WORTH, PORTLAND





Heavy Weight Ribbed Fleece Lined

Extra Heavy, Winter Weight, Fine Cotton Underwear for Women. Fleece lined. High neck. Long sleeves. Ankle length. Particularly recommended for women who do not like wool underwear, but must have warmth. Fine Jersey Ribbed. Color, White. Be sure to state size wanted.



Women's Regular Size Vests and Drawers

29L2016—Vest \$0.43
 29L2017—Drawers 43
 Three Vests or Drawers 1.22

Sizes, 34, 36 or 38 inch.
 Weight, per garment, 11 ounces for size 38.

Women's Extra Size Vests and Drawers

29L2024—Vests \$0.48
 29L2025—Drawers 48
 Three Vests or Drawers 1.37

Size, 40, 42 or 44 inch.
 Weight, per garment, 12 ounces for size 44.

Women's Regular Size Union Suits

29L2145—Union Suits . . . \$0.79
 Three Suits for 2.25

Sizes, 34, 36 or 38 inch bust.
 Weight, per suit, 16 ounces for size 38.

Women's Extra Size Union Suits

29L2149—Union Suits . . \$0.89
 Three Suits for 2.54

Sizes, 40, 42 or 44 inch bust.
 Weight, per suit, 21 ounces for size 44.

Girls' Union Suits

29L2414—Union Suits . . \$0.45
 Three Suits for 1.28
 Ages, 2, 4, 6, 8 or 10 years.
 Average weight, per suit, 10 ounces. State age wanted.

29L2415—Union Suits . . \$0.55
 Three Suits for 1.57
 Ages, 12, 14 or 16 years.



Heavy Weight Gray or Cream

An exceptional value in Heavy Weight Elastic Ribbed Knit Wool and Cotton Underwear for Women. Contains about fifty-seven per cent extra fine wool. Balance of combed cotton, which adds to its wearing qualities and prevents shrinking when washed. High neck. Long sleeves. Ankle length. Be sure to state size wanted.

Women's Regular Size Vests and Drawers

Color, Natural Gray. 29L2042—Vests \$1.40
 Color, Cream. 29L2046—Vests \$1.40
 29L2043—Drawers 1.40
 29L2047—Drawers 1.40
 Three Vests or Drawers 4.00
 Three Vests or Drawers 4.00
 Sizes, 34, 36 or 38 inch. Weight, per garment, 10 ounces for size 38.

Women's Regular Size Union Suits

Color, Natural Gray. 29L2200—Union Suits . . \$2.43
 Color, Cream. 29L2212—Union Suits . . \$2.43
 Three Suits for 6.95
 Three Suits for 6.95
 Sizes, 34, 36 or 38 inch bust. Weight, per suit, 15 ounces for size 38.

Women's Extra Size Union Suits

Color, Natural Gray. 29L2204—Union Suits . . \$2.98
 Color, Cream. 29L2216—Union Suits . . \$2.98
 Three Suits for 8.50
 Three Suits for 8.50
 Sizes, 40 to 48 inch bust. Weight, per suit, 18 ounces for size 44.

Girls' Union Suits

Natural Gray. 29L2428—Drop Seat. Ages, 2 to 16 years. 4 years \$1.00
 6 years 1.15
 8 years 1.30
 10 years 1.45
 12 years 1.60
 14 years 1.75
 16 years 1.90
 Cream White. 29L2430—Drop Seat. Ages, 2 to 16 years. 4 years \$1.00
 6 years 1.15
 8 years 1.30
 10 years 1.45
 12 years 1.60
 14 years 1.75
 16 years 1.90
 Weight, per suit, 11 ounces for age 12. State age wanted.



Extra Quality Fine Ribbed

Our Leading Values in Heavy Weight Elastic Ribbed Knit Underwear for Women. Knit in fine stitch from about twenty per cent fine wool, balance combed cotton. High neck. Long sleeves. Ankle length. Color, Cream only. Be sure to state size wanted.

Women's Regular Size Vests and Drawers

29L2058—Vests \$0.99
 29L2059—Drawers99
 Three Vests or Drawers 2.82

Sizes, 34, 36 or 38 inch bust.
 Weight, each, 10 ounces for size 38.

Women's Extra Size Vests and Drawers

29L2070—Vests \$1.08
 29L2071—Drawers 1.08
 Three Vests or Drawers 3.08

Sizes, 40 to 48 inch bust.
 Weight, each, 12 ounces for size 44.

Women's Regular Size Union Suits

29L2192—Union Suits . . \$1.65
 Three Suits for 4.75

Sizes, 34, 36 or 38 inch bust.
 Weight, per suit, 17 ounces.

Women's Extra Size Union Suits

29L2196—Union Suits . . \$2.00
 Three Suits for 5.70

Sizes, 40 to 48 inch bust.
 Weight, per suit, 21 ounces for size 44.

Women's Regular Size Nursing Suits

29L2266—Nursing Suits . \$1.79
 Three Suits for 5.10

Sizes, 34, 36 or 38 inch bust.
 Weight, per suit, 14 ounces for size 38.

Girls' Vests and Drawers

29L2368—Vests Each
 29L2369—Drawers Each
 Age Each
 2 years 35c
 4 years 42c
 6 years 49c
 8 years 56c

Age Each
 10 years 93c
 12 years 70c
 14 years 77c
 16 years 84c
 Weight, per garment, 9 ounces. State age wanted.



Fine Ribbed Wool and Cotton

Medium weight, Jersey Ribbed Underwear. Special value. About 20 per cent wool, balance combed cotton. High neck. Long sleeves. Ankle length. A great deal of care has been taken in the detail and workmanship of these garments. This underwear is heavy enough for Winter wear in the average climates. Very elastic and close fitting. Color, natural gray. Be sure to state size wanted.

Women's Regular Size Vests and Drawers

29L2038—Vests \$0.99
29L2039—Drawers99
Three Vests or Drawers 2.82
Sizes, 34, 36 and 38 inches.
Weight, per garment, 10 ounces for size 38.

Women's Extra Size Vests and Drawers

29L2066—Vests \$1.08
29L2067—Drawers 1.08
Three Vests or Drawers 3.08
Sizes, 40 to 48 inches.
Weight, per garment, 12 ounces for size 44.

Women's Regular Size Union Suits

29L2184—Union Suits \$1.65
Three Suits for 4.75
Sizes, 34, 36 and 38 inches bust.
Weight, per suit, for size 38, 11 ounces.

Women's Extra Size Union Suits

29L2188—Union Suits \$2.00
Three Suits for 5.70
Sizes, 40 to 48 inches bust.
Average weight, 21 ounces for size 44.

Women's Drop Seat Union Suits

29L2232—Union Suits \$1.89
Three Suits for 5.40
Sizes, 34, 36 and 38 inches bust.
Weight, per suit, 16 ounces for size 38.

Girls' Vests and Drawers

29L2364—Vests, Each
29L2365—Drawers, Each
Ages Each Ages Each
2 years 35c 10 years 63c
4 years 42c 12 years 70c
6 years 49c 14 years 77c
8 years 56c 16 years 84c
Weight, per suit, 9 ounces for age 12.
State age wanted.

Girls' Union Suits

29L2424—Union Suit, Drop Seat.
Ages Each Ages Each
2 years \$0.80 10 years \$1.20
4 years90 12 years 1.30
6 years 1.00 14 years 1.40
8 years 1.10 16 years 1.50
Weight, per suit, 13 ounces for age 12.
State age wanted.

Boys' and Youths' Union Suits

29L332—Boys' Union Suit, \$1.00
Three Suits for 2.85
Sizes, 8 to 14 years.
29L333—Youths' Union Suits, \$1.49
Three Suits for 4.25
Sizes, 16 or 18 years.
Weight, per garment, 15 ounces for age 14.
State age wanted.

Heavy Weight Cotton



A Special Value in Fine Cotton Union Suit for Women, knit from good quality cotton, slightly fleeced on the inside. Fine Jersey ribbed. High neck. Long sleeves. Ankle length.

Women's Regular Size Union Suits

29L2152—Union Suits \$1.00
Three Suits for 2.85
Color, Cream White.
Sizes, 34, 36 or 38 inches bust.
Weight, per suit, 18 ounces for size 38.

Women's Extra Size Union Suits

29L2156—Union Suits \$1.09
Three Suits for 3.10
Color, White.
Sizes, 40, 44 or 48 inches bust.
Weight, per suit, 23 ounces for size 44.

Women's Nursing Union Suits

29L2170—Union Suits \$1.00
Three Suits for 2.85
Color, White.
Sizes, 34, 36 or 38 inches bust.
Weight, per suit, 19 ounces for size 38.

Girls' Union Suits

Ages 9, 10, 11 and 12 years.
29L2418—Union Suits \$0.50
Three Suits for 1.43
Ages, 14 or 16 years.
29L2419—Union Suits \$0.63
Three Suits for 1.80
Color, Cream.
Weight, per suit, 13 ounces for age 12. State age wanted.

Ribbed Fleece Lined



The Heaviest Fleece Lined Cotton Underwear Made for Women. Just the garments for women who do not like wool underwear but must have warmth. Very fine Jersey ribbed. Color, cream. State size wanted.

Women's Regular Size Vests and Drawers

29L2014—Vests \$0.43
29L2015—Drawers43
Three Vests or Drawers 1.22
Sizes, 34, 36 or 38 inches.

Women's Extra Size Vests and Drawers

29L2026—Vests \$0.48
29L2027—Drawers48
Three of either Vests or Drawers 1.37
Weight, per garment, 12 ounces for size 44.

Women's Regular Size Union Suits

29L2144—Union Suits \$0.79
Three Suits for 2.25
Sizes, 34, 36 or 38 inches bust.
Weight, per suit, 16 ounces for size 38.

Women's Extra Size Union Suits

29L2148—Union Suits \$0.89
Three Suits for 2.54
Weight, per suit, 21 ounces for size 44.

Girls' and Misses' Vests and Drawers

29L2356—Vests, Each
29L2357—Drawers, Each
Ages Each Ages Each
2 years 21c 10 years 33c
4 years 24c 12 years 36c
6 years 27c 14 years 39c
8 years 30c 16 years 42c
Weight, per garment, 8 ounces for age 12.

Girls' and Misses' Union Suits

29L2412—Union Suit \$0.45
Three Suits for 1.28
Ages, 2, 4, 6, 8 or 10 years.
Average weight, per suit, 14 ounces for age 12.
State age wanted.

Winter Weight Wool and Cotton

Heavy Union Suits for Women. Made of about 20 per cent Wool and balance Fine Cotton. Ribbed knit in tuck stitch.

Women's Regular Size Union Suits

29L2172—Silver Gray \$1.00
29L2176—Cream 1.00
Three Suits of either color. 2.85
High neck, Long sleeves, Ankle length.

Sizes, 34, 36 or 38 inches bust.
Weight, per suit, 15 ounces for size 38.

Women's Extra Size Union Suits

29L2202—Cream White \$1.19
Three Suits for 3.40
Dutch neck, Elbow sleeves.
Ankle length.

Sizes, 34, 36 or 38 inches bust.
Weight, per suit, 12 ounces for size 38.

Women's Extra Size Union Suits

29L2198—Cream \$1.33
Three Suits for 3.80
High neck, Long sleeves, Ankle length.
Sizes, 40, 42 or 44 inches bust.
Weight, per suit, 19 ounces for size 44.

State Size Wanted



The right suit of Underwear, at the right price, in this book



Heavy Weight Plain Knit



Extra Heavy All Wool

Fine Cotton Heavy Weight

Per Garment 43c

Good quality. Fine ribbed Cotton Underwear. Slightly fleeced on inside. Made of the best combed Egyptian cotton. High neck. Long sleeves. Ankle length. Color, Cream.

Women's Regular Size Vests and Drawers

29L2004—Vests . . . \$0.43
29L2005—Drawers . . . 43
Three Vests or Drawers. 1.22
Sizes, 34, 36 or 38 inches.
Weight, per garment, 11 ounces for size 38.

Women's Extra Size Vests and Drawers

29L2022—Vests . . . \$0.47
29L2023—Drawers . . . 47
Three Vests or Drawers. 1.34
Sizes, 40, 42 or 44 inches.
Weight, per garment, 12 ounces for size 44.

Women's Union Suits

29L2132—Union Suits . . . \$0.79
Three Suits for . . . 2.25
Sizes, 34, 36 or 38 inches.
Weight per suit, 16 oz. for size 38.

Misses' Vests and Drawers

29L2352—Vests.
29L2353—Drawers.
Age . . . Each
2 years . . . \$0.18
4 years . . . 24
6 years . . . 27
8 years . . . 30
10 years . . . 33
12 years . . . 36
14 years . . . 39
16 years . . . 39
State age wanted.
Average weight, 6 ounces for age 12.

Misses' Union Suits—Drop Seat

29L2404—Union Suits.
Ages, 2, 4, 6, 8 or 10.
 . . . \$0.45
Ages, 12, 14 or 16 years . . . 49
Weight per suit, 11 ounces for age 12.
State age wanted.



State size wanted

Heavy Weight Cotton

Heavy Weight. Elastic Fine Ribbed Underwear for Women and Girls. Has a slight fleecing inside, which makes it a very comfortable garment to wear. Knit from the best combed Egyptian cotton. Color, White only. State size wanted.

Women's Regular Size Vests and Drawers

Weight, per garment, 11 ounces for size 38
29L2010—Vests . . . \$0.43
29L2011—Drawers . . . 43
Three Vests or Drawers . . . 1.22
High neck. Long sleeves. Ankle length.
Sizes, 34, 36 or 38 inches.
29L2012—Vests . . . \$0.43
29L2013—Drawers . . . 43
Three Vests or Drawers . . . 1.22
Dutch neck. Half sleeves. Ankle length.
Sizes, 34, 36 or 38 inches.

Women's Regular Size Union Suits

Weight, per suit, 16 ounces for size 38
29L2136—Union Suits . . . \$0.79
Three Suits for . . . 2.25
High neck. Long sleeves. Ankle length.
Sizes, 34, 36 or 38 inch bust.

29L2139—Union Suits . . . \$0.79
Three Suits for . . . 2.25
Low neck. No sleeves. Ankle length.
Sizes, 34, 36 or 38 inch bust.
29L2142—Union Suits . . . \$0.79
Three Suits for . . . 2.25
Dutch neck. Elbow sleeves. Ankle length.
Sizes, 34, 36 or 38 inch bust.

Women's Special Drop Seat Union Suits

29L2224—Union Suits . . . \$0.83
Three Suits for . . . 2.37
Sizes, 34, 36 or 38 inch bust.
Weight, per suit, 16 ounces for size 38

Girls' Union Suits

29L2408—Drop seat.
Ages, 2, 4, 6, 8 or 10 years.
Price, each . . . 45c
Ages 12, 14 or 16 years . . . 49c
Price, each . . . 49c
29L2409—Open seat.
Ages 14 or 16 years . . . 49c
Price, each . . . 49c
Average weight, 11 ounces for age 12.
State age wanted.

Women's Vests and Drawers

29L2100—Vests . . . \$0.78
29L2101—Drawers . . . 78
Three Vests or Drawers . . . 2.22
Sizes, 32 to 44 inches.
Weight, each, 11 ounces for size 38.
State size wanted.

Girls' Vests and Drawers

29L2380—Vests.
29L2381—Drawers.
Age . . . Each
2 years . . . 43c
4 years . . . 48c
6 years . . . 53c
8 years . . . 58c
10 years . . . 63c
12 years . . . 68c
14 years . . . 73c
16 years . . . 78c
Average weight, per garment, 8 ounces.
State age wanted.

Boys' Shirts and Drawers

29L304—Shirts . . . \$0.63
29L305—Drawers . . . 63
Three Shirts or Drawers . . . 1.80
Ages, 6 to 16 years.
Weight
Shirts, 8 ounces for age 10.
Drawers, 7 ounces for age 10.
State age wanted.

Heavy Weight. 188in Knit Underwear for Women, Girls or Boys. Contains twenty-five per cent fine wool, balance combed cotton. Color, Natural Gray.

Our heaviest, weight, all wool underwear for women. Fine ribbed knit. High neck. Long sleeves. Ankle length.

Women's Regular Size Vests and Drawers

29L2050—Vests . . . \$1.73
29L2051—Drawers . . . 1.73
Three of either Vests or Drawers . . . 4.94
Color, Natural Gray.
29L2054—Vests . . . \$1.73
29L2055—Drawers . . . 1.73
Three of either Vests or Drawers . . . 4.94
Color, Cream.
Sizes, 34, 36 or 38 inches.
Weight, each, 17 ounces for size 38.

Extra Size

29L2056—Vests . . . \$1.84
29L2057—Drawers . . . 1.84
Three Vests or Drawers . . . 5.25
Color, Cream.
Sizes, 40, 42 or 44 inches.
Weight, each, 19 ounces for size 44.

Women's Regular Size Union Suits

29L2244—Natural Gray . . . \$2.49
29L2248—Cream White . . . 2.49
Three Suits of either color . . . 7.10
Sizes, 34, 36 or 38 inch bust.
Weight, per suit, 22 ounces for size 38.
Extra Size
29L2250—Union Suits . . . \$2.69
Three Suits for . . . 7.67
Color, Cream.
Sizes, 40, 42 or 44 inches.
Weight, per suit, 26 ounces for size 44.

Six Best Selling Numbers from Our Flannel Shirt Department



State Size
Wanted

Two Special Gray Flannel Shirts

Each **\$1.98**
Three Shirts
Either Style
for \$5.65

31L743—Negligee collar. Club tie. Two pockets. Sizes, 14½ to 18 inches.

31L745—Pointed high band attached collar. Made in coat style. One pocket. Sizes, 14 to 17½ inches. Weight, 15 ounces.

Heavy weight. Light Gray Flannel Shirt for men. Contains about three fourths wool, balance fine cotton. Very warm and serviceable. Double stitched throughout. Ivory buttons to match color of shirt.

Heavy Weight Gray Flannel

Each **\$1.00**
31L723
Three Shirts
for \$2.85

Color, plain gray only. Sizes, 14½ to 18 inches. Average weight, each, 15 ounces. State size wanted.

Men's shirt made of fine flannel, contains about 20 per cent wool, balance fine cotton. Has negligee collar. Faced sleeves with button on facing. Box center plait. One pocket.

Would sell at retail for at least \$1.50 each.

Two Cadet Blue Flannel Shirts

Each **\$1.59**
31L780
Sizes, 14 to 18 inches. Weight, 21 ounces.

Each **\$1.49**
31L747
Sizes, 14½ to 17½ inches. Weight, 21 ounces.

Men's Shirts made of heavy flannel, in cadet blue color. Contains over two-thirds wool. Balance fine cotton. Very warm and serviceable. Made especially for us. No. 31L747 has negligee collar, and two pockets. No. 31L780 has high band attached collar, one pocket and is made in coat style.

Heavy Weight Broadcloth

Each **\$1.69**
31L765
Three Shirts
for \$4.82

Colors: Navy, Gray or Government Tan. Sizes, to fit neck measure, 14 to 18 inches. Weight, each, 16 ounces.

Made of heavy broadcloth. Contains over two-thirds fine wool. Coat front. High band, attached collar with pearl links. Faced sleeves with button on facing. Plain cuffs. One pocket. Pearl buttons. A \$2.00 retail value.

Special Bellows Pocket Shirt

Each **\$1.43**
31L749
Three Shirts
for \$4.08

Colors: Tan, Navy Blue or Gray. Sizes, to fit neck measure, 14½ to 17½ inches. Average weight, each, 15 ounces. State size and color wanted.

Made of Algerian Broadcloth, 70 per cent wool. Pointed high band, attached collar. Ivory links. Two bellows pockets, with button-down flaps. Faced sleeves with button on facing. Ivory buttons throughout to match shirts in color. Usually sells for \$2.00 at retail.

Heavy Weight Blue Flannel

Each **\$1.00**
31L806
Three Shirts
for \$2.85

Color, Navy Blue only. Sizes, 14½ to 17½ inches. Average weight, each, 23 ounces. State size wanted.

Men's Heavy weight Navy Blue Flannel Shirt. Contains over one-third wool and balance fine cotton. Has attached negligee collar. Faced sleeves with button on facing. Plain cuffs. Box center plait. One pocket. Pearl buttons. A \$1.50 retail value.

Pay less and dress better. Shop through Our Big Catalogue

MONTGOMERY WARD & CO.
CHICAGO



\$10⁹⁵

**Nobby
Gray or
Blue
Chinchilla**

39L11610—Gray.

39L11630—Blue.

Sizes: 35 to 44 inches, chest.

Average length, about 50 inches.

A smart, up-to-date style that is much in favor this season. Note the snappy lines of the model as shown in the illustration, and how well this garment appears when being worn. It gives you that well dressed, prosperous appearance that is an asset to every man. The workmanship is first class in every detail. Material is a Chinchilla overcoating, about 95 per cent wool. Your choice of gray or blue color. A very warm and serviceable fabric, that tailors

well and is dressy for any occasion. Illustration shows the nobby style of this garment. A full cut double breasted model. Large shawl collar, which can be turned up close around the neck if desired. Two outside patch pockets with flaps. Durable twill lining throughout.

For the man who wants a good serviceable winter coat, at a reasonable price, this one offers an excellent investment.

Average weight, about 6 pounds.

Send for a Copy
of Our New

Men's,
Young
Men's
and
Youths'

Ready-to-Wear Clothing Book



Now Ready

Sent on Request

Our Ready-to-Wear Book of Men's, Young Men's and Youths' Clothing is ready and awaiting your request. It contains a finer collection of style illustrations than we have ever shown before. All the new, snappy models as well as the many conservative styles are shown. The sample swatches cover a wide range of fabrics and textures from the fancy mixtures to the plain weaves. The most critical man will find many patterns to meet his approval.

Many special features have been added to our garments and at no extra expense to you. One of these features is the E-Z-NEK Fold attachment that we are putting in some of our overcoats. You will find this a very handy feature, as it can be adjusted in a moment's notice when needed, or folded out of sight, when not in use. An excellent protection for the throat and chest, to ward off the winter winds and cold.

The young men and youths will find that they have been well taken care of in the number of models and cloths that are displayed for their selection. The soft roll front coats are very popular, as are the athletic style vests. These are the latest ideas in vests for young men. They will find them very comfortable. Also the E-Z-NEK Fold Attachment is being used in some of the young men's overcoats, adding to comfort of the garment.

Send for your copy of this handsome book now, before it slips your memory, and order your fall and winter clothes in time and be prepared for the cold weather.

Make 75c buy a dollar's worth. Our Big Catalogue shows you ho

Now Ready

Sent on Request



Send for
 Our
 New Book
 of
 Men's
 Made-to-Order
 Clothing

For an individual appearance to your clothes, have them made to order. With our up-to-date methods, we have brought smart, stylish, tailored-to-measure clothes, right into your home, with no loss of time to you to get them.

Our new fall and winter book of men's made-to-order garments is ready. Send for your copy now.

This book is the authority of smart styles for the man who wants clothes that are made to fit his individual figure. It contains illustrations of models that have met the approval of smart dressers, everywhere. You are not able to correctly judge fall and winter styles until you have seen the showing in this book. The large collection of samples displayed, you will agree, is finer than any we have shown heretofore. Regardless of whether your taste is for plain or fancy patterns you will find many that will please you. All the well-known fabrics, such as cheviots, cassimeres and worsteds are displayed in a wide range of designs.

It is so very easy to order your clothes by mail from us. You can make your selections in your leisure time. A friend or member of your family can easily take your measure; it requires no special knowledge of tailoring. The clothes are shipped prepaid to your home and you are assured absolutely that they will fit you, and with no delays for try-ons, etc.

Send for this new made-to-order book today and be a Montgomery Ward & Co. tailored man.

\$19.50
 Complete Suit
 Made-to-Order
All Wool
Blue or Brown
Worsted
 Herringbone
 Pattern

938L71310 — Blue
 938L71330 — Brown

A smart model for the man who wants an individual appearance in his clothes. Has the snap and style that well dressed men want. Be up-to-date and have your suit made to order for your own figure. This suit is sent prepaid to your door. Remember this fact when comparing our prices with others. The material is an all wool worsted, in a neat herringbone pattern. Your choice of blue or brown. Very dressy, will suit the most conservative taste.

Made as shown in illustration. Three button single breasted model. Wide lapel. Notch collar. A very sharp garment. Sleeves are finished with a three button vent with imitation buttonholes. Serviceable serge lining. Regular pockets.

Vest is made six button, no collar, style, showing slightly above coat opening.

Trousers are regular cut. For instructions how to measure, see back of order blank.

Will make this suit in any other style than described, if you desire.

Sent Prepaid	Not over 44-inch chest or waist	Over 44-inch chest or waist	Over 46-inch chest or waist
Coat to order . . .	\$11.50	\$12.50	\$12.85
Vest to order . . .	4.15	4.65	4.80
Trousers to order . . .	6.00	6.50	7.00
Suit Complete . . .	19.50	21.50	22.50
Coat and Trousers . . .	17.00	18.50	19.35
Per yard, width 54 inches			\$2.65



It will pay you to shop at home from Our Big Catalogue

MONTGOMERY WARD & CO.
 CHICAGO



\$3⁹⁵

Complete Suit

**Heavy
8-ounce**

**Blanket
Lined**

**Thorndike
Cottonade**

Sizes, 36 to 44 inch chest.
30 to 42 inch waist.
30 to 36 inch inseam.

A work suit at a price that should interest every man who uses this kind of garment. Made from a serviceable heavy weight, 8 ounce Thorndike cottonade. A material that will give good wear. Weight, of suit, about 10 pounds.

Coat made double breasted style. Blanket lined. Very large, square collar, with a shape retaining band and detachable tab. Two outside flap pockets with leather corner stays. A special pipe pocket in inside left facing has flap and fastener. Coat closes with riveted metal buttons. Average length, about 32 inches. Average weight, about 5 pounds.

Vest is single breasted, high cut. Has cottonade back. Three outside pockets. Blanket lined. Average weight, about 1 3/4 pounds.

Trousers are made full and roomy. Lined throughout with warm blanket cloth. Two top, two hip and one watch pocket. Securely riveted buttons. Strongly sewed throughout. Average weight, about 3 3/4 pounds.

42L5096—Coat\$1.98
42L5097—Vest89
42L5098—Trousers 1.38
42L5099—Complete Suit 3.95



\$2⁴⁵

Water-proof

**Paraffine
Duck**

**Blanket
Lined**

42L4681 — A warm waterproof Even sizes, 36 to 48 inch chest. Average length, about 32 inches. work coat. Very reasonable in price. Made from a strong brown duck that has been paraffine treated, making it waterproof. Made double breasted style as shown. Heavy blanket lined. Corduroy collar, width, 5 inches, closes with detachable tab. Sleeve heavy blanket lined. Duck armshields. Knit wristlets. Three outside pockets with flaps. One inside pocket. Coat fastens with metal riveted buttons. Average weight, about 1 1/4 pounds.

\$3⁹⁵

**Heavy Brown
Duck**

Beaverized

**Sheepskin Collar
Sheepskin Lined**

Even sizes, 36 to 48 inches.
Average length, about 32 inches.

42L4881 — Strong and serviceable work coat. Made from a firm woven, good quality heavy brown duck. Single breasted style. Beaverized sheepskin collar, width, six inches. Fastens with loop and buttons. Good quality sheepskin body lining. Sleeves lined with heavy cottonade. Top sleeve oil flapper interlined. Leather armshields, knit wristlets. Three outside pockets with flaps. One inside vertical pocket and one pipe compartment in facing. Coat closes with Thompson buckle fasteners.

A good value coat all the way through. Average weight, about 6 pounds.



\$9⁹⁵

**Big
Value**

**Beaver-
ized
Collar**



**Men's
Drab**

Moleskin Cloth Ulster

42L5051—Just the coat for the man who works outdoors. Will protect you from the rough winter weather. Made of a tough but pliable drab moleskin cloth, good quality fabric. Double breasted as shown. Fine grade sheepskin lining. Beaverized sheepskin shawl collar, width six inches, closes with tab and button. Heavy blanket lined sleeves. Moleskin armshields. Knit wristlets. Two warm, lined muff pockets, with leather corner stays. Two lower pockets, have wide leather facings. Coat fastens with sewed buttons and loops. Deep buttoned vent in back. Average length, about 50 inches. Even sizes, 36 to 48 inch chest. Average weight, about 8 3/4 pounds.

\$5⁹⁵

42L4249



Extra Heavy, 32-Ounce, Men's Plaid Mackinaw

Average Length, 34 inches.
Sizes, 36 to 48 inch chest.
Average Weight, 5 pounds.

42L4249—This coat will keep you warm on the coldest days. A high class garment in every way. Material is extra heavy weight (32-ounce). Made double breasted style. All around belt. Two plaits back and front from shoulders to bottom. Large shawl collar. Mackinaw front and collar facing. Two plaited patch pockets with flaps. Straps and buttons on sleeves.

\$4⁹⁵

30-ounce

Rain-proof All-Wool Mackinaw

- 42L4223
Red and Black Plaid.
- 42L4225
Brown and Black Plaid.
- 42L4227
Gray and Black Plaid.
- 42L4021
Plain Oxford Gray.



Even sizes, 36 to 48 inches, chest.
Average Length, about 34 inches.
State size wanted.

Every one of these four coats represents a big value at the price you are asked to pay. Consider that the fabrics have been chemically treated, rendering them rain-proof. This adds to the wear and is a big convenience to the wearer, as he can go out in any kind of weather and keep warm and dry.

The material in each coat is all wool, heavy weight, 30 ounce Mackinaw, known for its wearing qualities. Is firmly woven, giving warmth and durability. Your choice of red and black, brown and black, gray and black plaids or plain Oxford gray, any one of which makes an excellent coat.

Made in double breasted style. Full and roomy. Two plaits in back from shoulder to bottom. All around belt. Large shawl collar, can be turned up close around the neck and fastened with loops and buttons. Two bell-shaped, plaited outside patch pockets with flaps. Straps and buttons on sleeves.

If you are in need of a warm, rain-proof Mackinaw this season, you will do well to select one of these. **State size and color desired.** Average weight, about 4 pounds.

\$6⁹⁵

30-ounce



Rainproof Plaid Mackinaw and Drab Moleskin Cloth Reversible

Even sizes, 36 to 48 inch chest.
Average Length, about 34 inches.

42L4275—Serviceable, reversible coat. Really gives you two coats for the price of one. Made of brown and black plaid, all wool, Mackinaw cloth on one side and a tough, wear-resisting drab Moleskin cloth on the other side. These fabrics have been chemically treated, rendering them rainproof—an important fact to know when selecting an outdoor coat of this kind.

Double breasted style as shown in illustration. All around belt. Large shawl collar, which can be rolled high around the neck when desired. Two flap pockets on either side. Double stitched seams. Full and roomy coat. Average weight of coat, about 4 1/2 pounds. **State size wanted.**

Buy your Corsets from Our Big Catalogue. It pays

MONTGOMERY WARD & CO.
CHICAGO

15

Dressy Clothes for Little Boys



\$4⁹⁵

**Brown or Blue
Mixed Cassimere
2 Pair Knickers**

39L3075—Blue 39L3077—Brown

Ages, 8 to 16 years
State age and color wanted.

Durable suit for the boy. Made from a firm cassimere. A special lot of fabrics in assorted patterns. From 60 per cent to all wool.

Made in style as shown. Yoke back. Plaids from yoke to back belt. All round belt. Patch pockets. Two pair full lined knickerbockers. Full peg top style. Usual pockets. Belt loops. Average weight, about 3½ pounds.



\$2²⁵

**Brownish Mixed
Cassimere
Overcoat**

Ages, 3 to 8 years.
State age wanted.

39L3675—Good looking overcoat. Will keep the boy warm and comfortable. Material is a medium weight, novelty mixed cassimere overcoat. About 75 per cent wool. Will give good wear. Stylish model as shown. Has all around belt. Flap pockets. Close fitting collar. Serviceable sateen lining. Well made and strongly sewed. Offers an excellent value considering the very low price. Average weight, about 1½ pounds.



\$2⁴⁸

**Fancy Oxford
Novelty Suit**

Ages, 2½ to 7 years.
State age wanted.

39L3509—A little novelty dress-up suit. Material is a dark Oxford, mixed cassimere, with bluish thread decoration. Made as illustrated. Coat fastens at the neck only, with cord and tassel. Two flap pockets. Pearl button trimmed sleeves. Durable twill lining. Has a white plique, separate vest, with two little pockets. Pearl buttons. White attached collar to be worn outside of coat. Adjustable back strap and buckle. Trousers are made straight bottoms. Full lined. All around inside waistband. Two side and one hip pocket. Pearl buttons at knee. Average weight, about 1½ pounds.



\$4⁹⁵

**Child's Chinchilla
Outfit**

39L3681—Gray 39L3683—Blue

Ages, 3 to 8 years.
State age and color wanted.

A child's nifty outfit. Made from a warm, all wool, chinchilla cloth, in either gray or blue. Coat is double breasted, with all around belt. Close fitting collar. Warmly lined pockets. Durable twill lining to match. Hat—Rah-Rah style lined with sateen, inside ear band. Leggings of chinchilla, unlined, tape bound, adjustable leather foot strap. A dressy little garment that any mother would be proud to have her boy wear. Outfit consists of Coat, Rah-Rah Hat, and Leggings. Average weight, about 3¼ pounds.



\$4⁹⁵

**All-Wool
Blue Serge**

Ages 8 to 16 years.

State age wanted.

39L31E3—A natty suit that is sure to please every boy. All wool blue serge. Firmly woven, durable fabric. Three button, plain front coat, with all around attached belt. Three, buttoned patch pockets. Cuff on sleeve. Two knife plaids, from yoke to belt in back. Gondola wadding lining, guaranteed for one year. One pair full lined, full peg knickerbockers. Belt loops. Inside buttoned waistband. Double stitched and taped seat and linings. Strap and buckle at knee. Average weight, about 2 pounds.



Boys' Mackinaws



\$488

**Gray Wool
Chinchilla**

Ages, 9 to 16 years. State age wanted.

39L3435 — Dressy overcoat that is sure to please the boys. Made of a soft finished all wool chinchilla, neat gray color. Warm and comfortable. Double breasted style as shown. Plain back. Two outside patch pockets, one inside pocket. Cuff on sleeve. Heavy, durable, well lining. A serviceable garment, that is well made throughout. Average weight, about 3½ pounds.



\$375

**All-Wool, Red and Brown
Plaid Mackinaw**

Sizes
Chest, inches . . . 26 28 30 32 34
Average lgh., in. 28 30 30 30 30
State size wanted.

42L3937—Heavy, all wool mackinaw cloth. Nobby red and brown plaid. A fine, warm coat that will please the boy. Double breasted as shown. All around belt. Shawl collar. Double stitched throughout. Average weight, about 3½ pounds.

Cap to Match
42L3938—Same material as coat. Fur lined inside. Pull down band. Sizes, 6½ to 7½. Weight, 1 pound. State size wanted. **65c**



\$465

**Blue, Gray and Red
Rainproof Mackinaw**

Sizes
Chest, inches . . . 26 28 30 32 34
Average lgh., in. 28 30 30 30 30
State size wanted.

42L3941—The kind of coat the boys like. Made from a heavy weight wool mackinaw cloth. Chemically treated, making it rainproof. Nifty blue, gray, and red plaid. Made as shown in illustration. Double breasted. Shawl collar, all around belt. Average weight, about 3½ pounds.

Cap to Match
42L3942—Same material as coat. Has fur lined, inside pull down band. Sizes, 6½ to 7½. Weight, 1 pound. State size wanted. **75c**



\$495

**Natty Brown
Plaid Mackinaw**

Sizes
Chest, inches . . . 26 28 30 32 34
Average lgh., in. 28 30 30 30 30
State size wanted.

42L3945—Buy the boy a mackinaw and he can defy the cold weather. The fabric is a brown plaid mackinaw cloth. About 85 per cent wool. Warm and good wearing. Double breasted style. Large shawl collar. Plaid back and front. All around belt. Usual pockets. Straps on sleeves. Average weight, about 3½ pounds.

Cap to Match
42L3946—Material same as coat. Warm fur lined pull down inside band. Sizes, 6½ to 7½. Weight, 1 pound. State size wanted. **80c**



\$595

**Dark Brown Melton
Coney Fur Collar**

Ages, 9 to 16 years.
State age wanted.

39L3469 — A nifty, fur collar overcoat. Very stylish and dressy. Material is a dark brown melton Good weight fabric about 75 per cent wool. A good cloth for boys' wear. Made in double breasted style as shown in illustration. Dark brown coney fur collar adds style to the garment, as well as warmth around the neck. Cuffs on sleeve. Gondola Venetian lining, guaranteed for one year. Usual pockets. Average weight, about 4 pounds.

Simple Hints on Ordering

It is not hard to order goods from us by mail; in fact, nothing is easier or simpler; and no other method of buying goods is so profitable for you.

Use one of our printed order blanks if you have one; if not, use any plain piece of paper.

Write down the number of the article you desire, and then the quantity, followed by the name of the article, giving size or color, if any. Then put down the price. Use a separate line for each article.

Write your full name and address, and write as plainly as possible.

How to Send Money

You can send money by your Personal Check if you have a bank account, by Post Office Money Order, Express Money Order, Bank Draft or Cash by Registered Letter. If you live on a rural route and desire to send Post Office Money Order, your letter carrier will buy the money order for you and will enclose and mail it to us with your letter. Simply give him the money and your letter. He will do the rest. You need not go to the Post Office. We will guarantee the safe arrival of money sent in any of the above ways.

State Sizes and Colors



BE SURE to give all measurements, and color when this information is asked for in the description of any article in our Catalogue. It is absolutely necessary and will help us to serve you more promptly and satisfactorily.

Buy Your Winter Underwear From This Sample Book

On the following pages you will find a complete showing of Men's, Women's and Children's Underwear and actual samples of the materials. Buying from this sample book is easy; you can select exactly the kind of material that suits you best. There is almost no end of different weaves and weights to choose from; the values are remarkable.



In spite of the war, which has cut off the foreign supply for much of this merchandise, our showing of fine imported goods is quite complete. Our orders were placed well in advance; most of our stock was on its way over or had actually arrived in this country before shipments stopped.

Underwear is only one of the items of winter clothing every member of the family needs. This book contains representative showings of Boys' and Men's Suits and Overcoats, Mackinaws, Sweater Coats and Hosiery for the family, Hats and Caps, Men's, Women's and Children's Boots and Shoes, as well as Blankets and Comforters, Fur Robes, Shawls, etc.—everything, in fact, to help make your winter outfit complete.

With the exception of the underwear showing, which, as we have said, is exceptionally complete, the goods shown in this book are only a suggestion of the complete lines in our big General Catalogue No. 84 which you have.

Buy ALL the Winter Clothing for ALL the Family NOW



You'll soon need it. Anticipate your wants; combine your clothing orders with your orders from this underwear sample book. Use this book and our big Catalogue 84 together. We clothe you from head to foot, and we make you a substantial saving at the same time. The best and most profitable way for you to order is to make a complete selection of all your clothing needs, then order enough groceries and other heavy goods to make up a good sized freight shipment. The low freight rates make the shipping charges on each item very small.

Our Guarantee

We Guarantee that every article sold will be as illustrated and described in our Catalogue; will arrive in good condition; will serve its intended purpose; and will be satisfactory to you.

You may always exchange for other articles or have your money back, including, in either case, the transportation charges which you have paid.

It is our desire to make trading with us so easy, so profitable, and so satisfactory, that you will be pleased not only with the goods received, but also with our service and our entire method of dealing.

Never Let Good Opportunities Go By

Opportunities to save.

Our big catalogue is filled with them.

Never before have we issued catalogues so cramful of opportunities to save on practically everything you eat or wear or use in any way.

Whenever a need for anything arises—a tool, a piece of furniture, some cooking utensils, bedding or clothing, let your first thought be of our large Catalogue. Turn to the item you need and see for how little money you can secure it here.

Shop around if you wish. Compare our prices—our quality—with those you can secure elsewhere. Such comparisons can only serve to prove the economy of buying from Montgomery Ward & Co.

Special Sweater Coat Values

State Size
and Color
Wanted



Men's Medium Heavy Sweater Coat

Each **31L3046**
\$1.89 COLORS: Oxford gray, navy blue or maroon.

Sizes, 34 to 44 inch chest. Weight, 25 ounces. Order two inches larger than chest measure.

State size wanted.

Men's Extra Value Half Wool and Half Cotton Sweater Coat. Fashioned single ruff neck collar. Heavy weight. Fine ribbed. Two pockets with fine knit top. Double ribbed cuffs and bottom. Fine ribbed border. Colored Ivory buttons to match. A \$2.50 retail value.

All Wool Shaker Knit Coat

Each **31L3140**
\$4.25 COLORS: Oxford gray, navy blue or maroon.

Size, 34 to 46 inch chest. Weight, 34 ounces. Order two inches larger than chest measure.

State color wanted.

Heavy Weight Shaker Knit All Wool Sweater Coat for Men. Full fashioned and hand finished throughout, including fashioned ruff neck collar. Two swing pockets. Ribbed cuffs. Double shaker knit border, interlined. Ivory buttons to match color of coat. A \$6.00 retail value.

Boys' Heavy Weight Sweater Coat

Each **31L3312**
\$1.00 COLORS: Oxford gray or cardinal.

Sizes, 26 to 34 inch chest. Weight, 15 ounces. Order two inches larger than chest measure.

Half Wool and Half Cotton Sweater Coat for boys 6 to 14 years of age. Heavy weight. Fine ribbed. Double shawl collar. Two pockets. Plain knit bottom. Fine rib cuffs. Ivory buttons to match. Well made in every way and will give good service. A \$1.35 retail value.

Misses' Sweater Coat

Each **31L3509**
\$1.69 COLORS: Cardinal, Oxford gray or navy.

Sizes, 26 to 34 inch bust. Weight, 15½ ounces. Order two inches larger than bust.

State color wanted.

Heavy Weight. Made of half wool and half cotton. Plain ribbed stitch. Fashioned ruff neck collar. Two pockets, with turn over tops. Fine ribbed cuffs. Buttons match coat in color. Extra button and loop on collar. Suitable for misses from 6 to 14 years of age. This quality would sell at retail for about \$2.00 each.

Women's Fancy Ribbed Sweater Coats

Each **31L3540**
\$1.98 COLORS: Cardinal, oxford gray or white.

Sizes, 34 to 44 inch bust. Weight, 15 ounces. State color wanted.

Order two inches larger than your bust measure. Heavy Weight All Wool Coat in Fancy Zig Zag pattern. Single shawl collar. Two pockets with turn over tops. Turn back rib cuffs. Saten facing under front border. Ivory buttons to match coat in color. Very attractive coat and one that will not only be stylish looking but very serviceable. Would sell at retail for \$3.00 each.

Women's Extra Heavy Zephyr Wool Coat

Each **31L3585**
\$5.49 COLORS: Cardinal, white or oxford gray.

Sizes: 34 to 44 inch bust. Weight, 25 ounces. State color wanted.

Order two inches larger than your bust measure. Extra Heavy Weight Knitted Coat. Made of pure Zephyr wool, fine ribbed. Plain knit, full fashioned ruff collar. Three hand finished pockets, with turn over tops. Plain knit border and bottom. Turn back coat cuffs. Pearl buttons. Would sell at retail for \$7.50.

School-time again. There'll be a call for school shoes, warm caps, gloves, mufflers, sweaters, hosiery—all the cold weather needs of winter school days, including all the pens, pencils and other things for school work. They're all in our big, New Catalogue, which you recently received.

Every once in awhile we do something unusual—our big Fall Catalogue '84 is a good example. Arranged better than ever; new features; easier to shop from in every way, especially with the handy new thumb index. Refer to it while you're making up your order from this Underwear Book.

Special Good Values from

Our Hosiery Department



Heavy Weight
35c Sock
for
25c

Nearly All Wool
Per Pair **25c**
Six Pairs for \$1.43
30L1517

Colors, dark Oxford gray, or dark blue mixed. Sizes, 10½, 11 or 11½ only. Weight, per pair, 4¾ ounces. State size and color wanted. Nearly All Wool Socks. A standard value with us for several years and are of a quality that will give you perfect satisfaction. Ribbed tops with white tipping. Seamless feet with white heels and toes.



Seamless
23c

Per Pair **23c**
Six Pairs for \$1.31

Medium Heavy

30L1440—Black.
30L1441—Light Gray.
30L1442—Dark Gray.
Sizes, 9½ to 11½.
Weight, per pair, 2½ ounces.
State size and color wanted.
Men's Cashmere Socks of Wool and Cotton Mixed. Over ½ wool. Medium heavy weight. Ribbed tops. Seamless. Gray heels and toes. Retail value 30c per pair.



Fine Gauge **Extra Quality**

Per Pair **25c**
Three Pairs for 71c

Fine Cashmere

30L1154—Black.
30L1155—Gray.
Sizes, 8½ to 10.
Weight, per pair, 3 ounces.
State size wanted.
Women's Wool and Cotton Mixed Cashmere Stockings. About one-half wool. Good winter weight. Fine gauge. Six-inch ribbed garter tops. Plain legs. Gray heels and toes. Seamless. Will give perfect satisfaction.



All Wool
48c

Per Pair **48c**
Three Pairs for \$1.37

Home Knit

30L1466—Black.
30L1467—Gray.
Sizes, 10 to 12.
Weight, per pair, 3¾ ounces.
State size wanted.
One of the best values ever offered in Men's Home Knit all Wool Socks. Very heavy weight. Ribbed tops. Full fashioned heels and toes. These home made socks will outwear almost any other socks known. A 75c retail value.



Heavy Weight
48c

Per Pair **48c**
Three Pairs for \$1.37

Heavy All Wool Alaska

30L1535—Gray.
30L1538—White
Sizes, 10½, 11 or 11½.
Weight, per pair, 5 ounces.
State size wanted.
Our new Alaska Special Heavy Weight All Wool Men's Sock. Especially durable and very warm. Closely knitted. Heels and toes are of six thread, pure worsted yarn, with mercerized effect. Ribbed tops.



Heavy Weight Children's Stockings

Per Pair **25c** Six Pairs for \$1.43

30L1342—Black.
Sizes, 5½ to 10.
Weight, 3½ ounces.
State size wanted.
Children's Winter Weight Stockings. Over one-half fine wool with enough cotton added to give good hard service. Heavy weight. Tuck stitch. Ribbed legs and top. Shaped at ankles. Plain knit feet. Gray heels and toes. Seamless. A 35c retail value.



Boys' Wide Ribbed Leg

Per Pair **45c** Three Pairs for \$1.28

30L1360—Black.
Sizes, 6 to 10.
Weight, per pair, 8 ounces.
State size wanted.
Boys' Heavy Wool Worsted Stockings for winter wear. About one-half fine wool and hard twisted cotton mixed. Wide ribbed legs. Plain knit seamless feet. Gray heels and toes. A 60c retail value.



Women's Ribbed Leg

Per Pair **25c** Six Pairs for \$1.43

30L1184—Black.
Sizes, 8½ to 10.
Weight, per pair, 3 ounces.
State size wanted.
Our Leader in Wool and Cotton Mixed Stockings for Women. Over one-half Wool. Heavy weight. Ribbed legs. Plain ankles and feet. Gray heels and toes. Seamless. Would retail for 35c a pair.



Women's Fleece Lined Cotton

Per Pair **25c** Six Pairs for \$1.43

30L1130—Black.
Sizes, 8½ to 10.
Weight, per pair, 4 ounces.
State size wanted.
Fine Quality Fleece Lined Cotton Stockings for Women. Heavy weight. Shaped legs and ankles. Double soles. High apitied heels. We especially recommend this as a good weight winter stocking, of special value.

Our Work Shirts are wider and longer than the majority sold

MONTGOMERY WARD & CO.
CHICAGO

Out-of-the-Ordinary Values in Knit Goods



Fancy Angora Set

Per set,
Cap and Scarf **\$1.50**
31L3890

Colors, Tan with brown, Delft blue with white or gray with white. Weight, per set, 7 oz. State color wanted. Exceptionally attractive Angora or Brushed Set of Skating Cap and Scarf. Top of cap is gathered at one side, and finished with pompons. Border finished with chain pattern in contrasting color. Width of scarf is 9 inches, length is 64 inches. Retail for \$2.50.



Auto Hood

79c
31L3866

Colors, Oxford gray, cardinal, white or black. Weight, 5 oz. State color wanted. Women's Auto Hood of Zephyr Wool and Mercerized Cotton. Fancy stitch top. Turn back border. Knitted ties. A very pretty Hood and one that is very warm and will give excellent service. Silk ribbon bows on each side.

The Goods on This Page

are only a representative showing of the complete line of warm Winter knit goods in our big general catalogue which you recently received. The prices here are not special—reduced to "get trade." They are a fair example of the bigness of value which we have adopted as our standard and which we maintain throughout our catalogue. If you have any doubt on this subject, take down our big book now—look through it, compare the prices with those you have been paying. You will find that the savings represented by our prices on all goods are quite as great as those afforded by the prices on this page.



Ladies' Auto Hood

59c
31L3855

Colors, Plain White, Cardinal or Oxford Gray. Also White with Navy Stripes of Fancy Stitching. Weight, 4½ oz. State color wanted. Very serviceable Auto Hood in Fancy Stitch. Made of nearly all wool, trimmed with fibre silk stitching. Lining of saten which adds to its durability. Wool pompon on each side. Long knitted ties.



Girls' Angora Set

Per set,
Cap and Scarf **95c**
31L3940

Colors, delft blue, with white, red with white, or gray with red. Weight, per set, 6 oz. State color wanted. Girls' Angora Cap and Scarf set. Cap fastened on each side with pompons. Roll back border. Scarf matches cap in color. Width, 6½ inches. Length, 50 inches. Extra quality.



Child's Three-Piece Set

Per set,
Cap, Coat and Leggings **\$1.49**
31L4002

Colors, Cardinal, or oxford gray. Ages, 1 to 3 years. Weight, per set, 13½ oz. State age and color wanted. Infants' Set of Coat, Cap and Drawer Leggings. Ribbed weave of wool and cotton mixed. Coat has Byron collar. Double ribbed cuffs. Cap has pompon on top. Leggings have draw straps at waist. Oil cloth straps, under feet. State age.



Reversible Hockey, 33c

31L4058

Colors, Oxford gray with border of Oxford gray and maroon; navy blue, with border of navy blue and red; cardinal, with border of cardinal and gray; black, with border of orange and black. Weight, 3 oz. State color wanted. Medium Heavy Weight Wool and Cotton Plated Skating or Hockey Cap for Boys or Girls.



Shaker Knit 49c

31L4070

Colors, Oxford gray band with maroon top, navy blue band with Oxford gray top, maroon band with white top, orange band with black top. Weight, 4 oz. State color wanted.

Fine quality, strictly all wool, shaker knit skating or hockey cap. For boys or girls.



Reversible Cap 37c

31L4060

Colors, navy blue with cardinal; reverse, navy blue. Cardinal with Oxford gray; reverse, cardinal. Oxford gray with navy blue; reverse, Oxford gray. Orange with black; reverse, orange. Weight, 3 oz. State color wanted.

One of our most popular lines in men's or boys' skating or hockey caps. Wide rib. Very elastic all wool.



Infants' Knitted Cap, 35c

31L4030

Colors, white, cardinal or light blue. Infants' size only. Weight, 2 oz. State color wanted. Infants' knitted cap of wool and cotton mixed. Turn over top, fastened at one side with two large pompons. Double roll border. Fancy stitch. Warm and very elastic.

Child's All-Wool Coat Each, 98c

31L3648— Colors, Plain white or white with blue or cardinal on collar, cuffs and border.

Ages, 1 to 3 years. Weight, 5 ounces. State age and color wanted. Child's Zephyr Wool Sweater Coat in fancy stitch. Has Byron collar, plain knit border, turn back cuffs, pearl buttons. Collar, cuffs and border are in contrasting colors to the rest of the coat. \$1.50 Retail Value.



WOMEN'S GLOVES



SUEDE WINTER GLOVES
35L2156—Medium Brown 59c
 Sizes, 6 to 8½
 Made in half sizes only. Weight, 3 ounces
 State size wanted.
Women's Undressed Kid Gloves. Heavy
 fleece lined throughout. Have in seam. Three-
 row, silk stitched backs. One clasp fastener.



35L2162—Brown. Price 99c
 Sizes, 6 to 8½. Weight, 4 ounces.
 Be sure to state size wanted.
**Women's warm fleece lined gloves with
 Coney fur top.** Made from fine pliable Sueded
 lamb skins. Half pique sewn. Paris point
 back. One clasp fastener.

Very Warm, Serviceable Mittens



35L2166—Brown. Price. 59c
 Sizes, 6 to 9. Weight, 4 ounces.
Women's warmly lined dress kid mittens,
 made from carefully selected Domestic lamb-
 skins. Overstitched seams. Paris point back.
 One clasp fastener. Rich Coney fur top.



35L2256—Black **35L2260**—Gray
35L2258—Navy Blue **35L2262**—Brown
 Price 24c
 Sizes, small, medium and large. Weight, 2 oz.
 Mention size wanted.
Women's knitted yarn. Golf gloves. Have
 seamless fingers which assure better fit, better
 comfort and better wear.

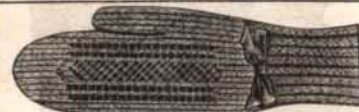
On this page are a few suggestions in winter gloves. This is a very small representation of the complete line shown in our General Catalogue. If you do not find what you want here, turn to your copy of the big book. There you will find a line to select from which is second to none in variety, quality and price. On other pages in this book you will find showings of men's furnishings—goods which will be needed for the cold weather. Include these goods with your order for underwear and have it all shipped at once. It will mean a further saving in shipping charges.



Finest and warmest fur lined gloves made.
35L2150—Tan. Price \$2.49
 Sizes, 6 to 8½. Weight, 5 ounces. State size.
**Women's fur lined, imported cape skin
 gloves.** Made from finest skins obtainable.
 Full outseams. Spear point backs and two
 clasp fasteners. Warm, genuine Coney fur
 lining.



35L2254—Black 39c
 Sizes, 5½ to 9, half sizes only. Weight, 2 oz.
 Please state your size.
Women's very attractive cashmere gloves.
 Fully fleeced and silk lined to the fingers.
 Three row black silk stitching on the back.
 Two clasp fasteners, full in seam. Very dressy.



**WOMEN'S PLAIN BLACK ALL WOOL
 MITTEN**
35L2294—Our price 45c
 Color, Black. Weight, 2½ ounces.
Women's Plain Black, All Wool Mittens.
 Have fancy knit open work back and closely
 fitting wristlet. Warm and comfortable.

MEN'S GLOVES



**Warm
 Dressy
 Durable**
35L3052—Brown. Price 49c
 Sizes, 7½ to 11. In half sizes.
 Weight, 4 ounces. State size.
Men's Warm Suede Gloves for Dress Wear.
 Have fleece lining. Half Pique seam. Fancy
 stitched backs. One clasp fastener.



**Just
 Right
 for
 Winter
 Time**
35L3060—Tan. Price \$1.49
 Sizes, 7½ to 10½. Made in half sizes.
 Weight, 4½ ounces. State size.
**Men's Very Fine Imported Cape Dress
 Gloves.** Have all wool seamless Knit lining.
 Half pique seams. Rich Paris Point backs.



**Best
 Lamb-
 lined
 Buck-
 skin**
35L3084—Buck Gray. Price \$2.89
 Made in half sizes, 7½ to 11. Weight, 7 oz.
 Mention size wanted.
**Men's lamb fur lined, genuine buckskin
 gloves.** Made from selected strong but soft
 skins. Half pique, half outseams. Paris
 point backs. One clasp fastener. Try a pair.



**Strong
 and
 Warm**
35L3238—Price 48c
 Color, yellow only. Sizes, regular and extra
 large. Weight, 11 ounces.
**Men's strong, heavy fleece lined working
 mittens.** Have full welted seams, yarn wrist.
 Chrome tanned cowhide split back. Strong
 genuine Horsehide palm and thumb.



Full Lamb Lined
 Sizes,
 regular
 and
 extra
 large.
35L3218—Light tan. Price \$1.19
**Men's Indian tan lamb, split lined Horse-
 hide Mittens.** Have full welted seams. Very
 warm knit wrist, trimmed around the edge
 with lamb's wool. Adjustable string fastener.
 Best winter mitten in our line.



**Good
 Wear
 in
 Each
 Pair**
35L3322—White. Twelve pairs 79c
 Net weight, per dozen, 24 ounces.
Full seven-ounce gloves. Made from best
 grade of white Eastern Canton Flannel cloth.
 Cut in the right sizes. Fleece outside. Good
 elastic brown knit wrists.



**DOUBLE THUMB
 BEST HUSKING MITTEN**
35L3330
 Price per
 doz. pairs
 only 75c
 All
 full sizes.
 Weight,
 per dozen,
 26 ounces.
**Men's Very Heavy White Husking Cloth
 Mittens.** Double Palm and Thumb. Rich
 fleece outside. Cut from the best 7 ounce
 cloth obtainable. All full sizes. In dozen lots
 only. Extra good wearing quality.

Two Interesting Examples of Our Fall and Winter Showing in Women's Outer Apparel

If by any chance you have failed to study the style showing in the new Catalogue 84 which you recently received, these two values should be ample proof that there is unusual interest in that section of our Big Fall Book.

Our resourceful buyers and clever designers have

10L5000—Prepaid \$6⁹⁸
 Bust Measure, 34 to 36 inches
 Skirt length, (deep hem) 40 inches

All Wool Serge

Here is a splendid example of the values offered by our Fashion Department! A serviceable and stylish dress made of splendid quality All Wool Serge. The material, style and workmanship are the kind you associate with a much higher priced dress. Note the entirely new style features; the smart military braiding, and the graceful plaited skirt. The becoming collar is made of white pique and is detachable so that it can be easily laundered. The waist shows a stylish single label effect extending from the neck to the waist line, trimmed with bands of Hercules braid and fancy buttons in military effect. The dress closes invisibly under this lapel. On the right side, a tailor-stitched tab conceals a breast pocket. The full length set-in sleeves are trimmed with braid and buttons in cuff effect. Back of waist untrimmed. A belt, neatly bound with braid joins the waist to the stylish plaited skirt. There are double box plaits at center of skirt, front and back alike, an inverted plait at each side, and additional side plaits. These plaits are arranged to give perfect fitting lines at waist and hips, and a graceful ample flare to the lower part of the skirt.

COLORS: Navy blue with black braid, black with black braid, or brown with brown braid. Mention size and color wanted.

12L101—Prepaid \$1⁹⁸
 Width of Hat about 12 inches

Velvet and Messaline Silk, with Ostrich Tips

A good retail value, \$3.50 hat for \$1.98. Smart style, excellent quality and becomingness are splendidly combined in this model. The medium size shape has round crown of messaline silk. Brim which rolls at left side has under-facing of messaline and upper-facing of velvet. A narrow band of black and white woven check ribbon encircles crown, with double tailored bow at right side. Three beautiful ostrich tips at left side give desirable height. Smart tailored bow of checked ribbon conceals ends of tips. This hat is sure to find favor among good dressers. Excellent with tailored suits and smart enough for dressy wear, as black and white is one of this season's most favored combinations.

Black velvet and messaline hat, black and white woven check ribbon with white ostrich tips.

gone the limit to make our style showing attractive and inviting. Our big volume in buying and selling is evidenced here by prices that speak for themselves. The two features on this page certainly are stylish and smart; you'll find all our fashion pages equally interesting.



**12L101
 Prepaid
 \$1⁹⁸**



**10L5000
 All Wool Serge
 \$6⁹⁸**

Very Special Values in Auto, Buggy or Steamer Robes



Medium Heavy All Wool

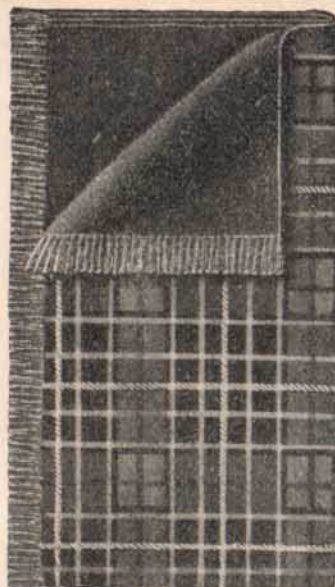
Each
\$4⁹⁸

31L4775

Colors, one side plain Navy blue, brown or dark green. Other side fancy plaid.

Size, including fringe, 60x78 inches. Weight, each, 3½ pounds. State color wanted.

Medium heavy all wool robe suitable for use in automobiles, buggies or for travelling. Very attractive, plain colors on one side, other side fancy plaids. Fringe both ends. A \$6.50 retail value.



All Wool Auto Robe

Each
\$3⁹⁸

31L4762

Colors, one side plain dark brown or navy blue; other side fancy plaid.

Size, including fringe, 60x78 inches. Weight, each, 3½ pounds. State color wanted.

Fine all wool Automobile or Steamer Robe. Fringe on both ends. Is very serviceable, and comes in attractive patterns. You would pay at least \$5.00 for a robe of equal quality at retail.

All Wool Water-Proofed Robe

Each
\$7⁹⁸

31L4785

Colors, fancy plaid on both sides, navy blue, brown or dark green.

Size, including fringe, 64x84 inches. Weight, each, 4½ pounds. State color wanted.

Our fancy plaid, heavy weight automobile or steamer robe. Made of good quality all wool. This robe has been put through a special process which makes it waterproof. Fancy plaid on both sides. Fringe at both ends. A \$12.00 retail value.



Buffalo Fur Cloth Robes

95L4885—Black. Size, 54x62 ins. Wt., 9½ pounds..... **\$6.65**

95L4886—Brown. Size, 54x62 ins. Wt., 9½ pounds..... **\$6.65**

Norway Buffalo Fur Cloth Robes are the best imitation of Buffalo Fur and cost much less, yet will wear much better than fur. No seams to crack or rip, no fur to rub off, no odor. They are very pliable and are easily wrapped around body. Face of wool; fur cloth heavy back, interlined with rubber drill, not affected by cold weather. Backed or lined with Astrakhan cloth. Practically cold, wind and waterproof.



New Plush Auto Muff Robe

95L4930—Size, 54x66 inches. Weight, 14 pounds, **\$7.98**

Twentieth Century Automobile, Carriage or Wagon Robe. The newest and most up-to-date weatherproof lap robe we offer. A robe made especially for us, combining, in our judgment, the chief essentials and serviceable qualities that a robe should have. Made with two pocket muffs, as shown in the illustration. The face of this robe is an extra quality mohair plush in rich, shaded, brown tone effects; plain black, extra quality plush back with an all around double scalloped felt border. Extra quality rubber interlining. A robe that will give you the acme of service and warmth in wear. Is practically

Our Frost King Weather-Proof Robe

Practically the same robe as described above, except that it is not made with the pocket muffs. The same grade of materials throughout. 95L4918—Size, 54x72 inches. Weight, 10½ pounds. Price, each..... **\$6.75**

Plain Double Plush Robes

95L4922—Size, 64x72 inches. Weight, 10½ pounds. Price..... **\$5.15**

95L4923—Size, 64x84 inches. Weight, 12 pounds. Price..... **\$6.95**

A novelty in a plush robe, being large size, extra heavy and extra warm. Made in two-ply regular robe plush, good quality, fully interlined with an extra heavy rubber drill, making a three-ply robe which is wind, water and storm proof. Plain green, raised plush face, plain black plush back. Very desirable for automobiling, sleighing or for use in any kind of conveyance where a robe is needed as a covering.



PRactical
DURABLE AND
COMFORTABLE

Sensible Winter Footwear

FOR EVERY MEMBER OF THE FAMILY—FATHER—MOTHER—SISTER—BROTHER

ECONOMICAL
RELIABLE AND
SATISFACTORY

MEN'S HEAVY STORM BOOTS

Height, 11½ Inches

ONLY **\$3²⁵** Strong Serviceable Economical
PER PAIR



Brown or black grain leather uppers. Riveted. Heavy half double soles. Nailed. Wax thread stitched. Bellows tongue. Wide widths. Sizes: 6 to 12. No half sizes. Shipping weight, about 4½ pounds.

24B2005—Black.

24B2010

24B2005 24B2010—Brown.

WOMEN'S BLACK CALF 16 BUTTON HI-CUT

ONLY **\$2³⁹** PER PAIR

A Fine Looking Fall and Winter Shoe

Sensible heel and toe. Good quality black calf. Strong soles. Wide widths. Sizes: 2½ to 8. Shipping weight about 32 oz.



24B1382

SIX MONTHS GUARANTEED SHOES

Our Six Months' ONLY **\$2⁹⁵** Guarantee PER PAIR

Sizes 13 and 14, 50c pair Extra

These shoes are guaranteed to give absolute satisfaction for six months. Everything used is selected to insure the best service, so we can sell them under our binding guarantee of satisfaction for this long period.

Brown or black, barnyard proof, upper leather. Unlined. Full double soles from toe to heel. Bellows tongue. Leather insoles, counters and heels. Wax thread stitched. Full vamps. Brass nailed. Riveted uppers. Wide widths. Sizes: 5 to 14. Sizes, 13 and 14, 50c pair extra. No half sizes. Shipping weight, about 63 ounces.

24B1820—Brown.
24B1825—Black.



24B1825

24B1820

GIRLS' BLACK CALF HI-CUTS

Button or Blucher—For School and Play

\$155 to \$200

Strong soles. Full vamps. Shipping weight, 18 to 32 ounces.

Button

24B2871—2½ to 5½.....\$2.00
24B2872—1½ to 2..... 1.75
24B2874—8½ to 11..... 1.55

Blucher

24B2889—2½ to 5½.....\$2.00
24B2890—1½ to 2..... 1.75
24B2895—8½ to 11..... 1.55



BLACK KID

98c PER PAIR

CHILDREN'S HI-CUTS

\$1.00 PER PAIR

PATENT LEATHER

Pretty dress-up shoes. Stylish, roomy footform shape. Strong turn soles. Sizes: 4 to 8. Shipping weight, about 10 ozs.

24B3108—Black kid.....98c
24B3245—Patent leather \$1.00



24B3108



24B3245

BOYS' STRONG BROWN HI-CUTS

Sizes, **\$175** Sizes, **\$239**
9 to 13½ 1 to 5½

Strong kangaroo grain. Full vamps. Bellows tongue. Heavy soles. Nailed. Durable as well as stylish and easy on the feet. Shipping weight, 29 to 47 ounces.

24B2202—1 to 5½, \$2.39
24B2312—9 to 13½, 1.75



24B2202

24B2312

MONTGOMERY WARD & CO.
Chicago Avenue Bridge CHICAGO

\$1¹⁰
Per
Suit



**Read This Before Making Out Your Order
for Underwear**

We require the following measurements in order to give you correctly fitting garments. You will find the sizes in which each garment is made, in the description of that particular garment.

Men's Shirts and Drawers

Give chest measure in inches for shirts and waist measure in inches for drawers.

Men's Union Suits

Give chest measure in inches, also your height and weight.

Boys' and Youths' Shirts and Drawers and Union Suits

Order by age only. If child is very large for its age, order next size larger. For the average child, the size we quote will be plenty large enough.

Women's Vests and Drawers

Give bust measure in inches for Vests and hip measure in inches for drawers.

Women's Union Suits

Give bust measure in inches.

Girls' Vests and Drawers and Union Suits

Give age only. If child is very large for its age, order next size larger. For the average child, the sizes will be plenty large enough.

\$1⁰⁰
Per
Garment



**Heavy Weight Fleece Lined
\$1.00 Value for 74c**

Heavy plain knit Underwear. Made with fine cotton outside, and with soft fleecing on the inside. This is a heavy weight cotton garment and with the fine fleecing, is extra soft and warm. Exceptionally well made. We are sure this will give excellent service.

Men's Shirts and Drawers

- 29L78—Shirts, each \$0.74
- 29L79—Drawers, each 3.74
- Three of either Shirts or Drawers 2.11
- Color, Heliotrope mottled. Sizes, Shirts, 34 to 48 inch chest measure, Drawers, 30 to 48 inch waist measure. Weight, Shirts, 18 ounces for size 40. Drawers, 15 ounces for size 36.
- Shirts—Single breasted. Mohair bound neck and front. Double ribbed cuffs. Three pearl buttons.
- Drawers—Ankle length. Double ribbed cuffs. Self facing. Suspender loops. Pearl buttons. Usually retails for \$1.00 per garment.

Men's Union Suits

- 29L236—Union Suits, each \$1.10
- Three Suits for 3.15
- Sizes, 34 to 44 inch chest measure. Weight, per suit, 27 oz. for size 40. Mention size wanted. Union Suits are made with closed crotch.

Boys' Shirts and Drawers

- 29L316—Shirts, each \$0.42
- Three Shirts for42
- Sizes, for boys 6 to 16 years of age. Weight, Shirts, 11 ounces; Drawers, 10 ounces, for age 10. 1.20

Boys' Union Suits

- 29L336—Union Suits, each \$0.83
- Three Suits for 2.37
- Weight, per suit, 17 ounces, for age 14. State age wanted.

**Nearly All Wool—Natural
Gray \$1.50 Quality for \$1.00**

Our Leader in Men's Flat Knit Shirts and Drawers. Made especially for us, and are perfect in every respect. Color is Natural Gray. Contains 69 per cent of fine selected wool and 31 per cent of best Peruvian cotton. The addition of this amount of cotton makes the garments wear better, and will prevent shrinkage when washed. Looks and feels like all wool. Warm and comfortable and just the right weight for winter wear. Would retail for at least \$1.50 per garment.

Shirts—Silk mohair bound neck and front. Ribbed cuffs and tail. Three pearl button front.

Drawers—Ankle length. Ribbed cuffs at ankles. Satin facing. Suspender loops. Tied back.

- 29L4—Single Breasted Shirts \$1.00
- 29L5—Drawers to Match 1.00
- Three of either Shirts or Drawers 2.85

Sizes, Shirts, 34 to 50 inch chest measure. Drawers, 30 to 50 inch waist measure. Weight, Shirts, 16 ounces for size 40. Drawers, 13 ounces for size 36.

- 29L8—Double Breasted Shirts \$1.29
- 29L9—Drawers to match 1.00

Sizes, Shirts, 34 to 50 inch chest measure. Drawers, 30 to 50 inch waist measure. Weight, Shirts, 19 ounces for size 40. Drawers, 13 ounces for size 36.

Be sure to state size wanted.

Shirts and Drawers for Stout Men

Made of not quite as good a quality as 29L4 and 29L5, but in extra large sizes for Stout Men. Sizes, 52 to 60 inch chest and waist measure. Weight, shirts, 25 ounces for size 54. Drawers, 20 ounces for size 54.

- | | | | |
|---------------------|--------|--------|--------|
| Extra Sizes | 52-54 | 56-58 | 60 |
| 29L16—Shirts, each | \$1.15 | \$1.25 | \$1.35 |
| 29L17—Drawers, each | 1.15 | 1.25 | 1.35 |

Our Union Suits have made us scores of friends. May we count you one?

MONTGOMERY WARD & CO.
CHICAGO



Heavy Weight Natural Gray

Plain knit from selected wool and with just enough cotton added for better wear and to prevent shrinking when washed. Contains about two-thirds finest wool and one-third combed cotton. Plenty heavy enough for the coldest winter wear. Color, Natural Gray only. State size wanted.

Men's Shirts and Drawers
29L12—Shirts \$1.25
29L13—Drawers 1.25
Three Shirts or Drawers 3.57
Sizes: Shirts, 34 to 44 inch chest, Drawers, 30 to 44 inch waist.
Weight: Shirts, 16 ounces for size 40, Drawers, 14 ounces for size 36.

Extra Long for Tall Men
Shirts 2 inches longer in sleeves, Drawers 2 inches longer in legs than in regular sizes.
29L14—Shirts \$1.25
29L15—Drawers 1.25
Three Shirts or Drawers 3.57
Sizes: Shirts, 34 to 49 inch chest, Drawers, 30 to 44 inch waist.
Weight: Shirts, 18 ounces for size 40, Drawers, 14 ounces for size 36.

Men's Union Suit
29L213—Union Suit \$1.83
Three suits 5.22
Sizes, 34 to 48 inch chest.
Weight, per suit, 25 ounces for size 40.



Extra Heavy All Wool Natural Gray

Extra Heavy All Wool Underwear for Men. Big warm, comfortable garments for cold weather. If you wish extra warm underwear for extreme cold weather we know that these garments will be more than satisfactory. Flat knit from specially selected wool. Slightly flannel on the inside, making them very soft and comfortable.

Men's Shirts and Drawers
29L110—Shirts \$1.63
29L111—Drawers 1.63
Three Shirts or Drawers 4.65

Sizes: Shirts, 34 to 48 inch chest, Drawers, 30 to 48 inch waist.
Weight: Shirts, 22 ounces for size 40, Drawers, 17 ounces for size 36.

Men's Union Suits
29L212—Union Suit \$2.98
Three suits 8.50
for 8.50
Sizes, 34 to 48 inch chest.
Weight, per suit, 31 ounces for size 40. State size wanted.



Medium Heavy Natural Gray

Medium Heavy Underwear for Men. Plain knit from selected wool and fine cotton. This makes a garment that will give excellent service and will not shrink when washed. About one-third finest wool and two-thirds combed cotton. Color, Natural Gray.

Men's Shirts and Drawers
Single Breasted Shirts
29L2—Shirts \$0.79
29L3—Drawers79
Three Shirts or Drawers 2.25

Sizes: Shirts, 34 to 50 inch chest, Drawers, 30 to 50 inch waist.
Weight: Shirts, 16 ounces for size 40, Drawers, 13 ounces for size 36.

Double Breasted Shirts
29L62—Shirts \$1.00
29L63—Drawers79

Sizes: Shirts, 34 to 50 inch chest, Drawers, 30 to 50 inch waist.
Weight: Shirts, 19 ounces for size 40, Drawers, 13 ounces for size 36.

Men's Union Suit
29L207—Union Suit \$1.39
Three Suits 3.97
for 3.97
Sizes, 34 to 48 inch chest.
Weight, per suit, 27 ounces for size 40.



All Wool Buckskin Plush

A \$2.50 Quality for \$1.79

Extra Heavy Weight Shirts and Drawers for Men. Plain knit. 100 per cent wool. Heavy fleece lining. Very warm and comfortable. Will not irritate the skin. Extra well made throughout.

Shirts—Bound around neck and front with silk mohair tape. Ribbed cuffs and tall. Three pearl button front.
Drawers—Ankle length. Ribbed cuffs at ankle. Self facing. Suspender loops. Tied back. Three pearl button front. Usual retail price is \$2.50 per garment.

Single Breasted Shirts
29L32—Shirts \$1.79
29L33—Drawers 1.79
Three Shirts or Drawers 5.10
Color, Light Shade of Tan.

Sizes: Shirts, 34 to 46 inch chest, Drawers, 30 to 44 inch waist.
Weight: Shirts, 17 ounces for size 40, Drawers, 15 ounces for size 36.



Dr. Wright's Fleece Lined

This is the well known Dr. Wright's Sanitary Health Fleece Lined Underwear for Men. Is plain knit. Has fine selected cotton on the outside, and heavy soft wool fleecing on the inside. Is exceptionally well made, and a very warm garment. Contains about 25 per cent finest wool, balance combed cotton.

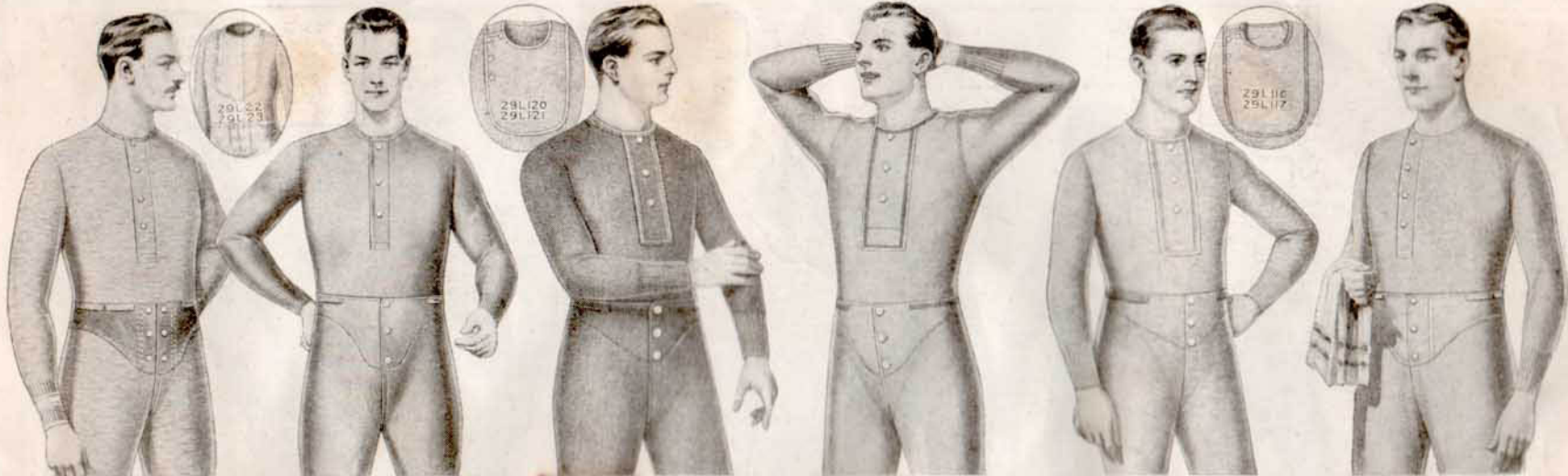
Men's Suits and Drawers
29L86—Shirts \$1.19
29L87—Drawers 1.19
Three Shirts or Drawers 3.40

Color, Gray Mottled.
Sizes: Shirts, 34 to 44 inch chest, Drawers, 30 to 44 inch waist.
Weight: Shirts, 17 ounces for size 40, Drawers, 13 ounces for size 36.

Men's Union Suits
29L242—Union Suit \$1.69
Three suits 4.82

Sizes, 34 to 44 inch chest. Weight, per suit, 25 ounces for size 40. State size wanted.





\$1.94

Non-Shrinkable Underwear

Our Best Non-Shrinkable Shirts and Drawers for Men. Plain knit. Contain over two-thirds extra select wool. Positively will not shrink. Color, Natural Gray.

Drawers—Ankle length. Ribbed cuffs at ankle. Gray flannel facing, with double row of pearl buttons for adjusting.

- Single Breasted Shirts**
- 29L20—Shirts \$1.94
29L21—Drawers 1.94
Three Shirts or Drawers 5.55

Sizes
Shirts, 34 to 46 inch chest.
Drawers, 30 to 44 inch waist.
Weight
Shirt, 15 ounces for size 40.
Drawers, 15 ounces for size 36.

Double Breasted Shirts and Double Seated Drawers

- 29L22—Shirts \$2.45
29L23—Drawers 2.15
Three Shirts or Drawers 6.13

Sizes
Shirts, 34 to 46 inch chest.
Drawers, 30 to 44 inch waist.
Weight
Shirts, 19 ounces for size 40.
Drawers, 17 ounces for size 36.

\$1.00

All Wool Scarlet or Red

Strictly All Wool Red Shirts and Drawers for Men. Plain knit, from good quality wool. Made in the best possible manner. 100 per cent pure wool in medium-heavy weight. State size wanted.

Shirts—Mohair bound, neck and front. Ribbed cuffs and tail. Three pearl button front.

Drawers—Ankle length. Ribbed cuffs at ankle. Self facing with pearl buttons. Suspender loops. Tied back. To those desiring medium heavy, all red underwear, this is an exceptionally good value. Would sell at retail for at least \$1.50 a garment.

Single Breasted Shirts

- 29L46—Shirts \$1.00
29L47—Drawers 1.00
Three Shirts or Drawers 2.85

Sizes
Shirts, 34 to 46 inch chest.
Drawers, 30 to 46 inch waist.
Weight
Shirts, 16 ounces for size 40.
Drawers, 13 ounces for size 36.

\$1.98

Extra Weight All Wool Tan

This is Our Best Extra Heavy Weight, Cold-Proof, all Wool, Blizzard Underwear for Men. Made for the very coldest climates and severest winter weather. Plain knit in tan color from selected all wool. Color, medium shade of tan only. State size wanted.

Drawers—Ankle length. Double ribbed cuffs. Belt facing. Suspender loops.

Single Breasted Shirts

- 29L108—Shirts \$1.98
29L109—Drawers 1.98
Three Shirts or Drawers 5.65

Sizes
Shirts, 34 to 48 inch chest.
Drawers, 30 to 48 inch waist.
Weight
Shirts, 28 ounces for size 40.
Drawers, 21 ounces for size 36.

Double Breasted Shirts

- 29L120—Shirts \$2.59
29L121—Drawers 1.98

Sizes
Shirts, 34 to 48 inch chest.
Drawers, 30 to 48 inch waist.
Weight
Shirts, 29 ounces for size 40.
Drawers, 21 ounces for size 36.

89c

Tan Plush Extra Heavy

These are our Special Plush Back Shirts and Drawers for Men. Extra heavy weight. Plain knit from a mixture of about one-third selected wool and two-thirds fine cotton. Heavily fleece lined, which makes them very soft and warm garments. State size wanted.

Shirts—Single breasted. Box front, Mohair bound, neck and front. Ribbed cuffs and tail. Three pearl button front.

Drawers—Ankle length. Ribbed cuffs at ankle. Self facing with three pearl buttons. Suspender loops. Tied back.

These garments usually retail at \$1.25 each.

Single Breasted Shirts

- 29L98—Shirts \$0.89
29L99—Drawers89
Three Shirts or Drawers 2.54

Sizes
Shirts, 34 to 48 inch chest.
Drawers, 30 to 48 inch waist.
Weight
Shirts, 19 ounces for size 40.
Drawers, 16 ounces for size 36.

\$1.00

Extra Heavy Natural Gray

Extra Heavy Plain Knit Shirts and Drawers for Men. Garments specially designed for the men in the North and Northwest. Knitted from a mixture of about one-half wool and one-half cotton. Have a plush back or fleece lining.

Drawers—Ankle length. Ribbed cuffs at ankle. Self facing.

Single Breasted Shirts

- 29L100—Shirts \$1.00
29L101—Drawers 1.00
Three Shirts or Drawers 2.85

Sizes
Shirts, 34 to 48 inch chest.
Drawers, 30 to 48 inch waist.
Weight
Shirts, 19 ounces for size 40.
Drawers, 17 ounces for size 36.

Double Breasted Shirts

- 29L116—Shirts \$1.39
Three Shirts, Double Breasted 3.96
29L117—Drawers to match 1.00

Sizes
Shirts, 34 to 48 inch chest.
Drawers, 30 to 48 inch waist.
Weight
Shirts, 23 ounces for size 40.
Drawers, 15 ounces for size 36.

\$1.39

Heavy Weight Non-Shrinkable

Non-shrinkable Shirts and Drawers for Men. Plain knit from fine wool and selected cotton. Contains over 70 per cent wool. Just enough cotton added to give extra wear and prevent shrinking.

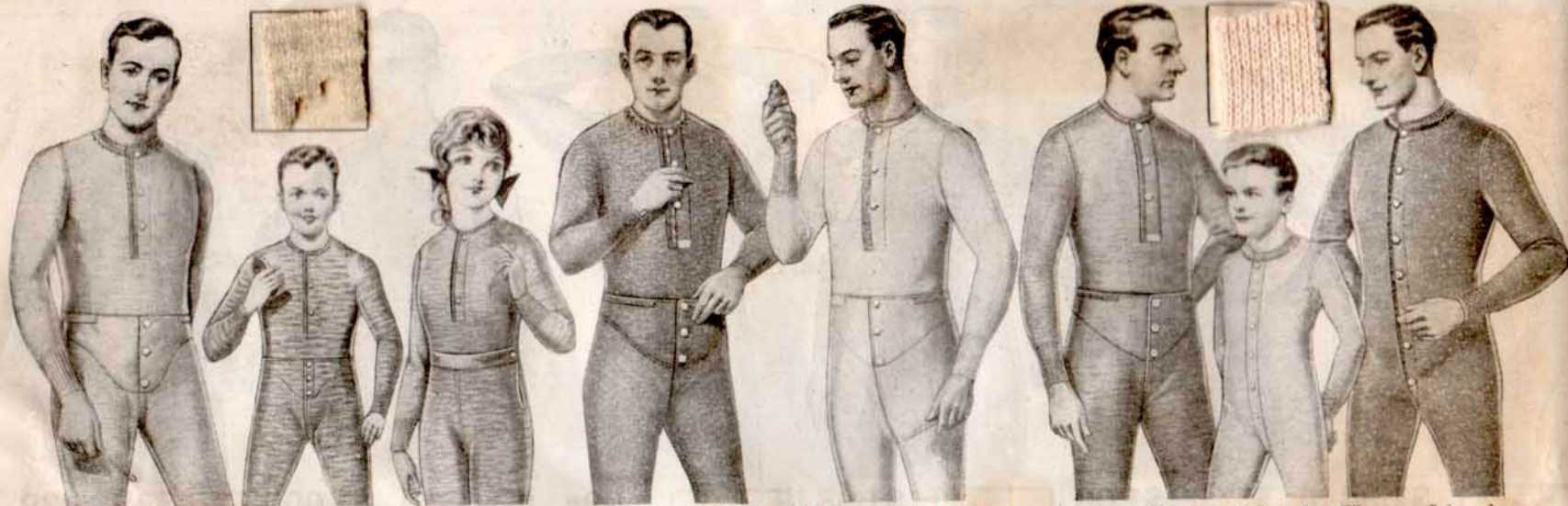
Shirts—English single breasted front with no binding. Ribbed cuffs and tail. Four pearl buttons on front. State size wanted.

Drawers—Ankle length. Ribbed cuffs at ankle. Flannel facing. Pearl button front. Suspender loops. Tied back. Usually retails for \$1.75 to \$2.00 a garment.

Single Breasted Shirts

- 29L70—Shirts \$1.39
29L71—Drawers 1.39
Three Shirts or Drawers 3.97

Color, Tan only
Sizes
Shirts, 34 to 46 inch chest.
Drawers, 30 to 44 inch waist.
Weight
Shirts, 17 ounces for size 40.
Drawers, 15 ounces for size 36.



Men's All Wool Natural Gray

Good Quality All Wool Underwear. Plain knit from extra select Natural Gray Wool. Medium heavy weight. Contains 100 per cent pure wool. Very warm and comfortable garments.

Men's Shirts and Drawers

29L24—Shirts	Single Breasted Shirts	\$1.65
29L25—Drawers		1.65
Three Shirts or Drawers		4.70
Sizes—Shirts, 34 to 50 inch chest. Drawers, 30 to 48 inch waist.		
Weight—Shirts, 16 ounces for size 40. Drawers, 14 ounces for size 36.		
Double Breasted Shirts		
29L28—Shirts		\$1.87
29L29—Drawers		1.65
Sizes—Shirts, 34 to 50 inch chest. Drawers, 30 to 48 inch waist.		
Weight—Shirts, 18 ounces for size 40. Drawers, 14 ounces for size 36.		
State size wanted		

Boys' Shirts and Drawers

To the fabric from which the men's shirts and drawers are made, we have added about 25 per cent combed cotton, which will prevent the garments shrinking when washed.

29L308—Shirts		\$0.98
29L309—Drawers		.98
Three Shirts or Drawers		2.80
For ages 6 to 16 years.		
Weight, Shirts or Drawers, 7 ounces for age 10.		
State size wanted.		

Girls' Vests and Drawers

Made of the same material as the boys' shirts and drawers.

Age	Each	Age	Each
2 years	\$0.54	10 years	\$0.86
4 years	.62	12 years	.94
6 years	.70	14 years	1.02
8 years	.78	16 years	1.10
State age wanted. Average weight, per garment, 7 ounces.			

A 75c Retail Value Brown Fleece for 49c

Men's Heavy Weight, Fleece Lined Underwear for winter. These garments are made especially for us, and you cannot get them anywhere else. Are made of fine cotton in chocolate brown color, and have a heavy, pure white fleecing on the inside. We have found nothing in men's underwear that will give equal service for the price.

Shirts—Single breasted. Double ribbed cuffs. Mohair bound neck and front. Three pearl buttons.

Drawers—Angle length. Double ribbed cuffs. Self facing. Suspender loops.

29L82—Shirts	\$0.49
29L83—Drawers	.49
Three Shirts or Drawers	1.40

Sizes
Shirts, 34 to 50 inch chest.
Drawers, 30 to 48 inch waist.
Weight
Shirts, 19 ounces for size 40.
Drawers, 15 ounces for size 36.
State size wanted.

Per
Garment

49c



Heavy White Fleece Lined

Heavy Weight, Fleece Lined Underwear for Men. These garments are made especially for us. Have a very heavy fleecing on the inside. Garments are finished in the best possible manner, and at our price you are getting a genuine bargain.

Shirts—Single breasted. Mohair bound neck and front. Double ribbed cuffs. Three pearl buttons.

Drawers—Angle length. Double ribbed cuffs. Self facing. Suspender loops.

29L84—Shirts	\$0.49
29L85—Drawers	.49
Three Shirts or Drawers	1.40

Sizes
Shirts, 34 to 40 inch chest.
Drawers, 30 to 44 inch waist.
Weight
Shirts, 16 ounces for size 40.
Drawers, 12 ounces for size 36.
State size wanted.

Per
Garment

49c



Heavy Weight Fleece Lined

Heavy, Plain Knit Cotton, Fleece Lined Underwear for Men. We are offering again this season, our special standard made, fleece lined garments at these bargain prices. Made of heavy weight, selected quality cotton.

Men's Shirts and Drawers

29L74—Shirts	Single Breasted Shirts	\$0.39
29L75—Drawers		.39
Three Shirts or Drawers		1.11
Color, Light Shade of Tan, known as Jaeger.		
Sizes: Shirts, 34 to 50 inch chest. Drawers, 30 to 50 inch waist.		
Weight: Shirts, 17 ounces for size 40. Drawers, 14 ounces for size 36.		

Double Breasted Shirts

29L94—Shirts		\$0.48
Three Shirts for		1.37
29L95—Drawers		.39
Three Drawers for		1.11
Sizes: Shirts, 34 to 50 inch chest. Drawers, 30 to 50 inch waist.		
Weight: Shirts, 20 ounces for size 40. Drawers, 14 ounces for size 36.		

Men's Union Suits

Have collarette neck. Long sleeves. Ankle length. Double ribbed cuffs on sleeves and at ankles. Closed crotch. Good pearl buttons.

29L239—Union Suits	\$0.83
Three Suits for	2.37
Sizes, 34 to 44 inch chest.	
Weight, per suit, 26 ounces for size 40.	

Boys' Union Suits

Open all the way down the front. Collarette neck. Double ribbed cuffs on sleeves and at ankles. Closed crotch. Fine pearl buttons. This union suit is of a quality that usually retails for 65c per garment.

29L335—Union Suits	\$0.49
Three Suits for	1.40
Ages, 6 to 16 years. State age wanted.	
Weight, per suit, 14 ounces for age 14.	



Extra Heavy Full Fashioned

Jersey ribbed knit from extra fine wool with enough cotton to give extra wear to the garment. About two-thirds wool. Full fashioned throughout. Exceptionally well made and close fitting.

Men's Shirts and Drawers

- 29L152—Shirts \$2.19
- 29L153—Drawers 2.19
- Three Shirts or Drawers 6.25

Color, Light Blue, mottled.

Sizes

Shirts, 34 to 46 inch chest.

Drawers, 30 to 44 inch waist.

Weight

Shirts, 19 ounces for size 40.

Drawers, 17 ounces for size 36.

Men's Union Suits

- 29L217—Union Suits \$ 3.59
- Three Suits for 10.20

Sizes, 34 to 46 inch chest.

Weight, per suit, 29 ounces for size 40.

State size wanted.



Per Garment \$1.00



Heavy Weight Natural Gray

One of Our Best Offers in Mixed Wool and Cotton Ribbed Underwear. This is the same garment usually sold as all wool. Contains about two-thirds fine wool and one-third combed cotton to make it wear better and prevent shrinking when washed. Is exceptionally well made throughout.

Men's Shirts and Drawers

- 29L136—Shirts \$1.00
- 29L137—Drawers 1.00
- Three Shirts or Drawers 2.85

Sizes

Shirts, 34 to 50 inch chest.

Drawers, 30 to 50 inch waist.

Weight

Shirts, 16 ounces for size 40.

Drawers, 14 ounces for size 36.

Men's Union Suits

- 29L196—Union Suits \$1.50
- Three Suits for 4.25

Sizes, 34 to 44 inch chest.

Weight, per suit, 25 ounces for size 40.

State size wanted.

Special Heavy Ribbed Cotton

This special Heavy Weight Ribbed Cotton Underwear for Men is made especially for us from selected cotton, and we are sure they will give excellent satisfaction. Slightly heavier on the inside and are soft, comfortable wearing garments.

Men's Shirts and Drawers

Color, Gray.

- 29L124—Shirts \$0.30
- 29L125—Drawers30
- Three Shirts or Drawers 1.11

Color, Cream.

- 29L128—Shirts \$0.30
- 29L129—Drawers30
- Three Shirts or Drawers 1.11

Sizes

Shirts, 34 to 44 inch chest.

Drawers, 30 to 44 inch waist.

Weight

Shirts, 15 ounces for size 40.

Drawers, 12 ounces for size 36.

Men's Union Suits

Color, Natural Gray.

- 29L198—Union Suits \$0.75
- Three Suits for 2.15

Color, Cream.

- 29L199—Union Suits \$0.75
- Three Suits for 2.15

Sizes, 34 to 46 inch chest.

Weight, per suit, 21 ounces for size 40.

State size wanted.



Extra Heavy Nearly All Wool

Heavy Weight Ribbed Nearly All Wool Underwear for Men. This is one of our best offerings. Is especially good for the active working man. For hard wear this will give excellent service. Is Jersey ribbed knit and contains about 90 per cent of selected wool with just a small per cent of cotton for extra wear and to prevent shrinking.

Men's Shirts and Drawers

- 29L144—Shirts \$1.39
- 29L145—Drawers 1.39
- Three Shirts or Drawers 3.97

Color, Natural Gray only.

Sizes

Shirts, 34 to 48 inch chest.

Drawers, 30 to 48 inch waist.

Weight

Shirts, 19 ounces for size 40.

Drawers, 15 ounces for size 36.

Men's Union Suits

- 29L227—Union Suits \$2.19
- Three Union Suits for \$6.25

Sizes, 34 to 46 inch chest.

Weight, per suit, 20 ounces for size 40.

State size wanted.



Heavy Weight All Wool

These are two of our Leaders in All Wool, Heavy Weight, Jersey Ribbed Underwear for Men. Warm and elastic, especially suitable for active men.

Men's Shirts and Drawers

- 29L140—Shirts \$1.39
- 29L141—Drawers 1.39
- Three Shirts or Drawers 3.97

Sizes

Shirts, 34 to 48 inch chest.

Drawers, 30 to 48 inch waist.

Weight

Shirts, 18 ounces for size 40.

Drawers, 17 ounces for size 36.

Men's Union Suits

- 29L229—Union Suits \$2.19
- Three Suits for 6.25

Color, Brown.

Sizes, 34 to 46 inch chest measure.

Weight, per suit, 28 ounces for size 40.

State size wanted.





Heavy Weight Jersey Ribbed

Heavy Weight Jersey Ribbed Underwear for Men. We have these garments made especially for us. They contain about 75 per cent of best selected Australian wool and 25 per cent fine cotton, splendid garments in every way.

Men's Shirts and Drawers
 29L164—Shirts \$2-39
 29L165—Drawers 2-39
 Three Shirts or Drawers 6-51

Color, Natural Gray.
 Sizes
 Shirts, 34 to 50 inch chest.
 Drawers, 30 to 50 inch waist.
 Weight
 Shirts, 16 ounces for size 40.
 Drawers, 14 ounces for size 36.

Men's Union Suits

29L214—Union Suits \$4.49
 Three Suits for 12.80
 Sizes, 34 to 50 inches chest.
 Weight, per suit, 26 ounces for size 40.
 State size wanted.



\$1.50 Heavy Weight Suit \$1.00

Our Special Heavy Weight, All Cotton, Jersey Ribbed Union Suits for Men. Made of selected combed cotton. Are lightly fleeced on the inside. Very serviceable and warm. Collarette neck. Long sleeves. Ankle-length. Ribbed cuffs on sleeves and at ankles. Closed crotch. Good pearl buttons. These are very fine suits for the price and are made especially for us. \$1.50 retail values.

Men's Union Suits

Color, Silver Gray.
 29L190—Union Suit \$1.00
 Three Suits for 2.85
 Color, Cream.
 29L192—Union Suits 1.00
 Three Suits for 2.85
 Sizes, 34 to 48 inch chest.
 Weight, per suit 22 ounces for size 40.
 State size wanted.



Medium Heavy Mercerized and Wool

Men's Jersey Ribbed Underwear, knit from a combination 50 per cent of Wool and 50 per cent Mercerized Cotton. Has the appearance of the finest silk and wool.

Men's Shirts and Drawers

29L168—Shirts \$1.98
 29L169—Drawers 1.98
 Three Shirts or Drawers 5-65

Color, Light Blue mottled.
 Sizes
 Shirts, 34 to 44 inch chest.
 Drawers, 30 to 44 inch waist.
 Weight
 Shirts, 14 ounces for size 40.
 Drawers, 12 ounces for size 36.

Men's Union Suits

29L224—Union Suits \$3.49
 Three Suits for 9.95
 Sizes, 34 to 46 inch chest.
 Weight, per suit, for size 40, 21 ounces.
 State size wanted.



Medium Heavy Jersey Ribbed

Elastic Ribbed Knit Wool and Cotton Underwear for Men. Contain nearly two-thirds of best selected wool, the balance, combed cotton, which adds to their wearing qualities, and prevents shrinking. Cream color. They are closely knit, which insures extra warmth, especially suitable for severe winter weather.

Men's Shirts and Drawers

29L158—Shirts \$1.49
 29L159—Drawers 1.49
 Three Shirts or Drawers 4.25

Sizes
 Shirts, 34 to 46 inch chest.
 Drawers, 30 to 44 inch waist.
 Weight
 Shirts, 15 ounces for size 40.
 Drawers, 15 ounces for size 36.

Men's Union Suits

29L208—Union Suits \$2.19
 Three Suits for 6.25
 Sizes, 34 to 44 inch chest.
 Weight, per suit, 26 ounces for size 40.
 State size wanted.



Special Interlock Fine Cotton

Special Interlock Fine Cotton Underwear for Men. These garments are made on the new Interlock machine. The cloth is very elastic and knit very much closer than on the ordinary rib-knitting machine. You get warmth, without weight.

Men's Shirts and Drawers

29L130—Shirts \$0.89
 29L131—Drawers89
 Three Shirts or Drawers 2.55

Color, Cream only.
 Sizes
 Shirts, 34 to 46 inch chest.
 Drawers, 30 to 44 inch waist.
 Weight
 Shirts, 11 ounces for size 40.
 Drawers, 9 ounces for size 36.

Men's Union Suits

29L194—Union Suits \$1.19
 Three Suits for 3.40
 Sizes, 34 to 46 inch chest.
 Weight, 18 ounces per suit for size 40.
 State size wanted.





Heavy Egyptian Cotton



Men's Extra Heavy Combed Egyptian Cotton Ribbed Underwear for Winter Wear. Made especially for those who need elastic, warm, cotton underwear for strenuous work. Workmanship and finish are of the best. Elastic ribbed knit.

Men's Shirts and Drawers

29L132—Shirts \$0.79
29L133—Drawers79
Three Shirts or Drawers 2.25
Color, Cream only.

Shirts, 34 to 48 inch chest.
Drawers, 30 to 48 inch waist.

Weight, per suit, 25 ounces for size 40.

Men's Union Suits

29L184—Union Suits \$1.49
Three Suits for 4.25
Color, Cream only.

Sizes, 34 to 46 inch chest.
Weight, per suit, 25 ounces for size 40.

State size wanted.



Very Heavy Half Wool



Our Heavy Weight Underwear for Men and Boys. Elastic rib knit, very fine quality mixture of Australian wool and selected cotton. Contains over 50 per cent wool. This garment is heavy enough for severe winter wear, and is soft and comfortable. Closed crotch.

Men's Union Suits

29L211—Union Suits \$3.45
Three Suits for 9.80
Color, Natural Gray.

Size, 34 to 50 inch chest.
Weight, per suit, 25 ounces for size 40. State size wanted.

Boys' Union Suits

29L360—Union Suits \$2.19
Three Suits for 6.25
Ages, 6 to 14 years.

Youths' Union Suits

29L361—Union Suits \$2.79
Three Suits for 7.95
Ages, 16 and 18 years.

Color, Natural Gray.
Weight, per suit, 16 ounces for age 14. State size wanted.

State Size Wanted for Men



Heavy Weight Ribbed Fleece

Heavy weight, Fleece Lined, Ribbed Knit Underwear for Men. This is a big, soft and closely woven garment, that will give excellent service, and being close fitting is most comfortable to wear. Well made, from good cotton, in a silver gray color.

Men's Shirts and Drawers

29L122—Shirts \$0.48
29L123—Drawers48
Three Shirts or Drawers 1.37
Sizes: Shirts, 34 to 46 inch chest.
Drawers, 30 to 44 inch waist.

Weight: Shirts, 16 ounces for size 40.
Drawers, 11 ounces for size 36.

Men's Union Suits

29L238—Union Suits \$0.83
Three Suits for 2.37
Sizes, 34 to 44 inch chest.
Weight, per suit, 22 ounces for size 40.

Boys' Union Suits

29L340—Union Suits \$0.49
Three Suits for 1.40
Ages, 6 to 16 years.

Weight, per suit, 14 ounces for age 14.

Girls' Vests and Drawers

29L2360—Vests
29L2361—Drawers
Long Sleeves, Ankle Length. Drop Seat.

Age	Each	Age	Each
2 years	24c	10 years	33c
4 years	24c	12 years	36c
6 years	27c	14 years	39c
8 years	30c	16 years	42c

Average weight, per garment, 9 ounces.

State Age Wanted for Boys and Girls



Heavy Weight Nearly All Wool



Heavy Weight

Knit from a small percentage of extra fine wool, combined with best selected cotton. Closed crotch. Weight, per suit, 23 ounces for size 40. Color, Natural Gray.

For Average Men

29L202—Union Suit \$2.00
Three Suits for 5.70
Sizes, 34 to 50 inch chest.

For Tall Men

Made in the same way and of the same material as our No. 29L202 but two and one-half inches longer in the sleeves and three inches longer in the legs.

29L203—Union Suits \$2.19
Three Suits for 6.25
Sizes, 34 to 50 inch chest.

For Stout Men

Same material as our No. 29L202, except that the sleeves are two and one-half inches shorter, and the legs three inches shorter.

29L204—Union Suits \$2.19
Three Suits for 6.25
Sizes, 36 to 50 inch chest.

Drop Seat

For Average Men.
Made in the same way as 29L202, but has a drop seat, fastened with three pearl buttons.

29L205—Union Suits \$2.19
Three Suits for 6.25
Sizes, 34 to 50 inch chest.

Our Extra Heavy Weight, Nearly All Wool Union Suit for Men. Elastic ribbed knit. Has more than 25 per cent of selected wool, balance fine cotton. This is a heavy weight suit for severe cold weather. Soft and warm.
Color, Cream White.

Men's Shirts and Drawers

29L148—Shirts \$1.30
29L149—Drawers 1.30
Three Shirts or Drawers 3.97
Color, Cream White.

Shirts, 34 to 48 inch chest.
Drawers, 30 to 48 inch waist.

Weight, per suit, 25 ounces for size 40.

Drawers, 17 ounces for size 40.

Men's Union Suits

29L226—Union Suits \$2.19
Three Suits for 6.25
Sizes, 34 to 48 inch chest.

Weight, per suit, 26 ounces for size 40. State size wanted.

State size wanted.

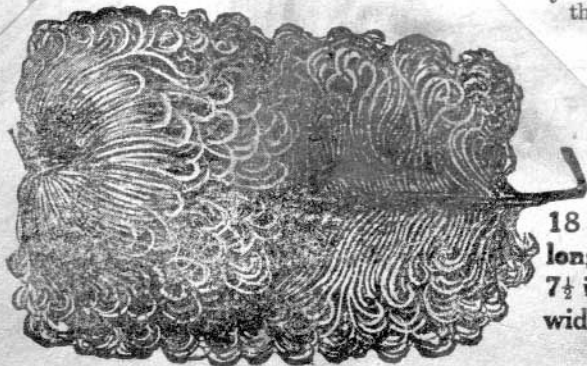
Our Fashion Department has an up-to-the-minute display of styles

This

ne,

This Genuine French Broadhead Wide Ostrich Plume is yours for only \$1.98. Of course, you couldn't buy it for less than \$3.00 elsewhere, but a fortunate purchase makes it possible for us to offer you this splendid plume at this ridiculously low price. A few of these plumes will trim any hat in a way that is sure to call forth the admiration of your friends. Include this bargain in your order.

Large
Broadhead
French
Plume



Plume is fine male stock, dyed by French method. 18 inches long and 7½ inches wide. You cannot overlook this rare bargain, even if you do not intend to use this plume at once. These plumes will give you very good wear and can be changed almost indefinitely. Retail value, \$3.00. 2Y445—Our Special Price, Each, \$1.98. 3 for \$5.25.

18 inches
long;
7½ inches
wide

Lighting Fixtures

This new book of fixtures with hundreds of illustrations, sent free upon request.



We show you how to put up your own fixtures. New and up-to-date designs. You save from 10 to 50%. We guarantee satisfaction.

Plumbing Book

Every plumbing necessity at a big saving to you. We loan you the tools to make installation easy. Write for this book and get our free expert estimates.



We save you from one-fifth to one-half

Heating Book

Make your home cozy and comfortable with a modern heating plant. Let us estimate on the complete outfit. We will show you how to install it easily and quickly, and save money.



Write for the books you need—they are free

PUT A
TWO-CENT
POSTAGE
STAMP
HERE

CHICAGO

MONTGOMERY WARD & CO.
CHICAGO

NAME

POSTOFFICE

R. F. D. No.

Box

STATE

STREET ADDRESS

PUT A
TWO-CENT
POSTAGE
STAMP
HERE

CHICAGO

MONTGOMERY WARD & CO.
CHICAGO

NAME

POSTOFFICE

R. F. D. No.

Box

STATE

STREET ADDRESS

**We have priced
These two attractive
Styles so low that
You will immediately
Say:**

**Here's a
Real
Bargain!**

**A Great Value
This Wool
Velour Coat \$1498**
Priced for this sale at

- 10M6001—Navy Blue
- 10M6002—Burgundy
- 10M6004—Brown
- 10M6008—Oxford Gray

Sizes, 34 to 46.

Length in back, all sizes, 48 inches.

Shipping weight, 5 lbs. 3 oz.

Warm, stylish coat of Velour, a splendid quality material about two-thirds wool. Newest model in plaited back style with arrow-head finish. Large collar of good quality Kit Coney. Wide all around button trimmed belt. Unlined. All seams bound. Mention size.



**Dressy, Silk
Seal Plush Coat \$2875**
Midsummer Sale Price

10M2162—Black only.

Women's sizes, 34 to 46.

Misses' sizes, 14 to 20 years.

Length in back, all sizes, 48 inches.

Shipping weight, 6 lbs. 7 oz.

Dressy fur trimmed coat for women or misses. Made of handsome pile Seal Plush. The large collar, deep cuffs and band at lower part of model are made of Kit Coney, a dense soft short-haired fur of a becoming Taupe color. Convenient pockets. All around self-fabric belt, trimmed with plush covered buttons. Similar buttons close coat. Lined throughout with fine quality satin venetian. This rich, elegant coat is one of the season's most popular models. It is delightfully warm as well as new and smart, and will give you genuine satisfaction. Mention size.



10M6001
10M6002
10M6004
10M6008

10M2162

Montgomery Ward & Co.
[Satisfaction Guaranteed or Your Money Back]

CHICAGO

Chicago Kansas City Fort Worth Portland, Ore.

Sale Price

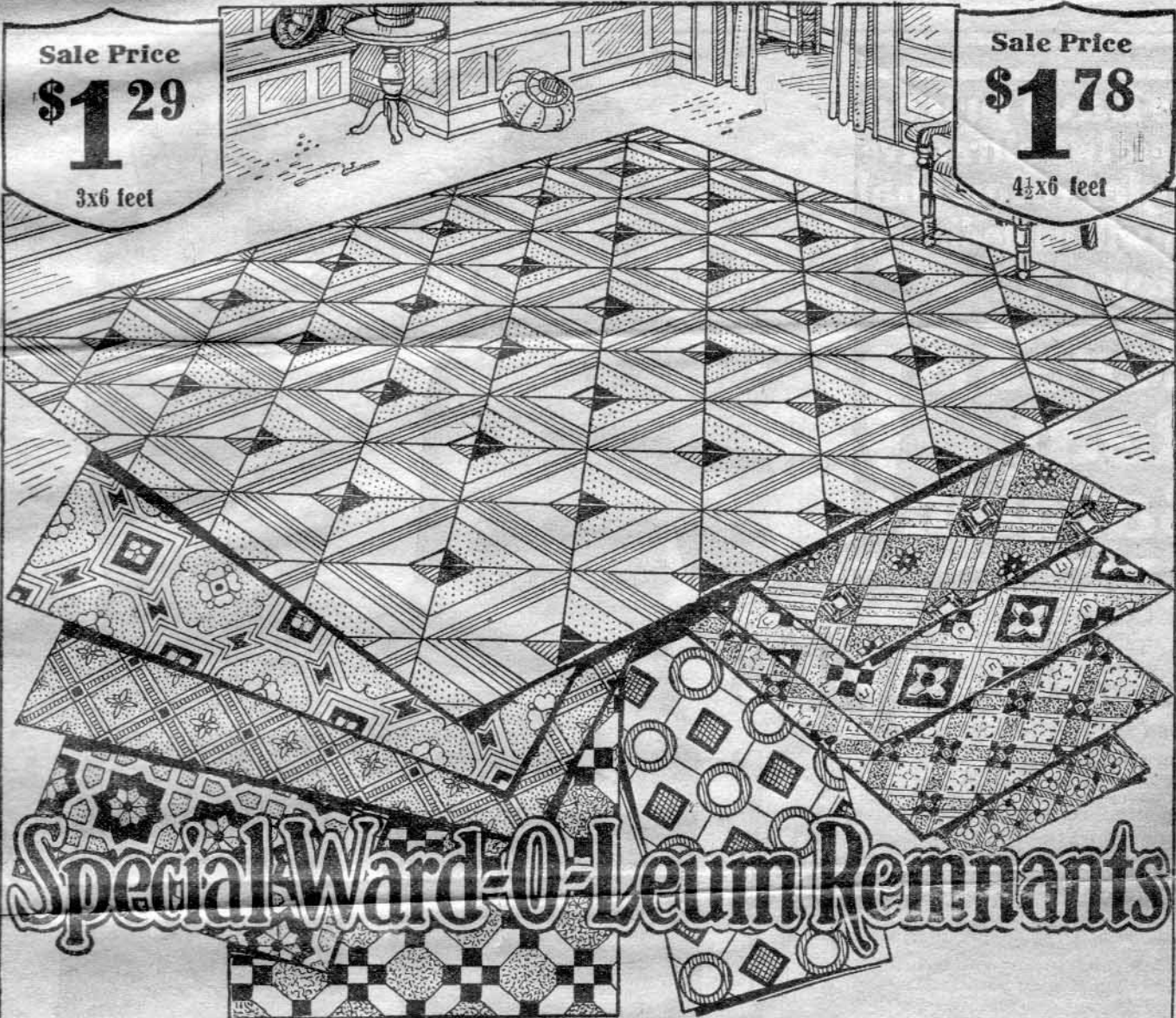
\$1.29

3x6 feet

Sale Price

\$1.78

4½x6 feet



Special Ward-O-Leum Remnants

Five Peerless Floor-Covering Bargains

WE have far outdone anything we have ever attempted in value-giving when we offer you these Ward-O-Leum remnants in five popular sizes that can be used to advantage in the average room. We cannot furnish any particular pattern or color, as these are remnants that accumulate in our stock room. They are all, however, printed in good colors and just as attractive as the ones illustrated. They are very effective when placed in the center of the floor and used as a rug. At these low prices, they will cost you just a fraction of what a Ward-O-Leum rug of the same size would sell for.

Number	Size	Shipping Weight, About	Special Sale Price
172M85	3x6 feet	7¼ pounds	\$1.29
172M86	4½x6 feet	11 pounds	1.78
172M87	6x6 feet	14¼ pounds	2.39
172M88	6x7½ feet	18 pounds	2.89
172M89	6x9 feet	25 pounds	3.78

Montgomery Ward Co.
Satisfaction Guaranteed or Your Money Back

Chicago

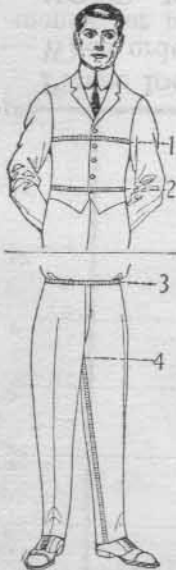
Kansas City

Fort Worth

Portland, Ore.

HOW TO MEASURE

Men's and Boys' Suits



Height—Stand against a wall and have someone hold a ruler or a hard covered book against the wall at the top of your head. Mark the wall where the lower edge of the ruler or book touches it and measure the distance from that point to the floor to get your exact height. Always measure your height with your shoes on.

Weight—Don't guess, nor give what you weighed some time ago. Weigh yourself now, on accurate scales.

Chest—Take off coat, drop arms to side, stand natural, have someone measure you all around the body (No. 1 in cut), over shoulder blades and over your vest.

Waist—Have your waist measured all around body at top of hip bones, two ways; over vest (No. 2 in cut), and under vest over trousers (No. 3 in cut). Send both measurements.

Inseam—Measurement in inches from high in crotch to bottom heel seam of shoe (No. 4 in cut).

Sleeve—Put on coat, raise arm to level of shoulder and bend forearm slightly; measure from center seam at middle of back to shoulder seam, then to point of elbow, and then to wrist joint. Send all three measurements.

Give actual measurements. Don't make allowances—we shall take care of that. Mention any particular trouble you may have experienced in getting suits to fit.

Always mention first and second choice, it will save time and trouble in case we happen to be out of the suit you order.

Men's and Boys' Overcoats and Coats

Overcoats, Fur and Fur Lined Coats, Rubber Coats, Cravenettes and Slip-ons—Give chest measure in inches taken over vest as for suit. (No. 1 in cut.)

Sheep and Blanket Lined Work Coats and Mackinaws—Give chest measure in inches taken over vest as for suit (No. 1 in cut). Made to wear without under-coat and be comfortably loose. If desired tight, order smaller. If to be worn over suit or sweater coat, order larger.

Men's Miscellaneous

Bath Robes—Give chest measure in inches.

Collars—Give neck measure in inches.

Night Shirts—Give neck measure in inches.

Pajamas—Give chest measure in inches.

Shirts—Give neck measure in inches.

Sweater Coats—Order two inches larger than chest measure taken over vest.

Men's Underwear

Shirts—Give chest measure in inches.

Drawers—Give waist measure in inches.

Union Suits—Give chest measure in inches.

Men's and Young Men's Trousers

Dress Trousers, Work Pants, and Overalls—Give waist measure in inches (No. 3 in cut). Inseam measure in inches (No. 4 in cut). When ordering cuff bottom trousers, inseam measurement should be 1 to 1½ inches shorter than for plain bottoms.

Boys' and Youths' Miscellaneous

Blouses—Order size by giving age. State whether large or small for his age.

Shirts—Give neck measure in inches.

Collars—Give neck measure in inches.

Night Shirts—State age and whether large or small for his age.

Pajamas—State age and whether large or small for his age.

Sweater Coats and Jerseys—Chest measure in inches taken over vest or blouse.

Junior Sweater Coats and Jerseys—State age and whether large or small for his age.

Boys' Brownie Overalls—To be worn short—shoe-top length. State age and whether large or small for age.

Hosiery Sizes

If you know your shoe size, you can always determine your correct stocking size from the table below. The upper line in each table shows the shoe size; the lower line shows the stocking size that should be worn with that shoe.

Scale of Sizes:

Men

Size of Shoe.....	5½-6	6½-7	7½-8	8½-9	9½-10-10½	11
Size of Sock.....	9½	10	10½	11	11½	12

Women

Size of Shoe.....	1 to 2	2½ to 3½	4 to 5	5½ to 6	6½ to 7	7½ to 8
Size of Hose.....	8	8½	9	9½	10	10½

Infants and Children

Size of Shoe..	1½ to 2	2½ to 3½	4 to 5½	6 to 6½	7 to 7½	8 to 8½	9 to 10
Size of Hose..	4	4½	5	5½	6	6½	7
Size of Shoe.....	10 to 12	12½ to 2	2½ to 3½	4 to 4½	5 to 6	6½ to 7	
Size of Hose.....	7½	8	8½	9	9½	10	

About Shoe Measurements

Space on this blank does not permit of our showing a scale of shoe sizes, but if you do not know the size you need, you will find a complete scale of sizes on the introductory page to the shoe section of our large General Catalogue.

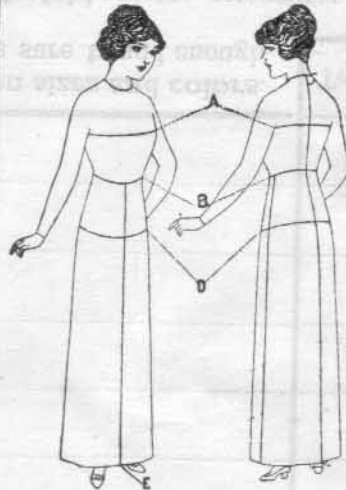
How to Measure Head for Correct Hat Size

Measure head, as illustrated. Compare measurement with table. Then give size. For example: If your head measures 22½ inches, you wear a 7½ hat.

Size Hat.....	6½	6¾	6¾	6¾	6¾	6¾	6¾
Head, inches.....	19½	19¾	20¼	20¾	21	21½	21¾
Size Hat.....	7	7½	7¾	7¾	7¾	7¾	7¾
Head, inches.....	22¼	22½	23	23½	23¾	24	24½



Women's and Misses' Coats, Suits, Dresses, Kimonos, etc.



It is very important to locate the natural waistline. This can best be done by tying a string or tape around the waist. Take all measurements over a tight fitting waist, making no allowances for seams, etc. Be sure your tape measure is correct.

For Coats, Suits, Waists, etc.

BUST MEASURE—Take your bust measure at A. (See figure.) Run the tape clear around body over fullest part of bust.

Skirt Measurement

WAIST—Take your waist measure at B. (See figure.) Run tape clear around waist at smallest part.

LENGTH—Front, measure at E. (See figure.) From center of waist in front, straight to bottom of skirt.

Women's Vests, Drawers and Union Suits, Gowns, Etc.

Vest—Give your bust measure in inches. Bust measure to be taken the same as for a waist. See A on figure above.

Drawers—Give your hip measure in inches. Hip measure to be taken over fullest part of hips. See D on figure above.

Union Suits—Give your bust measure in inches. Bust measure to be taken the same as for a waist. See A on figure above.

Women's Gowns—Give your bust measure in inches. See A on figure at top of page.

Princess Slips—Give your bust measure in inches. See A on figure at top of page.

Women's Skirts—Give length at E. See figure at top.

Women's Combinations—Give your bust measure in inches.

Women's Chemise Drawers—Give your bust measure in inches.

Child's or Misses' Muslin or Flannel Gowns, Princess Slips or Drawers—Give age in years and state if large or small for age.

Child's Skirts—Give age in years and state if large or small for age.

Misses' Skirts—Give length at E. See figure at top of page.

Women's Pajamas—Give your bust measure in inches.

Child's Vests and Pants—Give age in years and state if large or small for age.

Child's Union Suits—Give age in years and state if large or small for age.

Corset Sizes

How to Order Corsets

Under each illustration, you will find the measurements for that particular Corset. Read these very carefully. Where we state "Height of bust," we measure from the waistline to a point directly under the breast.

Back Lace Corsets

In ordering, give your Corset size, if you know it. If not, take your waist measure, tight over your dress. If you are ordering back lace corsets subtract four (4) inches. This allows for the lacing. Thus, if your waist measure is 25 inches, for back lace corset, order size 21.

Front Lace Corsets

Take your waist measure tight over your dress. If you are ordering front lace corsets, subtract two (2) inches. Thus, if your waist measure, over your dress, is 25 inches, for a front lace corset, order size 23.

Brassieres

Give your bust measure in inches.

Corset Covers

Give your bust measure in inches.

Child's Waists

Give child's age and state if large or small for age.

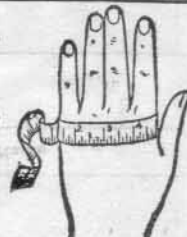
How to Measure for Baby Bonnets

To insure a perfect fit, measure in inches, as shown in illustration, from under the cheek around side of face, over forehead, and around to the other side under the cheek. Do not measure underneath the chin—only to the neck in a straight line. The number of inches indicates the size.



How to Measure for Gloves, Gauntlets or Mittens

If you do not know your glove size, place your hand flat on a table, and measure around the knuckles with a tape line or a narrow strip of paper, closely, but not too tightly. Do not include the thumb. The number of inches your hand measures, indicates your glove size. Misses' and Children's gloves should always be ordered by age, although they are marked in manufacturer's scale. State whether child is large for its age. Please mention this in your order, so that we can give you the proper size.



How to Measure for a Ring

Cut a narrow strip of paper, wrap it around the large joint of the finger on which you wish to wear the ring. With a pair of scissors cut the paper off so the ends just meet. Enclose this paper with your order or lay it on the scale above so that one end of the slip just covers the black line at the left end of the scale; the figure at the other end of the slip will be the ring size you need. If the end of the slip falls between two numbers, you should order a half-size larger than the smaller of the two numbers. If you order a plain wedding ring or an engraved band ring, ask for a size one-quarter larger than the measure indicates.

ALWAYS MENTION SIZE AND COLOR WHEN THIS INFORMATION IS ASKED FOR

Montgomery Ward & Co.

NEW YORK CHICAGO KANSAS CITY FORT WORTH PORTLAND

Chicago Avenue Bridge, CHICAGO

How to be Shipped

Our general Catalogue gives valuable information about the best way to ship goods.

Mark X in space below to show how you want goods sent.

<input type="checkbox"/> PARCEL POST	Be Sure to Send Enough Money for Postage	<input type="checkbox"/> INSURED PARCEL POST <small>For each \$25.00 value, add 5 cents to the postage.</small>
<input type="checkbox"/> EXPRESS	EXP. CO.	
<input type="checkbox"/> FREIGHT	R.R. CO.	

If there is no freight agent at your shipping point, you must send money to prepay the freight charges. If there is an agent, you can pay the freight when the shipment reaches you. It is only necessary to prepay when there is no agent at your station. The charges are the same.

WE GUARANTEE TO SATISFY YOU OR RETURN MONEY

Mrs., Miss or Mr. First Name Middle Initial Last Name

All Members of One Family Should Order under One Name

POST OFFICE

R. F. D. No.

STATE

P. O. BOX No.

STREET AND No.

SHIPPING POINT

COUNTY

DATE OF THIS ORDER

191

AMOUNT OF MONEY ENCLOSED

\$

Cts.

FROM WHAT CATALOGUE IS THIS ORDER TAKEN?

Do not forget to give Sizes and Colors

DO NOT Write Here	Number in Catalogue Make Figures Plainly	Quantity	SIZES, COLORS, ETC.	BE SURE TO GIVE THE NAME OF EACH ARTICLE WANTED	Price, Each or per Doz.	Extend Here	Please do not write in this space
1			Sizes, Colors, Etc.				
2			Sizes, Colors, Etc.				
3			Sizes, Colors, Etc.				
4			Sizes, Colors, Etc.				
5			Sizes, Colors, Etc.				
6			Sizes, Colors, Etc.				
7			Sizes, Colors, Etc.				
8			Sizes, Colors, Etc.				
9			Sizes, Colors, Etc.				
10			Sizes, Colors, Etc.				
11			Sizes, Colors, Etc.				
12			Sizes, Colors, Etc.				
Total							

Please look back and be sure that you have given sizes and colors. When ordering goods to be shipped by Parcel Post be sure to add enough money for postage.

NOTE: When ordering goods to be shipped by freight, please remember that the charges on a shipment of 95 lb. or less than for 100 lbs. therefore you can make the greatest saving by adding enough staple