

Realsilk
MEN'S SERVICE

Men's Sizes	SHOE WIDTH						
	AA	A	B	C	D	E	EE
SHOE SIZE (Length)	MEN'S SOCK SIZE						
5	9	9	9	9	9	9½	9½
5½	9	9	9	9½	9½	9½	9½
6	9	9½	9½	9½	9½	10	10
6½	9½	9½	10	10	10	10	10
7	10	10	10	10	10	10½	10½
7½	10	10	10½	10½	10½	11	11
8	10½	10½	10½	11	11	11	11
8½	10½	10½	11	11	11	11½	11½
9	10½	10½	11	11	11	11½	11½
9½	11	11	11	11	11½	11½	11½
10	11	11	11½	11½	11½	11½	11½
10½	11½	11½	12	12	12	12	12
11	11½	11½	12	12	12	12	13
11½	12	12	12	12	12½	12½	13
12	12½	12½	12½	12½	13	13	13

SIZE CHART—MEN'S SOCKS

LENGTH CHART				
... to use for insuring length satisfaction to those customers purchasing styles in which length service is available—20, 21, 23, 40, 41, 42, 43, 44, 45, 50, 53, and 59.				
For Sock Size	LENGTH TO BE SPECIFIED			
	"Regular" If under either		"Long" If over either	
	Height	Weight	Height	Weight
9	5' 6"	125 lbs.	5' 6"	125 lbs.
9½	5' 7"	130 lbs.	5' 7"	130 lbs.
10	5' 8"	135 lbs.	5' 8"	135 lbs.
10½	5' 9"	140 lbs.	5' 9"	140 lbs.
11	5' 10"	145 lbs.	5' 10"	145 lbs.
11½	5' 11"	150 lbs.	5' 11"	150 lbs.
12	6'	155 lbs.	6'	155 lbs.
12½	6' 1"	160 lbs.	6' 1"	160 lbs.
13	6' 2"	165 lbs.	6' 2"	165 lbs.

Length Service not available in Style 22 Toppers.

REAL SILK

Super Service Socks

...THE BEST WEARING
SOCKS IN AMERICA—

bar none!



NATIONALLY RECOGNIZED
FOR THEIR SMARTER STYLE
AND LONGER WEAR...

*Don't take our
word for it~*

These facts from impartial wear tests conducted by the Pittsburgh Testing Laboratory, covering more than one year and involving 226,138 test hours of wear show that Realsilk socks as against all others tested

**WEAR MUCH LONGER AND
COST MUCH LESS TO WEAR**



The data on these 2 pages are taken from our complete laboratory reports Nos. 162,772 and 173,009. They have been examined and found to be correct.

PITTSBURGH TESTING LABORATORY

W. A. Steinhilber
PRESIDENT

\$9.00 per suit

2

Pure Silk Pajamas

BY REAL SILK

STYLE No. 520

SIZES: 34, 36, 38, 40, 42, 44. COLORS: Burgundy, Admiral Blue.

A SMARTLY STYLED MEN'S PAJAMA
OF DURABLE, HEAVY, PURE SILK

This fabric of specially constructed non-loaded, Super Quality, Pure Silk, was selected to be more adaptable for men's wear. Coat style with self-colored buttons and cut full tailored for comfort as well as smartness. It is trimmed with a gold braid around the collar and cuffs and has three very roomy pockets, which are also set off by the gold trimming.

The trousers have a webbed drawstring with an insert of "Lastex" at the waistline, which allows for adjustability of size as well as comfort.

The garment comes in a two-length service, Regular and Extra Long. The Extra Long trousers are 3 inches longer than the Regular; the coat, 1 inch longer, and the sleeve 2 inches longer. If Extra Long is wanted specify Style S20XL.

TROUSER LENGTHS

(Measure down outside of leg from waist to bottom)

Size	34	36	38	40	42	44
Regular	41"	42"	43"	44"	45"	46"
Extra Length	44"	45"	46"	47"	48"	49"

FOR CORRECT SIZES

Chest Measurement Important

	Size A Fits	Size B Fits	Size C Fits	Size D Fits
Chest Measurement	33-36	37-39	40-42	43-45
Shirt Collar Size	13 1/2-14	14 1/2-15 1/2	15 1/2-16 1/2	17-18
Weight	140 lbs. or under	155 lbs. or under	190 lbs. or under	225 lbs. or under
Height	Under 5'9"	Under 5'10"	Under 5'11"	Under 6'

Order "X. L." if height exceeds that shown in above. Order next size larger if weight exceeds that shown in above classifications. Follow Measuring Instructions Carefully. (See Last Page.)



\$3.00 per suit

Tailored Soiesette PAJAMAS

Style 635 MIDDY Style

Style 640 COAT Style

Size Range: A, B, C, and D

Colors: Blue, Tan, and White

Length Service: Regular, Extra Long

● Two smartly styled fashions for comfortable sleeping, made of finest, soft, lustrous Soiesette. You may have your choice of either slip-over Middy style or the regulation Coat style.

All garments are trimmed as shown in the illustration and on the swatches, with contrasting piping. The trousers have a webbed draw-string with an insert of "Lastex" at the waistline which automatically provides for adjustability of size as well as comfort.

FOR CORRECT SIZE
Chest Measurement is Most Important

	Size A Fits:	Size B Fits:
Chest Measurement	33-36	37-39
Shirt Collar Size	13½-14	14½-15½
Weight	140 lbs. or under	165 lbs. or under
Height	Under 5' 9"	Under 5' 10"
	Size C Fits:	Size D Fits:
Chest Measurement	40-42	43-46
Shirt Collar Size	15½-16½	17-18
Weight	190 lbs. or under	225 lbs. or under
Height	Under 5' 11"	Under 6'



Order next size larger if weight exceeds that shown in above size classifications. Order "X.L." if height exceeds classifications shown above.

MIDDY Style shown at left—Style 635
COAT Style shown at right—Style 640



6 suits 11.5

Athletic Undershirt and Short

OF REAL RAY

Style No. 907 . . Athletic Undershirt

SIZES: 32, 34, 36, 38, 40, 42, 44, 46, 48, and 50
(Chest Measure)

COLORS: White, Light Blue

A tailored undershirt made of fine, Super-Knit Fabric of Pure Rayon for the man of today. Snug-fitting, non-binding and generously long. The deep armholes hemmed with an elastic stitch allow the utmost freedom. Ideal for year 'round use.

FOR CORRECT SIZE

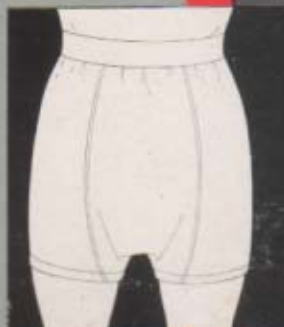
If your chest measures 32, 34, 36, 38, 40, 42, 44, 46, 48, 50
Order Undershirt size 32, 34, 36, 38, 40, 42, 44, 46, 48, 50
Order size according to number of inches indicated. If measurement exceeds any actual size, order the next size up. For instance, if chest measures exactly 36 inches, order size 36 shirt. If chest measures 37 inches, order size 38. If chest measures 38½ inches, order size 40.

Style 908 — Shorts

SIZES: 28, 30, 32, 34, 36, 38, 40, 42, 44, 46
(Waist Measure)

COLORS: White, Light Blue

Revised, improved construction featuring a new one-piece seat makes this a man's most popular undergarment today. Tailored of Super-Knit Real Ray with a wide band of long-lived "Lastex" which eliminates all buttons. The most comfortable fit ever devised for men's underclothing for year 'round wear.



FOR CORRECT SIZE

If your waist measures 28, 30, 32, 34, 36, 38, 40, 42, 44, 46
Order Short size . . . 28, 30, 32, 34, 36, 38, 40, 42, 44, 46
Order size nearest to number of inches indicated. If measure is odd number of inches, order next size up.

IMPORTANT NOTE: Make the proper distinction between Undershirt and Short sizes. Undershirt sizes are specified in accordance with chest measurements and Short sizes in accordance with waist measurements. There is generally a difference of 4" between the two—the waist measurement nearly always being smaller. For instance, the average man measuring 38" in the chest—requiring a size 38 Undershirt—generally measures 34" in the waist and requires a size 34 Short. The difference varies on so many men, however, that it is best to get the chest and the waist measurements accurately—specifying sizes accordingly.



Follow Measuring Instructions Carefully
(See Last Page)

2
6 suits \$11.50

DERBY UNDERSHIRT AND SHORT

OF NOVELTY KNIT REAL RAY



Note shaped bottom of undershirt



Style No. 911—Derby Undershirt

SIZES: 32, 34, 36, 38, 40, 42, 44, 46, 48, and 50
(Chest Measure)
COLOR: White

This finely tailored Undershirt, made of a new type of novelty striped, Real Ray fabric, which strikes a new note in smartness of appearance and design. Deep armholes hemmed with an elastic stitch allow utmost freedom. This garment is made somewhat shorter than Realsilk's well-known Style No. 907 Athletic Undershirt and is cut out at each side to be worn with the Derby Short.

FOR CORRECT SIZE

If your chest measures 32, 34, 36, 38, 40, 42, 44, 46, 48, 50
Order Undershirt size 32, 34, 36, 38, 40, 42, 44, 46, 48, 50

Order size according to number of inches indicated. If measurement exceeds any actual size, order the next size up. For instance, if chest measures exactly 36 inches, order size 38 Undershirt. If chest measures 37 inches, order size 38. If chest measures 38½ inches, order size 40.

Style No. 912—Derby Short

SIZES: 28, 30, 32, 34, 36, 38, 40, 42, 44, and 46
(Waist Measure)
COLORS: White, Blue

Realsilk sets a new mark in the styling of abbreviated Shorts with an improved construction which provides a convenient flap opening in the front. The garment is tailored of novelty striped, Real Ray fabric, tailored for comfort—non-binding.

Most of the short Shorts on the market are cut too skimpily—Derbies are tailored to fit smooth and yet to be underwear, not girdles.

The waist is tailored with a wide band of long-lived "Lastex" rubber to give a smooth, flat and comfortable fit.

Reinforced in the front with a double facing of self-material. The bottom of each leg is finished with a neat hem with "Lastex" braid enclosed around the complete circumference of the leg.

FOR CORRECT SIZE

If your waist measures 28, 30, 32, 34, 36, 38, 40, 42, 44, 46
Order Short size 28, 30, 32, 34, 36, 38, 40, 42, 44, 46

Order size nearest to number of inches indicated. If measure is odd number of inches, order next size up. A size smaller can be furnished for men preferring their garments particularly tight or extremely snug.



Follow Measuring Instructions Carefully
(See Last Page)

6 suits 11.50

SWISS RIBBED LISLE UNDERSHIRT and BROADCLOTH SHORT

No. 905 Swiss Ribbed Lisle Undershirt

No. 906 Broadcloth Short

Style 905—Swiss Ribbed Lisle Undershirt

SIZES: 32, 34, 36, 38, 40, 42, 44, 46, 48, 50
Chest Measurement
COLOR: White

A fine Swiss-Ribbed two-ply bleached lisle undershirt—snug-fitting, non-binding. It is perfectly cut—soft and comfortable.

FOR CORRECT SIZE

If your chest measures 32, 34, 36, 38, 40, 42, 44, 46, 48, 50
Order Undershirt size 32, 34, 36, 38, 40, 42, 44, 46, 48, 50
Order size according to number of inches indicated. If measurement exceeds any actual size, order the next size up. For instance, if chest measures exactly 36 inches, order size 36 shirt. If chest measures 37 inches, order size 38. If chest measures 38½ inches, order size 40.

Style 906—Broadcloth Short

SIZES: 28, 30, 32, 34, 36, 38, 40, 42, 44, 46
Waist Measure
COLOR: White

A new Short of superlatively fine broadcloth, featuring a one-piece seat construction similar to style 908 and with a French back waist-band adjustment shown in the insert below. This is a characteristic of the finer tailoring in men's underclothing of this nature.

FOR CORRECT SIZE

If your waist measures 28, 30, 32, 34, 36, 38, 40, 42, 44, 46
Order Short size . . . 28, 30, 32, 34, 36, 38, 40, 42, 44, 46
Order size nearest to number of inches indicated. If measure is odd number of inches, order next size up.

IMPORTANT NOTE: Make the proper distinction between Undershirt and Short sizes. Undershirt sizes are specified in accordance with chest measurements and Short sizes in accordance with waist measurements. There is generally a difference of 4" between the two—the waist measurement nearly always being smaller. For instance, the average man measuring 38" in the chest—requiring a size 38 Undershirt—generally measures 34" in the waist and requires a size 34 Short. The difference varies on so many men, however, that it is best to get the chest and the waist measurements accurately—specifying sizes accordingly.



Follow Measuring Instructions Carefully
(See Last Page)

6 for \$11.90

Athletic Union Suit

OF REAL RAY

STYLE No. 913

SIZES: 34, 36, 38, 40, 42, 44, 46, 48, 50

(Chest Measure)

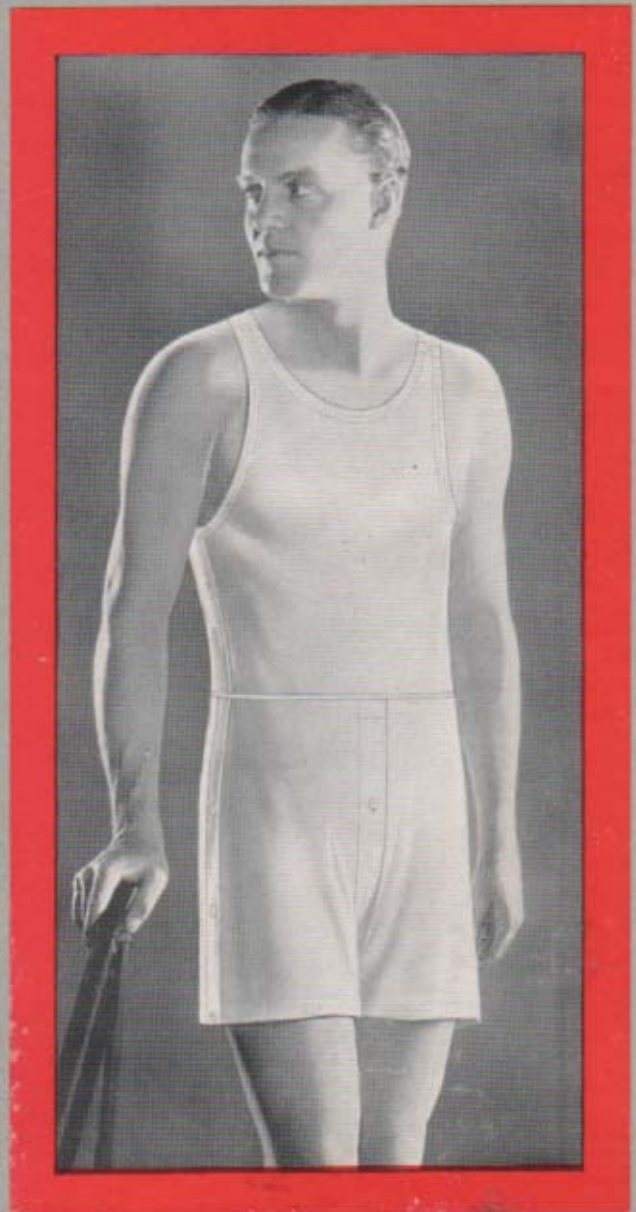
COLOR: White

● A new design in underwear, based upon athletic principles of tailoring that provide absolute comfort and freedom. This garment is made of the serviceable Super-Knit Fabric of Pure Rayon. Button fastening at the right shoulder strap. A special reinforcing "Snubber" at the waist in back, adds greatly to the wear and prevents pulling or binding.

FOR CORRECT SIZE

If your chest measures 34, 36, 38, 40, 42, 44, 46, 48, 50
Order Union Suit size 34, 36, 38, 40, 42, 44, 46, 48, 50

Order size according to number of inches indicated. If measurement exceeds any actual size, order the next size up. For instance, if chest measures exactly 36 inches, order size 36 Union Suit. If chest measures 37 inches, order size 38. If chest measures 38½ inches, order size 40.



Follow Measuring Instructions Carefully
(See Last Page)

63020 per doz



Fine Broadcloth Shirts

BY REAL SILK

Style 602—Collar Attached

Collar Sizes 13½, 14, 14½ Sleeve Lengths 30 to 34 inches

Collar Sizes 15, 15½, 16 Sleeve Lengths 31 to 35 inches

Collar Sizes 16½, 17, 17½, 18 Sleeve Lengths 32 to 36 inches

COLORS

White, Blue, Grey, Tan

Fully pre-shrunk, these shirts are the new idea in fine, fully pre-shrunk (Sanforized) broadcloth with the new Trubenized Collar (Patent Nos. 1968409-1964810). Permanent fusing of the three layers of the collar makes it impossible for them to wilt or separate. You get starched collar neatness and smartness with soft collar comfort. Realsilk shirts are tailored well and smartly styled with the new graduated waist which tapers to conform to the body proportions.

Follow Measuring Instructions Carefully—See Last Page.

3 for \$9.00

Smart Sport Shirts

Gaucha

Spun Rayon and Cotton



IN THREE WASHABLE FABRICS BY REAL SILK

600 White



600 Blue



Style 607 SPORT SHIRTS

● The smartest interpretation of the newest styles in men's sports shirts, varied as to cut and pattern to suit every taste and purpose. Collars on all these shirts are the same. Tailored to precision so that they look equally well worn open or closed. And the backs are a new free swing tailoring, comfortable for both active and spectator sports.

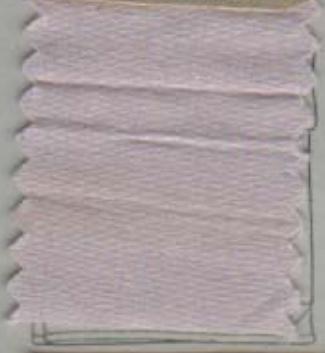
Gaucha and Linen are cut with a vented side and all three models may be worn either in or out of the trousers.

These shirts are designed for coolness, comfort and up-to-the-minute smartness.

FOR CORRECT SIZE

- Size A—For customers whose chest measurement is 34" or less
- Size B—For customers whose chest measurement is over 34" up to and including 39"
- Size C—For customers whose chest measurement is over 39" up to and including 44"
- Size D—For customers whose chest measurement is over 44"

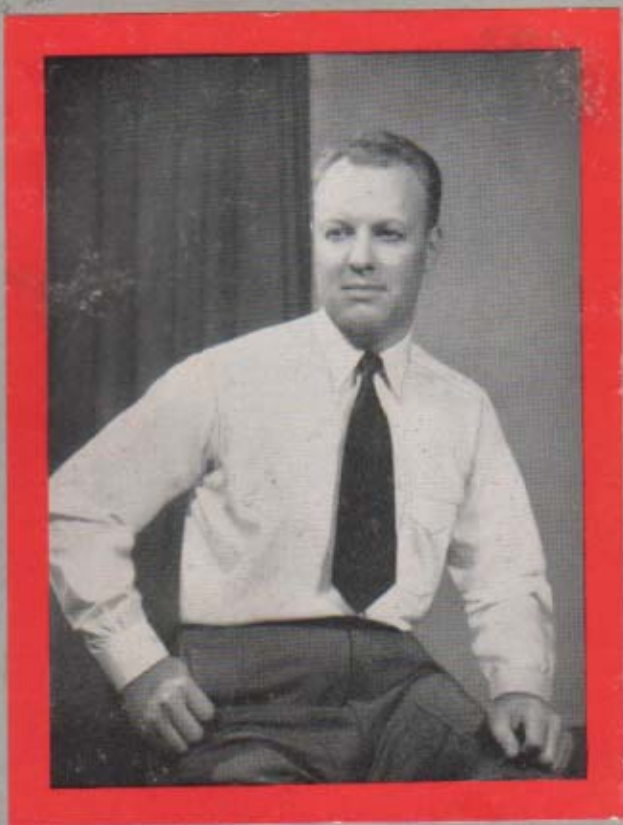
600 Grey



600 Tan



\$30.00 per doz
15.00 for 6
mix sizes + Colors to suit.



157-157-157

Broadcloth Shirtings

607 Linen



STYLE No. 600—Soft Collar
STYLE No. 602—Fused Collar*

[*Style 602—Starched collar neatness with soft collar comfort by a new process of fusing 3 layers of fabric by heat. An improvement over other processes. The collar will not blister or wrinkle.]

Collar Sizes	Sleeve Lengths
13 1/4 — 14 — 14 1/4	30 to 34 Inches
15 — 15 1/4 — 16	31 to 35 Inches
16 1/4 — 17 — 17 1/4 — 18	32 to 36 Inches

An exceptionally fine quality broadcloth fully Sanforized (pre-shrunk). These shirts are well tailored and smartly styled with a graduated waist which tapers to conform to body proportions.

607 Brown



607 Gaucho



Style 605—Regular Neckband Style

French Cuffs (Double) Color: White

Same size range—sleeve lengths and material as Style 600

607 Navy



WOOL
AND
Silk and Wool
SOCKS

BY REAL SILK

Doz 3/45

45 Ferrus (Embr.)
40 Red Grn. Heather (Pln.)
41 Red Grn. He'th'r (S.-Gr.)



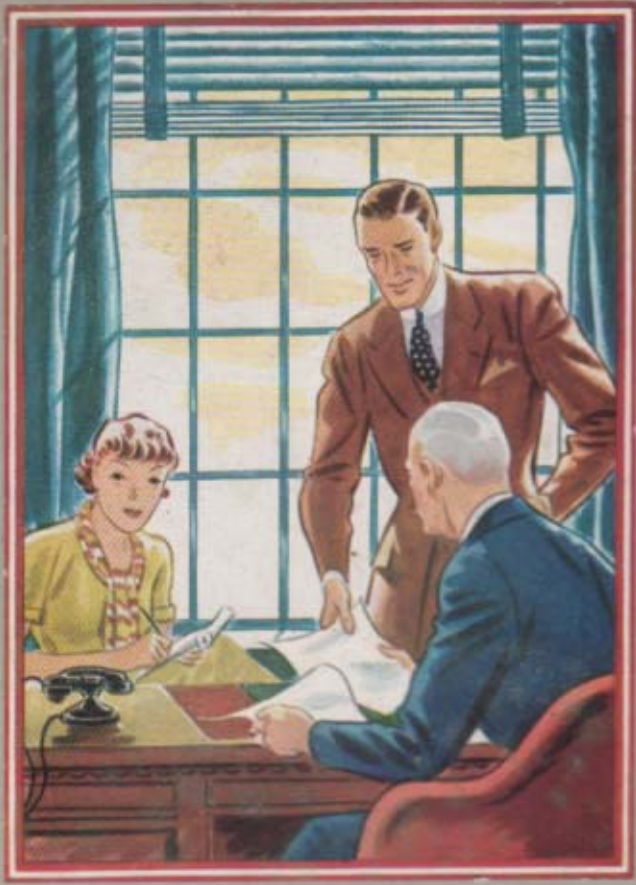
45 Zinc



45 Tuxedo (Embr.)
40 Soot (Plain)
41 Soot (Self-Garter)



45 Carbon



45 Colbalt



45 Seal (Embr.)
40 Chestnut (Plain)
41 Chestnut (Self-Garter)



45 Monarch (Embr.)
40 Royal Blue (Plain)
41 Royal Blue (Self-Garter)



45 Copper



Style 45—Silk and Wool—Hand Embroidered

HOW TESTS WERE MADE

1. Pittsburgh Testing Laboratory for both tests, one in 1934 and one in 1936, picked 100 pairs of Realsilk socks (Style 20) at random from Realsilk Mills in Indianapolis.
2. Representatives of laboratory went to leading retail stores in 50 different cities in all parts of the United States and said, "I want the best wearing silk socks you have, bar none, regardless of price."
3. Socks were worn by men in sixteen different walks of life, as they went about their daily routine . . . a Realsilk sock on one foot, a sock of another brand on the other foot.
4. Socks were returned to the laboratory at the end of each day for examination and uniform laundering.

RESULTS OF TESTS

Laboratory Report 173,009
January 14, 1936

LENGTH OF GENERAL WEAR (to first failure)

Realsilk average wear per sock 442.9 hours
Other brands average wear per sock 240.4 hours

COST OF WEAR

Realsilk average cost per 100 hours of wear per pair \$0.146
Other brands average cost per 100 hours of wear per pair \$0.47

Realsilk average cost per 100 hours of wear exceeded other brands' average hours of wear 84.2% and cost 68.8% less.

BEST-WEARING TOE—If a failure developed at any point other than the toe the socks were mended and put back into service.

LENGTH OF WEAR OF TOE

Realsilk average wear per sock 621.8 hours
Other brands average wear per sock 442.1 hours

COST OF WEAR PER PAIR

Realsilk average cost per 100 hours of wear per pair \$0.104
Other brands average cost per 100 hours of wear per pair 0.258

Realsilk average hours of wear of toe exceeded other brands by 40.6% and cost 59.6% less than the average of other brands.

PREVIOUS TESTS

Laboratory Report 162,772
May 7, 1934

LENGTH OF WEAR—**Realsilk** average wear per sock 404.15 hours
Other brands average wear per sock 284.98 hours

COST OF WEAR PER PAIR—**Realsilk** average cost per 100 hours of wear per pair \$0.16
Other brands average cost per 100 hours of wear per pair \$0.32

HERE'S THE ANSWER! Realsilk Patented 6-Ply Toe—The strongest, sturdiest toe ever put in a silk sock. In this test where wear was continued until a hole or failure developed in the toes—Realsilk average hours of wear exceeded other brands by 40.6% and cost less than half as much to wear.

\$1.00 per doz. - Same rate for 1/2 doz. on all such



20-21-50 Russian Calf



Style 20 - Pure Silk - Plain Colors
Style 21 - Pure Silk with Silk Top (Whiskerless)
These colors also in Style 50 Mercerized Lisle

22 Ticker



22 Mallet



22 Surf



22 Doe



22 Bridle



22 Bugle



22 Saddle



22 Link



22W Pigeon



22 Buck



22 Stretch



22W Thrush



\$11.00 per doz



Style 44—Fancy Socks (Patterned with Pure Ingrain Rayon)

46 Navy Heather



46 Oxford



46 Cambridge Grey



46 Brown Heather



46 Bluegrey



48 Sand



size
46 and 48

44 Grotto



44 Track



44 Par



44 Armor



44 Bunker



44 Bluerib



44 Skipper



44 Tropic



44 Turret



Style 44—Fancy Socks (Patterned with Pure Ingrain Rayon)

\$14.00 pending.

55 Walnut



55 Larch



55 Lido



55 Troy



55 Cherry



55 Rhodes



55 Pine



55 Elm



55 Venice



55 Malta



\$14.00 per doz.

59 Rouge



59 Amboise



59 Verdun



59 Havre



59 Lyon



59 Somme



59 Norman



59 Calais



59 Paris



59 Seine



59 Deauville



Style 58—French Type Lisle—Embroidered

43 Navy

43 Horizon



NICKEL



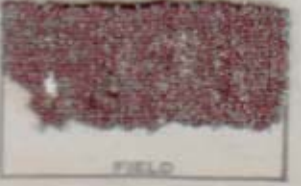
MOSS



HEATH



PEPPER



FIELD



SLOOP



LAVA



BRIAR



TURF



BLACK

43 Ski



doz 1400

22 Tower



22 Goal



22 Paddock



22 Whip



REALSILK

presents

A NEW PURE WOOL GENUINE 6x3 RIB

● Made on English type machines. A soft, fine wool sock, very elastic in construction . . . snug-fitting and comfortable.

55 Rome



55 Monoca



55 Parma



59 Riviera



EXTRAS

Ties 100% pure silk
Special price 52 1/2 per doz.
Same rate 1/2 doz.

Neckwear

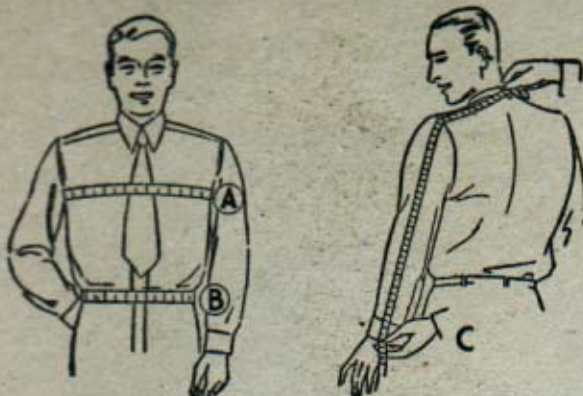
BY REALSILK

EVERY TIE BEARS THIS LABEL



MEASURING INSTRUCTIONS

IMPORTANT! Furnish actual measurements in inches on all men's underwear. It is not sufficient to merely ask customer the size of Undershirt or Short he wishes because Real Silk size standards are full and accurate and are different from those often furnished in stores. To get proper fitting garments be sure to use regular tapeline and give exact measurement.



Men's Undershirts

Undershirts are sized according to chest measurements.

Here is the way to determine the actual size required. See illustration A.

Measure all around the body at chest over shirt. Be sure tape measure is over shoulder blades at back. Order size according to the number of inches measured. For instance, if customer's chest measures 36 inches, order undershirt size 36. If measurement exceeds any actual size, order the next size larger. Example—If customer measures 36½ inches around chest, order size 38.

On order blank be sure to fill in carefully actual chest measurement as well as the size being ordered.

Men's Shorts

Shorts are sized according to waist measurements.

Measure around the waist next to the shirt—not over trousers. Order size nearest to number of inches indicated. If measurement is odd number of inches, order next size up. For example—if customer's waist measure is 33 inches order size 34. If measurement is 32½ inches only order size 32.

In measuring be sure to stretch the tapeline firmly and snugly around the waist. If inconvenient to measure under trousers deduct ¼ of an inch from the tape measurement in determining size. In no instance measure over the outside belt, as it is impossible to secure accurate measurement in this manner.

Be sure to fill in on order blank actual waist measurement as well as the size being ordered.

Men's Unionsuits

Men's Unionsuits are sized according to chest measurements, same as Undershirts.

Follow Undershirt instructions, to determine correct sizes.

Men's Pajamas

Men's Pajamas are sized according to chest measurements. Order size nearest to number of inches indicated. If measurement is odd number of inches, order next size up. For example—if customer measures 38 inches at the chest order size 38. If customer measures 38½ inches order size 38. If customer measures 39 inches order size 40.

Lengths—Broadcloth and Silk Crepe Pajamas for men are available in "Regular" or "Extra Long" lengths. Order as follows:

If customer measures, from waistline to instep, the following or less, order **REGULAR** length.

SIZES:	34	36	38	40	42	44
	42"	43"	44"	45"	46"	47"

If customer measures, from waistline to instep, the following or more, order **EXTRA LONG** length.

SIZES:	34	36	38	40	42	44
	42½"	43½"	44½"	45½"	46½"	47½"

Be sure to take careful measurement in each case as Realsilk's Pajamas are sized differently than pajamas in stores to provide closer accuracy of fit, and proper fit cannot be insured unless customer's actual chest measurement is secured.

On order blank be sure to fill in carefully actual chest measurement as well as the size being ordered.

Men's Shirts

Neck Sizes—Practically every man knows the correct neck size to order in his shirts. Write this carefully on your Order Blank. Verify its accuracy by asking customer if you have written it right.

Avoid exchanges by **making sure**.

Sleeve Length—Ask your customer if he knows exactly what sleeve length he requires. If he knows, then of course be sure to specify correct length on your Order Blank.

If he doesn't know his exact length, he probably isn't acquainted with the added satisfaction to be had with correct sleeve lengths. Explain the wide variety of sleeve lengths Realsilk service makes available. See chart of sizes and sleeve lengths.

Don't guess sleeve lengths. This too often results in exchanges. Where customer doesn't know, determine his exact length.

The above illustration (C) shows just how to measure. From center of the collar down over center of the shoulder, then to the point at the wrist where the customer wishes his sleeve to come.

COLLAR SIZES	SLEEVE LENGTHS
13½ - 14 - 14½	30 to 34 Inches
15 - 15½ - 16	31 to 35 Inches
16½ - 17 - 17½ - 18	32 to 36 Inches

Style D-1

Radzimir, Hand Printed.
Brown, Grey, Blue, Linen and
Palm Beach Suitings.



Style 555-O

Circular Spaced Figure.
All Suitings.

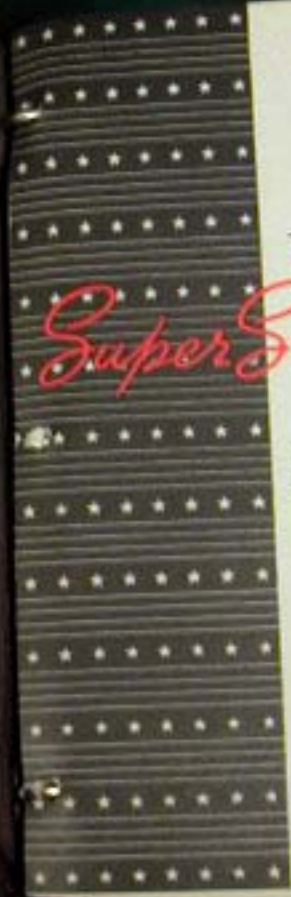


Realsilk
MEN'S SERVICE

Sock Size	KNEE WIDTH							
	34	36	38	40	42	44	46	48
Men's Sock Length	Men's Sock Size							
2	34	36	38	40	42	44	46	48
3 1/2	34	36	38	40	42	44	46	48
4	34	36	38	40	42	44	46	48
4 1/2	34	36	38	40	42	44	46	48
5	34	36	38	40	42	44	46	48
5 1/2	34	36	38	40	42	44	46	48
6	34	36	38	40	42	44	46	48
6 1/2	34	36	38	40	42	44	46	48
7	34	36	38	40	42	44	46	48
7 1/2	34	36	38	40	42	44	46	48
8	34	36	38	40	42	44	46	48
8 1/2	34	36	38	40	42	44	46	48
9	34	36	38	40	42	44	46	48
9 1/2	34	36	38	40	42	44	46	48
10	34	36	38	40	42	44	46	48
10 1/2	34	36	38	40	42	44	46	48
11	34	36	38	40	42	44	46	48
11 1/2	34	36	38	40	42	44	46	48
12	34	36	38	40	42	44	46	48

SOCK COUNTY - MEN'S SOCKS

Sock Size	LENGTH CASES			
	1/2	3/4	1	1 1/2
2	34	36	38	40
3 1/2	34	36	38	40
4	34	36	38	40
4 1/2	34	36	38	40
5	34	36	38	40
5 1/2	34	36	38	40
6	34	36	38	40
6 1/2	34	36	38	40
7	34	36	38	40
7 1/2	34	36	38	40
8	34	36	38	40
8 1/2	34	36	38	40
9	34	36	38	40
9 1/2	34	36	38	40
10	34	36	38	40
10 1/2	34	36	38	40
11	34	36	38	40
11 1/2	34	36	38	40
12	34	36	38	40



REAL SILK

Super Service Socks

...THE BEST WEARING
SOCKS IN AMERICA-

bar none!



NATIONALLY RECOGNIZED
FOR THEIR SMARTER STYLE
AND LONGER WEAR . . .



REAL SILK
Super Service Socks

...THE BEST WEARING
SOCKS IN AMERICA—

bar none!



NATIONALLY RECOGNIZED
FOR THEIR SMARTER STYLE
AND LONGER WEAR...