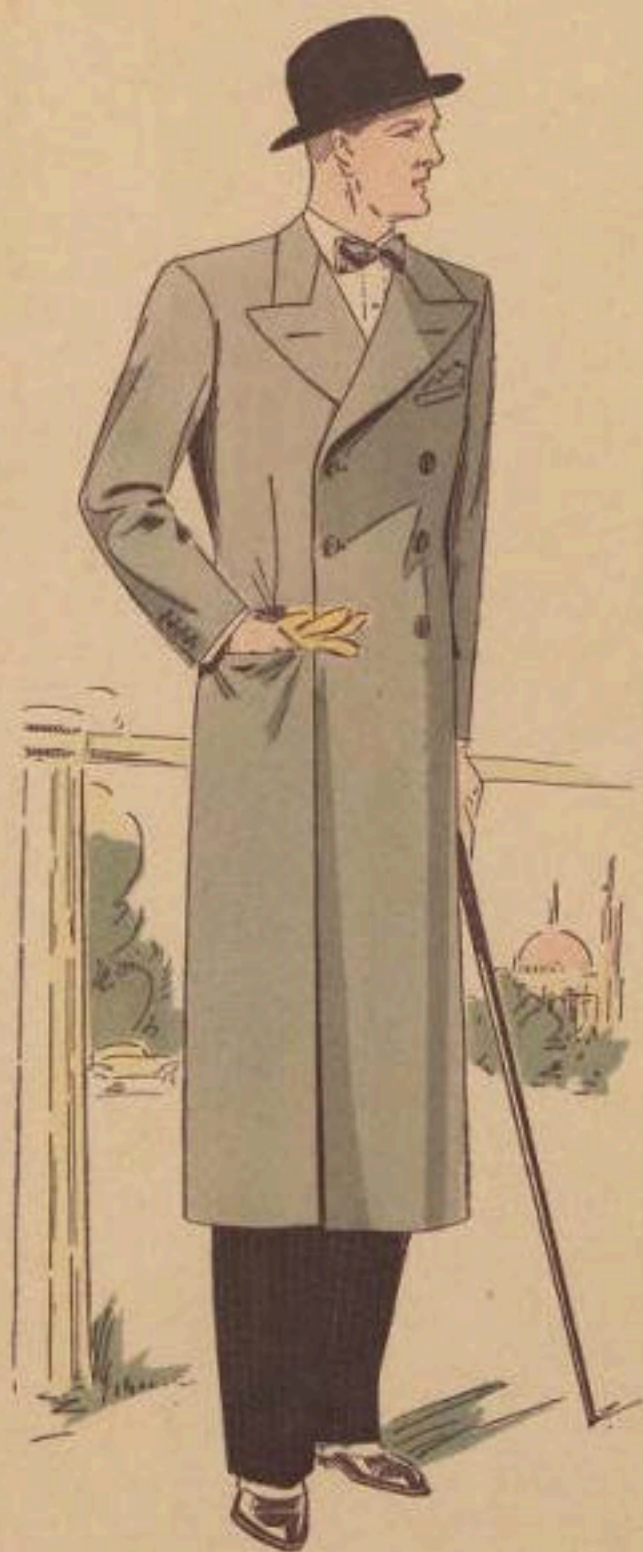


SPRING AND SUMMER 1934



35

SMART

Fashion Supplement to
AMERICAN HARTORIAL DESIGNER
"A DE LUXE FASHIONS FOR MEN"
145 West 28th Street
New York

COPYRIGHT
—
PRINTED IN BELGIUM

SPRING AND SUMMER 1934



38

SMART

Fashion Supplement to
AMERICAN SARTORIAL DESIGNER
"DE LUXE FASHIONS FOR MEN"
145 West 28th Street
New York

COPYRIGHT

PRINTED IN BELGIUM

SPRING AND SUMMER 1934



36

SMART

Fashion Supplement to
AMERICAN HARTSHORN DESIGNER
* DE LUKE FASHIONS FOR MEN *
145 West 28th Street
New York

COPYRIGHT
—
PRINTED IN BELGIUM



37

SMART

Fashion Supplement to
AMERICAN SARTORIAL DESIGNER
" DE LUXE FASHIONS FOR MEN "
145 West 28th Street
New York

COPYRIGHT
—
PRINTED IN BELGIUM

SPRING AND SUMMER 1933



MAYFAIR GENTLEMAN

NEW YORK

LONDON

Established by

American Sartorial Designer

"De Luxe Fashions For Men"

SPRING AND SUMMER 1933



MAYFAIR GENTLEMAN

NEW YORK

LONDON

Established

American Sartorial Designer

"The Best Fashions for Men"

1000 Broadway, New York

1933

© 1933 Mayfair Gentleman

SPRING AND SUMMER 1934



MAYFAIR GENTLEMAN
NEW YORK LONDON

Edited by
American Sartorial Designer
"De Luxe Fashions for Men"

SPRING AND SUMMER 1934



MAYFAIR GENTLEMAN
NEW YORK LONDON

Published by
American Sartorial Designer
"De Luxe Fashions For Men"

SPRING AND SUMMER 1934



MAYFAIR GENTLEMAN
NEW YORK LONDON

Published by
American Sartorial Designer
"De Luxe Fashions For Men"

SPRING AND SUMMER 1934



MAYFAIR GENTLEMAN
NEW YORK LONDON

Published by
American Sartorial Designer
"Be Luxe fashions for Men"

146, WOODS & THE STREET
NEW YORK CITY

© 1934

PRINTED IN BELGIUM

SPRING AND SUMMER 1911



11

12

MAYFAIR GENTLEMAN
NEW YORK LONDON

Published by

American Sartorial Designer
— De Luxe Fashions for Men —

SPRING AND SUMMER 1934



MAYFAIR GENTLEMAN
NEW YORK LONDON

Designed by
American Sartorial Designer
"De Luxe Fashions for Men"

SPRING AND SUMMER 1934



MAYFAIR GENTLEMAN
NEW YORK LONDON

Published by
American Sartorial Designer
"De Luxe Fashions for Men"

SPRING AND SUMMER 1933



MAYFAIR GENTLEMAN
NEW YORK LONDON

Established by
American Sartorial Designer
"De Luxe Fashions for Men"

SPRING AND SUMMER 1934



MAYFAIR GENTLEMAN
NEW YORK LONDON

Published by
American Sartorial Designer
"De Luxe Fashions for Men"

65 WEST 28 TH STREET
NEW YORK CITY

COPYRIGHT

PRINTED IN BELGIUM



Created and Produced by
Glicksman Fashion Co. Toby Rubovits, Inc.
New York Chicago



Back of 301
No Vent

Model No. 301
A Swagger Young Men's Sack

Two Buttons, Peaked Lapels
Back as shown unless otherwise ordered
*Distinctive — Very Smart when
buttoned on top button*



Back of 302
No Vent

Model No. 302
A Typical Young Men's Model

Two Buttons, Notch Lapels
Back as shown unless otherwise ordered

*A Graceful Sack
with the Newest Style Tendencies*



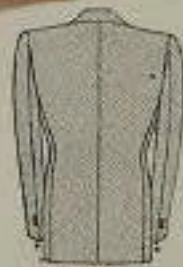
Back of 303
No Vent

Model No. 303
Ultra-Smart Young
Men's Double-
Breasted Model

(Two buttons only to button)
Semi-Peaked Lapels
Back as shown unless
otherwise ordered

*Another Requisite for
the Wardrobe of the
Well-Dressed Man*

©



Back of 304
No Vent

Model No. 304
The Very Newest Modified Drape Sack
Two Buttons, Notch Lapels
Lower Piped Pockets

This is a new version of the Drape Coat. There is no wrinkling across the chest, yet the model retains all the characteristics of the Drape—tapering sleeves and trousers.

Back as shown unless otherwise ordered

*The Season's Popular Creation for the
Fastidious Dresser*

©



Back of 305
No Vent

Model No. 305
A Snappy Double-Breasted Young Men's Model

Two Buttons,
Semi-Peaked Lapels
Three Patch Pockets
Back as shown unless
otherwise ordered

*You are always "right"
in a Double-Breasted*

*Authentic
Collegiate
Models*



Back of 306
No Vent

Model No. 306
Three-Button
Notch Lapel
Sack

Back as shown unless
otherwise ordered



Back of 307
No Vent

Model No. 307
Two-Button
Notch Lapel
Sack

Back as shown unless
otherwise ordered

©



Back of 303
No Vent

Model No. 303
A Stylish Conservative Model
Two Buttons, Notch Lapels
Back as shown unless otherwise ordered
*Conservative—yet with Smartness
in Every Line*



Back of 309
No Vent

Model No. 309
An Authentic Conservative Model

Three Buttons, Notch Lapels
Back as shown unless otherwise ordered
*Specially Designed for the Business
and Professional Man*



Model No. 310
Conservative Sack
Three-Button
Double-Breasted

Back as shown unless
 otherwise ordered



Back of 310 and 311
 No Vent

Model No. 311
Conservative Sack
Three-Button
Straight-Front

Also made with two buttons
 if desired

Back as shown unless
 otherwise ordered



Back of 312
 No Vent

Model
No. 312
Natural
Sack
Semi-
Conservative
Two Buttons

Back as
 shown unless
 otherwise
 ordered



Back of 313
No Vent

Model No. 313
Three-Button
Notch Lapel Sack

Three Patch Pockets
Stitched Edges and Pockets
Gathered back with half
belt as shown unless
otherwise ordered



Back of 314 No Vent

Model No. 314
Two-Button
Notch Lapel Sack

Three Patch Pockets
with Inverted Pleats
Lower Pockets with Flaps
Stitched Edges and Pockets
Also made with regular
trousers if desired
Back with half belt
as shown unless otherwise
ordered



Model No. 315
Conservative
Stout Sack

Two Buttons, Notch Lapels
 Back as shown unless
 otherwise ordered



Back of 315 and 316
 No Vent

Model No. 316
Conservative
Stout Sack

Three Buttons, Notch Lapels
 Back as shown unless
 otherwise ordered

Model No. 317
Young Men's
Stout Sack

Two Buttons,
 Peakod Lapels



Back of 317
 No Vent
 Back as shown
 unless otherwise
 ordered



Back of 318
No Vent

Model No. 318
Conservative Sack

Three Buttons, Notch Lapels
Three Patch Pockets
Back as shown unless
otherwise ordered

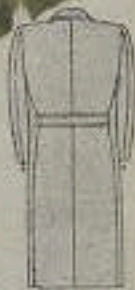


Back of 319, No Vent

Model No. 319
Young Men's Sack

Two Buttons, Notch Lapels
Three Patch Pockets
Back as shown unless
otherwise ordered





Back of 320
Center Vent

Model No. 320
The Correct Button-Thru Top Coat

Three Buttons, Notch Lapels
Upper Breast Pocket

Back with half belt as shown unless otherwise ordered

Comfortable—yet Strikingly Smart



Back of 321
Center Vent

Model No. 321
A New Polo Top Coat

Three-Button, Double-Breasted
(Two lower buttons to button)
Split Sleeves with Cuffs
Lower Patch Pockets with Flaps
All Around Belt running over
second button

Back as shown unless otherwise ordered



Back of 322-Center Vent

Model No. 322
A New Raglan
Top Coat

Three Buttons, Notch Lapels
Lower Patch Pockets
Split Sleeves with Cuffs
Back with half belt as shown
unless otherwise ordered



