

*Grafton Fashions*



29, SOUTH MOLTON ST., LONDON, W.1

No. 2

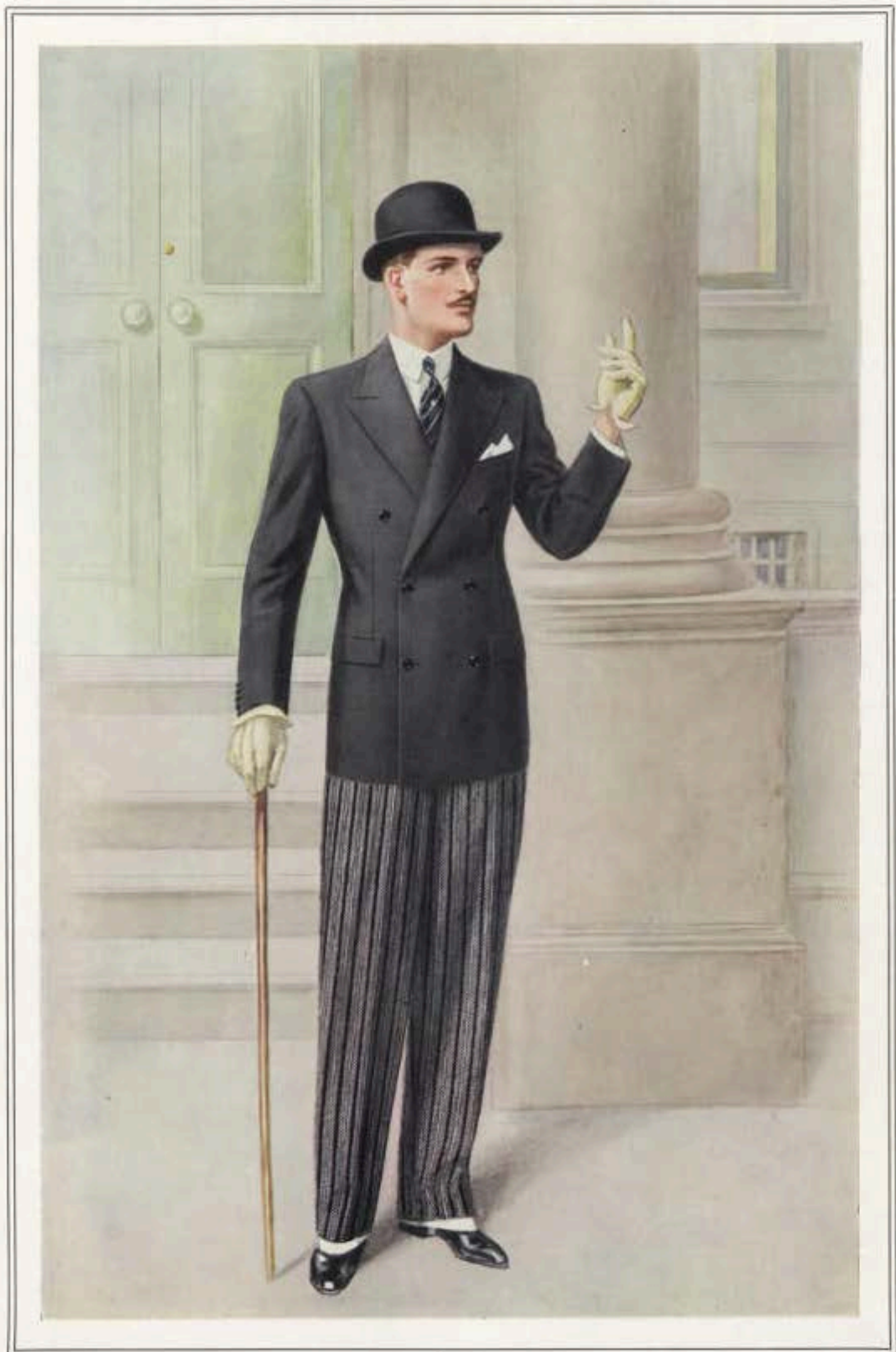
No. 3

SERIES S & S. 1933

*Luxe Edition*



*Grafton Fashions*



25, SOUTH MOLTON ST., LONDON, W.1

No. 1

SERIES S & N 1901

*Luxe Edition*

*Grafton Fashions*



56, SOUTH MOLTON ST., LONDON, W.1

No. 4

No. 5

SEWEN 5 & 6 1929

*Luxe Edition*



*Grafton Fashions*



28, SOUTH MOLTON ST., LONDON, W.1

No. 8

SERIES B & S 1933

*Luxé Edition*

*Grafton Fashions*



24, SOUTH MOLTON ST., LONDON, W.1

No. 9

DESIGNED BY G. G. G.

*Luxury Edition*



*Guylton Fashions*



25, SOUTH MOLTON ST., LONDON, W. 1

No. 10

No. 11

SCHIFF & S. 1911

*Luxe Edition*



*Grafton Fashions*



26, SMITH MOLTON ST., LONDON, W.1

No. 12

No. 13

SERIES 2 & 3 1921

*Luxe Edition*



*Grafton Fashions*



38, SOUTH MOLTON ST., LONDON, W.1

No. 14

No. 15

SERIES C & D 1911

*Luxe Edition*



*Grafton Fashions*



38, SOUTH MOLTON ST., LONDON, W.1

No. 17

No. 18

SERIES D R & 1911

*Luxé Edition*



*Grafton Fashions*



22, SOUTH MOLTON ST., LONDON, W. 1

No. 19

No. 20

SERIES S & S 1919

*Luxé Edition*



*Grafton Fashions*



25, SOUTH MOLTON ST., LONDON, W.1

No. 1

No. 2

COPYRIGHT - SERIES A & W 1933-34

*Luxury Edition*



*Grafton Fashions*



28, SOUTH MOLTON ST., LONDON, W.1

No. 3

COPYRIGHT SERIES A & W 1923-24

*Luxé Edition*



*Grafton Fashions*



28, NORTH WELTON ST., LONDON, W.1

No. 4

No. 5

COPYRIGHT SERIES A & W 1935-36

*Luxe Edition*



*Grafton Fashions*



48, SOUTH MOLTON ST., LONDON, W.1

No. 6

COPYRIGHT SERIES A & W 1933-34

*Luxur Edition*



*Grafton Fashions*



25 SOUTH MILTON ST., LONDON, W.1

No. 7

No. 8

COPYRIGHT SERIES A & W 1933-34

*Luxe Edition*



*Grafton Fashions*



28, SOUTH WALTON ST., LONDON, W.1.

No. 9

COPYRIGHT SERIES A & W 1933-34

*Luxe Edition*

*Grafton Fashions*



38, SOUTH MOLTON ST., LONDON, W.1

No. 6

COPYRIGHT SERIES A & W 1923-24

*Luxe Edition*



*Grafton Fashions*



22, SOUTH MOLTON ST., LONDON, W.1

No. 4

No. 5

COPYRIGHT SERIES A & W 1925-26

*Luxe Edition*



*Grafton Fashions*



36, SOUTH MOLTON ST., LONDON, W.1

No. 19

No. 20

GEORGE H. & C. 1913

*Luxury Edition*



*Grafton Fashions*



24, SOUTH MOLTON ST., LONDON, W.1

No. 1

No. 2

COPYRIGHT SERIES A & W 1922-24

*Luxe Edition*

*Grafton Fashions*



26, SOUTH MOLTON ST., LONDON, W. 1

No. 10

DESIGNED BY G. S. 1911

*Luxur Edition*