

# FASHIONS

*Styled for*

*the Smart Young Man*



*Fall and Winter*  
**1937**

*Chicago Woolen Mills Co.*

CHICAGO · ILLINOIS







81

Regular Vest  
Standard Style



82

Latest Style Waistcoat  
Vest for Young Men. Flaps  
on lower pockets. Bottom  
button does not button.



76

Pinch Back with Yoke  
and Center Vent  
Extra Charge \$1.50



70

Half Belt Back



84

Regular Vest  
Long Points



86

Newest Double-Breasted  
Diamond Pointed Vest  
with Collar. Long Points.



83

Double-Breasted Vest  
with Collar. To Wear with  
High Waisted Trousers.



85

Notch Collar Vest



78

Novelty Pinch Back with  
Inverted Center Pleat  
Extra Charge \$1.50



79

Full Cut Back with  
2 Inverted Pleats  
Extra Charge \$1.50



87

Long Point Vest  
Flaps on Lower Pockets



88

Young Men's Vest  
Bottom button does not  
button.

DO NOT OMIT FRONT STYLE WANTED. THESE COAT STYLES ARE FOR BACKS ONLY.



71

Medium Fit Back



72

Conservative Back



73

Form-Fitting Back



75

Pinch Back  
with Half Belt



94

Novelty Back with Pinch  
Pleats above Half Belt.  
Center Vent.



95

Novelty Shaped Back  
Shoulder Pleats and  
Side Vents  
Extra charge 50c



64

Yoke Back with  
Inverted center pleat  
Extra charge \$1.00



90

Yoke Back with Un-  
pressed Pleats above  
Half Belt. Center Vent.  
Extra charge \$1.00



80

Cassel Sleeve Back  
with Half Belt.  
Shoulder Pleats  
and Side Vents  
Extra charge \$1.00



55

Free-Swing Back. Ex-  
pansion pleats to belt  
Extra charge \$1.00



91

Novelty Panel Back  
with Diamond Yoke  
and Slanting Pleats  
Extra charge \$1.00



65

New Panel Back  
Extra charge \$1.00



92

Regular Trousers



97

Regular Cut Trousers  
Wide Waistband  
One-eighth top pockets



46

Regular Cut Trousers  
Wide overlapping  
waistband



47

English Slacks.  
One pleat. Adjust-  
able side straps.



98

English Drapè Trousers.  
Two pleats. Full cut legs.



42

Novelty Trousers with  
loose welt side seams.



**Model No. 124**

**Full Dress for Formal Evening Wear**

Peaked lapels silk faced to edge.



**Model No. 199**

**Mess Jacket for Formal Occasions**

Made from white linen or pique.



Back of No. 199



**Model No. 122**

**Standard Tuxedo**

Peaked lapels silk faced to edge.



**Model No. 189**

**Double-Breasted Tuxedo**

Silk faced lapels

This coat buttons at lower button only

Side pockets are piped (no flaps)



**Dress Vest No. 20**  
Double-Breasted Full Dress or Tuxedo Vest With shawl collar



**Dress Vest No. 23**  
Single-Breasted Full Dress or Tuxedo Vest With shawl collar Four buttons



**Dress Vest No. 24**  
Single-Breasted Tuxedo Vest Square shawl collar Three buttons

Collar made with same cloth as vest. If satin collar is wanted, see

For extra charges on these models, see

**Model No. 125**

**Clerical Frock**

When ordering, give size  
and whether linen collar worn.



(Above)

**Model No.  
161  
Double-  
Breasted  
Prince Albert  
Frock**

Semi-peaked  
lapels, silk  
faced to but-  
ton holes.

(Above)

**Model No. 1  
Clerical Mode**

This coat has reg-  
ular lapels and collar,  
shown. . . . It is usu-  
ally worn with Clerical  
Style No. 25.

# Newest Hollywood Drape Model



## Back Style No. 159

Half belt and soft gathered  
pleats above belt as  
shown.

Model No. 159

We make only the overcoat models illustrated on this page. Do not ask us to make special styles other than those shown hereon. Order from our regular men's overcoat materials. We do not carry any special fabrics for ladies.



Back L-11  
Center Vent

**Model No. L-11**  
**Four-Button Single-Breasted Overcoat**

Raglan shoulders.  
Slash pockets.  
Cuffs on sleeves.



Back L-14  
Center Vent

**Model No. L-14**  
**Two-Button Double-Breasted Overcoat**  
Regular flap pockets.



Back L-24  
Center Vent

**Model No. L-24**  
**Five-Button Single-Breasted Overcoat**

Belt all around.  
Patch pockets with flaps  
and inverted pleats.  
Cuffs on sleeves.



**Model No.**  
**Two-Button D**  
**Breasted Ra**  
**Polo Coc**

Slash pocke  
Cuffs on slee



We feature here the newest and most stylish mannish-tailored models for the ladies. These are the only ladies' models we make. These models are tailored from our regular men's fabrics shown in the line.

We do not make any other styles for ladies.

We do not carry any special fabrics — Order from cloth shown in line.



Back L-10  
No Vent

### Model L-10

Link Button Suit

Long roll peaked lapel  
regular flap pockets



Back L-22  
No Vent

### Model L-22

Two-Button Suit

Peaked lapels  
Piped lower pockets



Back L-25  
No Vent

### Model L-25

Two-Button Suit

Notch lapels.  
Regular flap pockets.



Back L-12  
No Vent

### Model L-12

Double-breasted

Buttons on lower button only. Lower patch pockets with pinch pleats. Cuffs on sleeves. Stitched edges.

### INSTRUCTIONS FOR MEASURING

Measurements for ladies sack coats and overcoats taken same as men's coats. Take breast measure around largest part over bust (over the dress

### COAT LENGTHS

Women's suit coats are worn longer than men's. The following table shows average lengths for various heights.

Coat Length



**Model No. 108**

**Two-Button  
Sports Style**

The favored informal college model, semi-notch lapels. Lower patch pockets with flaps. Back with side vents as shown unless otherwise ordered.



Back of 108  
Side Vents



**Model No. 115**  
**Three-Button**  
**Straight Front Style**

A very easy fitting model  
with notched lapels. Back  
as shown, unless other-  
wise ordered.



**Model No. 113**

**Double-Breasted**  
**Conservative Style**



Buttons on all three buttons  
thereby giving a short roll  
effect. Back as shown, un-  
less otherwise ordered.





**Model No. 120**

**Two-Button Model  
for Stout Men**

A conservatively designed  
notch lapel style. Back as  
shown unless otherwise  
ordered.

©











Back of 142 and 143  
Center Vest





Back of 147  
Center Vent

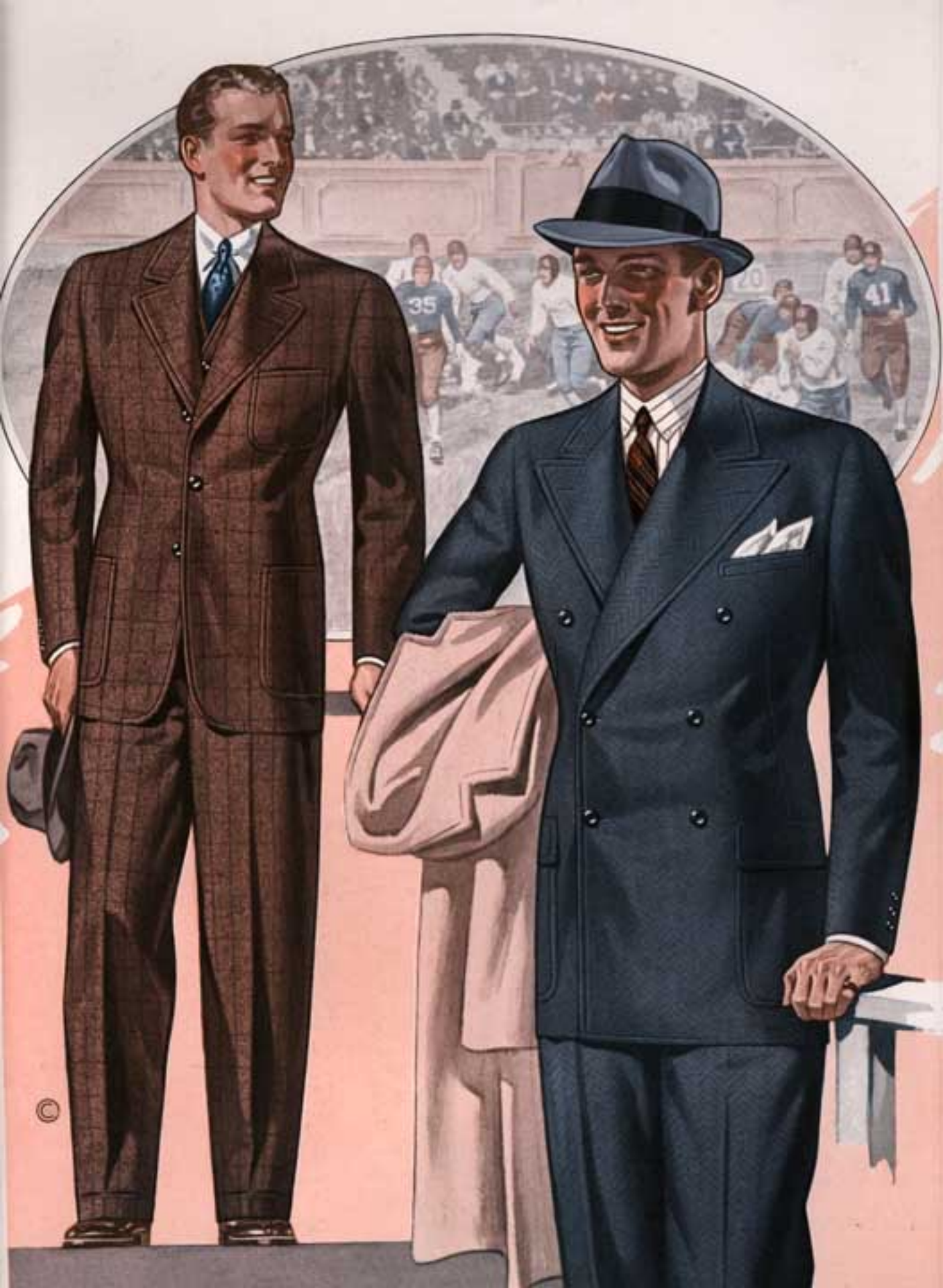
© **Model No. 149**  
**Chesterfield**  
**Overcoat or**  
**Topcoat**

The accepted fly front model, welt breast pocket. Medium fitting back as shown unless otherwise ordered.



Back of 149  
Center Vent





©



**Model No. 186**

**Two-Button  
Sports Style**

Notch lapels and three patch pockets with buttoned flaps, stitched edges. Back as shown unless otherwise ordered.



Back of 186  
No Vent

**Model No. 193****The RITZ**

A two-button model with style in every line. Rope shoulders. Stitched edges. Back as shown, unless otherwise ordered.

**Model No. 196****The SENATOR**

The latest in double-breasted. Buttons on bottom button only—patch pockets with pinch pleats. Rope shoulders. Stitched edges. Back as shown unless otherwise ordered.



Back style for all models shown on this page

**Model No. 194****The SAVOY****Model No. 195****The AMBASSADOR**



MODERN

Vestback  
Lining

N A

Design...

Colorings

of discrimination  
for slim or stout—  
soon comfort as  
fit and are there-  
demanding the

**J-B-EASE**  
REG. U.S. PAT. OFF.  
*Lastex*  
**VESTBACK**

Available in a wide  
of harmonizing

Extra Charge

\$1.50



*Have you ever been in a straight-jacket?*

Probably not, but most of us have had that uncomfortable feeling—perhaps we've gained a little weight, and our vest is too tight—maybe we've dined or wined too heartily—whatever the reason J-B-EASE Vestback, made with the miracle "Lastex" yarn, allowing an expansion of three to four inches—assures a "Life-time of ease and comfort."

FOR COMFORT AND FIT

**J-B-EASE**