

Detmer Woolens

"Wear and Tailor Best"

VOLUME 30-1

THE NEW YORK
PUBLIC LIBRARY
217222B
ARTHUR L. LANE AND
ELIZABETH TILDEN FOUNDATION
1941

Gar



Copyright, 1939, Glensheen Fashion Co., Inc., N. Y. C.

Model No. 701

Young Men's Three-Button Notch Lapel Style

Very distinctively styled

Back as shown unless otherwise ordered



Back of 701
No Vest



Model No. 702

Young Men's Two-Button Notch Lapel Style

Leads in smartness and popularity

Back as shown unless otherwise ordered



Back of 702
No Vent

Come out from behind those glasses!

Cutler



Model No. 703

Young Men's Three-Button Peaked Lapel Style

The latest in smart styling

Back as shown unless otherwise ordered

Model No. 704

Young Men's Two-Button Peaked Lapel Style

Styled in perfect good taste

Back as shown unless otherwise ordered



Back of 703 and 704
No Vent



Model No. 705

Young Men's Double-Breasted Drape or Lounge Style

(Three buttons — two to button)
PIPED LOWER POCKETS

Back as shown unless otherwise ordered

NOTE: FULLNESS ACROSS CHEST AND IN SLEEVE HEADS. SOFT FABRICS RECOMMENDED FOR THIS MODEL



Back of 705
No Vent

Model No. 706

Young Men's Double-Breasted Style

(Three buttons — two to button)
Smartly styled in every detail

Back as shown unless otherwise ordered



Back of 706
No Vent



January

5080

Model No. 707

Young Men's Two-Button Drape or Lounge Style

The new peaked lapel model
PIPED LOWER POCKETS

Back as shown unless otherwise ordered

NOTE: FULLNESS ACROSS CHESTS AND IN SLEEVE HEADS OF THESE MODELS, THEY TAILOR BEST IN SOFT FABRICS

Model No. 708

Young Men's Three-Button Drape or Lounge Style

The authentic notch lapel sack
PIPED LOWER POCKETS

Back as shown unless otherwise ordered



Back of 707 and 708
No Vent



Model No. 709

Three-Button University Style

Correct notch lapel model

Back as shown unless otherwise ordered

Model No. 710

Two-Button University Style

A notch lapel style leader

Back as shown unless otherwise ordered



Back of 709 and 710
No Vest

2017222B



Back of 712
No Vent



Model No. 712

Two-Button Notch Lapel
Sports Style

Fashionable for all informal
wear. Patch pockets with in-
verted pleats. Yoke back with
pleats and half belt as shown
unless otherwise ordered.



Model No. 713

Three-Button Sports Style

Featuring the new semi-peaked
lapels. Patch pockets with pinch
pleats. Pinch back with half belt
as shown unless otherwise
ordered.



Back of 713
No Vent

Model No. 711

Two-Button Notch Lapel Sports Style

Smart informality at its best. Lower patch pockets with
flaps. Sport back with soft pleats above half belt as
shown unless otherwise ordered.



Back of 711
Center Vent



Model No. 715

Three-Button Tab Collar
Sports Style

Newest notch lapels with collar tab. Lower patch pockets. Stitched edges. Sports back with inverted pleat and pinch pleats unless otherwise ordered.



Back of 715
No Vent



Back of 716
No Vent



Model No. 716

Three-Button Double-Breasted
Sports Style

Correctly designed to button on two buttons. Lower patch pockets. Stitched edges. Sport back with half belt and pleats as shown unless otherwise ordered.



Model No. 714

Three-Button Sports Style

A distinctive notch lapel model. Plain patch pockets. Stitched edges. Gusset sleeve back with half belt as shown unless otherwise ordered.



Back of 714
Side Vent



Back of 718
No Vent



Back of 720
No Vent



Model No. 720

Young Men's Three-Button
Hot Weather Style
Stylish and popular for summer.
Notch lapels. Patch pockets.
Back as shown unless otherwise
ordered.

Model No. 718
Young Men's Two-Button
Hot Weather Style
Assures well-dressed summer
comfort. Notch lapels. Patch
pockets. Pinch back with half
belt as shown unless otherwise
ordered.



Model No. 719

Conservative Three-Button
Hot Weather Style
Notch lapel model for summer
wear. Patch pockets.
Back as shown unless otherwise
ordered.



Model No. 721

Conservative Two-Button
Hot Weather Style
Combines summer comfort with
good appearance. Notch lapels.
Patch pockets.
Back as shown unless otherwise
ordered.



Model No. 717

Young Men's Double-Breasted Summer Style
Smart hot weather model, two buttons to button. Lower
patch pockets. Half belt back with soft pleats as shown
unless otherwise ordered.



No Vent
Back of 719 and 721



Back of 717
No Vent



Model No. 722

Young Men's Long Roll
Double-Breasted Style
Fashionable two-button model,
with lapels rolling to bottom but-
ton. **PIPED LOWER POCKETS.**
*Back as shown unless otherwise
ordered*



Model No. 723

Young Men's Two-Button
Double-Breasted Style
Conforms to the newest trend
*Back as shown unless otherwise
ordered*



Model No. 724

Young Men's Two-Button
Rope Shoulder Style
Features smart peaked lapels
*Back as shown unless otherwise
ordered*



Back of all Models
on this page



Model No. 725

Young Men's One-Button
Peaked Lapel Style
Designed with graceful, long
rolling lapels.
*Back as shown unless otherwise
ordered*



Model No. 726

Medium Fitting Three-Button Notch Lapel Style

Very smart for business wear

Back as shown unless otherwise ordered

Model No. 727

Medium Fitting Two-Button Peaked Lapel Style

Favored by well-groomed business men

Back as shown unless otherwise ordered



Back of 726 and 727
No Yoke



Model No. 728

Conservative Three-Button Notch Lapel Style

Smartly combines comfort and style

Back as shown unless otherwise ordered

Model No. 729

Conservative Two-Button Notch Lapel Style

Popular with business and professional men

Back as shown unless otherwise ordered



Back of 728 and 729
No Vent

©



Model No. 730
Young Men's Two-Button Stout Model
Stylish peaked lapel neck
Back as shown unless otherwise ordered



Model No. 731
Conservative Two-Button Stout Model
An easy fitting notch lapel style
Back as shown unless otherwise ordered



Back of 730 and 731
No View



Model No. 732

Medium Fitting Three-Button
Double-Breasted Style
(Two buttons to button). De-
signed for semi-conservative
dressers.

*Back as shown unless otherwise
ordered*



Back of 732
No Vent



Model No. 733

Conservative Three-Button
Double-Breasted Style
Comfortable, stylish and correct
*Back as shown unless otherwise
ordered*



Model No. 734

Conservative Three-Button
Straight Front Style
An easy fitting notch lapel sack
*Back as shown unless otherwise
ordered*



Back of 733, 734
and 735
No Vent



Model No. 735

Conservative Three-Button
Stout Model
A correct notch lapel style
*Back as shown unless otherwise
ordered*



Model No. 737

Topcoat with Military Collar
Full cut, split, set-in sleeves
with tabs. Slash pockets.
Stitched edges. Loose back as
shown unless otherwise ordered.



Model No. 738

Military Collar Bel-Reglan
Split sleeves with tabs. Slash
pockets. Stitched edges. Loose
back as shown unless other-
wise ordered.



Model No. 739
Descriptions Below

Model No. 739
Fashionable Reglan Topcoat
Patch pockets with flaps. Split
sleeves with cuffs. Stitched
edges. Loose back as shown
unless otherwise ordered.



Model No. 740
Descriptions Below

Model No. 740
Fly Front Bel-Reglan Topcoat
Convertible military collar. Split
sleeves with cuffs. Stitched
edges. Slash pockets. Loose
back as shown unless other-
wise ordered.



Model No. 736

Fashionable Three-Button Topcoat
Always popular — always correct. Patch pockets with
flaps. Cuffs on sleeves. Stitched edges.
Back back as shown unless otherwise ordered



Back of 736 and 740



Back of 736
Center Vent



Back of 742
Center Vent



Back of 743
Center Vent



Model No. 743

New "Knock-Around" Topcoat
Full cut, split, set-in
sleeves with tabs. Patch
pockets with flaps.
Stitched edges. Loose
back as shown unless
otherwise ordered.



Model No. 744

Description Below

Model No. 744

Young Men's Fly Front
Topcoat

Welt Breast Pocket, Form
fitting back as shown un-
less otherwise ordered.



Model No. 745

Description Below

Model No. 745

Three-Button Form
Fitting Topcoat
Welt breast pocket, Form
fitting back as shown un-
less otherwise ordered.



Model No. 741

Smart Double-Breasted Topcoat

(Top button does not button). Welt breast pocket, Form
fitting back as shown unless otherwise ordered.



Back of 741, 744, 745
Center Vent

Tailored Smartness in Spring Suits for Ladies



Back 777
No Vent

Model No. 777

Three-button sport style. Three patch pockets. Pleated puffed shoulders.

Back as shown unless otherwise ordered.

Skirt: Front inverted.



Back 775 and 776
No Vent

Model No. 775

Fashion's latest, the single-breasted open pleat waist-line style. Lower patch pockets. Pleated pulled shoulders. Sport back as shown unless otherwise ordered.

Skirt: Knife pleats in front.



Model No. 776

Double-breasted model of the open pleat waist-line style. Piped lower pockets. Pleated puffed shoulders. Sport back as shown unless otherwise ordered.

Skirt: Six goosed.



Model No. 778

Fashionable two-button peaked lapel style. Piped lower pockets.

Back as shown unless otherwise ordered.

Skirt: Six goosed.



Back 778, 779,
780 and 781
No Vent

Model No. 779

The very popular link button style. Peaked lapels.

Back as shown unless otherwise ordered.

Skirt: Four goosed.



Model No. 780

Modish three-button double-breasted style. Buttons on two lower buttons.

Back as shown unless otherwise ordered.

Skirt: Six goosed.



Model No. 781

Favorite two-button notch lapel style.

Back as shown unless otherwise ordered.

Skirt: Side inverted pleats.

New Trends in Ladies Tailored Topcoats



Back 784
Center Vent

Model No. 784

Three-button double-breasted, two buttons to button. A smart style.
Back as shown unless otherwise ordered.



Back 785
No Vent

Model No. 785

Favorite of fashion. The five-button finger-tip swagger coat. Pleated pulled shoulders. Cuffs on sleeves. Slanting patch pockets. Loose back as shown unless otherwise ordered.



Back 782 and 783
Center Vent

Model No. 782

Something new in smartness. The double-breasted open pleat style. Pleated pulled shoulders.
Back as shown unless otherwise ordered.

Model No. 783

A new open pleat style in a single-breasted model. Pleated pulled shoulders.
Back as shown unless otherwise ordered.



Back 786
Center Vent

Model No. 786

Stylish Bal-Raplan with convertible military collar. Split sleeves with cuffs. Slash pockets. Stitched edges.
Back as shown unless otherwise ordered.



Back 787
Center Vent

Model No. 787

Spotty single-breasted Raglan with all around belt. Split sleeves with cuffs. Slash pockets. Stitched edges.
Back as shown unless otherwise ordered.

SUGGESTIONS FOR FORMAL ATTIRE



Model No. 746

Double-Breasted
Summer Tuxedo.
Shawl Collar.



Model No. 747

Double-Breasted
Summer Tuxedo.
Peaked Lapels.
Piped Pockets.



Back of all Tuxedos
on this page.



Model No. 748

Peaked Lapel
Summer Tuxedo.
Piped Pockets.



Model No. 749

Shawl Collar
Summer Tuxedo.
Piped Pockets.



Model No. 750

Double-Breasted
Tuxedo. Silk Faced
to Edge.



V-220

Single-Breasted
Dress Vest with
rounded collar.



V-221

Single-Breasted
Dress Vest with
square collar.



V-222

Double-Breasted
Dress Vest
with collar.



V-223

Clerical Vest. When
ordering give size of
linen collar worn.



V-224

Casack Vest. When
ordering give size of
linen collar worn.



Model No. 751

Tuxedo. Peaked
Lapels. Silk Faced
to Edge.



Model No. 752

Full Dress for Formal
Evening Wear. Peaked
Lapels. Silk Faced
to Edge.



Model No. 753

Three-Button Clerical
Frock. Notch Lapels.



Model No. 754

Clerical Frock. When
ordering give size of
linen collar worn.



Model No. 755

Prince Albert Frock.
Peaked Lapels. Silk Faced
to Bottom.



Model No. 756

One-Button Cutaway
Frock. Peaked Lapels.

NEWEST SPORT BACKS



B-220
"Free-Swing" Back with pleat to belt on side. No Vent.



B-221
Pouch Back with belt. No Vent.



B-222
"Free-Swing" Pleats from Shoulder to waist. No Vent.



B-223
Gathered Pleats Above Belt. No Vent.



B-224
Inverted Pleat Pocket Above Belt. No Vent.



B-225
Sport Back With Yoke and Gathering from Yoke to Belt. No Vent.

These styles are for backs only. Do not omit front style wanted.



B-226
Form-Fitting Back for Drapery Models



B-227
Form-Fitting Back



B-228
Medium-Fitting Back



B-229
Conservative Back



B-230
Box Back with Center Seam



B-231
Box Back without Center Seam



V-210
Six-Button Vest Athletic Shoulders



V-211
Regular No Collar Vest Piped Pockets



V-212
Regular No Collar Vest Athletic Shoulders



V-213
Six-Button Vest Short Points



V-214
Tailored Vest—Six-Button Narrow lapels, flaps on lower pockets. Two pleats above lower pockets.



V-215
Notch Collar vest.



V-216
Six-Button Vest Long Points



V-217
Six-Button Vest Broken button not to bottom.



V-218
Double-Breasted Vest For trousers with high waistband.



V-219
Double-Breasted vest with collar. For high waisted trousers.

Any vest can be made with athletic shoulders. If wanted, specify on order blank.



P-220
Regular Trousers



P-221
Regular Cut Trousers Wide Waistband One-eighth top pockets.



P-222
High Rise English Trousers With Two Pleats



P-223
Drapery Trousers with two pleats. Narrow overlapping waistband with one button.



P-224
English Drapery Trousers. Two pleats. Full cut legs.



P-225
Novelty Pleated Trousers. High waist without seam. Belt loops lowered as illustrated.



P-226
Knickerbockers. Give measurement around leg below knee.

VARIOUS METHODS IN LINING COATS



One-Half Lined



Yoke Lined



One-Half Lined



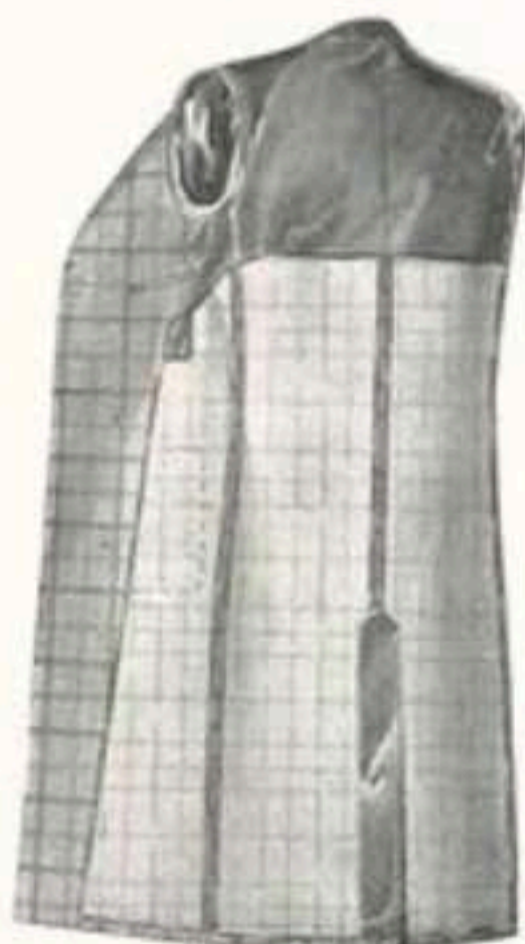
One-Half Lined



Three-Eighths Lined



Body Lined



Yoke Lined (Special)



One-Third Lined



One-Eighth Lined



One-Quarter Lined

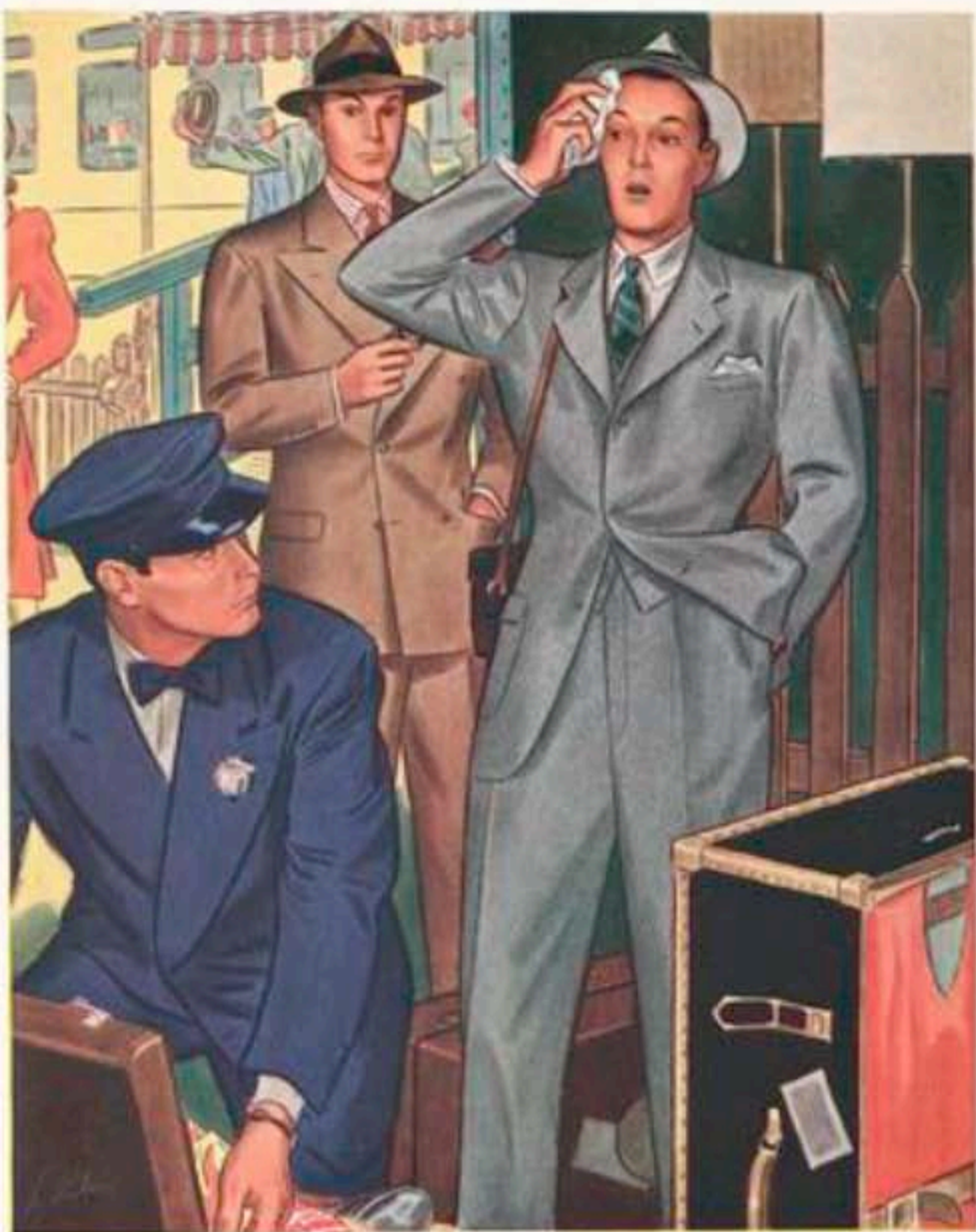


Three-Eighths Lined



One-Quarter Lined

A TREMENDOUS TRIFLE



The Talon® trouser fastener, small as it is, adds importantly to the whole appearance of your new suit. It insures the smoother, flatter closure you want — improves the drape and hang of the trousers — relieves you of any possibility of the embarrassment old fashioned fastenings often cause. That's why 96 men out of 100 prefer Talon fasteners — why we heartily recommend them as the finishing touch to the craftsmanship with which the fabric you have chosen is tailored.



The New Way — The Talon fastener, quick and dependable, makes a smoother, neater closure.



The Old Way — Five fumble fastenings bulge, bump, and too frequently cause embarrassment.

© 1936 W. A. GAYLOR, INC.

featured with... Detmer Woolens ... If Desired

229 FOURTH AVENUE NEW YORK

NEWEST
STYLES
FOR
MEN



ISSUED
SEMI-ANNUALLY

Published by
*Tailoring Arts
Publishing Co.*

Detmer Woolens

"Wear and Tailor Best"

VOLUME 30-2



© Green, 1936, Glickson Fashion Co., Inc., N. Y. C.

← **Model No. 901** →

Double-Breasted Style for Young Men

(Three buttons — two to button)

A leader in style and popularity.

Back at show unless otherwise ordered



Back of 901
No Vent



← **Model No. 902** →

Three Button Notch Lapel Style for Young Men
Distinguished by smart styling.

Back as shown unless otherwise ordered



Back of the



Copyright, 1940, G. K. F. F. Co., Inc., N. Y. C.

Model No. 901

Double-Breasted Style for Young Men

(Three buttons — two to button)

A leader in style and popularity.

Back as shown unless otherwise ordered



Back of 901
No Vent



← **Model No. 902** →

Three Button Notch Lapel Style for Young Men

Distinguished by smart styling.

Back as shown unless otherwise ordered



Back of 902
No Front



Back of 903 and 904
No Vent

← **Model No. 903** →

Two Button Notch Lapel Style
for Young Men

The latest styling in all details.

Back as shown unless otherwise ordered

← **Model No. 904** →

Two Button Peaked Lapel Style
for Young Men

Smartness is molded in every line.

Back as shown unless otherwise ordered



← **Model No. 905** →

Three Button Drape or Lounge Style
Ultra smart notch lapel model favored by
Young Men. PIPED LOWER POCKETS.

Back as shown unless otherwise ordered.

← **Model No. 906** →

Two Button Drape or Lounge Style
Distinctive peaked lapel model, popular
with Young Men. PIPED LOWER POCKETS.

Back as shown unless otherwise ordered.

WHEN ORDERING, NOTE FULLNESS ACROSS CHESTS AND IN SLEEVE
HEADS OF THESE MODELS. THEY TAILOR BEST IN SOFT FABRICS.



Back of 905 and 906
No Yoke



Model No. 907

Double-Breasted Drape or Lounge Style

Smart styling at its best. (Three buttons — two to button.) PIPED LOWER POCKETS.

Back as shown unless otherwise ordered



Back of 907 and 908
No Vest

Model No. 908

Three Button Drape or Lounge Style

A graceful young men's model. Featuring a new peaked lapel. PIPED LOWER POCKETS.

Back as shown unless otherwise ordered

WHEN ORDERING, NOTE FULLNESS ACROSS CHESTS AND IN SLEEVE HEADS OF THESE MODELS. THEY TAILOR BEST IN SOFT FABRICS.



Back of 909 and 910
Center Neck

← **Model No. 909** →

Two Button Notch Lapel
University Style
One of the campus favorites.

Back as shown unless otherwise ordered

← **Model No. 910** →

Three Button Notch Lapel
University Style
Popular with college men.

Back as shown unless otherwise ordered



← **Model No. 907** →

Double-Breasted Drape or Lounge
Style

Smart styling at its best. (Three buttons—
two to button.) PIPED LOWER POCKETS.

Back as shown unless otherwise ordered



Back of 907 and 908
No Front

← **Model No. 908** →

Three Button Drape or Lounge
Style

A graceful young men's model. Featuring
a new peaked lapel. PIPED LOWER
POCKETS.

Back as shown unless otherwise ordered

WHEN ORDERING, NOTE FULLNESS ACROSS CHESTS AND IN SLEEVE
HEADS OF THESE MODELS. THEY TAILOR BEST IN SOFT FABRICS.



← **Model No. 909** →

Two Button Notch Lapel
University Style

One of the campus favorites.

Back as shown unless otherwise ordered

← **Model No. 910** →

Three Button Notch Lapel
University Style

Popular with college men.

Back as shown unless otherwise ordered



Back of 909 and 910
Center View



Back of 912
Center Vent



Back of 913
No Vent



Model No. 912

Two Button Notch Lapel
Sports Style

Style and comfort smartly combined. Lower patch pockets with pinch pleats. Sport back with self pleats above half-belt line shown unless otherwise ordered.

Model No. 913

Four Button Notch Lapel
Sports Style

The very latest for sports wear. Open pleats at waist line. Lower pleated patch pockets with flaps. Sport back with half-belt and roll-pleat at each shoulder as shown unless otherwise ordered.



Model No. 911

Three Button Sports Style

Smart informality in a notch lapel model. Three patch pockets. Sport back with inverted pleat, half belt and pinch pleats as shown unless otherwise ordered.



Back of 911
No Vent



Back of 915
No Vest



Back of 916
No Vest



Model No. 915

Two Button, Peaked
Lapel Sports Style

A distinctive informal
model. Three patch
pockets. Stitched
edges. Finish back
with half belt
as shown unless
otherwise
ordered.

Model No. 916

Three Button Tab Collar
Sports Style

Latest notch lapels, with tab
collar. Patch pockets, lower ones
with flaps. Stitched edges. Yoke
back with pleats and half belt
as shown unless otherwise
ordered.



Back of 914
No Vest

Model No. 914

Two Button Double-Breasted Sports Style

Popular, and very smart. Three patch pockets, stitched
edges. Sport back with half belt and "Free Swing" pleats
as shown unless otherwise ordered.



← **Model No. 917** →

Medium Fitting Two Button Style
A natural fitting peaked lapel model for
business wear.

Back as shown unless otherwise ordered

← **Model No. 918** →

Medium Fitting Three Button Style
A notch lapel model, favored by business
men.

Back as shown unless otherwise ordered



Back of 917 and 918
See page



Back of 919 and 920
No Waist

Model No. 919

Conservative Two Button Notch
Lapel Style

Correctly designed for business wear.

Back as shown unless otherwise ordered.

Model No. 920

Conservative Three Button Notch
Lapel Style

Favored by well groomed business men.

Back as shown unless otherwise ordered.



Back of 921
Center Vent



Model No. 921

Young Men's Long Roll
"Chesterfield Style"

The new double-breasted model,
with lapels rolling to bottom but-
ton. NOTE: Fullness of chest and
sleeve heads. Piped lower pockets.

Back as shown unless otherwise ordered



Model No. 924

Conservative Three Button
Straight Front Style

An easy fitting notch lapel sack.

Back as shown unless otherwise ordered



Model No. 922

Young Men's Two Button
Rope Shoulder Style

Features smart peaked lapels.

Back as shown unless otherwise ordered



Model No. 925

Conservative Three Button
Double-Breasted Style

Comfortable, stylish and correct.

Back as shown unless otherwise ordered



Back of 924, 925 and 926
No Vent



Back of 922 and 923
No Vent



Model No. 923

Young Men's One Button
Peaked Lapel Style

Designed with graceful, long
rolling lapels.

Back as shown unless otherwise ordered



Model No. 926

Conservative Three Button
Stout Model

A correct notch lapel style.

Back as shown unless otherwise ordered



Model No. 927

Young Men's Two Button
Stout Model

Smartly styled with peaked lapels.

Back as shown unless otherwise ordered.

Model No. 928

Conservative Two Button
Stout Model

A comfortable notch lapel style.

Back as shown unless otherwise ordered.



Model No. 929

Three Button Double-Breasted Overcoat

A popular and stylish model. Welt breast pocket. Stitched edges. Half belt back as shown unless otherwise ordered.



Back of 929
Half Belt

Model No. 930

Four Button Double-Breasted Overcoat

The fashionable polo model, made to button on three buttons. Split sleeves with tabs, stitched edges. Patch pockets with flaps. Back with half belt and inverted pleat as shown unless otherwise ordered.



Back of 930
Inverted Pleat Vest



← **Model No. 931** →

Three Button Double-Breasted Ulster
Assures warmth and good style. Convertible collar. Patch pockets with flaps. Cuffs on sleeves, stitched edges. Back with half belt as shown unless otherwise ordered.

← **Model No. 932** →

Stylish Three Button Double-Breasted Overcoat

Welt breast pocket. (Two buttons only to button.) Form fitting back as shown unless otherwise ordered.



Back of 931
Curtain View



Back of 932
Curtain View



Back of 934
Center Vent



Model No. 934

Bal-raglan with Military
Collar

Split sleeves with tab slash pockets, stitched edges; loose back as shown unless otherwise ordered.



Back of 935
Center Vent



Model No. 935

Smart Raglan Overcoat
or Topcoat

Patch pockets with flaps. Split sleeves with cuffs, stitched edges. Loose back as shown unless otherwise ordered.



Model No. 933

Three Button Double-Breasted Belted Raglan
(Top button does not button.) Smart style, with plenty of
warmth. Split sleeves with cuffs, slash pockets.

Back as shown unless otherwise ordered



Back of 933
Center Vent



Back of 937
Center Vent

Model No. 937

"Knock about" Overcoat or Topcoat

Full cut, split, set in sleeves with tabs. Patch pockets with flaps. Slit-hood edges. Loose back as shown unless otherwise ordered.



Back of 938
Center Vent



Model No. 938

Fly Overcoat or Topcoat

Convertible military collar. Very full cut, split set-in sleeves with cuffs. Slit-hood edges. Slit pockets. Very loose back as shown unless otherwise ordered.



Back of 936
Center Vent

Model No. 936

Stylish Three Button Overcoat or Topcoat

Fashionable for any occasion. Patch pockets with flaps. Cuffs on sleeves. Welt breast pocket. Slit-hood edges. Box back as shown unless otherwise ordered.



Back of 940
Center Vent



Back of 941
Center Vent



Model No. 941

Three Button Form Fitting
Overcoat or Topcoat

Walt breast pocket, Form fitting back as shown unless otherwise ordered.



Model No. 942

Fly Front Bal-Raglan

Convertible military collar, Split sleeves with cuffs, stitched edges, Slash pockets, Loose back as shown unless otherwise ordered.



Back of 942
Center Vent



Model No. 943

Fly Front Chesterfield
Overcoat or Topcoat

Walt breast pocket, Medium fitting back as shown unless otherwise ordered.



Back of 943
Center Vent



Back of 939
Front Half Belt

Model No. 939

Young Men's Three Button Double-Breasted
Ulsterette

[Top button does not button.] A snappy and popular style. Walt breast pocket, lower slash pockets, Split sleeves with cuff, Stitched edges. Form fitting back with half belt as shown unless otherwise ordered.

VARIOUS METHODS IN LINING COATS



One-Half Lined



Yoke Lined



One-Half Lined



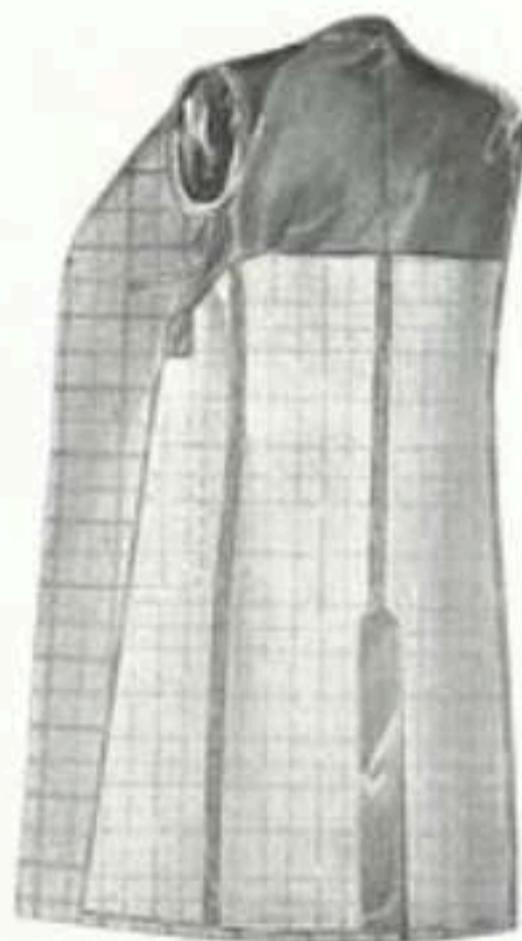
One-Half Lined



Three-Eighths Lined



Body Lined



Yoke Lined (Special)



One-Third Lined



One-Eighth Lined



One-Quarter Lined



Three-Eighths Lined



One-Quarter Lined

CORRECT MODELS FOR FORMAL ATTIRE



Model No. 944
Tuxedo, Peaked
Lapels, Silk Faced to
Edge.



V-320
Single-Breasted
Dress Vest with
rounded collar.



V-321
Single-Breasted
Dress Vest with
square collar.



V-322
Double-Breasted
Dress Vest
with collar.



Back of 944, 945, 946,
947, 949 and 950.
No vent.



Model No. 945
Double-Breasted
Tuxedo, Silk Faced
to Edge.



Model No. 946
Double-Breasted
Tuxedo, Piped Pock-
ets, Silk Faced to
Edge.



Model No. 947
Tuxedo, Notch Lapels,
Silk Faced to Edge.



Model No. 948
Full Dress for Formal
Evening Wear, Peak-
ed Lapels, Silk Faced
to Edge.



Model No. 949
Show Collar Tuxedo,
Piped Pockets, Silk
Faced to Edge.



Model No. 950
Double-Breasted
Show Collar Tuxedo,
Piped Pockets, Silk
Faced to Edge.



Model No. 951
Three-Button Clerical
Sack, Notch Lapels.



Model No. 952
Clerical Frock, When
ordering give size of
linen collar worn.



Model V-323
Clerical Vest, When
ordering give size of
linen collar worn.



V-324
Cowlick Vest, When
ordering give size of
linen collar worn.



Model No. 953
One-Button Cutaway
Frock, Peaked Lapels.



Model No. 954
Prince Albert Frock,
Lapels silk faced to
buttonholes.

NEWEST SPORT BACKS



B-330
"Free-Swing" Back with pleat to belt on sides. No Vest.



B-331
Fitch Back with half belt. No Vest.



B-332
"Full Blade" Back with soft pleat at each shoulder. Center Vent.



B-333
Gathered Pleats Above Belt. No Vest.



B-334
Inverted Pleat Fitches Above Belt. No Vest.



B-335
Yoke Back with shirring and No Belt. No Vest.

These styles are for backs only. Do not omit front style wanted.



B-336
Form-Fitting Back for Draped Models



B-337
Form-Fitting Back



B-338
Medium-Fitting Back



B-339
Conservative Back



B-340
Box Back with Center Seam



B-341
Box Back without Center Seam



V-310
Six-Button Vest Athletic Shoulders



V-311
Regular No Collar Vest Piped Pockets

Any vest can be made with athletic shoulders. If wanted, specify on order.



V-312
Regular No Collar Vest Athletic Shoulders



V-313
Six-Button Vest Short Points



V-314
Novelty waist seam vest with pinch pleats.



V-315
Notch Collar Vest



V-316
Six-Button Vest Long Points



V-317
Six-Button Vest Bottom button set to button.



V-318
Double-Breasted Vest For trousers with high waistband



V-319
Double-Breasted vest with collar. For high waisted trousers.



P-350
Regular Trousers



P-351
Regular Cut Trousers Wide Waistband. One-eight top pockets.



P-352
Single Pleat Trousers. Overlapping waistband with two buttons.



P-353
Drape Trousers with two pleats. Narrow overlapping waistband with one button.



P-354
English Drape Trousers. Two pleats. Full cut legs.



P-355
Novelty Pleated Trousers. High waist without seam. Belt loops lowered as illustrated.



P-356
Knickerbocker. Give measurement around leg below knee.

STUNNING MODELS

in

LADIES TAILORED SUITS



Model No. 926

Stylish six-button style. Short peaked lapels. Pleated puffed shoulders. Back as shown, unless otherwise ordered. Skirt: Six gored.



Back of 926 and 927 No Vest



Model No. 927

Smart two-button peaked lapel style. Pleated puffed shoulders. Back as shown, unless otherwise ordered. Skirt: Side inverted pleats.

Model No. 928

Popular two-button notch lapel style. Fined lower pockets. Back as shown, unless otherwise ordered. Skirt: Front inverted pleat.



Back of 928, 929 and 930 No Vest



Model No. 929

The favorite six-button model. Wide peaked lapels. Slanting welt pockets. Back as shown, unless otherwise ordered. Skirt: Four Gored.



Model No. 930

Modish three-button peaked lapel style. Smart open pleats at waist in front. Pleated puffed shoulders. Sport back as shown, unless otherwise ordered. Skirt: Six gored.



Back of 930 No Vest



Model No. 931

Fashionable two-button double-breasted model. Fined lower pockets. Back as shown, unless otherwise ordered.

NEW SMARTNESS in LADIES TAILORED TOPCOATS



Back of 992
Center Vent

Model No. 992
The very latest double-breasted style. Four buttons above all around tie belt. Pleated pulled shoulders. Cuffs on sleeves. Slash pockets. Stitched edges.
Back as shown, unless otherwise ordered.



Back of 995
Center Vent

Model No. 995
Fashionable single-breasted model. Smart peaked lapels. Close pleats at waist in front. Pleated pulled shoulders.
Back as shown, unless otherwise ordered.



Back of 993
Center Vent

Model No. 993
Popular three-button double-breasted style. Top button does not button.
Back as shown, unless otherwise ordered.



Back of 994
No Vent

Model No. 994
Swagger military collar model. Pleated pulled shoulders. Storm tabs on sleeves. Slash pockets. Stitched edges.
Back as shown, unless otherwise ordered.



Model No. 996

Smart finger tip model with military collar. Full cut sleeves with pleated pulled shoulders. Lower patch pockets with buttoned flaps.
Back as shown, unless otherwise ordered.



Back of 996
No Vent



Back of 997
Center Vent

Model No. 997
Stylish Big Boylar with military collar. Split sleeves with cuffs. Stitched edges. Patch pockets with flaps.
Back as shown, unless otherwise ordered.



Well, how about it, Mister!



The New Thing—The Talon fastener, quick and dependable, makes a smoother, easier closure.



The Old Thing—Five button fastenings bulge, gap and too frequently cause embarrassment.

Are you going to take chances with trouser fasteners you can't count on — or are you going to have us tailor your suit with a dependable Talon* fastener? It's a real convenience and it gives you a never-questionable appearance. Join the millions of men who now have Talon slide fasteners on their trousers — and we know you will join them in their emphatic "never again!" to any other fly closure. Well — how about it, Mister?

featured with... **Detmer Woolens** ... If Desired

229 FOURTH AVENUE NEW YORK

NEWEST
STYLES
FOR
MEN



ISSUED
SEMI-ANNUALLY

PUBLISHED FOR
*Tailoring Arts
Publishing Co.*

Detmer Woolens

“Wear and Tailor Best”

VOLUME 31-1-A



Model No. 101

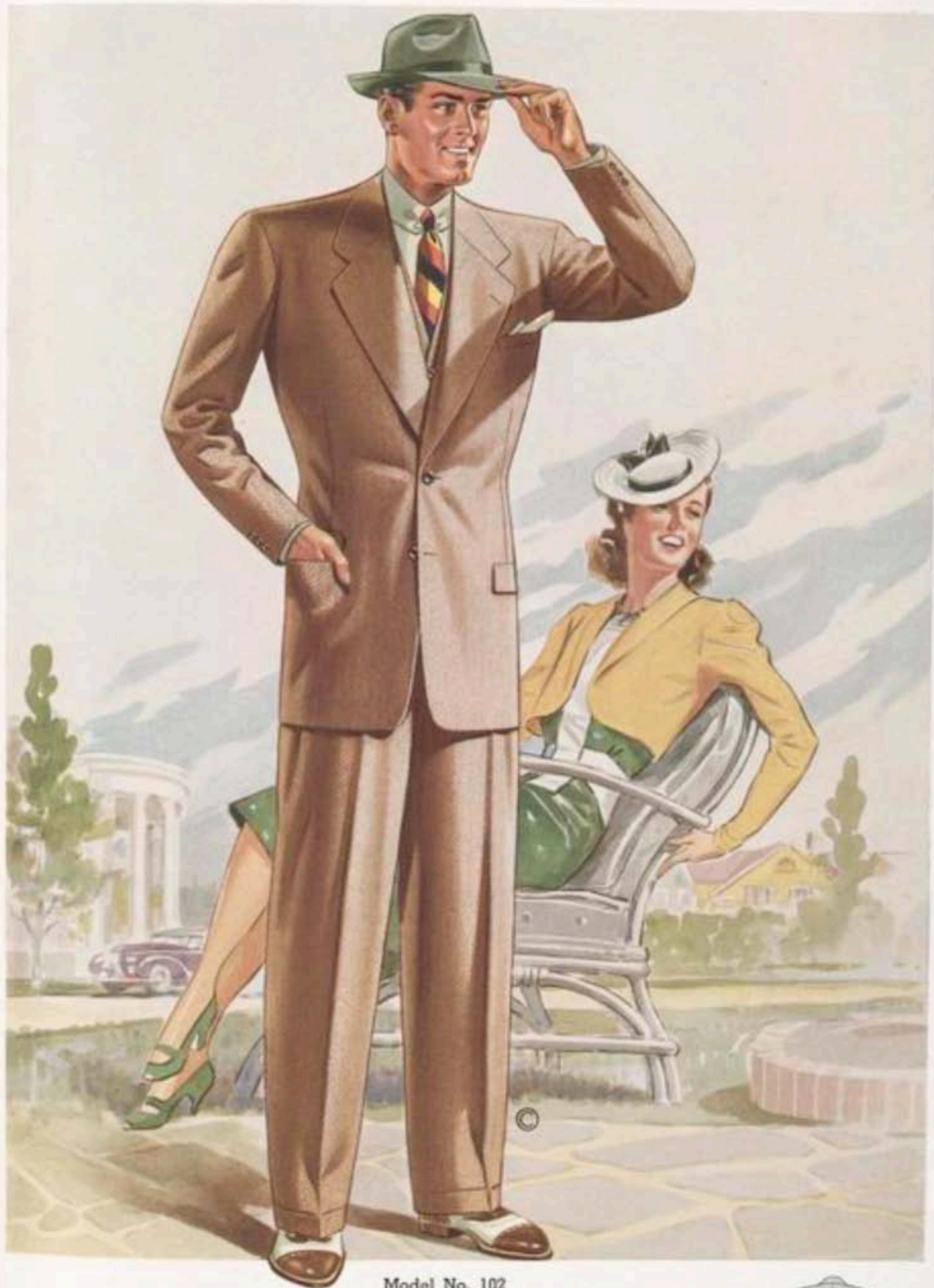
Young Men's Three-Button Notch Lapel Style

Fashion's newest favorite

Back as shown unless otherwise ordered



Back of 101
No Vest



Model No. 102

Young Men's Two-Button Notch Lapel Style

A smartly designed style leader

Back as shown unless otherwise ordered



Back of 102
No Vent



Model No. 109

Young Men's Two-Button
Double-Breasted Style

Correct in style, and very popular

Back as shown unless otherwise ordered



Back of 110
Center Vent

Model No. 110

Young Men's Two-Button
Double-Breasted Style
(Buttons on lower button only)

The ultra-smart in double-breasted,
PIPED LOWER POCKETS—NO FLAPS

Back as shown unless otherwise ordered

Model No. 108

Young Men's Three-Button
Double-Breasted Style
(Two buttons to button)

Lower patch pockets are featured in this stylish model

Back as shown unless otherwise ordered



Back of 108 and 109
No Vent



Model No. 114

Young Men's Three-Button Lounge Style

A new notch lapel model
PIPED LOWER POCKETS - NO FLAPS

Back as shown unless otherwise ordered

Model No. 115

Young Men's Double-Breasted
 Lounge Style
 (Three buttons—two to button)

Featuring the newest style trend
PIPED LOWER POCKETS - NO FLAPS

Back as shown unless otherwise ordered

Model No. 116

Young Men's Two-Button
 Lounge Style

A fashionable notch
 lapel model
**PIPED LOWER
 POCKETS - NO FLAPS**

*Back as shown unless
 otherwise ordered*



Back of all models
 on this Page
 No Vest

NOTE: On these Lounge Models waist lines are easier fitting than the Drape Models. They also have some fullness in chests and sleeve heads.



Back of 121
No Vent



Model No. 121

Two-Button Sports Style

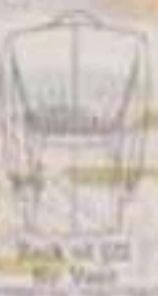
A distinctive model with notch lapels. Three patch pockets. Pinch back with half belt as shown unless otherwise ordered.



Model No. 122

Double-Breasted Sports Style

(Three buttons - two to button). Two lower patch pockets. Sport back with pleats above half-belt as shown unless otherwise ordered.



Back of 122
No Vent

Model No. 120

Three-Button Sports Style

Informally smart notch lapel model. Three patch pockets. Sport back with inverted pleat, half belt, and pinch pleats as shown unless otherwise ordered.



Back of 120
No Vent



Model No. 124

Three-Button Sports Style

A well designed notch lapel model. Lower patch pockets with pleats. Stitched edges. Finch back with half belt and "Tree Swing" pleats as shown unless otherwise ordered.



Back of 125
No Vest



Model No. 125

Two-Button Sports Style

Featuring smart semi-peaked lapels. Three pleated patch pockets. Stitched edges. Sport back with knife pleat from shoulder to belt on each side as shown unless otherwise ordered.



Back of 124
No Vest

Model No. 123

Two-Button Sports Style

An informal model with notch lapels. Three patch pockets. Lower ones with flaps. Stitched edges. Sport back with half belt and "Roll Swing" pleats as shown unless otherwise ordered.



Back of 123
No Vest



Model No. 132

Medium Fitting
Double-Breasted Style
The popular
two-button model
Back as shown unless
otherwise ordered

Model No. 130

Medium Fitting Three-Button Style
A notch lapel model for business men
Back as shown unless otherwise ordered

Model No. 131

Medium Fitting Two-Button Style
Notch lapels feature this smart model
Back as shown unless otherwise ordered



Back of all models
on this Page
No Vest



Back of 147
and 149
Center Vent



Model
No. 148

Fashionable
Single-
Breasted
Topcoat

The popular
three-button
model. Welt
breast pocket. Form fitting
back as shown unless
ordered
otherwise



Model No. 149

Fly Front Chesterfield Topcoat
Welt breast pocket. Medium
fitting back as
shown unless
otherwise
ordered



Back of 149
Center Vent

Model No. 147

Stylish Fly Front Topcoat
Welt breast pocket. Form fitting
back as shown unless otherwise
ordered.



Model No. 145

Smart Single-Breasted Topcoat

A universal favorite. Welt breast pocket. lower
patch pockets with flaps. Split sleeves with
collar. Stitched edges. Box back as shown unless
otherwise ordered.

Model No. 146

Stylish Double-Breasted Drape Topcoat

Popular three-button model, two to buttons
Back as shown unless otherwise ordered



Back of 145



Back of 146

Ladies Tailored Topcoats in Correct New Styles



Model No. 131
Very New Fly Front
Swapper Coat. Smart
Military Collar Style.
Split sleeves with
cuffs. Slant pockets.
Stitched edges. Lower
back at three angles
otherwise ordered.

Back of 131
Center Vent



Back of 132
Center Vent

Model No. 132
Dainty Form-Fitting
Model. Three-Button
Notch Lapel Style.
Form-Fitting Back at
three angles otherwise
ordered.



Back of 133
Center Vent

Model No. 133
Fashionable. Smart
Four-Button-Double-
Breasted. Padded
lapels. Lower
patch pockets. Piped
collar. Back at three
angles otherwise
ordered.



Back of 134
Center Vent

Model No. 134
Smart. Two-Button
Double-Breasted.
Draping flaps on
lower pockets. Form-
fitting back at three
angles otherwise
ordered.



Model No. 135
Model. Three-Button
Swapper Style. Con-
vertible military col-
lar. Split sleeves with
buttoned tabs. Slant
pockets. Stitched
edges. Lower back at
three angles otherwise
ordered.



Back of 135
Center Vent



Back of 136
Center Vent

Model No. 136
Popular Single-
Breasted Design. Split
sleeves with cuffs.
Patch and flap pockets.
Stitched edges.
Lower back at three
angles otherwise
ordered.

NEWEST SPORT BACKS



B-430
"Free-Swing" Back with pleat to belt on side. No Vent.



B-431
Pinch Back with half belt. No Vent.



B-432
"Roll Neck" Back with soft pleat on each shoulder. Center Vent.



B-433
Gathered Pleats Above Belt. No Vent.



B-434
Inverted Pleat Pinches Above Belt. No Vent.



B-435
"Free-Swing" Pleats from Shoulder to waist. No Vent.

These styles are for backs only. Do not omit front style wanted.



B-436
Form-Fitting Back for Drapé Models.



B-437
Form-Fitting Back.



B-438
Medium-Fitting Back.



B-439
Conservative Back.



B-440
Box Back with Center Seam.



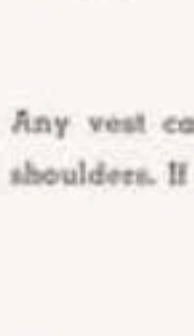
B-441
Box Back without Center Seam.



V-410
Six-Button Vest Athletic Shoulders.



V-411
Regular No-Collar Vest Fixed Pockets.



Any vest can be made with athletic shoulders. If wanted, specify on order.



V-412
Regular No-Collar Vest Athletic Shoulders.



V-413
Six-Button Vest Short Points.



V-414
Tattail Vest - Six-Button Button button not to button. Zipper on lower pockets. Two pleats above lower pockets.



V-415
Notch Collar Vest.



V-416
Six-Button Vest Long Points.



V-417
Six-Button Vest Bottom button not to button.



V-418
Double-Breasted Vest for trousers with high waistband.



V-419
Double-Breasted Vest with collar for high waisted trousers.



P-450
Regular Trousers.



P-451
Regular Cut Trousers. Wide Waistband. One-eighth top pockets.



P-452
Single Pleat Trousers. Overlapping waistband with two buttons.



P-453
Drapé Trousers with two pleats. Narrow overlapping waistband with one button.



P-454
English Drapé Trousers. Two pleats. Full cut legs.



P-455
Novelty Pleated Trousers. High waist without seam. Belt loops lowered as illustrated.

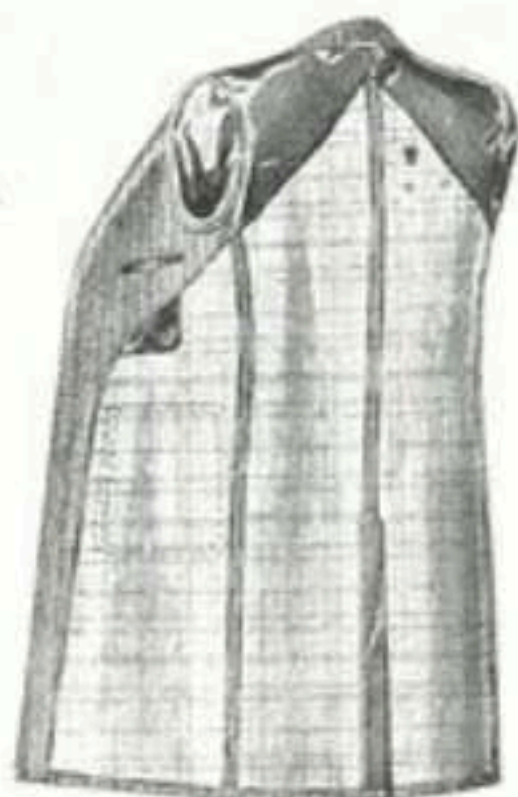


P-456
Knickerbockers. Give measurement around leg below knee.

VARIOUS METHODS IN LINING COATS



One-Half Lined



Yoke Lined



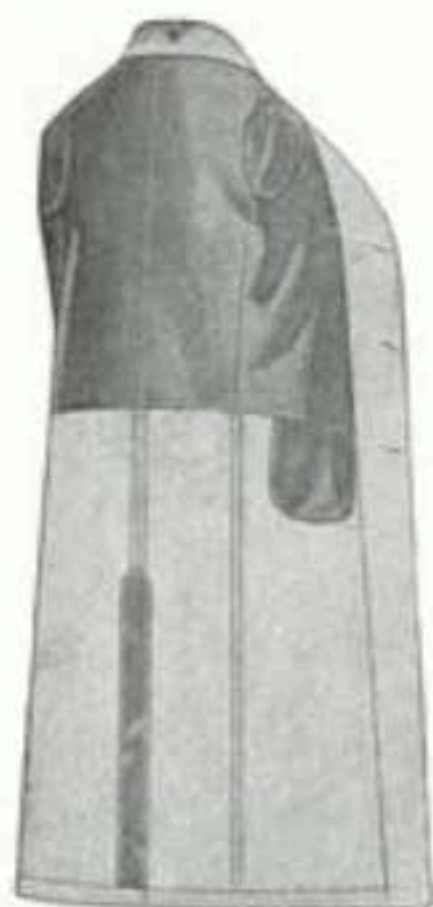
One-Half Lined



One-Half Lined



Three-Eighths Lined



Body Lined



Yoke Lined (Special)



One-Third Lined



One-Eighth Lined



One-Quarter Lined



Three-Eighths Lined



One-Quarter Lined



WATCH OUT MISTER!



The New Way

The Talon slide fastener is quick and dependable... gives you a smoother, neater closure.



The Old Way

Fly fumble-fastenings bulge, bump, and will all-too-frequently cause you embarrassment.

The trouser fly is one part of your suit that must be neat and secure at all times. You don't want bulges and gaps to mar your appearance — and most of all, you don't want any possibility of embarrassing fastening failure. That's why we recommend Talon* trouser fasteners. Because it's specifically designed for the purpose, the Talon trouser fastener is neater, smoother and locks more securely. And Talon is the only slide fastener that has proved its dependability in hundreds of millions of garments over a long period of years. In providing Talon slide fasteners, we are giving you the best that money can buy. So just give us the signal by saying "Put on a Talon trouser fastener, please."

Pat. U. S. Pat. Off. (1948-1951)

featured with... Detmer Woolens . . . If Desired

229 FOURTH AVENUE, NEW YORK

NEWEST
STYLES
FOR
MEN



ISSUED
SEMI-ANNUALLY

DESIGNED FOR
*Tailoring Arts
Publishing Co.*

Detmer Woolens

“Wear and Tailor Best”

VOLUME 31-1-B



Model No. 103

Young Men's Three-Button
Double-Breasted Style
(Two buttons to button)
Smartly styled, and very popular
Back as shown unless otherwise ordered

Model No. 104

Young Men's Three-Button
Peaked Lapel Style
Favored by many smart dressers
Back as shown unless otherwise ordered



Back of 103 and 104
No Vest



Model No. 107

Young Men's Four-Button
Notch Lapel Style
Fashion's latest for smart dressers
Back as shown unless otherwise ordered



Model No. 106

Young Men's One-Button
Peaked Lapel Style
Featuring long, graceful lapels
Back as shown unless otherwise ordered

Model No. 105
Young Men's Two-Button Peaked Lapel Style

A very distinctive model
Back as shown unless otherwise ordered



Back of all models
on this page
No Vent



Model No. 113

Young Men's Double-Breasted Drape Style
(Three Buttons - Two to button). Designed with smartness and character.
PIPED LOWER POCKETS - NO FLAPS

Back as shown unless otherwise ordered.

Model No. 111

Young Men's Two-Button Drape Style

Will appeal to smart dressers
Latest style peaked lapels
PIPED LOWER POCKETS - NO FLAPS

Back as shown unless otherwise ordered.



Back of all models on this page
No Vent

Model No. 112

Young Men's Three-Button Drape Style

A distinctive notch lapel model
PIPED LOWER POCKETS - NO FLAPS

Back as shown unless otherwise ordered.

NOTE: When ordering, observe that these drape models have fullness across chests and in sleeve heads. They tailor best in the softer fabrics.



Model No. 119

Four-Button University Style
 Latest favorite of the campus.
 Notch Lapels. Flap on breast pocket.
Back as shown unless otherwise ordered

Model No. 117

Three-Button University Style
 The leading college model. Notch Lapels.
Back as shown unless otherwise ordered



Back of all models on this page No. 117

Model No. 118

Two-Button University Style
 Popular with college men. Notch Lapels.
Back as shown unless otherwise ordered



Model No. 128

Young Men's Two-Button
Hot Weather Style
Correct notch lapel model
Three patch pockets
*Back as shown unless
otherwise ordered.*



Back of 128
No Vest



Model No. 129

Conservative Two-Button
Hot Weather Style
Style and comfort in sum-
mer wear. Notch lapels.
Three patch pockets.
*Back as shown unless
otherwise ordered.*



Model No. 126

Young Men's Three-Button
Hot Weather Style
Smartness and comfort for summer wear
Notch lapels. Three patch pockets.
Back as shown unless otherwise ordered.

Model No. 127

Young Men's Double-Breasted
Hot Weather Style
A smart two-button model
Three patch pockets
Back as shown unless otherwise ordered.



Back of 126, 127
and 129
No Vest



Model No. 135

Conservative Three-Button
Straight Front Style
An easy fitting notch
lapel model
Back as shown unless
otherwise ordered.



Model No. 136

Conservative Three-Button
Double-Breasted Style
An easy fitting model
Back as shown unless
otherwise ordered.



Model No. 133

Conservative Three-Button
Notch Lapel Style
Stylish, comfortable and correct
Back as shown unless otherwise ordered

Model No. 134

Conservative Two-Button
Notch Lapel Style
Assures both comfort and style
Back as shown unless otherwise ordered



Back of all models
on this page
No Vent



Model No. 138

Conservative Stout
Two-Button Style

A comfortable notch
lapel model

Back as shown unless
otherwise ordered

Model No. 139

Conservative Stout
Three-Button Style

The authentic notch
lapel model

Back as shown unless
otherwise ordered

Model No. 137

Young Men's Stout Two-Button Style

A smart peaked lapel model

Back as shown unless otherwise ordered



Back of all Models
on this Page
No Vent



Back of 142
Center Vent



Model
No. 143

Fly Front
Bal-Raglan
Topcoat

Convertible
Military
Collar
Split sleeves
with tabs.
Slash pockets,
and stitched
edges. Loose
back as
shown unless
otherwise
ordered.



Model No. 144

Young Men's Double-Breasted
Deape Topcoat

Very dressy three-button
two to button.
Note fullness in
chest and sleeve-
heads. Slash poc-
kets. Form fitting
back as shown
unless otherwise
ordered.

Model No. 142

Military Collar Bal-Raglan
Topcoat

Split sleeves with cuffs. Slash
pockets, and
stitched edges.
Loose back as
shown unless
otherwise
ordered.



Model No. 140

Fly Front Topcoat

Fashion's Favorite, with convertible military
collar. Set-in split sleeves, full cut and finished
with cuffs. Slash pockets. Stitched edges. Very
loose back as shown unless otherwise ordered.



Back of 140
No Vent

Model No. 141

Stylish Raglan Topcoat

A swagger notch lapel model. Patch pockets
with flaps. Split sleeves with cuffs. Stitched
edges. Loose back as shown unless otherwise
ordered.



Back of 141
Center Vent



Go Formal

IN AUTHENTIC
EVENING
WEAR



Model No. 150
Double-breasted tuxedo.
Lapels silk faced to edge.



Model No. 151
Tuxedo, single-breasted.
Peaked lapels, silk faced
to edge. Piped pockets.



Back for all
tuxedos
on this
page.



Model No. 152
Double-breasted summer
tuxedo. Shawl collar.
Piped pockets.



Model No. 153
Shawl collar summer
tuxedo. Piped pockets.



Model V-420
Double-breasted
dress vest with
collar.



Model No. 154
Double-breasted tuxedo.
Lapels silk faced to edge.
Piped pockets.



Model No. 155
Double-breasted tuxedo.
Rolled to bottom button.
Lapels silk faced to edge.
Piped pockets.



Model No. 156
Double-breasted shawl
collar tuxedo. Lapels silk
faced to edge. Piped
pockets.



Model No. 157
Full dress for formal
evening wear. Lapels
silk faced to edge.



Model V-421
Single-breasted
dress vest with
rounded collar.



Model No. 158
Three-Button Clerical
Frock. Notch
lapels.



Model No. 159
Clerical Frock.
When ordering
give size of linen
collar worn.



Model V-423
Clerical Vest.
When ordering
give size of linen
collar worn.



V-424
Cassock Vest.
When ordering
give size of linen
collar worn.



Model No. 160
One-Button Cut-
away Frock.
Peaked lapels.



Model No. 161
Prince Albert Frock.
Lapels silk faced
to buttonholes.

WATCH OUT MISTER!



The New Way

The Talon slide fastener is quick and dependable... gives you a smoother, neater closure.



The Old Way

Five fumble-fasteners bulge, bump, and will all-too-frequently cause you embarrassment.

The trouser fly is one part of your suit that must be neat and secure at all times. You don't want bulges and gaps to mar your appearance — and most of all, you don't want any possibility of embarrassing fastening failure. That's why we recommend Talon* trouser fasteners. Because it's specifically designed for the purpose, the Talon trouser fastener is neater, smoother and locks more securely. And Talon is the only slide fastener that has proved its dependability in hundreds of millions of garments over a long period of years. In providing Talon slide fasteners, we are giving you the best that money can buy. So just give us the signal by saying "Put on a Talon trouser fastener, please."

*TALON IS A TRADE MARK OF TALON, INC.

featured with... Detmer Woolens ... If Desired

229 FOURTH AVENUE, NEW YORK

NEWEST
STYLES
FOR
MEN



ISSUED
SEMI-ANNUALLY

PUBLISHED FOR
*Tailoring Arts
Publishing Co.*

Detmer Woolens

“Wear and Tailor Best”

VOLUME 31-2-A



Model No. 201

YOUNG MEN'S TWO-BUTTON NOTCH LAPEL SACK

*Smartness Personified — for Popularity
Back as Shown Unless Otherwise Ordered.*



Back 201
No Vent



Model No. 203

YOUNG MEN'S THREE-BUTTON DOUBLE-BREASTED SACK

(Two Buttons Only To Bottom)

Smartly Designed — Cloverly Cut

Back as Shown Unless Otherwise Ordered



Back 203
and 204
204 VENT

Model No. 204

YOUNG MEN'S SMART DOUBLE-BREASTED SACK

Lapels Rolling to Bottom Button

Lower Pipoid Pockets

NOTE: Loose Button Only Buttons

Back as Shown Unless Otherwise Ordered



† **Model No. 214**
 Three-Button Sports Model
 Notch Lapels
 Lower Patch Pockets
 with Flaps
 Back with Half Belt as
 Shown Unless Other-
 wise Ordered

Model No. 215 †
 Double-Breasted Sports Model
 Three Patch Pockets
 Lower with Flaps
 Back with Half Belt as
 Shown Unless Other-
 wise Ordered

Model No. 213
 STYLISH TWO-BUTTON SPORTS ENSEMBLE
 Notch Lapels Three Plain Patch Pockets
 Specify whether trousers to match coat are wanted
 Back as Shown Unless Otherwise Ordered



← **Model No. 221**
 Four-Button University Model
 Back with Short Center Vent as Shown



Model No. 219
NEWEST THREE-BUTTON UNIVERSITY MODEL
 A Correct Style for College Men
Back with Short Center Vent as Shown
Unless Otherwise Ordered



Model No. 220
LATEST TWO-BUTTON UNIVERSITY ENSEMBLE
 Another College Favorite
Specify Whether Trousers to Match Coat are Wanted
Back with Short Center Vent as Shown
Unless Otherwise Ordered

Sharing Screenshot
 A link to your screenshot has been copied to your clipboard (click to view).

A Group of Conservative Models



Model No. 227
 Three-Button Straight Front
 Conservative Sack
 Also Made with Two
 Buttons (If Desired)
 Back as Shown Unless
 Otherwise Ordered



Model No. 228
 Three-Button Double-Breasted
 Conservative Sack
 Back as Shown Unless
 Otherwise Ordered



Model No. 225
 FASHIONABLE THREE-BUTTON CONSERVATIVE
 SACK
 Notch Lapels
 Smartly Combining Style and Comfort
 Back as Shown Unless Otherwise Ordered





Model No. 226
 APPROPRIATE TWO-BUTTON CONSERVATIVE
 MODEL
 Notch Lapels
 Comfortable Yet Smart and Stylish
 Back as Shown Unless Otherwise Ordered



Model No. 235
 Three-Button Double-
 Breasted Ulster -
 Raglan
 Warm Fur
 Multi-Pockets with Cuffs
 Back as Shown Unless
 Otherwise Ordered



Mark 235
 Ulster Style



Model No. 236
 Three-Button Double-
 Breasted Ulster
 Light Weight with Cuffs
 Lower Pockets
 with Flaps
 Notched Lapels and Pockets
 Back as Shown Unless
 Otherwise Ordered



Mark 236
 Ulster Style



Model No. 233
 Three-Button Double-
 Breasted Ulster
 Back All-around
 Warm Fur
 Multi-Pockets with Cuffs
 Back as Shown Unless
 Otherwise Ordered



Mark 233
 Ulster Style



Model No. 234
 Three-Button Double-
 Breasted Ulster
 Lower Pockets
 with Flaps
 Notched Lapels and Pockets
 Back as Shown Unless
 Otherwise Ordered



Mark 234
 Ulster Style



Model No. 227
 Three-Button Straight Front
 Conservative Sack
 Also Made with Two
 Buttons if Desired
 Back as Shown Unless
 Otherwise Ordered



Model No. 228
 Three-Button Double-Breasted
 Conservative Sack
 Back as Shown Unless
 Otherwise Ordered

*A Group of
 Conservative Models*



Model No. 225
 FASHIONABLE THREE-BUTTON CONSERVATIVE
 SACK
 Notch Lapels
 Smartly Combining Style and Comfort
 Back as Shown Unless Otherwise Ordered



Model No. 226
 APPROPRIATE TWO-BUTTON CONSERVATIVE
 MODEL
 Notch Lapels
 Comfortable Yet Smart and Stylish
 Back as Shown Unless Otherwise Ordered



Back for All Models
 on This Page
 No Vent

Pairing Request from:



To pair with the device, c

To reject pairing with the



← **Model No. 235**

Three-Button Double-Breasted Wrap-around Raincoat

Blank Pockets
Sleeve Slits with Cuffs
Back as Above 1 unless Otherwise Indicated



Back 235
Central Seam



Back 236
Central Seam

Model No. 236 →

Three-Button Double-Breasted Raincoat

Eight Slits with Cuffs
Lower Patch Pockets with Flaps
Stitched Edges and Pockets
Back as Above 1 unless Otherwise Indicated



Very loose model

Very loose model



Back 233
Central Seam

→ **Model No. 233**

Three-Button Double-Breasted Style
Sleeve All-around
Blank Pockets
Sleeve Slits with Cuffs
Back as Above 1 unless Otherwise Indicated



Back 234
Central Seam

← **Model No. 234**

Three-Button Double-Breasted Ulster

Lower Patch Pockets with Flaps
Stitched Edges and Pockets
Back as Above unless Otherwise Indicated



Model No. 214
 Popular Three-Button
 Single-Breasted
 Form-Fitting Model
 Notch Lapels
 Back as Shown Unless
 Otherwise Indicated



Back 214
 Center Vent



Back 215
 Center Vent

Model No. 215
 Smart
 Fly Front Style
 Notch Lapels
 Back as Shown
 Unless Other-
 wise Indicated



Back 211
 Center Vent

Model No. 211
 Stylish Three-Button Double-
 Breasted Dress Model
 (Two Buttons Only to Bottom)
 Welt Breast Pocket
 Made without Notch Collar
 and Back as Shown Un-
 less Otherwise Indicated



Back 213
 Center Vent

Model No. 213
 Dressy Three-Button Double-Breasted
 Single Style
 (Two Buttons Only to Bottom)
 Notched Lapels
 Welt Breast Pocket
 Back as Shown



Back 212
 Center Vent

Model No. 212
 Two-Button Double-
 Breasted Model
 Lower Notched
 Lapel Pockets
 Welt Breast Pocket
 Back as Shown
 Unless Otherwise
 Indicated



Model No. 254
Tuxedo
Peaked Lapels
Regular Pockets
Silk-Faced to Edges



No. 262
Single-Breasted
Full Dress Vest
with Collar



No. 261
BACKLESS
TUXEDO or Full
Dress Vest with Collar



Back of
All Tuxedos
No Vest



No. 264
Single-Breasted
Tuxedo Vest
with Collar



No. 265
Double-Breasted
Dress Vest
with Collar



Model No. 255
Tuxedo
Notch Lapel
Regular Pockets
Silk-Faced to Edges



Made with
Pleats
Turned In
unless
otherwise
indicated.



Model No. 256
Double-Breasted
Frock Coat
Peaked Lapels
Silk-Faced to Hemline

↑ **Model No. 251**
Tuxedo
Peaked Lapels
Patch Pockets
Silk-Faced to Edges

↑ **Model No. 252**
Double-Breasted Tuxedo
Patch Pockets
Silk-Faced to Edges

Model No. 253 ↑
Full-Dress for
Formal Evening Wear
Peaked Lapels
Silk-Faced to Edges



Model No. 257
Clerical Tuxedo
White Collar
Grey Side
Linen Collar



Model No. 258
One-Button
Gateway Frock
Semi-Peaked Lapels



Model No. 259
Double-Breasted
Stand Collar Tuxedo
Patch Pockets
Silk-Faced to Edges



No. 266
Clerical Vest
White Collar
Grey Side of
Linen Collar Wear



No. 267
Cannon Vest
White Collar
Grey Side of
Linen Collar Wear



Model No. 260
Stand Collar Tuxedo
Patch Pockets
Silk-Faced to Edges



Model No. 261
Clerical Tuxedo
White Collar
Grey Side of
Linen Collar Wear

LATEST SMART FASHIONS FOR LADIES' TAILORED MODELS



Back L-061
No Yoke

Model No. L-061

Stylish four-button sports with notch lapels, two lower patch pockets with flaps; breast pocket with flap. Note raised sleeve heads.
SKIRT: Six gore style inverted pleat in front.



Back L-062
No Yoke

Model No. L-062

Three-button single-breasted model, featuring peak lapels, raised sleeve heads, two lower flap pockets and an outside chest pocket with flap.
SKIRT: Flare style with three plain pleats in front.



Back L-063
No Yoke

Model No. L-063

Two-button sports ensemble with notch lapels and three plain patch pockets. Single-breasted with raised sleeve heads.
SKIRT: Three short inverted pleats in front. Please specify if slit is wanted at same or each side.



Back L-064
and L-065
No Yoke

Model No. L-064

Link-button, single-breasted, featuring full-fashioned peak lapels, and two lower flap pockets. Note the fashion-type sleeve heads.
SKIRT: Eight-gore style. No kicks, no vents.



Back L-066
No Yoke

Model No. L-066

A fashionable new one-button, single-breasted sack with graceful peak lapels. Two lower piped pockets and breast pocket in welt style.
SKIRT: Kick pleat at each side.



Because it's good business

Because it's good business to sell the best, the 'zippers' on our suits are Talon* slide fasteners.

Millions of trousers were made this better way during the past year alone, so you'll be in

good (and neater) company when your clothing, too, has this modern, more convenient closure.

Because it's good business to look your best, be sure to tell us, "Talon trouser fastener, please."



THE OLD WAY — Five fastenings that sag, bulge and will all-too-frequently cause embarrassment.



THE NEW WAY — The Talon slide fastener is quick and dependable... gives you a smoother, neater closure.

"TALON" — the dependable slide fastener



© 1934 C. F. FALGOUT, TRUSSARDI, INC.

featured with . . . **Detmer Woolens** . . . If Desired

229 FOURTH AVENUE

NEW YORK

NEWEST
STYLES
FOR
MEN



ISSUED
SEMI-ANNUALLY

PUBLISHED FOR
*Tailoring Arts
Publishing Co.*

Detmer Woolens

“Wear and Tailor Best”

VOLUME 31-2-B



Back 202
No Vent

Model No. 202
YOUNG MEN'S THREE-BUTTON NOTCH LAPEL SACK
Keydoted for Popular Acceptance
Back as Shown Unless Otherwise Ordered

IMPORTANT

Softer fabrics should be selected for these drape styles



† **Model No. 206**
Young Men's Two-Button
Drape Sack
Notch Lapels
Lower Piped Pockets
Back as Shown Unless
Otherwise Ordered

† **Model No. 207**
Young Men's Double-
Breasted Drape Sack
Three Buttons + Two
(in Button)
Lower Piped Pockets
Back as Shown Unless
Otherwise Ordered

Model No. 205
YOUNG MEN'S THREE-BUTTON DRAPE SACK
Lower Piped Pockets Notch Lapels
Back as Shown Unless Otherwise Ordered



Back for All Models
on This Page
No Yoke

NOTE: *These Extreme Young Men Models are made with fullness across the chest and at sleeve heads as shown in the illustrations. Carefully observe these style features before ordering.*



Model No. 211

YOUNG MEN'S THREE-BUTTON SACK

Peaked Lapels

Gracefully Cut with Stylish Lines

Back as Shown Unless Otherwise Ordered



Back 211
and 212
No Yoke

Model No. 212

YOUNG MEN'S TWO-BUTTON SACK

Peaked Lapels

One of the Cleverest Styles of the Season

Back as Shown Unless Otherwise Ordered

©



↑ **Model No. 216**

Four-Button Sports Ensemble
Notch Lapels Stitched Edges
Three Patch Pockets
with Pinches

Specify whether trousers to
match coat are wanted
Back as Shown Unless
Otherwise Ordered

Model No. 217 ↑

Two-Button Sports Model
New Style Lapels
Lower Patch Pockets
with Flaps

Stitched Edges
Back as Shown Unless
Otherwise Ordered



Model No. 218

LATEST THREE-BUTTON SPORTS ENSEMBLE

Notch Lapels with Tab Collar
Three Plain Patch Pockets Stitched Edges

Specify whether trousers to match coat are wanted

"Free-Swing" Back as Shown Unless Otherwise Ordered

NOTE: Tab Collar On This Model



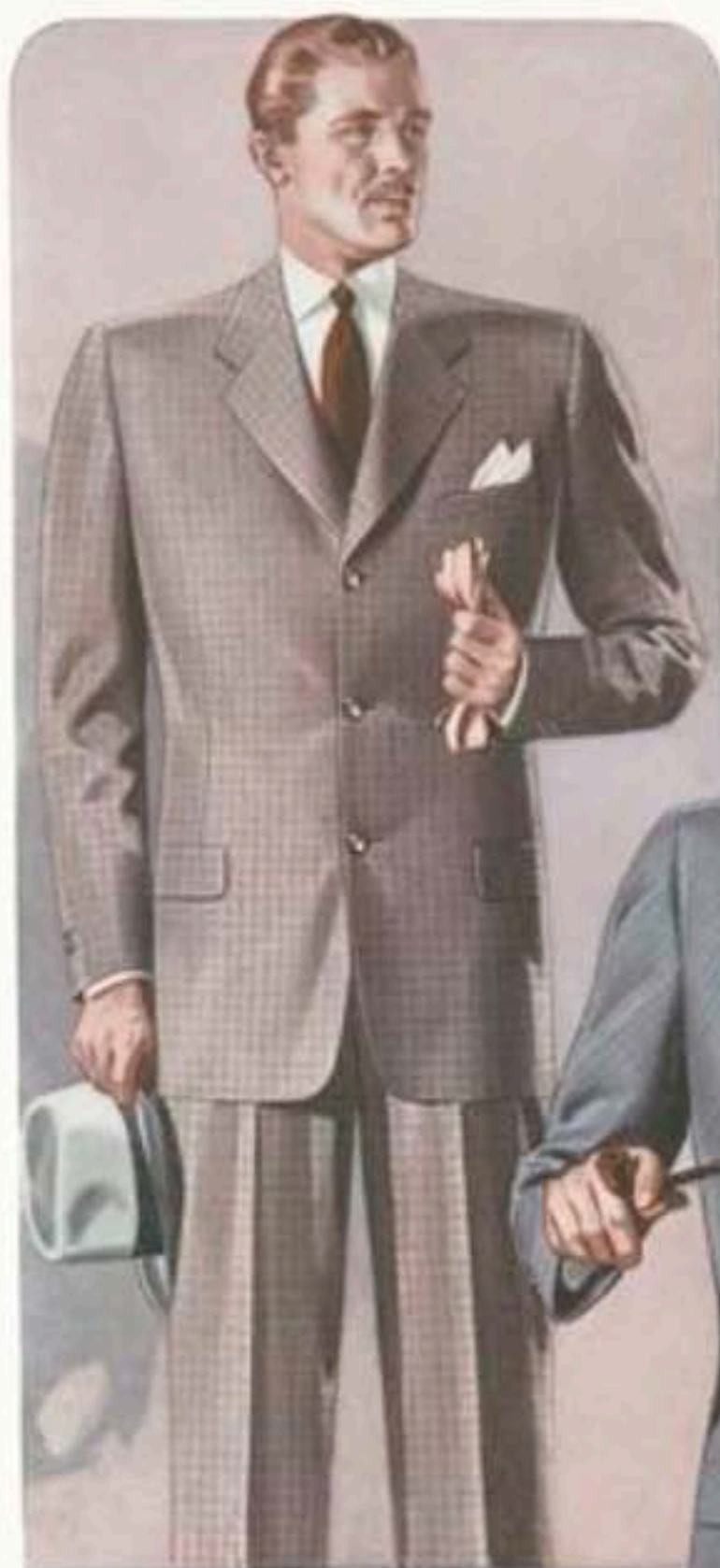
Back 216
Six Vent



Back 217
Six Vent



Back 218
"Free-Swing"
Six Vent



↑ **Model No. 223**
 Three-Button "Natural"
 Model
 Notch Lapels
 Back as Shown Unless
 Otherwise Ordered



Model No. 224 ↑
 Two-Button Double-Breasted
 "Natural" Model
 Back as Shown Unless
 Otherwise Ordered



Back for All Models
 on This Page
 See Text

Model No. 222
 TWO-BUTTON "NATURAL" MODEL
 Notch Lapels Distinctive Semi-Conservative Sack
 Back as Shown Unless Otherwise Ordered



Model No. 231
 Young Men's Smart Two-Button Stout Model
 Notched Lapels—Stylishly Designed
 Back as Shown



Back 231
 No Vest

Model No. 232
 Young Men's Double-Breasted Stout Model
 Two Buttons to Buttons
 Regular Pockets
 Back as Shown



Back 232
 No Vest



A Group of Stout Models



Model No. 229

LATEST THREE-BUTTON CONSERVATIVE STOUT MODEL

Notch Lapels—Fashionable and Dignified
 Back as Shown Unless Otherwise Ordered



Back 229
 No Vest



Model No. 230

SMART TWO-BUTTON CONSERVATIVE STOUT MODEL

Notch Lapels
 Stylishly Designed for Real Comfort
 Back as Shown Unless Otherwise Ordered



Model No. 239
 Three-Button "First
 Sleeve" Topcoat
 Slash Pockets
 Split Sleeves with Tabs
 Loose Back as Shown
 Collar Otherwise
 Ordinal
 Note the "First Sleeve"
 Illustration on Left



Back 239
 Chest View

Very loose model

Model No. 240
 Three-Button Double-
 Breasted Box Model
 Split Sleeves with Tabs
 Slash Pockets
 Loose Back as Shown
 Collar Otherwise
 Ordinal



Back 240
 Chest View



Very loose model



Back 237
 Chest View

Model No. 237
 Three-Button Single-
 Breasted Box Model
 Lower Patch Pockets
 with Flaps
 Attached Elbows and Pockets
 Loose Back as Shown Collar
 Otherwise Ordinal
Very loose model



Back 240
 Chest View

Model No. 240
 Three-Button Double-
 Breasted Model
 Regular Flap Pockets
 An Increasingly
 Popular Style
 Back as Shown Collar
 Otherwise Ordinal



Model No. 218

Popular Notch-Lapels
 Slant Pockets
 Split Sleeves with Tails
 Lower Back as Shown



Back 218
 Center View

Very loose model



Model No. 219

Chesterfield Style
 Notched Lapels
 Lower Back as Shown



Back 219
 Center View

Very loose model

Model No. 220

The Front Model
 with "Swing" Collar
 Slant Pockets
 Split Sleeves with Tails
 Lower Back as Shown



Back 220
 Center View



Very loose model



Model No. 216

Swagger Three-Button
 Single-Breasted Raglan
 Split Sleeves with Cuffs
 Lower Patch Pockets
 with Flaps
 Notched Edges and
 Pockets
 Lower Back as Shown
 Collar Off-Set
 Gilted



Back 216
 Center View

Very loose model



Back 217
 Center View

Very loose model

Model No. 217

Authentic Notch-Lapels
 Notched Lapels
 Slant Pockets
 Split Sleeves with Tails
 Lower Back as Shown
 Collar Off-Set
 Gilted

Very loose model



268—Sport Back
"Free Swing" Back with pleat
to belt on sides. No Vest



269—Sport Back
Fold from Shoulder
to waist. No Vest



270—Sport Back
Pleat Back with belt
hole. No Vest

NEWEST
SPORT
BACKS



271—Sport Back
With Fullness and Pockets
above belt. No Vest



272—Sport Back
Inverted Pleat
Pockets above Belt



273—Sport Back
Yoke and Gathering from
Yoke to Belt



282
Seven
Button
Vest
Athletic
Shoulders
Button
bottom does
not button



283
Six-Button Vest
Athletic Shoulders



274
Drape Back



277
Conservative Back



286
Regular No Collar Vest
Athletic Shoulders



287
Newest
Style
Double-
Breasted
Vest
with
Collar

These styles are for Backs,
Vests and Trousers only. Do
not omit front style wanted.

Any vest can be made with
Athletic Shoulders, if
wanted, specify in order.



280
Double Breasted Vest For
Trousers with high waistband



284
Six-Button Vest
Short Points



275
Form-Fitting Back



278
Box Back—with Seam



288
Neck Collar Vest



281
Popularly styled Six-Button Vest
Button bottom not to button



285
Tailored Vest



276
Medium-Fitting Back



279
Box Back—without Seam



289
Regular No Collar Vest
Piped Pockets



290
Wide Waistband
Trousers
Three-Inch
Waistband



291
High Rise
English Trousers
with Two Pleats
Each Side Turned In



292
Extended Waistband
Pleated Trousers
with One Pleat
Each Side Turned In



293
Double Pleat Extending
to top of Trousers
Deep Belt Loops
Pleats Turned Out



294
Pleated Trousers
Two Pleats Each Side
Turned Out



295
Regular Cut
Trousers



296
Full Cut Trousers
Wide Knees and Bottoms



297
New Peg Top
Trousers

NEWEST
LADIES

TAILORED
MODELS



Back L-071
Center Vent

Model No.
L-071

Smartly styled top-coat with notch lapels — three buttons and patch pockets with flaps.
Note: Split Sleeves with cuffs.



Model No.
L-072

The latest form-fitting single-breasted fashion, featuring three buttons, notch lapels and lower flap pockets. Note the "Full" sleeves.



Back L-073
Center Vent

Model No.
L-073

The latest double-breasted fashion—a three-button (two to button) style with extremely smart lines, and slanting patch pockets.



Back L-074
and L-075
Center Vent

Model No.
L-074

This new three-button, single-breasted Raglan style has notch lapels, and lower slash pockets. Split sleeves with cuffs.



Model No.
L-075

The favorite Bal-Raglan style, with lower slash pockets, and split sleeves with cuffs. Unusually well designed.



Back L-076
No Vent

Model No.
L-076

Short fly-front top-coat with peak lapels—outside cash pocket and two lower pockets with flaps. Stitching on cuffs, flaps, and bottom.
Note: Split Sleeves

Because it's good business

Because it's good business to sell the best, the 'zippers' on our suits are Talon* slide fasteners.

Millions of trousers were made this better way during the past year alone, so you'll be in

good (and neater) company when your clothing, too, has this modern, more convenient closure.

Because it's good business to look your best, be sure to tell us, "Talon trouser fastener, please."



THE OLD WAY — Five fastenings that pop, bulge and will all-too-frequently cause embarrassment.



THE NEW WAY — The Talon slide fastener is quick and dependable... gives you a smoother, neater closure.

*"TALON" —
the dependable slide fastener*



*Reg. U.S. Pat. Off., Talon, Inc.

featured with . . . Detmer Woolens . . . If Desired

229 FOURTH AVENUE NEW YORK

