

ROSE & COMPANY

TAILORS TO THE TRADE

MAKERS
OF
PERFECT



CLOTHES
TO
ORDER

340-12-44 FIFTH AVE.

CHICAGO

ESTABLISHED 1889

FALL & WINTER
1910-11

IMPORTANT—Instructions How to Measure



1. Please study these instructions carefully. Follow them up scrupulously and you will avoid mistakes.
2. It is important when measuring that your customer stands in his natural position and that everything of a bulky nature is removed from all joints.
3. Another important feature in measuring is to give a good description of your customer, the best size of his shape. Please note the figures marked from 1 to 11 on the back of our order blank and designate by (A) the form and shoulders that nearest resemble your customer.
4. It is absolutely necessary that you give the height and weight of the customer.
5. Always use Rose & Company's tape-measures, which is absolutely correct.
6. If the instructions How to Measure given heretofore are not quite clear to you, please write us and we will be glad to furnish you with all the necessary information, so we want to hear from all possibilities of mistakes. Respectfully yours,

ROSE & COMPANY,

Makers of Perfect Clothes to Order

340-342 Fifth Ave., CHICAGO, U. S. A.

RULES FOR MEASURING

FIRST MEASURE. **NECK AND WAIST.**—Measure from collar seam—not top of collar—from 1 to 2 for the full length desired. Waist measure from 1 to 2 may be omitted for sack coats.

Length of frock coat. Measure from collar seam—not top of collar—from 1 to 2, to a point about 11 in. below the natural waist—the natural waist is on a line with the top of the hip bones—then continue to full length desired.

SECOND MEASURE. **WRIST OR CUFF.** Measure from the middle of back to elbow seam.

THIRD MEASURE. **SHOULDER OR ARM.** From 4 to 6 and 7. The right arm should be held on a level with the shoulder and the elbow crooked at right angles, the hand being about 12 inches from the breast. 20" is size to measure BUST OF SLEEVE TO WRIST CUFF. These measure from the coat seam at center of back to the elbow and continue to the wrist joint without removing the tape. Do not give yourself by the length of the sleeve of the coat customer may have on, but measure to wrist joint.

18" As an additional precaution for sleeve length, take breast measure as shown on cut from A to B.

FOURTH MEASURE. **ARMHOLE MEASURE OVER VEST.** Let the customer remove his coat, breathe natural and not expand his chest. Draw the tape over the breast, over the shoulder blades, under the arm pits and over the highest part of his chest. **DO NOT TAKE THIS MEASURE TOO TIGHT.**

FIFTH MEASURE. **WAIST.** Observe the same rule for waist measure, and draw the tape straight across, all around creased part of waist. If customer has a very protruded stomach, give additional measure around the largest part, and if he desires the coat loose fitting, mention the fact, but make no allowance in measurements, as we will make an allowance.

SIXTH MEASURE. **SEAT MEASURE OF COAT.** Measure all around largest part of the seat. This measure should not be omitted when ordering single coats.

SEVENTH MEASURE. **VERY MEASURE, SINGLE BREASTED.** Draw tape over seam of back of neck to desired height to top button from 1 to 8. Use full length start at the same point, and measure directly to bottom of vest, avoiding the top button. For the opening of the double-breasted vest take the same kind of measure. Measure first to opening desired, then where the first button of a double-breasted vest should be.

PANTALOON MEASURE. The pantaloons should be drawn well up in crotch, and customer stand erect.

OUTSIDE SEAM. Measure from top of waist band to where the heel meets shoe.

INSIDE SEAM. Place the end of the tape well up in the crotch and measure to where the heel meets shoe.

SEAT AND THIGH. This measure should always be taken close. In taking the former let the customer stand erect with his heels close together. The thigh measure may be omitted entirely unless customer has very prominent thighs. For extra large men who have prominent stomach give additional measure around the largest part.

OVERCOAT MEASURES. All measures to be taken, same as for a regular coat, excepting that customer keep coat on and take all measures over with, including the breast and waist, while that have customer remove coat and give his breast and waist measure over the vest. Also be sure to give length desired.

NOTICE We have absolutely no connection with any other concern in the tailoring business similar in name to ours, and would ask that you address us plainly, "340-342 Fifth Ave., Chicago," and your mail will reach us promptly. Always keep a supply of our self-addressed envelopes on hand.

We are one of the oldest concerns in this line of business, having been established since 1880.

There are "NONE BETTER, FEW SO GOOD."

This Sample Book is the Property of ROSE & COMPANY, and we will appreciate very much if you will give same the best of care while in your possession.

IMPORTANT -- Instructions How to Measure



1. Please study these instructions carefully, follow them up accurately and you will avoid mistakes.
2. It is important when measuring, that your customer stands in his natural position and that everything of a bulky nature is removed from all pockets.
3. Another important feature in measuring is to give a good description of your customer, the best idea of his shape. Please note the figures marked from 1 to 6 on the back of our order blank and designate by (X) the form and shoulders that nearest resembles your customer.
4. It is absolutely necessary that you give the height and weight of the customer.
5. Always use Rose & Company's tape measure, which is absolutely correct.
6. If the instructions How to Measure given below are not quite clear to you, please write us and we will be glad to furnish you with all the necessary information, as we want to eliminate all possibilities of mistakes. Respectfully yours,

ROSE & COMPANY,

Makers of Perfect Clothes to Order

340-342 Fifth Ave., CHICAGO, U. S. A.

RULES FOR MEASURING

FIRST MEASURE with coat on. **BACK COAT.** Measure from collar seam—not top of collar—from 1 to 2 for the full length desired. Waist measure from 1 to 2 can be omitted for sack coats.

Length of frock coat. Measure from collar seam—not top of collar—from 1 to 2, to a point about 10 in. below the natural waist—the natural waist is on a line with the top of the hip bones—then continue to full length desired.

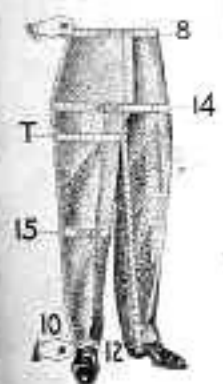
SECOND MEASURE. **WIDTH OF BACK.** Measure from the middle of back to sleeve seam.

THIRD MEASURE. **LENGTH OF SLEEVE.** from 4 to 6 and 7. The right arm should be held on a level with the shoulder and the elbow crooked at right angles, the hand being about 12 inches from the breast. BE SURE TO MEASURE LENGTH OF SLEEVE TO WRIST JOINT. Then measure from the coat seam at center of back to the elbow and continue to the wrist joint without removing the tape. Do not guide yourself by the length of the sleeve of the coat customer may have on, but measure to wrist joint.

(S) As an additional precaution for sleeve length, take incision measure as shown on cut from A to B.

FOURTH MEASURE. **BREAST MEASURE** over vest. Let the customer remove his coat, breathe natural and not expand his chest. Draw the tape over the breast, over the shoulder blades, under the arm pits and over the highest part of his chest. **DO NOT TAKE THE MEASURE TOO TIGHT.**

FIFTH MEASURE. **WAIST.** Observe the same rule for waist measure, and draw the tape straight across, all around smallest part of waist. If customer has a very prominent stomach, give additional measure around the largest part, and if he desires the coat loose fitting, mention the fact, but make no allowance on measurements, as we will make the necessary



ALWAYS MEASURE ON RIGHT LEG

and the elbow crooked at right angles, the hand being about 12 inches from the breast. **Be sure to measure length of sleeve to wrist joint.** Then measure from the coat seam at center of back to the elbow and continue to the wrist joint without removing the tape. Do not guide yourself by the length of the sleeve of the coat customer may have on, but measure to wrist joint.

As an additional precaution for sleeve length, take incasm measure as shown on cut from A to B.

FOURTH MEASURE. BREAST MEASURE OVER VEST. Let the customer remove his suit, breathe natural and not expand his chest. Draw the tape over the breast, over the shoulder blades, under the arm pits and over the highest part of his chest. DO NOT TAKE THE MEASURE TOO TIGHT.

FIFTH MEASURE. WAIST. Observe the same rule for waist measure, and draw the tape straight across, all around smallest part of waist. If customer has a very prominent stomach, give additional measure around the largest part, and if he desires the coat loose fitting, mention the fact, but make no allowances on measurements, as we will make the necessary allowances.

SIXTH MEASURE. SEAT MEASURE OF COAT. Measure all around largest part of the seat. This measure should not be omitted when ordering single coats.

SEVENTH MEASURE. VEST MEASURE, single breasted. Draw tape over seam at back of neck to desired height to top button from 1 to 9. For full length start at the same point, and measure directly to bottom of vest, avoiding the top button. For the opening of the double-breasted vest take the same kind of measure. Measure first to opening desired, then where the first button of a double-breasted vest should be.

PANTALOON MEASURE. The pantaloons should be drawn well up in crotch; and customer stand erect.

OUTSIDE SEAM. Measure from top of waist band to where the heel meets shoe.

INSIDE SEAM. Place the end of the tape well up in the crotch and measure to where the heel meets shoe.

SEAT AND THIGH. This measure should always be taken close. In taking the former let the customer stand erect with his heels close together. The thigh measure may be omitted entirely unless customer has very prominent thighs. For extra large men who have prominent stomach give additional measure around the largest part.

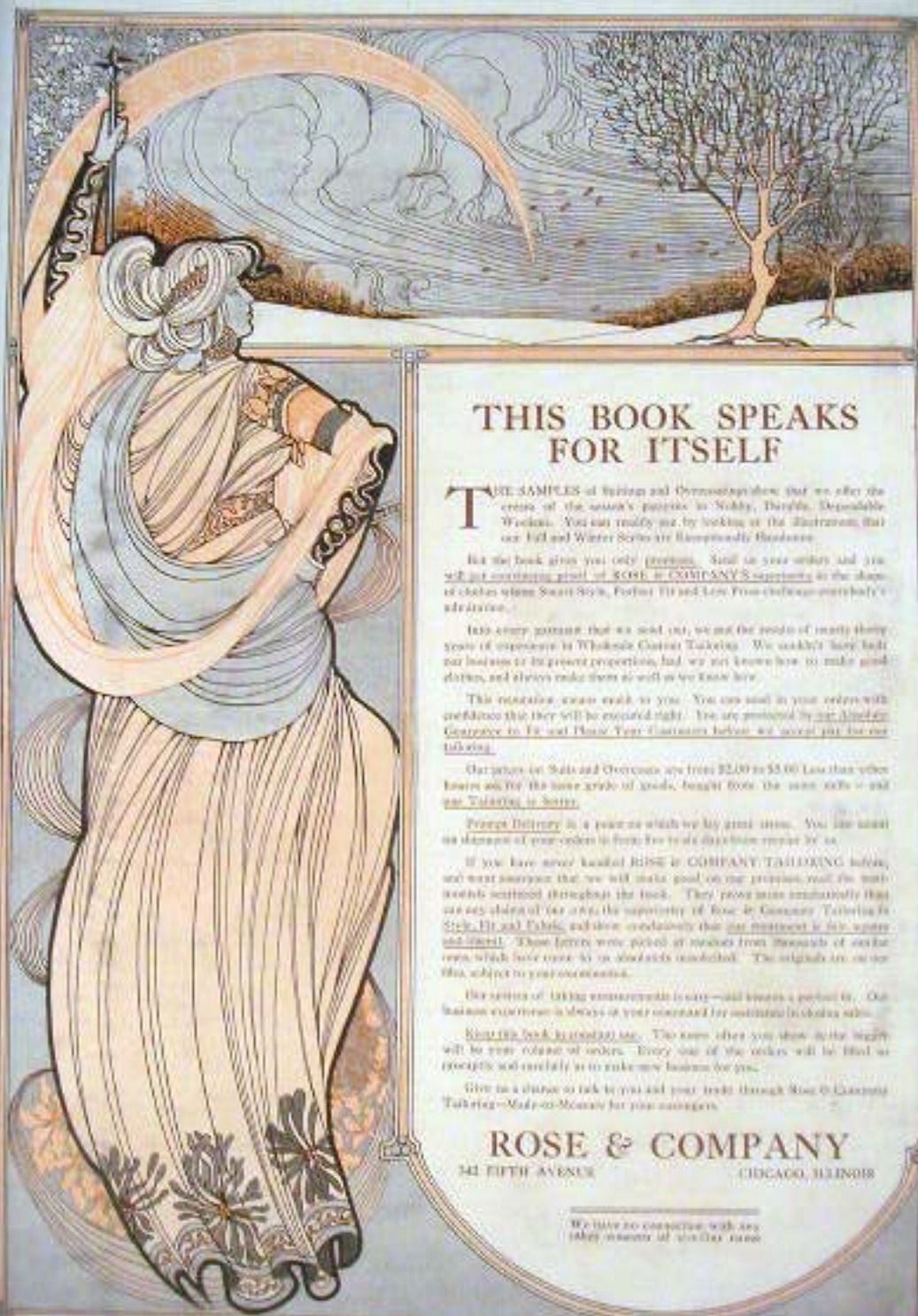
OVERCOAT MEASURES. All measures to be taken same as for a regular coat, excepting that customer keep coat on and take all measures over same, including the breast and waist; after that have customer remove coat and give his breast and waist measure over the vest. Also be sure to give length desired.

NOTICE We have absolutely no connection with any other concern in the tailoring business similar in name to ours, and would ask that you address us plainly, "340-342 Fifth Ave., Chicago," and your mail will reach us promptly. Always keep a supply of our self-addressed envelopes on hand.

We are one of the oldest concerns in this line of business, having been established since 1880.

There are "NONE BETTER. FEW SO GOOD."

This Sample Book is the Property of ROSE & COMPANY, and we will appreciate very much if you will give same the best of care while in your possession



THIS BOOK SPEAKS FOR ITSELF

THE SAMPLES of fabrics and trimmings show that we offer the cream of the season's patterns in Novelty, Durable, Dependable Weaves. You can readily see by looking at the illustrations that our Fall and Winter Styles are Uncompromisingly Beautiful.

But the book gives you only previews. Send us your orders and you will get something good of ROSE & COMPANY'S superiority in the shape of clothes when Smart Style, Perfect Fit and Low Price combine everybody's advantage.

Into every garment that we send you, we put the results of nearly thirty years of experience in Wholesale Custom Tailoring. We wouldn't have built our business at its present proportions had we not known how to make good clothes, and always make them so well as we know how.

This guarantee means much to you. You can send in your orders with confidence that they will be executed right. You are protected by our Standard Guarantee to Fit and Please Your Customers before we accept you for our tailoring.

Our prices on Suits and Overcoats are from \$2.00 to \$5.00. Lower than other houses and for the same grade of goods, bought from the same mills — and our Tailoring is Better.

Free Delivery is a feature which we lay great stress on. You can count on shipment of your orders in from five to six days after receipt by us.

If you have never heard of ROSE & COMPANY TAILORING before, we want assurance that we will make good on our promise, and the most convincing assurance throughout the book. They prove more convincingly than any set of clothes of our own, the superiority of ROSE & COMPANY TAILORING in Style, Fit and Fabric, and show conclusively that our treatment is for women and men. These letters were picked at random from thousands of our best ones, which have come to us and which are included. The originals are on our file, subject to your examination.

Our service of making measurements is easy — and makes a perfect fit. Our business experience is always at your command for assistance in clothing sales.

Send this book to (address) now. The more often you show it to the merchant will be your volume of orders. Every one of our orders will be filled as promptly and carefully as to make new business for you.

Give us a chance to talk to you and your friends through ROSE & COMPANY TAILORING—Made-to-Measure for your advantage.

ROSE & COMPANY

341 FIFTH AVENUE

CHICAGO, ILLINOIS

We have no connection with any other concern of the same name.

THIS BOOK SPEAKS FOR ITSELF

THE SAMPLES of Suitings and Overcoatings show that we offer the cream of the season's patterns in Nobby, Durable, Dependable Woolens. You can readily see by looking at the illustrations, that our Fall and Winter Styles are Exceptionally Handsome.

But the book gives you only promises. Send us your orders and you will get convincing proof of ROSE & COMPANY'S superiority in the shape of clothes whose Smart Style, Perfect Fit and Low Price challenge everybody's admiration.

Into every garment that we send out, we put the results of nearly thirty years of experience in Wholesale Custom Tailoring. We couldn't have built our business to its present proportions, had we not known how to make good clothes, and always make them as well as we know how.

This reputation means much to you. You can send in your orders with confidence that they will be executed right. You are protected by our Absolute Guarantee to Fit and Please Your Customers before we accept pay for our tailoring.

Our prices on Suits and Overcoats are from \$2.00 to \$5.00 Less than other houses ask for the same grade of goods, bought from the same mills — and our Tailoring is better.

Prompt Delivery is a point on which we lay great stress. You can count on shipment of your orders in from five to six days from receipt by us.

If you have never handled ROSE & COMPANY TAILORING before, and want assurance that we will make good on our promises, read the testimonials scattered throughout the book. They prove more emphatically than can any claims of our own, the superiority of Rose & Company Tailoring in Style, Fit and Fabric, and show conclusively that our treatment is fair, square and liberal. These letters were picked at random from thousands of similar ones, which have come to us absolutely unsolicited. The originals are on our files, subject to your examination.

Our system of taking measurements is easy — and insures a perfect fit. Our business experience is always at your command for assistance in closing sales.

Keep this book in constant use. The more often you show it, the bigger will be your volume of orders. Every one of the orders will be filled so promptly and carefully as to make new business for you.

Give us a chance to talk to you and your trade through Rose & Company Tailoring — Made-to-Measure for your customers.

ROSE & COMPANY

342 FIFTH AVENUE

CHICAGO, ILLINOIS

We have no connection with any other concern of similar name



1910 FALL & WINTER 1911



1500



Make of Suit: _____
 Color and Trim: _____
 Buttons: _____
 Linings: _____

1501



Make of Suit: _____
 Color and Trim: _____
 Buttons: _____
 Linings: _____

1502



Make of Suit: _____
 Color and Trim: _____
 Buttons: _____
 Linings: _____



Make of Suit: _____
 Color and Trim: _____
 Buttons: _____
 Linings: _____

FOR SAMPLE OF MILLER 1910 1502 1501 1500

1504



Make of Suit: _____
 Color and Trim: _____
 Buttons: _____
 Linings: _____



Make of Suit: _____
 Color and Trim: _____
 Buttons: _____
 Linings: _____

1505

1506



Make of Suit: _____
 Color and Trim: _____
 Buttons: _____
 Linings: _____



"THE MODEL" - Four Button Novelty Suit
 The Best for the Extra Occasion of the City of New York
 All New Coat Made in WEINSTEIN "1910" Dress Making Class



1910 FALL & WINTER 1911

1500



Price of Suit	-	-	-	\$	_____
" Coat and Vest,	-	-	-	\$	_____
" Pants,	-	-	-	\$	_____
" Overcoat,	-	-	-	\$	_____

1501



Price of Suit	-	-	-	\$	_____
" Coat and Vest,	-	-	-	\$	_____
" Pants,	-	-	-	\$	_____
" Overcoat,	-	-	-	\$	_____

1502



Price of Suit	-	-	-	\$	_____
" Coat and Vest,	-	-	-	\$	_____
" Pants,	-	-	-	\$	_____



Price of Suit	-	-	-	\$	_____
" Coat and Vest,	-	-	-	\$	_____
" Pants,	-	-	-	\$	_____
" Overcoat,	-	-	-	\$	_____

THIS SAMPLE IS BLUE

1503

IF BLACK IS WANTED MARK IT ON YOUR ORDER



"THE MODEL" — Four Button Novelty Sack

See Price List for EXTRA CHARGES for This Style of Coat

All Sack Coats Made up WITHOUT "VENTS," Unless Otherwise Ordered

ROSE & CO



Oakdale, La., April 5, 1910

ROSE & COMPANY
Chicago

Gentlemen:

Enclosed please find \$4.00, which pays for invoice
March 2d. The goods received thus far are perfectly satisfactory,
and much cheaper than other houses.

Yours very truly,

L. H. MILLER

Goods Satisfactory and Much Cheaper than Other Houses



"THE LIVINGSTON" - Two Button Novelty Sack

This Coat will be Made up With CUFFS ON SLEEVES, Unless Otherwise Ordered
See Price List for Extra Charges for Cuffs
All Sack Coats Made up WITHOUT "VENTS," Unless Otherwise Ordered

Our Unbreakable Coat Fronts



We give just as careful attention to INNER CONSTRUCTION of our garments as we do to outer appearance, and GUARANTEE that the front of our coats WILL NOT BREAK.



THE "CHICAGO"

Three Button Sack, Round Collars

THE "EDGAR"

Four Button Novelty Sack, Box Pleat on Sides, Extra Flare
See Price List for Extra Charge for This Style of Coat

All Sack Coats made up WITHOUT "VENTS," Unless Otherwise Ordered



No. 21 Three Button Sack, Slanting Pockets

No. 26 Two Button Sack, Long Lapels

ALL SACK COATS MADE UP WITHOUT "VENTS," UNLESS OTHERWISE ORDERED



STYLE "H"

Straight Front Sack, Three Buttons

STYLE "L"

Three Button Double Breasted Sack

All Sack Coats made up WITHOUT "VENTS," Unless Otherwise Ordered



No. 60 Four Button Nevelly Sack

No. 62 Two Button Double Breasted Sack

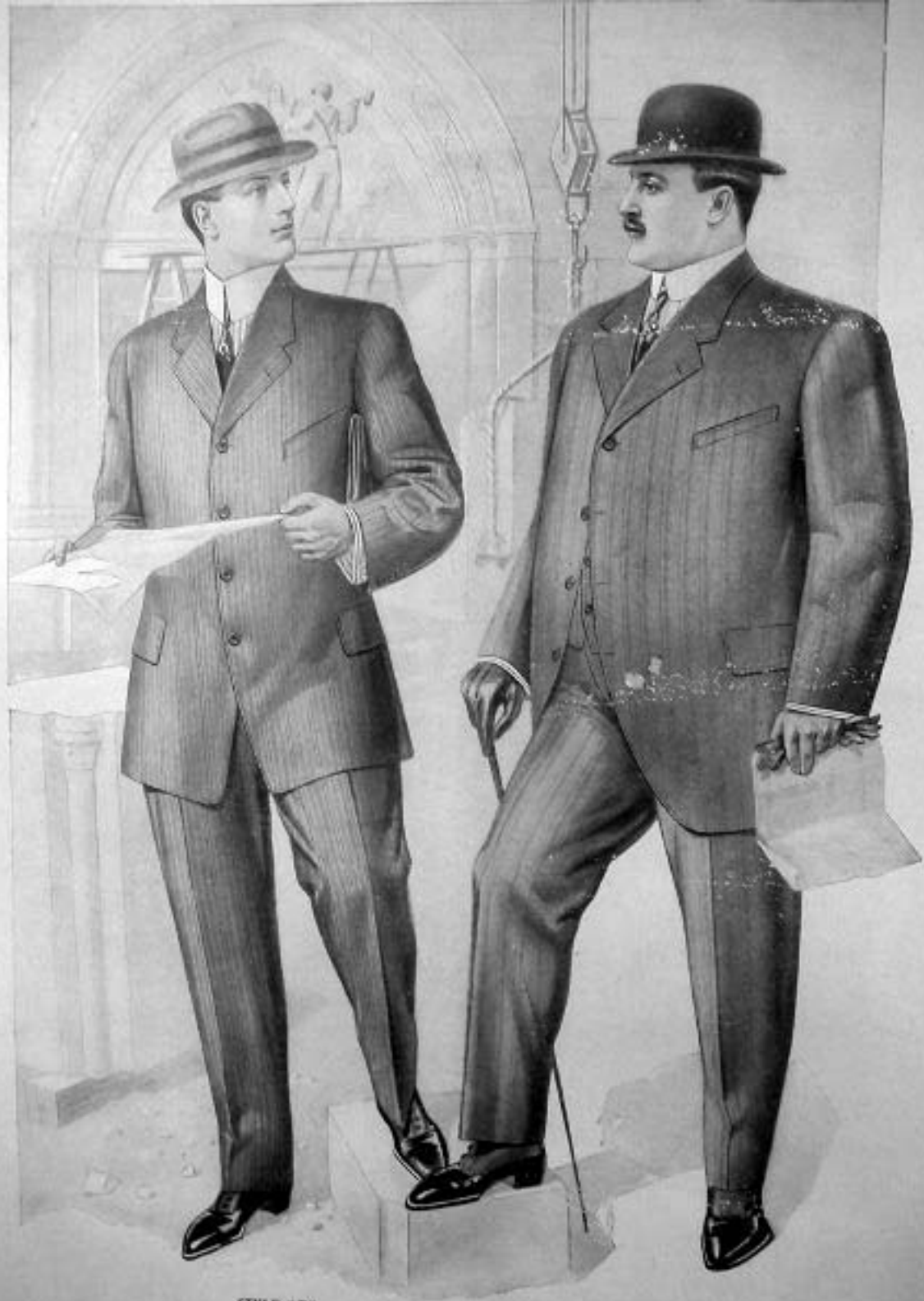
All Sack Coats made up WITHOUT "VENTS," Unless Otherwise Ordered



STYLE "E"
Three Button Sack

"E-X"
Three Button Sack, for Corpulent Men

ALL Back Coats made up WITHOUT "VENTS," Unless Otherwise Ordered



STYLE "T"
Four Button Sack

STYLE "J"
One Button Sack, for Corpulent Men

All Sack Coats made up WITHOUT "VENTS," Unless Otherwise Ordered



Form Fitting Back

Full Back

Medium Back

Back View of Sack Coats

All Sack Coats made up WITHOUT "VENIS," Unless Otherwise Ordered

Style F

Style G



Style O

Style F

Style K

Style M

INDEX

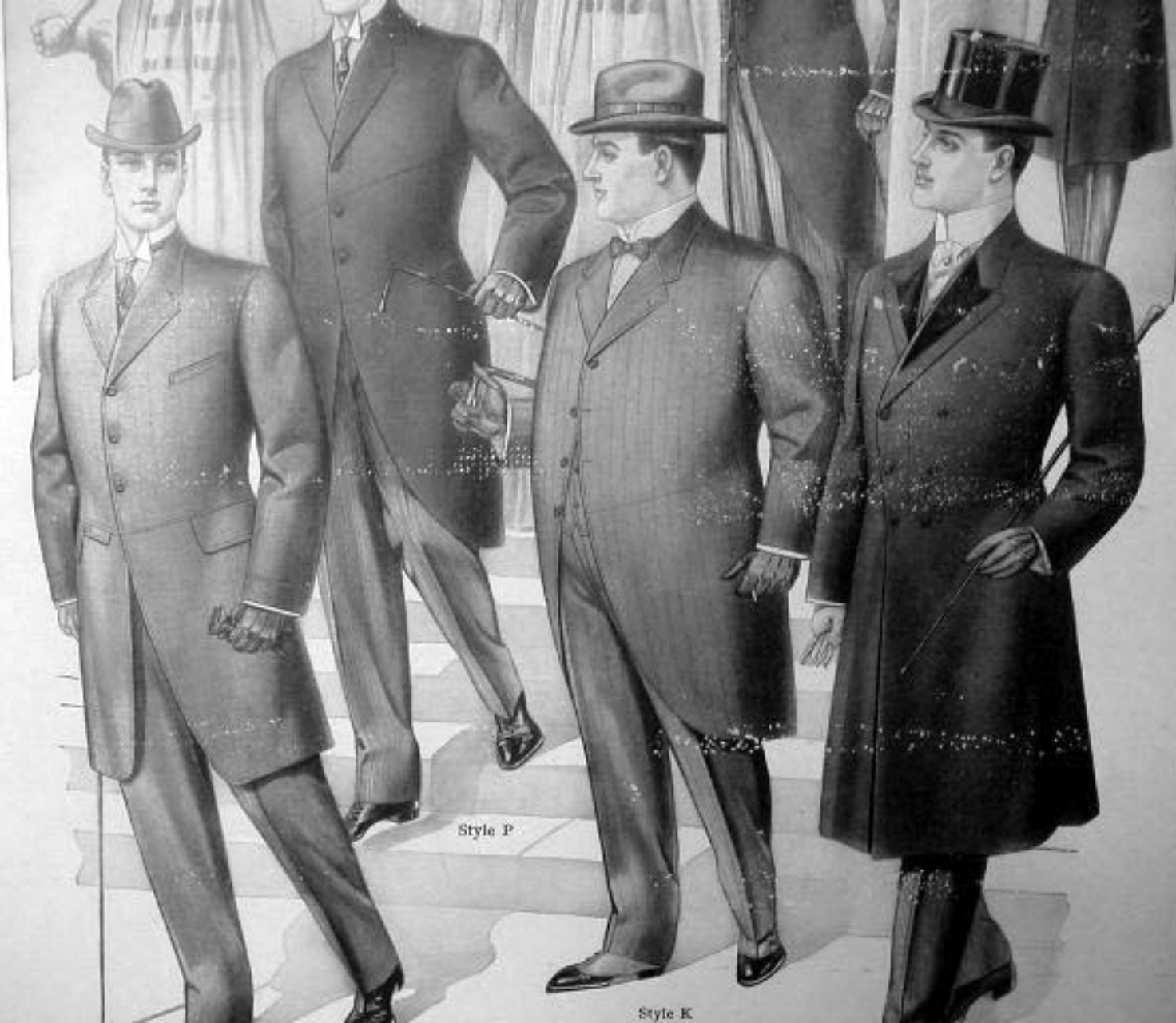
Style "F" Long Roll Frock, Not to be Buttoned
 Style "G" Single Breasted Prince Albert
 Style "K" Over Button Frock, for Corpulent Men

Style "O" English Walking Coat
 Style "P" Three Button Frock
 Style "M" Double Breasted Prince Albert

Style F

Style G





Style P

Style K



No. "35"

STYLE "B"

STYLE "A"

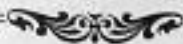
INDEX

Style "A" Full Dress
 Style "B" Tuxedo, Shawl Collar

Style "C" Clerical, Standing Collar
 No. "35" Tuxedo, Padded Lapels



THE ROSE PANTS



Regular

Full Peg
Top

Half Peg
Top

TABLE OF PROPORTIONATE MEASURES FOR TROUSERS

SEAT.....	34	35	36	37	38	39	40	41	42	43	44	46
KNEE.....	17½	18	18½	19	19	19½	20	20	20	21	21½	21½
BOTTOM.....	16	16	16½	17	17	17	17½	17½	18	18½	18½	19

The above proportions are for regular trousers. If half peg or full peg top trousers are desired, mention same and we will make the allowance.



Full Peg
Top

Regular



No. "47"
Class "B," see Price List

THE "PADDOCK"
See Price List for Extra Charge for this Style



THE "AUTO"
Class "B," see Price List

THE "SENATOR"
Class "A," see Price List



THE "STANLEY"
Class "B," see Price List

STYLE "B"
Fly Front Overcoat



THE "KENT"



STYLE "N"



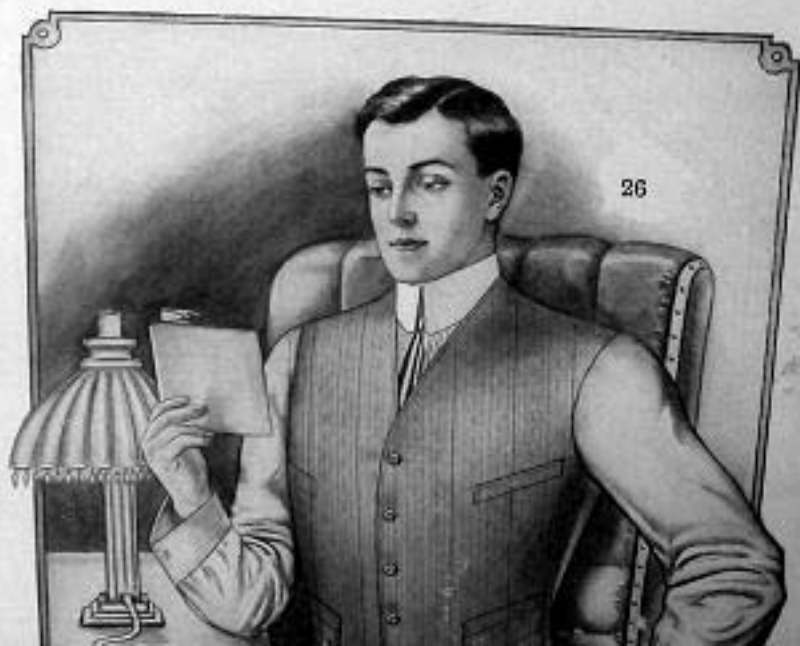
STYLE "O"



Index to Vest Plate

- No. 1. Curved Standing Collar.
 No. 2. Full Dress, Single Breasted, no Collar.
 No. 3. Notched Collar, Single Breasted.
 No. 4. Full Dress, Single Breasted, Broad Collar.
 No. 5. Double Breasted, Notched Collar.
 No. 6. Single Breasted, Notched Collar.
 No. 7. Full Dress, Double Breasted.
 No. 8. Double Breasted, Three Buttons, no Collar, Common Cutaway.
 No. 9. Double Breasted, Notched Collar, Two Buttons.
 No. 10. Single Breasted, Four Buttons, Fancy Flaps on Pockets.
 No. 11. Single Breasted, no Collar, Single Breasted, Fancy Flaps on Lower Pockets.
 No. 12. Single Breasted, no Collar, Three Buttons, Fancy Flaps on Lower Pockets.
 No. 13. Single Breasted, Lower Patch Pockets.

See Extra Charge on Styles No. 27 and 28.



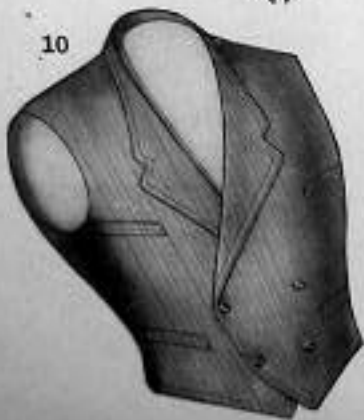
11



7



10



26



2



8



26



27



6



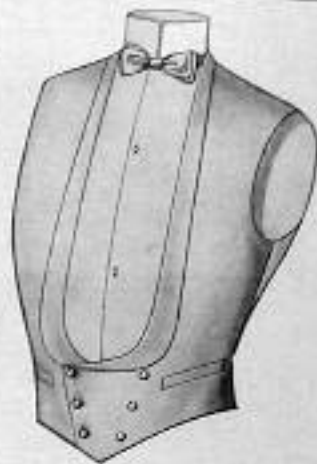
2



8

28





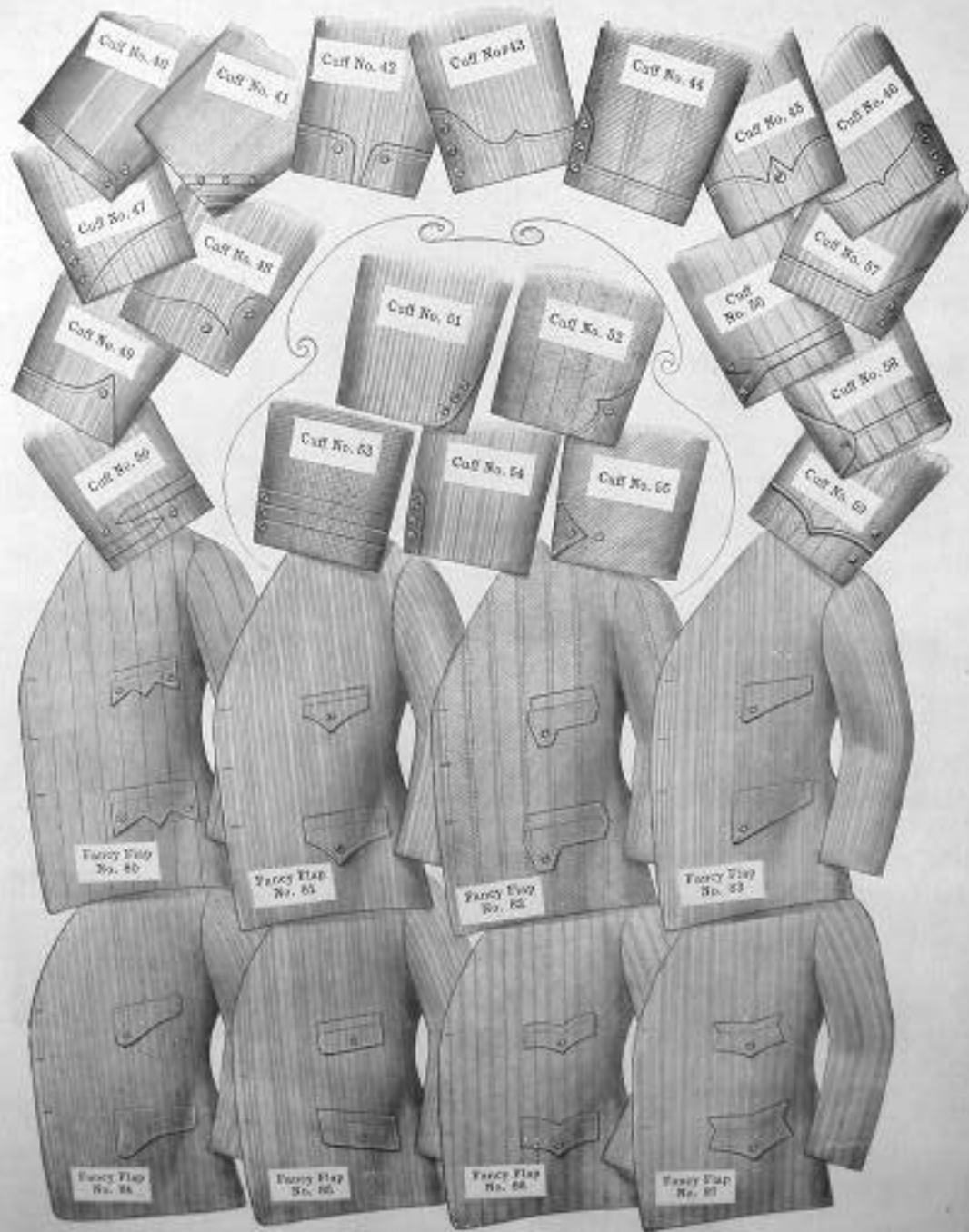
Index to Vest Plate

- No. 1 Clerical Standing Collar.
- No. 2 Full Dress, Single Breasted, no Collar.
- No. 3 Notched Collar, Single Breasted.
- No. 4 Full Dress, Single Breasted, Round Collar.
- No. 6 Double Breasted, Notched Collar.
- No. 7 Single Breasted, Round Collar.
- No. 8 Full Dress, Double Breasted.

- No. 9 Double Breasted, Three Buttons, no Collar, Corners Cutaway.
- No. 10 Double Breasted, Notched Collar, Two Buttons.
- No. 11 Single Breasted, Four Buttons, Fancy Flaps on Pockets.
- No. 26 No Collar, Single Breasted, Fancy Flaps on Lower Pockets.
- No. 27 Single Breasted, no Collar, Three Buttons, Fancy Flaps on Lower Pockets.
- No. 28 Novelty Vest, Lower Patch Pockets.

See Extra Charge on Styles No. 27 and 28.

Fancy Flaps and Cuffs



Order CUFFS AND FANCY FLAPS by Number

See Price List for Extra Charges on Cuffs and Fancy Flaps

For STYLE OF COAT Refer to the Fashion Plate

Fancy Flaps and Cuffs



Cuff No. 40

Cuff No. 41

Cuff No. 42

Cuff No. 43

Cuff No. 44

Cuff No. 45

Cuff No. 46

Cuff No. 47

Cuff No. 48

Cuff No. 49

Cuff No. 49

Cuff No. 51

Cuff No. 52

Cuff No. 56

Cuff No. 58

Cuff No. 50

Cuff No. 53

Cuff No. 54

Cuff No. 55

Cuff No. 59



Fancy Flap
No. 80

Fancy Flap
No. 81

Fancy Flap
No. 82

Fancy Flap
No. 83

Fancy Flap
No. 84

Fancy Flap
No. 85

Fancy Flap
No. 86

Fancy Flap
No. 87

Order CUFFS AND FANCY FLAPS by Number

See Price List for Extra Charges on Cuffs and Fancy Flaps

Description of Samples



140	Wool Worsted	570	Fancy Cashmere	901	Grey Worsted	1370	Fancy Grey Worsted
141	Wool Worsted	571	Fancy Worsted	902	Fancy Cashmere	1371	Black Worsted
142	Fancy Cashmere	572	Fancy Cashmere	903	Fancy Worsted	1372	Fancy Grey Worsted
143	Wool Worsted, also in Black	573	Fancy Grey Worsted	904	Wool Serge, also in Black	1373	Fancy Cashmere
144	Wool Worsted	574	Wool Worsted, also in Black	905	Grey Worsted	1374	Fancy Worsted
145	Wool Worsted	575	Fancy Cashmere	906	Fancy Worsted	1375	Fancy Worsted
146	Fancy Cashmere	576	Fancy Striped Kersey	907	Black Worsted	1376	8/8 Mixed Worsted
147	Fancy Cashmere	577	8/8 Mixed Worsted	908	Fancy Worsted	1377	Fancy Grey Worsted
148	Fancy Cashmere	578	Fancy Striped Worsted	909	Fancy Worsted	1378	Fancy Worsted
149	Fancy Cashmere	579	Fancy Cashmere	910	Fancy Worsted	1379	8/8 Mixed Worsted
150	Fancy Worsted	580	Striped Blue Serge	911	Black Worsted	1380	Fancy Worsted
151	Fancy Cashmere	581	Fancy Cashmere	912	Black Unshaded Worsted	1381	Fancy Cashmere
152	Fancy Cashmere	582	Fancy Striped Kersey	913	Fancy Worsted	1382	Striped Grey Worsted
153	Fancy Cashmere	583	Fancy Worsted	914	Fancy Grey Cashmere	1383	8/8 Mixed Worsted
154	Wool Worsted	584	Fancy Cashmere	915	Wool Serge, also in Black	1384	Wool Serge, also in Black
155	Fancy Cashmere	585	Fancy Worsted	916	Grey Worsted	1385	Fancy Grey Worsted
156	Fancy Worsted	586	Fancy Striped Broad Worsted	917	Striped Blue Serge	1386	Fancy Worsted
157	Fancy Cashmere	587	Fancy Cashmere	918	Fancy Worsted	1387	Fancy Worsted
158	Fancy Cashmere	588	Fancy Cashmere	919	Grey Worsted	1388	Fancy Worsted
159	Fancy Cashmere	589	Wool Serge, also in Black	920	Fancy Grey Worsted, also in Black	1389	Fancy Striped Kersey
160	Black Wool Worsted	590	Fancy Striped Worsted	921	Fancy Cashmere	1390	Black Broad Worsted
161	Fancy (Wool)	591	Fancy Cashmere	922	Fancy Cashmere	1391	Fancy Worsted
162	Fancy Worsted	592	Wool Worsted, also in Black	923	Wool Worsted, also in Black	1392	Fancy Grey Worsted
163	Fancy Worsted	593	Fancy Cashmere	924	Fancy Worsted	1393	Fancy Worsted
164	Fancy Cashmere	594	Fancy Worsted	925	Fancy Striped Worsted	1394	Fancy Unshaded Worsted
165	Fancy Cashmere	595	Fancy Worsted	926	Grey Worsted	1395	Fancy Cashmere
166	Fancy Cashmere	596	Fancy Cashmere	927	Wool Serge, also in Black	1396	Black Striped Worsted
167	Wool Serge, also in Black	597	Grey Striped Worsted	928	Fancy Worsted	1397	8/8 Mixed Worsted
168	Black Worsted	598	Fancy Worsted	929	Wool Serge, also in Black	1398	Wool Serge, also in Black
169	Fancy Cashmere	599	Fancy Cashmere	930	Fancy Grey Worsted	1399	Black Striped Worsted
170	Fancy Cashmere	600	Fancy Cashmere	931	Fancy Grey Worsted	1400	Wool Serge, also in Black
171	Fancy Cashmere	601	Fancy Cashmere	932	Fancy Grey Worsted	1401	Wool Serge, also in Black
172	Fancy Cashmere	602	Wool Serge, also in Black	933	Black Unshaded Worsted	1402	Grey Striped Worsted
173	Wool Serge, also in Black	603	Grey Worsted	934	Fancy Striped Worsted	1403	Wool Serge, also in Black
174	Wool Serge, also in Black	604	Fancy 8/8 Mixed Worsted	935	Fancy Striped Kersey	1404	Wool Serge, also in Black
175	Wool Serge, also in Black	605	Fancy Cashmere	936	Wool Serge, also in Black	1405	Fancy Worsted
176	Wool Serge, also in Black	606	Fancy Cashmere	937	Wool Serge, also in Black	1406	Fancy Worsted
177	Wool Serge, also in Black	607	Fancy Cashmere	938	Wool Serge, also in Black	1407	Fancy Worsted
178	Wool Serge, also in Black	608	Fancy Cashmere	939	Wool Serge, also in Black	1408	Fancy Worsted
179	Wool Serge, also in Black	609	Grey Worsted	940	Wool Serge, also in Black	1409	Fancy Worsted
180	Wool Serge, also in Black	610	Wool Serge, also in Black	941	Wool Serge, also in Black	1410	Fancy Worsted
181	Wool Serge, also in Black	611	8/8 Mixed Worsted	942	Wool Serge, also in Black	1411	Fancy Worsted
182	Fancy Cashmere	612	Fancy Worsted	943	Wool Serge, also in Black	1412	Fancy Worsted
183	Fancy Worsted	613	Fancy Cashmere	944	Wool Serge, also in Black	1413	Fancy Worsted
184	Fancy Worsted	614	Fancy Worsted	945	Wool Serge, also in Black	1414	Fancy Worsted
185	Fancy Cashmere	615	Grey Worsted	946	Wool Serge, also in Black	1415	Fancy Worsted
186	Fancy Cashmere	616	Fancy Worsted	947	Wool Serge, also in Black	1416	Fancy Worsted
187	Wool Serge, also in Black	617	Wool Serge, also in Black	948	Wool Serge, also in Black	1417	Fancy Worsted
188	Striped Blue Serge	618	Fancy Cashmere	949	Wool Serge, also in Black	1418	Fancy Worsted
189	Fancy Cashmere	619	Fancy Cashmere	950	Wool Serge, also in Black	1419	Fancy Worsted
190	Fancy Cashmere	620	Wool Serge, also in Black	951	Wool Serge, also in Black	1420	Fancy Worsted
191	Wool Serge, also in Black	621	Wool Serge, also in Black	952	Wool Serge, also in Black	1421	Fancy Worsted
192	Wool Serge, also in Black	622	Wool Serge, also in Black	953	Wool Serge, also in Black	1422	Fancy Worsted
193	Wool Serge, also in Black	623	Wool Serge, also in Black	954	Wool Serge, also in Black	1423	Fancy Worsted
194	Wool Serge, also in Black	624	Wool Serge, also in Black	955	Wool Serge, also in Black	1424	Fancy Worsted
195	Wool Serge, also in Black	625	Wool Serge, also in Black	956	Wool Serge, also in Black	1425	Fancy Worsted
196	Wool Serge, also in Black	626	Wool Serge, also in Black	957	Wool Serge, also in Black	1426	Fancy Worsted
197	Wool Serge, also in Black	627	Wool Serge, also in Black	958	Wool Serge, also in Black	1427	Fancy Worsted
198	Wool Serge, also in Black	628	Wool Serge, also in Black	959	Wool Serge, also in Black	1428	Fancy Worsted
199	Wool Serge, also in Black	629	Wool Serge, also in Black	960	Wool Serge, also in Black	1429	Fancy Worsted
200	Wool Serge, also in Black	630	Wool Serge, also in Black	961	Wool Serge, also in Black	1430	Fancy Worsted
201	Wool Serge, also in Black	631	Wool Serge, also in Black	962	Wool Serge, also in Black	1431	Fancy Worsted
202	Wool Serge, also in Black	632	Wool Serge, also in Black	963	Wool Serge, also in Black	1432	Fancy Worsted
203	Wool Serge, also in Black	633	Wool Serge, also in Black	964	Wool Serge, also in Black	1433	Fancy Worsted
204	Wool Serge, also in Black	634	Wool Serge, also in Black	965	Wool Serge, also in Black	1434	Fancy Worsted
205	Wool Serge, also in Black	635	Wool Serge, also in Black	966	Wool Serge, also in Black	1435	Fancy Worsted
206	Wool Serge, also in Black	636	Wool Serge, also in Black	967	Wool Serge, also in Black	1436	Fancy Worsted
207	Wool Serge, also in Black	637	Wool Serge, also in Black	968	Wool Serge, also in Black	1437	Fancy Worsted
208	Wool Serge, also in Black	638	Wool Serge, also in Black	969	Wool Serge, also in Black	1438	Fancy Worsted
209	Wool Serge, also in Black	639	Wool Serge, also in Black	970	Wool Serge, also in Black	1439	Fancy Worsted
210	Wool Serge, also in Black	640	Wool Serge, also in Black	971	Wool Serge, also in Black	1440	Fancy Worsted
211	Wool Serge, also in Black	641	Wool Serge, also in Black	972	Wool Serge, also in Black	1441	Fancy Worsted
212	Wool Serge, also in Black	642	Wool Serge, also in Black	973	Wool Serge, also in Black	1442	Fancy Worsted
213	Wool Serge, also in Black	643	Wool Serge, also in Black	974	Wool Serge, also in Black	1443	Fancy Worsted
214	Wool Serge, also in Black	644	Wool Serge, also in Black	975	Wool Serge, also in Black	1444	Fancy Worsted
215	Wool Serge, also in Black	645	Wool Serge, also in Black	976	Wool Serge, also in Black	1445	Fancy Worsted
216	Wool Serge, also in Black	646	Wool Serge, also in Black	977	Wool Serge, also in Black	1446	Fancy Worsted
217	Wool Serge, also in Black	647	Wool Serge, also in Black	978	Wool Serge, also in Black	1447	Fancy Worsted
218	Wool Serge, also in Black	648	Wool Serge, also in Black	979	Wool Serge, also in Black	1448	Fancy Worsted
219	Wool Serge, also in Black	649	Wool Serge, also in Black	980	Wool Serge, also in Black	1449	Fancy Worsted
220	Wool Serge, also in Black	650	Wool Serge, also in Black	981	Wool Serge, also in Black	1450	Fancy Worsted
221	Wool Serge, also in Black	651	Wool Serge, also in Black	982	Wool Serge, also in Black	1451	Fancy Worsted
222	Wool Serge, also in Black	652	Wool Serge, also in Black	983	Wool Serge, also in Black	1452	Fancy Worsted
223	Wool Serge, also in Black	653	Wool Serge, also in Black	984	Wool Serge, also in Black	1453	Fancy Worsted
224	Wool Serge, also in Black	654	Wool Serge, also in Black	985	Wool Serge, also in Black	1454	Fancy Worsted
225	Wool Serge, also in Black	655	Wool Serge, also in Black	986	Wool Serge, also in Black	1455	Fancy Worsted
226	Wool Serge, also in Black	656	Wool Serge, also in Black	987	Wool Serge, also in Black	1456	Fancy Worsted
227	Wool Serge, also in Black	657	Wool Serge, also in Black	988	Wool Serge, also in Black	1457	Fancy Worsted
228	Wool Serge, also in Black	658	Wool Serge, also in Black	989	Wool Serge, also in Black	1458	Fancy Worsted
229	Wool Serge, also in Black	659	Wool Serge, also in Black	990	Wool Serge, also in Black	1459	Fancy Worsted
230	Wool Serge, also in Black	660	Wool Serge, also in Black	991	Wool Serge, also in Black	1460	Fancy Worsted
231	Wool Serge, also in Black	661	Wool Serge, also in Black	992	Wool Serge, also in Black	1461	Fancy Worsted
232	Wool Serge, also in Black	662	Wool Serge, also in Black	993	Wool Serge, also in Black	1462	Fancy Worsted
233	Wool Serge, also in Black	663	Wool Serge, also in Black	994	Wool Serge, also in Black	1463	Fancy Worsted
234	Wool Serge, also in Black	664	Wool Serge, also in Black	995	Wool Serge, also in Black	1464	Fancy Worsted
235	Wool Serge, also in Black	665	Wool Serge, also in Black	996	Wool Serge, also in Black	1465	Fancy Worsted
236	Wool Serge, also in Black	666	Wool Serge, also in Black	997	Wool Serge, also in Black	1466	Fancy Worsted
237	Wool Serge, also in Black	667	Wool Serge, also in Black	998	Wool Serge, also in Black	1467	Fancy Worsted
238	Wool Serge, also in Black	668	Wool Serge, also in Black	999	Wool Serge, also in Black	1468	Fancy Worsted
239	Wool Serge, also in Black	669	Wool Serge, also in Black	1000	Wool Serge, also in Black	1469	Fancy Worsted

8
200

Description

- | | | | |
|------|----------------------------|------|-----------------------------|
| 1500 | Mixed Worsted | 1570 | Fancy Cassimere |
| 1501 | Brown Thibet | 1571 | Fancy Worsted |
| 1502 | Fancy Cassimere | 1572 | Fancy Cassimere |
| 1503 | Blue Thibet, also in black | 1573 | Fancy Green Worsted |
| 1504 | Cotton Worsted | 1574 | Blue Worsted, also in black |
| 1505 | Mixed Worsted | 1575 | Fancy Cassimere |
| 1506 | Fancy Cassimere | 1576 | Fancy Striped Kersey |
| 1507 | Fancy Cassimere | 1577 | Silk Mixed Worsted |
| 1508 | Fancy Cassimere | 1578 | Fancy Striped Worsted |
| 1509 | Green Cassimere | 1579 | Fancy Cassimere |
| 1510 | Fancy Worsted | 1580 | Striped Blue Serge |
| 1511 | Fancy Cassimere | 1581 | Fancy Cassimere |
| 1512 | Fancy Cassimere | 1582 | Fancy Striped Kersey |
| 1513 | Fancy Cassimere | 1583 | Fancy Worsted |
| 1514 | Green Worsted | 1584 | Fancy Cassimere |
| 1515 | Fancy Cassimere | 1585 | Fancy Worsted |
| 1516 | Fancy Mixed Worsted | 1586 | Fancy Striped Mixed Worsted |
| 1517 | Fancy Cassimere | 1587 | Fancy Cassimere |
| 1518 | Fancy Cassimere | 1588 | Fancy Cassimere |
| 1519 | Fancy Cassimere | 1589 | Blue Kersey, also in black |
| 1520 | Black Twill Thibet | 1590 | Fancy Striped Worsted |
| 1521 | Fancy Cheviot | 1591 | Fancy Cassimere |
| 1522 | Fancy Worsted | 1592 | Blue Worsted, also in black |
| 1523 | Fancy Worsted | 1593 | Fancy Cassimere |
| 1524 | Fancy Cassimere | 1594 | Fancy Worsted |
| 1525 | Fancy Cassimere | 1595 | Fancy Worsted |
| 1526 | Fancy Cassimere | 1596 | Fancy Cassimere |
| 1527 | Blue Serge, also in black | 1597 | Grey Diagonal Worsted |
| 1528 | Black Worsted | 1598 | Fancy Worsted |
| 1529 | Fancy Cassimere | 1599 | Fancy Cassimere |
| 1530 | Fancy Cassimere | 1600 | Fancy Cassimere |
| | | 1601 | Blue Crepe, also in black |

of Samples



- | | | | |
|------|--------------------------------------|------|---------------------------|
| 1641 | Grey Worsted | 1710 | Fancy Grey Worsted |
| 1642 | Fancy Cassimere | 1711 | Black Worsted |
| 1643 | Fancy Worsted | 1712 | Fancy Grey Worsted |
| 1644 | Blue Serge, also in black | 1713 | Fancy Cassimere |
| 1645 | Grey Worsted | 1714 | Fancy Worsted |
| 1646 | Fancy Worsted | 1715 | Fancy Worsted |
| 1647 | Black Worsted | 1716 | Silk Mixed Worsted |
| 1648 | Fancy Worsted | 1717 | Fancy Grey Worsted |
| 1649 | Fancy Worsted | 1718 | Fancy Worsted |
| 1650 | Fancy Worsted | 1719 | Silk Mixed Worsted |
| 1651 | Black Worsted | 1720 | Fancy Worsted |
| 1652 | Black Unfinished Worsted | 1721 | Fancy Cassimere |
| 1653 | Fancy Worsted | 1722 | Striped Grey Worsted |
| 1654 | Fancy Grey Cassimere | 1723 | Silk Mixed Worsted |
| 1655 | Brown Worsted | 1724 | Blue Serge, also in black |
| 1656 | Grey Worsted | 1725 | Fancy Grey Worsted |
| 1657 | Striped Blue Serge | 1726 | Fancy Worsted |
| 1658 | Fancy Worsted | 1727 | Fancy Worsted |
| 1659 | Grey ² Worsted | 1728 | Fancy Worsted |
| 1660 | Fancy Clay Diagonal, also in black | 1729 | Fancy Striped Kersey |
| 1661 | Fancy Cassimere | 1730 | Black Dress Worsted |
| 1662 | Fancy Cassimere | 1731 | Fancy Worsted |
| 1663 | Blue Worsted, also in black | 1732 | Fancy Grey Worsted |
| 1664 | Fancy Blue Worsted | 1733 | Fancy Worsted |
| 1665 | Fancy Brown Worsted | 1734 | Fancy Worsted |
| 1666 | Fancy Worsted | 1735 | Fancy Unfinished Worsted |
| 1667 | Fancy Green Worsted | 1736 | Fancy Cassimere |
| 1668 | Blue Serge, also in black | 1737 | Black Striped Worsted |
| 1669 | Fancy Worsted | 1738 | Silk Mixed Worsted |
| 1670 | Fancy Green Worsted | 1739 | Herringsbone Worsted |
| 1671 | Grey Worsted | 1740 | Fancy Unfinished Worsted |
| 1672 | Black Unfinished Worsted | 1741 | Striped Grey Worsted |
| 1673 | Fancy Worsted | 1742 | Fancy Grey Worsted |
| 1674 | Fancy Brown Cassimere | 1743 | Fancy Worsted |
| 1675 | Blue Kersey, also in black | 1744 | Fancy Worsted |
| 1676 | Blue Diagonal Worsted, also in black | 1745 | Fancy Worsted |
| 1677 | Fancy Green Worsted | 1746 | Grey Striped Worsted |
| 1678 | Fancy Worsted | 1747 | Silk Mixed Worsted |
| | | 1748 | Black Unfinished Worsted |
| | | 1749 | Fancy Grey Worsted |
| | | 1750 | Fancy Worsted |

1668	Blue Serge, also in black	1738	Silk Mixed Worsted
1669	Fancy Worsted	1739	Herringbone Worsted
1670	Fancy Green Worsted	1740	Fancy Unfinished Worsted
1671	Grey Worsted	1741	Striped Grey Worsted
1672	Black Unfinished Worsted	1742	Fancy Grey Worsted
1673	Fancy Worsted	1743	Fancy Worsted
1674	Fancy Brown Cassimere	1744	Fancy Worsted
1675	Blue Kersey, also in black	1745	Fancy Worsted
1676	Blue Diagonal Worsted, also in black	1746	Grey Striped Worsted
1677	Fancy Green Worsted	1747	Silk Mixed Worsted
1678	Fancy Worsted	1748	Black Unfinished Worsted
1679	Fancy Blue Serge	1749	Fancy Grey Worsted
1680	Fancy Black Worsted	1750	Fancy Worsted
1681	Fancy Worsted	1751	Silk Mixed Worsted
1682	Fancy Grey Cassimere	1752	Silk Mixed Worsted
1683	Fancy Worsted	1753	Grey Striped Worsted
1684	Fancy Worsted	1754	Fancy Worsted
1685	Fancy Cassimere	1755	Silk Striped Worsted
1686	Fancy Worsted	1756	Fancy Worsted
1687	Blue Clay Diagonal	1757	Fancy Striped Worsted
1688	Fancy Worsted	1758	Grey Striped Worsted
1689	Fancy Cassimere	1759	Blue English Worsted, also in blk
1690	Grey Pin Check	1760	Silk Mixed Worsted
1691	Fancy Brown Worsted	1761	Fancy Unfinished Worsted
1692	Black Unfinished Worsted	1762	Fancy Worsted
1693	Fancy Worsted	1763	Grey Striped Worsted
1694	Fancy Cassimere	1764	Blue English Worsted, also in blk
1695	Blue Serge	1765	Grey English Worsted
1696	Fancy Worsted	1766	English Worsted
1697	Fancy Worsted	1767	Imported Black Dress Worsted
1698	Fancy Worsted	1768	English Worsted
1699	Grey Worsted	1769	Fancy English Worsted
1700	Blue Serge, also in black	1770	Fancy English Worsted
1701	Fancy Grey Worsted	1771	Fancy Brown English Worsted
1702	Fancy Green Worsted	1772	Blue English Worsted, also in blk
1703	Silk Mixed Worsted	1773	Fancy English Worsted
1704	Fancy Brown Worsted	1774	Fancy English Worsted
1705	Grey Worsted	1775	Fancy English Worsted
1706	Striped Panting	1776	Imported Unfinished Worsted
1707	Fancy Worsted	1777	Fancy English Worsted
1708	Fancy Striped Serge	1778	Fancy English Worsted
1709	Striped Panting	1779	Fancy English Worsted

1529	Fancy Cassimere	1599	Fancy Cassimere
1530	Fancy Cassimere	1600	Fancy Cassimere
1531	Fancy Cassimere	1601	Blue Crepe, also in black
1532	Fancy Cassimere	1602	Green Worsted
1533	Black Thibet	1603	Fancy Worsted
1534	Fancy Blue Worsted	1604	Fancy Silk Mixed Worsted
1535	Fancy Cheviot	1605	Fancy Cassimere
1536	Fancy Cassimere	1606	Fancy Cassimere
1537	Fancy Mixed Worsted	1607	Fancy Worsted
1538	Blue Thibet, also in black	1608	Blue Serge, also in black
1539	Fancy Worsted	1609	Grey Worsted
1540	Fancy Blue Serge	1610	Fancy Cassimere
1541	Fancy Grey Cassimere	1611	Silk Mixed Cassimere
1542	Fancy Cassimere	1612	Fancy Worsted
1543	Fancy Worsted	1613	Fancy Cassimere
1544	Fancy Worsted	1614	Fancy Worsted
1545	Fancy Cassimere	1615	Grey Worsted
1546	Fancy Cassimere	1616	Fancy Worsted
1547	Blue Serge, also in black	1617	Blue Doeskin, also in black
1548	Striped Blue Serge	1618	Fancy Cassimere
1549	Fancy Cassimere	1619	Brown Kersey
1550	Fancy Cassimere	1620	Striped Blue Serge
1551	Black Mixed Dress Worsted	1621	Fancy Worsted
1552	Striped Brown Worsted	1622	Fancy Cassimere
1553	Fancy Cassimere	1623	Black Unfinished Worsted
1554	Fancy Worsted	1624	Silk Mixed Worsted
1555	Fancy Worsted	1625	Fancy Cassimere
1556	Fancy Grey Cassimere	1626	Fancy Cassimere
1557	Fancy Worsted	1627	Drab Worsted
1558	Fancy Slate Worsted	1628	Silk Mixed Worsted
1559	Blue Clay Diagonal, also in black	1629	Brown Worsted
1560	Fancy Cassimere	1630	Fancy Cassimere
1561	Fancy Cassimere	1631	Fancy Cassimere
1562	Fancy Worsted	1632	Fancy Worsted
1563	Black Thibet	1633	Fancy Cassimere
1564	Fancy Cheviot	1634	Fancy Brown Cassimere
1565	Fancy Striped Worsted	1635	Fancy Worsted
1566	Fancy Worsted	1636	Fancy Blue Serge
1567	Striped Blue Serge	1637	Fancy Worsted
1568	Striped Oxford Kersey	1638	Fancy Worsted
1569	Fancy Striped Worsted	1639	Black Dress Worsted
		1640	Grey Worsted