



84-270

84-271

84-272

84-273

* Table of Size for These Coats.

To secure correct fit order the same size as you would a dress.	Misses' Size.	Bust.	Length.
14	32	43 in.	
16	34	45 in.	
18	36	47 in.	
20	38	49 in.	

Of Warm All-Wool Blanket Velour 20⁰⁰
 Delivered
 Colors Brown (as shown), Navy, Taupe, Burgundy or Black.
 See table above for sizes.

84-270 Its softness and warmth make All-wool Blanket Velour a general favorite for the fashioning of attractive Winter coats. It adapts itself splendidly to the straight well-cut lines of this Misses' "EATON-MADE" model shown in above illustration, which to ensure greater comfort is lined in sleeves and to hip depth with satin. A rounded convertible collar, that may also be worn open to form revers, will be the source of much comfort. Note the shaped pieces on stitched cuffs, marked by a button. All-around belt closes with large buttons. Two pockets displaying buttons on each section are a smart and convenient feature of this moderately priced coat. **State size and color. Price, delivered, 20.00**

Fashionable All-Wool Blanket Velour Coat 24⁵⁰
 Delivered
 Colors Navy (as shown), Brown, Taupe, Burgundy or Black.
 See table above for sizes.

84-271 The smart distended hip line is exploited very cleverly on this Misses' modish Coat of a splendid quality All-wool Blanket Velour. A pin-tucked, button-trimmed panel is inset at sides and forms the pockets, which are buttoned to give fullness at hips. Pin tucks provide an effective trimming on the convertible collar which closes like front with novelty buttons. They also appear on sleeves and are uniquely arranged with three smaller buttons. The belt, which is cut in four pieces, has buttons at back and buttoned-on section at front. This attractive model warmly lined throughout with satin bears the "EATON-MADE" label, which assures you of careful making and dependability. **State size and color. Price, delivered, 24.50**

Misses' Warm Coat, Smart and Practical 23⁵⁰
 Delivered
 Colors Burgundy (as shown), Navy or Grey, Brown.
 See table above for sizes.

84-272 Stylish and very comfortable is this Misses' serviceable Coat of good-wearing Whitney Chinchilla, (a wool material woven with a very small percentage of cotton.) Convertible collar which is shown worn open is just as becoming when buttoned snugly beneath the chin. A button shows where sections of stitched cuffs cross one another on the roomy Raglan sleeves. Capacious pockets are tucked and show the result of clever designing in their unusual outline. Rows of tucks extend across back below the button-trimmed belt and are met at sides by attractive buttons. This desirable "EATON-MADE" coat, to emphasize its good features, is lined in sleeves and to hip depth with satin. **State size and color. Price, delivered, 23.50**

Inexpensive Coat 18⁵⁰
 In a Modish Style
 Delivered
 Colors Green (as shown), Navy, Burgundy, Brown or Black.
 See table above for sizes.

84-273 Splendid value is represented in this "EATON-MADE" Coat of Wool and Cotton Cheviot with a soft blanket finish. It is a model that should be deservedly popular. Buttons form an important part of the trimming and along with narrow tucks prove most decorative. Together they appear on the panel-like pocket flaps, convertible collar and front and back straps of the all-around four-piece belt. Buttons also close the front and are used on the stitched cuffs. Firm satin lines the sleeves and to waist depth, and adds to the service and comfort of this coat, here offered at a most attractive price. **State size and color when sending in your order. Price, delivered, 18.50**

All-Wool Blanket Velour 1975—
Delivered

Colors Brown (as shown), Navy, Burgundy or Taupe.

Junior Misses' Size	Bust	Length
11	31	41 ins.
13	33	43 ins.
15	35	45 ins.
17	37	47 ins.

84-281 All-wool Blanket Velour has such a soft, attractive appearance that it is often used for just such a becoming Coat as this for junior misses. The comfortable convertible collar may be worn open or closed as the weather dictates. Inset pockets have buttoned tops below which two rows of fine tuckings extend. A neatly shaped buckle is slipped through belt at center of back; the belt closes at front with two buttons to match the smaller ones on the stitched cuffs. Satton in sleeves and to waist depth lines this "EATON-MADE" coat. Delivered—19.75



Fine All-Wool Silvertone 30.00—
Delivered

Colors Navy (as shown), Reindeer Brown, Taupe or Burgundy.

Junior Misses' Size	Bust	Length
11	31	41 ins.
13	33	43 ins.
15	35	45 ins.
17	37	47 ins.

84-283 The popular All-wool Silvertone Velour is a particularly happy choice for this stylish coat. The back with its straight hanging fullness and novelty buttons is very swapper, and the front is equally smart. It is cleverly cut, and has inset pockets emphasized by the two pointed button-trimmed tabs. Relieved cuffs display smaller buttons, and rounded convertible collar fastens with larger ones. A narrow belt encircles the waist, buttoned at front of this "EATON-MADE" model lined throughout with satin. Price, delivered—30.00



When ordering be sure to state size and color desired. Order coat of same size as you would a dress to secure correct fit.

Junior Misses' Cheviot Coat 16.75—
Delivered

Colors Burgundy (as shown), Brown, Navy, Green or Black.

Junior Misses' Size	Bust	Length
11	31	41 ins.
13	33	43 ins.
15	35	45 ins.
17	37	47 ins.

84-280 Here is a Junior Misses' smart inexpensive Coat of Wool and Cotton Cheviot with a soft Blanket Velour collar. Collar is quite unusual in cut and may be worn open or buttoned to fit snugly beneath the chin. The stitched pointed cuffs are caught with a single button, while numerous small ones are added on shaped turn-back pieces on inset pockets. A row of larger buttons is arranged at side, and smaller ones trim back of belt with buttoned-on front section. A lining in sleeves and to waist of satton completes this warm "EATON-MADE" coat which is splendid value. Price, delivered—13.75



Of Fashionable All-Wool Velour 27.50—
Delivered

Colors Green (as shown), Navy, Brown, Taupe or Burgundy.

Junior Misses' Size	Bust	Length
11	31	41 ins.
13	33	43 ins.
15	35	45 ins.
17	37	47 ins.

84-284 There's a trim smartness about the back of this Winter Coat of the fashionable All-wool Velour. It shows novelty buttons at either side of the; they tuck on panel, while below waistline it falls in soft pleats. Very original are the large turned, button-ornamented pockets which add to the stylish effect of the front. Tucks follow the outlines of the jaunty convertible collar, while turn-back cuffs have points showing buttons, with larger ones on the unusually narrow belt. A lining throughout of satton is another very satisfying feature of this fashionable coat. Price, delivered—27.50



All-Wool Blanket Velour 20.75—
Delivered

Colors Navy (as shown), Brown, Burgundy or Taupe.

Junior Misses' Size	Bust	Length
11	31	41 ins.
13	33	43 ins.
15	35	45 ins.
17	37	47 ins.

84-282 Being fully fashioned of Heavy All-wool Blanket Velour this becoming Coat is bound to be warm and serviceable, and its trimmings of tucks and buttons vouch for its modishness. Fine tucks ending in tiny buttons first appear on convertible collar which may be worn open if preferred. They are also used on sleeve and have an equally pleasing effect on shaped pieces on lower part of patch pockets. Narrow tucked belt which controls the straight hanging fullness, shows two buttons at back and a black buckle where it fastens at side front. Lined throughout with satton. Price, delivered—20.75



**Moderately Priced
Silk-Faced Poplin 19⁷⁵**

(Illustrated Below) **Delivered**
Navy, Brown with Contrasting Brown, Green
with Self and Burgundy, Black with Black.
58-661 Decidedly attractive is this
"EATON-MADE" Dress of
Silk-faced Poplin. Its full skirt gains
a yoke effect by joining upper part to
lower portion beneath tuck. At the side are
pash ends trimmed with self-covered
buttons and fine silk cord. Similar cord
and French knots of silk flow trim front
of waist. Self-covered buttons appear on
sleeves. A white cotton lace-trimmed under-
bodice completes this pretty frock, finished
with faced hem. **Delivered... 19.75**

Sizes for 58-661 and 58-662

Bust Plus	Skirt Length
34, 36	38 in.
38, 40	38 in.
42, 44	38 in.

**Excellent Value
in All-Wool Serge 15⁷⁵**

(Illustrated Below) **Delivered**
Colors Brown (as shown), Black, Navy.
Material, style and trimming
58-662 feature this inexpensive One-
piece Dress. "EATON-MADE" of All-wool
Serge. The style follows the straight lines
now in vogue. Embroidery trimming in
fine silk braid and chain stitching outlines
V-neck and adorns front of belt. Buttons
are noted on cuff effect. The skirt, made
with gathered back has two inset pockets.
Closes on shoulder and side, and has white
cotton underbodice. **Delivered... 15.75**



58-660

58-663

58-664

**Satin-de-Chine
in Clever Design 33⁵⁰**

(Illustrated Above) **Delivered**
Colors Holland Blue (as shown), Grey
with Self and Blue, Navy with Self
and Burgundy, Black, All Black.

Bust Size	Skirt Length
34, 36	38 in.
38, 40	38 in.
42	38 in.

Fasted Hem.

58-660 Here is a best Dress of
lustrous "Satin-de-Chine"
that will delight you with its modish
design and trimmings. Stylish surprises
include fine white cotton
underbodice and bonnet
crossed vest of silk.
Full skirt achieves
distinction by its piec-
edged side panels with
lower part of Satin-de-
Chine attached beneath
collar of Georgette Crepe. At
the side of the softly
draped folds of this
"EATON-MADE"
model you will observe
the hand embroidered
motif of chenille, metal-
lic thread and beads that
adds a charming touch.
State size and color
when ordering. Price,
delivered... 33.50



Measure length of skirt from bottom
edge of lower waistband straight down
the front to length desired. Make no
allowance for high waisting.

**Delightful Silk
Crepe-de-Chine 30⁰⁰**

(Illustrated Above) **Delivered**
Colors Taupe (as shown), Holland
Blue with Coral and Grey,
Navy with Coral and Grey,
Black, All Black.

Bust Size	Skirt Length
34, 36	38 in.
38, 40	38 in.
42	38 in.

Fasted Hem.

58-663 This charming model
of soft Silk Crepe-de-
Chine emphasizes its narrow
by using knife pointed ruffles to
outline side panels in softly
gathered skirt. Fashion will
approve, too, of the choice of
wool for the hand-worked motifs
on bodice front,
further adorned
with silk flow chain
stitching to match
dash on back of
neck and on modish
bell sleeves. The
waist of this pretty
"EATON-MADE"
Dress closes on
shoulder, has low-
edged white net
foundation, a nif
joins skirt beneath
girdle that passes
through inverted
button. State size
and color when
ordering. Price,
delivered, 30.00



**Frock for
Milady's Wear 37⁵⁰**

(Illustrated Above) **Delivered**
Colors Copen (as shown), Navy with
Burgundy Beads, Brown with
Black and Contrasting Brown,
Black and All Black.

Bust Size	Skirt Length
34, 36	38 in.
38, 40	38 in.
42, 44	38 in.

Fasted Hem.

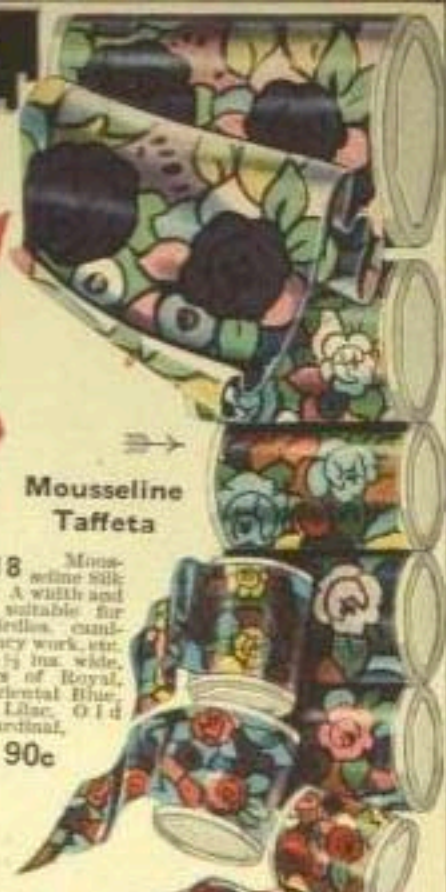
58-664 Satin-de-Chine in
pleasing combination
with Silk Georgette Crepe.
fashions this "EATON-MADE"
Dress which introduces some of
this season's pretty touches.
Beads are arranged in artistic
circular designs on the vest
and overskirt of
Georgette Crepe,
both of which have
an underlining of
China silk. Piec-
edged is the satin
band which borders
the tank. Buttons,
collars and cuffs of
self lend an ef-
fective note, while
a wide glide drapes
softly around the
waist. Jap. motif
fastens down the
side. State size
and color when
ordering. Price,
delivered 37.50



58-661

58-662

FANCY RIBBONS



Mousseline Taffeta

22-215 Splendid quality Mousseline Silk Ribbon in attractive pattern, 5-in. width; for cambricos, ribbon bags, fancy-work, etc. It is greatly in demand this season. Colors Sky, Pink, Sage, Old Rose, Amethyst, Light Green, Maize. Yard. 80c



Mousseline Taffeta

22-218 Mousseline Silk Ribbon. A width and quality suitable for bags, girdles, cambricos, fancy work, etc. About 5 1/2 ins. wide, in colors of Royal, Sage, Oriental Blue, Green, Lilac, Old Rose, Cardinal, Gold. Yard. 90c

Attractive Striped Taffeta

(Illustrated above)

22-214 Very attractive Striped Taffeta Silk Ribbon, in pleasing combination of spot effect ground with white stripes. Most suitable for hair bows; 4 ins. wide. Colors Old Rose, Maize, Sky, Pink, Light Green, French Blue, Cardinal, Myrtle, Navy. Price per yard..... 45c



Silk Moire

(Illustrated above)

22-217 Fancy Silk Moire Ribbon with satin stripe. This is a splendid, firm quality which will stand up nicely when tied. It is about 5 ins. wide, and makes an ideal hair ribbon. Colors Maize, Sky, Pink, Cardinal, Old Rose, Copen, Green, Black. Per yard. 69c



Hair Bow

22-221 Hair Bow, nicely tied. Will make an excellent gift; quality, width and colors as quoted in No. 22-207. Complete with fastener. 55c

Striped Taffeta

(Illustrated above)

22-216 Striped Silk Taffeta Ribbon, in striking combinations. It will make an acceptable addition to any collection of hair ribbons; also suitable for millinery, etc. Almost 4 1/2 ins. wide. White stripe with following Ground Colors: Red, Brown, Navy, Green, Sky, Black. Per yard..... 55c



Splendid Quality Silk Dresden

22-219 This splendid quality shaded Silk Dresden Ribbon, for use in cambricos, bags, girdles and other fancy articles you will be making up for gifts. About 5 1/2 ins. wide. Colors Pink, Sky, Maize, Nile, Copen, Lavender. Per yard..... 90c

Beautiful Silk Ribbon in Tartan Plaids

22-220 Taffeta silk Ribbon in tartan plaids makes very pleasing hair bows, and would be a very acceptable gift. 4 ins. wide. In colors of the following: Royal Stuart, red; 42nd Highlanders or Black Watch, navy; Victoria, white; MacDonald, green. Per yard..... 55c



Moire Taffeta

22-213 Beautiful Moire Taffeta Silk Ribbon, 5 ins. wide, suitable for hair bows, millinery, veils, etc. Colors White, Sky, Pink, Lavender, Cardinal, Navy, Brown, Old Rose, Purple, Sage, Hunter's Green, Black. Per yard..... 55c

All-Silk Taffeta

22-207 Heavy All-Silk Taffeta Ribbon, 5 ins. wide, firm weave, lustrous finish, for hair bows, hat bows, etc. Colors White, Green, Sky, Pink, Old Rose, Grey, Purple, Red, Cardinal, Navy, Copen, Garnet, Brown, Lavender, Hunter's Green, Black. Per yard..... 45c



56-914



56-911



56-949



56-950

Be sure to state
Size and Color
desired when
ordering

Brushed All-Wool Scarf and Cap

Colors Green (as shown), Rose, Copen.

56-914 This warm Two-piece Set of Brushed All-wool Worsted will add a touch of brightness to your Winter outfit. Points on cap are caught by pompons. Scarf tucks itself snugly beneath the chin and is about 11 ins. wide and 36 ins. long, not measuring fringe. **3.35**
State size and color. Price.....

Very Jaunty Two-Piece Set

Colors American Beauty and White (as shown), Copen, and White.

56-911 Very smart is the tam of this Two-piece "EATON-MADE" Set of All-wool Worsted. From beneath the pompon at top issues a cord from which dangle two smaller ones. Scarf wraps snugly about neck and measures about 10 ins. wide and 56 ins. long, not including fringe. State size and color. Price..... **2.75**

Warm and Pretty All-Wool Pullover

Colors Turquoise (as shown), American Beauty, Mauve. Bust sizes 36, 40, 44.

56-949 Great pleasure and comfort will you have from this All-wool Worsted Pullover Sweater that shows a fancy stripe effect on bodice and sleeves and uses plain stitch for cuffs, skirt section and collar with pompon. The moderate price of this "EATON-MADE" model is a point worth noting. State size and color. Price, delivered..... **5.00**

Attractive All-Wool Pullover

Colors Rose (as shown), Copet, Black. Bust sizes 36, 40, 44.

56-950 These Pullover Sweaters very becomingly complete one's costume besides affording additional warmth. This "EATON-MADE" model is of All-wool Worsted, knit to give a striped effect. A finer stitch is used on the cuffs and torado-shaped collar which is finished by pompon. State size and color. Price, delivered..... **5.00**

Modish Ripple Pullover Sweater

Colors American Beauty (as shown), Turquoise, Purple. Bust sizes 36, 40, 44.

56-952 There is a great vogue for the ripple pullover sweater, and this one of All-wool Worsted is obtainable in three very popular colors. A ribbed pattern is chosen for body and sleeves, while cuffs and skirt section gathered by knitted cord to form ripples are knit in striped effect. Becoming roll collar is finished with soft pompon. State size and color. Price, delivered..... **7.95**



56-952



56-948

An Excellent Wool Sweater

Colors Nile and White (as shown), Rose and White, Turquoise and White. Bust sizes 36, 40, 44.

56-948 White is very effectively introduced in the pompon tassel and prettily shaped collar of this All-wool Worsted Pullover Sweater. It is knit in a fancy striped effect with pearl stitch at the sleeves and at the waistband where it fits snugly, thus allowing the waist to blouse. The pretty style and moderate price of this sweater will make it a popular choice. State size and color. Delivered.... **6.50**



56-946



56-912



56-913



56-945



56-910



56-947



56-951

For colors other than those illustrated, see descriptions below :

Warm Knitted Scarf and Cap Set

Colors Copen and Gold (as shown), Cardinal and White.

56-912 Here is a moderately priced Set of wool face with cotton back that will provide welcome warmth in chilly weather. Contrasting color is used for stripes on fringed scarf and for stripes and pom-pom on the attractive cap. Scarf is about 7 ins. wide and 48 ins. long, not measuring fringe. Price..... 2.75

For Sports and General Wear

Colors Turquoise (as shown), Rose, Buff.

56-910 Delightfully soft and cozy is this Set of Brushed Wool with cotton back. It consists of unusually wide scarf finished with fringe and such a becoming 'Tom o' Shanter' that boasts a fluffy pom-pom, and has plain band knit in elastic-ribbed stitch. Scarf is about 15 ins. wide and 64 ins. long, not measuring fringe. Price..... 4.50

Pretty All-Wool Brushed Worsted Set

Colors Rose (as shown), Copen.

56-913 When you are enjoying some Winter sport or a brisk walk in the crisp cold air, how you will appreciate the warmth and comfort of this Brushed All-wool Worsted Set. Scarf has fringed ends, and top is finished with snugly-fitting band. Scarf is about 9 ins. wide and 50 ins. long, not measuring fringe. Price..... 3.95

All-Wool Worsted Pullover

American Beauty and Black (as shown), Copen and Light Grey, All Purple. Bust sizes 36, 40, 44.

56-946 Remarkably good value is this "EATON-MADE" Pullover Sweater of All-wool Worsted. It will so often be just the right completion for your outdoor costume, and will be worn indoors on many a cold day. Contrasting color is used as illustrated, except on the all-purple model. Price..... 4.75

Attractive in Style and Price

Colors Buff and Turquoise (as shown), Turquoise and Maize, Purple and White. Bust sizes 36, 40, 44.

56-945 Fashion looks with great favor on the flit effect shown by the laced collar of this All-wool Worsted Pullover. Fancy stitch is used for upper portion and sleeves and chain stitch in double ply forms lower section and cuffs. State size and color. Price..... 4.50

All-Wool Worsted Pullover Sweater

Colors Purple (as shown), Rose, Turquoise. Bust sizes 36, 40, 44.

56-947 The becomingly shaped roll collar laced with tasseled crochet cord is a style feature of this "EATON-MADE" Pullover Sweater. This over model is knit in chain stitch of All-wool Worsted, and has an especial claim to favor in its moderate price. State size and color. Price, delivered..... 5.00

Smart All-Wool Pullover

(Illustrated to Right)

Colors Paddy Green (as shown), Copen, Purple. Bust sizes 36, 40, 44.

56-951 Smart, warm and serviceable will you find this Pullover Sweater. It is knit of All-wool Worsted to give a striped effect, while purling forms cuffs and shirt section. Becoming Tuxedo collar has stripe in white to match its soft fluffy pom-pom. Price, delivered..... 5.95



56-939



56-941



56-940

**Comfortable,
Becoming Sweater**

Colors: Maroon (as shown), Emerald, Copet, Rose.
Best size: 36, 40, 44.
56-939 Outdoor sports will have an added zest if you are the happy possessor of this warm, All-wool, Worsted Sweater, knit in a fancy stripe effect. Its style makes it appropriate, too, for general wear. Convertible collar, handy pockets, tasseled sash.
Price, delivered..... **8.50**

Stylish All-Wool Sweater

Colors: Green (as shown), Rose, Maroon.
Best size: 36, 40, 44.
56-938 An attractive, All-wool Worsted Sweater Coat, displaying a very effective fancy stitch. Modish tuxedo collar is in plain weave to match front band, turn-back cuffs, pocket tops and tasseled sash.
Price, delivered..... **8.00**

Serviceable Sweater Coat

Colors: Belgian Blue and Buff (as shown), Purple and White, American Beauty and White.
Best size: 36, 40, 44.
56-941 Warm and heavy enough to wear for winter sports is this All-wool Sweater Coat. Sailor collar, cuffs, patch pockets and bottom edge, are striped in contrasting color; tasseled girdle.
Price, delivered..... **10.00**

For Cold Weather Wear

Colors: Brown (as shown), Maroon, Navy.
Best size: 36, 40, 44.
56-937 Excellent value is this serviceable, comfortably heavy Sweater, knit in chain stitch of worsted with union back; in popular belted style; convertible collar, turn-back cuffs, and pockets.
Price, delivered..... **5.95**

Jaunty Sweater Coat

Colors: Purple and White (as shown), Turquoise and White, Black and White.
Best size: 36, 40, 44.
56-940 White stripes on square collar and turn-back cuffs trim this smart "EATON-MADE" All-wool Sweater Coat. Two patch pockets with tops in fancy stitch below tasseled girdle.
Price, delivered..... **8.95**

Very Smartly Trimmed

Colors: Mint and Turquoise (as shown), Oriental and Apricot, Strawberry and White.
Best size: 36, 40, 44.
56-943 The contrasting border in conventional design on collar and turn-back cuffs features this All-wool Sweater Coat. Lapel and front band, pull-through belt, turn-back cuff, and pocket tops show fancy stitch.
Price, delivered..... **15.00**

All-Wool Sweater Coat

Colors: American Beauty, Apricot and Kelly (as shown), Kelly with White and Rose, Black with White and Purple.
Best size: 36, 40, 44.
56-942 Comfortable and becoming, All-wool Sweater Coat, knit in ribbed stitch. Tuxedo collar, cuffs, pocket flaps and girdle tasseled snow attractive, contrasting stripes.
Price, delivered..... **15.00**

Be Sure to state
Size and Color
when Ordering



56-943



56-938

56-937



56-942



Becoming Middy Dress

Sizes 2, 3, 4, 5, 6 years
Length 19, 21, 23, 25, 28
72-764. This youthful Two-piece dress of sturdy Percale is "EATON-MADE" - Slip-on vest blouse that has all work done buttoned to hand and hand-trimmed collar and cuffs of white Jean. Pleated skirt is attached to white cotton undershirt that buttons up back. In Blue only. Price..... 3.25
State size.

Popular Price
Sizes 2, 3, 4, 5, 6 years
Length 19, 21, 23, 25, 28
72-763. Dress of black and white Cotton Check, buttoned up back. Dress made of cotton, trimmed with red. Price..... 2.95

Navy or Brown
Sizes 2, 3, 4, 5, 6 years
72-765. In 1 or 2
Suggests of Warm, Youthful
Cardigan; button down front;
pocket, drop seat, elastic at
knee. Price..... 4.25

All-Wool Serge

Sizes 2, 3, 4, 5, 6 years
Length 19, 21, 23, 25, 28
72-750. Great quality All-wool
Serge. In fashion-plaited skirt,
white serge bodice with ribbed tie-
up. Low back embroidery on front
that has two pockets. Navy
Blue only. Delivered..... 7.95

Useful Dress

Colors Garnet or Navy
Sizes 2, 3, 4, 5, 6 years
Length 19, 21, 23, 25, 28
72-760. Moderately-
plaid Cotton Serge. Bodice
lined. Button-trimmed
placket on bodice front, white
cotton collar. Price..... 2.65

Blue only
Sizes 2, 3, 4, 5, 6 years
72-766. Durable Drill
Kangaroo. Will stand hard wear
and set well easily. Have drop
waist, pocket, convertible collar
and elastic at knee. Price..... 2.35

Percale Dress

Colors Pink (as shown),
Blue
Sizes 2, 3, 4, 5, 6 years
72-767. This Percale
Wash Dress is excellent value.
It buttons up back, and has
white lawn collar, skirt
material at back and also
shows two hot points with
button-trimmed points. In-
cludes white, all-around leg
pockets. State size. Price..... 2.00
and color. Price..... 2.00



Durable Eiderdown

Color Red only
Sizes 2, 3, 4, 5, 6 years
72-860. Warm flannel-
like. Like a "candy-
top" in style of soft, cozy
eiderdown showing
diamond pattern. Button-
down edge with collar,
pocket and sleeve, white
lined and tie at back,
and a larger eye opening
waist. State size. Price..... 3.65

Trim Sailor Dress

Color Navy only
Sizes 2, 3, 4, 5, 6 years
Length 19, 21, 23, 25, 28
72-758. Lustrous
sailor dress of cotton serge,
with long waist and peaked
collar. Small white collar
and sleeve, and
buttoned tie at back. Price..... 2.45

Velveteen

Colors Green or Wine
Sizes 2, 3, 4, 5, 6 years
Length 19, 21, 23, 25, 28
72-756. Soft Velveteen
Dress made with pink and
plaid silk. Matching on
rounded collar and button-
trimmed belt, with tie
Delivered..... 5.00

Jaunty Sailor

Color Navy only
Sizes 2, 3, 4, 5, 6 years
Length 19, 21, 23, 25, 28
72-761. Sailor Dress
of durable quality cotton
and wool serge. It has all
around buttoned "Dicky"
Collar and sleeve
buttoned. Delivered..... 6.25

Serge Dress with Bloomers

Color as shown only. Sizes 2, 3, 4, 5, 6 years
Length 19, 21, 23, 25, 28
72-769. "EATON-MADE" Cotton Serge
Bodice (two eye dress) pink and buttoned belt.
Hand-trimmed sleeve, collar and patch
pockets; separate bloomers. Price..... 3.65

Child's Bloomer Dress

Color as shown only. Sizes 2, 3, 4, 5, 6 years
Length 19, 21, 23, 25, 28
72-767. Black and white Cotton Check
Bodice (two eye dress) pink and buttoned belt.
"EATON-MADE" Dress, unusual with feet placed
on outer portion and cuffs. Separate
bloomers have two waistband. Price..... 3.25

Cosy Kimono

Color Blue only
Sizes 2, 3, 4, 5, 6 years
72-859. A special
kimono for Christmas gift.
Kimono is made of cotton
Eiderdown with floral pat-
tern. Has buttoned neck at
back and waist, and button
closing on collar, sleeve
and pocket. State
size. Price..... 3.25



Cosy Outfit
Colors Brown (as shown), Cardinal or Sage Blue. Sizes 2 to 5 years.
72-901 Warm "EATON-MADE" Suit, knit of sturdy cotton and wool mixture. It consists of double full, two-button sweater with two pockets, and leggings with crocheted draw at waist. State size and color. Price... **3.95**



Knitted Suit
Colors Navy (as shown), or Brown. Sizes 2 to 5 years.
72-919 Practical two-piece knitted cotton suit, has pull-over jersey that buttons on shoulder and double-fold collar. Trousers with drop seat, crocheted, all-wool lined, shows no waist. State size and color. Price... **2.15**



Winter-Weight
Color Heather (as shown). Sizes 2, 4, 6 years.
72-905 Think how cozy your kid will be in this heavy cotton and wool "EATON-MADE" Suit. Sweater knit, all-wool lined and trousers have buttons and buttonholes to hand. State size. Price... **3.95**



Bloomer Suit
Colors Brown (as shown), or Navy. Sizes 2, 4, 6 years.
72-906 "EATON-MADE" Suit, knit of cotton and wool, has heavy bloomers gathered on shoulder at waist and knee. Pull-over jersey buttons on double-fold collar and shoulder. State size and color. Price... **2.35**



Brush Finish
Colors Cardinal Brown or Sage Blue. Sizes 2 to 5 years.
72-902 "EATON-MADE" "Brushed" Wool and Cotton. Quilted, composed of double-fold, crocheted sweater with pockets, and leggings crocheted at waist with crocheted draw. Price... **4.25**



Comfortable Sweater
Colors Navy and Cardinal (as shown), or Brown and Fawn. Sizes 2, 4, 6 years.
72-915 Reversible cotton and wool sweater. Double full, with contrasting shade for collar, buttoned front, cuffs and patch pockets. State size and color. Price... **1.65**



Warm Jersey
Colors Brown (as shown), or Navy. Sizes 2, 4, 6 years.
72-914 "EATON-MADE" Jersey, buttons at neck and shoulder. Neckband and cuffs are warm, being double full. State size and color. Price... **2.25**



Useful Jersey
Colors Navy (as shown), Brown. Sizes 2, 4, 6 years.
72-913 This Full-over Jersey is knit of cotton and wool, and is buttoned on shoulder and double-fold collar. State size and color. Price... **1.50**



All-Wool Sweater
Colors Cardinal (as shown), or Sage Blue. Sizes 2, 4, 6 years.
72-912 "EATON-MADE" Sweater is moderately priced. Collar may be worn high or low. State size and color. Price... **3.50**



All-Wool Jersey
Color Heather only (as shown). Sizes 2, 4, 6 years.
72-916 Boys' All-wool knitted Jersey, is warm and comfortable, with double-fold at bottom, cuffs and collar. Closes at shoulder with buttons. State size. Price... **3.10**



Brushed Wool
Colors Copen with White, Rose with White. All-wool with a soft brush finish is used for this cozy scarf. About 5 inch wide and 50 inch long, not including fringe. Price... **1.00**



Pretty Scarf and Cap Set
Colors Copen (as shown), Rose. Sizes 2 to 6 years.
72-926 Scarf and Cap set of soft union yarn will ably protect the little head and shoulders. The scarf is about 8 inch wide and 48 inch long, not including tassel. State size and color. Price... **1.89**



Infant's Cloud and Toque
Color White only. Sizes 1, 2 and 3 years.
72-929 This Infant's set of soft All-wool Cloud and Toque is very beautiful. In addition to being warm and very cozy. Cloud is about 7 inch wide and 42 inch long, not including tassel. State size. Price... **1.75**



Cotton Knit Petticoat
Grey with White Trimming only. Sizes 2, 3, 4, 5, 6 years.
72-930 Moderately priced "EATON-MADE" Pull-over Petticoat, knit of fine cotton, heavily finished. Neck has tape run binding, armholes and skirt have crocheted edging. Price... **95c**



Cosy Petticoat
Colors Cardinal (as shown), Navy or Grey. Sizes 2, 4, 6 years.
72-931 Soft Cotton and wool knit Petticoat, "EATON-MADE" with shoulder straps, neat spring waist and heavy elastic at skirt, with border of different color. State size and color. Price... **1.50**



Child's All-Wool Petticoat
Navy, Cardinal and Navy, White with Blue. Sizes 2, 4, 6 years.
72-932 Soft All-wool with-wool Petticoat. Neck and arm-holes have crocheted edging; skirt border to 4 inch contrasting color. 2 and 4 years... **1.65**
6 years... **1.95**



Brushed All-Wool

Colors Copen (as shown), Cardinal.
72-904 Cozy knitted brushed wool suit. Double-fold cap covers ears, sweater has two pockets and leggings have elastic cord at waist.
 Size 2 years. Delivered..... **9.95**
 Size 3 and 4 years. Delivered..... **7.36**
 Size 5 years. Delivered..... **7.50**

Two-Piece

Colors Navy (as shown), Brown.
 Sizes 2 to 5 years.
72-907 "EATON-MADE" Suit. Will prove warm and serviceable. Pull-over jersey buttons on shoulder and double-fold collar. Trousers have elasticated. Delivered **5.25**

Moderately Priced

Colors Brown (as shown), Cardinal, Rose Blue.
 Sizes 2 to 5 years.
72-900 Made at a tempting price is this "EATON-MADE" suit, knit of brushed cotton and wool. It includes double-fold cap, belted sweater showing two pockets and leggings with elastic draw at waist. **3.50**

Effective Colorings

Blue with Gray only. Sizes 2, 4, 6 yrs.
72-918 Blue and gray colorings are combined in this "EATON-MADE" suit, knit of cotton and wool. Trousers have buttoned belt, buttonholes on waistband; belted sweater has two pockets, convertible collar. **4.50**

Warm

Colors Gray (as shown), Cardinal, Brown. Sizes 2 to 5 years.
72-903 "EATON-MADE" Suit. Knit of brushed cotton and wool. Double-fold cap features pom-pom, pull-over jersey buttons on shoulder, and two-ply collar and elasticated draw at waist of leggings. **3.50**



All-Wool Cloud

Colors White (as shown), Cardinal.
72-927 This soft All-wool Cloud about the neck will comfortably complete your little one's outdoor costume. It is almost 7 ins. wide and 34 ins. long, knit in-stitch tassel. Price..... **69c**



Colors Navy (as shown), Cardinal, Rose and White, Copen and White. Sizes 2, 4, 6 years.
72-910 Knitted in an attractive fancy stitch is this all wool "EATON-MADE" Pull-over sweater. White collar and pom-pom. Buttons belt and lined girdle. **3.25**



Colors Navy (as shown), Cardinal. Sizes 2, 4, 6 years.
72-920 A great comfort this heavy knitted sweater of union yarns will prove to your little one. Two pockets, lined girdle. Collar buttons neatly about neck. **3.15**



Colors Navy (as shown), Cardinal, Rose and White. Sizes 2, 4, 6 years.
72-908 Popular slip-over style sweater of union yarns. White outline-shaped neck and pom-pom. Double-fold cuffs. Close ribbed at top. **1.85**



Colors Navy (as shown), Cardinal, Rose and White, Copen and White. Sizes 2, 4, 6 years.
72-909 "EATON-MADE" Pull-over Sweater of soft ribbed All-wool has button-secured belt. White wool armlet back of collar collar and in pom-pom at V-shaped neck. **3.15**



Colors Brown (as shown), Cardinal. Sizes 2, 4, 6 years.
72-911 "EATON-MADE" Sweater Coat of union yarns. Collar is convertible, and two patch pockets are placed either side of buttoned front. Price..... **1.75**



Colors Brown (as shown), Gray or Cardinal. Sizes 2, 4, 6 years.
72-917 Inexpensive, but serviceable, knit ple blouse "EATON-MADE" Overall of union yarn. Cord draw at waistband. State size and color. Price..... **1.35**



Colors Cardinal (as shown), or Brown. Sizes 2, 4, 6 years.
72-921 Heavy Wool and Cotton Overall with pom-pom. Collar open and kept from cold. Tasselled waist cord. **1.95**



Colors Gray (as shown), Cardinal or Brown. Sizes 2, 4, 6 years.
72-922 "EATON-MADE" Overall of union yarn. Cord draw at waist. Cord all-wool waist. **2.75**



Infants' All-Wool Overalls

Colors White only. Sizes 1 and 2 years.
72-923 Knit of the All-wool are these Infant's Overalls, which have tassel cord at waist and ankle. They are warm and serviceable. State size. Price..... **1.25**
72-456 Child's white union knit of cotton wool and mercerized 2, 3 and 6 yrs. Price..... **75c**
 Colors White only. Sizes 1 and 2 years.
72-924 So easy will the we use for when knitted into these Infant's All-wool Overalls. Tasselled cord appears at ankle and waistband which has elasticated edge. State size..... **1.95**
72-453 Infant's white union knit of cotton wool and mercerized 1 and 2 years. Price..... **50c**



Brushed Wool

Colors Navy and White (as shown), Copen and White
72-925 This "EATON-MADE" knit cap is developed of brushed All-wool. Meant to stretch 5 1/2 ins. wide and 30 ins. long, but measures 11 ins. State color. Price..... **2.00**



Blanket Cloth
 Colors Burgundy (as shown), or Brown.
 Sizes 2, 3, 4, 5, 6 years.
 Lengths 20, 22, 24, 26, 27 ins.
 72-870. Child's Coat of All-wool Blanket Cloth, box points front and back, button-trimmed yoke, set-in side pockets, buttons lining throughout. **13.25**
 Price, delivered.

Blanket Velour
 Color Grey (as shown) only.
 Sizes 2, 3, 4, 5, 6 years.
 Lengths 19, 20, 22, 25, 27 ins.
 72-877. Novelty buttons, fur-like and effectively trim the Child's Coat of wool and cotton Blanket Velour. Lined with black satin, satin pockets and reversible collar. **6.75**
 Price, delivered.

An Inexpensive Coat
 Colors Red, Navy or Brown.
 Sizes 2, 3, 4, 5, 6 years.
 Lengths 20, 22, 24, 26, 28 ins.
 72-878. Exceptional value in this Child's Coat of All-wool Blanket Velour, warmly lined with striped flannel. Button-trimmed pocket flaps, belt and double-breasted front. **6.25**
 Price, delivered.

Warm, Cozy
 Colors Navy or Brown.
 Sizes 2, 3, 4, 5, 6 years.
 Lengths 20, 22, 24, 26, 28 ins.
 72-867. All-wool Blanket Cloth Coat, "EATON-MADE" Check Coat, lined throughout. Collar of reversible buckled belt; buttons trim sleeves and pockets. **10.25**
 Price, delivered.

All-wool Blanket Cloth
 Colors Taupe or Burgundy.
 Sizes 2, 3, 4, 5, 6 years.
 Lengths 20, 22, 24, 26, 28 ins.
 72-868. "EATON-MADE" Belted Coat of soft All-wool Blanket Cloth. Lined throughout with satin; novelty buttons close front and reversible collar, and trim pockets and turn-back cuffs. **10.75**
 Price, delivered.

72-878. Comfortable and warm. White cotton and wool-furry throughout. Collar, pointed collar; lined throughout with white flannel. Buttons close front. **5.25**
 Size 1, 2, 3 years. Price, delivered.



Child's Navy Coat
 Colors Navy (as shown) only.
 Sizes 2, 3, 4, 5, 6 years.
 Lengths 20, 22, 24, 26, 28 ins.
 72-871. - There is a dainty trimmy all about this All-wool Blanket Cloth Coat. Buttons close the front, and black velvet lining. "EATON-MADE" - as a girl, which is easily buttoned. **8.25**
 Price, delivered.



Becoming Coat
 Weather Mixture only.
 Sizes 2, 3, 4, 5, 6 years.
 Lengths 20, 22, 24, 26, 28 ins.
 72-869. Belted Coat of heavy weather mixture lined with a wool wearing wool and cotton fabric. Reversible collar, reversible cuffs, satin-trimmed pockets. **14.50**
 Price, delivered.



Blanket Cloth
 Colors Navy or Brown.
 Sizes 2, 3, 4, 5, 6 years.
 Lengths 20, 22, 24, 26, 28 ins.
 72-875. Double-breasted "EATON-MADE" All-wool Blanket Cloth Coat, two pockets, buckled belt, button-trimmed cuffs, satin-trimmed pockets. **10.75**
 Price, delivered.



For Cold Days
 Colors Brown or Navy.
 Sizes 2, 3, 4, 5, 6 years.
 Lengths 20, 22, 24, 26, 28 ins.
 72-874 All-wool Blanket Cloth Coat, grey flannel lined, belt, collar and pointed bow button-trimmed front. **8.50**
 Price, delivered.



A Trim Coat
 Colors Brown or Navy.
 Sizes 2, 3, 4, 5, 6 years.
 Lengths 20, 22, 24, 26, 28 ins.
 72-876. Belted style Coat of wool and cotton flannel. Lined, pockets, Warmly lined with diagonal striped flannel. Button-trimmed with novelty buttons. **10.50**
 Price, delivered.

86-350
9.50
Delivered



86-354
15.40
Delivered



86-351
3.25



For
Descriptions
and other colors
in which these
Attractive
Negligees may
be obtained
See Opposite
Page

86-356
14.85
Delivered



86-355
10.50
Delivered



86-357
6.25
Delivered



86-358
5.00
Delivered



86-252
4.50

YOU will enjoy your hours of leisure all the more if you are wearing one of these comfortable and becoming kimonos. The materials, styles and prices are so varied that you will surely find a model to suit your taste, requirements and purse, and in every instance you may be assured of receiving splendid value.

86-353
15.24
Delivered



58-654



Very Attractive Dress of Silk Crepe-de-Chine 21.00

(Illustrated Above.)
 Colors Holland Blue (as shown), with Black beads and touch of color; Navy with Black beads and touch of color; Taupe with Black beads and touch of color. Black with Black.
 Bust Size: 34, 36, 38, 40, 42, 44
 Skirt Length: 35 in., 36 in., 37 in., 38 in.

58-654 Silk Crepe-de-Chine never loses its charm. The softness and richness of this material lends itself to many and varied styles. In this case the style is simple, with bead and ornamental embroidery, while tucks appear on the gathered skirt which falls from beneath the soft tie giraffe. Cuffs and round neck are finished by self binding. Not lines the waist of this "EATON-MADE" Dress, which fastens at the shoulder and down side. State size and color. Price, delivered..... **21.00**

Smartly Fashioned All-Wool Serge Dress 16.50

(Illustrated Above.)
 Colors Navy (as shown), Brown with contrasting Brown, Black with Self.
 Bust Size: 34, 36, 38, 40, 42, 44
 Skirt Length: 35 in., 36 in., 37 in., 38 in.

58-651 Straight-line or "chemise" dresses as they are sometimes called, are in high favor, and the illustration shows how admirably All-Wool Serge lends itself to this mode. On this "EATON-MADE" Dress hand embroidery in wool and beads decorates the front panel, outlined with bottom-trimmed pleats that turn off to follow a unique line at the hip. Closing is arranged invisibly at the side of panel, and a fancy giraffe of blue silk cord that controls fullness is a decidedly decorative feature. State size and color. Price, delivered **16.50**



58-652

Graceful Model of Silk Crepe-de-Chine 30.00
 (Illustrated below) Delivered
 Colors Holland Blue, Green, Navy, Mauve and Black
58-653 Hand embroidery in black and self-colored silk floss and black beads, adorns this "fascinating" "EATON-MADE" Silk Crepe-de-Chine Dress. V-neck of Silk Georgette Crepe contributes a becoming touch of white. Panel back of bodice fastens on shoulders, and blouse softly over belt. Lace edges white cotton underbodice. Lower part of skirt is joined to black China silk foundation which is covered by tuck-trimmed tulle. See table for sizes. Price, delivered..... **30.00**

Bust Size	Skirt Length
34, 36	35 in.
38, 40	36 in.
42	38 in.

Serviceable Dress of Inexpensive Serge 9.95
 (Illustrated below) Delivered
 Colors Brown (as shown), Black with Self, Navy with Black
58-652 This Cotton and Wool Serge "EATON-MADE" one-piece dress hangs in straight lines from the shoulder. Military braid binds neck, and rows of braid on waist between two full-length pleats are topped at both ends by buttons. Similar buttons and braid trim patch pockets. Closes invisibly under left pleat. See table for sizes. Price, delivered..... **9.95**



58-650

Excellent Value In All-Wool Serge 12.75

(Illustrated Above.)
 Colors Green (as shown), Navy with Black, Black with Black.
 Bust Size: 34, 36, 38, 40, 42, 44
 Skirt Length: 35 in., 36 in., 37 in., 38 in.

58-650 Its very moderate price is the outstanding feature of this smart All-Wool Serge Dress, that is sure to appeal to the discriminating shopper. Modish tunic-style overbust shows three rows of braid on becomingly cut neckline and on lower edge, and similar trimming finishes sleeves attached to white cotton underbodies. Lower part of skirt is joined to black lining foundation. This "EATON-MADE" one-piece Dress closes on shoulder and side. It is completed by graceful tie giraffe. State size and color. Price, delivered..... **12.75**



58-653

Measure length of skirt from bottom edge of inner waistband straight down the front to length desired. Make no allowance for high waistline.



58-640

**Decidedly Modish
Satin-de-Chine 28⁰⁵**
(Illustrated Below) **Delivered**
 Colors Green (as shown), Black with Black, Navy with Holland, Taupe with Holland, Holland with Burgundy.

58-644 New in style are the buxant hip draperies so attractively arranged on this Satin-de-Chine Dress. Waist lined with white cotton, has back and front panels, and below the girle full little pinfire poppins which are embroidered in beads and silk floss. Neck is finished by rounded collar, self-covered buttons trim sleeves and waist of this "EATON-MADE" dress which fastens at shoulder and side. Price, delivered..... **28.05**

Size for 58-644	Skirt	Skirt
Bust	Waist	Skirt Length
22, 24, 26, 28, 30, 32, 34, 36, 38, 40	24, 26, 28, 30, 32, 34, 36, 38, 40	35, 36, 37, 38, 39, 40, 41, 42, 43, 44, 45, 46, 47, 48, 49, 50
Basted Hems		Basted Hems

**Distinctive Model
of All-Wool Serge 25⁰⁰**
(Illustrated Below) **Delivered**
 Colors Navy (as shown), Black

58-641 This handsome "EATON-MADE" Dress of fine quality All-Wool Serge, is cut on modest long lines, and smartly trimmed with black embroidery. Self collar extends to square neckline showing closely set buttons like those on sleeves. Has tanned girle of black fine silk cord at waistline, white cotton underbody and invisible side and shoulder closing. Price, delivered..... **25.00**



58-642

58-643

**Desirable Dress
of All-Wool Serge 13⁰⁰**
(Illustrated Above) **Delivered**
 Colors Navy (as shown), Brown, Black

Bust Size	Skirt Length
22, 24, 26, 28, 30, 32, 34, 36, 38, 40	35, 36, 37, 38, 39, 40, 41, 42, 43, 44, 45, 46, 47, 48, 49, 50
Basted Hems	

58-640 Notably good value is this Dress that will find a welcome place in a woman's wardrobe, for it is made of the ever-popular All-Wool Serge, and its long waist and outstanding pockets, that give it the distended hip effect, mark it as a very smart model. Self-colored embroidery trims front and the afore-mentioned pockets, while two buckles adorn narrow belt. Buttons appear on cuffs, and a larger size extend from neck to hip depth on full-length pleat at back. Invisible side and shoulder closing completes this "EATON-MADE" model. State size and color. Price, delivered... **13.00**

Measure length of skirt from bottom edge of inner waistband straight down the front to length desired. Make no allowance for high waistline.

**Very Smartly Designed Dress
of All-Wool Jersey Cloth 25⁵⁰**
(Illustrated Above) **Delivered**
 Colors Roskie (as shown), Navy with Black and Contrasting, Pekin with Self and Contrasting, Taupe with Self and Contrasting, Black, with Black

Bust Size	Skirt Length
22, 24, 26, 28, 30, 32, 34, 36, 38, 40, 42, 44	35, 36, 37, 38, 39, 40, 41, 42, 43, 44, 45, 46, 47, 48, 49, 50
Basted Hems	

58-642 La Mode sponsors the smart style of this delightful One-piece Dress of fine All-Wool Jersey Cloth. A clever design in embroidery encircles the rounded neckline and bottom of the graceful over-blouse which is softly gathered beneath the fashionably narrow girle. Well cut sleeves showing fancy smoked pearl buttons at wrist are attached to a cotton underbody. This in turn is joined to a durable cotton lining which composes part of skirt beneath tulle of this "EATON-MADE" dress that fastens at side. State size and color. Price, delivered..... **25.50**

**Pretty Dress of Messaline Silk
Very Invitingly Priced 20⁶⁰**
(Illustrated Above) **Delivered**
 Colors Navy (as shown), Brown with Contrasting trimmings, Green with Contrasting trimmings, Black with Black trimmings

Bust Size	Skirt Length
24, 26, 28, 30, 32, 34, 36, 38, 40, 42, 44	35, 36, 37, 38, 39, 40, 41, 42, 43, 44, 45, 46, 47, 48, 49, 50
Basted Hems	

58-643 Soft, shimmering Messaline Silk develops this "EATON-MADE" model whose smartly simple style and effective trimmings make it a dress you will wear with great pleasure. The bodice, mounted over lace-edged white cotton underbody, is adorned with embroidered motifs and beads arranged in sun ray effect. Self-covered buttons appear on side pleat, while silk collar falls partly over shoulder closing. Skirt, slightly gathered, joins waist beneath all-round belt. State size and color. Price, delivered..... **20.60**

All-Wool Serge 22.00
Delivered

(Illustrated Below)

Colors Navy (as shown), All Black

Bust Size	Skirt Length
32, 34	35 in.
36, 38	36 in.
40, 42	38 in.

Basted Hems.

58-630 The good quality of the All-Wool serge, the long straight lines, and the fashionable trimmings are all factors in making this dress so desirable. Military braid trims collar that is square at back, and long sleeves, and in a wider width forms six rows on the skirt. Buttons appear below V-neck in front, and run down centre of back. This "EATON-MADE" Dress that has white cotton underbodice, closes invisibly on shoulder and side, and waistline is marked with wash belt finished with tuovels. State size and color. delivered 22.00



Fine Silk Crepe-de-Chine 22.55
Delivered

(Illustrated Below)

Colors Burgundy (as shown), Navy with Sand, Holland Blue with Sand, Black with White.

Bust Size	Skirt Length
32, 34	35 in.
36, 38	36 in.
40	38 in.

Basted Hems.

58-633 This Silk Crepe-de-Chine Dress is the type of frock that proves immensely useful, as it is appropriate for both afternoon and evening. Modish little apron effects outlined with hemstitching appear at back and front of gathered skirt. Becoming waist, trimmed with self-covered buttons between groups of fine tanks closes invisibly at side front, and is mounted over firm black net. Contrasting Gossamer Crepe forms collar, and laid in folds is the belt of this "EATON-MADE" one-piece model. State size and color. Price, delivered... 22.55



58-634

Messaline Silk Dress 27.23
Delivered

(Illustrated Above)

Colors Brown (as shown), Navy with Self and Gilt, Holland Blue with Self and Gilt, Black with Self.

Bust Size	Skirt Length
32, 34	35 in.
36, 38	36 in.
40	38 in.

Basted Hems.

58-634 Attractive indeed is this Messaline Silk Dress, quite singled out from the ordinary by the unique style of the full skirt. On it three up-standing folds caught with self-covered buttons are skillfully arranged to indicate the modish flared hips. The bodice, too, calls for admiring comment, for its vest that closes at side boasts hand embroidery, and the tucked and hemstitched collar is of Silk Gossamer Crepe in contrasting shade, white being used on black dress. White cotton underbodice is a serviceable feature of this "EATON-MADE" Dress consisting by soft wide girde. State size and color. Price, delivered 27.23



This All-Wool Serge only 12.50
Delivered

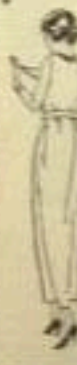
(Illustrated Above)

Colors Burgundy (as shown), Black with White, Navy with Wine.

Bust Size	Skirt Length
32, 34	35 in.
36, 38	36 in.
40	38 in.

Basted Hems.

58-631 Braid and buttons produce effective touches on this inexpensive "EATON-MADE" Dress of an All-Wool Serge. They are arranged as illustrated at the Y-shaped neck, sleeves, and inset pockets. Neck and pockets also have pipings of contrasting colored silk which is a decidedly pleasing note. The fashionable narrow belt as well as the dress, fastens at the side. You will find a becoming one-piece frock of this order a real comfort on cool days in all seasons. State size and color. Price, delivered... 12.50



Measure length of skirt from bottom edge of inner waistband straight down the front to length desired. Make no allowance for high waists.

Trim Union Serge Model 10.50
Delivered

(Illustrated Above)

Colors Navy (as shown), Brown with Self, Black with Self

Bust Size	Skirt Length
32, 34	35 in.
36, 38	36 in.
40	38 in.

Basted Hems.

58-632 There's a great demand for dresses of Union Serge, as this fabric wears well and is so moderately priced. On this "EATON-MADE" Dress of cotton and wool mixture the bodice front is made interesting by numerous tiny tucks and two wide button-trimmed plaits, beneath one of which hooks and eyes effect the closing. Silk floss in darning stitch outlines round neck, while neat belt covers joining of waist to slightly gathered skirt which displays self-covered buttons above opening of the inset pockets. The low price of this dress should make it a popular choice. State size and color. Price, delivered... 10.50



58-633

All-wool Serge 12⁷⁵
In Pretty Style Delivered

(Illustrated below)

Colors Navy (as shown), Brown or Black.

Bust Size	Skirt Lengths
32, 34	35 ins.
36, 38	36 ins.
40, 42	38 ins.

Basted Hems.

58-620 A remarkably good value, as well as smart and durable, is this One-piece "EATON-MADE" Dress of All-wool Serge.



Tunic bodice made with shoulder and side closing has narrow slash grille that twice encircles waist, while self-colored embroidery in chain and solid strip decorates neck and bottom edge. Sleeves attached to white cotton underbodice are trimmed with buttons like those on back of waist. Lower portion of skirt is joined to black lining over which the tunic falls. State size and color. **Delivered . 12.75**



A Modish Dress 20⁵⁰
All-wool Serge Delivered

(Illustrated below)

Colors Brown (as shown), Black with Self, Navy with Black.

Bust Size	Skirt Lengths
34, 36	35 ins.
38, 40	36 ins.
42, 44	38 ins.

Basted Hems.

58-621 The influence of the Russian overblouse is noticed in this smart One-piece Tunic Dress of splendid quality All-wool Serge. Self-colored stitching curves into an attractive ornamentation around neck, armholes and bottom of tunic, which is further trimmed down the centre of back with buttons similar to those on sleeves. Tunic fastens at the shoulder and white cotton lining bolice of the "EATON-MADE" Dress fashioned in a very popular style. Give size and color. **Delivered . 20.50**



58-620

All-wool Serge 16⁵⁰
On Slender Lines Delivered

(Illustrated above)

Colors Green (as shown), Navy with Beads and Red Embroidery, Black, All Black.

Bust Size	Skirt Lengths
34, 36	35 ins.
38, 40	36 ins.
42, 44	38 ins.

58-622 Such a useful, becoming Frock will you find this straight line model of All-wool Serge that features an unusually interesting full length panel. On this panel, beads and fins are employed for the de't touch of hand embroidery, tucks appear above waistline and hem, while buttons are noted on extensions at sides. Broad blade curved neckline and button-trimmed cuffs of this "EATON-MADE" Dress that has an invisible side closing, and is completed by the grille. State size and color. Price, **delivered . 16.50**



Practical Dress 24⁷⁵
of Messaline Silk Delivered

(Illustrated above)

Colors Navy (as shown), Brown, Capen, Green.

Bust Size	Skirt Lengths
32, 34	35 ins.
36, 38	36 ins.

Basted Hems.

58-624 Little frills and small self-covered buttons assume the responsibility for trimming this moderately-priced Dress of Messaline Silk. The frills appear on the collar, the button-trimmed sleeves and on vest that closes invisibly at side, and is outlined by pleats also adorned with buttons. The white cotton underbodice is an appreciated detail of the waist that is joined to slightly full skirt beneath folded grille made interesting at back by butterfly bow. Price, **delivered . 24.75**



Measure length of skirt from bottom edge of inner waistband straight down the front to length desired. Make no allowance for high waistline.

Taffeta Silk in 29¹⁵
Attractive Style Delivered

(Illustrated above)

Colors Plum (as shown), Navy, Brown, Black.

Bust Size	Skirt Lengths
34, 36	35 ins.
38, 40	36 ins.
42, 44	38 ins.

Basted Hems.

58-623 Taffeta Silk, one of the most fashionable fabrics, composes and trims this becoming One-piece Dress that is "EATON-MADE". Self loops, a new style note, and silk-covered buttons appear on the front of gathered skirt and useful pockets. Back of skirt features two tucks like those on back and front of the bodice that has white cotton foundation. White silk collar, button-trimmed shoulder tabs beneath one of which waist closes, and a belt with buttons and beaded slashes are all points of interest. State size and color. Price, **delivered . 29.15**



58-623



58-613



58-611



58-612



58-610



58-614

Pretty and Inexpensive **11.00**
 Delivered
 (Illustrated below)
Colors Navy (as shown), All Black.
 Bust Sizes Skirt Lengths
 32, 34 35 ins.
 36, 38 36 ins.
 40, 42 38 ins.
58-610 Low in its price, serviceable in its fabric, and pleasing in its style is this "EATON-MADE" frock of Cotton and Wool Serge. Hand embroidery in sketchy design embellishes vest that closes broadly at side. The long roll collar continues below the waistline, forming wide tabs trimmed with black buttons like those on sleeves. Larger buttons are also used on side of folded belt that covers joining of the waist to the skirt, which has gathered back. Price, delivered **11.00**



Silk-faced Poplin Dress **15.00**
 Delivered
 (Illustrated above)
Colors Green (as shown), Navy with Black and Metallic Thread, Brown with Contrasting Brown, All Black.
 Bust Sizes Skirt Lengths
 32, 34 35 ins.
 36, 38 36 ins.
 40 38 ins.
 Basted Hems

58-613 Pleating of all kinds is very much in vogue, and on this "EATON-MADE" Dress fashioned of Silk-faced Poplin you will observe that knife pleating outlines becoming round neck and finishes sleeves. Further trimming is provided by silk flow embroidery on side belt, and by the self-covered buttons on side pleat of bodice beneath which closing is arranged. The softly gathered skirt of this one-piece dress has upper portion joined to lower part beneath tuck, thereby producing yoke effect. State size and color. Price, delivered... **15.00**



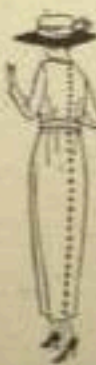
Trimmed Very Effectively **21.50**
 Delivered
 (Illustrated above)
Colors Brown (as shown), Black, Navy, Green
 Bust Sizes Skirt Lengths
 34, 36 35 ins.
 38, 40 36 ins.
 42, 44 38 ins.
 Basted Hems.

58-611 You will find this stylish dress of Silk-faced Poplin immensely satisfactory, for this popular material will wear well, and the hand embroidery carried out in black beads and harmonizing chenille on bodice front, will appeal to your sense of beauty. Self-covered buttons trim shoulders and sleeves and on the full skirt they extend down sides of yoke effect. Square neck is piped with silk, and a lace-edged white cotton underbodice completes this "EATON-MADE" dress that has side and shoulder closing. State size and color. Price, delivered... **21.50**



In All-Wool Jersey Cloth **19.75**
 Delivered
 (Illustrated above)
Colors Pekin Blue (as shown), Roskie (Tannish Brown), Dark Brown, French Blue.
 Bust Sizes Skirt Lengths
 32, 34 35 ins.
 36, 38 36 ins.
 40 38 ins.
 Basted Hems.

58-612 Fashionable All-Wool Jersey Cloth composes this graceful "EATON-MADE" frock, whose modish chemise lines remind one that dresses hanging straight from the shoulder are particularly comfortable and healthful. Embroidery in three silk braid and chain stitching trims neck and forms unique garniture on skirt front, while self-covered buttons extend up back of skirt and appear on sleeves attached to white cotton underbodice. Closing is arranged on shoulder and side, and waist is cinched by the girde. State size and color. Price, delivered... **19.75**



An Excellent Value in a Modish Dress **11.00**
 Delivered
 (Illustrated above)
Colors Navy (as shown), All Black
 Bust Sizes Skirt Lengths
 32, 34 35 ins.
 36, 38 37 ins.
 40 38 ins.

58-614 Smartly simple is this Dress of Cotton and Wool Serge, which carries out to the letter La Mode's dictates that long slender lines should be given prominence in this season's styles. Full length front panel is outlined with plaits, and is trimmed as illustrated with two groups of tucks and hand embroidery in wool and silk flow. Braid is used to trim the neck line of this "EATON-MADE" Dress, that closes invisibly at side of panel and is completed by tasseled three silk cord girdle. Its very moderate price is indeed worth noting, making this a dress that will be deservedly popular. State size and color. Price, delivered... **11.00**



We advise you to place your order early, in order to insure a good selection.
 Measure length of skirt from bottom edge of inner waistband, straight down the front to length desired. Make no allowance for high waistline.

All-Wool Blanket Velour 19⁷⁵—
Delivered

Illustrated below
Colors Navy (as shown), Navy, Burgundy or Taupe.

Junior Misses' Size	Bust	Length
13	31	43 in.
15	33	43 in.
17	35	44 in.
19	37	44 in.

84-281 All-wool Blanket Velour has such a soft, attractive appearance that it is often used for just such a becoming Coat as this for Junior Misses. The comfortable convertible collar may be worn open or closed as the weather dictates. Inset pockets have buttoned tops below which two rows of fine tucking extend. A neatly shaped buckle is slipped through belt at centre of back; the belt closes at front with two buttons to match the smaller ones on the attached cuffs. Satin in sleeves and to waist depth lines this "EATON-MADE" coat.
Delivered... 19.75



84-283

84-280

84-284

84-282

Fine All-Wool Silvertone 30⁰⁰—
Delivered

Colors Navy (as shown), Marine Brown, Taupe or Burgundy.

Junior Misses' Size	Bust	Length
13	31	43 in.
15	33	43 in.
17	35	44 in.
19	37	44 in.

84-283 The popular All-wool Silvertone Velour is a particularly happy choice for this stylish coat. The back with its straight hanging fullness and novelty buttons is very swapper, and the front is equally smart. It is cleverly cut, and has inset pockets emphasized by the two pointed bottom-tucked tabs, stitched cuffs display smaller buttons, and rounded convertible collar fastens with larger buttons. A narrow belt encircles the waist, buttoning at front of this "EATON-MADE" model lined throughout with satin.
Price.
Delivered... 30.00



84-281

When ordering be sure to state size and color desired. Order coat of same size as you would a dress to assure correct fit.

Junior Misses' Cheviot Coat 16⁷⁵—
Delivered

Colors Burgundy (as shown), Brown, Navy, Green or Black.

Junior Misses' Size	Bust	Length
13	31	43 in.
15	33	43 in.
17	35	44 in.
19	37	44 in.

84-280 Here is a Junior Misses' smart inexpensive Coat of Wool and Cotton Cheviot with a soft Blanket Velour. Collar is quite unusual in cut and may be worn open or buttoned to fit snugly beneath the chin. The stitched pointed cuffs are caught with a single button, while numerous small ones are noted on shaped turn-back pieces on inset pockets. A row of larger buttons is arranged at side, and smaller ones trim back of belt with buttoned-on front section. A lining in sleeves and to waist of satin completes this warm "EATON-MADE" coat which is splendid value.
Price.
Delivered... 13.75



Of Fashionable All-Wool Velour 27⁵⁰—
Delivered

Colors Green (as shown), Navy, Brown, Taupe or Burgundy.

Junior Misses' Size	Bust	Length
13	31	43 in.
15	33	43 in.
17	35	44 in.
19	37	44 in.

84-284 There's a trim smartness about the back of this Winter Coat of the fashionable All-wool Velour. It shows novelty buttons at either side of the tiny tucks on panel, while below waistline it falls in soft pleats. Very original are the large tucked, button-ornamented pockets which add to the stylish effect of the front. Tucks follow the outlines of the jaunty convertible collar, while turn-back cuffs have points showing buttons, with larger ones on the madly narrow belt. A lining throughout of satin is another very satisfying feature of this fashionable coat.
Price.
Delivered... 27.50



All-Wool Blanket Velour 20⁷⁵—
Delivered

Colors Navy (as shown), Brown, Burgundy or Taupe.

Junior Misses' Size	Bust	Length
13	31	43 in.
15	33	43 in.
17	35	44 in.
19	37	44 in.

84-282 Being fully fashioned of Heavy All-wool Blanket Velour this becoming Coat is bound to be warm and serviceable, and its trimmings of tucks and buttons vouch for its modishness. Fine tucks ending in tiny buttons first appear on convertible collar which may be worn open if preferred. They are also used on sleeves and have an equally pleasing effect on shaped pleats on lower part of patch pockets. Narrow tucked belt which controls the straight hanging fullness, shows two buttons at back and a black buckle where it fastens at side front. Lined throughout with satin.
Price.
Delivered... 20.75





84-270



84-271



84-272



84-273

* Table of Size for These Coats.

Misses' Sizes	Bust	Length
14	32	45 in.
16	34	47 in.
18	36	49 in.
20	38	51 in.

To assure correct fit order the same size as you would a dress.

Of Warm All-Wool Blanket Velour 20.00

Colors Brown (as shown), Navy, Taupe, Burgundy or Black. See table above for sizes.

84-270 Its softness and warmth make All-wool Blanket Velour a general favorite for the fashioning of attractive winter coats. It adapts itself splendidly to the straight well-cut lines of this Misses' "EATON-MADE" model shown in above illustration, which to ensure greater comfort is lined in sleeves and to hip depth with satin. A rounded convertible collar, that may also be worn open to form revers, will be the source of much comfort. Note the shaped pieces on stitched cuffs, marked by a button. All-around belt closes with large buttons. Two-tier pockets displaying buttons on each section are a smart and convenient feature of this moderately priced coat. State size and color. Price, delivered... 20.00

Fashionable All-Wool Blanket Velour Coat 24.50

Colors Navy (as shown), Brown, Taupe, Burgundy or Black. See table above for sizes.

84-271 The smart extended hip line is exploited very cleverly on this Misses' modish Coat of a splendid quality All-wool Blanket Velour. A pin-tucked, button-trimmed panel is inset at sides and forms the pockets, which are buttoned to give fullness at hips. Pin tucks provide an effective trimming on the convertible collar which closes like front with novelty buttons. They also appear on sleeves and are uniquely arranged with three smaller buttons. The belt, which is cut in four pieces, has buttons at back and buttoned-on section at front. This attractive model warmly lined throughout with satin bears the "EATON-MADE" label, which assures you of careful making and dependability. State size and color. Price, delivered... 24.50

Misses' Warm Coat, Smart and Practical 23.50

Colors Burgundy (as shown), Brown, Navy or Grey. See table above for sizes.

84-272 Stylish and very comfortable is this Misses' serviceable Coat of good-wearing Whitney Chinchilla, a wool material woven with a very small percentage of cotton. Convertible collar which is shown worn open is just as becoming when buttoned snugly beneath the chin. A button shows where sections of stitched cuffs cross one another on the roomy Raglan sleeves. Capacious pockets are tucked and show the result of clever designing in their unusual outline. Rows of tucks extend across back below the button-trimmed belt and are met at sides by attractive buttons. The desirable "EATON-MADE" coat, to complete its good features, is lined in sleeves and to hip depth with satin. State size and color. Price, delivered... 23.50

Inexpensive Coat in a Modish Style 18.50

Colors Green (as shown), Navy, Burgundy, Brown or Black. See table above for sizes.

84-273 Splendid value is represented in this "EATON-MADE" Coat of Wool and Cotton Cheviot with a soft blanket finish. It is a model that should be deservedly popular. Buttons form an important part of the trimming and along with narrow tucks prove most decorative. Together they appear on the panel-like pocket flaps, convertible collar and front and back straps of the all-around four-piece belt. Buttons also close the front and are used on the stitched cuffs. Firm satin lines the sleeves and to waist depth, and adds to the service and comfort of this coat, here offered at a most attractive price. State size and color when sending in your order. Price, delivered... 18.50



84-242

84-240

84-241

84-243

Gracefully Developed of All-Wool Velour 31⁵⁰
Delivered

Colors Burgundy (as shown), Navy, Dark Brown, Taupe or Black.

Misses' sizes	Bust	Lengths
14	32	45 ins.
16	34	45 ins.
18	36	46 ins.
20	38	46 ins.

84-242 Soft All-wool Velour stands for comfort in this Misses' smart model and the back being pleated leaves no doubt as to its modishness. Embroidered arrow heads show where stitching is discontinued in two middle pleats. Novelty buttons applied to turn-back pieces interspersed by attaching mark centre of all-round belt. Stitching and similar buttons again do duty on the shaped set-in pockets which are a useful, attractive feature of the front. Collar is convertible so may be worn open or closed on this "EATON-MADE" model lined throughout with satin. Pointed turn-back cuffs trimmed with a button are noted on sleeve. State size and color. Price, delivered..... 31.50



Misses' New Style Polo Cloth Model 37⁵⁰
Delivered

Colors Tan (as shown), Light Brown or Pekin Blue.

Misses' sizes	Bust	Lengths
14	32	44 ins.
16	34	44 ins.
18	36	45 ins.
20	38	45 ins.

84-240 Smart in style is the Misses' and here shown in Polo Cloth, a soft, heavy blanket-finish All-wool Coating. A decidedly fashionable note is introduced in this "EATON-MADE" model by the large pockets with their buttoned flaps. Collar is convertible, and raglan sleeves, which are one of the new style features of the season, and its deep button-trimmed stitched cuffs. The back features the modish long straight line, the all-round belt emerging from side and closing at front, though it may be worn snatching back if desired. Four tiny turks and arrow heads are arranged on upper part, while below two rows of attractive buttons are displayed. A lining throughout of fancy satin provides extra warmth. Price, delivered..... 37.50



in Modish All-Wool Silvertone Velour 37⁵⁰
Delivered

Colors French Blue (as shown), Reindeer Brown, Navy or Taupe.

Misses' sizes	Bust	Lengths
14	32	45 ins.
16	34	45 ins.
18	36	46 ins.
20	38	46 ins.

84-241 This stylish Coat is most fittingly developed of that fashionable material, All-wool Silvertone Velour which gains its beeked appearance by an interwoven thread of blue silk. Convertible collar crosses at front and closes with hand-operated buttons or when left open displays its generous rounded lines. Two rows of stitching and buttons trim turn-back cuffs and these trimmings have a charming effect on the panels at side which boast of inset pockets. The back of this Misses' "EATON-MADE" model displays stitching that continues slightly below the belt. Embellished with embroidered arrow heads. Comfortably lined throughout with fancy satin. State size and color. Price, delivered..... 37.50



Stylish, Warm Coat of All-Wool Velour 27⁵⁰
Delivered

Colors Brown (as shown), Navy, Burgundy, Taupe or Black.

Misses' sizes	Bust	Lengths
14	32	45 ins.
16	34	45 ins.
18	36	46 ins.
20	38	46 ins.

84-243 The charm of careful workmanship pervades this Misses' attractive warm Coat of All-wool Velour which is and wears so well. Back falls pleats below modestly narrow belt, the outer ones being a pleated by a row of novel buttons. Convertible collar double effect fastens by means a button and elastic loop and upper section marked by button. Pockets with smartly cut openings show buttons and stitching and are inserted beneath pleated stitched part way. Small novelty buttons are used, stitched cuffs. This "EATON-MADE" model is warmly lined throughout with satin, and very special value. State size and color. Price, delivered..... 27.50



Misses' and Juniors' Coats

Exemplifying the Newest Materials, skilled workmanship in their well-tailored lines, and each an exceedingly good value.



84-230

Attractive Coat of All-Wool Velour **35⁰⁰**

Colors Green (as shown), Navy, Taupe, Dark Brown or Burgundy

Misses' Size	Bust	Length
14	32	44 in.
16	34	44 in.
18	36	45 in.
20	38	45 in.

84-230 Comfort and smartness are the pleasing characteristics of this very stylish and youthful Coat of heavy All-Wool Velour. It has a becoming tuck convertible collar which assures coziness, and may be worn open when desired. Tucks surrounding a button are uniquely arranged on the well-cut sleeves. Pockets showing a button on each of their three shaped sections are very smart and give the fashionable emphasis over the hips. An all-round belt, visible only at front, leaves the button and tuck-trimmed back free to fall in soft rippling folds, but can be worn all-round the back if desired. Fancy satin provides a warm attractive lining throughout for this appealing "EATON - MADE" model. Price, delivered..... **35.00**



84-233

Youthful, Becoming, Skillfully Fashioned **40⁰⁰**

Colors Navy (as shown), Taupe or Reindeer Brown

Misses' Size	Bust	Length
14	32	45 in.
16	34	45 in.
18	36	45 in.
20	38	45 in.

84-233 It would seem that All-Wool Silvertone Velour with its fibre silk back is more popular than ever, for it is responsible for many of this season's modish coats. It is used to splendid advantage in this very attractive "EATON-MADE" model which is warmly and tastefully lined throughout with fancy satin. Tiny tucks and embroidered arrow heads are arranged on the graceful convertible collar which fastens with novelty buttons and loops of the material. Similar trimming is used on deep turn-back cuffs, while inset pockets are made distinctive by stitching and buttons. The small illustration shows the very skillful way the stitching and buttons are encased at the back, which is crossed by belt that buttons at front. Price, delivered..... **40.00**



84-231

Of Warm All-Wool Bolivia Cloth **47⁵⁰**

Colors Reindeer (as shown), Taupe or Brown

Misses' Size	Bust	Length
14	32	45 in.
16	34	45 in.
18	36	45 in.
20	38	45 in.

84-231 Winter days demand protection from the cold, and a fashionable coat beautifully soft and warm like this one serves the purpose admirably. The material selected is a fashionable Silver Tip Bolivia Cloth, which has a fibre silk back on the surface, with a fine nap resembling chamois. Large good-looking buttons appear on the cuffs, front, down sides and on the smart-cut back between the rows of tucks which end in arrowheads. The collar, when closed, fits snugly around the neck, or when open shows how attractively it is cut. This "EATON-MADE" model is interlined to waist and in sleeves for extra comfort, and lined throughout with attractive fancy satin. You will find this coat a valued addition to your wardrobe. Price, delivered..... **47.50**



84-232

All-Wool Velour in a Smart Style **40⁰⁰**

Colors Burgundy, Navy, Brown or Taupe

Misses' Size	Bust	Length
14	32	44 in.
16	34	44 in.
18	36	44 in.
20	38	45 in.

84-232 The graceful rippling back is a very interesting feature of this misses' smart model of heavy All-Wool Velour. It is trimmed, as shown in large illustration, on either side by handsome buttons extending from yoke to where pleats commence. Inset pockets gain prominence by turn-back tops trimmed with buttons and stitching ending in arrow heads. The same treatment is equally effective on the large convertible collar, and stitching and arrow heads appear alone on turn-back cuffs. An all-round belt emerges from openings at sides, and is visible only in front, but may be worn encircling the back of this modish "EATON - MADE" coat, if desired, warmly lined throughout with fancy satin. State size and color desired when sending in your order. Price, delivered..... **40.00**



Fascinating All-Wool Silvertone **42.50**

Colors Wine (as shown), or Brown.
Bust size 34, 36, 38, 40, 42, 44, 46.
Length 45 in.

82-605 Designed in the graceful wrap effect fashion like as well is this belted Coat of delightfully soft All-wool Silvertone with a thread of Blue silk. Rows of saddle stitching appear on convertible collar and on button-trimmed cuff of raglan sleeves. Similar stitching terminated by embroidered arrows extends from button-trimmed pocket top and from beneath yoke on rippling back. This "EATON-MADE" Coat generously cut on full, roomy, handsome lines, is lined throughout with fancy saten showing unusually pleasing pattern. State size and color. Price, delivered, 42.50



All-Wool Velour in Loose Back Style **35.00**

Colors Green (as shown), or Navy Blue.
Bust size 34, 36, 38, 40.
Length 45 in.

82-420 Extremely popular this season is the wrap-like coat with loose back, and this "EATON-MADE" model of soft All-wool Velour illustrates how really attractive it is. Belt shown in front passes under back which is designed as small loop shows with pin tucked pants outlined by pleats that are trimmed with self-covered buttons. Roomy sleeves cut in one with back show button-trimmed turn-back finish on deep cuffs. The convertible collar is generous in size. Pockets with buttoned tops are set into sides of the coat, which, to complete its many good features, is lined throughout with fancy figured saten. State size and color. Price, delivered, 35.00



Fall and Winter Coat of Unusual Smartness **30.00**

Colors Brown (as shown), or Navy Blue.
Bust size 34, 36, 38, 40, 42, 44, 46. Length 45 in.

82-701 This out-of-the-ordinary Coat of a beautifully soft finished All-wool Velour achieves distinction by several means. It has a stole-shaped collar that may be worn high or low, attached button-trimmed folds on pockets, deep set sleeves, novel cuffs, panel at back, crossed by three straps caught beneath pleats that boast handsome buttons and belted front. Splendid wearing saten lines this "EATON-MADE" model throughout. A coat of desirable style and attractive value, it will appeal strongly to many of our customers. Price, delivered, 30.00



Stylish, Warm Coat of All-Wool Velour **39.00**

Colors Navy Blue (as shown), or Black.
Bust size 34, 36, 38, 40, 42, 44, 46. Length 45 in.

82-606 Especially well adapted to a smart style of this Coat is a wool Velour that has soft fin and wears splendidly. Popular cord tucking allows pointed outline on sides as together with buttons, trim and unique convertible collar Cord tuck ending in arrows also noted at sides of the hip and front pleats that start yoke depth, are trimmed w large buttons, and in front openings of pockets. Lined throughout with saten show an effective colored pattern, this "EATON-MADE" model is completed by all-rou belt. State size and color. Price, delivered, 39.00



*Pretty Dresses
Specially Designed
for Girls from 6 to 14
years of age*

See descriptions on Page 137.



88-361
7.95
Delivered

88-364
6.95
Delivered

88-363
8.95
Delivered

88-365
8.50
Delivered

88-360
12.00
Delivered

88-367
16.00
Delivered

88-368
7.25
Delivered

88-368
11.55
Delivered

88-369
11.75
Delivered

88-366
8.00
Delivered

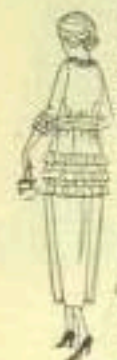
88-362
14.50
Delivered

Junior Misses' 22.00
Dainty Frock

Delivered
(Illustrated below)
Colors Holland Blue (as shown), Navy, Brown, Flash, Ivory or Black.

Size	Bust	Full Length Down Back
15	31	45 in.
17	33	46 in.
19	35	47 in.

84-783 The Silk Crepe-de-Chine used in this pretty Dress is a rich-looking, heavy quality. Narrow frills finish three-quarter sleeves, and wider ones give the bouffant effect to the hips continuing around to back of a slightly gathered skirt. Organdy medallions form a pretty collar for the round neck, and hand embroidery is introduced on soft crushed giraffe. Waist is lined with white cotton, and fastens invisibly at side. Price, delivered, 22.00



84-780

84-782

84-781

84-784



84-783

Smart Dress of 14.50
All-Wool Serge

Delivered
Colors Brown (as shown), Navy, Burgundy or Black.

Size	Bust	Full Length Down Back
15	31	44 in.
17	33	45 in.
19	35	46 in.

84-780 The front of this Junior Misses' One-piece Dress of fine All-Wool Serge is styled to be braided in a very smart way. The back, not to be outdone, shows shiny buttons extending part way on stitched pleat. Just below the narrow tie belt two button-trimmed pockets are set in, giving the fashionable widened hipline. This long-waisted "EATON-MADE" model which fastens invisibly at the back, represents splendid value. Finished with deep bustled hems to allow for easily altering length. State size and color. Delivered, 14.50



All-Wool Jersey 15.50
Cloth Dress

Delivered
Colors Fawn Blue (as shown), Rockie Brown or Taupe.

Size	Bust	Full Length Down Back
15	31	44 in.
17	33	45 in.
19	35	46 in.

84-782 Fashionable Wool Dresses on the whole retain the slender line, and this All-Wool Jersey Cloth Dress for the Junior Miss adopts this style. Pin tucks enclose self-covered buttons on front, similar buttons appear on tucked sleeves and back, while the tucks alone are used on skirt. Narrow giraffe is run through openings in front going all around the back and loops in front as illustrated. Braiding forms all-over pattern on collar of this "EATON-MADE" dress that fastens invisibly at side. Finished with deep bustled hems. State size, color. Delivered, 15.50



Pretty Dress for 16.75
Junior Misses

Delivered
Colors Navy (as shown), Brown or Black.

Size	Bust	Full Length Down Back
15	31	44 in.
17	33	45 in.
19	35	46 in.

84-781 To preserve the youthful style and yet follow closely in Fashion's footsteps is the aim of this sturdy All-Wool Serge Dress. The novelty buttons are arranged effectively across square neck and on sleeves. A panel of embroidery and stitching worked out in an artistic design extends down one side of this smart "EATON-MADE" Dress. Narrow giraffe ties at back, while the dress itself fastens at side. A useful pocket is inset on the right side of the slightly-gathered skirt which is finished with deep bustled hems. State size and color. Price delivered, 16.75



Made of Crisp 26.00
Taffeta Silk

Delivered
Colors Navy (as shown), Helleb Brown, Taupe or Black.

Size	Bust	Full Length Down Back
15	31	45 in.
17	33	46 in.
19	35	47 in.

84-784 Taffeta Silk is very much to the fore this season, and it fashions this crisp Dress for the Junior Miss. The modish tassel style is used for waist, and it is effectively embroidered on the round neck, which shows an artistic motif in front. Press frills edge the queen rounded hip panels and also the attractive cuffs of the sleeves which are attached to a cotton lining. The dress has slightly gathered skirt and fastens invisibly at the side. Finished with deep bustled hems to allow alteration in length. State size and color. Delivered, 26.00





Misses' Smart Dress of All-wool Jersey Cloth 18⁷⁵

Delivered

Size	Bust	Length Down Back
14	32	46 ins.
16	34	47 ins.
18	36	48 ins.
20	38	49 ins.

Colors Rookie Brown (as shown), Taupe or Joffre Blue
Basted Hems



84-771 Graceful of style is this All-Wool Jersey Cloth Dress which is marked at so moderate a price. Three rows of pin tucking trim the sleeves, while the bottom of skirt boasts of six. In diamond shape they also emphasize the inset pockets which effect the fashionable distended hipline. Small self-covered buttons trim back of the girle, and U-shape panels outlined with pin tucks which extends from rounded neckline. This Misses' "EATON-MADE" dress fastens beneath tuck at side. State size and color. Price, delivered..... **18.75**

Of Fine All-wool Botany Jersey Cloth 22⁵⁰

Delivered

Size	Bust	Length Down Back
14	32	46 ins.
16	34	47 ins.
18	36	48 ins.
20	38	49 ins.

Colors Pekin Blue (as shown), Rookie Brown or Taupe
Basted Hems



84-770 All-Wool Jersey Cloth has a happy way of adapting itself to a diversity of moods, and in an exceptionally nice quality is responsible for this smart dress. A very effective design in contrasting fibers silk embroidery is shown at front of V-shaped neck and lower edge of the graceful overblouse. A narrow girle with each end encircles the waist, and self-covered buttons trim sleeves at wrist. Underbodice of fine cotton, and part of skirt beneath train is of cotton on this Misses' one-piece "EATON-MADE" dress that has invisible side closing. State size and color. Delivered..... **22.50**

Splendid Value is this All-wool Serge Dress 15⁰⁰

Delivered

Size	Bust	Length Down Back
14	32	46 ins.
16	34	47 ins.
18	36	48 ins.
20	38	49 ins.

Colors Burgundy (as shown), Navy, Brown or Black
Basted Hems



84-772 Appealing in its simplicity is this Misses' One-piece Dress of a lovely soft quality of All-Wool Serge. The graceful embroidered design has an interesting way of appearing at back and front of bodice which fastens in-bully outside. Tiny tucks extend from waistline to disappear into button-trimmed inset pockets, which prove useful features of the slightly gathered skirt. A narrow girle encircles the waist, crosses at front, and lies at back of this serviceable "EATON-MADE" model. Stitched cuffs finish the well-cut sleeves. State size and color. Price, delivered..... **15.00**

Modish Youthful Frock of All-wool Serge 16⁷⁵

Delivered

Size	Bust	Length Down Back
14	32	46 ins.
16	34	47 ins.
18	36	48 ins.
20	38	49 ins.

Colors Navy (as shown), Brown or All Black



84-773 The wool embroidery and modish style of this Misses' fine All-Wool Serge Frock leave no doubt as to its smartness. The wool is worked in darning stitch around neck, and forms squares at bottom of overblouse, which in front also shows effective motifs. Sleeves are slightly open at the wrist, and a narrow tie girle imparts a jaunty air. This two-piece "EATON-MADE" Dress fastens invisibly at side, and has skirt joined to a smart underbodice. State size and color. Price, delivered..... **16.75**



Taneta Silk Dress — **36⁸⁵**
Charmingly Designed

Delivered

Size	Bust	Full length down back
16	34	47 ins.
18	36	48 ins.
20	38	49 ins.

Colors Navy (as shown), Brown or Black.

All-Wool Serge — **22⁵⁰**
Smartly Fashioned

Delivered

Size	Bust	Full length down back
16	34	47 ins.
18	36	48 ins.
20	38	49 ins.

Colors Brown (as shown), Navy or Black.

Misses' Stylish Dress — **33⁰⁰**
of Satin and Georgette

Delivered

Size	Bust	Full length down back
16	34	47 ins.
18	36	48 ins.
20	38	49 ins.

Colors Dark Green (as shown), Navy, Taupe, Brown or Black.

Smart All-Wool Serge — **18⁵⁰**
Frock for Misses

Delivered

Size	Bust	Full length down back
14	32	46 ins.
16	34	47 ins.
18	36	48 ins.
20	38	49 ins.

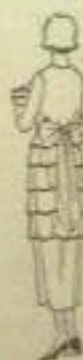
Colors Navy (as shown), or Black.



84-762 Just the style of a charming frock that youth loves to don, is this adorable one-piece model of shimmering Taneta silk. Ruffles after ruffles softly gathered on a China silk foundation is responsible for the quaint and very modish skirt. Sleeves too attached to a lace-trimmed silk underbodice are frilled at the wrist. An artistic beaded design affords a pleasing color contrast on the panel at side of which bodice closes. Crush girde on this Misses' fashionable dress shows a single bow and mesh ends at centre of back. Finished with deep lusted beas. State size and color. Price, delivered..... **36.85**



84-761 The All-wool Serge Frock is of a splendid quality, while its straight well-cut lines are dignified yet youthful. The front shows fine silk braid in an elaborate effective design which continues across tops of bust pockets. Buttons trim sleeves of this Misses' One-piece "EATON-MADE" Dress provided with a white cotton underbodice. A hint of the Russian blouse influence is imparted by panel at back of bodice from either side of which emerges a narrow girdle with fine silk tassel. Invisible closing is effected at side. Finished with deep lusted beas. State size and color. Price, delivered..... **22.50**



84-763 Much befriended as to the skirt is this Misses' attractive One-piece Frock of soft rich Satin. The bodice prettily embroidered in contrasting silk flow is charming in its simplicity. Sleeves of filmy Georgette Crepe with their demure ruffles of satin at wrist form a dainty contrast. The wide girdle ties in a graceful bow with mesh ends at back. Underbodice to which sleeves are attached is composed of white silk edged with lace. Frills on skirt are gathered on to a China Silk foundation on this modish dress. Finished with deep lusted beas, to allow for altering if necessary. State size and color. Price, delivered..... **33.00**



84-760 Accordion pleating and box pleats which has taken a very prominent position in the world of fashion is introduced on the skirt of this stylish Frock. All-wool Serge beautifully fine and soft texture is its material. A clever motif in fine silk is worked on front panel which is bound with braid and continues slightly below button-trimmed belt. This Misses' One-piece "EATON-MADE" Dress here offered in such a moderate figure has white cotton underbodice and invisible side closing. We call special attention to the moderate price of this attractive model. State size and color. Price, delivered..... **18.50**



Good Quality Taffeta Fashions this Frock 33.00
Delivered

Colors Navy and Rose (as shown), Brown and Sand, Taupe and Blue, All Black.
 Basted Hems.
 Sizes as in table to right.

84-753 The swift and rustle of soft Taffeta silk are brought to the air by this Misses' charming little One-piece Frock. Corded tucks control fullness of picot edged frill on neck and double ruffle on sleeves. Braid trimmed insets of silk in contrasting color and self-covered buttons adorn bodice cut in basque effect. The skirt is very modish, displaying a deep puff which contributes the fashionable bouffancy. Sleeves are attached to a net underbodice, while puff on skirt is mounted on a fine cotton lining. This Misses' stylish model fastens invisibly at side. State size and color. Price, delivered..... **33.00**



A Modish Frock of Artificial Silk Tricolette 49.50
Delivered

Colors Brown (as shown), Navy, Taupe or Black.
 Basted Hems. Sizes as in table below.

84-752 Tricolette that fashions this distinctive Dress is a fine silk material which has a rich appearance and conforms with ease to the modish of the day. Metallic thread sends a gleam of gold in and out amongst the artificial silk from beading on the rounded neck. A similar treatment is used for the border of the overbodice which is cut longer in the back. Its side openings are outlined by self-covered buttons to match those that dangle from the narrow girdle. The three-quarter sleeves like lower part of skirt are attached to a silk foundation, which also lines the bodice. Price, delivered..... **49.50**



Table of Sizes

Size	Bust	Full length down back
16	34	47 ins.
18	36	48 ins.
20	38	49 ins.

Misses' Satin Dress with Accordion Pleating 38.50
Delivered

Colors Navy (as shown), Taupe, Brown or Black.
 Basted Hems. Sizes as in table to left below.

84-750 Indefinable is the air of smartness created by accordion pleating and the attractive way in which it is introduced as a pepum on this heavy quality Satin Dress is most effective. Lace, in the new pointed medallions, is used on the neck and deep satin cuffs. The sleeves are of silk Georgette Crepe which lends a light airy touch to this attractive frock. The girdle is wide with self-covered buttons at both sides. The dress fastens at the shoulder and three side, and white silk, lace edged at the neck, lines the waist, while skirt beneath pepum is of silk. Price, delivered..... **38.50**



Misses' Coats, Suits and Skirts
 A full assortment of Misses' coats will be found on pages 23 to 32. Misses' skirts are shown on pages 39 to 101. Misses' suits on pages 33 to 41.

Silk Crepe-de-Chine Delightfully Fashioned 30.25
Delivered

Colors Taupe and Blue (as shown), Navy and Blue, Brown and Sand, All White, All Black.
 Basted Hems.
 Sizes as in table to left.

84-751 Picot edged ribbon run through loops of the material and accordion pleating proclaims the extreme modishness of this charming One-piece Silk Crepe-de-Chine Frock. The first mentioned adornment trims neck, while ribbon which ties at front and ends with bead ornaments is also noted on sleeves. The accordion pleating appears on tunic which is tucked and softly gathered below the row of hem-stitching. Sleeves of this Misses' model which has luxuriant side closing are attached to white net underbodice. Skirt beneath tunic of this pretty dress is of China silk. State size and color. Price, delivered..... **30.25**



Girls' Winter Coats
Smartly Fashioned, Delightfully Cosy

For descriptions see Page 133.

86-327
25.00
Delivered

86-325
18.50
Delivered

86-323
12.25
Delivered

86-326
15.00
Delivered

86-324
12.75
Delivered

86-321
13.50
Delivered

86-320
19.50
Delivered

86-328
18.00
Delivered

86-322
18.50
Delivered

Girls' Coats for Cold Weather Wear

Warm and Smartly Fashioned



86-531
15.75
Delivered



86-731
15.00
Delivered



86-831
14.00
Delivered



86-831
14.00
Delivered



86-231
16.50
Delivered



86-131
15.00
Delivered



86-431
16.75
Delivered



86-931
17.00
Delivered



86-031
13.50
Delivered

*Dainty and
Charming Blouses
which Splendidly
Exemplify the
New Styles and
Popular Fabrics
of the Season*



78-208
Georgette
8.50
Delivered



78-908
Crepes-de-Chine
3.95



78-408
Crepes-de-Chine
5.95
Delivered



78-1008
Colored Voile
3.95



78-808
Crepes-de-Chine
5.50
Delivered



78-308
Crepes-de-Chine
10.00
Delivered



78-608
Crepes-de-Chine
6.95
Delivered



78-008
Habutai Silk
4.50



78-508
Georgette
7.25
Delivered



78-1108
All-Wool
Jersey Cloth
8.95
Delivered

The waists shown on this page may be had in many other beautiful shades and colorings. See page 109 facing this for a full color choice and the descriptions of these delightful models.

*Pretty and
Becoming Waists
Fashioned
in
Attractive
Styles and
Materials*



78-707
Mabuta
Silk
10.00
Delivered



78-907
Creme-de-Chine
5.00
Delivered



78-907
Creme-de-Chine
8.95
Delivered



78-1007
All-Wool Serge
5.00
Delivered



78-1107
Creme-de-Chine
7.50
Delivered



78-307
Georgette
7.50
Delivered



78-807
Georgette
8.50
Delivered



78-507
Georgette
12.00
Delivered

78-207
Creme-de-Chine
6.75
Delivered



78-307
Mabuta
Silk
5.95
Delivered



78-407
Colored Velle
3.25



For descriptions and other colors in which these waists may be obtained, see opposite page.