



Cotton Flannel Shirts

Firm twill weave. Colorful plaids like those on expensive wool shirts. Warm and comfortable, practical and sturdy

Medium Weight

Our lowest priced plaid flannel shirts. Good looking and practical. You'll like them for work and sport because of their easy fitting comfort.

Handsome plaids in assorted patterns similar to illustration. Sorry, no choice. Closely woven twill weave cotton flannel that has a soft nap both inside and outside for warmth.

Full cut and roomy so they fit well after washing. And made to stand up under hard, everyday wear. The shoulder yoke is double to take up the strain across your back. All the main seams, that take most of the strain, are double stitched for strength.

Two big, button-through pockets, continuous sleeve facings, plastic buttons. Wash separately by hand. Shpg. wt., each, 14 oz.

Neck sizes: 14½, 15, 15½, 16, 16½, 17 in. See "How to Measure" at right. State size.

83 N 1421—Assorted plaid patterns. Each.....\$1.19

Warm, practical, colorful . . . made for hard wear

Heavyweight twill weave cotton flannel in bold, bright patterns. The kind of shirt he likes for work or sports, for indoors or outdoors. Both sides softly napped for warmth; main seams double stitched for long, hard wear

Heavy, full cut and well tailored

Warmer because made of heavyweight cotton flannel. Close twill weave and soft nap on both sides of fabric help keep out cold. That's why so many of our customers buy them year after year for work and sports. Assorted plaid patterns similar to illustration. Sorry, no choice, but we know you'll like them.

Sturdily made and full cut for long wear and working comfort. Keep their comfortable fit after washing, too. Double shoulder yoke relieves strain across shoulders; main seams double stitched.

Two roomy, button-through pockets. Continuous sleeve facings. Plastic buttons. Wash separately by hand. Shpg. wt., each, 1 lb. 6 oz.

Neck sizes: 14½, 15, 15½, 16, 16½, 17 inches. See "How to Measure" below. Please state size.

83 N 1459—Assorted plaid patterns. Each \$1.52

\$1.52
Each

Heavy and Sanforized

Made of same heavyweight twill cotton flannel as shirts at left, but Sanforized-Shrunk to keep perfect fit all ways. Fabric won't shrink over 1%. And you have a choice of assorted plaids or buffalo checks. A shirt for everyday wear at work or sports.

Cut to our regular dimensions with long tails, roomy chest and armpits. Rugged and well tailored with double shoulder yoke, double stitched main seams, continuous sleeve facings. Two large button-through pockets. Plastic buttons. Wash separately by hand. Shpg. wt., ea., 1 lb. 6 oz.

Neck sizes: 14½, 15, 15½, 16, 16½, 17 inches. See "How to Measure" below. Please state size.

83 N 1484—Assorted plaid patterns
83 N 1486—Red and black buffalo check Each
83 N 1487—Green and black buffalo check \$1.74

\$1.74
Each

HOW TO MEASURE FOR WINTER SHIRTS

Place a tape measure around neck. Number of inches is your correct size. If measurement is between two sizes, order larger size.

For Sears convenient Easy Terms, see page 174C





Medium heavyweight... \$1.25

Cotton flannel Shirts

Warm, practical and ready for lots of hard wear, these work shirts are long time favorites

Medium heavyweight. Our lowest priced cotton flannel shirts in deep, solid colors that won't show soil quickly. Just the thing for work or sports because they're cut roomy for working comfort on any job.

\$1.25

The twill weave cotton flannel fabric is softly napped both inside and outside for warmth and softness. All main seams are double stitched to make them stronger. Double shoulder yoke takes up strain across the back. Continuous sleeve facings. Large button-through pockets. Durable plastic buttons. Wash separately by hand. Why not add one of these shirts to your next Easy Terms order of \$10 or more? Shpg. wt., each, 14 oz.

Neck sizes: 14½, 15, 15½, 16, 16½, 17 inches. For correct fit, see "How to Measure," page 96. Please be sure to state size wanted.

83 N 1422—Gray

83 N 1423—Blue.....\$1.25

These warm shirts may be included in your Easy Terms order. Complete details are on page 174C



A Suede cloth... medium heavy... \$1.34



B Sanforized... heavyweight... \$1.70



C ½ wool... heavyweight..... \$1.94



D ½ wool... extra heavy... \$2.37

Warmer Flannel Shirts... of cotton or part wool

The kind a man wants for work because they don't show soil easily. And they're strongly made with double shoulder yokes and the main seams double stitched. Two roomy button-through pockets. Continuous sleeve facings

A Cotton suede cloth... medium heavy. Tight weave and soft nap on outside to protect you from chilly winds. Full cut to fit comfortably after washing. Made for hard wear. Wash separately by hand. Shpg. wt., each, 1 lb.

Neck sizes: 14½, 15, 15½, 16, 16½, 17 in. See "How to Measure," page 96. State size.

83N1424—Tan 83N1425—Gray. Each \$1.34

C ½ wool... heavyweight. 33½% reused wool for warmth and 66½% cotton for sturdiness woven into a heavyweight flannel. Full cut, roomy. A work shirt just made for long wear and comfort. Chafeless, faced neckband. Wash separately by hand. Shpg. wt., each, 1 lb. 4 oz.

Neck sizes: 14½, 15, 15½, 16, 16½, 17 in. See "How to Measure," page 96. State size.

83N1491—Gray 83N1492—Navy. Ea. \$1.94

B Sanforized-shrunk... heavyweight. Warmer, longer wearing twill cotton flannel. Softly napped both inside and outside. Keeps its good fit... fabric won't shrink over 1%. Wash separately by hand. Shpg. wt., each, 1 lb. 6 oz.

Neck sizes: 14½, 15, 15½, 16, 16½, 17 in. See "How to Measure," page 96. State size.

83 N 1482—Gray 83 N 1483—Blue. Ea. \$1.70

D ½ wool... extra heavy. Warmer because it has more wool. 50% reused wool and 50% cotton. Chafeless, faced neckband. Seams are strongly stitched. Cut full for working comfort with plenty of room in chest and armpits. Wash separately by hand. Shipping weight, each, 1 lb. 4 oz.

Neck sizes: 14½, 15, 15½, 16, 16½, 17 in. See "How to Measure," page 96. State size.

83 N 1494—Gray 83 N 1495—Navy. Ea. \$2.37



A 94c
Each



F \$1.39
Each



C 94c
Each



E \$1.39
Each



B 94c
Each



K \$1.86
Each



H \$1.77
Each



J \$1.86
Each



G \$1.77
Each



L \$1.86
Set

Gift Ties he will wear ... and show off, too

ILLUSTRATED ON OPPOSITE PAGE

Smart patterns in rich colors to please the most discriminating. Fine fabrics that drape gracefully, knot easily. All expertly made, wrinkle resistant

Wool or rayon, plain or patterned . . . Each 94c

A 100% wool . . . solid colors. Nationally advertised "Mel-brokes" famous for their deep, rich colors, springy feel, and their stubborn resistance to wrinkling. Wool lined.

Colors: royal (deep bright) blue, Yale (light navy) blue, chocolate (dark) brown, wine (dark red), cardinal (bright red) or black (not illustrated). Shpg. wt., each, 3 oz.

33 N 3811—Please state color . . . Each 94c 2 for \$1.83

B Scroll design on rich woven rayon satin brocade. Fully interlined with 100% wool for resiliency. 4 inches wide at base. Faced with rayon. Shpg. wt., each, 3 oz.

Colors: blue, maroon (dark red) or brown predominating.

33 N 3870—Please state color . . . Each 94c 2 for \$1.83

C Sparkle design . . . appreciated by smart men. Lustrous rayon satin brocade. 100% wool interlining resists wrinkling. Base 4 in. wide, rayon faced. Shpg. wt., each, 3 oz.

Colors: blue, maroon (dark red) or brown predominating.

33 N 3868—Please state color . . . Each 94c 2 for \$1.83

D Leaf pattern . . . for any man on your gift list. Rayon satin brocade. All wool interlining means wrinkle resistance. 4 inches wide at base. Rayon faced for rich appearance. Shpg. wt., each, 3 oz.

Colors: blue, maroon (dark red) or brown predominating.

33 N 3869—Please state color . . . Each 94c 2 for \$1.83

Finer fabrics, handsomer patterns . Each \$1.39

E Paisley print. Rayon jacquard crepe sets off the rich coloring of the pattern. Resists wrinkling because it's interlined with 100% wool. Rich rayon facing. 4 in. wide at base for smart, full appearance. Shpg. wt., each, 3 oz.

Colors: blue, maroon (dark red) or brown predominating.

33 N 3871—Please state color . . . Each \$1.39 2 for \$2.69

F Leaf design on expensive looking woven rayon satin brocade. 100% wool interlining for wrinkle resistance, easy knotting. 4 in. wide at base for full appearance. Rayon facing gives tie a custom make effect. Shpg. wt., each, 3 oz.

Colors: blue, maroon (dark red) or brown predominating.

33 N 3872—Please state color . . . Each \$1.39 2 for \$2.69

Luxurious fabrics, hand tailored . . Each \$1.77

G Allover pattern. Fine quality rayon jacquard crepe. Knots up the way particular men like. Large, generous, custom shape for graceful drape. 70% wool, 30% rayon interlining. Rayon crepe facing. Shpg. wt., each, 3 oz.

Colors: blue, maroon (dark red) or brown.

33 N 3856—Please state color . . . Each \$1.77 2 for \$3.42

H Oval stripe design printed on rayon jacquard crepe that brings out the beauty of pattern. Smart "custom shape" found only in better ties. Rayon crepe facing, 70% wool, 30% rayon interlining. Shpg. wt., each, 3 oz.

Colors: blue, maroon (dark red) or brown.

33 N 3860—Please state color . . . Each \$1.77 2 for \$3.42

Hand painted, handmade Ties . . . Each \$1.86

J Leaf design. Unusual color combinations because each tie is individually painted by a real artist. Hand tailored of luxurious rayon foulard. Rayon crepe facing, 70% wool, 30% rayon interlining. Shpg. wt., each, 3 oz.

Colors: blue, maroon (dark red) or brown predominating.

33 N 3861—Please state color . . . Each \$1.86 2 for \$3.60

K Novelty Stripes. Colorful, gay . . . each one distinctively yours. Rich rayon foulard fabric. Tailored by hand in the large "custom shape." Ends lined with rayon crepe. 70% wool, 30% rayon interlining. Shpg. wt., each, 3 oz.

Colors: blue, maroon (dark red) or brown predominating.

33 N 3862—Please state color . . . Each \$1.86 2 for \$3.60

Matched Tie and Handkerchief Set . . . \$1.86

L Hand painted patterns on matching 2-pc. set. Rayon jacquard faille in a smart scroll pattern. Well tailored tie neatly hemmed pocket handkerchief about 12x12 inches. Makes a handsome, colorful gift.

Colors: blue, maroon (dark red) or brown.

33 N 3863—State color. Shpg. wt., set, 8 oz. . . . Set \$1.86



Fine PILGRIM Dress Shirts . . always a grand gift idea

Choice of two fine fabrics. Vat dyed colors remain clear after repeated launderings. The kind of shirts men like to get as Christmas gifts . . . the kind you like to give because you know they'll enjoy wearing them.

Mercerized cotton broadcloth

M Lustrous, self-color, rayon stripes give fabric life and sparkle. Carefully designed, well-tailored to follow natural body lines . . . no bunching at waist . . . no bulkiness under arms. Non-wilt collar needs no starch, stays neat all day. Washfast color.

Sizes: 14-in. neck with 32, 33-in. sleeves; 14½-in. neck with 32, 33, 34-in. sleeves; 15, 15½, 16-in. neck with 32, 33, 34, 35-in. sleeves; 16½, 17-in. neck with 33, 34-in. sleeves. State neck size, sleeve length. Shpg. wt., ea., 1 lb. 1 oz.

33 N 121—White 33N124—Blue

Rayon and cotton gabardine

N Good-looking and durable . . . 51% rayon, 49% cotton. Takes no special care in laundering; just wash like any good cotton. Sanforized-Shrunk fabric won't shrink over 1%. Soft collar has removable celluloid stays. Available after November 1.

Sizes: 14-in. neck with 32, 33-in. sleeves; 14½-in. neck with 32, 33, 34-in. sleeves; 15, 15½, 16-in. neck with 32, 33, 34, 35-in. sleeves; 16½, 17-in. neck with 33, 34-in. sleeves. State neck size, sleeve length. Shpg. wt., each, 1 lb. 3 oz.

33 N 153—Natural (cream color) only

Tie sold separately. Ties illustrated with shirts, and other smart patterns are shown at left.

Use Sears Easy Payment Plan to make it a Merry Christmas for all . . . read complete details on page 174C of this book. And you save, too, when you buy by mail from Sears.



100% virgin wool or rich rayon gift Robes to please particular men

Every man enjoys the luxury of a comfortable robe to lounge around in on a leisurely Sunday morning or to relax in of an evening after a day's work. He'll appreciate your thoughtfulness if you make it one of these truly fine robes. Full length, wrap-around models with wide, double shawl collars. Smart plain colors. Each boxed

All wool flannel . . . medium weight. **\$849**
Our lowest priced all wool robe in one of the most popular robe fabrics. Soft and warm, with that comfortable feeling that you get from wool on chilly mornings and a neat, tailored look about it. Shpg. wt., each, 2 lbs. 11 oz.
Sizes: small (33 to 37-inch chest); medium (38 to 42); or large (43 to 46). Please state size.
33 N 1995-Blue 33 N 1996-Maroon (dark red)

Worsted flannel . . . medium weight. **\$1448**
A quality fabric woven from only the longest, strongest strands of wool. All the warmth of ordinary wool but lighter in weight, richer in feel; yet with enough body for smooth drape, trim fit. Shpg. wt., 2 lbs. 4 oz.
Sizes: small (33 to 37-inch chest); medium (38 to 42); or large (43 to 46). Please state size.
33 N 1905-Navy blue 33 N 1906-Maroon (dk. red)

Lustrous rayon . . . richly brocaded. **\$598**
Notice the rich, self-color pattern in this robe? It adds interest to the fine, soft fabric and makes such a luxurious looking gift. Woven of rayon yarns on a jacquard loom. Carefully tailored. Shpg. wt., each, 2 lbs.
Sizes: small (33 to 37-inch chest); medium (38 to 42); or large (43 to 46). Please state size.
33 N 1913-Blue 33 N 1914-Maroon (dark red)



Cold weather Caps . . . two styles

A Shearling flaps . . . cotton lining. **\$188**
Fine quality cotton gabardine lined with soft cotton flannel. Tie-top flaps of natural color lamb's wool . . . turndown on cold days to keep ears warm. Shipping weight, 12 oz.
Sizes: 6 3/4, 6 7/8, 7, 7 1/8, 7 1/4, 7 3/8, 7 1/2.
33 N 4876-Tan. Please state size

B Deep pile alpaca flaps and lining. **\$394**
Water repellent, wind resistant cotton poplin. Tie-flaps of thick alpaca pile; crown lined with same pile fabric. Transparent shield protects eyes; hood tucks into jacket, protects neck. Both fold away. Shipping weight, 13 ounces.
Sizes: 6 3/4, 6 7/8, 7, 7 1/8, 7 1/4, 7 3/8, 7 1/2.
33 N 4877-Olive drab. Please state size

All wool Coat Sweaters

Medium weight. **\$362**
All wool worsted, which means that only the longest and strongest strands of yarn are used and tightly spun for extra warmth and wear. Knit in an elastic rib stitch to assure sleek fit. Surface slightly napped. Raglan sleeves. Wash separately by hand in Lux. Shpg. wt., 1 lb. 1 oz.
Chest sizes: 36, 38, 40, 42, 44 in. Please state size.
83 N 2262-Medium blue
83 N 2263-Camel (med.) tan
83 N 2264-Walnut (dk. brown)
83 N 2265-Oxford (lt.) gray

100% wool Sports Coats

Heavier . . . weight. **\$549**
yet fits comfortably under suit coat because the elastic rib stitch assures smooth fit. Knit of tightly twisted worsted yarns with the strength and heavy feel that have made it a favorite. Taped neck seams, reinforced buttonholes for longer wear. Wash separately by hand in Lux. Shipping wt., each, 2 lbs. 4 oz.
Chest sizes: 36, 38, 40, 42, 44, 46 in. Please state size.
83 N 2273-Dark gray
83 N 2274-Brown heather
83 N 2275-Navy (dark) blue.

Heavyweight wool Shirts

Rugged as the outdoors, it protects against bitter cold, stands up under hard wear. Sturdy fabric woven of 52 1/2% new wool, 47 1/2% reused wool. Most popular of patterns . . . big bold buffalo checks. Full cut, roomy for working comfort. Double shoulder yoke. Faced neckband prevents chafing. Button flap pockets. Wash separately by hand. Shpg. wt., 1 lb. 10 oz.
Neck sizes: 14 1/2, 15, 15 1/2, 16, 16 1/2, 17 and 18 in. State size.
83 N 1622-Red and black



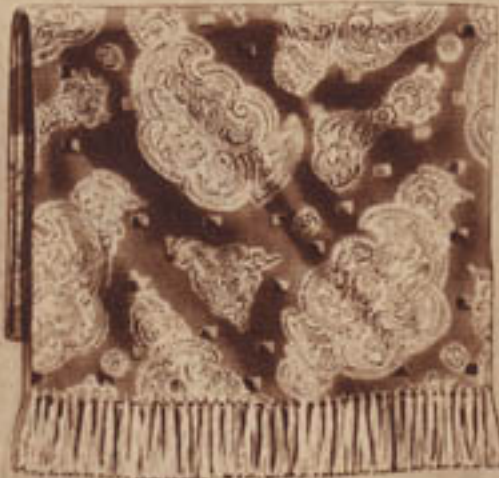
A \$1.88



B \$1.88



C \$2.39



D \$2.39



E 84c



F \$1.50

Say "Merry Christmas" . . . the practical way

Mufflers and suspenders . . . the men's wear accessories that give him comfort and smartness. Good looking mufflers that keep him warm. All elastic suspenders in regular and extra lengths; "give" so easily he'll hardly know he has them on.

A All wool . . . bright plaids. Wool for warmth and assorted plaid patterns for color. Self fringed ends. About 12x48 inches, including fringe. Individually boxed. Hand wash separately. Colors: navy blue, maroon (dk. red), or brown.
33 N 3503—State color. Shpg. wt., 7 oz. . . . \$1.88

B All wool . . . solid colors. Warm and always smart. Self fringed ends. About 12x50 inches, including fringe. Boxed. Hand wash separately. Colors: maroon (dark red), navy blue, tan, canary (light yellow), white. Shpg. wt., 7 oz.
33 N 3507—Please state color. . . . \$1.88

C White muffer of rayon crepe in jacquard weave. Finished with self fringe at ends. Size about 12x52 inches, including fringe. Rich looking, smart for dress wear. Individually boxed. Dry cleaning recommended. White only.
33 N 3508—Shipping weight, 6 oz. . . . \$2.39

D Paisley print rayon muffer. Assorted dobby weave crepes and twill weaves. Knotted fringe ends. About 12x50 inches, including fringe. Assorted patterns. Boxed. Dry clean. Colors: navy blue, maroon (dk. red), brown.
33 N 3509—State color. Shpg. wt., 6 oz. . . . \$2.39

E 3/4-inch all elastic suspenders . . . clip-on ends. Rich colors. Silver color metal trimmings. Adjustable back. Shpg. wt., 3 oz. Colors: blue, maroon (dark red), or brown. Lengths: regular (38 in.), ex. long (42 in.)
33 N 3611—State color, length. . . . 84c

F "Pioneer" 1 1/2 in. elastic suspenders. Hazel color (dark brown) pigskin leather button-on ends and trim. Y-back. Gold plated metal parts. Solid colors: dk. blue, maroon (dk. red), dk. brown. Lengths: regular (38 in.), ex. long (42 in.)
33 N 3605—State color, length. Postpaid. . . \$1.50



Handsome Muffer

Easy draping, dazzlingly white. A gift that's always in good taste **\$1.88**

The sparkling freshness of that touch of white against the collar of his dark coat marks him as a man who knows how to dress well. And it's in good taste with any color coat or suit, tie or shirt.

Fine quality rayon crepe that's a favorite for dress-up wear. Finished at the ends with knotted fringe. Approximately 12 inches wide, 50 inches long (including the fringe). Dry cleaning is recommended. Individually boxed to reach him fresh and clean. Shipping weight, each, 6 ounces.

33 N 3506—White only. . . . \$1.88

Christmas giving made easy with
Sears Easy Payment Plan . . .
see page 174C for complete details.



A Plain color rayon.....**25c** **B** Two-tone stripes.....**33c**



C Soft "plaid" pattern....**33c** **D** 6x3 rib, solid colors....**45c**



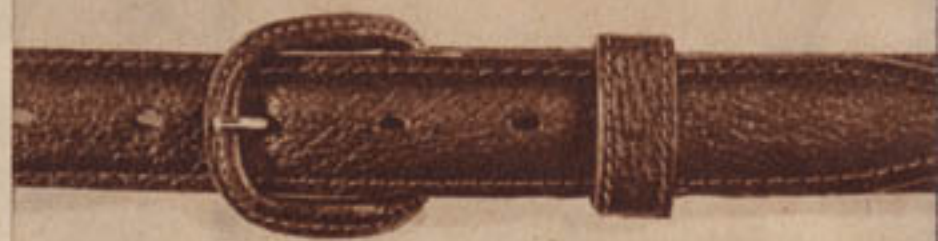
E Fine ga. rayon.. expensive knit-in patterns.**49c**



F Cowhide, initialed silver buckle.....**\$2.29**



G Steerhide, initialed silver buckle.....**\$3.28**



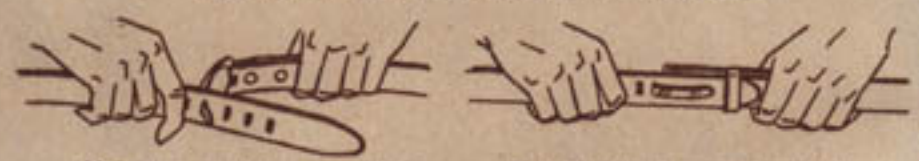
H Padded pigskin, matching buckle.....**\$1.29**



J Embossed cowhide, Western style.....**\$1.09**



K "Stratoline" ... fine pigskin.....**\$3.00**



Slip the modern one-piece "Stratoline" buckle through one of the belt holes.

Press buckle down against belt. It's neat and streamlined... flat and secure.

Attractive Socks and Leather Belts . . . smart gifts a man will enjoy wearing

Fashion correct dress socks in handsome patterns or smart plain colors. Reinforced at points that get hardest wear. Order from descriptions below. Shipping weight, pair, 3 oz.

- A** Plain color rayon. Mercerized cotton tops, heels, toes. High spliced heels. Colors: black, brown, white. Sizes: 10, 10½, 11, 11½, 12. State size, color. 86 N 2091—Regular length only.....Pair **25c**
- B** 2-tone stripes. Mercerized cotton and rayon. Mercerized cotton heels, toes, tops. Colors: blue, brown, maroon. Sizes: 10, 10½, 11, 11½, 12. State size, color. 86 N 1976—Regular length 86 N 1977—Short length.....Pair **33c**
- C** Soft "plaid". Mercerized cotton with rayon. Cotton reinforced heels, toes. Colors: brown, black, maroon. Sizes: 10, 10½, 11, 11½, 12. State size, color. 86 N 1980—Regular length 86 N 1981—Short length.....Pair **33c**
- D** 6x3 rib; solid colors. Rib knit of 4-ply mercerized cotton yarns. Colors: black, brown, navy blue, maroon. Sizes: 10, 10½, 11, 11½, 12. State size, color. 86 N 2036—Regular length 86 N 2037—Short length.....Pair **45c**
- E** Fine ga. rayon. Asst. patterns. Cotton tops; reinforced heels, toes, double soles. Colors: med. blue, brown, black. Sizes: 10, 10½, 11, 11½, 12, 13. State size, color. 86 N 1930—Regular length 86 N 1931—Short length.....Pair **49c**

Good looking, comfortable belts you'll be proud to give . . . or keep for yourself. Order from descriptions below. Sizes: 30, 32, 34, 36, 38, 40, 42 or 44-inch waist.

- F** 1½-in. Genuine cowhide. Sterling silver buckle, stamped initial. Cowhide lining. No I, O, Q, U, V, X, Y, Z. Shpg. wt., 8 oz. 18c Fed. Tax incl. 33 N 3764—Black only. Please state size, print initial.....Set **\$2.29**
- G** 1-in. smooth steerhide. Sterling silver buckle, inlaid initial. Sueded cowhide lining. No I, O, Q, U, V, X, Y, Z. Shpg. wt., 7 oz. 34c Fed. Tax incl. 33 N 3769—Black 33 N 3768—Brown. State size, print initial. Set **\$3.28**
- H** 1-in. padded pigskin. Padding gives it a soft, rounded style. Pigskin covered tongue buckle and loop. Sueded cowhide lining. Shpg. wt., 5 oz. 33 N 3778—Black 33 N 3779—Tan. Please state size..... Each **\$1.29**
- J** 1-in. cowhide . . . Western style. Practical quality genuine cowhide embossed in a leaf and floral design. Engraved type steel buckle, tip, loop. 33 N 3786—Brown only. Shpg. wt., 5 oz. Please state size..... Each **\$1.09**
- K** 1-in. fine pigskin. Nationally advertised "Stratoline" belt. Lined with cowhide. Oval buckle of silver plated metal. 33 N 3701—Brown 33 N 3702—Black. State size. Postpaid. Each **\$3.00**



Fraternity Prep
OUR OWN TRADE MARK

Older boys will welcome a pair of Slacks

Buckshot pattern corduroy

\$304

• Rugged thickset corduroy with a soft finish that is comfortable to wear. A fabric that can take it—will withstand wear and plenty of it. Buckshot (speckled) pattern is slow to show soil. Expertly tailored with serged seams that won't ravel and five large, sturdy pockets. Styled the way boys like them with dropped belt loops and cuffed bottoms. (Belt not included). Shipping weight, 2 pounds 2 ounces.

Even sizes: 6 to 16. Please state size and inseam. See measuring chart below.

40 N 4236—Brown
40 N 4237—Blue... \$3.04

All virgin wool, diagonal weave

\$498

• Rich, 100% all wool twill, tightly twisted for strength and durability. Typically young fellows' slacks, cut along smart, semi-drape lines—they'll make an ideal Christmas gift, because boys like to combine them with sweaters or odd jackets. And he can always use an extra pair for school or dress. Tailored with drop belt loops, four front pleats, cuff bottoms and five roomy pockets. Belt is not included. Shpg. wt., 2 lbs.

All sizes: 9 to 18. Please state size and inseam. See chart below.

40 N 4205—Medium blue
40 N 4206—Medium brown... \$4.98

HOW TO ORDER BOYS' PANTS AND SLACKS

Size...	6	7	8	9	10	11	12	13	14	15	16	17	18
Waist, in.	23 1/2	24	24 1/2	25	25 1/2	26	26 1/2	27	27 1/2	28	28 1/2	29 1/2	31
Inseam	19	20 1/2	21	23	24	24 25	26	27	27	28	28	29	30
Sizes, in.	22	24	25	25	27	28	28 1/2	29	30	31	
Inches	26	27	28	29	29 1/2	30	31	32

Measure waist over trousers without belt. Measure leg inseam from crotch to heel. Order nearest corresponding size. State size and inseam. Come only in inseam lengths shown below waists.

Select a Loafer Coat, Sweater or Polo Shirt for that young man

Boyville
REG. U.S. PAT. OFF.

ILLUSTRATED ON OPPOSITE PAGE

A Smart tri-color stripes in a polo shirt he'll be more than happy to find on Christmas morning. Knit of heavyweight cotton yarns; well-made with ribbed cuffs and crew neck. Long sleeves are warmer. Wash separately. Shipping weight, 8 ounces.

Please state size: 8, 10, 12, 14, 16, 18. Size scale below.
43 N 3027—Blue stripe 43 N 3028—Maroon stripe. **\$1.39**

B Plain color all-over novelty weave Polo Shirt... a perfect gift for any boy. You'll agree it's one of the smartest you've seen. Comfortable for school or sports wear. Knit of strong heavyweight cotton yarns in rich colors. Matching ribbed crew neck and cuffs. Wash separately. Shipping weight, 8 ounces.

Please state size: 8, 10, 12, 14, 16, 18. Size scale below.
43 N 3002—Blue 43 N 3003—Maroon (wine red). **\$1.39**

HOW TO ORDER BOYS' POLO SHIRTS

If chest measures.....	24	26	28	30	32	34	Inches
If height measures.....	47	52	54	59	64	66	Inches
Order size.....	8	10	12	14	16	18	

Measure chest over underwear, well up under arms

C 100% pure wool worsted Pullover. No boy ever has enough sweaters... add this to his collection on Christmas. Knit of medium heavy weight yarns. Rib cuffs on sleeves and bottom. Neat rib trim on V-neck opening. Shipping weight, 12 oz.

Please state size: 8, 10, 12, 14. See size scale below.
43 N 7147—Powder (light) blue
43 N 7148—Luggage (medium) brown... **\$4.19**

HOW TO ORDER BIG BOYS' SWEATERS

If chest measures.....	26	28	30	32	Inches
If height measures.....	52	54	59	64	Inches
Order size.....	8	10	12	14	

E Snappy two-tone Loafer Coat... for a Christmas gift that will really please him. A smart combination of cocoa (medium) brown all wool fabric in the front with sleeves, collar, lapels, and back of contrasting tan all wool glen plaid. Well-fitting three-button model is half lined with lustrous rayon. Convertible collar. Chest pocket, 2 lower set-in pockets. High quality "Fraternity Prep" tailoring. Shipping weight, 2 pounds.

State size: 10, 12, 14, 16, 18, 20. See size chart below.
460 N 2316—Two-tone Loafer Coat... **\$9.95**

HOW TO ORDER BOYS' LOAFER COATS

Measure height without shoes. Measure chest over shirt or underwear, well up under arms. Refer to chart below and order nearest size.	If Height is in inches	And Chest is in inches	Order Size
460 N 2316—Two-tone Loafer Coat... \$9.95	50 to 53	25 1/2 to 27 1/2	10
	54 to 57	27 to 29	12
460 N 2316—Two-tone Loafer Coat... \$9.95	58 to 61	28 1/2 to 30 1/2	14
	62 to 65	30 to 32	16
	66 to 69	32 to 34	18
	70 to 73	34 to 36	20

Delight little boys with one of these Play Outfits for Christmas

ILLUSTRATED ON OPPOSITE PAGE

F Fine pinwale corduroy Bib Pants... he'll enjoy his play and work hours if he has bib pants like these. Well-made of pinwale weave corduroy that will take lots of hard wear. Bar-tacked at all points of strain for added wear. Adjustable suspenders, wide cuff bottoms. High cut bib, suspenders and waistband are lined. 2 large pockets. Shipping weight, 1 lb. 5 oz.

State size: 3, 4, 5, 6, 7, 8, 9, 10. Chart on opposite page.
40 N 3360—Dark blue 40 N 3361—Dark brown... **\$1.92**

G Navy blue serge Sailor Suit... Christmas will be happier for him if he finds this sailor suit under his tree on Christmas morning. The kind of a gift little boys like... and the navy blue serge will wear well too. 15% wool, 85% cotton. Blouse is middy style, has white braid trim, sleeve insignia, and button cuffs. Nautical broad fall front longies. Bos'n type whistle with cord is included. Shipping weight, 1 pound 4 ounces.

State size: 3, 4, 5, 6, 7, 8. See chart on opposite page.
40 N 3104—Navy blue middie style sailor suit... **\$3.90**

Use Sears convenient Easy Terms... details on page 174C



A \$1.39



B \$1.39



C \$4.19



D \$4.19



E \$9.95



F \$1.92



G \$3.90



H \$2.46

H 8-piece Range King

\$2.46 • 8 different pieces to this little boys' outfit.

• Ideal Christmas gift.

A cowboy outfit to satisfy any little boy's heart's desire at Christmas time. Wide flaring cowboy pants of strong cotton suiting with orange side pieces. Plaid cotton flannel shirt. Cowboy hat; khaki colored bandana. Plus a lariat, belt and holster that holds a toy pistol. Shpg. wt., 2 lbs. 12 oz. State size: 4, 6, 8, 10. See below. 40 N 4519—Cowboy outfit. \$2.46

How to Order Playclothes

For garments at left: Measure height without shoes. Measure his waist over pants or trousers without belt.

If height is	And waist is	Order size
34 to 36 in.	20 to 22 in.	3
37 to 39 in.	21 to 23 in.	4
40 to 41 in.	21½ to 23½ in.	5
42 to 44 in.	22 to 24 in.	6
45 to 46 in.	22½ to 24½ in.	7
47 to 49 in.	23 to 25 in.	8
50 to 51 in.	23½ to 25½ in.	9
52 to 53 in.	24 to 26 in.	10

Boyville Jr.
OUR OWN TRADE MARK

For the little fellow



Two-tone Helmet, smooth finish contrasting with Pig grained finish sheepskin leather. Smart shearling pelt visor . . . warm cotton lining. Shipping weight, 8 ounces.

Sizes: small (6 1/4-6 3/8); medium (6 3/4-6 7/8); large (6 3/4-6 7/8). Please state size.
43 N 612—Brown shades. \$1.39



All wool Scarf . . . a warm gift for that little lad. Blended colorful plaid patterns similar to illustration. Medium heavy weave to keep him warm. Size, about 9 by 42 in. Comes in attractive gift box.

Colors: blue plaids, maroon plaids, brown plaids. State color. Shpg. wt., 5 oz.
43 N 330—Assorted patterns. . . . \$1.39



Gift box Tie Set . . . two ties similar to illustration in colors and patterns. Ready tied style, rayon and cotton fabrics. Adjustable band. 2 different colors, patterns to a set. Shipping weight, 8 ounces.

43 N 217. . . \$1.00

"Bugs Bunny" Set for junior boys. Plain color, ready-tied rayon tie has printed character design. Plain color matching pocket handkerchief. Gift box. Shipping weight, 8 ounces.

State color: blue, red, or brown.
43 N 216. . . 59c

Boyville
MIL. U. S. PAT. OFF.

Smartly styled gifts for older boys

Practical suggestions for the boy who needs something to wear



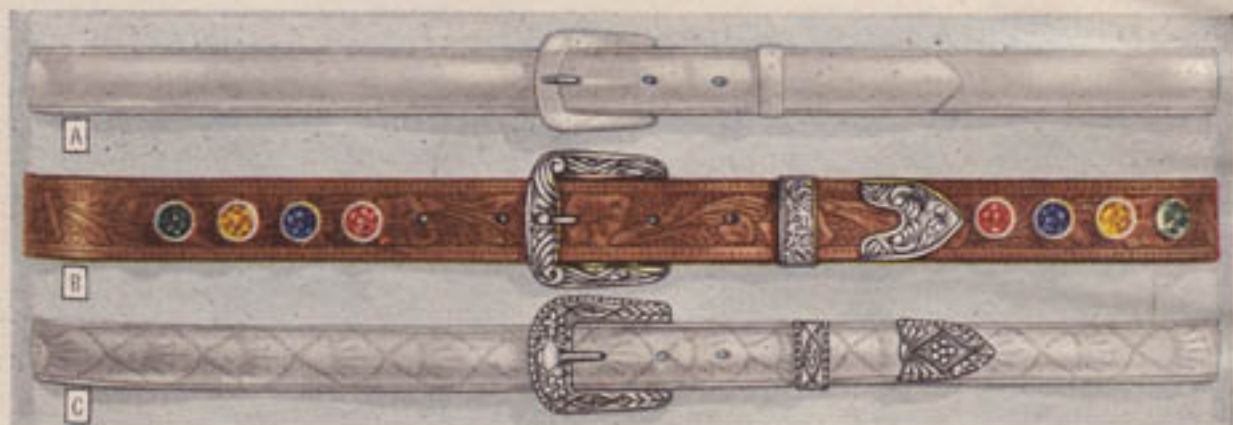
Fine sheepskin leather Helmet. Napped cotton lining for warmth . . . laskin-lambskin visor for smart appearance. Adjustable chin strap; snap fastener. A perfect gift he can wear for school and play.

Sizes: small (6 1/2-6 3/8); medium (6 3/4-6 7/8); large (7-7 1/8). Please state size. Shpg. wt., 8 oz.
43 N 718—Brown shades. \$1.39



Cowhide—Western type Belt with matching Wallet . . . both embossed with "buckin' broncho" western design. 1-inch belt has nickel-plated metal buckle, tip, loop. Comes in gift box. 18c Federal tax included. Shipping weight, 7 ounces.

Sizes: 24, 26, 28, 30, 32-in. waist. Please state size.
43 N 306—Color: tan. \$2.37



A Clear plastic Belt. Strong, long wearing with plastic buckle and loop. He'll like it.

State size: 22, 24, 26, 28, 30, 32-in. waist. Shpg. wt., 4 oz.
43 N 323—3/4 in. wide. . . . 49c

B Western type cowhide Belt, 1 inch wide, with plastic jewel-like stones as illustrated. Very popular.

State size: 22, 24, 26, 28, 30, 32-in. waist. Shpg. wt., 6 oz.
43 N 329—Tan \$1.39

C Popular plastic Western style Belt with an attractive design. Embossed metal buckle, tip, loop.

State size: 22, 24, 26, 28, 30, 32-in. waist. Shpg. wt., 5 oz.
43 N 327—3/4-in. wide . . . 75c



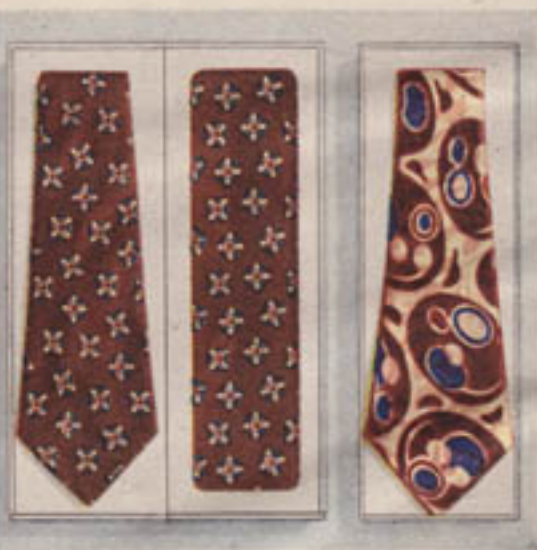
Smooth rayon pile Earmuffs . . . just the thing to keep his ears toasty warm all winter long. They make a perfect gift for little boys. Lined with warm cotton fleece. Mounted on adjustable metal band, which folds up neatly to fit into his pocket. Gay colors his friends will envy . . . pick his favorite.

State color: brown, blue, red, green. Shipping weight, 3 ounces.
43 N 717 35c



Neat Suspenders . . . all elastic with lots of "snap." Fine rayon web finished in easily attached clip ends. Adjustable length up to 38 inches. Neatly packed in folders. Shpg. wt., 4 oz.

State color: blue, brown, maroon.
43 N 331. . . \$1.39



Big boys' Tie and Handkerchief Set . . . attractively gift boxed. Tie is about 45 in. in length; handkerchief about 12x12 in. Fine rayons in patterns similar to illustration. Shpg. wt., 7 oz.

State color: blue, brown, maroon.
43 N 333. . . \$1.19

Big boys' Necktie . . . in attractive gift box. Full 45-in. length. Fine rayons in assorted prints. All wool interlining to hold its shape. Hand sewing. Rayon lined ends. Shipping weight, 4 ounces.

State color: blue, brown, maroon.
43 N 332. . . \$1.00



For your boy's happiest Christmas . . . *Fraternity Prep* 2-piece Suits

Attractive, campus styled Sport Suits

Coat	2-piece Outfit	Slacks
\$9.75	\$15.00	\$5.35

Sport Coat . . . All wool suiting in a rich brown color. Manly broad shoulders, narrow waist. Lustrous rayon half lining.

All sizes below. Shpg. wt., 2 lbs.
 †60 N 2453—Cocoa (Med.) brown coat \$9.75

Gabardine Slacks. Rich blend of 60% wool worsted, 40% rayon. Front pleats, 5 pockets, cuff bottoms.

All sizes below. Shpg. wt., 2 lbs.
 †60 N 2407—Dark brown. . \$5.35

Complete 2-piece outfit, made up of sport coat and slacks above.

All sizes below. Shpg. wt., 4 lbs.
 †60 N 2476—2-piece outfit. \$15.00

Coat	2-piece Outfit	Slacks
\$9.95	\$14.85	\$4.98

Sport Coat. All virgin wool, rich glen plaid—sporty “big yarn” fabric has the “Zip” boys want. Rayon half lining. *All sizes below.*

†60 N 2465—Medium blue
 †60 N 2464—Tan \$9.95

Diagonal twill weave Slacks in all new wool. Dropped belt loops, 5 pockets, pleats, cuffs. *All sizes below.*

†60 N 2424—Medium blue
 †60 N 2422—Medium brown, \$4.98

Complete 2-piece outfit—includes sport coat, slacks above. *Sizes below.*

†60 N 2474—Tan and brown
 †60 N 2475—Blue \$14.85
 Shpg. wts., each, 2 lbs.; outfit, 4 lbs.

Our best virgin wool Dress Suits

2-piece Suit
\$15.75

Colorful, nubbed tweed. All virgin wool suit in big yarn, sporty pattern for style-minded young men. Has all the lasting sturdiness tweeds are famous for. Smooth draping single breasted coat with smart broad shoulders. Half lined with high luster, easy fitting rayon. Stylish pleated drape model slacks; zip fly; five pockets; cuff bottoms.

Sizes: 28 to 36-inch chest. See below. Please state size. Shipping weight, 3 pounds 8 ounces.

†60 N 2835—
 Tan tweed Suit. \$15.75

2-piece Suit
\$14.95

All wool diagonal weave suiting. Finely textured with attractive, subdued overplaid. Dressy double breasted coat is tailored with broad shoulders; has lustrous rayon half lining. Drape model slacks with smart pleated front, zip fly, 5 pockets, cuff bottoms. Tailored to hold their shape, resist wrinkling.

Sizes: 28 to 36-inch chest. See below. Please state size. Shipping weight, 3 pounds 12 ounces.

†60 N 2865—Rich med. blue
 †60 N 2866—
 Rich med. brown \$14.95

HOW TO ORDER: State chest, waist, inseam measure; also give height, weight, age.
HOW TO MEASURE: Chest: measure over shirt or blouse, well up under arms and over shoulder blades. Waist: measure at natural waistline, just above hipbones—over trousers but without belt. Inseam: measure from crotch down along inseam to top of heel.

SIZES FOR SPORTS OUTFITS ABOVE: 28 to 36-inch chests; 25½ to 32-inch waists; 25 to 33-inch inseams; see “How to Order” at right.

† Shipped from Chicago. Order from Sears nearest mail order house and pay postage from there





A Chenille Crib Spread \$3.49

B Rayon Taffeta Quilt Set \$5.85

C Rayon Satin Quilt Set \$11.95



D "Teddy-down" Blanket \$2.98

E Warmer 50% Wool \$5.49

F New Blan-quilt \$5.98



G \$1.00

H \$1.00

J \$1.00

K \$1.84

L

M

Hand Embroidered Dresses \$2.98 Each

N 25% Wool Bathrobe \$1.98



Sheepskin lined Jacket \$12.50
 • Genuine sheepskin button-in lining, warmest of all ski-jacket linings, fits smoothly inside poplin jacket.
 • Close-set buttons on poplin band.
 • Darted in back for a better fit.

Sturdy Snow Wear for a healthy outdoor life . . . Easy Terms available

Kasha-lined Jacket **\$6.98**

Kasha-lined Ski Jacket is close-woven wind-resistant cotton poplin, with zipper closing. Cotton kasha lining adds warmth. Convertible club collar, 2-piece sleeve with adjustable tabs. Reinforced seams, taped hems. About 25 in. long. (Ski Pants not included.) *Sizes: 12, 14, 16, 18, 20. State size. Shpg. wt., 2 lbs.*

- ♦7 N 3804—Natural tan ♦7 N 3806—Navy blue
- ♦7 N 3805—Ice (pale) blue. Each \$6.98

Same style with button-in inner lining of warm, genuine sheepskin (see insert illustration). *Sizes above. State size. Shpg. wt., 2 lbs. 13 oz.*

- ♦7 N 3801—Natural tan ♦7 N 3803—Navy blue
- ♦7 N 3802—Ice (pale) blue. Each \$12.50

\$15.98

Semi-Pro Ski-Suit of handsome part wool gabardine (30% wool, 40% rayon, 30% cotton). Jacket has quilted rayon lining, 4-gore front with zipper closing, L-shaped gores; flap pockets. Two-piece sleeve, set-in belt in back. Reinforced seams. Professional pants have stitched crease, full cotton kasha lining. Two vertical slash pockets, elastic foot straps. 4-button adjustable waistband. Smooth placket. For Sears convenient Easy Payment Plan see page 174C.

Sizes: 12, 14, 16, 18, 20. Please state size. Shipping weight, 5 pounds 5 ounces.

- ♦7 N 3810—Navy blue. \$15.98
- ♦7 N 3811—Ice (pale) blue. 15.98

\$15.98

Ski-Suit with Reversible Jacket combining all wool snow cloth (75% reused wool, 25% new wool) and contrasting water-repellent cotton poplin. Jacket has one side poplin, one side snow cloth which matches ski-pants. Patch pockets with flaps on poplin side; vertical slash pockets on wool side. 4-button adjustable waistband. Smooth placket. Pants are cotton kasha lined. See Sears General Catalog for other needs.

Sizes: 12, 14, 16, 18, 20. Please state size. Shipping weight, 5 pounds 5 ounces.

- ♦7 N 3807—Navy and tan \$15.98
- ♦7 N 3808—Brown and tan 15.98
- ♦7 N 3809—Green and tan 15.98



Transparent Rayon Velvet for Juniors

Date-glamour for juniors, in luscious transparent rayon velvet . . . to take her gaily on holiday rounds and make her the hit of the crowd. Give her the thrill of a lifetime by finding this enchanting dress under the tree on Christmas morning. And you'll notice, we've priced it at only

\$10⁹⁸

Sizes 9 to 17

Ermine tails tied in small bows are placed on the heart-shaped neckline where they do the most for enchantment. The bodice is snug-fitting and cut to a point to show off the lines of your nicely curved figure. Notice how daintily the short cap sleeves are shirred. Two slash pockets add to the softly gathered skirt front; gored back. Narrow, self half-belt buckles in back to nip in your waist. You'll love the shimmering glow of its soft transparent rayon velvet. Sheer, feminine loveliness that will live up to your biggest expectations on your most memory-making dates. Dry cleanable. Side placket. *Sizes: 9, 11, 13, 15, 17; see size scale below. Please state size.* Shipping weight, 1 pound 8 ounces.
 *31 N 5350-Black \$10.98

Size Scale for Juniors

Order Size	9	11	13	15	17
If hips are . . .	33	34½	36	37½	39 inches
If waist is . . .	23½	24½	26	27½	29 inches
If bust is . . .	30½	32	33½	35	36½ inches
Dress length . .	39½	40½	41	41½	42 inches

Catalog numbers marked * shipped from Kansas City. Order, pay postage from Sears nearest mail order house. Why not use Sears Easy Terms. See page 174C.



Make her dreams come true with a . . .

Fine Fur Coat from Sears-Roebuck

Every woman dreams of owning furs . . . loves their richness and warm beauty, their season after season smartness. You give her all this and much more, when her coat wears the Kerrybrooke label—for then yours is a gift of long-term wear and lasting loveliness. Sears furs are expertly chosen for every age and type . . . priced for every gift budget. You can buy any of these coats with confidence, give it with pride—for in back of the Kerrybrooke label is Sears-Roebuck's long-time reputation for reliability.

This is why Sears furs are such a wise investment

Prime Pelts, the cream of the catch, are selected by our experts whose knowledge guarantees fine dollar for dollar value at the price paid. Skins chosen are full-furred, supple, and strong, good in color, texture.

Superb Styling emphasizes what's wearable as well as what's new. Featured fashions are full-draped swaggers, wide-armhole sleeves, dramatic extended shoulders, turn-back cuffs, cardigan necklines, saddle shoulders.

Quality Craftsmanship and fine construction done to strict specification assure lasting wear:—superior blending, expert matching of skins, use of more skins per coat. Seams reinforced at points of strain, fine linings, interlinings, quality trimmings, good finish.

Misses' Size Scale

Order size:	10	12	14	16	18	20
If hips are:	34	35	36½	38	39½	41 in.
If waist is:	24	25½	27	28½	30	32 in.
If bust is:	31	32½	34	35½	37	39 in.

Women's Size Scale

Order size:	38	40	42	44
If hips are:	42½	44½	46½	48½ in.
If waist is:	34	36	38	40 in.
If bust is:	40	42	44	46 in.

Furs may be bought on Easy Terms . . . see Page 174C for details. See our big catalog for entire assortment of furs.



Fine Hollander-Dyed Marmot

\$202.80 cash (tax included)

Saddle Shoulder Tuxedo Coat gives her the luxury of glowing lustrous mink-brown marmot in superb Hollander-dyed skins and the easy grace of full, rippling lines. Unusual saddle detailing lends shoulder interest, full draped sleeves have turn-back cuffs. Deep armholes slide easily over suits. Converts to closed tiny rounded collar style. Rayon lined; interlined. *Sizes:* 10, 12, 14, 16, 18, 20 and 38, 40. *Please state size.* Shipping weight, 9 pounds.

★74 N 0324E—Mink-dyed Marmot (20% Fed. Ex. Tax included) \$70.00 down; \$13.00 monthly on Easy Terms Cash \$202.80



Young Ideas in good-looking, all-purpose Swaggers

\$190.80 cash tax included!

Natural Muskrat Box Coat . . . a favorite for wear, warmth . . . in silvery Southern Muskrat flanks, with pale tan overtones. Casual, young in spirit — has stunning tuxedo front, soft shirred yoke-effect shoulders, wide sleeves with turn-back cuffs. Convertible. Rayon lined; interlined. *Sizes:* 10, 12, 14, 16, 18, 20; size scale on page 122. *Please state size.* Shipping weight, 7 lbs.

♦74 N 0316E—Natural Muskrat
(20% Federal Excise Tax included) Cash \$190.80
\$65.50 down; \$12.00 monthly on Easy Terms

\$130.80 cash tax included!

Beaver-dyed Mouton Lamb Tuxedo, young and dashing, this coat can really take wear. She'll toss it over suits or wear it closed . . . and prize its rugged warmth. Deep-textured, dark silvery brown lambskin processed to resemble expensive sheared beaver. Wide sleeves with deep armholes, stunning wide cuffs. Rayon lined; interlined. Sleeve windshields. *Sizes:* 10, 12, 14, 16, 18, 20; size scale, page 122. *Please state size.* Shipping weight, 9 lbs.

♦74 N 0369E—Beaver-dyed Mouton Lamb. (20% Fed. Ex. Tax included). \$45.00 down; \$9.00 monthly on easy Terms. Cash \$130.80

Catalog numbers marked ♦ shipped from Philadelphia. Order and pay postage from Sears nearest mail order house.



* * * * * **Select from 2 qualities . . Sable-dyed Coney** * * * * *

Good Quality **\$70.80**

Better Quality **\$94.80** (tax included)

Box Coat with Turn-Back Cuffs, in brown sable-dyed coney, practical for general wear. Smartly simple, with an attractive plain shoulder, wide turn-back cuffs. Small rounded collar can be buttoned high, too. Rayon lined; interlined. *Sizes:* 16, 18, 20 and 38, 40, 42, 44; see scale on page 122. *Please state size.* Shipping weight, each, 8 lbs.

Good Quality Coney—Prime sturdy pelts, well blended.

♦74 N 0390E—Sable-dyed Coney. (20% Federal Excise Tax included.) \$24.50 down; \$5.00 monthly on Easy Terms. Cash \$70.80

Better Quality Coney—More densely furred, superior blending.

♦74 N 0393E—Sable-dyed Coney. (20% Federal Excise Tax included.) \$33.00 down; \$6.00 monthly on Easy Terms. Cash \$94.80

Good Quality **\$70.80**

Better Quality **\$94.80** (tax included)

Saddle Shoulder Swagger, a wise investment in excellent wear, snug warmth, smart style. Prime, full-furred coney skins dyed brown and striped like fabulous sable, are exceptionally durable. Tuxedo swagger has new saddle shoulders, turn-back cuffs. Converts to small, roll-collar style. Rayon lined; interlined. *Sizes:* 10, 12, 14, 16, 18, 20 and 38, 40; scale, page 122. *State size.* Shpg. wt., ca., 8 lbs.

Good Quality Coney—Prime sturdy pelts, well blended.

♦74 N 0338E—Sable-dyed Coney. (20% Federal Excise Tax included.) \$24.50 down; \$5.00 monthly on Easy Terms. Cash \$70.80

Better Quality Coney—More densely furred, superior blending.

♦74 N 0340E—Sable-dyed Coney. (20% Federal Excise Tax included.) \$33.00 down; \$6.00 monthly on Easy Terms. Cash \$94.80



Seal-dyed or Beaver-dyed Coney for wear, warmth

\$106.80 (tax included)

Dressmaker Detailed Box Coat. Prime pelts, full furred and of excellent quality that insures long wear, make these seal-and beaver-dyed coney a wise buy at Sears price. Full draped model, shirred shoulder yoke. Convertible collar; turn-back cuffs.

Sizes: 16, 18, 20 and 38, 40, 42, 44; see scale on page 122. *Please state size.* Shipping weight, each, 9 pounds.

♦74N0358E-Black. Seal-dyed Coney (20% Fed. Ex. Tax included)

♦74N0359E-Brown. Beaver-dyed Coney (20% Fed. Ex. Tax included)

\$37.00 Down; \$7.00 monthly on Easy Terms. . Each, cash \$106.80

\$106.80 (tax included)

Shawl Tuxedo With Saddle Shoulders, has the full draped lines that are so smart with all her outfits, whether tailored or dressy. Beautifully dyed seal-black or beaver-brown coney skins, supple and velvety soft, carefully selected for maximum wear and thick-piled warmth. Convertible collar. *Sizes:* 10, 12, 14, 16, 18, 20 and 38, 40; scale, page 122. *State size.* Shpg. wt., ea., 9 lbs.

♦ 74 N 0364E-Black. Seal-dyed. (20% Fed. Ex. Tax included)

♦ 74 N 0365E-Brown. Beaver-dyed. (20% Fed. Ex. Tax included)

\$37.00 down; \$7.00 monthly on Easy Terms. . Each, cash \$106.80

Catalog numbers marked ♦ shipped from Philadelphia. Order, pay postage from Sears nearest mail order house.



* * * * *

She'd love a Platinum-gray Dyed Coney

\$82.80 cash (tax included)

Fitted Princess Coat in Dyed Coney, a real fashion gift in the popular new shade, lovely platinum blue-gray, the talked about high fashion in furs. Gay, small-waisted, flaring silhouette is youthfully smart, shows off a beautifully worked border treatment, lavish rippling full sleeves. Pointed collar can button high, too. Rayon lined; interlined. *Sizes: 10, 12, 14, 16, 18, 20; scale, page 122. State size. Shpg. wt., 8 lbs.*

♦74N0348E-Platinum gray dyed Coney (20% Federal Ex. Tax incl.) \$28.50 down, \$6.00 monthly on Easy Terms. Each, cash \$82.80

\$82.80 cash (tax included)

Platinum Gray Dyed Coney, any girl would love these silky soft skins, so flattering in that new platinum blue-gray. Clever new "stroller" style with unusual border treatment, very wearable for all occasions, dressy or casual. Deep armhole sleeves. Simple, attractive shoulder. Length, abt. 36 in. Converts to closed, cardigan style. Rayon lined, interlined. *Sizes: 10, 12, 14, 16, 18, 20; scale, page 122. Please state size. Shipping weight, 7 lbs.*

♦74N0375E-Platinum gray dyed Coney (20% Federal Ex. Tax incl.) \$28.50 down; \$6.00 monthly on Easy Terms. Each, cash \$82.80

Catalog numbers marked ♦ shipped from Philadelphia. Order and pay postage from Sears nearest mail order house.



* * * **Fashion tells a new short story in Strollers** * * *

\$138.00 cash (tax included)

Leopard Stencilled Coney with Mouton Lamb trim, a stroller for the girl who loves drama! Sleek, smart, almost a twin for expensive leopard. Sharply patterned dark markings on creamy tan dyed coney. Lavish turn-back cuffs and tuxedo panels of rich dark brown mouton (lamb processed to resemble beaver). Converts to cardigan swagger. Length, about 36 in. Rayon lined; interlined. *Sizes:* 10, 12, 14, 16, 18, 20; *scale,* page 122. *State size.* Shpg. wt., 6 lbs.

♦74 N 0392E—Leopard-stencilled dyed Coney (20% Fed. Ex. Tax incl.) \$47.50 down; \$9.00 monthly on Easy Terms. Each, cash \$138.00

\$70.80 cash (tax included)

Lynx-dyed Alpine Lamb, so luxuriously soft and flattering, this versatile cardigan stroller will make a girl feel like a fashion magazine ad! Long-haired, silky white alpine lamb skins with the dark markings characteristic of costly lynx. Smart braided rayon cord accents the neckline attractively. Cord ties. Hooks in front. Length, about 36 inches. Rayon lined; interlined. *Sizes:* 10, 12, 14, 16, 18, 20; *scale,* page 122. *State size.* Shpg. wt., 6 lbs.

♦74 N 0391E—Lynx-dyed Alpine lamb (20% Federal Ex. Tax incl.) \$24.50 down; \$5.00 monthly on Easy Terms. Each, cash \$70.80

You can buy her furs on Easy Terms. See page 174C for full details.

Bright Gifts

Give her gayety with our new, bright-idea accessories . . . to make her feel dressed up all year round



Knit Dickey Hit

\$1.98

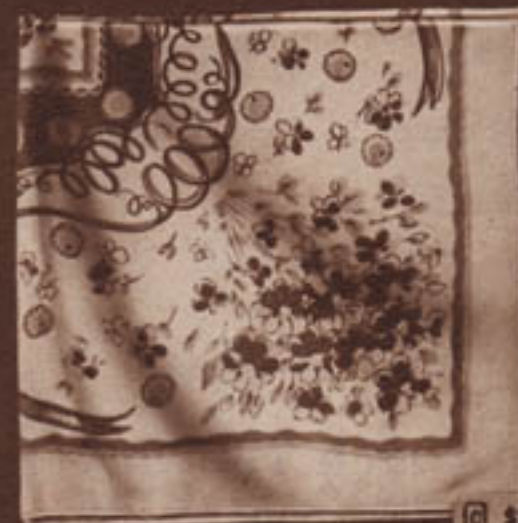
Glamour gift for your sweater girl, whether she's 16 or 60. This smart warm dickey knit of soft, fine 100% wool yarns gives all the blessed warmth of a sweater, but none of the bulk, under suit jackets. Ribbed knit stitch with snug fitting crew neck and waistband. Self ties at sides—easy to slip on and off. Fits all sizes up to 38-inch bust. Easy to hand wash in mild Lux suds. Shpg. wt., 5 oz.
 88 N 4190—White \$1.98
 88 N 4191—Light pink \$1.98
 88 N 4192—Light blue \$1.98



A \$1.57



B \$1.98



C \$2.89



D \$1.98



E \$1.98

Headliners to head your list

A Fetching Fascinator, lacy knit and lovely in luscious all wool yarns. Large, about 17x52 in., so she can drape it as a sash; or vestee, too. *Colors:* White, pale pink, pale blue, fuchsia (purplish red), aqua (lt. greenish) blue. *State color.*
 88 N 4433—Shipping weight, 5 oz. \$1.57

B White Wonder, versatile square she can twist and tie so many ways, for scarf or headkerchief. Flattering snow white 100% wool with self-fringed borders. Size including fringe, abt. 30 in. square.
 88 N 4494—White. Shpg. wt., 6 oz. \$1.98

C Flower Show, fashion flourish for a lucky lady's outfit. Soft white rayon crepe hand-screened with brilliant blossoms. *Size:* about 35 inches square. Hand washable; use Lux.
 88 N 4449—Shipping weight, 6 ounces \$2.89

It's a Scarf Season

D White Magic, she'll love the richness of its gleaming white rayon satin in a smart novelty pattern. She'll wear it several ways—twisted in a turban, tucked at the neck of her coat, as a smart sash. *Size:* about 20 x 44 inches.
 88 N 4495—Shpg. wt., 6 oz. . . \$1.98

E Flowers for Madame—and what could be more flattering than to give them on a scarf. Smooth, fine rayon crepe brightly printed on white ground . . . a wonderful accent for dark dresses and equally exciting under a fur coat . . . or to wear as a sash or turban, too. *Size:* abt. 18x42 in.
 88 N 4498—Shpg. wt., 5 oz. . \$1.98

Gowns and Bed Jackets

Glamorously styled . . .

Look pretty-as-a-picture

Please her this Christmas with a dainty gift gown or bed jacket selected from these delightfully feminine styles. All fashioned of soft, lovely fabrics in gay floral prints or plain colors, and all styled for beauty plus fine fit.

You can afford our loveliest lingerie because it's all available on Sears Easy Terms . . . see page 174C for more detailed information.

A Quilted Rayon Crepe Bed Jacket has softly gathered shoulders and sleeve head for ample fit. Self material lining and off center bow tie . . . closes with loop. Long sleeves—roomy pocket. Sizes: Small (32-36), Medium (38-40), Large (42-46 in.). State bust size. Shpg. wt., 13 oz. 38 N 2006—Tearose (creamy pink) . . . **\$4.38**

B Floral Print Bed Jacket of rayon crepe. Self fabric ruffle around collar, front and bottom. Pretty bow tie. Long sleeves, shirred shoulders and cuffs. Hand washable in gentle Lux suds. Shipping weight, 8 ounces. Sizes: Small (32-34), Medium (36-38), Large (40-42 in.). Please state bust size. 38N2025—Floral print on blue ground
38N2026—Floral print on white ground
Each **\$2.69**

C Dainty Cotton Eyelet Embroidery at midriff and bodice top trims this bias-cut rayon crepe gown. Surplice back. Length, 54 inches. Hand washable in gentle Lux. Shpg. wt., 10 oz. Sizes: 34, 36, 38, 40-in. bust. Please state bust size. 38 N 1435—Tearose (creamy pink).
38 N 1436—White Each **\$3.29**

D Rayon Satin Gown with sweetheart neck. Midriff style—bias cut for smooth, slender lines. Lace trimmed bodice and V-back. Length, 54 in. Hand washable. Shpg. wt., 12 ounces. Sizes: 34, 36, 38, 40-in. bust. Please state bust size. 38 N 1437—Tearose (creamy pink)
38 N 1438—Blue Each **\$2.98**

E Multi-filament Rayon Crepe Gown in smart midriff style. Lovely, hand washable fabric. Demurely rounded neckline. Cotton eyelet embroidery around bodice top and front of straps. Surplice back. Bias cut. Length, 54 inches. Shipping weight, 13 ounces. Sizes: 32, 34, 36, 38, 40-in. bust. State bust size. 38 N 1439—Tearose (creamy pink)
38 N 1440—Blue Each **\$3.29**

F Ruffle Trimmed Print rayon crepe gown, midriff style. Low cut back, wide straps. Bias cut. Lgth., 54 in. Hand washable in Lux . . . helps guard pretty colors. Shpg. wt., 14 oz. Sizes: 32, 34, 36, 38, 40-in. bust. Please state bust size. 38 N 1441—Tearose (creamy pink) ground
38 N 1442—Blue ground
38 N 1443—White ground Each **\$3.54**

G Printed Rayon Crepe V-back gown. Wide cotton eyelet embroidery trims the midriff, bodice and shoulder straps. Bias cut for graceful lines. Length, 54 in. Hand washable. We recommend gentle LUX care. Shpg. wt., 13 oz. Sizes: 32, 34, 36, 38, 40-in. bust. State bust size. 38 N 1444—Pale pink ground.
38 N 1445—Blue ground
38 N 1446—White ground Each **\$3.98**

Measure for Gowns and Bed Jackets around fullest part of bust. Order bust size nearest measurement taken.



A Quilted Rayon Crepe Bed Jacket **\$4.38** **B** Print Bed Jacket **\$2.69** **C** Eyelet Trimmed Gown **\$3.29**



D Rayon Satin Gown... \$2.98

E Rayon Crepe Gown... \$3.29

F Ruffle Trimmed Print... \$3.54

G Printed Rayon Crepe... \$3.98

We recommend hand washing in LUX for your Bod Jackets and Gowns . . . For quilted styles we recommend dry cleaning.

**For Christmas delight
It's Tailored Pajamas . .
Lace trimmed gift Slips**

For the gift scoop of the holiday season, give her colorful pajamas or a glamorous slip. They're practical yet beautiful gift items that are sure to please.

The pajamas are fashioned of soft rayon crepe in smart-to-sleep-in styles. Trousers are cut like slacks; extra-roomy tops can be worn either in or out. The slips are beautifully tailored to fit correctly; exquisitely trimmed with frothy lace to add feminine loveliness.

A Rayon Crepe Jamarette—our deluxe quality man-tailored pajama with rip-proof seams and roomy, well-cut trousers. Crisp piping on collar, coat front and pocket. Fresh water pearl buttons. Short sleeves. Adjustable waistband. Washable. Shipping weight, 15 ounces.

Sizes: 32, 34, 36, 38, 40-in. bust. State bust size.
38 N 1611—Rose
38 N 1612—Medium blue. Each **\$3.36**

B Gay Printed Rayon Crepe Pajama with convertible notched collar, short sleeves, breast pocket. 3 plastic buttons. Adjustable, fitted waistband. Shipping weight, 13 oz.

Sizes: 32, 34, 36, 38, 40-in. bust. State bust size.
38 N 1606—Tearose (creamy pink) ground
38 N 1607—Light blue ground
38 N 1608—White ground. Each **\$3.83**

C "Crown Tested" Spun Rayon Slip in the new Fuji cloth that's tops for washability. Sweetheart bodice is cotton lace trimmed. Double stitched, rip-proof seams. Bias cut. Plain V-back. Double needle hem. Adjustable straps. Length, 42 in. Shpg. wt., 10 oz.

Sizes: 32, 34, 36, 38, 40-in. bust. State bust size.
38 N 3029—Tearose. **\$1.98**

D Midriff Style Slip, bias cut, in shimmering, multi-filament rayon satin. Bodice is frosted with luxurious cotton lace. Double stitched, rip-proof seams. Plain V-back. Double needle hem. Adjustable straps. Length, 42 inches.

Sizes: 32, 34, 36, 38, 40, 42, 44-inch bust. Please state bust size. Shipping weight, 10 oz.
38 N 3027—Tearose
38 N 3028—White. Each **\$1.99**

E Lustrous Rayon Satin Slip with a heavenly deep cotton lace yoke. Graceful 4 gore bias cut skirt. Plain V-back. Double stitched, rip-proof seams. Double needle hem. Adjustable shoulder straps. Length, 42 inches.

Sizes: 32, 34, 36, 38, 40, 42, 44-inch bust. Please state bust size. Shipping weight, 10 oz.
38 N 3025—Tearose
38 N 3026—White. Each **\$1.99**

F Rich Alencon-Type Lace accents this bias cut slip of soft, multi-filament rayon crepe. Matching 4-in. cotton lace on bodice, straight back and around bottom. Sweetheart neck. Double stitched, rip-proof seams. Adjustable straps. Length, 42 inches.

Sizes: 32, 34, 36, 38, 40-inch bust. Please state bust size. Shipping weight, 10 ounces.
38 N 3030—Tearose. **\$3.99**

Add Pajamas and Slips to your Easy Terms Order.
For details, see page 174C.



A Rayon Crepe Jamarette. . . . **\$3.36**

B Printed Rayon Crepe Pajama **\$3.83**

How to measure for Women's Pajamas: Measure bust by placing tape around fullest part. Order bust size nearest measurement taken.

Bust size: 32|34|36|38|40
Regular length trousers: 40|40|40|41|41 in.



C "Crown Tested" Spun Rayon. . \$1.98

D Midriff Style Slip. . \$1.99

E Lustrous Rayon Satin. . \$1.99

F Alencon Type Lace Trim. . \$3.99

Measure around fullest part of bust. Measure hips; if hips measure more than 4 in. larger than bust, order next larger bust size x SEARS-ROEBUCK . . PAGE 141



A Rayon Brunch Coat \$4.98

B Striped floral print \$2.98



C

D

Gay Brunch Coats, Aprons

A Fine Quality Rayon floral print with ric-rac trim. Makes an attractive, useful gift. Hand wash separately. Sizes: 12, 14, 16, 18, 20. State size. Shpg. wt., 1 lb.
 ♦ 27 N 9172—Lt. blue ground
 ♦ 27 N 9173—Rose grd. \$4.98

B Softly styled waist has gathers at yoke, neat collar. Set-in front waistband. Floral striped cotton. Wash-fast. Sizes: 12, 14, 16, 18, 20. State size. Shpg. wt. 1 lb.
 ♦ 27 N 8138—Med. blue and white floral stripe. . . \$2.98

C Cotton floral print bib-top apron brightened all-round with contrasting color binding. Handy cover-up for all household duties. Washable. One size fits up to 20. Shpg. wt., 8 oz.
 72 N 1706—Asst. prints. . . 89c

D Bib-top apron with cotton net bib, heart-shaped pockets is gay and dressy. Floral print cotton. Washable. One size fits up to 20. Shpg. wt., 8 oz.
 72 N 1708—Light ground prints. Each \$1.98

Seersucker

\$5.79

Cotton seersucker housecoat . . an ideal no-iron time saver makes an ideal gift for Christmas. Looped rayon cording adds a feminine note to wide revers, from waist to hem on pocket and short sleeves. Two white buttons in front set off waist nipped in by back-tie belt. Cherry print. Washable. Sizes: 12, 14, 16, 18, 20. State size. Shpg. wt., 1 lb. 10 oz.
 ♦ 27 N 9168—Maize ground.
 ♦ 27 N 9169—Lt. blue ground.
 ♦ 27 N 9170—Rose ground. Ea. \$5.79

Rayon-and-Aralac

\$5.79

Wrap-around robe has a flattering roll collar trimmed with contrasting edging that also outlines the front; and the handy square pocket. Wide front overlap on skirt; inside tie. Loose self belt. 75% spun rayon, 25% aralac (man-made fiber) woven into a warm flannel-type fabric. Dry clean. Sizes: 12, 14, 16, 18, 20. Please state size. Shpg. wt., 3 lbs.
 ♦ 27 N 9114—Red with blue edging
 ♦ 27 N 9115—Blue with red edging
 Each \$5.79



Her favorite gift . . . a beautiful Robe or Housecoat

Here they are . . . a wonderful choice of fashion's newest beauties . . . bewitchingly feminine or handsomely tailored in quality fabrics . . . to make a joyous Christmas for that special person or for your own use in leisure moments.

\$9.98

Cascading ruffles outlined with rayon cord create a picturesque effect for floral print rayon housecoat. Front gathered skirt topped by fitted bodice; back tie belt. Dry cleanable. *Sizes:* 12, 14, 16, 18, 20. *State size.* Shpg. wt., 1 lb. 10 oz.

- ◆27 N 9164—White ground \$9.98
- ◆27 N 9165—Light blue ground \$9.98
- ◆27 N 9166—Light pink ground \$9.98

\$9.98

70% rayon, 30% aralac (man-made fiber) woven into a soft, full texture for warmth in a luxurious style. Scroll embroidery points up collar, tapering revers, square skirt pocket and cuffs. Self tie belt. Dry clean. *Sizes:* 12, 14, 16, 18, 20. *State size.* Shipping wt., 3 lbs.

- ◆27N9112—Med. blue, red embroidery \$9.98
- ◆27N9113—Bright red, blue embroidery \$9.98

All wool **\$11.98**

Reused wool, rayon, cotton **\$6.69**

100% wool flannel robe. White piping. Dry clean. *Sizes:* 12, 14, 16, 18, 20; also 42. *State size.* Shpg. wt., each, 2 lbs. 8 oz.

- ◆27 N 9110—Fuchsia (purplish red) \$11.98
- ◆27 N 9111—Lt. navy blue \$11.98
- 50% reused wool, 30% cotton, 20% rayon, same style, no tassel. *Sizes:* 12, 14, 16, 18, 20.
- ◆27 N 9140—Wine red, white piping \$6.69
- ◆27 N 9141—Navy blue, white piping \$6.69

★ ★ **Wool-and-rabbits' hair** ★ ★

Jersey Torso Blouses

- make attractive gifts to give a pretty girl
- because they cling becomingly to the figure,
- because they're gayly colorful, snug, warm

Favorite blouse of the season is the one of wool and rabbits' hair jersey . . . because it is snug, bright and warm . . . because it has the fashionable sweater look, clings becomingly to the figure . . . makes a perfect background for costume jewelry. Torso type blouses are dramatic when worn with wool skirts. They make the most attractive costumes worn with plaids that pick up and repeat the color of the blouse. Tuck-in blouses, close-fitting, darted, are perfect with suits, skirts—trim and neat under jackets.

\$3.98

- A** Round neck wool and rabbits' hair jersey blouse (75% wool, 25% rabbits' hair) with soft gathers in front, $\frac{3}{4}$ sleeves pleated smoothly into padded shoulders; slashed opening at back of neck, with button closing. (Pearls not included). Dry cleanable. *Sizes:* 12, 14, 16, 18. *Please state size.* Shipping weight, 12 oz.
- | | |
|----------------------|-----------------------|
| ◆7 N 3601—Bright red | ◆7 N 3602—Yellow |
| ◆7 N 3603—Light blue | Each \$3.98 |

Descriptions of blouses illustrated on opposite page.

\$4.98

- B** Drawstring neckline blouse of 75% wool and 25% rabbits' hair, the neckline finished with self-facing and self-jersey drawstring and tassel at front, darts in front and back for form fit. Slight shirring above hem of $\frac{3}{4}$ sleeves; shoulder pads for broad-shouldered look. Dry cleanable. *Sizes:* 12, 14, 16, 18, 20. *Please state size.* Shipping weight, 12 oz.
- | | |
|---------------------|------------------------|
| ◆7 N 3607—Yellow | ◆7 N 3608—Bright green |
| ◆7 N 3609—Aqua blue | Each \$4.98 |

\$3.98

- C** Torso type wool-and-rabbits' hair jersey blouse (75% wool, 25% rabbits' hair), in bright colors. Trim round neck with self bow, soft gathers at front yoke and each side of front waistline for shaping. $\frac{3}{4}$ sleeves ease into padded shoulders with 2 tiny pleats for fullness. Dry cleanable. *Sizes:* 12, 14, 16, 18. *Please state size.* Shipping weight, 12 oz.
- | | |
|------------------------|-----------------------|
| ◆7 N 3604—Bright green | ◆7 N 3605—Yellow |
| ◆7 N 3606—Light blue | Each \$3.98 |



A Round Neck Style Jersey Blouse in bright red, yellow or light blue **\$3.98** each

Catalog numbers marked ◆ shipped from Kansas City. Order and pay postage from Sears nearest mail order house.



B Drawstring Neckline Jersey Blouse in yellow, bright green or aqua blue **\$4.98** each

C Torso Type Jersey Blouse in bright green, yellow or light blue **\$3.98** each

Why not add blouses to your Easy Payment order? See page 174C for details.



A \$1.79 set

B \$4.44 set



G 87c

H 95c



C \$1.14

D \$1.89

E \$1.14

F \$1.89



J \$2.39

K \$1.89

L \$1.38

★ ★ ★ Sugar'n Spice for the best little girl you know ★ ★ ★

A **Stitched Set**, felt cloth (70% wool, 30% cotton). Hat fits all sizes. Bag ties shut. *Size:* abt. 8 x 8 3/4 in. *Shpg. wt., set,* 6 oz. 20c Fed. Ex. Tax on bag included.
 88 N 1619—Bright red Set \$1.79
 88 N 1620—Bright green Set \$1.79
 88 N 1621—Dark brown Set \$1.79
 88 N 1622—Navy blue Set \$1.79

C **Twinkle Bag**, for tiny tots. Artificial leather gathered in front. Gay colored nailheads trim flap. Snap fastener. Fabric lined, mirror. *Size:* abt. 7 x 4 3/4 in. *Shpg. wt.,* 4 oz. 20% Fed. Ex. Tax included.
 88 N 1616E—Bright red \$1.14
 88 N 1617E—Navy blue \$1.14
 88 N 1618E—Bright green \$1.14

E **Young Set Shoulder Bag**, Felt cloth (70% wool, 30% cotton), hand appliqued. Snap fastener. Mirror. *Size:* abt. 6 3/4 x 5 3/4 in. *Shpg. wt.,* 3 oz. 20% Fed. Ex. Tax included.
 88 N 1612E—Bright red \$1.14
 88 N 1613E—Bright green \$1.14
 88 N 1614E—Navy blue \$1.14
 88 N 1615E—Dark brown \$1.14

B **Daisy Set**, flower applique and bright nailheads on felt cloth (70% wool, 30% cotton). Beret fits all sizes. Drum bag has zip top. Fabric lined. *Size:* abt. 7 1/2 in. diameter. *Shpg. wt., set,* 10 oz. Price includes 58c Federal Excise Tax on bag.
 88 N 1688—Bright red Set \$4.44
 88 N 1689—Dark brown Set \$4.44

D **Pet Pouch**, a grown-up frame bag Sister will love. Artificial leather, shirred in front. Prystal clasp. Fabric lined, mirror. *Size:* about 8 1/2 x 5 1/2 inches. *Shpg. wt.,* 8 oz. 20% Fed. Ex. Tax included.
 88 N 1685E—Bright red \$1.89
 88 N 1686E—Navy blue \$1.89
 88 N 1687E—Dark brown \$1.89

F **"Tailor-Maid" Shoulder Bag** in artificial leather, stitched edges. Snap fastener. Fabric lined, mirror. *Size:* abt. 9 1/2 x 6 in. *Shpg. wt.,* 6 oz. 20% Fed. Ex. Tax incl.
 88 N 1608E—Bright red \$1.89
 88 N 1609E—Dark brown \$1.89
 88 N 1610E—Navy blue \$1.89
 88 N 1611E—Bright green \$1.89

G **Sweetheart Suspenders**, Gay red felt (54% cotton, 46% wool). Center panel of decorated cotton tape. Metal clip-on ends. Adjustable. *Shpg. wt.,* 4 oz.
 88 N 4444 Pr. 87c

H **Fairy Tale Scarf**, finer rayon crepe, hand screened with story characters. *Size:* abt. 12 x 36 in. *Shpg. wt.,* 3 oz.
 88 N 4476—Bright red 95c
 88 N 4477—Bright green 95c
 88 N 4478—Medium blue 95c
 88 N 4479—Yellow 95c

Size Scale for Mittens—J, K, L
 Place tape around hand, over knuckles, excluding thumb. Close fist; measure. Number of inches is size.

<i>If hand measures</i>	<i>Order size</i>
5-6 inches	Small
6-7 inches	Medium
7-8 inches	Large

J **White Bunny Fur**, soft rabbit fur backs and cuffs, pig-grained cape (domestic) leather palm. Cotton fleece lining. *Sizes:* Med., Large. *State size.* *Shpg. wt.,* 6 oz. 20% Fed. Ex. Tax included.
 88 N 5080E—White with bright red . . \$2.39
 88 N 5081E—White with bright green . \$2.39

K **Bunny Fur back with Wool Palm** mitten, cozy, cute. Lined with cotton fleece. *Size:* Small. See size scale at left. Shipping weight, 6 ounces. 20% Federal Excise Tax included.
 88 N 5075E—White with bright red . . \$1.89
 88 N 5076E—White with bright green . \$1.89

L **Fluffy Lambkin** (processed to look like fur) backs. Domestic cape leather palms, pig-grained textured. Warmly lined; rib-knit wrists. *Sizes:* Small, Med., Large. See size scale at left. *State size.* Shipping weight, 6 ounces.
 88 N 5090—Bright red \$1.38
 88 N 5091—Bright green \$1.38



A \$2.98 set

B \$6.85 set



E \$2.98 set

F \$3.31 set



C \$2.98 set

D \$3.98 set



G \$1.69 set

H \$1.45 set

★ ★ ★ ★ She'll "ooh!" and "ah!" over a gay Matched Set ★ ★ ★ ★

A Dolly Muff Set, now your little one can take her doll along everywhere she goes. Soft, rich white rayon plush cloth that looks like fur, with multi-color all-over embroidery. Muff is about 6½x7 inches, swings gaily from shoulder strap of red felt cloth (70% wool, 30% cotton). Bonnet ties under chin, fits all headsizes. Shpg. wt., set, 1 lb. 6 oz. ♦78 N 800—White, red trim. Set \$2.98

B Bunny Fur Set, so yummy soft and luxurious looking, she'll feel proud as a princess. Snowy warm rabbit fur hood, lined with pretty rayon faille. Grosgrain ties. Fits all sizes. Matching muff is about 7½ x 7½ inches, has cute Scotty head with grosgrain bow. Cord shoulder strap. Packed in its own attractive gift box. Shipping weight, set, 1 pound 4 ounces. Price of set includes 20% Federal Excise Tax. ♦78 N 875E—White, red trim. Set \$6.85

C Corduroy Bonnet Set, perfect for pint-size fashion plates. Cunning poke is shirred under brim, has fluffy feather and grosgrain ties. Fits all headsizes. Shirred barrel muff, about 7x6½ in., has grosgrain carrying loop. Colors: Bright red, deep blue, dark brown, dark green, wine red. State color. ♦78 N 815—Hat only. Wt., 15 oz. \$1.89 ♦78 N 820—Hat and muff. Shipping weight, set, 1 lb. 15 oz. Set \$2.98

D Fur Trimmed Bonnet Set, will be her pride and joy. Fluffy white rabbit fur banding on soft felt cloth (70% wool, 30% cotton). Hat and muff are trimmed in front. Hat fits all sizes; muff is about 9½x6½ in. Colors: Bright red, bright green, wine red. State color. ♦78 N 835—Hat only. Shipping weight, 1 pound 2 ounces. \$1.98 ♦78 N 840—Hat and muff. Shipping weight, set, 1 lb. 10 oz. Set \$3.98

E Posy Fillbox Set, every girl wants one. Soft felt cloth (70% wool, 30% cotton), with contrasting applique and stitching. Hat fits all sizes. Shoulder strap bag, about 10½x7 inches. Colors: Bright red, bright green, dark brown, navy blue. Please state color. ♦78 N 825—Hat only. Shipping weight, 9 ounces. \$1.09 ♦78 N 830—Hat and bag. Shipping weight, set, 1 lb. 2 oz. Price includes 31c Fed. Ex. Tax on bag. Set \$2.98

G Fringed Parka Set, so cute all her classmates will want one like it. Downy soft brushed fabric (73% rayon, 27% cotton) with front trim of cotton fringe that frames the face flatteringly. Parka and mittens fit all sizes. Colors: White, bright red, dark green, dark brown. Please state color. ♦78 N 845—Hood only. Shpg. wt., 3 oz. 75c ♦78 N 850—Hood and mittens. Shipping weight, set, 13 ounces. Set \$1.69

F Scotch Tam Set, jaunty and gay, a fashion-first gift in smooth felt cloth (70% wool, 30% cotton). Novel multi-color all-over embroidery. Tam fits all headsizes. Drawstring bag is about 10 x 7½ in. Colors: Bright red, bright green, deep blue. State color. ♦78 N 805—Hat only. Shipping weight, 1 pound 1 ounce. \$1.69 ♦78 N 810—Hat and bag. Shipping weight, set, 1 lb. 3 oz. Price includes 27c Fed. Ex. Tax on bag. Set \$3.31

H Pompon Hood Set, a practical present that will keep her snug as a bunny. Novelty terry-like knit cotton, in a close fitting hood spiced with multi-color bands and pompons. Parka and mittens fit all sizes. Colors: Bright red, dark green, dark brown. State color. ♦78 N 855—Hood only. Shipping weight, 3 ounces. 79c ♦78 N 860—Hood and mittens. Shipping weight, set, 5 ounces. Set \$1.45

New Frocks

bring her Christmas cheer...
big and little sister will
love these gay, new styles

Sizes 3 to 6x



A Dirndl \$1.98 **B** Bow Print \$1.98 **C** Sanforized \$2.98 **D** Sanforized \$2.98

A Striped Cotton and Rayon Dirndl, darling fashion, with white pique collar, scalloped applique. Puffed sleeves. Pouch pockets on full skirt. Tie-back sashes. Washable. *Sizes:* 3, 4, 5, 6, 6x. *State size.* Shpg. wt., 9 oz.
29 N 1275-Aqua blue . . . \$1.98
29 N 1276-Light rose . . . \$1.98

B Bow-knot Cotton and Rayon Print with dainty sheer cotton inset at neckline, top of puffed pockets. Rayon braid trim. Full gathered dirndl skirt. Hand wash; use Lux. *Sizes:* 3, 4, 5, 6, 6x. *State size.* Shpg. wt., 9 oz.
29 N 1277-Medium blue . . \$1.98
29 N 1278-Bright red . . . \$1.98

C Dainty Floral Print in fine Sanforized cotton (max. shrinkage, 1%). Neat tucks on bodice. Pique collar edged with dainty cotton lace. Lace trimmed pouch pockets. Full skirt; sash. Wash separately. *Sizes:* 3, 4, 5, 6, 6x. *State size.* Shpg. wt., 9 oz.
29 N 1279-Yellow \$2.98
29 N 1280-Aqua blue . . . \$2.98

D Sanforized Cotton . . (max. shrinkage, 1%). Very fine quality in pretty floral print princess style, has white pique collar and panel, cotton lace insert. Pleats on bodice front. Full skirt. Wash separately. *Sizes:* 3, 4, 5, 6, 6x. *State size.* Shpg. wt., 9 oz.
29 N 1281-Medium blue . . \$2.98
29 N 1282-Rose \$2.98

Sizes 7 to 14



E Stripes \$1.79 **F** Checks \$1.79 **G** Bib-style \$2.98 **H** Lacy Beauty \$2.98

E Girls' Striped Cotton . . handsome style, with wide collar on the square neckline. Button trim. Patch pockets on full dirndl skirt. Sash ties in back. Washable. *Sizes:* 7, 8, 10, 12, 14. *State size.* Shpg. wt., 10 oz.
98 N 2081-Med. blue stripe \$1.79
98 N 2082-Red stripe . . . \$1.79

F Checked Cotton Dirndl has a saucy square neckline that ties at the side with a bow. Ruffled over the shoulders, edging patch pockets. Full skirt. Tie-back sashes. Washable. *Sizes:* 7, 8, 10, 12, 14. *State size.* Shpg. wt., 10 oz.
98 N 2083-Med. red check \$1.79
98 N 2084-Med. blue check \$1.79

G Bib-effect Dress in fine rayon and cotton fabric. Bib-shaped yoke and patch pockets edged with cotton lace. Bow trim. Tie-back sashes. Wash separately. *Sizes:* 7, 8, 10, 12, 14. *State size.* Shpg. wt., 10 oz.
98 N 2085-Royal (brt.) blue \$2.98
98 N 2086-Bright red . . . \$2.98

H Lace Trimmed Dress, in rayon and cotton. Peter Pan collar. Cotton lace edged yoke, peplum effect on dirndl skirt. Wash separately. *Sizes:* 7, 8, 10, 12, 14. *State size.* Shpg. wt., 10 oz.
98 N 2087-Bright red . . . \$2.98
98 N 2088-Royal (brt.) blue \$2.98



A Jerkin Suit \$3.98

B Cotton Corduroy Skirt \$1.59

C Plaid Skirt \$1.98

D All Wool Skirt \$2.98



J



E Corduroy Jumper \$2.74

F Corduroy Jodhpurs \$2.98

G Overalls \$1.10

H Corduroy Overalls \$1.66



K



L

*** * Give a little girl Gay Separates for Christmas * ***

A Jerkin Suit in soft flannel of 15% new wool, 28% reprocessed wool, 22% reused wool, 35% rayon. Cute vest piped in bright red, embroidered. Pleated skirt; adjustable suspenders. *Sizes:* 3, 4, 5, 6, 6x. *State size.* Shipping weight, 10 ounces. 29 N 4000—Med. gray. \$3.98

C Gay Plaid Skirt, a jolly gift, is well-made with knife pleats all-around. In handsome, colorful plaid of 50% wool, 50% rayon. Adjustable suspenders. *Sizes:* 3, 4, 5, 6, 6x. *State size.* Shipping weight, 10 ounces. 29 N 4105—Colorful plaid. \$1.98

E Corduroy Jumper with pert butterfly shoulder ruffles. Set-in waist-band. Full dirndl skirt with ruffled pocket effect. Hand wash; use Lux. *Sizes:* 3, 4, 5, 6, 6x. *State size.* Shpg. wt., 14 oz. 29 N 4113—Bright red. 29 N 4114—Medium blue. Each \$2.74

G Sanforized Overalls, for Mother's little helper. Well made in sturdy tub cotton that will not shrink more than 1% . . . and wears marvelously. Built-up front, with button-on suspenders. Patch pocket. *Sizes:* 3, 4, 5, 6, 6x. *State size.* Shipping weight, 6 oz. 29 N 4201—Med. blue. \$1.10

J Short Sleeve Classic Shirt to wear with everything. Smartly tailored in fine quality cotton that washes and irons easily. Action gathered front yoke, neat patch pocket. Gathered short sleeves. *Little girl sizes:* 3, 4, 5, 6, 6x. *State size.* 29 N 4600—White. Shpg. wt., 5 oz. **75c**

B Cotton Corduroy Skirt, sweet little girl fashion with adjustable suspender straps . . . full gathered skirt. Fine textured washable corduroy. *Sizes:* 3, 4, 5, 6, 6x. *State size.* Shpg. wt., 7 oz. 29 N 4103—Bright red 29 N 4104—Royal (bright) blue Each \$1.59

D All Wool Skirt, a heart-warming present. Soft, sturdy, perfect texture for all around knife pleats. Button-on adjustable suspenders. *Sizes:* 3, 4, 5, 6, 6x. *State size.* Shipping weight, 10 ounces. 29 N 4109—Bright red 29 N 4110—Powder (light) blue Each \$2.98

F Smart Corduroy Jodhpurs, adjustable button-on suspenders. Two inside patch pockets. Pants have sturdy foot straps for fine fit. Hand washable. *Sizes:* 3, 4, 5, 6, 6x. *Please state size.* Shpg. wt., 14 oz. 29 N 4500—Dk brown \$2.98 29 N 4501—Dk green. \$2.98

H Fine Wale Corduroy Overalls, with lined bib top, adjustable suspenders as pictured without embroidery. Strongly stitched, bar-tacked seams. Hand wash separately. *Sizes:* 3, 4, 5, 6, 6x. *State size.* Shpg. wt., 10 oz. 29 N 9614—Navy blue \$1.66 29 N 9615—Wine-red \$1.66

K Drawstring Blouse, adorable long sleeve fashion with ruffles and embroidery at neck and cuffs. Red cord (remove when washing). Blouse in fine quality cotton . . . hand washable; use Lux. *Little girl sizes:* 3, 4, 5, 6, 6x. *State size.* 29 N 4603—White. Shpg. wt., 5 oz. **\$1.45**

L Fine Rayon Blouse, pretty dress-up Peter Pan style with self ruffled collar and front . . . neat tucks. Puffed sleeve with cuff. Blouse comes up sparkling when you hand wash it in Lux. *Sizes:* 3, 4, 5, 6, 6x. *State size.* Shipping weight, 5 oz. 29 N 4604—White. **\$1.98**



★ ★ ★ ★ ★
Welcomed Gifts for girls, sizes 7 to 16

\$1.98

Girls' Plaid Raincape, in a bright red and blue pattern to pep up any rainy day. Sturdy, long-wearing rubberized cotton, treated to be water repellent. Cape is full cut to fit comfortably over coats and suits. Smart attached hood which ties at neckline. Front button opening. Convenient deep, action-free arm slots. *Girls' sizes: 7, 8, 10, 12, 14. Please state size.* Shipping weight, 1 pound 4 ounces.
 ♦77 N 6800 — Bright red and blue plaid... **\$1.98**

\$2.98

Man-tailored Slacks. Santa himself couldn't make a better suggestion for the Teen-age girl on your list. Slacks are beautifully made in soft part wool flannel of 50% reused wool, 30% cotton, 20% rayon. Back-vent for easy altering waist-band, side pocket, sturdily lined. Bar-tacking, double-stitched at points of strain. All seams pinked or overcast. *Sizes: 10, 12, 14, 16. State size.* Shpg. wt., 1 lb.
 ♦77 N 8604 — Med. gray
 ♦77 N 8605 — Dark brown
 Each **\$2.98**

\$10.36

A Teen All Wool Pea Jacket in soft 35% new wool, 65% reused wool. Wide collar, 2 slash pockets, 2 flap pockets below. Warmly cotton flannel lined. *Sizes: 10, 12, 14, 16. State size.* Shpg. wt., 3 lbs. 5 oz.
 ♦77 N 6895 — Navy blue... **\$10.36**

\$8.69

B Teen Loafer Jacket with blue all wool monotone effect front of 80% new wool, 20% reprocessed wool. Collar, sleeves, back in blue herringbone tweed of 25% reprocessed wool, 25% reused wool, 50% rayon. Rayon lined. *Sizes: 10, 12, 14, 16. State size.* Shpg. wt., 2 lbs.
 ♦77 N 6897 — Medium blue... **\$8.69**

\$10.36

C Teen All Wool Mackinaw Jacket in gay plaid of 30% new wool, 10% reprocessed wool, 60% reused wool. Cotton flannel lined. *Sizes: 10, 12, 14, 16. State size.* Shpg. wt., 3 lbs. 5 oz.
 ♦77 N 6896 — Blue plaid... **\$10.36**
 ♦77 N 6898 — Wine red plaid... **\$10.36**

\$1.98

D Striped Classic Shirt says a "Merry Christmas" for you. Smart long sleeve style, well tailored in hand washable cotton and rayon. Notched collar. Button cuffs. Patch pocket. *Sizes: 10, 12, 14, 16. State size.* Shipping weight, 9 ounces.
 ♦77 N 6702 — Red and white... **\$1.98**
 ♦77 N 6703 — Blue and white... **\$1.98**



* * * Merry Mixers to thrill girls, sizes 7 to 16 * * * *

\$8.98

A Girls' All Wool Pea Jacket, in warm melton of 35% new wool, 65% reused wool. Slash pockets. Cotton flannel lined. *Sizes:* 7, 8, 10, 12, 14. *State size.* Shpg. wt., 3 lbs. 10 oz. ♦77 N 6884—Navy blue \$8.98

\$10.60

B Capeskin Leather Jacket, with blouse-effect back. Slit pockets. Lined with cotton flannel. *Sizes:* 7, 8, 10, 12, 14, 16. *State size.* Shipping weight, each, 3 pounds. ♦77 N 6885—Luggage(dk.tan) \$10.60 Suede leather jacket, same style as above. See sizes above. *State size.* ♦77 N 6886—Luggage(dk.tan) \$10.60

\$2.98 *Skirt*

Colorful Plaid Skirt, (31% new wool, 14% reprocessed wool, 55% rayon). Two box pleats front, back. *Girls' sizes:* 7, 8, 10, 12, 14. *State size.* Shpg. wt., 1 lb. ♦77 N 6835—Colorful plaid \$2.98

Ruffled Drawstring Blouse in fine hand washable cotton. Remove red cord when washing. *Sizes:* 7, 8, 10, 12, 14. *State size.* Shpg. wt., 8 oz. 98 N 5703—White \$1.80

\$3.98 *Skirt*

All Wool Pleated Skirt—rich dressy fabric highlights the tailoring of all around stitched down knife pleats. *Girls' sizes:* 7, 8, 10, 12, 14. *State size.* Shpg. wt., 1 lb. ♦77 N 6838—Red \$3.98 ♦77 N 6839—Navy \$3.98

Pin-checked Bow Blouse, in hand washable rayon. Slit pocket. *Sizes:* 7, 8, 10, 12, 14. *State size.* Shpg. wt., 8 oz. 98 N 5706—Red and white checks . . . \$1.98 98 N 5707—Blue and white checks . . . \$1.98

\$3.79

Butterfly ruffle jumper, a darling gift from Santa. She'll love to wear it with tailored or ruffy blouse. Shirred ruffles over the shoulders and on full dirndl skirt. Set-in waist, one pocket. Built-up back. In soft rayon-and-aramac. (Blouse not included.) *Girls' sizes:* 7, 8, 10, 12, 14. *State size.* Shpg. wt., 1 lb. ♦77 N 6853—Lt. blue \$3.79 ♦77 N 6854—Lt. green \$3.79

\$7.98

The Lumber-Jack Suit, wonderful surprise for Christmas morning. Gay fashion for school or sports comes in a bright plaid of warm 31% new wool, 14% reprocessed wool, 55% rayon. Smart jacket buttons down the front, has flap pocket. Flap band at waist, button cuffs. Skirt is pleated front and back. *Sizes:* 7, 8, 10, 12, 14. *State size.* Shpg. wt., 1 lb. ♦77 N 6811—Red and green plaid. . . . \$7.98



For a lovelier you . . .
 . . . for gift giving
\$1.49 Each

Charmode "Starlight" Bras . . . famous for fit

In search of a gift idea? Give her a bra this Christmas. She's bound to be pleased with any of the glamourizing styles illustrated above. Choose the sheer cotton net or lace for "dress-up" occasions . . . the low-cut bra for low-neck fashions . . . the lustrous rayon and cotton for sturdier wear.

Rayon and cotton Bra

A For the Medium bust. A bra that's proved successful styling for most average figures. Achieves a smart, rounded uplift and a well accentuated line of separation for the Medium bust development. Will give long wear plus steady support. Made of sturdy rayon and cotton material that has a rich, lustrous appearance. Double, self-material shoulder straps are adjustable and forked in front for extra uplift. Hook and eye closing adjusts to fit-4-sizes. Pale flesh pink. Shipping weight, 3 ounces.
 Bust sizes: 32, 34, 36, 38 inches.
18 N 1084—State bust size. \$1.49

"Lo-kut" net Bra

B For Small to Medium bust. Smartly styled bra with deep "V" cut for low neck fashions. Designed for a pointed uplift. Daintily fagoted rayon center piece and darts for smart accentuation and separation. Fine, sheer cotton net keeps smooth lines because it's reinforced by self material lining. Gives firm, good support and is comfortably lightweight as well. Rayon satin shoulder straps are adjustable. Hook and eye back closing adjusts to fit-4-sizes. Pale flesh pink. Shipping weight, 3 ounces.
 Bust sizes: 32, 34, 36, 38 in.
18 N 1089—State bust size. \$1.49

Sheer cotton net Bra

C For Small to Medium bust. Cotton net bust-cups and back lined with self material. Reinforcing sateen at lower bust-cups and center. Adjustable rayon satin shoulder straps. Hook and eye back closing adjusts to fit-4-sizes. Pale flesh pink. Shpg. wt., 3 oz.
 Bust sizes: 32, 34, 36, 38 in.
18 N 1088—State bust size. \$1.49
Lace top Bra . . . same style, bust-cup type, color, sizes as above except made of pre-shrunk rayon, with cotton net lined lace upper bust-cups. Double, self-material straps. Shpg. wt., 3 oz.
18 N 1085—State bust size. \$1.24

Lace top glamour Bra

D For Medium to Large bust. Holds and molds the bust into well rounded lines, a semi-pointed uplift. Quality materials and excellent workmanship assure fine fit. Bra is pre-shrunk rayon and cotton with upper bust-cups of lovely cotton lace lined with cotton net. Reinforced with sateen. Dainty, center fagot stitching in lower bust-cups. Double, self-material shoulder straps are adjustable. Double hook and eye back closing adjusts to fit-4-sizes. Pale flesh pink. Shipping weight, 4 ounces.
 Bust sizes: 32, 34, 36, 38 in.
18 N 1080—State bust size. \$1.49



Charmode OUR OWN TRADE MARK all-elastic Panties and Girdles

CLEARANCE! Our famous all-elastic girdles at new low prices. See your big Fall Catalog and check these amazing reductions. Garments fit all hip figure types . . . Straight, Average and Full.

The biggest news in girdles!
Real, honest-to-goodness
All-elastic two-way stretch

Step-in style Panty or Girdle

A girdle with real stretch. Famous Neoprene synthetic elastic, knit with rayon and cotton threads, gives crosswise stretch for comfort and freedom plus smooth control. Easy step-in style . . . fits without a ripple. Pulls on and off in a jiffy. Nude (pale flesh pink).

To fit waists: 23, 24, 25, 26, 27, 28, 29, 30 in. *State waist and hip measure.* Shpg. wt., 10 oz.

The Girdle. Four garters.

18 N 1819—Medium length; about 15 inches, waist down **\$1.98**

The Panty Girdle. (Small view) Soft rayon and cotton jersey crotch. No garters.

18 N 1919—Medium length; about 15 inches, waist down **\$1.98**

Cordtex top Panty or Girdle

Patented non-roll top. Exclusive at Sears. Cotton ribbed Cordtex fabric at top of girdle keeps it in place; will not roll or cut in. Neoprene synthetic elastic, knit with rayon and cotton threads. Crosswise stretch assures firm support. Step-in style. Nude (pale flesh pink).

To fit waists: 23, 24, 25, 26, 27, 28, 29, 30 in. *State waist and hip measure.* Shpg. wt., 12 oz.

The Panty Girdle. Smooth fitting crotch of soft rayon jersey. Four detachable garters.

18 N 1920—Medium length; about 15 inches, waist down **\$2.98**

The Girdle. (Small view) Four garters.

18 N 1820—Medium length; about 15 inches, waist down **\$2.98**

Popular two-way stretch Girdle

A girdle with crosswise as well as lengthwise stretch. Helps to trim you, slim you. Gives you firm, well molded curves, smooths unruly bulges. Skillfully knit of fine quality rayon and cotton yarns with Neoprene synthetic elastic. **\$4.98**

Patented double knit top has lightweight, short bones between fabrics to keep garment from rolling over at waist. Self-edge knit bottom. Shaped for a better fit. Convenient step-in style. Four elastic garters for extra comfort when you sit or stoop. Nude (pale flesh pink).

To fit waists: 23, 24, 25, 26, 27, 28, 29, 30 in. *Please state waist and hip measure.* Shipping weight, 10 oz.

18 N 1839—Medium length: 14½ in., waist down. Stretches to 15½ in. **\$4.98**

How to order proper clothing size

Please measure carefully and be certain of right fit

FOR WOMEN



Measure Bust around fullest part. Do not let tape slide down shoulder blades in back. Measure over slip or lightweight dress.

Measure Waist around smallest part.

Measure Hips at side in line with hip bone (7 inches below natural waistline). This is an important measurement.

Measure Length straight down center back from collar line to desired length.

FOR LITTLE GIRLS

Small children grow so rapidly that it is important to check their size carefully each time you order.

Measure Length down center of back from base of neck to desired length.

Measure Chest close up under arms around fullest part of chest, folding tape snugly.

Measure Height without shoes. If measurements come between two sizes on scale below, order larger size.

Girl's Height in inches	Chest Measure in inches	Length of Dress in inches	Order Size
Under 31	20	16	1
32-34	21	17	2
35-37	22	18 1/2	3
38-40	23	20	4
41-43	24	22	5
44-46	24 1/2	24	6
48	25	25	6 1/2



FOR MEN



Measure Chest close up under arms, snug but not tight, with tape over shoulder blades at back. Measure with vest on for garments that are worn over vest.

Measure Waist just above hip bones at natural waistline. Remove belt.

Measure Inseam from close up in crotch to bottom of trousers at length desired, usually top of heels.

FOR BOYS

Don't guess a growing boy's size. Measure carefully and check with size scales below.

Boy's Height in inches	Chest Measure in inches	Waist Measure in inches	Inseam Measure in inches	Order Size
Under 34	21	21	21	2
34 to 36	22	22	22	3
37 to 39	23	22 1/2	23	4
40 to 41	24	23	24	5
42 to 44	24 1/2	23 1/2	24 1/2	6
45 to 46	25 1/2	24	25	7
47 to 49	26	24 1/2	26	8
50 to 51	26 1/2	25	27	9
52 to 53	27 1/2	25 1/2	28	10
54 to 55	28	26	29	11
56 to 57	29	26 1/2	29 1/2	12
58 to 59	29 1/2	27	30	13
60 to 61	30 1/2	27 1/2	31	14
62 to 63	31	28	32	15
64 to 65	32	28 1/2	33	16
65 1/2 to 66 1/2	33	29 1/2	34	17
67 to 68	34	31	35	18



3 ways to order your correct shoe size

1 Tell us your shoe size—length and width—if you know it.

For men and women only—not for children. (For children, use 4-point measuring system.) Make sure that shoes you order are sold in your particular size and width.

or 2 Give us all numbers and letters in your shoe

For men and women only—not for children. Just write on your order all the numbers and marks you find in the lining of a comfortable old shoe—whether you bought it at Sears or not—and your new Sears shoes will fit just as comfortably. Be sure to include any dashes that occur, as they sometimes indicate half sizes.

or 3 Use Sears Scientific 4-point measuring system



For men, women, older boys, girls and children—Take a piece of blank paper large enough to fit under your foot . . . an ordinary kitchen knife . . . and a sharp pencil. Sit on a chair and let the foot which gives you the most trouble rest naturally and without moving on

the piece of paper as shown. Do not stand as this will spread the foot and result in an incorrect measurement. Our measurements allow for normal spread of foot when standing. Mark this piece of paper as shown in the four illustrations at the right.

You now will have a piece of paper with four pencil marks on it as shown at the right. Enclose this piece of paper with your order blank (if ordering more than one pair, send diagram for each pair of shoes you are ordering, with catalog number noted). Sears 4-Point Foot Measurement gives us all the information we need to determine your correct shoe size.

For Children's Shoes measure each time you order



Have someone else hold the knife straight up and down at the tip of your longest toe as shown in Point Number 1 above, and make a mark with the pencil along the outside edge of the point of the knife.



Have knife blade moved to the joint at the inside of the foot (widest part), as shown in Point Number 2 above, and again make a mark with the pencil along the outside edge of the blade.



Next, have the knife blade placed at back of the heel, as shown in Point Number 3 above, and make another mark along the outside edge of the blade. Be sure that the knife is held straight up and down.



And last, have knife blade placed at widest part of the outside of your foot, as shown in Point Number 4. This gives us your exact foot measurement so do not send us pencil outlines of your foot.

Shoe rationing may end during the life of this catalog. Watch your newspapers and listen to your radio for the Government's announcement. The following instructions are to be followed only while shoe rationing is in effect.

Four Ration Stamps, Airplane Stamps Number 1, Number 2, Number 3, and Number 4 in Ration Book 3, are now valid for the purchase of shoes, and will continue in effect for an indefinite period. Expiration dates for these four stamps will be announced by O.P.A. at least 30 days in advance, which will give you plenty of time to plan shoe purchases for your entire family.

You are permitted to detach Shoe Ration Stamps from your ration book when buying shoes by mail (but not when buying in a retail store). Send just the stamp. Do not send entire ration book.

Attach ration stamps securely to your order or letter. We guarantee the safety of your stamp. If we cannot fill order we will return to you a special stamp good for purchase of shoes in any store.

Extra ration stamps may be obtained from your ration board in cases of special need, such as for children or for workers, farmers, nurses . . . all those who require extra shoes for their work. If additional shoe stamps should be authorized during the life of this book, you can use them at Sears.

*You'll love to work
and play in SLACKS . .
wear them with
CASUAL JACKETS . . These
are famous-for-wear
Kerrybrookes . .*

Kerrybrooke casual clothes are precisely man-tailored in selected fabrics that keep their good looks, give amazingly long service. Each tailoring detail is handled by an expert. If you have ever worn our Kerrybrooke slacks, you know how dependable and how smart they are. They're expertly cut and put together for added comfort, greater style. The same holds true for Kerrybrooke casual jackets.

A **Stitched Crease Slacks**, 50% new wool, 50% cotton, tailored with concealed zipper placket. Front pleats, back darts, 2-button waistband with belt loops. 2 self fabric pockets. Durable stitching throughout for long wear (blouse not included). Dry clean. *Sizes: 12, 14, 16, 18, 20; size scale below. Please state size.* Shipping weight, 1 lb. 3 oz.
 ♦ 7 N 2841—Medium gray \$4.98
 ♦ 7 N 2842—Medium brown \$4.98
 ♦ 7 N 2843—Navy blue \$4.98

B **Fine-wale Cotton Corduroy Slacks**, top notch for style, popular because they're youthfully smart and have the fine features of Kerrybrooke manufacture. Man-tailored with 1-button waistband, self-fabric belt loops, front pleats. Right hand pocket. Darted to fit. Durable stitching throughout. *Sizes: 12, 14, 16, 18, 20; size scale below. Please state size.* Shipping weight, 1 lb. 5 oz.
 ♦ 7N2844—Royal (bright blue)
 ♦ 7N2845—Medium green
 ♦ 7N2846—Med. brown. Each \$4.98

Cardigan Jacket in fine wale corduroy. Unlined. Popular collarless style that goes so well with blouses and with sweaters. Perfect with slacks or shorts. 2 patch pockets. Darted front and back for nice fit. Shoulders padded for style. About 24 inches long. *Sizes: 12, 14, 16, 18, 20. Please state size.* Shipping weight, 1 pound 3 ounces.
 ♦ 7N3946—Bright red \$5.50

For wide assortment of famous Kerrybrooke Classic Shirts and Blouses, see our General Catalog.

Size Scale for Misses' Slacks

Order sizes	12	14	16	18	20
If waist is	25½	27	28½	30	32 inches
If hips are	35	36½	38	39½	41 inches
Outseam length	40½	40½	41	41	41½ inches

Size Scale for Misses' Snow Suits

Order sizes	12	14	16	18	20
If bust is	32½	34	35½	37	39 inches
If waist is	25½	27	28½	30	32 inches
If hips are	35	36½	38	39½	41 inches
Outseam length including waistband	42	42½	43	43	43½ inches

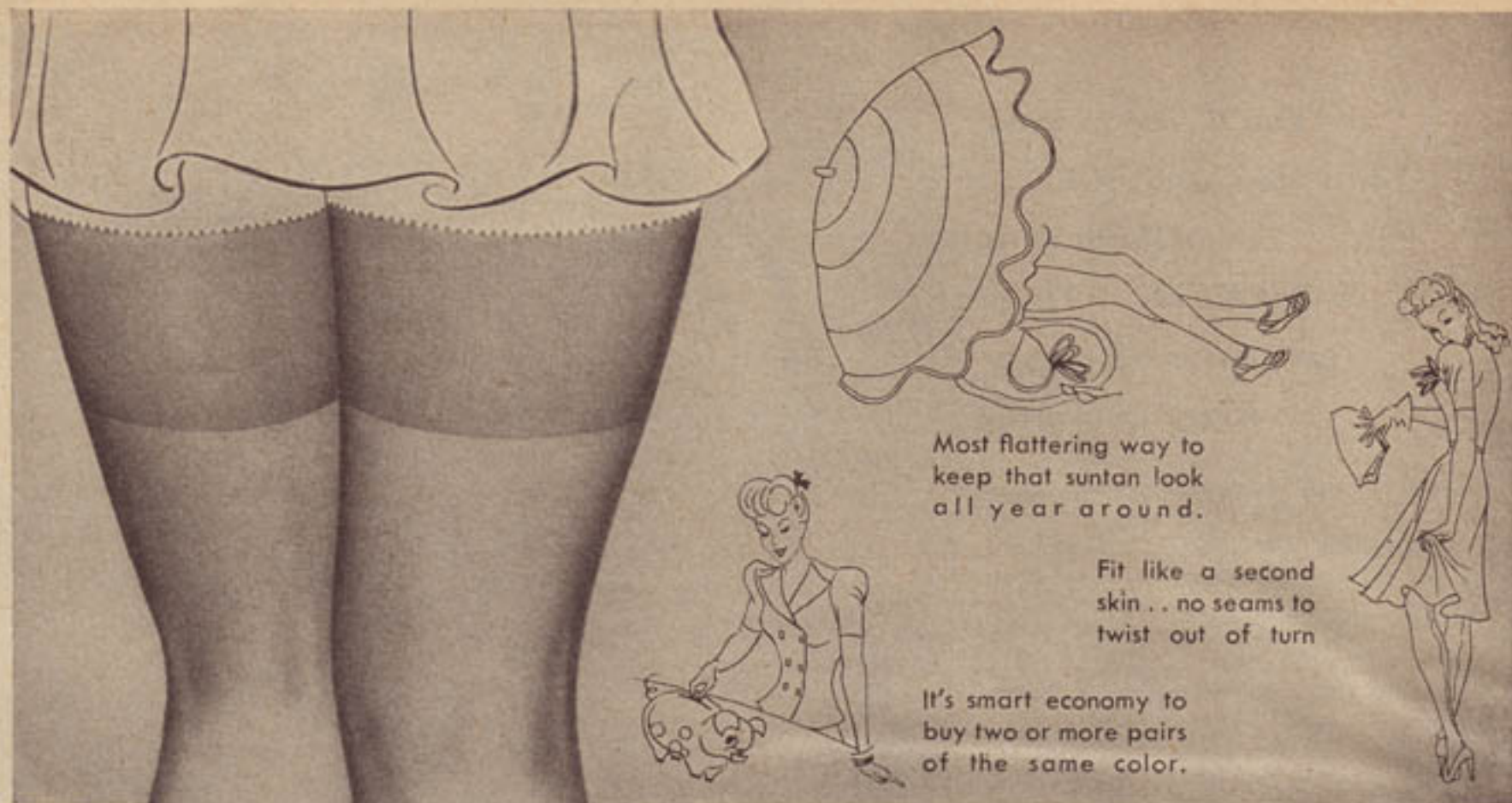
Measure to insure proper fit. Check your size before you order. Order size that most nearly corresponds to your measurements. Be sure that the garment you order comes in your size.



A Part Wool Slacks \$4.98

B Corduroy Slacks \$4.98

Jacket \$5.50



Most flattering way to keep that suntan look all year around.

Fit like a second skin . . . no seams to twist out of turn

It's smart economy to buy two or more pairs of the same color.

*The more Sheer Stockings
the merrier her Christmas*

Royal Purple
REG. U.S. PAT. OFF.

No-seam Sheers

2 PAIRS \$1.00

*340-needle . . . more finely knit
than 45-gauge stockings*

Stockings she would choose for herself . . . especially if she's young in spirit or age. Clear and ring free from top to toe, these sheer no-seam rayons give legs the sleek "poured in" look of natural suntan; they flatter *all the way around* for there's not a seam nor fashion mark anywhere to detract from their satiny smoothness.

340-needle knit assuring you fine, even texture, finer than in 45-gauge full fashioned hose. Needle count is to circular knit hosiery what gauge is to full fashioned; the higher the needle count the tinier the stitches (and more of them) for improved sheerness and strength. Rayon yarns are "high twisted" for elasticity and dull luster. Mercerized cotton heels, tops and toes. Seamless, comfortable soles.

*Color: beigetones. Sizes: 8½, 9, 9½, 10, 10½.
86 N 925—Shipping weight, 5 ounces. Please state size.*

Add hosiery to your next Easy Terms order of \$10.00 or more. Read details on page 174C

Give her Slippers

... RATION-FREE

Available after October 31st

F Gay "Ballerina" . . . New as tomorrow. Soft feather-light. Striped rayon velvet; black rayon cord tie. Padded sole. Shipping weight, 1 pound.

• C (medium) in women's sizes 4 to 9. No half sizes. No ration stamp needed . . . Please state size

15N3636—Red 15N3635—Rose
15N3634—Royal (med.) 15N3637—Lt. blue. Pr. **\$1.69**
blue

• D (medium) in girls' sizes 11 to 3. No half sizes.
15N908—Red 15N909—Lt. blue. Pr. **\$1.45**

G Bright Paisley Print . . . on lustrous corded weave rayon. Grand way to say "Merry Christmas." Padded sole. 1 1/4-inch heel. Shipping weight, 1 pound.

• C (medium) in women's sizes 4 to 9. No half sizes. No ration stamp needed . . . Please state size

15 N 3638—Wine (dark red)
15 N 3639—Medium blue
15 N 3640—Black Pair **\$1.38**

H Multicolor Striped Rayon . . . contrasts brightly with rough weave rayon. Hard leather sole. Low wedge type heel. Shipping weight, 1 pound.

• C (medium) in women's sizes 4 to 9. Half sizes, too. No ration stamp needed . . . Please state size

15 N 3648—Medium blue
15 N 3649—Wine (dark red) Pair **\$1.99**

J Cotton Chenille . . . rayon trim. Padded sole. 1 1/4-inch heel. Shipping weight, 1 pound.

• C (medium) in women's sizes 4 to 9. No half sizes. No ration stamp needed . . . Please state size

15 N 3652—Pink
15 N 3653—Light blue Pair **\$1.50**

K Practical Gift . . . Sturdy texture weave cotton dressed up with rayon satin. Hard leather sole, low wedge type heel. Shipping weight, 1 pound.

• C (medium) in women's sizes 4 to 9. Half sizes, too. No ration stamp needed . . . Please state size

15 N 3651—Wine (dark red)
15 N 3650—Medium blue Pair **\$2.19**

L Cotton Chenille . . . topped with fluffy white rabbit's fur. Very feminine. Padded sole. 1 1/4-inch heel. Shipping weight, 1 pound.

• C (medium) in women's sizes 4 to 9. No half sizes. No ration stamp needed . . . Please state size

15 N 3661—Medium blue
15 N 3660—Wine (dark red) Pair **\$1.89**

M Fireside Charmer . . . rough weave rayon; soft white rabbit's fur trim. Hard leather sole. Low wedge heel. Shipping weight, 1 pound.

• C (medium) in women's sizes 4 to 9. Half sizes, too. No ration stamp needed . . . Please state size

15 N 3646—Medium blue
15 N 3647—Wine (dark red) Pair **\$2.19**

Children's Slippers

Sizes 5 to 3, 11 to 3

N Warm as Toast . . . Sheep's wool lining, cuff and bunny trim. Order a size larger than regular shoe size. Leather sole. Shipping weight, 1 pound.

• Wide width. Sizes 5, 6, 7, 8, 9, 10, 11, 12, 13, 1, 2, 3. No ration stamp needed . . . Please state size

15 N 904—Brown leather Pair **\$1.29**

P Pretty as Mother's . . . Cotton chenille trimmed with rayon. A gift any girl will enjoy. Padded sole. 1-inch heel. Shipping weight, 1 pound.

• D (medium wide) girls' sizes 11, 12, 13, 1, 2, 3. No ration stamp needed . . . Please state size

15 N 910—Wine (dark red.)
15 N 911—Medium blue Pair **\$1.45**

See two additional pages of gift slippers in our big Fall Catalog . . . Men's and boys' styles, page 1XX; women's and children's, page 1W

F Women's
\$1.69
Royal blue
Rose
Red
Light blue

Girls'
\$1.45
Red
Light blue

G **\$1.38**
Wine
Blue
Black

H **\$1.99**
Blue
Wine

J **\$1.50**
Pink
Light blue

K **\$2.19**
Wine
Blue

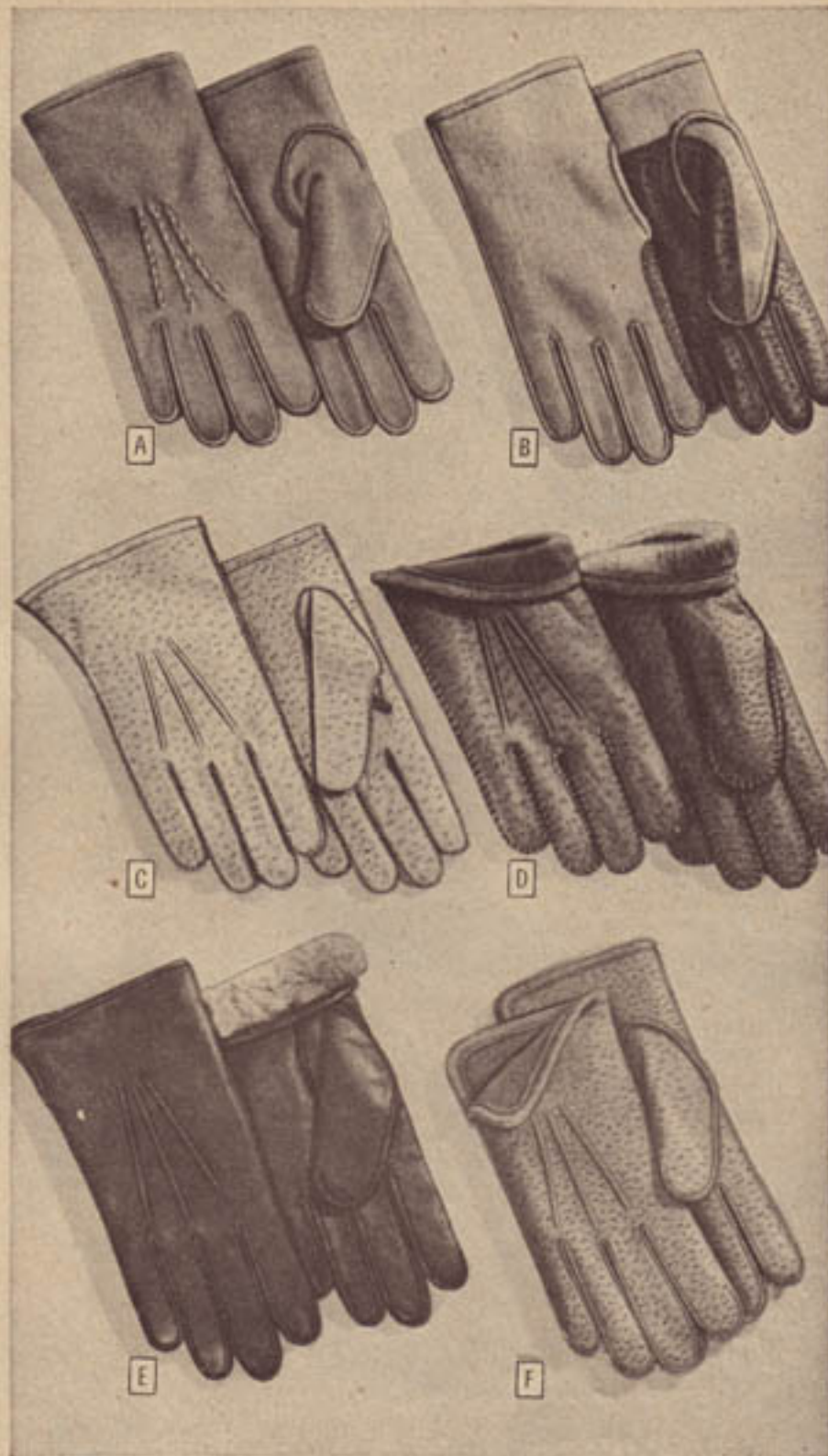
L **\$1.89**
Wine
Blue

M **\$2.19**
Blue
Wine

N **\$1.29**
Brown

P **\$1.45**
Wine
Blue





Men's Gloves . . . wool or leather

A Extra heavy all wool Slip-ons. Cut from knit fabric, made like dress gloves. Outseam sewn, hemmed tops, stitched backs. Shpg. wt., pr., 4 oz. Colors: camel (med.) tan or navy blue. Sizes: 8, 9 or 10. State size, color Available after November 1. 33 N 2707 Pair **\$1.29**

C Unlined capeskin Slip-ons. Smart dress gloves. Soft pig-grained leather. Neatly stitched backs. Swagger stitching all around. Self hemmed tops. Shipping wt., pr., 4 oz. Color: cork (medium tan) only. Sizes: 8, 8½, 9, 9½, 10. State size. Available after November 1. 33 N 2411 Pair **\$1.94**

E Fur lined capeskin . . . outseam sewn. Soft, pliable imported leather, clipped coney (rabbit fur) lining. Dark brown only. Sizes: small (8-8½), medium (9-9½), large (10-10½). Please state size. Shipping weight, pair, 8 ounces. Available after November 1. 33 N 2603 Pair **\$5.15**

B Wool knit Gloves . . . leather palms. Palms, fingers, thumbs are reinforced with pig-grained capeskin for longer wear. Shpg. wt., pair, 5 oz. Colors: black, brown, camel (med.) tan. Sizes: small (8-8½), medium (9-9½) or large (10-10½). State size, color. 33 N 2709 Pair **\$1.98**

D Lined capeskin Gloves, pig-grained. Swagger stitched. Colors: black or dark tan. Sizes: small (8-8½), medium (9-9½), large (10-10½). State size, color. 100% knit brushed wool lining. 33N2551—Shpg. wt., 6 oz. Pair **\$2.94** Clipped coney (rabbit fur) lining. 33N2602—Shpg. wt., 8 oz. Pair **\$4.95**

F Pig-grained deerskin Gloves . . . all wool lining. Fully lined with 100% knit wool. Slip-on style; outseam sewn. Shpg. wt., pair, 6 oz. Color: cork (medium tan) only. Sizes: small (8-8½); medium (9-9½); large (10-10½). State size. 33 N 2554 Pair **\$3.17**

Easy Terms . . . for details see page 174C



Sanforized poplin Uniform Shirts

They give you all the good looks you need on the job plus plenty of durability. Sanforized-Shrunk to keep their neat, comfortable fit after washing

For jobs where appearance counts a lot, yet you want a fabric that will stand up. Famous Burton's cotton poplin is tightly woven, with enough body to give you long, hard wear . . . fabric won't shrink over 1%. Carefully tailored with more attention to detail than in ordinary work shirts. Soft dress type collar, neatly and evenly stitched. Full cut and roomy for working comfort. Gussets keep side seams from ripping. Double shoulder yoke, plain shoulders. Button flap pockets. Tie not included. Sizes: 14-inch neck with 32 or 33-inch sleeves; 14½-inch neck with 32, 33 or 34-inch sleeves; 15, 15½, 16-inch neck with 32, 33, 34 or 35-inch sleeves; 16½, 17-inch neck with 33, 34-inch sleeves. See instructions for measuring at bottom of page. Please state neck size and sleeve length. 33 N 226—Gray only. Shpg. wt., each, 15 oz. Each **\$3.00**

\$2.98
Each

HOW TO MEASURE FOR UNIFORM SHIRTS



Neck size: Measure carefully around your neck. The number of inches is your correct neck size for comfortably fitting shirts.

Sleeve length: Bend arm at elbow. Measure from middle back of neck to length wanted. Number of inches is your correct length.



Warm? You bet! They're 50% wool and heavyweight

Pilgrim REG. U. S. PAT. OFF. **Shirts and Drawers**

Rib knit (not stretched) to fit perfectly, keep their snug fit

Pullover Shirt

Ribbed collarette neck slips easily over head . . . no fumbling with buttons. Military set-in, no sagging shoulders. Long sleeves, snug ribbed cuffs. Cut full and long enough to stay tucked in.



Button front Drawers

Double crotch. Reinforced medium depth yoke with three-button fly front opening. Adjustable lacing ties in back. Ankle length with snug fitting ribbed anklets. Seams reinforced at points of strain.



\$ 236
EACH GARMENT

50% warm wool combined with 50% absorbent cotton . . . ideal insurance against cold weather. Heavyweight underwear knit in a springy rib stitch that makes it fit snugly and conform to the body comfortably without bulking or binding. Elastic enough to stretch easily yet hold its shape well.

16 N 6054—Long sleeved pullover shirt. Shpg. wt., each, 1 lb. *Color:* cream. *Sizes:* 36, 38, 40, 42, 44 or 46-inch chest. Take measure over underwear. Place tape measure around chest under arms and over shoulder blades. *State size.*

16 N 6055—Ankle length drawers. Shpg. wt., each, 1 lb. *Color:* cream. *Sizes:* 32, 34, 36, 38, 40, 42 or 44-inch waist. To measure place tape around waistline. Measure over underwear, not over trouser belt. *State size.*

Sears Easy Payment Plan

Shop the easy way—by mail. Select all the warm underwear you need to keep your family comfortable this winter. Then let Sears help you buy it without drawing on your savings. Just turn to page 174C for complete information on Sears Easy Payment Plan. Anything Sears sell may be included in your Easy Payment order.

