



A



B



C



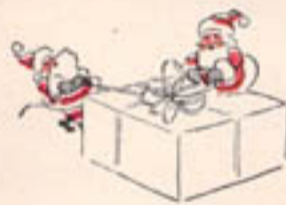
D



E



F



## Pretty Match-up Sets

for every lucky girl on your list

**A** **Stitched Set**, snug and cute in velvety surfaced knit cotton with prettily shell-stitched edges in contrasting color. Earlap helmet ties under chin. Kittenish, snug helmet and mittens fit all sizes. *Colors* White with bright red, bright red with navy, bright green with dark brown, dark brown with bright green. *Please state color.* Shpg. wt. 5 oz. **78 N 8005.....Set 1.98**

**B** **Brushed Cotton Set**, soft and snugly warm, this is one of our cutest sets for value-wise shoppers at Sears. A band of fluffy wool fringe frames the face adorably, makes her look like a Winter fairy. Parka ties under chin. Parka and matching mittens fit all sizes. *Colors* Bright red, white, wine red, dark green. *Please state color.* Shipping wt. 13 oz. **78 N 8035.....Set 1.69**

**C** **Dolly Muff Set**, answer to a little miss' prayer—now she can have a doll along wherever she goes! Rich white rayon plush that looks furry and fine, trimmed in bright red felt cloth (70% wool, 30% cotton). Muff, about 6½ x 7 inches in size, has a real doll's head. Hood fits all sizes. *Color* White with bright red felt cloth trimming. Shpg. wt. 1 lb. 1 oz. **78 N 8015.....Set 2.98**

**D** **Bunny Fur Set**, a really luxurious gift, pretty enough for a little princess! Snowy-white rabbit fur, lusciously fine and flattering. The muff has a darling Scotty head with red rayon satin ribbon bow, is about 7½ x 7½ inches in size. Hood has red rayon satin ribbon ties, fits all sizes. Price includes 10% Federal Excise Tax. Shipping wt. 1 lb. 1 oz. **78 N 8010E.....Set 6.85**

**E** **Novelty Hood Set**, bright as a rainbow with all-over stitching and two-tone pompons—comes in contrasting colors. Warm knit fabric (62% wool, 38% cotton). Peak front hood and matching mittens fit all sizes. *Colors* Bright red, royal (deep blue), dark brown, bright green. *Please state color.* Shipping wt. 4 oz. **78 N 8025.....Set 1.89**

**F** **Bonnet Set**, ideal for little fashion plates who love to look dressed up. Cunning bonnet shows off contrasting wool pompons, brim flatters small faces. Bonnet, mittens fit all sizes. Novelty knit cotton. *Colors* Red with green, dark green with red, wine with med. blue, royal (deep blue) with red. Shpg. wt. 1 lb. 1 oz. **78 N 8030 State color. Set 2.45**

**G** **Dutch Bonnet Set**, darling gift for fashion fans. Felt cloth (70% wool, 30% cotton) with applique flowers and stitching in contrasting color. Bonnet, mittens fit all sizes. Zip-top shoulder bag, abt. 7¾ in. diam. Price includes 40c Fed. Ex. Tax on bag. *Colors* Red, navy, brown, bright green. Shipping wt. 13 oz. **78 N 8000 State color. Set 3.98**

**H** **Pompon Hood Set**, colorfully cute, just the set for little girls to show off on windy winter days. Knit cotton with a nice looped weave, brightened by bands of multi-color stitching, pompons. Hood and mittens fit all sizes. *Colors* Bright red, dark green, brown, royal (deep blue). *State color.* Shpg. wt. 13 oz. **78 N 8020.....Set 1.98**



G



H

Catalog numbers marked † shipped from Chicago or Philadelphia. Order and pay postage from Sears nearest mail order house. It's easy to play Santa at Sears. Just make out your list, order your gifts, pay on Easy Terms . . . see page 231 for complete details.



## Gay Gifts for Girls

bright, fashionable, thrifty



**A** Ric-Roc Set, felt cloth (70% wool, 30% cotton). Drawstring bag, about 8½ x 7 inches, front trim. Top-knot beret fits all sizes. Price includes 18c Federal Excise Tax on bag. Shipping weight 6 ounces. 88N1545-Red 88N1546-Navy 88N1547-Dark green... Set 1.79

**C** Fairytale Scarf, a gift any little girl will treasure. White rayon, gaily printed with characters from Grimm's stories, bordered in pretty shades of blue, red or yellow. Size about 11½ x 35 in. State color. 88N4303-Shipping wt. 3 oz. 97c

**E** All Wool Scarf, soft-textured and fine, an ideal gift. And it's excellent value at Sears low price. Nice weave, fringed ends. Size about 11 x 47 inches. Colors Red, light yellow, white. State color. 88N4302-Shipping wt. 4 oz. 97c

**G** Checkerboard Shoulder-Strap bag, cute design in smooth leather-like plastic. Handy zip-top. Fabric lined, mirror. Size about 8¼ x 5 inches. Shipping wt. 7 oz. 88N1594E-Brown with rust tan 88N1593E-Red with navy. Ea. 2.34

**J** Jive Bag shows off all the latest lingo, in front. Felt cloth (70% wool, 30% cotton), rayon cord drawstring. Size about 11 x 8¾ inches. Shipping weight 4 ounces. 88N1590E-Brown 88N1591E-Red 88N1592E-Bright green. Ea. 1.14

**L** Lambskin backs (processed to look like fur), with sturdy, domestic cape leather palms. Soft cotton fleece lined mittens. Sizes Small, medium, large. Size scale, page 232. State size. Shipping weight 6 ounces. 88N5260-Red 88N5261-Green... Pair 1.59

**K** Bunny Mittens, snowy rabbit fur backs, small-grained leather palms. Cotton fleece lined. Sizes Small, medium, large; see scale on page 232. Please state size. Shipping weight 6 ounces. 20% Federal Excise Tax included. 88N5276E-White, green palm 88N5275E-White, red palm Pr. 2.47

**B** Nailhead Set, felt cloth (70% wool, 30% cotton), gold color metal trim. Drawstring bag about 5¾ in. diameter. Hat fits all sizes. Price includes 32c Federal Excise Tax on bag. Shipping weight 8 oz. 88N1589-Brown 88N1548-Red 88N1549-Bright navy... Set 3.49

**D** All Wool Headkerchief, just what every girl needs for school, sports and outdoor fun. Can be worn as a scarf, too, of course. Size about 27 in. square. Colors Red, medium blue, white. State color. 88N4489-Shipping wt. 4 oz. 97c

**F** Gay Novelty Suspenders of bright red felt cloth (70% wool, 30% cotton) with decorated white cotton tape center. Clip-on ends. Adjustable. Shipping wt. 4 ounces. 88N4333-Fits sizes 1 to 8... 77c 88N4444-Fits sizes 10 to 18... 87c

**H** Nailhead Shoulder-Strap, grown-up style for pint-sizers. Artificial leather bag, gold color metal trim in front. Fabric lined, mirror. Size about 6½ x 4¾ in. Shpg. wt. 6 oz. 88N1597E-Red 88N1598E-Navy... Each 1.14

**K** Top-Handle Frame Bag, just like Mama's! Grained artificial leather, pleated in front. Fabric lined, mirror. Size about 7¾ x 3¾ inches. Shipping weight 7 ounces. 88N1573E-Bright green 88N1574E-Navy 88N1599E-Red... Each 1.14

**M** Half-n-Half Mittens, small-grained leather backs, brushed rayon palms. Cotton fleece lined. Sizes Small, med., large; scale, page 232. State size. Shipping weight 6 oz. 88N5280-Red 88N5281-Green 88N5282-Royal (deep blue) Pr. 1.05

**P** All Wool Mittens, colorfully assorted jacquard designs... no choice of pattern. Sizes Small, medium, large; see scale, page 232. Please state size. Shipping wt. 4 oz. 88N5270-Red 88N5271-Brown 88N5272-Navy 88N5273-Green... Pair 89c



Prices of bags shown include 20% Federal Excise Tax



E \$2.95

F \$5.95



G \$1.95



H \$1.49



J \$1.95



K \$4.89



L \$8.95



M \$1.79

B 95c



A \$1.95



C \$1.95



D \$1.95

## Fashionable gifts for practical wear

There's one for every woman on your list in this exciting group . . . high-fashion or tailored . . . inexpensive or luxurious



**A** 100% Zephyr Wool Square, a wonderful gift find at Sears thrifty price. Lightweight and lovely, with the soft, caressing texture and lovely pure colors only possible with fine, pure zephyr yarns. Makes a stunning headsquare as shown, or can be worn as a scarf. *Colors* White, lt. pink, lt. blue, lt. yellow. *State color.* *Size* about 31 in. square. Shipping weight 6 oz. 88 N 4541 . . . . . 1.95

**B** Solid Color Standby, an all-purpose square that every woman needs, at a very thrifty price. Can be worn as a headkerchief, twisted into a turban or knotted around the throat. Rayon and acetate rayon fabric that looks like wool, with fringed borders. *Colors* Light blue, light yellow, white. *Please state color.* *Size* about 27 inches square. Shipping weight 6 ounces. 88 N 4542 . . . . . 95c

**C** All Wool Scarf, sure to win a warm welcome—for this is the good looking scarf classic that every wardrobe needs. She'll wear it with suits and coats, for outdoors and sports. Fine 100% wool yarns in a nice homespun weave with hand-knotted fringe borders. *Colors* Light yellow or white. *Please state color.* *Size* about 12 x 46 inches. Shipping weight 5 oz. 88 N 4544 . . . . . 1.95

**D** All Wool Scarf, shown here tied as a shoulderette. A gift she'll appreciate on chilly days. And besides their cozy warmth, wool scarfs are very much in the style scene, worn as fascinators, too. This soft 100% wool beauty is large enough to drape gracefully. *Colors* White, light pink or light blue. *State color.* *Size* about 17 x 48 inches. Shipping weight 6 oz. 88 N 4543 . . . . . 1.95

### Description of Items Shown on Opposite Page

**E** Dramatic Dressmaker Scarf, so stunning, it makes any plain dress important! The splashy floral pattern is Fashion's last word, printed on fine-looking sheer rayon. And the long oblong shape can be tied several different ways, or even worn around the waist as a sash. *Colors* Lt. pink, lt. blue, lt. yellow. *State color.* *Size* about 21 x 46 inches. Shipping weight 4 oz. 88 N 4546 . . . . . 2.95

**F** Arabian Nights, for the lady on your list who appreciates luxury. She'll love the brilliant pattern of this headsquare in filmy rayon, the smartness of the glittering sequin corner pattern, sewn by hand. Shown here as a scarf, can be worn several ways. *Colors* Light pink or light blue, multi-color print. *Please state color.* *Size* about 29 inches square. Shipping. wt. 4 oz. 88 N 4499 . . . . . 5.95

**G** Pixie Cap, perfect choice for the girl who loves up-to-the-minute ideas. This is the gay little cap that's been such a smash style hit. Made of soft jersey (50% wool, 50% cotton) with gold color metal nailhead trim. Can be worn several ways. *Colors* Black, dark brown, medium blue, red. *Please state color.* *Size* about 30 inches long. Fits all headsizes. Shpg. wt. 6 oz. 88 N 4549 . . . . . 1.95

**H** Flowers For Madame, sure to get a vote of thanks . . . it's the type of headsquare that's so much in vogue, brilliantly patterned in vivid blossoms. Made of nice quality white rayon crepe printed in bright colors. One of the thrift-minded gifts that makes it wise to shop at Sears and save. *Color* White background, multi-color pattern. *Size* abt. 26 in. sq. Shpg. wt. 4 oz. 88 N 4551 . . . . . 1.49

**J** Sequined Mantilla, a glamour gift for her important evenings. Very high fashion and flattering, can be worn over the shoulders, too. Sheer black rayon lace, bewitchingly feminine, with stunning motif of hand-sewn gold-color sequins at one end. Festive and fine, this makes a wonderful Christmas remembrance. *Size* about 22 x 54 inches. Shpg. wt. 4 oz. 88 N 4550 . . . . . 1.95

**K** Sequin Fireworks give this stunning ascot scarf the smartness of a Paris original! Fine rayon crepe with an eye-catching design of many-colored sequins sewn on by hand at one end. Double-faced, shaped narrower in the middle to fit well when tied. *Colors* Black, light blue, fuchsia (purplish red). *Please state color.* *Size* about 40 x 10 inches. Shpg. wt. 4 oz. 88 N 4548 . . . . . 4.89

**L** Paradise Square, a really gorgeous gift that will be treasured for many seasons to come. Who wouldn't be thrilled by the glamour of gold and vari-colored sequins with spangles exquisitely patterned by hand on fine black rayon crepe. Can be worn as a scarf, too. *Size* about 32 inches square. Luxuriously lovely . . . a Sears value. Shipping weight 5 ounces. 88 N 4547—Black . . . . . 8.95

**M** Favorite Floral Square, sure to be the busiest item in her wardrobe. Printed on attractive spun rayon that looks like challis. Full of gay color but not too dressed up for casual wear or sports. And it makes a nice scarf, too. Quite a gift find, at Sears thrifty price. *Color* White with bright multi-color. *Size* about 35 inches square. Shipping weight 6 oz. 88 N 4545 . . . . . 1.79

**A** \$3.49  
tax included



**C** \$3.49  
tax included  
Initials extra



**B** \$6.99  
tax included  
Initials extra



**D** \$4.69  
tax included  
Initials extra



## Every Woman Wants a Bag

The perfect Christmas present . . . any one of these quality styles pays her a compliment



**A** Four-part Frame, ideal for the woman whose bag must hold a lot . . . has a full-size swinging compartment in the center. Opens wide, there's no need to dive for contents. Trim and roomy in smooth calf-like plastic that wears so well, gathered in front from a strong metal frame. At Sears thrifty price, it's a gift find, sure to receive a royal welcome. Fabric lined and mirror. Size about 14 x 7½ inches. Shipping weight 1 pound 2 ounces.  
88 N 916E-Black . . . . . 3.49  
88 N 917E-Brown . . . . . 3.49

**B** Double Zip-Underarm, for women who like fine things. She'll appreciate the superlative quality of this Kerrybrooke bag in supple, scuff resistant goatskin. Made to our own strict specifications, with 2 full-size compartments. Finest workmanship in the curved, stitched yoke, rounded gussets. Rayon lined, a change purse on a frame, mirror. Size about 14½ x 8 in. Initials sold separately—see below. Shipping weight 1 pound 2 ounces.  
88 N 1006E-Black . . . . . 6.99  
88 N 1007E-Brown . . . . . 6.99

**C** Top-handle Envelope, gives her service as well as style. This bag has a wonderful inside story—besides a center zip pocket, it boasts an extra zip section for valuables. Sleek and simple in grained leather-like plastic, the wonder material that wears so well. Compact, but very roomy. Exceptionally well detailed . . . at Sears low price. Initials sold separately—see below. Fabric lined, mirror. Size about 10 x 8 inches. Shpg. wt. 1 lb.  
88 N 914E-Black . . . . . 3.49  
88 N 915E-Brown . . . . . 3.49

**D** Four-Part Frame Bag . . . beautifully constructed on a fine metal frame . . . opens wide, no need to fumble for contents. It's one of our own Kerrybrooke bags . . . made to our strict specifications. Ideal for busy women whose bags must hold a lot . . . has full-size swinging compartment in center. Handsomely grained goatskin. Rayon lined, double mirror. Size about 10½ x 7½ inches. Initials sold separately—please see below. Shpg. wt. 1 lb. 5 oz.  
88 N 1000E-Black . . . . . 4.69  
88 N 1001E-Dark brown . . . . . 4.69

### Description of bags shown on opposite page. Prices of all bags shown include 20% Federal Excise Tax.

**E** Suede Side Handler. The novel draped handles extending up from the sides is one of the latest trends. Luxurious-looking and fine, this frame pouch is an accessory she'll be proud to show off, a find at Sears price. The velvety, soft suede leather will complement her best Fall and Winter outfits, the rounded broad-based shape is roomy. Fabric lining, change purse on frame, mirror. Size about 9 x 5¾ in. Shpg. wt. 14 oz.  
88 N 903E-Black . . . . . 8.88  
88 N 904E-Brown . . . . . 8.88

**F** Mock Shell Frame, wonderful choice for the woman who loves luxury, this stunning top-handle pouch in the graceful deep, smaller size. She'll love the all-season elegance and intricate fineness of the rich rayon corde, the costly air of the fine frame in mock shell. One of our most elegant bags, exquisitely made. Fabric lined and fastidiously fitted with fine change purse on frame, mirror. Size about 10½ x 7½ inches. Shpg. wt. 1 lb. 2 oz.  
88 N 907E-Black . . . . . 11.88  
88 N 908E-Brown . . . . . 11.88

**G** Skirt Bag, for the high-fashion girl on your list. There's a world of style news in that tiered effect . . . the overarm loop handle. Its eye-catching frame of fine mock shell looks so expensive, snaps open or shuts securely without a lock. The material is luxurious 100% wool broadcloth, smooth and fine, such a fashionable companion for her best outfit. Fabric lined, change purse on frame, and mirror. Size about 12 x 9½ inches. Shipping weight 1 pound 2 ounces.  
88 N 905E-Black . . . . . 8.88

**H** Nailhead News, so sparkling-smart and new, this is indeed a fashion-wise gift, good value at Sears thrifty price. The diamond shape is dramatic and different, the gold color metal nailhead trimming in front is Fashion's latest trend, seen everywhere. Wide overarm sash handle for comfortable carrying, and zip closing down one side. Made of pliable calf-like plastic. Fabric lined, and mirror. Size about 14 x 14 in. Shpg. wt. 14 oz.  
88 N 918E-Black . . . . . 4.69  
88 N 919E-Brown . . . . . 4.69

**J** Draped Drama, a wonderful style surprise. She'll applaud your choice of this unusual zip-top, so intricately detailed, so rounded and roomy. Note the smart knotted handles and dramatic ornaments of gleaming mock shell . . . deftly draped sides that wing out smartly. Long wearing in calf-like plastic, smooth and supple. Fabric lined, coin case and mirror. Size about 12¾ x 8¾ in. Shpg. wt. 1 lb.  
88 N 900E-Black . . . . . 5.89  
88 N 902E-Red . . . . . 5.89  
88 N 901E-Brown . . . . . 5.89  
Each . . . . . 5.89

**K** Ring Underarm, comfortable to carry, always in demand . . . this is the type of zip-top that she might choose herself. Dressmaker shirring radiates from an impressive gold color metal ring in front. Calf-like plastic. Fabric lined, mirror. Size about 13½ x 7½ inches. Shipping weight 1 pound.  
88 N 909E-Black . . . . . 5.89  
88 N 910E-Brown . . . . . 5.89  
Metal Initials in gold color, size about 1½ in. All initials except "X". Shipping weight each 1 ounce.  
88 N 1012 . . . . . Each 29¢, 3 for 84¢

**L** Half-Moon Bracelets, add importance to one of our most sought-after styles, handsomely handled with curved bracelets of mock shell that are so in vogue. This graceful zip-top style boasts an all-around cuff top and soft gathers. The pliable calf-like plastic wears excellently and resists scuffing. Fabric lined and mirror. Size about 13 x 8 inches. Shipping weight 1 pound 2 ounces.  
88 N 911E-Black . . . . . 5.89  
88 N 913E-Red . . . . . 5.89  
88 N 912E-Brown . . . . . 5.89  
Each . . . . . 5.89

**E** \$8.88  
tax included



**F** \$11.88  
tax included



**G** \$8.88  
tax included



### Sears plays Santa Smartly with style

Choose from a glamour group of  
bags . . . fine leather or rich suede,  
broadcloth, corde or plastics

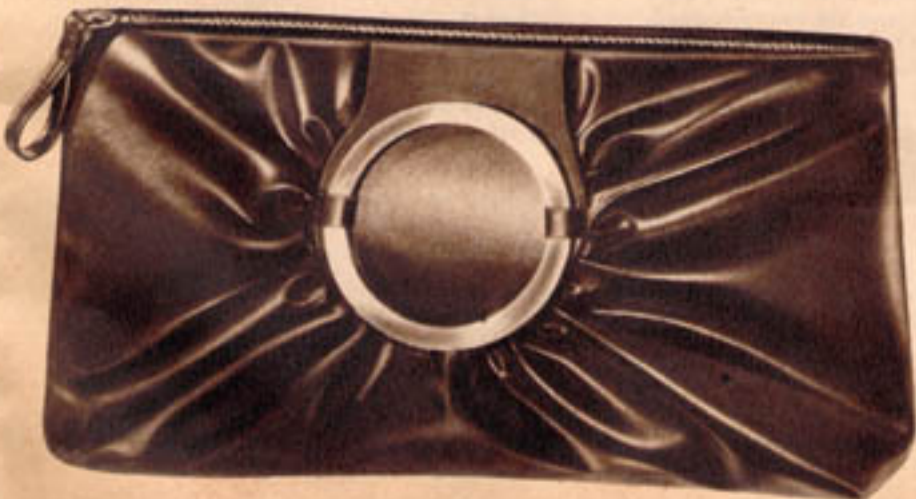
**H** \$4.69  
tax included



**J** \$5.89  
tax included



**K** \$5.89  
tax included



**L** \$5.89  
tax included





**B** \$1.44



**Charmode**  
MIL. U. S. PAT. OFF.

**C** \$1.25  
Rayon satin



**D** \$1.69



**A** \$1.98



For women interested in  
**"A BEAUTY-LIFT THAT LASTS"**

These flattering Charmode Bras exclusively feature **CORDTEX**. Inserts of this specially processed fabric give correct uplift, lasting support.

It's really amazing what a Charmode CORDTEX-lift bra will do for your silhouette! Note the difference in the small figures at the right—one without and one with a CORDTEX-lift bra. CORDTEX is the simple secret of this famous "beauty-lift that lasts." Graceful "Elfin" style inserts of this fabric are set at base of each bust-cup as shown in the small views at left.



This gently but firmly supports from underneath and gives a wonderful uplift to the bust—not only while the bra is new, but always—for CORDTEX is specially treated rayon and cotton fabric that always keeps its shape; never becomes limp or saggy, even after repeated washings. It's truly a miracle fabric!



**E** \$1.44

**A** Designed with exclusive CORDTEX inserts . . . proportioned with deep, roomy bust-cups for the large bust. CORDTEX gives firm support, a youthful uplift. Fine quality rayon and cotton fabric. Fagoted bust-cups; cotton net lined underbust. 1-inch diaphragm band gives snug fit. Adjustable self-material straps. Medium low adjustable elastic back closing.

*For the Large bust-cup type*  
 Even bust sizes 32 to 42 inches.  
 State bust size. Shpg. wt. 4 oz.  
 18N789—Pale flesh pink. \$1.98  
 18 N 788—White. . . . . 1.98

**B** CORDTEX-lift bandeau for the same Small bust-cup type as bra at right, but styled with clearly separated bust-cups for more accentuation. Has same exclusive CORDTEX inserts as other bras on page for that "beauty-lift that lasts!" Exquisitely made of fine quality nylon taffeta, nylon marquisette or rayon material (sorry, no choice). Adjustable shoulder straps. Adjustable elastic back closing.

*For the Small bust-cup type*  
 Bust sizes 30, 32, 34, 36 inches.  
 State bust size. Shpg. wt. 3 oz.  
 18N691—Pale flesh pink. \$1.44

**C** Specially proportioned bandeau for the young girl or woman with a smaller-than-average bust. Exclusive CORDTEX inserts give wonderful uplift support. Choice of two fine quality materials. Fagot stitched bust-cups with cotton net lined underbust. Adjustable straps. Adjustable elastic back closing.

*For the Small bust-cup type*  
 Bust sizes 30, 32, 34, 36 inches.  
 State bust size. Shpg. wt. 4 oz.  
 18 N 778—Lustrous rayon satin. Pale flesh pink. \$1.25  
 18 N 779—Cotton broad-cloth. Pale flesh pink. . . \$1.19

**D** Same popular CORDTEX-lift style as bra at left, but with deeper bust-cups to fit the average bust. Choose from two fine quality fabrics. Fagoted bust-cups; cotton net lined underbust. Adjustable shoulder straps. Adjustable elastic back closing.

*For the Medium bust-cup type*  
 Bust sizes 32, 34, 36, 38 inches.  
 State bust size. Shpg. wt. 4 oz.  
 18 N 780—Lustrous rayon satin. Pale flesh pink. . . \$1.69  
 18 N 783—Lustrous rayon satin. White. . . . . \$1.69  
 18 N 787—Cotton broad-cloth. Pale flesh pink. . . \$1.69

**E** Another bra for the Medium bust-cup type that features Sears exclusive CORDTEX inserts. It's styled with clearly separated bust-cups that give more accentuation than bra (D). Expertly tailored in three fine quality fabrics—nylon taffeta, nylon marquisette or rayon material. (Sorry, no choice, but satisfaction guaranteed.) Adjustable shoulder straps. Adjustable elastic back closing.

*For the Medium bust-cup type*  
 Bust sizes 32, 34, 36, 38, 40 in.  
 State bust size. Shpg. wt. 3 oz.  
 18N696—Pale flesh pink. \$1.44

# Lightweight Charmode Garments

Choice of 8 favorite styles for the co-ed figure  
Each a value at these Sears typical low prices

## Fine quality Tu-way Control Girdle

**A** Synthetic elastic front, sides and back—helps slim the hips and hold in the tummy. Tu-way control—front and back, of rayon and cotton satin elastic, stretch up and down; sides of rayon and cotton leno elastic, stretch both up and down and crosswise. Boned cotton inner shield at front. TALON zipper. 4 elastic garters. Nude.

*For Straight to Average Hip Figure*

*Fits hips 7 to 10 inches larger than waist*

*Waist sizes 25, 26, 27, 28, 29, 30, 31, 32 inches.*

*Please state waist and hip size. Shpg. wt. 14 oz.*

**18 N 1898—Med. to Long Length 15½ in. \$6.98**

## Special Panty Girdle for Full Figures

**B** Active-wear panty girdle for the larger woman. Rayon and cotton satin front and back. Wide side panels and crotch are cotton and rayon synthetic elastic. Crotch is deeper and longer than most. 3 bones at front help smooth abdomen. TALON side zipper. 4 detachable garters. Nude.

*For Average to Full Hip Figure*

*Fits hips 8 to 11 inches larger than waist*

*Waist sizes 26, 27, 28, 29, 30, 31, 32, 33, 34; also 36 inches. Please state waist and hip size. Shipping weight 14 ounces.*

**18 N 1903—Med. to Long length 15½ in. \$6.49**

## "Nu-Comfort" Girdle . . . reduced \$1.00

**C** What a value! Features "Nu-Comfort" back . . . an insert of rayon and cotton elastic across top back for snug fit at waist. Rayon and cotton satin; matching elastic sides and gore. Lightly boned front. TALON side zipper. 4 garters. Nude.

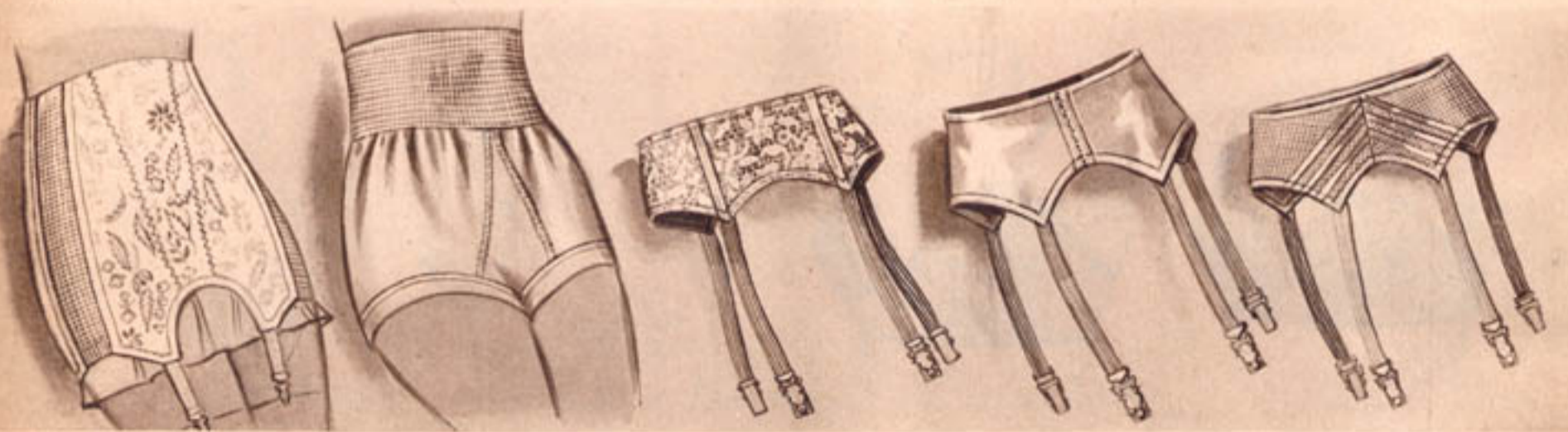
*For Straight to Average Hip Figure*

*Fits hips 7 to 10 inches larger than waist*

*Waist sizes 26, 27, 28, 29, 30, 31, 32, 33, 34 in. Please state waist and hip size. Shpg. wt. 14 oz.*

**18 N 1825—Med. to Long length about 15 in. waist down; 16 in. overall (fits 1-inch above waist). Was \$5.89. Now only . . . \$4.89**

**Charmode**  
REG. U.S. PAT. OFF.



### Big Value Garter Girdle

Ideal for figures that need minimum control. Sturdy rayon figured cotton batiste. Lightly boned, 9-inch front gives firm abdominal support. 12-inch back is boneless. 10-inch cotton and rayon synthetic elastic side panels give wonderful stretch. Side hook closing. 4 elastic garters. Nude (pale flesh pink). *Waist sizes 25, 26, 27, 28, 29, 30; also 32, 34, 36 inches. Please state waist and hip size. Shipping weight 8 ounces.*

**18 N 1741 . . . \$1.94**

### Tummy Band Panty

Elastic tummy band slack panty that gives gentle control with the freedom necessary for active wear. Lower part of panty is made of soft knitted rayon. 5-inch tummy band is synthetic elastic knit with cotton and rayon. No garters. Nude.

*To fit waists 23, 24, 25, 26, 27, 28, 29, 30 inches. Please state waist size. Shpg. wt. 6 oz.*

**18 N 1908 . . . 98c**

### Lace Garter Belt

A co-ed favorite—dainty cotton lace lined with sturdy cotton net or double cotton net (no choice). Rayon satin ribbon trim. 4-inch front. Elastic back hook closing. 4 adjustable elastic garters. Nude.

*Waist sizes 24, 26, 28, 30, 32, 34 inches. State waist size. Shpg. wt. 6 oz.*

**18 N 1700 . . . \$1.19**

### Satin Garter Belt

Lustrous beauty . . . just right for co-eds. Made of rayon and cotton satin. 4 inches wide at center front, 6 inches where garters are attached. Elastic insert at back hooking. 4 adjustable elastic garters. Nude.

*Waist sizes 24, 26, 28, 30 inches. Please state waist size. Shpg. wt. 6 oz.*

**18 N 1705 . . . \$1.59**

### Nylon Garter Belt

Deluxe quality—sheer NY-LON marquisette trimmed with rayon satin ribbon. About 3½ in. at center front, 6 in. at garters. Easy to wash—dries quickly. Elastic at back hook closing. 4 adjustable elastic garters. Nude.

*Waist sizes 24, 26, 28, 30 inches. Please state waist size. Shipping wt. 6 oz.*

**18 N 1723 . . . \$1.94**





## Give her a gay Brunch Coat to start her day right

**Printed Seersucker \$3.98**

**A** Soft and feminine and very practical. A gift that's sure to make a hit with any young lady on your Christmas list. Pretty U neckline, full ruffles and skirt and generous overlap. Good quality printed seersucker. Washable, needs no ironing. *Sizes 12, 14, 16, 18, 20; see size scale on page 55 Please state size.* Shipping weight 1 pound. †27 N 7212—Pink with navy dots Each..... 3.98

**Woven Gingham \$4.98**

**B** "A Dan River Fabric" in a beautiful block plaid; fine quality and pre-shrunk (maximum fabric shrinkage, 3%). Pinafore ruffles over shoulders; full skirt. A gift that will delight the most discriminating miss. Washable. *Sizes 12, 14, 16, 18, 20; see size scale on page 55. State size.* Shipping weight 1 lb. †27 N 7210—Pink, black, green †27 N 7211—Yellow, black, red Each..... 4.98

**Our Best Chambray \$4.98**

**C** A gift that's outstanding in style and quality. Lovely Lonsdale chambray, pre-shrunk (maximum fabric shrinkage, 3%). The back is plain; the front is made of bands of beige, pale blue and pink, edged with contrasting piping. Washable. *Sizes 12, 14, 16, 18, 20; see size scale on page 55. Please state size.* Shipping weight 1 pound. †27 N 7214—Beige (light tan), blue, pink..... 4.98

**Lace-trimmed Cotton \$3.98**

**D** White embroidered lace and white ring dots accent this bright brunch coat. Nice square neck and unusual apron effect. Good quality cotton. A Christmas gift that any woman would be happy to receive. Washable. *Sizes 12, 14, 16, 18, 20; see size scale on page 55. Please state size.* Shipping weight 1 pound. †27 N 7217—Aqua (greenish blue) †27 N 7218—Rose Each..... 3.98



**Here's a Value  
that makes you believe  
in Santa Claus!**

This smartly tailored robe is almost too good to be true at this price. It would be a top value at any time . . . and at Christmas, when you need to get the most for your money, it's a real find. It's soft and warm and well made . . . cozy and comfortable to wear around the house, nice enough to take visiting anywhere. It's a lovely gift . . . and a wonderful buy at Sears low price.

**\$6<sup>59</sup>**  
Part Wool Robe

There's lots of warmth and wear and solid comfort in this modestly priced robe. And it's a favorite style with women of every age. They like its simple lines, its neat, trim look; its shawl collar, smooth shoulder, good overlap. The fabric is 50% reused wool, 30% cotton and 20% rayon. The edging is rayon, white dots on a contrasting color ground. You can be sure this robe will be a much appreciated gift. Dry clean. *Sizes 12, 14, 16, 18, 20. Please state size.* Shipping weight 2 pounds 6 ounces.  
 † 27 N 7685—Navy with red and white edging  
 † 27 N 7686—Wine red with navy and white edging  
 Each . . . . . 6.59

**Size Scale for Misses' Robes and Brunch Coats**

|                        |    |     |     |     |     |        |
|------------------------|----|-----|-----|-----|-----|--------|
| Order size: . . . . .  | 10 | 12  | 14  | 16  | 18  | 20     |
| If bust is: . . . . .  | 31 | 32½ | 34  | 35½ | 37  | 39 in. |
| If waist is: . . . . . | 24 | 25½ | 27  | 28½ | 30  | 32 in. |
| If hips are: . . . . . | 34 | 35  | 36½ | 38  | 39½ | 41 in. |

Catalog numbers marked † shipped from Philadelphia or Kansas City. Order and pay postage from Sears nearest mail order house. . . See our Big Catalog for a more complete selection of robes . . . All of your Christmas gifts may be purchased on Sears Easy Terms if your order totals \$10 or more . . . see page 231 for full information.





## Give her a Robe for Christmas

...if she loves comfort and luxury, too  
 ...if she likes to read before bedtime  
 ...if she has a hard time getting up  
 ...if she feels cold most of the time



### Chenille for wear and washability **\$7.98**

**A** This robe is as practical as it is beautiful. The cotton chenille is soft and full, single needle stitched. The style is a favorite with all women...surplice neckline, fitted waist, half belt, full skirt and generous overlap. You'll be sure to make a hit with this Christmas gift. Washable, pre-shrunk (maximum fabric shrinkage, 3%). *Sizes 12, 14, 16, 18, 20; see size scale below. Please state size. Shpg. wt. 2 lbs. 10 oz.*  
 † 27 N 7690—Dusty rose..... 7.98  
 † 27 N 7691—Copen (medium blue)..... 7.98

### Full-length quilted rayon for luxury **\$12.98**

**B** If you want to please a lovely lady, put this robe under her Christmas tree. She'll be delighted with its soft warmth and luxury; its long, graceful lines; its pretty pattern. Fitted bodice, princess back, half belt, big skirt and generous overlap. Good quality rayon with full rayon lining. Assorted floral prints. Dry clean. *Sizes 12, 14, 16, 18, 20; see size scale below. Please state size. Shpg. wt. 2 lbs. 9 oz.*  
 † 27 N 7700—Floral print on dusty rose..... 12.98  
 † 27 N 7701—Floral print on medium blue..... 12.98

### Quilted rayon shortie for glamour **\$10.98**

**C** The younger set loves short quilted robes and the young lady on your Christmas list will adore this one. It's soft and warm and glamorous. Good quality rayon with a full rayon lining; fitted bodice; half belt; flaring skirt. Assorted floral patterns. Dry clean. *Sizes 12, 14, 16, 18, 20. Please state size. Length, about 42 in. Shpg. wt. 2 lbs. 4 oz.*  
 † 27 N 7705—Floral print on dusty rose..... 10.98  
 † 27 N 7706—Floral print on medium blue..... 10.98

#### Size Scale for Misses' Robes and Brunch Coats

|                  |    |     |     |     |     |        |
|------------------|----|-----|-----|-----|-----|--------|
| Order size.....  | 10 | 12  | 14  | 16  | 18  | 20     |
| If bust is.....  | 31 | 32½ | 34  | 35½ | 37  | 39 in. |
| If waist is..... | 24 | 25½ | 27  | 28½ | 30  | 32 in. |
| If hips are..... | 34 | 35  | 36½ | 38  | 39½ | 41 in. |

Catalog numbers marked † shipped from Philadelphia or Kansas City. Order and pay postage from Sears nearest mail order house. More good looking robes in our big general catalog. Use Sears Easy Terms for Christmas gifts. See page 231.

**A** \$7.98  
 Chenille Robe  
 Sizes 12 to 20



**B** \$12.98  
Quilted rayon robe  
Sizes 12 to 20



**C** \$10.98  
Quilted rayon shortie  
Sizes 12 to 20



**B** \$16.98  
All Wool Flannel



**C** \$16.98  
All Wool Flannel



F \$3.30



G \$2.47



K \$2.49



J \$2.19



H \$2.50



M \$1.84



L \$2.98

## Kerrybrooke Lovelies . . . flattering gifts Trainloads of slippers for every woman

**F Fashion News** . . . Intriguing little scuffs in transparent perforated Vinylite plastic with rayon faille platform and wedge heel. Extra flexible cushioned insole. Leather sole.  
• C (medium) width, sizes 4 to 8. Half sizes, too. *State size.* Shpg. wt. 1 lb.  
15 N 3763—Wine (dark red)  
15 N 3764—Black  
15 N 3762—Blue . . . . . Pair \$3.30

**G Gift for a Bride** . . . or any lovely lady on your list. Lustrous rayon satin slipper, lovely with house coats or negligees. Knotted rayon satin vamp trim. Woven rayon covered cushion platform. Leather sole.  
• C (medium) width, sizes 5 to 9. Half sizes, too. *State size.* Shipping wt. 1 lb.  
15 N 3744—Wine (dark red)  
15 N 3743—Blue . . . . . Pair \$2.47

**H Two-tone Ballet Slipper** . . . for your most feminine moments . . . Striped rayon velvet with contrasting color covering on platform and heel. Black rayon cord tie. Leather sole.  
• C (medium) width, sizes 4 to 9. No half sizes. *State size.* Shpg. wt. 1 lb.  
15 N 3699—Red  
15 N 3698—Royal (medium blue)  
15 N 3697—Light blue . . . . . Pair \$2.50

**J Give Her Colorful Beauty** . . . for her stay-at-home leisure hours. Woven rayon open toe slipper in rich wine red or soft blue, dressed up with a cuff of lovely white fur. Leather sole. Why not have a pair in each color?  
• C (medium) width, sizes 4 to 9. Half sizes, too. *State size.* Shipping wt. 1 lb.  
15 N 3647—Wine (dark red)  
15 N 3646—Medium blue . . . . . Pair \$2.19

**K Harlequin Scuffs** . . . gleaming rayon satin; two large rayon pompons in contrasting color perch pertly on the broad vamp band. Buoyant platform, wedge heel. Leather sole.  
• C (medium) width, sizes 4 to 8. Half sizes, too. *State size.* Shpg. wt. 1 lb.  
15 N 3803—Light blue  
15 N 3805—Black  
15 N 3804—Medium blue . . . . . Pair \$2.49

**L Lovely New Rayon Faille Slipper** . . . Row of tiny box plaiting extends around the collar to form a loop design on the vamp. Pillow-soft platform with leather sole.  
• C (medium) width, sizes 4 to 9. Half sizes, too. *State size.* Shpg. wt. 1 lb.  
15 N 3765—Red  
15 N 3767—White  
15 N 3766—Black . . . . . Pair \$2.98

**M Fluffy White Fur** . . . trims this soft felt slipper, embroidered in pretty multi-color rayon. Nice with wool robe or housecoat. Softly comfortable padded leather sole.  
• C (medium) width, sizes 4 to 9. No half sizes. *State size.* Shpg. wt. 1 lb.  
15 N 3627—Wine (dark red)  
15 N 3626—Royal (medium blue)  
15 N 3628—Black (not illus.). Pr. \$1.84

**HOW TO ORDER SLIPPERS** . . . Order slippers in same size as your shoe wherever slippers are listed in that size. If slipper comes in whole sizes only and you wear a half size shoe, order as follows: for A, B and C shoe widths, order slipper *half size smaller* than your shoe. For D and E shoe widths, order slipper *half size larger* than your shoe.

THE RIGHT WAY  
TO SAY  
WOMEN'S  
SHOES



M \$3.69



P \$2.49



V \$3.29



T \$2.49



R \$3.69



X \$3.15



W \$2.99

Slippers and scuffs she'd choose for herself  
Trainloads of slippers; styles for every lady

**N** Glamour Scuffs . . . to make her feet "purr". Rayon faille with fluffy marabou. Platform, wedge heel, elasticized strap, leather sole.

• C (medium) width, sizes 4 to 9. Half sizes, too. *State size.* Shpg. wt. 1 lb.  
15 N 3609—Bright red  
15 N 3608—Medium blue  
15 N 3610—Black . . . . . Pair \$3.69

**V** Electrified Shearling Scuff . . . Furry-soft, warm as toast. Cushion platform and wedge heel covered with matching rayon faille. Leather sole.

• C (medium) width, sizes 4 to 9. Half sizes, too. *State size.* Shpg. wt. 1 lb.  
15 N 3894—Blue  
15 N 3897—White  
15 N 3895—Red . . . . . Pair \$3.29

**P** Feminine Scuffs . . . put a world of beauty at her feet. Colorful rayon satin with allover white bell design. Rayon faille platform, leather sole.

• C (medium) width, sizes 4 to 9. No half sizes. *State size.* Shpg. wt. 1 lb.  
15 N 3801—Red  
15 N 3800—Blue  
15 N 3802—Black . . . . . Pair \$2.49

**W** Wonderful Gift . . . genuine moccasin; crushed leather, shearling lined. No inside seams, smooth and soft. Durable extra leather sole.

• C (medium) width, sizes 4 to 9. No half sizes. *State size.* Shpg. wt. 1 lb.  
15 N 3711—Brown  
15 N 3706—Red  
15 N 3705—Blue . . . . . Pair \$2.99

**R** So Lovely . . . she can wear it with formals. All straps and nail-head studded bands. Rayon faille, platform, wedge heel. Leather sole.

• C (medium) width, sizes 5 to 9. Half sizes, too. *State size.* Shpg. wt. 1 lb.  
15 N 3776—Blue  
15 N 3777—Wine (dark red)  
15 N 3778—Black . . . . . Pair \$3.69

**X** Gay Rayon Satin Slipper . . . with a tracing of gold color rayon in a flower design. Rayon faille covered cushion platform. Leather sole.

• C (medium) width, sizes 4 to 9. Half sizes, too. *State size.* Shpg. wt. 1 lb.  
15 N 3751—Black  
15 N 3750—Wine (dark red)  
15 N 3749—Blue . . . . . Pair \$3.15

**T** Pastel Scuffs . . . to give to yourself or somebody nice. Striped rayon velvet touched up with fluffy white fur. Pillow-soft platform, elasticized back strap. Leather sole.

• C (medium) width, sizes 4 to 8. No half sizes. *State size.* Shpg. wt. 1 lb.  
15 N 3603—Light blue  
15 N 3604—Pink . . . . . Pair \$2.49

**NOTE:** Please see "How to Order" information on the opposite page before ordering these slippers

Due to slight variations, the fibre content of felt is not stated in this catalog, but as required by the Wool Products Labeling Act, is marked plainly on all felt slippers.

Children's Biltwels; bright merry-go-round colors  
 Trainloads of slippers . . . at Sears money-saving prices



H \$2.49



G \$2.19



F \$1.39



N \$1.37



M \$1.99



L \$1.00



K \$1.30



W \$2.98



J \$2.50



V \$1.39



T 99c



R \$2.99



Z \$1.29



P \$1.35



X \$1.69



## Infants' and Children's Slippers illustrated on opposite page

**F** Youngster's Zip Boot . . . all natural color shearling, with fuzzy side out, smooth side in to cuddle foot. Soft leather sole. Little folks will love this style.  
• Wide width. Sizes 6, 7, 8, 9, 10, 11, 12, 13, 1, 2. No half sizes. *Please state size.* Shpg. wt. 10 oz. 15 N 975—Natural. . . . . Pair \$1.39

**H** Baby's Bunny Slipper . . . bright pink eyes in "stand-up" bunny head. Soft, cozy shearling; shearling sole lining. Padded leather sole. Fine for the tots on your list.  
• Wide width. Sizes 4, 5, 6, 7, 8, 9, 10 and 11. No half sizes. *Please state size.* Shpg. wt. 10 oz. 15 N 951—Natural. . . . . Pair \$2.49

**K** Gay Felt Bootie . . . cut low with woven rayon cuff. Easy-working zip-up front, wedge heel, down-soft padded sole. Good quality at a low price.  
• Wide width. Sizes 5, 6, 7, 8, 9, 10, 11, 12, 13, 1, 2, 3. No half sizes. *State size.* Shpg. wt. 10 oz. 15 N 965—Blue  
15 N 966—Red. . . . . Pair \$1.30

**M** All Sturdy Leather . . . crushed leather uppers, heavy leather sole. Contrasting color vamp trim.  
• Wide width. Sizes 8, 9, 10, 11, 12, 13, 1 and 2. No half sizes. *Please state size.* Shpg. wt. 10 oz. 15 N 925—Navy, red trim  
15 N 926—Brown, dark brown trim. Pair. . . . . \$1.99

**P** Dainty Embroidery . . . covers all but the plain cuff of this rayon slipper. Quilted insole. Low heel, comfortable soft sole.  
• Wide width. Sizes 11, 12, 13, 1, 2 and 3. No half sizes. *Please be sure to state size wanted.* Shpg. wt. 10 oz. 15 N 939—Blue  
15 N 940—Wine (dark red). Pr. \$1.35

**T** Colorful Felt Bootie . . . keeps little feet warm as toast. Rayon tassels add a gay note. Pinked center seam. Soft padded sole.  
• Wide width. Sizes 7, 8, 9, 10, 11, 12, 13 and 1. No half sizes. *Please state size.* Shpg. wt. 10 oz. 15 N 931—Blue, red trim  
15 N 932—Red, blue trim. . . . . Pair 99c

**W** Sleepy-Time Pet . . . woven wool, contrasting color cord trim. Zip-up front. Soft sponge rubber platform, leather sole.  
• Wide width. Sizes 12, 13, 1, 2 and 3. No half sizes. *Please be sure to state size wanted.* Shpg. wt. 10 oz. 15 N 902—Light blue, dk. blue trim  
15 N 903—Red. . . . . Pair \$2.98

**Y** Our Finest . . . for little feet. "Zip" boot of supple top quality leather. Brown shearling collar, natural shearling lining to snuggle the foot. Sturdy leather sole.  
• Wide width. Sizes 11, 12, 13, 1, 2 and 3. No half sizes. *State size.* Shipping weight 10 ounces. 15 N 955—Brown. . . . . Pair \$4.40

**G** Baby Pink, Baby Blue . . . infant's genuine moccasin of supple crushed leather. Warm shearling cuff and lining. Leather sole.  
• Wide width. Sizes 5, 6, 7, 8, 9, and 10. No half sizes. *Please state size.* Shipping weight 10 ounces. 15 N 947—Blue, pink trim  
15 N 948—Pink, blue trim. Pr. \$2.19

**J** Color Bright Moccasin . . . red or blue leather; soft shearling lining and cuff, genuine moccasin construction. Leather sole.  
• Wide width. Sizes 11, 12, 13, 1, 2, and 3. No half sizes. *State size.* Shipping weight 10 ounces. 15 N 949—Blue  
15 N 950—Red. . . . . Pair \$2.50

**L** Kiddies' Rayon Plush Slipper . . . in storybook colors. Choose royal blue or bright red, wool lined for added warmth. Long wearing leather sole.  
• Wide width. Sizes 6, 7, 8, 9, 10, 11, 12, 13, 1, 2 and 3. No half sizes. *State size.* Shpg. wt. 10 oz. 15 N 929—Royal (medium blue)  
15 N 930—Red. . . . . Pair \$1.00

**N** Ankle-High Majorette . . . to suit little folks' tastes. Blue or red felt, contrasting color trim.  
• Wide width. Sizes 7, 8, 9, 10, 11, 12, 13 and 1. No half sizes. *Please state size.* Shpg. wt. 10 oz. 15 N 933—Blue, red trim  
15 N 934—Red, blue trim. Pair. . . . . \$1.37

**R** Beautiful Slipper . . . durable, too, in genuine red leather or shiny black plastic. Rayon faille covered platform, leather sole.  
• Wide width. Sizes 8, 9, 10, 11, 12, 13, 1, 2 and 3. No half sizes. *Please state size.* Shpg. wt. 10 oz. 15 N 993—Black, red trim  
15 N 992—Red, blue trim. Pr. \$2.99

**V** Merry Moc-Type . . . Made in Canada. Smooth suede with Indian bead trim. Cuddly black fur collar. Padded leather sole.  
• Wide width. Sizes 11, 12, 13, 1 and 2. No half sizes. *Please state size wanted.* Shipping wt. 10 oz. 15 N 998—Royal (medium blue)  
15 N 999—Dark red. . . . . Pair \$1.39

**X** Bright Two-Tone Felt Slipper . . . daintily pinked . . . gay rayon tassels children love. Padded sole. Wedge heel.  
• Wide width. Sizes 9, 10, 11, 12, 13, 1, 2 and 3. No half sizes. *State size.* Shipping weight 1 lb. 15 N 979—Blue  
15 N 980—Red. . . . . Pair \$1.69

**Z** Supple Brown Leather Slipper . . . with cunning bunny head on vamp. Lining and cuff of natural color shearling, so warm and soft. Flexible leather sole.  
• Wide width. Sizes 5, 6, 7, 8, 9, 10, 11, 12, 13, 1, 2, 3. No half sizes. *State size.* Shpg. wt. 10 oz. 15 N 904—Brown. . . . . Pair \$1.29



**FF** \$1.25

**GG** \$1.79

**JJ** \$2.15

**HH** \$1.96

**KK** \$2.08

**LL** \$3.98

### Gifts for practical-minded women Trainloads of slippers, comfort for all

**FF** Foot-Snuggling Felt Slipper . . . so comfortable to slip into for your leisure hours. Ornament on vamp. Black leather tip. Padded sole.  
• C (medium) sizes 4, 5, 6, 7, 8, 9. No half sizes. *State size.* Shpg. wt. 1 lb. 15 N 3621—Wine (dark red)  
15 N 3620—Blue  
15 N 3622—Gray. . . . . Pair \$1.25

**HH** Like Nothing on Your Foot . . . yet serviceable. Soft leather vamp, imitation leather back part. Low heel, comfortable padded sole.  
• C (med.) sizes 4, 5, 6, 7, 8, 9. No half sizes. *State size.* Shpg. wt. 1 lb. 15 N 3899—Brown  
15 N 3898—Black. . . . . Pair \$1.96

**KK** Pillow-Soft Slipper . . . cuddles your foot in deep natural color shearling. Center seam and ornament of tan leather. Brown and tan trim. Pliable soft leather sole.  
• C (med.) sizes 5, 6, 7, 8 and 9. No half sizes. *State size.* Shpg. wt. 1 lb. 15 N 3883—Natural. . . . . Pair \$2.08

**GG** Foot-Pampering Felt Slipper . . . for chilly mornings around the house. Center seam, turndown collar. Leather sole. Leather heel.  
• C (med.) sizes 4 to 9, including half sizes. *State size.* Shpg. wt. 1 lb. 15 N 3601—Wine (dark red)  
15 N 3600—Blue  
15 N 3602—Brown. . . . . Pair \$1.79

**JJ** Fine Two-Tone Felt Slipper . . . so colorful and comfortable. Blue with light blue trim or wine with pink trim. Leather sole and heel.  
• C (med.) sizes 4, 5, 6, 7, 8 and 9. No half sizes. *State size.* Shpg. wt. 1 lb. 15 N 3732—Wine (dark red)  
15 N 3731—Blue. . . . . Pair \$2.15

**LL** Genuine Crushed Leather . . . deep shearling lined for your luxurious comfort. Soft natural shearling cuff keeps ankles warm as toast. Durable leather sole and low heel.  
• C (med.) sizes 4, 5, 6, 7, 8 and 9. No half sizes. *State size.* Shpg. wt. 1 lb. 15 N 3707—Brown. . . . . Pair \$3.98

Because of slight variations, the fiber content of women's and children's felt and wool slippers is not specified in the catalog; but it is plainly marked on the merchandise as required by the Wool Products Labeling Act.

**HOW TO ORDER WOMEN'S AND CHILDREN'S SLIPPERS:**  
Order same size as shoe if your size is listed. If slipper comes in whole sizes only and child wears a half size, order next full size for children. For women's A, B, C shoe widths, order half-size smaller than shoe. For D, E shoe widths, order half-size larger than shoe.

**Kerrybrooke**

THE RIGHT WAY  
TO SAY

**WOMEN'S  
SHOES**



**F** \$1.48



**G** \$4.39



**H** \$4.98



**J** \$2.15



**K** \$1.99



**L** \$1.79



**M** \$2.24

**Cozy Foot-Coddlers . . . under the tree on Christmas Morning**

**Trainloads of slippers . . . all wonderful gifts . . . for Mother, Aunt, or Sister Sue**

**F** Warmly Comfy . . . felt boot in a deep rich wine (dark red) or blue. Fluffy shearling collar . . . comes up close around your ankles to ward off chilling drafts. Serviceable leather sole, comfortable 1-inch heel.  
• D (medium wide) sizes 4, 5, 6, 7, 8, 9. No half sizes. *State size.* Shpg. wt. 1 lb.  
15 N 3835—Blue  
15 N 3836—Wine (dark red). Pair \$1.48

**K** Captivating Rayon Faille Slipper . . . shimmering cuff of matching satin over instep. Utterly feminine, very practical. Leather sole, low heel.  
• C (medium) 4, 4½, 5, 5½, 6, 6½, 7, 7½, 8, 8½, 9. *State size.* Shpg. wt. 1 lb.  
15 N 3867—Blue  
15 N 3868—Wine (dark red). Pair \$1.99

**G** For Winter Nights at Home . . . suede leather bootee with matching electrified shearling cuff. Natural shearling lining pillows your foot. New plastic trim. Leather sole, low heel. Your choice of wine or blue.  
• Wide width in sizes 5, 6, 7, 8, 9. No half sizes. *State size.* Shpg. wt. 1 lb.  
15 N 3709—Blue  
15 N 3710—Wine (dark red). Pair \$4.39

**L** Her Favorite Gift . . . multicolor woven cotton slipper, looks like hand-crochet. Cushiony platform comfort. Low wedge heel. Leather sole.  
• C (medium) width sizes 4, 5, 6, 7, 8, 9. No half sizes. *State size.* Shpg. wt. 1 lb.  
15 N 3877—Dark multicolor  
15 N 3876—Light multicolor. Pair \$1.79

**H** Off and On in the Wink of an Eye . . . pliant brown kidskin "zip" boot with furry matching shearling collar to cuddle your ankles. Snug, cushiony shearling lining . . . natural color. Long wearing leather sole and low rubber heel.  
• D (medium wide) sizes 5, 6, 7, 8, 9. No half sizes. *State size.* Shpg. wt. 1 lb.  
15 N 3708—Brown. . . . . Pair \$4.98

**M** Moc-type Feel-Wonderfuls . . . in woven cotton and rayon crepe. Wide matching band over vamp. Favored wedge heel, leather sole.  
• C (medium) 4, 4½, 5, 5½, 6, 6½, 7, 7½, 8, 8½, 9. *State size.* Wt. 1 lb.  
15 N 3651—Wine (dark red)  
15 N 3650—Blue. . . . . Pair \$2.24

**J** Slipper Charmer . . . in lovely rayon faille. Unadorned smartness for your at home hours. Open toes. Sturdy leather soles and 1-inch heels. Three colors to choose from.  
• C (medium) in sizes 5, 5½, 6, 6½, 7, 7½, 8, 8½, 9. *State size.* Shpg. wt. 1 lb.  
15 N 3834—Wine (dark red)  
15 N 3837—Black  
15 N 3833—Blue. . . . . Pair \$2.15

Please see "How to Order" on opposite page before ordering slippers.  
Due to slight variations, the fibre content of felt and wool is not stated in the catalog, but as required by the Wool Products Labeling Act, is marked on all felt and wool slippers.

They're just what he'd buy: Gold Bond Slippers  
 Trainloads of slippers to please any man's fancy



F \$4.80

Luxurious grained leather, warm lined

F He will say "thank you," and mean it, when he sees these handsome slippers. Genuine leather uppers, lined with soft, warm sheep shearling. Soft, leather-covered platform underneath the foot gives restful support. Leather sole. Uppers have bound edges. A carefully made slipper that looks good and feels wonderful. For any man, on any gift occasion.

• Men's sizes 7, 8, 9, 10, 11. No half sizes. Wide width. *State size.* Shipping weight 1 lb. 12 oz.  
 67 N 3911—Brown leather . . . . . Pair \$4.80



G \$5.00

G Luxurious ankle-high Mukluk Slipper...brown sheepskin uppers, lined with soft, warm shearling. Brown electrified shearling cuff. Leather sole.

• Men's sizes 6, 7, 8, 9, 10, 11. No half sizes. Wide width. *State size.* Shipping weight 1 pound 4 ounces.  
 67 N 3969—Brown . . . . . Pair \$5.00



H \$4.95

H Genuine Hand-Sewed Moccasin. Rich natural tan leather. Molded when they're made to hold shape of the foot. Leather tie. Made in Canada.

• Men's sizes 6, 7, 8, 9, 10, 11. No half sizes. Wide width. *Please state size.* Shipping weight 14 ounces.  
 67 N 3973—Natural tan. Pair \$4.95



J \$2.98

J Like walking on a down comfort flexible as your foot; warm as a wool blanket. Soft sponge rubber platform, leather sole, thick wool plaid upper.

• Men's sizes 6, 6½, 7, 7½, 8, 8½, 9, 9½, 10. Wide width. *Please state size.* Shipping weight 14 ounces.  
 67 N 3945—Blue plaid . . . Pair \$2.98



K \$1.69

HOW TO ORDER MEN'S SLIPPERS: order same size as shoes. If slipper comes in whole sizes only and you wear a half-size shoe, order as follows: for C, D, or E shoe widths, order slipper half size larger. For A, AA, or B widths, order half size smaller.

K Low priced solid comfort. Padded leather sole and heel. Counter helps slipper to keep its shape, last longer. Warm wool felt uppers.

• Men's sizes 6, 7, 8, 9, 10, 11. No half sizes. Wide width. *State size.* Shipping weight 1 pound 3 ounces.  
 67 N 3980—Wine (dk. red). Pr. \$1.69

Comfort comes first . . . with him, with Gold Bond Slippers

Trainloads of slippers for your gifts

**Gold Bond**

THE RIGHT WAY  
TO SAY

**MEN'S SHOES**



**L** \$1.64



**M** \$4.35



**N** \$2.89



**P** \$1.69



**R** \$1.29



**W** \$2.15



**V** \$2.69



**T** \$3.98



Due to slight variations, the fiber content of felt and wool slippers is not stated in the catalog; it is marked plainly on the merchandise as required by the Wool Products Labeling Act.

**L** He'll think they cost much more. Easy on and off. Everett style slipper; brown imitation leather upper. Leather sole and rubber heel.

• Men's 6 to 11; 12. Half sizes, too. Wide width. *State size.* Shpg. wt. 1 lb. 8 oz. 67 N 3914—Brown . . . . Pair \$1.64

**M** Keep feet snug, warm on coldest mornings. Shearling lining, shearling cuff turns up for extra warmth. Leather upper and sole, rubber heel.

• Men's sizes 6 to 12. No half sizes. Wide width. *State size.* Shpg. wt. 1 lb. 10 oz. 67 N 3925—Brown . . . . Pair \$4.35

**N** Platform style and comfort . . . handsome lounging slipper, the right gift for the man you want to please. Imitation leather upper, leather sole.

• Men's 7 to 11. No half sizes. Wide width. *State size.* Shpg. wt. 1 lb. 4 oz. 67 N 3935—Brown . . . . Pair \$2.89

**P** Sure fire hit for the man on your gift list; for you, too. Hi-lo shearling cuff keeps ankles warm. Brown felt, soft padded leather sole, heel.

• Men's sizes 6 to 11. No half sizes. Wide width. *State size.* Shpg. wt. 1 lb. 67 N 3901—Brown . . . . Pair \$1.69

**R** Easy-going moc-type slipper . . . for comfortable evenings at home. Upper of brown felt, collar lacing adjusts for snug fit. Soft padded leather sole.

• Men's sizes 7 to 11. No half sizes. Wide width. *State size.* Shipping wt. 1 lb. 67 N 3902—Brown . . . . Pair \$1.29

**T** Extra warm, extra comfortable, extra good-looking. Genuine hand-sewn moccasin, added leather outsole. Shearling lined, Hi-lo shearling cuff.

• Men's sizes 6 to 12. No half sizes. Wide width. *State size.* Shpg. wt. 13 oz. 67N3908—Brown leather. Pr. \$3.98

**V** Zip front comfy boot . . . fits snugly, holds warmth in. Thick, warm wool upper. Cushioned platform gives something extra in comfort. Leather sole.

• Men's sizes 6 to 12. No half sizes. Wide width. *State size.* Shpg. wt. 1 lb. 8 oz. 67 N 3941—Brown . . . . Pair \$2.69

**W** So comfortable and relaxing you won't want to take them off! Lounging slippers of practical dark brown felt. Leather soles and rubber heels.

• Men's sizes 6 to 12. No half sizes. Wide width. *State size.* Shpg. wt. 1 lb. 6 oz. 67 N 3977—Brown . . . . Pair \$2.15

New zest for his "take-it-easy" time . . .

Men's foot-relaxing Gold Bond Casuals

Don't skimp on their Christmas . . . use Sears Easy Terms



Gold Bond

THE RIGHT WAY  
TO SAY

MEN'S SHOES



Casually yours . . . the  
right shoe for easy doin's

\$6.20

The youthful approach in a casual shoe for men of all ages. Handsomely designed in moc style for downright soft shoe comfort. No laces to bother with . . . no pressure over the instep to annoy you . . . roomy, for foot wiggling delight. Leather covered platform sole . . . you'll feel like you're stepping along on an innerspring mattress . . . gives mile upon mile of "shockless" walking pleasure. Lightweight and supple. Practical . . . good for sportswear or general all around wear. Glossy, rich tan leather uppers. Leather heel built on to platform sole for added arch ease. Way ahead in the field of smartly fashioned casuals . . . right for you men of good taste who insist on a shoe that combines comfort with good looks . . . as serviceable as it is handsome.

• D (medium wide) in men's sizes 6, 6½, 7, 7½, 8, 8½, 9, 9½, 10, 10½. Please be sure to state size. Shipping weight 2 pounds 6 ounces. 67 N 4209—Tan. . . . . Pair \$6.20



\$6.95

If he works hard all day, he . . . and his feet . . . need to relax. Give him a pair of these genuine hand-sewed moccasins. Deep, warm shearling lined. Light natural tan leather, molded when it's made, to hold its shape. Extra smooth leather outsole. Leather drawstring for easy adjustment. Shearling cuff turns up for extra comfort and warmth around the ankles. Made in Canada. • Men's sizes 6, 7, 8, 9, 10. Wide width. Please state size. Shipping weight 1 pound 2 ounces.

67 N 3974—Tan. . . . . Pair \$6.95



\$7.00

He'll think of you every time he slips into these restful casuals. Comfortable as slippers, so handsome he'll wear them everywhere. Mellow, gleaming saddle-tan leather uppers. Elastic side gores make them hug the ankles, yet they slip on or off in a second. Leather outsole, cushioned platform. Leather heel. Leather insole. • D (medium wide) in men's sizes 6, 6½, 7, 7½, 8, 8½, 9, 9½, 10, 10½, 11. State size. Shipping weight 2 pounds 10 ounces.

67 N 4428—Tan. . . . . Pair \$7.00



\$5.35

Handsome moc-style lounge: solidly built for hard outdoor use . . . favorites for informal wear everywhere. Men like their easy-on, easy-off design, their extra comfort. Fine quality brown leather uppers. Top-quality dress shoe construction: Goodyear welt, solid leather insole, leather outsole and heel. Roomy wall toe.

• D (medium wide) in men's sizes 6, 6½, 7, 7½, 8, 8½, 9, 9½, 10, 10½, 11. State size. Shipping weight 2 pounds 8 ounces.

67 N 4208—Brown. . . . . Pair \$5.35



**Kerrybrooke**  
MADE IN CANADA  
 THE RIGHT WAY  
 TO SAY  
**WOMEN'S  
 SHOES**



**For gifts! For you! Women's boots . . . styled to highlight the winter scene**

Zero days are fun in Snow Boots  
 For school, sports, or street wear  
 Deep, toasty-warm fleece lining

Cold feet? No! Not in Sleigh Boots!  
 Soft, winter-warm raccoon leg lining  
 Foot-cuddling shearling foot lining

Here's one way to cheat Old Man Winter . . . tuck your feet into these warm-lined snow boots. Once you've tried them on you'll wonder just how you ever did without them on those blustery, zero-y winter days. They're right for campus wear, right for street or sports wear, right for all outdoor winter activity. Natural shearling cuff cuddles your ankle . . . can be turned up high for added protection. Inside of boot is cotton fleece lined to keep your feet snug and cozy, insole of cushiony shearling. You can slip them on right over your stockings. Extra roomy wall toe last. Upper of smooth brown leather. Rubber sole and heel.

• Women's and girls' sizes 5, 5½, 6, 6½, 7, 7½, 8. Wide width. Order regular shoe size. Shipping weight 2 pounds 10 ounces.  
 15 N 2092—Brown leather. . . . . Pair \$4.98

**\$4.98**

You'll be chasing the chills in style when you step out in Sleigh boots! Whether you're a campus co-ed or a busy homemaker you'll want a pair . . . you'll want them for sports, for going-to-the-store, for school, for all wintertime funtime. Made in Canada where warm zero-weather footwear is a specialty with makers. Wear boots right over your stockings . . . feel the cozy warmth of the raccoon leg lining, snuggle your toes into the cuddly shearling foot lining. Wall toe last . . . gives you plenty of toe room. Good-looking uppers of smooth, flexible, fine quality brown leather. Long-wearing, non-marking brown rubber sole and heel.

• Women's and girls' sizes 5, 5½, 6, 6½, 7, 7½, 8, 8½, 9. Wide width only. Order regular shoe size. Shipping weight 2 lbs. 6 oz.  
 15 N 2080—Brown leather. . . . . Pair \$9.98

**\$9.98**

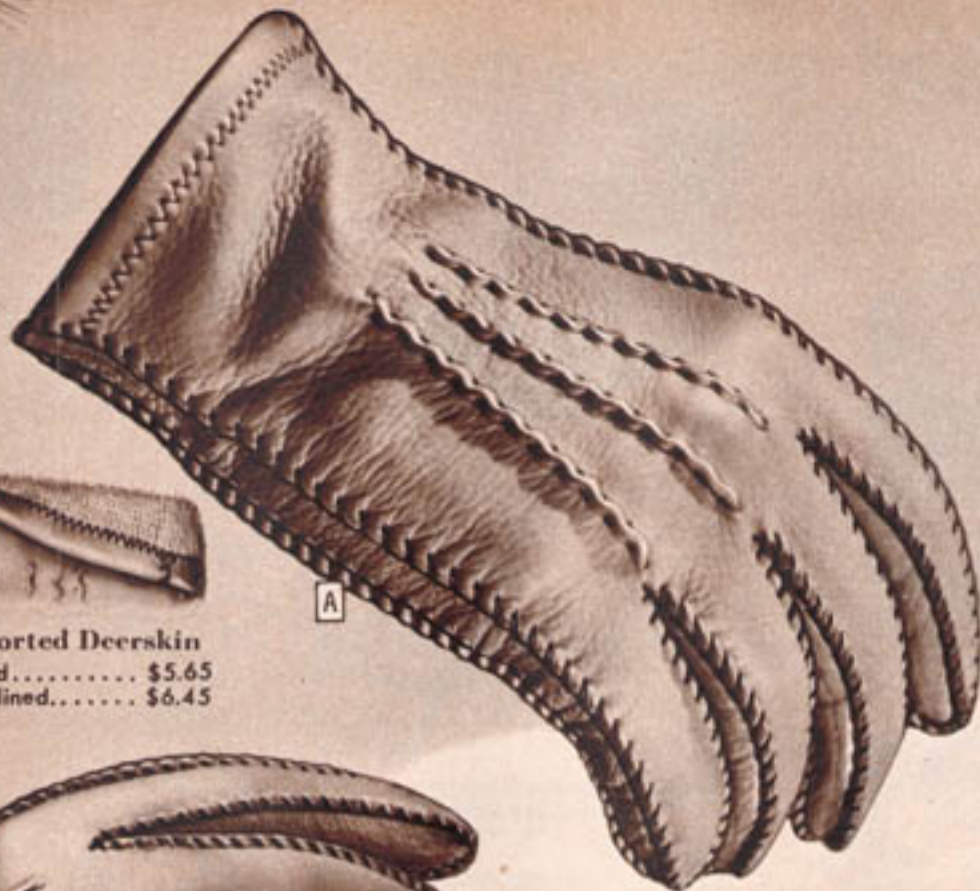
**Pilgrim**

THE RIGHT WAY  
TO SAY

**MEN'S  
FURNISHINGS**



**Imported Deerskin**  
Unlined..... \$5.65  
Wool lined..... \$6.45



A



B



**Imported Capeskin**  
Unlined..... \$4.35  
Wool lined..... \$5.35



C

**Imported Cabretta**  
Wool lined..... \$6.45

**Free action "sidewalls" . . .  
best fitting, smartest looking  
of all Pilgrim Dress Gloves**

Bound to be favorites of the most critical man on your gift list, especially if he demands out-of-the-ordinary quality, style-rightness and fine craftsmanship.

Pilgrim tailored of superb imported leathers, tanned to a mellow softness and luxurious texture. Sidewall construction (extra piece of leather outlines sides of fingers and glove).

Slip-on style, smartly swaggar stitched, lined or unlined.

**A Imported Deerskin . . . tough and very pliable**

A truly rugged leather in a good looking dress glove you can have either wool lined or unlined. Carefully pattern cut for good fit from wild New Zealand Deerskins, known for their sturdiness and flexibility. Whipstitch sewn; serpentine stitched backs; hemmed tops.

**\$565**

Unlined. Sizes 8, 8½, 9, 9½, 10, 10½. Please state size. Shipping weight 5 oz. 33 N 2416—Medium tan

**\$645**

Seamless wool lining. Sizes small (8-8½); med. (9-9½); large (10-10½). State size. Shpg. wt. 6 oz. 33 N 2557—Medium tan

**B Imported Capeskin . . . smooth, long wearing**

A smart dress glove that's easy to get into and stands up well under day to day wear. Made of fine imported skins, tanned for softness and pliability. Warm knit lining is all wool. Unlined, too, if you prefer. Whipstitched sewn; stagger stitched backs; hemmed tops.

**\$435**

Unlined. Sizes 8, 8½, 9, 9½, 10, 10½. Please state size. Shipping weight 5 oz. 33 N 2417—Med. brown

**\$535**

Wool lined. Sizes small (8-8½); medium (9-9½); large (10-10½). Please state size. Shpg. wt. 6 oz. 33 N 2558—Med. brown

**C Imported Cabretta—Nylon-stitched all around**

Wool lined **\$645**

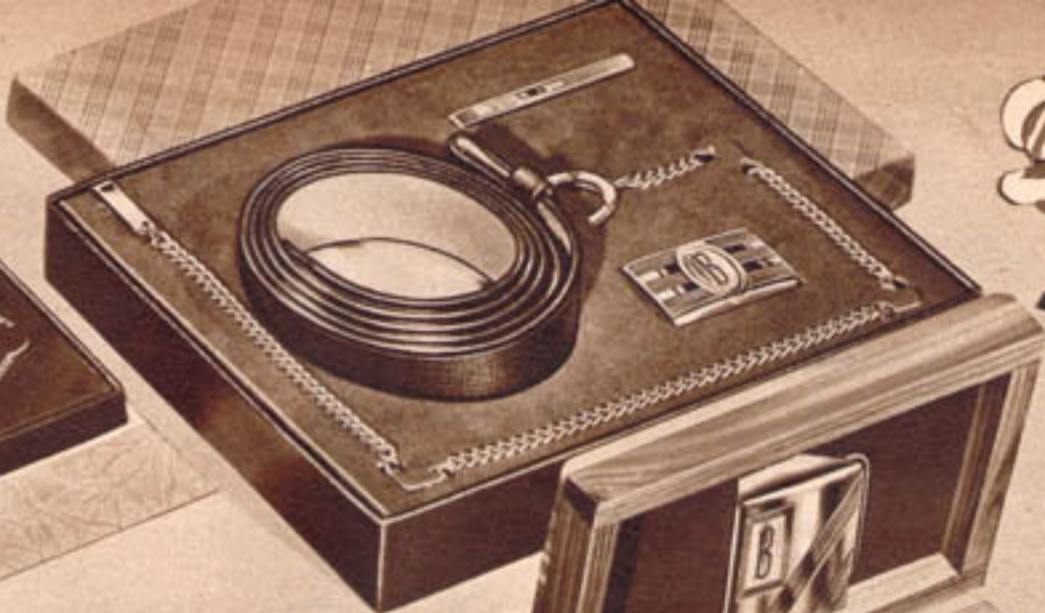
You have to feel this imported leather to believe it could actually be so soft and smooth. Yet it's a real he-man leather able to take plenty of tough wear. It's taken from lambs whose skins are toughened by the hot sun in the equatorial regions of Brazil.

A durable, fine leather such as this deserves equally fine and durable construction, so we've had these gloves stitched all around with Nylon miracle thread. Pattern cut for good fit. Backs are stitched, tops are hemmed. 100% wool, closely knit seamless lining.

Sizes small (8-8½); medium (9-9½); large (10-10½). State size. 33 N 2559 R—Tan or brown (sorry no choice) Shpg. wt. 6 oz.



**A** 4-pc. set \$5.55



**B** 4-pc. set \$3.65

## Pilgrim Gift Belts . . . boxed

**A** Our finest 4-pc. set . . . calfskin belt, gold and silver plated initial buckle, tie clasp, and collar bar. Flat, 1-in. belt is finest mellow calfskin lined with genuine imported pigskin. Gold plated stripes, raised initial on silver plated buckle and tie chain plaque. Plain silver plated tie chain clasp, collar bar. Gift box. Shipping weight set 10 ounces.

Sizes 30, 32, 34, 36, 38, 40, 42, 44-inch waist. State size, print initial.  
33 N 3703—Black 33 N 3704—Brown. Price includes 37c Fed. tax. Set \$5.55

**B** 4-pc. set . . . belt, buckle, key chain, tie clip. 1-in. belt is solid top grain cowhide bridle leather. Gold color polished bronze slide buckle with stamped initial. 24K gold plated brass key chain, tie clip.

Sizes 30, 32, 34, 36, 38, 40, 42, 44-in. waist. State size, print initial. Shpg. wt. set 10 oz. 46c Fed. Tax included.  
33 N 3790—Black  
33 N 3791—Brown. 4-pc. Set \$3.65

**D** Top cowhide, silver plated buckle. 1 3/8-in. top grain hand-boarded cowhide belt; smooth cowhide lined. Bright and satin finish double silver plated slide buckle, stamped initial. Cedar-effect wood gift box. Shpg. wt. set 10 oz. State size, print initial.

Sizes 30, 32, 34, 36, 38, 40, 42, 44-in. waist. 17c Fed. tax included.  
33 N 3757—Black  
33 N 3758—Brown. 2-pc. Set \$3.69

**C** Fine pigskin—hand engraved initial on silver plated buckle. 1-in. genuine pigskin belt lined with smooth top grain cowhide. Double silver plated buckle has striped background with 24K gold plated design. Cedar-effect wood gift box. Shpg. wt. set 10 oz. Please state size, print initial.

Sizes 30, 32, 34, 36, 38, 40, 42, 44-in. waist. 46c Fed. tax included.  
33 N 3785—Suntan  
33 N 3787—Black. 2-pc. Set \$5.44

**E** Cowhide belt, silver plated buckle. 1-inch hand-boarded cowhide belt lined with pig-grained cowhide. Combination silver and gold plated metal slide buckle with one stamped initial. Shpg. wt. set 6 oz.

Sizes 30, 32, 34, 36, 38, 40, 42, 44-in. waist. Please state size and print initial. Price includes 15c Federal Excise tax.  
33 N 3782—Black  
33 N 3783—Rust (reddish brown). 2-piece set \$2.29

All initials available except I, O, Q, U, V, X, Y, Z



**C** 2-pc. set \$5.44



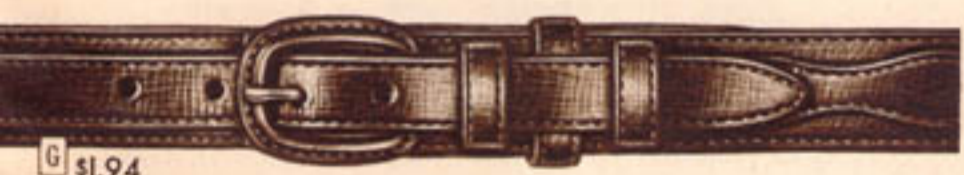
**D** 2-pc. set \$3.69



**E** 2-pc. set \$2.29



**F** \$3.65



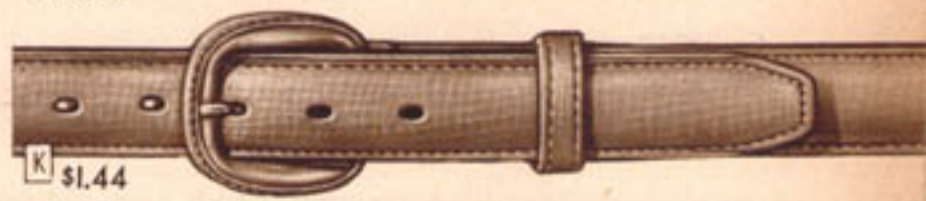
**G** \$1.94



**H** \$2.00



**J** \$1.44



**K** \$1.44



**L** 96c

**F** New Western style—silver plated slide buckle. Embossed leaf, acorn design on full grain 1-in. steerhide belt, cowhide lined. Gold color leaf design on silver plated buckle. Shpg. wt. 5 oz.

Sizes 30, 32, 34, 36, 38, 40, 42, 44-in. waist. Please state size. 31c Fed. tax included.  
33 N 3756—Antique (dull) brown. Each \$3.65

**G** Dress Western Ranger style. 1-in. full grain hand boarded cowhide; cowhide lined. 3/8-in. extra strap. Leather tongue buckle. Shpg. wt. 5 oz.

Sizes 30, 32, 34, 36, 38, 40, 42, 44-in. waist.  
33 N 3743—Black 33 N 3744—Brown  
33 N 3745—Suntan. Please state size. . . . Ea. \$1.94

**H** "Stratoline" plastic—gold plated buckle. Flexible 1-in. clear vinylite plastic with grooved center and streamlined gold plated curved metal buckle. Goes well with any color clothes. Postpaid.

Sizes 30, 32, 34, 36, 38, 40, 42, 44-in. waist.  
33 N 3789—Clear only. Please state size. Ea. \$2.00

**J** Top cowhide—gold color buckle. 1-in. full grain cowhide lined with cowhide. Smart gold color metal tongue buckle. Shpg. wt. each 5 oz.

Sizes 30, 32, 34, 36, 38, 40, 42, 44-in. waist  
33 N 3754—Black  
33 N 3755—Brown. Please state size. . . . Each \$1.44

**K** Padded cowhide—leather covered buckle. 1-in. cowhide belt, cowhide lined. Padded center for soft, rounded effect. For dress or sports wear. Shipping weight each 5 ounces.

Sizes 30, 32, 34, 36, 38, 40, 42, 44-in. waist  
33 N 3712—Suntan 33 N 3715—Black  
33 N 3716—Brown. Please state size. . . . Each \$1.44

**L** Cowhide belt—gold color buckle. 1-inch cowhide belt lined with sueded cowhide. Gold color metal tongue buckle. Shpg. wt. each 4 oz.

Sizes 30, 32, 34, 36, 38, 40, 42, 44-in. waist  
33 N 3752—Brown  
33 N 3753—Black. Please state size. . . . Each 96c



AA  
\$17.50



**Pilgrim**

THE RIGHT WAY  
TO SAY

MEN'S  
FURNISHINGS

BB  
\$8.25

100% virgin wool . . . herringbone weave, broad stripes

AA For the man who "rates" something "extra nice," choose this good looking robe with the herringbone weave and smart, wide stripes. Top quality all new wool fabric is warm and comfortable. Single needle construction, the kind of tailoring used only in the finest robes. Full length wrap-around model with plenty of overlap. Double shawl collar, matching sash, three pockets. Dry clean. Boxed.

\$17.50  
Each

Sizes small (33 to 37-inch chest measure); medium (38 to 42); or large (43 to 46). Please state size wanted. Shipping weight each 2 pounds 14 ounces.

33 N 1960—Navy blue

33 N 1961—Maroon (dark red)

Beacon blanket cloth . . . part wool, plain color trim

BB The all American Beacon cloth robe with harmonizing solid color collar and cuffs added to make it smarter, dressier. Body of robe is soft, comfortable cotton Beacon cloth in ombre (shaded) patterns. Collar and cuffs are part wool flannel (50% reused wool, 31% cotton, 19% rayon). Rayon cord trim on edges, cuffs and three pockets; rayon cable cord sash. Double shawl collar adds warmth across chest. Dry clean. Boxed.

\$8.25  
Each

Sizes small (33 to 37-inch chest measure); medium (38 to 42); or large (43 to 46). Please state size wanted. Shipping weight each 2 pounds 15 ounces.

33 N 1915—Navy blue

33 N 1916—Maroon (dark red)

## Let these luxuriously tailored Pilgrim Robes and Lounge Jackets say "Merry Christmas" for you

Fine fabrics in handsome styles for his leisure hours

(ILLUSTRATED ON OPPOSITE PAGE)

Rayon gabardine . . . smart dressy print

A At home or traveling, it's always "right." That's why this robe makes such a perfect gift. Fine rayon gabardine does justice to the skilled tailoring and brings out the full beauty of the foulard-type print pattern.

\$10.95  
Each

Full length wrap-around model hangs smoothly. Double shawl collar holds shape well. Matching sash, three pockets. Dry clean. Boxed.

Sizes small (33 to 37-inch chest measure); medium (38 to 42); large (43 to 46). Please state size wanted. Shipping weight each 3 lbs.

33 N 1941—Navy blue

33 N 1942—Maroon (dark red)

100% virgin wool Robe . . . neat checked trim

B It's new . . . it's different with the collar, cuffs and sash in assorted small checked patterns. Full length wrap-around model in a weight that's comfortable throughout most of the year.

\$14.50  
Each

Carefully tailored of all new wool flannel that's warm and comfortable without being bulky. Sweeping shawl collar is double for extra warmth across chest. Three pockets. Dry clean. Boxed.

Sizes small (33 to 37-inch chest measure); medium (38 to 42); large (43 to 46). Please state size wanted. Shipping weight each 3 lbs.

33 N 1939—Navy blue

33 N 1940—Maroon (dark red)

Pacific Mills 100% worsted wool flannel

C Premium quality fabric from one of America's leading woolen mills. Woven of all worsted yarns which are tightly twisted from only the longest and strongest fibers of top quality virgin wool. A fabric that has all the warmth of ordinary wool, but is lighter in weight, richer to feel. Still, it has enough body to hang smoothly and drape gracefully.

\$14.50  
Each

Fine tailoring gives careful attention to details. Single needle stitching, the same type of construction used in custom-made robes. Full length, sweeping wrap-around model with plenty of overlap to stay closed. Matching sash, three pockets. Dry clean. Each robe in a box.

Sizes small (33 to 37-inch chest measure); medium (38 to 42); large (43 to 46). Please state size wanted. Shipping weight each 2 lbs. 8 oz.

33 N 1994—Maroon (dark red)

33 N 1995—Navy blue

33 N 1996—Sand (light tan)

33 N 1997—Light blue

Wool Lounging Jacket makes a lavish gift

D Is he hard to please? Does he seem to have just about everything? Then surprise him by giving him one of these luxurious Pilgrim Lounging Jackets . . . comfortable and dressy apparel for pleasant, leisurely evenings at home, even when company drops in. Smart and dashing if he wears it with a scarf . . . neat and good looking over a shirt.

\$11.50  
Each

He'll like the soft smoothness of the virgin wool flannel with the feel and draping qualities of fine broadcloth. He'll appreciate the superlative tailoring. Single needle construction throughout so only one row of stitching shows on the seams as in expensive custom-made jackets.

Wrap-around model with contrasting shawl collar, cuffs and sash. Three pockets. Dry clean. Individually boxed for gift giving.

Sizes small (33 to 37-inch chest measure); medium (38 to 42); large (43 to 46). Please state size wanted. Shipping weight each 2 lbs. 6 oz.

33 N 1938—Wine (dark red) with navy blue trim

33 N 1937—Navy blue with wine (dark red) trim

**How to Measure for Robes and Lounging Jackets.** With shirt on, measure under arms and over shoulder blades. If chest measures between sizes, order larger size. Lengths are in proportion to chest sizes.

This Christmas be as generous as you would like . . . Sears Convenient Easy Payment Plan makes it easy for you. Turn to page 231 for details



A Robe  
\$10.95



B Robe  
\$14.50



C Robe  
\$14.50



D Jacket  
\$11.50





C \$2.94

B \$2.93

A \$2.39

D \$1.88

E \$3.32

F \$2.94

### Men's colorful, warm Pilgrim Mufflers . . . boxed



**A** Printed rayon crepe . . . a firm feeling, drapery fabric with a neat design. Rich, dull finish. About 12x50 in., including knotted fringe ends. Dry cleaning recommended. Shpg. wt. each 6 oz. Colors maroon (dk. red), blue, brown. 33 N 3518—Please state color wanted. **\$2.39**

**B** White rayon crepe . . . dressy, plain. Adds the dazzling white touch against a man's coat collar. Double thickness—drapes well. About 14x50 inches including knotted fringe. Dry cleaning recommended. Shipping weight each 6 oz. 33 N 3517—White only. **\$2.93**

**C** Printed foulards; Jacquard crepes. Bold patterns in better quality rayons (sorry, no choice). About 12x50 inches including knotted fringe ends. Dry cleaning recommended. Shpg. wt. 6 oz. Colors maroon (dk. red), blue, brown. 33 N 3519—Please state color wanted. **\$2.94**

**D** Solid color, all virgin wool. Warm, smart for all around wear. About 12x50 inches including self fringe. Hand wash separately. Shpg. wt. each 7 oz. Colors maroon (dark red), white, canary (light yellow), tan. 33 N 3512—Please state color wanted. **\$1.88**

**G** \$1.91

**E** Glove, muffer set; all virgin wool. Solid color woven muffer about 12x48 in.; knit gloves. Hand washable. Colors maize (yellow), camel (med. tan), maroon (dk. red). Glove sizes small (8), medium (9), large (10). Shpg. wt. set 13 oz. 33 N 3523—Please state color, glove size. **\$3.32**

**F** Imported virgin wool worsted, extra fine, soft. Assorted plaid patterns in a fine weave for comfort and warmth. About 12x50 in. including self fringe. Hand washable. Shpg. wt. each 7 oz. Colors blue, maroon (dk. red), brown. 33 N 3522—Please state color wanted. **\$2.94**

**G** Colorful plaid; all virgin wool. Plaid for color, wool for warmth. Patterns are copied from authentic Scotch designs. About 12x48 in. including self fringe. Hand washable. Shpg. wt. each 7 oz. Colors blue, maroon (dk. red), brown. 33 N 3520—Please state color wanted. **\$1.91**

**H** Homespun type all virgin wool . . . loosely woven, looks hand made. Bold assorted patterns; sharp, bright colors. About 12x50 in. including knotted fringe. Hand wash separately. Shpg. wt. 7 oz. Colors blue, maroon (dk. red), brown. 33 N 3521—Please state color wanted. **\$2.80**

**H** \$2.80



**Pilgrim Ties for every man on your gift list**  
**Rich fabrics in a riot of color for holiday spice**

**A to F** Our Finest Rayons . . . hand painted designs and prints. Patterns that go handsomely with anything in a man's wardrobe. 100% wool wrinkle-resistant lining. Luxurious rayon faced ends. Include yourself on your gift list. Individually boxed. Shipping wt. 3 oz. **\$1.86** Each

- |   |  |  |
|---|--|--|
| <b>A</b> Jacquard Crepe<br>Blue print only<br>33N3945..\$1.86 | <b>B</b> Foulard Print<br>Red only<br>33N3946..\$1.86          | <b>C</b> Foulard Print<br>Blue only<br>33N3948..\$1.86       |
| <b>D</b> Hand Painted Foulard<br>Blue only<br>33N3947..\$1.86 | <b>E</b> Hand Painted Foulard<br>Brown only<br>33N3950..\$1.86 | <b>F</b> Hand Painted Foulard<br>Red only<br>33N3949..\$1.86 |

**G to J** Pure Dye Silk Foulard . . . rarest of gifts. This luxurious fabric underscores the rich coloring, beauty of design; drapes gracefully, knots easily. 100% wool interlining resists wrinkling. Rayon faced ends. Choose silk for "important" gifts. Boxed. Predominating colors red, blue or brown. Shipping weight 3 oz. **\$2.95** Each

- |   |  |   |
|---|--|---|
| <b>G</b> Flame Print Silk<br>State color<br>33N3952..\$2.95 | <b>H</b> Vertical Print Silk<br>State color<br>33N3953..\$2.95 | <b>J</b> Block Print Silk<br>State color<br>33N3951..\$2.95 |
|---|--|---|

**K to T** Rayon Fabrics in patterns for every taste. Modern and classic designs . . . attractive stripes and all over patterns. You'll like them to "give" and to "keep." Foulards and crepes have rayon faced ends; others are hemmed. 100% wool interlining for wrinkle resistance. Individually boxed. Predominating colors red, blue or brown. Shipping weight 3 ounces. **\$1.42** Each

- |   |   |  |  |
|---|---|--|--|
| <b>K</b> Jacquard Crepe Print. State color<br>33N3943..\$1.42 | <b>L</b> Jacquard Crepe Print. State color<br>33N3942..\$1.42 | <b>M</b> Satin Brocade<br>State color<br>33N3936..\$1.42 | <b>N</b> Ribbed Rayon<br>State color<br>33N3931..\$1.42  |
| <b>P</b> Satin Brocade<br>State color<br>33N3935..\$1.42      | <b>R</b> Jacquard Crepe Print. State color<br>33N3941..\$1.42 | <b>S</b> Moire Print<br>Red only<br>33N3944..\$1.42      | <b>T</b> Foulard Print<br>State color<br>33N3937..\$1.42 |

**U to X** Good Rayon Fabrics in smart patterns. 100% wool interlined for wrinkle resistance even at this low price. Foulard ties have rayon faced ends; others are hemmed. A smart tie always makes a good gift. Each one boxed. Predominating colors red, blue or brown. Shipping weight 3 ounces. **94c** Each

- |   |   |   |   |
|---|---|---|---|
| <b>U</b> Foulard Print<br>State color<br>33 N 3930..94c | <b>V</b> Satin Brocade<br>State color<br>33 N 3929..94c | <b>W</b> Novelty Weave<br>State color<br>33 N 3925..94c | <b>X</b> Satin Brocade<br>State color<br>33 N 3928..94c |
|---|---|---|---|



**A** \$8.50



**B** \$6.85



**C** \$7.40

Designed for gift-giving and for living . . .  
**SPORTS SHIRTS** in luxurious all wool fabrics  
 worthy of our finest Pilgrim tailoring

**"Houndstooth" check front**

**A** You can give him real luxury when you give him this outstanding sports shirt. Superbly styled: an up-to-the-minute two-tone combination with a smart jacket effect. **\$8.50**

Luxuriously warm, medium weight, all new wool fabric: distinctive "houndstooth" check front in a soft basket weave with solid brown herringbone sleeves, collar and back. Fine tailoring: convertible collar he'll wear with or without a tie; two roomy pockets. Individually boxed. Dry clean. Shpg. wt. each 1 lb. 12 oz.

Sizes small (14-14½); med. (15-15½); med.-large (16-16½); large (17-17½). *State size.*  
 33N710—Brown combination (as illustrated).

**Solid colors, expertly tailored**

**B** If your man likes rich solid colors, he'll go for this warm practical sports shirt. The medium weight all new wool fabric is comfortable in chilly weather as only wool can be. **\$6.85**

He'll wear it for sports as well as leisure hours and the fine Pilgrim tailoring will rate his approval. The convertible collar is smart open or closed; worn with or without a tie. Regular shirt tail, yoke back. Two large pockets have button flaps. Dry clean. Shpg. wt. 1 lb. 8 oz.

Sizes small (14-14½); med. (15-15½); med.-large (16-16½); large (17-17½). *State size.*  
 33N700—Gold 33N701—Blue 33N702—Tan

**Large plaids; bold and bright**

**C** All the warmth, comfort and color he's always wanted in a sports shirt—and you can give it to him in this fine Scotch-type plaid of soft, medium weight all new wool flannel. Just the shirt for brisk days. **\$7.40**

He'll like the convertible collar either worn casually open or with a tie, and the two large pockets with button flaps. The tails are square cut. Two-button cuffs. Individually boxed. Dry clean. Shpg. wt. 1 lb. 5 oz.

Sizes small (15); medium (16); large (17). *Please state size wanted.*  
 33 N 737—Red and gray plaid  
 33 N 738—Maize (yellow) and brown plaid



**Pilgrim**  
MADE IN U.S.A.  
EST. 1896

THE RIGHT WAY  
TO SAY

**MEN'S  
FURNISHINGS**



Send your wishes for a very merry Christmas

through the gift of fine Pilgrim Sports Shirts

Can be worn for "dress up" with a tie; sporty without

Individually packed  
in smart boxes

50% rayon, 50% cotton . . . pebbly weave

**A** Gift shopping's a cinch for that particular man on your list, for every man will appreciate the smart styling and careful workmanship of this fine Pilgrim shirt. **\$449**

Strictly masculine on all counts: feel, appearance, wearability. It's a firm bodied, soft rayon and cotton blend that resists crushing, wrinkling. Sanforized-Shrunk; won't shrink more than 1%.

Convertible collar can be worn open during your "take-it-easy" hours; closed with a tie for "dress-up" neatness. Back is slightly gathered for roomy comfort. Two large flap pockets. Square cut, "in-or-out" shirt tails. Ocean pearl buttons. Long sleeves. Hand washable.

Sizes small (14-14½-inch neck); medium (15-15½); medium large (16-16½); large (17-17½). Shpg. wt. each 1 lb. Please state size.

33 N 576—Blue 33 N 577—Cream 33 N 578—Maple (med.) tan

10% wool, 90% rayon Plaid Racoma fabric by Brittany

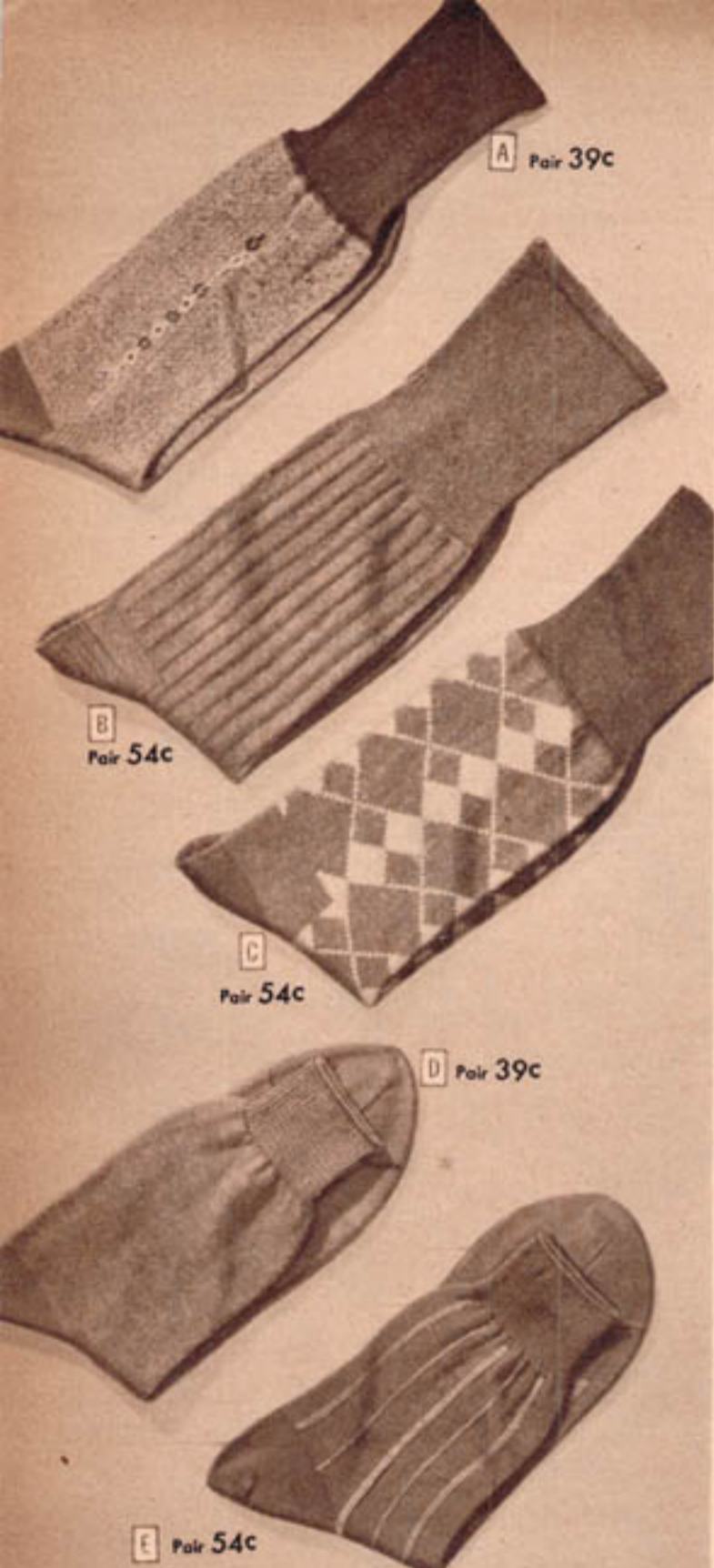
**B** He'll play in it, work in it, wear it for its comfortable as well as handsome tailoring . . . and bless you for such a smart and thoughtful gift! **\$439**

Since every good sports shirt starts with the fabric and works out, we've had this one made of a truly distinctive material . . . a crisp, poplin-type weave, blend of 10% wool and 90% rayon. Wool adds warmth without weight or bulk, makes the fabric fight wrinkling.

Pilgrim tailoring includes; buttoned flap pockets; gleaming ocean pearl buttons; carefully finished convertible collar that looks well open or closed; square-cut, "in-or-out" shirt tails, long sleeves. Hand washable.

Sizes small (14-14½-inch neck); medium (15-15½); medium large (16-16½); large (17-17½). Shpg. wt. each 1 lb. Please state size.

33 N 564—Blue plaid 33 N 565—Tan plaid



**Pilgrim**  
 THE RIGHT WAY  
 TO SAY  
**MEN'S  
 FURNISHINGS**

**Any man, any age will welcome a gift of fine Pilgrim Dress Socks  
 . . . colorful fancies or rich solids as he prefers**

- A** Rayon and Cotton, dock pattern. Rayon gives them a dressy, silvery tone. Knit in a fine gauge. Mercerized cotton heels, toes, tops. Shpg. wt. pr. 3 oz. Colors brown, maroon, navy blue. Sizes 10, 10½, 11, 11½, 12. 86 N 1924—Regular length. Please state size and color. . . . . Pair **39c** 3 pairs \$1.12
- B** Half Wool, novel rib effect. 50% new wool, 50% sturdy cotton combined for warmth and long wear. Cotton reinforced heels and toes. Shpg. wt. pair 4 oz. Colors brown, dk. blue, maroon, oxford gray. Sizes 10½, 11, 11½, 12, 13. 86 N 2102—Regular length. Please state size and color. . . . . Pair **54c** 3 pairs \$1.57
- C** Half Wool, diamond pattern. Body 50% wool, 50% cotton over rayon for warmth, luster, smartness. Tops, toes and heels 50% wool, 50% rayon. (Actual fiber content 45% wool, 45% cotton, 10% rayon.) Shpg. wt. pair 4 oz. Colors brown, maroon, navy blue. Sizes 10½, 11, 11½, 12. 86 N 2134—Regular length. Please state size and color. . . . . Pair **54c** 3 pairs \$1.57
- D** Spun Nylon and Wool over Cotton. Treated to retard shrinkage. 80% cotton, 11% nylon, 9% wool. Nylon and mercerized cotton heels, toes. Shpg. wt. pr. 4 oz. Colors brown, navy blue, white. Sizes 10½, 11, 11½, 12. 86 N 2123—Short length, elastic in cotton tops. State size, color. . . . . Pair **39c** 3 pairs \$1.12
- E** Part Wool, fancy stripes. Lustrous rayon over all wool in the body makes these socks warm and dressy. Strong mercerized cotton top, toe and heel. (Actual fiber content, 44% cotton, 28% wool, 28% rayon.) Shpg. wt. pair 4 oz. Colors dark blue or brown. Sizes 10½, 11, 11½, 12. 86 N 2132—Short length, ribbed top. Please state size, color. . . . . Pair **54c** 3 pairs \$1.57

- If he's hard on socks, give him Pilgrim guaranteed "Positive-Wears," the dress socks with the durability of work socks. 3 pairs must wear 3 months or he gets 3 new pairs free. (Guarantee applies to purchase of 3 pairs of the same size.)
- F** Combed Cotton. Lowest priced "Positive-Wears". Soft, absorbent, seamless for comfort. Double soles, wear resisting 4-ply high spliced heels and toes. Sizes 10½, 11, 11½, 12 and 13. Shipping weight of three pairs 12 ounces. 86 N 1403—Regular length, ribbed tops. Colors dark brown, black or white. Please be sure to state size and color wanted. 86 N 1404—Short length, elastic in tops. Colors gray, dark brown, white. Please state size and color wanted. . . . . **3 pairs 81c**
- G** Mercerized Cotton. Smoother, more lustrous and stronger. Knit of 2-ply yarns (two strands tightly twisted together to form one thread). Toes and high spliced heels are of 4-ply yarns for added wear. Shpg. wt. 3 pairs 12 oz. Colors black, medium gray, white. Sizes 10½, 11, 11½, 12, 13. 86 N 1405—Regular length, ribbed tops. Please state size, color. . . . . **3 pairs 90c**
- H** Nylon and Rayon. Dressiest of our Pilgrim guaranteed-wear socks are knit of sparkling nylon and rayon twisted together. Heels and toes are of smooth mercerized cotton reinforced with nylon. Mercerized cotton tops and soles. Colors black, dark brown, gray, white. Sizes 10, 10½, 11, 11½, 12 and 13. Shipping weight of 3 pairs 12 ounces. Please state size and color wanted. 86 N 1409—Regular length with snug fitting ribbed tops 86 N 1410—Short length with elastic in the tops. . . . . **3 pairs \$1.59**



**A**  
\$3.98

**C**  
\$5.65



**B**  
\$5.98

**D**  
\$5.98



**E**  
\$5.49

**F**  
\$3.73

## Ever welcome Pilgrim 100% Virgin Wool Sweaters

**A** Two-color trim . . . sleeveless pullover. A light-weight sweater a man can use throughout the year. Soft, warm and comfortable. All new wool yarns knit in a smart, wide panel effect. Contrasting two-color stripes are knit in at the V-neck and snug-fitting ribbed bottom. Hand wash separately.

Sizes small (34 to 36-in. chest); medium (38 to 40); large (42 to 44). Please state size. Shpg. wt. 10 oz.

83 N 2140—White  
83 N 2142—Royal (med. bright) blue  
83 N 2141—Maize (yellow) . . . . . Each \$3.98

**B** Novelty pattern . . . long sleeve pullover. Colorful and warm . . . the gift for the man who likes sports clothes. Knit of virgin wool 2-ply yarns (two strands twisted into one thread). Reinforced shoulder seams. Wrists and bottom knit in an elastic rib stitch for trim fit. V-neck. Hand wash separately.

Sizes small (34 to 36-in. chest); medium (38 to 40); large (42-44). Please state size. Shpg. wt. 1 lb. 3 oz.

83 N 2090—Navy blue  
83 N 2091—Camel (medium) tan  
83 N 2092—Red . . . . . Each \$5.98

**C** Panel effect . . . long sleeve pullover. Warm, medium weight. Knit in a vertical panel effect stitch of 100% virgin wool 2-ply yarns (two strands twisted together to form one thread). Neck and shoulder seams taped to resist sagging. Snug ribbed bottom and cuffs. V-neck. Hand wash separately.

Sizes small (34 to 36-in. chest); medium (38 to 40); large (42 to 44). Please state size. Shpg. wt. 1 lb. 2 oz.

83 N 2093—Camel (medium) tan  
83 N 2094—Medium blue  
83 N 2095—Cocoa (medium) brown. Each \$5.65

**D** Zephyr wool . . . dressy coat style. Medium weight sweater that's soft, warm and comfortable because it's fine quality 100% zephyr wool. Panel rib stitch for neat, trim looks. Taped neck, shoulder seams guard against stretching. Two set-in pockets. Polished plastic buttons. Hand wash separately.

Sizes 36, 38, 40, 42, 44, 46 in. chest. Please state size wanted. Shipping weight each 1 lb. 2 oz.

83 N 2122—Luggage (rust) brown  
83 N 2123—Camel (medium) tan  
83 N 2124—Maroon (dark red) . . . . . Each \$5.98

**E** Classic coat style. Virgin wool worsted yarns closely knit in an elastic rib stitch; keeps shape well, yet gives with every move. Heavyweight, warm enough for sports; not too bulky to wear under a suit. Neck, shoulder seams taped. Hand wash separately.

Sizes 36, 38, 40, 42, 44, 46-in. chest. Please state size wanted. Shipping weight each 2 lbs. 4 oz.

83 N 2274—Dark brown heather  
83 N 2273—Oxford (dark) gray  
83 N 2275—Navy blue . . . . . Each \$5.49

**F** Utility sweater coat. Durable wool yarns in a thick cardigan stitch for all around wear. Taped neck, shoulder seams resist sagging. Set-in pockets; leather buttons. Hand wash separately. Shipping weight 1 pound 5 ounces.

Sizes 36, 38, 40, 42, 44, 46-inch chest. State size.

83 N 2201—Luggage (rust) brown  
83 N 2202—Oxford (dark) gray . . . Each \$3.73

**HOW TO MEASURE FOR SWEATERS**  
With vest on, measure under arms, over shoulder blades. If chest measures between sizes, order larger size.





**A** \$5.50



**B** \$1.28



**D** \$4.89



**C** \$7.60



**Boyville and Fraternity Prep gifts for the 'sonny' side of your family . . .**

**Sweaters . . . Jackets . . . Leisure Outfit—styles that are bound to make a hit!**

**100% all wool worsted Pullover**

**A** Everything a fellow wants in a sweater . . . fine all wool heavyweight fabric that's soft and warm—closely knit . . . in a popular ski-type Swiss-like pattern he can't help being keen about. Ribbed crew neck; ribbed cuffs. Hand washable—use gentle Lux.

Sizes small (10-12); medium (14-16); large (18). Please state size. Shipping weight 12 oz.  
**43 N 2340**—Navy blue-jockey red-white  
**43 N 2341**—Maroon-light blue-white  
**43 N 2342**—Green-jockey red-white. . . . . **\$5.50**

**Colorful striped Knit Shirt**

**B** Knit of fine cotton in a neat, comfortable long sleeve style. A gift any young boy will appreciate. Handsome striped patterns. Ribbed crew neck; ribbed cuffs. Choice of three color combinations. Wash separately—use gentle Lux.

Sizes 4, 6, 8, 10, 12, 14 and 16. Please state size wanted. Shipping weight 8 ounces.  
**43 N 4320R**—Blue combination  
**43 N 4321R**—Maroon combination  
**43 N 4322R**—Brown combination. . . . . **\$1.28**

**All wool campus style Leisure Outfit**

Coat **\$6.90**  
 Slacks **\$6.10**

**Fraternity Prep Leisure Coat.** Boy, how he'll love this handsome gift! Solid tone front is soft, smooth finish fabric, expertly woven of 35% new wool and 65% reprocessed wool. Sleeves, collar and back in a lively plaid of 47½% new wool, 15% reprocessed wool, 37½% reused wool. Superb Fraternity Prep tailoring assures easy, comfortable fit and long wear. Latest 4 button style, 3 solid color patch pockets. Rayon lined yoke. 2 colors. Shipping wt. 2 lbs.

State size 10, 12, 14, 16, 18, 20. See below at left.  
**460 N 2325**—Medium tan  
**460 N 2326**—Medium blue. . . . . **\$6.90**

**100% new wool worsted Slacks.** A mighty welcome gift. Teams handsomely with leisure coat described above. Smooth draping all new wool fabric in two smart gabardine shades; retains shape, resists wear and wrinkling. Careful Fraternity Prep tailoring includes zipper front, 4 pleats, dropped belt loops, cuffs. Shpg. wt. 2 lbs.

Sizes 25½ to 32-inch waist. 25 to 33-inch inseam. State waist and inseam. See "How to Measure" at left.  
**460 N 2431**—Medium brown  
**460 N 2434**—Medium blue. . . . . **\$6.10**

Shipped from Chicago. Order from Sears nearest mail order house and pay postage from there.

**Zelan treated Army type poplin Jacket**

**D** Yes, this smart looking, good weight jacket is fully lined—plenty of warmth for damp, chilly days. Made of rugged, wear-resistant Army type cotton poplin, Zelan treated for durable weather protection. Body and sleeves lined with cozy cotton plaid flannel. Zipper front. 4 lower combination pockets include 2 concealed muff type and 2 with flaps. Belted sports back. Shpg. wt. 1 lb. 10 oz.

State size 8, 10, 12, 14, 16, 18. See chart.  
**40 N 3415**—Medium tan. . . . . **\$4.89**

**Aviation style leather and wool**

**C** A thrilling, heart warming gift! Front panels are top grade capeskin leather; back, sleeves and trim are cozy all wool fabric (20% new wool, 80% reprocessed wool). Durable cotton plaid body lining, fully lined sleeves. Zipper front has overlap for extra warmth. 3 deep pockets; sports back. Adjustable side straps, cuffs. Shpg. wt. 2 lbs. 10 oz.

State size 8, 10, 12, 14, 16, 18. See chart below.  
**40 N 3403**—Dark brown with tan leather  
**40 N 3404**—Medium blue with tan leather. . . . . **\$7.60**

**How to Order Boys' Leisure Coat and Jackets**

Measure height without shoes. Measure chest around body over shirt, well up under arms. Refer to chart below and order nearest size.

|                     |          |            |          |            |
|---------------------|----------|------------|----------|------------|
| If Height is inches | 45 to 49 | 50 to 53   | 54 to 57 | 58 to 61   |
| And Chest is inches | 24 to 26 | 25½ to 27½ | 27 to 29 | 28½ to 30½ |
| Order Size          | 8        | 10         | 12       | 14         |
| If Height is inches | 62 to 65 | 65½ to 68  | 68 to 70 |            |
| And Chest is inches | 30 to 32 | 32 to 34   | 34 to 36 |            |
| Order Size          | 16       | 18         | 20       |            |

**How to**

**Measure for Slacks**

**WAIST:** measure natural waistline over trousers without belt. **INSEAM:** measure from crotch along inseam to heel.

# Just in time for Christmas Giving

ARMY SURPLUS

## Reversible Ski-trooper's

PARKA . . . \$5.45

Two layers of fine, Sanforized (won't shrink over 1%), combed cotton poplin—one white, one olive drab—Zelanized for durable water-repellency. Marvelously complete protection. You can be snug and dry in a cold, wet outdoors at amazingly little cost. Read how below.

Light in weight, easy to carry, easy to handle—over the head in a second, either side out, and you're covered from head to knee against rain, sleet, snow, wind or cold. Lay back hood, let hang free for roomy comfort, even over bulky sweaters or mack-inaw coats. Average length, hanging loose, about 38 inches.

When the storms come, you're ready: wolf fur-trimmed hood adjusts around face with drawstring and snap button on back of neck; 3-button neck opening closes with a wide overlap; storm tabs button down over pockets (either side out you have deep pockets, plus access to inner clothing). If desired, pull bottom drawstring tight around waist to shut out wind or wetness from below; you'll have leg freedom, plus protection—see small view.

The army paid many dollars more than our low price to you. It's a bargain—and it's a perfect gift. How about taking it along to a football game? Skiing or skating, chopping wood or feeding the stock; into the woods or into town? Don't wait! Send for it today! Shipping weight 4 pounds 1 ounce.

Sizes: If you have a 38, 40 or 42-in. chest, order size medium; if 44, 46 or 48-in. chest, order size large. State medium or large. 41 N 5166—Reversible white and olive drab parka . . . \$5.45

**How to Measure for Parka and Jackets:** Measure chest around body over garments you'll wear underneath. Keep tape well up under arms, over shoulder blades in back. Number of inches is your size. Measure carefully, make no allowances.



## Hercules pile lined Sportswear

Practical new blouse styles make superb gifts. Both have 100% wool pile linings and water-resistant outer fabrics for maximum comfort and minimum weight

**A** Lightweight Zelan-treated cotton Poplin. **\$9.18**  
Smartly comfortable, yet low priced. Extra warm because of double-faced pile body lining (100% wool pile on both sides of a cotton back that is 40% of entire lining). Sleeve lining is a quilted cotton twill with 100% wool interlining. Sanforized—won't shrink over 1%. Zelan-treated for durable water-repellency. Striped knit collar, cuffs and waistband 21% wool, 21% rayon, 58% cotton. Slash pockets, zipper closing. Average length, 27 in. State size chest 34, 36, 38, 40, 42, 44, 46, 48 inches. 41 N 5159—Brown. Shipping weight 3 lbs. 7 oz. . . . \$9.18

**B** Flying Jacket style for heavy duty wear. **\$14.95**  
Mighty 13-ounce Jungle Cloth—toughest cotton fabric we've ever sold or seen, so tightly woven as to be water and wind-resistant. Lining is 18-ounce 50% wool, 50% alpaca pile on cotton back that is 48% of entire lining. Mouton collar (lambskin treated against spotting and curling). 100% wool worsted knit wristlets and bottom. Jungle Cloth lining in deep slash pockets. Zipper closing. Average length, 26½ inches. Designed to give long wear for work or sport under the most rugged conditions. State chest size 34, 36, 38, 40, 42, 44, 46 inches. 41 N 5165—Olive drab. Shpg. wt. 4 lbs. 9 oz. . . . \$14.95



## Two Gift Jackets that'll get a warm reception

*Champions* in their fields. For giving or for yourself. Other distinctive Hercules styles in General Catalog. For Easy Terms, see page 231



### Hercules two-tone deluxe Sports Casual



To be proudly given, proudly worn. Heavy cavalry twill of 38% new wool, 62% rayon in new taupe color combines with brown gabardine (heavy 1.75 wt. 2-ply combed cotton gabardine... our best). Water-repellency treatment is famous Cravenette process.

Deluxe jacket to give you comfort, service... yes, and true distinction. Fully lined (see 1, above) with iridescent rayon. See, too, style-making dress clothes features; padded shoulders (2), and split, buttoned cuffs (3), will smarten your appearance. Novelty yoke back has inverted pleats, bi-swing construction, stitched-down half belt; buttoned side tabs are easily moved if more waist suppression is desired. Shape-retaining interlined collar. Average length, 25 inches.

Sizes chest 34, 36, 38, 40, 42, 44, and 46 inches. Please state size.

41 N 6102—Sports Jacket. Shipping weight 3 pounds 2 ounces .....\$16.95

### Hercules wool Norfolk model Surcoat



Heavy all wool... 30% resilient new wool, 70% reused wool... used in red and black checked front, solid blue back. Plaid cotton flannel lines body (see 1, above); sturdy cotton in sleeves.

Think of the use he'll get out of a "wear-everywhere" coat like this! Smart, warm, serviceable, it rolls into one the best qualities of three great styles. Front pleats, tunneled for belt, and leather buttons, contribute Norfolk handsome appearance. Big size, big flap pockets, big convertible collar (see 2) make for mackinaw comfort. Easy-acting zipper starts well above bottom so that he'll have Surcoat leg freedom, plus 32-inch hip-covering length (see 3). Three-piece belt, stitched-down in back, fastens with buckle in front.

Sizes chest 34, 36, 40, 42, 44, and 46 inches. Please state size.

41 N 291—Norfolk model Surcoat. Shipping weight 4 lbs. 15 oz. ....\$13.98



**Studded Helmet**

**\$2.19**

Leathergrained all plastic helmet... more durable than leather. Perfect protection against rain, snow, and winter cold. Fleece rayon lining; adjustable chin strap. Shpg. wt. 8 oz.

Colors: tan and red. Sizes small (6 1/4-6 3/8); med. (6 3/8-6 7/8); large (6 7/8-6 3/4). Please state size and color.

43 N 727.....\$2.19



A \$1.00

B \$3.48

C \$1.69

D \$2.49

E \$1.69

**Rayon pile Earmuffs**

**44c**

A perfect gift for all lads... practical, too, just the thing to keep his ears toasty warm all winter long. Cotton fleece lining. Adjustable metal band folds up. Shpg. wt. 3 oz.

Colors: brown, blue, red, green. State color.

43 N 717-44c; 2 for 85c



**Give him something to wear, he'll like it!**

Good looking Boyville Apparel Gifts for boys on your Christmas list...



**Cotton blanket Robe for little boys**

**\$3.89**

- Double napped cotton blanket cloth is extra soft and smooth... famous for warmth
- Finely tailored for a neat, comfortable fit
- Seams are reinforced for added strength

Naturally, you want to delight that little fellow on Christmas morning... and yet you want to be practical, too. This handsome little robe serves the double purpose... a gift that will make your youngster's eyes sparkle with pleasure and yet will give him the warm protection he needs on cold winter mornings. Neatly tailored in a double breasted, 4-button style. Rayon cord belt with matching trim. Appliqued design on chest pocket. Set-in sleeves. Wash separately.

Sizes 2, 4, 6, 8. Colors Royal blue, red, camel (med.) tan. See chart below. Shipping weight 1 pound.

43 N 18—Please state size, color.....\$3.89

**How to Order Little Boys' Robes**

If chest is... 20... 22... 24... 25-in.  
If height is... 35... 39... 43... 47-in.  
Order size... 2... 4... 6... 8

**A** Jr. all wool Scarf... blended plaid patterns. A gift that's as colorful as his Christmas tree... and one that will keep him snug and warm, too. Size about 9 by 41 in.

Colors blue, maroon, brown. State color. 43 N 210—Shpg. wt. 4 oz..... \$1.00

**B** All wool matching Glove and Scarf Set. Here's a way to please that young man... give him this smart set. Scarf about 12x47 in. Gift box. Glove sizes medium (6-7), large (7 1/2-8 1/2).

Colors maize, camel, maroon. State size and color. 43 N 314—Shpg. wt. 11 oz. Complete set \$3.48

**C** Boys' warm 100% wool scarf. Attractive bold plaid patterns in this heavyweight all wool worsted scarf... he's sure to like it. Larger student size 12 by 47 inches.

Colors blue, brown, maroon. State color. 43 N 316—Shpg. wt. 9 oz..... \$1.69

**D** Good-looking leather Belt and Wallet Set. Western "Indian head" embossed design on belt, wallet, both made of fine steerhide leather. Belt is 1 in. wide. Gift box. Color Tan. Shpg. wt. 7 oz.

State size 24, 26, 28, 30, 32-in. waist. 43 N 317—29c Fed. Tax included..... \$2.49

**E** Two-tone gauntlet style Mittens. Big, swaggy gauntlet mitts with all wool Buffalo plaid backs and cuffs; capeskin leather palms. Warm cotton fleece lining. Colors red or blue. Sizes small (6 1/2), medium (7), large (8).

43 N 914—State size, color. Shpg. wt. 6 oz. \$1.69

Use Sears Convenient Easy Payment Plan for all your Christmas needs. For details see Page 231



A 79c



B 85c



C \$1.00



D \$1.89



E \$3.59

## Rootin' Tootin' fun lovers' gifts

Belts, guns and holsters in authentic Western styles

*Boyville Jr.*  
LIVE YOUR TRAIL DREAM

### Embossed Western style Belt

**A** Here's a tip for that young fellow's Christmas gift . . . a Western style belt made of fine steerhide leather with embossed Western design. Smartly styled to please young men. Gold color metal buckle, tip, loops.  $\frac{3}{4}$ -in. wide. Shpg. wt. 4 oz.

Color tan. Sizes 22, 24, 26, 28, 30, 32-inch waist.  
43 N 302—Please state size wanted. . . . . 79c

### Extra heavy steerhide Belt

**C** This Texas Ranger belt makes a wonderful gift for any boy. Made of extra heavy steerhide that wears exceptionally well. Embossed Western style metal buckle, tip, loops that fellows really "go for." 1-inch wide. Shipping weight 4 ounces.

Color tan. Sizes 24, 26, 28, 30, 32-inch waist.  
43 N 338—Please state size wanted. . . . . \$1.00

### Western style Belt, Holster, Gun Set

**E** Western type jeweled, studded steerhide belt with matching holster, "six shooter" gun . . . a gift that will give any boy a thrill. Holster and matching 1-in. belt trimmed with studs and jewel-like stones. Lightweight plastic gun.

Color tan. Belt sizes 24, 26, 28, 30, 32-inch waist. State size. Shipping weight 15 oz.  
43 N 353—Complete set. . . . . \$3.59

### Western style studded Belt

**B** Just the gift for him . . . one that he will be proud to wear. Genuine heavyweight steerhide belt  $\frac{5}{8}$  in. wide with sparkling studs and jewel-like stones all around. Western style nickel plated buckle, tip, loop. Shipping weight 4 oz.

Color tan. Sizes 24, 26, 28, 30, 32-inch waist.  
43 N 349—State size. . . . . 85c

### Western style Belt for boys and girls

**D** He's a lucky fellow if he finds this jewel-trimmed belt under his Christmas tree. Genuine heavyweight steerhide with studs and jewel-like stones all around. Western design . . . solid brass buckle, loop and tip.  $1\frac{1}{2}$ -in. extra wide. Shpg. wt. 5 oz.

Color tan. Sizes 24, 26, 28, 30, 32-inch waist.  
43 N 350—Please state size. . . . . \$1.89

### Individual Holsters and Guns

Holsters and gun, listed in set at left, can also be purchased individually, as listed below.  
**Left Hand Leather Holster** . . . jewel-like trim.  
43 N 351—Shipping weight 3 ounces. . . 94c  
**Right Hand Leather Holster** . . . jewel-like trim.  
43 N 352—Shipping weight 3 ounces. . . 94c  
**Plastic Gun**, moving cylinder; hammer action.  
43 N 347—Shipping weight 9 ounces. . . 94c

### HOW TO MEASURE AND SIZE SCALE FOR BOYS' HATS AND CAPS

Place a strip of heavy paper about 2 inches wide around head. Mark paper where ends meet, then place on a tape measure for correct measure in inches. If between sizes, order next larger one.

| if head measures                 | Order size      | if head measures                 | Order size      | if head measures                 | Order size      | if head measures                 | Order size      | if head measures                 | Order size      |
|----------------------------------|-----------------|----------------------------------|-----------------|----------------------------------|-----------------|----------------------------------|-----------------|----------------------------------|-----------------|
| 19 $\frac{1}{2}$ inches. . . . . | 6 $\frac{1}{4}$ | 19 $\frac{3}{4}$ inches. . . . . | 6 $\frac{3}{8}$ | 20 $\frac{1}{8}$ inches. . . . . | 6 $\frac{5}{8}$ | 21 $\frac{1}{8}$ inches. . . . . | 6 $\frac{7}{8}$ | 21 $\frac{3}{8}$ inches. . . . . | 7 $\frac{1}{8}$ |
| 19 $\frac{1}{4}$ inches. . . . . | 6 $\frac{1}{8}$ | 20 $\frac{1}{4}$ inches. . . . . | 6 $\frac{1}{2}$ | 21 $\frac{1}{4}$ inches. . . . . | 6 $\frac{3}{4}$ | 21 $\frac{3}{4}$ inches. . . . . | 7               | 22 $\frac{1}{4}$ inches. . . . . | 7 $\frac{3}{8}$ |

Why not include boys' furnishings on your Easy Payment order? See page 231



### "The Lazy Y" Western style cowboy Hat

Yes, this Western style cowboy hat is just the right gift to say "Merry Christmas" to any young lad or girl. They'll like the strictly Western, extra wide  $3\frac{3}{4}$ -inch brim . . . the colorful adjustable rayon cord chin band . . . the snappy braided hat band. Made of fine 100% new wool felt. Shipping weight 1 pound 4 ounces.

Colors: black, tan or red. Sizes 6 $\frac{1}{2}$ , 6 $\frac{3}{8}$ , 6 $\frac{3}{4}$ , 6 $\frac{7}{8}$ , 7, 7 $\frac{1}{8}$ , 7 $\frac{1}{4}$ . Please state size and color wanted. See chart shown below.  
43 N 507 . . . . . \$1.87



### Buffalo plaid Jacket-shirt—100% virgin wool

- Heavy, 22-oz. all virgin wool loomed from top quality, lively fibers, in brilliant red and black checks—treated to resist wind and moisture. \$6.95
- Latest style—wear it as a shirt or jacket!

A thrilling gift . . . with all the features Young America wants most! Big, bold Buffalo checks superbly woven from 100% virgin wool for rare warmth and beauty. 2 chest pockets with buttoned flaps. 2-way collar. Easy fitting plain back. Button cuffs. Sleeve facings. Finished seams. Shpg. wt. 1 lb. 8 oz.

Even sizes 10 to 18. State size. See How to Measure page 232.  
40 N 6600—Buffalo plaid Jacket-Shirt. . . . . \$6.95



**"Fills Easy" Pouch**

It's easy to fill a pipe from one of these pouches. All you do is press bottom of pouch to release tobacco into bowl of pipe. Made of brown split leather. Moisture-retaining lining. Length 5 3/4 inches, width of top 4 1/2 inches.  
**8 N 6551—Shpg. wt. 4 oz. . 89c**

**Sheepskin Pouch**

Well-made, long-wearing pouch of genuine top-grain sheepskin leather. Smooth soft finish, saddle tan color. Equipped with straight easy-to-work zipper opening and moisture-retaining lining. Length 6 1/2 inches, width 4 inches.  
**8 N 6599—Shpg. wt. 3 oz. . \$1.49**

**Combination Pouch**

Here's the kind of pouch any pipe smoker will enjoy using. Genuine leather in pebble grained finish. Two zipper pockets give space for tobacco and pipe. Tobacco compartment has moisture-retaining lining. Size, about 6x3 in. Brown or black, no choice.  
**8 N 9976—Shipping wt. 4 oz. \$1.98**

**Tobacco and Pipe Pouch**

Get this superb tobacco and pipe pouch to really please a man at Christmas! Made of soft genuine goatskin in a medium brown color. Equipped with full length pocket, with moisture-retaining lining, to hold tobacco. A smaller pocket holds pipe. Each compartment has zipper. Size of pouch about 6x3 inches. In gift box.  
**8 N 9977—Shipping wt. 4 oz. . . . . \$2.98**



**A 45c**

**B \$1.69**

**C \$1.69**

**D 89c**

**F \$2.29**

**E 79c**



**G \$1.00**

**H \$1.49**

**J \$5.50**

**K \$7.50**

**L \$11.95**

**Fine Accessories to please any smoker**

**A Pipe Smokers' Gadgets.** Everything for taking care of a pipe. Set has reamer, tamper, pick, scraper.  
**8 N 6725—Shpg. wt. 6 oz. . Set 45c**

**Bronze-finish Metal Pipe Racks.** Any sports-lover will like these animals with pipe rest at side. Pipe not included.

**B 8 N 9936—Metal Horse,** 4 1/2 inches high. Shpg. wt. 1 lb. 6 oz. **\$1.69**

**C 8 N 9937—Metal Dog,** 4 1/2 inches high. Shpg. wt. 1 lb. 6 oz. **\$1.69**

**D Safety Tray-Lite.** Decorative colored glass ash tray with match holder attached. Tray 4 1/2 inches in diameter. Comes with 3 rolls of matches.  
**8 N 9944—Shpg. wt. 3 lbs. . . . 89c**  
**3 Rolls of Matches.** 360 matches.  
**8 N 9945—Shpg. wt. 6 oz. . . . . 19c**

**E B-C Safety Ash Tray.** New triple-plate chrome-finish tray with cigarette holder. Prongs firmly hold cigarette which is snuffed out as it burns down to holder. Tray 5 inches in diameter. Holds 5 cigarettes.  
**8 N 6724—Shpg. wt. 8 oz. . . . . 79c**

**F Cork-knocker Pipe Tray and Humidor.** Round cork knob for knocking out pipe. Tray made of bronze color heat resistant metal, 7 1/2 in. in diameter. Matching humidor equipped with clay moistener. Diameter 7 in. Holds about 1 lb. of tobacco. Shpg. wt. 2 lbs. 8 oz.  
**8 N 9982—Pipe tray, humidor. \$2.29**  
**Cork-knocker Pipe Tray only.**  
**8 N 9992—Shpg. wt. 1 lb. . . . \$1.09**  
**Humidor only.**  
**8 N 9981—Shpg. wt. 1 lb. 8 oz. . \$1.39**

**G Parker Lighter.** Stainless steel windproof lighter. Especially designed with a shield to protect the flame from wind. Length 2 3/4 inches. Uses standard wick and flint.  
**8 N 6525—Postpaid. . . . . \$1.00**

**H Windproof Lighter.** Shining chrome-finish lighter that stays bright and new looking. Has guard to protect flame from wind. Length 2 1/4 inches. Uses standard wick and flint.  
**8 N 6521—Shpg. wt. 6 oz. . . . \$1.49**

**J Ronson Standard Lighter.** This handsome, serviceable lighter has gleaming chrome finish. Lights with slight pressure of the thumb, goes out when released. Length 2 in., width 1 1/4 in. Uses standard wick and flint.  
**8 N 6508—Postpaid. . . . . \$5.50**

**K Ronson Whirlwind Lighter.** For a lighter that works quickly and easily, get this beautiful windproof Ronson—the "world's greatest lighter." Has windshield that slides up and down. Chrome finish. Size 2 1/8 x 1 1/4 inches. Uses standard wick and flint. Comes with replacement parts including flint, brush, and igniter.  
**8 N 6509—Postpaid. . . . . \$7.50**

**L Ronson Mastercase.** Put this rich-looking combination cigarette case and lighter under the tree for a long-to-be-remembered gift. Satiny chrome finish. Holds about 14 cigarettes. Lights easily. Size 4 1/4 x 2 1/2 inches. Fits easily into pocket or purse. Uses standard wick and flint. With extra replacement parts including flint, brush, and igniter.  
**8 N 6510—Postpaid. . . . . \$11.95**