

A \$2.98

B \$2.98

# Pilgrim Dress Shirts white and colored

"... wish him long to reign,  
and many a merry Christmas  
for to see again..."

Each shirt attractively  
boxed for gift giving



C \$3.44

D \$3.79

## Shirts of white, always delight; fine Sanforized fabrics

**A** Oxford cloth, mercerized, Sanforized combed cotton fabric won't shrink more than 1%. Youthful, comfortable button-down soft collar. Gathered sleeves, back. Panel front. Shpg. wt. each 1 lb. 3 oz. **\$2.98**  
 Neck sizes 14, 14½, 15, 15½, 16, 16½, 17 in. State neck size, sleeve length; see right.  
 33 N 137—White.....\$2.98  
 Tie. Broad stripes on rayon satin. Wt. 3 oz.  
 33 N 4012—State color blue....Each 89c

**B** Cotton broadcloth, always in good taste... modestly priced. Mercerized for luster; Sanforized, fabric won't shrink more than 1%. Neat non-wilt collar; gathered back, sleeves. Panel front. Shpg. wt. each 1 lb. 3 oz. **\$2.98**  
 Neck sizes 14, 14½, 15, 15½, 16, 16½, 17 in. State neck size, sleeve length; see right.  
 33 N 130—White.....\$2.98  
 Tie. Rayon brocaded satin. Wt. 3 oz.  
 33 N 4016—State color blue....Each 89c

**C** Neckband style, preferred by many. Combed, Sanforized cotton broadcloth, won't shrink over 1%. Soft double cuffs. No pocket; for collar, see below. Shpg. wt. 1 lb. 3 oz. **\$3.44**  
 Neck sizes 14, 14½, 15, 15½, 16, 16½, 17 in. State neck size, sleeve length; see right.  
 33 N 133—White.....\$3.44  
 Van Huesen collar for neckband shirts. White cotton webbing. Postpaid. (Shpg. wt. 3 oz.)  
 33 N 15—Quarter sizes 14 to 17¼. Ea. 50c

**D** Sanforized rayon... luxuriously soft, superbly tailored; a "special" gift. Looks like silk with a novelty weave, launders like cotton; fabric won't shrink over 1%. Soft collar. Panel front. Shpg. wt. 1 lb. 3 oz. **\$3.79**  
 Neck sizes 14, 14½, 15, 15½, 16, 16½, 17 in. State neck size, sleeve lengths; see right.  
 33 N 190—White.....\$3.79  
 Tie. Dobby weave on rayon satin. Wt. 3 oz.  
 33 N 3994—State color maroon. Ea. \$1.39

**Pilgrim**

THE RIGHT WAY  
TO SAY

MEN'S  
FURNISHINGS

## Our finest Broadcloth Shirt... fit for a king!

The man who rates one of these shirts for Christmas is lucky indeed! Fabric is smooth-as-silk broadcloth, extra finely woven of 2-ply long staple Pima cotton, lustrous, durable. Sanforized, won't shrink over 1%. Slightly longer soft collar has removable stays. French front, double cuffs. **\$4.85**

Neck sizes 14, 14½, 15, 15½, 16, 16½, 17 in. Shpg. wt. each 1 lb. 3 oz.  
 33 N 196—White. State neck size, sleeve length; see below...\$4.85  
 Tie. Pure dye, pure silk foulard in bold design. Rayon faced ends.  
 33 N 4023—State color brown. Shpg. wt. 3 oz....Each \$1.39

Neck size in inches	Available in these sleeve lengths	
14	32	33
14½	32	33
15, 15½, 16	32	33
16½	33	34
17	33	34



## SIGNA-GRAM initial on cuffs

**New! Individual! Smartest idea in years! Makes personalized gifts of these fine Pilgrim Dress Shirts**

Gold color initial on black; fits into button; washing, ironing will not harm it. Removable; no extra charge with these shirts.

Each shirt attractively boxed.

**\$3.44**  
Each shirt



*Important: When ordering Signa-gram shirts, state initial. All initials except I, O, Q, U, V, X, Y, Z.*

### White broadcloth

**1** Winning gift . . . fine white cotton broadcloth shirt personalized with HIS initial. Sanforized fabric is combed and mercerized for smoothness, rich luster, won't shrink over 1%. Made with non-wilt collar; pleated back, sleeves; regular panel front. Shpg. wt. 1 lb. 3 oz.

Neck sizes 14, 14½, 15, 15½, 16, 16½, 17 in. *State initial, size, sleeve length; see page 4.*  
33 N 200—White only. \$3.44

Tie of rich rayon dobby satin with striking paisley print. Rayon faced ends; wool lining. Shpg. wt. 3 oz.

33 N 4024—State blue. . . \$1.39

### Wide spread collar

**2** If he's style wise, discriminating, choose this fine cotton broadcloth shirt. Besides the smart signa-gram initial on cuffs, it features popular wide spread collar with removable stays. Same fine combed, mercerized, Sanforized fabric as shirt at left. Panel front. Shpg. wt. 1 lb. 3 oz.

Neck sizes 14, 14½, 15, 15½, 16, 16½, 17 in. *State initial, size, sleeve length; see page 4.*  
33 N 201—White only. \$3.44

Tie. Attractive floral and stripe design on lustrous rayon satin brocade. Wool lining. Hemmed ends. Shpg. wt. 3 oz.

33 N 4013—State maroon. . . 89c

### White on white

**3** A bit different, but very smart! Neat self color figure is woven in, won't wash out. Fine count cotton is combed for smoothness, mercerized for sparkling luster. Sanforized, fabric won't shrink over 1%. Non-wilt collar, pleated back, sleeves, signa-gram initial. Panel front. Shpg. wt. 1 lb. 3 oz.

Neck sizes 14, 14½, 15, 15½, 16, 16½, 17 in. *State initial, size, sleeve length; see page 4.*  
33 N 203—White only. . . \$3.44

Tie. Bold and dashing design printed on good quality rayon foulard. Wool interlining. Holds knot well. Shpg. wt. 3 oz.

33 N 4017—State blue. . . . . 89c

### Soft, solid colors

**4** Outstanding in style, quality. Mercerized cotton broadcloth with the effect of an end and end fabric. Vat dyed, washfast. Sanforized, fabric won't shrink over 1%. Wide spread soft collar with removable stays. Panel front. Shpg. wt. 1 lb. 3 oz.

Neck sizes 14, 14½, 15, 15½, 16, 16½, 17 in. *State initial, size, sleeve length; see page 4.*  
33 N 205—Blue  
33 N 206—Tan. . . . . \$3.44

Tie. Richly brocaded rayon satin highlighted by a "scarf" design. Hemmed ends. Wool lining. Shpg. wt. 3 oz.

33 N 4020—State maroon. \$1.39

### Crisp candy stripes

**5** This handsome shirt has color, style, quality plus the signa-gram initial. Fine mercerized cotton broadcloth; Sanforized, fabric won't shrink over 1%. Vat dyed, washfast. Non-wilt collar. Panel front. Shpg. wt. 1 lb. 3 oz.

Neck sizes 14, 14½, 15, 15½, 16, 16½, 17 in. *State initial, size, sleeve length; see page 4.*  
33 N 230—Blue  
33 N 231—Tan  
33 N 232—Green. . . . . \$3.44

Tie. For luck, wear the clover design. Printed on lustrous rayon foulard. Rayon faced ends. Wool lined. Shpg. wt. 3 oz.

33 N 4025—State brown. . . 89c

For Easy Terms, see page 256.

ALL PAGE 5 . . DRESS SHIRTS



**For variety in his wardrobe . . . Pilgrim colored Dress Shirts of fine Sanforized fabrics**

Colored stripes on white ground, clean and crisp looking . . . and they stay that way because they're vat dyed. **\$269**  
 Fabric is a fine cotton broadcloth, mercerized for slight luster, Sanforized to keep its fit (won't shrink more than 1%). Non-wilt collar for neatness. Washfast. Boxed. Shpg. wt. each 1 lb. 3 oz.  
 Neck sizes 14, 14½, 15, 15½, 16, 16½, 17 in. State neck size and sleeve length. See chart on page 4.  
 33N120—Blue 33N121—Tan 33N122—Gray, \$2.69  
 Tie. Popular polka dot, correct at all times. All rayon foulard print. All wool wrinkle resistant lining.  
 33N3985—State color maroon. Shpg. wt. 3 oz. .89c

Colored stripes on colored ground . . . pattern is smartly spaced, blends beautifully with the background. **\$285**  
 Vat dyed colors stay new looking. Fine mercerized cotton broadcloth is Sanforized; won't shrink over 1%. Neat non-wilt collar. Gathered back, sleeves. Washfast. Boxed. Shpg. wt. each 1 lb. 3 oz.  
 Neck sizes 14, 14½, 15, 15½, 16, 16½, 17 in. State neck size and sleeve length. See chart on page 4.  
 33N140—Blue 33N141—Tan 33N142—Gray \$2.85  
 Tie. Solid color, always a favorite. All rayon "Barathea." Wool interlining, hard to wrinkle.  
 33N4026—State color maroon. Wt. 3 oz. . . .89c

All rayon with smart colored stripes . . . luxury quality through and through. Looks like a silk shirt, beats it for service. Fabric is vat dyed to keep its rich coloring; Sanforized shrunk (won't shrink over 1%). Perfect fitting soft collar. Gathered back, sleeves. Boxed. Washfast. Shpg. wt. each 1 lb. 3 oz. **\$379**  
 Neck sizes 14, 14½, 15, 15½, 16, 16½, 17 in. State neck size and sleeve length. See chart on page 4.  
 33N192—Blue 33N193—Tan . . . \$3.79  
 Tie. Rich woven rayon satin brocade in distinctive shell pattern. Hemmed ends. All wool lining.  
 33N4014—State color blue. Shpg. wt. 3 oz. .89c

More ties on pages 10 and 11—All attractively boxed.



Smart two-tone sports shirt, thrift priced. Firmly woven cotton twill. **\$288**  
 Sanforized fabric won't shrink over 1%. Two way collar; long sleeves. Two pockets. Vat dyed, washfast.  
 Sizes small (14-14½-in. neck); medium (15-15½); medium large (16-16½); large (17-17½). Shipping weight each 1 pound 5 ounces. Please state size wanted when ordering.  
 33N528—Brown and tan . . . \$2.88

Plaid print on fine cotton twill . . . distinctive sports shirt. Fabric is mercerized and Sanforized; won't shrink over 1%. Vat dyed, washfast. **\$288**  
 Convertible collar. Shipping weight each 1 pound 6 ounces.  
 Sizes small (14-14½-in. neck); medium (15-15½); medium large (16-16½); large (17-17½). State size.  
 33N646—Blue 33N647—Med. tan  
 33N648—Light tan . . . . . \$2.88



**Biggest Sports Shirt buy of the holiday season**

Here's where little money makes a big gift showing . . . and you're getting a full measure of quality, too! It's a handsomely tailored sports shirt of finely woven self patterned cotton broadcloth . . . Sanforized to keep fabric shrinkage down to a mere 1%; vat dyed to keep colors sparkling. Convertible collar to wear with or without tie. Square bottom. Two pockets. Washfast. Boxed. **\$250**  
 Sizes small (14-14½-inch neck); medium (15-15½); medium large (16-16½); large (17-17½). Please state size wanted when ordering. Shipping weight each 1 pound 5 ounces.  
 33N543—Blue 33N544—Tan 33N545—Green . . . . . \$2.50

# Pilgrim Sports and Dress Shirts

"Christmas comes but once a year  
and when it does it brings good cheer."

Individually boxed  
for Christmas giving

**Pilgrim**

THE RIGHT WAY  
TO SAY

MEN'S  
FURNISHINGS

**B**  
\$3.88



**A** \$4.88



**C** \$3.95

## Three ways to make a man happy

**A** *Your initial (removable)* **\$4.88**  
on each pocket button. 100% rayon gabardine with novel plaid pattern. 2-way collar, button loop at neck. 2-button adjustable cuffs. Washable, 2% max. fabric shrinkage. All initials but I, O, Q, U, V, X, Y, Z. *Print initial.* Shpg. wt. 1 lb. 7 oz. *State size:* small (14-14½), med. (15-15½), med. large (16-16½), large (17-17½).  
33N533-Blue plaid  
33N534-Tan plaid. \$4.88

**B** *Spun rayon in neat, small pattern.* **\$3.88**  
Sanforized, 1% max. fabric shrinkage. Convertible collar. Smart square bottom. Adjustable 2-button cuffs. Two button flap pockets. Washfast. Shpg. wt. 1 lb. 6 oz. *Sizes:* small (14-14½ inch neck); medium (15-15½); medium large (16-16½); large (17-17½). *State size.*  
33 N 595-Blue  
33 N 596-Med. tan  
33 N 597-Sand dune (lt. tan)..... \$3.88

**C** *Gabardine, closely woven of 51% rayon, 49% cotton.* **\$3.95**  
Smartly styled. Convertible collar. Two button flap pockets. Popular square bottom. Sanforized, 1% maximum fabric shrinkage. Washfast. Shpg. wt. 1 lb. 6 oz. *Sizes:* small (14-14½ inch neck); medium (15-15½); medium large (16-16½); large (17-17½). *State size.*  
33 N 636-Tan  
33 N 637-Blue  
33 N 638-Gold... \$3.95



### Superb Hego rayon . . handsome Pilgrim tailoring

Santa says—"For both dress and sports." Finely ribbed, luxurious rayon faille made of famous Celanese yarns. Our finest tailoring features. 2-way collar with smart button loop; open for sports, closed with tie. Long sleeves are pleated, two-button adjustable cuffs. Gathered action back. Square bottom with stylish side vents. Washable. 2% maximum fabric shrinkage. *Sizes:* small (14-14½-in. neck); medium (15-15½); medium large (16-16½); large (17-17½). *Please state size.* Shipping wt. 1 lb. 7 oz.  
33N525-Med. tan 33N526-Blue 33N527-Oyster white... \$3.95

### Dashing style . . Sanforized, part rayon gabardine

Santa says—"New . . Different." Made of closely woven gabardine; 51% rayon, 49% cotton. Sanforized fabric won't shrink more than 1%. Contrasting two-tone cotton jersey neck insert looks like colorful T-shirt. Smart convertible collar with two button loops. Pleated sleeves. Button flap pockets. Square cut bottom. Washfast. *Sizes:* small (14-14½-in. neck); medium (15-15½); medium large (16-16½); large (17-17½). *State size wanted please.* Shipping weight 1 pound 8 ounces.  
33N509-Blue with navy insert 33N510-Tan with tan insert  
33N511-Gold, tan insert 33N512-Green, maize insert... \$4.88





**A** \$4.88

**B** \$4.95

*Pilgrim Sports Shirts*  
*wool, rayon or cotton*

"then heigh-ho to the holly,  
 this life is most jolly."



Individually boxed  
 for Christmas giving



**C** \$4.85 Shirt

**D** \$7.95

**Fine rayon gabardine . . . two smart styles**

**A** Two-tone combination of all rayon gabardine for smart gift-giving. Slash pockets. Button loop sports collar. Adjustable cuffs. Hand washable, 2% max. fabric shrinkage.  
 Sizes small (14-14½-in. neck); med. (15-15½); med. large (16-16½); large (17-17½). *State size.* Shpg. wt. 1 lb. 6 oz.  
 33N513-Brown, tan plaid front.  
 33N514-Tan, brown plaid front \$4.88

**\$4.88**

**B** Western style; braid trimmed collar, pocket flaps, sleeves. All rayon gabardine. Button loop casual collar. 2-button adjustable cuffs. Hand washable, 2% max. fabric shrinkage.  
 Sizes small (14-14½-in. neck); med. (15-15½); med. large (16-16½); large (17-17½). *State size.* Shpg. wt. 1 lb. 6 oz.  
 33N679-Blue, gray braid  
 33N680-Brown, dk. brown braid. \$4.95

**\$4.95**

**"Gambler" styles . . . dapper, distinctive**

**C** All rayon gabardine in manly "gambler" style; 3-button cuffs, flap pockets. Hand wash separately. Shipping weight 1 lb. 3 oz.  
 Neck sizes 14, 14½, 15, 15½, 16, 16½, 17 in. *State size, sleeve length, see page 4.*  
 33 N 239-Brown 33 N 241-Blue  
 33 N 240-Tan . . . . . \$4.85  
 Tie-Painted duck, scenery on all wool.  
 33 N 4010-*State red.* Wt. 4 oz. . . \$1.39

**\$4.85**  
 Shirt

**D** Part wool gabardine (40% worsted wool, 60% spun rayon); a warm, long wearing fabric tailored like a dress shirt in the popular gambler model. Three-button cuffs, buttoned flap pockets. Hand wash separately.  
 Neck sizes 14½, 15, 15½, 16, 16½, 17 in. *State size.* Shpg. wt. 2 lbs. 1 oz.  
 33 N 716-Medium gray  
 33 N 717-Medium tan. . . . . \$7.95

**\$7.95**



**Superb rayon gabardine, washfast colors**

Handsome, closely woven all rayon gabardine in rich, fresh, solid colors that washing won't fade. Just the gift for that hard-to-please man on your list this season. Carefully tailored in popular casual model. Stylish button-loop sports collar is ultra smart open or closed (with or without tie). Has two-button adjustable cuffs, two neat flap pockets. Washfast, 2% maximum fabric shrinkage.  
 Sizes small (14-14½-inch neck); medium (15-15½); medium large (16-16½); large (17-17½). *Please state size.* Shipping weight 1 pound 6 ounces.  
 33N548-Luggage (rust) brown 33N549-Blue 33N550-Tan. . \$4.50

**\$4.50**



**Warm, rugged Sports Shirts of virgin wool flannel, bright patterns, solid colors**

Handsome plaid pattern men like so well . . . and it'll make him beam with pleasure come Christmas morn. **\$6.25**  
 Made of warm, sturdy all virgin wool flannel. He'll like its careful Pilgrim tailoring, its comfortable cut. Regular collar looks well with a tie. 2 handy button-flap pockets. Hand wash carefully. Boxed.  
*Neck sizes 14½, 15, 15½, 16, 16½, 17. Please state size wanted.* Shipping weight 1 pound 7 ounces.  
**33N718—Green plaid 33N719—Red plaid.** \$6.25

Rich, solid colors . . . he's sure to rave about the brilliant hunter's red model . . . for it's as gay as holly. **\$5.79**  
 Made of warm, luxurious all virgin wool flannel. Tailored like a dress shirt with regular collar, rounded shirt tails, panel button front, two-button-flap pockets. Hand wash carefully. Boxed.  
*Neck sizes 14½, 15, 15½, 16, 16½, 17. Please state size wanted.* Shipping weight 1 pound 7 ounces.  
**33 N 707—Red 33 N 708—Brown.** \$5.79

Smart two-tone combination . . . for the man who likes something different. **\$6.25**  
 Casually styled of all virgin wool flannel. 2-way sports collar, regular shirt tails. 2 button-flap pockets. Hand washable. Shpg. wt. 1 lb. 7 oz.  
*Sizes small (14-14½ neck); med. (15-15½); med. large (16-16½); large (17-17½). State size.*  
**33 N 714—Brown front; tan back, sleeves, collar**  
**33 N 715—Tan front; brown back, sleeves and collar.** \$6.25



**Extra-heavy 20-ounce fabric of 100% virgin wool . . . the gift for men this Christmas**

Handsome, striking; this outstanding plaid is a soft blend of richly shaded colors. Just the shirt to please the most rugged he-man on your gift list . . . he'll want to wear it Christmas day. **\$7.95**  
 Our finest Pilgrim tailored of softly napped extra heavy 20-oz. fabric woven of all virgin wool yarns. Packed to the neck with warmth, color, wear. Sateen lined regular collar. 2 roomy button-flap pockets. Regular shirt tails. Hand washable. Shpg. wt. 1 lb. 7 oz.  
*Neck sizes 14½, 15, 15½, 16, 16½, 17. Please state size.*  
**33 N 725—Red with overplaid.**  
**33 N 726—Gray with overplaid.** \$7.95



**Pilgrim**  
 THE RIGHT WAY  
 TO SAY  
**MEN'S  
 FURNISHINGS**

← **Thriftily priced heavy 7-ounce cotton twill outdoor Shirt**

A gift he'll use . . . heavy twill weave fabric shirt, double napped for warmth. Hercules made; double stitching, 1-piece sleeve facings, double shoulder yoke, 2 button flap pockets. Sanforized, 1% maximum fabric shrinkage. Hand wash separately. Shpg. wt. 1 lb. 6 oz. *Neck sizes 14½, 15, 15½, 16, 16½, 17 inches.* **\$2.69**  
**83 N 1474—Assorted plaid (no choice). State size.** Each \$2.69 **\$5.25**  
 2 for

ANY 89c TIE  
2 FOR \$1.69

ANY \$1.39 TIE  
2 FOR \$2.65



89c Ea. [H]

\$1.39 Ea. [G]

\$1.39 Ea. [F]

89c Ea. [E]

89c Ea. [J]

\$1.39 Ea. [K]

\$1.39 Ea. [L]

\$1.39 Ea. [M]

89c Ea. [N]

\$1.39 Ea. [P]

\$1.39 Ea. [R]

[T] 89c Ea.

[V] \$1.39 Ea.

[W] 89c Ea.

[X] 89c Ea.

[Y] 89c Ea.

[AA] 89c Ea.

89c Ea. [CC]

[BB] 89c Ea.

*Colorful Pilgrim Ties  
and Mufflers*

"don we now our gay apparel,  
sing the ancient Christmas carol."

Each tie attractively  
boxed for gift giving.  
See opposite page for  
tie descriptions.

**Pilgrim**

THE RIGHT WAY  
TO SAY  
MEN'S  
FURNISHINGS

## Give Christmas-bright Pilgrim Ties . . . wools, rayons, silk

Wool ties are all new homespun wool, hand loomed in California. Good quality ties are bold stripes and sporty plaids; unlined. Better quality is a finer weave, so wrinkle-resistant no lining is needed. Self-fringed ends.

Rayon ties come in a variety of sparkling patterns to delight the most hard-to-please man. Better quality is super-smooth to drape beautifully, richer looking than good quality rayons. All wrinkle-resistant wool lined. Foulards, dobby weave satins have rayon faced ends; others are hemmed.

Silk tie is pure dye pure silk, the softest, most luxurious fabric imaginable. Drapes gracefully, knots handsomely; highlights the rich coloring and the beauty of design. Rayon faced ends; wrinkle-resistant wool lined.

GOOD QUALITY	BETTER QUALITY
89c Each	\$1.39 Each
ANY	ANY
2 for \$1.69	2 for \$2.65

Order from descriptions below. Individually boxed. Shipping weight each 4 ounces.

- A** Gay multicolor stripes in good homespun all wool. 33 N 4008—Blue, maroon, brown. *State color* . . . . . 89c
- B** Bright plaid in bold colors in homespun all wool. 33 N 4009—Blue, maroon, brown. *State color* . . . . . 89c
- C** Colorful shell design woven on good rayon satin. 33 N 4014—Blue, maroon, brown. *State color* . . . . . 89c
- D** Polka dot. Classic design, rayon foulard. *State color*. 33 N 3985—Blue, maroon, brown, green . . . . . 89c
- E** Neat clover design on good quality rayon foulard. 33 N 4025—Blue, maroon, brown. *State color* . . . . . 89c
- F** Fine paisley pattern in sparkling colors. Better rayon dobby weave satin. *State color*. 33 N 4024—Blue, maroon, brown, green . . . . . \$1.39
- G** Feather design woven right into the richly colored brocade of this better quality rayon satin. 33 N 4021—Blue, maroon, brown. *State color* . . . . . \$1.39
- H** Shields make a modern design on good rayon foulard. 33 N 3989—Blue, maroon, brown. *State color* . . . . . 89c
- J** Floral and solid color stripes on good rayon satin. 33 N 4013—Blue, maroon, brown. *State color* . . . . . 89c
- K** Handsome duck and scenic design painted on the finer, better quality wrinkle-resistant wool. 33 N 4010—Light blue, red, light green, maize (yellow). *Please be sure to state color* . . . . . \$1.39
- L** Bold abstract design, better dobby weave rayon. 33 N 3994—Blue, maroon, brown. *State color* . . . . . \$1.39
- M** Bold modernistic design in pure silk for the rarest of gifts. Wrinkle-resistant wool lined; faced ends. 33 N 4023—Blue, maroon, brown. *State color* . . . . . \$1.39
- N** Painted horse design on good rayon dobby check. 33 N 4018—Blue, maroon, brown. *State color* . . . . . 89c
- P** Painted horseshoe, floral; finer wool. *State color*. 33 N 4011—Light blue, red, light green, maize. \$1.39
- R** Rich peacock design on better rayon satin brocade. 33 N 4022—Blue, maroon, brown. *State color* . . . . . \$1.39
- T** Bold diagonal leaf on good Celanese rayon foulard. 33 N 3990—Blue, maroon, brown. *State color* . . . . . 89c
- V** Brilliant scarf design on better rayon satin brocade. 33 N 4020—Blue, maroon, brown. *State color* . . . . . \$1.39
- W** Novelty design on good rayon foulard. *State color*. 33 N 4017—Blue, maroon, brown, green . . . . . 89c
- X** Smooth stripes, good rayon satin. Hemmed ends. 33 N 4012—Blue, maroon, brown. *State color* . . . . . 89c
- Y** Paisley pattern woven into rayon satin brocade. 33 N 4015—Blue, maroon, brown. *State color* . . . . . 89c
- AA** Painted terrier dog on good rayon dobby check. 33 N 4019—Blue, maroon, brown. *State color* . . . . . 89c
- BB** Colorful swirl woven into good rayon satin brocade. 33 N 4016—Blue, maroon, brown. *State color* . . . . . 89c
- CC** Solid color rayon baratheia; rich and distinguished-looking. 33 N 4026—Dark blue, maroon, brown, green, black. *Please state color* . . . . . 89c



## For color and warmth, he'll like a Pilgrim Muffler . . . Individually boxed

- 1** White rayon with dressy white satin stripes . . . a firm feeling, drapery fabric. Adds the dazzling white touch against a man's coat. About 12x48 inches with self fringed ends. Hand wash separately. Shipping weight 6 ounces. 33 N 3530—White only . . . . . \$1.41
- 2** Attractive multicolor black design . . . fine, soft, pure zephyr wool in a diagonal weave. About 12x48 inches, including self-fringe. Dry clean. Shpg. wt. 7 oz. Colors blue, maroon or brown. 33 N 3533—Please state color . . . . . \$1.88
- 3** New zipper front muffler in all wool multicolor plaid. Snug fitting—no loose ends! About 11 x 46 in. Dry clean. Sizes small (14-14½-in. neck); med. (15-15½); large (16-16½). Colors blue, maroon, brown. *State neck size, color*. 33 N 3534—Shpg. wt. 7 oz. . . . . \$2.19
- 4** Luxurious white rayon crepe muffler . . . extra fine quality, dressy and plain. Double thickness to drape handsomely. About 12x50 in. with knotted fringe ends. Hand wash separately. Shpg. wt. 6 oz. 33 N 3531—White only . . . . . \$2.39
- 5** Glove, Muffler set; all worsted wool. Chevron weave muffler about 12x48 in. Self-fringed ends. Matching knit gloves. Colors canary, tan, maroon, navy. Glove sizes small (8); medium (9); large (10). Shpg. wt. set 13 oz. 33 N 3540—State size, color . . . . . Set \$2.88
- 6** Rich solid colors, pure zephyr wool. All downy-soft wool in a fine diagonal weave. About 12x48 inches with self-fringe. Colors camel tan, maize (yellow), maroon, white, navy. Shpg. wt. 7 oz. 33 N 3529—State color . . . . . \$1.88
- 7** White muffler in good rayon crepe with one embroidered initial or motif. About 12 x 50 inches. Knotted fringe. Washable. Shipping weight 6 oz. All initials except I, Q, U, V, X, Y, Z. Initial or motif, *state which*. 33 N 3532—White only . . . . . \$1.88
- 8** Sparkling multicolored paisley print on fine, smooth rayon crepe. Dressy, rich looking. About 12x50 in. Fringe. Dry clean. Shpg. wt. 6 oz. Colors navy blue, maroon, brown. 33 N 3528—State color . . . . . \$1.88





### Closely woven Sanforized cotton broadcloth Pajamas . . . full cut, roomy

**Coat style . . . blazer stripes. \$469**  
 Brilliant prints on fine fabric (100x60 threads per square inch). Fabric won't shrink over 1%. Handsome coat has long point 2-way collar, tapered cuffs, chest pocket. Trousers have elastic in drawstring for comfort, 2-inch cuffs, 2-button fly. Washable. Shipping weight 1 pound 9 ounces.

Sizes A (34-36-in. chest); B (38-40); C (42-44); D (46-48). State size letter.

33 N 900—Blue  
 33 N 901—Maroon 33 N 902—Green

**Paisley print . . . coat style. Persian pattern in striking colors. \$469**  
 Closely woven long wearing fabric (100x60 threads per square inch) won't shrink over 1%. Smartly styled coat has long point 2-way collar, tapered cuffs. Trousers have elastic set into drawstring for comfortable fit at waistline, 2-inch cuffs, 2-button fly. Washable. Shipping weight 1 pound 9 ounces.

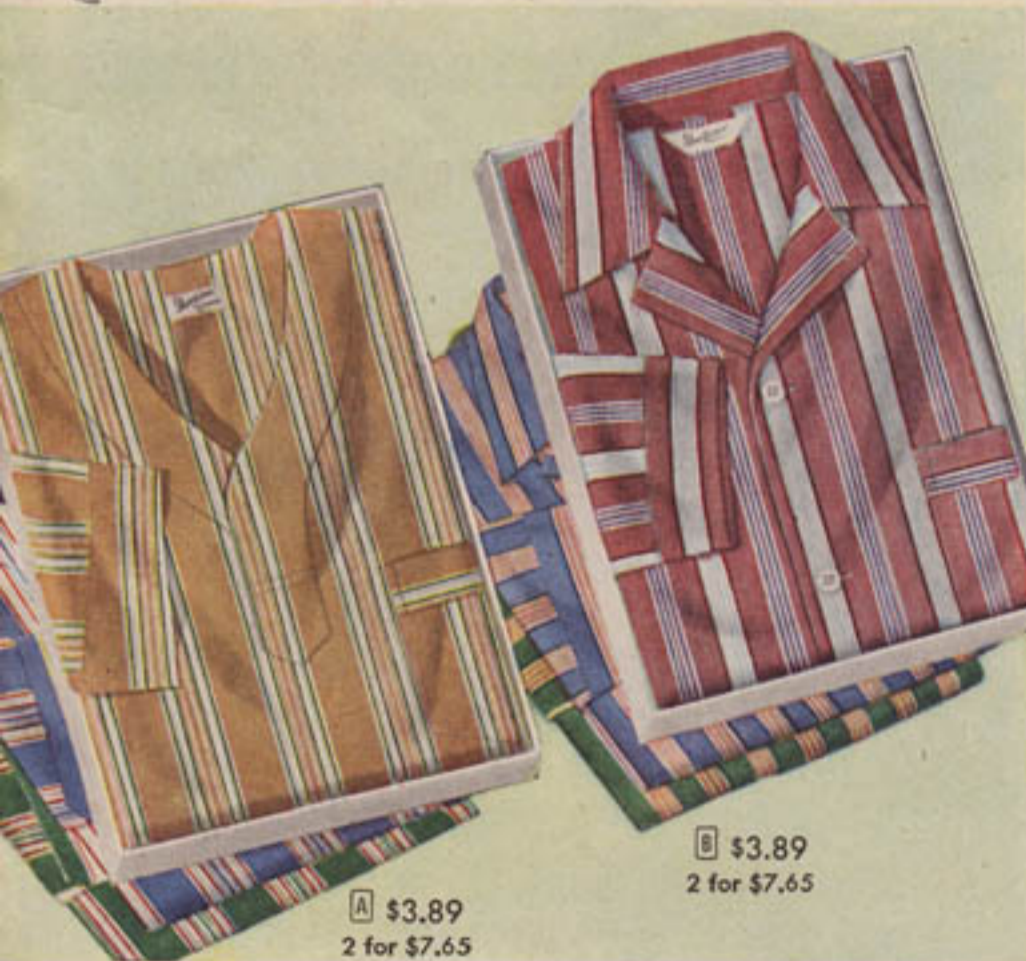
Sizes A (34-36-in. chest); B (38-40); C (42-44); D (46-48). State size letter.

33 N 906—Blue 33 N 907—Maroon

**Middy style . . . blazer stripes. \$469**  
 Comfortable, collarless, buttonless pullover. Richly colored print on fine broadcloth; 100x60 thread count. Fabric won't shrink over 1%. Trousers have elastic in drawstring, 2-inch cuffs, 2-button fly. Coat has tapered cuffs, chest pocket. Washable. Shipping weight 1 pound 9 ounces.

Sizes A (34-36-in. chest); B (38-40); C (42-44); D (46-48). State size letter.

33 N 903—Blue  
 33 N 904—Maroon 33 N 905—Green



**A \$3.89**  
 2 for \$7.65

**B \$3.89**  
 2 for \$7.65

### Give him restful sleeping comfort with Pilgrim Gift Pajamas

**\$3.89** • Sanforized broadcloth . . . 80x60 thread count  
 • Broad blazer stripes in coat or middy style  
 2 for \$7.65 • Full cut and roomy to fit without binding

Serviceable quality cotton broadcloth, not as closely woven as in pajamas above, but will give good wear. Fabric won't shrink over 1%. Attractive print stripes. Washable. Trousers have drawstring at waist for comfortable adjustment.

Order coat or middy style from individual descriptions below. Shpg. wt. each 1 lb. 9 oz.

**A Middy pullover style** is collarless, buttonless, has smart cuffs, chest pocket. Trousers as above. Sizes A (34-36-in. chest); B (38-40); C (42-44); D (46-48); E (50-52). Be sure color comes in your size.  
 33 N 891—Blue. Sizes A, B, C, D, E. State size letter.  
 33 N 892—Tan. Sizes A, B, C, D. State size letter.  
 33 N 893—Green. Sizes A, B, C, D. State size letter.

**B Coat Style** has full notch collar, smart cuffs, handy chest pockets. Trousers described above. Sizes A (34-36-in. chest); B (38-40); C (42-44); D (46-48); E (50-52). Be sure color comes in your size.  
 33 N 888—Blue. Sizes A, B, C, D, E. State size letter.  
 33 N 889—Maroon. Sizes A, B, C, D. State size letter.  
 33 N 890—Green. Sizes A, B, C, D. State size letter.



### Pilgrim Sanforized percale Nightshirts

Here's the answer to what to give the man who still likes old fashioned comfort. Pilgrim nightshirts are roomy and plenty long because there's no skimping on sizes . . . full 54 inches long. Keep their comfortable fit permanently because the fabric won't shrink over 1%. **\$279**  
 2 for \$5.49

Made of 80 square percale, a fabric that's known for its wear and washing qualities. Carefully tailored all the way through for long wear. Handy chest pocket.

Sizes small (34 to 38-in. chest); medium (40 to 44); large (46 to 50). State size.  
 33 N 971—White percale only. Shipping weight each 1 pound.





## Heavy Sanforized flannelette Pajamas . . . Gripper fasteners on Trousers

**Pilgrim**

THE RIGHT WAY  
TO SAY

**MEN'S  
FURNISHINGS**

Coat style with full notch collar, cuffs, chest pocket. **\$389**  
Trousers have adjustable waistband with elastic inserts at sides and two Gripper fasteners; Gripper fastener fly closing. Fabric won't shrink over 1%; both sides napped. Printed blazer stripes. Washable.

Sizes A (34-36-in. chest); B (38-40); C (42-44); D (46-48); E (50-52). State size letter. Shipping wt. 1 lb. 5 oz.

33 N 1040—Blue  
33 N 1041—Maroon 33 N 1042—Green

Middy style. Collarless, buttonless slip-over neatly finished at neck. Adjustable waistband with elastic inserts and two Gripper fasteners on trousers; Gripper fastener fly closing. Soft nap on both sides of fabric that won't shrink over 1%. Printed blazer stripes. Washable. **\$389**

Sizes A (34-36-in. chest); B (38-40); C (42-44); D (46-48); E (50-52). State size letter. Shpg. wt. 1 lb. 5 oz.

33 N 1043—Blue 33 N 1044—Maroon

Extra long sizes. Cut longer in the sleeves, legs and body to fit tall men comfortably without binding in the crotch, cover wrists and ankles. Fabric and construction details exactly the same as in the regular sizes at left. **\$395**

Extra long sizes B (38-40-inch chest); C (42-44); D (46-48); E (50-52). State size letter. Color blue. Shpg. wt. 1 lb. 7 oz.

33 N 1045—Coat style  
33 N 1046—Middy style

*Pilgrim Pajamas . . . knits,  
broadcloth, flannelette*

*".. had just settled ourselves  
for a long winter's nap."*



## Knit top Pajamas; broadcloth Trousers

He'll sleep in 'em . . . he'll lounge in 'em. Pleated front Sanforized cotton broadcloth trousers with snap fastener fly, have adjustable belt with Lastex back; regular pants pockets; 2-in. cuffs; fabric won't shrink over 1%. Striped knit cotton tops with long sleeves. Wash separately. **\$449**

Sizes A (34-36-in. chest); B (38-40); C (42-44); D (46-48). State size letter. Shipping weight 1 pound 9 ounces.

33 N 1020—Blue striped top; blue trousers

33 N 1021—Maroon striped top; gray trousers



## Knit ski-style Pajamas . . . nap on both sides

**\$259** The warmest kind of pajamas to sleep in . . . and for lounging. A fleecy nap on both sides of the knit cotton fabric makes it thick and soft. Styled for warmth, too, with snug fitting ribbed cuffs and anklets to keep out cold. Rib knit collarette lies close to neck. Top has handy chest pocket. Neck seams taped to keep shoulders from sagging. Trousers have all around elastic waistband for comfortable fit. Wash separately.

Sizes A (34-36-in. chest); B (38-40); C (42-44); D (46-48). State size letter.  
33 N 1039—Medium blue only. Shipping weight each suit 1 pound 7 ounces.





A \$8.95



B \$8.95



See  
Opposite Page  
For  
Descriptions



C \$13.95



D \$9.75



See  
Opposite Page  
For  
Descriptions



E \$11.95



F \$9.50



See  
Opposite Page  
For  
Descriptions

*Pilgrim Robes.. wools,  
rayons, blanket cloth*

*"rest ye merry, gentlemen,  
let nothing you dismay."*



**Pilgrim**

THE RIGHT WAY  
TO SAY

MEN'S  
FURNISHINGS

**Pilgrim Gift Robes**  
will say it best—  
"Merry Christmas"

ILLUSTRATED ON OPPOSITE PAGE

**All Virgin Wool, two-way collar**

**A** It's new . . . it's different! A notched collar that can be left open—or buttoned up under the chin for more protection. Rich, plain colors in this soft all new wool flannel robe that's warm and comfortable but not bulky. Matching non-slip sash; 3 pockets. Dry clean. Boxed. Shpg. wt. 2 lbs. 9 oz. **\$8.95**  
Each  
Sizes small (34-38-inch chest.); medium (39-42); large (43-46).  
33N1947-Navy 33N1948-Maroon *State size*. Ea. \$8.95

**All Virgin Wool, full shawl collar**

**B** Smartly conservative colors, soft all new wool flannel . . . an ideal combination for gift giving, for year-round enjoyment. Rayon cord trim on shawl collar, cuffs, 3 pockets. Matching non-slip sash. Dry clean. Individually boxed for Christmas giving. **\$8.95**  
Each  
Sizes small (34-38-in. chest); medium (39-42); large (43-46); and extra-large (47-50). Shipping weight each 2 lbs. 9 oz.  
33N1990-Maroon 33N1991-Navy *State size*. Ea. \$8.95

**Rich Rayon Jacquard, rayon satin lining**

**C** Most luxurious of our Pilgrim gift robes . . . Rich rayon Jacquard in deep, handsome colors with rayon satin faced shawl collar, cuffs; matching non-slip sash with soft fringe; full rayon satin lining. Padded shoulders; 3 slash pockets. Dry clean. Each robe in a box. Shpg. wt. each 2 lbs. 4 oz. **\$13.95**  
Each  
Sizes small (34-38-inch chest.); medium (39-42); large (43-46).  
33N1964-Maroon 33N1965-Navy *State size*. Ea. \$13.95

**Fine Hego Rayon, foulard-type pattern**

**D** Rich, distinctive Hego fabric, made of Celanese rayon yarns, with a clear cross rib and a neat foulard type all-over pattern. Wide, sweeping shawl collar is double thick. Comfortable, full-length wrap-around style with plenty of overlap. Matching non-slip sash; inside yoke; 3 pockets. Dry clean. Boxed. Shpg. wt. 2 lbs. 4 oz. **\$9.75**  
Each  
Sizes small (34-38-inch chest); medium (39-42); large (43-46).  
33N1900-Maroon 33N1901-Navy *State size*. Ea. \$9.75

**100% Worsted Wool Flannel, rich colors**

**E** All the warmth of ordinary wool, but lighter in weight, richer to feel; yet it still has enough body to hang smoothly and drape gracefully. Full shawl collar, loose cuffs. Matching non-slip sash with tassel fringe; 3 pockets. Dry clean. Each robe in a box. Shipping wt. each 2 lbs. 8 oz. **\$11.95**  
Each  
Sizes small (34-38); medium (39-42); large (43-46)-inch chest.  
33N1994-Maroon 33N1995-Navy *State size*. Ea. \$11.95

**Rayon Jacquard, solid color trim**

**F** Gleaming rayon satin collar, cuffs, pocket facing and fringed sash in sparkling contrast to the richly patterned rayon brocade. Comfortable shawl collar; sash has novel button feature that prevents slipping out of loops. 3 pockets. Dry clean. Boxed. Shpg. wt. each 2 lbs. 4 oz. **\$9.50**  
Each  
Sizes small (34-38-inch chest); medium; (39-42); large (43-46); extra long for tall men (39-42 inch chest.)  
33N1962-Maroon 33N1963-Navy *State size*. Ea. \$9.50



**Heavy Beacon cotton blanket cloth . . . warm, comfortable**

All soft Beacon cotton blanket cloth robe in an ombre (shaded) pattern, with full rayon cord trim, sash. Full length wrap-around style with a wide overlap. Wide, double thick shawl collar; 3 pockets. Seams reinforced with binding. Dry clean. Each robe in a box. Shipping weight each 3 lbs. 2 oz. **\$6.45**  
Each  
Sizes small (34-38-in. chest); medium (39-42); large (43-46); extra large (47-50).  
33 N 1908—Blue 33 N 1909—Maroon *State size*. Each \$6.45



**Super-warm Beacon blanket cloth**

Extra warm, extra soft, extra thick and comfortable Beacon cotton blanket cloth robe in rich, solid colors. Wrap-around style with a wide overlap for roomy comfort, warmth. **\$7.85**  
Each  
Neat, attractive check pattern on collar and cuffs. Heavy rayon sash, decorative rayon cord trim on the wide, comfortable shawl collar, loose cuffs, and 3 roomy pockets give a smart, dressy appearance. Double collar. Dry clean. Each robe comes in a box.  
Sizes small (34-38-inch chest); medium (39-42); large (43-46); extra large (47-50). *State size*. Shipping weight each 3 lbs. 2 oz.  
33 N 1902—Maroon 33 N 1903—Navy  
Each.....\$7.85



A \$9.95

See  
Opposite Page  
For  
Descriptions.



B \$9.50



C \$9.45

See  
Opposite Page  
For  
Descriptions



D \$8.95



E \$9.50

See  
Opposite Page  
For  
Descriptions



F \$11.95

# Pilgrim Robes, Jackets .. wools, rayons

"let every good fellow  
now join in a song."

**Pilgrim**

THE RIGHT WAY  
TO SAY

MEN'S  
FURNISHINGS

**Fine Handsome Robes  
that Santa himself  
would appreciate**

ILLUSTRATED ON OPPOSITE PAGE

## 100% Wool Flannel, contrasting trim

**A** Is he dreaming of a warm Christmas? He can have that, and smartly distinctive appearance, too, if you give him this Pilgrim gift robe in beautiful, deep colors. Attractively trimmed with contrasting wide shawl collar, non-slip sash, pocket facing, cuffs. Dry clean. Boxed. Shpg. wt. 2 lbs. 8 oz. **\$9.95**  
Each

Sizes small (34-38-in. chest); med. (39-42); large 43-46). State size.  
33 N 1970—Maroon with gray trim  
33 N 1971—Navy with powder blue trim.....Each \$9.95

## All Wool Flannel, neat checked trim

**B** Santa himself would like to find this warm Pilgrim robe under his tree! Gay, Christmas-trimming colors make the checked trim on the wide shawl collar, cuffs and non-slip sash in sparkling contrast to the solid-colored robe. 3 pockets. Dry clean. Shipping weight 2 lbs. 9 oz. **\$9.50**  
Each

Sizes small (34-38-inch chest); medium (39-42); large (43-46).  
33 N 1922—Maroon 33 N 1923—Navy. State size.... Each \$9.50

## 75% Virgin Wool, bold blazer stripes

**C** 75% soft new wool, 25% rayon... a smooth-draping fabric that's ideal for warmth, trim appearance. Comfortable shawl collar, matching non-slip sash; 3 pockets. Warm colors, dyed before weaving to bring out the full beauty of coloring. Dry clean. Each robe in a box. Shpg. wt. 2 lbs. 9 oz. **\$9.45**  
Each

Sizes small (34-38-inch chest); medium (39-42); large (43-46).  
33 N 1974—Navy 33 N 1975—Maroon. State size.... Each \$9.45

## Dressy rayon brocade in rich colors

**D** For his "dressed up" leisure hours there's nothing like rayon brocade... it's the perfect gift robe! Smooth-fitting shawl collar is double thick; matching sash has Gripper Fasteners. Inside yoke, three pockets. Dry clean. Boxed. **\$8.95**  
Each

Sizes small (34-38-inch chest); medium (39-42); large (43-46); and extra long for tall men (39-42-in. chest). Shpg. wt. 2 lbs. 4 oz.  
33 N 1924—Blue 33 N 1925—Maroon. State size... Ea. \$8.95

## Rayon Jacquard, contrasting trim

**E** Gleaming rayon satin collar, sash and pocket facings in a contrasting plain color make a sparkling trim against the rich, deep color of the robe. Wide shawl collar; rayon satin yoke. Fringed sash has a novel button feature that won't let it slip out of loops. 3 pockets. Dry clean. Boxed. **\$9.50**  
Each

Sizes small (34-38-inch chest); medium (39-42); large (43-46). Please be sure to state size. Shpg. wt. 2 lbs. 4 oz.  
33 N 1966—Maroon with navy trim  
33 N 1967—Navy with maroon trim..... Each \$9.50

## Herringbone striped wool, slash pockets

**F** It's exciting! It's new and different... the new slash pockets in the new American Woolen fabric, an all wool pastel herringbone stripe. Add the finest Pilgrim tailoring, notched collar, matching non-slip sash, 3 pockets, and there's an unbeatable gift robe! Dry clean. Boxed. Shpg. wt. 2 lbs. 8 oz. **\$11.95**  
Each

Sizes small (34-38-in. chest); med. (39-42); large (43-46). State size.  
33 N 1952—Maroon and gray  
33 N 1953—Blue and gray..... Each \$11.95



## Sparkling polka dot rayon for his very merry Christmas

At home or traveling, it's always "right" ... that's why this rayon print is such a perfect gift. Wide shawl collar, matching non-slip sash, self yoke, loose cuffs. 3 roomy pockets, too. Dry clean. Boxed. **\$8.95**  
Each

Sizes small (34-38-inch chest); medium (39-42); large (43-46). Shpg. wt. 2 lbs. 14 oz.  
33 N 1957—Maroon 33 N 1958—Navy blue. Please state size..... Each \$8.95



## Luxurious Lounging Jackets

Is he hard to please? Does he seem to have just about everything? Then surprise him with a luxurious Pilgrim Lounging Jacket... comfortable, dressy... for pleasant, leisurely evenings at home, even when guests drop in. Smart and dashing with a scarf... neat and good looking over a shirt. **\$8.95**  
Each

He'll like the soft virgin wool flannel, the superlative Pilgrim tailoring. Wrap-around model with contrasting shawl collar, cuffs, sash; 3 pockets. Dry clean. Boxed. **\$8.95**  
Each

Sizes small (34-38-in. chest); med. (39-42); large (43-46). State size. Shpg. wt. 2 lbs. 3 oz.  
33 N 1937—Navy with maroon  
33 N 1938—Maroon with navy..... \$8.95

**Warm, medium weight, all wool worsted**

**A** A Favorite classic coat of all virgin wool worsted, tight rib knit. Taped neck, shoulder seams. Double fabric elbows. 6-button front. Hand wash separately. Shpg. wt. 1 lb. 6 oz. **\$379**

Chest sizes 36, 38, 40, 42, 44, 46 inches. Please state size.  
 83 N 2270—Brown heather      83 N 2271—Dark gray  
 83 N 2272—Navy blue.....\$3.79  
**Zipper front**—100% virgin wool worsted rib knit. Same features, sizes, shpg. wt. as above. Please state size.  
 83 N 2276—Brown heather      83 N 2277—Dark gray  
 83 N 2278—Navy blue.....\$4.29



**B** Sportier "cool" of 100% virgin wool worsted. Soft, very close interlock knit. Tape reinforced shoulder and neck seams. Hand wash separately. Shpg. wt. 1 lb. 6 oz. **\$689**

Chest sizes 36, 38, 40, 42, 44, 46 inches. Please state size.  
 83 N 2065—Medium tan      83 N 2066—Rust brown  
 83 N 2067—Medium blue.....\$6.89  
**Extra large sizes**—Interlock knit, 100% virgin wool worsted. Same features as 33 N 2065 above.  
 Chest sizes 48, 50, 52 in. State size. Shpg. wt. 1 lb. 10 oz.  
 83 N 2293—Med. tan      83 N 2294—Med. blue...\$7.45



**Pilgrim**  
 THE RIGHT WAY  
 TO SAY  
**MEN'S  
 FURNISHINGS**

**C** \$4.98



**2-ply all wool worsted "baby shaker"**  
**\$498** **C** We're proud to offer this value-loaded "coat" at this modest price . . . it's our "Christmas sweater special." Fine baby shaker knit of all wool worsted-2-ply yarns (2 single strands of yarn twisted tightly together for increased strength); so warm and soft, yet sturdy, serviceable. Knit-on rib cuffs and smart narrow bottom are marks of superior Pilgrim workmanship. Trim 6-button front, non-stretch buttonholes. Set-in pockets. Hand wash separately.  
 Chest sizes 36, 38, 40, 42, 44, 46 inches. State size. Shpg. wt. 1 lb. 6 oz.  
 83 N 2032—Camel (med.) tan.      83 N 2033—Royal blue  
 83 N 2034—Maroon.....\$4.98



**D** \$2.94



**E** \$3.94

**Sleeveless styles . . . two fine wools**

**\$294** **D** All virgin wool 2-ply yarns (double strands tightly twisted together for extra strength) knit in good looking, fine baby shaker stitch. Super-soft, medium weight; is smooth and comfortable worn under a sport jacket or suit coat . . . won't bind or bunch up. Smart styling he'll like . . . trim V-neck looks dapper with dress or sports shirt. Rib-knit neck, waist and armholes help hold shape, insure lasting good fit. Hand wash separately.  
 Sizes small (34-36-in. chest); medium (38-40); large (42-44). Please state size. Shipping weight 12 ounces.  
 83 N 2133—Maize (yellow)      83 N 2135—Med. blue  
 83 N 2134—Camel (medium) tan.....\$2.94

**\$394** **E** Wool worsted, cable stitch front, vertical panel rib effect back. Washed 100% virgin wool worsted for rich, soft feel. Lightly brushed finish. Though machine knit this pullover has rugged good looks, rich appearance of a hand knit. V-neck, armholes, waist are rib knit for neater fit. Tape bound neck, shoulder seams. A grand gift to make that man mighty happy this yuletide. Hand wash separately.  
 Sizes small (34-36-in. chest); medium (38-40); large (42-44). Please state size wanted. Shpg. wt. 12 oz.  
 83 N 2084—Maize (yellow)      83 N 2086—White  
 83 N 2085—Camel (medium) tan.....\$3.94



**A**  
\$3.98



**B**  
\$4.98



**C**  
\$4.98

**100% wool worsted baby shaker**

**A** A warm, smartly styled pullover that will please that man this Christmas . . . at a price well within most gift budgets. Note these Pilgrim quality features: Soft, 2-ply all wool worsted yarns (double strands tightly twisted together for extra strength) knit in fine baby shaker stitch. Knit-on, snug fitting rib cuffs and bottom; trim V-neck. Taped neck and shoulder seams give lasting good fit. Medium weight. Solid colors he'll like. Hand wash separately. **\$3.98**  
Chest sizes 36, 38, 40, 42, 44, 46 inches. Please state size. Shipping weight 1 pound 1 ounce.  
83 N 2029—Camel (med.) tan  
83 N 2031—Maroon  
83 N 2030—Medium blue. . . . . \$3.98

**Fine Zephyr Wool and Mohair**

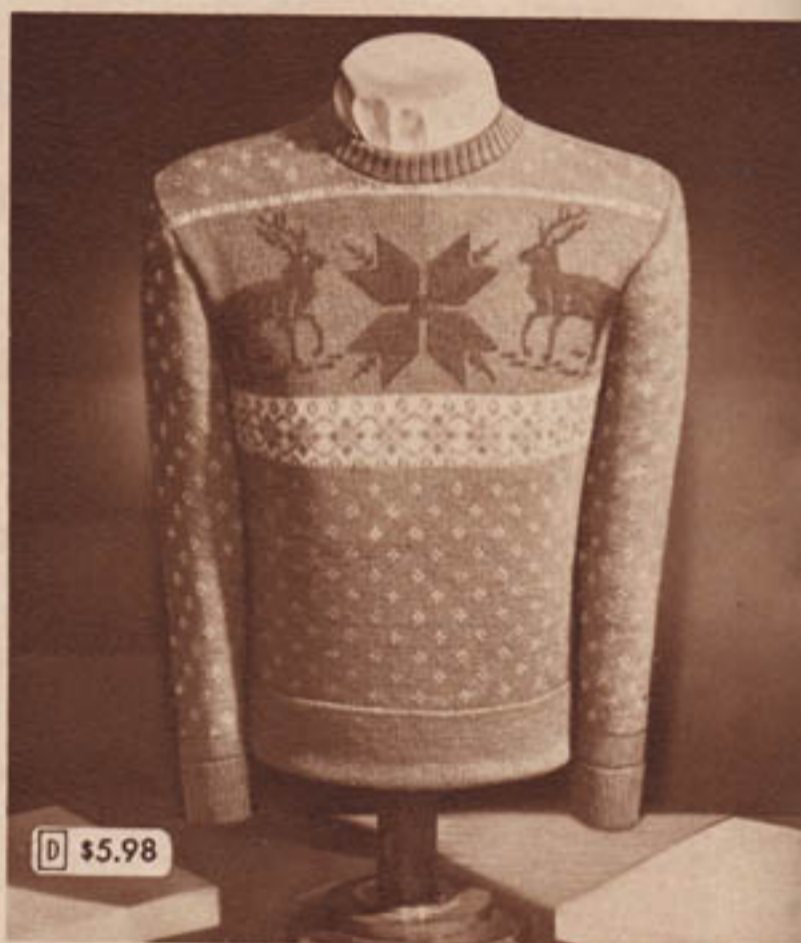
**B** A high quality Pilgrim tailored pullover of a warm, soft, all wool blend of 90% Zephyr, 10% kid mohair . . . a combination that wears unusually well. Lightweight, slightly brushed, knit in fine-gauge baby shaker stitch . . . warm, smart, not bulky; comfortable under a suit coat. Tape reinforced neck and shoulder seams resists stretching. Knit-on rib cuffs and bottom. Trim V-neck. Hand wash separately. **\$4.98**  
Chest sizes 36, 38, 40, 42, 44, 46 inches. Please state size. Shipping weight 14 ounces.  
83 N 2026—Camel (medium) tan  
83 N 2027—Maize—(yellow)  
83 N 2028—Medium blue. . . . . \$4.98

**Novel design . . . 2-ply worsted**

**C** A new, warm and colorful pullover with novel "zig-zag all around" pattern. It's sure to make a hit with the man who likes sports clothes. Knit of warm, long wearing 100% wool worsted, 2-ply yarns (tightly twisted double strands of long fibered yarns assure greater strength). Rib cuffs and bottom have elastic knit-in for comfortable, snug fit. Smart looking, trim V-neck. Shoulder and neck seams are knit taped for lasting good fit. Hand wash separately. **\$4.98**  
Sizes small (34-36-inch chest); medium (38-40); large (42-44). State size. Shpg. wt. 14 oz.  
83 N 2024—Light tan with brown pattern.  
83 N 2025—Royal blue with red pattern. \$4.98

**Gay Jacquard knit-in design**

**D** For a double "thank you" give him one of these authentic Jacquard pattern pullovers . . . he'll wear it with lasting pride for it's one of the most outstanding styles of the Christmas season. Handsome reindeer-snowflake design knit of warm, sturdy 100% wool worsted. Stylish, double thick, rib knit crew neck holds shape. Solid color, knit-on cuffs, bottom. Reinforced shoulder, neck seams. Hand wash separately. Shpg. wt. 14 oz. **\$5.98**  
Sizes small (34-36-inch chest); medium (38-40); large (42-44). Please state size.  
83 N 2022—Navy background  
83 N 2023—Maroon background. . . . \$5.98



**D** \$5.98

**Dashing Tee Shirts men like so well**

**E** Solid colors, solid comfort. Close, flat knit of combed cotton. Short sleeves. Hand washable. Sizes small (34-36-inch chest); medium (38-40); large (42-44). Please state size. Shipping weight 6 ounces. **94c**  
83 N 1838—Tan 83 N 1839—White  
83 N 1840—Blue. . . . . 94c

**F** "Buccaneer" stripes. Flat knit combed cotton. Short sleeves. Taped neck, shoulder seams. Hand washable. Sizes small (34-36-inch chest); medium (38-40); large (42-44). Please state size. Shipping weight 7 ounces. **\$1.09**  
83 N 1827—Blue 83 N 1828—Maroon  
83 N 1829—Brown. . . . . \$1.09

**G** Jacquard knit-in pattern. Novel cotton knit. Short sleeves. White rib-knit bottom. Hand washable. Sizes small (34-36-inch chest); medium (38-40); large (42-44). Please state size. Shipping weight 11 ounces. **\$1.94**  
83 N 1795—Maroon on white  
83 N 1796—Blue on white. . . . . \$1.94

**H** Fancy knit-in pattern, long sleeves. Cotton, novel stitch. Solid color rib-knit bottom. Hand washable. Sizes small (34-36-inch chest); medium (38-40); large (42-44). Please state size. Shipping weight 12 ounces. **\$1.94**  
83 N 1797—Blue 83 N 1798—Maroon. . . . \$1.94



**E**  
94c

**F** \$1.09

**G**  
\$1.94

**H** \$1.94



# Men's Pilgrim Underwear, Handkerchiefs

"the joyous Christmas time returning  
brings good tidings, true and dear."

Back in time for gift giving . . .

## Luxurious Rayon Shirts, Shorts, Briefs

- Smooth, silk-like rayon in a run-resistant tricot knit
- Very finely knit to fit trimly, conform to body lines
- Comfortable, all elastic waistband on shorts, briefs

Just about the most luxurious yet practical gift that a man can get is this soft rayon underwear with a nice silk-like feeling against his skin. Durable, too, because it's 2-bar tricot knit for run-resistance. And there's nothing like finely knit rayon for body-hugging fit!

Shirts are cut full and long with neatly hemmed bottoms to guard against curling. Tubular bound neck and armholes add to comfortable wear.

Trim-fitting Shorts have curved panel seat and life-of-the-garment elastic waistband. Fly front is completely buttonless. Neatly hemmed leg openings fit smoothly. Smooth flatlocked seams.

Briefs have the all-elastic waistband, buttonless fly front, and hemmed leg openings. Double fabric front panel adds to his comfort, too.

Color white. Shipping weight each 5 ounces. Please state size.

<b>A</b> Shirts. Sizes small (34-36-in. chest); med. (38-40); large (42-44); and extra large (46). 16 N 5130 Each.....\$1.35 3 for.....\$3.95	<b>B</b> Shorts. Sizes small (30-32-in. waist); med. (34-36); large (38-40); extra large (42-44). 16 N 5131 Each.....\$1.45 3 for.....\$4.25	<b>C</b> Briefs. Sizes small (30-32-in. waist); med. (34-36); large (38-40); extra large (42-44). 16 N 5133 Each.....\$1.15 3 for.....\$3.35
--	---	---



### Our best Briefs, colored waistband

New and different colored elastic waistband and superior Durene cotton fabric bring our finest Vee Line tailored briefs into the "ideal for his gift" class. Durene cotton yarns are better than ordinary yarns on all counts—wear, comfort, appearance. The select cotton yarns are all 2-ply, combed to remove all short, rough fibers, mercerized for added strength and smoothness. Waistband comes in assorted colors.

These Pilgrim Vee Line briefs also feature a double fabric crotch, scientifically designed to follow body lines; fabric strap reinforcement to give mild, restful support. Comfortable, seam-free seat; snug elastic in tubular band leg openings.

Shirt pictured above is described at right.  
Color white. Sizes small (30-32-in. waist); medium (34-36); large (38-40); and extra large (42-44). Please state size in order.  
16 N 5125—Shipping weight each garment 5 ounces. Each 95c 4 for \$3.69



### For gift giving . . . fine Cotton Shorts and Shirts

To make his Christmas merry, give him these luxury cotton shorts and shirts at thrift-giving prices. The shorts are fine woven dress shirt fabric with a very high count. Sanforized to keep shrinkage less than 1%.

Shorts have a French back with 6-button adjustment for perfect fit and comfort. 3 rust-resistant Gripper Fasteners in front. Bar tacking at fly and at all strain points. Curved panel seat. Pleated front and full single needle stitched yoke and back belt. Assorted colors and patterns.

Sleeveless shirts of fine long staple cotton yarns twisted over and over to make them extra strong, extra soft and absorbent. Mercerized for luster and additional durability. Hemmed bottom guards against curling. Cut full and long; tubular bound neck and armholes. Color white. Shipping weight each 5 ounces.

Shorts sizes 30, 32, 34, 36, 38, 40, 42, 44-inch waist. Shirt sizes 36, 38, 40, 42, 44, 46-inch chest. Please state size.  
16 N 5185—Shorts Each 95c 4 for \$3.69  
16 N 5192—Shirts Each 89c 4 for \$3.49

Underwear, too, can be included in your next Sears Easy Terms order . . . details on page 256

ALL PAGE 21 . . . MEN'S UNDERWEAR



## Pilgrim Positive Wear Guaranteed Socks

### Dressy look . . . work sock durability

3 pairs must wear 3 months or you get 3 pairs free (applies to purchase of 3 pairs same size). We can make this strong guarantee because these seamless socks are firmly knit of soft, durable yarns; have reinforced heels, toes; double soles. Shpg. wt. 3 prs. 12 oz.

- |  |  |  |
|--|--|--|
| <p><b>A</b> Combed cotton, strong and absorbent. 4-ply heels, toes. <b>3 prs. 89c</b></p> <p>Sizes 10½, 11, 11½, 12, 13. Please state size, color. 86 N 1403—Regular length. Colors dark brown, black, white. 86 N 1404—Short length. Colors gray, brown, white.</p> | <p><b>B</b> Mercerized cotton, softer, stronger, lustrous. Long-wearing 2-ply body; 4-ply heel, toe. Colors black, medium gray, white. Sizes 10½, 11, 11½, 12, 13. Please state size and color. 86 N 1405—Regular length 86 N 1406—Short length <b>3 prs. \$1.05</b></p> | <p><b>C</b> Rayon and nylon, richly lustrous, strongest of all. Mercerized cotton tops, soles; heels, toes nylon reinforced. Colors black, brown, gray, white. Sizes 10, 10½, 11, 11½, 12, 13. State size, color. 86 N 1409—Regular length 86 N 1410—Short length <b>3 prs. \$1.49</b></p> |
|--|--|--|



## Pilgrim Dress Socks . . rich rayon and nylon

Smartly conservative styling, solid colors in a long-wearing dress sock. Mercerized cotton top, sole; nylon in heel, toe. Shpg. wt. pr. 3 oz. Sizes 10, 10½, 11, 11½, 12, 13. Colors black, brown, maroon, white. **49c pr. 3 Pairs for \$1.42**

86 N 2032—Short length. 86 N 2031—Regular length. State size and color.

### SIZE SCALE FOR MEN'S SOCKS

If Shoe Size is.....	6½-7.....	7½-8.....	8½-9.....	9½-10.....	10½-11.....	11½-12.....
Order Sock Size.....	10.....	10½.....	11.....	11½.....	12.....	13.....



## Men's Pilgrim Dress Socks

Shown in brilliant colors on opposite page

Stock socks in sparkling Christmas-trimming colors to delight the man in your life, whether he's young or old. He'll think these brilliant new patterns were created just for him. And these gorgeous colors and patterns are ingrained (dyed before knitting) to insure long-lasting beauty. Durable, too, because the selected cotton yarns are 4-ply, mercerized for strength and smoothness. Shipping weight pair 4 oz.

Sizes 10, 10½, 11, 11½, 12. Please state size, color. . . . Pair **48c** **3 prs. \$1.42**

- |  |   |   |
|--|---|---|
| <p><b>D</b> Multicolor "zig-zag," ingrain pattern on rich, gay colors. Colors brown, navy blue, maroon. 86 N 2026—Short length</p> | <p><b>E</b> Gay Christmas-y colors, ingrain checks, eye-catching. Colors medium tan, navy blue, green, wine. 86 N 2025—Short length</p> | <p><b>F</b> Ingrain Argyle in bright and cheery colors to please him. Colors brown, navy blue, maroon. 86 N 2042—Short length</p> |
|--|---|---|

**G** Rayon and silk, assorted patterns knit-in. Silky-soft dress socks in rich, deep colors. Finely knit rayon and silk body; 4-ply mercerized cotton tops, heels, toes; double sole. Shpg. wt. pr. 4 oz. State size, color. Sizes 10, 10½, 11, 11½, 12, 13. Colors brown, navy, gray, maroon. **3 prs. 86 N 1959—Regular length 86 N 1960—Short length. Pair 48c \$1.42**

**H** Rayon and nylon, with attractive embroidered clock. Handsomely styled in smart colors; finely knit. Mercerized cotton heels, toes, tops; double sole; high spliced heel. Shpg. wt. pr. 4 oz. State size and color. Sizes 10, 10½, 11, 11½, 12. Colors brown, black, medium gray. **3 prs. 86 N 2029—Regular length 86 N 2030—Short length. Pair 48c \$1.42**

**J** 6x3 rib cotton, embroidered clock in sparkling colors. Softly lustrous, distinguished-looking 6x3 "ribs," finely knit of strong, smooth 2-ply mercerized cotton. 3-thread heels, toes. Shipping weight pair 4 oz. Sizes 10, 10½, 11, 11½, 12, 13. Colors maroon, brown, navy. **3 prs. 86 N 2028—Regular length. Please state size, color. . . . Pair 85c \$2.45**

**K** Cotton and rayon, wool-like texture; clock-effect design. Even Junior on his limited budget can buy these socks for Dad. Shpg. wt. pr. 4 oz. Sizes 10, 10½, 11, 11½, 12. Colors brown, green, maroon, navy. **4 prs. 86 N 1919—Regular length. Please state size, color. . . . Pair 25c 95c**

**L** Rayon body, knit-in assorted patterns; finely knit. Mercerized cotton tops, heels, toes; double sole. Shipping wt. pr. 4 oz. State size, color. Sizes 10, 10½, 11, 11½, 12, 13. Colors brown, maroon, navy blue. **3 prs. 86 N 1933—Regular length 86 N 1934—Short length. Pair 39c \$1.15**

**M** Pure silk body, sparkling patterns knit-in. Luxuriously soft, smart looking socks in rich, handsome colors. Very finely knit; mercerized cotton heel, toe; double sole. Shpg. wt. pr. 4 oz. State size, color. Sizes 10, 10½, 11, 11½, 12, 13. Colors brown, maroon, medium gray, navy blue. **3 prs. 86 N 1957—Regular length 86 N 1958—Short length. Pair 65c \$1.89**

## Our finest 100% Wool Dress Socks

**N** 6x3 rib all Virgin wool, solid colors. For conservative styling, for distinguished-looking colors, for wool warmth, this is his gift sock! Reinforced heels, toes; yarns treated to retard shrinkage. Shpg. wt. pr. 4 oz. Sizes 10, 10½, 11, 11½, 12, 13. Colors brown, navy, oxford gray. **3 prs. 86 N 2119—Regular length. Please state size and color. . . Pair 79c \$2.30**

**P** 100% Virgin wool Argyle in rich colors. Gay and sparkling as Christmas trimmings yet with a distinguished air are these feet-warming Argyles in their heart-warming colors. Shpg. wt. pr. 4 oz. State size, color. Sizes 10½, 11, 11½, 12, 13. Colors brown, maroon, navy blue. **3 prs. 86 N 2113—Regular length 86 N 2114—Short length. Pair 98c \$2.89**

**R** 6x3 rib all new wool, latest-type patterns knit-in. Soft 2-ply wool yarns in rich, warm colors. Knit on genuine English rib machines. Treated for shrinkage to retain fit. 3-ply heels, toes. Shpg. wt. pr. 4 oz. Sizes 10½, 11, 11½, 12. Colors brown, maroon, navy blue. **3 prs. 86 N 2136—Regular length. Please state size and color. Pair \$1.35 \$3.95**



**D** Multicolor "zigzag,"  
ingrain pattern



**E** Gay Christmas colors,  
ingrain checks



**F** Ingrain Argyle in bright  
and cheery colors

For his very Merry Christmas—Pilgrim Gift Socks in gay colors,  
distinctive patterns; finely knit of 4-ply mercerized cotton . . . Pair

**48c** 3 pairs  
\$1.42



**G** Pair 48c  
Rayon and silk,  
assorted patterns



**H** Pair 48c  
Rayon and nylon  
smart Swiss clock



**J** Pair 85c  
6x3 rib cotton  
embroidered clock



**K** Pair 25c  
Cotton and rayon,  
wool-like texture



**L** Pair 39c  
Rayon body, knit-in  
assorted patterns



**M** Pair 65c  
Pure silk body,  
sparkling patterns

For a Merry Christmas and a warm one, give him handsome Wool Socks



**N** Pair 79c  
6x3 rib all virgin  
wool, solid colors



**P** Pair 98c  
100% virgin wool  
Argyle, rich colors



**R** Pair \$1.35  
6x3 rib all wool,  
latest pattern



**Pilgrim Pass Case Wallet**, the gift that's sure to please! Combines quality, utility, and style at Sears low price. Removable leather bound pass case with 4 swing windows, secure snap button closing, clever pocket for carrying extra key in pass case. Zipper closing bill pocket, open bill pocket, large coin pocket with one gusset, card pocket. *State* black in hand-grained Morocco (goatskin) or shaded brown goatskin. 25 N 2880E—Closed 3½x4½ inches.

Shipping weight 5 ounces. Federal Tax included. . . . . **\$3.50**



**Swank "Aristogram."** The personalized wallet . . . three handsome cut-out gold plated metal initials attached to removable leather card case make it "his alone." Carefully made of supple hand-grained Morocco (goatskin), special interlocked tailored construction. Zip closing bill pocket, open bill pocket, card pocket. *Please state color* black or brown. *Closed size* 3½x4½ inches. See matching "Swank" initialed jewelry, page 37. Choose both for a fashionable, enduring Christmas gift. (Shpg. wt. 4 oz.)

25 NR 3004E—Print 3 initials wanted. Postpaid. Fed. Tax included. **\$.60**

### Famous Amity "Director" Wallets



Spare key pockets to prevent lockouts



Sliding card pocket for greater convenience



Secret currency pocket means extra safety →

**Nationally advertised!** Make really handsome gifts! 8 unmatched big features include secret bill pocket, open bill pocket, "Findex" sliding card pocket, other card and key pockets, free registration service, 4 transparent card holders, sliding stay, turned edges stitched with nylon for added strength and lasting beauty. *Closed* 3½x4½ inches. *Postpaid.* (Shpg. wt. 6 oz.) 20% Federal Tax included.

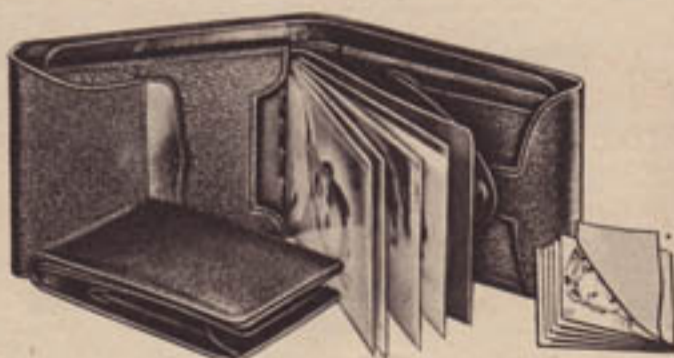
**Genuine Calfskin Leather.** *State color* silvertone brown or black.  
25N3024E  
Each . . . . . **\$9.00**

**Levant (pebble) grained Goatskin.** Has coin pocket. *State color* brown, black.  
25N2973E  
Each . . . . . **\$6.00**

**Morocco-grained Pigskin.** *Please state color* brown or black.  
25N3217E  
Each . . . . . **\$4.20**



**Deluxe Quality Wallet.** Fine calf-grained brown goatskin. Decorative embossing, and hand-laced India goatskin edges make a distinctive, treasured gift. Divided bill pockets, zipper coin pocket, handy stamp holder in pocket, 4 transparent holders in card pocket. *Closed* 3½x4½ inches Shpg. wt. 5 oz.  
25 N 3025E—Fed. Tax incl. **\$5.95**



**Morocco Leather Wallet with Slip-in Pass Case.** Pass photo case with leather cover has 4 swing windows . . . fits into card pocket, or can be carried separately. Divided bill pocket, snap button coin pocket. Fine supple hand-grained Morocco leather. *State* black or brown. *Closed* 3½x4½ inches. Shipping weight 6 ounces.  
25 N 3010E—Fed. Tax incl. **\$4.69**



**Pilgrim Zip closing 6-hook Key Cases.**  
A 2-sided zip. *Closed* 2¾x3½ in. *State* black calfskin, brown steerhide, tan cowhide. Tax included.  
25 N 2797E—Wt. 4 oz. . . . . **\$1.79**  
B 3-sided zip. *Closed* 2¾x3¾ in. Shell cordovan leather. *State* brown or mahogany.  
25 N 2788E—Wt. 4 oz. . . . . **\$2.50**





Gilt color clip ends, trim.  $\frac{3}{4}$ -in. wide fancy rayon and cotton elastic webbing in assorted stripes. Free action adjustable back. Boxed. Shpg. wt. 3 oz. Lengths 38 or 42 in. Colors blue, maroon, brown. Please state length and color.  
**33 N 3630**..... Each **88c**

Tan cowhide leather button-on ends.  $\frac{3}{4}$ -in. rayon and cotton elastic webbing in assorted gay colored stripes; adjustable back. Boxed. Shpg. wt. 3 oz. Lengths 38 or 42 in. Colors maroon, blue, brown. Please state length and color.  
**33 N 3631**..... Each **88c**

Solid color rayon and cotton elastic webbing.  $\frac{3}{4}$ -inch tan cowhide leather button-on ends, gilt color metal parts; adjustable back. Boxed. Lengths 38 or 42 in. Colors blue, maroon, brown. State length, color. Shpg. wt. 3 oz.  
**33 N 3632**..... Each **88c**

Comfortably wide...  $1\frac{1}{4}$ -in. solid color better quality rayon and cotton elastic webbing. Tan pigskin button-on ends, neatly stitched. English "Y" back. Boxed. Shpg. wt. 3 oz. Lengths 38, 42 in. Colors brown, maroon, blue. State length, color.  
**33 N 3633**..... Each **\$1.39**

Dressy...  $1\frac{1}{4}$ -in. better quality rayon and cotton elastic webbing, assorted stripes. Tan pigskin button-on ends, neatly stitched. Adjustable back. Boxed. Shpg. wt. 3 oz. Lengths 38, 42 in. Colors blue, maroon, brown. State length, color.  
**33 N 3634**..... Each **\$1.39**

## Pilgrim Furnishings.. Belts, Sets, Suspenders

"far and wide the tale repeating,  
Christmas time at last is here."



Each belt or set is attractively boxed



3-pc. set... belt, collar bar, buckle. 1-in. pigskin belt, pig-grained cowhide lining. 1-in. solid bronze buckle with mother of pearl inlay; black enamel raised initial; solid bronze collar bar. Shpg. wt. set 7 oz. Sizes 30, 32, 34, 36, 38, 40, 42, 44-in. waist. State size, print initial or state plain.  
**33 N 4226E**—Black  
**33 N 4227E**—London tan... Set **\$1.98**  
 Price includes 5c Federal Tax.



All initials available except I, O, Q, U, V, X, Y, Z

Buckle and belt set... 1-in. belt of hand boarded top grain cowhide, matching lining. 1-in. solid bronze buckle with 2-tone design of bronze and silver plate. Black enamel stamped initial or plain. Shpg. wt. set 6 oz. Sizes 30, 32, 34, 36, 38, 40, 42, 44-in. waist. State size, print initial or plain.  
**33N4229E**—Black **33N4230E**—Brown  
**33N4231E**—Suntan... Set **\$2.44**  
 20c Federal tax included.



Economical dress belt... 1-in. belt of smooth, solid top grain cowhide with a solid brass tongue buckle. Priced for thrifty Christmas giving. Boxed. Sizes 30, 32, 34, 36, 38, 40, 42, 44-in. waist. State size. Shpg. wt. 4 oz.  
**33N4241**—Black  
**33N4242**—Brown  
**33N4243**—Suntan... Each **98c**



Covered buckle dress belt... 1-in. padded belt of smooth hand boarded top grain cowhide, with cowhide lining. Leather covered metal buckle. Sizes 30, 32, 34, 36, 38, 40, 42, 44-in. waist. Please state size. Shpg. wt. 5 oz.  
**33N3712**—Tan  
**33N3715**—Black  
**33N3716**—Brown... Each **\$1.44**



Expanding style... 1-in. belt of solid top grain bridle cowhide, smoothly finished. Concealed spring lets belt "give" a full inch. Solid brass buckle. Sizes 30, 32, 34, 36, 38, 40, 42, 44-in. waist. Please state size. Shpg. wt. 5 oz.  
**33N4211**—Black  
**33N4212**—Brown  
**33N4213**—Tan... Each... **\$1.50**



Our finest quality... 1-in. belt of genuine mule shell cordovan in a smooth, dressy finish; softly sueded inside. Smart, polished solid bronze buckle. Sizes 30, 32, 34, 36, 38, 40, 42, 44-in. waist. State size. Shipping wt. 5 oz.  
**33N4220**—Redwood (reddish brown)  
**33N4219**—Black  
 Each... **\$2.44**



**Dressy stripes . . .** 1 3/4-in. better quality rayon and cotton elastic webbing in assorted fancy colored stripes. Gilt color metal clip ends and trim. Comfortable free action adjustable back. Individually boxed. Shipping weight 3 ounces.

Colors blue, maroon, brown. Lengths 38 or 42 in. State length and color.

33 N 3635 . . . . . Each \$1.39



**Our best Pilgrim Gift Set**

- Our finest quality genuine seal leather belt
- Accessories gold and silver plated
- Each set attractively boxed for gift giving

**5-piece set . . . belt, buckle, key chain with clip, tie bar, collar bar. \$4.98**  
 1-inch belt is our finest long grain genuine seal leather lined with smooth top grain cowhide—superbly Pilgrim tailored with snap end.

All accessories are made of solid bronze. 1-inch buckle is triple silver plated, with 24K yellow gold plated raised initial. 24K gold plated key chain has emblem mounted on triple silver plated clip. Triple silver plated double grip tie bar has 24K gold plated emblem. 24K gold plated collar bar is shaped to hold collar securely without wrinkling it.

Sizes 30, 32, 34, 36, 38, 40, 42, 44-inch waist. Please state size, print initial or state plain. 51c Federal Excise tax included. Shipping weight each set 10 ounces.  
 33 N 4235E—Black 33 N 4236E—Brown Set . . . . . \$4.98

**PLEASE NOTE:** On initialed sets, all initials are available except I, O, Q, U, V, X, Y, Z.

**Pilgrim**  
 THE RIGHT WAY  
 TO SAY  
**MEN'S  
 FURNISHINGS**



**Fine Pilgrim Gift Set in cedar box**

- Our best quality top grain cowhide belt, nylon stitched
- Heavy sterling silver buckle with stamped initial
- Each set gift packaged in a beautiful cedar box

**Initialed buckle and belt set. 1 3/4-inch belt of our finest quality hand boarded top grain cowhide with matching cowhide lining. Superb Pilgrim tailoring, with nylon stitched edges. \$4.49**  
 2-pc. set

1 3/4-inch heavy sterling buckle has a satin finish center with stamped initial in black, and shiny striped sides. Also available without initial. Attractive cedar gift package. Shipping weight set 10 ounces.

Sizes 30, 32, 34, 36, 38, 40, 42, 44-inch waist. State size, print initial or state plain. 28c Fed. Excise Tax included.  
 33 N 4244E—Black 33 N 4245E—Brown. . . Set \$4.49



**4-pc. Cameo set . . . belt, buckle, collar bar, tie clip. \$3.44**  
 4-pc. set  
 1-in. belt of hand boarded top grain cowhide; smooth cowhide lining. Pilgrim tailored with finely stitched snap end. Plastic cameos mounted on the hand polished solid bronze 1-in. buckle and wishbone shape tie clip. Double grip collar bar. Boxed. Shpg. wt. set 7 oz.  
 Sizes 30, 32, 34, 36, 38, 40, 42, 44-in. waist. Please state size. Price includes 13c Federal Excise Tax.  
 33 N 4232E—Black 33 N 4233E—Brown  
 33 N 4234E—Suntan. . . . . Set \$3.44



**1 Studded Western style . . .** 1 3/4-in. belt of solid top grain bridle cowhide. Nickel plated rust-resistant metal studs; break-resistant plastic jewels. Boxed. Sizes 30, 32, 34, 36, 38, 40, 42, 44-inch waist. Please be sure to state size wanted. Shipping weight 8 ounces.  
 33 N 3750—Black  
 33 N 3751—Tan . . . . . \$1.94

**2 Picture buckle . . .** 1 3/4-in. dress belt made of solid top grain bridle cowhide. The heavy nickel plated slide buckle opens in front for picture, identification. Sizes 30, 32, 34, 36, 38, 40, 42, 44-inch waist. Please state size. Shipping weight 5 oz.  
 33 N 4217—Black  
 33 N 4218—Brown . . . \$1.94

**3 Thrifty gift . . .** 1-in. dress belt of solid top grain cowhide with grained surface. Bright finish heavy nickel plated slide buckle. Boxed. Shipping weight 5 ounces. Sizes 30, 32, 34, 36, 38, 40, 42, 44-inch waist. Please be sure to state size wanted.  
 33 N 4221—Black  
 33 N 4222—Brown . . . 98c

**4 Silver and gold plated buckle; calf grained cowhide 1-inch belt. Stamped initial or plain.** Sizes 30, 32, 34, 36, 38, 40, 42, 44-in. waist. 16c Fed. Excise Tax included. State size, initial or plain. Shpg. wt. 5 oz.  
 33 N 4201E—Black  
 33 N 4202E—Brown  
 33 N 4203E—Suntan. \$1.88

**5 Double silver plated brass buckle, hammered effect center. 1-in. solid top grain cowhide belt. Sizes 30, 32, 34, 36, 38, 40, 42, 44-in. waist. Please state size. Shpg. wt. 6 oz. 8c Federal Tax included.**  
 33 N 4223E—Black  
 33 N 4224E—Brown  
 33 N 4225E—Suntan. \$1.44

Three handsome styles illustrated available unlined, wool lined or fur lined



Knit wool linings are soft, fleecy, comfortably warm



Warm fur linings are soft-as-down Coney rabbit fur



A

**Imported capeskin**

Unlined . . . . . \$2.95  
Wool lined . . . . . 3.95  
Fur lined . . . . . 4.95



B

**Imported cabretta**

Unlined . . . . . \$3.95  
Wool lined . . . . . 4.95  
Fur lined . . . . . 5.50



C

**Genuine deerskin**

Unlined . . . . . \$4.50  
Wool lined . . . . . 5.50  
Fur lined . . . . . 5.95

*Pilgrim Dress Gloves,  
fine leathers, wool knits*

"sing we joyous all together,  
heedless of the wind and weather."



**Rich mellow leathers, soft and flexible as your skin... but tough, too Sidewall construction for fine fit**

Imported capeskin . . . soft, pliable, durable

Unlined Pair **\$2.95** Wool lined Pair **\$3.95** Fur lined Pair **\$4.95**

A Not just ordinary capeskin, but imported leathers of select quality go into the making of these gift gloves . . . leathers that have been tanned to a mellow softness, then fashioned into as handsome gloves as you'll see anywhere. Full sidewall "free action" styling; pattern cut to insure comfort and perfect fit. Whipstitch sewn all around. Stitched backs. Slip-on style. A grand gift, anytime!

Colors black or brown. Please state size and color wanted.

Unlined. Sizes 8, 8 1/2, 9, 9 1/2, 10, 10 1/2. Shipping weight each pair 5 ounces. 33 N 2441—	100% wool lined. Sizes small (8-8 1/2); med. (9-9 1/2); large (10-10 1/2). Wt. 6 oz. 33 N 2565—	Fur lining. Sizes small (8-8 1/2); med. (9-9 1/2); large (10-10 1/2). Shpg. wt. 8 oz. 33 N 2615—
Pair . . . . . \$2.95	Pair . . . . . \$3.95	Pair . . . . . \$4.95

Luxurious, velvety-soft cabretta leather

Unlined Pair **\$3.95** Wool lined Pair **\$4.95** Fur lined Pair **\$5.50**

B You'll make HIS Christmas an unforgettable one with a gift as distinguished as these slip-ons. Top quality is evident in every detail, from superlative imported leather down to non-ravel whipstitching all around. Fine cabretta is made from lambs whose skins are toughened by the hot sun of equatorial Brazil; carefully tanned to stay soft. Smart sidewall style, table cut for perfect fit. Hand felled hem, hand staggered back; expansion top.

Colors, tan or black. Each pair boxed. State size and color.

Unlined. Sizes 8, 8 1/2, 9, 9 1/2, 10, 10 1/2. Shipping weight each pair 5 ounces. 33 N 2424	100% wool lined. Sizes small (8-8 1/2); med. (9-9 1/2); large (10-10 1/2). Shpg. wt. pair 6 oz. 33 N 2567—	Fur lining. Sizes small (8-8 1/2); med. (9-9 1/2); large (10-10 1/2). Shpg. wt. pair 8 oz. 33 N 2612—
Pair . . . . . \$3.95	Pair . . . . . \$4.95	Pair . . . . . \$5.50

Genuine deerskin . . . rugged, pliable

Unlined Pair **\$4.50** Wool lined Pair **\$5.50** Fur lined Pair **\$5.95**

C If he's tough on gloves, make him a present of these handsome slip-ons. They're as rugged as dress gloves can be made, without detracting one bit from their smart styling. The secret's in the leather . . . top quality deerskin, known for its flexibility, its amazing resistance to wear. Strongly whipstitched. Sidewall construction, table cut for perfect fit. Expansion hem. Boxed.

Colors natural (med. tan); yucatan (reddish tan). State size, color.

Unlined. Sizes 8, 8 1/2, 9, 9 1/2, 10, 10 1/2. Shipping weight each pair 6 ounces. 33 N 2423—	100% wool lined. Sizes small (8-8 1/2); med. (9-9 1/2); large (10-10 1/2). Wt. 6 oz. 33 N 2568—	Fur lining. Sizes small (8-8 1/2); med. (9-9 1/2); large (10-10 1/2). Shpg. wt. pair 8 oz. 33 N 2614—
Pair . . . . . \$4.50	Pair . . . . . \$5.50	Pair . . . . . \$5.95



**B** South African capeskin Slip-on or snap \$3.95

**C** Horsehide, lined with lambskin \$5.39

**A** Suede... Slip-on or snap styles \$3.50

**D** Imported Pigskin Slip-on or snap \$5.95

**Pilgrim**  
THE RIGHT WAY  
TO SAY  
**MEN'S  
FURNISHINGS**

**Pigskin, suede, capeskin, horsehide . . . Pilgrim Gift Gloves in fine leathers, smart styles to please the most critical male**

**A** Gray suede in two styles. For the man who dresses conservatively, no finer gift than a pair of these gloves. Velvety-soft, rich looking suede leather, carefully tanned to keep that softness. Smartly styled for distinctive appearance; accurately cut for comfortable fit. Strongly stitched to resist ripping. Self hemmed top. Choice of slip-on or snap style. Unlined.  
Color gray only. Sizes 8, 8½, 9, 9½, 10, 10½. Please state size. Shipping weight pair 5 ounces.  
33 N 2421—Slip-on style  
33 N 2420—Snap style . . . Pair \$3.50

**B** South African capeskin . . . 2 styles. Select leathers treated with the finest tanning to make them super-soft and pliable, then crafted into handsome gloves. Pattern cut to fit smoothly. Whipstitched. Unlined. Shipping weight pair 5 ounces.  
Colors black, brown, tan. Sizes 8, 8½, 9, 9½, 10, 10½. Please state size, color.  
33 N 2442—Slip-on style  
33 N 2443—Snap style . . . Pair \$3.95  
Cadet (for hand with shorter fingers) sizes in slip-on style only. Sizes 7½, 8, 8½, 9, 9½. Color, wt. as above.  
33 N 2444—State size, color. Pair \$3.95

**C** Horsehide; lambskin lining . . . an unbeatable combination for wear, warmth. Tough as only horsehide can be, tanned by a special process that makes the leather pliable, butter-soft. Thick, oven-warm baby lambskin lining keeps out cold as no other lining can. Smartly styled sidewall construction for finger freedom. Strongly stitched seams. Neatly stitched backs. Shipping weight pair 8 oz.  
Color black only. Sizes small (8-8½); medium (9-9½); large (10-10½). Please state size.  
33 N 2656—Slip-on style. Pair \$5.39

**D** Imported pigskins, aristocrat of all dress gloves for the man who wants the best. Critically selected leathers are velvety soft and supple, highlighted by distinctive peccary (wild pig) markings. Pattern cut for true fit. Hand stitched hem. Unlined.  
Color cork (Med. tan). Sizes 8, 8½, 9, 9½, 10, 10½. Shpg. wt. pair 5 oz.  
33 N 2445—Slip-on style. State size.  
33 N 2446—Snap style . . . Pair \$5.95  
Cadet (for hand with shorter fingers) sizes in slip-on style only. Sizes 7½, 8, 8½, 9, 9½. Color wt. as above.  
33 N 2447—State size . . . Pair \$5.95



**Wool knits, soft leathers**

**E** Virgin wool knit gloves . . . warm, colorful and comfortable. Novelty knit with attractive contrasting pattern. Seamless. Snug ribbed wrists. Shipping weight pair 6 oz. Please state size, color.  
Colors maroon (navy, maize (yellow) medium tan.  
33 N 2807—Sizes med. (9-9½); large (10-10½). \$1.45 Pair

**F** Domestic capeskin, pig-grained slip-ons. Low in price but packed with wear, looks soft, pliable, carefully cut; strongly stitched. Unlined.  
Colors black, brown, tan. Sizes 8, 8½, 9, 9½, 10, 10½.  
33 N 2426—State size and color. Shpg. wt. pair 5 ounces. \$1.95 Pair

**G** Domestic capeskin, lined; strap wrist style. Warm knit lining, 50% wool, 50% cotton.  
Colors brown, black. Sizes small (8-8½); medium (9-9½); large (10-10½). Shipping wt. pair 6 oz. Please be sure to state size and color.  
33 N 2564—Slip-on style with strap adjustment on wrist. \$2.79 Pair



# Men's Gold Bond Slippers

..leather, felt, shearling

"when the happy day is done  
work is over, rest is won."



### Warm as the Spirit of Christmas

You give him deep-down, lasting comfort when you give him these Gold Bond slippers. They're so good looking he'll be proud to wear them when friends drop in, and so luxuriously comfortable he won't want to take them off. Supple brown leather uppers, fully lined with thick, warm shearling. Popular center-seam opera style. Long-wearing, flexible, smooth leather sole, rubber heel. • Men's full sizes 6, 7, 8, 9, 10, 11, 12, 13. No half sizes. Wide width. *Please state size.* Shipping weight 1 pound 8 ounces. 67 N 5774—Brown leather, shearling lined.....Pair \$3.98

**Gold Bond**  
THE RIGHT WAY  
TO SAY  
**MEN'S SHOES**



#### Snug zip-boot

Zips up to give smooth fit, to help hold in extra warmth. Soft, pliant tan leather uppers, lined with soft, warm shearling. Fine leather sole, rubber heel. He'll like their fine quality.

• Men's full sizes 7, 8, 9, 10, 11, 12. No half sizes. Wide width. *State size.* Shpg. wt. 1 lb. 10 oz. 67 N 5776—Tan leather Pair.....\$4.45

#### Pig-grained leather

Handsome pig-grained leather uppers... tough, pliant. Lined with thick sheep shearling for luxurious comfort. Durable leather sole and rubber heel. Gold Bond quality.

• Men's full sizes 6, 7, 8, 9, 10, 11, 12. No half sizes. Wide. *State size.* Shpg. wt. 1 lb. 8 oz. 67 N 5777—Tan leather Pair.....\$3.98

#### Cushion sole

Like walking on a down comfort: flexible as your foot, warm as a wool blanket. Soft sponge rubber platform, leather sole. Tan wool blanket-cloth uppers.

• Men's sizes 6, 6½, 7, 7½, 8, 8½, 9, 9½, 10. Wide width. *State size.* Shpg. wt. 14 oz. 67 N 5801—Tan wool. Pair.....\$1.98

#### Luxurious comfort

Keeps feet snug and warm on coldest mornings. Soft, thick shearling lining; crushed brown leather uppers. Shearling cuff turns up. Leather sole, rubber heel. *State size.*

• Men's full sizes 6, 7, 8, 9, 10, 11, 12. No half sizes. Wide width. Shpg. wt. 1 lb. 10 oz. 67 N 5775—Brown Pair.....\$4.25

#### Snug Shearling

Electrified shearling uppers... thick, warm, extra soft... in a deep, rich wine (dark red) color. Shearling lined insole; padded leather sole and heel.

• Men's full sizes 6, 7, 8, 9, 10, 11. No half sizes. Wide width. *State size.* Shipping weight 1 pound 8 ounces. 67 N 5753—Dark red Pair.....\$3.79



**HOW TO ORDER**

Order slippers on these two pages same size as your regular shoes. If slipper comes in whole sizes only and you wear a half size shoe order as follows:  
 For C, D, E or wider shoes order half size larger.  
 For AA, A or B width, order half size smaller than regular shoes. You'll find it's easy to get a perfect fitting at Sears.

**Fine Brown leather**

Two wide widths. Smooth brown leather uppers, leather lined. Tough, flexible leather sole, rubber heel.  
 • Men's E (wide) sizes 6, 6½, 7, 7½, 8, 8½, 9, 9½, 10, 10½, 11, 12. EEE (triple wide) sizes 7, 7½, 8, 8½, 9, 9½, 10, 10½, 11. State size, width. Shipping wt. 1 lb. 8 oz.  
 67 N 5726—Brown  
 Pair.....\$4.85

**For easy comfort**

Dress opera style in glove-soft brown leather, lined with leather. Tough, flexible leather sole, rubber heel. Put a pair under the tree for him, he's sure to like them.  
 • Men's wide width. Sizes 7, 7½, 8, 8½, 9, 9½, 10, 10½, 11. Please state size. Shipping weight 1 pound 8 ounces.  
 67 N 5725—Brown  
 Pair.....\$3.98

**Brown leather**

Men appreciate this quality. Handsome everett with uppers of soft brown leather, with good looking black underlay design on vamp. Leather sole stitched to upper, rubber heel.  
 • Men's wide sizes 6, 6½, 7, 7½, 8, 8½, 9, 9½, 10, 10½, 11. Please state size. Shipping weight 1 lb. 8 oz.  
 67 N 5736—Brown  
 Pair.....\$2.89

**Always popular**

Brown or black soft leather romeos with a broad, roomy last. A long-time favorite. Leather sole, rubber heel.  
 • Men's wide sizes 6, 6½, 7, 7½, 8, 8½, 9, 9½, 10, 10½, 11, 12, 13. Please state size. Shipping weight 1 lb. 8 oz.  
 67 N 5721—Brown  
 Pair.....\$3.79  
 67 N 5722—Black  
 Pair..... 3.79



**Comfort bargain**

Tan imitation leather upper. Leather sole and rubber heel for long wear. Here is solid comfort at a modest price for Christmas giving.  
 • Men's wide sizes 6, 6½, 7, 7½, 8, 8½, 9, 9½, 10, 10½, 11, 12, 13. Please state size. Shipping weight 1 pound 8 ounces.  
 67 N 5914—Tan  
 Pair.....\$1.79

**Men's brown kid**

Uppers of brown kid leather. Soft, padded leather sole and heel. Checked cloth lining. Surprise him with their luxurious comfort and handsome appearance this Christmas.  
 • Men's wide width sizes 6, 7, 8, 9, 10, 11. No half sizes. State size. Shpg. wt. 1 lb. 8 oz.  
 67 N 5707—Brown  
 Pair.....\$2.69

**Moc-style felt**

An exceptionally warm, comfortable slipper with soft padded sole and heel. Upper made of thick brown felt. A pair will bring a smile to him on Christmas morn.  
 • Men's wide width sizes 6, 7, 8, 9, 10, 11, 12. No half sizes. State size. Shpg. wt. 1 lb. 6 oz.  
 67 N 5805—Brown  
 Pair.....\$1.89

**Handsome Felt**

Warm, comfortable felt with a pillow-soft platform and wedge heel. Built-up front, smooth fitting. So easy on feet he'll want to wear them all day!  
 • Men's wide sizes 6, 7, 8, 9, 10, 11. No half sizes. Please state size. Shipping weight 1 pound 6 ounces.  
 67 N 5808—Burgundy (dk. red).....Pair \$1.98

**Two-tone style**

This two-tone moc-style has a brown and tan suede leather upper, soft padded sole and heel. Warmly lined. A gift he'll thoroughly enjoy.  
 • Men's wide width in sizes 6, 7, 8, 9, 10, 11, 12. No half sizes. Please state size. Shipping weight 1 pound 8 ounces.  
 67 N 5706—Brown, tan.  
 Pair.....\$1.98

Due to slight variations, the fiber content of wool or felt slippers is not stated in the catalog; it is marked plainly on the merchandise as required by the Wool Products Labeling Act.



**G** \$7.45

**H** \$5.95

**F** \$7.95

Give him handsome casuals . . .  
He'll use them all year 'round



**J** \$5.50

**F** The Moc-a-strap . . . vamp and toe seams are "lariatstitched" by hand. Adjustable strap gives smooth, snug fit. Deep rich "maroon mahogany" leather. Goodyear welt construction, leather sole and heel.

• D (med. wide) sizes 6½, 7, 7½, 8, 8½, 9, 9½, 10, 10½. *State size.* Shpg. wt. 2 lbs. 8 oz. 67 N 4510—Maroon mahogany. Pair \$7.95

**G** Hand Sewn Vamp gives these rugged casuals a distinctive look that can't be matched by machine. Rich, mellow, "maroon mahogany" leather uppers. Goodyear welt . . . leather sole and heel.

• D (med. wide) sizes 6½, 7, 7½, 8, 8½, 9, 9½, 10, 10½. *State size.* Shpg. wt. 2 lbs. 8 oz. 67 N 4509—Maroon mahogany. Pair. \$7.45

**H** Saddle Brown leather; soft, rich, supple. Elastic side gores . . . foot-hugging, yet gentle-fitting. Handsome plain toe style; cushioning leather-covered platform. Leather sole and rubber heel lift.

• D (med. wide) sizes 6, 6½, 7, 7½, 8, 8½, 9, 9½, 10, 10½, 11. *State size.* Shpg. wt. 2 lbs. 10 oz. 67 N 4428—Brown leather . . . Pair \$5.95



**J** Fine Quality Moc-Style Casual. Solidly built for outdoor use, right for all informal wear. Rich brown leather uppers, top-quality dress shoe construction: Goodyear welt, leather insole, leather sole and heel. Roomy wall toe.

• D (med. wide) 6, 6½, 7, 7½, 8, 8½, 9, 9½, 10, 10½, 11. *State size.* Shpg. wt. 2 lbs. 8 oz. 67 N 4208—Brown . . . Pair \$5.50

**Low-Priced Good Quality Moc-Style.** Same styling as casual described at left, but with less detailing. Good quality brown leather uppers, smooth insole, tough brown non-marking rubber sole and heel. A gift he'll enjoy the year 'round.

• D (med. wide) sizes 6, 6½, 7, 7½, 8, 8½, 9, 9½, 10, 10½, 11, 12. *State size.* Shpg. wt. 1 lb. 14 oz. 67 N 4351—Brown leather. Pr. \$3.98

**K** Genuine Moccasins . . . hand sewn vamp. A "true" moc: no seam at the sole; a single piece of leather around and under your foot. Supple, oil enriched top-grade leather, with leather drawstring. Tough, non-marking brown rubber sole, arch-supporting rubber extension heel. They're useful as slippers, as casuals, for camp and sports, for general wear, too.

• Men's full sizes 6, 7, 8, 9, 10, 11. No half sizes. Wide width. *Please state size.* Shpg. wt. 2 lbs. 2 oz. 67 N 4077—Dark brown. Pr. \$3.79

**L** Moc-style Campers . . . tough as rawhide: roomy, flexible. Wear them as slippers, for camping, work around the house; for all off-duty hours. Pliant brown leather uppers, moc-style toe. Adjustable leather drawstring for smooth fit. Non-marking brown rubber heel and sole out-wear leather by far. Heel extension gives added support at the arch.

• Men's full sizes 6, 7, 8, 9, 10, 11. No half sizes. Wide width. *Please state size.* Shipping weight 2 pounds. 67 N 4090—Brown leather . . . . . Pair \$2.49

**L** \$2.49

**K** \$3.79



**J. C. Higgins Bolt Action  
6-shot Repeating Shotgun**

**\$24.95** Cash  
\$2.50 down  
Solid walnut stock with rubber recoil pad. Gun loads under bolt, holds 5 shells in magazine, 1 in chamber. Non-glare metal bead front sight. 1-screw takedown. Lengths: 12 ga., 48 in.; 16 and 20 ga., 46 in. Actual weights: 12-ga. about 7½ lbs.; 16-ga. 7¼ lbs.; 20-ga. 7 lbs. Shipping weight each 9 pounds. (Scope sold at right.)

6 N 057—12-ga. Full choke.	28-in. barrel . . .	\$24.95
6 N 098—12-ga. Modified choke.	28-in. barrel . . .	24.95
6 N 099—16-ga. Full choke.	26-in. barrel . . .	24.95
6 N 025—16-ga. Modified choke.	26-in. barrel . . .	24.95
6 N 096—20-ga. Full choke.	26-in. barrel . . .	24.95
6 N 095—20-ga. Modified choke.	26-in. barrel . . .	24.95

*Firearms not sold to minors*



**New Crosman Air Pistol**

Enjoy the sport of target shooting without using expensive shells. Single shot pistol shoots lead pellets. Accurate up to 50 ft. Pump lever under barrel builds up air pressure to desired power; 5 pumps penetrates ¼-in. soft pine at 50 ft. No smoke, fumes or recoil. 11½ in. long. Actual wt. about 2 lbs.

6 N 277—Shpg. wt. 2 lbs. 5 oz. . . .	\$19.80
6 N 305—Box of 500 pellets. Shipping weight 11 oz. . . . .	\$1.98

**J. C. Higgins 4-power Scope**

J. C. Higgins design; built by Weaver. Achromatic lens for precision shooting. Internal windage, elevation adjustments. Cross hair reticule allows "squirrel's eye" accuracy. 30-ft. field of view at 100 yards. Eye relief 2 in. Length 11¼ in. Wt. with bracket type mount 10¼ oz. Mount included. For .22 rifles only. Shipping weight 1 lb.

6 N 663—State rifle model, make . . .	\$9.29
---------------------------------------	--------



**J. C. Higgins cold weather Hunting Clothes**

**Deluxe Hunting Coat.** Game pocket has bloodproof lining. Zippers at each end allow pocket to drop down for leg protection or use as seat. Hook fasteners hold pocket up. Outside entrances to game pocket on both sides. Flap breast pocket. 2 large utility front pockets. Water-repellent 10.10-oz. army duck. Corduroy collar, cuff facings. Lined with heavy drill. Bi-swing back. 30½ in. long. Chest sizes 36, 38, 40, 42, 44, 46 in. State size. Mustard color. Shipping weight 4 lbs. 6 oz.

6 N 8423 . . . . .	\$9.45
--------------------	--------

**Down Filled Jacket.** Repels coldest weather. Sand colored cotton poplin, rayon satin lining, filled with soft down from northern waterfowl. Tailored for arm, shoulder freedom. Zipper front, wool knit inner wristlets. Treated to resist water, wind. Fingertip length. Sizes 38, 40, 42, 44, 46, 48, 50 in.

6 N 8453—Shpg. wt. 2 lbs. 12 oz. State chest size . . . . .	\$36.95
---	---------

**Note.** How to Measure: Measure fullest part of chest over similar amount of clothing worn hunting.



**Give him a Gun Case to protect his shotgun and rifle**

**Low-priced Canvas Case.** Long-wearing, full length model. Strong olive drab canvas with leather trim. Luggage type carrying handle. Cotton lined. Sizes small 38-42 in.; medium 44-46 in.; large 48-52 in. State size.

6 N 742—Shpg. wt. 12 oz. . . . .	\$2.89
----------------------------------	--------

**Leg O'Mutton Case.** Brown duck treated with vinyl plastic. Resembles leather. Water-repellent. Cotton flannel lining. State length of gun barrel.

6 N 0731—Fits automatics, Remingtons 17, 29, 31. Shpg. wt. 6 lbs. 10 oz. . . .	\$9.95
6 N 0730—For singles, doubles, pumps. Shpg. wt. 6 lbs. 10 oz. . . . .	\$9.95



**Here are Knives . . Wool Socks . . Boots . . Camping Jugs and Stoves—things every sportsman wants for Christmas**

**E** 3¼-in. Blade about ½ in. at widest point. Aluminum knob end. Leather ring handle.  
6 N 689—Shpg. wt. 8 oz. . . . \$1.69

**F** 5-inch Blade about ¾ inch at widest part. Plastic handle, pearl colored composition sides.  
6 N 693—Shpg. wt. 10 oz. \$2.79

**G** Tropper's Knife. 2¾-in. blades.  
6 N 729—Shpg. wt. 6 oz. \$1.98

**H** Pre-shrunk Wool Socks. Treated so they won't shrink more than 3%. Seamless; reinforced heel and toe. Fleeced inside. Rib knit ankle. Gray leg. Red top, white foot. State size 10, 11, 12. Shipping weight pair 12 oz.  
6 N 2053—14-in. lgth. \$1.19  
6 N 2054—20-in. lgth. 1.29

**J** 15-inch brown Rubber Huntboots. Waterproof. Crepe sole, heel. Foam rubber insole. Even sizes 6 to 12. Shpg. wt. 3 lbs. 2 oz.  
6 N 6207—State size. Pr. \$6.85

**K** 12-in. Field Boot. Cowhide uppers, rubber foot. Crepe sole, heel. Sizes above. Shpg. wt. 3 lbs. 14 oz. State size.  
6 N 6208—Brown . . . \$8.85

**L** Easy-pour Gallon Jug. Metal liner; Zero-cel insulation keeps liquids warm 4 hrs., cold 8 hrs. Steel construction; blue enamel finish. Shpg. wt. 5 lbs.  
6 N 07363 . . . . . \$3.25

**M** As above. Brass spigot bottom instead of spout. Shpg. wt. 6 lbs.  
6 N 07307 . . . . . \$3.98

• Steel leakproof fuel tank  
• Burns unleaded gasoline

**P** Deluxe 3-Burner Stove. Holds 3¾ pints fuel. Folds to 27x12x5¾ in. Shpg. wt. 24 lbs.  
6 N 07219 . . . . . \$13.49

**N** 2-Burner Stove. 2¾ pints cap. Folds to 21¼x12x5¾ in. Shpg. wt. 17 lbs.  
6 N 07218 . . . . . \$10.39



A \$1.79  
Rayon Lace  
Mantilla

B \$2.95  
Rayon Scarf  
with Sequins



C \$1.79  
Spun Rayon  
Challa

*Flattering Scarfs  
for every woman*

"here we come a-caroling . .  
here we come a-wandering .  
so fair to be seen."



D \$2.95  
Pure Silk  
Square



E \$1.95  
Pure Silk  
Scarf



F \$1.29  
All Wool  
Plaid Square

## Match your Gift-Scarf to her personality

She'll like the feeling that you chose it just for her

Scarves shown on opposite page

**A** For a Glamorous Lady, a romantic rayon lace mantilla with glittering sequin accent. She'll love swirling it around her head and shoulders when she dresses up. It's big enough to drape effectively, about 22x54 inches. It will be one of her highly prized gifts . . . she'll wear it for many seasons to come. Dry clean. Shipping weight 5 ounces.

88 N 4550—Black, gold color sequins. \$1.79

**B** For Someone Very Smart, you won't find a grander gift than this stunning rayon scarf with its hand sewn sequin bowknot design. She'll like its easy-to-loop size and tubular shape . . . and the clever way the sequins are placed to brighten up the neckline of her coat or suit. Dry clean. Size about 11x45 in. Shpg. wt. 6 oz.

88 N 4677—White with sequins. . . . \$2.95

88 N 4678—Black with sequins. . . . 2.95

**C** For the Casual Type, here's the perfect gift! It's that perennial favorite . . . spun rayon challis . . . with a gay riot of bright flowers blooming all over its white surface. She'll wear it on her head . . . or as a scarf . . . and love every bright inch of it. Its many colors will harmonize with all her clothes. Hand wash. Size about 35 inches square. Shipping weight 5 oz.

88 N 4545—White background . . . \$1.79

**D** If She Loves Luxury, she'll be thrilled when she unwraps this colorful pure silk square . . . she'll revel in the caressing feeling of pure silk after so many years without it. It's a wonderful gift at much less than you'd expect to pay for silk of this exquisite quality. Size about 35 inches square. Hand wash. Shpg. wt. 3 oz.

88 N 4673—Red. . . . \$2.95

88 N 4674—Royal (bright) blue. . . . 2.95

88 N 4675—Dark brown. . . . 2.95

**E** For a Practical Lady. She'll be happy with a long scarf . . . especially if it's heavenly pure silk in this flattering floral pattern. It's just the bright touch she likes to smarten up her winter coat; she'll love the feel of the fine silk against her throat. Size about 16½x44 in. Hand wash. Shipping weight 3 oz.

88 N 4684—Green. . . . \$1.95

88 N 4685—Red. . . . 1.95

88 N 4686—Medium blue. . . . 1.95

**F** For the Young and Gay, this exciting all wool plaid square is the answer to "what to give." The wool is fine and soft; the colors are smart and new . . . it's a gift in a million at a very gift-wise price. Teens especially will go for its swanky good looks. Hand washable. Size about 33 inches square. Shipping wt. 5 oz.

88 N 4681—Red and blue plaid. . . . \$1.29

88 N 4682—Brown and tan plaid. . . . 1.29

Scarves make perfect Christmas gifts; add several to your Easy Terms order. See page 256. It's easier to Christmas-shop when you do it the convenient Sears way.



### A Scarf with her Monogram

The gift with a personal touch

Each scarf with three graceful initials . . . just press them on

#### Rayon Scarf with 3 Initials

98¢

She'll know you thought just of her when you give her this really personalized gift! Tubular rayon scarf. Size about 9½x41 in. With three easy-to-press-on initials. Please state letters wanted. Dry clean. Shpg. wt. 4 oz.

88 N 4676—White with 3 black press-on initials. . . . 98¢

#### Spun Rayon Square with 3 Initials

98¢

Newest headline idea . . . a square with her own monogram. Teens love it; so will any woman on your gift list. Spun rayon. Size about 30 in. square . . . press the initials on in a jiffy. State letters wanted. Dry clean. Shpg. wt. 6 oz.

88 N 4683—White with 3 black press-on initials . . . 98¢



#### Happy Thought! A Wool Square

\$1.95

In pretty gift-right colors

100% zephyr wool square . . . nothing can take its place in her cold weather wardrobe. Size about 36 in. square . . . big and beautiful. Hand washable. Shpg. wt. 5 oz.

88 N 4669—White

88 N 4670—Yellow

88 N 4671—Medium blue

Each . . . \$1.95



#### For your favorite "Fine Lady"

\$1.95

A luxurious white rayon jacquard scarf

Make her feel elegant; she's bound to if you give her this handsome scarf in glistening white jacquard rayon. It has a high-fashion look but it's very practical; can be hand washed easily. Size about 21x46 in.

88 N 4680—White. Shipping weight 5 ounces. . . . \$1.95

# Royal Purple Hosiery

.. nylon, silk, rayon

"... and let us say that Christmas day is still the best day of the year."



For her most "special" occasions

## Royal Purple Sheerest Nylons

in the season's newest, dramatic colors

Fashion dips her brush and comes up with new exciting colors for the gay holiday season. . . colors in deep vibrant tones to accent the sheeress of the hosiery, to enhance the curves of lovely legs. Three dramatic Royal Purple shades.



### Black Beauty

Picture a filmy off black veil with a subtle fawny cast . . . m-m-m, sheer witchery!

### Mistique

Alluring, flattering combination of deep autumn taupe with a hazy tan overcast.

### Sunnibrown

Warm, rich beige-brown, considerably darker than the early fall shades you've seen

Pair **\$139** 2 prs. \$2.70

Pair **\$155** 2 prs. \$3.00

### No-seam Sheers

Extravagantly sheer, young, exciting! Strictly "dream stuff" as gifts for that special O.A.O. (one and only). So sheer, in fact, are these no-seam (bareleg) nylons that they have to be made in darker shades to be visible on the leg at all.

Despite their fragile, misty sheer appearance, they'll wear . . . they're very finely knit in a high gauge and they're all nylon. Reinforced heel, toe, top.

Colors mistique, sunnibrown. Sizes 9, 9½, 10, 10½. State size, color. Shipping weight pair 2 ounces.

86 N 809 . . . . . Pair \$1.39  
2 prs. \$2.70

### Full fashioned Sheers

Thrill her with the gift of glamour . . . exquisitely sheer full fashioned nylons for her most important "dates". Their transparent sheeress, their new darker colors will mold her legs in loveliness. Full fashioning assures perfect wrinkle-free fit.

All, all precious nylon from top to toe . . . knit in a very high gauge to impart that satin-smooth appearance, to wear. Reinforced heels, toes, tops. Slim seams. Shpg. wt. pr. 2 oz.

Colors black beauty, mistique, sunnibrown. Sizes 8½, 9, 9½, 10, 10½. State size, color.

86 N 999 . . . . . Pair \$1.55  
2 prs. \$3.00

### Gift tip to men

Smartest women buy two or three pairs of stockings in the same style, the same shade for greatest economy. And what a luxurious gift 3 pairs make!



Full fashioned nylon sheers illustrated

**Royal Purple**  
THE RIGHT WAY TO SAY  
**WOMEN'S HOSIERY**



Lovely Silks  
in regular  
and outsizes

Rich dull Rayons  
Full fashioned  
for flattering fit

Thrift priced Rayons  
Two smart styles  
Regular and outsizes

For dressy, daytime occasions

**Royal Purple  
Pure Silk Midweights**

Full fashioned to fit her perfectly

For the women on your gift list who appreciate the dull, skin concealing beauty, the resilient comfort, the durability of pure silk midweight hosiery. Finely knit of snag resisting, "high twisted" yarns. Sized correctly for fit without strain. Cotton tops and reinforced feet. Neat even seams in back. Shpg. wt. pair 3 oz.

Colors beigetones, taupetones. Regular sizes 8½, 9, 9½, 10, 10½. Please be sure to state size and color.

86N645.....Pair \$1.35 2 pairs \$2.60

Pair  
**\$1.35**

2 prs. \$2.60

For the larger woman . . . Pure Silk Outsizes



Knit (not stretched) to full sizes, wider and longer to fit heavier legs, thighs. Durable, comfortable. Pair \$1.55 2 prs. \$3.00

Same fine, first quality Royal Purple pure silk midweights as above, with the same dull, rich beauty, comfort and wearability. Cotton tops; reinforced feet. Shpg. wt. pair 3 oz.

Colors beigetones, taupetones. Outsizes 9½, 10, 10½, 11. 86N536-Please be sure to state size and color. Pr. \$1.55 2 prs. \$3.00

Pair  
**\$1.55**

2 prs. \$3.00

For beauty, thrift

**Royal Purple  
Rayon Sheers**

Full fashioned

Your gift hosiery need not be expensive to make a fine impression. These rayon sheers, look much more costly than our low price because they're so carefully knit in a practical, semi-sheer weight that stands up under daily wear. Yarns are "high twisted" for snag resistance, elasticity, dull luster. Full fashioning molds them to the legs for flattering fit. Backs are evenly seamed. Cotton feet, rayon tops. Shipping weight pair 3 ounces.

Colors beigetones, suntones, white. Sizes 8½, 9, 9½, 10, 10½. Please state size and color. 86N501-Pr. 69c 3 prs. \$2.00

Pair  
**69c**

3 prs. \$2.00

For economical daytime wear

**Royal Purple  
Budget priced Rayons**

No-seam Sheers

Thrift priced gift hose in youthful "bare-leg" style... sheer, smooth, finely knit rayon. Mercerized cotton heels, toes.

Colors beigetones, suntones. Sizes 8½, 9, 9½, 10, 10½. State size and color. Shipping weight pair 3 ounces. 86N420-Pr. 39c 3 prs. \$1.10

Pair  
**39c**

3 prs. \$1.10

Seamed back Sheers

Look expensive with their neat seams. Same sheerness as no-seam at left. Mercerized cotton heels, toes. Double rayon top. Seamless sole for comfort.

Colors beigetones, suntones. Sizes 8½, 9, 9½, 10, 10½. State size, color. Shpg. wt. pair 3 oz. 86N425-Pr. 39c 3 prs. \$1.10

Pair  
**39c**

3 prs. \$1.10

Seamed back Outsize Rayons . . . sturdy midweight



Lowest priced, but still knit (not stretched) to full outsize proportions. Comfortable, long wearing. Pair 49c 2 prs. 94c

Clear and ringfree. Cotton tops, heels and toes. No seam soles. Colors beigetones, taupetones. Sizes 9½, 10, 10½, 11. State size, color. 86N430-Shipping weight pair 3 ounces. . . Pair 49c 2 prs. 94c

Pair  
**49c**

2 prs. 94c



*Kerrybrooke Handbags  
in sturdy goatskin*

"follow me in merry measure,  
while I tell of Christmas treasure."



## KERRYBROOKE CLASSICS ARE ALWAYS WONDERFUL GIFTS

Especially this year when you want the fullest value for your money. It's wonderful to know that when you buy her a Kerrybrooke, you are paying less than you'd expect for bags of such high quality. Whichever price Kerrybrooke you choose, there is no deviation in quality; only details are different.

**Kerrybrookes** are smart gifts . . .  
their classic lines are always in fashion

**Kerrybrookes** are practical gifts . . .  
the sturdy goatskin will wear and wear

**Kerrybrookes** are useful gifts . . .  
they have spacious pockets, zippers

**Kerrybrookes** are thoughtful gifts . . .  
the kind of bag she'd choose herself

**Kerrybrooke**

THE RIGHT WAY  
TO SAY  
WOMEN'S  
ACCESSORIES

INITIALS, gold color metal. Size 1 3/8 in. All letters except "X". Shpg. wt. ea. 1 oz. 88 N 1012—Each 29c . . 3 for 84c

### Twin-Zip Top-Handler \$7.00

Tax included

A good classic bag is the perfect gift for any woman, and Kerrybrookes are good. This one, with its two zip pockets and big side pockets is typical of Kerrybrooke roominess and good looks. Of durable goatskin; the corded front adds softness. Rayon lined with covered coin purse, mirror. Size about 12 1/2 x 8 in. Shpg. wt. 1 lb. 2 oz. Initials sold separately. Price includes 20% Federal Excise Tax.

88 N 1040E—Black . . . . . \$7.00  
88 N 1041E—Brown . . . . . 7.00





This year's cleverest gift!

The gay Umbrella Bag

\$6.50 Tax included

Let It Rain; she won't mind if you give her this weather-wise underarm bag with its own umbrella. When it showers, she can zip open the side compartment, slip out the gay rayon plaid 10-rib umbrella. The bag is of calf-like plastic with covered frame; rayon lining; mirror. Plastic lined umbrella compartment to keep her belongings dry. Size about 18½x8½ in. Price includes 67c Federal Excise Tax on bag only. Shpg. wt. 1 lb. 13 oz.

88 N 620 E—Black with plaid umbrella . . . . . \$6.50  
88 N 621 E—Brown with plaid umbrella . . . . . 6.50

She shall have  
glamour wherever she  
goes with her elegant  
new fitted Bag

**Top-handler with Fittings** 20% Fed. Ex-  
cise Tax incl. **\$5.89**

**A** Metal compact, comb and frame coin purse in a calf-like plastic bag—can you imagine a gift that would please her more? It's just like Sears to take such bags out of the luxury class so that every woman can enjoy them. The bag is beautifully quilted with a metal frame and double top handle. It opens wide to show the elegant fittings, the rayon lining, the pockets with gold color piping. Size abt. 8x8 in. Shpg. wt. 1 lb. 11 oz.

88 N 622 E—Brown . . . . . \$5.89  
88 N 623 E—Black . . . . . 5.89

**Fitted Top-handle Bag** 20% Fed. Ex-  
cise Tax incl. **\$3.53**

**B** French purse and mirror, extra dividends she'll enjoy having in a rayon lined calf-like plastic bag that is brought to you by Sears at a timely gift-low price. The useful little rayon lined French purse is of calf-like plastic to match the bag; it has a frame purse for coins, and opens flat into a zip-top wallet to hold bills. The bag zips at the top; has the double top-handle every woman likes; is smartly tucked in front. Size about 11x7½ inches. Shipping weight 11 ounces.

88 N 624 E—Brown . . . . . \$3.53  
88 N 625 E—Black . . . . . 3.53

**Suede Bag with Fittings** 20% Fed. Ex-  
cise Tax incl. **\$8.94**

**C** Lovely compact, comb and frame coin purse, all tucked into a dressy genuine suede bag—designed to make her happy on Christmas morning. The bag is luxurious inside and out . . . it's so beautifully made with a double top handle and gold color metal frame. With the accessories, it's the gift-buy of the season. She'll love to show off the smart round compact, the dainty comb. Rayon lined with gold color piping on pockets. Size about 10 x 9¼ inches. Shipping weight 1 pound 1 ounce.

88 N 626 E—Brown . . . . . \$8.94  
88 N 627 E—Black . . . . . 8.94

Prices of all handbags shown on this page include 20% Federal Excise Tax. Handbags make smart gifts; select just the right one for each woman on your gift list and add it to your Easy Terms order. See page 256 for details.



# Women's Kerrybrooke Sweaters

"Christmas bells are joyous ringing  
Christmas time is come again."



Gay! Exciting! New-as-next-year

## COLORS

here right now!  
In four "good forever"  
Sweater styles



### Casual! The long 'n' boxy classics

**A** Cardigans. Smart long sleeves. Grosgrain button band inside. 2 qualities. State bust size 34, 36, 38, 40 inches. Shpg. wt. 15 oz. Hand washable.

Our Fine Quality. Described right. 38N7388—White 38N7321—Aqua blue 38N7381—Gray 38N7380—Cherry rose 38N7320—Orchid 38N7382—Yellow **\$3.98**

Our Finest. Described at right. 38N7253—White 38N7304—Black 38N7350—Lady (lt.) blue 38N7353—Lady (lt.) pink 38N7354—Yellow **\$5.98**

**B** Pullovers. Comfortable, casual young style . . . her long-time favorite with skirts and sportswear. "Push up or wear long" sleeves. In 2 qualities. State bust size 34, 36, 38, 40 inches. Shpg. wt. 14 oz. Hand washable.

Our Fine Quality. Described right. 38N7233—Baby blue 38N7377—Baby pink 38N7379—Aqua blue 38N7234—White 38N7378—Orchid 38N7376—Yellow **\$3.50**

Our Finest Quality. Described at right. 38N7347—Sunny yellow 38N7249—White 38N7300—Lady (lt.) pink 38N7346—Lady (lt.) blue **\$4.98**

### Trim, smart! The fitted classics

**C** Pullovers. Fine quality, described at right. Cute short sleeves. State bust size 32, 34, 36, 38, 40 in. Shpg. wt. 12 oz. Hand wash. **\$2.79**

38N7225—Baby (pale) blue 38N7226—Orchid 38N7244—Light aqua blue 38N7245—White 38N7246—Baby (pale) pink 38N7247—Sunny yellow. . . Ea. **\$2.79**

**D** Cardigans. Fine quality, described at right. Makes beautiful sweater set with pullover (C). Grosgrain button band inside. State bust size 34, 36, 38, 40 inches. Shpg. wt. 14 oz. Hand washable. **\$3.98**

38N7258—Light gray 38N7259—Navy blue 38N7261—Chocolate brown 38N7262—White 38N7283—Baby (pale) pink 38N7284—Light aqua blue. Ea. **\$3.98**

### Kerrybrooke Fine Quality

- ✓ Made of 100% virgin Zephyr wool . . . soft, resilient yarns firmly knit to wear and wash well. You couldn't find a lovelier quality at this price!
  - ✓ Expert styling . . . looped crew neckline retains its shape nicely . . . rib knit bottom and sleeve cuffs stay close-fitting through plenty of wear
  - ✓ Neatly finished. Cardigan styles have strong, attractive pearl buttons
- Measure around fullest part of bust. Order bust size nearest measurement taken. If loose fit is desired, order the next larger bust size.

### Kerrybrooke Finest Quality

- ✓ 100% virgin Zephyr wool! Feather-light yarns, pre-washed to fluffy richness. Beautifully knit for fine texture that's soft to your skin
- ✓ Hand looped crew neckline . . . specially made to hold its shape . . . always lies flat and smooth! Snug, rib knit bottom and sleeve cuffs
- ✓ Fashioned armholes . . . careful detailing that means more comfortable fit, extra easy action! Longer wear, too, because there's no pull or strain
- ✓ Quality-finished! Cardigans have lustrous fresh-water pearl buttons

# Lacy Slips, Trimmed Underwear

"he promised me he'd buy me  
a beautiful fairing, a gay bit  
of lace the lassies are wearing."



She has always wanted  
luxury Slips like these  
.. dainty, lovely, lacy  
.. in new longer lengths!



**A** Shadowy-sheer Cotton Lace \$2.98  
adds the glamour touch to soft  
multi-filament rayon crepe . . . real luxury at  
this modest price! Deep 2 $\frac{3}{4}$ -inch trim at V-  
neckline and hemline . . . basque bodice, fig-  
ure-molding bias cut skirt. Seams are double  
stitched, ripproof; double needle V-back.  
Adjustable straps. State bust size 32, 34, 36,  
38, 40 inches. Shpg. wt. 8 oz.  
38 N 3129—Tealrose 38 N 3130—White. Ea \$2.98

**B** Delicate Frills of Val-type cot- \$3.98  
ton lace in 3 dainty rows at  
basque bodice, 2 at hemline, and 1 across the  
straight back. Feminine styling by Josie  
Lingerie in famous Bur-mil rayon crepe . . .  
long-wearing fabric that feels so smooth, looks  
so lustrous. Bias cut skirt, double stitched  
rip-proof seams. Adjustable straps. State bust  
size 32, 34, 36, 38, 40 in. Shipping wt. 8 oz.  
38 N 3316—Pale pink 38 N 3317—White  
38 N 3318—Pale blue. . . . . Each \$3.98

**C** Bewitching Slit Skirt decorated \$4.29  
with shaped cotton lace . . .  
matching lace 3 $\frac{3}{4}$  inches deep on basque bod-  
ice and hemline. Soft multi-filament rayon  
crepe . . . double stitched ripproof seams.  
Slim bias cut skirt, double needle V-back.  
Adjustable straps. State bust size 32, 34, 36,  
38, 40 in. Shpg. wt. 8 oz.  
38 N 3321—Pink 38 N 3322—White. . Ea \$4.29

**D** The Slip she'll treasure most. \$5.89  
Splendor of luxurious cotton  
lace exquisitely fashions the entire front bod-  
ice . . . breath-taking under sheer blouses,  
gorgeous under any outfit. Matching lace  
godet inserts accent the molded, bias cut skirt  
. . . and narrow  $\frac{1}{2}$ -inch lace edges the neck-  
line, V-back and hemline. Rich multifilament  
rayon crepe fabric—so sleek and soft, breezy-  
cool for next-to-the-skin comfort. Expertly  
topstitched seams are ripproof. Adjustable  
straps. State bust size 32, 34, 36, 38, 40 in.  
Shpg. wt. 8 oz.  
38N3319—Pink 38N3320—Opaline (ivory) Ea. \$5.89

### SIZE SCALE! HOW TO MEASURE

Bust, inches . . . . .	32	34	36	38	40	42	44
Hip, inches . . . . .	35	37	39	41	43	45	47
Regular . . . . .	43	43 $\frac{1}{4}$	43 $\frac{1}{2}$	43 $\frac{3}{4}$	44	44 $\frac{1}{4}$	44 $\frac{1}{2}$

lengths in inches, including shoulder straps.

(All Sears Slips are made in proportioned lengths for each bust size and will fit the average height woman.)  
MEASURE FOR SLIPS around body, over the fullest part of the bust. Then measure hips. If hips measure more than 4 inches larger than bust, order the next larger bust size.

Slips on this page  
are hand washable  
See page 256 for  
Sears Easy Terms

Charmode

THE RIGHT WAY  
TO SAY

WOMEN'S  
INTIMATE  
APPAREL

Over 3 million women  
have bought them!  
Sure-to-please gifts  
... for yourself, too

## Tailored Classic Slips

For perfect fit! Junior sizes . . .  
Regular sizes in 3 lengths



Made to Charmode standards—  
all in the new longer lengths

- 4-gore V-back style won't twist or hang unevenly—it's cut on exact 45-degree bias—fits sleek and smooth as a "second skin"
- Double fabric yoke at front, back, and under arms. Double stitched seams at bodice
- Unpieced skirt bottoms. Neatly covered skirt seams make as clean a finish inside as out. Strong, double needle hems
- All seams are ripproof to add extra service! Firmly sewn adjustable shoulder straps

Junior Sizes \$1.98

Perfect gift for the woman with a petite junior figure . . . Classic Slips designed especially for her proportions . . . made in sizes exactly like junior dresses! Multi-filament rayon satin . . . rich, shimmering . . . closely woven so it drapes softly, feels smooth to touch. Hand wash. Shpg. wt. 8 oz. State size 9 (30-in. bust); 11 (31-in.); 13 (33-in.); 15 (35-in.). Lengths are proportioned from 41 to 43 inches  
38 N 3090—Tearose . . . . . \$1.98

Regular Sizes in 3 lengths \$2.79

**Multi-Filament Rayon Crepe.** Our superior quality fabric is made with many fibers to each yarn for extra softness and flexibility. Takes plenty of wash and wear . . . feels smooth to touch . . . looks fine-textured and luxurious. Shipping weight 8 ounces. Hand wash.

**Short.** (2 in. shorter than Regular Length.) Please state bust size 32, 34, 36, 38, 40 inches.  
38 N 3080—Pink 38 N 3081—White. \$2.79

**Regular.** (See table on opposite page for lengths.) Please state bust size wanted 32, 34, 36, 38, 40, 42, 44 inches.  
38 N 3079—Pink 38 N 3001—White. \$2.79

**Tall.** (2 in. longer than Regular Length.) State bust size 34, 36, 38, 40, 42, 44 in.  
38 N 3082—Pink 38 N 3083—White. \$2.79

Buy all your Christmas gifts the easy way, on Easy Terms—see details on page 256.



Every girl loves them—because they're so nice to wear! Luxury gifts at little cost

## Frilly Fancy Panties

**A** Fancy-free little briefs, with embroidery trim on sheer ninon all around leg openings! Sleek striped 1-bar tricot knit rayon . . . run-resistant, easy to hand wash. Elastic waistband, double fabric crotch. Shpg. wt. ea. 5 oz. State hip size 30-34; 35-38; 39-40 in.  
38 N 5366—Black 38 N 5365—White  
38 N 5364—Tearose  
Each . . . . . 87c; 3 for \$2.55

**B** Shadowy-sheer embroidered rayon ninon puts the feminine touch on flare leg openings. Striped knit rayon, in soft 1-bar tricot. Run-resistant, hand washable. Elastic waistband, double fabric crotch. Shpg. wt. ea. 6 oz. State hip size 32-36; 37-40; 41-44 in.  
38 N 5369—Black 38 N 5367—Tearose  
38 N 5368—White  
Each . . . . . 87c; 3 for \$2.55

**C** Silky-smooth, snug-fitting briefs, decorated around band leg openings with ruffy embroidery. 2-bar tricot knit rayon . . . runproof, hand washable. Elastic waistband, double fabric crotch. Shpg. wt. ea. 4 oz. State hip size 30-34; 35-38; 39-40 in.  
38 N 5362—Tearose 38 N 5363—White  
Each . . . . . 77c 3 for \$2.25

**D** Adorable, dainty briefs trimmed with misty cotton lace around leg openings. Fine 2-bar tricot knit rayon . . . runproof, smooth to touch. Elastic waistband, double fabric crotch. Hand wash. Shpg. wt. ea. 5 oz. State hip size 30-34; 35-38; 39-40 in.  
38 N 5361—White 38 N 5360—Tearose  
Each . . . . . 77c 3 for \$2.25



A \$5.98

B \$4.98



C \$3.98

D \$2.98

**Kerrybrooke**  
 THE RIGHT WAY  
 TO SAY  
 FASHIONS



E \$2.98

F \$4.98



G \$2.98

H \$3.98



A \$1.69

B \$1.49

C 98c

D 98c



E \$1.98

F \$1.98



G \$1.49

H \$1.69

## Aprons for entertaining . . Aprons for practical use

So smart and festive they make delightful Christmas gifts

**A** Shirred and Ruffled printed apron in cotton of flock dot weave. Deeply shirred with colored thread. Ric rac trimming and a handy pocket. Fits up to size 40. Washable. Shpg. wt. 6 oz. 72 N 6065—Light blue ground . . \$1.69  
72 N 6066—Pink ground . . . . . 1.69  
72 N 6067—Yellow ground . . . . . 1.69

**E** Black-Eyed Susan, a bib-top apron, charming colors with black dots and black ric rac. 80-square percale with eyelet embroidery (cotton) ruffles. Washable. Fits to size 40. Shpg. wt. 6 oz. 72 N 6059—Yellow, black dots . . \$1.98  
72 N 6060—Blue with black dots . . 1.98  
72 N 6061—Rose with black dots . . 1.98

**B** Permanent Finish Organdy frilled with 80-square percale and trimmed with colorful ric rac. It has such a festive holiday look it makes a charming gift. Tie back sash is organdy. Washable—and its crispness lasts. One size fits to size 40. Shpg. wt. 4 oz. 72 N 6064—White with print . . \$1.49

**F** Block Checked Cotton has a fan of white cotton eyelet embroidery at corner of bib and pocket. Sailor collar in back. Bright binding. Washable. One size fits to size 40. Shpg. wt. 5 oz. 72 N 6055—Red and white . . . \$1.98  
72 N 6056—Blue and white . . . . 1.98  
72 N 6057—Green and white . . . . 1.98

**C** Border Print cotton, splashed with color and of a very practical size. 80-square percale, Sanforized (max. fab. shrink. 1%). Generous sash ends. Notice that huge pocket. Bright colored piping. Washable. One size fits up to size 40. Shpg. wt. 5 oz. 72 N 6070—Assorted border prints .98c

**G** Bibbed Border Print so gay she'll want to wear it all day long. Sanforized (max. fab. shrink. 1%). 80-square percale, washable, and big enough to really protect her dress. Finished with bright binding. One size fits to size 40. Shipping weight 6 oz. 72 N 6068—Assorted border prints \$1.49

**D** Perky Stripes in excellent percale with a flirtatious ruffle, very wide and full. Two slantwise pockets, bright ric rac trimming. A wonderful gift for a smart girl. Washable. One size fits up to size 40. Shipping weight 4 oz. 72 N 6062—Red and white . . . . .98c  
72 N 6063—Blue and white . . . . .98c

**H** Double Apron. It isn't really two aprons, it just looks that way because of the way the pretty ruffles are put on. Printed percale with white picot-edged organdy frills and very becoming. Washable. One size fits up to size 40. Shipping weight 6 oz. 72 N 6058—Floral print . . . . . \$1.69

# Kerrybrooke Robes and Housecoats

"and every maid will bustle down  
to show her gown  
not one will miss that one day."



**A** All Wool Flannel Classic tailored especially for us with Kerrybrooke features . . . wide wrap, double needle stitching, beautiful fit, finely finished inside and out. White rayon piping, tassels. Dry clean. Please state size. Shpg. wt. each 2 lbs. 6 oz. Sizes 12, 14, 16, 18, 20; Sizes 38, 40, 42, 44; see size scale, page 116. size scale below.  
 †27 N 7795—Bright blue †27 N 7800—Bright blue  
 †27 N 7796—Dark red †27 N 7801—Wine red  
 †27 N 7797—Navy blue †27 N 7802—Navy blue  
 Each . . . . . \$9.98 Each . . . . . \$10.98

**B** Embroidered All Wool Flannel gives her a dash of drama with its big white embroidered flowers on the smart curving lapels and pointed patch pocket. Stunning against the rich color of the robe. Luxuriously warm with wide overlap, slim waist and full skirt. Self belt and loops with white rayon tassels. Dry clean. Sizes 12, 14, 16, 18, 20; see size scale on page 116. State size. Shpg. wt. 2 lbs. 6 oz.  
 †27 N 7890—Bright blue . . . . . \$9.98  
 †27 N 7891—Deep red . . . . . 9.98

### Descriptions of robes on opposite page

**C** Quilted Rayon In Mandarin Style has a darling little upstanding collar, bell sleeves and contrasting frog fastenings. Such fine, soft quilting is usually much more costly. Exquisite colors with contrasting lining. A superlative gift. Wide overlap. Dry clean. Sizes 12, 14, 16, 18, 20; size scale on page 116. State size. Shpg. wt. 2 lbs. 9 oz.  
 †27 N 7895—Medium blue with tearose lining. \$12.98  
 †27 N 7896—Tearose with medium blue lining. 12.98

**D** Two-Tone Hostess Gown is so flattering you can safely choose it for anyone. Rayon crepe of the Romaine type with pastel-toned panel in front, very slenderizing, very smart. Softly shirred at shoulders, loose wing sleeves. Dry clean. Sizes 12, 14, 16, 18, 20; size scale, page 116. State size. Shpg. wt. 1 lb. 10 oz.  
 †27 N 7900—Burgundy wine with rose panel. . . \$9.98  
 †27 N 7901—Navy blue with powder blue panel. 9.98  
 †27 N 7902—Powder blue with rose panel. . . . 9.98

**E** Quilted Gauntlet Style. Give it to someone who adores the newest and smartest. Deep gauntlet cuffs are quilted rayon. Wide peaked lapels are quilted, too. Both contrast dramatically with the color of the Luana rayon robe. It's slim to the waist, shirred for fullness in the skirt. Dry clean. Sizes 12, 14, 16, 18, 20; scale, page 116. State size. Shpg. wt. 2 lbs.  
 †27 N 7905—Medium blue with rose trimming. \$8.98  
 †27 N 7906—Rose with medium blue trimming. 8.98

Numbers marked † shipped from Philadelphia or Kansas City. Order, pay postage from Sears nearest mail order house. For Sears Easy Terms . . see page 256.

Order size	38	40	42	44
If hips are	42½	44½	46½	48½ in.
If waist is	34	36	38	40 in.
If bust is	40	42	44	46 in.

Also comes in women's sizes

Two very fine all wool flannel robes \$9.98 each, misses' sizes





Kerrybrooke

THE RIGHT WAY  
TO SAY

FASHIONS

**C** Quilted Rayon Mandarin Style \$12.98

**D** Rayon Crepe Hostess Gown \$9.98

**E** Quilt-trimmed Rayon \$8.98

ALL PAGE 115... HOUSECOATS

# Kerrybrooke Housecoats

.. rayons and cottons

"Heap on more wood—the wind is chill—  
But let it whistle as it will,  
We'll keep our Christmas merry still."



**A** The coachman silhouette in a fine rayon robe . . . so smart she'll slip right into it on Christmas morning. Flattering double-breasted lines; self belt ties in back. The skirt has a gored back with generous front overlap. Shoulder pads. Dry clean. *Sizes 12, 14, 16, 18, 20. Please state size.* Shipping weight 2 lbs. 10 oz.

♦27 N 7925—Med. blue      ♦27 N 7926—Rose  
♦27 N 7927—Aqua blue      Each. . . . . \$7.98

**B** Polka dot rayon crepe housecoat, destined to make a hit with the lucky woman who gets it. It's smartly tailored for travel or stay-at-home. Slimming set-in waistband, wide sweeping skirt. One hip pocket; shoulder pads. Hand washable. *Sizes 14, 16, 18, 20. Please state size.* Shpg. wt. 2 lbs. 8 oz.

♦27 N 7930—Navy blue      ♦27 N 7931—Med. red  
♦27 N 7932—Aqua blue      Each. . . . . \$5.98

**C** Rayon crepe hostess coat, a gift she'll greet with rapture. White embroidered bodice panels form two generous pockets; the shirred back skirt dips gracefully for fashion news and slim fit. Shoulder pads. Dry clean. *Sizes 12, 14, 16, 18, 20. State size.* Shpg. wt. 1 lb. 8 oz.

♦27 N 7910—Navy blue      ♦27 N 7911—Wine red  
♦27 N 7912—Med. blue      Each. . . . . \$9.98

**D** Gay border print in a cotton plisse . . . a housecoat she'll love because it's so pretty and practical. Side wrapped style with wide revers and a handy pocket. Washable; needs no ironing. *Misses' sizes 12, 14, 16, 18, 20. Women's sizes 38, 40, 42, 44; size scale on page 114. State size.* Shpg. wt. 1 lb. 8 oz.

♦27 N 7920—Dark wine      ♦27 N 7921—Med. blue.  
♦27 N 7922—Navy blue      Each. . . . . \$4.98

**E** Peplum housecoat in a dramatic flowered soft rayon crepe . . . smart enough for the first lady on your gift list. Graceful surplice lines to make her look tall and willowy. Tie belt in front; all around peplum flares over full skirt. Dry clean. *Sizes 12, 14, 16, 18. Please state size.* Shipping weight 1 pound 10 ounces.

♦27 N 7915—Medium blue. . . . . \$6.98  
♦27 N 7916—Medium rose. . . . . 6.98

### Misses' Size Scale for Robes and Housecoats

Order size:	12	14	16	18	20
If hips are:	35	36½	38	39½	41 in.
If waist is:	25½	27	28½	30	32 in.
If bust is:	32½	34	35½	37	39 in.

Numbers marked ♦ shipped from Philadelphia or Kansas City. Order, pay postage from Sears nearest mail order house. Easy Terms page 256.



Kerrybrooke

THE RIGHT WAY  
TO SAY

FASHIONS

**A** The Coachman Silhouette \$7.98

**B** Polka Dot Rayon Crepe \$5.98

Kerrybrooke

THE RIGHT WAY  
TO SAY

FASHIONS



C Rayon Crepe Hostess Coat \$9.98

D Gay Border Print Cotton \$4.98

E Rayon Print with Peplum \$6.98





**Kerrybrooke**

THE RIGHT WAY  
TO SAY

**WOMEN'S  
SHOES**

**F \$3.88**

**G \$3.88**

**H \$2.49**

**J \$2.69**

**K \$1.98**

**L \$2.89**

SLIPPERS ILLUSTRATED ABOVE ARE DESCRIBED IN COLUMNS BELOW

## Dear to her heart . . . the Christmas Gift of Leather Slippers

**F** **Pretty Bridge Slipper** . . . just the right gift for Mother or sister. Has a soft matching draped bow. 3 lovely colors to match her lounging robe. Sturdy leather sole, 1½-in. heel.

- C (medium) sizes 4 to 9. Half sizes too. *Please state size.* Shpg. wt. 1 lb.
- 15 N 3015—Blue kid
- 15 N 3016—Wine (dark red) kid
- 15 N 3017—Black kid . . . . . Pair \$3.88

**H** **You Can Remember More People** . . . and spend less if you buy inexpensive gifts like these pretty kid-skin slippers. Women love to get them, too; they promise so many hours of foot-comfort. Soft and flexible, simple style; padded leather sole, 1½-inch heel. Get a pair for yourself, too.

- C (medium) sizes 4 to 9. No half sizes. *Please state size.* Shpg. wt. 1 lb.
- 15 N 3654—Black . . . . . Pair \$2.49

**K** **Gay House Coat Companion** . . . grand to slip into when your feet are tired. Flexible leather shirred around a smooth peaked vamp. Padded sole, low wedge heel. Choice of three practical colors.

- C (medium) sizes 4 to 11. No half sizes. *Please state size.* Shpg. wt. 1 lb.
- 15 N 3682—Wine (dark red)
- 15 N 3840—Blue
- 15 N 3841—Black . . . . . Pair \$1.98

**G** **Women of Any Age** . . . like kid-skin D'Orsay slippers. They feel so good, yet look so neat and trim; give excellent wear. Choose blue or black for feminine members of your family. Leather sole, 1½-inch heel.

- C (medium) sizes 4 to 9. Half sizes too. *Please state size.* Shpg. wt. 1 lb.
- 15 N 3018—Blue
- 15 N 3019—Black . . . . . Pair \$3.88

**J** **There's No Nicer Gift Than a Soft Supple Kidskin Slipper** . . . so blissfully comfortable you can wear them around the house all day long, so serviceable, they last a long time. In black that you can wear with everything. Padded leather sole and low wedge heel.

- C (medium) sizes 4 to 9. No half sizes. *Please state size.* Shpg. wt. 1 lb.
- 15 N 3854—Black . . . . . Pair \$2.69

**L** **Feminine Little Scuff** . . . makes lounging a joy. In black kidskin, soft, flexible, easy on your feet. Grand gift for school girls, careerists, women at home; so easy to slip in and out of when you're rushing around in the morning. Padded sole and wedge heel. Get a pair for yourself, too.

- D (medium width) 4 to 9. No half sizes. *Please state size.* Shpg. wt. 1 lb.
- 15 N 3058—Black . . . . . Pair \$2.89

## Kerrybrooke Women's Foot-flattering Slippers

" . . . to sit by the fire, in friendly desire  
each other in love to greet."



See Opposite Page for illustrations of slippers described in this column

**F** **Luxurious Rayon Satin Scuff** . . . open toe, leather sole, 1½-inch heel.

- C (medium) sizes 4 to 9. Half sizes, too. *Please state size.* Shpg. wt. 1 lb.
- 15 N 3855—Blue
- 15 N 3856—Wine (dark red) . . . . . Pair \$2.69
- 15 N 3857—Black

**G** **Nailhead Studded Bands** . . . rayon faille, platform. Adjustable strap. Leather sole, low wedge heel.

- C (medium) sizes 5 to 9. Half sizes too. *Please state size.* Shpg. wt. 1 lb.
- 15 N 3776—Blue
- 15 N 3777—Wine (dark red) . Pr. \$1.98
- 15 N 3778—Black

**J** **Electrified Shearling Scuff** . . . rayon faille platform, leather sole.

- C (medium) sizes 4 to 9. Half sizes too. *Please state size.* Shpg. wt. 1 lb.
- 15 N 3894—Blue
- 15 N 3897—White
- 15 N 3895—Red . . . . . Pair \$2.98

**L** **Rayon Faille** . . . draped bow. Stretchable strap, platform, leather sole. Lovely colors.

- C (medium) sizes 4 to 8. Half sizes too. *Please state size.* Shpg. wt. 1 lb.
- 15 N 3048—Pink, black trim
- 15 N 3046—Light blue, med. blue trim
- 15 N 3047—Pink, blue trim . Pr. \$2.98

**N** **Shearling Scuff** . . . rayon faille covered platform. Leather sole and heel. Stretchable back strap.

- C (medium) sizes 5 to 9. Half sizes too. *Please state size.* Shpg. wt. 1 lb.
- 15 N 3009—Pink
- 15 N 3010—Red
- 15 N 3008—Blue . . . . . Pair \$3.49

**R** **Beautiful Moccasin** . . . shearling with leather side out. Leather sole. Shearling sock lining.

- C (medium) sizes 4 to 9. No half sizes. *Please state size.* Shpg. wt. 1 lb.
- 15 N 3815—Blue
- 15 N 3816—Red . . . . . Pair \$2.88

**V** **Shearling Boot** . . . Cotton fleece lining, leather sole.

- Wide width sizes 4 to 9. No half sizes. *Please state size.* Shpg. wt. 1 lb.
- 15 N 3714—Blue
- 15 N 3716—White
- 15 N 3715—Red . . . . . Pair \$2.98

**X** **Shearling trim** . . . cotton corduroy platform. Padded sole.

- C (medium) sizes 4 to 9. No half sizes. *Please state size.* Shpg. wt. 1 lb.
- 15 N 3005—Blue leather
- 15 N 3006—Red leather . . . . . Pair \$2.98

**HOW TO ORDER WOMEN'S SLIPPERS:** Order slippers *same size* as your shoe, where slippers are listed in that size. If slipper comes in whole sizes only and you wear a half size, order as follows: for A, B and C shoe widths, *order slipper half-size smaller* than shoe. For D and E shoe widths, *order slipper half-size larger* than your shoe. Due to slight variations, fiber content of felt and wool is not stated in the catalog, but as required by the Wool Products Labeling Act, is clearly marked on all wool or felt slippers.

**H** **Lustrous Rayon Satin Bridge Slipper**, softly trimmed with shirring. Leather sole, 2-inch heel.

- C (medium) sizes 5 to 9. Half sizes too. *Please state size.* Shpg. wt. 1 lb.
- 15 N 3041—Blue
- 15 N 3042—Wine (dark red) . Pr. \$3.49
- 15 N 3043—Black

**K** **Pastel Scuff** . . . striped rayon velvet, white fur trim. Platform, stretchable strap, leather sole.

- C (medium) sizes 4 to 8. No half sizes. *Please state size.* Shpg. wt. 1 lb.
- 15 N 3603—Light Blue
- 15 N 3604—Pink . . . . . Pair \$2.49

**M** **A Gift for You or Someone Else** . . . rayon satin; knotted vamp trim. Fits high over instep. Woven rayon platform. Leather sole.

- C (medium) sizes 5 to 9. Half sizes too. *Please state size.* Shpg. wt. 1 lb.
- 15 N 3743—Blue
- 15 N 3744—Wine (dk. red) . Pair \$2.88

**P** **Rayon Satin Bridge Bowed Slipper** . . . pillow-soft platform, padded sole; softly draped bow.

- C (medium) sizes 4 to 9. No half sizes. *Please state size.* Shpg. wt. 1 lb.
- 15 N 3036—Black
- 15 N 3034—Blue
- 15 N 3035—Wine (dk. red) . Pair \$1.98

**T** **Cotton Chenille Slipper** . . . soft foot-caressing, fluffy white fur. Cushion-platform, padded sole.

- C (medium) sizes 4 to 9. No half sizes. *Please state size.* Shpg. wt. 1 lb.
- 15 N 3044—Royal (medium blue)
- 15 N 3045—Wine (dk. red) . Pair \$1.98

**W** **Made in England** . . . finer grade felt boot; plush collar, wall last, platform, soft sole, wedge heel.

- Wide width sizes 4 to 8. No half sizes. *Please state size.* Shpg. wt. 1 lb.
- 15N3038—Lt. pink
- 15N3037—Lt. blue
- 15 N 3039—Wine (dk. red) . Pair \$2.98

**Y** **Two Color** . . . leather vamp; imitation patent trim. Padded sole.

- C (medium) sizes 4 to 9. Half sizes too. *Please state size.* Shpg. wt. 1 lb. 2 oz.
- 15 N 3001—Blue, black trim
- 15 N 3002—Red, black trim . Pr. \$1.98



F \$2.69

G \$1.98

H \$3.49



J \$2.98

K \$2.49

L \$2.98



M \$2.88

N \$3.49

P \$1.98



R \$2.88

T \$1.98

V \$2.98



W \$2.98

X \$2.98

Y \$1.98

Slippers . . . lovely answers to your gift problems . . . available on Sears Easy Terms; see page 256

PCHKMN<sub>2</sub>PAGE 119 . . . WOMEN'S SLIPPERS



## 15 Lovely ways to say "Merry Christmas" . . . Colorful Kerrybrooke Slippers

**F** First Choice for an inexpensive Gift . . . lovely rayon crepe slipper; simple, smart. Rounded vamp, slenderizing center seam. Soft padded sole, 1 3/4-inch heel. Pretty with any of your house coats. • C (medium) 4 to 9. No half sizes. *State size.* Shpg. wt. 1 lb. 15 N 3667—Black. . . Pair \$1.49

**L** If She Loves Her Comfort . . . give her this foot-coddling striped cotton chenille slipper, with a rayon cuff in matching color. Padded sole, 1-inch heel. In rich wine or blue. • C (medium) 5 to 9. No half sizes. *State size.* Shpg. wt. 1 lb. 15 N 3050—Wine (dark red) 15 N 3049—Blue. . . Pair \$1.39

**T** Gay Foot-Flattering . . . foot caressing comfort. Shining rayon satin scuff. Open toe, cushion-platform, leather sole, wedge heel. • C (medium) 4 to 8. Half sizes too. *State size.* Shpg. wt. 1 lb. 15 N 3053—Medium Blue 15 N 3054—Light Blue 15 N 3055—Red. . . Pair \$1.98

Due to slight variations, the fiber content of felt and wool is not stated in the catalog, but as required by the Wool Products Labeling Act, is clearly marked on all wool and felt slippers.

**G** Neat and Sweet Gift Slipper . . . just what she'll want to see in her Christmas package. Get a pair for yourself, too. Rayon faille with open toe. Sturdy leather sole, 1-inch heel. • C (medium) 5 to 9. Half sizes too. *State size.* Shpg. wt. 1 lb. 15 N 3837—Black. . . Pair \$1.88

**M** She'll Look for Them . . . the moment she gets up on chilly mornings. Slippers made from our finest shoe felt, rich two-tone effect. Padded sole and heel. • C (medium) 4 to 9. No half sizes. *State size.* Shpg. wt. 1 lb. 15 N 3742—Wine (dark red) 15 N 3741—Blue. . . Pair \$1.59

**V** Favorite Softie . . . any woman will enjoy wearing. Rayon satin stitched in quilted effect. High vamp. Padded soft sole, 1-inch heel. • C (medium) 4 to 9. No half sizes. *State size.* Shpg. wt. 1 lb. 15 N 3890—Royal (med. blue) 15 N 3891—Wine (dark red) 15 N 3892—Black. . . Pair \$1.39

**H** Give Her This Black Beauty . . . for blissful indoor comfort. Simply styled in genuine nylon that wears and wears. Smart for company dinners with lovely hostess frocks. Leather sole. 1 1/2-inch heel. • C (medium) 4 to 9. Half sizes too. *State size.* Shpg. wt. 1 lb. 15 N 3617—Black. . . Pair \$2.99

**N** Low Priced . . . cozy and warm. Sturdy felt slipper. High squared vamp, rayon ribbon and pompon. Padded sole and wedge heel. • C (medium) 4 to 9. No half sizes. *State size.* Shpg. wt. 1 lb. 15 N 3794—Blue 15 N 3795—Wine (dark red) 15 N 3792—Brown. . . Pair \$1.09

**W** For Mother, Aunt or Sister Sue . . . dainty rayon faille slipper; shimmering cuff of matching rayon satin over instep. Very practical, very feminine. Leather sole, low heel. • C (med.) 4 to 9. Half sizes too. *State size.* Shpg. wt. 1 lb. 15 N 3868—Wine (dark red) 15 N 3867—Blue. . . Pair \$1.99

**J** Beautiful Shiny Plastic Scuff . . . a gift any woman would appreciate. The vamp is stitched with eyelets worked in bright red; soft rayon faille covered cushion platform; sturdy leather sole. • C (medium) 4 to 8. Half sizes too. *State size.* Shpg. wt. 1 lb. 15 N 3056—Black. . . Pair \$1.98

**P** Paddle Around in Comfort . . . in Canadian-made, bright color hand-beaded soft leather moc-style slippers. Padded leather sole and heel. • C (medium) 4 to 9. No half sizes. *State size.* Shpg. wt. 1 lb. 15 N 3605—Royal (med. blue) 15 N 3606—Red 15 N 3607—Brown. . . Pair \$2.98

**X** Feminine Adorables . . . gay rayon in a floral print, plain rayon trim. Thrift-priced for Christmas-giving. Padded sole, 1 1/4-inch heel. • C (medium) 4 to 9. No half sizes. *State size.* Shpg. wt. 1 lb. 15 N 3702—Floral print on blue 15 N 3703—Floral print on wine (dark red) ground. . . Pair \$1.49

**K** Dainty Scuff . . . as smart looking as a street shoe. 2 bands cross to form vamp. Open toe. Black shiny plastic. Cushion-soft platform covered with black patent. Leather sole, wedge heel. • C (medium) 4 to 8. Half sizes too. *State size.* Shpg. wt. 1 lb. 15 N 3057—Black. . . Pair \$1.98

**R** Women Like This . . . lustrous reptile-grained imitation leather. High vamp. Real leather sole, 1-inch heel. • C (medium) 5 to 9. Half sizes too. *State size.* Shpg. wt. 1 lb. 15 N 3845—Red 15 N 3842—Blue 15 N 3843—Wine (dark red) 15 N 3844—Black. . . Pair \$1.88

**Y** A Gift for a Lovely Lady . . . Beautiful scuff in deep wine or black. Rayon faille with a soft cushion-comfort platform. Covered with rayon faille. Leather sole, wedge heel. • C (medium) 4 to 8. Half sizes too. *State size.* Shpg. wt. 1 lb. 15 N 3051—Wine (dark red) 15 N 3052—Black. . . Pair \$2.59

**HOW TO ORDER WOMEN'S SLIPPERS:** Order slippers *same size* as your shoe, wherever slippers are listed in that size. If slipper comes in whole sizes only and you wear a half size, *order as follows:* for A, B and C shoe widths, *order slipper half-size smaller* than your shoe. For D and E shoe widths, *order slipper half-size larger* than your shoe. Order slippers on Easy Term orders of \$10 or more . . . See page 256 for details.



**A** \$7.98 Cotton Velveteen

**B** \$5.98 Cotton Velveteen

**C** \$3.98 Spun Rayon

**D** \$3.79 Rayon Velvet



**E** \$10.98 100% Virgin Wool

**F** \$5.98 Quilted Cotton

**G** \$2.98 Cotton Chenille

**H** \$2.49 Cotton Chenille



A She'll love a glamorous  
"Sno-Belle" fur pillbox

\$2.59 each in its own plastic box



B \$2.98 set

C \$3.59 set



D \$2.98 set



E \$1.98 set



F \$1.98 set



G \$3.49 set



H \$1.98



J \$1.39



K \$1.69



L \$2.98 set





**F** \$1.59

**G** \$1.98

**H** \$1.98

**J** \$2.49

**K** 98c



**L** \$3.69

**M** \$1.69

**N** \$2.99

**P** \$2.49

**R** \$1.98



**T** \$1.49

**V** 99c

**W** \$2.98

**X** \$1.98

**Y** \$2.98

**Bedtime Biltwels . . . warm felts, shearlings; sturdy leathers**

**Save shoes, save floors . . . sizes for infants and children**



- F** Shearling Upper, split leather sole. • Children's 5, 6, 7, 8, 9, 10, 11, 12, 13, 1, 2. No half sizes. Wide width only. *Please state size.* Shpg. wt. 10 oz. 15 N 982—Red 15 N 983—Natural 15 N 981—Blue . . . . . Pair \$1.59
- G** Crushed Leather Moccasin. Shearling lining and cuff. Leather sole. • Children's sizes 5, 6, 7, 8, 9, 10. No half sizes. Wide width only. *Please state size.* Shipping weight 10 ounces. 15 N 948—Pink, blue trim . . . Pair \$1.98
- H** Bunny Slipper . . . soft natural color shearling, red trim. Leather sole. • Children's 5, 6, 7, 8, 9, 10, 11, 12, 13, 1, 2. No half sizes. Wide width only. *Please state size.* Shpg. wt. 10 oz. 15 N 988—Natural . . . . . Pair \$1.98
- J** Shearling Lined, leather upper, sole. • Children's sizes 11, 12, 13, 1, 2, 3. No half sizes. Wide width only. *Please state size.* Shipping weight 10 ounces. 15 N 950—Red 15 N 949—Blue . . . . . Pair \$2.49
- K** Rayon Plush Slippers. Leather sole. • Children's 6, 7, 8, 9, 10, 11, 12, 13, 1, 2, 3. No half sizes. Wide width only. *Please state size.* Shpg. wt. 10 oz. 15 N 930—Red 15 N 929—Blue . . . . . Pair 98c
- L** Shearling Lined, leather upper, sole. • Children's 9, 10, 11, 12, 13, 1, 2, 3. No half sizes. Wide width only. *Please state size.* Shipping weight 10 ounces. 15 N 901—Red 15 N 900—Blue . . . . . Pair \$3.69
- M** Rayon Satin, platform, leather sole. • Children's sizes 12½, 13, 13½, 1, 1½, 2, 2½, 3. Wide width only. *Please state size.* Shipping weight 10 oz. 15 N 916—Red 15 N 915—Blue . . . . . Pair \$1.69
- N** Cushiony Platform. Leather sole. • Children's 8, 9, 10, 11, 12, 13, 1, 2, 3. No half sizes. Wide width only. *Please state size.* Shipping weight 10 oz. 15 N 992—Red leather 15 N 993—Black plastic . . . . . Pair \$2.99
- P** Brown Leather Zip Boot, turn down collar. Padded leather sole, heel. • Children's sizes 9, 10, 11, 12, 13, 1, 2, 3. No half sizes. Wide width only. *Please state size.* Shipping weight 10 oz. 15 N 913—Brown . . . . . Pair \$2.49
- R** Leather Upper, heavy leather sole. • Children's sizes 8, 9, 10, 11, 12, 13, 1, 2. No half sizes. Wide width only. *Please state size.* Shipping weight 10 oz. 15 N 925—Blue 15 N 926—Brown . . . . . Pair \$1.98
- T** Zip Front Felt Bootie, padded sole. • Children's 5, 6, 7, 8, 9, 10, 11, 12, 13, 1, 2, 3. No half sizes. Wide width only. *Please state size.* Shpg. wt. 10 oz. 15 N 966—Red 15 N 965—Blue . . . . . Pair \$1.45
- V** Colorful Felt Bootie . . . rayon tassel. Padded sole, wedge heel. • Children's sizes 7, 8, 9, 10, 11, 12, 13, 1. No half sizes. Wide width only. *Please state size.* Shipping weight 10 oz. 15 N 932—Red 15 N 931—Blue . . . . . Pair 99c
- W** Cozy Felt High Zipper Boot. Shearling sock lining. Leather sole. • Children's sizes 9, 10, 11, 12, 13, 1, 2, 3. No half sizes. Wide width only. *Please state size.* Shipping weight 10 oz. 15 N 960—Blue 15 N 961—Red . . . . . Pair \$2.98
- X** Sturdy Leather Boot, snap fastening at instep. Cut high for extra warmth. Padded sole and wedge heel. • Children's 6, 7, 8, 9, 10, 11, 12, 13, 1, 2, 3. No half sizes. Wide width only. *Please state size.* Shipping weight 10 oz. 15 N 914—Brown . . . . . Pair \$1.98
- Y** Woven Wool, zip front. Sponge rubber platform, leather sole. • Children's sizes 12, 13, 1, 2 and 3. No half sizes. Wide width only. *Please state size.* Shipping weight 10 ounces. 15 N 903—Red 15 N 902—Blue . . . . . Pair \$2.98

Due to slight variations, the wool content of felt and wool slippers is not stated in the catalog; it is marked plainly on merchandise as required by the Wool Products Labeling Act.

**HOW TO ORDER CHILDREN'S SLIPPERS:** Order the *same size* as your shoe wherever slippers are listed in that size. If the slipper comes in whole sizes only and you wear a half size shoe, order the *next size larger.* (Example: for size 6½ shoe, order size 7 slipper.)



**A** \$8.95 also in blue and maroon



Zipper book pocket protects valuables



**B** \$7.49 also in brown

Quilted rayon lining, warmly innerlined



**C** \$4.98 also in blue

Roomy sports back, smart half-belt



**D** \$5.98 also in red and black, and black and white



Juniors' **E** \$3.69 Boys' **F** \$4.59



**G** 69c

**H** \$1.89

**J** \$2.79

**K** \$1.95

*Boyville*  
 THE RIGHT WAY  
 TO SAY  
**BOYS' CLOTHING**



**L** \$1.39



**M** 55c



# Boyville Gloves, Outerwear, Robes, Scarfs

"Father calls me William, Sister calls me Will.  
Mother calls me Willie,  
but the fellers call me Bill."



ITEMS DESCRIBED BELOW ARE ILLUSTRATED ON OPPOSITE PAGE

## Our four most popular Outerwear styles—all 100% virgin wool! Bold, he-man plaids that are sure to please your boy

- A** Our finest 33-ounce Winter Fleece Mackinaw. Best buy we've seen! Loomed from top quality long staple yarns to our own exacting specifications . . . tops for warmth and wearing comfort. Colorful cotton plaid body lining; lined sleeves. 2 muff, 2 flap pockets; zip book pocket. Detachable 3-piece belt. Sizes 8, 10, 12, 14, 16, 18. Please state size. Shpg. wt. 4 lbs.  
40 N 3729—Brown plaid . . . . . 40 N 3727—Blue plaid  
40 N 3728—Maroon plaid . . . . . **\$8.95**
- B** 33-oz. Winter Fleece Surcoat . . . quilted lined. A knockout for warmth and colorful good looks! About 2 inches longer than regular jackets. Smart plaid front contrasts with solid tone sleeves, collar and back. Quilted rayon body lining; rayon lined sleeves. Zip front, zip chest pocket. 2 muff pockets. Sizes 8, 10, 12, 14, 16, 18. Please state size. Shpg. wt. 2 lbs. 10 oz.  
40 N 3424—Blue 2-tone . . . . . 40 N 3425—Brown 2-tone . . . **\$7.49**
- C** 33-oz. Winter Fleece Cossack Jacket. Our finest . . . a jacket any boy will be proud to own! Cut for action in popular Cossack style; expertly tailored for correct fit, reinforced for long wear. Handy zipper front; 2 deep muff pockets. Belted sports back. Extra heavyweight; so warm, needs no lining. Sizes 8, 10, 12, 14, 16, 18. Please state size. Shpg. wt. 2 lbs. 8 oz.  
40 N 3422—Brown plaid . . . . . 40 N 3421—Blue plaid . . . . . **\$4.98**
- D** Heavy 22-ounce virgin wool Shirt-Jacket. Buffalo Plaids—Young America's favorites! Woven from selected long staple yarns in a quality that's outstanding value at this price! Carefully tailored. 2 double-button flap pockets; 2-way collar button cuffs. Front and sleeve facings. Unlined, finished seams. Sizes 8, 10, 12, 14, 16, 18. Please state size. Shpg. wt. 1 lb. 8 oz.  
40 N 6602—Black and gold . . . . . 40 N 6600—Red and black  
40 N 6601—Black and white . . . . . **\$5.98**

- E F** Warm part wool flannel robe. Richly blended flannel fabric of 75% wool, 25% rayon provides warmth without bulk, assures long wear. Full wrap-around style with wide front facing, shawl collar, rayon cord trim, self material sash belt. Dry clean. State color med. blue, maroon. Shpg. wt. 13 oz.  
**F** 43 N 22—State size 4, 6, 8, 10. See size chart below . . . . . **\$3.69**  
**E** 43 N 124—State size 12, 14, 16, 18. See size chart below . . . . . **\$4.59**

- G** 100% wool scarf—a smart gift for little fellows! Soft, closely knit fabric keeps neck and chest snugly warm. Attractive assorted plaid patterns. Just the right size: 9 x 41 in. Individually boxed.  
State color brown, blue or maroon.  
43 N 214—Shpg. wt. 4 oz. . . . . **69c**
- H** Junior part wool scarf and glove set knit of 50% new wool, 50% rayon. 8½x41-in. fringed scarf; matched color ribbed wrist gloves.  
State color maize, camel tan, maroon.  
State size 5½ or 6½. See How to Order at right. Boxed.  
43 N 215—Shpg. wt. 11 oz. . . . . **\$1.89**

- J** All wool scarf and glove set for big boys. Loomed scarf is 10½x44 in. Seamless knit matching gloves have cotton latex in wrists. Boxed.  
State color maize, camel tan or maroon. State size med. (7) or large (8). See how to order at right.  
43 N 306—Shpg. wt. 11 oz. . . . . **\$2.79**
- R** Plaid gauntlet style mittens. Big swagger mitts with all wool Buffalo plaid backs and cuffs; capeskin leather palms. Cotton fleece blizzard lining for real warmth.  
Colors red or blue. Sizes med. (7), large (8). State size, color.  
43 N 914—Shpg. wt. 6 oz. . . . . **\$1.95**

- L** Leather-grained plastic Helmet—more durable than leather. Perfect protection against winter cold Fleecy rayon lining; adjustable strap.  
State color tan or red. State size small (6½-6¾), medium (6¾-6¾), large (6¾-7¾). Size chart page 133.  
43 N 727—Shpg. wt. 8 oz. . . . . **\$1.39**
- M** New type, lambskin fur Ear Muffs. Soft, furry deep pile side is worn next to ears for real warmth. Adjustable headband for exact fit. Gaily decorated with winter sports scene. An inexpensive gift, but one he will prize!  
State color red, blue or brown.  
43 N 200—Shpg. wt. 4 oz. . . . . **55c**

**How to Order Boys' Robes**  
If chest is . . . 22 . . . 24 . . . 26 . . . 28 . . . 30 . . . 32 . . . 33 . . . 34 in.  
If height is . . . 36-40 . . . 41-46 . . . 47-50 . . . 51-54 . . . 55-58 . . . 59-61 . . . 62-64 . . . 65-66 in.  
Order size . . . 4 . . . 6 . . . 8 . . . 10 . . . 12 . . . 14 . . . 16 . . . 18



## Warm, sturdy Gloves, Mittens . . . for dress or winter play

- N** Cowboy gauntlet style—popular 'cause they're tough, warm! Fringed bound edge artificial leather cuffs. Cotton and rayon mixture glove. Colors blue with red cuffs; tan with brown cuffs. Sizes 5½, 6½. State size and color. See How to Measure.  
43 N 817—Shpg. wt. 4 oz. . . . . **49c**
- P** Fine imported Capeskin leather for dress. Soft, strong, scuff-proof! Shirred wrist slip-on style. Lined with warm cotton fleece. Color: brown.  
43 N 823—State size 5½, 6, 6½. See How to Measure. Shpg. wt. 4 oz. **\$1.98**  
43 N 925—State size 7, 7½, 8. See How to Measure. Shpg. wt. 5 oz. **\$2.19**
- R** Roy Rogers Cowboy Gauntlet Gloves of unlined all grain horsehide. Fringed cuffs trimmed with Roy Rogers and horse Trigger, nailhead star and jewel-like stones. State color: natural, light brown. State size: 6½, 7½.  
43 N 800—Shpg. wt. 6 oz. . . . . **\$1.98**
- S** Top quality smooth finish horsehide leather—a handsome durable gift! Slip-on style, warmly lined with 35% wool, 16% rayon, 49% cotton. Dressy whipstitched sewing. Color dark brown. State size small (7), medium (7½), large (8). See below.  
43 N 917—Shpg. wt. 5 oz. . . . . **\$2.79**

### HOW TO ORDER BOYS' GLOVES AND MITTENS

Have hand open with fingers touching and thumb extended. Place tape around hand over knuckles. Do not include thumb. Then close fist and take measurement in inches. If hand measures between 2 sizes, order larger one.



## Boys can't have too many shirts!

- Rib knit cotton** with gay all-over ski pattern, ribbed cuffs, crew neck, hemmed bottom. Wash separately. Sizes Small (8-10), medium (12-14), large (16-18). Please state size. See size chart below. Shpg. wt. 8 oz.  
43 N 4323—Blue  
43 N 4324—Tan . . . . . **98c**
- Checked cotton twill Sports Shirt.** Sanforized—won't shrink over 1%. 2-way collar, in-or-out bottom. Washfast. Sizes 4, 6, 8, 10, 12, 14, 16, 18. State size. See below. Shpg. wt. 12 oz.  
43 N 3540—Blue-red check  
43 N 3541—Brown-gold check  
43 N 3542—Green-brown check **\$1.98**

### HOW TO ORDER BOYS' SPORTS, AND KNIT SHIRTS

If chest measures . . . 22 . . . 24 . . . 26 . . . 28 . . . 30 . . . 32 . . . 33 . . . 34 in.  
Order size . . . 4 . . . 6 . . . 8 . . . 10 . . . 12 . . . 14 . . . 16 . . . 18  
Measure chest around body over underwear, well up under arms



**F** Genuine Kid Leather. Just what that boy on your list wants for dashing around getting ready for school, for evening hours at home. He'll be proud of their good looks, their fine quality, their grown-up style. Soft, supple kid leather uppers, checked cloth lining. Padded leather sole and heel.

• Boys' full sizes 1, 2, 3, 4, 5. Wide width. *State size.* Shpg. wt. 1 lb. 4 oz. 67 N 5952—Brown kid . . . Pair \$2.19

**G** Boys' Everett . . . a gift for year 'round comfort. Easy to slip into, soft feeling. Pliant, longwearing tan imitation leather uppers, with embossed design on vamp. Genuine-leather sole, rubber heel. Here's an inexpensive present that's useful . . . and good-looking, too.

• Boys' sizes 1, 1½, 2, 2½, 3, 3½, 4, 4½, 5, 5½. Wide width. *Please state size.* Shipping weight 1 lb. 5 oz. 67 N 5995—Boys' tan . . . Pair \$1.69



**Gold Bond**

THE RIGHT WAY TO SAY

BOYS' SHOES

**H** Gold Bond Casuals . . . boys everywhere like them for school, to wear all the time. Roomy and comfortable as a slipper, but built to take the hard outdoor wear boys give. Moc style toe with brown leather upper, tough non-marking rubber sole, rubber heel. Sturdy sewed construction. Put a pair under the tree for him.

• D (medium wide) width in boys' sizes 3½, 4, 4½, 5, 5½, 6, 6½, 7. *Please state size.* Shipping weight 2 pounds 8 ounces. 67 N 5141—Brown leather . . . . . Pair \$3.69

**J** New "Zig-Zag-Stitched" moc-type vamp, overlaid with a strip of pliant leather. Rich, handsome, "copper-color" leather uppers. Buckle and strap make it smooth fitting, wall toe gives it extra room. Goodyear welt. Husky rubber sole and heel, solid leather insole.

• D (medium wide) width in boys' sizes 3½, 4, 4½, 5, 5½, 6, 6½, 7. *Please state size.* Shipping weight 2 pounds 8 ounces. 67 N 5215—Copper tan leather casuals . . . . . Pair \$5.45



**Moc-style Camper** . . . roomy, flexible. Brown leather uppers, leather tie. Rubber sole, heel.

• D (med. wide) boys' sizes 2, 3, 4, 5, 6. No half sizes. *State size.* Shipping weight 1 lb. 14 oz. 67 N 5090—Dark brown. Pair . . . . . \$2.29

**Handsome leather uppers**, lined with soft, warm shearling. Leather sole, rubber heel.

• Boys' wide sizes 2, 3, 4, 5. No half sizes. *Please state size.* Shipping weight 1 lb. 4 oz. 67 N 5971—Boys' tan. Pair . . . . . \$3.59

**Warm Moc-style Slipper**, with padded sole and heel. Thick, durable brown felt uppers.

• Wide width; boys' sizes 1, 2, 3, 4, 5. No half sizes. *State size.* Shipping wt. 1 lb. 4 oz. 67 N 5982—Brown felt. Pair . . . . . \$1.79

**Two-Tone Moc-style**. Brown and tan suede leather upper, padded sole and heel.

• Boys' sizes 2, 3, 4, 5. Wide width. No half sizes. *State size.* Shipping wt. 1 lb. 4 oz. 67 N 5951—Brown, tan. Pair . . . . . \$1.98

**Zipper Front** . . . soft blue wool, snug as a blanket. Cushioning cloth-covered platform, with flexible leather sole and heel.

• Boys' wide width sizes 2, 3, 4, 5, 6. No half sizes. *State size.* Shpg. wt. 1 lb. 4 oz. 67N5984—Blue. Pair \$2.19

IT'S EASY TO GET  
A PERFECT FIT AT SEARS  
... WE GUARANTEE  
TO SATISFY YOU



**How to Measure for proper clothing size**

**FOR WOMEN**

Measure over slip or lightweight dress.  
**Measure Hips** at fullest part (7 inches below natural waistline). This is an important measurement.  
**Measure Waist** around smallest part.  
**Measure Bust** around body at fullest part of bust. Do not let tape slide down shoulder blades in back.  
**Measure Length** straight down center of back from "bump" at back of neck to hem.



**FOR LITTLE GIRLS**

Children grow so rapidly that it is important to measure carefully each time you order. If measurements come between two sizes, order larger size.  
**Measure Chest or Bust** around body at fullest part of chest or bust. Hold tape snugly, well up over shoulder blades.  
**Measure Height**—Have child remove shoes and stand naturally against wall. Make mark level with top of head. Measure from this point to floor.  
**Measure Hips** in straight line around body at fullest part of hips (about 7 inches below waist).



**FOR MEN**

**Measure Chest** close up under arms, snug but not tight, with tape over shoulder blades at back. Measure with vest on for garments that are worn over vest.  
**Measure Waist** just above hip bones at natural waistline. Remove belt.  
**Measure Inseam** from close up in crotch to bottom of trousers at length desired, usually top of heels.



**FOR BOYS**

Measure chest around body over shirt well up under arms. Measure waist around body over trousers without belt. Measure leg inseam from crotch to desired length.



Height in Inches	Chest in Inches	Waist in Inches	Inseam in Inches	Order Size
34 to 37	21 to 22	20 to 22	.....	3
37 to 40	22 to 23	21 to 23	.....	4
40 to 43	23 to 24	21 1/2 to 23 1/2	.....	5
43 to 46	24 to 25	22 to 24	19	6
46 to 48	25 to 25 1/2	22 1/2 to 24 1/2	20 1/2	7
48 to 50	25 1/2 to 26 1/2	23 to 25	21 to 22	8
50 to 52	26 1/2 to 27 1/2	23 1/2 to 25 1/2	23 to 24	9
52 to 54	27 1/2 to 28	24 to 26	24 to 25	10
54 to 56	28 to 29	24 1/2 to 26 1/2	24 to 26	11
56 to 58	29 to 29 1/2	25 to 27	25 to 27	12
58 to 59 1/2	29 1/2 to 30 1/2	25 1/2 to 27 1/2	26 to 28	13
59 1/2 to 61	30 1/2 to 31 1/2	26 to 28	27 to 29	14
61 to 62 1/2	31 1/2 to 32 1/2	26 1/2 to 28 1/2	27 to 29 1/2	15
62 1/2 to 64	32 1/2 to 33	27 to 29	28 to 30	16
64 to 65	33 to 33 1/2	27 1/2 to 30	29 to 31	17
65 to 66	33 1/2 to 34 1/2	28 to 31	30 to 32	18

**Size Scale for Children's Mittens**

Place tape around hand, over knuckles, excluding thumb. Close fist; measure. Number of inches is size.  
If hand measures 5 to 6 inches, order size **Small**  
If hand measures 6 to 7 inches, order size **Medium**  
If hand measures 7 to 8 inches, order size **Large**



**3 WAYS TO ORDER YOUR CORRECT SHOE SIZE**

**1 Tell us your shoe size . . . length and width . . . if you know it**  
For men and women only—not for children. (For children, use 4-point measuring system.) Make sure that shoes you order are sold in your particular size and width. If you have worn a particular size or type of shoe comfortably, you will certainly find it satisfactory and convenient to order the same size in your new shoes.

**or 2 Give us all numbers in your shoe**  
For men and women only—not for children. Just write on your order all the numbers and marks you find in the lining of a comfortable old shoe . . . whether you bought it at Sears or not . . . and your new Sears shoes will fit just as comfortably. Be sure to include any dashes that occur, as they sometimes indicate half sizes.

**or 3 Use Sears Scientific 4-point measuring system**



For men, women, older boys, girls and children . . . Take a piece of blank paper large enough to fit under your foot . . . an ordinary kitchen knife . . . and a sharp pencil. Sit on a chair and let the foot which gives you the most trouble rest naturally and without moving on the piece of paper as shown. Do not stand as this will spread the foot and result in an incorrect measurement. Our measurements allow for normal spread of foot when standing. Mark this piece of paper as shown in the four illustrations below.



Have someone else hold the knife straight up and down at the tip of your longest toe as shown in Point Number 1 above, and make a mark with the pencil along the outside edge of the point of the knife.

Have knife blade moved to the joint of the inside of the foot (widest part), as shown in Point Number 2 above, and again make a mark with the pencil along the outside edge of the blade.



Next, have the knife blade placed at back of the heel, as shown in Point Number 3 above, and make another mark along the outside edge of the blade. Be sure that the knife is held straight up and down.

And last, have knife blade placed at widest part of the outside of your foot, as shown in Point Number 4. This gives us your exact foot measurement so do not send us pencil outlines of your foot.

You now will have a piece of paper with four pencil marks on it as shown at the right. Enclose this piece of paper with your order blank (if ordering more than one pair, send diagram for each with catalog number noted). Sears 4-Point Foot Measurement gives us all the information we need to determine your correct shoe size.



For Children's Shoes measure each time you order

**New measuring device now Free for the asking!**

Very easy to use in getting exact size measurement for children only. Simple and complete instructions are printed right on device. Send for one today—use it again and again to determine correct size before ordering your children's shoes. Ask for number F13818N.

# Trappers!

... It pays  
to ship your furs  
to Sears Raw Fur  
Marketing Service

*Let us help you get  
more money for your furs  
... put a Sears tag  
on all your fur shipments*

More and more of America's trappers look to Sears to get them every cent their furs are worth. They know from experience that shipping to Sears means bigger fur profits. Why not let Sears get you top prices for your furs, too?

When you ship your furs to Sears you get individual and localized grading. Your pelts are carefully and honestly graded by experts especially trained in handling furs from your section of the country. And you get prompt cash returns. Your shipment is handled and marketed in a way we believe nets you the highest prices—and a check for the full amount obtained for your furs is mailed to you within 24 hours after your shipment reaches us.

## Sears Special Shopping Service for Fur Shippers

In Sears big general catalog and this special Christmas book, you'll find a great many things you want for yourself and for gifts. Just attach your order to your next fur shipment and take advantage of Sears low prices on the things you need. We'll deduct an amount to cover the order from the proceeds of your fur shipment. It pays to do all your shopping at Sears.

### SEARS, ROEBUCK AND CO., Chicago 7, Illinois

Please mail me free fur shipping tags and latest edition of "Tips to Trappers," CMN241N, which contains full details of your Raw Fur Marketing Service and rules governing the 19th National Fur Show.

PLEASE PRINT NAME AND ADDRESS PLAINLY

Name \_\_\_\_\_

Rural Route \_\_\_\_\_ Box No. \_\_\_\_\_

Street Address \_\_\_\_\_

Postoffice \_\_\_\_\_

State \_\_\_\_\_

260 . . SEARS, ROEBUCK AND CO. CMN



## Sears 19th National Fur Show offers \$7,590.00 in Cash Awards for careful pelt handling

Sears has found that properly handled pelts bring the trapper consistently higher prices. To encourage greater care in pelt handling, Sears offers \$7,590.00 in cash awards to fur shippers during the period of the 19th National Fur Show.

Every trapper who ships his pelts to Sears Raw Fur Marketing Service has an opportunity to share in the cash awards. There are 942 awards in all, including 918 daily awards. The first major award is \$1,000.00. Every one of these cash awards is for careful pelt handling and is in addition to the top market price we get you for your furs. Remember that all awards are extra—only handling counts—not kind or value of skin. This gives every shipper an equal opportunity. It pays to ship all your furs to Sears Raw Fur Marketing Service.



## FREE! Tips to Trappers Booklet

This valuable booklet "Tips to Trappers" tells you all about Sears nation-wide fur marketing service and how you can get top prices for your furs. It's packed with helpful tips on trapping, skinning and preparing pelts. It contains the rules and full details of the big 19th National Fur Show . . . with hints that may help you share in the EXTRA cash awards. Every trapper and fur shipper should have a copy of this free booklet. Send for your copy today!



# Starting Right Here!

Latest merchandise news . . . attractive values available just in time to get into this Big Christmas Catalog



## Poplin, Gabardine Casuals

- A** Unlined Cotton Poplin Jacket. Tightly woven for wind-resistance and long wear. Water repellent. Zipper front. Adjustable waist straps. Sport back. Average length 25½ inches. **\$3.49** Sizes chest, 34, 36, 38, 40, 42, 44, 46, 48 inches. Please state size. Shipping weight 2 pounds. 41 N 5130—Putty gray . . . . . \$3.49
- B** Lined cotton Poplin. Bright cotton plaid lining in body, cotton kasha in sleeves. Warmer, dressier than jacket above. Zelan-treated for durable water-repellency. Zip closing, 2 slash pockets. Sports back with half belt. Adjustable cuffs. Average length 25½ in. Sizes chest, 34, 36, 38, 40, 42, 44, 46 in. State size. Shpg. wt. 2 lbs. 8 oz. 41 N 5131—Cocoa brown . . . . . \$5.79
- C** Superb Cotton Gabardine—2-ply, combed cotton. Handsome appearance, strong, durable. Specially water-repellent treated. Lining is rich rayon, easy to slip on and off with quilted interlining to keep you comfortably warm. Slash pockets and zip cigarette pocket, turn-up cuffs, stitched down half belt with sport tucks. Zipper. Average length 27 inches. Sizes chest 34, 36, 38, 40, 42, 44, 46 and 48 inches. Please state size. See How to Measure below. Shpg. wt. 3 lbs. 6 oz. 41 N 5138—Cocoa (dark) tan. 41 N 5139—Seal (dark) brown . . . . . \$10.75

*How to Measure for Jackets:* Pass tape around body, over chest and well up over shoulder blades in back. Measure over garments usually worn underneath, snug but not tight. Number of inches is your size.



## Hercules Leather Jackets are ideal Christmas Gifts

**Capeskin.** Tanned smooth-grained leather. Full rayon lining for easy on and off. Zipper front. Adjustable waist straps with metal buckles. Stitched-down belt in back. Set-in sleeves; stitched-on cuffs have extension bands. Two slash pockets and one large diagonal zipper pocket. Length 25½ in. Sizes chest 34, 36, 38, 40, 42, 44, 46 and 48 in. State size. 41 N 5662—Brown. Shpg. wt. 3 lbs. 8 oz. **\$13.95**

**Horsehide.** Longest wearing leather, lined with colorful cotton plaid. Slash pockets with cigarette pocket. Double leather collar. Top half cuffs with 2-buttons, knit wristlets inside cuffs. Stitched-down half belt with sport tucks above. Side gussets with adjustable waist straps. Length 25½ inches. Sizes chest 34, 36, 38, 40, 42, 44, 46 and 48 inches. Please state size. 41 N 623—Brown. Shpg. wt. 4 lbs. 5 oz. **\$18.95**



## 100% Virgin Wool Jackets in extra husky 24-oz. weight

**Big Buffalo Checks.** Where will you see as much for your gift money as right here . . . with a Hercules label? Soft, warm, lightly brushed, 100% virgin wool, water-repellent; 24-oz. weight is extra comfortable and durable. Double-thick collar, set-in coat sleeves. Chest pockets. Unlined with finished seams. Average length, 29 in. Get one for "her," too. Men's chest sizes 34, 36, 38, 40, 42, 44 and 46 in. State size. Shipping weight 3 lbs. 8 oz. 41 N 6111—Red and black 41 N 6112—White and black 41 N 6113—Brown and white . . . . . \$6.98

**Zip front on plaids and scarlet.** Beautiful fabric! . . . lively, long-wearing, slightly napped, water-repellent 100% virgin wool in a husky 24-oz. weight. Bright, clear coloring . . . plus smooth zipper and tricky new pockets with 2-button flaps. Practical for school, leisure or job . . . and an ideal gift. Double-thick collar has shape-retaining stitching; set-in coat sleeves. Unlined with neatly finished seams. Average length 29 in. State chest size 34, 36, 38, 40, 42, 44 in. 41 N 6137—Brown and white. Shpg. wt. 3 lbs. 8 oz. 41 N 6138—Black and white. Shpg. wt. 3 lbs. 8 oz. 41 N 6139—Scarlet. Shpg. wt. 3 lbs. 8 oz. . . . \$7.79