

Boutique

1 For Night—Rich Imports

BEADED BAG FROM INDIA. Black cotton, rich hand-trimmed beading. Foldover flap, snap closing.
19 J 8398. 8x5-in. high. (8 oz.).....16.00

HANDSEWN GLOVES. Doublewoven cotton; Black, Gold beading. Sizes to fit 6, 6½, 7, 7½, 8-in. hand.
19 J 8725. 15-in. long. State size. (4 oz.).....7.50

SILK CHIFFON SCARF. Hand rolled hem.
19 J 9443. Imported. 30-in. sq. Green. (2 oz.)...1.00

INSPIRED EVENING JEWELRY By Vogue. Hand-cut Austrian rhinestones, simulated Cultra pearls, simulated emeralds. Yellow Gold plate metal.
54 J 9866. Adjustable Necklace. (5 oz.).....8.95
54 J 9868. Matching Bracelet. (5 oz.).....4.95
54 J 9867. Drop clip earrings. (5 oz.).....5.95

10% Federal Excise Tax Incl. Where Applicable



1



3

2 For Day—Bronze

LUSTER CALF BAG. Zipper pocket, rayon lining. 12x5-in. Bronze, Moss Green (dk.). State color.
19 J 8386. (1 lb. 5 oz.)....16.00

9-IN. CAPEKIN GLOVES. Imported leather. Sizes to fit 6, 6½, 7, 7½, 8, 8½-in. hand. Beige.
19 J 8724. State size. (3 oz.)...5.00

VEILED HAT. Rayon velvet with satin. Fits all head sizes. Brown, Black or Red. State color.
19 J 9417. (8 oz.).....8.50

IMPORTED FRENCH SCARF. Rayon satin in Beige with Brown.
19 J 9446. 45x12-in. (3 oz.)...3.00

TAPERED PUMP in finest calf. Leather lined, leather sole. 3-in. heel. Women's Sizes: 5, 5½, 6, 6½, 7, 7½, 8, 8½, 9. Narrow width (AA), Med. width (B). (1 lb. 10 oz.).
14 J 5001. BRONZE.
14 J 5002. MOSS GREEN.
State size, width.....8.95

"COROLITE" JEWELRY. Lightweight... Gold-plated. Clamp-back earrings; safety-catch bracelet.

54 J 9861. Bracelet. (5 oz.)...4.95
54 J 9860. Earrings. (5 oz.)...2.95

3 For Anytime!

WOOL FELT CLUTCH. Mad, mad whimsy in original design by Laura Jean Allen, Inc. "Gold" frame, clear plastic lining. Purple with Green contrast, bead trim.
19 J 8391. 13x5-in. (9 oz.)...12.50

FANTASTIQUE CONTOUR BELT. Gay as a hit musical in Purple and Green wool felt; bead sketches. Snap closing, leather lined. 2 in. wide. Waist sizes: 24, 26, 28-in.
19 J 8520. State size. (4 oz.)...4.50

FINE FEATHERED HAT. Just soft leathers, clip style. Fits all head sizes. Plastic hat box incl. Green, Black or White. (8 oz.)
19 J 9418. State color.....9.50

ASCOT NECK SCARF. Doubled Green rayon satin; attached fabric flower. 45x5-in. wide.
19 J 9445. (4 oz.).....4.00

BAROQUE JEWELRY by Vogue. Mauve beads with delicate filigree Gold-color ball spacers. Necklace, bracelet adjust. Clamp earrings; Yellow Gold plate trim.
54 J 9863. Necklace. (5 oz.)...7.95
54 J 9864. Earrings. (5 oz.)...2.95
54 J 9865. Bracelet. (5 oz.)...4.95



2



Shirts of Full Color...Today's Look!

Rich solids or fascinating checks in fashion shades...in the collar and cuff models he favors!

TV HANDKERCHIEF . . . by Fruit of the Loom! Combed, mercerized cotton. Embroidered, edged in contrast.

44 J 4130. Colors shown. (6 oz.) Box of 3 for 1.50

ALL DACRON TIE . . . washable! Nylon-stitched! 44 J 4605. Abt. 50 in. long. Maroon. (5 oz.) 1.00

"SWANK" HORSEHEAD LINKS, TIE BAR . . . 22K yellow gold plate metal; Mother of Pearl inlay. Slide tie bar. 54 J 2285. Ppd. Fed. excise tax incl. 3-pc. set 6.60

REGULAR POINT OR ROUNDED COLLARS!



Oxford cloth, . . . fashion favorite in fashion shades! Trimbasket-woven combed cotton . . . silky, sturdy, ventilating to keep him well dressed! Washfast, sunfast, Sanforized.

Rounded button-down collar (shown) . . . the latest! French front; button cuffs. Mint Green or Pink. State neck size, sleeve length at right, color. 42 J 2050. (1 lb. 3 oz.) Boxed 2.98

Regular-point button-down collar (not shown). Box-pleat front; button cuffs. White or Lt. Blue. State neck size, sleeve length, facing page; color. 42 J 2052. (1 lb. 3 oz.) Boxed 2.98

SAVE EVEN MORE ON ANY 2! (2 lbs. 5 oz.) . . . 2 for 5.94

SILK REPP TIE, wool lined. Color shown. 44 J 4603. Abt. 50 in. long. (4 oz.) 1.50

FASHION CHECKS!



Subtle tones woven-in forever! Give him the latest this holiday . . . yet pay so very little! Same shirt costs you \$5 elsewhere! Carefully combed, mercerized cotton broadcloth, extra soft and lustrous, extra strong and finely tailored! Sanforized for good fit. Semi-spread slotted collar, removable stays. Button cuffs; French front. Boxed.

Colors: Blue or Tan., each on White. State neck size, sleeve length, facing page; color. (1 lb. 3 oz.) 42 J 2012 3.98 (2 lbs. 5 oz.) 2 for 7.94 RAYON CROCHET tie, shown. 50 in. long. 44 J 4602. (4 oz.) 1.00

FRENCH OR BUTTON CUFFS!



Handsome pastels to spark his wardrobe this Yuletide Season . . . and it's definitely the fashion! Order his in lustrous high-count cotton broadcloth . . . Sanforized, washfast and combed for a rich, lasting luster, for lasting color and fine fit! Mercerized for added strength and sheen. Semi-spread slotted collar has removable stays; French-style front is easy to iron! Tapered body construction. Boxed.

Button cuffs. Pink, Mint Green, Maize. State neck size, sleeve length, at right; color. 42 J 2004. (1 lb. 3 oz.) 2.98 French cuffs . . . (links not incl.) Colors: Pink or Mint Green only. State neck size, sleeve length, facing page; color. 42 J 2005. (1 lb. 3 oz.) 2.98 ANY 2! (2 lbs. 5 oz.) 2 for 5.94 STRIPED WOVEN RAYON TIE . . . wool lined, nylon stitched. Color shown. (4 oz.) 44 J 4604. Abt. 50 in. long 1.50



Budget Power protects peace of mind with free Prudential Life Insurance

(A)
Regular-point
Collar Style



(B)
Short Rounded
Button-down Collar

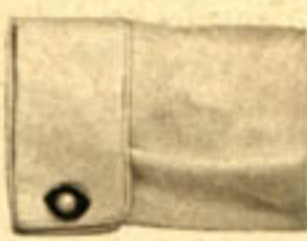


(C)
Semi-spread
Collar Style



(D) Short-point
Collar Style

(E) Spread
Collar Style



THE CUFF STORY . . .

BUTTON CUFFS, at left. Round-cornered barrel cuffs. Neat single-button closing.

FRENCH CUFFS, right. Square-cornered double cuff. Require cuff links (not included).



White Shirts for a Truly Wonderful White Christmas!

He needs new shirts . . . and he'll be so pleased with these! His favorite collar and cuff styles . . . all with tapered bodies; French fronts! All easy to care for, all priced so low!

DOUBLE WEAR!

Collars and cuffs **2.75** each guaranteed not to fray through long life of shirt! Fortified by super-strong 2-ply cotton fabric. Body of shirt is high-count cotton broadcloth, mercerized, Sanforized! White. Boxed.

- (A) Regular-point fused collar.** Button cuffs. State neck size, sleeve length, right. 42 J 2021. (1 lb. 3 oz.) . . . 2.89
- (C) Semi-spread slotted collar.** Button cuffs. State neck size, sleeve length, right. 42 J 2022. (1 lb. 3 oz.) . . . 2.89
- (D) Short-point fused collar.** Button cuffs. State neck size, sleeve length, right. 42 J 2030. (1 lb. 3 oz.) . . . 2.89
- (E) Spread slotted collar.** French cuffs (links not incl.) State neck, sleeve size, right. 42 J 2023. (1 lb. 3 oz.) . . . 2.89 (4 lbs. 10 oz.) . . . Any 4 for 11.00

EGYPTIAN COTTON

Fine broadcloth . . . renowned for its **3.95** ea. wear and richness! Cheer him with an imported fabric, yet buy at lowest price we know of anywhere! Loomed of select Egyptian combed, mercerized yarns, Sanforized to assure fit. Collars processed to eliminate shrinkage! Easy-iron French front. White.

- (A) Regular-point fused collar.** Button cuffs. State neck size, sleeve length, right. 42 J 2075. (14 oz.) . . . Boxed 3.95
- (B) Short-rounded button-down collar.** Button cuffs. State neck size, sleeve length, right. 42 J 2077. (14 oz.) . . . Boxed 3.95
- (C) Semi-spread slotted collar.** French cuffs (links not included). State neck size, sleeve length, right. 42 J 2076. (14 oz.) . . . Boxed 3.95 ANY 2! (1 lb. 9 oz.) . . . 2 for 7.80

OUR BEST BROADCLOTH

Fine 2-ply Egyptian cotton yarns! Superior because double threads are stronger; high-count yarns combed, mercerized for luster; Sanforized! Ocean pearl buttons; single needle sleeves. **4.95** ea.

- (A) Regular slotted collar.** Button cuffs. White. State neck size, sleeve length below. Boxed. 42 J 2073. (1 lb. 3 oz.) . . . 4.95
- (C) Semi-spread slotted collar.** French cuffs (links not incl.). White. State neck size and sleeve length below. Boxed. 42 J 2069. (1 lb. 3 oz.) . . . 4.95 (2 lbs. 5 oz.) . . . Any 2 for 9.80

SUPERB BLEND!

It's dacron and fine Egyptian cotton . . . **5.75** ea. yes, the finest dacron and cotton dress-shirt fabric we know of! What an elegant gift . . . yet so "down-to-earth" practical! Just wash, dry and wear. Dries in a single hour! Needs little or no ironing! Specially processed fused collar won't curl . . . needs no starch! Easy-iron French front. White. Boxed.

- (A) Regular-point fused collar.** Button cuffs. State neck size, sleeve length below. 42 J 2014. (1 lb. 3 oz.) . . . 5.75 (2 lbs. 5 oz.) 2 for 11.00

FOR SLEEVE-LENGTH

If neck size is	14	14 1/2	15	15 1/2	16	16 1/2	17
Then sleeves are furnished in the following lengths.	32	32	32	32	32	33	33
	33	33	33	33	33	34	34
		34	34	34	34	34	34
			35	35	35	35	35

See Page 287 for Spiegel Budget Power . . . a better way to better living



Fleecy Flannels . . .

To Warm His Heart . . .



1 "Italia" Flannel 2.98



NEW WASH AND WEAR!
NO-IRON
2 New Geometrical
Only 2.98 each



3 Cotton, Dacron! 2.98



4 Black Plaid 2.39



5 Brilliant Haze 2.39



6 Shadow Plaid 2.39

SO SOFT, SO WARM . . . COTTON SUEDE FLANNELS IN FASCINATING COLOR!



7 55% Wool with Vicara, Nylon 3.98



8 85% Wool with Nylon 7.98



9 65% Orlon Plus Wool 7.98

WARM, WONDERFUL, WASHABLE . . . LUXURY WOOLS—WONDER FIBERS!

Budget Power . . . like having an extra month's pay for Christmas shopping



All In Rollicking Washable Patterns!

Soft, warm, long-wearing . . .
so low priced! He'll love you
for choosing this perfect gift!

1 CONTINENTAL INSPIRATION . . .
today's Italian-cut rolled collar
boasts special flexitizer construction . . .
to hold it as he shapes it; looks smart
open or closed! Snug medium weight
cotton suede flannel to keep him warm!
Rounded collar. Washable. Sanforized!
Charcoal Gray (dk.), Med. Blue or Red.
State size below, color.
47 J 6569. (1 lb. 2 oz.) 2.98
SAVE on 2. (2 lbs. 3 oz.) 2 for 5.90

2 AMAZING NEW NO-IRON cotton
suede flannel . . . saves hours of
time! Just wash it, hang it, wear again!
Crease-resistant for trim grooming the
day long! Latest rounded collar; in-out
bottom. Pre-shrunk; washable. New Fall
prints in Venetian Blue, Pink or Ivy.
State size below, color.
47 J 6570. (1 lb. 2 oz.) 2.98
SAVE on 2. (2 lbs. 3 oz.) 2 for 5.90

3 COTTON AND DACRON—a med.
heavy suede flannel! Extras for his
Christmas . . . longer wear, extra
easy care! Washable, Sanforized for
permanent fit! Rounded collar; rayon
satin yoke. Modern Harlequin stripe
print in Pink, Gray or Mint Green, ea.
with Black. State size below, color.
47 J 6523. (1 lb. 2 oz.) 2.98
SAVE on 2. (2 lbs. 3 oz.) 2 for 5.90

4 thru **6** A GALAXY of colorful
prints, bound to make wel-
come gifts. All in fine med. heavy cotton
suede flannel! All have rounded collars;
rayon satin yokes. All washable. San-
forized for good fit! See sizes below.

4 Block Plaid: Mint, Pink or Orange,
ea. with Black. (1 lb. 2 oz.)
47 J 6516. State size, color 2.39

5 Brilliant Haze: Orange, Gold or
Mint Green. (1 lb. 2 oz.)
47 J 6512. State size, color 2.39

6 Shadow Plaid: Gold, White or Red,
ea. with Black. (1 lb. 2 oz.)
47 J 6594. State size, color 2.39
2 of 1 style. (2 lbs. 3 oz.) 2 for 4.75

7 thru **9** WONDER-BLEND flannels.
Miracle fibers added to
fleecy-warm wool! Luxurious gifts . . .
all completely washable, quick drying,
so soft, so warm! All designed to give
him years of cheer! In-out bottoms.
See sizes below.

7 55% Wool, 25% Vicara, 20% Nylon
. . . warm wool blended with vicara
for softness, nylon for wear, easy care!
Vibrant woven shades of Black with Blue
or Brown with Gold. (1 lb. 9 oz.)
47 J 6573. State size, color 3.98
SAVE on 2! (3 lbs.) 2 for 7.90

8 Luxurious 85% Wool, 15% Nylon
. . . soft fluffy wool, with nylon added
for strength, dry-ability! Costly pick-
stitch trim; Ocean pearl buttons. Rich
Fall colors: Lt. Blue, Natural or Mint
Green. (1 lb. 5 oz.)
47 J 6580. State size, color 7.98
SAVE on 2! (2 lbs. 9 oz.) 2 for 15.90

9 65% Orlon, 35% Wool . . . doe-
soft and warm, extra sturdy! Wrin-
kles hang out, washes easily, dries quick-
ly! Rayon satin yoke. Charcoal Gray,
Pink or Brown comb. (1 lb. 7 oz.)
47 J 6578. State size, color 7.98
Save on 2! (2 lbs. 13 oz.) 2 for 15.90

SIZES FOR SHIRTS ABOVE
Small (fits 14-14½ in. neck); Med. (15-
15½); Large (16-16½); X-Large (17-17½).



10 11 Finer Med. Heavy Cotton Suede Flannel 2.95 each



12 13 Med. Heavy Cotton Suede Flannel 1.99 each



FRUIT OF THE LOOM—YOUR ASSURANCE OF FINE QUALITY!

A respected mark of exceptional value since 1865! These washable Sanforized cotton suede flannel shirts are cut, stitched and finished according to the most rigid Fruit of the Loom standards! And, like all Spiegel shirts, they are guaranteed to give you complete satisfaction!

10 11 DELUXE IN EVERY WAY . . . finer cotton suede flannel, gala permanent prints. Med. heavy for comfort; Sanforized, washable for easiest care! Rounded collars; rayon satin yokes.

10 THE DIMINISHING STRIPE . . . gay and so bright! Lt. Gray, Lt. Blue or California Orange (bright). (1 lb. 2 oz.)
47 J 6517. State size left, color 2.95

11 STARTLING BLACK . . . set off by pastel splashes. Pink, Mint Green (lt.) or Gold, each with Black. (1 lb. 2 oz.)
47 J 6518. State size left, color 2.95

12 13 QUALITY COTTON suede flannels, med-heavy to keep HIM warm! Both washable and Sanforized to make laundering a breeze! Lined rounded collars; double yokes.

12 SENSATIONAL PASTELS: the latest in soft mottled tones. Colors: Light Blue, Pink or Gold. (1 lb. 2 oz.)
47 J 6519. State size left, color 1.99

13 SPORTY BOX PLAID . . . to spark up his Christmas and all year 'round! Med. Blue, Green or Red plaid. (1 lb. 2 oz.)
47 J 6520. State size left, color 1.99

See Page 287 for Spiegel Budget Power Plan . . . have more, enjoy more





① Fibrene with Viscose Challis 2.88



④ Silk-embroidered Rayon Challis 2.98



③ The Continental Rayon! Also in Mint and Black! 2.98



② No-iron Black Watch! Also in Brown Watch 3.98



⑤ Smart Rayon Challis, Also in Tan Comb. 3.98

Sport Shirts

WITH A BRILLIANT TOUCH OF COLOR!

① TEXTURED LOOK OF BEAUTY!

Fibrene spiced all viscose rayon challis—news in color, the latest in style, most favored gift he'll receive! And so wonderfully washable, preshrunk for lasting fit! Distinctively piped at collar, pocket. Pink with Black trim; Black with Pink or Copen Blue with Navy. Sizes: Sm. (14-14½ in. neck); Med. (15-15½); Lg. (16-16½); X-Lg. (17-17½). (1 lb.)
42 J 2465. State size, color.....2.88
SAVE on 2. (1 lb. 15 oz.).....2 for 5.75

③ FIRST IN FASHION!

Introducing a newcomer to men's fashions . . . the casual Italian-styled sport shirt that's been Americanized for him! Exciting new difference is in the shape of the collar, the slub of the fabric, the fascinating color combinations you see! Lustrous all viscose rayon's slub-texture takes its color from solid-toned Italia collar. He'll roll wide-winging collar open, or close as he desires for a different look! What an attraction 'neath his Christmas tree . . . and what a low price for you to pay . . . order several now! Long sleeved sport shirt has 2-button adjustable cuffs; inner-outer bottom. Wonderfully washable, of course.
Colors: Red with Black (shown) or Mint Green (It) with Black. Sizes: Small (fits 14-14½ inch neck); Medium (15-15½); Large (16-16½); Extra-Large (17-17½). Shipping weight 1 lb.
42 J 2490. State size, color.....2.98
SAVE on 2. (1 lb. 15 oz.).....2 for 5.95

④ PURE SILK EMBROIDERY

Truly elegant combination! The latest tones of viscose rayon challis, sharply in contrast against a Spiegel original design, embroidered in rich all silk! Shirt is as handsome as it is priced low! Spread collar. Washable.
Tangerine, Mint Green or Charcoal Gray. Sizes: Sm. (14-14½ in. neck); Med. (15-15½); Lg. (16-16½); X-Lg. (17-17½). (1 lb. 2 oz.)
42 J 2466. State size, color.....2.98
SAVE on 2. (2 lbs. 2 oz.).....2 for 5.95

② NEWEST NO-IRON COTTON!

In the latest Black Watch Tartan Plaid . . . what a combination! Now a fine smooth-finish cotton that needs little or no ironing . . . plus most popular new plaid of the season! Completely washable . . . priced wonderfully low! New smaller sports collar.
Black watch (shown); Brown watch. Sizes: Sm. (14-14½ in. neck); Med. (15-15½); Lg. (16-16½); X-Lg. (17-17½). (1 lb.)
42 J 2458. State size, color.....3.98
SAVE on 2. (1 lb. 15 oz.).....2 for 7.95

⑤ STRIKING ARGYLE PRINT

Popular pattern . . . popular pullover style! 100% viscose rayon in season's latest colors, . . . sparkling argyle print front, is gabardine; solid toned back and sleeves are rich challis, just to be different! Lustrous durene cotton knit at waist, trim. Self buttons. Washable.
Colors: Charcoal Gray (shown) or Tan Combinations. Sizes: Small (14-14½ in. neck); Med. (15-15½); Large (16-16½). (1 lb. 8 oz.)
42 J 2432. State size, color.....3.98
SAVE on 2. (2 lbs. 13 oz.).....2 for 7.95



⑥ Silk-monogrammed Rayon Challis 3.98



⑨ Washable Corduroy 3.98



⑦ Egyptian Cotton and Silk Also in New Mint Green 7.95

⑧ Cotton Shirt 3.85 Orlon Sweater 3.85 The Set 7.50

Sport Shirts



⑩ No-iron Continental Also in Brown Comb. 4.98

WITH A REGAL AIR OF LUXURY!

⑥ SILK-EMBROIDERED INITIALS

A superb challis, blended of fine viscose rayon plus wonder dacron! Pick-stitched at collar, pocket! Washable! When shirt arrives, mail enclosed envelope. Detachable pocket flap will be monogrammed and returned to you free! Ice Blue, Cognac or Charcoal Gray. Sizes: Sm. (14-14½ in. neck); Med. (15-15½); Lg. (16-16½); X-Lg. (17-17½). (1 lb. 8 oz.)
42 J 2471. State size, color.....Boxed 3.98
SAVE on 2. (2 lbs. 13 oz.).....2 for 7.95

⑦ IMPORTED COTTON WITH SILK!

Supreme seamanship, superb fabric . . . very same shirt sells elsewhere for \$13.95. Fine Egyptian cotton yarns, skillfully blended with the luxury of pure silk in a delightful woven plaid! Sure to please this Xmas, and all year! Finer single-needle sleeves; semi-spread lined collar; ball "pearl" buttons. Washable.
Colors: Blue or Mint Green (lt.) plaid. Sizes: Sm. (14-14½ in. neck); Med. (15-15½); Lg. (16-16½); X-Lg. (17-17½). (1 lb. 8 oz.)
42 J 2435. State size, color.....Boxed 7.95

⑧ SWEATER, SHIRT SET!

Color-coordinated sweater and shirt harmonize to make him the best dressed this holiday season! Both washable!
IMPORTED COTTON SHIRT . . . a rich woven plaid that's permanently bright! Sanforized. Maize, Blue or Red, ea. with Charcoal Gray plaid. Sizes: Sm. (14-14½ in. neck); Med. (15-15½); Lg. (16-16½); X-Lg. (17-17½). State size, color.
CASHMERE-SOFT ORLON SWEATER . . . thick interlock knit for warm comfort! Won't shrink, dries in jiffy, back to shape! Sleeveless pullover has looped-on rounded neck and arm openings. Wash sep. by hand. Charcoal Heather (shown), Lt. Blue or Camel Tan. Sizes: Sm. (34-36 in. chest); Med. (38-40); Lg. (42-44). State size, color.
42 J 2463. Shirt. (1 lb. 8 oz.)... 3.85
42 J 2464. Sweater. (14 oz.).....3.85
Set . . . give his wardrobe a boost . . . save 20¢, besides. (2 lbs. 6 oz.)
42 J 2462. State ea. size, color... 7.50

⑨ WASHABLE CORDUROY!

Newest rainbow tones in the latest horizontal-wale corduroy—distinctively his! Soft, finely-textured fabric, continental colors that stay clear after laundering! Semi-spread collar; rayon satin yoke. Mint Green, Orange, Blue (shown), also Charcoal Gray (dk) or Pink. Sizes: Sm. (14-14½ in. neck); Med. (15-15½); Lg. (16-16½); X-Lg. (17-17½). (1 lb. 3 oz.)
42 J 2427. State size, color..... 3.98
SAVE on 2. (2 lbs. 5 oz.).....2 for 7.95

⑩ WASH 'N' WEAR COTTON

With a Venetian look—in its Italian wide-flung collar, in its Italian horizontal striping! And specially-treated smooth-finish, high-count (160) cotton dries quickly without wrinkles . . . takes little or no ironing! Finer single-needle sleeves. Sanforized.
Gray or Brown combinations. Sizes: Sm. (14-14½ in. neck); Med. (15-15½); Lg. (16-16½); X-Lg. (17-17½). (1 lb. 3 oz.)
42 J 2436. State size, color. Boxed... 4.98
SAVE on 2. (2 lbs. 5 oz.).....2 for 9.95

See Page 287 for Spiegel Budget Power . . . a better way to better living





① 3 for 1.00



② 3 for 1.29



③ 3 for 1.49



④ 3 for 1.98



⑤ low at 3 for 1.09

⑥ Box of 6 for 1.59

⑦ Set 2.98

Handkerchiefs . . .

ALL PRICED JUST RIGHT

① **MONOGRAMMED T.V. FOLD** . . . specially folded in the new, square T. V. manner . . . richly embroidered with his initial, (readable in his pocket)! Designed to give his wardrobe that finishing touch! Fine washfast combed cotton . . . soft, lustrous. Rolled hems. White. Abt. 17 in. sq. State any 1 initial except I, O, Q, U, V, X, Y, Z. (8 oz.)
44 J 4140. Box of 3 for 1.00

② **PASTELS** . . . in today's correct style, the new, smart T. V. square fold! In fashion colors to match his wardrobe! Of wonderfully soft, combed cotton lawn . . . monogrammed for that personal touch, and purled edged in contrast. Abt. 17 in. sq. Vat dyed colors: Pink, Lt. Blue, Maize; one each to box. State any 1 initial except I, O, Q, U, V, X, Y, Z.
44 J 4120. (8 oz.) Box of 3 for 1.29

③ **HAND-PAINTED SPORT SCENES** . . . a wonderful gift idea for your favorite sportsman! Panoramic sport pictures, hand painted on fine quality, Fruit of the Loom combed cotton! Scenes, specially inverted for the popular T. V. square fold! Washfast. Rolled hems. Handsomely gift boxed in 3's. Abt. 17 in. sq. White with multicolor paintings.
44 J 4142. (6 oz.) Box of 3 for 1.49

④ **PURE IRISH LINEN** . . . T. V. square-fold gift handkerchiefs, with all the luxury touches! Generous, full sized . . . of snowy White, lint-free linen! High-count Fruit of the Loom quality—hand finished, embroidered in color, easy to refold after laundering! Gift boxed in 3's. Abt. 18-in. sq. State any 1 initial except I, O, Q, U, V, X, Y, Z.
44 J 4144. (8 oz.) Box of 3 for 1.98

⑤ **INITIALED LINEN** . . . the ideal gift! Lint-free—stay neat, fresh looking longer! Gift boxed for him, in 3's. Abt. 16 in. sq. White. State any one initial except I, O, Q, U, V, X, Y, Z. (8 oz.)
Good Quality.
44 J 4103. 3 for 1.09
Finer quality, appenzel initial.
44 J 4115. 3 for 1.98

⑥ **COMBED COTTON** . . . budget priced for practical gift-giving! Fruit of the Loom fine quality, mercerized for strength and luster! Distinctive appenzel initial, corded stripes. Gift boxed in 6's. About 17 in. sq. White. State any one initial except I, O, Q, U, V, X, Y, Z. (6 oz.)
44 J 4119. 6 for 1.59

⑦ **MATCHING SET** . . . White Fruit of the Loom mercerized combed cotton, colorfully embroidered to match Black and Silver colored cuff links, tie bar! Square T. V. fold handkerchiefs, rolled hems. Washfast. Abt. 17 in. sq. Gift boxed in sets of 3 handkerchiefs; cuff links and tie bar. Shpg. wt. 9 oz.
44 J 4146. Set 2.98

New 'n' Novel Knits!

Variety . . . value! Warm, bright accents for his leisure wear . . . all at right!

⑧ **TURTLE-NECK—COMBED COTTON CASUAL** . . . Fabric-set finished, for minimum shrinkage! Little ironing needed to keep neat! "Scoop-cut" for a smoother, more comfortable fit! Strong, nylon-reinforced rib knit turtle neck; hemmed bottom. Wash separately. Colors: Orange, Forest Green, Pink, Black, White, or Light Blue. (9 oz.)
42 J 2652. State color; sizes below* 1.49
SAVE on 2. (1 lb. 2 oz.) 2 for 2.97

⑨ **JERSEY KNIT, TURTLE NECK** . . . give him a handsome, brightly patterned shirt! Of heavier, absorbent combed cotton . . . requires little ironing! Horizontally striped in gay multi-colored ski pattern, has sturdy nylon-reinforced neck. Wash separately. Charcoal Gray or Blue. (9 oz.)
42 J 2607. State color; sizes below* 2.49
GIVE 2, Save. (1 lb. 2 oz.) 2 for 4.97

⑩ **CONTINENTAL KNIT** . . . wide-spread Italian collar, in contrast-color . . . offsets lustrous combed cotton shirt! Certain to please the fashion-minded man . . . looks equally smart when worn open or closed! Easy laundering—shrink control processed, needs little ironing! Washable. Ice Blue and Black; Pink and Charcoal Gray. (9 oz.)
42 J 2608. State color; sizes below* 2.98
SAVE on 2. (1 lb. 2 oz.) 2 for 5.95

⑪ **RAGLAN SLEEVE SWEATSHIRT** . . . comfort cut, action-free—for "every wear"! Heavy-weight cotton, warmly lined with thick cotton fleece. Nylon-reinforced rib knit neck, holds shape! Special process reduces shrinkage, assures lasting fine fit. Wash separately. Colors: Pink, Navy, White (shown) or Red. (15 oz.)
42 J 2699. State color; sizes below* 1.79
GIVE 2, save. (1 lb. 13 oz.) 2 for 3.57

⑫ **JACKET-STYLED SWEATSHIRT** . . . smartly designed for the outdoor man . . . ideal for participating sports! Heavyweight cotton . . . full zipper, nylon-reinforced rib knit collarette, ribbed waist! Fully cotton fleece lined, for added heat-retaining warmth! Contrasting stripes spark collar and cuffs. 2 pockets. Wash separately. Colors: Gold, White or Blue combinations. (15 oz.)
42 J 2638. State color; sizes below* 2.98
SAVE on 2. (1 lb. 13 oz.) 2 for 5.95

⑬ **CASHMERE-LIKE BRUSHED COTTON**, with a special touch of design individuality . . . flying ducks . . . screen printed on chest and point of collar! A gift to treasure . . . he'll love its originality, its super-softness! Washable combed cotton knit; stronger double-ply yarns for double wear! Smart two-button placket to wear open or closed. Colors: Lt. Blue, Maize or Mint Green. (9 oz.)
42 J 2615. State color; sizes below* 2.98
GIVE 2, save. (1 lb. 13 oz.) 2 for 5.95

⑭ **ITALIA-LOOK IN HONEY-COMB KNIT** . . . warm . . . strong, 2-ply combed cotton yarns, in a unique, new knit! A casual slip-over, with wide collar and v-neck inspired by the continent . . . brightly lit with trim contrasting horizontal stripes! Washable, little ironing needed. Colors: Blue with Maize; Orange/Brown; Gray/Black; Mint/Black or Maize/Brown. (9 oz.)
42 J 2680. State color; sizes below* 3.98
SAVE on 2. (1 lb. 13 oz.) 2 for 7.95

⑮ **INSPIRED ORLON—OUR FINEST KNIT!** Distinctive in style . . . brilliant in color! A handsome way to make his a very Merry Christmas! Shirt's high-fashion striped Italian collar matches pocket trim! Of 100% fine virgin orlon, soft as cashmere, yet sturdy and long wearing! Completely washable, drips dry in jiffy time—no ironing needed! Colors: Pink with Black; Mint/Black; Orange/Black or Blue/Black. (9 oz.)
42 J 2681. State color; sizes below* 5.95

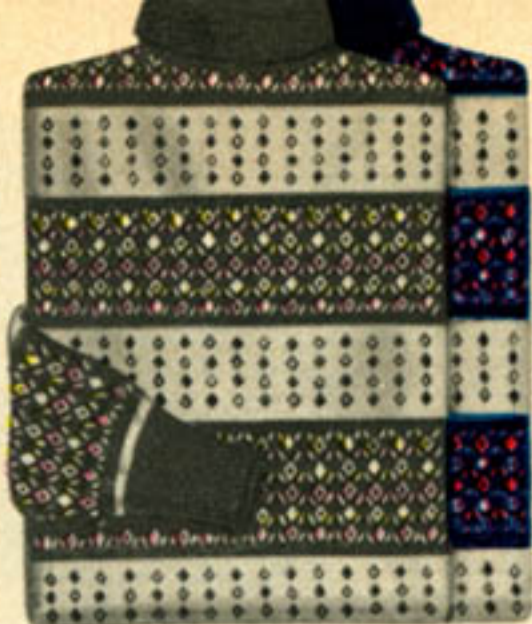
*HOW TO ORDER KNITS: All shirts come in sizes Small (fits 34 to 36 inch chest); Medium (37 to 40) or Large (41 to 44).



Use Budget Power . . . make this the richest Christmas ever at your house



⑧ Shrink-resistant Combed Cotton 1.49



⑨ Ski-patterned Combed Cotton 2.49



⑩ Continental Combed Cotton 2.98



⑪ Sweatshirt, Also in Red 1.79



⑫ Jacket-styled Sweatshirt 2.98



⑬ Flying Ducks! Combed Cotton 2.98

Shirts of Many Colors!



⑭ Colorful Honey-comb Knit Cotton 3.98



⑮ 100% Orlon... Our Finest Knit! 5.95



See Page 287 for Spiegel Budget Power Plan... a wonderful way to buy





ALSO
tall Men
SIZES

1 Reg. Sizes 6.95 Tall Sizes 7.95

2 Sanforized Cotton Suede 4.89

Colorful Robes He'll Treasure . . .

1 FINE RAYON, ACETATE GABARDINE . . . personalized with his press-on initial! Rich solid tones boast contrast piping, self-fabric belt. Dry clean. Charcoal Gray (dk.), Maroon or Navy. See how to order below. State size; color; any 1 initial except I, O, Q, U, V, Y, Z. Boxed. 43 J 3373. (2 lbs. 8 oz.) . . . 6.95

TALL: For 6 footers! Med. (39-42 in. chest); Lg. (43-46). State size; color; 1 init. 43 J 3374. (2 lbs. 11 oz.) . . . 7.95

3 ABSORBENT CANNON TERRY CLOTH . . . a gift he'll enjoy the seasons around! Thickly looped, soft, extremely absorbent cotton, ideal for bath, beach or lounge wear! Such easy care . . . completely washfast . . . never needs ironing! Wide shawl collar, three patch pockets, all around self-belt. Full cut for wonderful freedom! Colors: Maize, Med. Blue or White. See how to order below. (3 lbs. 8 oz.) 43 J 3306. State size; color . . . 6.95

5 REGAL RAYON . . . FULLY LINED, another fashion first with that "luxury look!" Top-notch tailoring with single needle sleeves. Finer quality lustrous all rayon . . . body has fascinating print with deep contrast in solid tone lining and trim! Shoulder pads are another plus for finer fit. Self-fabric belt. Boxed. Dry clean. Silver (Gray) or Red, each with Black. See how to order below. (3 lbs.) 43 J 3385. State size; color . . . 12.95

7 TARTAN ROBE, MATCHING SLIPPERS . . . just the gift the man in your life will love! And you'll appreciate the practicality too! Wonderfully washable . . . complete set costs less than \$10.00! Fine all viscose rayon, in authentic tartan plaid. Fully comfort-cut—smartly tailored with shawl collar, three pockets, self-belt. Matching slip-on scuffs have rubber soles. Red or Blue Plaid. See how to order below. Shipping weight 2 lbs. 8 oz. 43 J 3326. State size; color . . . 9.95

2 SANFORIZED COTTON FLANNEL robe . . . colorfully printed, warmly napped suede flannel . . . ideal for after bath or lounging! Sanforized, washfast . . . will retain same fine fit . . . permanent bright colors! Smartly tailored with double-thick lined shawl collar, three patch pockets; self-material belt. Full cut to insure comfortable relaxing! Colors: Blue or Red, each with Gray. See how to order below. Shipping weight 2 lbs. 4 oz. 43 J 3308. State size; color . . . 4.89

4 WOOL, VICARA, NYLON flannel . . . completely washable! You've seen this blend in robes selling for far more . . . now, yours for under \$10.00! 55% wool for warmth, plus 25% vicara for extra softness, a more costly look . . . 20% nylon for long hard wear! Custom-like tailoring with lined collar; single-needle pockets; self-belt. Colorful Blue or Red. See how to order below. Boxed. (3 lbs.) 43 J 3351. State size; color . . . 9.95

6 GABARDINE ROBE, SLIPPERS . . . a gift certain to please . . . his own monogrammed robe plus matching rubber sole scuffs! Of washable all viscose rayon with contrast piping. When robe is received, unbutton flap; print three initials desired on attached card. Send both . . . flap will be monogrammed and returned free! Navy, Charcoal Gray (dk.) or Maroon. See how to order below. (2 lbs. 8 oz.) 43 J 3339. State size; color . . . 9.95

8 T. V. LOUNGER . . . Corduroy with a luxury look all its own . . . styled to assure him all the comforts of home! Priced for practical gift-giving, at less than \$10.00! Of soft, smooth pinwale corduroy, richly accented by lustrous acetate satin trim. Fashioned to provide full freedom, with shawl collar, three pockets; all around acetate satin belt. Boxed. Dry clean. Colors: Maroon or Navy. See how to order below. (2 lbs. 2 oz.) 43 J 3315. State size; color . . . 9.95

Set 9.95 Robe 5.98 PJ's 4.98

POPULAR POLKA-DOT . . . lustrous rayon robe and pajamas . . . wonderfully washable! A miracle of lightweight comfort! Budget priced . . . set less than \$10.00!

ROBE: Shawl collar, self-belt. Wash separately. Maroon or Navy, ea. with White. See how to order, right. (2 lbs. 2 oz.) 43 J 3333. State size; color . . . 5.98

PAJAMAS: Coat-style. Boxer-waist pants with adjustable grippers. Wash separately. Maroon or Navy, ea. with White. A (fits 32-36 in. chest); B (37-40); C (41-44); D (45-48). (1 lb. 6 oz.) 43 J 3563. State size; color . . . 4.98

GIVE COMPLETE SET, save over \$1.00. State size; color. 43 J 3332. (3 lbs. 8 oz.) . . . 9.95

HOW TO ORDER ROBES . . . Measure around chest, under arms and over shoulder blades. Measure carefully.

Order size	Small	Medium	Large
If chest measures	34-38 inches	39-42 inches	43-46 inches



3 Cannon Terrycloth 6.95



4 Washable Wonder-blend! 9.95



5 Rayon, Fully Lined! 12.95

Each A Gift of Luxury . . . Each A Tremendous Value!



6 Monogrammed Gabardine Set 9.95

7 Tartan Robe Set 9.95

8 Corduroy T. V. Lounger 9.95

See Page 287 for Spiegel Budget Power Plan . . . increase your buying power





⑧
Top
Quality
Loungers
4.95

⑥
Sport-
style
3.98

⑦
Two-tone
Broadcloth
3.98



⑨ Interlock Knit
Combed Cotton 3.98



⑭ High-count
Broadcloth 3.39



⑩ Flat Knit
Combed Cotton 2.98



⑪ Flannelette
Reg. Sizes 3.39 Tall
Sizes 3.89



⑫ Heavyweight
Flannelette 3.39



⑬ Broadcloth
Reg. Sizes 3.39 Tall
Sizes 3.89

See Page 287 for Spiegel Budget Power... a better way to better living

①
T-Shirt
2.49 Ea.



②
Athletic
Shirt or
③
Brief
1.79 Ea.



④
T-Shirt
1.29 Each
in 3's



⑤
Athletic
Shirt or
⑥
Brief
89¢ Each
in 3's

⑦
T-Shirt
75¢ Each
in 3's



⑧
V-Neck
T-Shirt
89¢ Each
in 3's

⑨
Athletic
Shirt or
⑩
Brief
55¢ Each
in 3's

Helanca 100% NYLON
S-T-R-E-T-C-H-A-B-L-E-S!

Imported COTTON,
20% WONDER DACRON BLEND!

Nylonized SHRINK-
RESISTANT COTTON

① to ③ HELANCA NYLON . . . Lab tests prove actually wears 5 times longer than ordinary underwear fabrics! 100% Helanca nylon is permanently resilient, stretches gently to his exact size, without binding, without pressure! Always remains soft, lustrous! In smooth flat knit. Won't shrink!

① T-SHIRT. Easy fitting, long wearing. Comfort-knit raglan shoulders. Bound neck, hemmed bottom. White. One size fits all from 34 to 46 in. chests. 43 J 3171. Shpg. wt. 6 oz. 2.49

② ATHLETIC SHIRT. Wide-fabric shoulder. Hemmed bottom. White. Fits all sizes from 34 to 46 in. chest. 43 J 3172. Shpg. wt. 4 oz. 1.79
SAVE ON 2. Shpg. wt. 8 oz. 2 for 3.50

③ BRIEF. Elastic waist. Taped seams, bound leg openings. Smooth seamless sides. White. Sizes: A (fits 30 to 36 in. waist) or B (37 to 44 in. waist). 43 J 3173. State size. (4 oz.) 1.79
SAVE ON 2. (8 oz.) 2 for 3.50

④ to ⑥ EGYPTIAN COTTON, DACRON blend . . . imported Egyptian combed yarns, the cream of all cottons, world famous for richness, strength; plus 20% dacron for luxurious softness, extra comfort, wear! Shrink resistant! White.

④ T-SHIRT. Sturdy-weight, flat knit! Taped collar, shoulder. Hemmed bottom, sleeves. Sizes: Small (fits 34-36 in. chest); Med. (37-40); Large (41-44); X-Large (45-46). Lots of 3 only. 43 J 3197. State size. (14 oz.) . . . 3 for 3.87

⑤ ATHLETIC SHIRT. Comfort-cut Swiss rib knit. Bound neck, armholes. Hemmed bottom. Sizes: Small (fits 34-36 in. chest); Med. (37-40); Large (41-44); X-Large (45-46). Lots of 3 only. 43 J 3198. State size. (13 oz.) . . . 3 for 2.67

⑥ BRIEF. 1x1 rib knit. Elastic waist, legs, double crotch. Sizes: Sm. (fits 30-32 in. waist); Med. (33-36); Lg. (37-40); X-Lg. (41-44). Only in 3's. 43 J 3199. State size. (12 oz.) . . . 3 for 2.67

⑦ to ⑩ NYLONIZED COTTON. Shrink resistant combed cotton with nylonized finish for greater wear! Color: White.

⑦ T-SHIRT. Nylon-reinforced neck. Flat-knit. Sm. (fits 34-36 in. chest); Med. (37-40); Lg. (41-44). Only in 3's. 43 J 3083. State size. (1 lb.) 3 for 2.25

⑧ VEE-NECK T-SHIRT. Very versatile . . . won't show beneath open sport collars—is a smart sport shirt, as well! Flat-knit, nylon-reinforced rib knit neck. Sizes: Small (fits 34-36 in. chest); Medium (37-40); Large (41-44). Lots of 3 only. 43 J 3096. State size. (12 oz.) . . . 3 for 2.67

⑨ ATHLETIC SHIRT. Swiss rib knit; bound neck, armholes; built-up shoulders. Sm. (fits 34-36 in. chest); Med. (37-40); Lg. (41-44); X-Lg. (45-46). Only in 3's. 43 J 3085. State size. (1 lb.) 3 for 1.65

⑩ BRIEF. 1x1 rib knit. Sizes: Sm. (fits 30-32 in. waist); Med. (33-36); Lg. (37-40); X-Lg. (41-44). Only in 3's. 43 J 3082. State size. (1 lb.) 3 for 1.65



⑪ 53% DACRON BOXERS . . . Extra sturdy, extra long wearing . . . and so practical because they save dollars in their extra months of wear! Right for "him" because they're finer looking, need little or no ironing! A superior blend of miracle dacron combined with combed cotton in attractive assorted all-over prints. Full cut for maximum comfort. Pre-shrunk. Covered elastic waist; fly front. Even waist sizes: 28 to 44 in. Shpg. wt. 1 lb. 2 oz. 43 J 3121. State size 3 for 2.85
Each. (6 oz.) 98¢

⑫ COTTON MADRAS BOXERS . . . Softer, smoother, finer fabric in assorted popular colors. Extra luxurious quality to make them extra giftworthy! End-on-end yarn-dyed cotton madras—Sanforized for true fit, always! Washfast for permanent fresh color! Full cut for roomy, no-binding comfort. All-around elastic waist; fly front. Ass'd colors to set: Pink, Charcoal Gray (dk.) and Med. Blue. Sold only in sets of 3. State even waist size 28 to 44 in. 43 J 3124. (1 lb. 2 oz.) 3 for 2.94

⑪ 53% Dacron, Plus 47% Combed Cotton 95¢ Each in 3's

⑫ Washfast Cotton Madras 98¢ Each in 3's

Budget Power . . . like having an extra month's pay for Christmas shopping





① Interlock Knit Long Sleeve Pullover 5.85

② Interlock Knit Sleeveless Pullover 3.85



③ Virgin Orlon Sweater-shirt 5.95

ORLON SWEATERS OF MANY COLORS . . . ALL NEW!

"Gifted" wonders . . . look, feel like cashmere . . . so soft, so warm! Easy to care for, easy to pay for, besides! Wash, dry into shape in minimum time!



100% FINE CASHMERE!
THE LUXURY GIFT!

④ Long-sleeve 14.95 Sleeveless 10.95



NYLON AND VICARA!

⑤ Long-sleeve 4.98 Sleeveless 2.98



SPECIAL BUY ORLONS!

⑥ Long-sleeve 3.69 Sleeveless 2.29

Budget Power can bring you more of the good things of life . . . today

A Sweater Is a Warm Gift!

CHOOSE FROM FACING PAGE

① to ③ ORLON MAGIC!
He'll think it's cashmere! Looks so soft, so rich, so costly! And you'll think it's wonderful . . . completely washable, fast drying; won't sag or stretch out of shape, even after countless launderings! What's more orlon's warm as wool, long wearing, non-irritating! Wash separately by hand.

① LONG-SLEEVE PULLOVER . . . fashion's favorite tones in interlock knit virgin orlon. Looped-on neck, arms; transfer knit ribbed bottom. Colors: Mint Green; Lt. Blue; Pink; Charcoal Heather; Camel Tan or Cranberry. (1 lb. 2 oz.)
46 J 5900. See size chart below. . . . **5.85**

② SLEEVELESS PULLOVER . . . in fascinating new shades! Interlock knit to hold body warmth. Looped-on neck, arms. Lt. Blue; Charcoal Heather; Pink; Mint Green; Cranberry or Camel Tan. See pg. 10 for Black Watch shirt shown!
46 J 5901. See sizes below. (14 oz.) . . . **3.85**

③ NEWS—THE SWEATER-SHIRT . . . he'll praise its casual fit, its "first-in-fashion" styling! All virgin orlon in a fine-gauge jersey knit, ribbed at transfer-knit cuffs, at new polo shirt collar. Contrast piped for collar interest. Charcoal Gray, Maize or Lt. Blue; ea. with White trim. (1 lb. 2 oz.)
46 J 5906. See size chart below. . . . **5.95**

④ IMPORTED CASHMERE!
A sensational special buy price for the fabulous luxury of 100% virgin cashmere. Soft, warm, with a gentle hand! Wonderful wearing . . . a gift he'll long remember! Extra fine gauge knit; V-neck styling. Wash separately by hand. Gray or Tan Heather.

LONG-SLEEVE pullover. Ribbed transfer knit waist, cuffs. (1 lb.)
46 J 5951. See size chart below . . . **14.95**

SLEEVELESS pullover. Smooth ribbed transfer knit waist. (10 oz.)
46 J 5950. See size chart below . . . **10.95**

⑤ NYLON, VICARA WONDER
Today's "miracle" blend, each yarn improves the other! 50% superb vicara joins with nylon for special luxury feel, strength, warmth! Extra absorbency, won't chafe! Shape-retaining, shrink-resistant, too! Handsome diamond knit. Wash sep. by hand. Colors: Lt. Blue, Charcoal Gray or Yellow.

LONG SLEEVE pullover. Ribbed neck, waist and cuffs. (1 lb.)
46 J 5965. See size chart below. . . . **4.98**

SLEEVELESS. Ribbed waist. (10 oz.)
46 J 5964. See size chart below. . . . **2.98**

⑥ THRIFTY ORLONS!
Give rich 100% orlon jersey knits with all their famed easy care, long wear . . . yet pay so very little! Silky-soft to touch, lightweight, extra strong. Wash quickly, dry back to shape without blocking! Won't shrink, ever! Wash separately by hand. Colors: Tan, Pink or Lt. Blue combinations.

LONG-SLEEVE pullover. Contrast trimmed neck, cuffs, waist. (1 lb.)
46 J 5920. See size chart below. . . . **3.69**

SLEEVELESS pullover. Contrast ribbed V-neck and waist. (10 oz.)
46 J 5919. See size chart below. . . . **2.29**

SWEATER SIZE CHART

Sleeveless or pullovers above. Small (fits 34-36 in. chest); Med. (38-40); Lg. (42-44). Coat styles right; Chest sizes: 36-38-40-42-44-46 in. State size, color.



⑦
5.85

⑧
5.98



⑨
Orlon
6.98

⑩
As low
as
4.89

Stout Sizes Zip Style

WARM! HANDSOME! INTERLOCK KNIT COAT STYLE

⑦ ALL VIRGIN WOOL WORSTED, panel knit . . . for a distinctive look! Thick heat-holding interlock knit holds sweater shape, wears longer. Smart open coat-type cuffs; ribbed neck, button placket. Wash separately by hand. Silver Gray (lt.); Leaf Green (med.) or Camel Tan (lt.). (1 lb. 4 oz.)
46 J 5912. See size chart at left. . . . **5.85**

⑨ 100% VIRGIN ORLON . . . cashmere-soft, strong and easy caring! Fine-gauge interlock knit for a luxury look, for warmth and shape-retention! Wonderfully washable, dries quickly back to shape . . . without blocking! Mothproof, non-irritating!
Snug rib cuffs; cardigan neck; 2 lower inset pockets. Wash separately by hand.
Colors: Charcoal Gray (dk.), Tan or Lt. Blue.
Shpg. wt. 1 lb. 4 oz.
46 J 5902. See size chart at left. . . . **6.98**

⑧ JOHNNY-COLLAR STYLED WOOL worsted . . . warmer, snug about the neck . . . collar zips all the way up! Virgin wool, interlock knit to hold shape and warmth! Double elbows; reinforced seams; taped neck, shoulders. Moth proof. Colors: Maroon, Med. Gray or Luggage Brown (dk.). (1 lb. 4 oz.)
46 J 5918. See size chart at left. . . . **5.98**

⑩ BUTTON OR ZIP COAT, wool worsted, interlock knit! Double elbows.
REG. sizes: Navy; Dk. Oxford Gray; Camel Tan (lt.); Silver Gray (lt.). (1 lb. 2 oz.)
46 J 5930. See size chart at left. . . **4.89**
STOUTS: Navy or Dk. Oxford Gray. Sizes: 48-50-52 in. chest. (1 lb. 4 oz.)
46 J 5942. State size, color. . . . **5.98**
ZIPPED: Reg. sizes. Brown Heather; Dk. Oxford Gray; Navy. (1 lb. 2 oz.)
46 J 5932. See size chart at left. . . **5.45**

See Page 287 for Spiegel Budget Power . . . stop dreaming . . . start living



CASUAL JACKETS . . .
FOR MEN AT LEISURE
So Smart!

Long on looks . . . on performance!
Deliberately styled for freedom!
The warmest way to his heart!



4 Black Watch
Sheen Gabardine 10.95



5 All Nylon
Reversible 13.75



7 Continental
Sheen Gab. 11.50



6 Sheen Gab.
in Color 8.98



8 Sheen Gab.
Reversible 8.75



Use Budget Power . . . make this the richest Christmas ever at your house



LOWEST PRICE EVER!

① 100% Nylon Blouse, Quilt Lined 7.98



ALSO tall Men SIZES

② Dan River Lined Poplin as low as 4.84



③ Boltaflex, Quilt Lined 12.95

First In Fashion Jackets . . . All Warm, All Value-ful!

Bright as Christmas wrappings, from Tangerine to Char-tones . . . skillfully styled, master-crafted with him in mind . . . Spiegel-low-priced to please you!

① ALL NYLON WONDER . . . combines warmth, lightness, washability . . . and coats you so little! Strong, smooth nylon on the outside—nylon quilted lining inside to keep him warm without weight! Just wash, drip dry . . . without ironing its fresh-as-new good looks are restored, its water and wind protection still intact! Abt. 25 in. long. Wash separately by hand.

Colors: Forest Green (dk.); Charcoal Gray (dk.); or Navy Blue. Sizes: 34-36-38-40-42-44 in. chest. (2 lbs. 4 oz.)
46 J 5655. State size; color 7.98

② DAN RIVER POPLIN DRIZZLER . . . priced so low . . . give him several. Plaid Sanforized cotton suede lining, color-keyed to washfast cotton shell! Water, crease resistant! Abt. 25 in. long. Tangerine; Charcoal Gray (dk.); White; Dk. Green; Mint Green (lt.) or Navy. Sizes: Sm. (fits 34-36 in. chest); Med. (38-40); Lg. (42-44). (2 lbs. 2 oz.)

46 J 5589. Reg. Sizes. State size, color . . . 4.84
Tall sizes: Cut longer in sleeves, body for men over 5'11" to 6'2". Charcoal Gray (dk.); Dk. Green; Navy only. (2 lbs. 4 oz.)
46 J 5663. State size, color 5.49

③ LEATHER-LIKE BOLTAFLEX . . . the flawless look—the quality-feel of leather, plus such practicality! Finer Boltaflex vinyl plastic—guaranteed for 1 year not to peel, scuff, crack! Wonderfully care-free, wipes clean with damp cloth! Striking color contrast in collar, pocket welts, cuffs and yoke trim! Warm 100% reprocessed wool quilted to rayon lining. Knit side inserts.

Abt. 25 in. long. Winter White/Black or Charcoal Gray/White. Sizes: 34-36-38-40-42-44 in. chest. (5 lbs. 8 oz.)
46 J 5656. State size, color 12.95

HOW TO MEASURE JACKETS: State your regular jacket size. If in doubt, measure around fullest part of chest over garments usually worn under jacket. The number of inches is your correct size. If in between size, order next larger size.

④ BLACK WATCH PLAID JACKET . . . in tune with fashion's latest trend . . . in time for Christmas giving! 15% nylon-fortified rayon sheen gabardine, defies long, hard wear . . . is spot, water resistant! Thick 100% reprocessed wool quilted to rayon lining is extra warm! Tailored with rounded continental collar, 2-slash pockets. Abt. 25 in. long. Dry clean. Colors: Black Watch (shown) or Brown Watch. Sizes: 34-36-38-40-42-44 in. chest. (3 lbs. 8 oz.)
46 J 5660. State size, color 10.95

⑤ ALL NYLON TURNABOUT . . . he'll wear two wonderful ways! You couldn't give a more practical gift! Tough, rugged nylon that defies wind and wear, reverses to soft fleece with heat-holding cells that insulate, afford lightweight warmth! Retains shape after laundering, needs no ironing! Abt. 25 in. long. Wash separately by hand. Colors: Red taffeta, Black knit, White fleece; Black with Red and Red; Navy with Navy and White. Sizes: 34-36-38-40-42-44 in. chest. (6 lbs. 4 oz.)
46 J 5652. State size, color 13.75

⑥ DRAMATIC COLOR! Give him high-style . . . plus easy care, long wear! Heavy nylon-reinforced rayon, acetate sheen gabardine is water-repellent, spot-resistant! Extra warm 100% reprocessed wool quilted to rayon lining holds heat! Contrasting knit collar, cuffs. Abt. 25 in. long. Dry clean. Colors: Tangerine with Charcoal knits; Charcoal/Tangerine; Mint/Brown; Lt. Blue/Navy. Sizes: 34-36-38-40-42-44 in. chest. (3 lbs. 8 oz.)
46 J 5526. State size, color 8.98

⑦ SHEEN GABARDINE GOES CONTINENTAL! For him . . . dynamic styling—brilliant color treatment! Vivid knit overlay accents collar and pocket welts! Heavy nylon-fortified rayon sheen gabardine shell, means stronger, longer wear! Water and spot resistant besides! 70% reprocessed wool, 30% rayon-nylon-orion quilted to rayon lining holds body warmth! Abt. 25 in. long. Dry clean. Colors: Black with Pink, Black and White trim or Brown with Brown, Tan, White. Sizes: 34-36-38-40-42-44 in. chest.
46 J 5657. State size, color. (3 lbs. 8 oz.) 11.50

⑧ DOTTED ARROW . . . SHEEN GABARDINE REVERSIBLE . . . like giving two gifts . . . he'll look equally handsome in the colorful all-over pattern, or bright solid side. A wonderful, wearable jacket—all heavyweight rayon, acetate gabardine, fortified with 15% nylon on printed side, for long, hard wear! Both sides water repellent . . . spot, stain and wrinkle resistant! New rounded collar. Abt. 25 in. long. Dry clean. Colors: Black reverses to Blue or Charcoal Brown to Gold. Sizes: 34-36-38-40-42-44 in. chest.
46 J 5653. State size, color. (3 lbs. 5 oz.) 8.75

See Page 287 for Spiegel Budget Power Plan . . . a wonderful way to buy



① Blouse-style Jacket 24.50



② Action-back Surcoat 28.95



③
Our Lowest
Price Ever!
as
low
as 12.95

Nylon For Strength!
Milium For Extra Warmth!
Tough Horsehide For Wear!

8 Rugged Leathers, All Wonder Buys for Christmas!

Jackets, no man could resist . . . each an investment . . . so long wearing, so low priced! Smooth, supple leathers, bound to be the pride of his wardrobe!

① ② **STRONG, STURDY HORSEHIDE JACKETS** packed with super-special qualities . . . for a Christmas he'll long remember! Crafted of top front-quarter horsehide, as tough and rugged as leathers come . . . and now, all nylon stitched for extra durability! PLUS magic Milium-treated nylon taffeta lining, quilted to all nylon fleece! Thicker, warmer, lighter . . . stronger than ordinary linings! Windproof . . . leather affords true zero-weather protection! Resilient, natural structure allows flexing and stretching! Your choice, two eye-catching styles—in Cordovan (med. dk. brown) horsehide!

① **The Blouse:** roomy bloused back, zip closing, 100% 2-ply nylon knit cuffs, waist. Abt. 26 in. long. Sizes: 34-36-38-40-42-44 in. chest. How to measure below. Shpg. wt. 5 lbs. 46 J 5708. State size . . . 24.50

② **The Surcoat:** extra comfortable action back . . . elastic side inserts. Abt. 31 in. long. Sizes: 36-38-40-42-44-46 inch chest. See how to measure, below. (6 lbs. 3 oz.) 46 J 5709. State size . . . 28.95

③ **AMAZING LOW PRICE!**

Choose from two select quality leathers. Warmly interlined with thick 100% reprocessed wool, stitched to rayon. Full leather facings. 50% wool, 50% cotton knit waist, cuffs.

Abt. 26 in. long. Med. Dk. Brown. Sizes: 34-36-38-40-42-44 in. chest. How to measure, below.

Rich Cape: (5 lbs. 8 oz.) 46 J 5743. State size . . . 12.95

Horsehide: extra rugged, extra tough! (5 lbs. 10 oz.) 46 J 5741. State size . . . 17.75

④ **"GLUV-ELK" SURCOAT** . . .

distinctively styled for discriminating tastes! Select cowhides are tanned to a special soft, supple, easy-care finish! Outstandingly strong, long wearing . . . warm, lightweight! Resists

wind and rain, wipes clean with damp cloth! Heat-retaining 100% reprocessed wool quilted to rayon lining. Abt. 31 in. long. Cashmere Tan or Charcoal Gray (dk.). Sizes: 36-38-40-42-44-46 in. chest. See how to measure, below. State size, color. 46 J 5704. (6 lbs. 13 oz.) 29.50

⑤ **GIFT ELEGANCE!** Gluv-elk blouse style . . . select cowhide, tanned to wear . . . soft, supple, so lightweight! Smart jacket styling—popular 3-pc. knit trim, with color knit-in at waist. Carefree, wipes clean with damp cloth! Rayon lined. Abt. 26 in. long. Colors: White with Black knit; Cashmere Tan (lt.) with Dk. Brown or all Charcoal Gray (dk.). Sizes: 34-36-38-40-42-44 in. chest. See how to measure, below. State size, color. (5 lbs. 8 oz.) 46 J 5705 . . . 16.95

⑥ **IMPORTED** . . . perfectly matched New Zealand suede, in a dramatically tailored leisure coat! Supple, flawless, water repellent skins! Rayon lined. Abt. 31 in. long. Dry clean. Charcoal Gray or Sand (lt. brown). Sizes: 36-38-40-42-44-46 in. chest. How to measure, below. State size, color.

Regular: fits to 5'11". 46 J 5771. (5 lbs.) . . . 24.95

Tall Sizes: cut longer in sleeves, body to fit men over 5'11" to 6'2". (5 lbs. 2 oz.) 46 J 5777 . . . 26.95

⑦ **ARGYLE MOTIF** . . . A gala touch for imported suede!

Vibrant, leather color inserts enhance beauty of perfectly matched New Zealand suede . . . fashion-toned in season's favorite colors! An all weather jacket . . . resists water, stains! Has practical, contrasting smooth leather collar! Rayon lined. Abt. 25½ in. long. Dry clean. Colors: Lt. Blue; Charcoal Gray or Copper Brown. Sizes: 34-36-38-40-42-44 in. chest. See how to measure, below. State size, color. (3 lbs. 4 oz.) 46 J 5706 . . . 19.95

⑧ **NEW LAUNDRER SUEDE** . . .

at last, an end to costly cleaning! Give him the luxury of suede with none of the expense! Guaranteed washable, as nationally advertised in magazines and on TV! Won't crack . . . resists shrinkage, perspiration! Colors won't fade! Saves cleaning dollars! Novel knit trim. Rayon lined. Abt. 26 in. long. Wash separately by hand. Colors: Copper Brown; Mint Green; Charcoal Gray or Sand. Sizes: 36-38-40-42-44-46 in. chest. See how to measure, below. State size and color. 46 J 5707. (3 lbs. 3 oz.) . . . 22.50

HOW TO MEASURE FOR JACKETS: State your regular jacket size. If in doubt, please measure around fullest part of chest over the garments usually worn under your jacket. The number of inches is your correct size. If in between size, order next larger size.

For a Bright Christmas



4 Fashion-Air
Gluv Elk! 29.50

5 Colorful
Gluv Elk 16.95



6 Imported Suede as low as 24.95



7 High-style Imported suede 19.95



8 22.50

LAUNDRER SUEDE®

Revolutionary, new wash 'n' wear suede ... in season's latest colors! Carries the certified seal of the American Institute of Laundering! Retains soft finish ... colors stay forever bright! Won't shrink!



See Page 287 for Spiegel Budget Power ... a better way to better living



Color, Fashion's Gift!

LEISURE-WEAR LUXURY, AT RIGHT

③ COLORFUL WOOL FIBRENE COAT

Our finest . . . a dynamic combination of color, design and surface interest—sure to please HIM! Contrasting fibre fabric fibers, interwoven in surface, enhance new chartone shades; add interesting texture to fine all wool fabric! Smartly tailored in new narrower silhouette, with new, comfortable vented back, shape retaining built-up canvas inner front, high count rayon lining. Colors: Black or Charcoal Brown (dk.). (3 lbs. 4 oz.)
40 J 105. See how to order coat below, left 22.50

④ WOOL COAT—SUBTLY CHECKED!

A dressy coat he'll wear 'n' wear—sure to combine well with all his slacks, (especially darker tones); has smart "coordinate" look! Handsome check pattern with flecks of bright color woven into 100% wool fabric. Distinctively tailored in the widely worn two-button model, with back vent for added comfort! Shape-retaining Hymo canvas inner front, insures longer wear. Rayon lining. Colors: Med. Gray or Tan. (3 lbs. 4 oz.)
40 J 144. See how to order coat below, left 18.95

⑤ NOW . . . BLACK WATCH IN CORDUROY!

Favorite fabric . . . favored styling! Corduroy, handsomely tailored in slim, trim lines—trend-setting new three-button front—turns to Black Watch tartan plaid, today's leader in popularity! Soft, muted tones, in keeping with the Charcoal shades of the season! It's Hymo canvas inner front, holds shape perfectly . . . back vent. Rayon lined. Dry clean. Color: Authentic Tartan plaid combination of Black, Green and Blue. (3 lbs. 4 oz.)
40 J 111. See how to order coat below, left 12.95

⑥ CORDUROY COLOR CO-ORDINATES!

We've matched a striking shirt, slack outfit in color and fabric for your gift giving! Completely washable pinwale corduroy! Even the self-belt is color-conscious . . . it reverses to echo either slacks or shirt!

THE SHIRT: Contrast piped to match slacks, at collar and button-pockets. Colors: Capri Blue, Mint Green (lt.) or Pink. Sizes: Sm. (fits 14-14½ in. neck); Med. (15-15½); Lg. (16-16½); X-Lg. (17-17½).
40 J 244. State size; color. (2 lbs.) 3.98

THE SLACKS: Pleated; continuous waist, reversible self-belt. Black; Dk. Brown or Charcoal Gray. (2 lbs.)
40 J 245. How to order, Chart A below left 5.98

THE OUTFIT: Buy set, save more! Colors: Capri Blue with Black slacks, (shown); Mint Green (lt.) with Dk. Brown; or Pink with Charcoal Gray (dk.). (4 lbs. 2 oz.)
40 J 246. State color; sizes of each 9.75

⑦ "AMERICAN LOOK" IN GABARDINE

Handsomely harmonizing washable set, sure to make his a bright Christmas! Big design news—authentic Indian motif is hand beaded on genuine cowhide leather belt . . . picks up pattern of shirt's chest stripe . . . offsets dark slacks. Both of rayon sheen gabardine! Sport shirt has wide cotton rib knit chest insert—finer single needle construction. Pleated slacks are rayon, fortified with 15% nylon for tough wear surface, 17% dacron in body for shape retention, crease resistance. Colors: Red and White or Black and White shirt; Black slacks. Order slack size—shirt will correspond! Even waist sizes 28 to 40 in.; inseam 28 to 34 in. State shirt color; waist size, inseam length; tell which is inseam.
40 J 243. (3 lbs. 12 oz.) 12.95

⑧ ALL WOOL COLORAMA!

Color coordinated—styled for him! Light and dark tones of the jacket plus matching shades of the elastic web belt . . . all cooperate to compliment popular charcoal gray slacks! Quite a contrast! Quite an outfit!

THE JACKET: 100% wool worsted plaid, rayon lined. Lightweight for three season wear. Abt. 24 in. long. Colors: Pink plaid or Mint Green (lt.) plaid. Chest sizes 34-36-38-40-42-44 in.
40 J 256. State size; color (2 lbs. 2 oz.) 10.95

THE SLACKS: Pleated all wool flannels. Charcoal Gray (dk.); elastic belt in Pink or Mint Green to match jacket. See how to order, Chart A below, left.
40 J 257. Shipping weight 2 lbs. 9.95

THE OUTFIT: Color harmony, certain to please. Save 95¢ on set. State sizes of each; jacket color above.
40 J 259. Shipping weight 4 lbs. 6 oz. 3-pcs. 19.95



Now!

EXCITING EXTRAS IN WOOL FLANNEL . . .

Water Repellent

Treated with
CRAVENETTE
Super
SILICONE

Spot Resistant

① ② WOOL FLANNELS—NEW, WONDERFUL!

Flannel goes modern in outstanding year 'round slacks! Coat \$14.95 in retail stores . . . priced Spiegel-low—so you can afford many! Wool flannel now has a durable water-repellent finish, thanks to miracle of Cravenette's shower-shedding, super-silicone! They'll ward off soil, wear; resist non-oily spots, stains! Highly crease-resistant—wrinkles hang out, press stays in! Soft, luxurious look and feel; top-notch tailoring! Non-roll waistband; hookflex closing. Belt not included. Colors: Charcoal Gray (dk.); Charcoal Brown (dk.) or Med. Gray. Shipping weight 2 lbs.

① PLEATED style! Continuous waist.
40 J 710. Chart A, below 9.95

② NON-PLEATED! Slimming front.
40 J 711. Chart B, below 9.95

9.95

HOW TO ORDER SLACKS
A Pleated: waist sizes: 28-29-30-31-32-33-34-36-38-40 inches. Inseam length 28 to 34 in. State color; waist size, inseam. Tell which is inseam.

B Non-pleated: waist sizes: 30-31-32-33-34-36-38-40-42 inches. Inseam lengths 28 to 34 inches. State color; waist size, inseam length. Tell which is inseam measurement.

HOW TO ORDER SPORT COATS
Regular Heights (over 5'6" to 5'10"), chest sizes 34 to 44 inches. Tall heights (over 5'10" to 6'2"), chest sizes 36 to 44 inches. Sorry, no shorts or stouts.

To order sport coats see Men's measuring chart in back of Big Catalog. Fill in chest size, weight, height; color. Attach chart to regular order blank.

For the Man in Your Life



③ Wool Fibrene 22.50



④ Wool Check 18.95



⑤ Black Watch 12.95



⑥ Corduroy Set 9.75 Shirt 3.98 Slacks 5.98



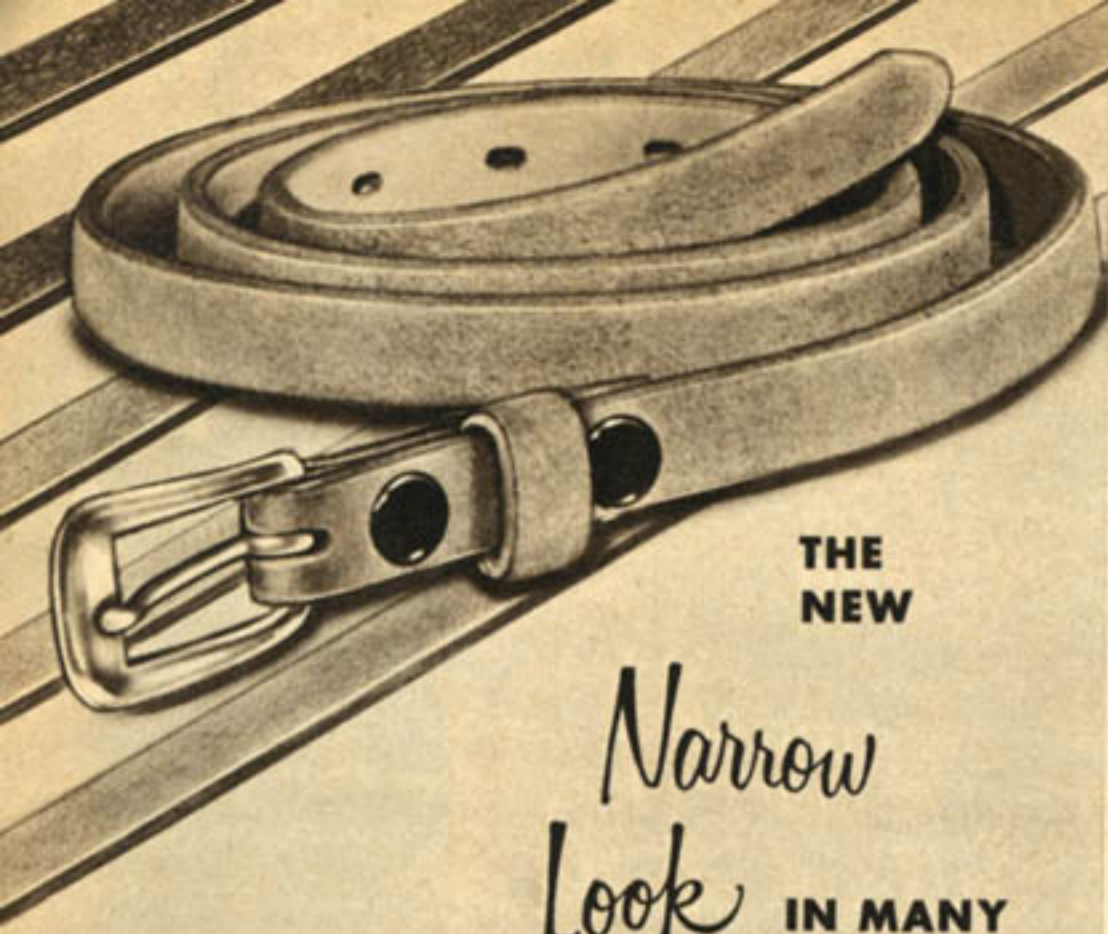
⑦ Sheen Gabardine Set 12.95



⑧ Wool Set 19.95 Jacket 10.95 Slacks 9.95

See Page 287 for Spiegel Budget Power Plan ... have more, enjoy more





**THE
NEW**

*Narrow
Look* **IN MANY
COLORS**

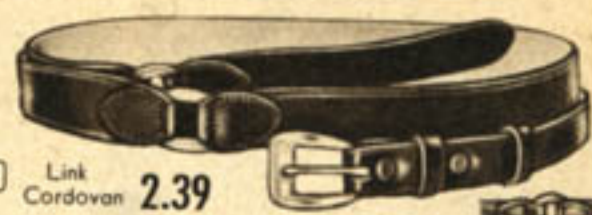
BRIGHT BOLD COLOR IN NARROW SUEDE

Combines the richness of leather, with exciting color interest! Fashion-first suede belts that make an imaginative . . . inexpensive gift! Give an assortment to mix 'n match with all his slacks! Of soft, supple leather in the new 1/2-in. width . . . with neat beveled edge, solid brass buckle. Gift boxed. High-fashion colors: Charcoal Gray (dk.); Rust; Pink; Navy; Brown or Mint Green (lt.). Waist sizes: 30-32-34-36-38-40-42-44 in.

44 J 4082. State actual waist size; color. (12 oz.) . . . 3 for 3.00
Each, boxed for giving! Shipping weight 4 oz. Each only 1.15



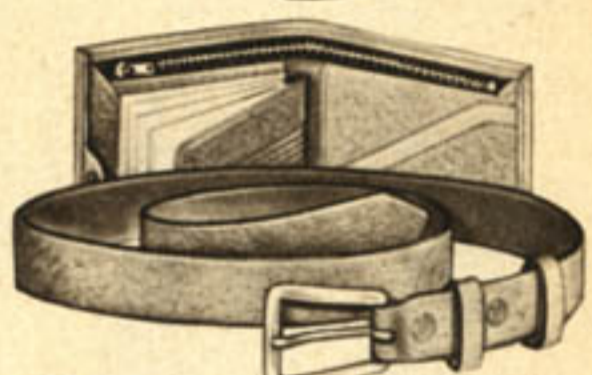
① Top Cowhide 1.98



② Link Cordovan 2.39



③ Alligator as low as 2.98



④ Genuine Pigskin Set 4.95



Sterling!
3-pc. Set 4.95

"His Choice" in Leather Craft

RICH 'N MELLOW LEATHERS . . . HANDSOME POLISHED BUCKLES



⑥ Top-Bridle Cowhide 3.50



⑦ Alligator-grain Cowhide 2.00



Belt g-i-v-e-s!

① **TOP-GRAIN COWHIDE** . . . personalized solid brass buckle, makes belt especially his! Has gold-colored initial and edge on pearl-like grounds. Inch wide—smooth leather with tooled edge, for dress or sports wear! Snap on buckle. Gift boxed. Colors: Brown or Black. Even waist sizes 30 to 44 in. State color; actual waist size, any one initial except I, O, Q, U, V, X, Y, Z.
44 J 4076. (8 oz.) 1.98

③ **RICH IMPORTED ALLIGATOR** . . . priced right . . . a luxury gift you can afford! These same popular leather belts sell for far more elsewhere! Your choice of two widths—cowhide, suede lined. Nylon stitched overlap; handsome solid brass snap-on buckle. Gift boxed. Color: Brown. Even waist sizes 30 to 44 in. State actual waist size.
44 J 4071. 3/4-in. wide. (1 lb.) 2.98
44 J 4061. 1-in. wide. (1 lb.) 3.98

⑤ **3-PC. BELT SET** . . . an interchangeable sterling silver buckle, with hand tooled initial, plus 2 top-grain cowhide leather belts. Inch wide. 1 Black, 1 Brown. Gift boxed. Even waist sizes 30 to 44 in. State actual waist size; any 1 initial except I, O, Q, U, V, X, Y, Z. Federal Tax on buckle incl.
44 J 4074. (1 lb.) 4.95

⑥ **TALLOW BRIDLE cowhide.** Paris craftsmen use tallow to give fine leather a soft, glowing sheen; superb suppleness! Inch-wide belt has rich hand-rubbed finish; tooled edge. Solid brass buckle with one initial. Gift boxed. Black or Brown. Even waist sizes 30 to 44 in. State color; actual waist size, any 1 initial except I, O, Q, U, V, X, Y, Z.
44 J 4079. (1 lb.) 3.50

② **CORDOVAN LINK BELT** . . . a gift he'd choose for himself! Smart, new side links, once available only in custom belts, now combined with fine cordovan-shell horsehide. Brass-plated buckle and links complete handsome picture. Inch wide, smartly tooled at edge; buckle detaches. Gift Boxed. Redwood. Even waist sizes 30 to 44 in. State actual waist size.
44 J 4070. (8 oz.) 2.39

④ **PIGSKIN WALLET, BELT SET** . . . two gifts . . . one low price! Wallet alone is worth \$4.98. Perfectly matched in genuine pigskin, gift boxed for him! A secret pocket hides inside wallet's zip pocket. Supple inch-wide belt with snap-on solid bronze buckle. Tan. Even waist sizes 30 to 44 in. State actual waist size. Excise Tax on Wallet incl.
44 J 4058. (1 lb. 8 oz.) Set 4.95

⑦ **PARIS S-T-R-E-T-C-H** belt of select alligator-grain cowhide! Special stretch elastic at brass-plated buckle will g-i-v-e with his motion, is so comfortable he'll hardly feel belt on! Paris gift pack keeps belt factory-fresh! 1-in. wide. Brown. Even waist sizes 30 to 44 in. State actual waist size.
44 J 4078. (8 oz.) 2.00



Budget Power can bring you more of the good things of life . . . today



Smart Slacks, All Master-tailored For His Pleasure!

Best slacks we've ever offered at this price! Miracles of precision-fit cutting; carefully detailed tailoring!

7.88

Custom styled by "Mercury" ... each pair completely washable, crease resistant! Each pleated and self belted!

SAVE NOW, YOUR CHOICE, ANY 2 FOR \$15

DACRON-BLEND FLANNEL

A finer slack, with custom-type tailoring ... check every fine feature! Non-roll continuous waist, pleated front, Hook-flex closing, saddle-stitched side seams. Resists wrinkles too! Dacron-fortified rayon flannel in a practical year 'round weight. Wonderfully washable! Colors: Med. Gray; Charcoal Gray (dk.); Charcoal Brown (dk.). See how to order, below.

40 J 707. (2 lbs. 1 oz.)..... **7.88**
 SAVE ON 2. (4 lbs. 2 oz.)..... 2 for 15.00

DARK-TONE FIBRENE CORD

Extra superb detailing plus colorful surface interest! Finer features include ... smooth Hook-flex closing; Hollywood pleated front, non-roll continuous waist. Completely washable, crease resistant! Of narrow-wale rayon cord, sparked by interwoven fibre yarns ... he'll wear the seasons 'round. Colors: Dk. Brown or Charcoal Gray (dk.). See how to order, below.

40 J 708. (2 lbs. 1 oz.)..... **7.88**
 SAVE ON 2. (4 lbs. 2 oz.)..... 2 for 15.00

NYLO-DAC SHEEN GABARDINE

Quality tailoring usually found only in custom clothing, make these pleated slacks an outstanding buy, distinctive gift! Of regular-weight rayon gabardine, fortified with nylon for strength, wear ... dacron for shape-retention, wrinkle-resistance! Easy-care wonders, completely washable. Charcoal Gray (dk.); Skipper Blue (lt. navy); Med. Brown. How to order, below.

40 J 709. (2 lbs. 1 oz.)..... **7.88**
 SAVE ON 2. (4 lbs. 2 oz.)..... 2 for 15.00

TO ORDER SLACKS ... Waist sizes: 28-29-30-31-32-33-34-36-38-40 in. Inseam lengths: 28-29-30-31-32-33-34 in. State color; waist size, inseam length. Tell which is inseam.

See Page 287 for Spiegel Budget Power ... stop dreaming ... start living



Personalized for Him



"FAN TAIL" INITIALS

Set sells elsewhere for \$5.00. Oriental sophistication—antique White gold finished initial and border on Black enamel. All initials but: I, O, Q, U, V, X, Y, Z. Alligator grip tie bar. State one initial. (5 oz.)

54 J 2259. Cuff links, tie bar... 2.95

New matching Black braided Rayon Bolo Tie—worn with sport shirts. 54 J 2260. State initial. (5 oz.)... 1.19

Cuff Links, Tie-bar and Belt Set.



MONOGRAMMED SET

Sells elsewhere for \$12.95. Dazzling facet hand-cut Austrian Rhinestones set in Silvery Rhodium metal initials; Yellow gold plate frame and trim. Cowhide belt. Set includes: Cuff links, tie bar and belt. Belt sizes: 28 to 42. State waist size, 2 initials. Brown. Shpg. wt. 6 oz.

54 J 2207... 3-pc. Set 7.95

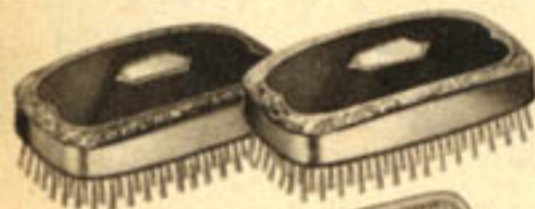
54 J 2208. Links 'n Bar. (5 oz.) 4.95

54 J 2210. Cuff links. (4 oz.)... 2.95

54 J 2211. Tie chain. (4 oz.)... 2.45

54 J 2212. Belt. (6 oz.)... 3.95

Personalized... for him Handsomely gift boxed



A

A ENGRAVED BACK

- Handsome engraved chrome
- Keeps its low price a secret

Military set... a snappy trio of highly polished chrome and enamel. Set includes two fine nylon bristle brushes with 7 in. comb. Brushes have a section for engraving on the top. An amazingly fine set for this special Christmas price! Gift boxed. Shpg. wt. 1 lb. 3 oz.

54 J 2048... 1.89



B

B OUR BEST SET!

- 4 piece deluxe men's set
- Gay satin lined gift box

Gleaming copper glow plastic set in modern design... sells elsewhere for \$5.00. Excitingly packaged in satin lined lucite top box; sure to be his favorite gift all year 'round! Includes: 2 hair brushes, one clothes brush (all with fine nylon bristles) and one 7½ in. comb.

54 J 2047. (2 lbs. 8 oz.)... 3.95



C

C TORTOISE SHELL

- Favored by men everywhere
- Lovely lucite top gift box

Plastic comb and brush set, packed in a handsome lucite top gift box. Makes a gay gift for that special man in your life! Includes: one hair brush, one clothes brush (both with sturdy nylon bristles set in rubber), and one 7½ inch comb.

54 J 2046. (2 lbs.)... 2.49

Top His Christmas with

Styles 1 through 25 on opposite page

New Jewelry by Swank—Fashion Famous—Alligator grip tie bars

1 "HOLY COW, Bum Steer" novelty cuff links. Conversation pieces in gleaming 22K Yellow gold plate; antique finish. 54 J 2217. Ppd... 2.75

2 "ATLAS"—unique cuff links. Eastern and Western hemispheres engraved in 22K Yellow gold on Black enamel. 54 J 2209. Ppd... 2.75

3 "AZTEC" Striking cuff link set with Black and Gold Geometric design; catches all eyes! State Yellow or White Gold. V54 J 2228. Ppd. Set 5.50

4 "JEWEL TONE" frame; glittering rhinestone center. 22K White Gold trim. State: Garnet (Red), Jet Onyx or Dk. Blue. V54 J 2227. Ppd. Set 5.50

5 "QUAINT" Confucian heads add Oriental tang to genuine Bamboo cuff links. 22K Yellow gold plate heads and frame. V54 J 2226. Ppd. Set 5.50

6 "TURBAN KNOT" Set, distinctively styled for the discriminating man. Silver finish metal. State: Mint or Pink. 54 J 2234. Ppd... Set 3.85

7 SNAPPY "CHEVRON" set. State: Blue with Dk. Blue, Pink with Black, or Cream with Brown. 54 J 2230. Ppd... Set 3.85

8 "SWIRL" set—Silver finished metal trim. State: Pink or Cognac center stone. 54 J 2229. Ppd... Set 3.85

9 "GEOMETRIC" modern design in new colors. State: Pink, Mint or Cream; all with Black. 54 J 2236. Ppd... Set 2.75

10 "PEARL-O-RAMA" Silver wagon wheel—simulated pearl center. State: Natural or Pink Pearl. 54 J 2235. Ppd... Set 2.75

Novelty Styles for every man Alligator grip tie bars...

11 LATTICE EFFECT—22K Yellow gold plate frame with genuine mother-of-pearl centers. 54 J 2270. (5 oz.) Set 2.95

12 "MOTHER OF PEARL"—lowered; 22K Yellow gold plate. State: Mint, Pink or natural Pearl. V54 J 2247. (5 oz.) Set 4.95

13 "FISH FLY" Set—Hand tied, set in glass. Perfect for Fishermen! 22K Yellow gold frame. Sure to please him! 54 J 2248. (5 oz.) Set 3.95

14 "SPORT SILHOUETTE" in Black, on Pink Mother-of-Pearl. 22K gold plate setting. State: Bass or Flying Pheasant. V54 J 2237. (5 oz.) Set 4.95

15 "ROUND FLORAL" set. Bright Pink and Black enamel on silver plated frames. 54 J 2250. (5 oz.) Set 3.95

16 GLEAMING OPAL—colorful. 22K Yellow gold plate frame. State: Fire (red) or Blue Opal. 54 J 2238. (5 oz.) Set 3.95

17 "SEA SHELL PEARL". Antiqued silver shells with lustrous simulated pearls. State: Natural or Pink Pearl. 54 J 2249. (5 oz.) Set 3.95

18 MASONIC EMBLEM of 22K Yellow gold plate on Mother of Pearl or imitation Ruby base. State: Pearl or Ruby base. 54 J 2269. (5 oz.) Set 3.95

19 20 RHINESTONE center; Yellow gold plated frames. State: Jet Black or simulated Ruby. (5 oz.) 54 J 2254... Set 3.25
54 J 2255. Cuff links... 1.95
54 J 2256. Tie chain... 1.95

21 COLORFUL STONE mound; Yellow gold plated metal—all hand polished parts. Ribbed design on sides. State: Red, Pink, Blue, Charcoal stone. 54 J 2252. (5 oz.) Set 2.95

22 GOLD WHEEL. 22K Yel. gold. Center stone set in Black ground. State: Pink, Blue or Yellow. 54 J 2251. (5 oz.) Set 2.95

23 LEATHERETTE CASE Gold tooled; corduroy lined sections and upswing tray. 7½x3x5½-in. 54 J 2218. (15 oz.)... 3.95

24 "ANTIQUED CAR" Regularly sells for \$5.00! Colorful baked enamel; yellow gold plate trim and frame. Cuff links, tie bar and key chain. 54 J 2257. (5 oz.) Set 2.95

25 "QUILTED" Classic set. The perfect set with distinguished simplicity of design. Hand polished center with Yellow gold plate sturdy frames. 54 J 2258. (5 oz.) Set 3.45

Prices on these 2 pages include federal excise tax

Use Budget Power... make this the richest Christmas ever at your house

Swank Jewelry



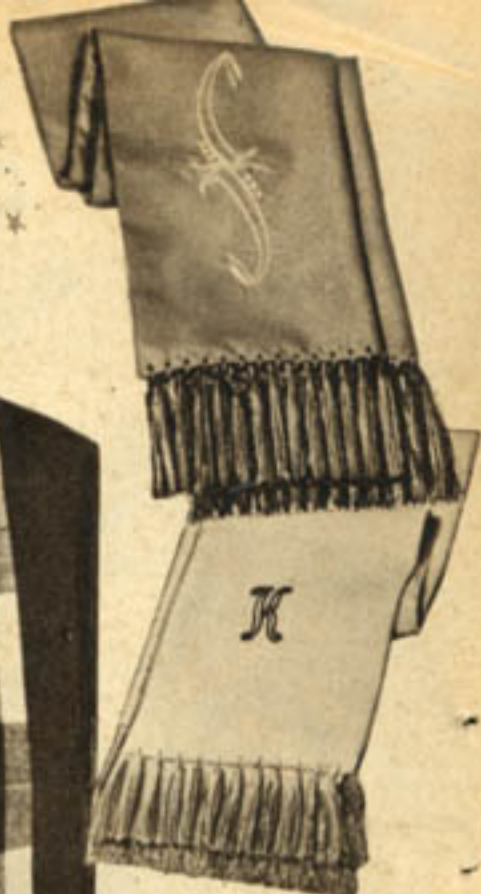
DISTINCTIVE UP TO DATE STYLES FOR EVERY MAN



Men's
Jewelry Box
3.95

Jewelry shown
not included

See Page 287 for Spiegel Budget Power Plan . . . a wonderful way to buy



① Wool Set
3.98

② Wool Set
2.75

③ Wool Scarf
1.98

④ Lustrous Rayons
1.69 ea.

Santa Suggests Mufflers—Warm, Wonderful VALUES!

① LUXURY WOOL SET . . . Soft, warm virgin yarns! Muffer is individually loomed, has attractive self pattern knit, hand-knotted fringe! Abt. 47x12 in. Matching gloves, grand for driving. Ribbed cuffs. Gift boxed. Med. Gray, Tan or Navy. Glove sizes below. State size, color. 44 J 4610. (1 lb. 4 oz.)...3.98

② FINE WOOL SET . . . 100% virgin wool to dress up his Christmas! Wonderfully warm, handsome in its fancy self-pattern knit. Fringe tips muffer (abt. 47x12 in.) Gloves match muffer; ribbed at cuffs. Boxed. Charcoal Gray (dk.), Navy or Tan. Glove sizes below. State size, color. 44 J 4625. (1 lb. 4 oz.)...2.75

③ 50% IMPORTED WOOL blended with fine domestic wool . . . to give HIS muffer the delightful softness, richness of cashmere! Looks so costly, costs so little! Striking plaid; thick 1½ in. fringe. Muffer abt. 48x12 in. Boxed for giving! Cognac (lt. brown), Lt. Gray or Lt. Blue plaid. State color. 44 J 4627. (12 oz.)...1.98

④ LUSTROUS RAYON . . . elegant with a smart scroll design or his initial embroidered in striking contrast! Hand knotted fringe. Abt. 44x12 in. Scroll: Colors: Tan, White, Navy or Med. Gray. State color. 44 J 4628. (10 oz.) Boxed 1.69 Initial: White. State any initial except I, O, Q, U, V, X, Y, Z. 44 J 4626. (10 oz.) Boxed 1.69

GLOVES OF LUXURY LEATHER, PRICED LOW FOR GIFT-GIVING, ALL AT RIGHT

⑤ ⑥ ⑦ SUPPLE IMPORTED CAPEKIN LEATHERS . . . CHOICE OF HIS FAVORITE LININGS! All priced low to please your budget . . . styled extra smartly, crafted extra carefully to please him! All slip-on styles with easy-on side vent openings; all fully outseam sewn. Stitched backs.

⑤ THICK NYLON FLEECE lined to wear and wear, to hug and snug him warm! Dries fast! Med. Brown or Black. State size below, color. 44 J 4508. (8 oz.)...2.98

⑥ FUR, FLEECE LINED . . . luxury of rayon, cotton fleece hand, warmth of rabbit fur wrists. Med. Brown, Black. State size below, color. 44 J 4565. (8 oz.)...2.98

⑦ ALL RABBIT-FUR LINED . . . amazing buy! Combines richness of luxury leather with warmth of fine fur. Med. Brown, Black. State size below, color. 44 J 4533. (8 oz.)...3.49

⑧ DELUXE BLUE RABBIT fur lining plus superb South African imported cape! What a combination of warmth, of quality craftsmanship . . . what a gift! Slip-on, fully outseam sewn; osaan whip-stitched for added beauty! Lt. Brown with Blue fur lining. State size below. 44 J 4540. (8 oz.)...5.95

⑨ SOUTH AFRICAN CAPE . . . unlined for sleek, dress-up smartness! \$4.98 elsewhere! Top-grade leather, expertly crafted, detailed. Side wall construction; osaan stitched; raised stitched back. Lt. Tan (cork), Charcoal Gray (dk.) State size below, color. 44 J 4529. (8 oz.)...3.98

⑩ PECCARY PIGSKIN . . . unlined for slick, smooth dress! Of fine, supple leather, so deserving of expert workmanship! \$5.98 elsewhere! Costly sidewall construction; nylon reinforced osaan stitching; hand-stitched back. Cork (lt. tan). State size below. 44 J 4530. (8 oz.)...4.50

⑪ ⑫ NEW WARMTH WITHOUT WEIGHT . . . DACRON-PILE LINED imported cape! New \$5-saving added wear! New easier dry cleaning! He'll appreciate the warmth of fleecy dacron-pile lining, snug as lambewool, allergy free; he'll praise the richness of satin-smooth imported cape. Strong nylon-stitched outseams!

⑪ SLIP-ON STYLE. Stitched back. Med. Brown or Black. State size below, color. 44 J 4550. (8 oz.)...3.49

⑫ STRAP-WRIST style. Stitched back. Med. Brown or Black. State size below, color. 44 J 4551. (8 oz.)...3.98

⑬ CAPE AND WOOL knit . . . perfectly suited to driving . . . especially suited to him! All warm wool knit has supple pigtex capeskin leather palm for extra service! Ribbed cuffs. Tan with Cork (lt. tan) palm. State size below. 44 J 4507. (8 oz.)...1.84

⑭ DEERSKIN PLUS . . . 55% wool for warmth, 30% mink for softness, 15% nylon for endurance . . . an extra luxurious knit blend! Gripper stitched deerskin palm—marvelous for driving; cable-stitched back. Tan or Charcoal Gray (dk.). State size below, color. 44 J 4522. (8 oz.)...2.89

⑮ ⑯ TOUGH, MAR-RESISTANT HORSEHIDE, LINED for warmth! Pliant as cape . . . more rugged! Resists scuffing, heat, oil and water; outstandingly durable! Nylon-sewn outseams; fancy stitched back!

⑮ 50% WOOL, 50% DACRON lined slip-on! All the warmth of wool, all the wear, easy care of dacron! Black or Dk. Brown. State size below, color. 44 J 4515. (8 oz.)...3.49

⑰ RABBIT FUR LINED . . . strap-wrist style to shut out the wind! Thick, soft fur holds body warmth! Black or Dk. Brown. State size below, color. 44 J 4517. (8 oz.)...4.98

FOR GLOVES tell us your regular size or measure right hand. Hold hand flat, pass tape measure around hand at knuckles. Exclude thumb. Number of inches is your size. If between sizes, order next larger size.

ORDER SIZE	SMALL	MEDIUM	LARGE
Hand Size . . .	8-8½	9-9½	10-10½



5 Nylon-fleece Lined 2.98



6 Fur and Fleece Lined 2.98



7 Were 3.85 3.49 Fall Catalog



8 Deluxe Cope, Fur Lined 5.95

FINE IMPORTED CAPESKINS, SNUGLY-LINED . . . HIS CHOICE THIS CHRISTMAS!



9 Imported Cope 3.98



10 Peccary Pigskin 4.50



11 Slip-on Style 3.49



12 Strap-wrist Style 3.98

DRESS LEATHERS, UNLINED . . . SO SLEEK!

DACRON-PILE LINED CAPE . . . LIGHT, WARM!



13 Cape and 100% Wool 1.84



14 Deerskin and Wool Blend 2.89



15 Wool, Dacron Lined 3.49



16 Full Fur Lining 4.98

LEATHER AND KNIT, PRACTICAL LUXURIES!

HORSEHIDES . . . MOST ENDURING OF ALL!

See Page 287 for Spiegel Budget Power Plan . . . increase your buying power





Styles That Say

Here are some inspired gift ideas . . .
A varied selection of Romeos for
the top man on your shopping list.

Low price
for this quality **4.39**

FINEST CUSHIONED KID LEATHER ROMEO

Full leather linings, Airfoam cushion insoles rest feet in soft, luxurious comfort. Indoors or out, tough leather soles, rubber heels give plenty of wear. Stitched construction. Priced very low for this quality.

Sizes: 6, 6½, 7, 7½, 8, 8½, 9, 9½, 10, 10½, 11 and 12.
Medium width (D).

49 J 3670. BROWN.

Please state size. (2 lbs. 8 oz.) **4.39**

Goodyear
Airfoam
Cushion insole



①
Outdoor
Romeo
4.98



②
Kid leather,
Crepe sole
3.98



① "OUTDOOR" ROMEO—WALK IN COMFORT

Low streamlined style gives perfect comfort indoors or outdoors; smart looking, too. Flexible elk-tanned leather stitched to leather-soft foam crepe sole—resilient and extra long-wearing. Smooth leather insole; leather quarter and vamp linings.

Sizes: 6, 6½, 7, 7½, 8, 8½, 9, 9½, 10, 10½, 11 and 12. Medium width (D).
49 J 3702. BROWN.

Please state size. (2 lbs. 8 oz.) **4.98**

③
Lowest-priced
Romeo
2.85



② CREPE SOLE ROMEO

Soft kid leather uppers and cushion crepe sole combined for easy comfort. Smart styling sure to please any eye.

Elastic side gores gently hug feet, "give" with every step to reduce walking fatigue.

Longwearing drill vamp linings, smooth flexible insoles.

Sizes: 6, 6½, 7, 7½, 8, 8½, 9, 9½, 10, 10½, 11, 12. Med. width (D).
49 J 3714. BROWN.

Please state size. (2 lbs. 8 oz.) . . . **3.98**

③ BARGAIN ROMEO

Extra low price for this sale only! Lined throughout.

Stretchy side gores give no-gap fit. Leather upper, compo sole, rubber heel.

Men's Sizes: 6, 6½, 7, 7½, 8, 8½, 9, 9½, 10, 10½, 11, 12. Med. (D).
49 J 3748. BROWN.

Please state size. (2 lbs. 8 oz.) . . . **2.85**

Boys Sizes: 1, 1½, 2, 2½, 3, 3½, 4, 4½, 5, 5½, 6. Med. wide width (D).

24 J 7301. BROWN.
Please state size. (2 lb. 4 oz.) **2.75**

Also in
Boy's Sizes

Merry Christmas!

Handsome, popular styles designed to give the utmost in friendly foot comfort. You'll like the prices!

Introductory low price **4.98**

GLOVE-LEATHER ITALIAN "FEATHER-WEIGHT"

New Italian styling—the "something extra" that makes this smart house-shoe right for the favorite man on your list. Indoors or out, super-soft glove leather, Nuron crepe soles give foot-easing comfort. Inserted wedge heel.

Sizes: 6, 6½, 7, 7½, 8, 8½, 9, 9½, 10, 10½, 11, 12. Med. width (D). 49 J 3771. BLACK.

49 J 3772. MAPLE (Tan).

Please state size. (1 lb. 15 oz.) **4.98**



Choice of medium or very wide widths



① Genuine Kid Everett **3.98**



② Gored crepe sole loafer **3.98**



③ Worth \$1 more **3.98**



④ Moc-type Opera **2.98**

① KIDSKIN EVERETT

Wear indoors or out—your feet take it easy in soft, supple kid leather. Smoothly lined throughout for shape-retention and comfort. Hard leather sole, rubber heel.

Sizes: 6, 6½, 7, 7½, 8, 8½, 9, 9½, 10, 10½, 11, 12. Med. width (D). Very wide width (EEE).

49 J 3757. BROWN. State size, width. (2 lbs.) **3.98**

② GORED LOUNGER

Fall Catalog price cut \$1.00! Easy on-and-off; soft, supple leather cradles your feet in comfort. Crepe soles and heels give springy cushion. Contrast stitching points up smart design.

Sizes: 6, 6½, 7, 7½, 8, 8½, 9, 9½, 10, 10½ and 11. Medium width (D).

49 J 3704. BROWN. Please state size. (2 lbs.) ... **3.98**

③ TASSEL OPERA

Tassel treatment, so popular in men's shoes, now available in an opera-type slipper. Tassels are removable—wear with or without. Smooth top grain leather upper, springy Nuron crepe sole and heel.

Sizes: 6, 6½, 7, 7½, 8, 8½, 9, 9½, 10, 10½, 11 and 12. Medium width (D).

49 J 3773. SADDLE TAN. State size. (2 lbs.) **3.98**

④ MOC-TYPE OPERA

Bargain-priced! Smart elk-tanned leather vamp; simulated leather quarter; compo sole, rubber heel.

Men's sizes: 6, 6½, 7, 7½, 8, 8½, 9, 9½, 10, 10½, 11, 12. Med. (D).

49 J 3759. BROWN. State size. (2 lbs.) **2.98**

Boys' Sizes: 2½, 3, 3½, 4, 4½, 5 and 5½.

24 J 7302. BROWN. State size. (1 lb. 12 oz.) **2.79**

Also in Boy's Sizes





1

4.98

2
Priced-Low
2.98



3
Indoor-outdoor
3.98



4
Crepe-soled
3.98

Friendly Fireside Comfort for the
SHEARLING-LINED FOR WARMTH, EASY SOFTNESS

1 INDOOR-OUTDOOR loafer, shearling lamb-lined. Top-grain leather; leather sole; no-mark rubber heel.
Sizes: 6, 7, 8, 9, 10, 11, 12. For half size, order next larger full size.
49 J 3775. Golden TAN.
State full size. (2 lbs. 8 oz.) 4.98

2 ROOMY MOC-STYLE. Water-repellent leather, lined in warm shearling lamb. Leather sole. Priced low!
Sizes: 6, 7, 8, 9, 10, 11, 12. For half sizes order next larger full size.
49 J 3738. BROWN. (1 lb. 15 oz.)
Please state full size 2.98

3 INDOOR-OUTDOOR Opera. Shearling lamb quarter, insole, cotton fleece vamp linings. Leather upper, sole.
Sizes: 6, 7, 8, 9, 10, 11, 12. For half sizes order next larger full size.
49 J 3752. WINE. (1 lb. 15 oz.)
Please state full size 3.98

4 CREPE SOLE OPERA. Shearling lamb quarter lining, insole; cotton fleece vamp lining. Soft cowhide upper.
Sizes: 6, 7, 8, 9, 10, 11, 12. For half sizes order next larger full size.
49 J 3774. BROWN. (1 lb. 15 oz.)
Please state full size 3.98



5
Cushioned Scuff
2.98

6
Cushioned Slipper
3.98

THEY'RE DEERSKIN SOFT!



5 6 SOFT BUCK-TANNED LEATHER
Ease your feet into absolute luxury—soft as deerskin! Uppers and soles crafted in buck-tanned leather, insoles cushioned with plump foam rubber. Tops in comfort, flexibility, yet priced low, to save you money.
Sizes: 6, 7, 8, 9, 10, 11, 12. For 1/2 size order next larger full size.
Medium width (D).
49 J 3770. TAN scuff (5).
State full size. (1 lb. 2 oz.) 2.98
49 J 3705. TAN slipper (6).
State full size. (1 lb. 15 oz.) 3.98



②
Crepe-soled
moc-style
2.98

③
All-felt
Everett
1.89



①
Shearling lined
2.98



④
Black or
Brown
4.98

Top Man on Your Christmas List

DESIGNED FOR GOOD LOOKS AND LONG WEAR

① LOW-PRICED SHEARLING lamb-lined gore opera. Sheepskin upper, springy crepe-rubber sole.
 Sizes: 6, 7, 8, 9, 10, 11, 12. For half sizes order next larger full size.
 49 J 3776. TAN. (1 lb. 2 oz.)
 Please state full size 2.98

② CREPE SOLE, SHEARLING lamb cuff—comfort plus style. Cotton flannel upper, cotton fleece lining.
 Sizes: 6, 7, 8, 9, 10, 11, 12. For half sizes, order next larger full size.
 49 J 3782. RED/BLACK plaid.
 State full size. (1 lb. 2 oz.) 2.98

③ FELT EVERETT. Padded platform, simulated leather soles, plaid corduroy trim. Felt content marked.
 Sizes: 6, 7, 8, 9, 10, 11. For half sizes order next larger full size.
 49 J 3784. WINE. (1 lb. 2 oz.)
 49 J 3785. NAVY. State full size . . . 1.89

④ CONTINENTAL CASUAL. Selected leather upper, Wear-o-Lite® sole, no-mark rubber heel. Strong arch shank.
 Sizes: 6, 6½, 7, 7½, 8, 8½, 9, 9½, 10, 10½, 11 and 12. Med. width (D).
 49 J 2154. BLACK. (3 lbs. 6 oz.)
 49 J 2155. BROWN, State size 4.98

RIPON CREPE SOLERS



⑤
Low
Sox
2.79



⑥ Moc
Sox 2.79



⑤⑥ CREPE SOLE NYLON MOC-SOX
 Hand-washable! Famous Ripon brand—100% spun nylon; genuine leather mudguard; springy foam crepe sole for cushioned comfort.
 HOSIERY sizes: 10, 11, 12, 13. For half size order next larger full size.
 (5) LOW SOX.
 49 J 3780. MAROON/charcoal GRAY stripe.
 49 J 3781. GREEN and WHITE stripe.
 (6) MOC SOX
 49 J 3777. MAROON. 49 J 3778. ROYAL BLUE.
 49 J 3779. CHARCOAL GRAY. (Dk.)
 State full hosiery size. (1 lb. 2 oz.) 2.79

See Page 287 for Spiegel Budget Power Plan . . . have more, enjoy more



①
15.95

Non-skid crepe
Squeegee sole
cleans itself,
cushions foot.

②
Silicone-treated
blucher oxford
9.95



Silicone-Treated

Leather repels water yet lets air in—stays flexible and new-looking

① SYLFLEX SILICONE TREATED leather engineer boot—a full pound lighter than regular engineer boot, yet extra rugged. Squeegee crepe sole gives extra good traction, expels mud. Shape-retaining Polyethylene counter, steel shank, Good-year welt. 11-in. height. Wide width. Sizes: 6, 6½, 7, 7½, 8, 8½, 9, 9½, 10, 10½, 11, 12. 49 J 3379. Brown. State size. (5 lb. 6 oz.) . . . 15.95

② DRESS SHOE RESISTS WATER 3 WAYS: Silicone-treated leather, stormwelt, rubber "gasket" midsole. Leather sole, rubber heel. Sizes: 6, 6½, 7, 7½, 8, 8½, 9, 9½, 10, 10½, 11, 12. Medium width to fit C, D, E. 49 J 2340. BROWN. 49 J 2341. BLACK. Please state size, width. (3 lbs. 6 oz.) 9.95



LOWEST
PRICES
WE KNOW
OF FOR
THESE TWO
BOOTS!

③
8.45

④
6.59

TWO POPULAR ENGINEER STYLES

- Unusually high quality at this low price
- Built to hold up under toughest conditions
- Wax-treated leather uppers shed water, dirt
- Double soles—sturdy built-up logger heels

③ ZIP STYLE—EASY-ON. Step into these goodlooking huskies—zip 'em up . . . no tugging . . . your boots are on and you're ready to go. Comfortable as can be, soft upper leather hugs your foot and ankle, holds in warmth on cold winter days. Double-tanned vamp; sweat resistant drill vamp lining. Double composition sole, rubber heel lift. Strong nailed and stitched construction. 11-inch height. (6 lbs. 6 oz.) Sizes: 6, 6½, 7, 7½, 8, 8½, 9, 9½, 10, 10½, 11, 12. Wide width. 49 J 3380. BLACK. Please state size 8.45

④ OUR LOWEST PRICED ENGINEER boot features top quality at special saving price! Soft, supple leather gives warmth, protection against moisture and dirt. Ankle and top straps adjust to give you perfect fit—enhance boot appearance, too. Double-tanned vamp; sweat resistant drill vamp lining. Double composition sole, rubber heel lift, 11-inch height, tough nailed and stitched construction. Sizes: 6, 6½, 7, 7½, 8, 8½, 9, 9½, 10, 10½, 11, 12. Wide width. 49 J 3338. BLACK. Please state size. (6 lbs. 6 oz.) 6.59

Budget Power can bring you more of the good things of life . . . today

Weather Cold'r Hot

HERE'S "INSULATED" COMFORT

3-LAYER PROTECTION MAKES THE DIFFERENCE

- 1—Double-tanned leather upper—weather resistant and durable
- 2—Firestone foamex rubber—lightest, most flexible insulation known
- 3—Glove-leather lining for the softest comfort—treat a foot ever had!



- ① Leather
- ② Foam Rubber
- ③ Glove Leather



Insulating
Cork-and-
Rubber Sole—
Light Weight,
Durable

FEET WON'T GET COLD IN THESE BOOTS! Sportsmen Outdoorsmen... here's a "temperature-controlled" 9 inch high boot you'll wear through sub-zero weather in ideal comfort. Scientifically designed to meet any weather condition—three-layer insulation locks out heat in summer, cold in winter. Double-tanned leather resists water, soil and acids. Non-skid cork-and-rubber sole is light, tough, water-proof. Cushion insole, steel arch shank, rubber heel. Famous Goodyear welt construction. Sizes: 6, 6½, 7, 7½, 8, 8½, 9, 9½, 10, 10½, 11, 12. Wide width. (4 lbs. 12 oz.) 49 J 3381. BROWN 9-in. ht. **State Size... 14.95**



Insulated Boot
14.95

MILIUM INSULATED

- ✓ 1st layer—Flexible leather
- ✓ 2nd layer—Milium insulator
- ✓ 3rd layer—Smooth drill lining



8-in.
height
11.95

6-inch
height
9.95

MILIUM INSULATED LININGS—WARMTH WITHOUT WEIGHT

If you work outdoors in the wintertime, here's a fine shoe for you. Milium gives efficient insulation against cold yet adds little bulk, little weight. Oil-treated, double-tanned leather resists water, soil, barnyard acids—stands up to roughest scrapes. Thick cork-and-rubber sole is lightweight, waterproof, longwearing—resists slips.

Cushion insole gives soft comfort. Steel arch shank; Goodyear welted.
Sizes: 6, 6½, 7, 7½, 8, 8½, 9, 9½, 10, 10½, 11, 12. Wide width.

49 J 3017. BROWN. 6-in. ht.
Please state size. (4 lbs. 8 oz.)... **9.95**

49 J 3018. BROWN. 8-in. ht.
Please state size. (4 lbs. 12 oz.)... **11.95**



Our
lowest price
ever!
9.95

"DRESSED UP" COWBOY BOOT

Priced mighty low, but the quality's high! Elk-tanned leather vamp and leather top stay new-looking despite long wear, bring admiring glances wherever you go. Oak-leather sole with underslung cowboy heel. Pegged cowboy shank. Drill vamp lining; famous sturdy Goodyear welt construction.

Sizes: 6, 6½, 7, 7½, 8, 8½, 9, 9½, 10, 10½, 11, 12. Medium width (D).

49 J 3382. BROWN. 10-in. height.
Please state size. (5 lbs. 6 oz.)... **9.95**

See Page 287 for Spiegel Budget Power... stop dreaming... start living



Thermowear



④
17.95

① ② THERMOWEAR CLOTHES

- Use "Dead air" spaces for insulation
- Are super warm in sub-zero cold

① **FROST-BAR COAT.** Designed for U. S. Arctic Forces, now styled for civilians . . . you stay warm at 30° below. Nylon coat with knitted fleece lining. Hugs body, yet allows freedom of action. Contour ridges allow "dead air" spaces to store body warmth. State Tan or Red, and coat sizes (no size 48) below.
50 J 629. Postpaid. 39.95

② **SEABEE PANTS.** Neoprene coated nylon, knitted fleece lining. 2 side pockets. "Swing knee" design. State Red or Tan, pants size below. Ppd.
50 J 628. (No size 30) 39.95

③ ④ WOOLMASTER WEAR

- Finest 100% virgin wool clothes
- Dacron insulated . . . 74% warmer

③ **HUNTING COAT.** Rugged, warm; bi-swing shoulders; zipper front; worsted knitted wristlets to seal in warmth. Warmer-than-wool Dacron insulation. Full cut to avoid binding. Rubberized, bloodproof game pocket, 6 pockets in all. State chest size below.
50 J 630. Plaid. (5 lbs.) 29.95
50 J 631. Scarlet. (5 lbs.) 29.95

④ **HUNTING PANTS.** Knitted bottom; zipper fly. 5 pockets. 32-in. inseam. State waist size below. (3 lbs.).
50 J 650. Plaid. 17.95
50 J 651. Scarlet. 17.95

⑤
Virgin Wool
Outfits
26.95

FAMOUS CHIPPEWA QUALITY



⑥
16.95

⑥ 9-IN. FEATHERWEIGHT

A Chippewa boot crafted of finest full grain oil tanned Brazil leather uppers . . . water repellent, extremely pliable. Jumbo rubber crepe soles, wedge heels; Goodyear welt. Leather insole; laces. Sizes: 6½-7-7½-8-8½-9-9½-10-10½-11-12. Wide width. State regular shoe size. Brown.
50 J 407. (4 lbs. 8 oz.) 16.95

How To Order Hunting Clothing
MEN'S COAT SIZES: 36-38-40-42-44-46-48 in. chest. Measure around chest (under armpits), over shoulder blades and OVER clothing to be worn under coat. Order this size. If in-between, order next larger size.
MEN'S PANTS SIZES: 30-32-34-36-38-40-42-44 in. waist.
MEN'S CAP SIZES: 6¾-6⅞-7-7¼-7½-7⅝-7⅞. Order regular hat size.

⑤ QUALITY 100% VIRGIN WOOL OUTFITS

- Rubberized, bloodproof game pocket; zipper closing
- Finest virgin wool . . . water repellent . . . reinforced

COAT: Heavy cotton suede lining; knitted wristlets. Hand warmer, breast, shell pockets. State chest size at left.

PANTS: Knitted bottom. Zipper closing fly; suspender buttons; belt loops; 5 pockets; 33 in. inseam. State waist sizes listed at left.

BREECHES. (Not shown). Double knee patches; laced bottoms; zipper fly; 5 pockets; suspender buttons; belt loops; 27-in. inseam. State waist sizes at left.

CAP Cotton suede lining; ear flaps; non-breakable visor. State cap sizes at left.

BUY 2-PC. OUTFIT AND SAVE \$4.95. Deluxe coat plus knit bottom pants. State chest and waist sizes.
50 J 643. Plaid Outfit. (7 lbs. 8 oz.) 26.95
50 J 644. Scarlet Outfit. (7 lbs. 10 oz.) 26.95
50 J 641. Plaid Coat only; 32 oz. wool. (4 lbs. 5 oz.) 19.95
50 J 640. Scarlet Coat only; 28 oz. wool. (4 lbs. 10 oz.) 19.95
50 J 654. Plaid Pants only; 32 oz. wool. (2 lbs. 10 oz.) 11.95
50 J 653. Scarlet Pants only; 28 oz. wool. (3 lbs.) 11.95
50 J 655. Plaid Breeches only; 32 oz. wool. (2 lbs. 12 oz.) 11.59
50 J 716. Scarlet Cap only; 28 oz. wool. (7 oz.) 1.69

Make this
your richest
Christmas ever
with the
Spiegel
Budget
Power
Plan



You can give more generously . . . have more fun . . . and look your loveliest in smart new Spiegel fashions . . . thanks to the wonderful new Spiegel Budget Power* Plan. No need to disturb your savings . . . use the full buying power of your Credit Trust Fund.

Yes, you can use your credit with peace of mind . . . protected by free Prudential Life Insurance. See Page 287 for details.

*Trademark of Spiegel, Inc.
SPIEGEL • 67

All Wool Jersey

To brighten a wintry wardrobe
with rich color and pretty trim

Collar and
Cuffs for trim

4
2-way
blouse
4.98



Remove
Collar
and
Cuffs

5
5.98



6
3.98



7
3.98 Also larger sizes



8
3.98



9
3.98



The Holiday Look

In fashion's new fancies, with low prices to gladden your budget

Remove collar for "pearl" trim

①
2-way blouse
5.98

Wear gay frill of a collar

① 2-WAY NYLON TRICOT sheer, with grosgrain trim on collar she can take off—to show a demure mandarin neckline! Crystal pleated front, back, over plain nylon sheer. $\frac{3}{4}$ push-up sleeves. Hand washable. White, Pink or Lt. Blue. Sizes to fit 32-34-36-38 inch bust. (8 oz.)
12 J 5127. State size, color . . . 5.98

② VELVETEEN BOLERO includes its own pleated cummerbund . . . smart and new, to dress her in the luxurious spirit of the Season! Rich twill-back cotton velveteen with rayon taffeta lining. Dry clean. Black. Sizes: Sm. (fits 34 in. bust); Med. (36-38); Large (40). (12 oz.)
12 J 5129. State size Set 6.98

③ SATIN SMOOTHIE . . . long line overblouse that achieves a svelte silhouette and a quiet kind of coquetry! High neck front points to semi-deep "V" in back . . . hemline tie adds final touch. Acetate satin. Dry clean. Champagne (lt. beige), Ice Blue (pale) or Dusty Pink. Sizes to fit 32-34-36-38 inch bust. (6 oz.)
12 J 5128. State size, color . . . 5.98

Styles 4 thru 9 on facing page

④ ALL WOOL JERSEY blouse with 2 pretty ways . . . with collar and cuffs, bandbox-bright in crisp white pique; or without for dreamy smooth simplicity. $\frac{3}{4}$ sleeves. Dry clean. Black, Red, Periwinkle Blue (med.) or Coppertint (med. brown). Sizes to fit 32-34-36-38 in. bust. (13 oz.)
12 J 5121. State size, color . . . 4.98

⑤ HOLIDAY HIGHLIGHTS of shimmering rhinestones and dainty seed "pearls" trim mandarin collar, cuffs . . . spark the clean simplicity of soft wool jersey blouse. Back zips; $\frac{3}{4}$ sleeves. Dry clean. Pale Pink, Black Red or Ice Blue (pale). Sizes to fit 32-34-36-38 in. bust. (9 oz.)
12 J 5125. State size, color . . . 5.98

⑥ WOOL JERSEY OVERBLOUSE. Fashion's darling at a little-bit of a price! Elbow length push-up sleeves; ribbed waist, cuffs, collar for snug fit. "Jewel" buttons down front. Dry clean. Red, Black, Moss Green, Periwinkle Blue (med.). Sizes to fit 32-34-36-38 inch bust. (9 oz.)
12 J 5119. State size, color . . . 3.98

⑦ BUTTONS AND BEADS on wool jersey . . . tiny seed "pearls" and self covered buttons on white pique—the collar, cuffs! $\frac{3}{4}$ sleeves. Dry clean. Moss Green (shown), Black, Mauve (pink), Turquoise. Sizes to fit 32-34-36-38-in. bust. (9 oz.)
12 J 5122. State size, color . . . 3.98

LARGER SIZES to fit 40-42-44-46 in. bust. Colors above. (11 oz.)
12 J 5123. State size, color . . . 4.98

⑧ DOUBLE-DIP COLOR confection in wool jersey . . . brushed with white angora at collar, pockets. Button front; $\frac{3}{4}$ sleeves. Dry clean. Black with Heather Gray; Brown with Beige; Charcoal Gray (dk.) with Pink; Purple with Mauve (pink). Sizes to fit 32-34-36-38 in. bust. (13 oz.)
12 J 5124. State size, color . . . 3.98

⑨ LONG TORSO overblouse in wool jersey—very right for slacks, fancy pants, skirts! Rib knit trim . . . fancy buttons add a debonair touch. $\frac{3}{4}$ sleeves. Dry clean. Periwinkle Blue (shown), Black, Moss Green or Red. Sizes to fit 32-34-36-38 in. bust. (13 oz.)
12 J 5120. State size, color . . . 3.98
(Pin on item 9 not included.)

② Bolero includes Cummerbund 6.98

③
5.98

See Page 287 for Spiegel Budget Power . . . a better way to better living

THE
*Quilted
Look*

... IN HOLIDAY
SEPARATES

⑤
2 Pc.
12.95



⑥
2 Pc.
14.95



⑦ Blouse
4.98

⑧ Felt Skirt
9.98

Cummerbund
1.98

The
Glamour
Look
In
Sweeping
Separates



⑨ Blouse
4.98

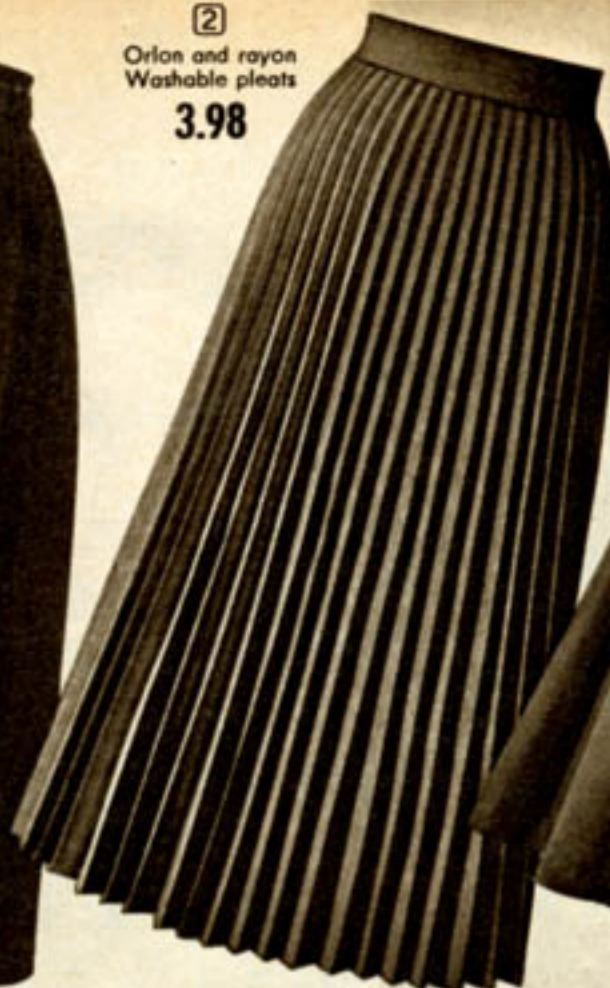
⑩ Washable
Wool
Skirt
8.98

Cummerbund
1.98

①
Velveteen
8.98



②
Orlon and rayon
Washable pleats
3.98



③
Gabardine
3.98
Also in
larger sizes



Skirts She'll Love to Wear

① **BLACK VELVETEEN!** Subtle flatterer, with daytime or festive blouses. All around, soft unpressed pleats contrast a dainty waist held to a minimum by self belt. Twill back fabric. Back closing. Dry clean. Waist sizes: 24-26-28-30 inches. Shipping weight 1 lb. 12 oz.
12 J 5140. State size... 8.98

② **PERMANENTLY PLEATED** skirt of 50% orlon and 50% rayon to hand wash, drip dry and wear. Proportioned to fit without altering. No ironing; no dry cleaning. Med. Gray, Moss Green (med.) or Turquoise. Waist sizes: 24-26-28-30 in. (1 lb. 2 oz.)
SHORT. Length 28½ in.
12 J 5136. State size, color... 3.98
AVERAGE. Length 30½ in.
12 J 5137. State size, color... 3.98
TALL. Length 32½ in.
12 J 5138. State size, color... 3.98

③ **GORED,** sweeping rayon sheen gabardine skirt. Side zip. Plastic belt included. Black, Med. Gray, Navy or Dk. Green. Waist sizes: 24-26-28-30 inches. State size and color.
12 J 5141. (1 lb. 2 oz.)... 3.98
Larger waist sizes: 32-34-36-38 in. State size; colors as above.
12 J 5142. (1 lb. 4 oz.)... 4.98

④ **CHROMSPUN TAFFETA** skirt with its own crinoline, beruffled in colorful nylon net... a flirty hankie pinned at waist for further contrast. Four graceful front pleats. Side zipper closing. Of rich rayon and acetate taffeta, dry cleaning recommended. (Crinoline petticoat attached.)
Colors: Black with Turquoise, Red or Pink. Waist sizes: 24-26-28-30 inches. State size and color. (1 lb. 4 oz.)
12 J 5139... Complete 5.98



④ Taffeta with crinoline 5.98

First In Fashion Gift Ideas... Priced Low—5 THROUGH 10 OPPOSITE

⑤ **ALL WOOL JERSEY.** Fashion's pet... quilted for the costly look of '56 (but not the price). Pampered, indeed, is she who finds this luxury casual ensemble under her Christmas tree! All over quilted, taper slim fancy pants, slit at calfs for easy comfort; back zippered. Boat neck, Italian inspired over-b blouse has quilted cuffs. Worn tucked in or not. Pins not included. Dry clean.
Colors: Avocado Green (shown), Cornflower Blue (med.) or Charcoal Gray (dk.). Misses sizes: 10-12-14-16-18. Shipping weight 1 lb. 10 oz. State size, color.
15 J 1622... 2 pc. 12.95

⑥ **WOOL JERSEY** separates take to quilting in a most luxurious manner. Elegant in forecast colors to hail the festive season... all over quilting gives buoyancy to the wide sweep of the swirly skirt. Quilted collar and cuffs coordinate the charming blouse. Self button trim. Elbow length sleeves. Independently beautiful worn with other separates... fashion-perfect together. Makes an exciting gift! Belt not included. Dry clean.
Colors: Amber Brass (shown) or Cornflower Blue (med.). Misses sizes: 10-12-14-16-18. State size, color.
Sh. wt. 2 lbs.
15 J 1623... 2 pc. 14.95

⑦ **SATIN TRIMS WOOL** jersey blouse! Rayon satin appliques and buttons accent scoop neck. Elbow sleeve. Dry clean. Powder Blue (shown), Black or Gold. Sizes to fit 32-34-36-38 in. bust. State size, color.
12 J 5131. (9 oz.)... 4.98

⑧ **PRINTED FELT SKIRT!** Exotic, richly colorful hand screen print of 50% wool, 50% rayon faille. Side zip. Belt shown sold below. Dry clean. Black with multi print. Waist sizes: 22-24-26-28-30. State size.
12 J 5132. (1 lb. 11 oz.)... 9.98

⑨ **CREPE BACK SATIN** party blouse tabbed for giving. Push up ¾ sleeves, mandarin collar, button trim. Hand washable rayon! Colors: White (shown), Lt. Blue or Pink. Sizes to fit 32-34-36-38 in. bust. State size, color.
12 J 5133. (6 oz.)... 4.98

⑩ **WASHABLE SANFORLAN** flannel skirt... 85% wool, 15% nylon... just drip dry and wear. Buttons and encircling bands of rich rayon faille emphasize its sweeping fullness. Side zip. Belt shown sold below. Black. Waist sizes: 24-26-28-30 in. State size.
12 J 5134. (1 lb. 8 oz.)... 8.98

VELVETEEN CUMMERBUND; lined. Back Buckle. Black (shown) Avocado Green (med.) or Peacock Blue (turq.). Waist sizes: 22-24-26-28-30 in.
12 J 5135. State size and color. Shipping weight 4 oz... 1.98

See Page 287 for Spiegel Budget Power Plan... have more, enjoy more





1 Cashmere 18.98



3 Jewelled orlon 8.98



2 Orlon Pullover 4.88 Cardigan 6.88

Gift Sweaters

Choose Orlon or Cashmere Gifts to Warm Her Heart



4 V-neck orlon 3.98



5 "Overblouse" Inspired 3.98



6 Angora trimmed 2.98

Full Circle of Glamour

... In Holiday Separates



Festive go-togethers to
make her dance with joy ...
Styled to her taste ...
handsomely within your budget

THE SWEATER ... hi-bulk orlon, holiday fashioned for day through datetime wear. The latest—glamorous scooped neck, front and back. Quality orlon washes, dries in a jiffy. Ribbed cuffs, waist. Hand washable. White, Black or Turquoise. See size chart 10, page 289. Bust sizes: 34-36-38-40 inches. 15 J 1616. State size and color. (5 oz.) 2.98

(Belt shown is not included)

THE SKIRT ... flattering full circle print skirt in heavenly cotton felt ... whirls you merrily through the season. Side zipper, 1 button waist. Never needs ironing. Hand washable. Shrinkage less than 2%. White, Orange, or Turquoise, each with Black. Waist sizes: 22-24-26-28-30 inches. 12 J 5130. State size, color. (1 lb. 8 oz.) 3.98

Sweaters Designed for Giving. STYLES 1-6 ON FACING PAGE

① FULL FASHIONED CASHMERE sweater ... something special for someone special. Fashioning details for luxurious fit. Precious imported cashmere ... silky-soft against her skin. Face-flattering collar; five button opening. Cuffed sleeves. Dry clean. Colors: Beige, White or Black. Bust sizes: 34-36-38-40 inches. See size chart 10, page 289. Shipping weight 6 oz. 15 J 1624. State size, color 18.98

② FULL FASHIONED LUXURIOUS ORLON. ... looks, feels like cashmere. Rib knit trim. Hand washable. Moss Green, Periwinkle Blue (med.), White or Pink. Bust sizes: 34-36-38-40 inches. See Chart 10, p. 289.

CARDIGAN. Long sleeves. (8 oz.) 15 J 1621. State size, color 6.88

PULLOVER. Crew neck, short sleeves. 15 J 1620. State size, color. (6 oz.) ... 4.88

③ HOLIDAY JEWELLED! Long sleeve hi-bulk orlon cardigan takes on after-five glamour. Boucle collar, button front aglitter with pretend pearls, rhinestones, metallic trim. Interlock knit. Ribbed waist, cuffs. Hand washable. Colors: Lt. Blue, Pink or White. Bust sizes: 34-36-38-40 inches. Size chart 10, page 289. Shipping wt. 1 lb. 15 J 1618. State size, color 8.98

④ CLASSIC V-NECK sweater ... in her favorite colors. Fancy ribbed neck, rib knit edges. Hi-bulk orlon in fine gauge knit. Won't shrink, resists moths ... never needs blocking. Scarf shown not included. Hand washable. Colors: Periwinkle Blue, White, Avocado green (med.) or Apricot. Bust sizes: 34-36-38-40 inches. See size chart 10, page 289. Shipping weight 6 oz. 15 J 1625. State size, color 3.98

⑤ TORSO "OVERBLOUSE" sweater ... big fashion news timed for Christmas. Fancy rib knit trim; V-neck. Super interlock orlon ... washes easily, dries quickly. Scarf shown not included. Hand washable. Colors: Spice Pumpkin (shown), White, Avocado Green (med.) or Turquoise. Bust sizes: 34-36-38-40 inches. See How-to-Order, chart 10, page 289. Shpg. wt. 4 oz. 15 J 1617. State size, color 3.98

⑥ SOFTEST ANGORA nestles smartly around turtle neck of all orlon sweater. A versatile charmer ... can be worn nearly anywhere, anytime. An ever welcome gift beauty. Rib knit cuffs, waist. Hand washable. Colors: Pink, Lilac or Turquoise. Bust sizes: 34-36-38-40 inches. See How-to-Order, chart 10, page 289. Shipping weight 5 oz. 15 J 1619. State size, color 2.98

See Page 287 for Spiegel Budget Power ... stop dreaming ... start living





Order regular dress size. All coats sized to fit over suits.

Precious Warmth... A Gift She'll Cherish

Silky genuine Mouton Lamb, luxury-look miracle Lurana, the textured richness of pure Alpaca. Each a wonderful buy... a gift to be proud of

FABULOUS FUR-LIKE BEAUTY

Heavenly soft Lurana, the miracle fabric that's fur in everything but fact! Looks like fur in all its glory... has the feel, the rich sheen of expensive beauty. Yet here it is at a cloth coat price! Warm 100% nylon pile face (cotton back 25% of fabric). Printed rayon satin lining.
COLORS: Platinum (lt. gray), Beige or Black. Sizes for Misses and Juniors: 10-11, 12-13, 14-15, 16-17, 18. (6 lbs.)
 13 J 7902. State size, color.....55.00

SILKY MOUTON LAMB TOPPER

Genuine fur... the most precious of all gifts! She'll love and wear this luscious dyed Mouton processed lamb (origin U.S.A.) for years to come! Classic shawl collar, turn-back cuffs, hook and eye closing at neck. 25 inches long, lined in rayon and acetate taffeta.
COLOR: Brown only. Sizes for Misses and Juniors: 10-11, 12-13, 14-15, 16-17, 18, 20. State size. (6 lbs.)
 13 J 7900...Fed. Excise Tax incl.50.00

GLAMOROUS PALE ALPACA

Deep textured beauty in a chic one-button drape coat with shawl collar, turn-back cuffs. A loving gift, a wonderful buy. Pure Alpaca face (cotton back is 62% of fabric)... only finest quality can be used for such lovely pale colors. Temp Resisto insulated rayon and acetate lining.
COLORS: Beige or Platinum (lt. Gray). Sizes for Misses and Juniors: 10-11, 12-13, 14-15, 16-17, 18, 20. (6 lbs.)
 13 J 7904. State size, color.....34.95



Order regular dress size. All coats sized to fit over suits.

Slim Line Beauty... A Gift of Fashion

Take the new straight line to a fashionable gift! Choose a Cashmere blend, a Persian Lamb trim, a Wool Fleece . . . each such a fine value!

LUXURIOUS CASHMERE BLEND

The narrow silhouette . . . beautifully executed in 90% Wool, 10% Cashmere blend. Remarkably detailed with a bee-line of buttons, wide round collar, dropped slant pockets and tapered sleeves to push up or wear long. First choice of fashion this year! Rayon satin lined. Interlined.
COLOR: Banker's Gray (dk.), Peacock Blue (med.), Beige. Sizes for Misses and Juniors: 10-11, 12-13, 14-15, 16-17, 18. (6 lbs.)
 13 J 7906. State size, color 37.75

PERSIAN LAMB TRIM COAT

The chic new slender look . . . perfect in every detail. Gray dyed Persian Lamb (origin Afghanistan) circles the neckline, bands the tapered sleeves. A new note in the dropped slant pockets. Luxurious 80% Wool with 20% Cashmere, rayon satin lined, pure lambs wool interlining.
COLORS: Med. Gray or Peacock Blue (med.). Sizes for Misses and Juniors: 10-11, 12-13, 14-15, 16-17, 18, 20. (6 lbs.)
 13 J 7908. State size, color 59.75

PURE WOOL FLEECE BEAUTY

Slim as a blade and ever so fashionable, yet cut free and easy! The slim line coat in soft pure wool fleece with demure shawl collar, panel pockets ending in a side tab, and tapered cuffed sleeves. Very new! Iridescent rayon and acetate taffeta lined, warmly interlined.
COLORS: Lt. Gray or Med. Blue. Sizes for Misses and Juniors: 10-11, 12-13, 14-15, 16-17, 18, 20. (6 lbs.)
 13 J 7910. State size, color 29.95

See Page 287 for Spiegel Budget Power Plan . . . a wonderful way to buy



A
9.95



B
Hat
4.95
C
Bag
2.95

D
Belt
4.95



E
Hat
5.95
G
Bag
5.65

H
Gloves
2.95

Coloramic Accents... and She'll Love You for Them

A FUR-FABRIC JACKET so much like real Broadtail you must touch it to be sure! Rayon fabric; "V" neck, new square collar. Waist button. Soft bat-wing push-up sleeves. Rayon taffeta lining. Small (10-12); Med. (14); Large (16). Colors: White, Brown or Black. State size, color. 19 J 9422. (1 lb.).....9.95

B C D FASHION'S NEW CURVED LINE. Hat, bag, belt in shining Black rayon satin. Wired hat a wisp of rhinestone-studded leaves. Bag has dramatic new rigid handle, scalloped edge. Comb in pocket, rayon lined. Front-scalloped contour belt with rhinestones; 2-in. wide front, 1 1/2-in. back. Leather lining. Waist sizes: 22, 24, 26, 28, 30-in. 19 J 9420M. (B) HAT fits all sizes. (5 oz.).....4.95
19 J 8115M. (C) BAG. 9x7 1/2-in. high. (1 lb.)....2.95
19 J 8517M. (D) BELT. State waist size. (8 oz.)...4.95

E G H RAYON VELVET Hat, Bag, Gloves—jet Black. Wired hat with rhinestones; 1 size fits all. Clutch has rhinestone lock, rayon satin lining; mirror, comb. Shirred 15-in. gloves, nylon palms. Sizes: 6, 6 1/2, 7, 7 1/2, 8, 8 1/2-inch hand. 19 J 9421M. (E) Hat. (8 oz.).....5.95
19 J 8114M. (G) Bag. 9x5-in. (1 lb.).....5.65
(H) Gloves. State size. 19 J 8758M. (3 oz.).....2.95

LITTLE LOOKS THAT MAKE BIG DIFFERENCES—See selections 1 thru 4 at Right

1 THE LEATHER LOOK AT ITS CHARMING BEST

IMPORTED ITALIAN BAG of finest aniline dyed saddle leather. Meticulously detailed; hand stitching, "gold" lock. 19 J 8150. Natural only. 11x5x10-in. high. (1 lb. 8 oz.)....14.95

8 1/2-IN. PECCARY PIGSKIN Gloves; elastic wrist shirring. Sizes: 6, 6 1/2, 7, 7 1/2, 8, 8 1/2-in. hand. Cork or Oatmeal (Light Beige). Shpg. wt. 3 oz. 19 J 8756. State size, color.4.95

PURE LINEN Handkerchief. Leaf print border, hand rolled hems. 15-in. square. Green, Red, Medium Gray. Please state color. Shpg. wt. 2 oz. 19 J 9333.....1.00

3 THE LUXURY LOOK—THE LUXURY FEEL

SUPERB ALLIGATOR BAG. Paris-inspired new long line, gleaming selected skins. Leather lining, coin purse. 3 pockets, 1 zippered. "Gold" corners, lock. Brown; 12x5-in. (1 lb. 5 oz.) 19 J 8151M.....29.50

CULTRA-PEARL BY CORO. Dipped simulated pearls. 22K Gold-plated trim. Y54 J 9767. Pin. (6oz.) 5.95
Bracelet. 54 J 9766. (4 oz.).....5.95
Earrings. 54 J 9765. (6 oz.).....2.95

GENUINE ALLIGATOR PUMP. Full leather lining, leather sole. Tapered 3-in. heel. (1 lb. 10 oz.) Sizes: 5, 5 1/2, 6, 6 1/2, 7, 7 1/2, 8, 8 1/2, 9. Narrow width (AA); Med. (B). 14 J 5862M. BROWN. State size, width19.95

NEW COAT GLOVE styled by Wear-Right®. Handsewn double woven cotton, 14-in. long. Sizes: 6, 6 1/2, 7, 7 1/2, 8-in. hand. Colors: Gold, Black or White. Please state your size and color 19 J 8757. (3 oz.).....3.95

SCARF imported from France. 45-inch long swirl of Brown-flecked Gold rayon and silk satin. Fringed edges; 9-inches wide. Makes a luxurious gift. 19 J 9334. (3 oz.).....2.25

2 THE LOOK OF COLOR—BRIGHTLY FLATTERING

DOUBLE WOVEN COTTON GLOVES by Wear Right that add the bright emphasis of color to winter outfits. Finest quality double woven cotton expertly sewn by hand—easy to hand wash sparkling fresh. About 8 1/2-in. long. Sizes to fit 6, 6 1/2, 7, 7 1/2, 8-in. hand. Colors: Aqua, Orange or Pink. State size and color. 19 J 8764M. Shpg. wt. 3 oz.....2.95

PURE SILK CHIFFON SCARF to match gloves. Imported. Hand-rolled hems, about 23-in. sq. Colors: Aqua, Orange or Pink. 19 J 9335M. State color. (2 oz.).....1.00

4 FASHION ACCENTS OF THE EXOTIC EAST

SARI-STOLE—HANDWOVEN IN INDIA. An exotic breath of the East—yours in this glamorous pure silk sari-scarf threaded through with Gold. Soft as mist; hand rolled hems. 22x77-inches long. In Blue or Red. Please state color. 19 J 9336. Shpg. wt. 3 oz.....4.95

VERSATILE Expansion Belt. Plastic beads on Gold metal. Use as choker, belt, bracelet. Small (fits 22-24-in. waist). Med. (26-28), Lg. (30-32). Colors: Orange, Turquoise, White Pearl. Please state size and color. 19 J 8516. (8 oz.).....2.25

IMPORTED SILK SCARF handwoven in far-away India. Brilliant flash of pure silk spiced with Gold thread. Hand rolled hem; 20-in. square. Colors: Pink, Purple, Green or White. Please be sure to state color. 19 J 9337. Shpg. wt. 3 oz. 1.95

ORIENTAL BOX. Little oval box styled in opulently printed velveteen. Luxuriant rayon satin lining, mirror inside lid. Snap closing, coin purse. 8x5x3 inches deep. Colorful print on Beige ground (as shown). 19 J 8155. (1 lb. 5 oz.)....5.65

HANDMADE COLLARS imported from exotic India—a treasure to give or keep. Beautifully beaded rayon satin, heavy metallic thread. Colors: White, Blue or Black. Please be sure to state color. Shipping weight 4 oz. 19 J 9338.....2.95



1 THE LEATHER LOOK



2 THE LOOK OF COLOR



3 THE LUXURY LOOK

4 LOOK OF THE NEAR EAST

10% Federal Excise Tax Included Where Applicable On This And Facing Page

See Page 287 for Spiegel Budget Power Plan... increase your buying power





7
Head Stole
1.98



8
New Fur-Fabric
5.95



9
Jersey And Rhinestones
6.95



10
Gay Velveteen 5.95



12
Dacron Stole 2.98



13
Stole-Cap 2.50



11
Hood and Gloves 4.75



14
Cozy Knit Cap 1.85

See Page 287 for Spiegel Budget Power... a better way to better living

The Indian Touch!

East meets West in lovely at-home creations . . .
gifted with luxuriant airs . . . excitingly flattered
by specially fashioned jewelry and mules.



CORO INDIA JEWELRY . . . goes with so many outfits. Exotic multi-color plastic beads, stones; simulated pearls. Gold plated chain, trim. Clamp back earrings. Adjustable necklace. Shpg. wt. 5 oz.
V54 J 9870. Necklace only . . . 5.95
V54 J 9871. Bracelet only . . . 2.95
V54 J 9872. Earrings only . . . 2.95

INDIA INSPIRED HOSTESS COAT . . . lends gracious note to holiday entertaining. Far Eastern excitement . . . exquisitely fashioned of combed cotton and acetate. Luxurious "gold" border print at hem of full gathered skirt overrides all over gold print pattern. Softly gathered "sari" sash ties at side. Tiny dolman sleeves with adjustable tie. Inside tie, snap closing at waist. Wash separately by hand. Colors: Cream (as shown) or Aqua.
Misses' sizes: 10-12-14-16-18. (1 lb. 7 oz.)
16 J 5940. State size, color 9.98

"GOLDEN EYE-LASH" mules . . . new, glamorous! Gold kid; leather lined. Composition sole, 2-in. wedge heel. Women's sizes: 4, 4½, 5, 5½, 6, 6½, 7, 7½, 8, 8½, 9.
Med. width B.
24 J 7986. GOLD. State size, (1 lb.) 7.95

COORDINATED LEOTARD AND SKIRT! Oriental enchantment caught in heavenly-hued gift twosome . . . sure to thrill the heart of that someone special. Ballet-type leotard . . . for at-home comfort, dramatic new flattery. Of skin-soft, full-bodied nylon and acetate jersey. Full length back zipper from all around scoop neck. Gentle shirring, self-material tie at mid calf. Jersey belt with self fabric covered buckle.

Versatile button front skirt pairs off wonderfully with her favorite blouse, too. Fully gathered . . . falls from wide waist band in soft graceful folds. Rich silk screen print on lustrous rayon faille. Dry clean.
Color: Plum print skirt. Plum leotard (as shown).
Misses sizes: 10-12-14-16-18. Shipping weight 2 lbs. 6 oz. State size.
16 J 5941 2 pc. outfit 16.98

See Page 287 for Spiegel Budget Power Plan . . . have more, enjoy more



And So ... To Bed

Gift-pretty loungers ...
budget-pretty prices ...
shown on facing page

5 "ITALIAN" PJ'S... newest splash in lounge and night-wear. Full length trousers turned out in festive stripes taper smartly...casual-cut and comfy, pull-over top looks debonair with striped cowl collar, snug cuffs. Elastic waist-band on trousers. Sleeves push up. Knit combed cotton. Black with Blue Stripes or Black with Maize Stripes. Wash separately. Sizes: Small (fits 32-34 in. bust); Med. (36-38) or Large (40). (1 lb. 8 oz.) State size and color. 16 J 5926.....4.98

6 3-PIECE SET ... Baby Doll tradition prettily realized in soft and filmy nylon tricot. Regular full length trousers with elastic waist inter-change with panty bottoms for 2 sleep outfits she'll love! Button front jacket has squared neckline daintily trimmed with nylon sheer ruffles, cord tie. Panty with elastic waist, leg openings; double crotch; ruffle trim. Lilac or Mint Green (lt.). Sizes to fit 32-34-36-38 in. bust. (1 lb. 4 oz.) State size and color. 16 J 5927.....5.98

7 TV SPRAWLERS...designed along relaxed lines that insist on comfort. Smock size jacket flared softly in back, with wide elbow sleeves ... for leisurely lounging at its best! Trousers with covered elastic at waist sides, 2 gripper snaps. Print jacket has solid trim, a dash of ric-rac. Pants all one color. Washable cotton flannel-ette—fabric that scoffs at chills and drafts. Melon (rose coral) or Powder Blue pants with Print on White jacket. Sizes to fit 32-34-36-38-40 inch bust. State size and color. 16 J 5929. (14 oz.).....3.98

8 COMBED COTTON knit... roguish sleep-seekers that find Bermuda shorts and tee shirt a most comfortable dorm-time combination. Slip-over crew neck shirt gayly striped front and back, with solid color trim. Elastic waist shorts reverse the scheme ... with solid color adroitly outlined in matching stripes. Wash separately. Black or Red, each with multi-stripes. Sizes: Small (fits 30 in. bust); Med. (32-34) or Large (36). State size, color. 16 J 5925. (1 lb.).....4.98

9 PAJAMAS AND SCUFFS... of Fruit-of-the-Loom pigment acetate crepe with special soft finish that looks like pongee! 2-piece pajamas ... mandarin style jacket in lively wheelbarrow print. Button front; handy pocket. Trousers full length; elastic back waist. Colors: Royal Blue print with solid Blue pants or Orange print with Black pants. Solid color scuffs. Sizes to fit 32-34-36-38-40 inch bust. (12 oz.) State size and color. 16 J 5933.....2.98 Save! (1 lb. 8 oz.)...2 for 5.95



2
Waltz
Nightie
5.98

3
Gown
3.98
Also Larger
Sizes

1
Nightshirt or
Baby Doll Shorty 3.98

4
Baby Doll
Briefs
4.98

Christmas Cuties

Lovely new gowns and adorable PJ's ...
saucy, sweet, and priced to please!

1 OLD FASHIONED spice-cotton flannelette gone glamorous with frills and lace! Sanforized, washable. Multi-print on White. Gown-sizes: to fit 34-36-38-40 inch bust. (14 oz.) State size. 16 J 5923.....3.98

SHORTY brief. Sizes to fit 32-34-36-38 in. bust. (1 lb. 4 oz.) State size. 16 J 5924.....2 pc. 3.98

3 SCULPTURED Chantilly type lace bodice—double nylon tulle at hem. Nylon tricot. Pink or Lt. Blue. Sizes to fit 32-34-36-38-40 inch bust. State size, color. 16 J 5931. (12 oz.)...3.98

LARGER sizes to fit 42-44-46-48 in. bust. State size and color as above. 16 J 5932. (12 oz.)...4.98

2 ROMANTIC WALTZ length nightie to make a very feminine miss look even more feminine. Delicate wisp of rayon satin ribbon laced through frothy eyelet, edges floral flocking on opaque bodice and flounce. A mist of loveliness in nylon tricot. With lined bust sections. Pink or Lt. Blue. Sizes to fit 32-34-36-38 inch bust. State size, color. 16 J 5930. (14 oz.).....5.98

4 ANGELIC—bow topped Baby Doll shorty ... a piquant profusion of pleats flute the simplest of shifts ... barely touches the edge of frilled briefs that peep from under hemline. All filmy nylon tricot.

Flame Red or Aqua. Sizes: Small (fits 32-34 in. bust); Med. (36) or Large (38-40). State size and color. 16 J 5928. (14 oz.).....4.98



5
2-piece
4.98



6
3-piece 5.98



7
2-Pc.
Loungers
3.98



8
Bermuda Pj's
4.98

**Pajamas
for Christmas**
Knits, tricots, flannelettes,
... so cute and colorful



9
Pj's, Scuffs
2.98

See Page 287 for Spiegel Budget Power... stop dreaming... start living





1
Quilted
satin
13.98



2
Quilted
cotton
12.98



5
Nylon--
13.98

Also larger sizes



3
Satin
slippers 4.98

4
Schiffli
embroidered
19.98

Glamour Robes

Cozily quilted in lovely designs
. . . the perfect gift to delight
the lucky princess in your life

Budget Power protects peace of mind with free Prudential Life Insurance



Gown and duster set **9.98**

Double-nylon duo-tone duet

DUO-TONE SET...duster and gown in sheer 15 denier nylon tricot. Each lined in softly contrasting color for effect of filmy iridescence! Trimmed in ruffly nylon and nylon ribbon. Elastic back waist on gown. Both 45 in. long. Hand washable. Colors: Moss Green over Petal Pink or Ebony (black) over Azure Blue (lt.). Sizes to fit 32-34-36-38 inch bust. Shpg. wt. 1 lb. 12 oz. State size and color. 16 J 5917.....9.98



Gown and duster set **19.98**

Lined nylon "snow-drop"

SNOWY DOTS of soft flocking on sheer nylon tricot . . . over finer nylon! Gown and duster set. Duster has $\frac{3}{4}$ sleeves with elastic, Peter Pan collar with white crystal pleating trim, nylon satin ribbon. Waltz length gown with elastic in cap sleeves, nylon lace trim. Elastic at back waist. Hand washable. Blue (lt.) or Pink, each with White. Sizes to fit: 32-34-36-38 inch bust. (1 lb. 12 oz.) State size and color. 16 J 5919.....19.98



A Robe for Christmas . . . a joy for seasons (1 TO 5 ON FACING PAGE)

1 **SOFT AS SILK**, our acetate and nylon crepe back satin quilted duster . . . self-lined for next-to-the skin smoothness. Peter Pan collar and front detail brushed with nylon lace. Glittery buttons dot tab opening, extra snap at neck. Cuffed $\frac{3}{4}$ sleeves, lace edged. Hand wash. Blue (shown) or Pink. Misses' sizes: 10-12-14-16-18. State size, color. 16 J 5872. (2 lbs. 8 oz.) **13.98**

2 **PRETTIEST DUSTER** with practical ways. Quilted cotton broadcloth with self lining. Stripe and posy pattern trimmed with rayon satin; flower that detaches. $\frac{3}{4}$ sleeves push up—elastic in cuffs; 2 slit pockets. Flared back and button front. Very washable. Pink (shown) or Blue Print. Misses' sizes: 10-12-14-16-18. (2 lbs. 10 oz.) State size, color. 16 J 5871.....**12.98**

4 **NEWEST** of the new . . . exquisitely crafted imported type Schiffler embroidery and quilting on a full length robe! We're proud to offer you this masterpiece of fine rayon taffeta, quilted and embroidered on Swiss type machines. Coachman styling brings out the beauty in a wealth of skirt . . . the wide over-lap of double breasted front...the diminished waist...the great-coat lapels. Rayon satin lining in contrasting color! Dry clean. White with Red (shown), Navy with Red or Gold with Black. Misses' sizes: 10-12-14-16-18-20. State size and color. 16 J 5873. (4 lbs.).....**19.98**

5 **A WHIRLING**, dramatic skirt sweeps to full length splendor on the wrap-around robe. It's of delicate sculptured nylon—beautifully washable—with dainty embossed design. Quilted and nylon crepe lined for warm luxury, yet looks light as a summer breeze. Wide, double lapels; self belt and inside tie. Pink (shown) or Blue. Misses' sizes: 10-12-14-16-18. State size and color. 16 J 5869. (3 lbs. 4 oz.) **13.98**

3 **POWDER PUFF** satin slippers. Foam padded sock lining cushions foot. Leather sole; rubber lift on $1\frac{1}{2}$ -in. heel. Net, ribbon puff. Women's sizes: 5, 5½, 6, 6½, 7, 7½, 8, 8½, 9. Med. width (B). 24 J 7967. PINK. 24 J 7968. Lt. BLUE. 24 J 7969. WHITE. State size. Shipping weight 1 lb.....**4.98**

LARGER SIZES to fit 38-40-42-44 inch bust. Colors as above. State size and color. Shipping weight 3 lbs. 8 oz. 16 J 5870.....**15.98**

See Page 287 for Spiegel Budget Power . . . a better way to better living



① Sanforized
Sizes 32-44 **1.98**



② Sanforized
percale **1.98**



③ Embossed
Everglazed **2.98**

④ lined
bodice **2.98**

⑤ "Show-off"
plisse **2.98**

With a Christmas Look . . . A Budget-minded Price

Carefree cottons take to Christmas giving like their wonderful low prices. Slips in sanforized percale, batiste, plisse . . . some embossed, everglazed.

① **THE LADY LOVES** lace . . . dainty cotton Val lace that pretties V-front, straight back, hem of Sanforized cotton percale slip. Eyelet embroidery, no-see-thru shadow panel . . . fashion extras at a low, low price. White. Sizes to fit 32-34-36-38-40-42-44 inch bust. (7 oz.) State bust size. 16 J 5062 . . . **1.98** Save! (14 oz.) 2 for 3.95

② **EYELET** trimmed sanforized cotton percale slip. Shadow panel! V-front bodice enhanced with lovely eyelet embroidery that repeats at straight back . . . takes encore at flouncy ruffled hem. 4-gore cut. Adj. straps. White. Sizes to fit 32-34-36-38-40 inch bust. (7 oz.) State bust size. 16 J 5061 . . . **1.98** Save! (14 oz.) 2 for 3.95

③ **TINY SIMULATED** pleats embossed all over everglazed cotton slip. V-front a delicacy of nylon and acetate chantilly type lace, ruffled nylon edging . . . interlaced with rayon satin ribbon. Lace trims straight back, 2 bottom tiers. Washable. White. Sizes to fit 32-34-36-38-40 in. bust. (7 oz.) State bust size. 16 J 5064 . . . **2.98** Save! (14 oz.) 2 for 5.95

④ **EMBOSSED COMBED** cotton batiste with shadow panel. She'll love the way it feels . . . like softest lingerie. Sizes 32 thru 44. Nylon lace flurries at embroidered nylon bodice, again at straight cut back. Top lined with cotton. White. Sizes to fit 32-34-36-38-40-42-44 in. bust. Shipping weight 7 oz. State bust size. 16 J 5063 . . . **2.98** Save! (14 oz.) 2 for 5.95

⑤ **COMBED COTTON** plisse "show-off" slip—sizes 32-44. Front, back bodice of embroidered nylon; repeats at scalloped hem. Sanforized, cotton lined top trimmed with embroidered nylon sheer. Shadow panel. White. Sizes to fit 32-34-36-38-40-42-44 in. bust. State bust size. 16 J 5065 (7 oz.) **2.98** Save! (14 oz.) 2 for 5.95

Petti-Pretties

GIVE HER YEAR
'ROUND JOY!
PRICED VERY LOW



①
2.98

②
2.98

④
2.98

③
5.98

① **NYLON HORSE HAIR** half slip to whirl her through the holidays . . . provides utmost flare under wide-skirted fashions. Three ever-widening tiers topped by sleek fitting nylon tricot . . . so right for today's long-torso silhouette. Wear over half slip for effect shown. All around elastic waist. White. Sizes: Small (fits 24-26 inch waist); Medium (27-28) or Large (29-30). State size. 16 J 5055. (8 oz.) . . . 2.98 Buy two! (1 lb.) . . . 2 for 5.95

② **PARCHMENT** nylon taffeta half slip . . . dainty, delightful way to say Merry Christmas. Nylon tricot torso top bursts forth into 3 full, floaty shirred tiers . . . to prop wide skirts in the grandest manner. Bound edges. 2 removable flowers. Color: White. Sizes: Small (fits 24-26 inch waist); Medium (27-28), or Large (29-30). Please state size. 16 J 5056. (8 oz.) . . . 2.98 Buy Two! (1 lb.) . . . 2 for 5.95

③ **EXQUISITE EMBROIDERY** adrift on nylon sheer half slip . . . lends enchantment to holiday giving. Scalloped edging trims three wide, whirling tiers . . . bottom sweep underscored by two nylon net ruffles. All around elastic waist. Brightened with flower and leaf trim. Colors: White, Pink or Lt. Blue. Sizes: Small (fits 24-26 in. waist); Medium (27-28); Large (29-30). State size, color. 16 J 5057. (1 lb. 2 oz.) . . . 5.98

④ **PLEATED RUFFLES**, bands of nylon and acetate chantilly lace adorn nylon tricot half slip. Elastic waist. Colors: Black or White. Sizes: Small (fits 24-25 inch waist); Medium (26-28); Large (29-30). State size, color. 16 J 5058. (1 lb.) . . . 2.98 Buy two! (2 lbs.) . . . 2 for 5.95
FOR TALLER WOMEN. 2½ in. longer. State size, colors as above. 16 J 5059. (1 lb.) . . . 2.98 Buy two! (2 lbs.) . . . 2 for 5.95

LINGERIE LOVES . . . PRETTILY PACKAGED . . . PRICED TO PLEASE. Items 5 thru 11 shown at right

⑤ **ACETATE TAFFETA** slip goes off on a wild color spree . . . gayest gift under the tree! Top bodice, straight cut back done to new perfection with exquisite all over self-embroidery that repeats on camisole shoulder straps, again at hemline. Softly shaped bust cups. Convenient side zipper closing. Non-ravel pinked seams for longer wear. Wash separately by hand. Lovely colors: White, Tan, Red, Navy or Black. Sizes to fit 32-34-36-38-40 inch bust. State bust size and color. 16 J 5066. Shipping weight 12 oz. . . . 3.98

⑥ **DAY-OF-THE-WEEK** briefs . . . gift packed in straw braid sewing basket. Embroidered motif. Non-run acetate tricot knit jersey. Ass't'd pastels; designs may vary. Sizes: Small (fits 30-32 inch hips); Medium (33-36) or Large (37-40). Sold only in sets of 7 of 1 size. Shpg. wt. 2 lbs. 16 J 5060. State 1 size . . . 7 for 3.98

LARGER SIZE: X-large (fits 41-43 in. hips), XX-large (44-46). (2 lbs. 3 oz.) 16 J 5081. State 1 size . . . 7 for 4.49

⑦ **FANCY NYLON** trimmed briefs . . . gaily packed in lovely plastic jewel case with pop-up tray; snap opening. Non-run acetate tricot knit rainbow pastels . . . so dainty beneath your holiday fashions. All around elastic waist and legs. Reinforced double crotch. Fashioned of easy-care nylon tricot. Assorted colors and trims may vary. Sizes: Small (fits 30-32 in. hips); Med. (33-36) or Large (37-40). Sold only in box of six of one size. (1 lb. 3 oz.) 16 J 5086. State size . . . 6 for 3.98

⑧ **GIFT-PACKED**, gift-welcome . . . to make her Christmas even merrier. Fancy circular knit rayon briefs all done up in gay window box. Hollywood styled with all around elastic waist, elastic legs. Reinforced double crotch. Assorted pastel colors. Sizes: Small (fits 30-32 in. hips); Medium (33-36) or Large (37-40). Sold only in box of six of one size. Please state size. Shpg. wt. 1 lb. 1 oz. 16 J 5083 . . . 6 for 1.94

⑨ **NYLON PANTY** wardrobe . . . prettily gift-packed in useful plastic knitting box. Four exquisitely trimmed, three tailored . . . to suit all tastes. All around elastic waist, elastic leg openings. Durable double crotch. Colors: Assorted White, Pink, Blue and Maize. Sizes: Small (fits 30-32 inch hips); Medium (33-36) or Large (37-40). Sold only in box of 7 of one size. (1 lb. 2 oz.) State one size. 16 J 5082 . . . 7 for 4.98

⑩ **HELANCA NYLON BRIEFS.** Sure to please all the ladies on your gift list . . . s-t-r-e-t-c-h to fit all sizes. Hug body comfortably without binding, retain stretch after countless washings. Silky-soft to the skin. Gaily packed in reusable acetate container with handle. Elastic top, legs; double reinforced crotch. 1 White, 1 Pink, 1 Lt. Blue to box. One size fits 30 to 42 inch hips. Shipping wt. 11 oz. 16 J 5085 . . . 3 for 2.98

⑪ **"ROCK 'N ROLL"** nylon tricot briefs in clear reusable acetate container. Prettied with embroidered dancing figures; edged with ruffles. All-around elastic waist, legs. Reinforced double crotch. Three to box: 1 White, 1 Pink, 1 Blue. Sizes: Small (fits 30-32 inch hips); Medium (33-36) or Large (37-40). Sold only in sets of 3. (12 oz.) State 1 size. 16 J 5084 . . . 3 for 2.98

The Slip Off

Many Colors!



Day of the Week

⑥ Set of 7 for 3.98



Fancy Nylon trimmed

⑦ Set of 6 for 3.98



New Low Price

⑧ Set of 6 for 1.94



Trimmed and Tailored

⑨ Set of 7 for 4.98



Helanca Nylon Stretchables

⑩ Set of 3 for 2.98

⑤ Acetate Taffeta 3.98




Rock 'n' Roll Briefs

⑪ Set of 3 for 2.98

See Page 287 for Spiegel Budget Power... stop dreaming... start living





Black, White
and Light Blue

FLEXY SQUAW MOCS bright with Red and metallic Gold Indian trim. Uppers and soles of silky, butter-soft glove leather. Elastic gore binding cuddles the foot for stay-on fit. Plump foam cushioned insole. In plastic case—handy for traveling!

Women's Sizes: 4, 5, 6, 7, 8, 9. For 1/2 size, order next larger full size.

24 J 7834. BLACK.

24 J 7835. WHITE.

24 J 7836. LT. BLUE.

State full size. (1 lb.)2.98



Black with Gold
Pink with Silver

WEDGED LEISURE SCUFF with stretchable simulated patent band, metallic trim. Rayon satin heel and platform covering; scooped wedge heel, composition sole.

Women's Sizes: 4, 5, 6, 7, 8, 9. Order shoe size; for 1/2 size, order next larger full size. (1 lb.).

24 J 7832. BLACK with GOLD.

24 J 7833. PINK with SILVER. State full size2.98

Fancy-Free New Slippers



Black Watch
Golden Beige

FIRESIDE MOCS in Black Watch (today's exciting Black, Blue and Green plaid) or Golden Beige. Cotton-lined corduroy laced with rayon cord; foam crepe rubber soles.

Women's Sizes: 4, 5, 6, 7, 8, 9. For 1/2 size, order next larger full size. (1 lb.).

24 J 7837. BLACK WATCH Plaid.

24 J 7838. GOLDEN BEIGE. State full size1.98



Blue
Red

BARK TANNED SHEARLING—Now in Colors! So cozy and comfy—warm shearling lining; soft cotton fleece sock lining. Cushion crepe soles.

Women's Sizes: 4, 5, 6, 7, 8, 9. For 1/2 size, order next larger full size. (1 lb. 4 oz.).

24 J 7841. MED. BLUE.

24 J 7842. RED. State full size2.98



Black
Pink

BRACELET BALLERINA—a whisper of softest rayon velvet; rayon band spangled with rhinestones. Faille lining, leather sole, heel. Wear in-or-outdoors.

Women's Sizes: 4, 4 1/2, 5, 5 1/2, 6, 6 1/2, 7, 7 1/2, 8, 8 1/2, 9. Medium width (B).

24 J 7810. BLACK.

24 J 7811. PINK.

State size. Shipping weight 1 lb. 4 oz.2.98



Blue
Red

FUR TRIMMED MOC has brightly beaded vamp, rabbit fur collar for beauty, warmth. Simulated leather, felt lining. Soft padded suedine sole.

Women's sizes: 4, 5, 6, 7, 8, 9. For 1/2 size, order next larger full size. (1 lb.).

24 J 7945. Med. BLUE.

24 J 7946. RED. State full size1.98



Also White with Red,
and Pink with Blue

POLKA-DOTTED CAPEKIN! Gay new slipper style in rabbit fur-trimmed "spotties"! Leather sole and heel. Women's Sizes: 4, 5, 6, 7, 8, 9. For 1/2 size, order next larger full size. (12 oz.)

24 J 7891. White/Red Dots. 24 J 7892. Yellow/Blue.
24 J 7894. Light Blue/Dark Blue Dots.
24 J 7893. Pink/Blue Dots. **State full size** 2.98

—In Love With Color!



FLAIR BAND LEATHER WEDGE. Gored, cushion insole. Compo sole, 2-in. heel. For indoors or out! Women's Sizes: 4, 5, 6, 7, 8, 9. For 1/2 size, order next larger full size. (1 lb.)

24 J 7803. Pink Smooth. 24 J 7804. Lt. Blue Smooth.
24 J 7806. Avocado Green Suede.
24 J 7805. Navy Suede. **State full size** 3.98



Pick a flower of fashion from our holiday bouquets. Lovely gift for others—or yourself!

"BLACK-EYED SUSANS" put flowers at your feet in colorful First-in-Fashion drama! All felt scuff has jumbo posy centered with a Black felt button. Leather sole, thick "teardrop" foam crepe heel. Plump foam cushion insole. Felt content marked. Women's Sizes: 4, 5, 6, 7, 8, 9. For 1/2 size, order next larger full size.

24 J 7825. PINK. 24 J 7826. FUCHSIA.
24 J 7827. ORANGE.
24 J 7828. TURQUOISE.
State full size (12 oz.) 2.98



Also in Navy,
Pink and Turquoise

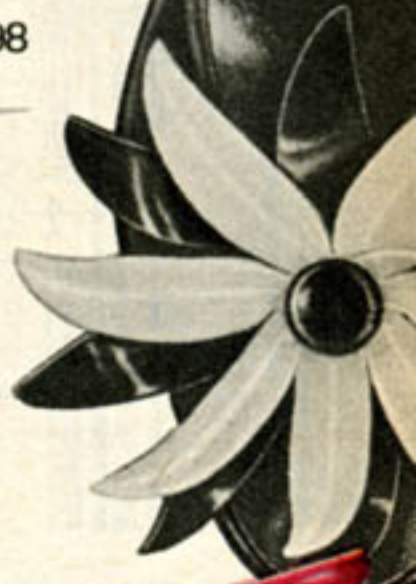
"LIGHTFOOT." Glove leather true moc handmade by Indian craftsmen. Leather sole, foam rubber insole. Women's Sizes: 4, 5, 6, 7, 8, 9. For 1/2 size, order next larger full size.

24 J 7807. White. 24 J 7808. Navy.
24 J 7809. Pink. 24 J 7812. Turquoise.
State full size. Shipping weight 1 lb. 1.98

HOLIDAY "POINSETTIA" for fashion at home or evenings out. Richest, softest kid leather uppers with giant kid leather blossom. Foot-flattering 2-inch miniature French heel. Rayon faille lining. Worth far more than this tiny price!

Women's Sizes: 5, 5 1/2, 6, 6 1/2, 7, 7 1/2, 8, 8 1/2, 9. Medium width (B).
24 J 7818. PINK with BLACK.
24 J 7819. BLACK with WHITE.
24 J 7820. RED with WHITE.
State size. (1 lb.) 4.98

Also in
Red with White

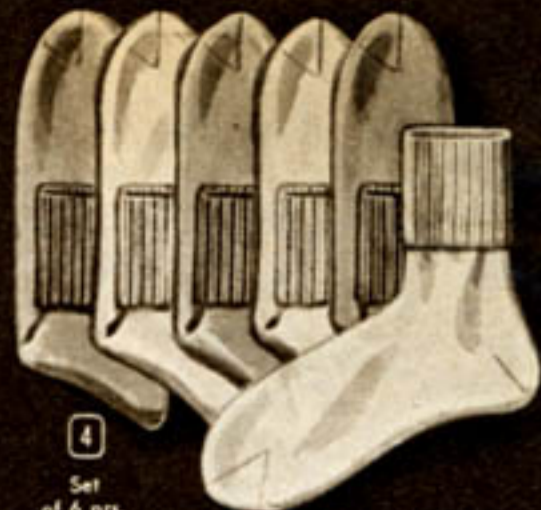




2
Set of 6
Children's Briefs



3
Set
of 5 prs.



4
Set
of 6 prs.

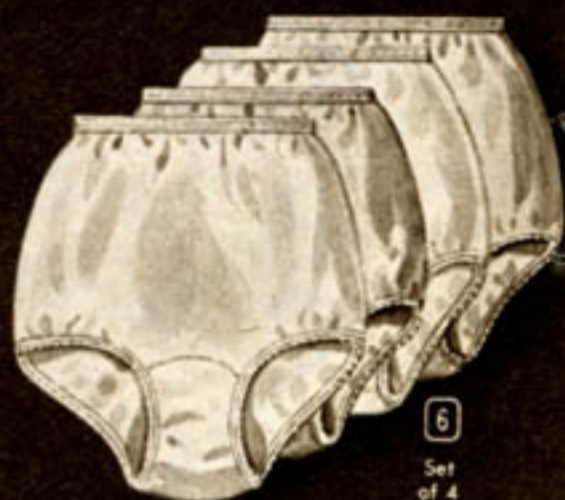


1
Also in
larger sizes



GIRLS'
SLIP

5



6
Set
of 4

See what **1.00** buys this Xmas

TREMENDOUS VALUES FOR THE ENTIRE FAMILY AT THIS LOW PRICE!

1 **SHADOW PANEL** cotton percale slip with built-up shoulders . . . economy priced to keep down holiday costs! Hemstitch trim provides neat finish around neckline, along built-up straps . . . reinforces, too. Front and back 4-gore style, with extra fabric panel at front from waistline to hemline . . . eliminates embarrassing see-through. Abt. 46 in. long. White. Sizes to fit 34-36-38-40-42-44 in. bust. 16 J 5352. State bust size. (7 oz.) . . . **1.00**
Save on 2. (14 oz.) . . . **2 for 1.99**

LARGER SIZES to fit 46-48-50-52 inch bust. Shipping weight 8 oz. 16 J 5353. State bust size . . . **1.39**
Save on 2. (1 lb.) . . . **2 for 2.77**

3 **MEN'S DRESS HOSE** with fancy designs on celanese and rayon for finest quality—looks much like silk; feels soft and comfortable on his foot. Slack length with elastic tops for neat and well-groomed look; stay up trimly, snugly. Durable cotton tops, toes and heels. Handsome footwear for every season all year around . . . will last for seasons, too! Colors: Assorted colors and patterns; sorry, no choice. Sizes: 10-10½-11-11½-12. Sold only in sets of 5 pairs, one size to each set. 21 J 107. State size (7 oz.) . . . **5 prs. 1.00**
Save more! (14 oz.) . . . **10 prs. 1.98**

5 **GIRLS' PLISSE SLIP** . . . cotton plisse crinkle crepe for easy-to-care-for comfort . . . requires little or no ironing. A wonderful purchase at this fantastically low price. Buy several and stock up—they'll last for seasons! Self material shoulder straps on some; built-up style on others. All tastefully trimmed with pretty Val type lace. Sorry, no choice of style. White only. Girls' sizes: 4-6-8-10-12-14. See size chart 6, page 289. 27 J 1678. State size. (4 oz.) . . . **1.00**
Save more! (7 oz.) . . . **2 for 1.98**

2 **CHILDREN'S BRIEFS** in spectacular bargain pack of six for only one dollar—our exceptionally low price! Quality cotton yarns of smooth, comfortable flat knit; trim and sturdy with carefully constructed flatlock seams for longer wear, to guard against uncomfortable chafing. Covered elastic all around waist. Durable double fabric crotch. Stock up the kiddies' under-wardrobe now, while the price is so low! White only. Sizes: 2-4-6-8. See size chart 6 on page 289, for how to measure for correct size. Sold only in sets of 6 briefs, 1 size to each set. Shipping weight 14 oz. 27 J 1529. State size . . . **6 for 1.00**
Save more! (1 lb. 11 oz.) . . . **12 for 1.98**

4 **ANKLETS** for girls and women . . . in thrifty bargain lots of six pairs for as little as a dollar! A lucky buy in a bright assortment of popular colors or all snowy white . . . all fine quality cotton knit, comfortable, healthfully absorbent. Some have rib knit cuff sewn on; some have elastic stay-up tops. Sorry no choice of style. Colors: Assorted colors or White. Sizes: 7-7½-8-8½-9-9½-10-10½. Sold only in sets of six pairs, one size to each set. State size, Assorted or White. 21 J 875. (8 oz.) . . . **6 prs. 1.00**
Save more! (15 oz.) . . . **12 prs. 1.98**

6 **LADIES' HOLLYWOOD BRIEFS** in ultra-low priced bargain pack of four! Circular knit rayon in popular Hollywood cut. Elastic leg openings; elastic all around waist. Reinforced at points of strain with sturdy bartacking, with double fabric crotch for longer wear. Full cut to fit with the utmost comfort. Colors: 2 Pink briefs and 2 White briefs to each pack of four. Sizes: Small (fits 30-32 inch hips); Medium (33-36) or Large (37-40). Sold only in sets of four, 1 size to each set. 16 J 5401. State size (12 oz.) . . . **4 for 1.00**



①
 Sizes 2-6
 Sizes 8-16
2.98 up

②
 Sizes 8-16 **5.49**

③
 Duster and
 Pajama Sets
 Sizes 8-16 **5.98**

④
 Sizes 4-8
 Sizes 10-16
2.49 up



⑤
 Sizes 8-14 **6.98**



⑥ "Dolly 'n' Me Set
 with matching nighties **3.98**

⑦
 Sizes 3-6X **3.98**



⑧
 Sizes 3-6X
 Sizes 8-14 **3.98** up

See Page 287 for Spiegel Budget Power Plan . . . a wonderful way to buy

7-14
9.75



3-6X
8.75



2
7-14
Reversible
Jacket
14.98



4
Hat
1.98



3
7-14
Slacks
3.98



New, Warm
Gift Values!

5 Girls' 3-6X Set 10.98

6 Girls' 1-4 Set 9.98

7 8 Washable 2-6X Girls', Boys' Snowsuits 9.98

1 WASHABLE NYLON-BLEND FINGERTIP HOODED JACKET for big 'n' little sister's Christmas. First in fashion with smart knit collar, flap pockets, set-in sleeves. Convenient, style-new "Dog-leash" clips close jacket front. It's 60% combed cotton poplin, 40% nylon and practical plus 'cause it washes... dries fast, resists wrinkles. Weightless-but-warm acetate quilted to intercol lining. Colors: Red with Navy or Turquoise with White. State size and color. LITTLE SISTER SIZES: 3-4-5-6-6X. See chart 2, pg. 289. 31 J 6063M. Shipping weight 1 lb. 12 oz. 8.75
BIG SISTER SIZES: 7-8-10-12-14. See chart 3, pg. 289. 31 J 6305M. (2 lb. 4 oz.). Price cut over \$1.00 from big catalog. 9.75

2 WOOL PLAID JACKET reverses to fast-color pinwale corduroy that's water-repellent! Double breasted. Slash pockets. Navy-n-Red Plaid with Red. Sizes: 7-8-10-12-14. See chart 3, pg. 289. 31 J 6307M. State size. Shipping weight 3 lbs. 14.98

3 REED-SLIM SLACKS with zipper ankles. Pinwale corduroy 'n' color-mated to jacket. Belt, side zip, pockets. Wash separately. Red. Sizes: 7-8-10-12-14. See chart 3, pg. 289. 29 J 8348. State size. Shipping weight 1 lb. 3.98

4 COTTON VELVETEEN HAT with brass star-flowers. Navy. 31 J 6963. (Fits 3 to 6X'ers). Shipping weight 8 oz. 1.98

5 2-PC. SET with "Rose-bud Jewels." 12-gore double-breasted ballerina coat has dyed Mouton processed lamb collar. Rayon, acetate twill lined; re-processed wool interlined. Napped-cotton lined slacks. 75% acetate, 25% wool on cotton back (60% of suede-type fabric). Copen Blue or Deep Pink. Sizes: 3-4-5-6-6X. Chart 2, pg. 289. State size, color. 31 J 5931. (4 lbs.) 10.98

6 4-PC. COAT SET. Dyed Mouton processed lamb trimmed double-breasted cape-coat; adjustable suspender slacks; pixie brim hat. Plus muff with plastic shoulder strap. All napped cotton lined. 75% acetate, 25% wool face on cotton back (60% of suede-type fabric). Copen Blue or Deep Pink. Sizes: 1-2-3-4. See chart 1, pg. 289. State size, color. 31 J 5652. (3 lbs.) 9.98

7 GIRLS' WASHABLE SNOW set—3 sturdy pieces of 100% Nylon, regularly \$12.98. Acetate-quilted-to-acetate lining. Zipper Jacket with novel knit insert; knit wristlets. Suspender ski pants with reinforced knees, knit anklets. Piped turn-back brim hat. Charcoal Gray (dk) with Pink. Sizes: 2-3-4-5-6-6X. See chart 2, pg. 289. Shipping weight 3 lb. 31 J 6060. State size. 9.98

8 NYLON SNOWSUIT for boys—regularly \$12.98. Quilt-stitched zipper jacket has elastic waist, knit wristlets. Suspender pants have reinforced knees, knit anklets. Plus elastic-back brim helmet. Acetate quilted-to-acetate lined. Colors: Navy or Brown (dk) with White. Sizes: 2-3-4-5-6-6X. See size chart 2, page 289. State size and color. 31 J 6061. (3 lbs.) 9.98

Sister Sets They'll Just Adore!



3
7-14 Set
6.88
4
4-6X Set
5.88

Lasting Gifts
... Warm Gifts
Wonder Priced!

1 Coat Set Sizes 4-6X 14.88 2 7-14 Coat 14.88

5 7-14 Coat 16.98 6 3-6X Set 16.98

1 2 FASHION-NEW "TORSO" WAIST in adorable sister coats at only \$14.88. Colorful, high-fashion with an enviable reputation for warmth and wear. A rich, luxury-soft zibeline created from warm, blend of 60% reused wool, 20% mohair, 20% reprocessed wool and with a rustling iridescent taffeta lining and a cozy 100% reprocessed wool interlining. Double-breasted front with novel rhinestone buttons; rounded cowl collar with 2-button closing; deep slash pockets. Set-in sleeves. Well tailored, up-to-the-minute styling with 4-gore sides dipping in back to button-trimmed, pointed torso seams and ending in 6 graceful gores. Colors: Postman Blue (med.) or Rosewood (med. Rose).

LITTLE SISTER SIZES (1): 4-5-6-6X. Plus adjustable, napped cotton lined suspender slacks. See chart 2, pg. 289. Shipping weight 3 lbs. 12 oz.
31 J 5930M. State size, color. 2 pcs. 14.88

BIG SISTER SIZES (2): 7-8-10-12-14. See chart 3, pg. 289. State size, color.
31 J 6271M. (4 lb. 6 oz.). Coat only 14.88

3 4 2-PC. BALLERINA CIRCLE-SKIRTED raincoat set that look alike and make especially nice Christmas gifts for sisters! With this gorgeous, color-new raincoat set —of chromspun acetate taffeta check on waterproof rubberized back—both big and little sister will welcome every rainy day! Sturdy, yet beautifully tailored with pointed collar topping single-breasted, button front. The sweeping-full, wrap-around circle skirt has a neat, belted elastic waist. Fits comfortably over heavy sweaters, skirts. And to protect their heads from those cold wintry winds and keep those curls in place there's a matching elastic-back cap with brim. Water repellent. Sunny-new color: Charcoal Gray (dk.) with Pink Checks.

LITTLE SISTER SIZES (4): 4-5-6-6X. See size chart 2, page 289. State size. Shipping weight 1 lb. 8 oz.
31 J 6809M. Coat and Cap 5.88

BIG SISTER SIZES (3): 7-8-10-12-14. See size chart 3, page 289. State size. Shipping weight 1 lb. 12 oz.
31 J 6810M. Coat and Cap 6.88

5 6 VIRGIN WOOL COAT SETS. Ideal Christmas gifts for those very special little girls on your list! There's a coat for big sister and a coat and slacks for little sister . . . all good values at this low price! A richly textured fabric to keep them toasty warm and styled to keep them pretty as a picture, too! 12 whirling gores flow from the double-breasted coat's new empire waist. Soft, dyed Mouton processed lamb collar; sleeve trim. 10 buttons close front. Fully lined in iridescent rayon, acetate; 100% reprocessed wool interlined. Grey with Pink and Blue Multicolor Checks.

LITTLE SISTER SIZES (6): 3-4-5-6-6X. Comes complete with super-warm reprocessed wool suspender slacks cozily lined in napped cotton. Elastic wind-breaking ankle inserts. Convenient side snaps. See size chart 2, page 289. Shipping weight 4 lbs.
31 J 5908M. State size 16.98

BIG SISTER SIZES (5): 7-8-10-12-14. See size chart 3, page 289. State size. Shipping weight 4 lbs. 6 oz.
31 J 6272M. Coat only 16.98

See Page 287 for Spiegel Budget Power . . . stop dreaming . . . start living

For Boys 3-7

NEW STYLES—COLORS

Gifts They'll Use

JUST LIKE DAD'S!



1 3-6 Hi-Bulk Orlon Sweater 2.98



2 3-7 Zip Jacket 3.98 Slacks, Belt 2.95

3 3-7 Pants, Vest, Jacket Set 9.98



4 3-7 Dacron Shirt, Tie, Links Set 1.98



5 Davy Crockett Dress Pants, 3-7 2.95



6 Davy Crockett 3-7 Flannel Shirt, Tie 1.98



7 Combed Cotton Knit Polo, 3-6 1.79



8 3-6 Corduroy Pants, Belt 2.95

1 ORLON SLIPOVER sweater, luxuriously soft—yet strong because it's the better hi-bulk orlon in a very fine gauge knit. Washes, dries fast in shape—without blocking! Won't mat! Outwears wool! Double rib knit neck; rib cuffs, waist. Matze, tan, blue or pink. Sizes: 3-4-5-6-7. See chart 7, page 289. State size, color. 32 J 8240. (7 oz.).....2.98

2 HIT-COLOR SEPARATES! New! Mint Green with Black in rayon, nylon sheen gabardine. Sizes: 3-4-5-6-7. See chart 7, pg. 289.

MINT ZIPPER JACKET. Smart! Rayon, acetate lined. Dry clean. 32 J 8288. State size. (12 oz.) 3.98

BLACK SLACKS. Separate Mint belt; 2 pockets, zipper, elastic back. Wash separately. 32 J 8289. State size. (12 oz.)...2.95

3 BLACK WATCH SET. Hit clan plaid jacket in durable pinwale corduroy with Gold acetate lining, 2 pockets. Red rayon gab vest with Gold acetate lining, back. Smart Gray nylon, acetate gabardine slacks: half belt; zipper, 2 pockets, cuffs. Dry clean. Plaid with Red and Gray. Sizes: 3-4-5-6-7. See chart 7, pg. 289. (2 lb). 32 J 8286. State size.....9.98

4 DRESS SET, DACRON and cotton blend shirt has soft, firm feel yet dries in a flash with no ironing needed! Interlined dress collar, french cuffs. Pearl-like buttons. Plus "antique gold" cuff links, clip-on rayon bow tie. Washable colors: Mint, White or Pink. Sizes: 3-4-5-6-7. See size chart 7, pg. 289. State size and color. 32 J 8287. (7 oz.).....1.98

5 DAVY CROCKETT Pants. Fine sanforized cotton gabardine with elastic back waist, pleats in front. Separate belt. Felt fringe trim. Zip fly, 2 pockets. Wash separately. Brown or Black. Sizes: 3-4-5-6-7. Chart 7, p. 289. State size, color. 32 J 8283. (12 oz.).....2.95

6 "DAVY" SHIRT SET. Exciting Davy Crockett print on warm sanforized cotton flannel and harmonizing bolo tie with slide! Interlined 2-way collar, double yoke back, pocket, cuffs, in-or-out bottom. Washable. Tan or Gray. Sizes: 3-4-5-6-7. See size chart 7, p. 289. Shpg. wt. 6 oz. 32 J 8282. State size, color...1.98

7 BLAZER STRIPE POLO. very smart with spread collar, placket and long sleeve cuffs in solid color. All fine combed cotton knit. In-or-out bottom. Wash separately. Red or Green. Sizes: 3-4-5-6. Chart 7, p. 289. State size, color. 32 J 8284. (5 oz.)...Es. 1.79 SAVE! (10 oz.).....2 for 3.50

8 CORDUROY DRESS SLACK. Finest "grown-up" tailoring...pleated front, welt pockets, zip fly, plus separate matching belt! Elastic back waist, belt loops. Washable. Colors: Charcoal Gray or Brown. Sizes: 3-4-5-6. See chart 7 pg. 289. State size, color. 32 J 8274. (1 lb.).....2.95

Newly Styled, Warm, Priced for Giving!

FAVORITE FABRICS

FINEST TAILORING



Warm quilt linings... print in the poplin, solid for the wool



① 11.98



② 14.98



Both have drawstring hood he can snap on or off as he likes



③ Clipper Coat in Warm Wool 12.98



GIFT SPECIAL!
④ Horsehide, Reduced! \$16.98 in Catalog 14.88



⑤ Zip-lined Suburban Coat, Wool Blend 16.95

"OLYMPIAN" PEG COAT WITH DETACHABLE HOOD . . . THE U.S. OLYMPIC TEAM STYLE!

① PRINT LINED POPLIN OLYMPIAN—the style chosen for the 1956 Olympic team! So you know it's got to be warm, sturdy—and is it smart! Closes with new wood pegs and rope loops, and under that a wind-tight zipper closing. The drawstring hood detaches, shows the dashing lining. Lining print is rich rayon quilted to 70% reprocessed wool, 30% man-made fiber. Inner knit wrists, sleeve tabs, chin strap, slash pockets. Colors: Red with Black print or Navy with Navy print. Sizes: 8-10-12-14-16-18. See chart 7, pg. 289. 33 J 8573. State size, color. Shpg. wt. 3 lbs. 12 oz. 11.98

② WARM WOOL MELTON OLYMPIAN—made just like the official jacket for the U. S. Winter Olympic team! This hardy reprocessed wool has the handsome rope-and-peg closing over a wind-tight zipper fly front, detachable drawstring hood with chin strap. Sleeve tabs, snug inner knit wristlets. Front yoke, slash pockets. Warmly lined in 70% reprocessed wool and 30% man-made fiber. Quilted to solid color rayon. Colors: Charcoal Gray (dk.) or Charcoal Brown (dk.). Sizes: 8-10-12-14-16-18. See size chart 7, pg. 289. 33 J 8574. State size and color. Shpg. wt. 4 lbs. 10 oz. 14.98

WOOL MELTON CLIPPER COAT

③ First-in-fashion new length is just enough longer for both dress and sport! New heavy knit collar to wear up or down, knit wrists, pocket trim, back tabs. Heavy reprocessed wool lined in 70% reprocessed wool, 30% man-made fiber quilted to rayon. Zip front. Lt. Gray, Dk. Blue trim or Red, Lt. Gray trim. Sizes: 8-10-12-14-16-18. See chart 7, p. 289. (4 lbs. 4 oz.) 33 J 8599. State size, color. 12.98

HORSEHIDE BOMBER JACKET

④ Our best horsehide jacket reduced for Christmas giving! \$16.98 in big catalog. Resists wind, weather—stays soft and pliable. Thick, warm collar of soft dyed mouton processed lamb. Full lining of 100% reprocessed wool quilted to rayon makes it super snug. Heavy knit waist, cuffs, 2 slash, 1 zip pocket. Brown. Sizes: 8-10-12-14-16-18. See chart 7, p. 289. 33 J 8516. State size. (3 lbs. 12 oz.) 14.88

NEW SUBURBAN, ZIP-IN LINED!

⑤ Handsome in new color-nubbed fabric, now with zip liner for all-year wear! Warm 85% reprocessed wool, 15% nylon with rayon lining. Zip lining: 70% reprocessed wool, 30% man-made fiber quilted to rayon. Notched collar, 2 flap pockets, mock cash flap, vent back. Skipper Blue (lt. Navy) or Charcoal Brown (dk.). Sizes: 8-10-12-14-16-18. See chart 7, p. 289. 33 J 8587. State size, color. (5 lb.) 16.95

See Page 287 for Spiegel Budget Power Plan . . . a wonderful way to buy

He Can Always Use A Shirt—Give the Finest



5 Black Watch Shirt, 6-18 **2.89**



DRESS SHIRT SET WITH COLOR NEWS

1 Matched Shirt and Hanky Plus Tie, Cuff Links, 8-18 **2.98**



6 Color-New Polo, 6-18 **1.98**



7 Sanforized Flannel, 6-18 **1.79**



8 New 6-18 "Texan" Plus Bola Tie **2.98**



2 **2.49**
8-18

3 **1.79**
8-18

4 2-Pc. Shirt, Belt Set, 8-18 **2.98**

THE CONTINENTAL LOOK—Inspired gifts, import inspired!

Budget Power fulfills your heart's desire... without worry over money

In Style, Color, Quality!

The very newest for boys, size 6-18
Styles 1 to 8 shown in color at left

1 DRESS SHIRT, TIE AND HANKY SET he's sure to like 'cause it's the very newest in color and style! The smartly rounded dress collar keeps its neat look with removable plastic stays. French cuffs show off the "antique" metal cuff links. Long split tails, double yoke back, pocket. Color-matched embroidered handkerchief and a harmonizing rayon tie. Shirt is fine, high count broadcloth, 136x60 threads per inch . . . sanforized and washfast. Colors: Mint, Maize, White or Pink. Sizes: 8-10-12-14-16-18. See chart 7, pg. 289.
32 J 7566. State size, color. (1 lb.) 2.98

2 "CONTINENTAL" FLANNEL with the new spread "Freedom" collar! It's made with interlining and stays to keep it looking smart, and when it's buttoned it's like a conventional collar! "Continental" front with a heraldic print chest stripe. Pleated sleeves and satin lined yoke. Soft napped, washable cotton. Colors: Blue or Green combinations as shown. Sizes: 8-10-12-14-16-18. See size chart 7, page 289. Shipping weight 1 lb.
32 J 7569. State size and color. 2.49

3 NEW KNIT "CONTINENTAL"—that favorite import-flavored collar style, here in finest interlock knit combed cotton. Popular pastels brightened with a dashing bullfight screen print. The handsome collar and long sleeve cuffs are double rib knit. Hemmed bottom he can wear in or out. Wash separately. Colors: Mint Green with Black or Maize with Brown. Sizes: 8-10-12-14-16-18. See size chart 7, page 289.
32 J 7568. State size, color. (7 oz.) 1.79
BUY 2 AND SAVE! (14 oz.) 2 for 3.50

4 "CONTINENTAL SET"—SMARTEST EVER with a check belt to match the shirt's back yoke and new collar! Beautiful combed cotton chambray is vat-dyed and perma-press finished to stay fresh and bright! Washable; less than 1% shrinkage. New front opening curves to interlined convertible collar lined with stays. Long pleated sleeves. 2 button-through pockets. "Dura-Bac" belt. Colors: Red, Brown or Blue. Sizes: 8-10-12-14-16-18. See size chart 7, page 289. Shipping weight 1 lb.
32 J 7567. State size and color 2.98

5 BLACK WATCH SHIRT—the rich clan plaid that's big style news, everywhere! Handsome print on smooth sanforized cotton . . . carefully tailored with new round, button-down collar. 2-button-through pockets, pleated sleeves, simulated pearl buttons. Washable. Plaid as shown. Sizes: 6-8-10-12-14-16-18. See chart 7, pg. 289.
32 J 7565. State size. (11 oz.) 2.89

6 DESIGNER-STYLED 2-TONE POLO SHIRTS. Fine combed cotton knit goes hi-fashion with rainbow colors in the bib insert, and smart Black accents! Interlined 2-tone collar, long sleeves, in-or-out bottom. Wash separately. Colors: Gold or Turquoise; each with Black. Sizes: 6-8-10-12-14-16-18. See size chart 7, page 289.
32 J 7570. State size, color. (7 oz.) 1.98

7 FLANNEL IN NEW BOX PLAID—fresh new look for his favorite warm shirt in this finest, soft-napped cotton. Convertible innerlined collar is the new rounded style. Double yoke back, 2 pockets, long sleeves. Hemmed in-or-out bottom. Washable, sanforized. Colors: Pink or Mint Green combinations. Sizes: 6-8-10-12-14-16-18. See size chart 7, page 289. State size, color.
32 J 7571. Shipping weight 1 lb. 1.79
SAVE ON TWO! (2 lbs.) 2 for 3.50

8 "TEXAN"—NEWLY PINSTRIPED cotton broadcloth shirt finished off with a bola tie! Western double yokes in front and back, piped inset pockets with arrow trim, pointed cuffs, in-or-out bottom. Ivory-look ring shank buttons. Washable, sanforized. Blue or Maize with Black stripes, trim. Sizes: 6-8-10-12-14-16-18. See chart 7, pg. 289.
32 J 7572. State size, color. (1 lb.) 2.98



9 Preshrunk Flannel, 6-18 2.98

11 6-18 2.75

NO-IRON GIFTS THAT

Dip 'n Dry

9 FLANNEL YOU DON'T IRON! Fine preshrunk cotton in new shadow plaid. 2-way collar, cuffs interlined. 2 pockets, mock pearl buttons. Black bola tie. Washable. Colors: Mint Green or Blue with Gray. Sizes: 6-8-10-12-14-16-18. Chart 7, pg. 289. (1 lb.)
32 J 7563. State size, color. 2.98

10 PRINTED BATISTE, Dacron with 50% pima cotton dries fast, with little or no ironing! Interlined collar, cuffs. Mock pearl buttons. Pink or Lt. Blue. Sizes: 6-8-10-12-14-16-18. Chart 7, pg. 289. (11 oz.)
32 J 7564. State size, color. 2.98

11 DIP 'N DRY ORLON. Washable, dries fast ready to wear without ironing! Finest knit—interlined collar, cuffs. Pastels: Pink or Maize. Sizes: 6-8-10-12-14-16-18. Chart 7, pg. 289. (7 oz.)
32 J 7552. State size, color. 2.75

12 DACRON DRESS SHIRT. Little or no ironing! Removable plastic stays, spread collar. Tails. Resists wrinkles, washable. Pink, White or Mint Green. Sizes: 6-8-10-12-14-16-18. Chart 7, pg. 289. (8 oz.)
32 J 7562. State size, color. 2.89

13 DACRON BLEND Wash-N-Wear 65% Dacron, 35% Viscose slacks wash easily by machine or hand, dry overnight sharply creased for wear without ironing! California waist, 4 pleats, 4 pockets, back outlet. Zip fly. Charcoal Gray, Skipper Blue (lt. Navy) or Med. Brown. Waist Sizes: 24-25-26-27-28-29-30-31-32 in.—for inseams available see chart 8, pg. 289. State color, waist, inseam; state which is inseam.
33 J 8721. (1 lb. 12 oz.) 8.98



12 2.89 6-18

13 Famous Wash-N-Wear Slacks 8.98

See Page 287 for Spiegel Budget Power Plan . . . increase your buying power



①
Challis
Shirt—Tie
2.98



②
All Wool
Flannel
6.94



③ Shirt
2.98

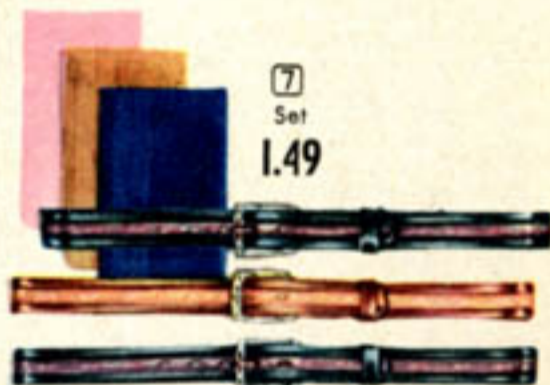
④ Slacks
4.98



⑤
Interlock
Orlon
4.98



⑥
Set
1.98



⑦
Set
1.49

New for Christmas

... a Wardrobe of Color!

① "TALISMAN" . . . tailored of 100% rayon challis, has crest emblazoned on the front. Black bola tie and slide included. Loop closing convertible interlined collar, pleated sleeves, chest pocket. Washable. Maize, Pink or Mint Green. Sizes: 8-10-12-14-16-18. See chart 7, pg. 289. State size, color. 32 J 7574. Shipping wt. 1 lb. . . . 2.98

② ALL WOOL FLANNEL Slacks at a reduced price . . . actually sold for \$7.98 a pair in big catalog. Slacks stay neat—shed wrinkles as only fine 100% virgin wool can. Pleated front, continuous waist with drop belt loops. 4 pockets (left rear one has button tab), zip fly. Serged, pressed open seams, ample back seam outlet. Dry clean. Charcoal Gray, Med. Gray or Dk. Brown. Waist sizes: 24-25-26-27-28-29-30-31-32—for inseam available, see size chart 8 on page 289. State color, waist and inseam. State which is inseam measurement. 33 J 8723. (1 lb. 9 oz.) . . . 6.94

COLORFUL CONTINENTAL SEPARATES—here they are, those extra special Christmas gifts you want for him! Shirts and slacks in fabulous new colors—bright shades of the shirt match color flecks in trousers—and the pants belt matches the shirt, too! Fine fabrics . . . both the shirt and slacks are washable rayon and acetate that's long wearing. Loaded with style, and they're low priced so you'll want a set in each color.

③ "RIVIERA" SHIRT of rayon and acetate has 2-way continental collar (lined with stays), double yoke back and pleated sleeves. Pearl-like buttons, 1 pocket. Colors: Orange, Pink or Mint Green. Sizes: 8-10-12-14-16-18. See size chart 7, page 289. 32 J 7573. State size and color. (1 lb.) . . . 2.98

④ WASHABLE FLANNEL SLACKS—rayon and acetate. 5 pockets, zip fly. Charcoal with Orange, Pink or Mint Green. Waist size: 24-25-26-27-28-29-30-31-32—for inseam available, see chart 8, pg. 289. State color, waist and inseam. State which is inseam. 33 J 8733. Shipping weight 1 lb. 7 oz. . . . 4.98

⑤ INTERLOCK ORLON SWEATER—the finest slipover we've ever sold, interlock knit turbo-bulk orlon! It washes and dries rapidly—keeps its shape without bothersome blocking. The V neck, cuffs and waist are ribbed to assure a smooth fit. Colors: Cherry Red, Sun Maize or Mint. Sizes: 8-10-12-14-16-18. See chart 7, pg. 289. (12 oz.) 32 J 7012. State size, color. . . . 4.98

⑥ "ALLIGATOR" Belt 'n' Wallet. Masculine top grain steerhide . . . looks just like alligator! 1-in. belt has handsome gold color buckle, beveled edges. Matching wallet! Brown. Waist sizes: 22-24-26-28-30-32. (1 lb.) 32 J 7821. State size. . . . Set 1.98

⑦ LEATHER BELT Plus Hankie. Good looking set has 1-in. belt, mercerized cotton 16x16-in. hankie. (1) Charcoal 'n' Pink, (2) Blue 'n' Navy, (3) Brown 'n' Beige. Waist sizes: 22-24-26-28-30-32. State size, color number. 32 J 7815. (10 oz.) . . . Set 1.49 Save on 2! (1 lb. 4 oz.) . . . 2 for 2.90

You can give him the things YOU
longed for as a boy... thanks to

Spiegel Budget Power



Happiness can't wait... the children
grow up so fast... and there's no
reason for waiting when you use the wonderful new
Spiegel Budget Power* Plan. Make this the richest
Christmas ever for your family...

Use your credit with peace of mind... without
disturbing your savings... protected by *free* Prudential
Life Insurance. See page 287.



This
Christmas
they'll be
the richest
couple in town
... thanks to
your Spiegel
Budget Power
Plan

Now you can afford to give them everything they've dreamed about... without upsetting the family budget and without disturbing your savings. Thanks to the wonderful new Spiegel Budget Power* Plan this can be their happiest... richest Christmas.



Use your credit with peace of mind... protected by free Prudential Life Insurance... see Page 287



*Trademark of Spiegel, Inc.

SPIEGEL • 247