



Stretch knit panels . . . give a fit that feels custom-made

Imported Cabretta (Brazilian) capeskin with Helanca® nylon stretch knit side panels. Full outseam whip-stitched with nylon thread. *State S, M or L.*

Unlined. Shipping weight 3 oz. . . . \$4.86

- 33 N 5407F—Brown
- 33 N 5408F—Dark gray
- 33 N 5409F—Black

Knit lined . . . 100% Orlon® acrylic.

- 33 N 5558F—Brown
 - 33 N 5559F—Dark gray
 - 33 N 5560F—Black
- Shipping weight 4 ounces \$5.77

Natural rabbit fur lined. Wt. 5 oz. \$6.77

- 33 N 5658F—Brown
- 33 N 5659F—Dark gray
- 33 N 5660F—Black

How to measure. Sizes small (8-8½), medium (9-9½), large (10-10½). *State S, M or L.* Measure right hand around knuckles, hand flat; not including thumb. If between sizes, order the larger size.



Imported Leathers

Capeskin Gloves . . . for softness and durability

Slim Continental styling

Extra-smooth grain African capeskin with single row decorative stitching on back for lean, tapered look. Gloves sewn with strong nylon thread. *State S, M or L.*

Unlined, Shpg. wt. 3 oz. \$4.86

- 33 N 5447F—Black
- 33 N 5448F—Brown

Knit lined, Orlon® acrylic. Wt. 4 oz. . . . \$5.77

- 33 N 5547F—Black
- 33 N 5548F—Brown

Natural rabbit-fur lined. Wt. 4 oz. . . . \$6.77

- 33 N 5647F—Black
- 33 N 5648F—Brown

Pile-lined for extra warmth

Smooth grain Cabretta (Brazilian) capeskin lined with 100% Orlon® acrylic pile (cotton backed). Two-row decorative stitching. Shirred elastic wrists keep warmth in, cold out. Sewn with nylon thread.

State S, M or L.

- 33 N 5770F—Black
- 33 N 5771F—Brown

Shipping weight 5 ounces \$6.77



Smooth grain Sudan capeskin in a side panelled glove style. Whip sewn with strong nylon thread. *State S, M or L.*

Knit-lined, Orlon® acrylic.
33 N 5575F—Black
33 N 5576F—Brown
Shipping weight 4 oz. \$4.77

Natural rabbit-fur lined.
33 N 5675F—Black
33 N 5676F—Brown
Shipping weight 5 oz. \$5.77

Smooth-grain Sudan capeskin is soft and durable. Side opening at cuff. Full outseam sewn with nylon thread for longer wear. *State S, M or L.*

Knit-lined, Orlon® acrylic.
33 N 5504F—Black
33 N 5505F—Brown
Shipping weight 4 oz. \$3.86

Natural rabbit-fur lined.
33 N 5604F—Black
33 N 5605F—Brown
Shipping weight 5 oz. \$4.86

Smooth-grain domestic capeskin, soft and pliable. Side opening at cuff. Whip sewn with nylon thread for added strength. *State S, M or L.*

Knit-lined, 100% wool.
33 N 5584F—Black
33 N 5585F—Brown
Shipping weight 4 oz. \$3.44

Natural rabbit-fur lined.
33 N 5684F—Black
33 N 5685F—Brown
Shipping weight 5 oz. \$4.44

Pigskin-grained domestic capeskin. Full outseam is sewn with strong nylon thread. *Please state S, M or L.*

Unlined.
33 N 5444F—Black 33 N 5445F—Brown
Shipping weight 3 ounces \$1.94

Knit-lined, 50% cotton and 50% rayon.
33 N 5544F—Black 33 N 5545F—Brown
Shipping weight 4 ounces \$2.86

Natural rabbit-fur lined.
33 N 5644F—Black 33 N 5645F—Brown
Shipping weight 5 ounces \$3.86



.. crafted in America

Meticulous workmanship plus styling with a flair

Pigskin Leather

Natural grain pigskin. Raglan style thumb. Whip sewn with nylon thread.
State S, M or L.

Unlined.
33 N 5443F—Shpg. wt. 3 oz. . . \$4.44

Knit-lined, Orlon® acrylic.
33 N 5543F—Shpg. wt. 4 oz. . . \$5.44

Note: All gloves on these two pages are made in U.S.A.

Pile-lined Suede

Suede leather, imported from Africa. Smart-fitting flare cuffs and elastic shirred wrists. Whip-stitched with nylon thread for longer wear. Orlon® acrylic pile lining, cotton backed.
State S, M or L.

33 N 5757F—Brown
33 N 5758F—Camel tan
33 N 5759F—Black
Shipping weight 5 ounces . . . \$6.77

How to Measure Sizes small (8-8½), medium (9-9½), large (10-10½). State S, M or L. Measure right hand around knuckles, hand flat, not including thumb. If between sizes, order the larger size.

Deerskin . . rich, soft, warm

Smooth natural grain. Continental styling with side opening at cuff, handsome stitching on back. Sewn with strong nylon thread.
State S, M or L.

Unlined. Shipping weight 4 oz. . . \$6.77
33 N 5420F—Black
33 N 5421F—Acorn
33 N 5422F—Gray

Knit-lined, Orlon® acrylic.
33 N 5520F—Black
33 N 5521F—Acorn
33 N 5522F—Gray
Shipping weight 5 ounces . . . \$7.77

Natural rabbit-fur lined.
33 N 5620F—Black
33 N 5621F—Acorn
33 N 5622F—Gray
Shipping weight 6 ounces . . . \$8.77

Knit Gloves . . blends designed to provide warmth plus extra flexibility

Stretch glove of 80% Creslan® acrylic and 20% stretch nylon. Completely seamless for comfort and long wear. Handsome solid colors. One size fits all men's hands. Dependable warmth at a low price.
33 N 5719—Black
33 N 5720—Camel tan
33 N 5721—Char. gray
33 N 5722—Loden green
Shpg. wt. 2 oz. . . \$1.94

Seamless knit of 80% Creslan acrylic and 20% stretch nylon. Smooth-grain goatskin leather palm and welt around thumb seam. Combines knit comfort with the durability of leather. One size fits all men's hands.
33 N 5727—Camel tan
33 N 5728—Char. gray
33 N 5729—Black
33 N 5730—Brown
Shpg. wt. 3 oz. . . \$3.86

Blended for warmth, wear and a fine fit . . seamless knit is 50% wool, 30% fur fiber and 20% nylon. Handsome links fashion design on back. Smooth grain goatskin leather palm . . offers non-slip surface for driving.
State S, M or L.
33 N 5470F—Camel tan
33 N 5471F—Gray
Shpg. wt. 3 oz. . . \$2.86

Seamless knit is 55% wool, 30% raccoon fiber and 15% nylon. Pineapple pattern design on back of glove. Launder Leather® pigskin palm. Rib-knit wristlets assure a snug fit . . keep out cold.
State S, M or L.
33 N 5789F—Black
33 N 5790F—Char. gray
33 N 5791F—Camel tan
Shpg. wt. 3 oz. . . \$3.86



Creslan
ACRYLIC BLEND



Two-in-one Glove

Smooth grain Sudan cape-skin with handsome side panelling . . looks smart, improves fit. Elastic shirred wrists. Whip stitched with nylon thread. Removable seamless wool liner can be used as separate pair of gloves.
State S, M or L.
33 N 5572F—Black
33 N 5573F—Brown
Shpg. wt. 5 oz. . . \$6.77



DRESS SHIRTS

Sears Premiere Collection \$4.96

80% DURALON POLYESTER, 20% COMBED COTTON . . . so silky-smooth. Wash it, wear it . . . little or no ironing. Convertible cuffs. Machine wash, hot. Sanforized® maximum shrinkage 1%.

1 Slim taper. Snap-tab collar, short point, permanent stays.
33 N 75F—Blue stripe 33 N 78F—Solid blue
33 N 76F—Olive stripe 33 N 74F—White

State neck size, then sleeve length, chart 3. Shpg. wt. 1 lb. \$4.96

2 Full cut. Lynn collar, medium point and spread, perm. stays.
33 N 71F—Blue 33 N 72F—Olive 33 N 70F—White

State neck size, then sleeve length, chart 1. Shpg. wt. 1 lb. \$4.96

3 LONG STAPLE COMBED COTTON . . . light, soft, unusually comfortable. Sanforized . . . max. shrink. 1%. Machine wash, hot. Full cut. Lennon collar, round eyelet style. French cuffs.

Woven stripes. SuPima® . . . world's finest cottons.
33 N 222F—Blue Stripe 33 N 225F—Charcoal stripe

Solid colors. Luxurious 2x2 combed cotton broadcloth.
33 N 221F—Blue 33 N 226F—White

State neck size, then sleeve length, chart 1. Shpg. wt. 1 lb. \$4.96

Soft fine-weave Broadcloth \$3.96

4 100% COMBED COTTON . . . machine wash, hot. Sanforized . . . maximum fabric shrinkage 1%. Full cut. Court collar, fashionable long point looks neat with or without collar pin.

Woven stripes. Dressy French cuffs.
33 N 89F—Olive stripe 33 N 88F—Blue stripe

Frosty SuPima® whites. Softer, stronger than ordinary cotton.
33 N 86F—French cuffs 33 N 87F—Button cuffs

State neck size, then sleeve length, chart 1. Shpg. wt. 1 lb. \$3.96

65% DURALON TYPE IV POLYESTER, 35% COMBED COTTON . . . that great stay-neat blend. Whites stay whiter, colors stay brighter. Extra long wear, too. Machine wash, hot . . . tumble dry, ready to wear without ironing. Sanforized . . . maximum fabric shrinkage 1%. Convertible cuffs.

5 Slim taper. Snap-tab collar, short point, permanent stays.
33 N 380F—White 33 N 381F—Blue 33 N 383F—Maize

State neck size, then sleeve length, chart 3. Shpg. wt. 1 lb. \$3.96

6 Slim taper. Stowe-Ivy collar, button down with button in back.
33 N 385F—Blue 33 N 386F—Tan 33 N 384F—White

State neck size, then sleeve length, chart 3. Shpg. wt. 1 lb. \$3.96

Wash and wear Cotton \$2.96

Drip-dry finish . . . machine washable in hot water. Sanforized . . . maximum fabric shrinkage 1%. Convertible cuffs.

7 Slim taper. Lawton-Ivy collar, medium point button-down with button, hanger loop, box pleat in back. Oxford cloth.

33 N 185F—Maize 33 N 183F—Blue
33 N 184F—Tan 33 N 182F—White

State neck size, then sleeve length, chart 3. Shpg. wt. 1 lb. \$2.96

8 Full cut. Lynn collar, medium point and spread with permanent stays. Soft combed cotton broadcloth.

33 N 42F—Tan stripe 33 N 43F—Olive stripe
33 N 41F—Blue stripe 33 N 40F—White

State neck size, then sleeve length, chart 1. Shpg. wt. 1 lb. \$2.96

9 Slim taper. Snap-tab collar, short point with permanent stays. Combed cotton woven checks have a relaxed manner.

33 N 169F—Olive 33 N 168F—Tan 33 N 167F—Blue

State neck size, then sleeve length, chart 3. Shpg. wt. 1 lb. \$2.96

SIZE CHART 1		SIZE CHART 3	
Neck size	Sleeve length	Neck size	Sleeve length
14	32, 33	14	32, 33
14½	32, 33, 34	14½	32, 33, 34
15	32, 33, 34, 35	15	32, 33, 34, 35
15½, 16	32, 33, 34, 35	15½	32, 33, 34, 35, 36
16½, 17	32, 33, 34, 35	16, 16½	32, 33, 34, 35, 36

NOTE: Slim taper shirts have about 4 inches taken out of waist.

PURE SILK TIES. Fashionable block-stripes. 2¼-inches wide.

33 N 3787—Shown on figure 1 33 N 3788—Shown on figure 2
33 N 3789—Shown on figure 3

Shipping weight 5 ounces. each \$1.94





4

7



5



6



8



9

PCCKM
AEDSLG 475

Best-fitting Stretch Socks we've ever sold

Never bind, never stretch out of shape . . . new corespun process insures a perfect lasting fit . . . one size fits 9½ to 14

It took three years of intensive research to reach this breakthrough in sock comfort. Every yarn in the sock surrounds a stretch fiber core . . . gives you elasticity with greater resilience than ever before. If you could afford custom-made socks, they couldn't fit better than these. Machine wash, med.

Over-the-Calf Length . . . stay up, never droop.

1 60% Dacron® polyester for strength and 34% combed cotton for soft absorbent comfort and 6% Lycra® Spandex for lasting stretch. Ribbed to toe. Flat-knit sole.

83 N 2013—Black 83 N 2014—Dark gray
83 N 2015—Navy
Shipping weight pair 4 oz. \$1.45; 3 prs. \$4.29

2 100% Orlon® acrylic . . . softer than ever. Attractive cable-stitch panel with side ribbing to toe. Flat-knit sole.

83 N 2016—Black 83 N 2017—Brown
83 N 2018—Dark olive
Shipping weight pair 3 oz. \$1.45; 3 prs. \$4.29

Stack Length . . . 100% Orlon® acrylic.

3 Solid color, ribbed crew. **4** Neat diamond panel pattern.

83 N 2019—Black 83 N 2322—Charcoal gray
83 N 2020—Brown 83 N 2323—Light gray
83 N 2021—Light blue 83 N 2324—Navy
83 N 2022—White Shpg. wt. pair 2 oz.
94c. 3 pairs \$2.79 94c. 3 pairs \$2.79
*Registered DuPont Trademark



Over-the-Calf Length Support Hose . . . gently, firmly support your leg muscles, stay up . . . SANI • GARD action fights bacteria



5 65% wool, 29% stretch nylon and 6% Lycra spandex throughout leg. Dressy ribbed-to-toe pattern. 65% wool, 35% nylon foot. Regular (10-11½) and large (12-14). Please state R or L.

83 N 2004F—Black 83 N 2005F—Brown
83 N 2006F—Charcoal gray
Shipping weight pair 2 oz. \$1.95; 3 prs. \$5.79

6 Four-ply Ban-Lon® socks of Textralized nylon. Ribbed to toe. Stretch fiber in leg. Deep-cushioned sole for extra foot comfort.

Regular (10-11½) and large (12-14). Please state R or L.
83 N 2007F—Black 83 N 2008F—Navy 83 N 2009F—Brown
Shipping weight pair 3 oz. \$1.45; 3 prs. \$4.29

7 Proportioned-fit stretch nylon . . . fine gauge rib knit. Stretch fiber in leg. Flat-knit sole. Flawless fit, exceptional comfort.

S (9½-10½); MR (11-12, under 5 ft. 10 in.); MT (11-12, over 5 ft. 10 in.); L (12-14, under 6 ft. 2 in.); LT (12-14, over 6 ft. 2 in.).
83 N 2010F—Black 83 N 2011F—Brown 83 N 2012F—Char. gray
State S, MR, MT, L or LT. Wt. pair 3 oz. . . \$1.00; 3 prs. \$2.94



Fine-wale corduroy . . . luxurious Loungewear

Cotton corduroy plus high-fashion details create at-home styles that make memorable gifts. Lined shawl collar for smooth fit, shaped cuffs and contrasting piped edge trim. Two roomy waist pockets; GRIPPER® snap-fastener tie sash. Machine wash, medium.

In sizes small (34-36 inch chest); medium (38-40); large (42-44) and extra large (46-48). Please state S, M, L or XL.

1 Lounge Jacket in three quarter length. Embroidered crest.
33 N 8089F—Royal blue 33 N 8090F—Red
State S, M, L or XL. Shpg. wt. 1 lb. 8 oz. \$9.84

2 Full-length Robe with Schiffl embroidery on chest pocket.
33 N 8080F—Navy 33 N 8081F—Maroon
State S, M, L or XL. Shpg. wt. 1 lb. 13 oz. \$10.77

Tall sizes. State M, L or XL, only. Wt. 1 lb. 13 oz. 11.77
33 N 8082F—Navy 33 N 8083F—Maroon

Silk Ascots. Full-cut and rich looking. Fits all neck sizes.
33 N 3750—Navy and red paisley pattern shown with (1)
33 N 3783—Eggshell white solid shown with (2)
Shipping weight 2 ounces. \$2.95



ALSO IN
TALL
SIZES



1

2

3

4

5

6

ALSO IN
TALL
SIZES

Cotton Terry, thick and thirsty . . . it suits a man

3 Woven stripes in wash and wear terry. Softly looped, incredibly absorbent. Handsomely styled robe has a shawl collar that's edge stitched to keep its shape, tailored cuffs, three roomy pockets, tie sash. Machine washable, separately, medium. No ironing.

Small (34-36-inch chest), medium (38-40), large (42-44), extra large (46-48). State S, M, L or XL.

33 N 8358F—Blue 33 N 8359F—Red
Shipping weight 2 pounds. \$10.77

Tall sizes . . . for men over 6 feet. Blue. State M, L or XL only.
33 N 8360F—Shipping weight 2 pounds. \$11.77

4 Solid color robe personalized with his name or initials embroidered on the detachable chest pocket flap (order form and self addressed envelope are supplied with robe). Wash and wear robe has edge-stitched wide shawl collar, shaped cuffs, three pockets and tie sash. Machine washable, hot. No ironing needed.

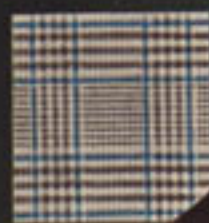
Small (34-36-inch chest), medium (38-40), large (42-44), extra large (46-48). Please state S, M, L or XL.

33 N 8329F—White 33 N 8330F—Blue 33 N 8331F—Sand tan
Shipping weight 2 pounds 9 ounces \$10.77

Tall sizes . . . for men over 6 feet. State M, L or XL only.
33 N 8338F—Blue 33 N 8339F—White
Shipping weight 2 pounds 9 ounces. \$11.77

5 Terry-Go-Round® is perfect after a shower. Has a handy pocket. Elasticized waistband with adjustable GRIPPER® snap fasteners provides a comfortable fit for any waist size from 28 to 42 inches.
33 N 8308—Blue, white trim 33 N 8309—White, blue trim
Shipping weight 8 ounces. \$1.77

6 Open-toe Terry Scuffs. Built-up wedge heel and toe of bouncy, long-wearing "Softec" rubber. Piped edge trim. Mach. wash, med.
Sizes S (shoe sizes 7-8), M (9-10), L (11-12). State S, M, L.
33 N 8318F—Blue 33 N 8319F—White
Shipping weight 9 ounces. \$1.77



ALSO IN TALL SIZES



3

Wash 'n wear Oxford Cloth

S(34-36-inch chest); M(38-40); L(42-44); XL(46-48). Please state S, M, L or XL.

1 A slim-lined notched collar, black trimmed to match the narrow cuffs and sash. Glen plaid woven of 100% combed cotton. Machine wash, hot. Gripper® snap fastener sash; 3 pockets.

State S, M, L or XL.
33 N 8162F—Blue
33 N 8163F—Red
Shipping weight 1 lb. 2 oz. \$9.84

Tall sizes for men 6 feet and over.
State size as above M, L or XL only.
33 N 8164F—Blue
33 N 8165F—Red
Shipping weight 1 lb. 2 oz. \$10.77

Tartan-trim Robe, Scuffs

2 Wash 'n wear cotton broadcloth with MacKenzie Tartan plaid on cuffs and shawl collar. Three pockets, Gripper® snap fasteners hold sash in place. Machine wash, med. Little or no ironing.

State S, M, L or XL.
33 N 8140F—Navy
33 N 8141F—Burgundy
Shipping weight 1 lb. 2 oz. \$7.77

3 Espadrille . . Tartan bonded to white terry lining. Playsole® polyvinyl foam rubber cushion insoles.
State shoe size 8, 9, 10, 11 or 12.
33 N 8142F—Shpg. wt. 14 oz. \$2.97

Sanforized Cotton Flannel

So comfortable, warm and long wearing, he'd never guess a price this low. All cotton. Machine washable, hot. Maximum fabric shrinkage is only 1%.

Smooth looking shawl collar, cuffed sleeves plus snap-fastener tie sash.
S(34-36-in. chest); M(38-40); L(42-44); XL(46-48). State S, M, L or XL.
33 N 8236F—Blue
33 N 8237F—Red
Shipping weight 1 lb. 5 oz. \$5.84

Tall sizes for men 6 ft. and over. State M, L or XL only.
33 N 8246F—Blue
33 N 8247F—Red
Shipping weight 1 lb. 5 oz. \$6.84



ALSO IN TALL SIZES

100% Virgin Wool . . unmistakable luxury with exceptional warmth and wear

Here is quality in fabric and design with special attention given to details . . for example: the smooth shawl collar is lined for shape retention; the cuffs are shaped and tailored; the sash will not slip thanks to Gripper® snap fasteners and the pockets are generously large. Handsomely boxed for holiday gift giving.

Small (34-36-inch chest), medium (38-40); large (42-44); extra large (46-48). Please state S, M, L or XL.

Clon Tartans, colorfully woven, yet machine washable (in warm water). Distinctive button trimmed cuffs.

4 33 N 8052F Dress Campbell Tartan
5 33 N 8053F Royal Stewart Tartan
Shipping weight 3 pounds. \$16.77

6 Solid color with Schifflli embroidered blazer crest on the chest pocket. Dry clean.
33 N 8058F—Navy 33 N 8059F—Maroon
Shipping weight 3 pounds. \$14.77



4

6

5

PCBKM 2 SEARS 479



1



2



Full cut for his sleeping comfort . . Sanforized Broadcloth Pajamas

Soft, smooth cotton broadcloth has a lasting luster. Machine wash, hot . . max. shrinkage 1%.
Pajamas have chest pocket, cuffs on sleeves and pants. **NOZZLE**® "live-rubber" waistband. **GRIPPER**® snap-fastener adjustable waist, fly closings.
Sizes A (34-36-inch chest), B (38-40), C (42-44), D (46-48) and E (50-52).

1 Matching Robe and Pajama Set designed for the well-dressed man at ease. Robe has shawl collar, 3 pockets, wide cuffs. Gripper snap-fastener tie sash. Automatic wash and wear.

Set. *State size A, B, C or D only.*
33 N 1195F—Olive 33 N 1192F—Blue
Shipping weight 2 pounds 4 ounces \$9.44

Robe. *State size A, B, C or D only.*
33 N 1193F—Olive 33 N 1190F—Blue
Shipping weight 1 pound 2 ounces \$5.80

Pajamas. *State size A, B, C or D only.*
33 N 1194F—Olive 33 N 1191F—Blue
Shipping weight 1 pound 2 ounces \$3.86

2 Foulard-and-stripe design, piped edge trim. Button coat. *State size A, B, C or D only.*
33 N 1151F—Gray 33 N 1150F—Blue
Shipping weight 1 pound 3 ounces \$4.86

Pullover (middy style). *State size B, C or D only.*
33 N 1152F—Blue
Shipping weight 1 pound 3 ounces \$4.86

3 Shirting checks with Schiffler embroidered design on chest. Easy care . . no need to iron.
33 N 1028F—Blue 33 N 1029F—Tan
State size A, B, C, D only. Wt. 1 lb. 2 oz. . . \$3.86

4 Patterned top, solid-color pants and trim. Wash and wear . . iron only if you insist.

Button coat. *State size A, B, C, D or E.*
33 N 1021F—Wine 33 N 1020F—Blue
Shipping weight 1 pound 2 ounces \$3.86

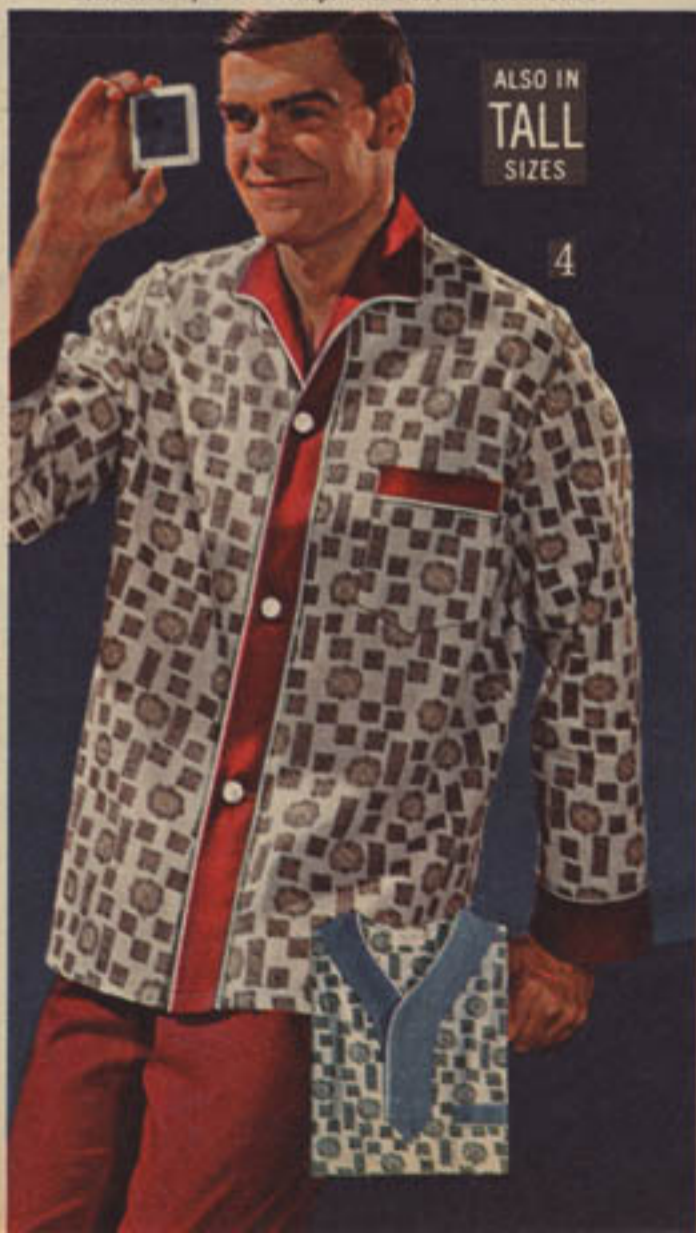
Pullover (middy style). *State size A, B, C, D only.*
33 N 1023F—Wine 33 N 1022F—Blue
Shipping weight 1 pound 2 ounces \$3.86

Tall sizes for 6 ft. and over. Button coat.
33 N 1025F—Wine 33 N 1024F—Blue
State size B, C or D only. Wt. 1 lb. 2 oz. . . \$4.25

Set Robe Pajamas
\$9.44 \$5.80 \$3.86



3



ALSO IN
TALL
SIZES

4



With a nod to
the Far East . .

1 Easy-care Mandarin Pajamas . . styled for his imperial comfort. Red top with majestic black and gold-colored dragons. Solid black pants have NOBELT® "live-rubber" waistband, GRIPPER® snap-fastener adjustable waist and fly closings. Easy-care cotton broadcloth. Machine wash, hot water . . maximum fabric shrinkage 3%. Made in U.S.A.

A (34-36-inch chest); B (38-40); C (42-44) and D (46-48).

State size A, B, C or D.

Shipping weight 1 pound 2 ounces.
33 N 1155F \$4.86

2 Wash and wear Kimono Pajamas . . ideal for lounging. Wrap-around comfort with deep half sleeves, full sash belt, plus 2 extra large pockets. Pants hit just below knee; drawstring waist, button fly.

Cotton broadcloth is wash and wear . . you touch-up iron at most. Mach. wash, hot . . max. fabric shrink. 1%.

A (34-36-inch chest); B (38-40); C (42-44) and D (46-48).

State size A, B, C or D.

33 N 1027F—Green

33 N 1026F—Blue

Shipping weight 1 lb. 1 oz. . . \$3.80

65% Duralon polyester
35% Combed Cotton

3 Easy care . . machine wash, machine dry with no loss of luxury. Chest pocket; cuffs on coat and pants. NOBELT waistband. GRIPPER snap fasteners at waist, fly closings.

A (34-36-inch chest); B (38-40); C (42-44); D (46-48); E (50-52).

Shipping weight 1 lb. 3 oz.

33 N 1101F—Tan

33 N 1100F—Blue

State A, B, C, D or E \$4.86

33 N 1102F—Gray

33 N 1103F—Green

State B, C, D only 4.86

Tall sizes . . for men 6 ft. and over.

33 N 1104F—Blue

33 N 1105F—Tan

State B, C, D only. Wt. 1 lb. 5 oz. \$5.25



Luxurious Nylon Tricot
. . our finest Pajamas

\$8.77

He's sure to be comfortable in these extra smooth and silky pajamas. Easy to care for, too. Machine washable, medium temperature . . dries in a wink, never needs ironing. Max. fabric shrinkage 1%.

Solid colors with contrasting piped edge trim. One chest pocket, cuffs on coat and pants. Self-covered all around elastic waistband. Boxed.

A (34-36-inch chest); B (38-40); C (42-44) and D (46-48). State size A, B, C or D.

33 N 1187F—Blue 33 N 1186F—Navy

33 N 1188F—Bamboo

Shipping weight 1 pound 5 ounces \$8.77



FLANNELETTES . . warm and colorful

Full cut for his sleeping comfort. Cotton flannelette is napped for extra softness. Sanforized® . . maximum fabric shrinkage 1%.
In sizes A(34-36-inch chest), B(38-40), C(42-44) and D(46-48).

(1), (2) and (3) have GRIPPER® snap-fastener adjustable waist and fly closings plus NOBELT® live-rubber waistband. Machine wash, med.

1 Bright red and blue Norwegian ski design. Jac-shirt style top has double-knit collar, cuffs and banded bottom. Red pants.

State size A, B, C or D. Wt. 1 lb. 3 oz.
33 N 1275F.....\$4.86

2 Soft chalk stripes with solid color trim on collar, coat cuffs, top of pocket.

Button coat. State size A, B, C or D.
33 N 1271F—Olive 33 N 1270F—Blue
Shipping weight 1 lb. 3 oz.....\$3.86

Pullover (middy style). State size A, B, C or D.
33 N 1273F—Olive 33 N 1272F—Blue
Shipping weight 1 lb. 3 oz.....\$3.86

Tall sizes . . 6 ft. and over. Blue button coat.
State size B, C or D only. Wt. 1 lb. 3 oz.
33 N 1274F.....\$4.25

3 Smart solid colors with piped edge trim.
33 N 1210F—Blue 33 N 1212F—Red
33 N 1214F—Tan

State size A, B, C or D. Wt. 1 lb. 3 oz. . . \$3.86

4 Bright red nightshirt with white piping. Hand washable separately.

State size A, B, C or D. Shpg. wt. 14 oz.
33 N 1296F.....\$3.86

5 Clever red nightcap to match (1) and (4). Hand washable separately.

One size fits all. Shipping weight 3 oz.
33 N 129784c



No-iron rib knits \$3⁸⁶

Comfortable cotton knits to keep him warm. Machine wash, medium. "Fabric-Set" to keep shrinkage at a minimum. Nobelt elastic waistband. A(34-36-in. chest), B(38-40), C(42-44), D(46-48).

6 Tall Sizes for men 6 ft. and over.
33 N 1350F—Light blue with navy pants
33 N 1351F—Tan with brown pants
State size B, C, D only. Shpg. wt. 1 lb. 3 oz. \$3.86

7 Smart V-trim on chest with rib-knit insert.
33 N 1346F—Navy 33 N 1347F—Brown
State size A, B, C or D. Shpg. wt. 1 lb. 1 oz. \$3.86

Soft cotton broadcloth \$2⁹⁰

Full cut. Gripper snap-fastener adjustable waist, fly closings. Elastic waistband. Machine wash, hot . . maximum shrinkage 1%. A(34-36-in. chest), B(38-40), C(42-44), D(46-48).

8 Smart foulard print set on blazer stripes. Button coat.
33 N 1010F—Blue 33 N 1011F—Tan
State size A, B, C or D. Wt. 1 lb. 2 oz. . . . \$2.90

Pullover style.
33 N 1012F—Blue 33 N 1013F—Tan
State size A, B, C or D. Wt. 1 lb. 2 oz. . . . \$2.90

9 Solid color with piped-edge trim. Button coat.
33 N 1116F—Blue 33 N 1118F—Green
State size A, B, C or D. Wt. 1 lb. 2 oz. . . . \$2.90



ALSO IN
TALL
SIZES

ELEGANCE in patterns and fabrics

Our finest sport shirts are fashioned to bring joy to his leisure-lovin' life. All have the regular spread collar with permanent stays. Machine wash, medium . . . maximum fabric shrinkage 3%.

Small (14-14½-inch neck), medium (15-15½), large (16-16½), extra large (17-17½).

Shirt-Jacks . . . casual comfort in a gentlemanly manner. Tapered and tailored to be worn outside like a jacket. Button tabs at waist adjust for individual fit. Two waist pockets.

1 Lustrous solid colors. Sharkskin . . . a smooth, full bodied suiting fabric. 75% rayon, 25% acetate.

Long sleeves with 2-button adjustable cuffs.
33 N 651F—Blue 33 N 652F—Olive 33 N 653F—Gray
State size S, M, L or XL. Shipping weight 1 pound \$5.77

Short hemmed sleeves.
33 N 3016F—Blue 33 N 3017F—Olive 33 N 3018F—Gray
State size S, M, L or XL. Shipping weight 1 pound \$4.77

2 Vertical accent stripes set on luxurious shirt front of 92% combed cotton, 8% silk. Rest of shirt is 100% textured rayon.

Long sleeves with 2-button adjustable cuffs.
33 N 654F—Black, red stripes 33 N 655F—Black, blue stripes
State size S, M, L or XL. Shipping weight 1 pound \$5.77

Short hemmed sleeves.
33 N 3019F—Black, red stripes 33 N 3020F—Black, blue stripes
State size S, M, L or XL. Shipping weight 1 pound \$4.77

Premiere cotton-and-silk Sport Shirts . . . steeped in rich color, soft and silky to the touch. Textured fabric of 92% 2-ply combed cotton, 8% silk. Full cut with long sleeves, set-in chest pocket.

3 Classic stripes are in quiet good taste.
33 N 656F—Cranberry 33 N 657F—Blue
State size S, M, L or XL. Shipping weight 1 pound \$6.77

4 Dressy solid colors, Schifflli embroidered motif above pocket.
33 N 658F—Gold color 33 N 659F—Gray 33 N 660F—Blue
State size S, M, L or XL. Shipping weight 1 pound \$6.77

5 Oversize block-plaid brings out the look and luster of silk.
33 N 662F—Blue 33 N 663F—Brown
State size S, M, L or XL. Shipping weight 1 pound \$6.77





Lustrous IRIDESCENT colors

Rich "living color" tones . . . the dressy look in Men's Sport Shirts

Small (14-14½-inch neck), medium (15-15½), large (16-16½), extra large (17-17½).

SLIM TAPER . . . slimmed 4-inches at waist for the lean, youthful look you like. Button-down collar, back pleat, hanger loop—naturally. Chest pocket. Long dress-shirt type tails.

100% combed cotton in fashionable high-luster colors. Automatic wash and wear . . . ready to wear without ironing. Machine washable, hot water . . . maximum fabric shrinkage 2%.

1 Popular chalk stripes, dressy "hi-boy" collar.

State size S, M, L or XL.
33 N 664F—Red 33 N 665F—Gold
Shipping weight 1 pound \$3.86

2 Solid colors he'll want to show off.

State size S, M, L or XL.
33 N 666F—Gold 33 N 667F—Red
33 N 668F—Blue
Shipping weight 1 pound \$3.86

3 Shirting checks . . . neat and rich looking.

State size S, M, L or XL.
33 N 669F—Olive 33 N 670F—Red
33 N 671F—Tan
Shipping weight 1 pound \$3.86

FULL CUT. Regular spread collar, permanent stays. Square bottoms to wear outside or tucked in. Luxury fabrics have a gentle sheen. Machine washable, medium temp . . . max. shrinkage 3%.

4 Dark tone stripes set on polished challis fabric of 70% rayon, 30% acetate.

State size S, M, L or XL.
33 N 672F—Blue 33 N 673F—Olive
Shipping weight 1 pound \$3.86

5 Handsome all-over figures woven into lightly textured fabric. 55% combed cotton and 45% acetate . . . soft, colorful, comfortable.

State size S, M, L or XL.
33 N 674F—Aqua 33 N 675F—Soft gold
Shipping weight 1 pound \$3.86

6 Solid colors with distinctive embroidered motif on pocket. Soft-to-the-touch challis fabric of 75% rayon and 25% acetate.

State size S, M, L or XL.
33 N 676F—Tan 33 N 677F—Blue
33 N 678F—Gray
Shipping weight 1 pound \$3.86

soft TEXTURED interest

Sport shirts of wash and wear Perma Smooth® combed cotton. Mach. wash, hot. Max. fabric shrinkage 1%.

Small (14-14½-inch neck), medium (15-15½), large (16-16½) and extra large (17-17½).

FULL CUT with long shirttails. Soft cotton with look and feel of Oxford cloth. Treated with Scotchgard® brand stain, water repeller. Regular spread collar.

1 Classic woven plaid. *State size S, M, L or XL.*
33 N 679F—Pewter 33 N 680F—Gray
Shipping weight 1 pound.....\$4.86

Tall sizes for men 6 ft. or over. *State size M, L, XL only.*
33 N 879F—Pewter 33 N 880F—Gray
Shipping weight 1 pound.....\$4.86

2 Smart woven stripes. *State size S, M, L or XL.*
33 N 681F—Blue and gray 33 N 682F—Green and gray
33 N 683F—Brown and gray
Shipping weight 1 pound.....\$4.86

Tall sizes for men 6 ft. or over. *State size M, L, XL only.*
33 N 881F—Blue and gray 33 N 882F—Green and gray
33 N 883F—Brown and gray
Shipping weight 1 pound.....\$4.86

SUM TAPER . . 4 inches trimmer at waist. 3-button banded collar, back loop, long shirttails.

3 Tablecloth check woven into lightly brushed twill.
33 N 684F—Cranberry 33 N 685F—Blue
33 N 686F—Green
State size S, M, L or XL. Shipping weight 1 lb.\$4.86

4 Solid colors with random black thread for heather look.
33 N 699F—Light blue 33 N 700F—Pewter
33 N 701F—Gray
State size S, M, L or XL. Shipping weight 1 lb.\$4.86

Tall sizes for men 6 ft. and over. *State size S, M, L, XL.*
33 N 889F—Light blue 33 N 890F—Pewter
33 N 891F—Gray
Shipping weight 1 pound.....\$4.86

5 Muted Madras-type plaids, woven in America. Wash-fast colors.
33 N 702F—Cranberry 33 N 703F—Pewter
State size S, M, L or XL. Shipping weight 1 lb.\$4.86



Brushed again and again to bring out the shaggy texture of Mohair Blend Sweaters

Knit-on ribbed cuffs, bottom. Hand wash, separately. In sizes small (34-36-inch chest), medium (38-40), large (42-44) and extra large (46-48).

1 Cadet-style coat, designed for casual living. Neat jacquard pattern in a blend of 50% lamb's wool, 25% mohair and 25% Orlon® acrylic. Full length zipper closure. 33 N 1991F—White 33 N 1992F—Blue
State S, M or L only. Shpg. wt. 1 lb. 8 oz. \$9.86

2 Dashing new version of the crew neck button coat. Soft, smooth knit is 65% lamb's wool, 25% mohair and 10% nylon. Narrow rib-knit border trims collar, button closure. 33 N 1993F—Camel tan 33 N 1994F—Charcoal
33 N 1995F—Olive
State size S, M, L or XL. Shpg. wt. 1 lb. 8 oz. \$8.86

3 Bold stripes, soft colors . . . just what it takes to make a big hit on campus. Thick knit blend of 50% mohair, 50% wool is highly brushed to look and feel luxuriously soft. 33 N 1999F—Tan 33 N 2000F—Light blue
State S, M or L only. Shpg. wt. 1 lb. 10 oz. \$12.86

4 Classic v-neck pullover. 50-50 blend of mohair and wool, vigorously brushed for an ultra-shaggy, burly surface. Soft heather colors. 33 N 2104F—Blue 33 N 2105F—Burgundy
33 N 2106F—Camel tan
State S, M, L or XL. Shpg. wt. 1 lb. 8 oz. \$8.86

5 Elegant 6-button cardigan is 50% wool . . . the rest is plush mohair. Brushed to a thick, plush shag. Two handy set-in pockets. Heather colors. 33 N 2107F—Burgundy 33 N 2108F—Blue
33 N 2109F—Camel tan
State S, M, L or XL. Shpg. wt. 1 lb. 10 oz. \$10.86

Long Sleeve Turtle Neck Knit Shirt, shown on figures 2 and 3. Soft brushed cotton. Machine washable, warm. 33 N 1860F—White 33 N 1861F—Black
State size S, M, or L only. Shpg. wt. 10 oz. \$1.86



Give him a sweater that stays new looking after machine washing and drying

Machine wash, medium temperature . . . tumble dry.
Small (34-36 inch chest); medium (38-40); large (42-44) and extra large (46-48).

65% wool and 35% Kodel® polyester gives the look and feel of wool with the strength and wear of polyester.

1 Embroidered "V" design accents the double rib-knit collar. Knit-on (not sewn on) ribbed bottom, cuffs.
33 N 2122F—White 33 N 2123F—Blue
State S, M or L only. Wt. 1 lb. 3 oz. \$11.86

2 Embroidered-design cardigan with contrasting color trim around the collar and button closure. Set-in waist pockets with ribbed tops. Ribbed bottom, cuffs.
33 N 2129F—Olive 33 N 2131F—Black
State S, M, L or XL. Shpg. wt. 1 lb. 12 oz. . . . \$12.86

40% Kodel polyester, 30% mohair and 30% wool . . . brushing gives these handsome knits a special softness.

3 Textured "V" collar compliments the natural texture. Rib-knit collar, cuffs and bottom.
33 N 2149F—Light camel tan
33 N 2150F—Gray 33 N 2151F—Blue
State S, M or L only. Shpg. wt. 1 lb. 7 oz. \$8.86

4 Panel texture adds to the lean cardigan lines. Heraldic emblem buttons. Rib-knit bottom, cuffs.
33 N 2157F—Gray
33 N 2158F—Lt. camel 33 N 2159F—Blue
State S, M, L or XL. Shpg. wt. 1 lb. 7 oz. \$9.86

Orlon® acrylic . . . super softness and strength.

5 Jacquard pattern gives the popular ski look. Double-fabric crew collar. Rib-knit bottom, cuffs.
33 N 2160F—Black 33 N 2161F—White
State S, M or L only. Shpg. wt. 1 lb. 4 oz. \$6.86

6 Sayelle sweater of crimped Orlon® acrylic with especially brilliant colors in a Scandinavian chest pattern. Heraldic-emblem buttons. Ribbed double-fabric collar. Rib-knit bottom and cuffs.
33 N 2152F—Gold-color 33 N 2153F—Blue
State S, M or L only. Shpg. wt. 1 lb. 6 oz. \$10.86

Turtle-neck Dickey of 100% Orlon® acrylic. Turn-down collar. Shown under sweaters 1 and 3. One size fits all men.
33 N 1912—White 33 N 1913—Black
Shipping weight 8 ounces \$2.86
*Registered DuPont trademark.



Luxurious Sweaters

The first time a lamb is shorn, its wool is the softest, warmest—the finest it will ever produce. It is called Lambs Wool



Suede leather creates a new dimension in sweater elegance and enhances the softness and warmth of lamb's wool. Cardigan styles have rib-knit borders, cuffs, double fabric bottom. Dry clean.

Sizes small (34-36-inch chest); medium (38-40); large (42-44); extra large (46-48). Please state S, M, L or XL.

1 Striking is the word for this rich combination of a lamb's wool body with a V-striped front panel of genuine suede leather.

33 N 2271F—Olive combination 33 N 2272F—Tan combination
Shipping weight 1 pound 6 ounces.....\$16.86

2 Solid color suede leather contrasts in both color and texture with the body of the sweater. Saddle shoulder in front with set-in back adds comfort to the fit and style to the lines. Two set-in waist pockets. A sweater he'll treasure for years.

33 N 2273F—Gray combination 33 N 2274F—Tan combination
Shipping weight 1 pound 6 ounces.....\$16.86

Full-fashioning and saddle shoulders go together for unsurpassed comfort and a bold, square-shouldered look. They're knit to fit . . . not cut or stretched. Virgin lamb's wool for extra gentleness, warmth and wear. Knit on rib-knit bottom, cuffs. Hand washable, separately.

Sizes small (34-36-inch chest); medium (38-40); large (42-44); extra large (46-48). Please state S, M, L or XL.

3 The slipover has a rib-knit V-neck collar that has been looped on for a neater look and more comfortable fit.

33 N 2218F—Navy 33 N 2219F—Camel 33 N 2220F—Burgundy
Shipping weight 1 pound 2 ounces.....\$9.86

4 The cardigan with rib-knit patch pockets . . . a new look. Double fabric rib-knit button border and collar.

33 N 2258F—Camel 33 N 2259F—Navy 33 N 2260F—Burgundy
Shipping weight 1 pound 4 ounces.....\$12.86

Australian virgin lamb's wool in soft heather tone colors. So smooth and light in weight . . . made even softer by pre-washing. These two classic styles have rack-stitching and contrast tipping along the collar and button border as well as on the pockets. Rib-knit bottom. Hand washable, separately.

Sizes small (34-36-inch chest); medium (38-40); large (42-44); extra large (46-48). Please state S, M, L or XL.

5 Cardigan coat. Rib knit cuffs.
33 N 2214F—Lt. oxford gray
33 N 2215F—Tan heather
Shpg. wt. 1 lb. 4 oz.....\$7.86

6 Vest. Hemmed armholes.
33 N 2216F—Tan heather
33 N 2217F—Lt. oxford gray
Shipping weight 1 lb....\$5.86



begin with fine wools

Virgin wools, plus mohair and wool blends in sweater styles destined to become classics

Thick and thin yarns of 100% virgin wool, knit to look handmade, in brawny tweed effect with strictly masculine appeal. Have a fresh new look about them. Combines rugged warmth with lightweight comfort. Knit-on ribbed bottom and cuffs. Hand washable, separately.

Sizes small (34-36-inch chest); medium (38-40); large (42-44); extra large (46-48). Please state S, M, L or XL.

7 The slipover with rib-knit collar in popular V-neck styling.
33 N 2045F—Shipping weight 1 pound 7 ounces. . . . \$10.86

8 The cardigan with rib-knit button border, collar, pocket trim.
33 N 2046F—Shipping weight 1 pound 12 ounces. . . . \$13.86

Half mohair, half wool in a knit that has been so highly brushed, its texture and depth make it look handmade. Both styles have knit-on ribbed cuffs and bottom. Hand washable, separately.

Sizes small (34-36-inch chest); medium (38-40); large (42-44). Please state S, M or L.

9 The sculptured solid slipover. V-neck double-fabric ribbed collar.
33 N 2162F—Blue 33 N 2163F—Winter white
Shipping weight 1 pound 7 ounces. . . . \$10.86

10 The cardigan uses 2 colors, richly blended, to accent textured, patterned design. Hidden button border, rib-knit underfacing.
33 N 2167F—Gray, white 33 N 2168F—Brown, white
Shipping weight 1 pound 8 ounces. . . . \$12.86

Mohpaca, mohair and wool teamed up in the popular random links stitch has an alpaca look to it, yet is unique in texture and feel. These sweaters, blended of 65% mohair and 35% wool, are second to none for style and comfort. For an entirely new treatment, the front presents a smooth tailored look with a hemmed bottom and side button trim, while the back has a knit-on ribbed bottom. Generously full sleeves with snug rib-knit cuffs. Hand wash, separately.

Sizes small (34-36-inch chest); medium (38-40); large (42-44); extra large (46-48). Please state S, M, L or XL.

11 The cardigan coat has a hidden button border and collar with rib-knit underfacing. Double fabric cuffs. Two set-in pockets.
33 N 2171F—Light gold 33 N 2172F—Olive
33 N 2173F—Black 33 N 2175F—Blue
Shipping weight 1 pound 10 ounces. . . . \$12.86

12 The slipover emphasizes the V-design in the form of the boldly striped panel on the front. V-neck collar.
33 N 2178F—Olive 33 N 2179F—Blue
Shipping weight 1 pound 8 ounces. . . . \$12.86





Ban-Lon® Knits of supersoft 100% Textralized® nylon

Hard to believe anything so soft can wear so well... won't shrink or stretch. Machine washable, warm.

1 Shirt-Jac has striped panel front in links stitch; interlock knit sleeves, back. Long point fashion collar, button border, cuffs and bottom.
State S, M or L only.

Long Sleeves.
33 N 1467F—Black
33 N 1468F—Tan
Shipping weight 15 oz... \$7.86

Short Sleeves.
33 N 1469F—Tan
33 N 1470F—Black
Shipping weight 13 oz... \$6.86

Shirt and Sock Sets. Socks... one size fits sizes 10 to 13.
Please state shirt size S, M, L or XL.

2 Contrast color tipped; simulated full-fashioning at armholes. Textured collar, placket. Cushion-sole crew socks.

Long Sleeves. Short Sleeves.
33 N 1471F—Bottle green 33 N 1473F—Light tan
33 N 1472F—Light tan 33 N 1474F—Bottle green
Shpg. wt. 1 lb... \$6.86 Shpg. wt. 13 oz... \$5.86

3 Solid color with textured design front, mitered across bottom. Textured collar and placket. Crochet stitch socks.

Long Sleeves. Short Sleeves.
33 N 1475F—Burgundy 33 N 1477F—Blue
33 N 1476F—Blue 33 N 1478F—Burgundy
Shpg. wt. 1 lb... \$7.86 Shpg. wt. 13 oz... \$6.86



100% Orlon® Sweater Shirt

The acrylic with the feel of cashmere in a knit that's lightweight, warm and comfortable. Handsomely striped front panel with solid color rib-knit fashion collar and 2-button placket. Ribbed bottom and cuffs. Machine washable, medium.
Please state S, M or L only.

Long Sleeves. Short Sleeves.
33 N 1792F—White 33 N 1794F—Gray
33 N 1793F—Gray 33 N 1795F—White
Wt. 1 lb. 5 oz... \$4.86 Wt. 1 lb. 3 oz... \$3.86

Orlon Velour... with 2-way Collar

Wear it as a neat turtleneck or a club collar style. The 100% virgin Orlon acrylic in a smooth surfaced fabric with a short, thick pile looks like velvet. Warm and wonderfully soft. Rib-knit collar, cuffs and bottom. Machine washable separately, medium temperature. Tumble dry.

Please state S, M or L only.
33 N 1796F—Ski blue 33 N 1797F—Tan
33 N 1798F—Bottle green
Shipping weight 1 lb. 2 oz... \$5.86

New Pullover Shirt-Jac... all cotton

It's a fresh idea designed to combine the best in knits with shirt-jac popularity. Corded multi-color V-panel... newest fashion look. Tailored collar with permanent stays. 2 waist pockets. Adjustable banded bottom. Machine wash, med.
Please state S, M or L only.

Long Sleeves. Short Sleeves.
33 N 1777F—Black 33 N 1784F—Red
33 N 1778F—Red 33 N 1785F—Black
Wt. 1 lb. 3 oz. \$4.86 Shpg. wt. 14 oz. \$4.86



Orlon® Blends . . soft, warm, machine washable

A SEARS 4-STAR VALUE . . BETTER BECAUSE 50% Orlon acrylic, 50% cotton flannel is woven in tartan plaids that resist fading. Machine washable, hot; drip or tumble dry. Semi-widespread top-stitched collar, permanent stays, concealed loop button. 2 flap pockets. Square-cut bottom.
 33 N 2607F—Red 33 N 2608F—Blue, green
 State S, M, L, XL. Wt. 1 lb. 6 oz. \$4.88

65% Orlon acrylic, 35% wool blended to be extra soft and warm . . never irritating. Colorfully woven plaids resist fading. Machine washable, medium temperature. Regular spread top-stitched collar. Two flap pockets. Lined yoke. Square cut bottom.
 State S, M, L or XL.
 33 N 2838F—Blue 33 N 2839F—Red
 Shipping weight 1 lb. 2 oz. \$5.88

21-wale Combed Cotton Corduroy . . it's the smoothest you can buy

Meticulous attention to details *plus* the extraordinary smoothness of the fabric makes this a shirt to be prized. De luxe single needle tailoring (as on the finest dress shirts), handsome regular spread collar with permanent stays, dress shirt placket on sleeves, square bottom for in or out wear. Machine washable, medium. Made in Jamaica.
 State S, M, L or XL.
 33 N 2721F—Red 33 N 2722F—Blue
 33 N 2723F—Beige 33 N 2724F—Light olive
 Shipping weight 1 lb. 2 oz. \$3.88



100% Cotton Flannels . . softly napped

Toasty warm, traditionally preferred for comfort, long wear. Machine wash, medium. Top-stitched collar with permanent stays. Two flap pockets. Square-cut bottom. Long sleeves.
 State S, M, L or XL.

1 Rich solid colors. Sanforized® . . maximum fabric shrinkage 1%.
 33 N 2530F—Brown
 33 N 2531F—Green
 33 N 2533F—Blue
 33 N 2534F—Burgundy
 Shipping weight 1 pound \$2.88

2 Woven plaids . . yarn dyed. Wash and wear, just drip dry. Self-fabric yoke. Max. shrinkage 2%.
 33 N 2620F—Olive
 33 N 2621F—Red
 33 N 2622F—Blue

Suedella Shirt-Jac

3 Blended of 90% cotton for softness and 10% rayon for strength. Napped for gentle warmth and suede-like look. Contrast stitching on placket, embroidered emblem on chest pocket. Adjustable side buttons. Machine wash, med.
 State S, M, L or XL.
 33 N 2623F—Light blue
 33 N 2624F—Medium blue
 33 N 2625F—Camel tan
 Shipping weight 1 lb. . . \$3.88



NOTE: All shirts on this page in sizes small (14-14½-inch neck); medium (15-15½); large (16-16½); ex. large (17-17½). State S, M, L or XL.



The distinctive look of imported sharkskin
 . . fine wool worsted and silk

\$16⁵⁰

1 A superb year 'round blend of imported fibers . . 79% wool and 21% lustrous silk. Cut with a critical eye to trimness . . neat single pleat and non-roll waistband.

Waists 30 to 42. For inseams see How to Order below, left.

N45 N 9492F—Charcoal gray

N45 N 9491F—Silver gray

N45 N 9497F—Heather brown

Shipping weight 1 pound 12 ounces \$16.50

Year 'round sharkskin of wrinkle-shy
 Dacron* and Virgin Wool Worsted

\$9⁷⁰

Men vote "AYE" for these richly tailored slacks because the blend of 55% Dacron* polyester, 45% wool keeps them neat looking . . always. Whatever the occasion, either dress or casual, they're the favored choice.

2 Plain-front model. Smashing favorite of all men with athletic builds and traditional tastes.

Waists 30 to 40. For inseams, see How to Order below, left.

45 N 7348F—Brown

45 N 7342F—Charcoal gray

45 N 7344F—Heather olive

Shpg. wt. 1 lb. 12 oz. \$9.70

3 Single pleat model. Carefully tailored to assure comfortable fit. Flatters every build.

Waists 30 to 44. For inseams, see How to Order below, left.

45 N 7331F—Medium gray

45 N 7336F—Blue

45 N 7338F—Brown

Shpg. wt. 1 lb. 12 oz. \$9.70



HOW TO ORDER: Be sure to check chart and specify your exact sizes. First, state *Waist*, then *Inseam Size* including height symbol S, R, or L, as "34-30 $\frac{1}{2}$ R" with cuffs, or as "34-30 $\frac{1}{2}$ RX" without cuffs.

If your height measures:	CUFFED Inseam Sizes:	CUFFLESS Inseam Sizes:
5 ft. 4 in. to 5 ft. 7 in. (Short)	27 $\frac{1}{2}$ S thru 30S	27 $\frac{1}{2}$ SX thru 30SX
5 ft. 7 $\frac{1}{2}$ in. to 5 ft. 11 in. (Regular)	29R thru 32R	29RX thru 32RX
5 ft. 11 $\frac{1}{2}$ in. to 6 ft. 3 in. (Long)	31 $\frac{1}{2}$ L thru 34 $\frac{1}{2}$ L	31 $\frac{1}{2}$ LX thru 34 $\frac{1}{2}$ LX

SAVE COSTLY ALTERATIONS when you buy Sears precisely tailored slacks. They're proportioned in the waist, seat, crotch, knee and individually cuffed (or cuffless, if you prefer) to give you custom like fit and comfort. See *How to Measure*, page 357.

The MAIN SLACK

Designed for the man who demands a great deal from the slacks he owns:

ALL-SEASON WEIGHT . .
70% Orlon* acrylic,
30% fine wool—comfort
in any weather

ALL-AROUND WEAR . .
at leisure, the office.
Anywhere. Anytime.

ALWAYS NEAT . . Orlon*
helps keep the slacks
virtually wrinkle-free
—fine wool worsted
gives body to the fabric

\$7⁸⁰

What's more, they're automatic wash and wear. Machine wash, warm. Need little, if any, ironing.

Each pair is cut over proportion-fit patterns and individually cuffed (or cuffless, if you prefer) to give you custom-like fit and comfort.

1 Plain-front Flannel. The classic model and weave traditionally favored by all men having trim, youthful builds.

Waists 30 to 40. For inseams see How to Order on opposite page.

45 N 6241F—Medium gray

45 N 6242F—Dark gray

45 N 6248F—Brown

Shipping weight 1 lb. 12 oz. . . \$7.80

2 Single-pleat gabardine. Distinctive tightly-woven weave in a smartly tailored style to flatter men of every build.

Waists 30 to 44. For inseams see How to Order on opposite page.

45 N 6106F—Dark blue

45 N 6102F—Charcoal gray

45 N 6108F—Dark brown

Shipping weight 1 lb. 12 oz. . . \$7.80

3 Plain-front plain weave. Has the look and feel of a fine worsted in the style demanded most by men with trim, youthful builds. Cuffed if you like.

Waists 30 to 40. For inseams see How to Order on opposite page.

45 N 6308F—Medium brown

45 N 6302F—Charcoal gray

45 N 6306F—Dark blue

Shipping weight 1 lb. 12 oz. . . \$7.80

*Registered Du Pont Trademark

For sport coat, see page 497



THE BLAZER...for adventure





What do you want in blazers? The traditional model? The cardigan? What fabric do you demand? Camel-hair? All-wool? Rayon?

Here's one of the most complete natural shoulder selections you'll find anywhere. See How to Order Sport Coat Chart on page 497.

Please state size when ordering.

1 100% camel hair Blazer. Our finest. Incredibly soft, impeccable fabric. Fully lined. Sizes 37R to 44R and 38L to 44L. N45 N 1976F—Shpg. wt. 2 lbs. 14 oz. \$49.50

2 Black rayon Blazer. Traditionally smart. Pocket lining pulls out for handkerchief effect. Sizes 36S to 42S, 35R to 46R, 37L to 46L. N45 N 1221F—Shpg. wt. 2 lbs. 12 oz. . . \$18.50

Red rayon Vest. Reverses to black. Adjustable back straps, welt pockets, and pointed bottom. Sizes 34, 36, 38, 40, 42, 44 and 46. 45 N 4109F—Shipping weight 15 oz. . . . \$3.75

3 Cardigan rayon Blazers. Rakish collarless style. Rayon ascot matches lining. Sizes 36S to 42S, 35R to 44R and 37L to 44L. N45 N 1234F—Dante red, figured ascot
N45 N 1226F—Indigo blue, polka-dot ascot
Shipping weight 2 lbs. 8 oz. \$18.50

4 All-wool cardigan Blazer. Classic black flannel. Sizes 36S to 42S, 35R to 44R, 37L to 44L. N45 N 1436F—Shpg. wt. 2 lbs. 6 oz. . . \$22.50

5 Wool-blend oxford weave Blazers. Unique. Today's smartest and most popular fabric for masculine tastes. Sizes 36S to 42S, 35R to 46R, 37L to 46L.

65% wool, 35% acrylic. Navy blue
N45 N 1833F—Shpg. wt. 2 lbs. 10 oz. . . \$32.50

72% wool, 28% Orlon* acrylic. Blue olive
N45 N 1808F—Shpg. wt. 2 lbs. 10 oz. . . \$32.50

6 All-wool flannel Blazer. The classic fabric. Simple, graceful lines, patch-flap pockets, metal buttons. The perennial favorite. Sizes 36S to 42S, 35R to 46R, 37L to 46L.
X45 N 1523F—Mediterranean blue
X45 N 1583F—Dirty camel
X45 N 1547F—Burgundy
X45 N 1517F—Navy blue (not shown)
Shipping weight 2 lbs. 15 oz. \$22.50

Extra tall sizes. Navy blue only. Chest sizes 40T, 42T, 44T and 46T. N45 N 1521F—Shpg. wt. 3 lbs. 2 oz. . . . \$23.50

All-wool flannel Vests. Adjustable back straps, welt pockets, 5 buttons and pointed bottoms. Sizes 34, 36, 38, 40, 42, 44 and 46.

45 N 4162F—Red 45 N 4161F—Navy
Shipping weight 15 oz. \$5.50

All vests have five shimmering buttons, adjustable back straps, welt pockets and pointed bottoms.

7 All-cotton corduroy Vest. Red reverses to cotton foulard lining. Sizes 34, 36, 38, 40, 42, 44 and 46. 45 N 4176F—Shipping weight 15 oz. . . . \$3.75

8 The Cocktail Vest of cotton velveteen. Red . . . sure to rake in compliments. Sizes 36, 38, 40, 42, 44 and 46. N45 N 4189F—Shipping weight 14 oz. . . \$9.75

9 All-wool Vests. Tartan-type plaid. Sizes 34, 36, 38, 40, 42, 44 and 46. 45 N 4181F—Black and white, red overplaid
45 N 4182F—Red and black, white overplaid
Shipping weight 14 ounces. \$5.50

10 Wool and camel hair Vest. 85% wool, 15% camel hair. Smacks of success. Luxuriously soft. Sizes 36, 38, 40, 42, 44 and 46. N45 N 4193F—Shipping weight 15 oz. . . \$9.75

*Registered DuPont Trademark





Let it RAIN:

These coats are treated to shrug off water.

Let it SHINE:

These coats keep their neat, good looks.

What's more, you can spot the expert tailoring at a glance . . . detailed sewing and careful pressing. Rakish Balmacaan collars, sleeve tabs and fly fronts . . . See How to Order Chart on page 497.



1 Iridescent plaids woven of 70% acetate, 30% combed cotton. Split-raglan sleeves, smart hacking-flap pockets.

Sizes 36S to 42S, 34R to 46R, 36L to 46L. *State even size only.*
 X45 N 63996F—Olive plaid
 X45 N 63956F—Blue plaid
 Shpg. wt. 3 lbs. 6 oz. . . \$17.90

With zip-liner. 100% Orlon® acrylic pile on cotton back.
 X45 N 64996F—Olive plaid
 X45 N 64956F—Blue plaid
 Shpg. wt. 4 lbs. 6 oz. . . \$27.50

2 Fine all-cotton fabric. Full-raglan sleeves, slash pockets.

With zip-liner of deep, acrylic pile on cotton back with nylon sleeves for added warmth.

Sizes 36R to 44R and 38L to 46L. *State even size only.*
 45 N 64901F—Black plaid
 45 N 64902F—Olive plaid
 Shpg. wt. 4 lbs. \$15.90

Matching Rainhat. Sizes 6¾, 6¾, 7, 7¾, 7¾, 7¾, 7¾.
 33 N 9913F—Black plaid
 33 N 9914F—Olive plaid
State size above. Wt. 9 oz. . . \$2.86

3 Just looking at this striking black raincoat, you'd swear it was a topcoat. The blend of 50% Fortrel® polyester and 50% Avril rayon captures the look of a fine twill worsted.

Split-raglan sleeves, hacking-flap pockets. And the rich, deep-red lining makes this coat as good looking on the inside as the outside.

Sizes 36S to 42S, 34R to 46R, 36L to 46L. *State even size only.*
 Shipping weight 3 lbs. 6 oz.
 N45 N 63916F \$25.00



4 Warm, earthy mixture of tan into clay, brown and smatterings of blue is accentuated by the classic oxford weave.

55% Orlon* acrylic is blended with 45% wool to give you a fabric that's rugged looking, yet extremely soft to the hand. Tailored shoulders, center vent.

State chest size 36S to 42S, 35R to 46R and 37L to 46L.

Shipping weight 2 lbs. 10 oz. N45 N 1392F.....\$22.50



CLASSIC favorites

Sport coats blended with only the finest wools for that natural drape men appreciate. Fabrics are soft. Patterns are rugged. See How to Order below.

1 Subtle dark gray check with a muted, masculine overplaid of deep burgundy. Sure to complement your finest gray or black slacks.

The fabric's a luxuriously soft blend of 75% wool and 25% Dacron* polyester. Tailored shoulders give that smart, lean look. Center vent.

State chest size 36S to 42S, 35R to 46R and 37L to 46L.

Shipping weight 2 lbs. 10 oz. N45 N 1622F.....\$29.50

2 Magnificent coloring of muted blue and brown-olive plaid on a tawny clay background.

Rugged blend of 80% wool, 20% finest alpaca. Tailored shoulders, center vent.

State chest size 35R to 46R, 37L to 46L. Wt. 2 lbs. 12 oz.

N45 N 1988F.....\$34.50

Gold vest. Reverses to olive. Cotton velveteen. Welt pockets. State even chest size 36 to 46.

45 N 4133F-Wt. 14 oz. ...\$8.50

3 The crisp, classic pattern of this black and white glen plaid is further enhanced by the richness of its burgundy overplaid.

Finest all-wool worsted fabric is tailored with clover-leaf lapels, side vents and two semi-hacking flap pockets. Tailored shoulders, center vent.

State chest size 36S to 42S, 35R to 46R and 37L to 46L.

Shpg. wt. 2 lbs. 8 oz. N45 N 1917F.....\$39.50

5 Here's herringbone at its traditional best—a gray all-wool "bone" with natural shoulders, lapped welt seams, hook vent and patch-flap pockets.

Sizes 36S to 42S, 35R to 46R, 37L to 46L. State chest size.

N45 N 1609F—Shpg. wt. 2 lbs. 14 oz. \$29.50

Red vest. Reverses to black. Cotton velveteen. 2 welt pockets on each side.

State even chest size 36 to 46. 45 N 4135F—Shipping weight 14 oz. ...\$8.50

HOW TO ORDER SPORT COATS AND ALL-WEATHER COATS

All-weather coats in even sizes only

See How to Measure on page 357. Make no size allowances

IF CHEST measures.....	34	35	36	37	38	39	40	42	44	46
IF HEIGHT is:										
5 ft. 4 in. to 5 ft. 7 in.....			36S	37S	38S	39S	40S	42S		
over 5 ft. 7 in. to 5 ft. 11 in..	34R	35R	36R	37R	38R	39R	40R	42R	44R	46R
over 5 ft. 11 in. to 6 ft. 3 in..			36L	37L	38L	39L	40L	42L	44L	46L
over 6 ft. 3 in. to 6 ft. 6 in....							40T	42T	44T	46T

1

Rayon Lined
\$39.50

Zip-Out
Pile Lining
\$42.00



2

\$39.50



3

\$44.00



Which would he prefer? Velvet-soft suede or supple Cabretta leather

1 Leisure Coat. Styled for easy comfort and good looks. Two lower-flap pockets, inside wallet pocket. Completely lined with rayon. Suede coat is treated with Quilon® to repel all non-oily stains.

Please state chest size 36, 38, 40, 42, 44 or 46.

41 N 3750F—Medium tan suede

41 N 3760F—Black Cabretta leather

Shipping weight 3 pounds 8 ounces.....\$39.50

With Zip-out Lining of warm, warm acrylic pile, cotton back. Zip out for spring and fall wear.

Please state chest size 36, 38, 40, 42, 44 or 46.

41 N 3756F—Medium tan suede

41 N 3766F—Black Cabretta leather

Shipping weight 4 pounds 2 ounces.....\$42.00

2 Two-button Sport Coat. Casual and handsome.

Hand-sewn effect stitching on collar, front and pocket flaps. Two lower pockets, inside wallet pocket. Completely lined with rayon. Suede coat is treated with Quilon to repel all non-oily stains.

Please state chest size 36, 38, 40, 42, 44 or 46.

41 N 3762F—Black Cabretta leather

41 N 3772F—Medium tan suede

Shipping weight 3 pounds 8 ounces.....\$39.50

3 Alpaca-pile lined Coat. Collar and body of coat lined with warm, luxurious-feeling alpaca, cotton back. Sleeves, rayon over 70% reprocessed wool, 30% unknown fibers batt. Two lower slash pockets.

Please state chest size 36, 38, 40, 42, 44 or 46.

41 N 3909F—Black Cabretta leather

41 N 3910F—Medium tan suede

Shipping weight 4 pounds 12 ounces.....\$44.00

Laminated Knit with panels of suede

\$21.50

A real style winner . . . suede panel front is Quilon treated for water and stain repellency. Knit is 50% wool and 50% cotton. Acrylic pile lined body, cotton back. Acetate quilted over 85% acrylic, 15% other fibers batt sleeves. Two pockets. Adjustable sides.

State even chest size 36 to 46 inches.

41 N 3254F—Medium brown, tan and teak (dk. brown) on tan knit

41 N 3255F—Tyrol green, covert gray and black on black knit

Shpg. wt. 3 lbs. \$21.50





ZePel® water-repellent and stain-resistant treated to keep the 65% Dacron® polyester and 35% combed cotton poplin cleaner longer. Long wearing too. 100% Acrilan® acrylic pile lining: sleeves, rayon twill quilted to 85% Orlon® acrylic, 15% other fibers.

1 Jacket. Elasticized nylon-knit inserts on cuffs and waist side. Welt, slash pockets.

State chest size 36, 38, 40, 42, 44 or 46 inches.
 41N 6501F—Charcoal gray 41N 6500F—Tan
 Shipping weight 3 pounds 2 ounces.....\$23.00

Tall sizes for men 6 feet and over.
 State chest size 38, 40, 42, 44 or 46 inches.
 41N 6504F—Charcoal gray 41N 6503F—Tan
 Shipping weight 3 pounds 4 ounces.....\$24.50

2 Surcoat. Side vents have zipper.

State chest size 36, 38, 40, 42, 44 or 46 inches.
 41N 6825F—Tan 41N 6826F—Charcoal gray
 Shipping weight 3 pounds 8 ounces.....\$25.00

Tall sizes for men 6 feet and over.
 State chest size 38, 40, 42, 44 or 46 inches.
 41N 6828F—Tan 41N 6829F—Charcoal gray
 Shipping weight 3 pounds 10 ounces.....\$26.50

3 Country coat. Slash, upper pockets, flap lower.

State chest size 36, 38, 40, 42, 44 or 46 inches.
 41N 4944F—Charcoal gray 41N 4943F—Tan
 Shipping weight 4 pounds 8 ounces.....\$29.50

Tall sizes for men 6 feet and over.
 State chest 38, 40, 42, 44 or 46 inches.
 41N 4954F—Charcoal gray 41N 4953F—Tan
 Shipping weight 5 pounds.....\$31.00

Seals out wind, repels rain . . Dacron-Cotton Poplin

All 3 cold-proofed with linings of Acrilan pile in the body, ALPACA pile, (cotton back) in collar and zip-off hood

ALL 3 STYLES
 ALSO IN
 TALL SIZES





Oakbrook Jackets

Just the jacket he wants . . .
 2-ply nylon for good looks and long wear
plus warmth-holding lining

\$17.00
 Reg. sizes

Light in weight, heavy on warmth because of thick 100% Acrilan® acrylic pile lining. Sleeves are non-binding for comfort in action . . . lined with nylon taffeta quilted to thick, bonded polyester fiber.

Two-ply nylon (2 strands twisted into one stronger, longer wearing strand) has a water-repellent finish. Hand wash, drip dry.

Drawstring hood has a button flap, too. And it's concealed by the collar. Notice the nylon zipper in the picture below. That's where the hood hides out.

Regular sizes: Men 5 feet 7 inches to 5 feet 11½ inches.

Please state chest size 36, 38, 40, 42, 44 or 46 inches.

- 41 N 4562F—Red
- 41 N 4561F—Green
- 41 N 4563F—Burgundy
- 41 N 4557F—Taupe
- 41 N 4560F—Black
- 41 N 4559F—Gray
- 41 N 4558F—Navy

Shpg. wt. 2 lbs. 3 oz. \$17.00

Tall sizes: Men 6 ft. to 6 ft. 3½ in.

Please state chest size 38, 40, 42, 44 or 46 inches.

- 41 N 4571F—Red
- 41 N 4570F—Green
- 41 N 4572F—Burgundy
- 41 N 4566F—Taupe
- 41 N 4569F—Black
- 41 N 4568F—Gray
- 41 N 4567F—Navy

Shpg. wt. 2 lbs. 5 oz. \$19.00



Treat him to the luxurious softness of *GLOVE*





1 \$4⁷⁷



2 \$3⁷⁷

men's and boys' sizes

4 \$3⁷⁷

men's and boys' sizes

3 \$3⁷⁷



5 \$5⁷⁷



6 \$5⁹⁷

7 \$6⁹⁷

8 \$6⁷⁷

9 \$2⁸⁷

men's and boys' sizes

Cozily lined for fireside warmth

1 Acrilan® acrylic pile lining with flexible elk-tanned cowhide vamp, imitation leather back. Neat moc-toe design. Searofoam sole, heel.

Sizes D (medium) 6, 7, 8, 9, 10, 11. State size.

67 N 92660F—Brown 67 N 92661F—Black
Shipping weight 1 pound 8 ounces.....\$4.77

2 Soft cotton flannel lining topped with natural shearling lamb collar. Brown, smooth split-leather upper. Searofoam sole and wedge heel.

Sizes D (medium) 7, 8, 9, 10, 11, 12. State size.

67 N 92775F—Shpg. wt. 1 lb. 8 oz.....\$3.77

Sizes Boys' D (medium) 2, 3, 4, 5, 6. State size.
67 N 65775F—Shpg. wt. 1 lb. 8 oz.....\$3.77

3 Tan glove leather uppers lined with fluffy acrylic pile. Split-leather sole, wedge heel.

Sizes D (medium) in 7, 8, 9, 10, 11. State size.

67 N 92750F—Shpg. wt. 1 lb. 8 oz.....\$3.77

4 Warm Acrilan acrylic lining, smooth split-leather upper. Searofoam sole, heel.

Sizes D (medium) 7, 8, 9, 10, 11, 12, 13. State size.

67 N 92740F—Brown 67 N 92741F—Black
Shipping weight 1 pound 8 ounces.....\$3.77

Sizes Boys' D (medium) 1, 2, 3, 4, 5, 6. Brown.
67 N 65740F—State size. Shpg. wt. 1 lb. 4 oz.\$3.77

5 Foot-pampering nylon fleece lining in genuine moccasin of glove leather with mellow wax finish. Hand laced. Brown.

Sizes D (medium) 6, 7, 8, 9, 10, 11, 12. State size.

67 N 92630F—Shpg. wt. 1 lb. 8 oz.....\$5.77

6 Supple glove leather upper, elastic ring goes at sides for sure fit. Red acrylic pile lining. Cushiony Searofoam sole and heel. Smoke brown.

Sizes D (medium) 7, 8, 9, 10, 11, 12. State size.

67 N 92430F—Shpg. wt. 1 lb. 8 oz.....\$5.97

7 Ankle-deep warmth . . zipper boot is fully acrylic pile lined, has spice-tan glove leather upper. Buoyant Searofoam sole and heel.

Sizes D (medium) 7, 8, 9, 10, 11, 12. State size.

67 N 92415F—Shpg. wt. 1 lb. 10 oz.....\$6.97

8 Spice-tan glove leather upper with hand-laced matching sole teams with acrylic pile lining to keep him perfectly at ease.

Sizes D (medium) 6, 7, 8, 9, 10, 11, 12. State size.

67 N 92486F—Shpg. wt. 1 lb. 8 oz.....\$6.77

9 Generous cuff of Orlon® acrylic atop imitation leather upper, plus nylon fleece lining. Padded imitation leather sole. Spice tan.

Sizes D (medium) 6, 7, 8, 9, 10, 11, 12. State size.

67 N 92800F—Shpg. wt. 1 lb. 8 oz.....\$2.87

Sizes Boys' D (medium) 1, 2, 3, 4, 5. State size.

67 N 65800F—Shpg. wt. 1 lb. 6 oz.....\$2.87

*Registered DuPont trademark



1 \$6.97

"Upholstered" comfort
.. lining of soft foam
bonded to nylon

Styles (1) through (3) have a cushiony foam lining with thousands of tiny holes that let air surge around his foot.

1 The romeo, superbly comfortable. Glove leather uppers, cushioned insole. Foam lined front with glove leather lined tongue and backpart. Leather sole, rubber heel.
 Sizes C (medium narrow) 7 to 12. Half sizes, no 11 1/2.
 E (medium wide) 7 to 14. Half sizes, no 12 1/2, 13 1/2.
 EEE (very wide) 7 to 12. Half sizes, except 11 1/2.
 67 N 91624F—Brown 67 N 91625F—Black
 State size, then width. Shpg. wt. 1 lb. 8 oz.\$6.97

2 Casually inclined with moc style uppers of butter-soft glove leather. Full foam lining. Searofoam sole, heel.
 Sizes D (medium) 7 to 13. Half sizes, no 11 1/2 or 12 1/2.
 67 N 92170F—Chestnut brown 67 N 92171F—Black
 Please state size. Shipping weight 1 lb. 8 oz.\$5.97

3 The classic opera, a favorite, with fine quality glove leather uppers. Full foam lining. Searofoam sole, heel.
 Sizes D (medium) 7 to 13. Half sizes, no 11 1/2 or 12 1/2.
 67 N 92175F—Chestnut brown 67 N 92176F—Black
 Please state size. Shipping weight 1 lb. 8 oz.\$5.97



Creamy soft Deerskin

4 Extremely flexible uppers of genuine deerskin with these added touches of luxury: fully cushioned insole, warm nylon fleece lining. Back pull-tab. Slashed leather trim at topline. Searofoam sole and heel. Brown.
 Sizes D (medium) 7, 8, 9, 10, 11, 12. State size.
 67 N 92990F—Shipping weight 1 lb. 8 oz.\$9.77



5 Styled in a casual manner with uppers of extra soft deerskin. Relaxing cushioned insole, glove leather lining for greater comfort. Pull tab, slashed leather at topline. Bouncy Searofoam sole and heel.
 Sizes D (medium) 7 to 13. Half sizes, no 11 1/2 or 12 1/2.
 67 N 92973F—Brown 67 N 92974F—Black
 67 N 92972F—Natural tan
 Please state size. Shipping weight 1 lb. 8 oz.\$9.77

Popular Corduroy

6 Cotton corduroy in a plaid design with elastic side gores. Vulcanized rubber platform. Flexible split-leather sole and wedge heel.
 Sizes D (medium) 7 to 12. Half sizes, no 11 1/2. State size.
 67 N 91280F—Blue and black
 67 N 91281F—Red and black
 67 N 91282F—Brown and black
 Shipping weight 1 pound 8 ounces.\$2.84



7 Cotton corduroy, side gores for snug fit. Vulcanized rubber platform. Split leather sole.
 Sizes D (medium) 7 to 12. Half sizes, no 11 1/2. State size.
 67 N 91251F—Tan 67 N 91252F—Black
 67 N 91253F—Gray
 Shipping weight 1 pound 8 ounces.\$2.84



FOR
BACKYARD
BUCKEROOS

1 \$574

2 ^{Child's} \$574 ^{Big boys'} \$774

3 Save \$1
Now \$3.97
only

1 Inspired by the old west to delight your little cowboy as he rides the range. Boot has white underlay design on its sturdy split-leather upper. Medium toe, crimped vamp, reinforced back. Legs are lined for soft comfort. Pull straps for easy on and off. Rubber sole and low heel take a child's rugged wear in stride.

Sizes D (medium wide) 8½ to 3. Half sizes too.
15 N 15758F—Tan with brown
15 N 15752F—Black
State size. Shipping weight 1 lb. 10 oz. . . \$5.74

2 Split-leather upper with inlaid tulip design. Medium toe, crimped vamp, reinforced back. Lined leg. Rubber sole, western heel.

Sizes Child's D (med. wide) 8½ to 3. Half sizes too.
15 N 15740F—Black smooth
15 N 15754F—Tan with brown smooth
15 N 15755F—Tan brushed
State size. Shpg. wt. 1 lb. 10 oz. \$5.74
Sizes Big boys' D (medium wide) 3½ to 6. Half sizes. State size. Black smooth only.
D67 N 64850F—Shipping weight 3 lbs. . . \$7.74

3 Sure to thrill the smallest broncobuster. An exciting roping scene, a sheriff's star and a ranch-brand border—all on a sturdy split-leather upper, nylon sewn for added strength. Roomy rounded toe, pull-on straps. Durable rubber sole and heel.

Sizes D (medium wide) 8½ to 3. Half sizes too.
15 N 15804F—Black
15 N 15802F—Tan with brown
15 N 15815F—Red
State size. Shpg. wt. 1 lb. 10 oz. Were \$4.97 . . \$3.97



4 ^{Men's} \$12.97
^{Boys'} \$9.97

5 ^{Men's} \$11.97

LEISURE BOOTS
for
Men and Big Boys

4 Ranch boot, 8 inches high. Black leather uppers, leather lined leg. Arch-supporting pegged cottage shank. Leather pull straps. Leather sole, rubber heel. Sizes Men's D (medium) 7½ to 12. Half sizes, no 11½. State size.
67 N 74835F—Wt. 3 lbs. 10 oz. \$12.97

Boys' as men's, but durable composition sole, legs unlined.
Sizes D (medium) width in 3½ to 7. Half sizes. State size.
67 N 64503F—Shpg. wt. 3 lbs. . . \$9.97

5 High-shining elk-tanned cowhide uppers are fully nylon fleece lined to keep him at ease in soft warmth. Pull strap. Rubber sole, heel. 8 inches high. Black. Sizes Men's D (medium) width in 7½ to 12. Half sizes, except no 11½. State size.
67 N 74865F—Shpg. wt. 3 lbs. . \$11.97



1 \$8⁹⁷

2 \$6⁹⁷

3 \$7⁹⁷

New deeply cushioned insoles add foot-pampering ease to these warmly lined Boots

A to EE widths . . sizes 5 to 11

Check listings for sizes and widths available

1 High and handsome . . black glove leather upper with cloud-soft Dynel® modacrylic cuff can be worn high or folded down. Acrilan® acrylic pile lining. Comfortably cushioned insole. Ribbed Searofoam sole and heel.

Sizes A (medium narrow) width in 6, 6½, 7, 7½, 8, 8½, 9, 9½, 10 and 11.
C (medium wide) width in 5, 5½, 6, 6½, 7, 7½, 8, 8½, 9, 9½, 10 and 11.
EE (extra wide) width in 5, 5½, 6, 6½, 7, 7½, 8, 8½, 9, 9½, 10 and 11.
15 N 19166F—State size, then width. Shipping weight 2 lbs. \$8.97

2 Soft glove leather upper with convenient side snap. Acrilan acrylic pile lining. Comfortably cushioned insole. Ribbed Searofoam sole and heel.

Sizes A (medium narrow) width in 6, 6½, 7, 7½, 8, 8½, 9, 9½, 10 and 11.
C (medium wide) width in 5, 5½, 6, 6½, 7, 7½, 8, 8½, 9, 9½, 10 and 11.
EE (extra wide) width in 5, 5½, 6, 6½, 7, 7½, 8, 8½, 9, 9½, 10 and 11.
15 N 19720F—Brass color waxed finish
15 N 19254F—Black
Please state size, then width. Shipping weight 2 pounds. \$6.97

3 Black glove leather upper with Dynel modacrylic cuff. Acrylic pile lining. Cushioned insole. 1-inch stacked heel. Ribbed composition sole.

Sizes C (medium wide) width in 5, 5½, 6, 6½, 7, 7½, 8, 8½, 9, 9½, 10 and 11.
15 N 19202F—Please state size. Shipping weight 2 pounds. \$7.97

All boots on this page to be worn directly over the foot
Order boots same size as regular shoe size

Choose from
mellow waxed
finish or soft
glove leather

\$9⁷⁷



Deep double cuff of Dynel modacrylic . . wear it high or folded down. Warm Acrilan acrylic lining. Ribbed Searofoam sole, heel.

Sizes A (medium narrow) width 6, 6½, 7, 7½, 8, 8½, 9, 9½, 10.
C (med. wide) 4½, 5, 5½, 6, 6½, 7, 7½, 8, 8½, 9, 9½, 10, 11, 12.

15 N 19710F—Brass color waxed leather upper
15 N 19165F—Black glove leather upper
15 N 19700F—Otter (taupe) glove leather upper
State size, then width. Shipping weight 2 lbs. 4 oz. \$9.77

Three Heights of Fashion

Warmly lined Boots
. . waterproof, too



4 \$6⁹⁷

5 \$7⁹⁷

6 \$5⁹⁷

Waterproof polyvinyl outers patterned to look like leather . . wipe clean with damp cloth, will not salt stain. Warm Acrilan acrylic pile lining. Ribbed polyvinyl chloride sole, heel. Black.

Sizes medium width 5, 6, 7, 8, 9, 10. Half sizes, order half size larger. Please state size.

(4) 15 N 19256F—12-inch boot. Shipping wt. 2 lbs. 10 oz. \$6.97
(5) 15 N 19231F—15-inch boot. Shipping wt. 2 lbs. 12 oz. 7.97
(6) 15 N 19270F—10-inch boot. Shipping wt. 2 lbs. 8 oz. 5.97



A foot-soothing feeling
with heel-to-toe cushioning..

33 sizes

to fit almost every foot

\$4⁷⁷
pair

Foot-caressing uppers of soft flexible leather. Ideal for your leisure hours around the house . . . so comfortable you won't want to take them off. Permanently-pleated vamp. Fully cushioned heel to toe—for the fashion-minded woman who wants built-in comfort. Such a wide range of sizes you'll surely find one to fit. Split leather sole, flat wedge heel.

Sizes AA (narrow) width in 6½ to 10 and 11.
B (medium) width in 5 to 10, 11 and 12.
E (very wide) width in 5 to 10.
Half sizes, no 10½, 11½. *State size, then width.*
15 N 52753F—Bone
15 N 52752F—Light blue
15 N 52754F—Black
Shipping weight 1 pound \$4.77

1 Soft glove leather upper lined with thick Orlon* acrylic pile. Searofoam sole, wedge heel.

Sizes B (medium) 5 to 10 and 11. Half sizes, no 10½.
E (very wide) 6 to 9 and 10. Half sizes, no 9½.
15 N 53682F—Light blue with white lining
15 N 53683F—Red with white lining
15 N 53684F—Bone with red lining
15 N 53685F—Black with red lining
State size, then width. Shpg. wt. 1 lb. \$4.77

2 Shirred vamp on leather upper. Searofoam sole, wedge heel.

Sizes B (medium) 5 to 9, 10 and 11.
E (very wide) 5 to 9.
Half sizes, no 9½, 10½.
State size, then width.
15 N 52773F—Black
15 N 52771F—Bone
15 N 52774F—Black with red vamp
15 N 52770F—Light blue
Wt. 1 lb. 2 oz. . . . \$2.84

3 Relax in scuff with a soft leather upper and insole lining. Composition sole, wedge heel.

Sizes C (medium wide) 5 to 10 and 11.
E (very wide) 5 to 9 and 10.
Half sizes too. *State size, then width.*
15 N 53116F—Light blue
15 N 53117F—White
15 N 53118F—Black
Shpg. wt. 1 lb. . . . \$2.87

4 Imitation leather with fluffy Orlon* acrylic pile collar and cotton flannel lining. Padded sole.

Sizes C (medium wide) 4 to 9. No half sizes. *State size.*
15 N 53645F—Tan 15 N 53644F—Light blue
15 N 53646F—Black with red
Shipping weight 1 pound \$2.87

5 Imitation leather upper, colorful beads. Fur collar; padded sole.

Sizes C (med. wide) 4 to 9. No half sizes. *State size.*
15 N 53414F—Red
15 N 53411F—Pink
15 N 53413F—Light blue
15 N 53412F—Orchid
15 N 53410F—White
Shpg. wt. 1 lb. . . . \$1.87

6 Fluffy acrylic collar cuddles next to your foot for fireside warmth. Imitation leather upper, softly padded sole.

Sizes B (med.) 5 to 9. No half sizes. *State size.*
15 N 53690F—Blue
15 N 53691F—Black with red
Shpg. wt. 1 lb. . . . \$1.87

7 A quilted rayon satin beauty with a shiny bow. Hidden stretch gore. Searofoam sole.

Sizes B (med.) 5 to 10. No half sizes. *State size.*
15 N 52287F—Light blue
15 N 52288F—Black
Shpg. wt. 1 lb. . . . \$1.87

8 A shaggy scuff of acrylic and modacrylic fiber pile. Fully cushioned. Imitation leather sole.

Sizes B (med.) 5 to 10. No half sizes. *State size.*
15 N 54296F—Rose pink
15 N 54295F—Light blue
Shpg. wt. 1 lb. . . . \$1.87

9 A prize catch . . . a slip-on with exciting upper of jungle-printed cotton corduroy. Foam inner lining, absorbent terry cloth lining. Searofoam sole.

Sizes C (medium wide) in 5 to 11. No half sizes. *State size.* Shpg. wt. 1 lb.
15 N 52135F . . . \$1.87

10 A shaggy blend of acrylic and modacrylic fibers. Padded imitation leather sole.

Sizes C (med. wide) 5 to 10. No half sizes. *State size.*
15 N 54270F—Med. blue
15 N 54271F—Pink
15 N 54273F—Black
15 N 54274F—Lilac
15 N 54272F—Red
Shpg. wt. 1 lb. . . . \$2.84

11 Exciting brown and white jungle-print bootee to wear indoors or out. Styled of soft rayon plush, it's fashion-conscious for lounging and stretch pants, too. Searofoam sole, wedge heel.

Sizes C (medium wide) 5 to 10. No half sizes. *Please state size.*
Shpg. wt. 1 lb.
15 N 54265F . . . \$2.84

12 Fluffy, thick fur collar. Padded sole.

Sizes C (med. wide) 5 to 9. No half sizes. *State size.*
15 N 53303F—Red cotton corduroy
15 N 53301F—Light blue cotton corduroy
15 N 53304F—Black cotton corduroy
15 N 53300F—Gold-color metallic fabric with black collar
Shpg. wt. 1 lb. . . . \$2.84

13 A glamorous lounging bootee. Leather upper, acrylic pile lining. Guardtex composition sole.

Sizes B (medium) 5 to 10. No half sizes. *State size.*
15 N 54736F—Gold color 15 N 54737F—Black
Shipping weight 1 pound \$5.74



Leisure loving Slippers





1



2



3

Lovely quilted cotton batiste dusters . . . all with soft cotton filling, two side seam pockets. Machine washable, separately, warm temperature.

1 Multicolored stripe print. Bermuda collar. Misses' and Junior sizes 7, 8, 9, 10, 11, 12, 13, 14, 15, 16, 18. *State size.*
38 N 9614F—Pink multicolor
38 N 9615F—Blue multicolor
Wt. 2 lbs. 2 oz. . . . \$7.74

2 Brightly dotted A-line with collar, bow at neck. Misses' and Junior sizes 7, 8, 9, 10, 11, 12, 13, 14, 15, 16, 18. *State size.*
38 N 9627F—Blue
38 N 9628F—Red
Wt. 2 lbs. 3 oz. . . . \$7.74

3 Red-and-blue floral print Empire style. Eyelet trim, front zipper. Misses' and Junior sizes 7, 8, 9, 10, 11, 12, 13, 14, 15, 16, 18. *State size.*
Shipping wt. 1 lb. 12 oz.
38 N 9565F. . . . \$7.74



*So delightfully pretty
in quilted cotton batiste*

The look . . . elegant and ultra feminine. Softly gathered at neckline, ruffled in lasting cotton lace down long button front. Wear robe loose and flowing or with rope-style self-fabric belt.

Smooth batiste outside and lining quilted to fluffy polyester filling for lightweight warmth. 2 side seam pockets. Machine wash, warm temp.

Misses' and Junior sizes 9, 10, 11, 12, 13, 14, 15, 16, 18. *State size.*

38 N 9629F—Pink 38 N 9630F—Blue
Shipping weight 2 lbs. 9 oz. . . . \$9.77







Lustrous and Festive Two-piece Ensemble

1 Knit separates of Antron® nylon have a shimmering boucle-texture... a lovely look for the holidays. Double-breasted jacket is cut with relaxed lines, trimmed with gold-color metal buttons. Slim skirt has an elasticized waist. Hand wash.

Misses' sizes 10, 12, 14, 16, 18. State size. Use measurement chart on page 604.

V7 N 9353F—Bright pink

V7 N 9354F—Winter white

V7 N 9355F—Light blue

Shipping weight 2 pounds.....\$16.97

Soft Wool Cardigan Warm as the Hearthside

2 A beautiful classic with cable pattern in front; a comfortable full-fashioned knit with better-fitting raglan sleeves. Rib-knit trim. Imported from the British Crown Colony of Hong Kong. Hand wash.

Sizes 34, 36, 38, 40, 42. State size. Use measurement chart on page 602.

V7 N 9349F—White

V7 N 9350F—Light blue

V7 N 9351F—Beige

Shipping weight 1 pound 1 ounce..\$8.97



"Charge It" if you wish . . . see page 353



1



2



3



MOHAIR
ADDS THE
FROTHY
LOOK

1 A marvelously nonchalant cardigan sweater knit of wool, mohair and nylon. A bubble-stitch pattern adds front interest. Dry clean.

Sizes 34, 36, 38, 40, 42. State size.

V7 N 9340F—Light pink

V7 N 9341F—White

V7 N 9342F—Light blue

Shipping weight 1 pound 3 ounces . . \$9.97

2 Soft, loopy-textured white cardigan knit of mohair and wool. A pretty accent: sprays of flowers embroidered in mohair . . lively shades of aqua blue, pink and green. Dry clean.

Sizes 34, 36, 38, 40, 42, 44, 46.

Please state size. Shipping weight 12 oz.

V7 N 9347F \$9.97

3 Fashion tones in a wide stripe and in a triangular-shaped pattern decorate this turtleneck pullover. Knit of wool, mohair and nylon. Dry clean.

Sizes 34, 36, 38, 40, 42. State size.

V7 N 9344F—Dark green, aqua and white

V7 N 9345F—Med. brown, beige and pink

Shipping weight 1 pound 3 ounces \$12.97

MEASUREMENT CHART FOR SWEATERS

Order only sizes listed for each catalog number

Size is . . .	34	36	38	40	42	44	46
if bust is	31-32	33-34	35-36	37-38	39-40	41-42	43-44 in.

If measurements fall between 2 sizes,
order the larger size



WHITE LACE AND
BLACK VELVETEEN

f



- 1 Lace Shirt. Bodice lined with broadcloth. All cotton. Long sleeves. Dry clean. Misses' sizes 10, 12, 14, 16, 18. State size. V7 N 6303F—Shipping weight 10 ounces. . \$7.97
- 2 Velveteen Pants. Back zipper. Cotton. Dry clean. Misses' sizes 10, 12, 14, 16, 18. State size. V7 N 782F—Shipping weight 1 pound. . . \$6.97
- 3 Lace Pants lined with broadcloth; all cotton. Snagproof side zipper. Dry clean. Misses' sizes 10, 12, 14, 16, 18. State size. V7 N 6304F—Shipping weight 9 ounces. . . \$6.97
- 4 Lace Overblouse. Bodice lined in broadcloth. All cotton. Back buttons. Dry clean. Misses' sizes 10, 12, 14, 16, 18. State size. V7 N 6301F—Shipping weight 8 ounces. . . \$6.97
- 5 Lace Skirt lined with broadcloth; all cotton. Snagproof side zipper. Dry clean. Misses' sizes 10, 12, 14, 16, 18. State size. V7 N 6302F—Shipping weight 9 ounces. . . \$5.97



- 6 Velveteen Jacket. Double-breasted; sham pearl buttons. 2 real, 2 mock pockets. Cotton. Dry clean. State Misses' sizes 10, 12, 14, 16, 18. V7 N 6299F—Shipping weight 1 pound. . \$13.97
- 7 Velveteen Skirt. Side zipper. Cotton. Dry clean. State Misses' sizes 10, 12, 14, 16, 18. V7 N 6298F—Shipping weight 9 ounces. . . \$6.97
- 8 Acetate Slipper Satin Blouse. Button-front; ascot tie; sham pearl buttons. Dry clean. Misses' sizes 10, 12, 14, 16, 18. State size. V7 N 6300F—Shipping weight 9 ounces. . . \$5.97

MEASURE . . see measurement chart on page 604

Just call Sears and say
"Charge it". . see page 353



PROPORTIONED VERTICAL STRETCH PANTS

TINY . . .
fits figures 5 ft. 2 in. and under
TYPICAL . . .
fits figures 5 ft. 3 in. to 5 ft. 6 in.
TALL . . .
fits figures 5 ft. 7 in. and over

1 Royal Adagio® by Milliken . . . a fabric of viscose rayon and stretch nylon that "gives" gracefully, fits to perfection and feels like suede. Contour-style stirrups. Side Zephyr® zipper. Dry clean.

TINY. Misses' sizes 8, 10, 12, 14, 16.
V7 N 516F—White V7 N 515F—Blue
V7 N 514F—Pink V7 N 517F—Black
State size. Shipping weight 1 lb. . . \$8.90

TYPICAL. Misses' sizes 8, 10, 12, 14, 16, 18.
V7 N 520F—White V7 N 519F—Blue
V7 N 518F—Pink V7 N 521F—Black
State size. Shipping weight 1 lb. . . \$8.90

TALL. Misses' sizes 10, 12, 14, 16, 18.
V7 N 524F—White V7 N 523F—Blue
V7 N 522F—Pink V7 N 525F—Black
State size. Shipping weight 1 lb. . . \$8.90

SKI JACKET

2 Flowered cotton poplin print reverses to white nylon taffeta quilted to Dacron® polyester. Hood zips into neckline. Two pockets on poplin side, one on taffeta side. Water repellent. Machine wash, medium setting.

Misses' sizes S(8-10); M(12-14); L(16-18). State size letter S, M or L.
V7 N 1372F—Shpg. wt. 1 lb. 3 oz. \$14.90

SMOOTH-FITTING TWO-WAY STRETCH PANTS

3 Streamlined comfort, horizontally and vertically, in nylon knit. No zipper. Pull-on style with elasticized waist. Machine washable, medium setting.

Juniors' and Misses' sizes 7-8, 9-10, 11-12, 13-14, 15-16. Please state size.
V7 N 841F—Blue V7 N 842F—Black
Shipping weight 1 pound. \$6.97

RUFFLED SHIRT

4 Supima® combed cotton broadcloth shirt. Mandarin neck; roll sleeves. Machine washable, medium setting.

Misses' sizes 8, 10, 12, 14, 16, 18.
7 N 4030F—White
7 N 4029F—Medium blue
State size. Shipping weight 8 oz. . . \$2.97

MISSES' MEASUREMENT CHART

Order only sizes listed for each catalog number
Size is . . . 8 10 12 14 16 18 20
if bust is . . . 31 32½ 34 35½ 37 39 41 in.
if waist is . . . 23½ 24½ 25½ 27 28½ 30½ 32½ in.
if hips are . . . 32½ 34 36 38 40 42 44 in.
If measurements fall between 2 sizes,
order the larger size



1



2

**THE SOFT LOOK
OF DACRON® CREPE**

Softly flowing, softly textured crepe shirts of 100% Dacron polyester. So wrinkle-resistant you could pack them in a handbag. Both styles wash with ease, dry quickly and smoothly. Hand wash, or machine wash at warm temp setting. Do not wring or twist . . . drip dry. Little or no ironing necessary.

1 The dreamy look . . . a frankly feminine shirt striped in yellow, pink, light blue, light green and pale orange. Classic collar, button-cuffed sleeves. A pleasure to wear either in or out.
Misses' sizes 10, 12, 14, 16, 18.
State size. Shipping weight 8 oz.
 7 N 4004F \$5.70

2 The dandy look . . . shirt of Whipped Cream® fabric. Pleated front, classic collar, button cuffs. Wear it in or out.
Misses' sizes 10, 12, 14, 16, 18.
Please be sure to state correct size.
 7 N 4006F—Light blue
 7 N 4007F—Light pink
 7 N 4005F—White
 Shipping weight 8 ounces \$5.70





1 Bleached-white Raccoon collar with brown-dyed tips, spectacular topping for this snappy wool melton-cloth car coat (about 32 inches long). A brisk outdoor look lined in warm acrylic pile on cotton back. Sleeves are lined in acetate quilted to acrylic.

Juniors and Misses. Sizes 7-8, 9-10, 11-12, 13-14, 15-16, 17-18. Please state correct size.
 N17 N 6260F—White with red pile
 N17 N 6261F—Bright red with white pile
 Shipping weight 4 pounds 5 ounces...\$29.90

2 Tailored Raincoat. Its young shape defined by seaming, brightened with metal buttons. Deeply-ribbed rayon-and-acetate twill, foam-laminated and water-repellent. Fully lined. Umbrella shown is not included.

Juniors and Misses. Sizes 7-8, 9-10, 11-12, 13-14, 15-16, 17-18. Please state correct size.

With Zip-liner. Warm, gold-color acrylic pile on cotton back; sleeves of quilted acetate.

N17 N 9095F—White
 N17 N 9096F—Black
 Shipping weight 4 pounds 14 ounces...\$29.90

Without Zip-liner. Shipping weight 3 lbs. 14 oz.
 N17 N 9195F—White.....\$23.90
 N17 N 9196F—Black..... 23.90

3 Reversible Raincape... a dashing look for the new season. It's aqua blue; turn it inside out and it's dark navy blue. Both sides of sturdy, water-repellent rayon-and-cotton twill accented with big wooden buttons.

Misses' sizes S (8-10); M (12-14); L (16-18). Please state correct size letter S, M or L.

N17 N 9090F—Shpg. wt. 3 lbs. 8 oz...\$18.90

4 Car coat, toasty warm and ready for winter. Acrylic pile on cotton back, fully lined in acetate quilted to acrylic. A hood for cuddling. Sporty zippered pockets and plastic tie belt. About 37 inches long.

Juniors and Misses. Sizes 7-8, 9-10, 11-12, 13-14, 15-16, 17-18. Please state correct size.

N17 N 8111F—Red
 N17 N 8114F—White
 Shipping weight 4 pounds 8 ounces...\$24.90



1 Three-piece Ensemble in a loopy-textured blend of 97% wool and 3% other fiber. The coat: young and subtly shaped by welt stitching in the front. Milium insulated acetate taffeta lining. The skirt: seat lined and side-zippered. The blouse: sleeveless, back-zippered and lined.

Misses' sizes 8, 10, 12, 14, 16, 18.

Please be sure to state correct size.

N17 N 3945F—Pale green

N17 N 3946F—White

Shipping weight 4 pounds 11 ounces... \$39.90



2 Jet-black Hooded Coat... a dramatic sweep of luxurious rayon velvet. Its one detail, a handsome button of rayon satin. Snap closing. Milium-insulated acetate satin lining.

Misses' sizes 6, 8, 10, 12, 14, 16.

Please be sure to state correct size.

Shipping weight 4 pounds

N17 N 4510F..... \$34.90

3 Green Winter-Tweed Coat, flecked with a rich interplay of forest tones, here in a soft blend of 80% wool, 13% nylon and 7% cotton. Easily shaped, smartly punctuated with double buttons. Milium-insulated acetate satin lining.

Misses' sizes 8, 10, 12, 14, 16, 18.

Please state size. Shpg. wt. 4 lbs. 7 oz.

N17 N 4505F..... \$29.90



MEASURE AND BE SURE

... measuring information and charts on page 358





THE HOLIDAY LOOK
takes many directions

at just \$800



SHOWN ON OPPOSITE PAGE

Darkling prints of crepe-textured Dacron® polyester and cotton. Hand wash alone

1 Sweetly collared step-in dress with an all-around cluster-pleated skirt.
Misses' sizes 12, 14, 16, 18, 20.
Shorter Women's sizes 14½, 16½, 18½, 20½, 22½, 24½. State correct size.
V31 N 3317F—Olive green, cherry red, maple tan and gray print
V31 N 3318F—Medium and dark blue, lavender and jade green print
Shipping weight 12 ounces. . . . \$8.00

2 Bow-trimmed overblouse dress. Button-back top. Side-zippered skirt.
Misses' sizes 10, 12, 14, 16, 18.
Shorter Women's sizes 12½, 14½, 16½, 18½, 20½, 22½. State correct size.
V31 N 3315F—Jade green, cherry red, olive green, lavender and beige print
V31 N 3316F—Medium blue, maple tan, mint green and olive green print
Shipping weight 11 ounces. . . . \$8.00

Lustrous poplins of Fortrel** polyester and Avril® rayon
Machine washable, medium

3 Jaunty overblouse dress. Top has slip-through kerchief of blue-and-green printed acetate jersey, placket-effect trim, side slits, back-neck zipper. Side-zippered skirt; back kick pleat.
Misses' sizes 10, 12, 14, 16, 18.
Shorter Women's sizes 12½, 14½, 16½, 18½, 20½, 22½. State correct size.
V31 N 3319F—Loden green
V31 N 3320F—Black
Shipping weight 1 lb. 1 oz. . . . \$8.00

4 Shirtwaist dress with a placketed step-in front. Skirt has side pocket and back kick pleat. Elasticized belt.
Misses' sizes 12, 14, 16, 18, 20.
Shorter Women's sizes 14½, 16½, 18½, 20½, 22½, 24½. State correct size.
V31 N 3321F—Cranberry red
V31 N 3322F—Dark teal blue
Shipping weight 1 pound. . . . \$8.00

Wintry whites in a softly textured fabric of wool and nylon. Dry clean

5 Raglan-sleeve shirtwaist dress brightened by brass-colored buttons on the placketed step-in front.
Misses' sizes 10, 12, 14, 16, 18.
V31 N 3339F—White
V31 N 3340F—Medium blue
State size. Shpg. wt. 1 lb. 2 oz. . . \$8.00

6 Gentle sheath defined with welt seaming. Shirred at the waist in front. Back zipper. Pin not included.
Misses' sizes 10, 12, 14, 16, 18.
V31 N 3337F—White
V31 N 3338F—Black
State size. Shipping wt. 1 lb. . . \$8.00

MEASURE . . see page 358 for charts

*Reg. T.M. DuPont
**Reg. T.M. Celanese Fiber Co.



Festive brocades of flower-patterned acetate. Dry clean

7 Tie-collared 2-piece dress. Jacket has self buttons (extra button incl.). Back-zipped skirt.
Misses' sizes 10, 12, 14, 16, 18.
Shorter Women's sizes 12½, 14½, 16½, 18½, 20½, 22½.
V31 N 3272F—Green and blue
V31 N 3273F—Bright red
State size. Shpg. wt. 15 oz. . \$8.00

8 Svelte sheath with dainty bows marking the waistline. Back zipper opening and kick pleat.
Misses' sizes 12, 14, 16, 18, 20.
Shorter Women's sizes 14½, 16½, 18½, 20½, 22½, 24½.
V31 N 3270F—Pale blue
V31 N 3271F—Champagne beige
State size. Shpg. wt. 11 oz. . \$8.00



THE
SOPHISTICATED
KNITS



FASHIONS
 CUED TO
 BLACK AND WHITE



Black and white are paired strikingly in this one-piece dress with an "overblouse" effect. The Spanish influence is delightfully evident in the black cotton lace top with its ball-fringe trim. White skirt of lustrous rayon-and-silk. Dress is fully lined. Long back zipper. Dry clean.

Misses' sizes 10, 12, 14, 16, 18. *State size.*
 V31N6337F—Shipping weight 12 ounces. \$12.54

BE SURE TO MEASURE . . . see page 358

Shown on opposite page: our double-knits that light up the evening. Made of a soft, supple, shimmering and very flattering blend of Herculon® olefin, rayon and metallic.

1 The sheath . . . scoop-necked and long-sleeved, a radiant wand that lends its magic wherever you go. Acetate satin belt. Long back zipper closing. Dry clean.

Misses' sizes 10, 12, 14, 16, 18. *State correct size.*

N31 N 7860F—White with silver-color

N31 N 7861F—Light pastel green with silver-color

Shipping weight 1 pound 12 ounces \$19.00

2 Three-piece suit-dress brilliantly combines versatility with its air of late-day drama. Sleeveless pullover blouse has back-neck zipper. Slim skirt with elasticized waistband for good fit. Classic jacket has below-elbow-length sleeves. Dry clean.

Misses' sizes 12, 14, 16, 18, 20.

Shorter Women's sizes 14½, 16½, 18½, 20½, 22½, 24½.

N31 N 7898F—Black with bright blue

N31 N 7899F—Black with gold-color

State size. Shipping weight 2 pounds 4 ounces . . . \$21.00

*Herculon® registered trademark



PURE SILK

3 Two-piece suit-dress of rich, lustrous shantung . . . a gem for the holidays and a year-'round treasure. Jacket is beautifully detailed with pretty collar and scalloped sides. Skirt has a side zipper. Fully lined except sleeves. Dry clean. Pin is not included, but is sold below.

Misses' sizes 12, 14, 16, 18, 20.

Shorter Women's sizes 14½, 16½, 18½, 20½, 22½.

N31 N 7894F—Emerald green

N31 N 7895F—Bright blue

N31 N 7896F—Black N31 N 7897F—Red

State size. Shipping weight 1 pound 9 ounces . . . \$20.00

Abstract leaf pin of brush-finished gold electro-plated metal with simulated jade buds 2¼ inches long. Price includes 10% Federal Excise Tax.

4 N 3921E—Shipping weight 3 ounces \$5.45

MEASURE AND BE SURE . . . for charts, see page 358





 ANGEL
PINKS FOR
PARTYING

come at a small price \$5⁰⁰



Just say "Charge It" and pay later . . . see page 353

FORM
A2051G SEARS 623



THE INDISPENSABLE DRESS

now in your two favorite year 'round fabrics and in the right size for you:

• Petite Junior • Junior • Miss • Tall Miss • Shorter Woman

\$10⁰⁰



So well made it belies its low Sears price . . . self piping at neckline; triangular stitching above the inverted back kick pleat; skillfully seamed and dart-detailed; 3-inch taped hem; a non-snag nylon Zephyr® zipper in back.

So versatile it goes almost anywhere . . . comes with narrow gold-color belt and a self belt with fabric-covered rustproof buckle.

1 Orlon® acrylic and wool jersey in a superior 7-ounce weight. Carefully lined with acetate taffeta. Dry clean. Jewelry not included; pin is sold on page 619.

Petite Junior sizes 5P, 7P, 9P, 11P, 13P. State size.
V31 N 5588F—White V31 N 5587F—Black
V31 N 5598F—Royal blue V31 N 5589F—Red
Shipping weight 1 pound 1 ounce. \$10.00

Junior sizes 7, 9, 11, 13, 15. Please state correct size.
V31 N 5582F—White V31 N 5581F—Black
V31 N 5596F—Royal blue V31 N 5583F—Red
Shipping weight 1 pound 1 ounce. \$10.00

Misses' sizes 10, 12, 14, 16, 18, 20. Please state size.
V31 N 5576F—White V31 N 5575F—Black
V31 N 5594F—Royal blue V31 N 5577F—Red
Shipping weight 1 pound 1 ounce. \$10.00

Tall Misses' sizes 12T, 14T, 16T, 18T, 20T. State size.
V31 N 5585F—White V31 N 5584F—Black
V31 N 5597F—Royal blue V31 N 5586F—Red
Shipping weight 1 pound 1 ounce. \$10.00

Shorter Women's sizes 14½, 16½, 18½, 20½, 22½, 24½.
V31 N 5579F—White V31 N 5578F—Black
V31 N 5595F—Royal blue V31 N 5580F—Red
Shipping weight 1 pound 1 ounce. \$10.00



2 Acetate and rayon crepe bonded to an acetate tricot back. Rich in body and appearance, it drapes well . . . feels lingerie-soft to wear. Dry clean. Jewelry not included.

Petite Junior sizes 5P, 7P, 9P, 11P, 13P. State size.
V31 N 5312F—Black V31 N 5314F—Azure blue
V31 N 5313F—Oyster white
Shipping weight 1 pound 5 ounces. \$10.00

Junior sizes 7, 9, 11, 13, 15. Please state correct size.
V31 N 5306F—Black V31 N 5308F—Azure blue
V31 N 5307F—Oyster white
Shipping weight 1 pound 5 ounces. \$10.00

Misses' sizes 10, 12, 14, 16, 18, 20. Please state size.
V31 N 5300F—Black V31 N 5302F—Azure blue
V31 N 5301F—Oyster white
Shipping weight 1 pound 5 ounces. \$10.00

Tall Misses' sizes 12T, 14T, 16T, 18T, 20T. State size.
V31 N 5309F—Black V31 N 5311F—Azure blue
V31 N 5310F—Oyster white
Shipping weight 1 pound 5 ounces. \$10.00

Shorter Women's sizes 14½, 16½, 18½, 20½, 22½, 24½.
V31 N 5303F—Black V31 N 5305F—Azure blue
V31 N 5304F—Oyster white
Shipping weight 1 pound 5 ounces. \$10.00