

# Very Easy Vogue®

AMERICAN DESIGNER ORIGINAL

*Edith Head*



A



B

C

# fashion suits

**A** £59-99

**A** LINCROFT two-piece **SUIT** featuring one button fastening jacket with jetted side pockets and no vent. Trousers have pleated fronts and tapered legs to 16 in (41 cm) bottoms. Dry clean only. (Belt not supplied).  
Material: 67% Polyester, 33% Viscose  
Lining: Polyester. Colour: Silver Grey  
For sizes see Size Chart on opposite page

**CS 5283** £59-99, 20 weeks at £3-00,  
38 weeks at £1-60

**B** LINCROFT two-piece **SUIT** featuring loose fitting, single breasted, one button fastening jacket with jetted side pockets and no vent. Trousers have pleated fronts and tapered legs to 16 in (41 cm) bottoms. Dry clean only.

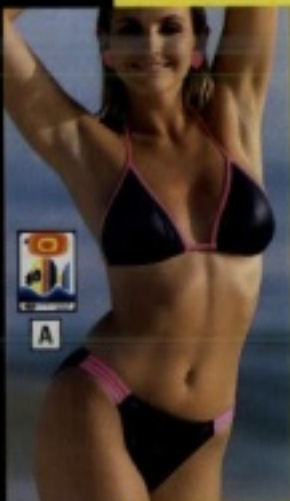
Material: 67% Polyester, 33% Viscose  
Lining: Polyester. Colour: Black/Blue slab  
For sizes see Size Chart on opposite page

**CM 5545** £69-99, 20 weeks at £3-50,  
38 weeks at £1-85

**LINCROFT**

**B** £69-99

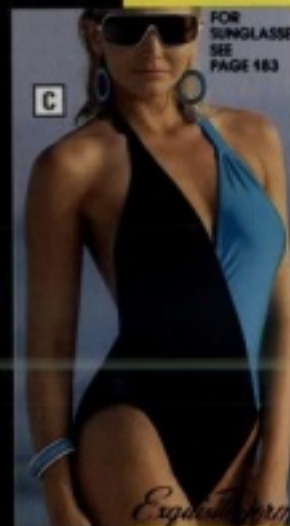




A



B



FOR  
SUNGLASSES  
SEE  
PAGE 183

C



ZIP AS  
LOW AS  
YOU DARE



D



E

**A** CURTAIN TOP BIKINI with tanga brief. Fibre: 80% nylon, elastane. Black-rose. DS 401 Bikini. Sizes 10, 12, 14. £11-99 20 wks 65p

**B** T-SHIRT with 'First Class' motif. Fibre: cotton. White. DS 008 T-shirt. Sizes SW, W. £5-99 20 wks 30p

**C** ONE-PIECE PLUNGE SWIMSUIT with halter-neck tie and low-cut back. Fibre: 80% nylon, elastane. Black. DS 096 Swimsuit. Sizes 10, 12, 14, 16. £10-99 20 wks 55p

**D** ONE-PIECE CIRE SWIMSUIT with zip-front and low-cut back. Zip allows you to have as deep a plunge effect as you dare! Fibre: 80% nylon, elastane. Black. DS 857 Swimsuit. Sizes 10, 12, 14. £15-99 20 wks 80p

**E** FASHION SUNGLASSES by Solome with round eye shape and stylish graduated tint lenses. White. Also in red or yellow. MD 082 Sunglasses. £6-50 20 wks 33p



**F** BANDEAU BIKINI from Exquisite Form, with tanga brief. Optional halter-neck tie. Fibre: 80% nylon, elastane. White-black spot. DS 405 Bikini. Sizes 10, 12, 14, 16. £12-99 20 wks 65p

**G** BANDEAU BIKINI with high-cut legs. Fibre: 82% nylon, elastane. Black-white. DS 124 Bikini. Sizes 10, 12, 14, 16. £11-50 20 wks 58p

**H** CIRE BANDEAU BIKINI from Silk. Optional halter tie. Fibre: 80% nylon, elastane. White or black. DS 087 Bikini. Sizes 10, 12, 14, 16. £13-99 20 wks 75p

**J** ONE-PIECE BANDEAU SWIMSUIT with striking gold stripes. Optional halter tie. High back. Fibre: 82% nylon, elastane. Black-gold. DS 110 Swimsuit. Sizes 10, 12, 14, 16. £9-99 20 wks 50p

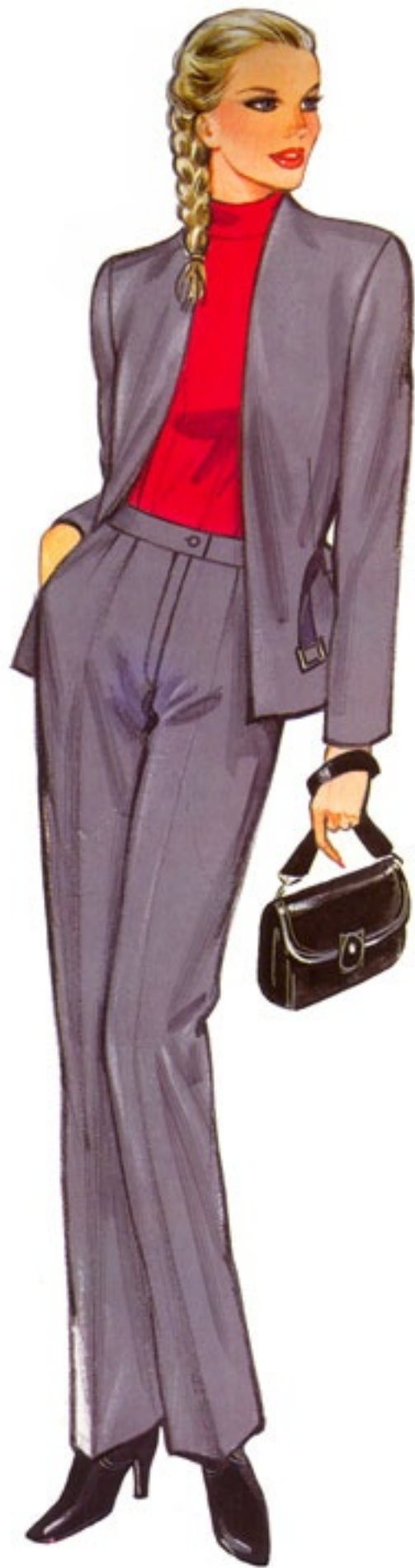
**K** ONE-PIECE BANDEAU SWIMSUIT with optional halter-neck tie and high back. Fibre: 82% nylon, elastane. Black-gold. DS 429 Swimsuit. Sizes 10, 12, 14, 16. £9-99 20 wks 50p

**L** CURTAIN TOP BIKINI with be-side-bottom. Fibre: 80% nylon, elastane. Black-rose. DS 120 Bikini. Sizes 10, 12, 14. £14-99 20 wks 75p

**M** CIRE PLUNGE SWIMSUIT by Trump. Low back and Lurex-effect belt for sunbathing only - not swimming. Fibre: 80% nylon, elastane. Black. DS 115 Swimsuit. Sizes 10, 12, 14, 16. £14-99 20 wks 75p

**N** CURTAIN TOP BIKINI with tanga pants. Fibre: 40% nylon, polyester, elastane. Black-white. DS 041 Bikini. Sizes 10, 12, 14. £9-99 20 wks 50p





# BUTTERICK®

6797  
PATTERN/PATRON  
SIZE/TAILLE

S-M

## CLASSICS



*Diane Van Furstenberg*  
LIQUID ASSETS™



*"One of life's little compensations is breezing through customs with nothing to declare but color."*

LIQUID ASSETS: EASY TO LIVE IN... EASY TO LOVE. For women who like looking simply beautiful, simply...Diane has created the newest silkiest, absolutely most versatile collectors' pieces ever to wrap, tuck, tangle and layer. Seamless jerseys that can take you from boardroom classic to impromptu after five. In fact, the only thing you can't do with your Liquid Assets...is go wrong. The options await you at fine stores everywhere.  
FASHION DIVISION, 745 Fifth Ave., New York, NY 10151 (212) 753-1111 • Los Angeles, CA (213) 620-1962 • Dallas, TX (214) 657-4074.





# burda

# 6264

Größe/Taille/European size:	46	48	50	52	54	56	
Oberweite/Tour de poitrine	cm	92	96	100	104	108	112
Chest width:	ins	36 1/4	37 3/4	39 1/4	41	42 1/4	44



mit Schulterpolstern  
avec épaulettes  
with shoulder pads

# burda

# 6264

Größe/Taille/European size:	46	48	50	52	54	56	
Oberweite/Tour de poitrine	cm	92	96	100	104	108	112
Chest width:	ins	36 1/4	37 3/4	39 1/4	41	42 1/4	44



mit Schulterpolstern  
avec épaulettes  
with shoulder pads









# PATTERN No. 8496









# adidas



**H** THE ADIDAS MATCH TRACKSUIT in heavyweight cotton-blend fabric. Jacket and trousers each have two zip pockets. Straight-leg styling without zips to enable easy leg-length alterations. Fibre: 52% cotton, nylon. Navy-red. **Sizes** S M L XL **174 180**  
**Chest**  
(in) 30/32 34/36 38/40 42/44  
**AH 376 Tracksuit, \$49-99 20 wks \$2-80**



**H**



**K**



**L**



**N**

**M**



**P**



**O**

**N**

**J** ADIDAS TENNIS SHOE in fine quality leather. White. ZX 664 Tennis shoes. Size 6 to 11 only, no half-sizes. \$44-99 20 wks \$2-25

**K** THE ADIDAS NEW YORK HOODED TOP in fleece-backed shewn fabric with two side pockets. Fibre: 62% polyester, traceable. Navy. **Sizes** XS S M L  
**Chest**  
(in) 30/32 34/36 38/40 42/44  
**AH 366 Hooded top, \$39-99 20 wks \$2-80**

**J**

**L** ADIDAS RAIN JACKET with concealed hood in collar, elasticated cuffs, drawcord waist and zip-fastening patch pocket. Fibre: nylon. Navy-white. **Sizes** S M L XL **174 180**  
**Chest**  
(in) 30/32 34/36 38/40 42/44  
**AH 371 Rain jacket, \$79-99 20 wks \$3-00**

**M** IVAN LENDL TENNIS SHIRT by Adidas. Printed design also featured on back. Fibre: 65% polyester, cotton. White-red-blue. **AH 293 Tennis shirt, \* Chest** (in) 30/32, \$36-99 20 wks \$50. \* **Chest** (in) 34/36, 38/40, 42/44, \$39-99 20 wks \$3-00

**N** ADIDAS SHORTS with elasticated waist and side pockets. Contrast stripes down leg. Fibre: 80% polyester, cotton. White or royal. **AH 340 Shorts, \* Waist** (in) 28, \$49-99 20 wks 35p. \* **Waist** (in) 30, 32, 34, 36, \$39-99 20 wks 45p.

**O** ADIDAS T-SHIRT with printed logo and stripes on chest. Fibre: 65% polyester, cotton. Grey or white. **AH 351 T-shirt, \* Chest** (in) 30/32, \$7-99 20 wks 40p. \* **Chest** (in) 34/36, 38/40, 42/44, \$8-99 20 wks 45p.

**P** ADIDAS ATHLETIC SHORTS. Fully-elasticated waist and inner bib. Fibre: cotton. Grey. **AH 360 Athletic shorts, \* Waist** (in) 28, \$7-99 20 wks 40p. \* **Waist** (in) 30, 32, 34, 36, \$9-99 20 wks 50p.



F £7.99



H £7.99

**crown**



K £7.99



L £7.99

**G TOOTAL TIE.** Machine washable.  
Material: Polyester  
Colours: Navy (66), Burgandy (55) or Red (44)  
CL 2857  
£3.99

**H CROWN** standard fitting, long sleeved, printed SHIRT with one breast pocket. Machine washable.  
Material: 65% Polyester, 35% Cotton  
Colours: Blue (22) or Beige (66)  
CH 3014  
Collar sizes: 14½ 15 15½ 16 16½ 17 17½ 18 in  
£7.99

**J TIE** as detailed on page 402.  
CT 2415

**K CROWN** standard fitting, long sleeved, printed SHIRT with one breast pocket. Machine washable.  
Material: 65% Polyester, 35% Cotton  
Colours: White/Burgandy (22) or White/Blue (44)  
CD 3017  
Collar sizes: 14½ 15 15½ 16 16½ 17 17½ 18 in  
£7.99

**L CROWN** standard fitting, long sleeved, printed SHIRT with one breast pocket. Machine washable.  
Material: 65% Polyester, 35% Cotton  
Colours: Blue (22), Pink (77) or Beige (55)  
CF 3016  
Collar sizes: 14½ 15 15½ 16 16½ 17 17½ 18 in  
£7.99

**METRIC EQUIVALENT SIZE CHART**  
Collar size: 14½ 15 15½ 16 in  
Metric equiv. 37 38 39/40 41 cms  
Collar size: 16½ 17 17½ 18 in  
Metric equiv. 42 43 44/45 46 cms



A £44.99

Detachable  
Hood

Padded

B £26.99



C £39.99



D  
£39.99

Detachable  
Sleeves



E  
£39.99

# neue mode

# M

# 3332

## Mehrgrößenschnitt

Multi-size-pattern. Schnittmuster in drei Größen.  
Meermaaten-patroon - Patron tailles multiples.  
Patron diferenței talii.

38 - 40 - 42 - 44 - 46 - 48




A  
C

B  
D



E



CHLOÉ

RYKIEL

HARPER'S BAZAAR AUSTRALIA OCTOBER 1984 111







G Also in aqua

F

A TOUCH  
OF *L*ACE

*In a collection which evokes the softer femininity of times gone by, Joan Collins chooses romantic shades of delicate peach and aqua, then adds a rich trimming of ecru embroidered lace. The effect is breathtaking*

# Traditional Values From £39.99



1  
£55.99



2  
£44.99

Harris Tweed



3  
£39.99



4  
£44.99

1 Harris Tweed Jacket with flap-pockets and centre vent. Blue/Grey herringbone. PURE NEW WOOL 100%. Lined VISCOSE.  
Order chest sizes: 38R 40R 42R 44R 46R 48R 40S 42S 42L 44L

87W 91Z Jacket £55.99  
20 wks £2.80 40 wks £1.40

2 Green check Jacket. Button two with flap-pockets with ticket pocket and side vents. PURE NEW WOOL 100%. Lined VISCOSE.  
Order chest sizes: 38R 38R 40R 42R 44R

48B 11 Jacket £44.99  
20 wks £2.25

3 Terylene Jacket in Brown check design has side vents and straight flap pockets. TERYLENE POLYESTER 100%. Lined NYLON.  
Order chest sizes: 38R 40R 42R 44R 46R 48R 40S 42S 42L 44L

48E 261 Jacket £39.99 20 wks £2.00

4 Loyal check Jacket has side vents and straight flap pockets. TERYLENE POLYESTER 75%. WOOL 25%. Lined NYLON.  
Order chest sizes: 38R 40R 42R 44R 46R 48R 40S 42S 42L 44L

48T 262 Jacket £44.99 20 wks £2.25

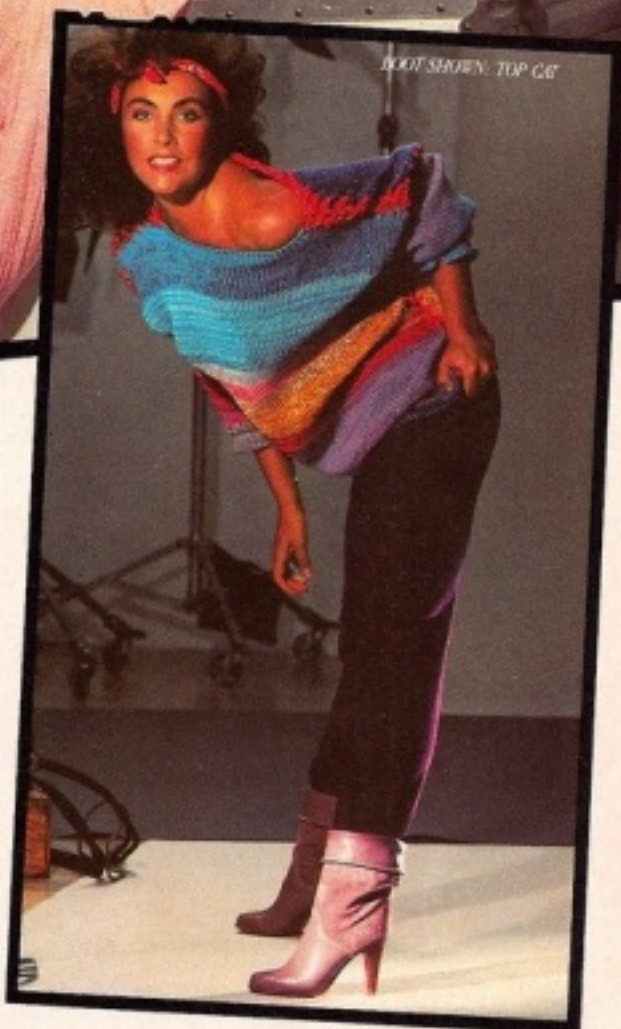
MAN'S SHOP  
GRATTAN 304

# ZODIAC PUTS LAURA BRANIGAN IN THE SPOTLIGHT.

BOOT SHOWN: WEST



BOOT SHOWN: TOP-GO



With both "Gloria" and "Solitaire" gold this year, Laura Branigan lies on the threshold of international stardom. She's hot, often sassy, a bright shining new star. But then, not even Laura Branigan outshines Zodiac boots.

# Zodiac

USA™

WHOEVER YOU ARE, ZODIAC BOOTS  
MAKE YOU FEEL LIKE A STAR.





# FRED PERRY

**A****B****NEW FRAGRANCE****G**

**A** RAIN JACKET by Fred Perry. Contrast side paneling and piping. Concealed hood in color. Elasticated waist and cuffs. See size chart. Fibre: nylon. Navy/light blue. Sizes S, M, L, XL. AH 182 Rain jacket. \$38-99 20 wks 95p

**B** STRIPED KNITTED by Fred Perry. For tennis or leisure wear. Design also featured on back. Fibre: acrylic. Blue.  
 Sizes S M L XL  
 Chest (in) 34/36 37/39 40/42 43/45  
 AH 153 Tennis/leisure shirt. \$38-99 20 wks 60p

**D**

**C** TENNIS SHORTS by Fred Perry, with contrast piping, adjustable waistband and fly front. Fibre: 65% polyester, cotton. White/Violet (in) 30, 32, 34, 36. AH 168 Tennis shorts. \$38-99 20 wks 60p

**D** TRACKSUIT by Fred Perry, featuring contrast panel front and contrast piping down leg. Jacket has two pockets. See size chart. Fibre: acrylic. Navy or wine. Sizes S, M, L, XL. AH 173 tracksuit. \$28-99 20 wks \$1-45

**E****F**

**E** JOGGING SUIT with distinctive three-colour styling by Fred Perry. Trousers feature contrast piping down leg. See size chart. Fibre: 60% acrylic, cotton. Grey-royal. Sizes S, M, L, XL. AH 225 Jogging suit. \$28-99 20 wks \$1-45

**F** JOGGING SUIT by Fred Perry, in brushed-back fabric with contrast stitch detail and two patch pockets. See size chart. Fibre: 50% cotton, 50% acrylic. Grey. Sizes S, M, L, XL. AH 226 Jogging suit. \$22-99 20 wks \$1-15

**G** SPORTS TOILETRIES from Fred Perry Sports-wear. A pack of frequent shampoo, shower and bath gel and deo-stick. All products contain herbal extract of aloe vera because of its moisturising and skin-care properties. AH 518 Sport toiletries. \$6-99 20 wks 75p

**Size chart for items A, D, E and F**  
 Size S M L XL  
 Chest (in) 35/37 38/40 41/43 44/46

For footwear  
 see page 332

# NEW/LOOK

6378

Sizes 10 12 14 16

*maudella*



2







# 100% COTTON TOWELLING DRESSING GOWNS

Items A B C



Items B C

**NEW  
LOW  
PRICE!**



A

B



C



D



E



**A** JUDO-STYLE DRESSING GOWN in luxurious double-sided towelling. Ideal as beach- or bath-robe. Two hip pockets. Length 41 ins. Fibre: cotton. **White or blue.**  
 Sizes 

1	2
Chest (in)	35-40 41-45

  
**AG 137 Dressing gown, \$17-99/20 wks 99p**

**B** SPOTY-DESIGN DRESSING GOWN = judo style in double-sided towelling. Two hip pockets. Length 41 ins. Fibre: cotton. **Light-blue.**  
 Sizes 

1	2
Chest (in)	35-40 41-45

  
**AG 145 Dressing gown, \$20-99 (A/W 85) Now only \$19-99 20 wks \$1-00**

**C** HOODED STRIPED DRESSING GOWN in double-sided towelling. Two hip pockets. Length 41 ins. Fibre: cotton. **Light-blue.**  
 Sizes 

1	2
Chest (in)	35-40 41-45

  
**AG 142 Dressing gown, Was \$20-99 (A/W 85) Now only \$19-99 20 wks \$1-00**

**D** PARSLEY-DESIGN DRESSING GOWN with shawl collar and two hip pockets. Smooth, lightweight fabric. Length 43 ins. Fibre: polyester. **Wine.**  
 Sizes 

S	M	L	XL	
Chest (in)	35/37	38/40	41/43	44/46

  
**AG 173 Dressing gown, \$15-99/20 wks 89p**

**E** WOOL BLEND DRESSING GOWN by McGregor. Length 43 ins. Fibre: 60% wool, 40% mixed fibres. **Navy-check.**  
 Sizes 

S	M	L	XL	
Chest (in)	35/37	38/40	41/43	44/46

  
**AG 001 Dressing gown, \$22-99 20 wks \$1-35**

**NEW!**

**\$15<sup>99</sup>**



Pure new wool

F £32-99

D £45-00

H £49-99

A

B

C

## FRENCH CONNECTION NO.2

### COMPULSIVE

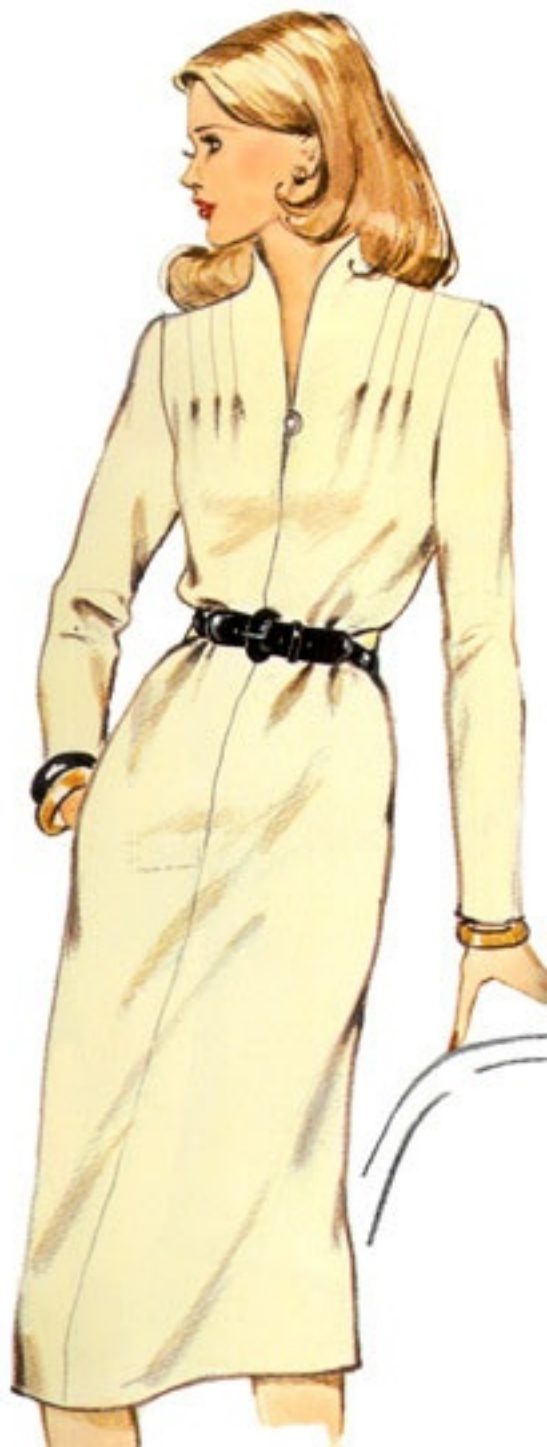
Button Fly

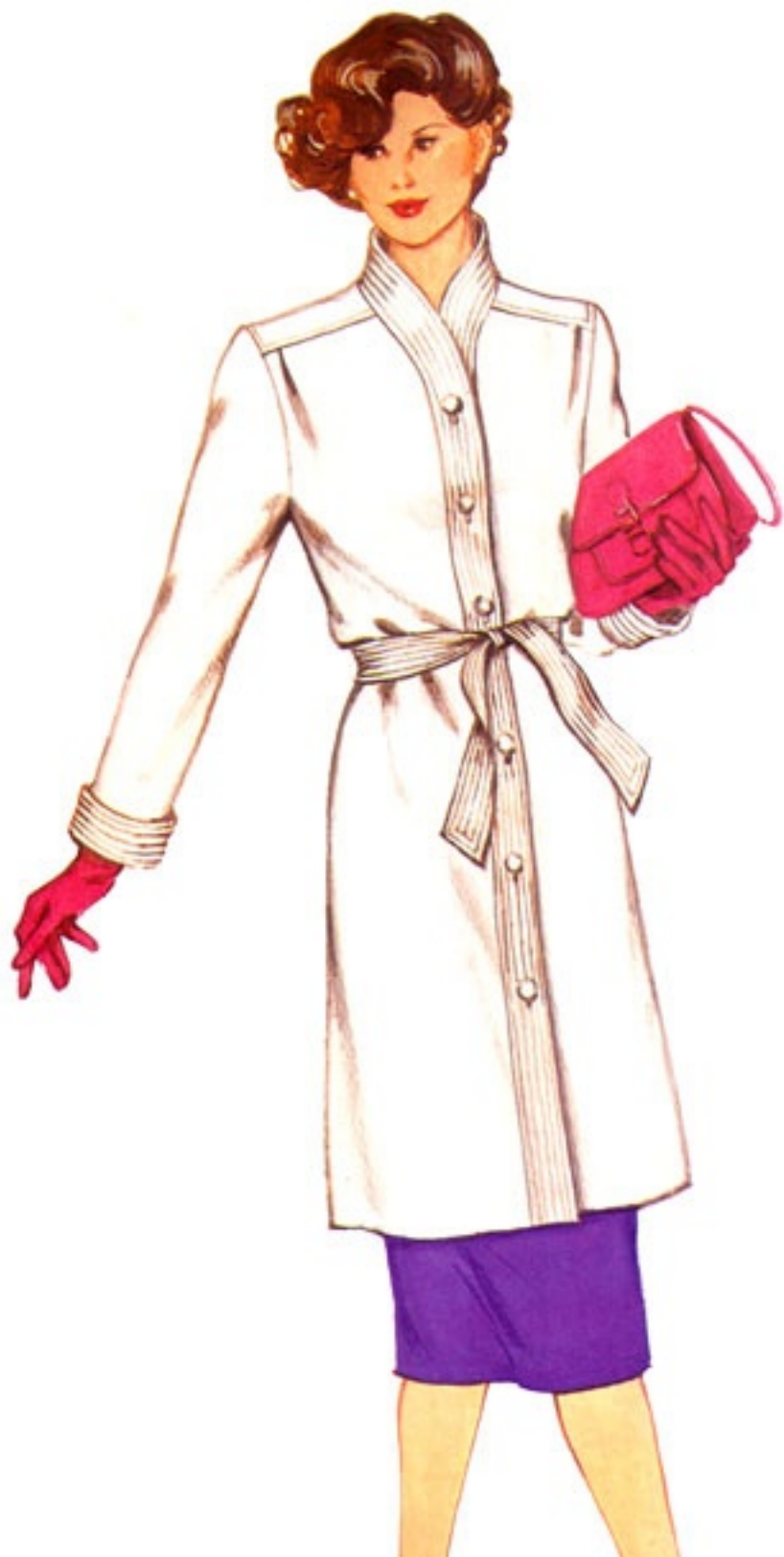
E £21-99

Jacket & Trousers  
sold separately

G £27-50

J £34-99





FOR SUNGLASSES  
SEE PAGE 183

**EROS**

**F**



**G**



*Exquisite form*

**SLIX**

FOR SUNGLASSES  
SEE PAGE 174

**H**



MODEL'S OWN  
SUNGLASSES

**J**



*fauna*

**K**



FOR SUNGLASSES  
SEE PAGE  
186

**Triumph**  
INTERNATIONAL

**L**

**trulo**

**M**



**Triumph**  
INTERNATIONAL

**N**



3259

£1.10

Size 12  
Breast 76 cm  
Girl

Style

2.55 S. Africa

2.00 G.A.











A

Save **£8.00**

Buy all three items

SUIT-A	£39.99	<b>£35.99</b>
SWEATER-B	£17.99	<b>£15.99</b>
SHIRT-C	£18.99	<b>£16.99</b>
	£76.97	<b>£68.97</b>

**AND SAVE £8.00**

When taking advantage of this offer, please state printed individual prices and catalogue numbers on your order form—we will make the necessary adjustments on your invoice



D £19.99

E  
£29.99

*Paul Polip*



B £17.99

**A** Heavy corduroy **SKIRT SUIT** featuring half lined, single breasted jacket with padded shoulders. Straight skirt has back zip and button fastening waistband. Dry clean only. (Belt not supplied)

Material: Cotton Corduroy  
Lining: Viscose. Colour: Jade  
Skirt Length: 29 ins (74 cms)

Order size: 10 12 14 16

**MM 6592 £39.99**

See this page when ordering

**B** Knitted, jacquard **SWEATER**. Machine washable. Material: Acrylic  
Colour: Black/Jade/Purple

Order size: 10/12 14/16

**ML 6593 £17.99**

See this page when ordering



C  
£18.99







# MCCALL'S®

FROM A  
NORTON SIMON INC  
COMPANY



\$3.00

AUST \$3.25  
MEX \$120.00  
VEN Bs 24.00

U.K. C



# 8026

MEN SIZE


38

PATTERN A FOR STRETCH KNITS ONLY

PATTERN / PATRON

# TRIMFIT<sup>®</sup>

LEGGWEAR



OUR SOCKS  
AND TIGHTS FOR  
YOUR WAY  
OF LIFE







*D* VEST



Pure Silk

*D*

*E*



*F*

YVES SAINT LAURENT

*G*

Altondi Mayfair

*C*

OUR **PREMIER**  
COLLECTION



A  
 01 4356 120  
 1-piece swimsuit  
 £17.99

## JERRY HALL

We're delighted to present Jerry's second exclusive collection of glamorous swimwear — especially for you!



☑️ **Body Goals!** The girl from Gotham City is official Batman suit!

Nothing says summer, one-piece bathing like the Gotham Batman Suit — that's an exclusive to you! Exclusive! One-piece swimsuit. 100% nylon. 100% polyester. Size 10, 12, 14, 16, 18, 20, 22, 24, 26, 28, 30.

☑️ **16-20-24-28-32** Swimsuit. Size 10, 12, 14, 16, 18, 20, 22, 24, 26, 28, 30.

☑️ **16-20-24-28-32** Swimsuit. Size 10, 12, 14, 16, 18, 20, 22, 24, 26, 28, 30.

☑️ **16-20-24-28-32** Swimsuit. Size 10, 12, 14, 16, 18, 20, 22, 24, 26, 28, 30.

☑️ **16-20-24-28-32** Swimsuit. Size 10, 12, 14, 16, 18, 20, 22, 24, 26, 28, 30.

☑️ **16-20-24-28-32** Swimsuit. Size 10, 12, 14, 16, 18, 20, 22, 24, 26, 28, 30.

☑️ **16-20-24-28-32** Swimsuit. Size 10, 12, 14, 16, 18, 20, 22, 24, 26, 28, 30.

☑️ **16-20-24-28-32** Swimsuit. Size 10, 12, 14, 16, 18, 20, 22, 24, 26, 28, 30.

☑️ **16-20-24-28-32** Swimsuit. Size 10, 12, 14, 16, 18, 20, 22, 24, 26, 28, 30.

☑️ **16-20-24-28-32** Swimsuit. Size 10, 12, 14, 16, 18, 20, 22, 24, 26, 28, 30.

☑️ **16-20-24-28-32** Swimsuit. Size 10, 12, 14, 16, 18, 20, 22, 24, 26, 28, 30.

☑️ **16-20-24-28-32** Swimsuit. Size 10, 12, 14, 16, 18, 20, 22, 24, 26, 28, 30.

☑️ **16-20-24-28-32** Swimsuit. Size 10, 12, 14, 16, 18, 20, 22, 24, 26, 28, 30.

☑️ **16-20-24-28-32** Swimsuit. Size 10, 12, 14, 16, 18, 20, 22, 24, 26, 28, 30.

☑️ **16-20-24-28-32** Swimsuit. Size 10, 12, 14, 16, 18, 20, 22, 24, 26, 28, 30.

☑️ **16-20-24-28-32** Swimsuit. Size 10, 12, 14, 16, 18, 20, 22, 24, 26, 28, 30.



B BIKINI £19.99



C BEACH DRESS £29.99

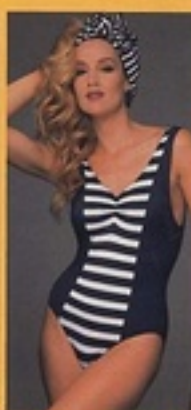


Photographed by Tony McEwan

D MEDIUM LEG SWIMSUIT £24.99



E ONE-PIECE £19.99



F CLASSIC ONE-PIECE SWIMSUIT £19.99



G BIKINI £19.99



J TROUSERS £29.99

Vogue  
Patterns

DESIGNER ORIGINAL

100



BELVILLE  
SASSOON

PATTERN/PATRON 1355



# One jump ahead...

SUMMER-WEIGHT COTTON JUMPSUITS



Belt **B**

**A**

**NEW  
LOW  
PRICE!**

Now only  
**€19<sup>99</sup>**

Jumpsuit

For shoes see  
page 323



**C**

**€18<sup>99</sup>**  
Dungarees

**A** STUD-FASTENING JUMPSUIT with tie belt. See size chart. Material: cotton. Aqua, white or peach. EK 460 Jumpsuit. Sizes 10, 12, 14, 16. Now only ~~€25.99 (A/W '85)~~ **€19.99** 20 wks 30p

**B** WIDE ELASTICATED WEBBING BELT. Material: 65% cotton, 20% rubber, polyester. White, black or red. EK 464 Belt. Sizes 10/12, 14/16. **€9.99** 20 wks 30p

**C** DUNGAREES with front button fastening and tie belt. See size chart. Material: cotton. Pink or white. EK 475 Dungarees. Sizes 10, 12, 14, 16. **€18.99** 20 wks 30p



Vogue<sup>®</sup>  
Patterns  
AMERICAN DESIGNER



BILL BLASS

PATTERN/PATRON 2585

Vogue  
Patterns

PARIS ORIGINAL

*Marie  
March 1982*



GIVENCHY

2792





**GIANNI  
VERSACE**

MONSIEUR GIANNI VERSACE  
L'UNO L'UNO, SIN' GIANNI S' MORI  
MILLE DONNE ETERNE

dondi jersey







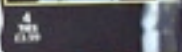
Y.O.U.N.G. C.O.N.N.E.C.T.I.O.N.



1 \$18.99

3 \$18.99

ITEM	PRICE
1	\$18.99
2	\$18.99
3	\$18.99
4	\$18.99
5	\$18.99
6	\$18.99
7	\$18.99
8	\$18.99
9	\$18.99
10	\$18.99
11	\$18.99
12	\$18.99
13	\$18.99



7 \$18.99

8 \$18.99

**1 SACKIE**  
 A dark, quilted parka with a high collar and a large front pocket. \$18.99.

**2 SWEAT**  
 A dark, textured sweater with a high collar and a large front pocket. \$18.99.

**3 STRIPED SHIRT**  
 A striped, long-sleeved shirt with a button-down front. \$18.99.

**4 TIE**  
 A dark, textured tie with a large knot. \$18.99.

**5 TROUSERS**  
 Dark, textured trousers with a high waist and a large front pocket. \$18.99.

**6 BLACK PARKA**  
 A dark, quilted parka with a high collar and a large front pocket. \$18.99.

**7 JUMPER**  
 A dark, textured sweater with a high collar and a large front pocket. \$18.99.

**8 SUE PAINTS**  
 A grey and red jacket with a high collar and a large front pocket. \$18.99.

**9 BAGGY SHIRT**  
 A dark, textured shirt with a high collar and a large front pocket. \$18.99.

**10 BELT**  
 A dark, textured belt with a large buckle. \$18.99.

**11 TROUSERS**  
 Dark, textured trousers with a high waist and a large front pocket. \$18.99.

**12 WIDE BELT**  
 A dark, textured belt with a large buckle. \$18.99.

**13 FLYING SUIT**  
 A dark, textured suit with a high collar and a large front pocket. \$18.99.



**KNOCK OUT**

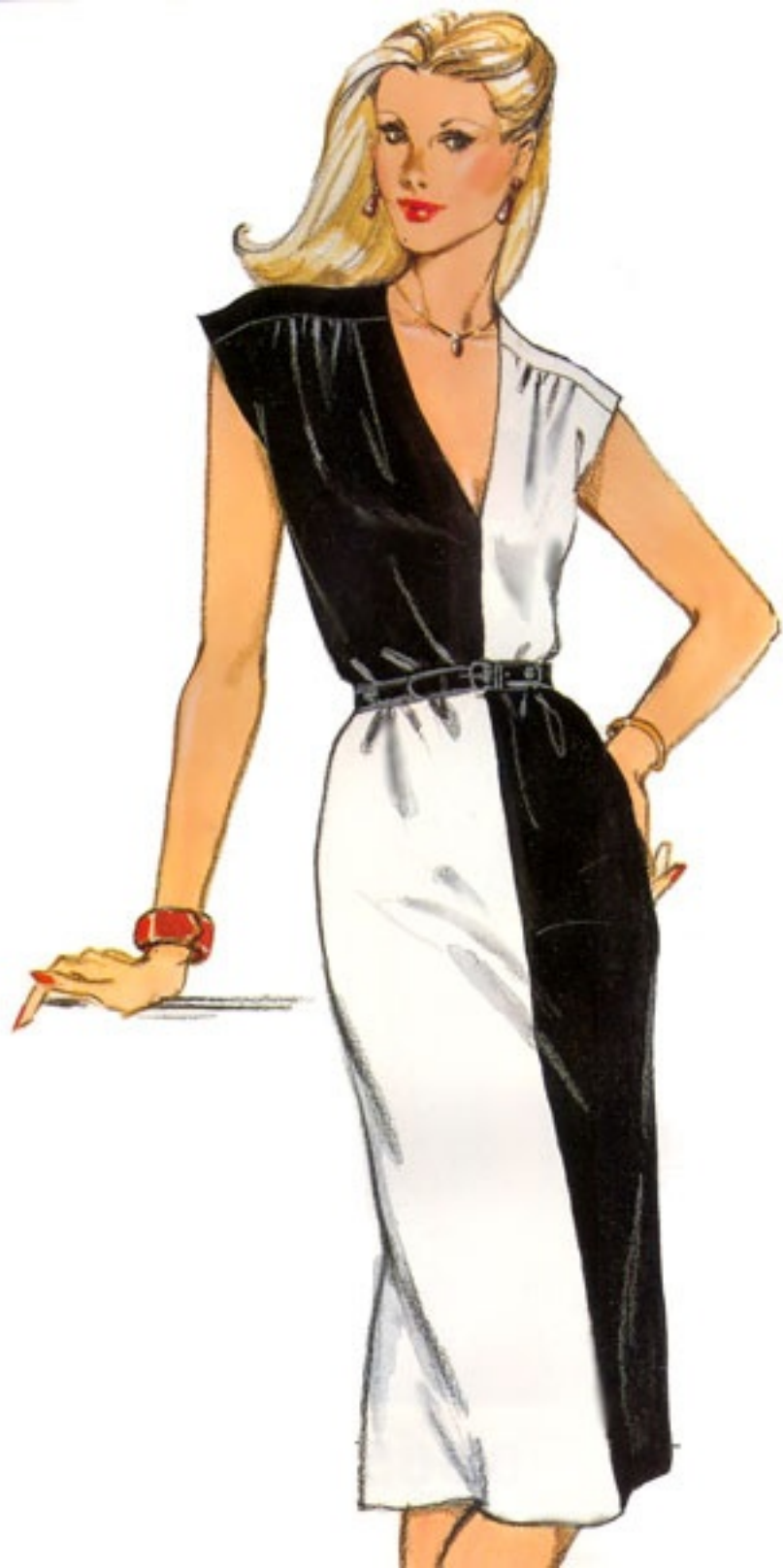
Take a punch in '83 for sporty mix styles. Grab boxy jackets, pleated shirts or pleated front trousers.

Round two sees oversized shirts, sweaters with braces, a button-down all-in-one, button hugging geometric sweater, long lean ski pants and parka ring the bell for instant smash hits.



12 \$18.99

13 \$18.99





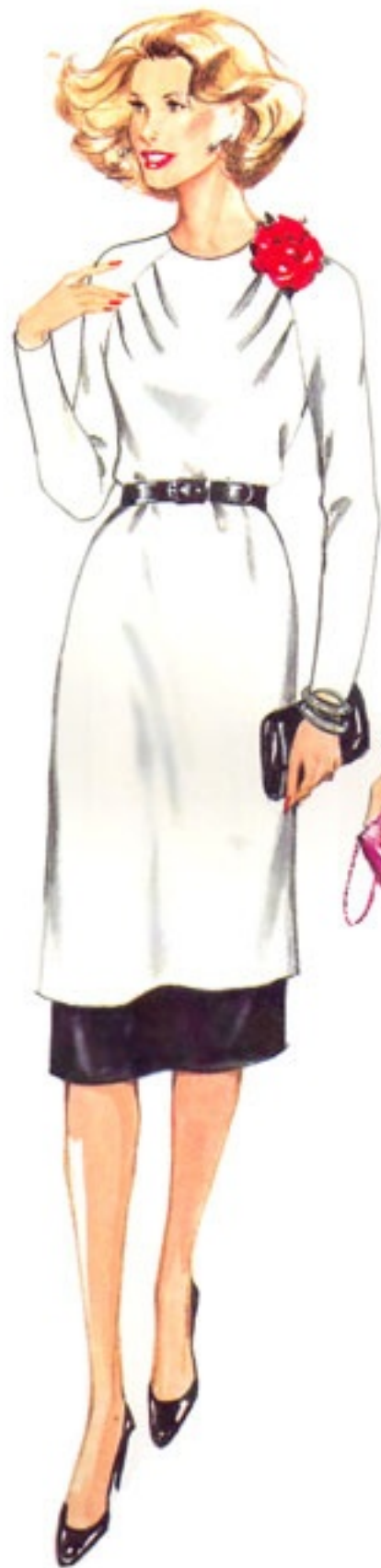


# Littlewoods

SPRING · SUMMER 1986



  
TELEPHONE  
ORDERING  
- NEW  
FULL-COVERAGE  
NETWORK!  
SEE PAGE 1006





# teen image



**A** From  
£14.99



**A**

**A** Padded JACKET with contrast and press-stud trim front and two side pockets. Machine washable.

Material: Nylon  
Colours: Jade / Grey / Navy (44) or  
Blue / Black / Red (55)

CK 0331

Order chest: 28/30 31/33 34/36 38 *lss*  
Metric equiv. 71/76 79/84 86/91 97 *cms*

£14.99 £19.99



**B** From  
£27.99



**C** From  
£28.99

**B** CAMPRÍ pull-on style JACKET featuring quarter zip fastening, two tipped side pockets and one large front patch pocket with flap. Attached concealed hood. Machine washable.

Material: 65% Polyester, 35% Cotton  
Lining: Nylon  
Colour: Grey / Yellow

CC 0329

Order chest: 30 32 34 36 38 *lss*  
Metric equiv. 76 81 86 91 97 *cms*

£27.99 £32.99 £34.99

**C** CAMPRÍ padded, front zip and press-stud fastening JACKET with two zip fastening side pockets and two front pockets with flap and press-stud fastening. Concealed hood. Machine washable.

Material: 65% Polyester, 35% Cotton  
Lining: Nylon  
Colour: Red / Blue

CL 0330

Order chest: 30 32 34 36 38 *lss*  
Metric equiv. 76 81 86 91 97 *cms*

£28.99 £33.99 £35.99

**D** CAMPRÍ padded JACKET featuring two side zip pockets, zip front press-stud fastening and concealed hood. Contrast on arms and shoulders. Machine washable.

Material: 65% Polyester, 35% Cotton  
Lining: Nylon  
Colours: Navy (55) or Yellow (44)

CD 0328

Order chest: 30 32 34 36 38 *lss*  
Metric equiv. 76 81 86 91 97 *cms*

£29.99 £35.99 £39.99



**D** From  
£29.99



**D**

**E** IN-TIME long sleeved, crew neck SWEATER. Machine washable.

Material: Acrylic  
Colour: Navy / Green

CG 0326

Order chest: 30 32 34 36 38 *lss*  
Metric equiv. 76 81 86 91 97 *cms*

£10.99 £14.99 £15.99

**F** Long sleeved, crew neck SWEATER with diamond design. Machine washable.

Material: Acrylic  
Colour: Cobalt / Navy / Jade

CF 0327

Order chest: 30 32 34 36 38 *lss*  
Metric equiv. 76 81 86 91 97 *cms*

£9.99 £12.99

**G** IN-TIME long sleeved, crew neck SWEATER in all over jacquard design. Machine washable.

Material: Acrylic  
Colour: Winter White / Purple / Green

CL 0322

Order chest: 30 32 34 36 38 *lss*  
Metric equiv. 76 81 86 91 97 *cms*

£11.99 £14.99 £15.99

**H** HITCH long sleeved, crew neck SWEATER. Machine washable.

Material: Acrylic  
Colour: Grey / Green / Cream

CH 0325

Order chest: 30 32 34 36 38 *lss*  
Metric equiv. 76 81 86 91 97 *cms*

£11.99 £14.99

## CAMPRI

October 1985

7032  
JUMPSUIT

6578  
COAT

Simplicity

---

**P**reston  
knew he could always depend  
on three things:  
his charm,  
his trust fund and  
his Braemar sweaters.

---



**BRAEMAR**  
The sweater.

Men's argyle sweater of Scottish shetland. Around \$65.  
Braemar International, 1466 Broadway, N.Y.C. 10036 (212) 354-1780.

Found in Mom's Basement





MEHRGRÖSSENSCHNITT · Patron multi-tailles · Meermaten · patroon

# neue mode

**M 9742**

Patrón multitalla  
Multi-size-pattern

Größe Taille	36	38/40	42	44/46	Mantel Taille
US Size	10	12/14	16	18/20	Ampt. Size









COLLECT  
Very  
Easy  
Vogue®



1730

Shirone von Finsterberg

AMERICAN DESIGNER ORIGINAL

PATTERN/PATRONI

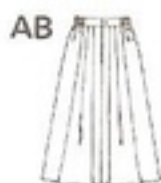
# burda®

5045

38 - 50

12 - 24

1980



Größen/Tailles/European sizes: 38+40+42+44+46+48+50  
Corresponding sizes: 12+14+16+18+20+22+24



10,000  
PRICES REDUCED OR FREE



# Littlewoods

Spring & Summer 1982







# SUPER VALUE

ONLY

£29.99

Padded JACKET with concealed front zip fastening and hood, four front flapped patch pockets, D ring sleeve adjusters and internal drawstring at waist. Machine washable.  
Material: 65% Polyester, 35% Cotton  
Lining: Nylon. Colors: Grey (01), Navy (04), Black (22), Ecru (55) or Khaki (33)

CH 4002

Order size: S M

To fit chest 34/36 37/39 ins

Order size: L XL

To fit chest 40/42 43/45 ins

£29.99



Concealed Hood

Zip and  
Press-stud  
Fastening

Drawstring Waist

Tab and Buckle  
Trim Cuffs

Large Side  
Entry Pockets





**1** Go for flying colours... confederate-style fastening for this drill flying suit, with contrasting collar and lapel. See size chart. Fibre: cotton. **Blue, £5 491 Flying suit**  
Sizes 10, 12, 14, 16 £25.99 20 and £1.90

**2** At ease with a soft-spun jersey dress from Mt. Airy, trimmed with stud detail. Hand wash. **Length 45 ins.** See size chart. Fibre: polyester. **Red, CF 632 Dress**  
Sizes 10, 12, 14, 16 £27.99 20 and £1.40

**3** Two-tone padded jacket with a vibrant sheen. Zip fastening. See size chart. Fibre: 65% polyester, cotton lining nylon. **Blue-red, YW 127 Jacket**  
Sizes 10, 12, 14, 16 £19.99 20 and £1.99

**4** Line up for a twin set... long-sleeved crew-neck jumper with a jacquard waist, topped by a long-sleeved low-buttoning cardigan. See size chart. Fibre: acrylic. **Red-blue, YK 538 Twin set**  
Sizes 10, 12, 14, 16 £19.99 20 and £1.99



See inside front cover for details

FOR SHOES SEE PAGES 218B-250

**Kissed out-  
confederate style**



A photograph of three men in suits standing on a set of stairs. The man on the left is wearing a dark brown suit, the man in the middle is wearing a tan suit, and the man on the right is wearing a dark brown suit. They are all looking towards the right. The background consists of a staircase with a metal railing.

ALSO IN  
TALL,  
SHORT,  
EXTRA TALL,  
BIG-TALL,  
AND BIG

# Comfortable, versatile CORDUROY



ALSO IN  
TALL,  
SHORT

## 3-piece Suit \$75<sup>00</sup>

FABRIC: Corduroy is a woven blend of cotton and polyester.

DETAIL: Coat: Two button model with notched lapels and center vent. Two lower set-in pockets with flaps. Set-in breast pocket. Full nylon lining. Vest: Five-button front. Slacks: Regular cut. Two slant front pockets, set-in back pockets. Ban-Rol® waistband. Belt loops. Straight legs hemmed to your inseam and ready to wear. Imported.

CARE: Dry clean only.

SIZES, COLORS, ORDERING INFORMATION: Waist size will be as indicated in chart. Sorry, no choice. For good fit be sure to state both chest size and exact inseam length.

Chest size . . .	36	38	40	42	44	46
Waist size . . .	30	32	34	36	39	41

Regular. For men over 5 ft. 7 in. to 5 ft. 11 in. tall. State even chest size 36, 38, 40, 42, 44 or 46, then exact inseam 29½ to 32½.

N 45 H 12801V—Tan  
N 45 H 12804V—Brown  
Shipping weight 3 lbs. 4 oz. . . . . \$75.00

Tall. For men over 5 feet 11 inches to 6 feet 3 inches tall. State even chest size 38, 40, 42, 44 or 46, then exact inseam 32½ to 34.

N 45 H 12802V—Tan  
N 45 H 12805V—Brown  
Shipping weight 3 lbs. 6 oz. . . . . \$75.00

Short. For men 5 feet 3 inches to 5 feet 7 inches tall. State even chest size 38, 40 or 42, then exact inseam 26½ to 29½.

N 45 H 12803V—Tan  
N 45 H 12806V—Brown  
Shipping weight 3 lbs. 1 oz. . . . . \$75.00

## Sportcoat \$39<sup>99</sup>

FABRIC, CARE: Wide wale cotton and polyester corduroy. Nylon lining. Dry clean.

DETAILING: Two-button model. Lower patch flap pockets, set-in breast pocket. Center vent. Imported.

SIZES, COLORS, ORDERING INFORMATION: See the Fitting Room on page 625.

Regular. Over 5 ft. 7 in. to 5 ft. 11 in. tall. State even chest size 36, 38, 40, 42, 44 or 46.

N 45 H 25061F—Brown  
N 45 H 25064F—Tan  
Shipping weight 2 pounds . . . . . \$39.99

Tall. Over 5 feet 11 in. to 6 ft. 3 in. tall. State even chest size 38, 40, 42, 44 or 46.

N 45 H 25062F—Brown  
N 45 H 25065F—Tan  
Shipping weight 2 pounds 2 ounces . . \$39.99

Short. For men 5 feet 3 inches to 5 ft. 7 in. tall. State even chest size 38, 40 or 42.

N 45 H 25063F—Brown  
N 45 H 25066F—Tan  
Shipping weight 1 pound 8 ounces . . . \$39.99



## Beef-roll Slip-on

UPPERS: Leather with moc-toe styling. SOLES AND HEELS: Composition. Steel shank helps support arch.

SIZES, COLORS AND ORDERING INFORMATION:

State size as listed.  
Men's narrow: 8B, 8½B, 9B, 9½B, 10B, 10½B, 11B, 12B and 13B.

Men's medium: 7½D, 8D, 8½D, 9D, 9½D, 10D, 10½D, 11D, 12D and 13D.

Men's wide: 7½EE, 8EE, 8½EE, 9EE, 9½EE, 10EE, 10½EE, 11EE, 12EE, 13EE.

67 H 73134F—Spice brown  
67 H 73144F—Burgundy  
67 H 72133F—Black  
Shipping weight 2 lbs. 10 oz. . . . . \$34.99

# Softly fleeced Warm-up Suits

**\$17.99** Average sizes

## (1 thru 4) Creslan® acrylic knit Warm-up Suits

FABRIC: Shape-holding acrylic knit fleeced inside for warmth and softness.

DETAILING: Jacket has full zip-front, convertible collar. Solid-color body with white contrasting stripes on sleeves. Pull-on pants have elastic waist, hemmed straight legs, one back patch pocket. Solid-color body with white stripes down sides.

CARE: Machine wash, warm and tumble dry. Do not use bleach.

SIZES, COLORS, ORD. INFO: Suit sizes shown below. Order only one size per set.

Average. For men 5 ft. 7 in. to 5 ft. 11 in. tall. State letter size S, M, L or XL, not inches when ordering.

- (1) 41 H 47464F—Navy blue
- (2) 41 H 47463F—Green
- (3) 41 H 47461F—Burgundy
- (4) 41 H 47462F—Royal blue

Shipping weight 1 lb. 11 oz. . . . . \$17.99

Tall. For men 5 ft. 11 in. to 6 ft. 3 in. tall. State letter size M, L or XL, not inches.

- (1) T 41 H 47474F—Navy blue
- (2) T 41 H 47473F—Green
- (3) T 41 H 47471F—Burgundy
- (4) T 41 H 47472F—Royal blue

Shipping weight 1 lb. 13 oz. . . . . \$19.99

Order size	S	M	L	XL
Chest, in. . .	34-36	38-40	42-44	46-48
Waist, in. . .	30-32	34-36	38-40	42-44

## (5) The Winner II . . . Sports Shoe

UPPERS: Lightweight nylon and sueded split-leather. Tongue is lined with cushioned nylon tricot and topline is padded. Peaked back helps support ankle and helps hold heel in place. Imported. See Cleaning Note on page 233.

SOLES AND HEELS: Cushioned sponge rubber insole. Extra padding at arch helps add support. The high-rise rubber sole is traction-treaded.

SIZES, COLORS AND ORDERING INFO: Men's med. sizes: 7½M, 8M, 8½M, 9M, 9½M, 10M, 10½M, 11M, 12M. Royal blue shoe and spice tan shoe also in size 13M.

- 76 H 96331F—Royal blue
- 76 H 96332F—Spice tan
- 76 H 96335F—Black
- 76 H 96338F—Silver

Shipping weight 2 lbs. 4 oz. . . . . \$17.99

ALSO IN  
TALL  
SIZES





**There's never been  
more love in the air!**



Southwest Airlines has more flights to the most convenient airports in the Southwest.  
All for the lowest everyday fares! You see, when you're in love, the sky's the limit!

**LOVING YOU IS WHAT WE DO**

# Pair these!

## Sweatshirts and Pants of Creslan® acrylic

**FABRIC:** Knit of 100% Creslan® acrylic, fleeced inside for comfort. Cover stitched seams for strength and durability.

**CARE:** Machine wash, warm; tumble dry.

**Average.** Men 5 ft. 7 in. to 5 ft. 11 in. tall.

**Tall.** Men over 5 feet 11 inches to 6 feet 3 inches tall. Sweatshirts: 2 inches longer than average sizes. Sweatpants: 2 inches longer than average sizes.

### (1) Hooded Jacket

**DETAILING:** Zip front, drawstring hood. Two hand-warmer pockets. Set-in long sleeves. Rib-knit cuffs and bottom.

**SIZES, COLORS AND ORDERING INFORMATION:** Chest sizes S(34-36 in.); M(38-40); L(42-44); XL(46-48).

**Average.** State size S, M, L or XL; not in.

41H48547F-Navy 41H48546F-Royal

41H48542F-Gray 41H48549F-Tan

41H48548F-Wine

Shipping weight 7 ounces.....\$13.99

**Tall.** State size M, L or XL; not inches.

T41H48557F-Navy T41H48556F-Royal

T41H48555F-Gray T41H48554F-Tan

T41H48558F-Wine

Shipping weight 8 ounces.....\$14.99

### (2) Crew-neck Sweatshirts

**DETAILING:** Pullover style with raglan shoulders. Rib-knit neck, cuffs, bottom.

**SIZES, COLORS, ORDER INFO:** Chest sizes S(34-36 in.); M(38-40); L(42-44); XL(46-48).

**Average.** State size S, M, L or XL; not in.

Long sleeves Short sleeves

41H48587F-Navy 41H48607F-Navy

41H48582F-Gray 41H48602F-Gray

41H48588F-Wine 41H48608F-Wine

41H48586F-Royal 41H48606F-Royal

41H48584F-Tan 41H48609F-Tan

Wt. 6 oz. ...\$7.99 Wt. 5 oz. ...\$6.99

**Tall.** State letter size M, L or XL, not in.

Long sleeves Short sleeves

T41H48597F-Navy T41H48617F-Navy

T41H48592F-Gray T41H48612F-Gray

T41H48598F-Wine T41H48618F-Wine

T41H48596F-Royal T41H48616F-Royal

T41H48594F-Tan T41H48619F-Tan

Wt. 6 oz. ....\$8.99 Wt. 5 oz. ....\$7.99

### (3) Baseball collar zip-front Sweatshirt

**DETAILING:** Rib-knit baseball style collar, rib-knit cuffs and bottom. Set-in long sleeves. Pouch pockets.

**SIZES, COLORS AND ORDER INFO:** Chest sizes S(34-36 in.); M(38-40); L(42-44); XL(46-48).

**Average.** State size S, M, L or XL; not in.

41H48627F-Navy 41H48626F-Royal

41H48622F-Gray 41H48624F-Tan

41H48628F-Wine

Shipping weight 10 ounces.....\$11.99

**Tall.** State size M, L or XL; not in.

T41H48637F-Navy T41H48636F-Royal

T41H48632F-Gray T41H48634F-Tan

T41H48638F-Wine

Shipping weight 11 ounces.....\$12.99

### (4) Sweatpants

**DETAIL:** Drawstring waist. Elastic cuffs.

**SIZES, COLORS AND ORDER INFORMATION:** Waist sizes S(30-32); M(34-36); L(38-40) or XL(42-44) inches.

**Average.** State letter size S, M or L; not inches.

41H48567F-Navy 41H48566F-Royal

41H48562F-Gray 41H48564F-Tan

41H48568F-Wine

Shipping weight 6 ounces.....\$7.99

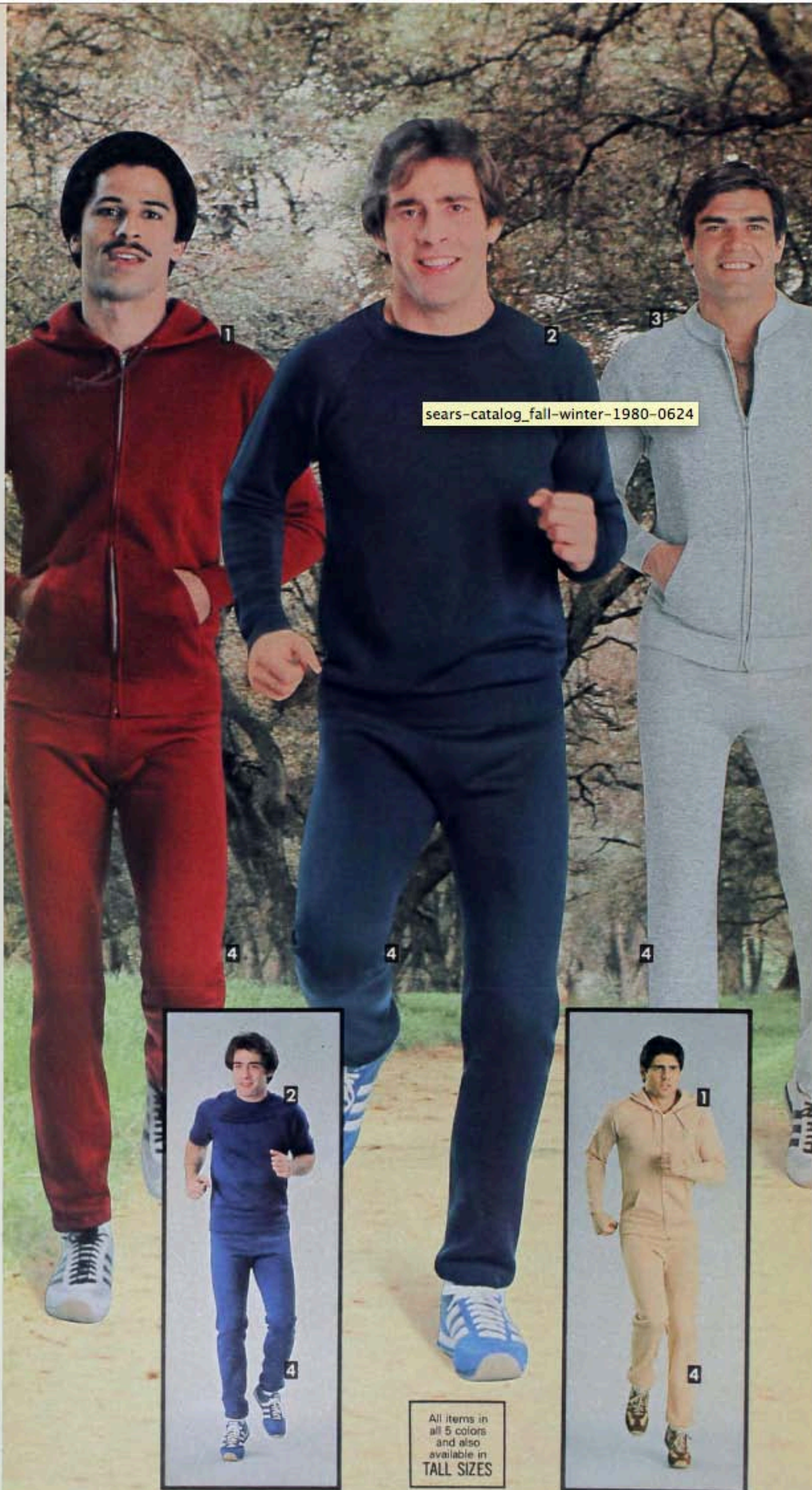
**Tall.** State letter size M, L or XL; not inches.

T41H48577F-Navy T41H48576F-Royal

T41H48572F-Gray T41H48574F-Tan

T41H48578F-Wine

Shipping weight 6 ounces.....\$8.99



sears-catalog\_fall-winter-1980-0624



All items in all 5 colors and also available in TALL SIZES

Shoes sold on page 618.

sears-catalog\_fall-winter-1980-0632

# Warm-up Suits

2 styles, 2 colors  
all in easy-care  
triple-knit acrylic

Your choice of suit with baseball-style jacket  
or suit with convertible collar jacket

## \$24<sup>99</sup>

FABRIC: 100% triple-knit acrylic.

CARE: Machine wash at warm temperature setting and tumble dry, low. Do not use bleach.

SIZES: Suit sizes shown below. Order only one size per set.

Order size	S	M	L	XL
Chest, in.	34-36	38-40	42-44	46-48
Waist, in.	30-32	34-36	38-40	42-44

### (1 and 2) Convertible Collar Warm-up Suit

DETAILING: (1) has red and navy trim. (2) has burgundy and brown trim. Jacket: Full zip front. Long sleeves have wide contrast color stripe inset bordered on each side with contrast piping. Welt pockets. Rib-knit collar, cuffs, bottom band with stripe trim. Pants: With elasticized waist. Back patch pocket. The stitched front creases give a neatly tailored appearance. Hemmed bottom.

SIZES, COLORS, ORDER INFO:  
State letter size S, M, L or XL; not inches.

- (1) 41 H 48643F—Ecru, navy suit with red, navy trim
- (2) 41 H 48644F—Ecru, brown suit with burgundy, brown trim

Shpg. wt. 1 lb. 11 oz. .... \$24.99

### (3 and 4) Baseball-style Warm-up Suit

DETAILING: Jacket: Stylish construction with ecru panels at sides and under sleeves. Full front zipper. Set-in long sleeves. Rib-knit collar, cuffs and bottom band have a double row of stripes. Pants: Elasticized waist. 2 front slash pockets. Stitched front crease gives tailored appearance. Hemmed bottom.

SIZES, COLORS, ORDER INFO:  
State letter size S, M, L or XL; not inches.

- (3) 41 H 48642F—Brown, ecru suit
- (4) 41 H 48641F—Navy, ecru suit

Shpg. wt. 1 lb. 11 oz. .... \$24.99

Shoes sold separately  
on facing page.

"Charge It" if you wish  
... see page 721 for details



# Stretch Denim SEPARATES

Also in  
TALL  
EXTRA TALL



with an accent on  
**Fabric**—Brushed Hug Bunny™ denim in a blend that stretches for comfort in action

## Separates

**FAB:** Denim of 50% Monsanto polyester, 50% cotton is a soft, brushed fabric that stretches for better fit, greater shape retention and comfort. Resists wrinkling, too.  
**DETAILING:** Garments feature patch pockets with decorative top stitching. Antique copper-look buttons. Contrast stitching.  
**CARE:** Blazer and Vest: Dry clean only. Jeans: Machine wash warm and tumble dry.

### The Blazer

**DETAILING:** Two-button model has notched lapels, back center vent. One chest pocket. One inside chest pocket. Slightly padded shoulders, fused front facing to hold shape and add body. Full acetate lining.

**SIZES, ORDER INFO:** See the Fitting Room, page 625.

**Regular.** For men over 5 ft. 7 in. to 5 ft. 11 in. tall. *State even chest size 36, 38, 40, 42 or 44.*

N 45 H 36041F—Shipping weight 1 lb. 12 oz. ... \$44.99

**Tall.** For men over 5 ft. 11 in. to 6 ft. 3 in. tall. *State even chest size 38, 40, 42, 44 or 46.*

N 45 H 36042F—Shipping weight 1 lb. 15 oz. ... \$44.99

**Extra Tall.** For men over 6 ft. 3 in. to 6 ft. 7 in. tall. *State even chest size 40, 42, 44, 46, 48 or 50.*

N 45 H 36043F—Shipping weight 2 lbs. 2 oz. ... \$49.99

### The Vest

**DETAILING:** Five-button front. Self-fabric back. Full acetate lining.

**SIZES AND ORDERING INFORMATION:**

**Average.** For men over 5 ft. 7 in. to 6 ft. 3 in.

*State even chest size 36, 38, 40, 42, 44 or 46.*

N 45 H 36044F—Shpg. wt. 10 oz. ... \$17.99

**Extra Tall.** For men over 6 ft. 3 in. to 6 ft. 7 in.

*State even chest size 40, 42, 44, 46, 48, 50.*

N 45 H 36046F—Shpg. wt. 12 oz. ... \$18.99

### The Jeans

**DETAIL:** Straight leg styling. Two slant front pockets. Back yoke. Simulated watch pocket, button waist closure, brass zipper. Belt loops. (2-in. inside openings).

**SIZES, ORDER INFO:** See How to Measure, p. 572. Women's Conversion Chart below.

**Regular.** For men over 5 ft. 7 in. to 5 ft. 11 in. tall.

**Trim Cut.** For slim builds. *State waist in inches, then inseam as letter S, M or L from this chart:*

Waist, inches	Inseam, inches
29, 30, 31, 32, 33, 34, 36, 38	S(29½); M(31); L(33)

N 45 H 36047F—Shpg. wt. 1 lb. 5 oz. ... \$17.99

**Regular Cut.** For average builds. *State waist in inches, then inseam as letter S, M or L from this chart:*

Waist, inches	Inseam, inches
36, 38, 40, 42	S(29½); M(31); L(33)

N 45 H 36048F—Shpg. wt. 1 lb. 7 oz. ... \$19.99

**Tall, Extra Tall.** Men over 5 ft. 11 in. to 6 ft. 3 in. *State even waist 30, 32, 34, 36, 38, 40, 42 or 44 in., then exact inseam 27 to 38 in.*

N 45 H 36049V—Shpg. wt. 1 lb. 8 oz. ... \$21.99

T.M. of Burlington Industries.



### Side-zip Western Boot

**UPPERS:** Genuine leather. Vamp is cotton drill lined; shaft is unlined. Narrow round toe. Side zipper for easy on. Boot measures 7 inches high.

**SOLES AND HEELS:** Composition sole. Good-year welt construction. Steel shank. Cowboy heel with rubber heel lift.

**SIZES, COLORS AND ORDERING INFORMATION:**

*Men's medium sizes: 7½D, 8D, 8½D, 9D, 9½D, 10D, 10½D, 11D, 12D. Please state size as listed.*

67H87613F—Camel tan  
67H87614F—Cordovan brown

Wt. 3 lbs. 7 oz. \$44.99

### Jeans Conversion Chart for women

*State men's waist size, then inseam length. For correct men's waist size, measure your hips at their fullest point, then use chart below. To find correct inseam length, measure best fitting jeans along inside seam from crotch to bottom of leg.*

ORDER MEN'S WAIST	29	30	31	32	33	34
If hips measure (inches)	34-35	35½-36½	37-38½	37-38½	39-40½	39-40½



## Relax and take life easy in Traditional Jumpsuits

### (1) Comfortable KNIT

**FABRIC:** 100% polyester knit that moves with you when you move and still retains its neat appearance and comfortable, easy-action fit.

**DETAILING:** Elastic back for proper fit. Adjustable front belt with metal buckle. Two-way zipper. Permanent crease for neat good looks. Cuffed short sleeves; long sleeves with button cuffs. Six pockets: two chest; two front; two back (one with convenient button closure). Collar has inner lining for better shape retention.

**CARE:** Machine wash at warm temperature and tumble dry.

**SIZES, COLORS, ORDERING INFO:** See Chart 1 at right below.

**Average** (over 5 ft. 7 in. to 5 ft. 11 in.). **State chest size** 38, 40, 42, 44 or 46 inches. **Tall** (over 5 ft. 11 in. to 6 ft. 3 in.). **Please state chest size** 40, 42, 44 or 46 inches.

Color	Average		Tall	
	Short sleeve	Long sleeve	Short sleeve	Long sleeve
Light blue	51 H 60165F	51 H 60269F	51 H 60175F	51 H 60279F
Brown	51 H 60164F	51 H 60268F	51 H 60174F	51 H 60278F
Navy	51 H 60163F	51 H 60262F	51 H 60173F	51 H 60272F
Shpg. wt.	1 lb. 10 oz.	1 lb. 10 oz.	1 lb. 12 oz.	1 lb. 12 oz.
Price	\$24.99	\$26.99	\$26.99	\$28.99

### (2) Long-wearing POPLIN

**FABRIC:** Sturdy poplin in a great blend of durable polyester for long wear and naturally soft cotton for comfort and absorbency.

**DETAILING:** Half belt with metal buckle. Cuffed short sleeves. Two-way zipper. Permanent crease for neat good looks. Collar has permanent stays or inner lining for shape retention. Six pockets: two chest (crest on left); two lower front; two back (left has button).

**CARE:** Machine wash at warm temperature and tumble dry.

**SIZES, COLORS, ORDERING INFO:** See Chart 1 at right below.

**Short** (5 ft. 3 in. to 5 ft. 7 in.). **Average** (over 5 ft. 7 in. to 5 ft. 11 in.). **Tall** (over 5 ft. 11 in. to 6 ft. 3 in.). **State chest size** 38, 40, 42, 44 or 46 in.

Color	Short	Average	Tall
Tan	51 H 60104F	51 H 60114F	51 H 60124F
Navy	51 H 60103F	51 H 60113F	51 H 60123F
Medium blue	51 H 60102F	51 H 60112F	51 H 60122F
Shipping weight	1 lb. 6 oz.	1 lb. 6 oz.	1 lb. 6 oz.
Price	\$21.99	\$21.99	\$22.99

ALSO IN TALL SIZES



ALSO IN SHORT AND TALL SIZES

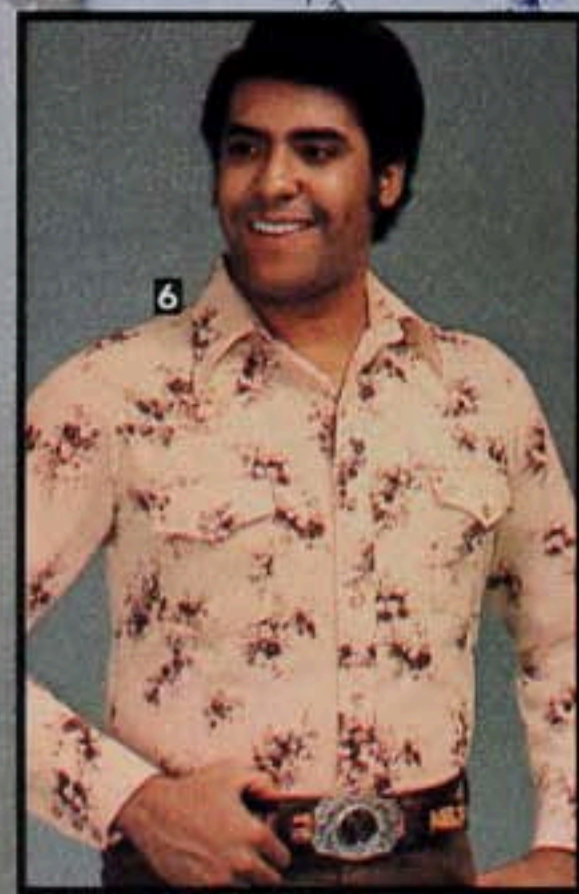
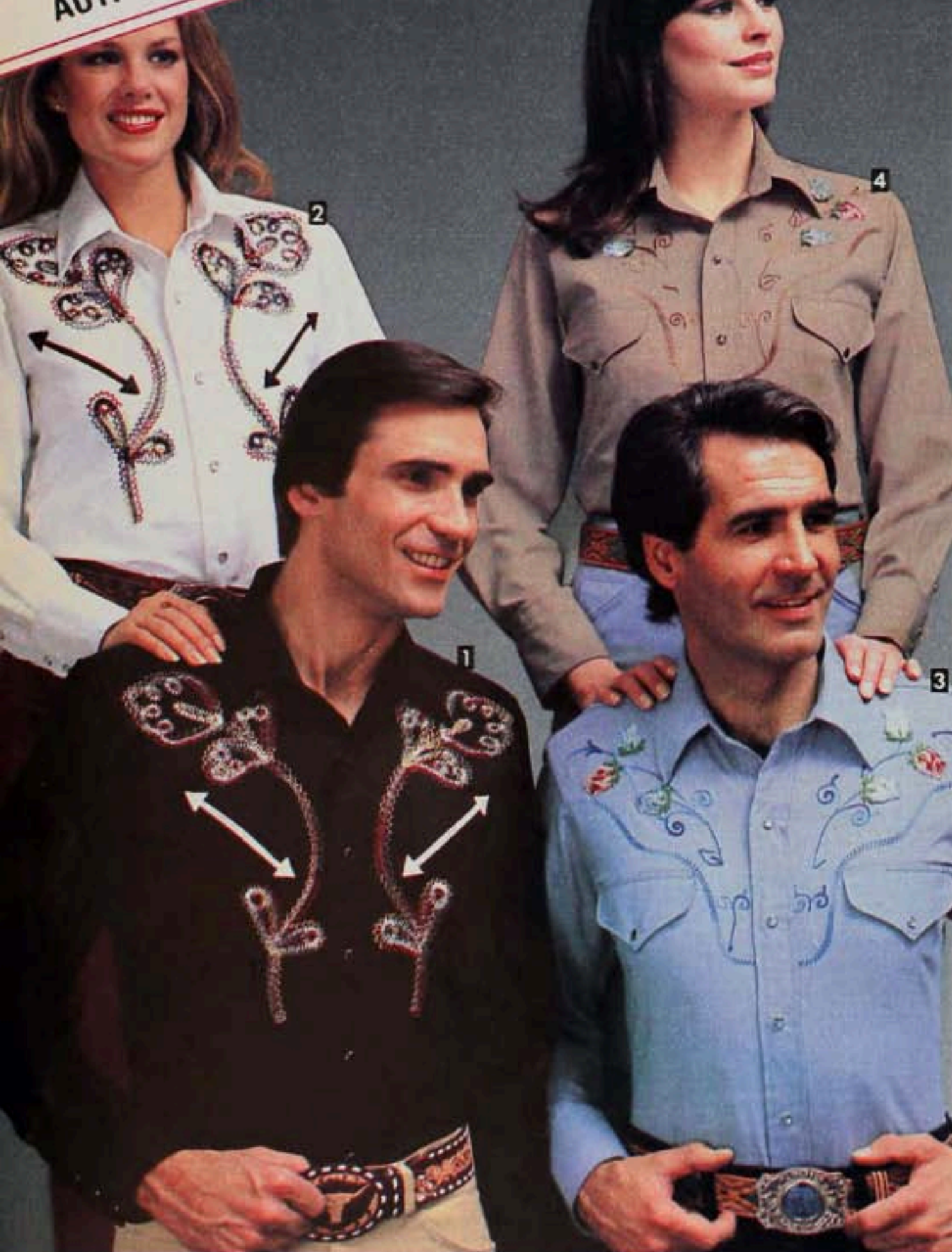


### the fitting room for Jumpsuits

Sized for wear over underwear. Chart 1 shows if you can wear chest sizes shown. Order only sizes listed with each item.

CHART 1	CHEST SIZE	38	40	42	44	46
		fits waist up to (in.)				
		35	37	39	41	43

# ROEBUCKS AUTHENTIC WESTERN WEAR



## WRINKLE-RESISTANT FANCY SHIRTS

**(1 and 2) Embroidered front and contrast piping**  
**FABRIC:** Easy-care woven blend of Kodel® polyester for long wear and cotton for comfort and absorbency.  
**DETAILING:** Handsome, colorful embroidery on front. Smart contrast piping on two front inset arrow pockets. Double fabric back yoke. Front placket and barrel cuffs with simulated pearl snap closures. Button closure at neck. Collar with permanent stays. Long tails stay tucked in for neatness. Long sleeves.  
**CARE:** Little or no ironing needed when machine washed at warm temperature and tumble dried.  
**SIZES, COLORS, ORDER INFO:** For average builds. Long sleeves proportioned to neck size. To order for women, see Chart 1 on p. 659. Men's neck sizes XS(13½ in.); S(14-14½); M(15-15½); L(16-16½); XL(17-17½). State letter size XS, S, M, L or XL, not number.  
 (1) C 51 H 50926F—Black  
 (2) C 51 H 50925F—White  
 Shipping weight 15 ounces .....\$29.99

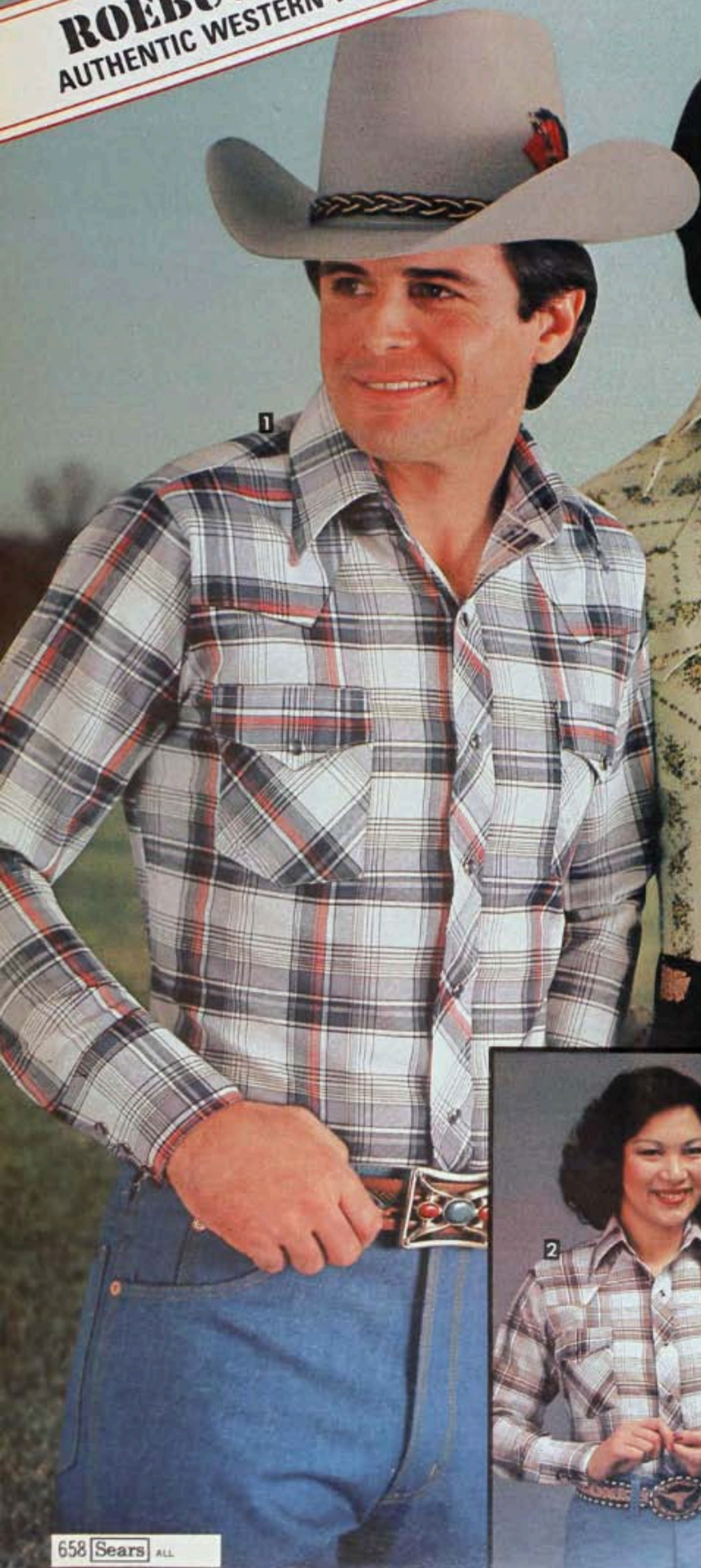
**(3 and 4) Rose-pattern embroidered front**  
**FABRIC:** Easy-care woven blend of polyester, cotton and acrylic for long wear.  
**DETAILING:** Attractive rose applique combines with subtle embroidery to give front panels a distinctive look. Double fabric back yoke. Color-coordinated snaps on front placket and sleeve cuffs. Convenient button closure at neck. Banded collar with permanent stays. Long tails stay tucked in for neatness. Long sleeves.  
**CARE:** Little or no ironing needed when machine washed at warm temperature and tumble dried.  
**SIZES, COLORS, ORDER INFO:** For average builds. Long sleeve proportioned to neck size. To order for women, see Chart 1 on page 659. Men's neck sizes XS(13½ in.); S(14-14½); M(15-15½); L(16-16½); XL(17-17½). Please state letter size XS, S, M, L or XL, not number size.  
 (3) C 51 H 50797F—Blue  
 (4) C 51 H 50798F—Light brown  
 Shipping weight 12 ounces .....\$29.99

**(5 and 6) With smart floral pattern and snaps on sleeve placket**  
**FABRIC:** Easy-care woven blend of polyester for long wear and cotton for comfort.  
**DETAILING:** Handsome floral design. Double fabric front and back yokes. Color-coordinated snaps on front placket, sleeve placket, cuffs and pocket flaps (pencil slot in left pocket flap). Button closure at neck. Permanent collar stays. Long tails stay tucked in. Long sleeves.  
**CARE:** Little or no ironing needed when machine washed at warm temperature and tumble dried.  
**SIZES, COLORS, ORDER INFO:** For average builds. Long sleeves proportioned to neck size. To order for women, see Chart 1 on page 659. Men's neck sizes XS(13½ in.); S(14-14½); M(15-15½); L(16-16½); XL(17-17½). Please state letter size XS, S, M, L or XL, not number size.  
 (5) 51 H 51728F—Blue floral  
 (6) 51 H 51729F—Brown floral  
 Shipping weight 9 ounces .....\$19.99

**ROEBUCKS**  
AUTHENTIC WESTERN WEAR

**EASY-CARE POLYESTER**

Items (1) thru (10)  
ALSO IN  
TALL AND BIG SIZES  
(Short-sleeve gingham  
not in tall sizes)



# GENUINE LEATHER COATS

Featuring soft, supple, hand-matched skins. Have yours with fur collar or zip-out lining . . . each available in 2 lengths



## (1 and 2) Detachable fur collar coats in two lengths

**LEATHER:** Smooth-grain cowhide skins, some imported. Acetate lining is quilted to batting of reprocessed wool and undetermined fibers-textile by-products. Sleeves not quilted.

**DETAILING:** Easy-fitting styles have detachable snap-on collar of American lamb fur dyed to look like raccoon. Extended flange detailing shapes front and back . . . forms side-entry pockets. Fur collar detaches to reveal notched collar. Self tie-belt. Sleeves have adjustable cuffs. Topstitching trim.

**CARE:** Leather clean.

**SIZES. COLORS. ORDERING INFO:** Determine size by BUST measurement only, see size chart page 359.

### (1) Coat-length style

Misses' sizes 8, 10, 12, 14, 16, 18. Coat about 44½ in. long. (Fits 5 ft. 3 in. to 5 ft. 6½ in.)

N 17 H 5600F—Cherry

N 17 H 5601F—Black

Please state size.

Shpg. wt. 4 lbs. 4 oz. . . . . \$225.00

Petite Misses' sizes 6P, 8P, 10P, 12P, 14P, 16P. Coat abt. 42 in. long. (Fits 5 ft. 2½ in. and under.)

N 17 H 5610F—Cherry

N 17 H 5611F—Black

Please state size.

Shpg. wt. 4 lbs. . . . . \$225.00

Tall Misses' sizes 12T, 14T, 16T, 18T, 20T. Coat abt. 46½ in. long. (Fits 5 ft. 7 in. to 5 ft. 11 in.)

N 17 H 5620F—Cherry

N 17 H 5621F—Black

Please state size.

Shpg. wt. 4 lbs. 6 oz. . . . . \$255.00

Half sizes 16½, 18½, 20½, 22½, 24½. Coat abt. 42 in. long. (Fits 5 ft. 4 in. and under.)

N 17 H 5630F—Cherry

N 17 H 5631F—Black

Please state size.

Shpg. wt. 4 lbs. 6 oz. . . . . \$255.00

### (2) Jacket-length style

Misses' sizes 8, 10, 12, 14, 16, 18. Coat about 29 in. long. (Fits 5 ft. 3 in. to 5 ft. 6½ in.)

N 17 H 5701F—Black

N 17 H 5700F—Cherry

Please state size.

Shpg. wt. 3 lbs. 8 oz. . . . . \$190.00

Tall Misses' sizes 12T, 14T, 16T, 18T, 20T. Coat about 31 in. long. (Fits 5 ft. 7 in. to 5 ft. 11 in.)

N 17 H 5721F—Black

N 17 H 5720F—Cherry

Please state size.

Shpg. wt. 3 lbs. 10 oz. . . . . \$220.00

Half sizes 16½, 18½, 20½, 22½, 24½. Coat abt. 29 in. long. (Fits 5 ft. 4 in. and under.)

N 17 H 5731F—Black

N 17 H 5730F—Cherry

Please state size.

Shpg. wt. 3 lbs. 10 oz. . . . . \$220.00

# SUIT-YOUR-SPORT™

Playful coordinates  
in terry and jersey knits  
with appeal outdoors or in.

**Wardrobe essential  
and low-priced**

*JUNIOR  
BAZAAR*



SHOWN ON OPPOSITE PAGE

(1 thru 4) FABRIC: All colors (except gray) of Creslan® acrylic and cotton knit. Gray fabric is a knit blend of Creslan® acrylic, cotton and rayon for added softness . . . all are fleeced inside for warmth, comfort and absorbency.

CARE: Machine wash, warm temperature; line dry or tumble dry.

**(1) Hooded Sweatshirt**

DETAILING: Front zipper closing; drawstring hood; two front handwarmer pockets; long sleeves. Wrists and bottom band are ribbed-knit. SIZES, COLORS, ORDER INFO: Determine size by BUST measurement only, chart on page 229.

Misses' sizes S(8-10); M(12-14); L(16-18).  
T 7 H 6419F—Royal blue  
T 7 H 6416F—Heather gray  
T 7 H 6417F—Fuchsia  
T 7 H 6418F—Bright red  
State S, M, L, Shpg. wt. 13 oz. . . . . \$12.00

**(2) Racing Shorts**

DETAILING: Pull-on style has an elasticized waistband. Rib-knit edge around curved leg openings. Length about 10 inches below waist.

SIZES, COLORS, ORDER INFO: Determine size by HIP measurement only, see chart on page 293. Misses' sizes S(8-10); M(12-14); L(16-18).  
T 7 H 6423F—Heather gray  
T 7 H 6425F—Bright red  
T 7 H 6426F—Royal blue  
T 7 H 6424F—Fuchsia  
State S, M, L, Shpg. wt. 5 oz. . . . . \$6.00

**(3) Crew-neck Sweatshirt**

DETAILING: Pullover style has long sleeves . . . gusset under arms gives freedom of movement. Rib-knit neck, wrists and bottom band.

SIZES, COLORS, ORDER INFO: Determine size by BUST measurement only, see chart on page 229. Misses' sizes S(8-10); M(12-14); L(16-18).  
T 7 H 6410F—Fuchsia  
T 7 H 6412F—Royal blue  
T 7 H 6411F—Bright red  
T 7 H 6409F—Heather gray  
State S, M, L, Shpg. wt. 10 oz. . . . . \$8.00

**(4) Sweatpants**

DETAILING: Pull-on style has an elasticized waistband. Rib-knit cuff at leg openings.

SIZES, COLORS, ORDER INFO: Determine size by HIP measurement only, see chart on page 293. Misses' sizes S(8-10); M(12-14); L(16-18).  
T 7 H 6403F—Fuchsia  
T 7 H 6405F—Royal blue  
T 7 H 6402F—Heather gray  
T 7 H 6404F—Bright red  
State S, M, L, Shpg. wt. 11 oz. . . . . \$10.00

SHOWN ON THIS PAGE

**(5) Reflective Jogging Suit**

FABRIC: Encron® Golden Touch® polyester . . . smooth, lustrous knit that's backed with polyester fleece on the inside for warmth and comfort.

DETAILING:

Jacket: Full zipper extends through collar . . . converts pointed collar to turtleneck. Long raglan-style sleeves with elasticized wrists; elasticized bottom. Reflective tape across shoulders extends down side of sleeves and across front.

Pants: Pull-on style; elasticized waistband. A small hidden pocket inside of waist holds keys or change. Straight legs have reflective tape down outer side seams . . . about 18 in. wide at hem.

CARE: Machine wash, warm; line or tumble dry.

SIZES, COLORS, ORDER INFO: Determine correct size by BUST and HIP measurements, see charts on pages 229 and 293.

Misses' sizes S(8-10); M(12-14); L(16-18).  
N 7 H 6651F—Bright red  
N 7 H 6648F—Medium blue  
N 7 H 6649F—Navy blue  
N 7 H 6650F—Bright green  
State S, M, L, Shpg. wt. 1 lb, 5 oz. . . . . \$38.00

**The Accessories**  
Shoes sold on page 513.



**JOGGING SUIT**  
Golden Touch® polyester knit . . . fashionably trimmed with reflective tape that helps you be seen in the dark by approaching motorist or cyclist



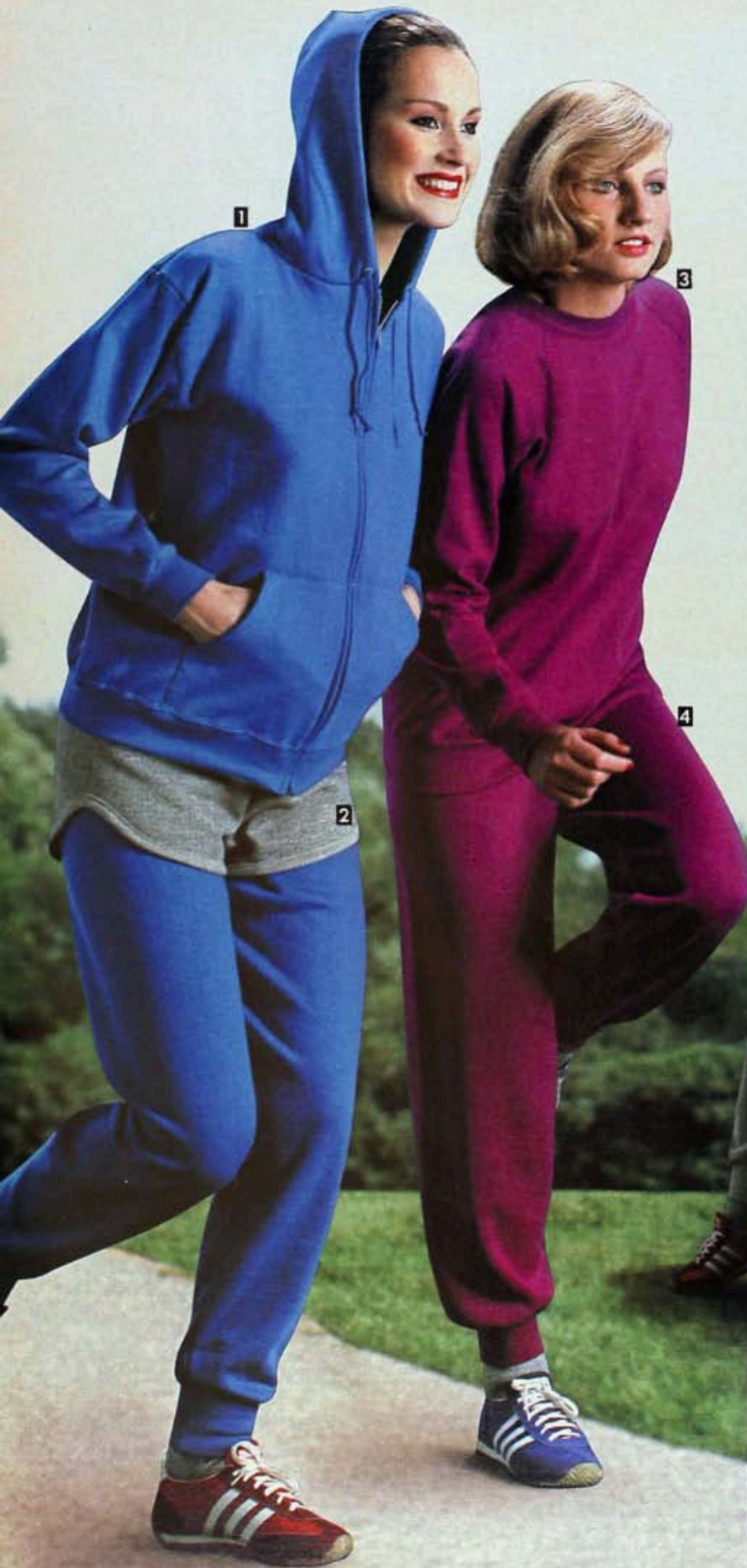
REFLECTIVE STRIPES AT NIGHT



FASHION STRIPES IN DAYLIGHT

# WARM-UP SPORTSWEAR

. . . soft, absorbent knits  
fleece lined inside for warmth and  
comfort . . . great for active  
or leisure wear



All warm-up separates  
available in 4 colors



texture . . .  
**VELOUR AND  
 GABARDINE**

**(1) Spliced Velour Top**  
 AVERAGE MISSES' SIZES

FABRIC: Luxurious velour knit of comfortable cotton and polyester has the smooth feel of velvet. Acrylic rib-knit trim.

DETAILING: Blouson pullover has crew neck and long, set-in sleeves. Front is spliced with wide diagonal band in contrasting color. Rib-knit neckline, cuffs and bottom band.

CARE: Machine wash, warm; tumble dry.

SIZES, COLORS, ORDERING INFORMATION: Determine the correct size by BUST measurement only, see size chart on page 264.

Average Misses' sizes S(8-10); M(12-14); L(16-18). Please state letter size S, M or L.

- T 7 H 7565F—Navy blue with red
- T 7 H 7566F—Brown with bright gold
- T 7 H 7568F—Camel tan with spruce green
- T 7 H 7567F—Gray with purple

Shipping weight 8 ounces . . . . . \$21.00

**(2) Two-way Stretch  
 Gabardine Jeans**

PETITE, AVERAGE AND  
 TALL MISSES' SIZES

FABRIC: Two-way stretch polyester gabardine.

DETAILING: Concealed elastic sewn in set-on waistband for smooth, comfortable fit. Zipper fly front with snap closing; five belt loops; back yoke. Two curved pockets and one watch pocket in front; two back patch pockets with topstitching. Straight legs measure about 17 inches wide at hem.

CARE: Machine wash, warm; tumble dry.

SIZES, COLORS, ORDERING INFORMATION: Determine the correct size by WAIST and HIP measurements only, see size chart on page 293.

Petite Misses' sizes 8, 10, 12, 14, 16. (Fit 5 feet 2½ inches and under.) Please state size.

- T 7 H 63797F—Dark navy blue
- T 7 H 63798F—Rust brown
- T 7 H 63799F—Hunter green
- T 7 H 63801F—Deep plum

Shipping weight 14 ounces . . . . . \$16.00

Average Misses' sizes 10, 12, 14, 16, 18, 20. (Fit 5 ft. 3 in. to 5 ft. 6½ in.) Please state size.

- T 7 H 63802F—Dark navy blue
- T 7 H 63803F—Rust brown
- T 7 H 63804F—Hunter green
- T 7 H 63805F—Deep plum

Shipping weight 14 ounces . . . . . \$16.00

Tall Misses' sizes 12, 14, 16, 18, 20. (Fit 5 ft. 7 in. to 5 ft. 11 in.) Please state size.

- T 7 H 63806F—Dark navy blue
- T 7 H 63807F—Rust brown
- T 7 H 63808F—Hunter green
- T 7 H 63809F—Deep plum

Shipping weight 15 ounces . . . . . \$17.00

**The Accessories**

Clogs sold on page 231. oxfords on page 309

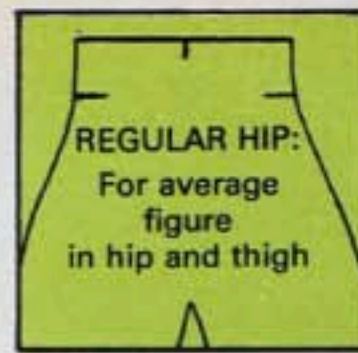


Back view

Front view

# Knit pants that fit

Each waist size comes in two different hip shapes to allow you to choose the most comfortable fit for you



A wardrobe essential and low priced at

**\$12** Petite, Average, Tall Misses' in regular hip sizes

FULL HIP SIZES AND WOMEN'S SIZES PRICED HIGHER

### HOW TO FIND YOUR PANTS SIZE:

- Measure waist at smallest part of natural waistline; then find waist size in Misses' or Women's size chart.
- Measure hips at fullest part . . . select your hip shape by reading down on chart until you find your measurement. If hip measurement is between sizes, select the smaller pants size for a snug, tight fit . . . select the next larger pants size for a more relaxed, comfortable fit.

#### Misses' sizes

PANTS SIZE	8	10	12	14	16	18	20	22
WAIST	24½-25	25½-26	26½-27½	28-29	29½-30½	31-32½	33-34½	35-36½
REGULAR HIP	35-36	36-37	37½-38½	39-40	40½-41½	42-43½	44-45½	46½-47½
FULL HIP	36½-37½	37½-38½	39-40	40½-41½	42-43	44-45	46-47	48-49

#### Women's sizes

PANTS SIZE	36	38	40	42	44	46
WAIST	31-32½	33-34½	35-37	37½-39½	40-42	42½-44½
REGULAR HIP	40½-41½	42½-43½	44½-45½	46½-47½	48½-49½	50½-51½
FULL HIP	42-43	44-45	46-47	48-49	50-51	52-53

### Knit Pants

**FABRIC:** Our finest double-knit fabric of Celanese Fortrel® polyester stretches for comfort and ease.

**DETAILING:** Pull-on style has non-roll elasticized waistband. Straight legs about 19 in. wide at hem.

**CARE:** PERMA-PREST® pants . . . machine wash, warm; tumble dry. (Wash burgundy with similar colors.) No ironing needed.

**SIZES, COLORS, ORD INFO:** Determine size by HIP measurement only; see chart above.

Petite Misses' sizes 8, 10, 12, 14, 16, 18. (Fit figures 5 feet 2½ inches and under.) *State size.*

Colors	Regular Hip	Full Hip
Medium blue . . . . .	7 H 1325F	7 H 1334F
Navy blue . . . . .	7 H 1327F	7 H 1336F
Dark brown . . . . .	7 H 1329F	7 H 1338F
Burgundy . . . . .	7 H 1328F	7 H 1337F
Black . . . . .	7 H 1326F	7 H 1335F
Shpg. wt. . . . .	13 oz.	13 oz.
Price . . . . .	\$12.00	\$13.00

Average Misses' sizes 10, 12, 14, 16, 18, 20. (Fit figures 5 feet 3 in. to 5 feet 6½ in.) *State size.*

Colors	Regular Hip	Full Hip
Medium blue . . . . .	7 H 1339F	7 H 1345F
Navy blue . . . . .	7 H 1341F	7 H 1347F
Dark brown . . . . .	7 H 1343F	7 H 1349F
Burgundy . . . . .	7 H 1342F	7 H 1348F
Black . . . . .	7 H 1340F	7 H 1346F
Shpg. wt. . . . .	14 oz.	14 oz.
Price . . . . .	\$12.00	\$13.00

Tall Misses' sizes 12, 14, 16, 18, 20, 22. (Fit figures 5 feet 7 in. to 5 feet 11 in.) *State size.*

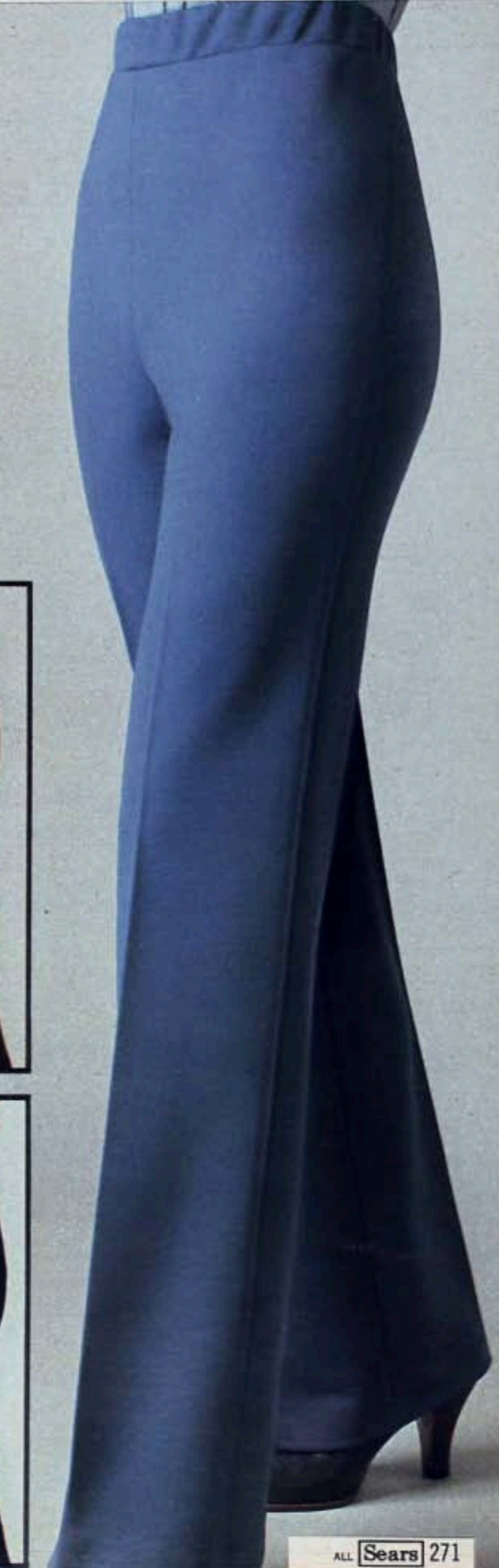
Colors	Regular Hip	Full Hip
Medium blue . . . . .	7 H 1350F	7 H 1356F
Navy blue . . . . .	7 H 1353F	7 H 1358F
Dark brown . . . . .	7 H 1355F	7 H 1361F
Burgundy . . . . .	7 H 1354F	7 H 1359F
Black . . . . .	7 H 1351F	7 H 1357F
Shpg. wt. . . . .	15 oz.	15 oz.
Price . . . . .	\$12.00	\$13.00

Women's Regular Hip sizes 34, 36, 38, 40, 42, 44.

Women's Full Hip sizes 36, 38, 40, 42, 44, 46.

(Fit figures 5 ft. 4½ in. to 5 ft. 6½ in.) *State size.*

Colors	Regular Hip	Full Hip
Medium blue . . . . .	7 H 1363F	7 H 1372F
Navy blue . . . . .	7 H 1369F	7 H 1374F
Dark brown . . . . .	7 H 1371F	7 H 1376F
Burgundy . . . . .	7 H 1370F	7 H 1375F
Black . . . . .	7 H 1366F	7 H 1373F
Shpg. wt. . . . .	1 lb.	1 lb.
Price . . . . .	\$14.00	\$15.00





texture . . .  
**QUILTED CORDUROY  
 AND DENIM**

**DETAILING:** Chinese-style jacket has mandarin collar and front toggle-button closure. Long, set-in sleeves have adjustable, fold-over cuffs. Two side-entry front pockets. Straight bottom.  
**CARE:** Professionally dry clean only.

**(1) Corduroy Jacket**  
 MISSES' SIZES

**FABRIC:** Jacket of cotton and polyester pinwale corduroy outershell and nylon tricot lining quilted to 100% polyester fiberfill batting.

**SIZES, COLORS, ORDERING INFO:** Determine correct size by BUST measurement only, see chart on page 264.

Misses' sizes 8, 10, 12, 14, 16, 18.  
 (Fit 5 ft. 3 in. to 5 ft. 6½ in.) *State size.*

N 7 H 3099F—Dark brown

N 7 H 3096F—Blue

N 7 H 3098F—Camel tan

Shipping weight 1 lb. 5 oz. . . . . \$30.00

**(2) Denim Jacket**  
 MISSES' AND WOMEN'S SIZES

**FABRIC:** Jacket of navy blue denim outershell and nylon tricot lining quilted to 100% polyester fiberfill batting. Misses' outershell of 100% cotton. Women's outershell of cotton and polyester.

**SIZES AND ORDERING INFORMATION:** Determine correct size by BUST measurement only, see chart on page 264.

Misses' sizes 8, 10, 12, 14, 16, 18.  
 (Fit 5 ft. 3 in. to 5 ft. 6½ in.) *State size.*

Shipping weight 1 pound 5 ounces.  
 N 7 H 3095F . . . . . \$28.00

Women's sizes 38, 40, 42, 44, 46.  
 (Fit 5 ft. 4½ in. to 5 ft. 6½ in.) *State size.*

Shipping weight 1 pound 7 ounces.  
 N 7 H 3103F . . . . . \$30.00



*"Charge It" if you wish . . .  
 see page 721 for details*

# smooth

## polyester knit shirts in prints and solid colors

FABRIC: Smooth interlock knit of 100% polyester.  
CARE: Machine wash, warm; tumble dry, low.  
SIZES: Chest sizes S(34-36 inches); M(38-40); L(42-44); XL(46-48); 2XL(50-52). See the Fitting Room, page 572 for who can wear regular and full cuts.

### (1 thru 3) Print Shirt

DETAIL: Full-button plain front with 3-in. banded collar. Color matched buttons. Hemmed square bottom. Long-sleeves have one button cuff.

SIZES, COLORS AND ORDERING INFORMATION: Regular fit for average builds.

Average sizes. State letter size S, M, L or XL not number size.

- (1) 41 H 79812F—Black print
- (2) 41 H 79811F—Navy print
- (3) 41 H 79813F—Brown print

Shipping weight 8 ounces ..... \$14.99

Tall sizes. 2 in. longer in body than average sizes. State letter size M, L, XL or 2XL not number size.

- (1) T 41 H 79815F—Black print
- (2) T 41 H 79814F—Navy print
- (3) T 41 H 79816F—Brown print

Shipping weight 9 ounces ..... \$16.99

### (4 thru 8) Solid-color Shirt with crochet trim

DETAILING: Full-button front shirt with contrasting crochet trim on placket and around open collar. Hemmed square bottom. Long-sleeves have two button cuffs. One front pocket. Imported.

SIZES, COLORS AND ORDERING INFORMATION:

Average sizes. Regular fit. State letter size S, M, L or XL; not number size.

- (4) 41 H 76661F—Ecru with brown trim
- (5) 41 H 76665F—Rust with ecru trim
- (6) 41 H 76662F—Brown with ecru trim
- (7) 41 H 76664F—Powder blue with white trim
- (8) 41 H 76663F—Navy with white trim

Shipping weight 8 ounces ..... \$12.99

Average size. Full fit. State letter size S, M, L, or XL; not number size.

- (4) 41 H 75551F—Ecru with brown trim
- (5) 41 H 75555F—Rust with ecru trim
- (6) 41 H 75552F—Brown with ecru trim
- (7) 41 H 75554F—Powder blue with white trim
- (8) 41 H 75553F—Navy with white trim

Shipping weight 8 ounces ..... \$13.99

Tall size. 2 in. longer in body than avg. sizes. State size M, L, XL or 2XL; not number size.

- (4) T 41 H 76671F—Ecru with brown trim
- (5) T 41 H 76675F—Rust with ecru trim
- (6) T 41 H 76672F—Brown with ecru trim
- (7) T 41 H 76674F—Powder blue with white trim
- (8) T 41 H 76673F—Navy with white trim

Shipping weight 9 ounces ..... \$14.99



ALSO IN  
TALL  
SIZES

