

BALTIMORE BARGAIN HOUSE

BALTIMORE, MARYLAND.

Our Catalogues are books of several hundred pages—this is simply a booklet of representative offers from our big stocks, sufficient for you to make up a test order.

Send for Our October Catalogue of Over 300 pages—Free to Merchants.

These Items Will Give You an Idea of How Much Less Money You Will Have To Pay Us for the Same Goods.

Men's Sack Suit of Dark Blue Wool Cassimere (See page B, Colored Sheet.)	per suit, \$3.25
Mennen's Borated Talcum Powder (See page 21.)	per doz., 1.35
Borden's "Tip-Top" Brand Caramels (See page C, Colored Sheet.)	per pound, .07 ³ / ₄
The Well Known "Clarendon" Quilts (See page 13.)	each, .87 ¹ / ₂
Men's Black Sateen Shop Caps (See page 3.)	per doz., .30
Men's and Boys' Plush Caps, double earbands (See page 3.)	per doz., 2.20
B. B. H. Special Guaranteed Watch (See page 20.)	each, .57 ¹ / ₂
"Columbia" Nickel Guaranteed Alarm Clock (See page 20.)	each, .47 ¹ / ₂
Carter's No. 85 Black Ink, 2-oz. cone (See page 22.)	per gross, 2.95
Plain Homespun Suitings (See page 10.)	per yard, .16 ¹ / ₂
Men's Fancy Percale Shirts (See page 8.)	per doz., 3.50
10-4 Bed Blankets (See page 9.)	per pair, .40
Ladies' Brown Hare Scarfs (See page 6.)	each, .95
"Baltimore" 10c Gray Enameled Ware Assortment (See page B, Colored Sheet.)	per doz., .89
Ladies' Black Patentine Belts (See page 13.)	per doz., 1.25
Imitation Bone Collar Buttons (See page 23.)	per gross, .14
Ladies' Wrist Bags (See page 24.)	per doz., 2.00
Single Faced Plush Lap Robes, all colors (See page 15.)	each, 1.15
Old Virginia Cheroots (See page 21.)	per 1000, 11.60

OUR 160-SWATCH BOOK OF FALL AND WINTER CLOTHING FREE TO MERCHANTS ON REQUEST.

We Will Prepay Freight on Your First Order

AND SHIP GOODS ON APPROVAL

with the distinct understanding that you may return them, in whole or in part, at our expense, within 5 days, if you are not satisfied and convinced that you have saved money on all that you have bought.

If you are entirely satisfied you can pay for the goods in 30 days.

Could any system be fairer, or broader, or more in your interests? It won't cost you anything to try us. We stand all the expense and assume all the risk.

Do You Sell Clothing?

If you do, you will be interested in knowing that all of our Clothing is made in our own factory, by our own organization, under splendid sanitary conditions. Our factory has plenty of light and air on all four sides—everything conduces to a good, reliable, trustworthy product, and we strictly guarantee that you will not find the equal of our Clothing, for cut, fit, style, material and workmanship, at so low a price as we ask.

Important Notice!

**FREIGHT CHARGES PREPAID
ON FIRST ORDER.**

WE are very anxious to win the first order from you—we'll admit that. We're so anxious that we're willing to rob the transaction of all profit, as far as we're concerned, and put into it even greater profit possibilities for you.

Make up an order from this Catalogue, and, if you've never bought here before, we'll prepay freight charges on it.

We're going to do our part to make you understand how much money-saving it means to buy from us at our always-lower prices for the same goods—we're going to bring a trial order of our goods right to your door, free of carrying charges, to let you get a real, proper conception of what splendid merchandise we offer at these underselling prices.

How to Open a Credit Account.

When mailing first order, mention names of wholesale houses with which you now have credit.

To Merchants Who Cannot Furnish References,

or who prefer to pay cash, we suggest that checks sent in payment, or as deposits on C. O. D., be certified, if possible, in order to hasten shipments. Permit us to remind you that the only safe ways of sending currency are by registered mail or express.

Should cash be sent in excess of your purchase, we will refund the balance.

If you need goods in special haste by express at mail rates, add charges at the rate of one cent per ounce.

Our Terms are Net Cash—30 Days

to merchants who furnish references. One price strictly to all—no deviation to anyone—and that price lower than other wholesalers. No discounts, no dating. These terms are part of our well defined system of saving money for our customers.

Wholesale—to Merchants Only.

If our Catalogue, by accident, should fall into the hands of a consumer, we would like to be informed so that we can guard against a repetition of the occurrence. Our Catalogues are never intentionally mailed to anyone but merchants. We sell only to merchants, only at wholesale, and under no circumstances will we sell goods to a consumer, let the order be ever so large.

SOME STRONG BANK ENDORSEMENTS.

MERCHANTS in general are fully cognizant of our responsibility for all statements and representations we make, but in order that those about to deal with us for the first time may be fully assured, we present herewith letters from conservative and important banks in Baltimore, and also refer, by permission, to the Park National Bank, and Mercantile National Bank, of New York City.

Capital,
\$1,000,000.

Surplus and Profits,
\$1,800,000.

CITIZENS NATIONAL BANK.

Baltimore, Md., Jan. 14, 1904.

To Whom it May Concern:

We are now, and have been, doing business with the Baltimore Bargain House for several years, and our experience with that house leads us to believe it to be fully responsible for any statement it may make. The last statement given to us by it indicates a net worth of one million dollars. We will take pleasure in saying that we believe it to be deserving of confidence.

Yours respectfully,

JOHN S. GIBBS, President.

Office of the

NATIONAL HOWARD BANK.

Baltimore, Md., Jan. 14, 1904.

To Whom it May Concern:

Our business relations with the Baltimore Bargain House for many years place us in a position to say that it is perfectly reliable and responsible for any representation it may make. Its last statement to us shows it to be worth over one million dollars. It is one of the largest and most progressive wholesale houses in the United States, and its extraordinary success is, no doubt, due to its honest dealings and its unusually low prices. We can recommend it to any dealer contemplating doing business with it.

Yours respectfully,

WM. H. ROBERTS, Cashier.

Capital, \$1,000,000.

Surplus, \$655,230

Office of the

NATIONAL EXCHANGE BANK.

Baltimore, Md., Jan. 14, 1904.

To Whom it May Concern:

The Baltimore Bargain House is now, and has been for some time, a depositor at our bank. We regard it as being a responsible and reliable wholesale house, and entitled to full confidence. Its last statement indicates a worth of over one million dollars.


Yours respectfully,

THE NATIONAL EXCHANGE

BANK OF BALTIMORE,

R. Vinton Lansdale, Cashier.

The
Winterthur
Library



Digitized by the Internet Archive
in 2010 with funding from
Lyrasis Members and Sloan Foundation

<http://www.archive.org/details/catalog00balt>

CLOTHING.

IMPORTANT INFORMATION.

Keep firmly in mind that elusive quality known as style, in buying Clothing. Think of it when comparing our goods with the products of other factories.

Our concave shoulder and close-fitting collar are important style features—our method of padding and staying the shoulders of our Coats make them more salable and more satisfactory to the wearer.

All Pants made by us have the continuous or French waistband—same as used by the best merchant-tailors.

SCALE OF SIZES.

Our Men's Suits are cut in sizes which years of calculation and experience have proved to be in greatest demand by the trade. All suits are, therefore, produced in the sizes and with the Pants mentioned in the following scale. Under no circumstances can we furnish different measurements. Suits in "extra sizes" will be found under a separate heading on another page.

Table of sizes showing range of Coats and Vests with the Pants that accompany them:

Coat and Vest.	Pants.	Coat and Vest.	Pants.
34.....	30-32, 31-31	33.....	34-34, 35-33
35.....	32-31, 31-32	36.....	36-32, 34-35
36.....	32-32, 32-33	39.....	36-34
	33-32	40.....	38-32, 38-33
37.....	33-33, 34-32	42.....	40-32, 40-33
	34-33, 33-34		

MEN'S SUITS.



86418E, \$3.00 Suit.

86407E — Sack suit of union cassimere, dark Oxford mixture, with broken stripes in green and gray alternating. Don't hesitate about ordering this number..per suit, \$2.35

86418E — Sack suit of cassimere, dark gray Oxford mixture, with very faint Nubymarn stripes in gold and olive, satin piped facings per suit, 3.00

Men's Suits—Continued.

86424E—Sack suit of wool cassimere, dark blue effect, having a visible mixture of garnet and olive, satin piped facings..suit, \$3.15

86428E — As above, in double-breasted sack suitper suit, 3.40

81503E — Sack suit of tricot long, dark Oxford mixture, surprisingly well made and trimmed. We have made preparations to sell thousands of this suit...per suit, 3.50

86478E—Sack suit of Scotch tweed cheviot, in seal brown, interwoven with combination mixture of strands of various colors and sizes; very stylish.....per suit, 4.50

86482E — As above, but double-breasted style.....per suit, 4.75

86562E—Sack suit of wool cheviot, in stunning tweed effect; the ground is black, while the mixture is gray and gold with medium-size mohair dots in garnet. Put it beside the drummer's \$6.50 number and the order will come to us.....per suit, 5.00

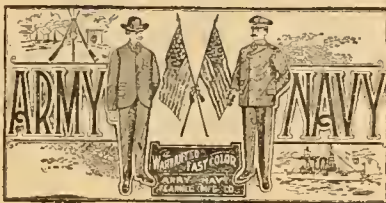
86552E—Sack suit of wool worsted, very rich and serviceable stripe pattern, dark ground, with neat blue, olive, and garnet stripes. No better suit is being sold under \$8.00..... per suit, 6.00

86585E—Sack suit of wool mercerized worsted, in black, interwoven with tiny silk threads in gray, and having a plaid in brown that is almost invisible. The five patterns represented here are all "winners," and are going to be the correct style this fall...per suit, 7.00

86623E -- Sack suit of all-wool worsted, brown mixture goods enlivened by a corded gray and black silk stripe and overlaid in olive.....per suit, 8.50

86638E — Sack suit of all-wool worsted, dark ground, having an overlaid of white, garnet, and blue twisted tereads that imparts distinction to it..... per suit, 9.50

MEN'S SUITS OF "ARMY AND NAVY" HEAVY FLANNEL.



Every suit of this splendid material is marked with a label which protects you and your customers. Where a blue uniform is required we cannot recommend these goods too highly for thoroughly satisfactory wear.

84560E—Round sack suit of "Army and Navy" indigo blue flannel, coat and vest made with eyelet holes and shank buttons, pockets reinforced; thorough tailoring marks every portion of this suit, per suit, 5.50

84561E—Same as above, in square-cut sack..... per suit, 5.50

84562E—Same as above, in double-breasted..... per suit, 6.00

YOUTHS' SUITS.

86318E—Sack suit of wool cassimere, in dark blue, having a visible stripe in garnet and olive, satin piped facings....per suit, \$2.90

MEN'S PANTS.

84100E — Fancy cotton worsted, black ground, with very prominent gray stripes.....per pair, .55

86117E—Fancy union cassimere, dark Oxford mixture, with broken stripes in green and gray alternating.....per pair, .75

84200E — Wool cassimere, dark ground, very stylish and salable stripe pattern; an unusual value, per pair, .85

86135E — Fancy cheviot, black ground, with a mixture of gray and brown threads.....per pair, 1.05

86142E—Wool cassimere, in deep dark blue, with an Oxford mixture, and having a visible mixture stripe of garnet and olive, pair, 1.05

86145E—Wool cassimere, in black, with an indistinct mixture stripe of garnet and olive. By our methods of manufacturing these cost you only.....per pair, 1.15



86167E, \$1.25 Pair.

86167E — Wool cassimere, black ground, intersected with numerous pin stripes in gray. Some manufacturers think them so good they ask \$2.00 for them; our price, per pair, 1.25

86189E — Fancy cheviot, Scotch tweed effect, having a mixture of black and gray woven so as to produce a neat black stripe; the pattern also has a tinge of olive, pair, 1.50

YOUTH'S PANTS.

86070E—Wool cassimere, in deep dark blue, with an Oxford mixture, and having a visible mixture stripe of garnet and olive...pair, .95

YOU CAN OFTEN LEAVE SELECTION OF GOODS TO US WITH PROFIT TO YOURSELF.

Walnut Bottom, Pa., June 1, '05.
Baltimore Bargain House:
Gentlemen—Goods arrived yesterday. Will say that they are all O. K. and are pleased with the entire lot. Thanks for your selection.

Yours truly,
ZINN & CO.

MEN'S OVERCOATS.

Sizes 34 to 42.

81866E—Overcoat of black beaver, made with velvet collar and trimmed with piped facings, cut full and roomy, length 42 inches; try to duplicate it at less than \$3.75; our bargain price.....each, \$2.75

81868E — Same as above, but in dark blue... ..each, 2.75

YOUTHS' OVERCOATS.

All our youths' overcoats are cut single-breasted.

81962E — Overcoat of dark blue beaver, velvet collar, lined with heavy twill.....each, 2.50

81963E — Same as above, but in black.....each, 2.50

BOYS' DOUBLE-BREADED SUITS.

All coats in children's suits are made with a stiff front properly worked, and will always retain their shape.

86709E — Double-breasted suit of good wash melton, dark brown goods, with a mixture of gray, enlivened by a broken overplaid in olive, ages 6 to 14....per suit, 1.05

86709XE—Same as above, ages 9 to 15.....per suit, 1.15

86725E — Double-breasted suit of cassimere, salt and pepper mixture goods, in dark olive, ages 8 to 16.....per suit, 1.35

86734E— Double-breasted suit of fancy cassimere, in dark brown Oxford mixture, having gold and gray stripes, ages 8 to 16....suit, 1.50

86755E— Double-breasted suit of wool cassimere, dark blue effect ground, having a visible threefold stripe of olive and garnet; ages 8 to 16.....suit, 1.65

86758E — Double-breasted suit of dark brown cassimere, tinged with olive and having alternate stripes of olive and gray. These goods make up into very manly suits for the little fellows; ages 8 to 16.....per suit, 1.75

86773E — Double-breasted suit of wool cassimere, in dark brown, spotted all over in olive and gray and having very faint green and garnet Nub yarns, ages 8 to 16, per suit, 2.00

86870E — Single-breasted 3-piece suit of wool cassimere, dark blue, with an Oxford mixture and having a threefold stripe—one in garnet and two in olive; ages 10 to 16, per suit, 2.15

Boys' Double-Breasted Suits—Cont'd.

86785E — Double-breasted suit of wool kersey, in black, with a corded stripe of self-color and broken pin stripes in gray and olive, ages 8 to 16....per suit, \$2.25



86793E, \$2.50 Suit.

86793E — Double-breasted suit of fancy wool cassimere, black ground, with garnet and gold mixture Nub yarn stripes alternating with a brown stripe, and overrunning this is a double stripe of olive, ages 9 to 16...per suit, 2.50

86852E — Round sack long pants suit of wool cassimere, in dark blue Oxford effect, having a visible mixture stripe of garnet and olive; ages 12 and 13 only....per suit, 2.65

CHILDREN'S BLOUSE SUITS.

86824E—Blouse suit of fancy wool cassimere, fine quality, in dark blue Oxford effect, and having a visible mixture stripe of garnet and olive, trimmed with black silk binding and narrow soutache braid on collar and down front, emblem embroidered on sleeve, and with patent leather belt; ages 4 to 8.....per suit, 1.75

KNEE PANTS.

84002E—Knee pants of union melton, in dark brown, with gray checks and red striped overplaid; ages 6 to 14.....per doz., 2.25

84002XE — Same as above, ages 9 to 15.....per doz., 2.50

86007E — Fancy wool cassimere, assorted patterns; ages 6 to 14, per doz., 3.50

86007XE—Same as above, ages 10 to 16.....per doz., 4.00

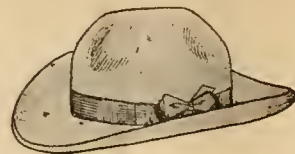
86012E—Knee pants of wool kersey, in black, with a corded stripe, having broken pinstripes, neatly assorted, ages 10 to 16, per doz., 6.00

PLEASED WITH OUR GOODS AND PRICES.

Camden, Ala., July 31, '05.

Baltimore Bargain House:
Gentlemen—I was highly pleased with your goods and more so with your prices. You can rest assured that when in need again you will hear from me. Yours truly,
R. L. HAWTHORNE.

HATS and CAPS.



68772E—Stylish pan dip shape for men, made of wool felt, in black, per doz., \$4.00

68773E—Same shape as above, but in brown.....per doz., 4.00

THE STRONGEST DOLLAR HAT MADE.



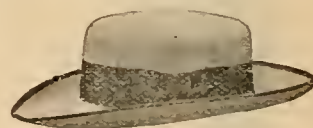
68440E—Men's Saxony wool felt hat, "Anchor" brand, in black, 6 1/4-inch crown, 4-inch black flat raw edge brim, sizes 6 3/8 to 7 1/2, 1/2 dozen in box; mention sizes wanted when ordering, per doz., \$7.90

68441E—Same as above, but in light tan.....per doz., \$7.90

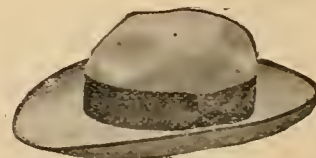


62170E—Men's black fur felt dress shape, 1/2 dozen to box, sizes 6 3/4 to 7 1/4.....per doz., 7.90

62171E—Same shape as above, but in brown.....per doz., 7.90



62195E—The "Port" shape, in black or brown; please mention color wanted when ordering, per doz., 10.50



62174E—The "Spaulding," a new design, very nobby shape, black and gray.....per doz., 13.50



86734E, \$1.50 Suit.

visible threefold stripe of olive and garnet; ages 8 to 16.....suit, 1.65

**New Fall Styles in the
"WALDORF-AMERICAN"
SOFT HATS.**

One in box.

A reproduction of Stetson's Broadway shape, the leader of all popular priced hats. We challenge comparison with the average \$13.50 grade sold by exclusive houses. We are anxious to submit sample for comparison, if you'll write for it. Sizes 6¾ to 7¾.



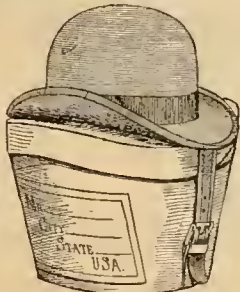
- 62220E — "Waldorf," in black, per doz., \$10.50
- 62221E—As above, but in brown, per doz., 10.50
- 62225E—As above, but in silver gray..... per doz., 10.50
- 62225SE—As above, but in steel, per doz., 10.50



- 62226E — The "Portsmouth," in black, a very smart hat for young and middle-aged men, issued in September, 6¾ to 7¾, per doz., 10.50
- 62227E—Same as above, in Russian tan color..... per doz., 10.50
- 62228E—Same shape as above, in Japo gray.....per doz., 10.50

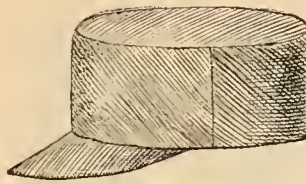
**A New Feature—
A TRAVELING HAT CASE
Free With Each Hat.**

Has neat label on each box for your customer's name and address.

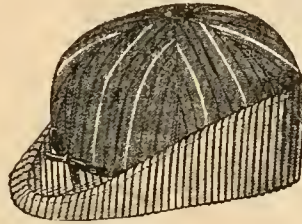


- 61267E — The English derby for men, in black, 5½-inch crown, 2½-inch brim, a proportion that will look well on the average built man; every hat packed in a traveling hat case; sizes 6¾ to 7¾..... per doz., \$11.00
- 61268E—Same shape as above, but in London brown, per doz., \$11.00

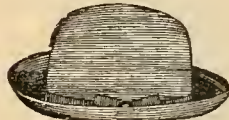
GAPS.



- 69688E—Black sateen shop caps for men, 2 dozen to box, sizes 6¾ to 7¾.....per doz., \$0.30

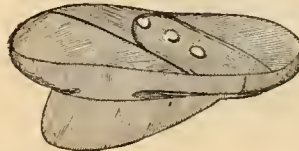


- 64500E—Men's and boys' Windsor shape winter cap, sliding earband; state whether men's or boys' sizes are wanted.....per doz., .85



68801E, \$1.25 Doz.

- 6 8 8 0 1 E—Boys' or youths' black wool (Italian) crush hats, per doz., 1.25



- 61339E — Men's and boys' fancy yacht caps, made of all-wool cassimere, satin lined, black leatherette bill; when ordering, state whether men's or boys' are wanted..... per doz., 1.85



- 64524E—Men's Klondike shape, made of corduroy, inside carband, per doz., 1.95

- 64426E—Same style as above, but in boys', per doz., 1.95



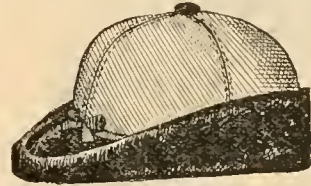
- 69624E — The "Pawtucket" golf shape for men, made of brown and olive fancy cheviot, goods that are generally put in \$4.00 grades, no less than dozen sold, per doz., 2.00

- 69988E—Same as above, but in boys' sizes.....per doz., 2.00

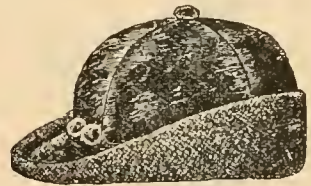
Gaps—Continued.



- 61790E—Children's patent leather Tam caps, right up to date, per doz., \$2.00



- 64518E — Kersey and beaver caps for men, made of odd and end pieces, cloths that were used for \$3.50 and \$4.00 grades, double padded velvet earbands, 1 dozen to box, sizes 6¾ to 7¾, per doz., 2.10
- 64435E—As above, but in boys', per doz., 2.10



- 64528E — Men's and Boys' plush caps, combination double earbands. State whether men's or boys' sizes are wanted when ordering.....per doz., 2.20



- 61789E—The "Polly Jones" cap, for misses and girls, made of Ottoman silk, assorted colors; this shape is something entirely different from anything ever shown and will create large sales for you, per doz., 4.00



- 61390E—The "Komura" cap, for men, made of brown mixture cassimere; this is an entirely new block, and made with French canvas frame—not pasteboard; warranted to retain its shape; it's a cap that's made much better than the average \$4.50 grade, ½ dozen in box..... per doz., 4.00
- 61398E—Same as above, in blue, per doz., 4.00

SHOES.

MEN'S SHOES.



B4105E—Men's first quality heavy split Bals., solid, standard screw, tap sole, sizes 6 to 12; big value; per pair, **\$1.00**



B2901E—Men's tiger calf Bals., perforated vamp, all solid, with sole leather counter, London toe tip, sizes 6 to 11; on this shoe we save you 15c a pair.....per pair, **1.00**



B3000E—Men's patent leather Blucher Bals.; right down to the minute for style; sizes 6 to 11, per pair, **1.30**

Men's Shoes—Continued.



B3600E, \$1.60 Pair. **B3606E**, \$1.60 Pair.
B3600E—Men's guaranteed patent colt Blucher Bals.; one of the plums of our "Expansion" line; sizes 6 to 11.....per pair, **\$1.60**

B3606E—Men's velour calf Blucher Bals.; another plum from the celebrated "Expansion" line; sizes 6 to 10.....per pair, **1.60**



B3812E, \$1.60 Pair.

B3812E—Men's kangaroo grain Blucher, extra high cut; big value; sizes 6 to 11....per pair, **1.60**



B2700E—Men's guaranteed patent colt Blucher Bals., heavy sole, Goodyear hand-sewed, dull mat calf top; very swell; sizes 5 to 10....per pair, **2.10**

B2700E, \$2.10 Pair.

BOYS' SHOES.



B3206E—Boys' satin calf Bals., solid, sizes 3 to 5½....per pair, **.87½**

B3207E—Same as B3206E, in sizes 13 to 2½.....per pair, **.85**

LADIES' SHOES.



B1600E—Women's kangaroo grain tip polish, solid; enough said; sizes 3 to 8.....per pair, **\$0.80**

B1505E—Women's kangaroo grain Blucher polish, all solid leather, patent leather tip; sizes 3 to 8, per pair, **1.00**



B900E—Women's vici kid polish, ¼ fox, patent tip, solid leather; our guarantee for service with every pair; sizes 2½ to 8.....per pair, **1.00**



B918E—Women's vici kid polish, patent leather tip; the "Dolly Bloomer" shoe, guaranteed for service; sizes 2½ to 8...per pair, **1.20**

B910E—Women's patent colt Blucher polish; one of our "Peggy Stewart" plums; sizes 2½ to 8, per pair, **1.25**

SAVED 25 PER CENT. BY BUYING HIS SHOES HERE.

Detroit, Ky., July 17, '05.
Baltimore Bargain House :

Gentlemen—Your shoes were the best values I ever handled. I figure I saved 25c on each pair by buying from you. Yours truly,

J. W. HUTCHINSON.

PRAISES OUR SHOE BARGAINS.

Halewood, N. C., July 24, '05.
Baltimore Bargain House :

Gentlemen—Received our shoes from you and really believe they are the best bargains we ever saw. We are more than pleased with them.

Yours truly,
SILVER BROS.

LADIES' PATTERN HATS.

One hat to box.



M150E—Hand-made velvet hat, rolled brim, draped with shirred silk and trimmed with colored fancy bird, velvet straps at back, finished with small gilt buckle; colors: black, brown, navy, castor, and reseda.....each, \$1.50



M100E—Large hand-made turban, rolled high on side, drooped back, of velvet and fancy braid, trimmed with hackle-breast and finished with small gilt ornaments; colors: black, brown, navy, cardinal, and green.....each, 2.00



M206E—Stylish hand-made turban, of velvet and fancy braid, trimmed with lace medallions, steel ornament and fancy feather; colors: black, brown, navy, and green.....each, 2.50

Ladies' Pattern Hats—Continued.



M603E—Polo turban, entirely new, made of silk velvet, fancy crown finished with silk covered buttons, trimmed at side with hackle-breast pompon, entire edge of brim made of tucked silk; colors: black, brown, navy, and cardinal, each, \$3.00



M1600E—Continental turban, entirely new, made of paon velvet and shirred silk, edge of brim made of fancy silk chenille, trimmed high on side with large colored wings; colors: black, brown, and navy.....each, 3.50



M1000E—Paon silk velvet hat, large shape, turned up high at back, crown draped with paon velvet in contrasting shade and trimmed with large fancy feather, back of hat trimmed with silk ribbon bow and small steel ornament, one of the best shapes of the season; colors: black, brown, navy, and green.....each, 4.50

LADIES' JACKETS.

Sizes 32 to 42.



3505E, \$1.80 Each.



3509E, \$2.10 Each.

ished with 5 rows of stitching; colors: black, brown, and navy...each, \$2.10



3525E, \$3.25 Each.

with mercerized lining; colors: black and castoreach, \$3.25

3505E—24 inches long, double-breasted front, tight fitting back, imitation collar finished with velvet piping and 4 rows of narrow braid, cloth facing, bound seams, black only, each, \$1.80

3509E—25 inches long, nice quality beaver jacket, imitation collar trimmed with 2 rows of stitching and black piping, fitted back finished with belt, plain sleeves, double-breasted front, wide cloth facing, entire bottom finished with 5 rows of stitching; colors: black, brown, and navy...each, \$2.10

3525E—24 inches long, made of nice quality kersey, imitation collar finished with 4 rows of stitching, double-breasted front, semi-fitted back, turnover cuffs, bottom of garment finished with 3 rows of stitching, lined throughout with mercerized lining; colors: black and castoreach, \$3.25

MR. FLEETWOOD ENDORSES OUR MOTTO.

Cannon, Del., April 14, '05.
Baltimore Bargain House:
Gentlemen—I am glad to say that your goods opened up all O. K., and I think your house is the place to go to get "More Goods for Same Money and Same Goods for Less Money." You will receive the largest part of my patronage.
Yours truly, R. J. FLEETWOOD.

Ladies' Jackets—Continued.



3539E, \$4.20 Each.



3546E, \$5.50 Each.



3554E, \$7.50 Each.
with satin; tan only.....each, \$7.50

3539E—24 inches long, made of good quality kersey, double-breasted front, semi-fitted back, trimmed with cloth straps across shoulder, plain sleeves with turnover cuffs, lined with mercerized lining, tan only each, **\$4.20**

3546E— $\frac{3}{4}$ jacket, 36 inches long, made of good quality black kersey, semi-fitted back, trimmed with 3 wide kersey straps, double-breasted front, side pockets, newsleeves, lined to waist with good mercerized lining; black only, each, **\$5.50**

3554E— $\frac{3}{4}$ coat 42 inches long, made of fine quality kersey, imitation collar trimmed with velvet and narrow braid, double-breasted front, semi-fitted back trimmed with belt, 3 small kersey straps across shoulder, side pockets, new plaited sleeves trimmed with velvet at cuffs, yoke lined with satin; tan only.....each, **\$7.50**

FUR SCARFS.



3634E, 95c Each.



3641E, \$1.50 Each.



3653E, \$2.25 Each.



3658E, \$3.00 Each.

3634E—Brown hare scarf, trimmed with 3 fur tails on each end, fastened at neck with hook and chain, each, **95c**

3641E—Necktie scarf of good quality black French coney fur, lined with black satin, trimmed at ends with chenille fringe, fastened with hook and eye, each, **\$1.50**

3653E—Blended muskrat scarf, flat necktie shape, lined with brown satin, fastened at neck with hook and eye, chenille fringe at ends... each, **\$2.25**

3658E—Fancy shape necktie scarf of good quality blended muskrat, finished with 2 brown stripes, fastens at neck with hook and eye, trimmed with chenille ornament, tabs lined with good brown satin, finished at ends with chenille fringe, each, **\$3.00**



3646E, \$1.75 Each.

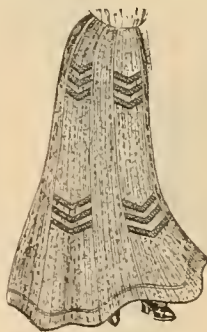
3646E—Fancy necktie scarf of good black sheared coney fur with 2 rows of white coney insertion at ends, lined with good black satin, fastened at neck with hook and eye, each, **\$1.75**



3660E, \$3.75 Each.

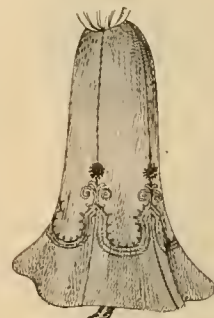
3660E—Gray squirrel scarf, flat necktie shape, lined with good quality gray satin, fastens at neck with hook and eye, tabs trimmed with chenille fringe, each, **\$3.75**

LADIES' DRESS SKIRTS. Waist, 24 to 28 inches; length, 39 to 44 inches.



[3403E, 90c Each.

3403E—Fancy striped skirting, full width, inverted plait back, double stitched seams, front and side gores trimmed at bottom and top with 3 rows of black braid; assorted striped patterns, each, **90c**



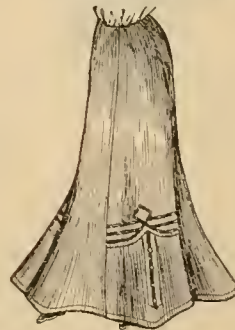
3410E, \$1.25 Each.

3410E—Walking skirt, medium weight skirting, full width, inverted plait back, entire body neatly embroidered and trimmed with 3 rows of cording, double stitched seams; Oxford only, each, **\$1.25**



3409E, \$1.08 Each.

3409E—Nice quality skirting, full width, inverted plait back, seams doubled, trimmed at bottom with small plaits and straps, light gray only, each, **\$1.08**



3414E, \$1.50 Each.

3414E—Good quality melton, full width, inverted plait back, sides trimmed with cloth straps and 3 narrow sateen straps in neat design, seams double stitched, black and navy only, each, **\$1.50**

Lytle, Ala., July 5, '05.
Baltimore Bargain House:
Gentlemen—Your goods and prices were all O. K. Thanking you for your prompt shipment, we remain
Yours respectfully,
DUNN & HANKS.

Ladies' Dress Skirts—Continued.



3424E, \$1.75 Each.



3434E, \$2.25 Each.



3446E, \$2.90 Each.



3452E, \$3.50 Each.

3424E—Walking skirt, of medium weight skirting, good quality, full width, flare bottom, front finished with 4 plaits on each side, bound seams, well made and perfect fit, Oxford and cadet, each, **\$1.75**

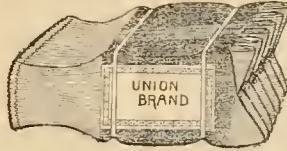
3434E—Walking skirt, of good quality striped skirting, full width, inverted plait back, gores trimmed with covered buttons and cording and finished with plaits at bottom, seams double stitched, very showy; blue and brown striped patterns, each, **\$2.25**

3446E—All-wool serge, full width, inverted plait back, 27-gore, each gore finished with small plait at bottom, bound seams, strictly tailor made; black, navy and brown, each, **\$2.90**

3452E—Walking skirt of fine quality serge, full width, inverted plait back, front and sides trimmed with covered buttons and finished with small plaits, strictly tailor made, black only, each, **\$3.50**

HOSIERY.

MEN'S GRAY MIXED HALF HOSE.
1 dozen to bundle, assorted sizes.



5950E—Blue and white mixed, full seamless heel, patent toe and white ribbed top.... per doz., **\$0.40**
5705E—Assorted blue and brown mixed, weight 2½ pounds to dozen, seamless, white heels, toes, and tops; the heaviest 75c sock on the market.... per doz., **.75**

MEN'S BLACK HALF HOSE.
Sizes 9½ to 11½.



5109E—Knit in fine gauge, good weight, ribbed top, seamless foot, 1 dozen in bundle..per doz., **.40**

5118E—2-thread 140-needle knit, ribbed top, 3-thread heel and toe, 1 dozen in box....per doz., **.75**

5130E—Superior Maco yarn, lisle finish, guaranteed 2-thread, 176-needle knit, fine gauge, corrugated heel which insures a wide instep, 1 dozen in box..per doz., **1.15**

MEN'S FANCY HALF HOSE.
Sizes 9½ to 11.



5300-2E, 65c Doz.



5202-1E, 75c Doz.

5200-2E—Blue, red, and slate ground, with black figures, patent toe, sewed on ribbed top, 1 dozen in box....per doz., **.65**

5202-1E—Blue and red ground, with white and black figures, seamless foot and knit top, 1 dozen in box....per doz., **.75**

5207E—Tan color ground, with red, white, and blue silk embroidered zigzag stripes, seamless, 1 dozen in box....per doz., **.85**

5260-8E—Yale blue ground, with red and white cross stripes, extra fine gauge, no seams, fine rib top, 1 dozen in box....per doz., **1.15**

5745E—Fast black ground, with burnt orange, sage green, and purple silk embroidered stripes, double sole, extra fine gauge, no seams, ½ dozen in box, per doz., **2.10**

LADIES' FAST BLACK HOSE.

Sizes 8 to 9½.

5354E—Fast black, seamless heel, patent toe.....per doz., **\$0.45**
5605E—Fast black, weight 1½ pounds to dozen. seamless, double heel and toe, elastic welt, 1 dozen in box, per doz., **.63**



510E, 75c Doz.

5385E—The celebrated Burson "No-Seam" hose, fast black, fine gauge, elastic leg and top, 1 dozen in box.....per doz., **1.35**

5389E—Fine gauge Burson "No-Seam" hose, Vicuna fast black, no seams, high spliced heel and toe, double sole, wide welt, 1 dozen in box....per doz., **2.60**

LADIES' FANCY HOSE.

1 dozen in box, sizes 8 to 9½.

5472E—Seamless fancy hose, white dots and dashes on black ground, Vicuna stainless dye.... per doz., **.75**

5482E—Seamless fancy hose, white diamond figures and dots on red, blue and tan ground, fine gauge, per doz., **.85**

5502E—Seamless fancy hose, white figure patterns on fast black ground, extra fine gauge, wide welt, stainless dye, per doz., **1.15**

BOYS' AND GIRLS' BLACK RIB HOSE.

503E—Fine rib, elastic wide welt top, full length, 1 dozen of a size in box.

Sizes. Per doz.	Sizes. Per doz.	Sizes. Per doz.
6 ... \$0.38	7½ ... \$0.44	9 ... \$0.50
6½40	846	9½52
742	8½48	

By the round—1 dozen each size, 6 to 9½..... per doz., **.45**

5618E—Warranted 2-thread lisle finish, full seamless, fine rib, plain foot, spliced heel and toe, unexcelled for wear, 1 dozen of a size in box.

Sizes. Per doz.	Sizes.
5 ... \$0.52½	7½77½
5½57½	882½
662½	8½87½
6½67½	992½
772½	9½97½

By the round—1 dozen each size, 5 to 9½, per doz., **.75**

5613E.

VERY MUCH PLEASED.

Jasper, Fla., March 21, '05.

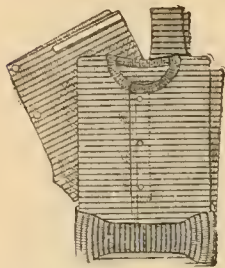
Baltimore Bargain House:

Gentlemen—I am very much pleased with the goods I am just opening up from your house. The quality of the goods is right, and the prices are also right. I will give you more orders soon. Yours truly,

H. M. TULIN.

MEN'S FALL AND

WINTER UNDERWEAR.



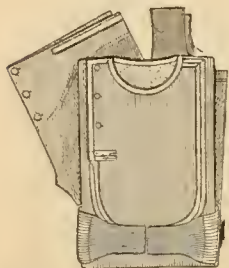
5101E, \$2.25 Doz.

5101E—Pink and white striped ribbed undershirts, splendid weight for winter wear, 1 dozen in box, assorted sizes.....per doz., \$2.25

5101E—Drawers to match...doz., 2.25

5231E—Extra heavy fleece lined undershirts, covered seams, pearl buttons, the kind drummers charge \$4.50 per dozen for. We have this grade in the following colors: tan, gray mixed, blue mixed; please state color preferred; ½ dozen in box, sizes 34 to 46, per doz., 4.20

5231E—Drawers to match...doz., 4.20



5162E, \$4.37½ Doz.

5162E—Extra heavy double-breasted and double back fleece lined undershirts, our celebrated "Linden Mills" make, in tan, gray mixed, and blue mixed; state color wanted, ½ dozen in box, sizes 34 to 46...per doz., 4.37½

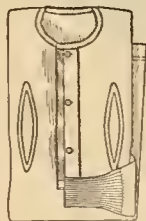
5162E—Drawers to match...doz., 4.00

LADIES' FALL AND

WINTER UNDERWEAR.



519E, \$2.25 Doz.



5277E, \$4.00 Doz.

518E—Cotton ribbed vests, fall weight, high taped neck and long sleeves, 1 dozen in box, sizes 4, 5 and 6.....per doz., 2.00

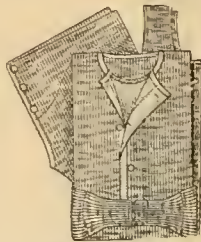
519E—Cotton ribbed vests, unbleached, weight 7¼ to 8 lbs. to dozen, fleeced, shaped at waist, rib tail, pearl buttons, 1 dozen in box, sizes 4, 5 and 6; the best 25c vest on the market....per doz., 2.25

519E—Pants to match...per doz., 2.25

5277E—Extra heavy pure bleached vests, velvet fleece lined, silk finish, pearl buttons, ½ dozen in box, sizes 32 to 42. We also have this grade in tan and gray mixed; state color wanted....per doz., 4.00

5277E—Pants to match, per doz., 4.00

BOYS' FLEECE LINED UNDERWEAR.



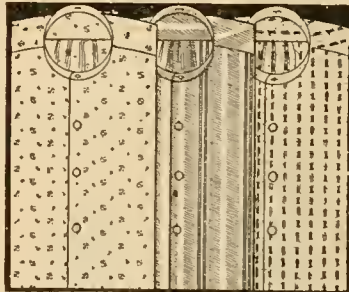
5272E—Extra heavy, white fleece lined, bound neck and front, covered seams, pearl buttons. We have this grade in tan, blue mixed, gray mixed,

and corn color; please state color wanted, ½ dozen in box, sizes 24 to 34.....per doz., \$2.10

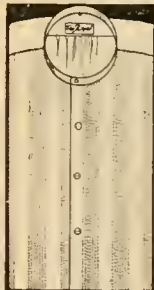
5272E—Drawers to match...doz., 2.10

MEN'S NEGLIGE SHIRTS.

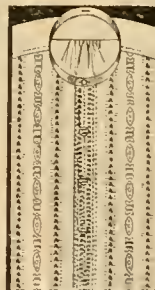
Sizes 14 to 17.



5006E—Fancy percale and madras stripes and figures on white and medium dark backgrounds, new designs, self-neckband, gathered back with yoke, pearl buttons, ½ dozen in box.....per doz., 3.50



5015E, \$3.00 Doz.



5020E, \$4.25 Doz.

5015E—White mercerized bosom, white striped, plain white body, soft laundered, pearl buttons, yoke, gathered back, ½ dozen in box, excellent value....per doz., 3.00

5020E—Fancy striped mercerized bosom, plain white muslin body, perfect make, ½ dozen in box, assorted sizes only, per doz., 4.25



5282E, \$4.25 Doz.

5282E—Fancy striped chambray, white stripes and figures on blue ground, splendidly made, detached cuffs, ½ dozen in box, solid and assorted sizes, per doz., 4.25

MEN'S KNIT OVERSHIRTS.



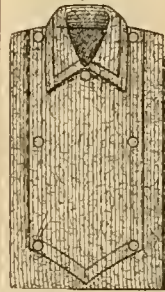
5900E, \$3.00 Doz.



5907E, \$4.00 Doz.

5900E—Heavy weight Jersey knit, blue and white striped pattern, attached collar and cuffs, button front, 1 dozen in package, sizes 14½ to 17.....per doz., \$3.00

5907E—Extra heavy Jersey knit, warm fleece lined, navy blue color, attached collar and cuffs, 1 pocket, button front, ½ dozen in box, sizes 14½ to 17....per doz., 4.00



5914DE, \$4.50 Doz.

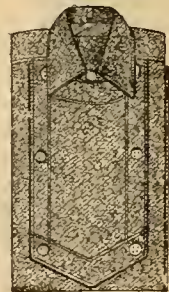
5914DE—Double breasted Jersey knit, navy blue color, heavy fleece lined, attached collar and cuffs, button front, ½ dozen in box, sizes 14½ to 17, per doz., 4.50

MEN'S BLUE FLANNEL

OVERSHIRTS.



5401E, \$6.00 Doz.



5421E, \$8.25 Doz.

5401E—Single-breasted, heavy navy blue flannel, attached collar and cuffs, pearl buttons, 1 dozen in bundle, assorted sizes 14½ to 17.....per doz., 6.00

5421E—Double breasted, all-wool navy blue flannel, yoke, large pearl buttons, extended neck-piece, lined collar, ½ dozen in box, assorted sizes 14½ to 17, per doz., 8.25

5409E—Single-breasted, all-wool royal blue flannel, yoke, pocket, pearl buttons on front and points of collar, felled seams, gusseted, ½ dozen in box, assorted sizes, per doz., 8.50

PRAISES OUR SHIRTS.

Middletown, Pa., Aug. 14, '05. Baltimore Bargain House:

Gentlemen—I have found the prices of your merchandise very reasonable, styles up to date and delivery of goods very prompt. Your "Royal" and "Gold Medal" shirts are simply elegant, and they sell like "hot cakes."

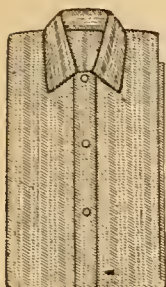
Yours respectfully,
R. FRIEDMAN.

An Extra Special Bargain in BOYS' SHIRTS.

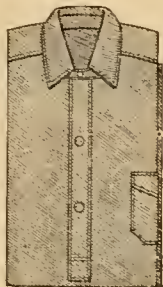
5430E—Fancy striped percale negligee shirts, good patterns, yoke, gathered back, pearl buttons, 1 dozen in box, sizes 12½, 13, 13½, and 14; the best value ever offered to retail at 25c or 30c; doz., \$2.25

MEN'S WORKSHIRTS.

1 dozen in package, assorted sizes 14½ to 17.



5505E, \$2.00 Doz.



5531E, \$3.50 Doz.

5505E—Cheviot workshirts, attached collar and cuffs, dark stripe patterns that will not show dirt.....per doz., \$2.00

5531E—Plain blue chambray workshirts, attached collar and cuffs, pocket, well made; the best blue chambray shirt ever offered at the price.....per doz., 3.50

MEN'S BLACK AND WHITE STRIPE WORKSHIRTS.



5586E—Heavy standard drill, attached collar and cuffs, yoke, pocket, extended neckpiece, double stitched and gusseted, curved armholes; these shirts are full size, 1 dozen in bundle, assorted sizes 14½ to 17, per doz., \$4.00

MEN'S AND BOYS' SWEATERS.



5608E, \$4.20 Doz.

5608E — Very heavy sweater for men, in navy blue and red striped pattern, striped collar, ½ dozen in box, sizes 36 to 44, per doz., 4.20

5679E— Same as 5608E, but in boy's, sizes 28 to 34, per doz., 3.85

BED BLANKETS.

When ordering, please state color wanted.



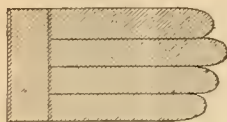
500E—10-4, size 46x72, weight 1½ pounds, heavy striped borders; colors: white, gray, and tan, pair, .40

5128E—11-4, size 64x78, weight 3 pounds, well fleeced, wide striped borders; colors: white, gray, and tan.....per pair, .80

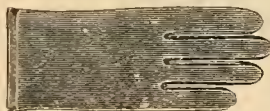
5130E—11-4, size 64x78, weight 4 pounds, heavy fleece, wide blue and red striped borders; colors: white, gray, and tan...per pair, 1.00

MEN'S GLOVES.

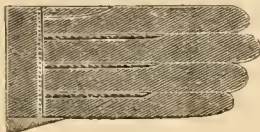
1 dozen in box, assorted sizes.



5512E—Heavy Canton flannel or canvas gloves, well made.....per doz., \$0.70



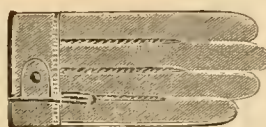
580E—Black Jersey knit gloves, warm fleece lined; the best glove ever offered to sell at 10c or 15c; per doz., .85



503E—Unlined mule skin gloves, wide cuff, string fastener....per doz., 2.25



507E—Heavy fleece lined calf skin gloves, warranted chrome tan fireproof, extra well made, string fastener, per doz., 4.00



557CE—Gray unlined hogskin gloves, storm-proof, wide band with string fastener on wrist, splendidly made and large sizes.....per doz., 4.00

MEN'S LEATHER GAUNTLETS.



571E—Gray unlined muleskin gauntlets, wide cuff and an excellent cheap glove.....per doz., 2.25

5225E—Heavy fleece lined calf skin gauntlets, warranted chrome tan fireproof, wide cuffs, splendidly made and one of our best sellers, per doz., 4.00

BED COMFORTS.



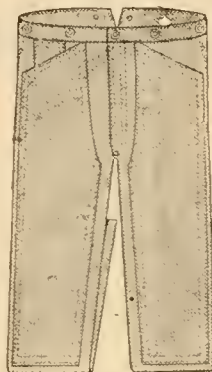
5300E—Single bed size, 40x69, fancy patterns on both sides, wool filling, straight quilted, weight 47 to 49 pounds.....per doz., 4.25

5302E—Double bed size, 53x78, wool filling, fancy floral patterns, straight quilted, weight 73 to 75 pounds.....per doz., 6.00

5306E—Double bed size, 67x75, assorted chrysanthemum pattern on both sides, dark wool filling, straight quilted, weight 89 to 91 pounds.....per doz., 9.00

OVERALLS AND JUMPERS.

The following numbers of men's overalls are made of heavy standard denims and duck; full sizes, patented buttons, felled seams, and are, without question, the best value ever offered at the prices; packed 1 dozen in bundle, assorted sizes 34 to 42. We do not break dozens.

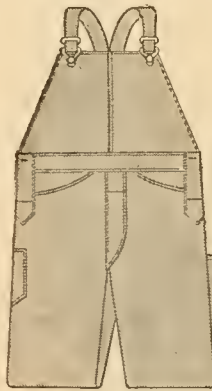


Double Knee Band Overalls.

595E—Double knee band overalls of blue denim, 4 pockets, per doz., \$4.25

540E—Black duck, double knee band overalls, 4 pockets, per doz., 4.25

5805AE—Apron overall, blue and white hickory stripe, 5 pockets, per doz., 4.25



Men's Apron Overalls.

5837AE—Apron overall of brown cckr duck, 5 pockets, per doz., 4.25

5836AE—Apron overall of black duck, 5 pockets, per doz., 4.25

507AE—Apron overall of 260 blue denim, 3 pockets; the best seller in our line.....per doz., 4.50

504AE—Apron overall of blue denim, 5 pockets, "Union Made," doz., 5.75

5690E—Norfolk and Western Railroad apron overall of blue denim, "Union Made," 7 pockets; the very best overall made, per doz., 8.25

NOTE.—We can furnish jumpers to match any of the above overalls at same prices; packed 1 dozen in bundle, assorted sizes 36 to 44.

YOUTHS' BIB OVERALLS.

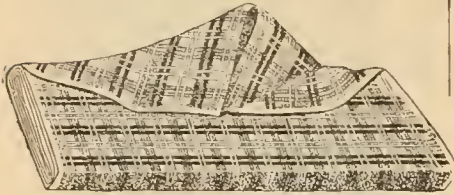
5335E—Youths' apron overalls, double and twist denim, 3-yard weight, 1 front, 1 rule and 1 hip pocket, faced side opening, strengthened crotch, cross stitched suspender buckle loop, patent riveted buttons, 1 dozen in package, assorted sizes 26 to 32.....per doz., 3.50

CHILDREN'S BROWNIE OVERALLS.

1 dozen in bundle, assorted sizes.
5815AE—Apron front, blue drill, "Star" pattern, 1 pocket, sizes 4 to 12.....per doz., 2.00
500AE—Apron front, plain blue denim, 2 pockets, sizes 7 to 14, doz., 2.15

DRY GOODS.

COTTON NOVELTY SUITINGS.



Elmwood—28 inches wide, bookfold, Scotch effects, in blue, red, brown, and garnet, about 45-yard pieces.per yard, \$0.07

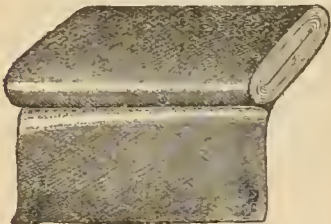
PLAIN COLORED SUITINGS.

Plain Homespuns—In gray and black, popular skirting goods, 36 inches wide, about 35-yard pieces, per yard, .16½

Plain Broadcloths—26 inches wide, in cream, light blue, pink, red, medium green, dark green, garnet, royal blue and navy blue; the newest creation in cotton goods, very stylish, about 35-yard pieces, per yard, .19

Plain Poplins—28 inches wide, every thread mercerized, in white, cream pink, light blue, gray, reseda, castor, red, garnet, brown, dark green, royal blue, navy blue, and black, about 35-yard pieces, yard, .25

PLAIN COLORED CASHMERES AND HENRIETTAS.



DM—Cashmere, 32 inches wide, in gray, tan, brown, red, navy, garnet, and black, about 50-yard pieces.per yard, .16½

Colored Cashmeres—30 inches wide, mercerized yarn, in white, cream, pink, light blue, gray, light green, castor, red, garnet, golden brown, dark green, royal blue, navy blue, and black, about 45-yard pieces, per yard, .18

Colored Cashmeres—36 inches wide, in light blue, pink, navy blue, red, brown, green, garnet, royal blue, and black, about 50-yard pieces, per yard, .20

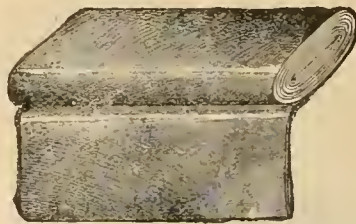
FANCY WAISTINGS.

D345E—27 inches wide, white hair-line striped patterns, in royal blue, navy blue, golden brown, dark green, red, and black, about 35-yard pieces.per yard, .16½

D386E—All-wool flannels, 25 inches wide, plain goods, with white Nub-yarn patterns; in pink, dark brown, royal blue, cadet blue, navy blue, and black, about 35-yard pieces.per yard, .25

D186E—Mercerized waistings, 27 inches wide, basket weave with medium ring patterns, in dark green, golden brown, navy blue, and red; very stylish; about 16-yard pieces.per yard, .37½

PLAIN COLORED MOHAIRS.



Cream Mohair—36 inches wide, about 50-yard pieces. .per yard, \$0.25

D4135E—Sicilian, 38 inches wide, in cream, navy blue, red, golden brown, medium green, and black, about 50-yard pieces. .per yard, .32½

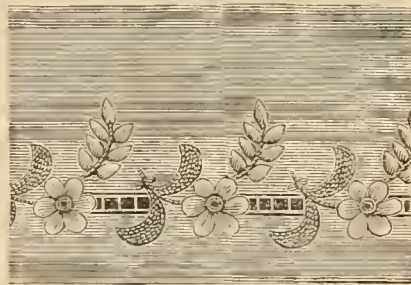
We will cut the following in pattern lengths to suit the trade:

D350E—Mohair, 42 inches wide, in royal blue, dark brown and black.per yard, .37½

EMBROIDERED

SKIRTING FLANNELS.

These goods are embroidered with all silk on a 36-inch nice quality wool cream white flannel. A popular fabric for ladies and children. They come 9¼ yards to piece, and we do not cut pieces.



D302E—36 in. wide, hemstitched, with small floral pattern, yard, .42½

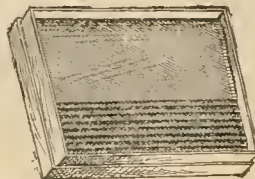
D2186E—36 in. wide, hemstitched, small floral pattern. . . .per yard, .50

D2234E—36 in. wide, hemstitched, small oval pattern. . . .per yard, .60

D1786E—36 in. wide, hemstitched, large vine pattern. . . .per yard, .75

COLORED VELVETEENS.

We will cut the following qualities in pattern lengths to suit the trade:



A10E—Colored velveteens, in white, cream, sky blue, turquoise, turkey red, light cardinal, light garnet, garnet, emerald, myrtle, navy blue, royal blue, gray and brown, 18 inches wide, about 35-yard pieces.per yard, .22½

D4E—Silk faced velvet, 17 inches wide, in brown, violet, black, emerald, white, light navy blue, pink, scarlet, cardinal, and light blue, about 35-yard pieces, yard, .35

PLAIN STORM FLANNELS.

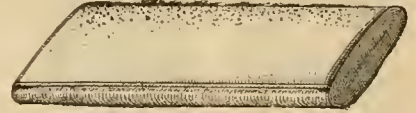
Put up about 50 yards to piece.

Albany—Good seller, in light blue, red, brown, and gray. . . .yard, \$0.06

Highland—Extra good weight and popular underskirt fabric, in solid blue, red, gray, and brown, 27 inches wide.per yard, .06½

PLAIN WHITE FLANNELS.

Put up about 35 yards to piece.



BKE—24 inches wide. . . .per yard, .12½

GWO6E—3-4 wide. . . . per yard, .19

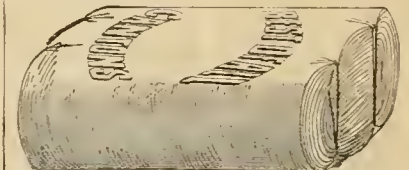
DBE—3-4 wide.per yard, .25

UNBLEACHED

CANTON FLANNELS.

Put up about 50 yards to piece.

These flannels are firm in construction and well napped; very salable goods.



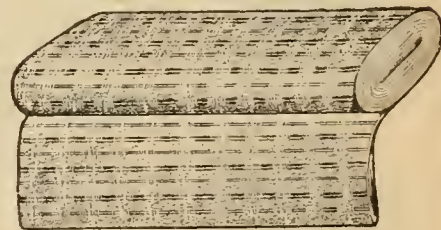
D100E—25 inches wide, per yard, .03¾

AAE—25 inches wide. . .per yard, .05

CE—28 inches wide. . . .per yard, .07

OUTING FLANNELS.

Put up about 50 yards to piece.



Eiderdown—Stripe, check, and plaid patterns, dark colors: blue, red, gray, green, and brown; good sellers.per yard, .03¾

Preston—Stripe and check patterns, light colors, cream, light blue, and pink.per yard, .04¾

Tiptop—Check and plaid patterns, dark colors, navy blue, red, black, brown, and gray; also light colors, pink, light blue, and gray, yard, .06

Stranger—In patterns of bourette, broken hairline, and narrow stripes, light colors, tan, light blue, pink, and cream, per yard, .07¾

MR. JOY IS JOYFUL THAT HE STRUCK THE B. B. H.

Boston, Ga., July 18, '05.

Baltimore Bargain House:

Gentlemen—First order received some time ago, and can truly say that I have never been able to duplicate your values in any other house with which I have dealt. Your motto expresses my thoughts exactly: "More Goods for Same Money, Same Goods for Less Money." Yours truly,

JOSEPH W. JOY.

FANCY FLANNETTES.

About 50 yards to piece.



Oxford—27 inches wide, in small and large fancy figure stripe, polka dot, and small check patterns, in black, navy blue, light blue, red, dark green, brown, royal blue, pink, tan, and light green.....per yard, \$0.07½

Woolsey Crepe—27 inches wide, in polka dot, ring, and fancy stripe patterns, in cream, royal blue, red, slate, dark green, brown, tan, pink, light blue, and light green.....per yard, .08

Superfine Flannel—27 inches wide, fine quality, the latest and best flannel on the market, in stripe, floral, scroll, and Persian patterns, in royal blue, garnet, cream, red, light blue, navy blue, light green, brown, and pink, per yard, .11½

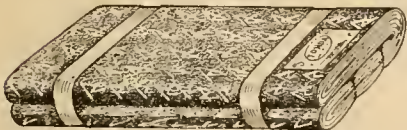
APRON GINGHAMS.

Typhoon—Colors of blue, brown, green, large and small checked patterns and also fancies, about 50-yard pieces.....per yard, .04¼

Full Standard—Colors of blue, black, brown, green, red, large and small checked patterns, also above colors in tweedy patterns, about 50-yard pieces...per yard, .05¾

FANCY PRINTS.

About 50 yards to piece.



Red Prints—In black and white patterns.....per yard, .03¾

Royal Blue Prints—Good quality, latest patterns.....per yard, .03¾

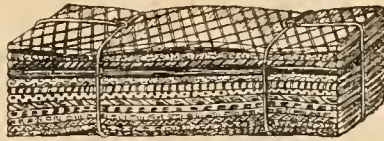
Indigo Blue Prints—Good quality, good assortment of patterns, per yard, .037½

Fancy Prints—Latest patterns, per yard, .04

Standard—Silk finish, all good patterns.....per yard, .05½

REMNANT DEPARTMENT.

We do not break bundles.



Apron Gingham—In 10 to 20-yard lengths, assorted in 200-yard bundles; fast seller....per yard, \$0.03¾

Indigo Blue Prints—In 10 to 20-yard lengths, assorted in 200-yard bundles.....per yard, .037½

Fancy Dress Gingham—In 10 to 20-yard lengths, assorted in 200-yard bundles.....per yard, .04½

Striped Outing Flannels—In 10 to 20-yard lengths, dark colors, assorted in 150-yard bundles, yard, .04½

Fancy Zephyr Gingham—In 10 to 20-yard lengths, assorted light and dark patterns, in 200-yard bundles.....per yard, .05

Hickory Shirtings—In 10 to 20-yard lengths, blue and brown stripes, 150 yards to bundle, yard, .05¾

Fancy Outing Flannels—In 10 to 20 yard lengths, assorted dark colors, 150 yards to bundle, per yard, .06

Fancy Cretonnes—36 inches wide, in 10 to 20-yard lengths, assorted in 200-yard bundles....per yard, .06½

Fancy Flannelettes—36 inches wide, in 10 to 20-yard lengths, assorted in 200-yard bundles, per yard, .06½

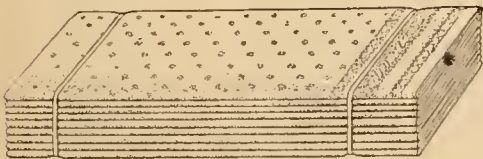
Fancy Outing Flannels—In 10 to 20 yard lengths, assorted light colors, 150 yards to bundle....per yard, .06¾

Fancy Flannelettes—27 inches wide, in 10 to 20-yard lengths, assorted in 200-yard bundles...per yard, .07½

Plain Color Velveteens—19 inches wide, in 3 to 5-yard pieces, assorted in 50-yard bundles, yard, .27½

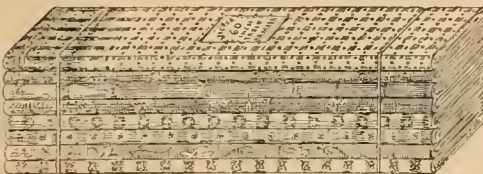
Plain Repellants—54 inches wide, in 4 to 10-yard lengths, assorted in 50-yard bundles....per yard, .32½

REMNANTS OF TABLE DAMASK.

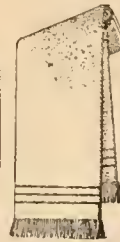


"White Rose"—Special lot of bleached damask remnants, full 58 inches wide, heavy weight, new damask patterns with borders to match, fast selvedge, 50 yards to bundle; remnants come in the following lengths: 2½ yards, 5 yards, 7½ yards and 10 yards.....per yard, 16½c

TURKEY RED DAMASK REMNANTS.

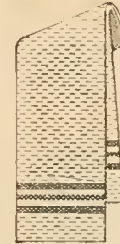


"Victor"—Remnants of fine grade turkey red damask, 50-yard bundles, bundles evenly assorted in staple red and plaid patterns; pieces are in 5 and 10-yard lengths so that they can be cut in desirable table lengths, about 6 different table patterns in each bundle, giving a large assortment.....per yard, 19c



BLEACHED COTTON TOWELS WITH FRINGED ENDS.

285E—Size 14x29, white duck, good quality, full bleached, red striped border, fringed ends, per doz., 28½c



BLEACHED COTTON TOWELS WITH HEMMED ENDS.

257E—Size 20x40, full bleached huck, looks like real linen, extra heavy, fast color red striped borders, selvedge sides, hemmed ends; good bargain counter number, per doz., 90c

HEMSTITCHED LINEN

TOWELS AT \$2.25.



2180E—Most houses get at least \$2.75 for this towel, but that isn't the B. B. H. way of merchandizing. We bought them exceptionally cheap, and, as is our invariable method to base our selling price on the cost of an article instead of its market value, we offer this towel at \$2.25, its real value being at least \$2.75. Measures 22 inches wide by 45 inches long, good quality German union linen, silver bleached, woven in showy damask patterns, fast selvedge, wide hemstitched ends, comes in plain white only, doz., \$2.25

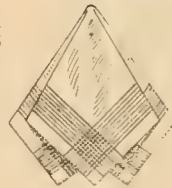
MEN'S TURKEY RED

HANDKERCHIEFS.



24AE—Warranted fast color, elaborate flowered border, red center figured in combination black and white designs, hemmed all around, called 24 inch, per doz., 24c

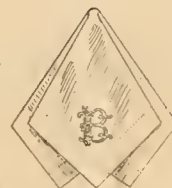
MEN'S PLAIN WHITE HANDKERCHIEFS WITH CORD BORDERS.



2111E—This number is one of our specials that we have sold for many seasons with remarkable success; good quality soft finish cambric, wide corded border, hemmed and selvedge sides, 2 dozen in pasteboard carton, size 19x17¾.....per doz., 32½c

MEN'S JAPONETTE

INITIAL HANDKERCHIEFS.



20278E—Silk finished Japonette, 1-inch border, 2-inch open-work silk initial in corner, size 17x17; we carry in stock the 18 staple initials as follows: A, B, C, D, E, F, G, H, J, K, L, M, N, P, R, S, T and

W; 1 dozen in box, either solid or assorted initials.....per doz., 67½c

If we make a mistake, let us know; we'll be quick to rectify it.

LADIES' MUSLIN GOWNS.

Sizes 15, 16 and 17 assorted to dozen.



2150E — Box plaited front, deep yoke front and back, front yoke with 18 rows of narrow tucks, and 2 rows of wide openwork Hamburg insertion, high neck, with 1-inch plain cambric ruffle, 1½-inch ruffle or cuffs, felled inside seams, outside seams taped, ½-inch hemstitched bottom.....per doz., **\$4.20**

LADIES' MUSLIN SKIRTS.



2465E, \$2.50 Doz.

2465E — Size 40 only, 10-inch ruffle at bottom trimmed with 3 tucks and 1-inch lace ruffle, 1½-inch sanitary waistband with tape ties, doz., **\$2.50**



2466E, \$4.00 Doz.

2466E — Size 40 to 44, made of good quality muslin, full cut, wide sanitary waistband, hemmed ties, 8-inch bottom ruffle trimmed with 1½-inch row of American lace insertion and edged with 1¼-inch lace to match, a very showy garment, per doz., **\$4.00**

LADIES' MUSLIN DRAWERS.

Sizes 23, 25, 27 and 29 assorted to dozen. The following numbers are open in front and back.



221E, \$1.37½ Doz.



203E, \$2.25 Doz.

221E — Fair quality muslin, cut full, perfectly plain, 3 tucks above a 1¼-inch bottom hem, hemmed waistband with tape ties.....per doz., **\$1.37½**

203E — Excellent quality muslin, wide umbrella shape, umbrella ruffle of good quality cambric trimmed on edge with 2½-in. heavy torchon lace, wide waistband with tape ties, doz., **\$2.25**

LADIES' SHORT CHEMISE.

Sizes 36, 38, 40 and 42, assorted to dozen.



2495E — Staple muslin, cut full, low neck with ½-inch Irish trimming, armholes to match, 9x4½-inch bosom of embroidery in assorted designs, outside seams taped, inside seams felled, per doz., **\$2.25**



LADIES' FLANNELETTE GOWNS.

29000E — Good quality staple flannelette, assorted pink and blue, neat striped effect, deep yoke front and back, front trimmed with 2 V-shaped rows of neat feather-stitched braid, broad turndown collar, bell shaped cuffs, per doz., **\$4.50**

CHILDREN'S FLANNELETTE DRESSES.



2200E — Staple dress of fair quality striped outing flannel, assorted in pink and blue effects, yoke trimmed in center with row of neat embroidery and feather-stitched braid, revers on each side, gathered cuffs trimmed with featherstitched braid, 2 buttons on back, sizes 1, 2, 3 and 4 assorted to dozen, per doz., **\$2.10**

CORSETS.

New Model — Straight front stripped with a very fine grade of English satteen, solid zone section running from front to back over the hips, made in medium length of very heavy white corset jean, trimmed with wide lace top and bottom, boned throughout with metal tipped watch-spring wire, 4-hook clasp, per doz., **\$3.95**

THE F. P. PINCH IN WAIST CORSET to Retail at \$1.00.



1660E F. P. — Excellent quality white coutille, fine boning and hip. The pinch in waist feature is a great invention, it tightens at the waist so as to prevent shifting, and gives an elegant and graceful figure; sizes 18 to 30.....per doz., **\$7.90**

PURE SILK COLORED TAFFETA RIBBON.



"Columbia" — The best all-silk taffeta ribbon on the market at the price. Guaranteed pure silk, good weight, closely and evenly woven, fast edges, brilliant metallic or luster finish, in the following colors: black, white, cream, maize, light pink, medium pink, light blue, medium blue, scarlet, cardinal, national blue, navy blue, Nile green, lilac, violet, turquoise, emerald green, brown, royal blue, castor, and ecru.

- Columbia, No. 2, piece of 10 yds., **17½c**
- Columbia, No. 5, piece of 10 yds., **21¼c**
- Columbia, No. 7, piece of 10 yds., **27½c**
- Columbia, No. 9, piece of 10 yds., **36¼c**
- Columbia, No. 12, piece of 10 yds., **44½c**
- Columbia, No. 16, piece of 10 yds., **53¼c**
- Columbia, No. 22, piece of 10 yds., **63¾c**
- Columbia, No. 40, piece of 10 yds., **74¾c**
- Columbia, No. 60, piece of 10 yds., **85c**
- Columbia, No. 80, piece of 10 yds., **95½c**

THE REAL BRILLIANT FINISH SOFT TAFFETA RIBBON.

Special attention is called to this ribbon, which is the real brilliant finished article, as distinguished from the lack-luster goods offered as a substitute by many houses.



2845E — Popular millinery ribbon, brilliant finish, closely and evenly woven, width 4½ inches, comes in the following colors: white, cream, maize, medium pink, medium blue, turquoise, old rose, Nile green, scarlet, cardinal, silver gray, champagne, ecru, royal blue, navy blue, new mousse or olive green, light reseda, medium reseda, light bluette or cadet, medium bluette, beige, castor golden brown, dark brown, lilac, violet, and black, value \$1.75; our price, per piece of 10 yards, **\$1.15**

KNITTING YARNS.

Fleisher's Shetland Floss — Very lofty, highly spun yarn, twisted with great care, in order to give an even and fluffy effect so desirable in a Shetland floss; suitable for knitting kimonos, shoulder scarfs, matinees, evening wraps, etc., put up in 12-ounce boxes, 12 skeins to the box, in the following colors: cream white, snow white, black, dark pink, light pink, rose, heliotrope 1, darker heliotrope 2, very deep heliotrope 3, scarlet, cardinal, garnet, blue, medium blue, dark blue, navy purple, green, Nile, lemon, yellow, steel, lilac, gendarme blue, buff, dark buff, and flesh.....per box, **70c**

GOOD VALUES.

Rohrersville, Md., Aug. 23, '05.
Baltimore Bargain House:
Gentlemen — In regard to the goods that I bought of you, would say that they opened up to my entire satisfaction. They are good values for the money. You may expect orders from me in the future. Yours truly,
J. S. STINE.

All prices quoted in this Catalogue are guaranteed until November 1. The prices quoted on the Colored Sheets are special, but are also guaranteed until November 1. ❀ ❀

A Tip Top Leader

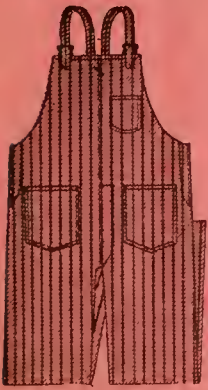
in MEN'S HOSE.



5E Thistle—Men's fast black half hose, guaranteed fast color, extra weight, 32 ounces to dozen, long leg, ribbed top, 1 dozen in box, solid sizes 9½ to 11½. These goods are first quality and are known throughout the United States to be the best and heaviest sock to retail at 15c per pair. The wholesale price has always been \$1.15 per dozen, but to give our customers the best 10c leader on the market, we have marked them.....per doz., **82½c**

An OVERALL Item of Much

Importance to You.



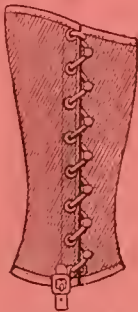
5MXDE—Men's heavy blue duck apron overalls, red and orange stripe pattern, 2 front, 1 hip and 1 watch pocket on bib, patent buttons and suspenders, 1 dozen in bundle, assorted sizes 32 to 42, doz., **4.20**

MEN'S LEGGINS.

Three specimen values.



5602E, \$3.50 Doz.

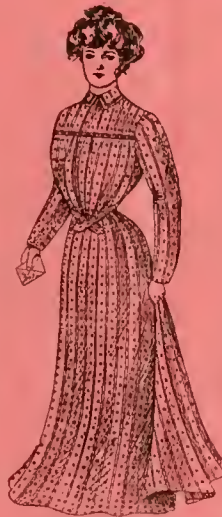


5502E, \$3.75 Doz.

5600E—Knee leggings of 6-ounce duck, "Army" style, laced sides, per doz., **2.25**

5602E—Knee leggings of 10-ounce duck, side spring style, per doz., **3.50**

5502E—Gray covert cloth knee leggings, blanket lined, laced, per doz., **3.75**



LADIES' WRAP-PERS.

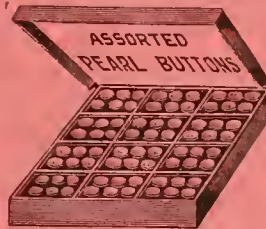
3571E—Fair quality percale, attached lining, turnover collar, yoke effect front and back, trimmed with 1 row of fancy braid, plain sleeves, full sizes, assorted blue, red, and black striped patterns, 1 dozen to bundle, assorted sizes 34 to 44, **4.50**

LADIES' STRAW SAILORS.



M20E—Lafayette, trimmed sailor of Canton braid, 4-inch brim, 2½-inch crown, trimmed with black grosgrain band, bow at side, cotton sweat, paper tip; black only.....per doz., **1.85**

Assortment of SHIRTTWAIST or CLOAK BUTTONS.

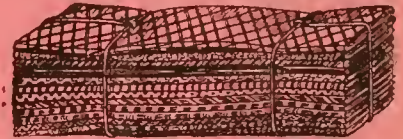


1503E—Consists of 2 gross pure white, highly polished American pearl; 12 dozen 30-line, 8 dozen 36-line, and 4 dozen 40-line, ½ dozen on black card, fisheye; metal shank, fancy carved and grooved, put up in fancy display cabinet; dandy sellers at 10c, 15c and 25c per card, with a net profit of over 80 per cent., our price for 2 gross, including cabinet, **3.50**

Important Information.—We lead the market on Toys, Fancy China, and Holiday Goods, and our prices are 'way down. We import direct from the manufacturers. We get the newest things and dispose of them quickly. Our stocks are much larger than formerly, and you certainly shouldn't miss seeing our illustrated October Catalogue, which will be issued October 1. It's yours for the asking.

DRY GOODS That Create Sales.

Eiderdown—In neat stripe, check and plaid pattern, dark colors in blue, red, gray, green, and brown; another indication where we sell the same goods for less money, per yard, **3¾c**



Indigo Blue Prints—In 10 to 20-yard lengths, assorted in 200-yard bundles, nice, clean goods—goods you can readily sell with an excellent profit..... per yard, **3¾c**

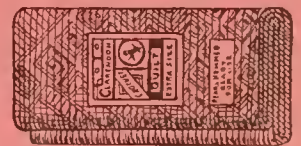
Fancy Zephyr Gingham—In 10 to 20-yard lengths, assorted in light and dark patterns, put up 200 yards to bundle; other houses ask more money for these goods, but from us they're.....per yard, **5c**

60-INCH BLEACHED DAMASK, 14½c per Yard.



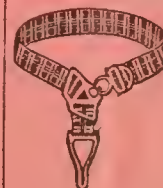
"Eureka"—Bleached cotton damask, called 60-inch, actual width 58 inches, good weight, closely woven, handsome assortment of flower and damask patterns, borders to match, value 19c; our price...yard, **14½c**

THE CELEBRATED "CLARENDON" QUILTS, 87½c EACH.



"Clarendon"—High grade quilt, assorted handsome figured and scroll patterns, with appropriate borders, hemmed ends, selvedge sides, ready for immediate use, size 81x-88.....each, **87½c**

MEN'S GARTERS.



1110E—Imitation of the "Brighton" garters, assorted fancy plaid patterns, strong elastic loom web, ¾-inch, nickel trimmings, 1 dozen pairs in box, doz. pairs, **43c**

REMARKABLE CLOTHING VALUES.



86445E, \$3.75 Suit.

MEN'S SUITS.

86424E—Sack suit of wool cassimere, in dark blue, having a visible mixture stripe of garnet and olive, satin piped facings, per suit, **3.25**

86428E—As above, in double-breasted sack suit, **3.50**

86445E—Sack suit of cheviot, dark olive mixture goods, woven in herringbone pattern, satin piped facings, very attractive and salable, **3.75** suit,

86448E—As above, indouble-breasted sack suit, **4.00** suit,

BOYS' SUITS.

86701E—Double-breasted suit of wash melton, dark ground, with gray and brown stripes woven so as to produce a check pattern, buttoned to the neck, ages 6 to 14, per suit, **80c**

86701XE—Same as above, ages 9 to 15..... per suit, **90c**



86707E—Double-breasted suit of union cassimere, dark ground, with a gray Oxford mixture, and having broken stripes alternating in gray and olive, ages 6 to 14, suit, **1.05**

86707XE—Same as above, ages 9 to 15..... per suit, **1.15**

MEN'S PANTS.

86103E—Fancy cotton worsted, black ground, with wide and narrow blue stripes; big value in these, per pair, **55c**

86126E—Union cassimere, black ground, with a mixture of gray diagonally woven, and between this are olive and garnet, the whole forming a neat stripe pattern, per pair, **90c**



86157E, \$1.15 Pair.

86161E, \$1.25 Pair.

86157E—Fancy worsted, dark ground, with a small threefold stripe of olive and gray alternating, with single gray stripes 1/4 inch apart; big money's worth, per pair, **1.15**

86161E—Fancy worsted, black ground, with alternate hairline stripes in blue and gold, and gray, 1/2 inch apart, and between these is a threefold stripe in gray.....per pair, **1.25**

MEN'S OVERCOATS.

Sizes 34 to 42.

81866E—Overcoat of black beaver, made with velvet collar and trimmed with piped facings, cut full and roomy, length 42 inches; try to duplicate it at less than \$3.75; our bargain **2.75** price..... each,

86903E—Overcoat of black beaver, good grade, velvet collar, cut loose and full, length 50 inches, belt in back; a special value...each, **3.75**



85906E—Overcoat of fancy wool cassimere, new stylish dark brown goods, with a combination mixture, collar made of same goods, cut in the loose, graceful 50-inch length, belt in back; has the swing and style of an overcoat that would cost much more money.....each, **4.50**

The Unmatchable "BALTIMORE"

10c ENAMELED WARE ASSORTMENT.

Run of kiln. Assortment contains 1 dozen each of the following pieces:

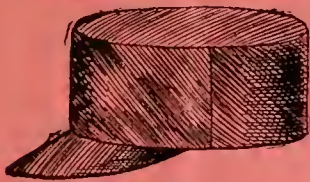


- 1 dozen No. 30 wash basins.
- 1 dozen 2-quart pudding pans.
- 1 dozen 2-quart shallow stew pans.
- 1 dozen 2-quart milk pans.
- 1 dozen 1-pint large pieced cups.
- 1 dozen No. 60 soap dishes, with drainers.
- 1 dozen 10-inch pie plates.
- 1 dozen 1-quart covered buckets.
- 1 dozen 1 1/2-quart deep pudding pans.
- 1 dozen 1-quart extra deep stew pans.
- 1 dozen 2-quart preserving kettles.
- 1 dozen 2-quart lipped sauce pans.

Making 12 dozen of the largest pieces ever sold to retail at 10c each, **89c** per doz.,

Sold in case lots only, no charge for case.

**HAT and CAP Bargains to
Make Your Selling Brisk.**



69688E—Men's black twill serge shop and mill caps, 2 dozen in box, sizes 6 $\frac{1}{4}$ to 7 $\frac{1}{4}$per doz., **30c**



61339E—Men's and boys' satin lined caps, made of wool cassimere, assorted patterns, black glazed bill, 1 dozen to box; men's sizes 6 $\frac{1}{4}$ to 7 $\frac{1}{4}$; boys' sizes 6 $\frac{1}{4}$ to 6 $\frac{3}{4}$; state whether boys' or men's are wanted. We have sold, during the month of August, over 400 dozen at \$2.00 per dozen, and for this month we will offer them at.....per doz., **1.85**



68608E—

Get ahead of your competitor and sell fur hats for less than wool

hats cost. We offer, this month, 96 dozen men's fur 1 ounce hats in tan and gray....per doz., **3.65**



62046E—The Ambassador shape, in black; this is a very distinguished shape and one that's entirely different from anything shown in goods of this quality; for this month we will offer 15 cases of this shape in the "University" brand; it's the exclusive hat house's \$21.00 grade, which we always sell at \$18.00, sizes 6 $\frac{1}{4}$ to 7 $\frac{3}{4}$, packed 1 hat in box, per doz., **16.50**

62047E—Same as above, but in Japo brown, doz., **16.50**

SAVED HIM 15 PER CENT.

North Bend, Miss., July 7, '05.
Baltimore Bargain House:
Gentlemen—Your goods give satisfaction and save me 15 per cent. based on what I can do anywhere else.
Yours truly,
J. S. DANIEL.

**A SOUND BUSINESS
PROPOSITION.**

In order to introduce this brand to merchants who have never bought the "Iron Clad" guaranteed hat, we will allow a rebate of \$1.50 on every dozen. This special offer to hold good for the month of October only.



The above is a facsimile of the printed guarantee contained under the sweat band of every "Iron Clad" hat, authorizing you to give your customer a new hat or refund the money for any not giving satisfaction. Simply return the hat to us and we'll make the allowance.



62100E—

The new "Howard" design, torpedo shape soft hat, in black or brown, suitable for young and middle-aged men, sizes 6 $\frac{1}{4}$ to 7 $\frac{3}{4}$, $\frac{1}{2}$ dozen in box. In

ordering, please mention color; \$15.50 per doz.

(less rebate, \$1.50), **14.00**

**THE "DRUID," DROPHEAD
SEWING MACHINE, No. 13.**



Guaranteed for 12 years.

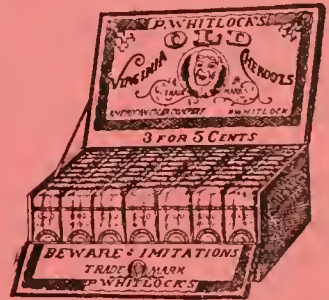
Swivel front wood-work.

The "Druid," No. 13—All the working parts are nicked—not japanned. Do not confound the "Druid" with the poorly constructed affairs that flood the market. It possesses peculiar sewing qualities and is extremely durable. It forms a double lock stitch, the feed is double and it is positive in action. The stand is polished oak, with 3 drawers; a full set of attachments is included in the machine; guaranteed for 12 years, each, **10.00**

**Two Good Values
from Our CIGAR
and TOBACCO
Department.**

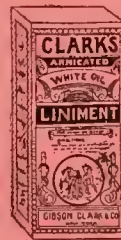


Duke's Mixture Smoking Tobacco, 1 $\frac{3}{4}$ -oz. bag...per pound, **37c**



Old Virginia Cheroots—Fine quality to retail 3 in pack for 5c, 250 in box.....per 1000, **11.60**

DRUG SUNDRIES.



Clark's Arnicated White Oil Liniment—The reputation of this liniment has been established by its efficiency in curing and relieving the ailments of man and beast, per doz., **1.58**



Mennen's Borated Talcum Powder—Too well known to need further description. At the price we are selling it every merchant who handles such goods will quickly realize what a bargain it is. How many dozen shall we send you?.. doz., **1.35**

**Eye-Opening Quotations
for Good COMBS.**

Blonde or clear horn fine combs (American make), warranted not to warp or split, 1 dozen in box.

Size No. 9, doz., \$0.27 $\frac{1}{2}$
Size No. 10, doz., .32 $\frac{1}{2}$
Size No. 11, doz., .35
Size No. 12, doz., .40
Size No. 13, doz., .42 $\frac{1}{2}$
Size No. 14, doz., .48

Raw Horn Dressing Combs (American make), coarse and fine, 1 dozen in box, size 5 $\frac{1}{2}$ x1 $\frac{1}{4}$, per doz., **45c**

**BORDEN'S "TIP TOP"
BRAND CARMELS.**



PIIE—Borden's "Tip Top" Brand Milk Caramels, packed 25 pounds in pail, **7 $\frac{3}{4}$ c**

As above—5 pounds in box, box, **40c**

CHINA MONEY BANKS.

A few good numbers that sell all the year round.



A3631E, 37c Doz.

A3631E—Size 5 in., pig bank, chocolate color, mottled, 1 doz. in package... doz., **37c**



A525E, 75c Doz.

A525E—Size 3 1/4 in., assorted animals, elephants, etc., decorated in natural luster colors, assorted 1 dozen in package, **75c** per doz.,



A524E, 85c Doz.

A524E—Size 3 1/4 in., pig in money bag, bright luster colors, in natural colors traced with gold, 1 doz. in package...doz., **85c**

CHINA NOVELTIES.



A300E, 75c Doz.

A300E—Size 2 1/4 x 3 1/4 inches, jardiniere shape, decorated with raised flowers and head of rabbit, mottled green and traced with gold, 1 **75c** dozen in package... per doz.,



A305E, 75c Doz.

A305E—Size 4 1/4 inches, slipper design, decorated with raised flowers and head of rabbit, green mottled, **75c** 1 dozen in package... per doz.,



A306E, 85c Doz.

A306E—Size 2 1/4 inches, jardiniere shape, 2 side handles, decorated with raised flowers, leaves and rabbit head, body mottled in green, 1 dozen in package, **85c** per doz.,



A307E, 85c Doz.

A307E—Length 2 3/4 in., swan shaped, mottled green body with raised flowers, leaves and rabbit head in natural colors, 1 doz. in **85c** package... per doz.,



A308E, 85c Doz.

A308E—Size 3 1/4 inches, match stand with tray, mottled green body, decorated with flowers, green leaves and rabbits in natural colors, 1 dozen in package, **85c** per doz.,

This WATCH is Guaranteed for 10 Years.



Vesper—Men's 18-size hunting case watch, 10-year guarantee stamped inside; in addition, we protect you and your customer by the guarantee; fitted with 7-jewel American movement, artistically engraved case. This watch is made by one of America's most renowned manufacturers and is an exceptional bargain for **3.15** the money.....each,

A Specimen of the CLOCK Values We Have.



Garcia—Fine enameled wood clock, adamantine finish, Cathedral gong, strikes the hour and half hour, runs 8 days with one winding, richly embossed ornaments, heavy single column on either side, dimensions 16x-11 1/2..... each, **2.65**

TEACHERS' REFERENCE BIBLES—A Rare Value.

Deut. 32, 6. 24 No man can serve two masters: for either he will hate the one, and love the other; or else, Matt. 23, 9. Luke 11, 2. 1 Cor. 8, 6. Heb. 12, 9.

Showing Style of Type.

S624E—Divinity Circuit bound, seal leather, cloth lined, red under gold edges, full concordance, helpers' dictionary, maps, etc., 30 full photo-gravures, 16mo (size 5 1/2 x 7 1/4), brevier type; the largest type Bible published in this size, vol., **1.08**

S625E—As above, with thumb index.....per vol., **1.25**

POCKET EDITION NEW TESTAMENT.

Round corners, red under gold edges.



S6101E—Black seal, leather bound, ruby type, silk ribbon book mark, size 48mo (3x-4 1/4), the kind we usually sell at 22c per vol., **2.10** per doz. vols.,

A Bargain in BOX PAPER

24 sheets, 24 envelopes. S2629E—Priscilla, ruled, superior finish plate paper, extra weight, wallet envelopes, large tandem box, size 9 1/2 x 5 3/4 x 1 1/2, handsome picture cover, **82c** per doz.,

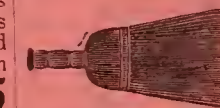
ENVELOPES on Which You Can Save Money.



Extra good clean white stock, high cut, neatly labeled and banded to match, packed 250 in box.

S821E—XXX5.....per 1000, **65c**
S822E—XXX6 1/4.....per 1000, **75c**
S824E—XXX6 3/4.....per 1000, **80c**

WHISK BROOMS at a Bargain Price.



4115E—We secured a lot of good 10c whisk brooms from a "pinched" manufacturer, and

therefore give you the benefit of our special purchase; good fair quality corn, 2 sewing, plush cap, total length 10 inches.... per doz., **75c**

"PRINCETON" JUG ASSORTMENT.

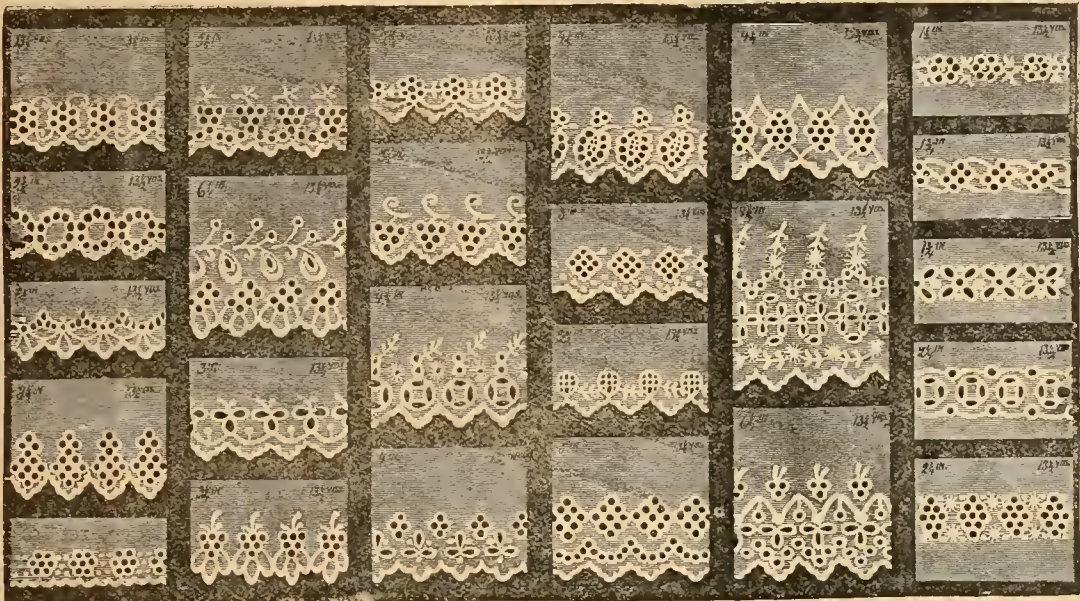


Four very attractive patterns, elk, squirrel, hunter, and swan patterns, clear crystal, embossed with rustic scenes, 2 with high foot and 2 with flat bottom, stuck handle and large wide lip, will hold 1 quart, the largest jug on the market to retail for 10c, 3 dozen in barrel, assorted.....per dozen, **85c** Barrel, 35c extra.

SATISFACTORY IN EVERY RESPECT.

DeYoung, Pa., June 15, '05. Baltimore Bargain House: Gentlemen—Enclosed find check to balance account. Goods proved satisfactory in every respect and your prices are O. K. Assuring you of our future orders, I remain Yours truly, **M. G. CAMPBELL.**

EMBROIDERY.



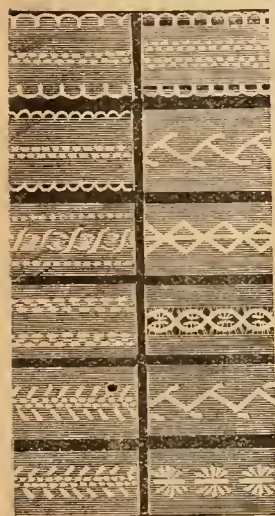
"ILION"—Manufacturers' strip lot, containing 337½ yards—assorted in 67½ yards of cambric insertion and 270 yards of cambric edging. Assortment represents 20 different styles of cambric edging and 5 styles of cambric insertion, as represented in the cut herewith. Width of each piece plainly marked in cut; 2 pieces of each style, each piece containing 6¾ yards. A specially well selected line of patterns, none of which need be sold under 5c per yard, and some of which will bring as high as 12½c per yard. This is one of the best values we have ever offered; no less than complete assortment sold..... per yard, \$0.037½

FAMOUS CLARENDON QUILT



Clarendon—The celebrated high-grade quilt, comes in assortment of handsome figured and scroll patterns with appropriate borders, hemmed ends, selvedge sides, ready for immediate use, size 81x88..... each, 87½c

FEATHERSTITCHED BRAID ASSORTMENT.



2000E—Cabinet of all white featherstitched braid, 36 pieces, 4 yards each, all extra wide, 12 different patterns; former price, \$1.00; now, cabinet, 80c
 2001E—As above, contains 18 pieces white and 18 pieces assorted, staple colors, cabinet, 80c

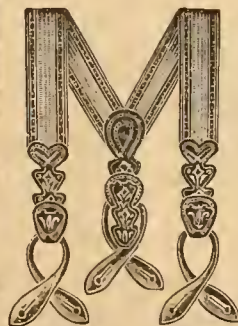
Special Offer in 50c SUSPENDERS.
 Each pair in neat fancy decorated box.



1409E—Elastic high grade silk finished lisle web, 1½ inches wide, nobby patterns, cross back, white kid tips and calfskin ends, selected white gilt cast-off buttons, highly polished gilt sliding buckles..... per doz., \$3.00

THE 50c "NOBUCKLE" SUSPENDER.

A great comfort for men.



Finest and Best Quality Elastic Web—Variety of patterns, extra strong, russet leather notched tips, soft and flexible calfskin ends. No metal parts to rust or tear the clothing, no pulleys or cords to wear out, ½ dozen in box, assorted sizes, a year's guarantee with every pair.... per doz., \$2.25

MEN'S SILK SHIELD BOWS.



200020E—Fancy silk, full assortment of patterns, high shield, 12 different styles on card.... (gross, \$2.25); per doz., 19c

MEN'S FANCY SHIELD TECKS.

2089E—Silk teck, big assortment of fancy patterns, strong shield, special value, 1 dozen in box... per doz., 90c

MIDGET STRING TIES.



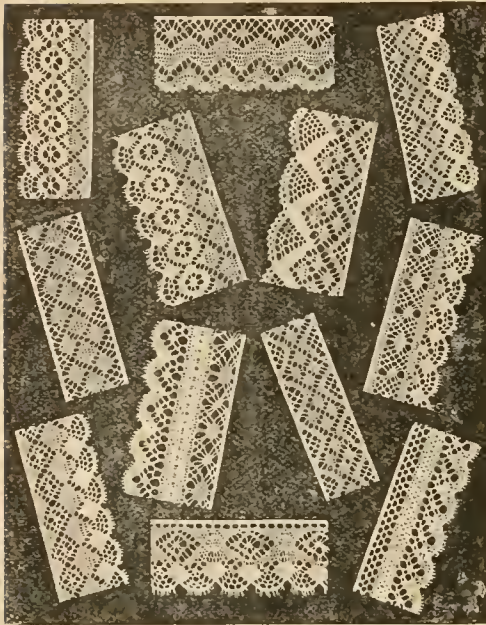
2500E—Narrow fancy silk string tie, width ¾-inch, length 29 inches, ties up into the neatest and naggiest imaginable bow, full assortment of the season's most popular patterns, neat effects, (gross, \$10.00); per doz., 85c
 2501E—As above, in black silk, (gross, \$10.00); per doz., 85c
 2502E—As above, in red silk, (gross, \$10.00); per doz., 85c
 2503E—As above, in royal blue silk, (gross, \$10.00); per doz., 85c
 2504E—As above, in brown silk, (gross, \$10.00); per doz., 85c
 2505E—As above, in emerald green silk, (gross, \$10.00); per doz., 85c

BLACK PATENTINE BELT.



171E—Perfect fit, circular model, welted center seams, soft and pliable as kid, conforms to lines of figure, reinforced front straps, Japanned buckle, sizes 24 to 30, inclusive, 1 dozen in box; our price..... per doz., \$1.25

Detroit, Ala., April 15, '05.
 Baltimore Bargain House:
 Gentlemen—I have been in business for fifteen years and never bought from a house that gave as good prices as yours. Yours truly,
 J. V. GREGORY.



LACE ASSORTMENT.

25E—Assortment of heavy German torchon lace, consists of 10 pieces of lace and 2 pieces of insertion, each piece containing 24 yards; this is one of the greatest assortments of German torchon lace ever offered; the styles are staple and well selected, ranging in width from 1½ to 2¼ inches, value ranging from 45c to 67½c; these goods make an ideal trimming for muslin underwear, as they are especially adapted for wash purposes (per doz. yards 32½c), making the entire assortment of 24 dozen, or 288 yards, cost you.....\$7.80

MEN'S UMBRELLAS.



2414E—Covered with fast black mercerized cloth, steel frame, enameled steel rod, assortment of handles represents 2 of each handle shown in the cut, as follows: 2 carved horn in dog's head effect, 2 Japanese teakwood, 2 silver-trimmed Congos, 2 carved Arabian vine studded with silver disks, 2 silver-trimmed Acacia wood and 2 carved Arabian vine, with bone tips; usual \$6.00 umbrella of other houses, size 26 and 28-inch assorted to the dozen... per doz., \$4.50

MEN'S SELF-OPENING UMBRELLA.



"THE BUTTON DOES THE REST"

2225E—Exclusive umbrella houses never sell this number under \$6.00 per dozen, fast black cotton cover, mounted on steel rod, patent self-opening frame, nickel rib catch at top, highly polished Congo handles, sizes 26 and 28-inch assorted to the dozen.....per doz., \$4.75



2500E, 24¾c Pair.

NOTTING-HAM LACE CURTAINS.

2500E—White, 2½ yards long, 28 inches wide, pair, 24¾c



2523E, 85c Pair.

RUFFLED MUSLIN CURTAINS.

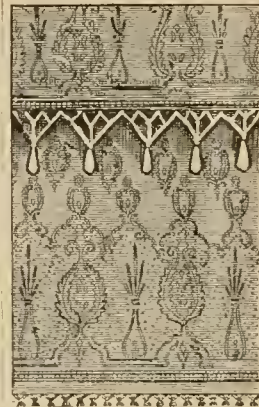
250E—Length 2½ yards, width 24 inches, plain white lawn, trimmed with 4¼-inch ruffle of same material, tape bound, evenly hemmed all around, pair, 19c

MR. GARNER ECHOES THE FEELINGS OF THOUSANDS OF OTHERS.

Luxomni, Ga., March 10, '05. Baltimore Bargain House: Gentlemen—I am more than pleased with the order you filled for me, and the goods were received in first-class condition. Yours truly, JAMES R. GARNER.

TAPESTRY PORTIERES.

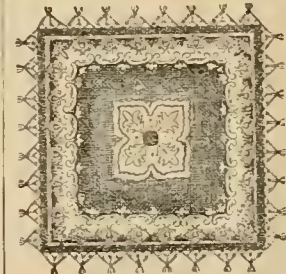
All measurements include fringes.



27500E—Length 116 inches, width 29 inches, two tone reversible portiere, red ground, figured all over in woven Jacquard designs in a brighter shade of red, deep throwover at top, with long knotted and tasseled fringe, knotted fringe on bottom, pair, 95c
27501E—As above, green ground, with bright green figures, pair, 95c
27502E—As above, red ground, with green figures..... per pair, 95c

4-4 CHENILLE TABLE COVERS.

All measurements given below include fringe.



2400E—Size 4-4, actual measure 33x33, fair quality chenille, assorted colorings; our special price, doz., \$2.20

6-4 CHENILLE COVERS.

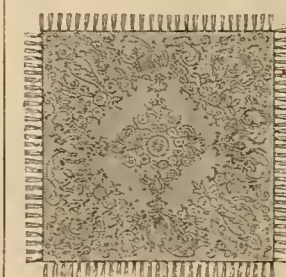
All measurements include fringe.



242E—Size 6-4, actual measure 54x54, animal pattern, selected chenille stock, red grounds, 3 different patterns, evenly fringed all around; price very low, per doz., \$5.90

TAPESTRY TABLE COVERS.

All measurements include fringe.



2750E—Special lot of tapestry covers, fair quality, medalion center with wide flowered border, fringed all around, colors: red, with green figures; red, with olive figures; red, with red figures, and green with green figures; sizes as follows:

Size 4-4, actual measure 37x37, per doz., \$1.85
Size 6-4, actual measure 56x56, per doz., \$4.50

CARPETS.

Our line of Carpets embraces all grades, from the cheapest ingrain to the finest 3-shoot velvet; the goods are made in all the fashionable colors prevailing for this fall. In ordering Carpets, state colors desired.

INGRAIN CARPETS.

36 inches wide.



Granite Ingrain Carpets—Full weight and made of hard twisted cotton, and full number of ends in the warp, giving the carpet a heft that is unequalled in this grade; about 80 yds. to roll, yard, \$0.18

All Cotton Ingrain Carpets—Full 10-pair, the color effects are absolutely perfect, about 65 yards to roll.....per yard, .21

1/4-Wool Ingrain Carpets—New and original effects, both in patterns and colorings; the wool is thoroughly scoured and free from grease. These goods are absolutely 1/4-wool unions; about 65 yards to roll.....per yard, .26 1/2

1/2-Wool Ingrain Carpets—A high grade fabric of selected material, the patterns and colors are original and taking and free from freaks; about 65 yards to roll, yard, .30

Wool Filled Super Ingrain Carpets—Absolutely all-wool filling, of unsurpassed quality; a very attractive line of patterns and colorings, about 65 yards to roll, per yard, .40

Extra Super Ingrain Carpets—The best grade of ingrain carpets made. Made of selected wool yarn, thoroughly scoured, using only the best dyes; guaranteed full 13 pair with 1080 ends, absolutely all-wool warp and filling; about 65 yards to roll...per yard, .55

BRUSSELS CARPETS.

27 inches wide.

7-Wire Tapestry Brussels Carpet—Worsted face, excellent wearing quality, full count 7-wire tapestry Brussels carpets; about 65 yards to roll...per yard, .45

9-Wire Tapestry Brussels Carpet—A high grade tapestry Brussels carpet, linen back, heavy worsted surface, newest patterns and colorings; about 60 yards to roll.....per yard, .56

10-Wire Tapestry Brussels Carpet—The highest grade tapestry Brussels carpet made, full 10-wire count, fine worsted surface, made from the best wool yarn and dyes; about 60 yards to roll, per yard, .72 1/2

High Grade Wilton Velvet Carpet—Absolutely full worsted body and face of extra heavy pile, warranted the highest grade 3-snoot velvet carpet made; about 50 yards to roll.....per yard, .87 1/2

MOQUETTE RUGS.

Alexander Smith & Sons' entire line of patterns for the fall of 1905.



- R1018E—18x36 inches.....each, \$0.70
- R1027E—27x54 inches.....each, 1.52
- R1036E—36x72 inches.....each, 2.50

JUTE SMYRNA RUGS.

Reversible jute Smyrna Rugs in floral, medallion, and animal patterns with fringe. The cheapest reversible Smyrna Rug on the market.



- R312E—Size 30x60 inches... each, .75

MATTINGS.



TRADE MARK

About 50 yards to roll.

36 inches wide, following colors:

- R101GE—Plain solid green.....
- R103RE—Plain solid red.....
- R104BE—Plain solid blue.....
- R14GE—Green with orange and red stripe.....
- R308WE—Green with white stripe.....
- R20RE—Green and black with red stripe.....
- R205GE—Plain green and black.....
- R202RE—Black and red mottled.....
- R1000E—27-inch, stairs—heavy bound, to match above patterns, per yard, .25

Per yd.
31c

WIRE GRASS MATTING RUGS.

With heavy wool solid color fringe.

- R118E—Size 18x36 inches...each, .24
- R121E—Size 21x42 inches...each, .33 1/2
- R126E—Size 26x52 inches...each, .52 1/2
- R130E—Size 30x60 inches...each, .66
- R136E—Size 36x72 inches...each, .91
- R169E—Size 6x9 feet.....each, 2.85
- R180E—Size 8x10 feet....each, 4.27 1/2
- R192E—Size 9x12 feet....each, 5.70

WINDOW SHADES.

All colors, 6 feet long by 3 feet wide, mounted on best spring rollers.

- R920E—Plain felt shades, spring rollers, fixtures complete....doz., .80
- R950E—Plain water color opaque shades, spring rollers, fixtures complete.... doz., 1.85

THE "DRUID," DROPHEAD SEWING MACHINE, NO. 13



Guaranteed for 12 years.

Swell front wood-work.

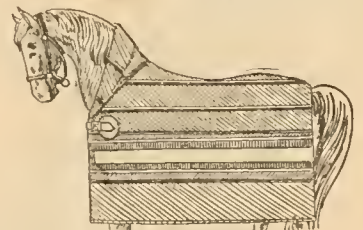
The "Druid," No. 13—All the working parts are nicked—not japanned. Do not confound the "Druid" with the poorly constructed affairs that flood the market. It possesses peculiar sewing qualities and is extremely durable. It forms a double lock stitch, the feed is double and it is positive in action. The stand is polished oak, with 3 drawers, a full set of attachments is included in the machine.....each, \$10.00

PLUSH LAP ROBES.



- Elite**—Plain solid color, single faced plush, in dark green, ruby, dark brown, dark blue, and black, soft finished long nap, mohair bound.....each, \$1.15
- Anchor**—Double plush lap robe, extra quality, plain black back, with animal, medallion and plain centers, fancy borders....each, 2.25

HORSE BLANKETS.



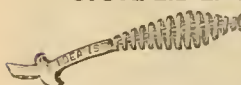
- Gem**—One of the season's successes; gray ground with dark red and yellow headings, 72x72 inches, each, .50

Lake, Ind., March 24, '05.

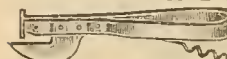
Baltimore Bargain House:
Gentlemen—We have been buying goods from you for the last five years, and have always got our money's worth. Your prices are from 15 to 35 per cent. lower than elsewhere, and our aim is to do more buying from you in the future. Yours truly,
W. T. FERGUSON & SON.

HARDWARE.

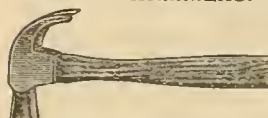
STOVE LID LIFTERS.

 419E—Al-ways cool wire coil handle, copper plated, eye to hang it up, per doz., \$0.30


COMBINATION CORKSCREW AND CAN OPEKER.

 42E—The "Never Slide," best quality can opener and strong steel wire corkscrew which folds inside of handle, 1 dozen in easel back display box, per doz., .45


HAMMERS.

 450E—Adze eye, extra steel finish, 12½ inches long, head weighs 1¼ pounds, serviceable tool, per doz., .80


HATCHETS.

 49XE—Special all-steel shingling hatchet, No. 2 size, 3½-inch blade, the largest and best tool at the price, per doz., 2.30


SCREWDRIVERS.

 4500E—Flat cold rolled steel, edge will not turn, 6-inch blade, black japanned handle per doz., .72

SAWS.

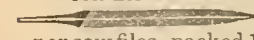
 492E—Full 26-inch, regular width, beech handle, 3 brass screws, set and filed, ¼ dozen in package, per doz., 3.75

STEEL STRAP HINGES, Regular.

 1 dozen pairs in box.

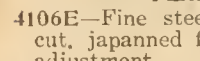
Size.	Doz. pairs.	Size.	Doz. pairs.
450E—3 in.	\$.23	453E—8 in.	\$.60
451E—4 in.	.27	454E—10 in.	.82
452E—6 in.	.42		

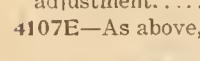
TAPER AND SAW FILES.


 41E—3-corner saw files, packed 1 doz. in box.

Size.	Doz.	Size.	Doz.
3½-in.	\$.0315	7-in.	\$.057
4-in.	.33	10-in.	.85
4¼-in.	.36	6-in.	.50

PLANES.

 4106E—Fine steel blade, 1¼-inch cut, japanned finish, with screw adjustment. each, .13

 4107E—As above, 1¼-inch cut, each, .20

 4103E—Patent adjustable block plane, 5½ inches long, 1¼-inch cutter, best quality plane iron, each, .25

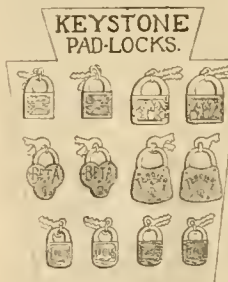
4120E—Same as above, 7 inches long, with 1¼-inch cutter. . . each, .30

CARPET TACKS IN DISPLAY CASES.


 4250E—Assorted 6, 8, and 10-ounce large papers of 250, all first quality, case containing 72 packages. per case, \$0.75

 4100E—100 to 125 first quality steel tacks, in slightly wooden kegs, assorted 6, 8, 10, and 12-ounce; will sell on sight; 72 kegs in wooden display case per case, .98

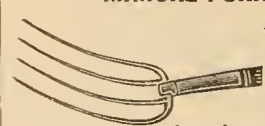
PADLOCKS.

 443E—Assorted steel case padlocks on cards, 6 are 10c leaders, 6 are cheap at 15c, 6 brass plated and 6 black japanned, 12 locks on card, 2 cards in box, per doz., .65
Single card (1 dozen) . . . per doz., .69

STEEL SHOVELS.

 442E—Long handle, round point, ¼ dozen in bundle. per doz., 3.65

MANURE FORKS.

 444½E—The "Withington," 4 oval cast steel tines 11½ inches long, plain ferule, long straight handle 4¼ feet long. per doz., 3.88

MOUSE TRAP SPECIALS.

 41ZE, 36c Doz.

 416E, 36c Doz.


44XE—Sure death mouse trap, one of the best traps made. . . doz., 16c

4ZE—All metal, galvanized iron, sure catch, the least touch means sure death, no smell, per doz., 36c


44ZE—Same, for rats, per doz., 90c


416E—5-hole metallic, made out of one piece of tin, beats them all for catching mice per doz., 36c


CURRY COMBS.

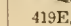
 4186E—Solid back steel curry comb, 8 rows teeth, shank runs through handle and riveted, best steel, black japanned handle, solid back. per doz., \$0.75

SCALES.

 41E—Spring balance scale, 24 pounds, will weigh anything under 25 pounds. per doz., .48

 43E—As above, except made for light and heavy work, will weigh up to 50 pounds, by dozens, per doz., 1.05

 452E—Spring balance scale, with retinned pans suspended by 3 chains, per doz., 1.50

 419E—Butchers' scale, brass dial, nickel rim, large black figures, weighs 25 pounds by ounces, white enameled round pan, each in wood box, each, 1.98

419E, \$1.98 Each.

COFFEE MILLS.


 4950E, \$1.36 Doz.

 4888E, \$2.35 Doz.

4950E—5½ inches square, grinder, thumb-screw attachments to regulate fine or coarse grinding, box dovetailed and regular size drawer. per doz., 1.36

4888E—Ever ready mill, solid square canister, holds 1 pound of coffee, will grind or pulverize, each mill mounted on finely finished board, 1 dozen in case. per doz., 2.35

CURTAIN POLES.

 422E—¼-inch ribbed poles 4 feet long, 2 screw brackets and highly polished fancy brass ball ends, used without rings, 3 dozen in case, case lots, per doz., .78
Less than case. per doz., .90

BETTER GOODS FOR SAME MONEY.

North Vernon, Ind., May 29, '05.
Baltimore Bargain House:
Dear Sirs—I am well pleased with your goods. They are better goods than I can get elsewhere for the same money. Baltimore Bargain House is rightly named.
Yours respectfully,
WILLIAM HAINES.

GOAT HANGERS.



4515 E—Hardwood coat rack, or shoulder, suitable for either ladies' or men's wearing apparel, with wire hook in center to hang up, one of the most sensible racks made, in lots of 100..... each, \$0.02
Less than 100..... per doz., .30

CEDAR WOOD FAUCETS.



452E—The only faucet worth using. Made of clear cedar, true bored and tested taps.

7-inch..... per doz., .60
8-inch..... per doz., .70
9-inch..... per doz., .82

WARNER'S CROWN FAUCET.

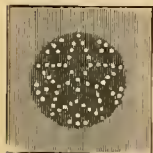


This standard faucet is too well known to require comment; it sells wherever shown; has metal key and is leather lined.

40E—7½-inch..... per doz., .93
41E—9-inch..... per doz., 1.20

WOOD CHAIR SEATS.

First quality goods, made of 3 layers of veneer laid cross grain, which gives them stiffness and prevents splitting.



Square, Birch.
Square, Birch.

Ball Top, Birch.

12 inch.....	\$0.35	16 inch.....	\$0.52
13 inch.....	.38	17 inch.....	.62
14 inch.....	.40	18 inch.....	.72
15 inch.....	.45	20 inch.....	.84

Square, Imitation Walnut.

15 inch.....	\$0.48	17 inch.....	.66
16 inch.....	.53	18 inch.....	.75

Ball Top, Birch.

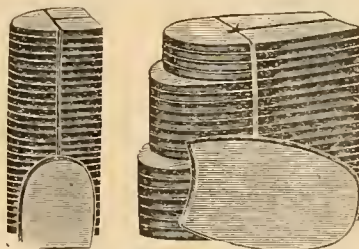
12 inch.....	\$0.35	16 inch.....	.52
13 inch.....	.38	17 inch.....	.62
14 inch.....	.40	18 inch.....	.72
15 inch.....	.45	20 inch.....	.84

Ball Top, Imitation Walnut.

13 inch.....	\$0.41	16 inch.....	.53
14 inch.....	.42	17 inch.....	.66
15 inch.....	.48	18 inch.....	.75

LEATHER HEELS AND SOLES.

Our Hemlock leather soles are guaranteed by the best tanner in the country to be the best value for the money. 1 dozen pairs—rights and lefts—in package, sizes, to 12.



407E—Best hemlock leather heels, medium weight, shaped and cut ready for use, 1 dozen pairs in bundle..... per doz. pairs, \$0.35

410E—4 inches thick to the dozen, per doz., .98

411E—Soles 4½ inches to the dozen, per doz., 1.25

412E—Soles 5 inches to the dozen, per doz., 1.30

413E—Soles 6 inches to the dozen, per doz., 1.50

414E—Soles 7 inches to the dozen, per doz., 1.60

"NESCO" AIR TIGHT

WOOD HEATERS.

Not Lined.

418E—Size 17x-14x13¼, collar 5 inches, weight (crated) 14 pounds...each, .80

421E—Size 19¼x-17¼x15½, collar 5 inches, weight (crated) 20 pounds, each, 1.10

424E—Size 23½x-23x17½, collar 6 inches, weight (crated) 28 pounds.....each, 1.35

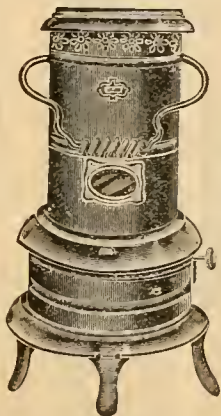
Lined.

4118E—Size 17x14x13¼, collar 5 inches, weight (crated) 14 pounds, each, .95

4121E—Size 19¼x17¼x15½, collar 5 inches, weight (crated) 20 pounds.....each, 1.25

4124E—Size 23½x23x17½, collar 7 inches, weight (crated) 28 pounds, each, 1.60

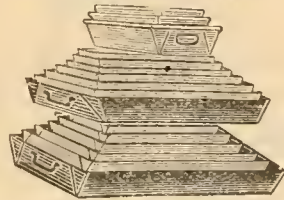
THE "LIBERTY" HEATER.



430E—This heater has all the latest improvements, stands 25 inches high, best Russian iron drum, the celebrated H. B. & H. brass oil fount, new indicator, patent smokeless device, 9-inch double thick circular wick, stamped steel frame, base and feet, black finish, 1 in crate, each, 3.25

431E—As above, but fully nickeled, 1 in crate.....each, 3.45

DRIP OR ROASTING PANS.



Made of best quality sheet iron, extra heavy.

No.	Size.	Per doz.
1.....	6x9.....	\$0.46
2.....	7x10.....	.50
3.....	8x10.....	.53
4.....	9x12.....	.69
5.....	10x14.....	.90
6.....	11x16.....	1.10
7.....	12x17.....	1.25
8.....	14x15.....	1.25
9.....	16x17.....	1.60

DRESS SUIT CASES.



471E—Patent waterproof material, rich olive color, good brass finished spring lock and side bolts, riveted leather corners, will last for years. 22 in., \$0.80 | 24 in., \$0.85 | 26 in., \$1.00



4166E—Patent "Keratom" waterproof, imitation leather, extra deep, 8 inches deep by 13 inches wide, English handle, side straps and side bolts, inside shirt pocket. 22 in...each, \$2.80 | 26 in... each, 3.15
24 in...each, 2.90

TELESCOPE CASES.



4B0E—Best quality canvas, cloth lined, leather corners, copper nailed, solid leather straps and handle, 1-16, 1-18, 1-20, 1-22, sold by nest of 4 only..... per nest, 1.65

TRUNKS.



425E--Top covered with embossed zinc and sheet iron, front covered with embossed zinc and black iron, 5 hardwood slats across top, 1 along the front, good lock and side bolts, corner irons, tray with covered partition, wooden bottom protected with 3 slats on rollers. 24 in...each, \$1.19 | 30 in...each, \$1.50
26 in...each, 1.25 | 32 in...each, 1.70
28 in...each, 1.30 | 34 in...each, 1.90

CONFIDENT OF A SAVING OF 15 TO 20 PER CENT.


Edneyburg, Ky., July 27, '05.
Baltimore Bargain House:

Gentlemen—This is the second bill of goods I have bought from you this year and I am very well pleased with the goods. I think I can save money by buying of you. I am confident that I can save from 15 to 20 per cent.

Respectfully,
H. M. SNYDER.

TINWARE.

STAMPED PIE PLATES.

		Per doz.
	6, plain.....	\$0.14
	7, plain.....	.14
	8, plain.....	.17
	9, plain.....	.20
10, plain.....	\$0.25	
9, deep.....	.24	.29

STAMPED RINSING PANS.

Plain.



8-quart.....	per doz.,	.92
10-quart.....	per doz.,	1.05
14-quart.....	per doz.,	1.25
17-quart.....	per doz.,	1.63

WASH BOWLS.

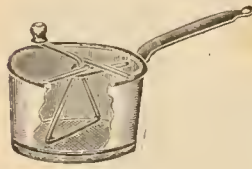


6, plain.....	9 1/2-in.....	.30
7, ".....	11 1/2-in.....	.39
8, ".....	13 1/2-in.....	.52

FLOUR SIFTERS.




41E, 70c Doz. "Giant" Sifter.
 41E—"Gem," Acme agitator, will not pull apart or drag in revolving, 2 dozen in case..... .70
 The "Giant"—Heavy tin, patent agitator, 1 dozen in case..... .75
 443E—IXXX tin, heaviest sifter made, Hunter style, side handle, 4 extra strong agitators, all polished, 1 dozen in case..... 1.67
 44E.—The "Perfection," patent spring bottom, opens and closes with spring, 1 dozen in case.... 1.75



410E—Combination sifter and strainer, heavy tin, heavy wire agitator, and riveted handle..... .89

MILK PANS.

	1/2-pint.....	.12
	1-pint.....	.15
	1-quart.....	.19
	2-quart.....	.28
	3-quart.....	.32
4-quart.....	\$0.40	
6-quart.....	.53	
	8 quart.....	.62
	10-quart.....	.75

NO COMPLAINTS TO MAKE.

Wilcox, Ga., June 4, '05.
 Baltimore Bargain House:
 Gentlemen—No complaints to make. Goods and prices are O. K. Will give you more business.
 Respectfully, H. P. WILCOX.



GALVANIZED WATER PAILS.

Extra heavy protected bottoms, riveted ends, heavy bail handle.

8-quart.....	\$1.20	Less quantity. Per doz. \$1.35
10-quart.....	1.35	1.50
12-quart.....	1.58	1.70
14-quart.....	1.82	1.85

SPECIAL VALUE IN

5-GALLON OIL CANS.

You can sell a 75c can for 50c. We purchased the made up stock of the "American Can Co.," the heaviest and best galvanized oil cans on the market, and offer them at less than cost of manufacture.

455E—Eureka, 5-gallon oil or gasoline can, made of extra heavy galvanized iron, has 2 swedges on body, heavy breast. wide spout, expansion screw cap, in lots of 1 dozen...per doz., 3.75
 1/2 dozen lots, per doz., 3.85



455E, \$3.75 Doz.

456E—As above, with compression faucet, best can made, today's price \$4.95; our under-selling price, in doz. lots, per doz., 3.65
 1/2 dozen lots, per doz., 3.85

RAZORS.



1181E—Fancy embossed rubber handle, white celluloid tips, 5/8 inch, "Extra Hollow Ground" etched on blade, square point, fully polished, each in gilt stamped case, (doz., \$4.50); each, \$0.40

SCISSORS.



1002E—Flyer, full nickel plated with brass screw and nut, put up 1 dozen in box, assorted sizes, 6, 7, 8 and 9 inches long, would be cheap at \$1.25; our price, per doz., .69

REVOLVING RAZOR

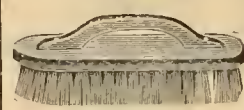
STROP ASSORTMENT.

1225E—Corrugated tin wire rack, revolving top, holds 1 dozen strops suspended on hooks, can be hung over the counter by wire or cord attached to ceiling, assortment consists of 1 dozen strops of various makes and styles, horsehide, calfskin and porpoise, elegant value to sell at 25c each, per assortment, 2.00



STOVE BRUSHES.

4550E—Dauber end, 4 rows of stiff black tampico, inside rows white, outside rows black, solid hardwood 9-inch back, 1/2 dozen in package.....per doz., 70c



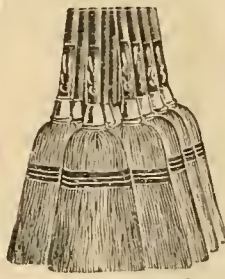
SOLID BACK SCRUB BRUSHES.

4 6 7 E—"Boss," 4 rows white tampico, ends projecting have 5 rows white tampico. solid back, per doz., \$0.68



CORN WHISK FLOOR BROOMS, "BLUE RIBBON" BRAND.

4 9 9 E—Full No. 6 Size, newlinecorn whisk, weighs 16 pounds to dozen, 2-string sewing, all clear handles, per doz., 1.32
 4 9 8 E—Full No. 7 Size, weighs 18 pounds to dozen, 3-string sewing, tin cap.....per doz., 1.56
 497E—Full No. 8 Size, weighs 19 to 20 pounds to dozen, 4-string sewing, tin cap..... per doz., 2.16
 496E—Full No. 9 Size, weighs 25 pounds to dozen, 5-string sewing, tin cap..... per doz., 2.75
 497LE—Extra Large Store or Warehouse Broom, weighs 36 pounds to dozen, 5-string sewing, tin cap, per doz., 3.10



WHISK BROOMS.

4115E—Extra large and heavy, well filled, 2 strings, wire bound, plush cap, 1 dozen in box.....per doz., .85



SHOE BRUSHES.

410E—10c leader, good quality, 5 rows good stock tampico, dauber attached.....per doz., .75



HAIR BRUSHES.

188E—9 rows of pure china stiff bristles, solid back, 8 3/4 inches long, oval shape, in ebony, rosewood, cherry and walnut finishes, subject to manufacturers' imperfections.....per doz., .72



1808E—Metallic hair brush. 12 rows polished brass wire, warranted not to rust, satin finished ebonized back, shaped handle, 1/2 dozen in box.....per doz., 2.10



CHINA LIMB DOLLS.



0102E, 37c Doz.



0105E, 37c Doz.

Our Special Line of China Limb Dolls—No merchant should be without these goods the year round. Well proportioned bodies, china heads, assorted blondes and brunettes, pretty faces, painted shoes and stockings.

- 0100E—Length 6½ inches, 2 dozen in box.....per doz., \$0.21
- 0101E—Length 8 inches, 1 dozen in box.....per doz., .35
- 0102E—Length 9½ inches, 1 dozen in box.....per doz., .37
- 0103E—Length 12 inches, 1 dozen in box.....per doz., .71
- 0104E—Length 17 inches, ½ dozen in box.....per doz., 1.85

Glazed China Limb Dolls—Fine glazed heads, arms and shoes, with colored bow knots, painted feet, well proportioned bodies.

- 0105E—Length 8 inches, 1 dozen in box.....per doz., .37
- 0106E—Length 12½ inches, 1 dozen in doz.....per doz., .78
- 0107E—Length 15 inches, ½ dozen in box.....per doz., 1.15
- 0108E—Length 18 inches, ½ dozen in box.....per doz., 1.89



0113E, 37c Doz.

Our Bargain Colored Body China Limb Dolls—Bodies made of red, white and blue cloth, assorted, well proportioned, unglazed bisque heads with painted features, painted shoes and stockings; always prove good sellers.

- 0113E—Length 9½ inches, 1 dozen in box.....per doz., .37
- 0114E—Length 11½ inches, 1 dozen in box.....per doz., .78
- 0115E—Length 14½ inches, 1 dozen in box.....per doz., 1.15

FRENCH DRESSED DOLLS.



0801E, \$2.25 Doz.



0802E, \$2.25 Doz.



0807E, \$3.85 Doz.



0809E, \$3.85 Doz.

0801E—Length 12 inches, fine modeled bisque head, glass eyes, painted eyebrows, visible teeth, long curly blonde and brunette hair, jointed arms and limbs, silk finished plaited skirt, with loose front shirtwaist and sateen collar-ette trimmed with gold braid, white shoes and stockings with nickel buckles, large bonnet to match costume.....per doz., \$2.25

0802E—Length 12 inches, new modeled bisque head, glass eyes, visible teeth, blonde or brunette hair, fancy costume of good quality material, shoes and stockings with metal buckles, bonnet to match costume...per doz., 2.25

0807E—Length 14 inches, large new modeled bisque head with moving eyes, visible teeth, long blonde or brunette curly hair, jointed arms and limbs, costume trimmed with fancy colored edging and bonnet to match, real shoes and stockings, per doz., 3.85

0809E—Length 14 inches, large new modeled bisque head, glass eyes, open mouth, visible teeth, long blonde and brunette curly hair, real shoes and stockings, costume of gingham material with white front bosom with large collarette trimmed with bow knots, bonnet to match, very attractive, per doz., 3.85

French Dressed Dolls—Continued.

0811E—Length 14 inches, new modeled large size bisque head, large glass eyes, visible teeth, long curly blonde or brunette hair, real shoes and stockings, fancy shirt-waist, trimmed with lace and gold braids, loose sleeves, large bonnet to match costume, trimmed with lace.....per doz., \$3.85



0815E, \$4.15 Doz.

0815E—Length 14 inches, fine modeled bisque head with sleeping eyes, visible teeth, curly blonde and brunette hair, real shoes and stockings, silk costume, full width plaited skirt, fancy loose blouse effect shirt-waist trimmed with lace, lace collar-ette, loose sleeves, bonnet to match costume, trimmed with gold braid and bow knots.....per doz., 4.15

0816E—Length 14 inches, fine modeled large size bisque head, sleeping eyes, open mouth showing teeth, long blonde or brunette hair, real shoes and stockings, flannel costume with loose jacket and mull shirtwaist, large red bonnet trimmed with ribbons to match costume.....per doz., 4.15

SEWING LAMP.

A 502E—Crystal embossed, with chimney to match, complete with No. 2 burner, 19 inches high, packed 10 in barrel (barrel, 35c extra), each, 42c

"IRVINGTON" KLONDIKE GOLD BANDED ASSORTMENT.



Rich press cut pattern, extra heavy gold bands burnt in and will not wash off; a very attractive number and one of our best sellers; the assortment contains the following:

- | | | |
|---------------------------|--------------------------------------|--------------------------|
| 12 5-inch Nut Bowls. | 6 Cream Pitchers. | 12 5½-inch Jelly Dishes. |
| 12 7½-inch Plates. | 12 5-inch Berry Dishes—square shape. | 12 Large Tumblers. |
| 6 handled Olives—crimped. | 6 4-inch Rose Bowls. | 12 Goblets. |
| | 6 Sugar Dishes. | |
- Total, 8 dozen pieces in barrel.....per doz., 82c
Barrel, 35c extra

West Union, Ills., April 10, '05.
Baltimore Bargain House:
Gentlemen—I consider the B.B.H. one of the lowest priced houses in the country, taking quality into consideration. Yours respectfully,
E. A. SNYDER.

LADIES' FOLDING WORK TABLES.

An article needed in every household, and one that will draw business if sold at the right price. Made of selected stock, oil finish, has yard measure, patent folding device, and fancy turned legs.



035NE—Size 19x36, 24 inches high, 1 dozen in crate, per doz., \$4.25

036NE—Size 18x36, 24 inches high, varnished, hardwood top, polished, has yard measure, legs on hinges, patent folding device, 6 in crate... each, .60

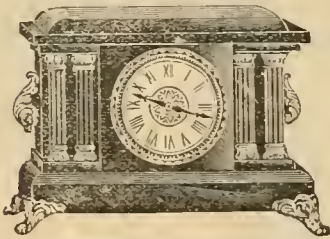
ALARM CLOCKS.



Columbia Nickel Alarm Clock—30-hour time, 4½-inch dial, made by one of America's foremost manufacturers. An alarm clock is worthless unless it gives satisfaction. We

guarantee every one of these clocks. You may pay others more for the same goods, but get no better results.....each, .47½

ENAMELED WOOD CLOCKS.



Climber—Black enamel wood, a good imitation of iron, 4 columns, highly bronzed in green, gilt feet and handles, runs 8 days with one winding, size 15½x11¼; great sellers.....each, 2.85

FANCY GOLD PLATED CLOCKS.

Each in pasteboard box.



Imp—Gold plated, rich and handsome, good quality 3-inch ivory dial, bevel plate crystal, gilt reflector, runs 32 hours with one winding, dimensions 11x8...each, .80

KENTUCKY MERCHANT BUYS HERE TO ADVANTAGE.

Yosemite, Ky., July 5, '05.

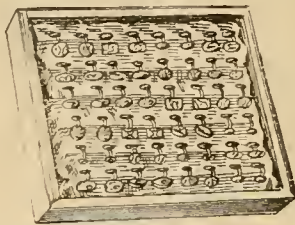
Baltimore Bargain House:

Gentlemen—Goods received and opened up all O. K. We are well pleased with the line. After paying freight we find we can buy goods from your house and make money by doing so. Very respectfully,

E. E. KELSAY.

JEWELRY, Etc.

ROLLED AND GOLD PLATE LINK CUFF BUTTONS.



9032E—An assortment of link cuff buttons, put up in fancy glass top display cabinet, size of cabinet 7¼x9¼ inches, holds 24 pairs of rolled plate lever end link buttons, in plain and Roman finishes, and chased and stone set, per doz. pairs, \$0.85

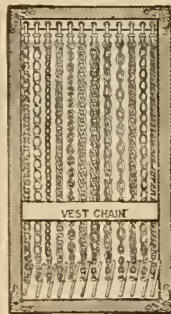
METAL WATCH FOBS.



952E—Assortment of 6 beautiful designs in metal fobs to retail at 10c, doz., .75

PAD CHAINS.

1 dozen assorted designs on fancy easel display pad.



9629E—Electro gold plate, 12 assorted styles, on panel wood display pad, spring swivel, per doz., .70

BROOCH PINS.



96E, 35c Doz.



9410E, 65c Doz.

96E—Heart design, plain polished, set with white stone...per doz., .35

91E—Neat gilt and enameled designs, set with white stone...doz., .35



9898E, 20c Doz.

9410E—Cluster shape, set with 10 brilliant white stones, colored stone in center, per doz., .65

HAT PIN.

9898E—Twisted wire, set with colored stones, per doz., .20

ASSORTMENTS OF LADIES' FANCY SET RINGS

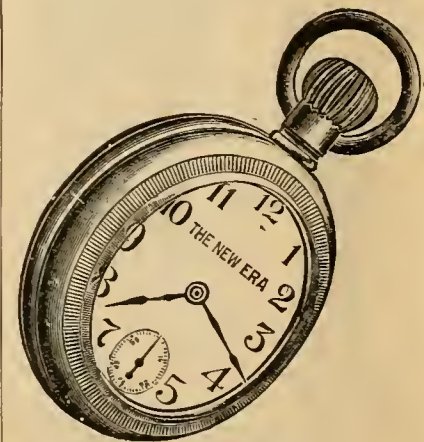


9188E—Magnificent assortment of fancy single, double and triple setting rings, latest patterns, can be sold at 10c and 15c each, assorted sizes; order a tray and you will want more; put up 6 dozen in fancy display tray... per doz., \$0.80

WATCHES.



"B. B. H. Special"—Thin model, 16-size, solid nickel case, hinge back, movement has lever escapement, lantern pinions, hour, minute and second hands, winds and sets in back, runs 30 to 36 hours with one winding, printed guarantee for 1 year with each watch, made by one of America's most renowned manufacturers, each in box.....each, .57½



9550E—"Our Banner," 18 size, extra heavy silveroid case, dust-proof, will not tarnish, screw back and bezel, fitted with 7-jeweled New Era American movement, stem-wind, lever set, each, 1.85

DRUG DEPT.

FLAVORING EXTRACTS AND BOTTLED GOODS.

No. 10 goods assorted in gross lots, \$7.50. Packed 1 dozen in wood box.

	Per doz.	Per gross.
No. 10—Lemon..	\$.65	\$7.50
No. 10—Vanilla..	.65	7.50
No. 10—Orange..	.65	7.50
No. 10—Banana..	.65	7.50
No. 10—Pineapple	.65	7.50
No. 10—Strawberry..	.65	7.50
No. 10—Cinnamon.....	.65	7.50
No. 10—Peppermint.....	.65	7.50
No. 10—Spirits Camphor...	.65	7.50
No. 10—Solution Carbolic Acid, for medicinal use...	.65	7.50
No. 10—Purgative.....	.65	7.50
No. 10—Laudanum.....	.65	7.50
No. 10—Spirits Nitre.....	.65	7.50
No. 10—Tincture Iron.....	.65	7.50
No. 10—Tincture Iodine....	.65	7.50
No. 10—Glycerine.....	.65	7.50
No. 10—Tincture Arnica....	.65	7.50
No. 10—Syrup Ipecac.....	.65	7.50
No. 10—Syrup Squills.....	.65	7.50
No. 10—Syrup Rhubarb....	.65	7.50
No. 10—Cox's Hive Syrup...	.65	7.50
No. 10—Golden Tincture....	.65	7.50
No. 10—Balsam Copaiba....	.65	7.50
No. 10—Benzine.....	.65	7.50
No. 10—Castor Oil.....	.65	7.50
No. 10—Camphorated Oil..	.65	7.50
No. 10—Sweet Oil.....	.65	7.50
No. 10—Oil Tar.....	.65	7.50
No. 10—Spirits Turpentine.	.65	7.50
No. 10—Jamaica Ginger, a concentrated extract for medicinal use.....	.65	7.50
4 Ounces Jamaica Ginger, put up in picnic flask.....	.70	8.00
No. 5—Vanilla.....	.32	3.75
No. 5—Lemon.....	.32	3.75
No. 5—Cinnamon.....	.32	3.75
No. 5—Peppermint.....	.32	3.75
No. 5—Laudanum.....	.42	4.90
No. 5—Purgative.....	.42	4.90
No. 5—Spirits Nitre.....	.42	4.90
No. 5—Tincture Iron.....	.42	4.90
No. 5—Glycerine.....	.42	4.90
No. 5—Castor Oil.....	.42	4.90
No. 5—Sweet Oil.....	.42	4.90
No. 5—Spirits Turpentine..	.42	4.90
No. 5—Asafoetida.....	.35	4.00
No. 10—Asafoetida.....	.65	7.50
No. 5—Sugar Lead.....	.35	4.00
Godfrey's Cordial.....	.39	...
British Oil.....	.39	...
Bateman's Drops.....	.39	...
Calomel.....	.58	...
Blue Mass.....	.39	...
Turlington's Balsam.....	.39	...
Mercurial Ointment.....	.39	...
Oil Cloves.....	.65	...
Oil Cinnamon.....	.65	...
Oil Lemon.....	.65	...
Quicksilver.....	.72	...



TALCUM POWDER.
Mennen's Borated Talcum..... per doz., \$1.35

HEAVY DRUGS.

Alum (lump).....	per pound,	\$0.0234
Asafoetida, Gum.....	per pound,	.30
Asafoetida, Purified—This preparation is packed 1 pound in box; each ounce is wrapped and labeled.....	per pound,	.35
Borax (lump).....	per pound,	.0934
Borax (powdered).....	per pound,	.0934
P20—Borax (powdered); "20-mule Team,".....	per doz.,	.42
Bluestone.....	per pound,	.0634
" in bbls., 400 lbs.,	per pound,	.06½
P920—Camphor Balls, packed in sliding boxes containing about 75 balls..(gross boxes, \$4.25);	per doz. boxes,	.37
Camphor Balls.....	per pound,	.03½
" in bbls.; 200 lbs.,	per pound,	.03
Copperas.....	per pound,	.0134
" in bbls., 400 lbs.,	per pound,	.01
Cream Tartar, chemically pure,	per pound,	.30
Cream Tartar, extra No. 1; extra fine, in 6-lb. boxes.....	per pound,	.14
Flaxseed Meal.....	per pound,	.0334
" in bbls.; 200 lbs.,	per pound,	.03¼
Flaxseed.....	per pound,	.0434
Gum Arabic.....	per pound,	.38
Insect Powder (Persian), pound,	per pound,	.22
Indigo, best quality.....	per pound,	.65
Potash, Bromide, in 1-lb. packages.....	per pound,	.42
Potash, Bromide, in ½-lb. packages.....	per pound,	.44
Potash, Chlorate.....	per pound,	.16
Rosin.....	per pound,	.0234
Sage (ground).....	per pound,	.10
Salts, Epsom.....	per pound,	.0134
Salts, Epsom, in bbls., 325 lbs.,	per pound,	.0136
Salts, Epsom, "Crystal" Brand; put up in ¼-lb. cartons; 4 dozen in case.....	per case,	.88
Salts, Glauber.....	per pound,	.01½
Salts, Rochelle.....	per pound,	.24
Saltpetre (crystal); chemically pure.....	per pound,	.07½
Saltpetre (common).....	per pound,	.06
Saltpetre (powdered), per pound,	per pound,	.07½
Senna Leaves.....	per pound,	.14
Seed, Celery.....	per pound,	.12
Seed, Mustard (white).....	per pound,	.07½
Soda, Phosphate (granular); 1-lb. packages.....	per pound,	.12
Sugar Lead.....	per pound,	.16
Sulphur.....	per pound,	.03
Sulphur, in bbls., 175 lbs.,	per pound,	.0234
Sulphur (refined) ½-lb. cartons; 1 dozen in box.....	per doz.,	.38

PETROLEUM JELLY.

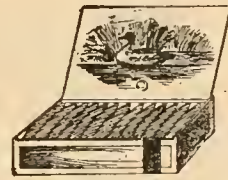


P46E, 24c Doz.

1 dozen in wood box, (gross, \$3.25); per doz., .28
P47E—Strictly pure 5-ounce bottles, otherwise same as P46E, can be sold at 5c, 1 dozen in wood box, (gross, \$4.50); per doz., .38
P45E—Put up in 1-pound jars, metal tops, 1 dozen in wood box...doz., .75

CIGARS, TOBACCO, Etc.

CIGARS.



Sports.

ritanos shape, well made, good combination filler, Connecticut wrapper, 50 in box.... per 1000, 10.00



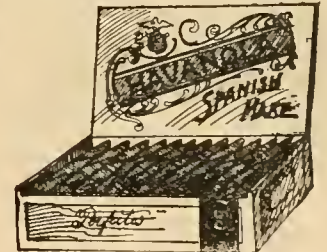
General Goodfellow.

selected and well cured stock, Connecticut wrappers, has no equal as a trade maker, 50 in box, (100, \$1.50); per 1000, 14.00



American Eagle.

ways please, 50 in box, (100, \$1.75); per 1000, 17.00



Havana—The greatest 5c cigar on earth; latest Cuban Perfecto shape, best grade long Havana filler, Sumatra wrapper, 4½ inches, 50 in box.... per 1000, 34.00

STOGIES AND CHEROOTS.

Spanish Seed Stogies—Long filler, hand-made, extra quality, 6 inches, 100 in drum shape box, per 1000, 11.00

Old Virginia Cheroots—Fine quality to retail 3 for 5c, 250 in box, 1000, 11.60

CIGARROS AND CIGARETTES.



Chiquita.

Chiquita Cigarettes—Long filler, an excellent short smoke, 10 in bundle, 100 in box, tobacco wrapped, per 1000, 7.00

Turban Cigarros—10 in pack, tobacco wrapped..... per 1000, 3.50

Recruit Cigarettes—10 in pack, tobacco wrapped..... per 1000, 3.80

Drum—20 in pack, paper wrapped, per 1000, 1.80

Sweet Caporal—10 in pack, paper wrapped..... per 1000, 3.80

Turkish Trophies—10 in pack, cork tip, paper wrapped.... per 1000, 7.60

SMOKING TOBACCOS.
Granulated.



Royal Mixture—2½-ounce linen bags; retails at 5c per bag; a sweet smoke; will not bite the tongue; 5 pounds to carton...per pound, \$0.23

Old Virginia Mixture—16-ounce packs.....per pound, .20
In 25-pound lots.....per pound, .19

Victory—2½-ounce bags, per pound, .26

Wah Wah—1½-ounce bags, pound, .33

Duke's Mixture—1½-ounce bags, per pound, .37

Blackwell's Durham—1-ounce bags, per pound, .63

PLUG AND PLUG CUT TOBACCOS.

Town Talk—14-ounce plug, 14 pounds to box.....per pound, .28
Sensation—1½-oz. foil pack., pound, .38

PIPES.



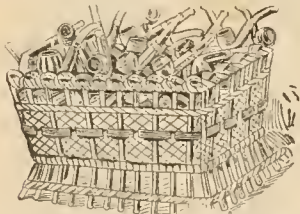
X248E, 75c Doz.



X5018E, 72½c Doz.

styles and sizes, bent and straight stems, rubber mouthpieces, greatest values ever offered to retail at 10c; 3 dozen in box...per doz., .72½

X13E—French briar, assorted styles and shapes, new designs, some are carved; bent and straight horn and amber colored bits; excellent 20c and 25c values; 1 dozen in box, doz., 1.25



X502E—French briar, first quality and best makes, silver and gold mountings with horn, amber colored and hard rubber bits, 2 dozen in wicker basket.....per doz., 1.85

STATIONERY.

COMPOSITION BOOKS.



S611E, 39c Doz.

S611E—"Honor Bright," large size, 7½x9½, 72 pages of extra fine watermarked ink paper, sewed back, neat cover, per doz., \$0.39



S273E, 41c Doz.

S273E—Duckaline cover, cloth back, 144 pages of fine laid white paper, size 6½x8½; one of our best sellers.....per doz., .41

PENCIL BOXES.



polished, assorted colors, contains lead and slate pencils, pen and holder, ruler and chalk, size 2½x1½x7½.. (gross, \$5.00); per doz., .43



S7047E—Ebony polished, fancy japanned decorations on cover, contains lead and slate pencils, pen and holder, ruler and chalk, size 2½x3½x1½.....per doz., .73

CARTER'S INKS.



S85E—Black letter, 2-oz., wide mouth, ¼ gross in case, per gross, 2.95

LEAD PENCILS.



S140E—Eagle, rubber inserted, per gross, .80



S50E—Eagle, express, red polished, nicked tip and rubber, per gross, 1.10



S517E—American Autograph, pebbled surface, natural finish, No. 2 lead.... (gross, \$2.10); per doz., .18



S557E—Velvet, hexagon, glass finish oak, gilt cap rubber tip, finest No. 2 lead (gross, \$4.20); per doz., .36

PENCIL TABLETS.



Smooth finish pencil paper, assorted covers with photographs of leading universities and colleges, with history of same on back.

S1020E—Size 6x9, 300 pages.. doz., .39

S1020DE—Double ruled...per doz., .39

INK TABLETS.

American Superfine—Extra white wove paper, extra heavy, handsome cover, in dark blue and gold on blue glazed paper.



S3223E—Note, size 5x8, 200 pages, per doz., \$0.43

S3224E—Packet, size 6x9, 144 pages, per doz., .43

S3225E—Letter, size 8x10, 80 pages, per doz., .43

Dorchester Linen—Ruled, extra finish, watermarked linen paper, handsome cover in green embossed with gold.



S5061E—Note, size 5x8, 300 pages, per doz., .69

S5062E—Packet, size 6x9, 216 pages, per doz., .69

S5063E—Letter, size 8x10, 120 pages, per doz., .69

BOX PAPER.



S600E, 38c Doz. Boxes.

24 sheets and 24 envelopes.

S600E—"Garland," ruled, good weight, full count, assorted colors, size of box 7½x5x1½, per doz. boxes, .38



S2608E, 72c Doz. Boxes.

S2607E—"Brompton," Oxford size, ruled, good quality, extra weight white plate finished paper, wallet envelopes, neat box with embossed title and cover, per doz. boxes, .72

S2608E—As above, octave size, per doz. boxes, .72

CLOTH FINISH PAPER.



S2659E—Japanese lawn, superior white lawn finish paper, extra good weight, wallet envelopes, attractive cover in gold and red on white, size of box 6½x5½x1½.....per doz. boxes, .96

S2660E—As above, size 7½x5x1½, per doz. boxes, .96

CREPE TISSUE PAPER.



S189E—In lots of 100 rolls, not less than 10 rolls of a color; (per 100, \$4.40); per roll, .043

Comes in following colors:

- S00—White.
- S33—Light blush pink.
- S01—Dark blush pink.
- S02—Rose pink.
- S18—Pale coral.
- S08—Apricot.
- S19—Dark coral.
- S03—American beauty.
- S38—Violet.
- S05—Light purple.
- S06—Dark purple.
- S07—Canary.
- S09—Gold.
- S32—Orange.
- S11—Light green.
- S39—Nile green.
- S13—Apple green.
- S35—Emerald green.
- S16—Moss green.
- S36—Leaf green.
- S20—Geranium.
- S21—Cherry.
- S34—Ruby.
- S24—Light blue.
- S37—Azure blue.
- S28—National blue.
- S29—Black.

MR. FISH HAS HOOKED SOME BARGAINS.

Paint Lick, Ky., July 19, '05.
Baltimore Bargain House:
Gentlemen—The goods received from you were all O. K. in every respect. Will mail you another order soon. Thanking you for your promptness in filling order, I remain
Yours truly, W. S. FISH.

MEMORANDA BOOKS.

Duckaline covers, design in black and white check plaid, new and nobby, cloth stitched backs, extra super finished watermarked paper, \$ and c columns, corking values for 5c.

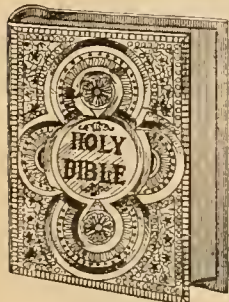


- S21E—Side open, 144 pages, size 3 3/4 x 6 1/8, per doz., \$0.36
- S22E—As above, end open.....per doz., .36
- S21LE—As S21E, pocket ledger, index in front.....per doz., .41

S21E, 36c Doz.

TABLE BIBLES.

S1850E—Size 10 1/2 x 12 1/2, self-pronouncing, all new plates, clear type, strong, handsome and durable bindings; contains Bible helps, maps, illustrations, tables and collateral matter, illuminated marriage certificate and family record for marriages, births, and deaths; bound in imitation leather, embossed and gilt title.....each, .70



TEACHERS' BIBLES.

Special Features — Concise pronouncing Bible dictionary, fully illustrated, combined concordance, contained under one alphabet; a new concordance, subject index, Bible atlas containing 12 colored maps.

S24E—Minion type, size 6 3/4 x 4 3/8 inches, 16mo, Egyptian seal, divinity circuit, round corners, red under gold edges, each, .95

S25E—Indexed, otherwise as S24E, each, 1.15



TESTAMENTS.

S109E—Ruby type, 24mo, size 5 3/8 x 3 3/8 inches, red cloth bound, cut flush....per doz., .60

S100E—Ruby type, 32mo, size 3 3/4 x 2 3/8 inches, leatherette, cut flush, round corners, red edges.....per doz., .96

S101E—As above, flexible French morocco, gold edges....per doz., 2.10

"ARLINGTON EDITION."

7 1/2c Volume.

Assortment of 50 titles that have been selected because of their great popularity. 12mo, bound in cloth. If you sample these assortments you're bound to reorder, for they never fail to sell readily and give satisfaction.



- No. 1 Assortment—50 in package, all different.
- No. 2 Assortment—50 in package, all different.

MAROON AND WHITE SERIES.

18c Volume.

Handsomest book ever offered at the price. Bound in maroon grain cloth, title on side and back in white leaf; printed on fine paper from large, clear type: every title complete and un-bridged, size 5 1/4 x 7 1/8, 12mo.



- 1 Adam Bede. Eliot.
- 2 Aikenside. Holmes.
- 3 Ardath. Corelli.
- 4 Beulah. Evans.
- 5 Black Rock. Connor.
- 6 Black Beauty. Sewall
- 7 Count of Monte Cristo Dumas.
- 8 Darkness and Day-light. Holmes.
- 9 Deemster, The. Caine.
- 10 Donovan. Lyall.
- 11 East Lynne. Wood.
- 12 Elsie Venner. Holmes.
- 13 English Orphans. Holmes.
- 14 First Violin. Fothergill.
- 15 Gold Elsie. Marlitt.
- 16 Hardy Norsman. Lyall.
- 17 Homestead on the Hillside. Holmes.
- 18 The White Company. Doyle.
- 19 Inez. Evans.
- 20 In the Golden Days. Lyall.
- 21 Ishmael. Southworth.
- 22 Ivanhoe. Scott.
- 23 Jane Eyre. Bronte.
- 24 John Halifax. Mulock.
- 25 Knight Errant. Lyall.
- 26 Lamplighter. Cummins.
- 27 Last Days of Pompeii. Lytton.
- 28 Lena Rivers. Holmes.
- 29 Little Minister. Barrie.
- 30 Lorna Doone. Blackmore.
- 31 Macaria. Evans.
- 32 Micah Clarke. Doyle.
- 33 Mildred. Holmes.
- 34 Mill on the Floss. Eliot.
- 35 Romance of Two Worlds. Corelli.
- 36 Second Wife, The. Marlitt.
- 37 Self-Raised.
- 38 Shadow of a Crime. Caine.
- 39 Silas Marner. Eliot.
- 40 Sketch Book. Irving.
- 41 Tale of Two Cities. Dickens.
- 42 Tempest and Sunshine. Holmes.
- 43 Thelma.
- 44 Uncle Tom's Cabin. Stowe.
- 45 Under Two Flags. Ouida.
- 46 Vendetta. Corelli.
- 47 We Two. Lyall.
- 48 Wide Wide World. Warner.
- 49 Window in Thrums.
- 50 Won By Waiting. Lyall.
- 51 Wormwood. Corelli.

SPECIAL PRAISE FOR OUR NOTIONS.

Anniston, Ala., March 31, '05.
Baltimore Bargain House :

Gentlemen—The bill of goods ordered from you has been received in perfect order. We are highly pleased with every article, and find them to be just as represented in your illustrated catalogue. We are now mailing you an order for a bill of notions. We find that your notions, at your low prices, enable us to meet competition without fail.

Yours truly,
LANDHAM BROS.

NOTIONS.

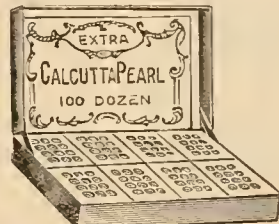
AGATE SHIRT BUTTONS.



- 1 1/2E—1 gt. gr. in pkge..\$0.31
- 120E—1/2 gt. gr. in pkge.... .59
- 130E—1/2 gt. gr. in pkge.... .69
- 140E—1/2 gt. gr. in pkge.... .79
- 150E—1/2 gt. gr. in pkge89

PEARL BUTTON ASSORTMENT.

100 dozen to assortment.



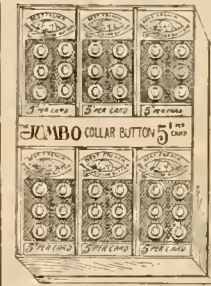
1301E—Selected pure American pearl, highly polished and finished, every button perfect, 2-hole, 1 dozen on silver foil card, 100 dozen in display cabinet, size 14 to 22-line inclusive...cabinet, 2.75

IMITATION BONE COLLAR BUTTONS



Strong and durable.
14606E—Imitation bone, pierced through cards, per gross, .14

BONE COLLAR BUTTON ASSORTMENT.



168E—“The Jumbo,” best French bone, large size, 1/2 dozen on card, to sell at 5c per card, 48 cards in cabinet, per cabinet, 1.25

GENUINE LETONITE COLLAR BUTTONS.

Warranted not to break.



- 12E, 26c Gross. 10E, 30c Gross. 13E, 30c Gross.
- 12E—White, high shank, 1 dozen on card, 1 gross in box....gross, .26
- 18E—Larger size, flat top, as above, per gross, .28
- 10E—Still larger....per gross, .30
- 12E—Black, 1 dozen on card, 1 gross in box.....per gross, .30
- 13E—Red, as above,....per gross, .30

COMBINATION COLLAR BUTTON AND SCARF RETAINER.

Can be retailed at 1c each.



1175E—Practical as a collar and sleeve button or scarf retainer, bone back, patent double lever, 1 gross in box, per gross, .65

HOOKS AND EYES.



132E—The De-Long, japanned or silvered, none better made, 2 dozen on card, 1 gross in box, sizes 0, 1, 2, 3 and 4, (great gross, \$2.85); gross, \$0.25

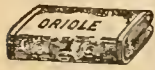
THIMBLE ASSORTMENTS.



140E—Assortment of aluminum and steel, 3 dozen on fancy bouquet design, highly lithographed display card...per card, .40

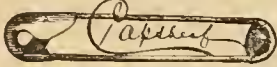
NE PLUS ULTRA BRASS PINS.

Oriole—Full count, 350 pins in each paper, 12 papers in glazed box.



F3 1/2per box, .26
SC.....per box, .29
MC.....per box, .32

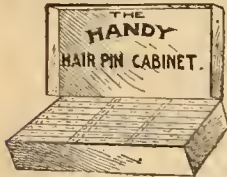
SAFETY PINS.



Capsheaf — The new "coilless" style, fully nicked, cannot catch in fabric, handsomely packed, 1 dozen on white card; an improvement over all other styles; 1 gross in box.

No. 2...gross, \$0.38 | No. 3, gross, .52
No. 2 1/2, gross, .44 |

HAIRPINS.



150E—Handy hairpin cabinet, 72 small cartons, 18 pins each, crimped and straight, sizes 2 1/4, 2 1/2, 2 3/4 and 3 inches, assorted in hinged top glazed cabinet; can be retailed at 1c carton, per cabinet, .50

MILITARY FRONT PAD

HOSE SUPPORTERS.



1708E, 85c Doz.

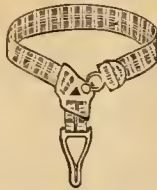


18E, \$2.00 Doz.

1708E—Military effect, mercerized pad, elastic frilled web, non-elastic bottom, nicked loop and catch, 1 dozen assorted colors in box.....per doz., .85

18E—Good quality satin pad, white jean lining, double stitched, 4 straps of best elastic lisle web, fancy nickel slides, button clasp with silk loop, assorted colors, 1 dozen in box.....per doz., 2.00

MEN'S HOSE SUPPORTERS.



1110E—Imitation of the "Brighton," fancy plaids, elastic loom web, 3/4-inch, nickel trimmings, 1 dozen pairs in box, per doz. pairs, \$0.40

CROCHET COTTON.



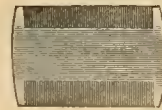
125E — A substitute for silk, sold in immense quantities; 12 spools in box, warranted 75 yards to spool, all the leading shades.....per doz., .22

126E — Assorted solid colors, 4 1/2 dozen in cabinet.....per cabinet, .92

127E—As above, variegated, per cabinet, .92

RAW HORN FINE COMBS—AMERICAN MAKE.

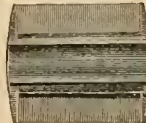
All put up 1 dozen in box.



No. 10...per doz., .20
No. 11...per doz., .22 1/2
No. 12...per doz., .25
No. 13...per doz., .27 1/2
No. 14...per doz., .30

BLONDE FINE COMBS.

(American make) fluted back.



Warranted not to warp or split, 1 dozen in box.

No. 9—Size 2 1/4 x 1 1/8....per doz., .27 1/2
No. 10—Size 2 1/2 x 1 1/8....per doz., .32 1/2
No. 11—Size 2 3/4 x 1 1/8....per doz., .35
No. 12—Size 2 7/8 x 1 1/8....per doz., .40
No. 13—Size 3 1/8 x 1 1/8....per doz., .42 1/2
No. 14—Size 3 1/2 x 1 1/8....per doz., .48

DIP PUFF COMBS.

A 25c article to retail at 10c.

131E—The new Universal combination pompadour comb; imitation tortoise shell, the dip effect, transformable to right or left, practically three combs in one, well finished, 1 dozen in box...per doz., .65

NOVELTIES IN FOREIGN DRESS TRIMMINGS.



1540E — Featherstitch pattern band trimming, fancy silk center designs, 1/2 inch wide, made in all colors, 24 yds. to piece, doz.yds., .35

HIGH GRADE FRENCH PERFUMES.



121E — Triple extract, white rose, heliotrope, violette, chypre, muguet, iris blanc and "Jockey Club," 7 assorted odors, in fancy shaped bottles, kid covered and ribbon-tied stoppers, 1 doz. in box, doz., 2.00

WHITTEMORE'S SHOE POLISH.



65c Doz. 186E, \$1.70 Case. 1 dozen in wood box...doz., \$0.65

186E—Whittemore's "Gilt Edge," for ladies' and children's, softens and preserves the leather, holds the luster longer than any other; in large bottles, each in leatheroid telescope box, 1 dozen in wood case.....per case, 1.70

LADIES' WRIST BAGS.

1 4 1 9 5 E—Giant 35c seller. Falkland grain, gusseted ends, lined, 8 - i n c h square nickel frame and Vienna handle, size 9x4 1/2 inches, black or brown, 1/2 dozen in box, per doz., 2.00



14210E—Fine walrus grain leather, 2 side compartments, 1 center frame compartment, sateen lined, square gilt frame, plum knobs and Vienna handle caps, and neat Vienna handle, strap and button fastener closing all pockets, size 8 1/2 x 5 1/2 inches, black and brown assorted, 1/2 dozen in box.....per doz., 4.50



13007E—Russian calf, 3-ball fancy polished nickel frame...per doz., .40
13021E — Extra large black kid purse, 4-ball nickel frame...doz., .85

PURSES.



13007E, 40c Doz.



13021E, 85c Doz.,

13007E—Russian calf, 3-ball fancy polished nickel frame...per doz., .40
13021E — Extra large black kid purse, 4-ball nickel frame...doz., .85

A NEW CUSTOMER GIVES HIS OPINION.

Sheffield, Ala., Aug. 11, '05. Baltimore Bargain House:

Gentlemen—I am a new customer. Have only been buying from the B. B. H. since last March. However, the goods received from you in that time have opened up to my entire satisfaction, and I find some excellent values in your Notion Department, as well as bargains in the full line.

Yours truly,
I. LESTER FOSSICK.

We Have No Traveling Salesmen!

THOSE WHO CLAIM TO REPRESENT US ARE SWINDLERS.

It should be pretty well understood, ere this, that the Baltimore Bargain House has no drummers on the road, but every once in a while we hear that someone is taking orders, or delivering goods, under the claim that he represents us.

We have recently heard of a party of young men, hailing from Baltimore, who are traveling about with tents and wagons. They pitch their tents and hang up signs saying that they represent the Baltimore Bargain House, and sell at wholesale or retail.

These persons have absolutely no connection with us in any manner or form. Do not let them mislead you or impose upon you.

Send for Our 160-Swatch Clothing Book

A STOP-OVER PRIVILEGE OF TEN DAYS

will be allowed at Baltimore on all tickets if availed of so as to reach destination by continuous passage within final return limit designated on your ticket, provided that you simply notify the train conductor of your desire to stop, and on arrival at station immediately deposit your ticket with the station ticket agent, who will give you a receipt for same. Tickets so deposited will be surrendered at any time within 30 minutes of the departure of the train on which the owner wishes to leave.

This stop-over privilege may be enjoyed on the return trip from Atlantic City, or any other seaside resort, within the final limit of your ticket, provided that you notify train conductor and deposit your ticket with depot ticket agent immediately upon arrival.

NEW YORK INDIFFERENT

Regards Southern Merchants As Too Small Buyers.

BALTIMORE CATERS TO THEM

Goods Specially Adapted To The South Are Only To Be Found In Baltimore Stocks.

Supplying The South's Needs.

New York merchants, in reaching out for the trade of all sections, keep in stock only goods of a general nature.

Baltimore merchants, having studied the needs of the South for years, cater specially to its wants.

As a consequence Southern merchants who go to New York are confronted with a mass of goods which they do not want, while in Baltimore they are shown at once just the articles adaptable to their trade.

In explanation of their position the New Yorkers say they will sell to the Southern merchants just as they will to any other person who comes along, but make no special effort for Southern trade, as it is too small "for us big fellows."

Baltimore merchants not only have the goods which the Southern merchants want, but they are personally interested in the progress of the South and in all that pertains to it.

LOSING TO BALTIMORE

New York In Alarm Over Decline Of Southern Trade.

A HANDICAP OF 25 PER CENT.

Striking Facts And Figures Gathered On The Scene That Point A Moral For The Shrewd Buyer.

Buyers Should Note This.

An investigation by a staff correspondent of THE SUN shows that the average yearly cost per square foot of floor area used by 24 leading wholesalers and manufacturers in Baltimore and New York is 16 cents for Baltimore and 51 cents for New York.

Other expenses of doing business in New York are at least 25 per cent. higher than here.

In order to make a profit the New Yorker, allowing 5 per cent. for the larger volume of trade he hopes to get, charges about 20 per cent. more than a Baltimore merchant in the same line. Of course, the customer pays the difference.

It is admitted that Baltimore is winning from New York in the fight for Southern trade. The argument is put forth that Gotham will always have a large part of this trade because a buyer can have a "good time" in the metropolis. It is pointed out that the buyer will do better to trade in Baltimore and then, with what he can save through the lower prices here, he will have a much larger sum for his "good time" in New York, if he must have it.

It pays to trade in Baltimore.

READ WHAT THE NEWSPAPERS SAY!

THE advantage that Baltimore, as a market, holds over New York is so pronounced that the leading newspapers are discussing the subject openly.

The Baltimore "Sun's" staff correspondent in New York admits that the New York wholesale house is handicapped at least 25 per cent., as compared with a house of similar character in the Monumental City.

Because of lower rents and more economical methods of trading, the Baltimore wholesaler can sell the same goods as the New Yorker at much lower prices.

"It pays to buy in Baltimore"—and it pays best of all to buy of the

BALTIMORE BARGAIN HOUSE.