

FALL ^{AND} WINTER
1888-9

FOX ^{AND} KELLY'S
FASHION
CATALOGUE
ILLUSTRATED

765-767 & 769 Broadway,
Cor 9TH Street New York.

Feb
 1917
 1720
 1719
 72

INDEX.

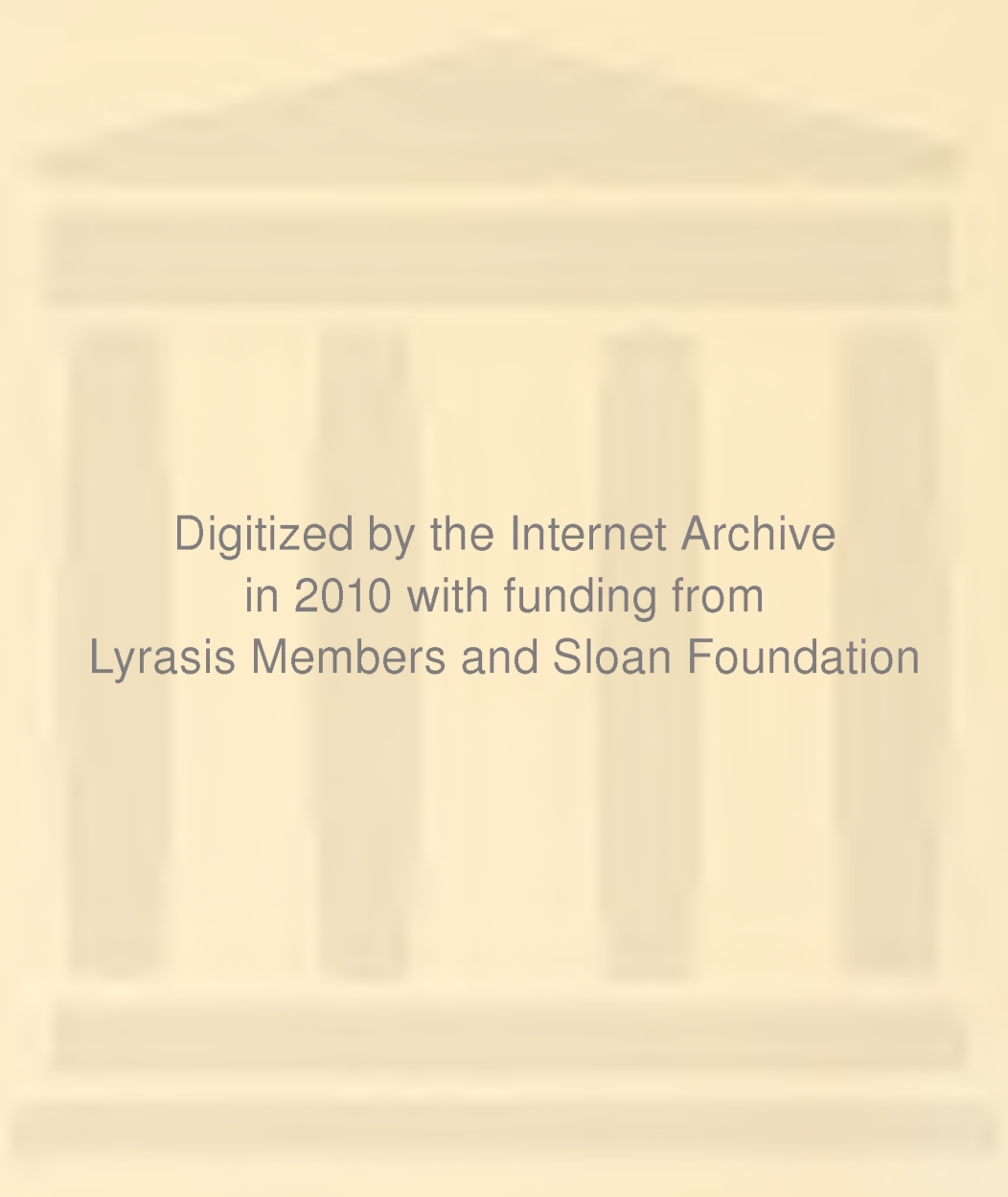
B		M	
Bed Spreads.....	48	Mourning Goods.....	20
Black Dress Goods.....	20	N	
Blankets.....	25	Neckwear, Men's.....	28
Boots and Shoes.....	69 and 72	Night Gowns.....	58 and 59
Buttons.....	53	Night Shirts, Men's.....	31
C		Notions.....	57
Cardigan Jackets—Ladies' and Gents'.....	32	P	
Chemises.....	58 and 59	Piano Covers.....	48
Cloaks.....	2 to 10	Portiere Curtains.....	42
Cloths.....	19	Pillow Shams.....	62
Cutlery.....	68	R	
Collars and Cnffs, Ladies'.....	56	Ribbon Velvets.....	49
Collars and Cnffs, Men's.....	29 and 30	Ribbons.....	49
Corset Covers.....	62	S	
Corsets.....	63 and 64	Shirts.....	32
Custom Order Shirts.....	32	Shirts, Electric.....	31
Children's Caps, etc.....	15	Shirt Waists, Boys'.....	32
D		Silks.....	21
Domestics.....	23 and 24	Skirts.....	16 and 60
Drawers.....	61	Suspenders.....	27
Dress Goods.....	17 and 18	Shawls.....	19
Dress Trimmings.....	54 and 55	T	
Druggets.....	48	Table Covers.....	45 and 48
E		Table Cloths.....	24
Embroidery.....	52	Table Damask.....	24
F		Towels.....	23
Furs.....	65	U	
Flannels.....	25	Umbrellas.....	49
G		Underwear, Ladies' and Children's.....	33
Gloves.....	36	Underwear, Ladies' Muslin.....	58 to 61
H		Underwear, Men's.....	27
Handkerchiefs, Ladies' and Gents'.....	26	Upholstery.....	37 to 47
Hosiery.....	34 and 35	V	
J		Velveteens.....	22
Jackets.....	9 and 10	Velvets.....	22
Jerseys.....	11 to 13	W	
L		White Goods.....	24
Lace Curtains.....	38 and 39	Wraps.....	2 to 10
Laces.....	50 and 51	Wrappers.....	14
Linens.....	23 and 24	Window Shades, etc.....	46
Leather Goods.....	66 and 67		
Lambrequins.....	43		

SPECIAL NOTICE.

On all orders of \$10 and over we will allow 5 per cent. discount in lieu of express charges.

The logo for The Winterthur Library, featuring the text "The Winterthur Library" enclosed in an oval border.

The
Winterthur
Library



Digitized by the Internet Archive
in 2010 with funding from
Lyrasis Members and Sloan Foundation

<http://www.archive.org/details/foxxkellysfashion00foxx>

Instructions for Ordering Goods.

by Careful Attention to the following, Delays and Errors may be Avoided.

PLEASE WRITE YOUR NAME IN FULL GIVING POST-OFFICE, COUNTY AND STATE; ALSO STREET AND NUMBER, IN CITIES AND LARGE TOWNS; Amount of money enclosed; also specify if goods are to be forwarded by EXPRESS, MAIL or FREIGHT; if by EXPRESS, name of post office; if by MAIL, registered or not.

We advise Registration, as it is an almost sure guarantee against loss. It will cost 10 cents extra postage.

Mail Information.

Under the present POSTAL LAWS Parcels weighing four ounces, or less, may be delivered through the Mails at the rate of 3 cents per ounce. NO LETTER OF INSTRUCTIONS OR WRITING OF ANY KIND IS ALLOWED INSIDE OF A PACKAGE UNDER PENALTY OF SUBJECTING THE ENTIRE PACKAGE TO LETTER POSTAGE—TWO CENTS PER OUNCE.

If the money is remitted with the order, we can send by Mail, in which case a sufficient amount ADDITIONAL must be enclosed to prepay postage. Otherwise, Goods will be forwarded by Express, or we shall write parties, whichever in our judgment will be mutually beneficial.

We cannot hold ourselves responsible for goods forwarded by Mail. The examination of Packages by POST OFFICE OFFICIALS prevents this. When forwarded by EXPRESS the COMPANY is responsible.

Should we be out of goods, and delay is apprehended, notice will be given by Postal Card.

Exchanges.

If, upon receipt of your order, you find it has not been filled satisfactorily, please advise us at once, stating the facts.

Hair Nets, goods bought outside, goods damaged in the Mails, gloves and Hosiery tried on, cannot be changed. Where the fault is ours, we will cheerfully exchange it at our expense; where the customer's fault, at their expense—always providing the goods are in saleable condition, and within a reasonable time; or we will refund the money.

IN RETURNING THE GOODS PUT YOUR NAME AND ADDRESS ON THE OUTSIDE WRAPPER. This is allowed, and enables us to identify the package at once.

Send in your letter sufficient money to pay postage on Exchanged Goods back to you—if the mistake is ours the money will be returned.

Samples.

We do not GUARANTEE to have the goods beyond the day upon which the samples are cut. Our enormous trade, both in the store and by Mail, makes this impossible.

We send samples of every thing which can be cut, and of which a small piece will give an idea—except as below.

We cannot intelligently comply with the requests for samples where width, color, shade and range in price are not given. By stating just what is wanted, time and correspondence may be saved.

If, upon receipt of samples, they do not prove satisfactory, we would thank you to return them and repeat request specifying in what particular we have failed to interpret your wishes.

To avoid disappointment as far as possible, orders should follow by RETURN MAIL upon receipt of samples.

Two selections should be made, retaining a part of each, in case either should be sold.

In all cases every effort will be made to execute orders; if not successful, samples of the nearest will be submitted; if not satisfactory (other goods not being desired), money will be refunded.

Orders Promptly Answered.

All orders received by us are filled immediately on their receipt. There is no deviation from this rule. When goods are sold out we promptly advise you. Should we deem it wise to make a substitute it will be subject to exchange or return.

Lost or Delayed Orders.

If you do not hear from us in a reasonable time after sending your order, it is evidence that the order has not been received by us, or that our reply has miscarried, and you should send a letter of inquiry at once.

Why some Letters fail to reach us.

Some people are very much surprised if a letter of theirs fails to reach us, but the truth is, a few letters are constantly lost or stolen from the mails, and those who send money loose in ordinary letters are sure to be the victims. The remedy is to make all remittances by post-office order, bank draft or registered letter, and never to send money loose in ordinary letters.

Notice.—We will not be responsible for money sent loose in ordinary letters. It is not safe. Persons who send it in this way do so at their risk.

OUR GUARANTEE.

If goods do not give entire satisfaction, or are not as ordered, we cheerfully exchange them or refund the money.

TERMS:—INVARIABLY CASH WITH THE ORDER.

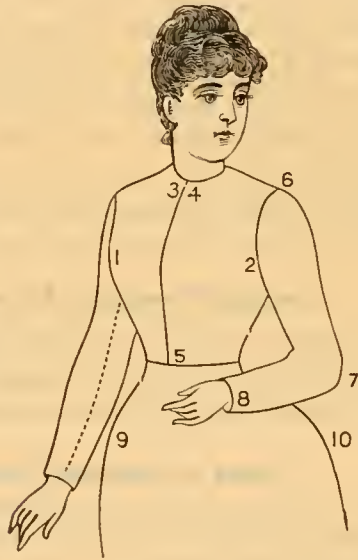
How to send Money.—In remitting money, AN EXPRESS OR POST OFFICE ORDER drawn to the Order of FOX & KELLY, NEW YORK CITY, is the safest way.

If the original order is lost a duplicate will be issued on application (giving No. of Order), which insures the owner from loss. Be sure to retain No. of Order. Money may be forwarded by REGISTERED Letter when Post-office Order cannot be had; or by DRAFT on New York, drawn to the order of FOX & KELLY.

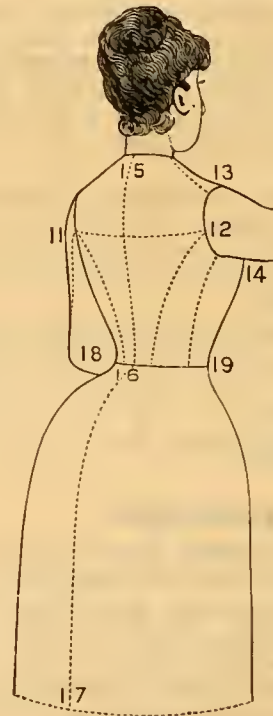
Ladies' Wraps, Newmarkets, Jackets, Etc.

Our assortment for the Fall and Winter Season in this department is replete with Garments of the newest styles and best workmanship, and our prices are the lowest in the city. We guarantee all our garments to be perfect fitting and correct styles.

Particular attention will be given to orders by mail, and customers can rely on receiving just what they order. We earnestly request that the exact measurements be sent.



FRONT.

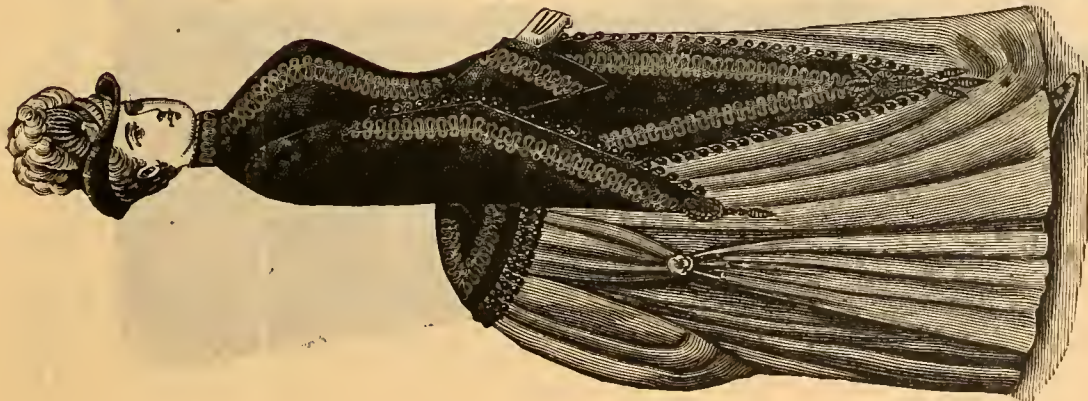


BACK.

DIRECTIONS FOR MEASUREMENT.

FRONT.	BACK.
1 to 1. Around bust and back	11 to 12. Across the back
1 to 2. Across bust from seam to seam	13 to 14. Around the arm and shoulder
3 to 4. Around the neck	15 to 16. Length of waist
4 to 5. Neck to waist	16 to 17. Length of garment from waist to bottom
6 to 7. Shoulder to elbow	18 to 19. Around the waist
7 to 8. Elbow to end of cuff
9 to 10. Around the hips

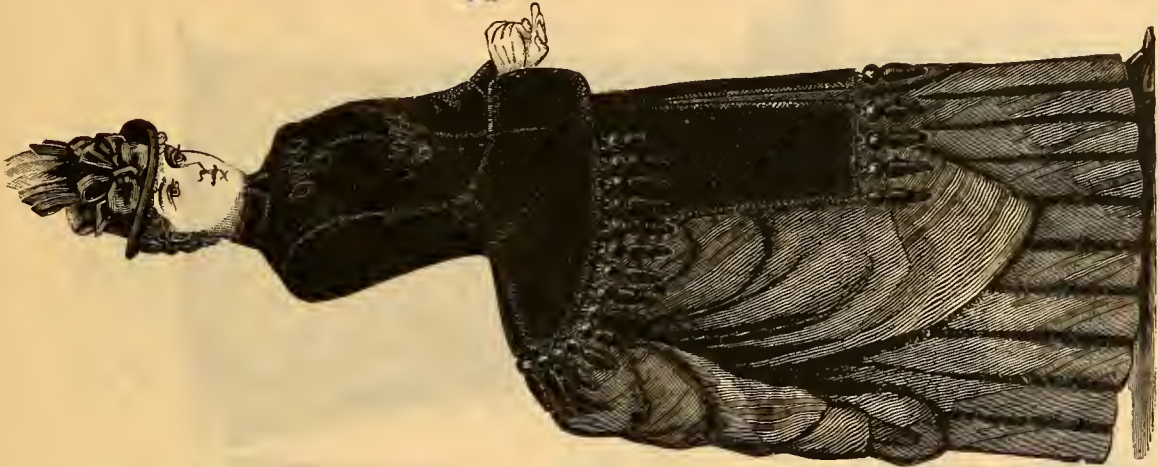
On all orders of \$10 and over we will allow 5 per cent. discount in lieu of express charges.



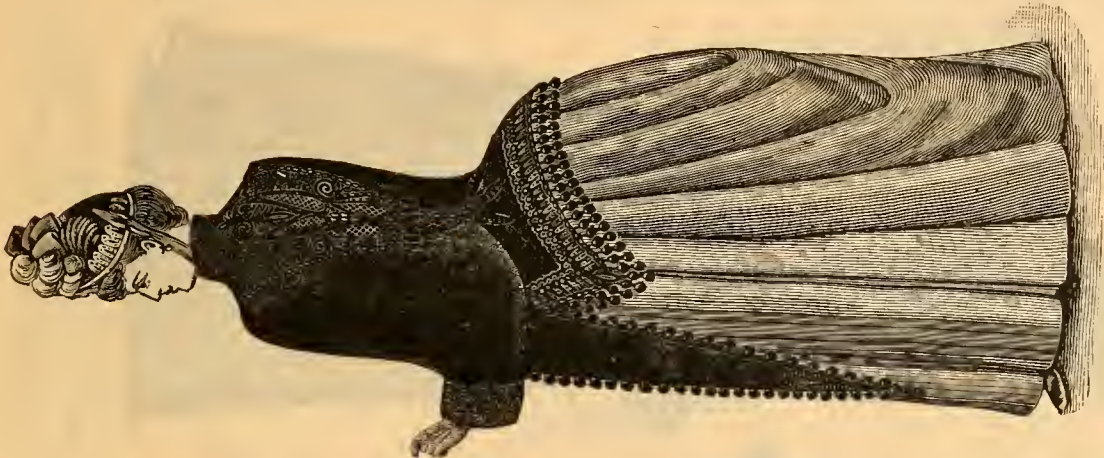
No. 101. Modjeska of Seal Plush, angel sleeves, trimmed with fine silk passementerie, \$24.50.



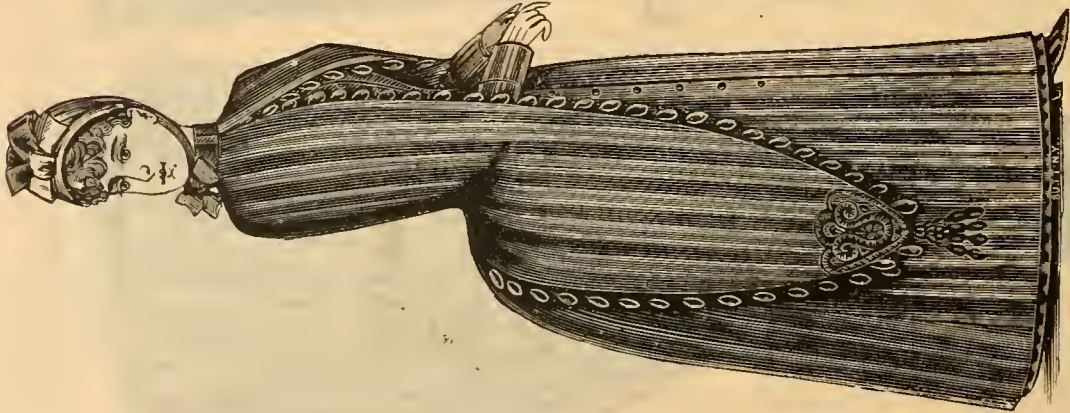
No. 102. Seal Plush Wrap, quilted satin lining, trimmed with seal fringe and ornaments, \$29.75.



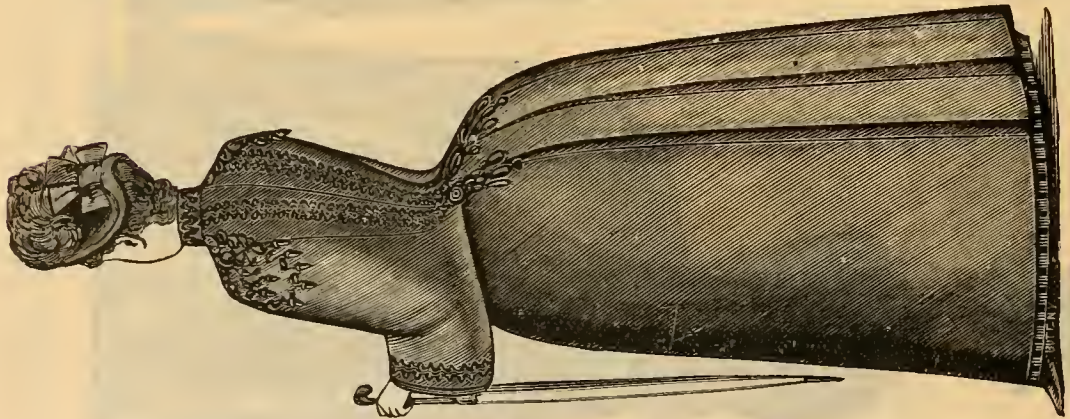
No. 103. Seal Plush Wrap, quilted satin lining, trimmed with seal plush fringe and ornaments, \$14.50.



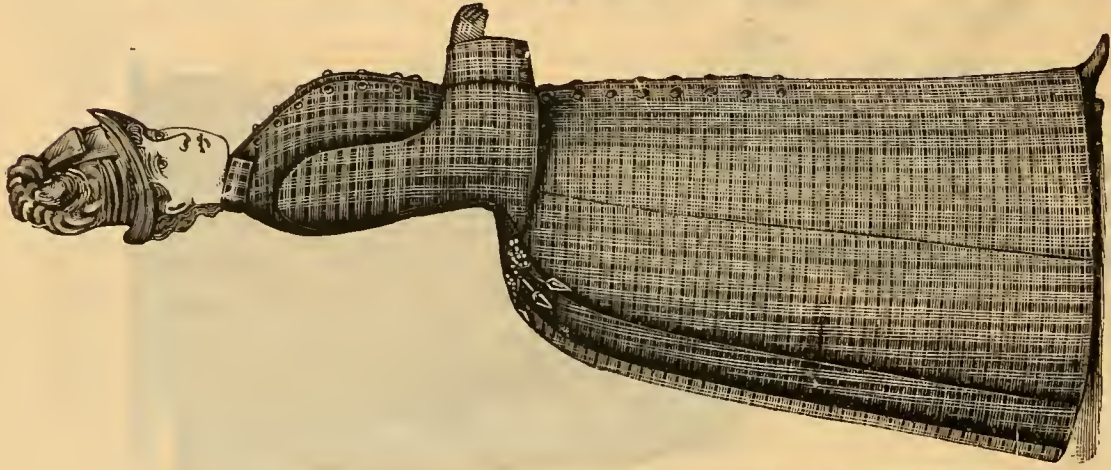
No. 104. Fine Silk Seal Plush Wrap, quilted satin lining, trimmed with silk passementerie, front trimmed to match back, \$37.50.



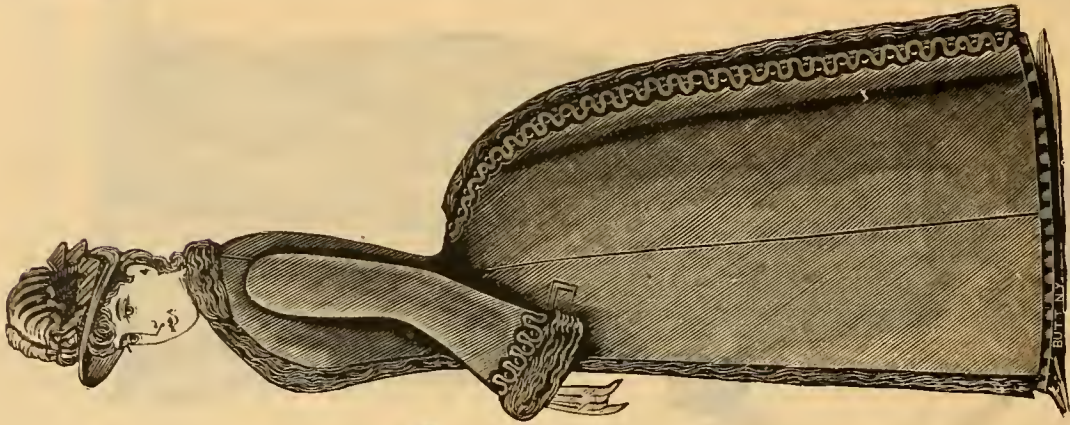
No. 105, Handsome Garment of very fine striped cloth, trimmed with silk passementerie, \$18.75.



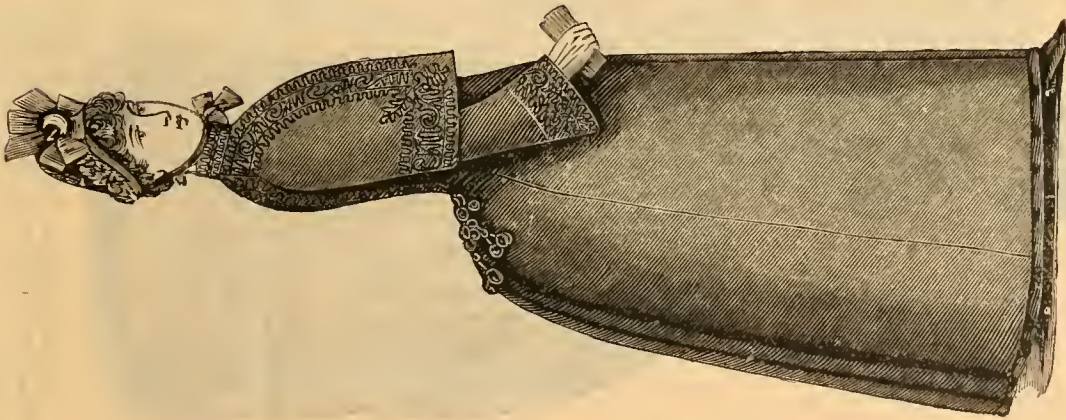
No. 106, Raglan in black and all colors of fancy Diagonal or Glace Cloth, passementerie trimming, \$18.75.



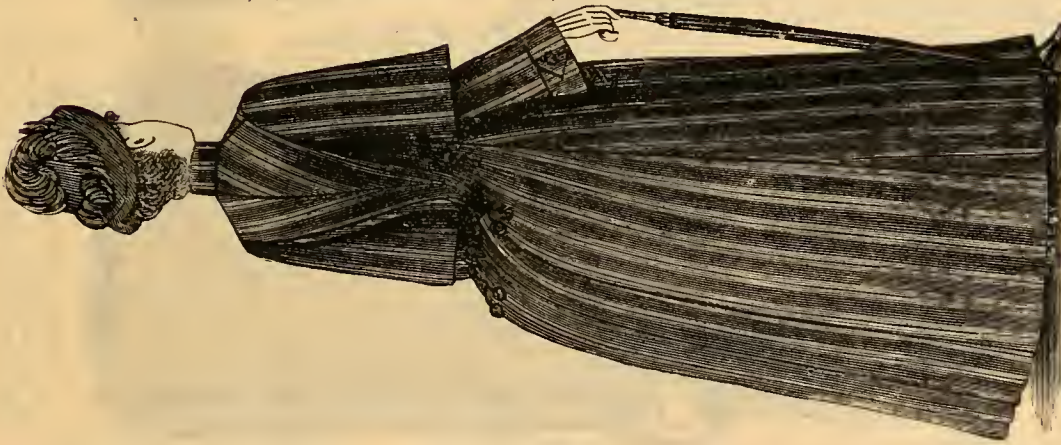
No. 107, Raglan of plaid material, \$11.75.
No. 148, The same in Black or Blue Beaver or Glace Cloth, \$12.75



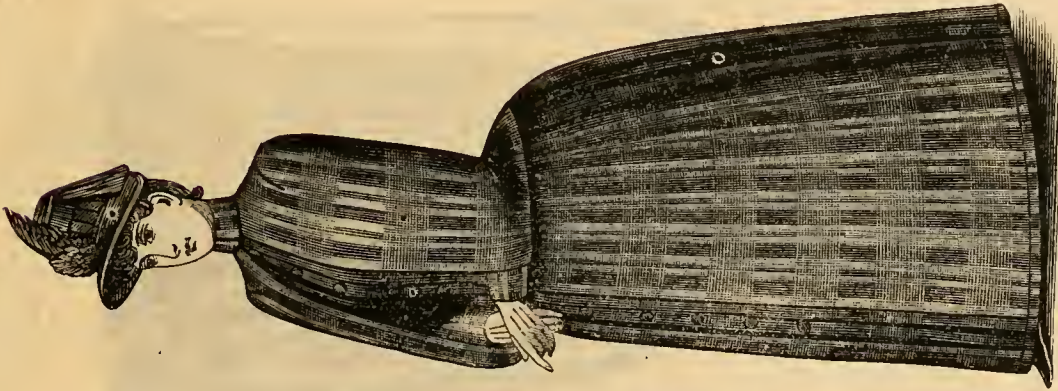
No. 108, Tight-Fitting Newmarket of fine quality imported cloth, in black and all the fashionable colors, trimmed with fur and passementerie, \$18.50.



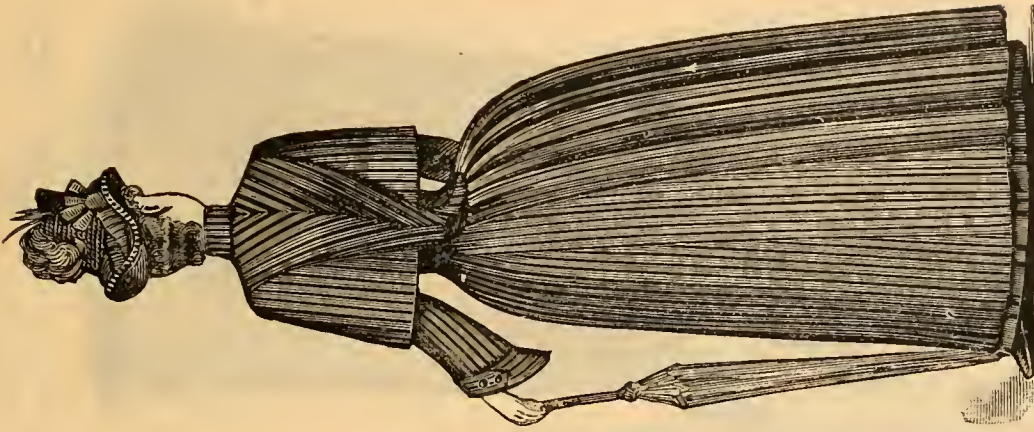
No. 109, Close Fitting Newmarket of black and blue beaver cloth, with underarm cape, elaborately embroidered, bell sleeves, \$15.50.



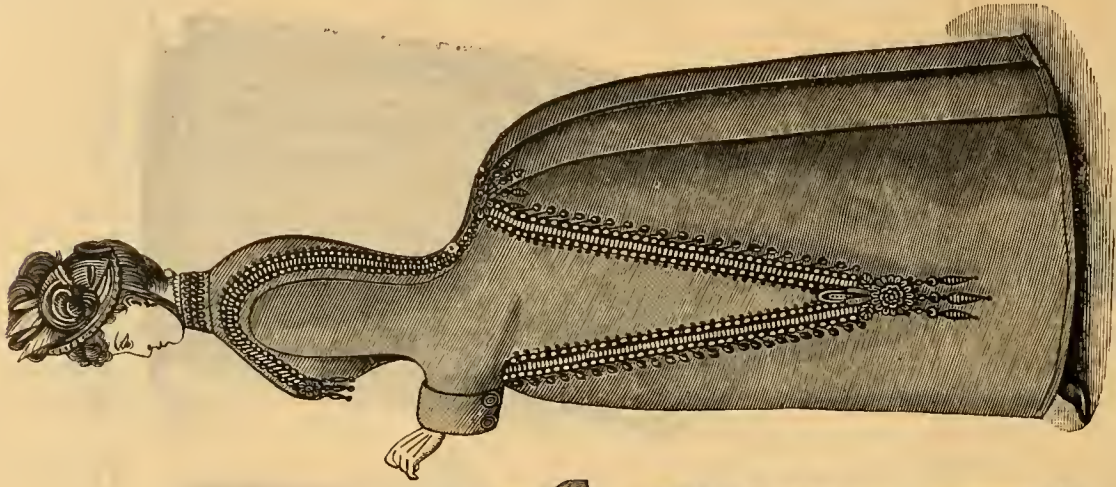
No. 110, Close Fitting Newmarket of striped cloth, with half under-arm cape, plaited back with silk ornament, bell sleeves, \$9.95.



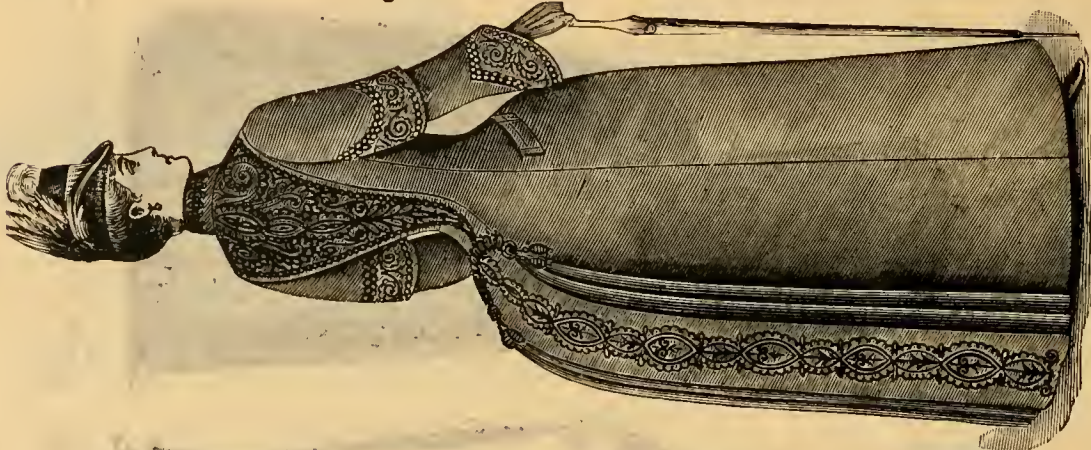
No. 111, Stylish Newmarket of plaid material, loose plaited front, sling sleeves, \$14.75.



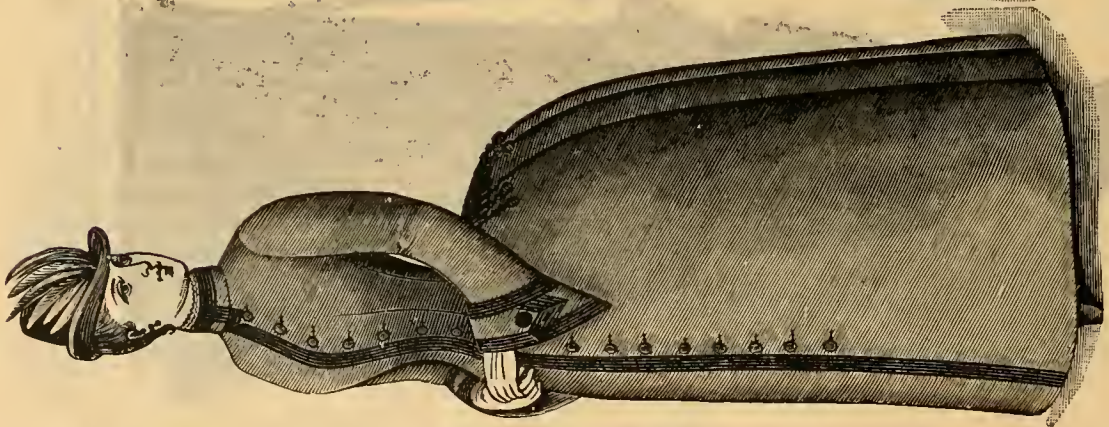
No. 112, Close Fitting Newmarket of striped cloth, half cape, pointed back and bell sleeves, \$9.75.



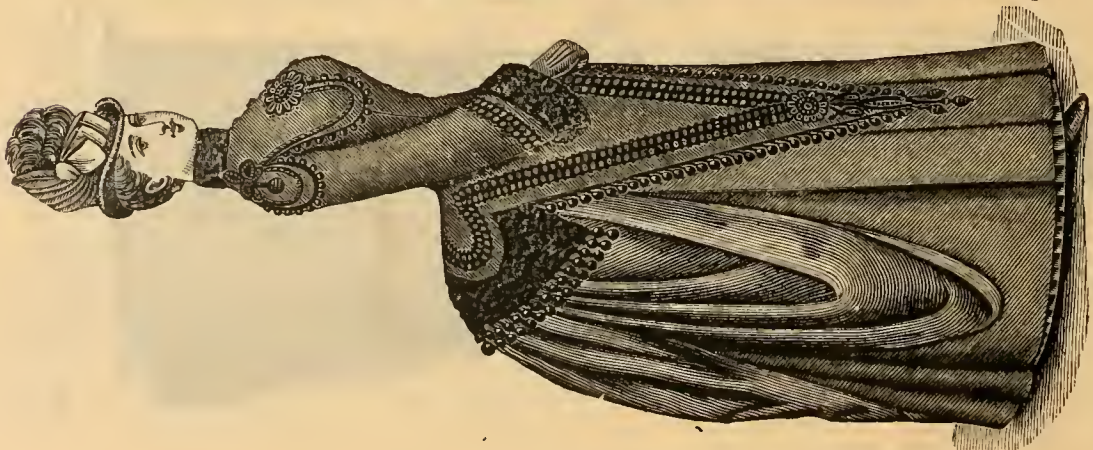
No. 116. Very attractive garment of plain, colored and black glace or beaver cloth, trimmed with black silk passementerie, \$24.50



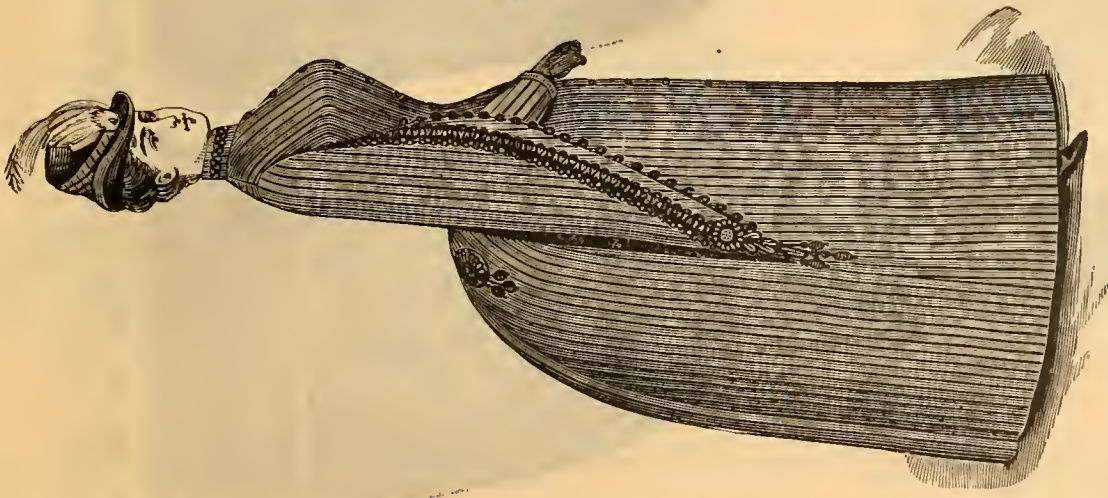
No. 115. Tight Fitting Newmarket, with bell sleeves and half under arm cape, in all the latest colors and black, beaver or glace cloth, front of cape embroidered to correspond with back, \$23.50,



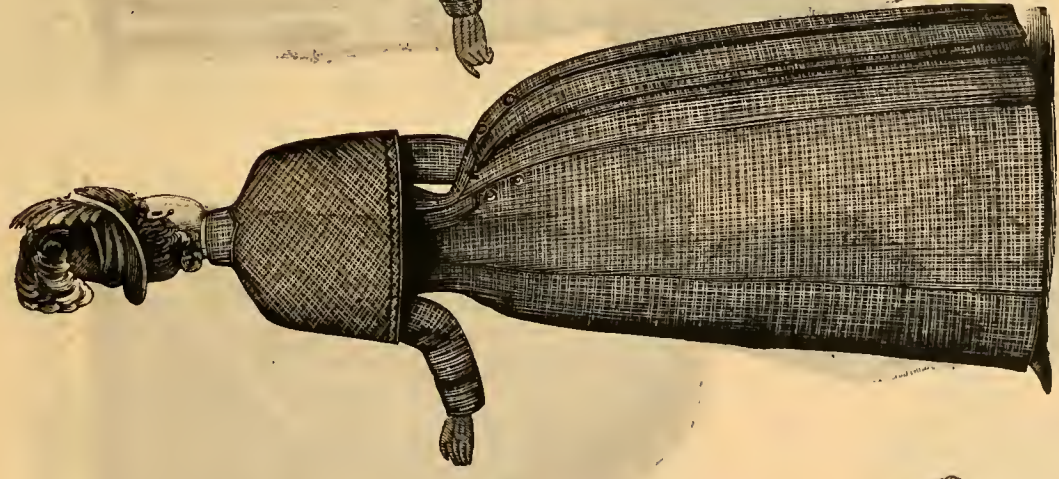
No. 114. Tight Fitting Newmarket, with bell sleeves, of black and colored beaver cloth, bound with wide braid, back pointed and finished with ornaments, \$42.25.



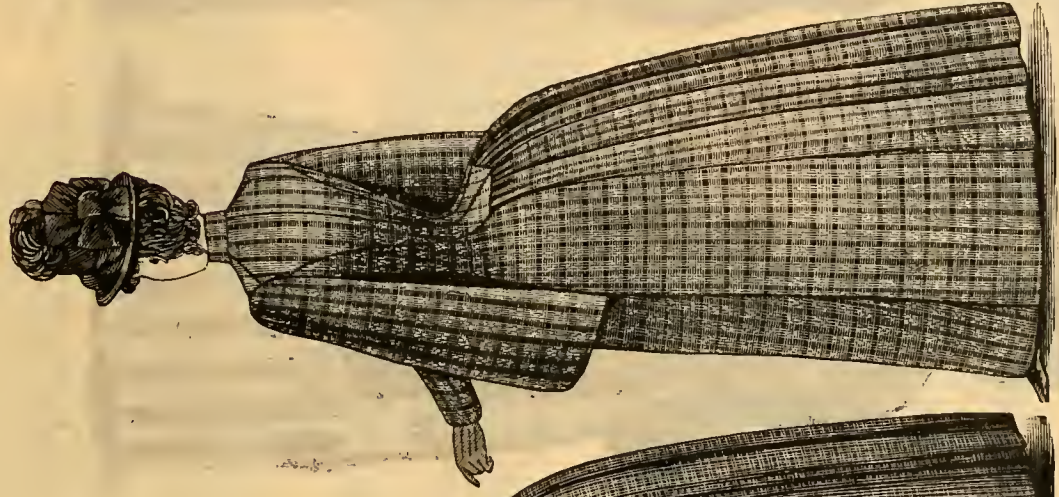
No. 113. Modjeska, in black and all the latest colors of glace cloth, trimmed with black Astrachan and silk passementerie, \$48.50.



No. 117. Tight Fitting Newmarket of striped cloth, angel sleeves, trimmed with passementerie, \$17.50.



No. 118. Close Fitting Newmarket, with full cape of plaid material, in all the desirable shades and patterns, tailor made and bound with braid, \$7.50; finer quality, \$9.50



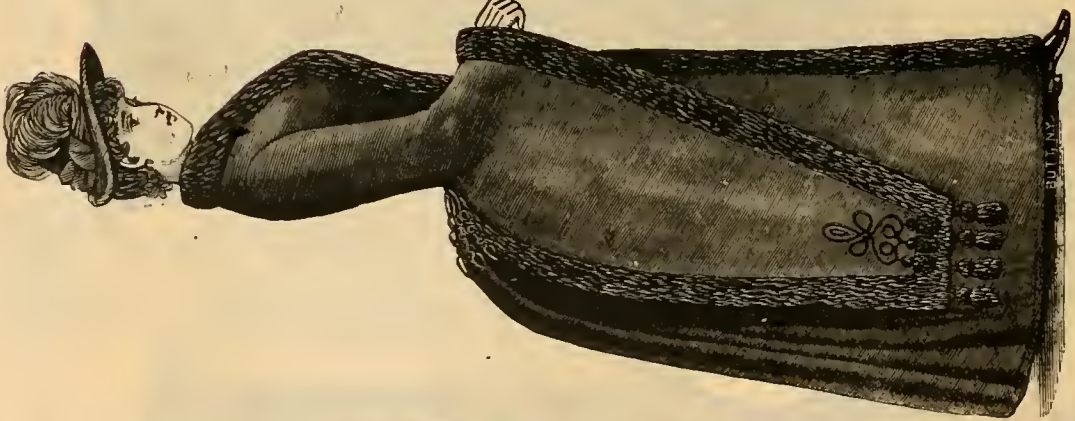
No. 119. Tight Fitting Newmarket of plaid material, angel sleeves, pointed back, \$9.50.



No. 120. Close Fitting Newmarket, with angel sleeves, in black and all colors of beaver cloth, handsomely embroidered back, to correspond with front, \$24.75.



No. 121. Seal Plush Saeque, quilted satin lining, seal ornaments, 38, 40, 42, 44 inches long, \$15.95 up.



No. 122. Dolman of black Glace cloth, trimmed with fur, full length, \$13.95.



No. 123. Modjeska of astrachan, quilted satin lining, \$9.95.



No. 124. Newmarket of Seal Plush, with bell sleeves, quilted satin lining and seal ornaments, box plaited back, \$31.50 up, according to quality of plush.

Please Note.—Seal Plush Saeques are made in 38, 40, 42 and 44 inches long, viz., from back of neck to bottom of Saeque. In ordering Plush Saeques or Newmarkets, give full back measurement.



No. 129. Seal Plush Wrap, trimmed with spike fringe, \$13.95.



No. 130. Astrachan Wrap, trimmed with fur and lined with quilted satin, \$12.75.



No. 131. Seal Plush Modjeska, satin lining, trimmed with silk passementerie, \$24.50.



No. 132. Tight Fitting Jacket in all shades of beaver cloth with raised braiding, \$7.25.



No. 133. Close Fitting Jacket of black and blue beaver cloth, bell sleeves, hand-somely braided, \$6.50.



No. 134. Close Fitting Jacket of black and colored beaver cloth, revere front bound with silk braid, \$7.95.



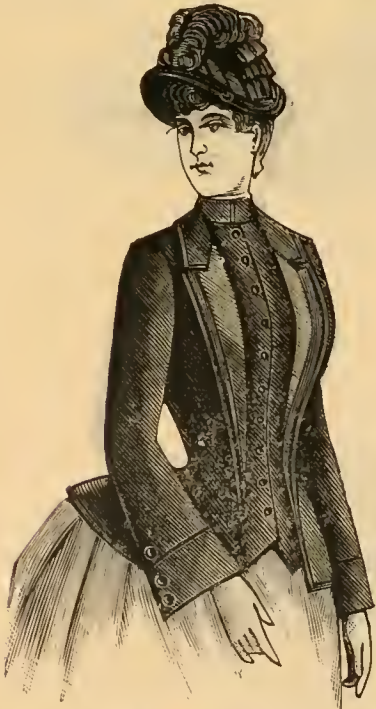
No. 135. Cloth Wrap, trimmed with fur and silk passementerie, 9.95.



No. 136. Tight Fitting Jacket of Seal Plush, satin lining, trimmed with silk passementerie, bell sleeves, \$21.75; same without trimming, \$17.50.



No. 137. Close Fitting Jacket of Seal Plush, satin lining, trimmed around bottom and on bell sleeves with seal fringe, seal ornament in front, \$19.75; same without trimming, \$15.95.



No. 138. Close Fitting Jacket of extra fine quality imported diagonal, vest front, faced with silk and bound with silk braid, \$10.95



No. 139. Tight Fitting Jacket of black or blue beaver cloth, handsomely braided and bound, \$4.95.



No. 140. Close Fitting Tailor Made Jacket of black and colored beaver, \$4.95

JERSEYS.

We have devoted unusual energy in placing before our customers an immense variety of attractive and pleasing styles. We mean to supply you with the best styles, best qualities, and at our well-known low prices.



No. 154. Fine Cashmere Jersey, plaited front, trimmed with fine soutache braid, belt with handsome metal buckle, \$5.95.



No. 155. All-Wool Cashmere Jersey, buttoned in the back, trimmed with fine Hercules braid, \$2.50; same without braid, \$2.25.



No. 156. Finest Quality Cashmere Jersey, trimmed front and back and on collar and cuffs, around bottom with fine braid, \$4.75.



No. 157. All-Wool Cashmere Jersey, ruffled yoke, plaited front with belt, \$5.95.

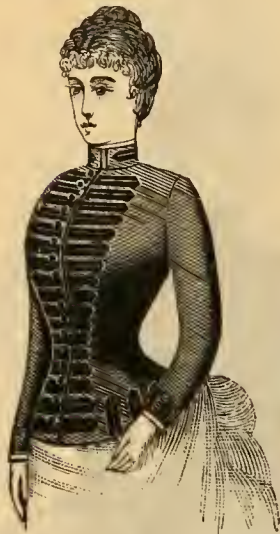


No. 158. Fine Cashmere Beaded Jersey, newest design, extra quality cloth, \$4.95.



No. 159. Cashmere Jersey, trimmed with fine cord vest front, collar and cuffs, \$2.95.

NOVELTY "GLOVE FITTING" JERSEY.
TRADE MARK REGISTERED.



NONE GENUINE WITHOUT CLOTH LABEL ATTACHED.

No. 148. Elegantly Trimmed Jersey of all wool cashmere, silk braid trimming, \$3.69.

Tailor Finished.

NOVELTY

GLOVE FITTING

JERSEYS.

NONE GENUINE WITHOUT OUR TRADE MARK REGISTERED.

CLOTH LABEL.

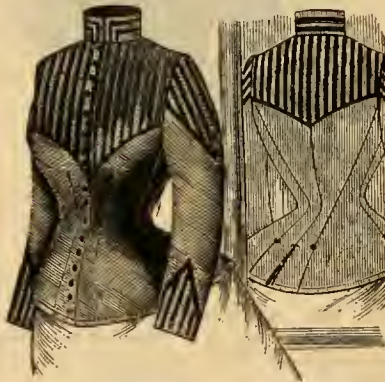
NOVELTY "GLOVE FITTING" JERSEY.
TRADE MARK REGISTERED.



NONE GENUINE WITHOUT CLOTH LABEL ATTACHED.

No. 150. Fine All Wool Cashmere Jersey, military style, trimmed with fine English mohair braid. \$2.50. Same in mohair, \$1.95.

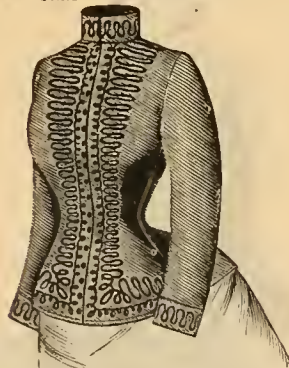
NOVELTY "GLOVE FITTING" JERSEY.
TRADE MARK REGISTERED.



NONE GENUINE WITHOUT CLOTH LABEL ATTACHED.

No. 149. Fine All Wool Cashmere Jersey, handsomely trimmed front and back, \$3.95.

NOVELTY "GLOVE FITTING" JERSEY.
TRADE MARK REGISTERED.



NONE GENUINE WITHOUT CLOTH LABEL ATTACHED.

No. 151. Fine All Wool Cashmere Jersey, elegantly braided down front and on collar and cuffs, \$2.95.

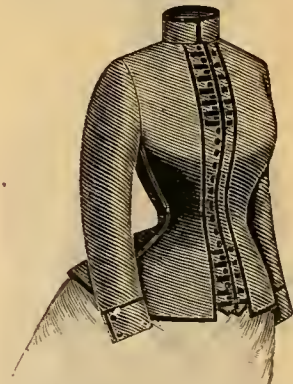
NOVELTY "GLOVE FITTING" JERSEY.
TRADE MARK REGISTERED.



NONE GENUINE WITHOUT CLOTH LABEL ATTACHED.

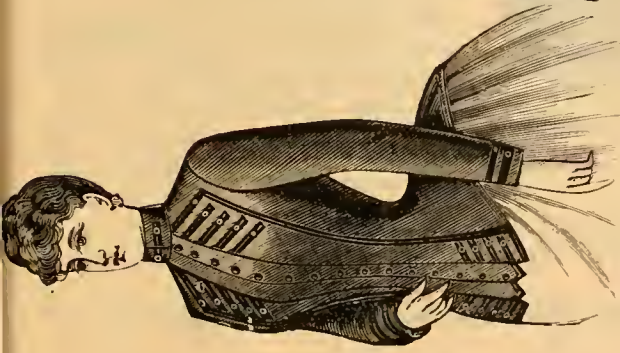
No. 152. Cashmere Jersey, trimmed with three rows of braid all around and down front, \$2.15.

NOVELTY "GLOVE FITTING" JERSEY.
TRADE MARK REGISTERED.

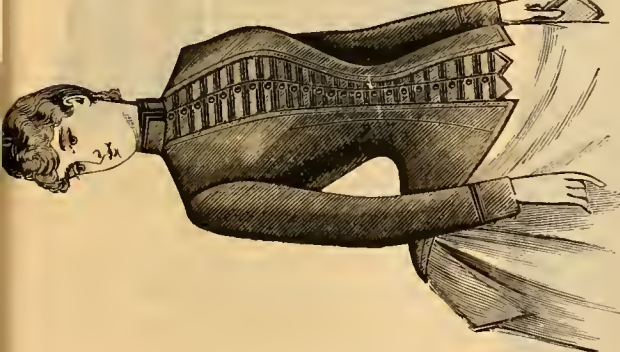


NONE GENUINE WITHOUT CLOTH LABEL ATTACHED.

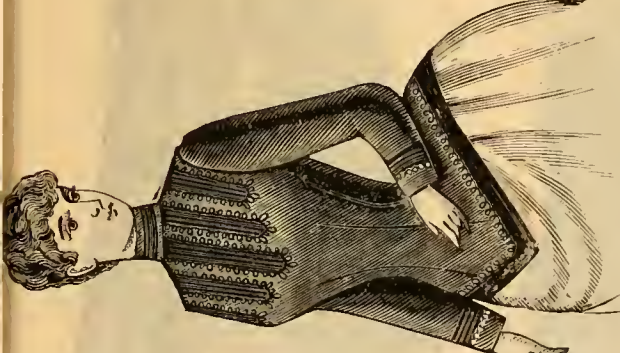
No. 153. All Wool Cashmere Jersey, trimmed down front and on bottom with fine silk braid, \$3.25.



No. 142. Cashmere Jersey, revere front, trimmed with fine silk braid, \$2.95.



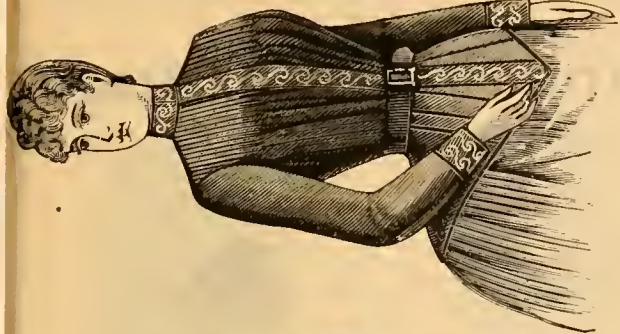
No. 144. Very Fine Cashmere Jersey, trimmed with fine silk braid, \$2.95.



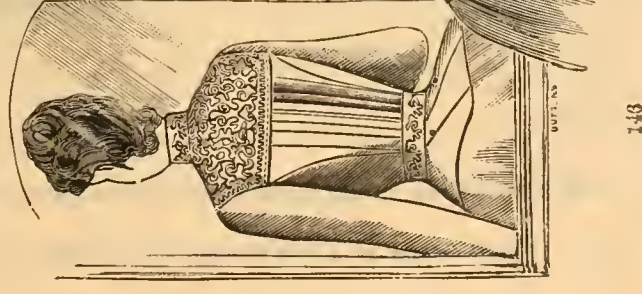
No. 143. All Wool Cashmere Jersey, trimmed with wide braid, forming yoke and around bottom, buttoned in back, \$3.75.



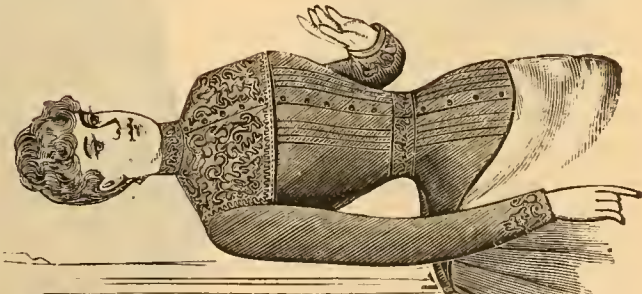
No. 145. Cashmere Jersey, handsomely embroidered vest, finished on collar, cuffs, and vest with loops of fine silk braid, \$3.50



No. 141. Fine Cashmere Jersey, tucked yoke, trimmed with fine soutache braid down front and on collar and cuffs, \$5.95.

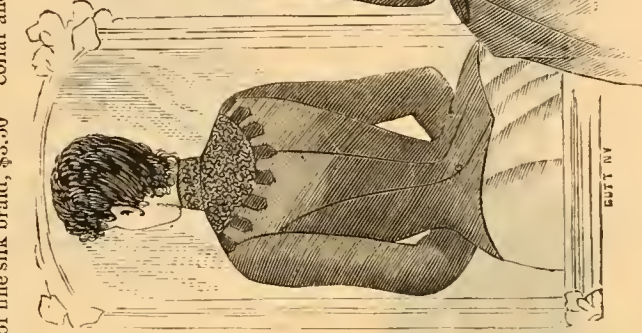


DUPT. N.Y.



No. 146. The novelty of the season. Fine Cashmere Jersey, handsomely embroidered yoke, plaited front and back, with belt, \$4.25.

No. 147. Very fine all wool Jersey, trimmed with very fine soutache braid and nicely embroidered, \$3.95.



DUPT. N.Y.



147

Ladies' Wrappers and Tea Gowns.



No. 361.

No. 361. French Striped Flannel, reverse down front of silk plush, bell sleeves, plush collar and cuffs, all colors, \$10.95.

No. 351. Tycoon Rep Wrapper, tight fitting princess back, assorted patterns, \$2.49.

No. 352. Stylish Wrapper, made of tycoon rep, Mother Hubbard front, full V back, \$3.25.

No. 353. English Cashmere Wrapper, tight fitting princess back, navy, wine and black, \$2.49.

No. 354. English Cashmere Wrapper, tight fitting princess back, velvet collar and cuffs, \$2.75.

No. 355. Fine Cashmere Wrapper, Mother Hubbard front, V back, nicely finished, \$3.75.

No. 356. Fine Cashmere Wrapper, Mother Hubbard front, Wattean back, bell sleeves, \$5.25.



No. 362.

No. 362. Fine Cashmere Wrapper, handsomely braided, full V back, bell sleeves, all colors, \$10.25.



No. 360.

No. 360. All-Wool Striped Flannel Tea Gown, cashmere fedora, full V back, bell sleeves, \$8.95.

No. 357. All-Wool Check Flannel Wrapper, Mother Hubbard front, princess back, in black and white, black and red, black and blue, \$5.25.

No. 358. Plain All-Wool Flannel Wrapper, Mother Hubbard front, full V back, coat sleeves, all colors, \$5.95.

No. 359. All-Wool French Plaid Tea Gown, cashmere fedora front with a wattle back, bell sleeves, handsomely finished, \$8.25.

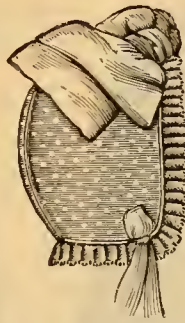
When ordering Wrappers, give bust measure and full length of front from neck to hem.

On all orders of \$10 and over we will allow 5 per cent. discount in lieu of express charges.

Children's Caps, Etc.



No. 85. Fine Normandie Plush Cap, full satin ruche, all sizes and colors, \$1.35.



No. 86. This Cap is made of fine quality satin, with pressed dots, large surah bow, in cream only, \$1.10. Same in Plush.



No. 87. Three piece Cap made of plush, latest style, satin trimmings, full ruche on top, sizes, 16, 17, 18, \$1.35.



No. 88. Latest French cut, made of moleskin plush, full Valenciennes facing, in all colors, \$1.35.



No. 89. Fine Embroidered Cashmere Cap, large double bow, colors, cream, tan, cardinal, sizes, 16, 17, 18, 69c.



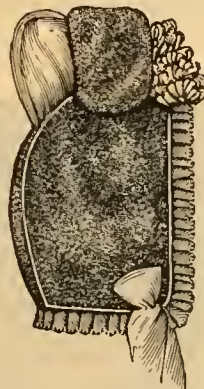
No. 90. Tam O'Shanter Cap, made of silk embroidered cashmere, with bow to match, colors, cream, tan and cardinal, all sizes, 75c.



No. 91. Infant's Fine Cashmere Cap, embroidered, with silk ribbon bow and strings, 65c.



No. 93. Infant's Ribbed Shirt, 4 sizes, 1 2, 3, 4, price, 59c, 69c, 79c, 95c.



No. 92. This is a plush cap with a surah silk puff, laps of plush and trimmed with cream silk ribbon with strings to match, sizes, 16, 17, 18, \$2.39.



No. 94. Infant's Ribbed Shirt, open front, button from neck, 4 sizes, 1, 2, 3, 4, price, 65c, 75c, 89c, 98c.

No. 95. Infant's Zephyr Jacket, white with colored borders, price, 29c, 39c, 55c, 65c, \$1.00.

No. 97. Infant's Hand Knit Bootees, 15c, 21c, 29c; cheaper quality, 10c, 12½c.

No. 96. Childs' Drawer Leggings, hand knit, with or without feet, size, 1, 2, 3, in navy, brown, cardinal or white, 85c, 98c, \$1.15; woven, 65c.

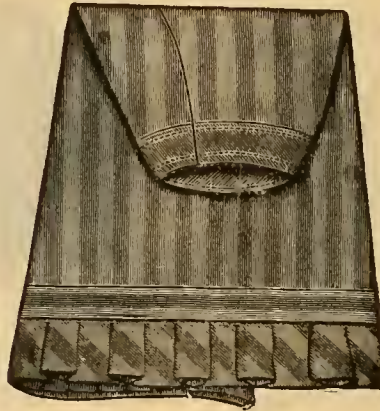
No. 98. Misses' Toboggan Cap, finished at front with worsted balls, different shades, 25c, 45c, 69c.

SPECIAL NOTICE.—On all orders of \$10 and over we will allow 5 per cent. discount in lieu of express charges.

Colored Skirts.



No. 201. Gray Melton, deep side plaited flounce, 3 rows of braid on flounce, 2 on band, \$1.19.



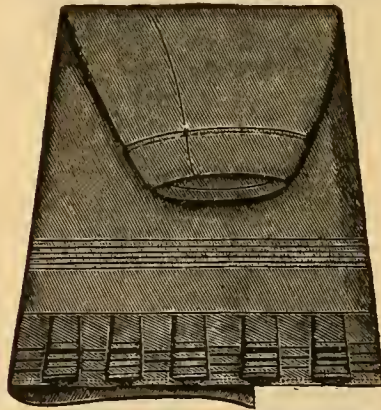
No. 202. Striped all wool Flannel Skirt, box plaited ruffle, red and gray, black and gray, red and black, \$1.59.



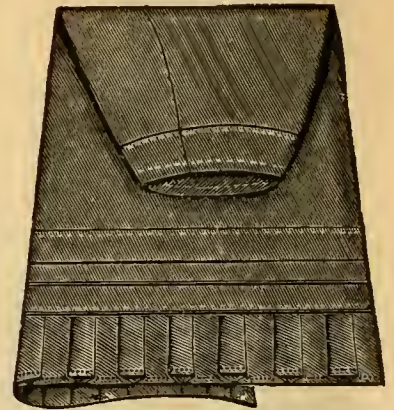
No. 203. Striped All Wool Skirt95c



No. 204. Black Farmer Satin Skirt, fancy satin quilting, 10 inches deep, and satin box plaited ruffle, large size, \$4.25.



No. 205. Gray Cloth, deep box plaited flounce and band, trimmed with 7 rows of colored braid, \$1.25.



No. 206. Gray Melton Cloth Skirt, box plaited ruffle, two bands trimmed with piping, 99c.



No. 207. All Satin Skirt with 12 inch fancy quilting, navy, seal, cardinal, garnet and black, \$5.95.



No. 210. Black Farmer Satin Skirt, Canton Flannel lining, trimmed with quilted satiu, 9 inches deep, \$2.19.



No. 212. Black Farmer Satin Skirt, 30 rows of quilting, canton flannel lining, 99c.
No. 213. Same, in best quality, fast black, farmer satin, \$1.59.
No. 214. Same, with fancy quilting, \$1.95.

No. 208. Same Skirt, box plaited, \$7.25.
No. 209. Black Alpaca Skirt, fancy quilting, \$2.49.

No. 211. Same style, with striped flannel top, \$2.19.

SPECIAL NOTICE.—On all orders of \$10 and over we will allow 5 per cent. discount in lieu of express charges.

Highly Recommended by Fox & Kelly.

MME. WARREN'S DRESS FORM CORSET



LONG WAISTED,
LONG HIGH BUST,
UNBREAKABLE HIP,

THE ONLY CORSET MADE
OVER WHICH A DRESS CAN BE
FITTED TO PERFECTION

FOR SALE EVERYWHERE
LEWIS SCHIELE & CO.
390 BROADWAY, NEW YORK
SOLE OWNERS OF PATENT & M.F.P'S

Highly Recommended by Fox & Kelly.



Made in a large variety of styles to suit all forms, in Satin, Sateen, Coutil, Jean and Alexandra Cloth, in various weights, suitable for wear in all seasons. Prices, from 75c up to \$6.00.

None genuine unless stamped "S.C."
Manufactured and Imported ONLY BY

Lewis Schiele & Co.
390 BROADWAY,
NEW YORK.

FOR SALE EVERYWHERE AND RECOMMENDED BY FOX & KELLY.



ON WHITE SPOOLS!

GEORGE A. CLARK, Sole Agent.

IT IS SUPERIOR TO ALL OTHERS

FOR HAND AND MACHINE USE.

Garments sewed with O. N. T. FAST BLACK

will never show white on the seams after being worn or washed.

RECOMMENDED BY FOX & KELLY.

M. Heminway & Sons' Silk Co.

LEADING MANUFACTURERS OF

SILK THREADS

FOR FORTY YEARS.



HEMINWAY'S SPOOL SILK

AND

BUTTON-HOLE TWIST

Warranted Full Length and Full Size.

WARRANTED BEST IN THE MARKET.

A VERY COMPLETE ASSORTMENT OF
COLORS AND BLACK ALWAYS IN STOCK.

IFOX & KELLY RECOMMEND IT.

THOMSON'S

CELEBRATED

Glove-Fitting Corsets

HAVE NEVER BEEN EQUAL TO PRESENT MAKE.

MORE POPULAR THAN EVER.

A PERFECT FIT GUARANTEED.

THREE LENGTHS:

Short, Medium and Extra Long.

TWELVE GRADES.

Highest Awards Granted.

THE BEST GOODS AND CHEAPEST FOR QUALITY.

For Sale Everywhere.



AND RECOMMENDED BY

FOX & KELLY

NEW YORK.



ORDER EXPRESS GOODS SENT BY THE
American Express Company's
SPECIAL EXPRESS TRAINS,

Leaving New York at 8.30 and 9.00 P.M. Boston at 3.00 and 6.00 P.M.

These Special Express Trains carry American Express Co.'s business exclusively, and no Passengers, running 40 miles per hour. Better time made than by Passenger Trains. Rates always as low as by other Expresses.

AMERICAN EXPRESS CO.
NEW MONEY ORDERS.

Cheap, Safe and Convenient, issued for any amount from 1c to \$50.00 and upwards.

Payable either to ORDER or TO BEARER at 10,000 places in the Eastern, Middle, Western and Southwestern States, the Territories, Pacific Coast, and the Canadas.

Receipts given, and if Orders are lost, Money refunded.

Orders are also Negotiable at Banks.

ORDERS SOLD at ALL OFFICES of the COMPANY in the UNITED STATES.

RATES:

\$5.....	5c	\$30.....	.12c
10.....	8c	40.....	.15c
20.....	10c	50.....	.20c

OVER \$50, PROPORTIONATE RATES

AMERICAN EXPRESS CO.
TRANSFERS MONEY BY TELEGRAPH

Between all its Important City and Village Agencies.

LOW RATES AND PROMPT SERVICE.

RATES.—In addition to the cost of Telegraph service, for sums of \$100 or less, one per cent.

Over \$100 to \$200.....	\$1 25	Over \$300 to 400.....	1 75
" 200 to 300.....	1 50	" 400 to 500.....	2 00

Rates for larger amounts, apply to Agents.

American Express Company fills Orders for Goods or Household Supplies.

To be returned by Express.

Prompt attention and no extra charge for the service.

Purchases not exceeding \$5 each will be advanced by the Company, without charge, provided deposit is made with the Agent.

Orders can be given to Agents or to Messengers on trains. Orders by Telegraph, through the company's Agent, sender prepaying same, will receive prompt attention. Blanks for orders, free, on application to Agents.

PARCEL RATES from New York.—The Lowest and Highest Rates to Offices of American, Wells, Fargo & Co., Southern, Texas, Pacific and D. & R. G. Expresses.

	1 lb. or less. 5:	Over 1 to 2 lbs.	Over 2 to 3 lbs.	Over 3 to 4 lbs.	Over 4 to 5 lbs.	Over 5 to 7 lbs.
NEW YORK.....	25c	25c	25 to 35c	25 to 40c	25 to 45c	25 to 50c
PENNSYLVANIA.....	25c	25 to 30c	25 to 35c	25 to 40c	25 to 50c	25 to 55c
OHIO.....	25c	25 to 30c	35 to 40c	35 to 50c	40 to 55c	45 to 60c
INDIANA.....	25c	30c	35 to 45c	40 to 60c	50 to 70c	55 to 80c
ILLINOIS AND KENTUCKY.....	25c	30c	40 to 45c	45 to 60c	50 to 70c	55 to 80c
MICHIGAN.....	25c	30c	35 to 45c	40 to 55c	50 to 65c	55 to 75c
WISCONSIN.....	25c	30c	40 to 45c	50 to 60c	55 to 70c	60 to 95c
IOWA AND TENNESSEE.....	25c	30c	45c	55 to 60c	65 to 70c	75 to 95c
MINNESOTA, KANSAS AND NEBRASKA.....	25c	30c	45c	60c	70 to 75c	80 to \$1 00
INDIAN TERRITORY.....	25c	30c	45c	60c	70c	80 to 90c
MISSOURI.....	25c	30c	40 to 45c	50 to 60c	55 to 70c	60 to 90c
DAKOTA, TEXAS, MISSISSIPPI, ALABAMA AND LOUISIANA.....	25c	30c	45c	60c	70 to 75c	80 to \$1 00
MONTANA, COLORADO, UTAH AND NEW MEXICO.....	25 to 35c	30 to 40c	45 to 50c	60 to 65c	75 to 85c	\$1 00 to 1 15
WYOMING.....	25c	30c	45c	60c	75c	1 00
IDAHO.....	25 to 35c	30 to 45c	45 to 55c	60 to 75c	75 to 90c	1 00 to 1 25
WASHINGTON TERRITORY.....	25 to 40c	40 to 50c	50 to 60c	65 to 80c	85 to 1 00	1 25 to 1 50
CALIFORNIA AND OREGON.....	35 to 40c	40 to 50c	50 to 70c	65 to 95c	85 to 1 15	1 15 to 1 60
ARKANSAS.....	25c	30c	45c	60c	70c	80 to 95c
ARIZONA.....	25 to 40c	30 to 50c	45 to 60c	60 to 80c	75 to \$1 00	\$1 00 to \$1 50

AMERICAN EXPRESS CO. MONEY ORDERS are now issued payable in all the principal cities of GREAT BRITAIN, IRELAND, FRANCE, GERMANY, HOLLAND, BELGIUM, ITALY, NORWAY, SWEDEN, and DENMARK, at the following rates: \$10 or less, 10c; \$20, 18c; \$30, 25c; \$40, 35c; \$50, 45c; over \$50, proportionately.