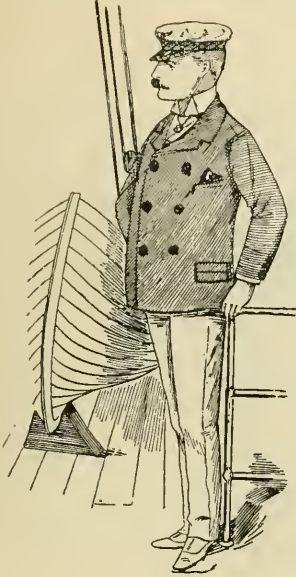


◁ | No. 25. | ▷



ILLUSTRATED PRICE LIST

OF

YACHT UNIFORMS

AND

FURNISHINGS

FOR

Owners, Members, Officers and Crews

MANUFACTURED BY

W. A. RAYMOLD,

99 FOURTH AVENUE,

BETWEEN
11TH AND 12TH STREETS,

NEW YORK, N. Y.

FOURTH AVENUE CARS PASS THE DOOR.

ESTIMATES GIVEN.

△△△

SAMPLES SUBMITTED.

GOOD GOODS AT REASONABLE PRICES.

NO COMMON GOODS SOLD.

Every article we sell, we guarantee to be as represented.

Catalogues of Military and Society Goods Furnished upon Application.



DEAR SIR: We beg to hand you our Price List of Clothing and Furnishings for owners, officers and crews of yachts, and respectfully solicit the favor of your commands.

Any orders you may intrust to us will receive prompt attention, and our best endeavors will be used to give such satisfaction as to lead to a continuance of your favors, and also your recommendation.

Samples of Goods herein mentioned, all of which are of best grade (no common goods sold), will be forwarded upon application for comparison, and we shall be very much pleased to have you call at any time to inspect our stock.

Arrangements made for taking measurements of officers and crews on board their yachts when desired.

Estimates promptly and cheerfully furnished.

We are Manufacturers of everything necessary to completely uniform and equip yacht owners, their officers of the deck, engine room and steward's departments, and crews, and our goods are the acknowledged standard of style and quality.

We make no charge for measuring crews, and wish to impress you with the fact that all officers' uniforms are made to order only, assuring perfect fit.

Call and see our goods.


W. A. RAYMOLD,

99 Fourth Avenue,

New York.

THE HENRY FRANCIS du PONT
WINTERTHUR MUSEUM
LIBRARIES

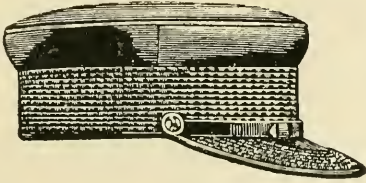




Digitized by the Internet Archive
in 2010 with funding from
Lyrasis Members and Sloan Foundation

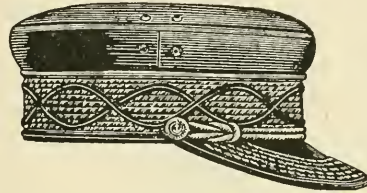
<http://www.archive.org/details/illustratedprice00wara>

CAPS FOR OWNERS.



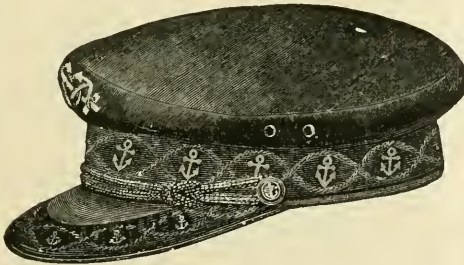
100

100. OWNER'S CAP, of extra fine quality of dark blue broadcloth, satin lined, with mohair band, and drooping cloth-covered braided visor, and with leather inside band. Our finest cap. Each, \$3.50



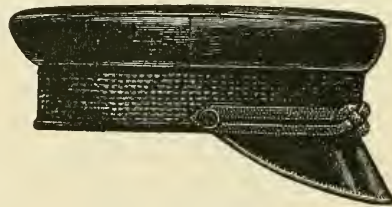
102

102. OWNER'S CAP, made of fine dark blue cloth, with leather inside band; cloth covered and braided visor; diamond pattern of braid on band, with fancy soutache braid thereon. Each, \$3.00



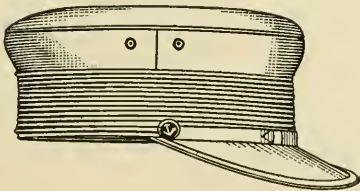
103

103. CAP, with best gold embroidered anchors, black silk cap cord, for the New York and American Yacht Clubs (which will be kept in stock), each \$5.00



104

104. NEW ROCHELLE CAP, of very best dark blue cloth, fast color, with drooping visor and black mohair cord in front; fine grade of cap, each \$2.50



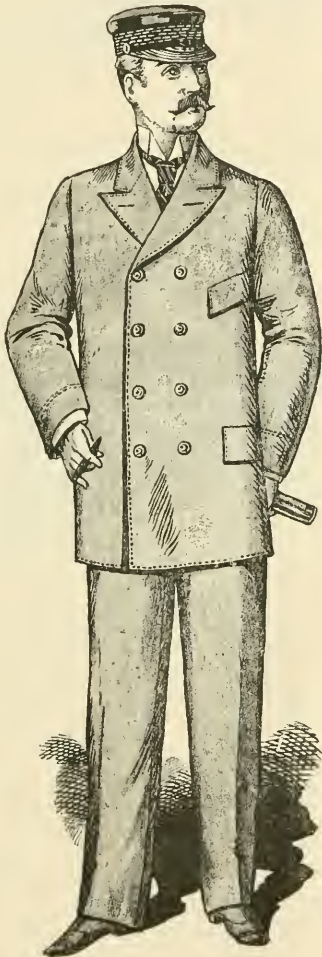
105, 106

105. FINE WHITE SERGE CAP, for owner; white mohair band; serge covered drooping visor; white silk stitching. A very fine article. Each, \$3.50

106. WHITE DUCK OWNER'S CAP, with mohair band and drooping leather visor; ventilated sides, leather front straps..... Each, \$2.50

Owners' Caps for any of the Yacht Clubs—regulation in style and with proper front device—furnished at correct prices.

BLUE UNIFORMS FOR OWNERS AND MEMBERS.



The correct regulation uniform for all Yacht Clubs is made of dark blue cloth or serge, consisting of a Double-Breasted Sack Coat, with black rubber buttons, and with braiding on sleeves to indicate rank, and with Vest and Trousers to match, all made in very best manner by experienced custom tailors, perfect fit guaranteed, at following prices:

107. Cloth of pure indigo dye; smooth faced, well and carefully made; serge lining.....\$35.00

107½. Suit as No. 107, but of blue serge.....\$35.00

108. Cloth of extra quality of dark blue, fast color navy cloth; carefully manufactured; special attention to details.....\$40.00

108½. Suit as No. 108, but of fine blue serge.....\$40.00

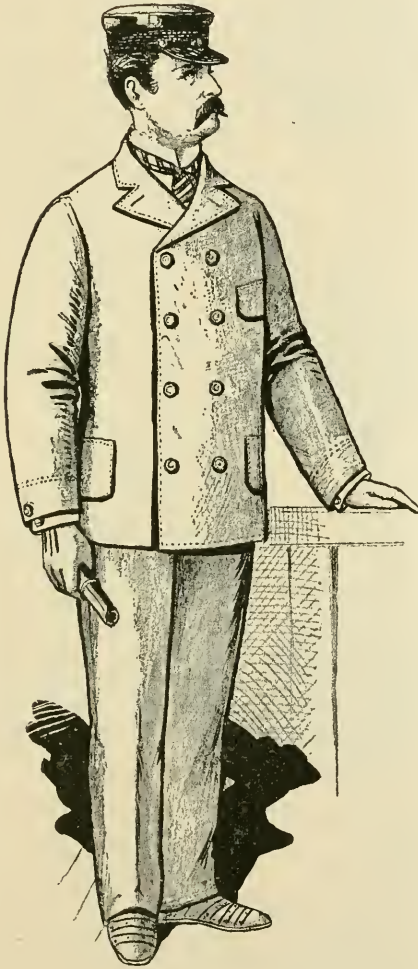
109. Regulation dark blue cloth, superfine quality; silk lined, hand-made; superior finish. An extra fine suit.....\$50.00

109½. Suit as No. 109, but of extra fine blue serge.....\$50.00

110. Cloth, our best grade; guaranteed to give perfect satisfaction; finely trimmed, elegantly made; fine silk lining; superior finish.....\$60.00

110½. Suit as No. 110, but of superfine grade of blue serge....\$60.00

WHITE UNIFORMS FOR OWNERS AND MEMBERS.



111. White Duck Suit, consisting of Coat, Vest and Trousers, handsomely made and fashioned; with mohair or silk braid, according to regulation, \$15.00

112. White Duck Suit, of extra quality of material, consisting of Coat, Vest and Trousers; braided on sleeves according to rank.....\$25.00

113. White Serge Suit, of good quality; well made and lined; Coat, Vest and Trousers.....\$35.00

114. White Serge Suit, consisting of Coat, Vest and Trousers, made of extra quality of material, handsomely trimmed; made by experienced hands. \$45.00

115. White Serge Suit, consisting of Coat, Vest and Trousers of superfine quality; fine silk lining; extra care taken to have the very best workmanship and material.....\$60.00

DUCK TROUSERS.

116. White Duck Trousers, Pair, \$1.50

117. White Duck Trousers of extra quality..... Pair, \$2.25

118. White Duck Trousers of superior quality.....Pair, \$3.50

119. White Duck Trousers of superfine grade..... ..Pair, \$4.50

Special attention given to perfection of fit and excellence of workmanship.

Our Motto: Good Quality—Good Workmanship.

YACHT CLUB BUTTONS.

120. New York Yacht Club Buttons—



	Doz.
Coat size, goldplated, \$1.50	
Jacket " " 1.25	
Vest " " .75	
Coat " rubber..... 1.00	
Jacket " "75	
Vest " "50	

124. Anchor Buttons—



	Doz.
Coat size, goldplated...\$1.00	
Vest " " .. .50	
Coat " rubber..... 1.00	
Vest " "50	

121. Larchmont Yacht Club Buttons—



	Doz.
Coat size, goldplated, \$1.50	
Vest " " .75	
Coat " rubber..... 1.00	
Vest " " .50	

125. Atlantic Yacht Club Buttons—



	Doz.
Coat size, goldplated...\$1.50	
Vest " "75	

122. American Yacht Club Buttons—



	Doz.
Coat size, goldplated...\$1.50	
Vest " "75	
Coat " rubber..... 1.00	
Vest " "50	

126. Brooklyn Yacht Club Buttons—



	Doz.
Coat size, goldplated...\$1.50	
Vest " "75	

123. Seawanhaka Corinthian Yacht Club Buttons—



	Doz.
Coat size, goldplated...\$1.50	
Vest " "75	
Coat " rubber..... 1.00	
Vest " "50	

127. Inland American Yacht Club Buttons—



	Doz.
Coat size, goldplated...\$1.50	
Vest " "75	

Buttons with special designs made to order.

RATING MARKS FOR SLEEVES.

NEW YORK YACHT CLUB REGULATIONS.

SAILING MASTER.—Two clear anchors, each an inch and a quarter in length, crossed at right angles, with stocks up, in silver. Under this a silver chevron of 115 degrees, point downward, consisting of three bars, each $\frac{3}{16}$ of an inch in width and $\frac{1}{16}$ of an inch apart, arms of chevron to be one inch and a quarter in length. The point of intersection of the anchors to be one inch above centre of upper bar of chevron.

FIRST MATE.—Same device as for Sailing Master, substituting a chevron of two bars.

SECOND MATE.—Same device as First Mate, substituting a chevron of one bar.

CHIEF ENGINEER.—Same device as First Mate, substituting a propeller of three blades, one inch and a quarter in diameter, in red silk, for the crossed anchors.

ASSISTANT ENGINEER.—Same device as for Chief Engineer, substituting a chevron of one bar.

SECOND ASSISTANT ENGINEER.—Same as Assistant Engineer, without chevron.

BOATSWAIN.—A spread eagle, U. S. N. pattern, $2\frac{3}{4}$ inches from tip to tip, in white silk.

QUARTERMASTER.—A ship's wheel of eight spokes, $1\frac{1}{2}$ inches in diameter, worked in white silk on blue, and in blue silk on white cloths.

COXSWAIN.—A pair of crossed oars in white silk, 2 inches in length, worked as per Quartermaster.



130. Sailing Master..\$1.00



131. First Mate..\$.80



132. Second Mate...\$.70



133. Chief Engineer, \$1.00



134. Asst. Engineer, \$.60



135. 2d Asst. Eng., \$.25

Where Silver Bullion for Embroidery is required, we use only the Best Quality.

RATING MARKS—Continued.

The following are Embroidered in Silk.



136. Boatswain . . . \$1.00



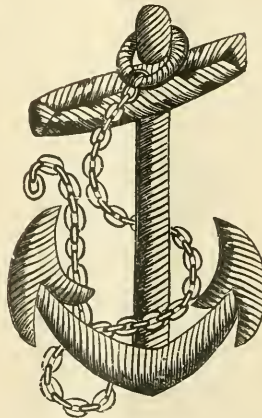
137. Quartermaster, \$0.75



138. Coxswain . . . \$0.50



138a. Foul Anchor, one inch, embroidered in real gold bullion . . . Each, \$0.90



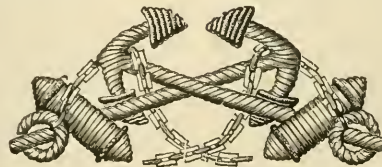
138d. Sailing Masters' Anchors, embroidered in real silver bullion . . . Each, \$1.00



138c. Anchor, one inch, plain embroidered in real gold bullion . . Each, \$0.75



138b. Foul Anchor, one and three-eighths inch, embroidered in real gold bullion Each, \$1.00



138e. Owners' Crossed Anchors, for cap, embroidered in real gold bullion.

Each, \$1.50

OFFICERS' CAPS.

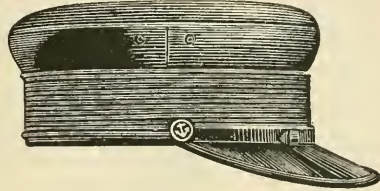


141, 142, 143.

141. NAVY STYLE CAP, of fast color blue cloth, finely finished; drooping visor.....Each, \$1.00

142. NAVY STYLE CAP, of finer cloth than No. 141.....Each, \$1.50

143. NAVY CAP, as No. 141, but of best dark blue cloth; satin lined.
Each, \$2.00

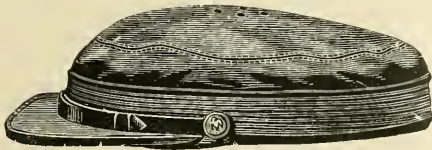


139, 140.

139. SAILING MASTER'S CAP, of fine dark blue cloth; warranted fast color; extra well made, with drooping visor.

Each, \$2.00

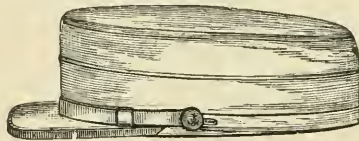
140. CAP as above, with oiled silk cover..... Each, \$2.50



144.

NAVY CAP.

144. SOFT TOP NAVY, of good blue cloth, warranted to hold its color; well made and durable. Straight visor, without ornaments.....Each, \$1.25

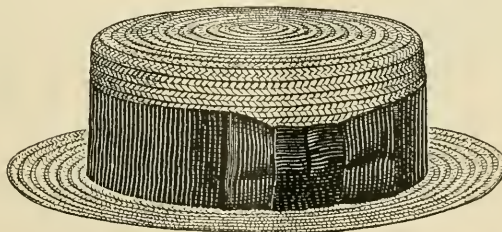


145, 146.

WHITE CAP.

145. WHITE DUCK NAVY CAP, with one cover.....Each, \$1.00

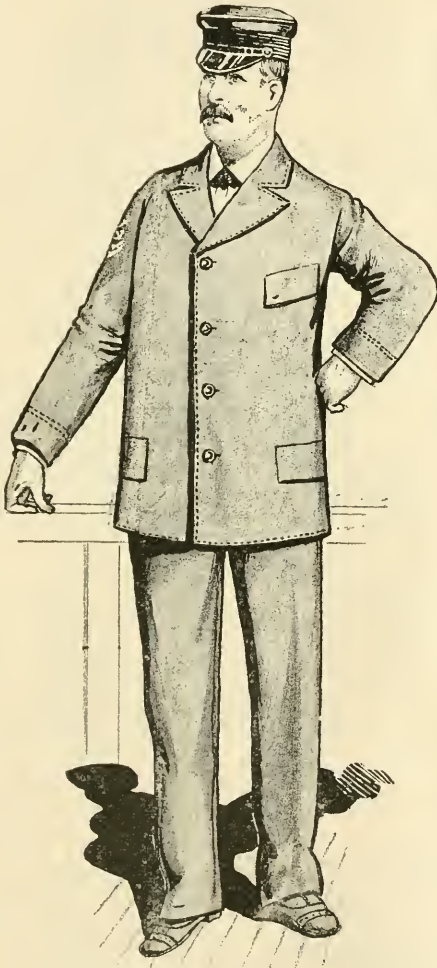
146. WHITE DUCK NAVY CAP, with two movable covers.....Each, \$1.25



147. WHITE STRAW HAT, of extra fine quality, for officer's use . . . Each, \$1.50

Estimates cheerfully and promptly furnished.

UNIFORMS FOR OFFICERS.



Sailing Master, Mate, Engineer, Assistant Engineer, Boatswain and Steward.

Suits are made of Blue cloth, as per samples and prices quoted below, lined, and with double sets of buttons (black and gold), put on with rings. Trousers are double stitched.

Prices as follows for suit of coat, vest and trousers :

148. Coat and Vest of cloth No. 155, and Trousers of cloth No. 149.

Suit, \$22.50

149. Coat, Vest and Trousers of cloth No. 149.....Suit, \$25.00

150. Coat, Vest and Trousers of cloth No. 150.....Suit, \$27.00

151. Coat and Vest of cloth No. 150, and Trousers of cloth No. 152.

Suit, \$30.00

152. Coat, Vest and Trousers of cloth No. 152..... Suit, \$35.00

Uniforms for Oilers, Firemen and Cooks.

Suits of dark blue cloth, consisting of Single-breasted Short Sack Coat, with Vest and Trousers, made from cloth as per samples, and at following prices :

153. Flannel, as sample.....\$16.00

154. Cloth, " 20.00

155. " " 22.00

Prices do not include specialty marks.
See page 7.

All Suits made to Individual Measure. NO READY-MADE GOODS KEPT ON HAND. A Perfect Fit can, therefore, be guaranteed.

SHOES FOR OFFICERS.



156, 157.

156. Russet leather shoe, of extra quality, made from carefully selected stock, well made and durable, heels with wooden pegs. Pair, \$3.00

157. Russet color shoe, of same style as No. 156, but of fine calfskin.

Per pair, \$4.00



159

159. Russet leather laced shoe, with flexible rubber sole. Pair, \$4.00



161

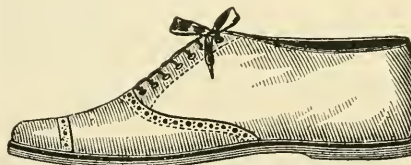
161. Brown canvas laced shoe, handsomely finished, with brown leather heel strap, ball strap and toe piece, with rubber sole. Pair, \$3.00



158

158. The shoe adapted for officer's wear is made from a fine russet leather, with leather sole, in Oxford tie. The shoe has no nails, and will not mar or track the deck, and is produced especially for yachting purposes. (See cut.)

Per pair, \$3.00



160

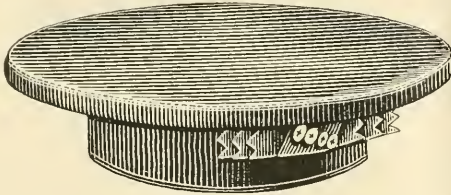
160. Russet leather Oxford tie, with flexible rubber sole Pair, \$3.50



162

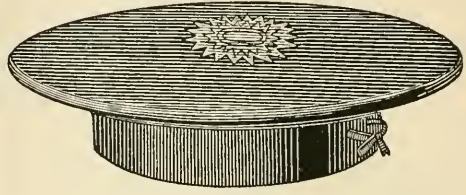
162. Brown canvas Oxford tie, handsomely finished, with brown leather heel strap, ball strap and toe piece, with rubber sole Pair, \$2.50

SAILOR CAPS.



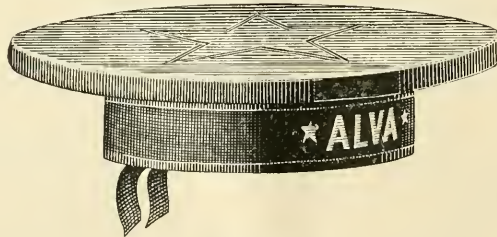
164

164. Soft top sailor's cap, full indigo cloth..... Each, \$1.00



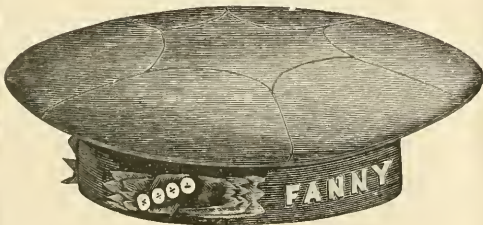
165

165. Blue cloth sailor's cap, fancy top..... Each, \$1.25



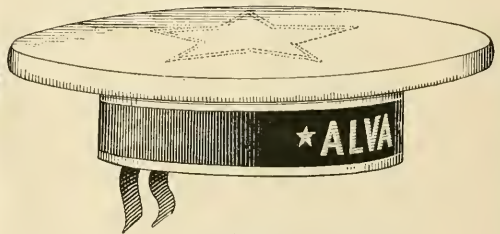
166

166. Blue cloth sailor's cap, with five pointed star top, with flexible band in crown..... Each, \$1.75



167

167. Blue cloth sailor's cap, with six-pointed star sewed in crown, and embroidered star in centre of top. Each, \$2.00



168

168. White duck sailor's cap, with star in centre..... Each, \$1.75

- 60. Gold painted ribbons for sailors' caps..... Each, \$0.50
- 61. Gold woven ribbons for sailors' caps..... " .75

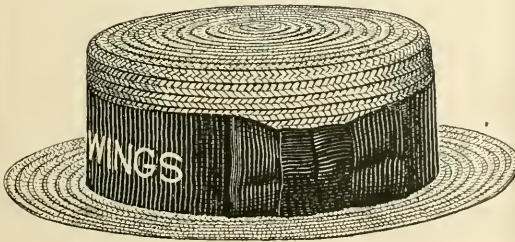
PEA JACKETS.



163½. U. S. Navy regulation Pea Jacket, made of heavy, pure indigo blue dyed, steam shrunk cloth, lined with flannel; wide collar; double breasted; made to order only \$16.00

164½. Pea Jacket as above in style, but made of heavier and finer cloth. \$20.00

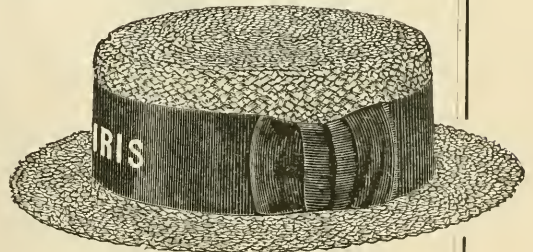
STRAW HATS.



162½

162½. White Braided Straw Hat, of good quality, with black broad ribbon band, with bow ; for seamen.

Each, \$1.00



163

163. SENNET HAT, good quality, broad ribbon with bow Each, 1.50

SAILOR SUITS.



SAILORS' SHIRTS.

169. Navy blue flannel shirts, with plain collars, of regulation width and depth; shield front; good grade.

Each, \$2.50

170. Navy blue flannel shirt, with front shield and wide collar; shirt is made in U. S. Navy regulation style, with three rows white braid and two embroidered stars on collar; two pockets on breast; white pearl buttons. The quality of material used is first-class in every particular, and of excellent workmanship. Warranted fast color..... Each, \$4.00

171. Shirt, same as No. 170 in general style, etc., but made of superfine material..... Each, \$5.00

172. Shirt, same as No. 170 in general style, etc., but made of cloth.

Each, \$5.50

REGULATION TROUSERS.

173. Trousers, cut full navy regulation, with broad fall front; black rubber buttons; silk lacing at waistband; made of fast color blue cloth.

Pair, \$4.00

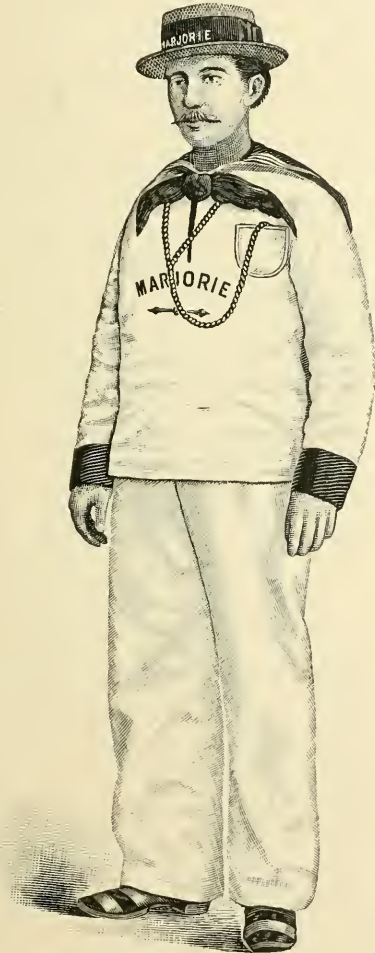
174. Trousers, cut full U. S. Navy regulation, with broad fall front; black rubber buttons; silk lacing at waistband; made of fine navy blue cloth.

Pair, \$5.00

175. Trousers, same style as No. 174, but made of extra quality blue cloth..... Pair, \$6.50

All our Trousers are strongly sewed and warranted first-class in every particular.

WHITE DRESS SUITS.



DRESS JUMPER.

176. White Dress Jumper or Shirt, made to correspond in every particular to U.S. Navy regulations, made of extra fine quality of duck, with cuffs and collar of blue flannel, of fast color; collar has three rows of white braid sewed near edge, with embroidered white star in each corner; pocket on breast.

Each, \$2.00

DRESS TROUSERS.

177. Trousers of fine white duck, made in ordinary style, with fly front.

Pair, \$1.50

178. Trousers of fine white duck, made in U. S. Navy style, but with draw string at waist. Pair, \$1.50

179. Trousers of U. S. regulation style, made of white duck, with broad fall front, insuring a neat fit. Same grade of material as jumper. Pair, \$2.00

NECKERCHIEFS.

180. Neckerchiefs, of black silk. Each, \$1.00

181. Neckerchiefs of fine black silk, of extra size. Each, \$1.50

LANYARDS AND KNIVES.

182. Navy regulation white cotton Lanyards. Each, \$0.50

183. Navy regulation Knives of extra quality. Each, \$0.50

Prices for Jumpers do not include embroidering name on front. See page 17 for prices.

WORKING SUITS.



WHITE WORKING SUIT.

184. White Duck working Jumper, well made, strongly sewed; good quality. (See illustration)..... Each, \$1.00

185. White Duck Working Trousers, well and strongly made, with draw string at waist. (See illustration).. Pair, \$1.00

186. White Duck Hat of same material as jumper and trousers. (See illustration)..... Each, \$0.50

BLUE WORKING SUIT.

187. Blue Denim Working Jumper, made of fast color, pure indigo dye, carefully made, strongly sewed, with white braid on collar. (See illustration.)
Each, \$1.25

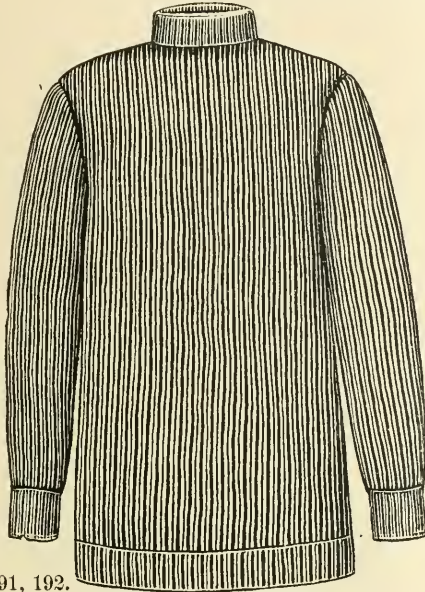
188. Blue Denim Working Trousers, same material and quality as jumper, with draw strings at waist... Pair, \$1.25

189. Blue Denim Hat, to match jumper and trousers..... Each, \$0.60

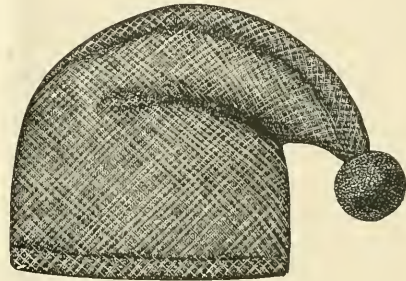
OVERALLS.

190. Oilers' and Firemen's Blue Dungaree Suits, consisting of sack coat or jumper, with overalls.... Suit, \$2.00

GUERNSEYS AND HOODS.

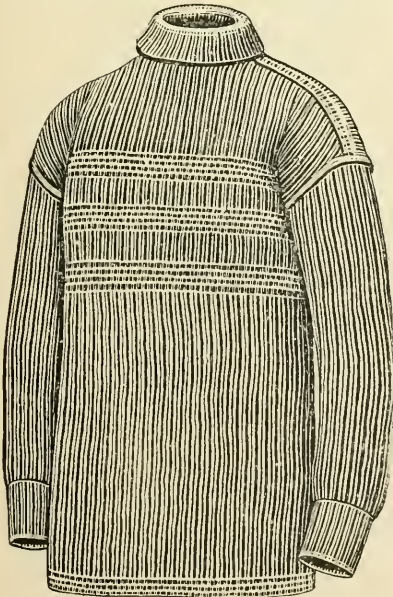


191, 192.



195

RACING HOODS, of woven worsted,
made in color to match guernseys.
Each, \$1.25



193



194

For Prices of Guernsey see next page.

Yacht's name embroidered on front of shirts, guernseys and jumpers at.. Each, \$0.75
Yacht's name embroidered on front of shirts, guernseys and jumpers, with
anchor underneath name..... Each, 1.00

GUERNSEYS.

See Illustrations on Page 16.

191. Guernsey, of fast color, made of worsted, in black, blue and white; good durable grade. Each \$2.50

192. Guernsey, of extra quality, fast color; well made. We have them in white, blue and black Each, \$3.50

193. Guernsey, of superior quality, finely made, fast color; made of extra fine stock; in black, white and blue. Each, \$4.50

194. Diamond pattern of Guernsey, elegant in appearance, durable, reliable and of extra quality of wool; made in black, blue and white. Each, \$5.00

Prices of Guernseys do not include embroidery on front.

EMBROIDERED NAMES FOR FRONT OF GUERNSEYS, SHIRTS AND JUMPERS.

196. Yacht's name embroidered on front of shirts, guernseys and jumpers at. Each, \$0.75

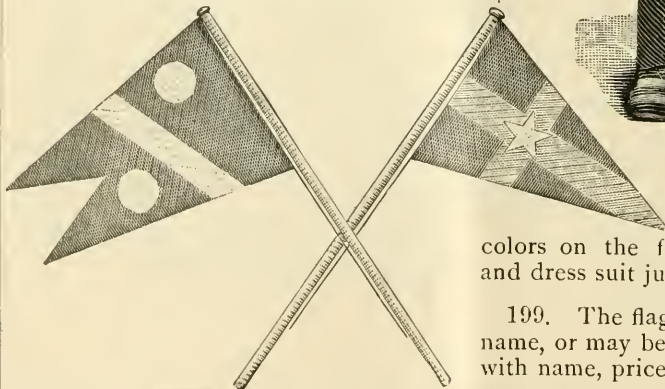
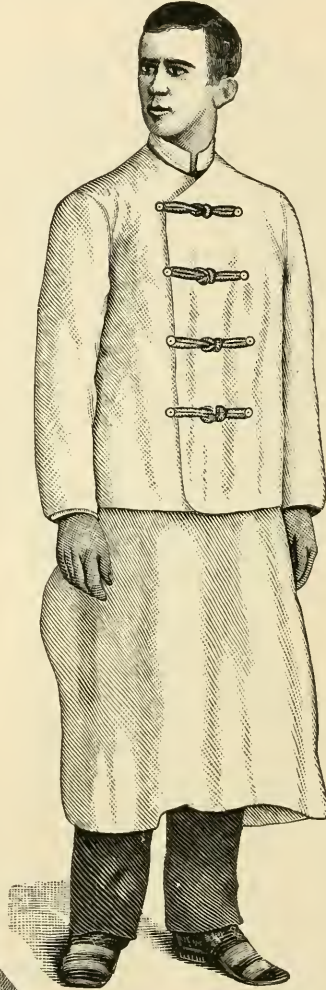
197. Yacht's name embroidered on front of shirts, guernseys and jumpers, with anchor underneath name. Each, \$1.00

SIGNAL AND CLUB FLAG EMBROIDERED ON GUERNSEYS, ETC.

198. The attention of yachtsmen is called to the fact that their private sig-

STEWARDS' OUTFIT.

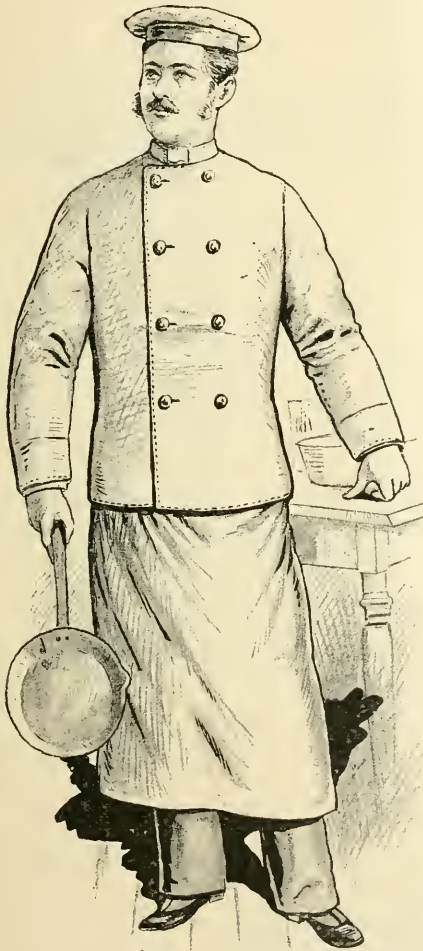
For Prices see Next Page.



nal, and the burgee of the club of which they may be members, will be embroidered in their proper colors on the front of shirts, guernseys and dress suit jumpers at. . . . Each, \$1.25

199. The flags may be used in place of name, or may be embroidered under it; if with name, price will be. . . . Each, \$1.75

COOKS' OUTFITS.



STEWARDS' OUTFITS.

200. Very heavy white shrunk Drilling Coats, single breasted, turned-down collar..... Each, \$1.25

201. Very heavy white shrunk Drilling Coat, single-breasted, turned-down collar..... Each, \$1.75

202. White shrunk Duck Coat, single-breasted, extra quality.
Each, \$2.50

203. White shrunk Duck double-breasted Coat, with silk cord loops. (See illustration)..... Each, \$3.00

204. Stewards' white Aprons.
Each, \$0.35

205. Stewards' White Duck Vests.
Each, \$1.50

COOKS' OUTFITS.

206. Heavy white shrunk Drill double-breasted Coat, with standing collar..... Each, \$1.50

207. Extra heavy white shrunk Duck double-breasted Coat, with standing collar..... \$2.00

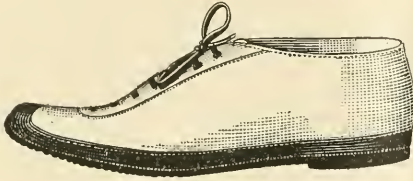
208. White Aprons..... Each, .50

209. White Caps..... " .25

210. Check Aprons..... " .45

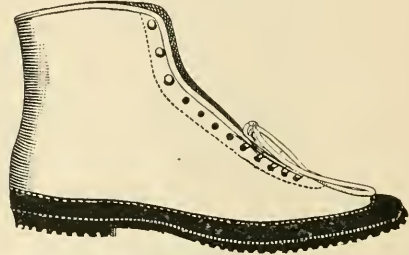
211. Striped Cotton Trousers.
Each, 1.25

SEAMEN'S SHOES.



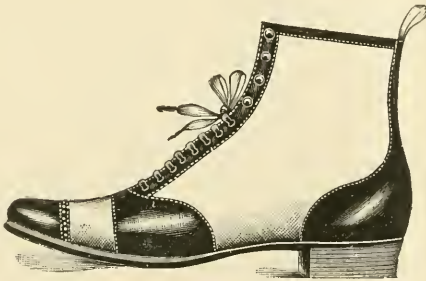
212.

212. White canvas Oxford shoe, first-class quality, with pure rubber sole; will not soil deck.....Pair, \$1.00



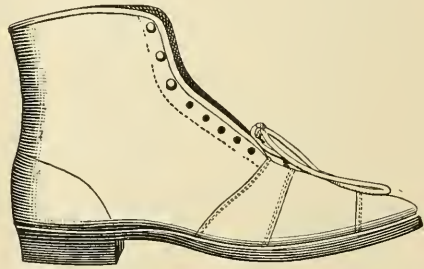
213.

213. White canvas, high laced shoe of extra quality; will not soil deck. Pair, \$1.25



214.

214. Cut shows the proper shoe for foremast hand. It is made of heavy white canvas, with real calfskin toe-piece, ball strap and heel strap, and has heavy leather sole fastened with soft wooden pegs, and will not stain or mar the deck.....Pair, \$1.50



215.

215. The latest idea in shoes for foremast hands, made entirely of heavy white canvas, with heel strap, ball strap, and toe-piece of same material; heavy leather soles, fastened with soft wooden pegs, thus preventing marring of deck. Pair, \$1.50



216.

216. Heavy leather slippers, pegged soles, for oilers' and firemen's use. . Pair, \$1.25

RUBBER BOOTS.

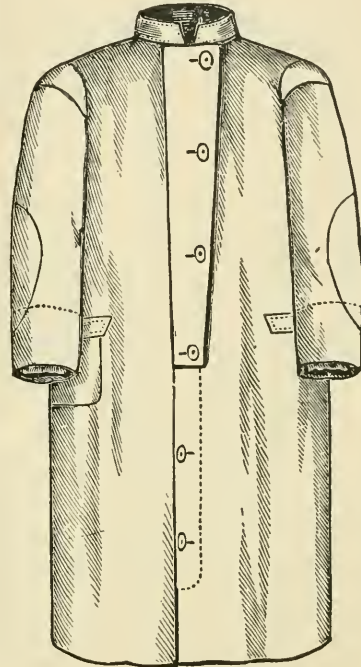


217, 218.

217. Rubber Boots of good quality.
Pair, \$3.00

218. Rubber boots of extra quality;
warranted to wear well, and give perfect
satisfaction..... Pair, \$3.50

OILED CLOTHING.



219, 220, 221.

219. Captain's or Owner's long coat,
made of extra quality oiled muslin;
double thickness; flannel lined collar;
patched elbows, epaulettes, and inside
sleeves; the very best quality, made es-
pecially for this house..... Each, \$5.00

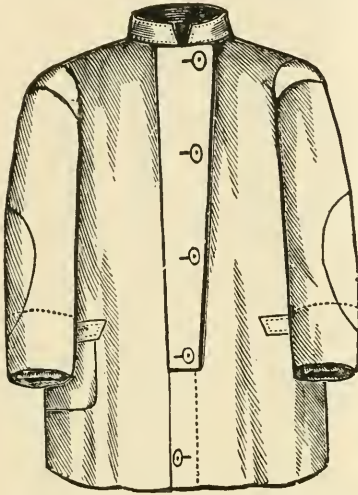
220. Officers' long coats, made in
yellow or black; doubled muslin, patched
sleeves, epaulettes, inside sleeves, flan-
nel lined collar; quality A1. Each, \$3.50

221. Officers' long coats, made in
same style as No. 220, but of coarser
material; a good wearing coat.

Each, \$2.75

Cheaper grades can be had, but, as we
do not handle cheap grades of goods, we do
not quote them here.

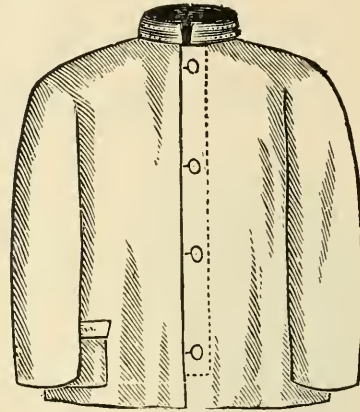
OILED CLOTHING.



222, 223.

222. Medium long coat, doubled oiled muslin, patched elbows; flannel lined collar, inside sleeves, epaulettes; finest grade..... Each, \$2.25

223. Medium coat, in every respect the same style as No. 222, but grade B. Each, \$2.00

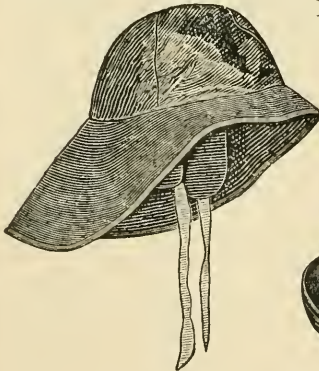


224, 225.

224. Jackets of doubled oiled muslin; strongly sewed and well finished.

Each, \$1.25

225. Jackets same style as No. 224, but quality B..... Each, \$1.10



226.

226. Sou'wester of oiled muslin; soft finished, lined with flannel, with neck and ear flaps; made in all sizes, and either yellow or black. (See illustration)..... Each, \$0.60



228.

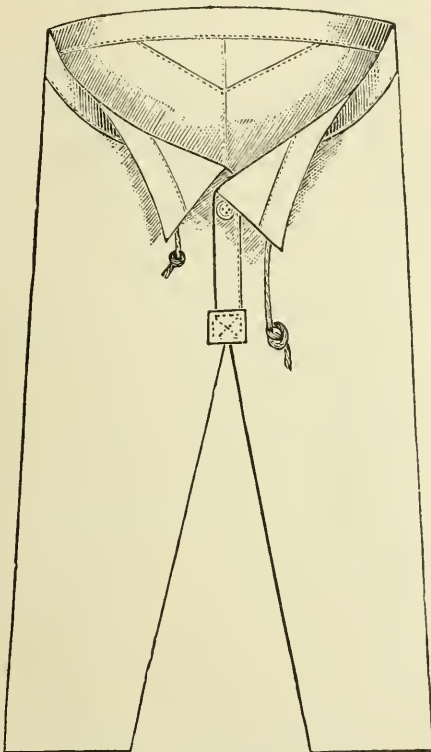
228. New style oiled muslin hat; the most comfortable hat made; extra wide and long brim; perfect protection in stormy weather..... Each, \$1.00



227.

227. Cape Ann Hat, of oiled muslin, waterproof, with soft crown; semi-stiff

OILED CLOTHING—Continued.



229, 230.

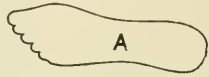
229. Seamen's string pants, oiled muslin, best grade. Pair, \$1.25

230. Same as, No. 229, but quality B. Pair, \$1.00

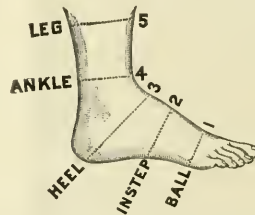
MEASUREMENT FOR SHOES.

Place the foot on a piece of paper, and draw a pencil line around to give the length, breadth, and natural shape, as in diagram A.

The pencil should be held vertically, or the outline will not represent the foot. The measure to be taken medium tight over the stocking, in inches.



Take the following measures :



1. Ball of foot.
2. Instep.
3. Heel.
4. Ankle.
5. Top.

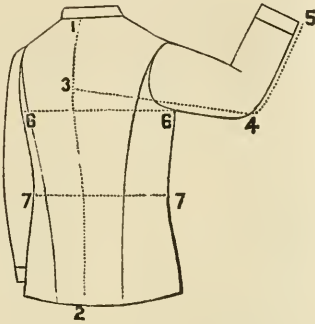
State the size usually worn. The size and letter indicating the width will usually be found marked on the lining of the old shoe, thus : 3—meaning size 3, width C.

MEASUREMENT FOR CAP.

To obtain the correct cap size, if the hat you are in the habit of wearing is not marked, take a strip of paper and draw it tightly around the largest part of the head and have the ends just meet, then measure the length of the paper. The figures below will give you the size according to hatters' measure. One-eighth of an inch either way will make no difference.

21 in. around the head will be hat size, $6\frac{5}{8}$		
$21\frac{1}{2}$	"	" — $6\frac{3}{4}$
$21\frac{2}{3}$	"	" — $6\frac{1}{3}$
$22\frac{1}{4}$	"	" — 7
$22\frac{1}{2}$	"	" — $7\frac{1}{8}$
23	"	" — $7\frac{1}{4}$
$23\frac{3}{8}$	"	" — $7\frac{3}{8}$
$23\frac{3}{4}$	"	" — $7\frac{1}{2}$
24	"	" — $7\frac{5}{8}$

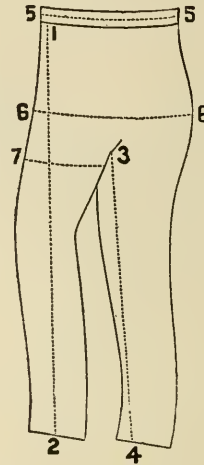
DIRECTIONS FOR TAKING CORRECT MEASUREMENTS.



TO TAKE COAT MEASUREMENT.—All coat measures should be taken over vest, snug. Measure from 1 to 2 for length of coat; now raise the arm to a level with the shoulder and bend the forearm at right angles with the body, measuring from centre of back, 3 to 4, and from 3 to 5 for sleeve length. The breast measure, 6, should be taken carefully by placing the tape around the breast, and having it close up under the arms, so that it will go over the largest part of the shoulder blades. Draw the tape measure snugly to get the correct waist measure at 7. **BLOUSE** should be sufficiently long to cover seat.

Measurement for Seaman's Shirt, Guernsey, and Jumper.

Place tape around the body close up under the arms for breast size. Give exact measurements. Due allowance for fullness will be made for shirt. Measure from centre of back to ball of hand for sleeve length.



FOR TROUSERS.—The trousers should be well drawn up, legs straight and slightly parted, body erect. Measure from top of waistband, 1, to bottom of leg, 2. For inseam, measure from crotch 3, to bottom of leg, 4. Waist measure, 5, should be taken over shirt. The other measurements as marked. All trousers will be cut medium width legs, with side pockets, unless otherwise ordered.

Be sure to give height and weight, and whether square or sloping shoulders.

FOR VEST.—Place end of tape at collar button at back of neck, and measure to bottom of front vest to obtain length.

Seamen's Overalls and Trousers.

Measure from crotch to bottom of heel of shoe for length, and around waist over shirt snug.