

NEW YORK FASHIONS



National Cloak & Suit Co.
New York City

Order Blanks for our Made-to-Measure Garments will be found in the front of this Catalogue.

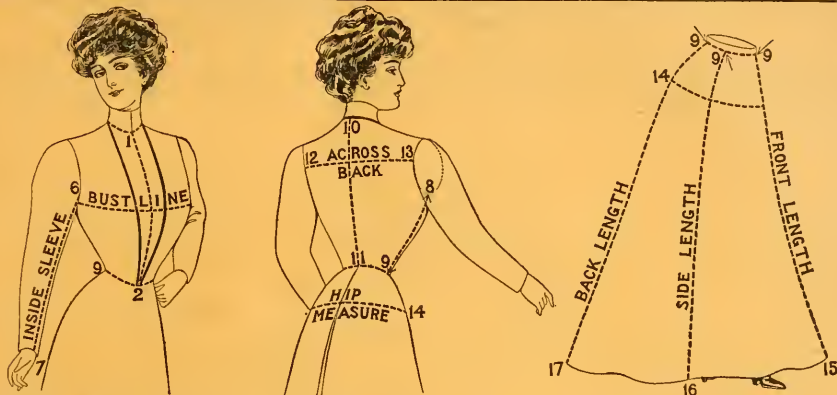
Order Blanks for our Ready-Made Goods will be found in the back of this Catalogue.

Extra Order Blanks furnished free on request.

The
Winterthur
Library

The entire contents of this Catalogue are absolutely protected by copyright and are registered in the National Cloak & Suit Company. Neither the illustrations, diagrams nor other matter can be used in any way whatsoever without our written permission.

Do not confuse the NATIONAL CLOAK & SUIT CO. with any other concern that attempts to imitate our Catalogue or advertising. We have no agents or branches and have no connection with any other house. Any one claiming to represent us is a swindler. Be sure to mail your order direct to us—NATIONAL CLOAK & SUIT CO., 207-217 West 24th Street, New York City.



USE THIS BLANK ONLY FOR ORDERING THE MADE-TO-MEASURE GARMENTS SHOWN ON PAGES 9 TO 36 OF THIS CATALOGUE.

IN TAKING MEASUREMENTS DO NOT MAKE ANY ALLOWANCE FOR SEAMS. USE AN ACCURATE TAPE MEASURE, AND BE SURE IT IS NOT DISFIGURED OR TORN.

MEASUREMENTS FOR JACKET--STYLE No.

Bust Measure:—All around body, well up under arms, over largest part of bust; not too tight.

(Do not allow tape measure to slip down in back. If your bust measure is over 42 inches, there will be an extra charge of 10 per cent. See paragraph 13, page 8.)

Waist Measure:—Entirely around waist. (Make no allowance for dip or for lapping. See 9 in illustration above.)

Hip Measure:—All around body six inches below waist line, not tight. (See 14 in illustration above.) Do not allow tape measure to slip up or down when taking this measurement.

Neck Measure:—All around neck over dress collar at bottom of collar. (See 1 in illustration above.)

Neck to Waist, Front:—From collar seam (1) to waist line (2) as shown in illustration above. (Read "NOTE" below.)

Special Measurement:—Begin at center of waist line (point 2 in above illustration) and measure up and around back of neck and return to point 2, as shown by the heavy line.

Length of Sleeve, Inside Seam:—(Not Outside Seam.) (See 6 to 7 in above illustration.) Take this measurement from armhole to wrist, with arm hanging in position as shown. Give full length of sleeve; we will make the necessary allowance if short sleeve is wanted.

Do you wish Long or

Three-Quarter Length Sleeves?

Length Under Arm:—From armhole seam where arrow points (8) to waist line (9). Do not raise your arm when this measurement is being taken. Read "NOTE" below.

Neck to Waist, Back:—Measure from collar seam (10) to waist line (11) as illustrated in above diagram. Read "NOTE" below.

Across Back:—Between armhole seams as shown in diagram from 12 to 13. (Take this measurement four inches below collar seam in back.)

What Length Jacket:—Measure from collar seam in the back to the length desired. See paragraph 17 page 7.

Jacket Lining Desired:

State whether you wish jacket lined with our Good Satin, Taffeta Silk or our Best Satin, which is Skinner's. There is an extra charge for lining with Taffeta Silk or Skinner's Satin, as stated at the bottom of each description of Tailor-made Suits.

Color of Lining Desired in Jacket:

With 1st choice of material.

With 2d choice of material.

RAIN COAT In sending measurements for a RAIN COAT, give jacket measurements as called for on this diagram, and in addition, give full length from collar seam down center of back to desired length.

MEASUREMENTS FOR SKIRT--STYLE No.

Waist Measure:—Entirely around waist. (See 9 in illustration above.) Remove your outside belt when taking this measurement. Do not allow for dip or for lapping.

Hip Measure:—All around body six inches below waist line, not tight. (See 14 in illustration above.) Do not allow tape measure to slip up or down when taking this measurement. If your hip measure is more than 48 inches, there will be an extra charge of 10 per cent. See paragraph 13, page 6.

Front Length:—From waist line (9) to desired length (15) as shown in diagram. (Take this

measurement from bottom of skirt-band in front where arrow points.)

Side Length:—From waist line (9) to desired length (16) as shown in diagram. (Take this measurement from bottom of skirt-band on side where arrow points.)

Back Length:—From waist line (9) to desired length (17) as shown in diagram. (Take this measurement from bottom of skirt-band in back where arrow points.)

NOTE: Tie a cord around your waist to locate the NATURAL WAIST LINE.

Do not remove it until your measurements are completed. THIS IS IMPORTANT.

BE SURE TO READ PAGES 6, 7 AND 8 CAREFULLY BEFORE SENDING US YOUR ORDER.

FILL IN BOTH SIDES OF THIS ORDER BLANK IN INK.

SEE PAGES 9 TO 36 FOR ILLUSTRATIONS OF GARMENTS TO WHICH THESE MEASUREMENTS APPLY.

BLANKS FOR ORDERING THE READY-MADE GOODS SHOWN ON PAGES 37 TO 56 WILL BE FOUND IN BACK OF THIS CATALOGUE.

NATIONAL CLOAK AND SUIT COMPANY,

207 TO 217 WEST TWENTY-FOURTH STREET, NEW YORK CITY.

I send you this order with the understanding that if the garment you make for me does not fit, or is not entirely satisfactory, I may return it in good condition within three days of its receipt, at your expense, and you will refund my money, or you will make me another garment, whichever I prefer.

Name (Mrs. or Miss) No. Street or Avenue.
(Send Mail matter to this address.)

Town County State

Express Office Express Company
(Send Express packages to this address.)

Jacket or Waist No.	Page No.	} Quality	Price \$
Skirt No.	Page No.		
Rain Coat No.	Page No.	Quality	Price \$

In ordering a suit to be made to measure, if you wish the jacket of one style and the skirt of another, please state your selections clearly. See page 8 for particulars as to prices.

Enclosed find { P. O. Money Order
Express Money Order
N. Y. Bank Draft
Check } for \$

(Read paragraphs 3 and 4, page 6.) (Mark X opposite the words describing your remittance.)

What is your height?

What is your weight?

Do you stand very erect?

If there is any peculiarity or irregularity in your figure, please describe fully in a letter to accompany this order.

Have you had any previous correspondence relative to this order?

Have you read paragraphs 1, 2, 3 and 4 below?

Have you ever ordered from us before?

Please state in what publication you saw our advertisement. Some ladies fail to do this. Will you be kind enough to answer this question?

Do not write anything in this space.

PIN OR SEW HERE YOUR FIRST CHOICE OF CLOTH.

PIN OR SEW HERE YOUR SECOND CHOICE OF CLOTH.

PLEASE ATTACH THE SAMPLES SECURELY.

OUR TERMS.

We do a strictly cash business and carry no charge accounts.

If you wish goods sent C. O. D. we require a deposit of at least one-third the amount of your order, in which case they will be sent C. O. D. by express for the balance, but on such shipments the customer must pay the expressage and also pay the Express Company's charge for sending the money to us. We will not ship C. O. D. without the required deposit. Goods sent C. O. D. must go by express as they cannot be mailed.

All orders for points outside of the United States must be fully paid for in advance.

We can accept orders only on these terms.

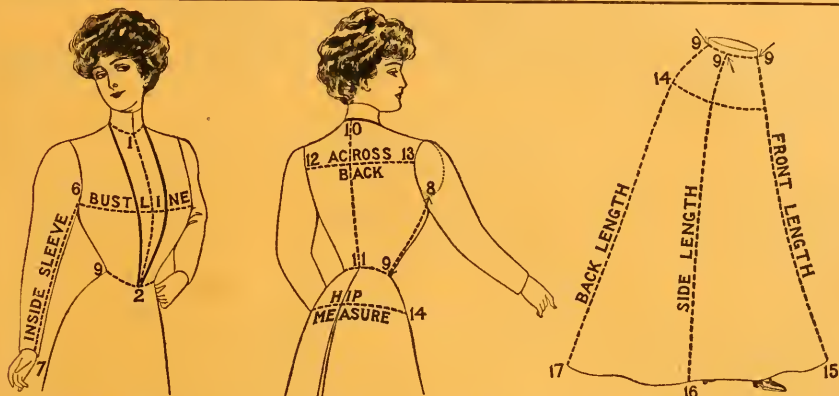
- 1.—We urge you to carefully examine your order before mailing it, to make sure that the measurements are accurate, that the correct style numbers are mentioned and that the order is complete in every detail. We require the measurements taken from your figure—not from an old garment. Please read carefully the description of the garment you order.
- 2.—In our endeavor to fill orders promptly, we usually start to make the garment the same day the order is received; therefore we cannot always comply with requests sent later to have changes made.
- 3.—Do not fail to attach samples of the materials you select in the spaces provided for them above. You can help us fill your order promptly, if you will make two selections of material, so that if the first should be sold out we can make the garment from your second choice. Do not make a second selection unless you are willing that we should use it, if necessary. *We always use the first selection if we have the material when the order reaches us.*
- 4.—**BLACK AND MOURNING GARMENTS.**—In ordering a black garment, it is always advisable to mention whether it is to be lined and trimmed with black or not. When ordering a garment for mourning or second mourning wear, kindly state this fact distinctly, so that we may use the proper linings and trimmings.

Additional Order Blanks furnished on request.

THE RELIABLE MEASUREMENT CHART

Copyright, 1907, by NATIONAL CLOAK AND SUIT COMPANY. All rights reserved.

3



USE THIS BLANK ONLY FOR ORDERING THE MADE-TO-MEASURE GARMENTS SHOWN ON PAGES 9 TO 36 OF THIS CATALOGUE.

IN TAKING MEASUREMENTS DO NOT MAKE ANY ALLOWANCE FOR SEAMS. USE AN ACCURATE TAPE MEASURE, AND BE SURE IT IS NOT DISFIGURED OR TORN.

MEASUREMENTS FOR JACKET--STYLE No. _____

Bust Measure:—All around body, well up under arms, over largest part of bust; not too tight. (Do not allow tape measure to slip down in back. If your bust measure is over 42 inches, there will be an extra charge of 10 per cent. See paragraph 13, page 6.)

Waist Measure:—Entirely around waist. (Make no allowance for dip or for lapping. See 9 in illustration above.)

Hip Measure:—All around body six inches below waist line, not tight. (See 14 in illustration above.) Do not allow tape measure to slip up or down when taking this measurement.

Neck Measure:—All around neck over dress collar at bottom of collar. (See 1 in illustration above.)

Neck to Waist, Front:—From collar seam (1) to waist line (2) as shown in illustration above. (Read "NOTE" below.)

Special Measurement:—Begin at center of waist line (point 2 in above illustration) and measure up and around back of neck and return to point 2, as shown by the heavy line.

Length of Sleeve, Inside Seam:—(Not Outside Seam.) (See 6 to 7 in above illustration.) Take this measurement from armhole to wrist, with arm hanging in position as shown. Give full length of sleeve; we will make the necessary allowance if short sleeve is wanted.

Do you wish Long or

Three-Quarter Length Sleeves? _____

Length Under Arm:—From armhole seam where arrow points (8) to waist line (9). Do not raise your arm when this measurement is being taken. Read "NOTE" below.

Neck to Waist, Back:—Measure from collar seam (10) to waist line (11) as illustrated in above diagram. Read "NOTE" below.

Across Back:—Between armhole seams as shown in diagram from 12 to 13. (Take this measurement four inches below collar seam in back.)

What Length Jacket:—Measure from collar seam in the back to the length desired. See paragraph 17 page 7.

Jacket Lining Desired: _____

State whether you wish jacket lined with our Good Satin, Taffeta Silk or our Rest Satin, which is Skinner's. There is an extra charge for lining with Taffeta Silk or Skinner's Satin, as stated at the bottom of each description of Tailor-made Suits.

Color of Lining Desired in Jacket:—

With 1st choice of material _____

With 2d choice of material _____

RAIN COAT In sending measurements for a RAIN COAT, give jacket measurements as called for on this diagram, and in addition, give full length from collar seam down center of back to desired length.

MEASUREMENTS FOR SKIRT--STYLE No. _____

Waist Measure:—Entirely around waist. (See 9 in illustration above.) Remove your outside belt when taking this measurement. Do not allow for dip or for lapping.

Hip Measure:—All around body six inches below waist line, not tight. (See 14 in illustration above.) Do not allow tape measure to slip up or down when taking this measurement. If your hip measure is more than 48 inches, there will be an extra charge of 10 per cent. See paragraph 13, page 6.

Front Length:—From waist line (9) to desired length (15) as shown in diagram. (Take this

measurement from bottom of skirt-band in front where arrow points.)

Side Length:—From waist line (9) to desired length (16) as shown in diagram. (Take this measurement from bottom of skirt-band on side where arrow points.)

Back Length:—From waist line (9) to desired length (17) as shown in diagram. (Take this measurement from bottom of skirt-band in back where arrow points.)

NOTE: Tie a cord around your waist to locate the NATURAL WAIST LINE.

Do not remove it until your measurements are completed. THIS IS IMPORTANT. BE SURE TO READ PAGES 6, 7 AND 8 CAREFULLY BEFORE SENDING US YOUR ORDER.

FILL IN BOTH SIDES OF THIS ORDER BLANK IN INK.

BLANKS FOR ORDERING THE READY-MADE GOODS SHOWN ON PAGES 37 TO 68 WILL BE FOUND IN BACK OF THIS CATALOGUE.

NATIONAL CLOAK AND SUIT COMPANY,

207 TO 217 WEST TWENTY-FOURTH STREET, NEW YORK CITY.

I send you this order with the understanding that if the garment you make for me does not fit, or is not entirely satisfactory, I may return it in good condition within three days of its receipt, at your expense, and you will refund my money, or you will make me another garment, whichever I prefer.

Name (^{Mrs.} or Miss) No. Street or Avenue
(Send Mail matter to this address.)

Town County State

Express Office Express Company
(Send Express packages to this address.)

Jacket or Waist No.	Page No.	} Quality	Price \$
Skirt No.	Page No.		
Rain Coat No.	Page No.	Quality	Price \$

In ordering a suit to be made to measure, if you wish the jacket of one style and the skirt of another, please state your selections clearly. See page 8 for particulars as to prices.

Enclosed find { *P. O. Money Order*
Express Money Order
N. Y. Bank Draft
Check } for \$

(Read paragraphs 5 and 4, page 6.) (Mark X opposite the words describing your remittance.)

What is your height?

Have you read paragraphs 1, 2, 3 and 4 below?

What is your weight?

Have you ever ordered from us before?

Do you stand very erect?

Please state in what publication you saw our advertisement. Some ladies fail to do this. Will you be kind enough to answer this question?

If there is any peculiarity or irregularity in your figure, please describe fully in a letter to accompany this order.

Have you had any previous correspondence relative to this order?

Do not write anything in this space.

PIN OR SEW HERE YOUR
FIRST CHOICE OF CLOTH.

PIN OR SEW HERE YOUR
SECOND CHOICE OF CLOTH.

PLEASE ATTACH THE SAMPLES SECURELY.

OUR TERMS.

We do a strictly cash business and carry no charge accounts.

If you wish goods sent C. O. D. we require a deposit of at least one-third the amount of your order, in which case they will be sent C. O. D. by express for the balance, but on such shipments the customer must pay the expressage and also pay the Express Company's charge for sending the money to us. We will not ship C. O. D. without the required deposit. Goods sent C. O. D. must go by express as they cannot be mailed.

All orders for points outside of the United States must be fully paid for in advance.

We can accept orders only on these terms.

- 1.—We urge you to carefully examine your order before mailing it, to make sure that the measurements are accurate, that the correct style numbers are mentioned and that the order is complete in every detail. We require the measurements taken from your figure—not from an old garment. Please read carefully the description of the garment you order.
- 2.—In our endeavor to fill orders promptly, we usually start to make the garment the same day the order is received; therefore we cannot always comply with requests sent later to have changes made.
- 3.—Do not fail to attach samples of the materials you select in the spaces provided for them above. You can help us fill your order promptly, if you will make two selections of material, so that if the first should be sold out we can make the garment from your second choice. Do not make a second selection unless you are willing that we should use it, if necessary. *We always use the first selection if we have the material when the order reaches us.*
- 4.—BLACK AND MOURNING GARMENTS.—In ordering a black garment, it is always advisable to mention whether it is to be lined and trimmed with black or not. When ordering a garment for mourning or second mourning wear, kindly state this fact distinctly, so that we may use the proper linings and trimmings.

Additional Order Blanks furnished on request.

WHY YOU SHOULD ORDER FROM US.

Every article in this Catalogue is guaranteed to be exactly as illustrated and described.

The garments shown on pages 9 to 36 are made to order in strict accordance with the measurements sent us; such orders are filled within one week or ten days. All the goods illustrated on pages 37 to 68 are ready-made, and as we carry large quantities in stock, orders can be filled the same day as received.

Our broad business policy of promptly refunding money in case of dissatisfaction and of paying forwarding charges as well as return postage or expressage means that our patrons take no risk whatever in dealing with us.

We endeavor to fill every order so carefully that the customer will not only continue to patronize us but will recommend us to her friends.

Our business depends upon the satisfaction we give our customers. The better they are pleased, the bigger our establishment is bound to become.

That is why our business has steadily increased since its organization nineteen years ago and that is why it will continue to grow.

Ordering from this Catalogue means that you will secure the latest New York materials at the very lowest prices, backed by our guarantee as to workmanship and quality.

The success of our exclusive system of making perfect fitting garments from measurements sent us by mail can be vouched for by over 500,000 women who have sent us their orders. Measurements for our made-to-order suits,

skirts, jackets and rain-coats can be easily taken by any member of your household who will follow the simple directions given on the measurement charts in the front of this Catalogue.

Samples of the materials used in the making of our made-to-order garments illustrated on pages 9 to 36 will be sent free on request. If you will mention colors preferred, we will send you a large assortment of exactly what you wish.

If you send your orders to us you are sure to be fashionably attired in the latest New York style, and you will be entirely relieved of all dressmaking troubles.

The splendid facilities afforded by our new eleven-story building shown on the back cover of this Catalogue, enable us to give each and every order the prompt attention it deserves.

We have inaugurated such systems and have increased our force of assistants in every department so that delays and disappointments are quite improbable.

If at any time any of our customers are not entirely satisfied with their purchase or our service in any particular, they cannot do us a greater favor than by calling our attention to the matter in order that prompt and proper adjustment may be made.

We extend a cordial invitation to all our friends to visit us that they may learn of our unequalled facilities for taking care of our trade and observe the clean and healthful conditions which prevail in every department—a guarantee of good workmanship.

OUR GUARANTEE.

We guarantee to fit you perfectly and to give you entire satisfaction.

Anything ordered from us which is not entirely satisfactory may be returned in good condition, within three days of its receipt, at our expense, and we will cheerfully and promptly refund your money.

If a garment that we make to order for you is not satisfactory, we will alter it without charge, make you another garment, or, if you prefer, we will refund your money. Ready-made goods that are not satisfactory may be returned at our expense, and we will exchange them or refund your money, whichever you prefer.

REMEMBER—WE PAY TRANSPORTATION BOTH WAYS.

FACTS OF IMPORTANCE.

READ BEFORE ORDERING, SO THAT MISTAKES AND DELAYS MAY BE AVOIDED.

1. The National Cloak and Suit Company is a corporation of the State of New York, with a paid-in capital of **One Million Dollars**. It occupies exclusively an eleven-story modern-equipped building at 207, 209, 211, 213, 215 and 217 West 24th Street, in New York City's fashion center.
Reference: any Bank or Express Company.

2. How to learn the cost of a made-to-order garment. To distinguish the value of our materials, we have graded them according to quality. Our samples are labeled Quality A, B, C, D, E, F, and G, the lowest grade being marked Quality A.

Under the description of each suit, skirt, jacket and rain-coat, are given prices for making it to order from these various grades of material. For instance: should you wish a suit made like style No. 1016 from any of our fabrics labeled Quality A the price would be \$11.00; if made from Quality B material, the price would be \$12.50; and so on up to \$20.75 for the garment if made from Quality G material.

3. How to Send Money. Remit either by Post Office Money Order, Express Money Order, New York Bank Draft or Check payable to "National Cloak and Suit Company, New York City." We recommend either Post Office Money Orders or Express Money Orders, as they are absolutely safe and a convenient way to send money; moreover, in case of loss in the mails, you are protected.

It is not safe to send cash; but if you cannot remit in any other way, enclose the money in registered envelope, seal it securely and be sure to have it registered.

Always send an amount sufficient to cover the cost of your order; better send too much than too little. All sums over ten cents in excess of your purchase will be promptly refunded after your order is filled.

4. Our Terms. We do a strictly cash business and carry no charge accounts.

If you wish goods sent C. O. D., we require a deposit of at least one-third the amount of your order, in which case they will be sent C. O. D. by express for the balance, but on such shipments the customer must pay the expressage and also pay the Express Company's charge for sending the money to us. We will not ship C. O. D. without the required deposit. Goods sent C. O. D. must go by express as they cannot be mailed.

All orders for points outside of the United States must be fully paid for in advance.

We can accept orders only on these terms.

5. Acknowledgment of Orders. Every order for a made-to-measure garment will be acknowledged by postal card the day it reaches us. If you do not receive our card within a reasonable time after mailing your order please notify us. Be sure to state the exact date you sent the order the amount enclosed, and whether the remittance was in the form of a Post Office Money Order, Express Money Order or Bank Draft.

Orders for ready-made goods are usually filled the day they are received; therefore, no acknowledgment is necessary.

6. Time required for Filling of Orders. We usually fill orders for the garments shown on pages 9 to 36 within one week, notwithstanding that we cut and make them to order. To avoid delay, please make two selections of material, so that if the first should be sold out, we can make the garment from your second choice. Do not make a second selection unless you are willing that we shall use it if necessary. We always use the first selection if we have the material when the order reaches us.

In our endeavor to fill orders promptly, we usually start to make the garment the same day the order is received; therefore we cannot always comply with requests sent later to have changes made.

Orders for ready-made goods are usually filled the same day as received.

We urge you to carefully examine your order before mailing it to make sure that the measurements and sizes given are accurate, that the correct style numbers are mentioned, and that the order is complete in every detail. Be sure to read carefully the description of the garment you order.

7. Postage and Expressage Prepaid. We prepay postage and expressage to any part of the United States provided the full amount to pay for the desired goods accompanies the order; therefore, you need send us only the price of each article ordered, as we will prepay transportation charges no matter how large or how small your order. We do not pay express charges or return-money charges on goods shipped C. O. D.

8. Correspondence. Letters are answered by women of experience in matters of dress, and you can write us fully with the assurance that your communications will be handled by these experts who can appreciate your requirements. Do not hesitate to ask for any information in reference to our garments or methods which is not given in this Catalogue. Always date your letters and write the names of your Post Office, County and State distinctly.

Read the Questions and Answers on page 7. This may save you the trouble of writing us.

9. Always sign your name the same way. It is confusing to receive letters from the same person sometimes signed "Mrs. Wm. T. Smith," again "Ella M. Smith," and again "Mrs. E. M. Smith." Be careful to use the prefix "Miss" or "Mrs.," in every instance, and always sign your full name.

If you change your address while corresponding with us, please inform us promptly, mentioning both your old and new addresses.

10. Our Materials. We have the largest stock in New York of the most desirable imported and domestic materials for making suits, skirts and rain-coats to order. All our cloth fabrics are thoroughly sponged and shrunk by us, and every one is guaranteed. We do not handle anything we cannot recommend.

We cannot undertake to make garments from materials furnished by customers.

11. Special Samples. As our stock includes 400 different materials it is impracticable for us to send samples of the entire line; but if you do not find among those sent just what you wish, we will be glad to send others on request if you will specify exactly what you desire.

We cannot furnish samples of our ready-made goods such as Shirt-waists, Underwear, Suspenders, Petticoats, Dressing Sacques, Handkerchiefs, or Furs, but we will send samples of materials used in our Coats and Children's Dresses if desired.

12. Our Workmanship. Because we employ the most skillful cutters and tailors, men who have been trained to work under our exclusive system our workmanship is thorough and cannot be excelled.

Careful attention is paid to details. A point of prime importance in connection with our suits is the superior quality of canvas used in the jackets which prevents them from breaking down and losing their shape. We also make our light-fitting jackets with bust forms of fine quality haircloth to give them a shape which is both graceful and durable. The pressing, which means so much to the general appearance of the finished garment, is done by men of long experience, under the most approved methods.

13. Extra Large Garments. On account of the extra amount of material required, there will be an additional charge of 10 per cent. on the suits, jackets and rain-coats shown on pages 9 to 36, ordered with a bust measure of over 42 inches, and on separate skirts having a hip measure of over 48 inches.

If you order a separate jacket, the 10 per cent. should, of course, be calculated on the cost of the jacket only; but if you order a suit, the 10 per cent. must be figured on the price of the entire suit, because when your bust measure calls for an extra large jacket, it is necessary to make the skirt extra large in proportion.

14. Black and Mourning Garments. In ordering a black garment to be made to measure it is always advisable to mention whether it is to be lined and trimmed with black or not. When ordering a garment for mourning or second mourning wear, kindly state this fact distinctly, so that we may use the proper linings and trimmings.

15. Interlinings. We will interline the body of any made-to-measure jacket or coat, illustrated on pages 9 to 29, as far as the waist line, also the sleeves, for the following extra charges:

Interlining with Flannel.....	\$1.00
Interlining with "Silver Fleece".....	1.50
Interlining with genuine Chamois Skin.....	4.00

If you wish only the body of your jacket or coat interlined as far as the waist, exclusive of the sleeves, the additional charges will be:

Interlining with Flannel.....	\$.75
Interlining with "Silver Fleece".....	1.25
Interlining with genuine Chamois Skin.....	2.50

16. Linings for Long Coats. The long coats illustrated on page 36 can be lined in the body as far down as the hips, also the sleeves, with Satin for \$1.75 extra; with Taffeta Silk or Skinner's Satin for \$3.25 extra. We can line the entire coat with

Satin for \$3.50 extra; with Taffeta Silk or Skinner's Satin for \$6.00 extra.

17. Extra Long Jackets. For the prices quoted, the made-to-measure jackets shown on pages 9 to 29 can be made any length up to that mentioned in the description. If a jacket is wanted longer than stated in its description, there will be a reasonable charge for the extra length desired, as per schedule below:

If Jacket is to be made of			
Quality A cloth add 1¢	cents for each additional inch desired.		
" B "	17	" "	" "
" C "	20	" "	" "
" D "	22	" "	" "
" E "	25	" "	" "
" F "	27	" "	" "
" G "	30	" "	" "

(No charge can be made in the length of our ready-made coats.)

ANSWERS TO QUESTIONS YOU MAY WISH TO ASK.

Read carefully; it may save you the trouble of writing us.

QUESTION:—Will you guarantee to fit me?

ANSWER:—We positively will. For over nineteen years the energy, ability and experience of this establishment have been devoted to perfecting and improving our system of making garments to order from measurements sent by mail. If the directions on our measurement charts in the front of this Catalogue are carefully followed, the garment we make for you will be sure to fit you perfectly.

QUESTION:—In case you do not fit me, will you refund my money?

ANSWER:—Yes, we will refund it immediately and without argument. We will also pay the charges for returning the garment to us.

QUESTION:—In ordering a made-to-measure suit, may I select the jacket or waist of one of your styles and the skirt of another?

ANSWER:—Yes, if you order any of the styles shown on pages 9 to 36 of this Catalogue. The garments shown on those pages are made-to-order, and you are permitted to make any combinations that you desire. You will find full particulars in regard to combinations on page 8. Please remember that we cannot make changes of this kind, however, on our ready-made garments.

QUESTION:—Do you make special designs not illustrated by you?

ANSWER:—We do not.

QUESTION:—Do you employ agents?

ANSWER:—No agents whatever are employed by us. Anyone claiming to accept orders for us is a swindler and is endeavoring to obtain money under false pretenses. All orders should be mailed direct to us at 207 to 217 West 24th Street, New York City.

QUESTION:—Do you allow commissions or discounts?

ANSWER:—We do not. Our prices are so very reasonable that we can allow no reductions, regardless of the amount of goods ordered. Our garments are not sold to merchants to be resailed at a profit nor have we any branch stores.

QUESTION:—Do you sell your materials by the yard?

ANSWER:—Yes; a price list will be furnished on request.

QUESTION:—Do you deal in millinery or gloves?

ANSWER:—No; we handle only the goods shown in this Catalogue.

QUESTION:—Do you sell patterns?

ANSWER:—We do not sell patterns of any of our garments, nor those of any other make.

QUESTION:—Do you pay postage or express charges?

ANSWER:—We prepay postage and expressage to any part of the United States provided the full amount to pay for the desired goods accompanies the order; therefore, you need send us only the price of each article ordered, as we will prepay transportation charges no matter how large or how small your order. We do not pay express charges or return-money charges on goods shipped C. O. D.

QUESTION:—Do you make velvet or corduroy garments?

ANSWER:—We do not.

QUESTION:—Do you make riding habits?

ANSWER:—We do not make riding skirts, but we will make a coat like any of those we illustrate and sell you sufficient material for a skirt.

QUESTION:—Do you make skirts for maternity wear?

ANSWER:—We do; we make them with a draw-string or an elastic band, whichever is preferred. There is an extra charge of 50 cents for making a skirt in this way. Order blank should be plainly marked "Maternity Skirt."

QUESTION:—What length skirt is most popular in New York?

ANSWER:—The prevailing fashion in New York calls for a skirt length all around 2 inches from the ground.

INDEX.

ORDER BLANKS FOR MADE-TO-ORDER GARMENTS Pages 1 to 4
ORDER BLANKS FOR READY-MADE GOODS " 69 " 72

	PAGES
Coats (Ladies') Ready-Made.....	58 to 63
Coats (Misses) Ready-Made.....	64 and 65
Coats (Children's) Ready-Made.....	66 and 67
Corsets.....	37
Dresses (Children's) Ready-Made.....	68
FURS.....	55 to 57
Handkerchiefs.....	54
Kimonos and Dressing Sacques, Ready-Made.....	52 and 53
Petticoats, (Silk, Sateen, etc.) Ready-Made.....	51

	PAGES
Rain-coats, Made-to-Order.....	36
Shirt-Waists, Ready-Made.....	38 to 42
Suits (Tailor-Made) Made-to-Order.....	9 to 29
Suits (Shirt-Waist) Made-to-Order.....	30 and 31
Skirts, Made-to-Order.....	32 to 35
Sweaters, Ready-Made.....	43
Underwear (Muslin) Ready-Made.....	44 to 47
Underwear (Merino) Ready-Made.....	48 and 49
Underwear (Flannel) Ready-Made.....	50,

Instructions for ordering the MADE-TO-MEASURE GARMENTS

Illustrated on Pages 9 to 36.

1. **How to Order a Made-to-measure Garment.** First: make your selection from the styles shown on pages 9 to 36 of this Catalogue. Second: choose a material from any of our samples labelled Quality A, B, C, D, E, F and G. Third: have your measurements taken at home according to our simple instructions on the order Blank in the front of this Catalogue. Fourth: carefully fill out the Order Blank, enclose your remittance and mail them to us.

As we conduct a mail-order business, we receive orders by mail only.

2. **How to Select a Style.** Select from pages 9 to 36 the style of garment you prefer. Should you desire a skirt only, you are not limited to the separate skirts illustrated on pages 32 to 35, but you may select a skirt of any of the styles shown on pages 9 to 31, and we will make it separately. In ordering a suit you have the privilege of selecting the jacket of one style and the skirt of another. To learn the price of a suit consisting of two styles, add the price of the jacket selected to that of the skirt desired, as given under their descriptions.

3. **How to Select a Material.** Choose from our samples labelled Quality A, B, C, D, E, F and G, the material you like best and note the quality printed on the pin-ticket attached. You can ascertain the price of your garment when made of that quality by referring to the figures under its description in this Catalogue. If you do not find just what you desire among the samples sent, we will be glad to mail you an additional assortment on receipt of your request.

4. **How to Take Your Measurements for a Made-to-order Garment.** Turn to the Order Blank in the front of this Catalogue. The instructions printed thereon tell you exactly how your measurements can be taken by any one in your own home. It is not necessary to go to a dressmaker for this purpose. These instructions should be carefully read by you, as well as by the person who is to take your measurements. Remember, the measurements should be taken from your figure and not from an old garment. Use an accurate tape measure and do not make any allowance for seams. If you have any special instructions to give us as to how you wish your garment made or trimmed, or if there is

any peculiarity about your figure, write us fully on a separate sheet and enclose it with the order. Do not fail to securely pin or sew, in the spaces provided on our Order Blank, samples of the materials you select.

How to learn the cost of a Suit consisting of the Jacket of one of our styles and the Skirt of another.

In ordering a garment made-to-measure, you may combine the features of any of the styles shown on pages 9 to 36 of this Catalogue. That is, if you are pleased with the jacket of one style, but prefer the skirt of another, we will make the suit exactly as you wish, combining the styles selected.

The price of each jacket and skirt illustrated on pages 9 to 36 of this Catalogue is given separately under its description, and you can easily ascertain the cost of a suit consisting of the jacket of one style and the skirt of another, by adding the price of the jacket desired to that of the skirt you wish, in the same quality of material.

For example: If you wish a suit made of Quality A material to consist of a jacket like style No. 1048 with a skirt like style No. 1046 you can ascertain the price of the suit by adding the cost of the jacket and skirt as follows:

Jacket Style No. 1048	Quality A, \$10.00
Skirt Style No. 1046	Quality A, \$ 4.50
	Price of Suit complete, \$14.50

Should you wish a suit in Quality B material, with a jacket like style No. 1048 and the skirt like style No. 1046 the price would be figured as follows:

Jacket Style No. 1048	Quality B, \$10.50
Skirt Style No. 1046	Quality B, \$ 5.50
	Price of Suit complete, \$16.00

The price of all suits consisting of a jacket or waist of one style and skirt of another style must be figured according to these instructions.

Sleeves. If when ordering a made-to-measure garment, you do not fancy the sleeve shown with the style selected, we will substitute that of any other jacket or waist illustrated on pages 9 to 36 without extra charge, provided the sleeve you prefer does not require additional trimming.

DESCRIPTIONS OF GARMENTS ILLUSTRATED ON PAGE 9.

WE MAKE THESE GARMENTS TO ORDER ONLY—SAMPLES OF MATERIALS SENT FREE.

No. 1001 . . \$17.50 up

This charming street or calling costume embodies all the very latest ideas and will appeal to women of refined taste.

The **Jacket**, which is double-breasted, is tight-fitting both front and back, and manishly finished with lapped seams and tailor stitching. The chic, flat collar and elbow cuffs, which are handsomely completed with fancy garniture, may be inlaid with taffeta, peau de soie, satin or velvet in colors to harmonize with the material. Long sleeves may be had if desired without extra charge. Can be made in any length up to 32 inches in back for prices quoted below. If plain collar and cuffs are preferred, there will be a reduction of \$2.00.

The **Skirt** is cut generously full, and comprises nine gores with inverted plaits at each alternate gore, headed with ornamental straps of the material, which are trimmed with buttons.

*For prices quoted Jacket will be lined throughout with Good Satin; Skirt unlined.

Made of	Price of SUIT	Price of JACKET	Price of SKIRT
A cloth	\$17.50	\$12.00	\$ 6.00
B "	19.00	13.00	7.00
C "	21.50	14.00	8.00
D "	23.50	15.00	9.00
E "	25.50	16.00	10.25
F "	27.50	17.00	11.50
G "	29.50	18.00	12.75

No. 1002 . . \$12.50 up

The chic tailored appearance of this handsome Prince Chapeau suit places it among the season's most desirable styles.

The **Jacket** is semi-fitting with single-breasted front showing the new four-button effect. The stylish cuffs and the notched collar accord with the general tailored aspect. Can be made in any length up to 24 inches in back for prices quoted below.

The **Skirt** is constructed with thirteen gores stitched to a little below the hips from where the fulness falls in side-plaits. A fold of the material on the lower edge gives a stylish completion.

*For prices quoted Jacket will be lined throughout with Good Satin; Skirt unlined:

Made of	Price of SUIT	Price of JACKET	Price of SKIRT
A cloth	\$12.50	\$ 7.00	\$ 6.00
B "	14.00	7.75	7.00
C "	15.50	8.50	8.00
D "	17.50	9.25	9.25
E "	19.50	10.00	10.50
F "	21.50	10.75	12.00
G "	23.50	11.50	13.50

No. 1003 . . \$15.00 up

The long, graceful lines of this aristocratic model, bring out the good points of the figure, and the distinctive features stamp it at once as a new and exclusive design.

The **Jacket** is single-breasted in cutaway outline, and is tight-fitting both front and back. Notched velvet collar, jaunty turn-back cuffs of the material, lapped seams and stitching supply the correct tailor finish. Can be made in any length up to 32 inches in back for prices quoted below.

The **Skirt** is made with thirteen gores stitched to a short distance above the knees, and is side-plaited, exhibiting a box-plait down the center of the front. An original touch is supplied by the introduction of two folds of the material.

*For prices quoted Jacket will be lined throughout with Good Satin; Skirt unlined:

Made of	Price of SUIT	Price of JACKET	Price of SKIRT
A cloth	\$15.00	\$ 9.00	\$ 6.50
B "	17.00	10.00	7.50
C "	19.00	11.00	8.50
D "	21.00	12.00	9.50
E "	23.00	13.00	11.00
F "	25.00	14.00	12.50
G "	27.00	15.00	14.00

*Add \$3.00 to the above prices if taffeta silk or Skinner's satin is desired in Jacket 1001 or 1003; or \$1.75 if desired in Jacket 1002. We will make any of these Jackets and Skirts separately; see prices given under each description.



1001

1002

1003

For Prices and Descriptions of these Garments, See Page 8.



WE MAKE THESE GARMENTS TO ORDER ONLY—SAMPLES OF MATERIALS SENT FREE.

No. 1004 . . \$16.00 up

This beautiful design embodies the very latest ideas from Paris and its superior workmanship and distinguished appearance will elicit approbation.

The **Jacket** is tight-fitting both front and back, and single-breasted, with rounding cut-away edges, Gibson plaits being arranged on the shoulders and terminating under a belt. Lapped seams and a velvet notched collar are introduced, the sleeves adhering to the coat style. For prices quoted below, it can be made any length up to 32 inches in back.

The **Skirt** has seven gores, with three plaits at each seam stitched to above the knee from where the fullness depends.

*For prices quoted Jacket will be lined throughout with Good Satin; Skirt unlined:

Made of	Price of	Price of	Price of
QUALITY	SUIT	JACKET	SKIRT
A cloth	\$16.00	\$10.50	\$ 6 00
B "	18.00	11.50	7 00
C "	20.00	12.50	8 00
D "	22.00	13.50	9.25
E "	24.00	14.50	10.50
F "	26.00	15.50	12.00
G "	28.00	16.50	13.50

No. 1005 . . \$15.00 up

A tight-fitting jacket is invariably becoming, as its symmetrical lines give grace to the average figure. This modish tailor-made is in the height of style.

The **Jacket**, which can be made in any length up to 24 inches in back for prices quoted below, is decorated with straps of the same material, and the coat sleeves are trimmed with straps to correspond. The shawl collar may be had of silk, satin or velvet, edged with fancy braid.

The **Skirt** has ten gores with two box-plaits formed at the front, and eight side-plaits, confined to below the hip by stitching. The fullness hangs in graceful plaits.

*For prices quoted Jacket will be lined throughout with Good Satin; Skirt unlined:

Made of	Price of	Price of	Price of
QUALITY	SUIT	JACKET	SKIRT
A cloth	\$15.00	\$10.00	\$ 5.50
B "	16.50	10.50	6.50
C "	18.00	11.00	7.50
D "	20.00	11.75	8.75
E "	22.00	12.50	10.00
F "	24.00	13.25	11.50
G "	26.00	14.00	13.00

No. 1006 . . \$12.50 up

Prince Chap styles occupy an important place in fashionable designs; this youthful model depicts the newest conceits.

The **Coat** is on the single-breasted order, with cutaway edges, and is semi fitted both front and back in the characteristic way. Envelope patch pockets are applied for convenience on the jacket, which can be made in any length up to 24 inches in back for prices quoted below.

The **Skirt** includes nine gores stitched to a little below the hips, and falling in graceful side-plaits below. A fold of the material furnishes the decoration.

*For prices quoted Jacket will be lined throughout with Good Satin; Skirt unlined:

Made of	Price of	Price of	Price of
QUALITY	SUIT	JACKET	SKIRT
A cloth	\$12.50	\$ 7.50	\$ 5.50
B "	14.00	8.25	6.50
C "	15.50	9.00	7.50
D "	17.50	9.75	8.75
E "	19.50	10.50	10.00
F "	21.50	11.25	11.50
G "	23.50	12.00	13.00

*Add \$7.75 to the above prices if taffeta silk or Skinner's satin lining is desired in Jackets 1005 and 1006; or \$2.75 if desired in Jacket 1004. We will make any of these Jackets and Skirts separately; see prices given under each description.



WE MAKE THESE GARMENTS TO ORDER ONLY—SAMPLES OF MATERIALS SENT FREE.

No. 1007 . . \$15.00 up

A fancy collar device distinguishes this attractive tailor-made, and as a stylish garment for street and dressy occasions, it offers many advantages.

The **Jacket**, which is single-breasted, is semi-fitted in front where cutaway edges are adopted, and also at the back, which can be made in any length up to 24 inches for prices quoted below; seams are lapped. The collar can be inlaid with silk, satin or velvet, edged with fancy braid.

The **Skirt** is a favorite model, being stitched to above the knee, and inverted plaits and box-plaits add graceful fullness.

*For prices quoted Jacket will be lined throughout with Good Satin; Skirt unlined.

MADE OF	PRICE OF JACKET	PRICE OF SKIRT
A cloth	\$ 9.50	\$ 6.00
B "	10.00	7.00
C "	10.50	8.00
D "	11.25	9.25
E "	12.00	10.75
F "	12.75	12.25
G "	13.50	13.75

No. 1008 . . \$14.50 up

Plaits of the material are utilized in the decorative treatment of this chic suit, which embodies the latest ideas in its shaping.

The **Jacket** displays a tight-fitting back and half loose-fitting front. Plaits contribute a stylish effect in front, and also on the back, which can be made in any length up to 24 inches for prices quoted below. The coat sleeves are trimmed with straps of the material, and a notched collar gives the correct tailor finish.

The **Skirt** is seven gored, with two plaits arranged at each seam, stitched in place to above the knee. A fold of the material furnishes the decoration.

*For prices quoted Jacket will be lined throughout with Good Satin; Skirt unlined.

MADE OF	PRICE OF JACKET	PRICE OF SKIRT
A cloth	\$ 9.25	\$ 5.75
B "	10.00	6.75
C "	11.50	7.75
D "	12.50	9.00
E "	13.50	10.25
F "	14.50	11.75
G "	15.50	13.25

No. 1009 . . \$19.50 up

This handsome costume, which includes the new and fashionable Redingote, is one of our most attractive models in stylish apparel.

The **Coat** is single-breasted and is tight-fitting both back and front, trimmed with plaits and straps of the material. A vest effect of silk, satin or velvet, edged with fancy garniture is employed, topped by a collar to match, trimmed with braid. Narrow braid edges the full length straps on front. For prices quoted below, coat can be made in any length up to 40 inches in back.

The **Skirt** is of the nine gored variety, stitched to the knee in side plaited effect from where the fullness is gracefully adjusted.

*For prices quoted Jacket will be lined throughout with Good Satin; Skirt unlined.

MADE OF	PRICE OF JACKET	PRICE OF SKIRT
A cloth	\$19.50	\$15.50
B "	21.50	16.50
C "	23.50	17.50
D "	25.50	18.50
E "	27.50	19.50
F "	30.00	21.00
G "	33.00	22.50

*Add \$1.75 to the above prices if taffeta silk or Skinner's satin lining is desired in Jackets 1007 and 1008; or \$3.75 if desired in Jacket 1009. You may select the Jacket of one style and the Skirt of another; see Page 8 for particulars as to prices.



WE MAKE THE SUITS SHOWN ON THIS PAGE TO ORDER
ONLY—SAMPLES OF MATERIALS SENT FREE.

No. 1010 . . \$14.50 up

The stylish features of this handsome tailored suit commend it to those who desire an all-round nobby street attire, which embraces the newest conceits in fashions.

The **Jacket**, which closes in double-breasted effect with buttons, can be made in any length up to 30 inches in the back for prices quoted below. It is semi-fitted both front and back, with lapped seams. A velvet notched collar gives a stylish completion.

The **Skirt** exhibits thirteen gores which are stitched in place to above the knee and deep plaits are formed below.

*For prices quoted Jacket will be lined throughout with Good Satin; Skirt unlined;

Made of	Price of	Price of	Price of
QUALITY	SUIT	JACKET	SKIRT
A cloth	\$14.50	\$ 9.50	\$ 5.50
B "	16.00	10.00	6.50
C "	17.50	10.75	7.50
D "	19.50	11.50	8.75
E "	21.50	12.25	10.00
F "	23.50	13.00	11.50
G "	25.50	13.75	13.00

No. 1011 . . \$10.00 up

For practical use a costume of this order cannot be surpassed, as it combines durability with style, and is finely tailored.

The **Jacket** is half loose-fitting in front where a double-breasted closing is obtained, and the back, which is tight-fitting, can be made any length up to 24 inches for prices quoted below. Masculine items include a notched collar and flap pockets, and the sleeves are of the conventional coat type.

The **Skirt** is made with seven gores and is stitched to about the knee, below which the usual side-plaits are formed.

*For prices quoted Jacket will be lined throughout with Good Satin; Skirt unlined;

Made of	Price of	Price of	Price of
QUALITY	SUIT	JACKET	SKIRT
A cloth	\$10.00	\$ 6.00	\$ 4.50
B "	11.50	6.50	5.50
C "	13.00	7.00	6.50
D "	15.00	8.00	7.50
E "	17.00	9.00	8.75
F "	19.00	10.00	10.00
G "	21.00	11.00	11.25

No. 1012 . . \$16.00 up

Cutaway models belong to the most exclusive standards, and this beautiful example of prevailing fashions offers innumerable inducements for street or visiting wear.

The **Jacket** displays a half tight-fitting double-breasted front. Straps of the material provide the attractive decoration, appearing also on the tight-fitting back, which can be made any length up to 27 inches for prices quoted below. Fancy garniture gives a stylish touch to the collarless neck.

The **Skirt** has seven gores with three plaits disposed at each seam, stitched to a short distance below the hips.

*For prices quoted Jacket will be lined throughout with Good Satin; Skirt unlined;

Made of	Price of	Price of	Price of
QUALITY	SUIT	JACKET	SKIRT
A cloth	\$16.00	\$10.50	\$ 8.00
B "	18.00	11.50	7.00
C "	20.00	12.50	8.00
D "	22.00	13.50	9.25
E "	24.00	14.50	10.50
F "	26.00	15.50	12.00
G "	28.00	16.50	13.50

*Add \$2.50 to the above prices if taffeta silk or Skinner's satin lining is desired in Jacket 1010; add \$1.75 if desired in Jacket 1011, or \$2.00 if desired in Jacket 1012. We will make any of these Jackets and Skirts separately; see prices given under each description.



WE MAKE THE SUITS SHOWN ON THIS PAGE TO ORDER
ONLY—SAMPLES OF MATERIALS SENT FREE.

No. 1013 . . \$13.00 up

A smart tailor-made like the model shown here, is what every woman desires, for a suit of this kind is undoubtedly the most useful in the wardrobe.

The **Jacket** conforms to the double-breasted outline, and lapped seams ornament the half tight-fitting front and back. The notched collar can be inlaid with silk or satin, decorated with narrow braid, which similarly edges the turn-back cloth cuffs. For the prices quoted below, it can be made any length in back up to 24 inches.

The **Skirt** consists of seven gores arranged in side-plaits that are stitched to above the knee, and from there fall in deep plaits.

*For prices quoted Jacket will be lined throughout with Good Satin; Skirt unlined:

MADE OF	Price of	Price of	Price of
QUALITY	SUIT	JACKET	SKIRT
A cloth	\$13.00	\$ 9.00	\$ 4.50
B "	14.50	9.50	5.50
C "	16.00	10.25	6.50
D "	17.50	11.00	7.60
E "	19.50	11.75	8.75
F "	21.50	12.50	10.00
G "	23.50	13.25	11.25

No. 1014 . . \$12.50 up

This handsome suit is one of the most popular styles of the season, offering all the necessary essentials for fashionable wear.

The **Jacket** is half loose-fitting in front, where a double-breasted closing is made with buttons and buttonholes. Lapped seams are employed, appearing also on the tight-fitting back which can be made any length up to 24 inches for prices quoted below. A notched collar adds to the tailored effect.

The **Skirt** includes five gores that are disposed in three plaits at each seam, and stitched to a little above the knee, the fashionable flare being obtained with plaits.

*For prices quoted Jacket will be lined throughout with Good Satin; Skirt unlined:

MADE OF	Price of	Price of	Price of
QUALITY	SUIT	JACKET	SKIRT
A cloth	\$12.50	\$ 8.00	\$ 5.00
B "	14.00	8.50	6.00
C "	15.50	9.00	7.00
D "	17.50	9.75	8.25
E "	19.50	10.50	9.50
F "	21.50	11.25	11.00
G "	23.50	12.00	12.50

No. 1015 . . \$15.00 up

A charming adaptation of the chic Prince Chap design is illustrated here, and its superior appearance will attract attention wherever it is worn.

The **Jacket** is made with the favorite four-button single-breasted closing and is semi-fitted both front and back, with lapped seams furnishing a neat tailor finish. The uniquely shaped collar and turn-back cuffs are trimmed with braid. For prices quoted below the jacket can be made any length in back up to 27 inches.

The **Skirt** comprises nine gores, with box-plaits alternated by inverted plaits that are headed by panels and VanDyck straps produce the decoration.

*For prices quoted Jacket will be lined throughout with Good Satin; Skirt unlined:

MADE OF	Price of	Price of	Price of
QUALITY	SUIT	JACKET	SKIRT
A cloth	\$15.00	\$ 9.50	\$ 6.00
B "	16.50	10.00	7.00
C "	18.00	10.50	8.00
D "	20.00	11.25	9.25
E "	22.00	12.00	10.50
F "	24.00	12.75	12.00
G "	26.00	13.50	13.25

*Add \$1.75 to the above prices if taffeta silk or Skinner's satin lining is desired in Jacket 1013 or 1014; add \$2.00 if desired in Jacket 1015. You may select the Jacket of one style and the Skirt of another; see page 8 for particulars as to prices.



WE MAKE THESE GARMENTS TO ORDER ONLY—SAMPLES OF MATERIALS SENT FREE.

No. 1016 . . \$15.00 up

Fancy garniture is used on the neck of this handsome model as the required touch of color, and as an all-round suit for general wear, it will prove most desirable.

The **Jacket** is double-breasted and displays a half loose-fitting front and a tight-fitting back that can be made any length up to 24 inches for prices quoted below. The seams are lapped, and the fancy garniture on the neck adds to the handsome appearance.

The **Skirt** comprises seven gores, and three plaits are formed at each seam, stitched to a little above the knee, with graceful plaits hanging below.

*For prices quoted Jacket will be lined throughout with Good Satin; Skirt unlined;

Made of	Price of	Price of	Price of
QUALITY	SUIT	JACKET	SKIRT
A cloth	\$15.00	\$ 9.50	\$ 6.00
B "	16.50	10.00	7.00
C "	18.00	10.50	8.00
D "	20.00	11.25	9.25
E "	22.00	12.00	10.50
F "	24.00	12.75	12.00
G "	26.00	13.50	13.50

No. 1017 . . \$18.00 up

Blouse designs retain their popularity, and this admirable example offers a delightful change from the more stereotyped styles.

The **Blouse** displays a double-breasted front that is tucked to accord with the tight-fitting back, and a belt conceals the joining of the peplum. The cuffs and collar may be made of silk or satin, decorated with garniture and soutache braid; long sleeves may be had if desired without extra charge. For prices quoted below Jacket can be made in any length in back up to 21 inches.

The **Skirt** has thirteen gores, stitched to above the knee, the lower edge being ornamented with two folds of the material.

*For prices quoted Jacket will be lined throughout with Good Satin; Skirt unlined;

Made of	Price of	Price of	Price of
QUALITY	SUIT	JACKET	SKIRT
A cloth	\$18.00	\$12.00	\$ 6.50
B "	19.50	12.50	7.50
C "	21.00	13.25	8.50
D "	23.00	14.00	9.75
E "	25.00	14.75	11.00
F "	27.00	15.50	12.50
G "	29.00	16.25	14.00

No. 1018 . . \$14.50 up

Tabs add an ornamental effect to this natty tailor costume, and its faultless lines and superb finish make it an attractive selection.

The **Jacket**, which can be made any length in back up to 24 inches for prices quoted below, displays a single-breasted, half loose-fitting front that fastens with a fly, and a tight-fitting back. Tabs and straps of the material furnish the elaboration, and the unique cuffs and notched collar of the same material emphasize the tailored effect.

The **Skirt** includes ten gores with four side-plaits arranged on each side, and two box-plaits ornament the front.

*For prices quoted Jacket will be lined throughout with Good Satin; Skirt unlined;

Made of	Price of	Price of	Price of
QUALITY	SUIT	JACKET	SKIRT
A cloth	\$14.50	\$ 9.50	\$ 5.50
B "	16.00	10.00	6.50
C "	17.50	10.50	7.50
D "	19.00	11.25	8.50
E "	21.00	12.00	10.00
F "	23.00	12.75	11.50
G "	25.00	13.50	13.00

*Add \$1.75 to the above prices if taffeta silk or Skinner's satin lining is desired in any of these Jackets. We will make any of these Jackets and Skirts separately; see prices given under each description.



WE MAKE THESE GARMENTS TO ORDER ONLY—SAMPLES OF MATERIALS SENT FREE.

No. 1019 . . \$18.00 up

No. 1020 . . \$17.00 up

No. 1021 . . \$12.50 up

The woman who wishes to be smartly gowned will find that this attractive design responds to the most exacting demands.

The **Jacket** is tight-fitting with a vest of fancy garniture arranged in front. The embellishing touches are supplied in buttons and loops with straps of the same material. Silk or satin edged with braid may be used for the collar, and for prices quoted below the Coat can be made any length in back up to 21 inches.

The **Skirt** consists of eleven gores, with box-plaits separated by panels formed above clusters of inverted plaits, and the bottom is finished with straps of the material.

*For prices quoted Jacket will be lined throughout with Good Satin ; Skirt unlined:

Made of	Price of	Price of	Price of
QUALITY	SUIT	JACKET	SKIRT
A cloth	\$18.00	\$11.75	\$ 6.75
B "	19.50	12.25	7.75
C "	21.00	13.00	9.00
D "	23.50	13.75	10.50
E "	25.50	14.50	12.00
F "	27.50	15.25	13.50
G "	29.50	16.00	15.00

The superb lines of this beautifully tailored suit will attract the admiration of the most critical, and for fashionable street wear it meets every requirement.

The **Jacket** is tight-fitting in front, where a regular single-breasted closing is made, and the tight-fitting back can be made any length up to 36 inches for prices quoted below. Lapped seams and buttons give a mannish finish, and the notched collar is faced with velvet.

The **Skirt** has seven gores with three plaits formed at each seam, which are stitched to below the hips, and plaits characterize the lower edge.

*For prices quoted Jacket will be lined throughout with Good Satin ; Skirt unlined:

Made of	Price of	Price of	Price of
QUALITY	SUIT	JACKET	SKIRT
A cloth	\$17.00	\$11.50	\$ 6.00
B "	19.00	12.50	7.00
C "	21.00	13.50	8.00
D "	23.00	14.50	9.25
E "	25.00	15.50	10.50
F "	27.00	16.50	12.00
G "	29.00	17.50	13.50

The simplicity of this modish construction commends it, and as its shaping is in accordance with the latest styles it can be worn appropriately upon almost any occasion.

The **Jacket** closes with a fly, the half loose-fitting front being ornamented with lapped seams to harmonize with the tight-fitting back, which can be made any length up to 24 inches for prices quoted below. A velvet inlay supplies a dressy air to the collar, and coat sleeves are adapted.

The **Skirt** displays nine gores that are side-plaited and stitched to a short distance above the knee.

*For prices quoted Jacket will be lined throughout with Good Satin ; Skirt unlined:

Made of	Price of	Price of	Price of
QUALITY	SUIT	JACKET	SKIRT
A cloth	\$12.50	\$ 8.00	\$ 5.00
B "	14.00	8.50	6.00
C "	15.50	9.00	7.00
D "	17.00	9.50	8.25
E "	19.00	10.25	9.50
F "	21.00	11.00	11.00
G "	23.00	11.75	12.50

*Add \$1.75 to the above prices if taffeta silk or Skinner's satin lining is desired in Jacket 1019 or 1021; or \$3.50 if desired in Jacket 1020. You may select the Jacket of one style and the Skirt of another; see page 8 for particulars as to prices.



WE MAKE THESE GARMENTS TO ORDER.
SAMPLES OF MATERIALS SENT FREE.

No. 1022 . . \$12.50 up

A well-made tailored suit may be worn repeatedly, yet retain its faultless lines, and this beautiful example of recent fashions will respond to every requirement of durability and style.

The **Jacket** is double-breasted with semi-fitted front to accord with the back, where it can be made any length up to 24 inches for prices quoted below. The seams are lapped, and a notched collar and upright pocket flaps are neat accessories.

The **Skirt** comprises seven gores with two plaits at each seam which are stitched to a little above the knee, and depend in graceful plaits below.

*For prices quoted Jacket will be lined throughout with Good Satin; Skirt unlined:

Made of	Price of	Price of	Price of
QUALITY	SUIT	JACKET	SKIRT
A cloth	\$12.50	\$ 7.50	\$ 5.50
B "	14.00	8.00	6.50
C "	15.50	8.50	7.50
D "	17.50	9.25	8.75
E "	19.50	10.00	10.00
F "	21.50	10.75	11.50
G "	23.50	11.50	13.00

No. 1023 . . \$15.00 up

This beautiful example of current fashions elicits admiration from all who see it, and it is one of our most tasteful and superior models for general wear.

The **Jacket** is tight-fitting in front, and also in back, which can be made any length up to 36 inches for prices quoted below. Lapped seams are employed. Oblique pockets adorn the single-breasted front, and the collar and cuffs are of the same material.

The **Skirt** exhibits nine gores, side-plaited, and stitched to about the knee; plaits hang gracefully below, and a fold of the material supplies the decoration.

*For prices quoted Jacket will be lined throughout with Good Satin; Skirt unlined:

Made of	Price of	Price of	Price of
QUALITY	SUIT	JACKET	SKIRT
A cloth	\$15.00	\$10.00	\$ 5.50
B "	17.00	11.00	6.50
C "	19.00	12.00	7.50
D "	21.00	13.00	8.75
E "	23.00	14.00	10.00
F "	25.00	15.00	11.50
G "	27.00	16.00	13.00

No. 1024 . . \$14.50 up

A unique collar device stamps this suit as one of the latest models, and it is a desirable acquisition from every standpoint.

The **Jacket** is single-breasted with a tight-fitting back that can be made any length up to 24 inches for prices quoted below. The half tight-fitting front closes with buttons, the edges being in cutaway outline. Lapped seams and oblique pockets are chic features, and braid ornaments the collar.

The **Skirt** is shaped with nine gores that form box-plaits, alternated by pointed panels, below which inverted plaits are inserted. Straps of the material furnish the garniture.

*For prices quoted Jacket will be lined throughout with Good Satin; Skirt unlined:

Made of	Price of	Price of	Price of
QUALITY	SUIT	JACKET	SKIRT
A cloth	\$14.50	\$ 8.50	\$ 6.50
B "	16.00	9.00	7.50
C "	17.75	9.50	8.75
D "	19.50	10.25	10.00
E "	21.50	11.00	11.50
F "	23.50	11.75	13.00
G "	25.50	12.50	14.50

*Add \$r. 75 to the above prices if taffeta silk or Skinner's satin lining is desired in Jacket 1022 or 1024; or \$3.50 if desired in Jacket 1023. We will make any of these Jackets and Skirts separately; see prices given under each description.



WE MAKE THESE GARMENTS TO ORDER.
SAMPLES OF MATERIALS SENT FREE.

No. 1025 . . \$11.00 up

A fly closing characterizes this neat street costume, which shows in every detail its adherence to the most exclusive fashions.

The **Jacket** is semi-fitted in front, where a single-breasted closing is made, and lapped seams are introduced, appearing also on the tight-fitting back, which can be made any length up to 24 inches for prices quoted below. A notched collar is employed at the neck.

The **Skirt** includes nine gores, side-plaits, and stitched to about the knee, with plaits falling below.

*For prices quoted Jacket will be lined throughout with Good Satin; Skirt unlined:

Made of	Price of	Price of	Price of
QUALITY	SUIT	JACKET	SKIRT
A cloth	\$11.00	\$ 6.50	\$ 5.00
B "	12.50	7.00	6.00
C "	14.00	7.75	7.00
D "	16.00	8.50	8.25
E "	18.00	9.25	9.50
F "	20.00	10.25	11.00
G "	22.00	11.25	12.50

No. 1026 . . \$12.50 up

The charm of the mannish cutaway designs is cleverly emphasized in this fashionable costume, the many attractive features of which will be readily appreciated.

The **Jacket** is shaped in half loose-fitting effect in front, where a button closing shows below the notched collar, and the tight-fitting back can be made any length up to 24 inches for prices quoted below. Lapped seams give a tailor completion, and the usual pockets are displayed.

The **Skirt** has ten gores, with four side-plaits at each side and two box-plaits in front, which are stitched to about the knee.

*For prices quoted Jacket will be lined throughout with Good Satin; Skirt unlined:

Made of	Price of	Price of	Price of
QUALITY	SUIT	JACKET	SKIRT
A cloth	\$12.50	\$ 7.50	\$ 5.50
B "	14.00	8.25	6.50
C "	15.50	9.00	7.50
D "	17.50	9.75	8.50
E "	19.50	10.50	10.00
F "	21.50	11.25	11.50
G "	23.50	12.00	13.00

No. 1027 . . \$15.00 up

This handsome design will be found eminently stylish for traveling, or for serviceable street adoption, as it combines durability with fashion throughout.

The **Jacket** is double-breasted, and half tight-fitting in front where straps of the material are applied. The back, which is tight-fitting, is similarly trimmed, and can be made any length up to 27 inches for prices quoted below. A notched collar and mannish turn-back cuffs add to the natty effect.

The **Skirt** comprises seven gores, with three plaits at each seam, stitched to about the knee, and falling in deep plaits below. A fold of the material trims the lower edge.

*For prices quoted Jacket will be lined throughout with Good Satin; Skirt unlined:

Made of	Price of	Price of	Price of
QUALITY	SUIT	JACKET	SKIRT
A cloth	\$15.00	\$ 8.75	\$ 6.75
B "	17.00	9.75	7.75
C "	19.00	10.75	8.75
D "	21.00	11.75	10.00
E "	23.00	12.75	11.25
F "	25.00	13.75	12.75
G "	27.00	14.75	14.25

*Add \$1.75 to the above prices if tulle silk or Skinner's satin lining is desired in Jacket 1025 or 1026; or \$2.00 if desired in Jacket 1027. You may select the Jacket of one style and the Skirt of another; see page 8 for particulars as to prices.



WE MAKE THESE GARMENTS TO ORDER ONLY—SAMPLES OF MATERIALS SENT FREE.

No. 1028 . . \$16.00 up

Sleeve caps are employed upon this handsome creation, which will appeal to any one desiring a particularly stylish costume.

The **Jacket**, which is half loose-fitting in front and tight-fitting in back, is distinguished by braid trimmed caps over the shoulders; straps of the material trimmed with braid extend down front, and also the back, which can be made any length up to 27 inches for prices quoted below. The notched collar and the sleeves are stitched.

The **Skirt** has thirteen gores, stitched to a short distance above the knee, with side-plaits arranged below. Two folds of the material embellish the lower edge.

*For prices quoted Jacket will be lined throughout with Good Satin; Skirt unlined:

	Made of	Price of SUIT	Price of JACKET	Price of SKIRT
A	cloth	\$16.00	\$10.50	\$ 6.50
B	"	18.00	11.50	7.50
C	"	20.00	12.50	8.50
D	"	22.00	13.50	9.50
E	"	24.00	14.50	11.00
F	"	26.50	15.50	12.50
G	"	29.00	16.50	14.00

No. 1029 . . \$11.50 up

The simple elegance of this youthful model has caused it to be received with instantaneous favor, and for smart street service or general wear it cannot be excelled.

The **Jacket** displays a single-breasted fly front, and a tight-fitting back, which can be made any length up to 24 inches for prices quoted below. The natty appearance is enhanced by the introduction of lapped seams, and the neck is stylishly completed with fancy braid.

The **Skirt** is smoothly fitted over the hips in the approved manner and consists of seven gores stitched to slightly above the knee, side-plaits being formed below.

*For prices quoted Jacket will be lined throughout with Good Satin; Skirt unlined:

	Made of	Price of SUIT	Price of JACKET	Price of SKIRT
A	cloth	\$11.50	\$ 7.50	\$ 4.50
B	"	13.00	8.00	5.50
C	"	14.50	8.50	6.50
D	"	16.50	9.25	7.75
E	"	18.50	10.00	9.00
F	"	20.50	11.00	10.25
G	"	22.50	12.00	11.75

No. 1030 . . \$13.00 up

An extremely attractive effect is obtained with tailor braid and straps of the material on this chic design, which is faultless in style and finish.

The **Jacket**, which is single-breasted, is semi-fitted both front and back and closes with a fly. Straps of the material are employed on the front and also in back, which can be made any length up to 24 inches for prices quoted below. Tailor braid edges the collar, front and bottom of the jacket, and also trims the cuffs.

The **Skirt**, which consists of seven gores, is side-plaited and stitched to a little above the knee, falling in deep plaits below.

*For prices quoted Jacket will be lined throughout with Good Satin; Skirt unlined:

	Made of	Price of SUIT	Price of JACKET	Price of SKIRT
A	cloth	\$13.00	\$ 9.00	\$ 4.50
B	"	14.50	9.50	5.50
C	"	16.00	10.00	6.50
D	"	18.00	10.75	7.75
E	"	20.00	11.50	9.00
F	"	22.00	12.50	10.25
G	"	24.00	13.50	11.75

*Add \$1.75 to the above prices if taffeta silk or Skinner's satin lining is desired in Jacket 1029 or 1030; or \$2.00 if desired in Jacket 1028. We will make any of these Jackets and Skirts separately; see prices given under each description.



WE MAKE THESE GARMENTS TO ORDER ONLY—SAMPLES OF MATERIALS SENT FREE.

No. 1031 . . \$14.50 up

This nobly walking suit exhibits the newest conceits in its shaping, and it is one of the most correct tailor-mades now worn.

The **Coat** is semi-fitted in front, where a single-breasted closing is visibly made, and the back which can be made any length up to 32 inches for prices quoted below, is also semi-fitted, with the characteristic coat laps. A velvet inlaid collar and flap pockets contribute to the effect, the cuffs being of the material.

The **Skirt** has nine gores, in side-plaited outline, and stitched to the knee, where plaits flare out below.

*For prices quoted Jacket will be lined throughout with Good Satin; Skirt unlined:

QUALITY	Price of		Price of
	SUIT	JACKET	
A cloth	\$14.50	\$10.00	\$ 5.00
B "	16.00	10.75	6.00
C "	18.00	11.50	7.00
D "	20.00	12.75	8.25
E "	22.00	13.75	9.50
F "	24.00	14.75	11.00
G "	26.00	15.75	12.50

No. 1032 . . \$12.50 up

A pleasing adaptation of the popular Prince Chap models is presented here, and the new cutaway edges are displayed on the fronts.

The **Jacket** exhibits a tight-fitting back and half loose-fitting fronts that are closed with buttons; the neck is completed with a collar trimmed with braid and ornamented with buttons. For prices quoted below, the Jacket can be made any length up to 24 inches in back.

The **Skirt** includes eight gores with two box-plaits arranged in front, and three side-plaits at the side, stitched in place to the knee.

*For prices quoted Jacket will be lined throughout with Good Satin; Skirt unlined:

QUALITY	Price of		Price of
	SUIT	JACKET	
A cloth	\$12.50	\$ 8.00	\$ 5.00
B "	14.00	8.50	6.00
C "	15.50	9.00	7.00
D "	17.00	9.75	8.25
E "	19.00	10.50	9.50
F "	21.00	11.25	11.00
G "	23.00	12.00	12.50

No. 1033 . . \$10.00 up

Tight-fitting models are extremely popular in New York at present, and are particularly becoming to women of good figures. This design is one of the prevailing standards.

The **Jacket**, which for prices quoted below can be made any length up to 22 inches at the back, is tight-fitting, with a notched collar applied above the single-breasted closing, which is made visible. Cuffs of the material are fashionable accessories, and lapped seams provide the tailor finish.

The **Skirt** has seven gores that are stitched in side-plaits to above the knee, the fulness falling in deep plaits below.

*For prices quoted Jacket will be lined throughout with Good Satin; Skirt unlined:

QUALITY	Price of		Price of
	SUIT	JACKET	
A cloth	\$10.00	\$6.00	\$ 4.50
B "	11.50	6.50	5.50
C "	13.00	7.00	6.50
D "	15.00	7.75	7.75
E "	17.00	8.50	9.00
F "	19.00	9.25	10.25
G "	21.00	10.00	11.75

*Add \$1.75 to the above prices if taffeta silk or Skinner's satin lining is desired in Jacket 1032 or 1033; or \$3.00 if desired in Jacket 1031. You may select the Jacket of one style and the Skirt of another; see page 8 for particulars as to prices.



WE MAKE THESE GARMENTS TO ORDER ONLY—SAMPLES OF MATERIALS SENT FREE.

No. 1034 . . \$16.00 up

A charming costume is presented here, and for exclusive street wear it has few equals.

The **Jacket**, which is single-breasted and half loose-fitting in front, closes under a fly, and the tight-fitting back can be made in any length up to 24 inches for the prices quoted below. Straps of the same material in conjunction with plaits furnish the embellishing features, and inlays are added of silk or satin.

The **Skirt** includes eleven gores, with each alternate gore consisting of pointed panels lengthened by inverted plaits. The desired flare is produced by box and side-plaits.

*For prices quoted Jacket will be lined throughout with Good Satin; Skirt unlined:

Made of	Price of	Price of	Price of
QUALITY	SUIT	JACKET	SKIRT
A cloth	\$16.00	\$10.25	\$ 6.25
B "	17.50	10.75	7.25
C "	19.00	11.25	8.50
D "	21.00	12.00	9.75
E "	23.00	12.75	11.00
F "	25.00	13.50	12.50
G "	27.00	14.25	14.00

No. 1035 . . \$17.50 up

The symmetrical lines of this beautiful model give grace and slenderness to the wearer, and it is a great favorite this season.

The **Jacket**, which can be made in any length up to 30 inches in the back for the prices quoted below, is tight-fitting, with rounding cutaway edges in front. Lapped seams with tailor stitching provide the finish. The vest device can be made of silk, satin or velvet, decorated with garniture.

The **Skirt** has seven gores with three plaits at each seam stitched to above the knee, where side-plaits are formed. Two folds of the material decorate the lower edge.

*For prices quoted Jacket will be lined throughout with Good Satin; Skirt unlined:

Made of	Price of	Price of	Price of
QUALITY	SUIT	JACKET	SKIRT
A cloth	\$17.50	\$11.50	\$ 6.50
B "	19.50	12.25	7.75
C "	21.50	13.00	9.00
D "	23.50	13.75	10.25
E "	25.50	14.50	11.50
F "	27.50	15.25	13.00
G "	29.50	16.00	14.50

No. 1036 . . \$14.50 up

The original charm of the youthful Prince Chap styles is preserved throughout in this handsome tailor-made suit.

The **Jacket** is double-breasted, with a visible button closing, and in semi-fitted effect in front and also at the back, which can be made in any length up to 27 inches for the prices quoted below. A velvet inlay decorates the notched collar and flaps conceal the mannish pockets.

The **Skirt** consists of nine gores disposed in side-plaits, stitched to a slight distance above the knee, and two folds of the material supply the trimming at the bottom.

*For prices quoted Jacket will be lined throughout with Good Satin; Skirt unlined:

Made of	Price of	Price of	Price of
QUALITY	SUIT	JACKET	SKIRT
A cloth	\$14.50	\$ 9.00	\$ 6.00
B "	16.25	9.75	7.00
C "	18.00	10.50	8.00
D "	20.00	11.25	9.50
E "	22.00	12.00	11.00
F "	24.00	12.75	12.50
G "	26.00	13.50	14.00

*Add \$1.75 to the above prices if taffeta silk or Skinner's satin lining is desired in Jacket 1034; add \$2.50 if desired in Jacket 1035; or \$2.00 if desired in Jacket 1036. We will make any of these Jackets and Skirts separately; see prices given under each description.



WE MAKE THESE GARMENTS TO ORDER ONLY—SAMPLES OF MATERIALS SENT FREE.

No. 1037 . . \$16.00 up

Tailor braid is effectively introduced on this attractive street suit, which is faultlessly tailored in accordance with the prevailing requirements.

The **Jacket** is tight-fitting, with a single-breasted closing, and lapped seams are employed for a decorative finish. The notched collar, cuffs and edges are bound with braid, and coat-laps finish the model at the back, where for prices quoted below, it can be made in any length up to 30 inches.

The **Skirt** is nine gored, with box-plaits stitched to above the knee; two folds of the material furnish the ornamentation.

*For prices quoted Jacket will be lined throughout with Good Satin; Skirt unlined.

Made of	Price of	Price of	Price of
QUALITY	SUIT	JACKET	SKIRT
A cloth	\$16.00	\$10.00	\$ 6.50
B "	17.50	10.50	7.50
C "	19.00	11.00	8.50
D "	21.00	11.75	9.75
E "	23.00	12.50	11.25
F "	25.00	13.25	12.75
G "	27.00	14.00	14.50

No. 1038 . . \$15.00 up

The woman of refined taste will at once appreciate the beauty of this superbly finished tailor suit, and enormous popularity is prophesied for it.

The **Jacket** is tight-fitting both front and back, and is trimmed with plaits; it can be made in any length at the back up to 27 inches for prices quoted below. The closing is single-breasted with cutaway edges, and odd pockets are employed.

The **Skirt** adheres to the eleven gored shaping, with short, pointed panels lengthened by inverted plaits, and each alternate gore is formed into a full length box-plait.

*For prices quoted Jacket will be lined throughout with Good Satin; Skirt unlined.

Made of	Price of	Price of	Price of
QUALITY	SUIT	JACKET	SKIRT
A cloth	\$15.00	\$ 9.50	\$ 6.00
B "	17.00	10.50	7.00
C "	19.00	11.50	8.00
D "	21.00	12.50	9.25
E "	23.00	13.00	10.50
F "	25.00	14.50	12.00
G "	27.00	15.50	13.50

No. 1039 . . \$14.00 up

A smart street suit is a desirable possession, and this chic conception will appeal to every woman who wishes an unobtrusive costume.

The **Jacket** is single-breasted with semi-fitted front closing with a fly, and has tight-fitting back, which can be made in any length up to 24 inches for prices quoted below. Tailored straps of the material outline the seams on both front and back, finished with pointed tabs ornamented with buttons.

The **Skirt** is nine gored, stitched to below the hips, and the fulness falls in plaits. Two folds of the material are applied around the bottom.

*For prices quoted Jacket will be lined throughout with Good Satin; Skirt unlined.

Made of	Price of	Price of	Price of
QUALITY	SUIT	JACKET	SKIRT
A cloth	\$14.00	\$ 8.50	\$ 6.00
B "	15.50	9.00	7.00
C "	17.00	9.75	8.00
D "	19.00	10.50	9.25
E "	21.00	11.25	10.50
F "	23.00	12.00	12.00
G "	25.00	12.75	13.50

*Add \$2.50 if taffeta silk or Skinner's satin lining is desired in Jacket 1037; add \$2.00 if desired in Jacket 1038; or \$1.75 if desired in Jacket 1039. You may select the Jacket of one style and the Skirt of another; see page 8 for particulars as to prices.



WE MAKE THESE GARMENTS TO ORDER ONLY—SAMPLES OF MATERIALS SENT FREE.

No. 1040 . . \$10.00 up

A delightful suggestion of mannishness characterizes this handsomely tailored costume, which will be found appropriate for shopping, visiting or general wear.

The Jacket displays a single-breasted half loose-fitting front with a fly closing, and a tight-fitting back. A flatly applied stitched collar and lapped seams contribute to the attractive tailored appearance. For prices quoted below the Jacket can be made any length in back up to 24 inches.

The Skirt has seven gores which are stretched to a short distance above the knee, and plaits take up the fullness below.

*For prices quoted Jacket will be lined throughout with Good Satin; Skirt unlined:

Made of	Price of	Price of	Price of
QUALITY	SUIT	JACKET	SKIRT
A cloth	\$10.00	\$ 6.00	\$ 4.50
B "	11.50	6.50	5.50
C "	13.00	7.00	6.50
D "	15.00	7.75	7.75
E "	17.00	8.50	9.00
F "	19.00	9.25	10.25
G "	21.00	10.00	11.75

No. 1041 . . \$17.00 up

Braid is introduced in the decoration of this chic model which bears evidence in every detail of our superior workmanship.

The Jacket is single-breasted and semitailed in front and the tight-fitting back displays the customary coat lap and plaits. The trimming device on front consists of straps of the material piped with taffeta. Can be made any length up to 36 inches in back for prices quoted below.

The Skirt shows eight gores arranged to form two plaits at each seam and two box-plaits in front stitched to the knee, with plaits giving the proper flare below.

*For prices quoted Jacket will be lined throughout with Good Satin; Skirt unlined:

Made of	Price of	Price of	Price of
QUALITY	SUIT	JACKET	SKIRT
A cloth	\$17.00	\$10.50	\$ 7.00
B "	19.00	11.50	8.00
C "	21.00	12.50	9.00
D "	23.00	13.50	10.50
E "	25.25	14.50	12.25
F "	27.50	15.50	14.00
G "	30.00	16.50	15.75

No. 1042 . . \$13.50 up

A simple and correctly made tailored suit is a necessity, and this neat design is unobtrusive yet stylish and will respond to all demands.

The Jacket which is half loose-fitting in front is single-breasted and closes with a fly. The back is tight-fitting and can be made in any length up to 24 inches for prices quoted below. Both back and front are ornamented with straps of the material and a velvet in-laid collar provides an attractive completion.

The Skirt consists of seven gores with two plaits allowed on each seam, stitched above the knee falling in graceful fullness below.

*For prices quoted Jacket will be lined throughout with Good Satin; Skirt unlined:

Made of	Price of	Price of	Price of
QUALITY	SUIT	JACKET	SKIRT
A cloth	\$13.50	\$ 8.50	\$ 5.50
B "	15.00	9.00	6.50
C "	16.50	9.50	7.50
D "	18.00	10.25	8.75
E "	20.00	11.00	10.00
F "	22.00	11.75	11.50
G "	24.00	12.50	13.00

*Add \$1.75 to the above prices if taffeta silk or Skinner's satin lining is desired in Jacket 1040 or 1042; or \$3.50 if desired in Jacket 1041. We will make any of these Jackets and Skirts separately; see prices given under each description.



WE MAKE THESE GARMENTS TO ORDER ONLY—SAMPLES OF MATERIALS SENT FREE.

No. 1043 . . \$14.00 up

Buttons supply the elaboration of this handsome construction, which is developed slightly on the Prince Chap outlines.

The **Jacket** has single-breasted fronts, that are semi-fitted, and the back, which can be made any length up to 24 inches for prices quoted below, is tight-fitting. Straps of the material on both back and front, cloth cuffs and a velvet collar trimmed with buttons provide an appearance of elegance.

The **Skirt** includes nine gores in side-plaited effect stitched to a little above the knee and hanging in plaits below. Three straps of the material decorate the bottom.

*For prices quoted Jacket will be lined throughout with Good Satin; Skirt unlined:

Made of	Price of	Price of	Price of
QUALITY	SUIT	JACKET	SKIRT
A cloth	\$14.00	\$8.75	\$ 5.75
B "	15.50	9.25	6.75
C "	17.00	9.75	8.00
D "	19.00	10.50	9.25
E "	21.00	11.25	10.75
F "	23.00	12.00	12.25
G "	25.00	12.75	13.75

No. 1044 . . \$15.00 up

The long coat designs may rightly be classed among the most recent fashions, and as their shaping is such as to improve the figure, their popularity is assured.

The **Jacket** conforms to the single-breasted designs, with semi-fitted front closing with a fly. The back is also semi-fitted, and for the prices quoted below can be made any length up to 36 inches. Oblique pockets are inserted, and lapped seams and a notched velvet collar give charm to this smart design.

The **Skirt** has nine gores formed in side-plaits and stitched to above the knee, with plaits flaring stylishly below.

*For prices quoted Jacket will be lined throughout with Good Satin; Skirt unlined:

Made of	Price of	Price of	Price of
QUALITY	SUIT	JACKET	SKIRT
A cloth	\$15.00	\$10.50	\$ 5.00
B "	17.00	11.50	6.00
C "	19.00	12.50	7.00
D "	21.00	13.50	8.25
E "	23.00	14.50	9.50
F "	25.00	15.50	11.00
G "	27.00	16.50	12.50

No. 1045 . . \$18.00 up

A Directoire vest effect is employed on this beautiful costume, the style of which makes it desirable for church or evening wear.

The **Jacket** is tight-fitting both back and front. The collar and cuffs may be made of silk, satin or velvet edged with garniture. The vest is ornamented with garniture to match, and braided elaborates the fronts. Long sleeves may be had without extra charge. For prices quoted below Jacket can be made any length in back up to 22 inches.

The **Skirt** has thirteen gores stitched to above the knee, while plaits form below. Two folds of the material trim the lower edge.

*For prices quoted Jacket will be lined throughout with Good Satin; Skirt unlined:

Made of	Price of	Price of	Price of
QUALITY	SUIT	JACKET	SKIRT
A'cloth	\$18.00	\$12.50	\$ 6.50
B "	20.00	13.50	7.50
C "	22.00	14.50	8.50
D "	24.00	15.50	9.50
E "	26.00	16.50	11.00
F "	28.00	17.50	12.50
G "	30.00	18.50	14.00

*Add \$1.75 to the above prices if taffeta silk or Skinner's satin lining is desired in Jacket 1043 or 1045; or \$3.50 if desired in Jacket 1044. You may select the Jacket of one style and the Skirt of another; see page 8 for particulars as to prices.



No. 1046 . . \$11.00 up

The stylish features of this tailored suit place it among the most exclusive fashions, and it is highly recommended for serviceable wear.

The **Jacket** is double-breasted, with a visible button closing, and the half loose-fitting fronts are in rounded effect at the lower edge. The back is tight-fitting, and can be made in any length up to 24 inches for prices quoted below. Lapped seams and flap covered pockets add to the tailored appearance.

The **Skirt** consists of seven gores, stitched in place to a little above the knee, from where graceful side-plaits are formed.

*For prices quoted Jacket will be lined throughout with Good Satin; Skirt unlined:

Made of	Price of	Price of	Price of
QUALITY	SUIT	JACKET	SKIRT
A cloth	\$11.00	\$ 7.00	\$ 4.50
B "	12.50	7.50	5.50
C "	14.00	8.00	6.50
D "	15.50	8.50	7.50
E "	17.00	9.25	8.75
F "	18.75	10.00	10.00
G "	20.75	10.75	11.25

No. 1047 . . \$7.50 up

The trim and youthful Eton is always in good taste, and this attractive design will appeal at once to anyone desiring a stylish costume.

The **Eton**, which is single-breasted, is tight-fitting in front, and also at the back, and extends to the waist line. A modified notched collar relieves the plainness of the neck, and the elbow sleeves display band cuffs of regulation width. Long sleeves may be had if desired, without extra charge.

The **Skirt** is shaped with seven gores, and a smart tailor finish is given by the use of lapped seams.

*For prices quoted Jacket will be lined throughout with Good Satin; Skirt unlined:

Made of	Price of	Price of	Price of
QUALITY	SUIT	JACKET	SKIRT
A cloth	\$ 7.50	\$ 6.00	\$ 3.50
B "	9.00	6.50	4.50
C "	10.50	7.00	5.50
D "	12.00	7.50	6.50
E "	13.50	8.00	7.75
F "	15.00	8.50	9.00
G "	16.50	9.00	10.25

No. 1048 . . \$15.00 up

Double-breasted models will be widely adopted this season by fashionable women. This beautiful example shows all the latest ideas, and is a charming selection.

The **Jacket** has double-breasted, half loose-fitting fronts, and the tight-fitting back can be made any length up to 24 inches for prices quoted below. Straps of the material, bordered with soutache braid, provide the elaboration. Fancy garniture decorates the collar.

The **Skirt** introduces ten gores, stitched to above the knee, falling in side-plaits below; two box-plaits ornament the front.

*For prices quoted Jacket will be lined throughout with Good Satin; Skirt unlined:

Made of	Price of	Price of	Price of
QUALITY	SUIT	JACKET	SKIRT
A cloth	\$15.00	\$10.00	\$ 5.50
B "	16.50	10.50	6.50
C "	18.00	11.00	7.50
D "	19.50	11.50	8.50
E "	21.00	12.25	9.75
F "	23.00	13.00	11.00
G "	25.00	14.00	12.50

*Add \$1.75 to the above prices if taffeta silk or Skinner's satin lining is desired in Jacket 1046 or 1048; or \$1.50 if desired in Jacket 1047. We will make any of these Jackets and Skirts separately; see prices given under each description.



WE MAKE THE SUITS SHOWN ON THIS PAGE TO ORDER ONLY—SAMPLES OF MATERIALS SENT FREE.

No. 1049 . . \$13.00 up

A fashionably made tailor suit fills the most important place in a woman's wardrobe. This mannish model has all of the essentials in every detail.

The **Jacket** is tight-fitting, with lapped seams employed on the single-breasted front, and also at the back which can be made in any length up to 24 inches for prices quoted below. Turn-back cuffs.

The **Skirt** consists of seven gores, with three plaits arranged at each seam, and stitched in place to above the knee, below which the fulness sets in plaits.

*For prices quoted Jacket will be lined throughout with Good Satin; Skirt unlined:

Made of	Price of SUIT	Price of JACKET	Price of SKIRT
A cloth	\$13.00	\$ 7.50	\$ 6.00
B "	14.50	8.00	7.00
C "	16.00	8.50	8.00
D "	17.50	9.25	9.25
E "	19.50	10.00	10.50
F "	21.50	10.75	12.00
G "	23.50	11.50	13.50

No. 1050 . . \$15.00 up

The double-breasted vognes have been revived because of their general air of becomingness, and this handsomely tailored suit typifies the popularity of these designs.

The **Coat**, which is double-breasted, is half loosely-fitted in front, trimmed with straps of the material and lapped seams. The back is smoothly fitted and is trimmed to correspond with the front; it can be made in any length up to 24 inches for prices quoted below.

The **Skirt** has thirteen gores, stitched to above the knee, and plaits are formed below. Folds furnish the ornamentation.

*For prices quoted Jacket will be lined throughout with Good Satin; Skirt unlined:

Made of	Price of SUIT	Price of JACKET	Price of SKIRT
A cloth	\$15.00	\$ 9.25	\$ 6.25
B "	16.50	10.00	7.25
C "	18.50	10.75	8.50
D "	20.50	11.50	9.75
E "	22.50	12.25	11.25
F "	24.50	13.00	12.75
G "	26.50	13.75	14.25

No. 1051 . . \$14.00 up

The adoption of lapped seams as a decorative finish, is a conspicuous feature of this trim street or traveling costume.

The **Coat** is double-breasted and is semi-fitted both front and back. Coat sleeves and a masculine notched collar are used. Lapped seams give the correct tailor completion, appearing also at the back which can be made in any length up to 34 inches for prices quoted below.

The **Skirt** comprises seven gores, stitched to a short distance above the knee, where side-plaits give the fashionable flare.

*For prices quoted Jacket will be lined throughout with Good Satin; Skirt unlined:

Made of	Price of SUIT	Price of JACKET	Price of SKIRT
A cloth	\$14.00	\$10.00	\$ 4.50
B "	16.00	11.00	5.50
C "	18.00	12.00	6.50
D "	20.00	13.00	7.50
E "	22.00	14.00	8.75
F "	24.00	15.00	10.00
G "	26.00	16.00	11.25

*Add \$7.75 to the above prices if taffeta silk or Skinner's satin lining is desired in Jackets 1049 and 1050; or \$3.25 if desired in Jacket 1051. You may select the Jacket of one style and the Skirt of another; see page 8 for particulars as to prices.



WE MAKE THESE GARMENTS TO ORDER ONLY.

No. 1052 . . \$12.00 up

To be correctly dressed should be the ideal of every woman, and the adoption of the nobby Prince Chap model illustrated above, makes it possible for this ambition to be realized at minimum cost.

The **Jacket** is semi-fitted in front, where the closing is single-breasted, and the back, which is also in semi-fitted effect, can be made in any length up to 24 inches, for prices quoted below. Lapped seams contribute to the tailored appearance. The notched collar and fashionable cuffs are of the same material.

The **Skirt**, which is one of the graceful plaited models, flares fashionably at the bottom, and consists of nine gores stitched to a little above the knee, falling in becoming side-plaits below.

*For prices quoted Jacket will be lined throughout with Good Satin; Skirt unlined:

Made of	Price of	Price of	Price of
QUALITY	SUIT	JACKET	SKIRT
A cloth	\$12.00	\$ 7.50	\$ 5.00
B "	13.50	8.25	6.00
C "	15.00	9.00	7.00
D "	17.00	9.75	8.25
E "	19.00	10.50	9.50
F "	21.00	11.25	11.00
G "	23.00	12.00	12.50

No. 1053 . . \$14.00 up

A stylish tailor-made costume always commands admiration, and this faultless design is one of the most charming and attractive models for this season.

The **Coat** displays a single-breasted, semi-fitted front, closing with a fly, and the back is half-fitting in Prince Chap outline. The garment is stylishly finished with mannish collar and cuffs, and flap pockets. For prices quoted below, it can be made in any length in back up to 30 inches.

The **Skirt** exhibits the plaited effect so much in vogue this season, and is composed of eight gores which are stitched to about the knee, graduating into generous width at the bottom; two box-plaits are arranged in front.

*For prices quoted Jacket will be lined throughout with Good Satin; Skirt unlined:

Made of	Price of	Price of	Price of
QUALITY	SUIT	JACKET	SKIRT
A cloth	\$14.00	\$ 9.00	\$ 5.50
B "	16.00	10.00	6.50
C "	18.00	11.00	7.50
D "	20.00	12.00	8.50
E "	22.00	13.00	10.00
F "	24.00	14.00	11.50
G "	26.00	15.00	13.00

SAMPLES OF MATERIALS SENT FREE.

No. 1054 . . \$18.00 up

The charm and exclusiveness of this elegant Pony model is attributable to its striking decorative treatment.

The **Jacket** is semi-fitted in both front and back, and can be made in any length up to 24 inches in back for prices quoted below.

The distinctive feature of the garment is an embellishment of tailor braid, applied down the full length of both front and back, on the lower edge, and around the armhole. The closing is made with hooks and eyes concealed by rows of fancy garniture, and a similar decoration is employed on the cloth cuffs and on the collar, which can be faced with silk or satin.

The **Skirt** is elaborately plaited and consists of eleven gores, with each alternate gore formed of short panels lengthened by inverted plaits, the desired flare being obtained in full length plaits and side-plaits.

*For prices quoted Jacket will be lined throughout with Good Satin; Skirt unlined:

Made of	Price of	Price of	Price of
QUALITY	SUIT	JACKET	SKIRT
A cloth	\$18.00	\$12.25	\$ 6.25
B "	20.00	13.25	7.25
C "	22.00	14.25	8.25
D "	24.00	15.25	9.25
E "	26.00	16.25	10.50
F "	28.00	17.25	12.00
G "	30.00	18.25	13.50

*Add \$1.75 to the above prices if taffeta silk or Skinner's satin lining is desired in Jacket 1052 or 1054; or \$2.50 if desired in Jacket 1053. We will make any of these Jackets and Skirts separately; see prices given under each description.



WE MAKE THESE GARMENTS TO ORDER ONLY.

No. 1055 . . \$16.00 up

The Gibson shoulders are a feature of this attractive street suit, which is highly tailored, and in accordance with prevailing styles.

The **Jacket** is single-breasted with a visible button closing, and semi-fitted both in front and back. It can be made in any length up to 24 inches in back for prices quoted below. Lapped seams and braid provide the embellishing touches; collar is trimmed to accord with sleeves; straps give a broad effect to the shoulders.

The **Skirt** has nine gores, arranged in full length box-plaits alternated by pointed panels finished with braid, and lengthened by inverted plaits.

*For prices quoted Jacket will be lined throughout with Good Satin; Skirt unlined:

Made of	Price of	Price of	Price of
QUALITY	SUIT	JACKET	SKIRT
A cloth	\$16.00	\$10.25	\$ 6.25
B "	18.00	11.25	7.25
C "	20.00	12.25	8.25
D "	22.00	13.25	9.25
E "	24.00	14.25	10.50
F "	26.00	15.25	12.00
G "	28.00	16.25	13.50

No. 1056 . . \$13.50 up

The youthful contour imparted by this charming example of our correct tailor-mades will readily commend it to all.

The **Jacket**, which can be made in any length up to 24 inches in the back for prices quoted below, is half loose-fitting and double-breasted in front, and the back is tight-fitting. The collar can be inlaid with silk or satin edged with braid to match cuffs.

The **Skirt** includes seven gores, which are in side-plaited effect, and stitched to a little above the knee, falling in plaits below. A fold of the material is applied.

*For prices quoted Jacket will be lined throughout with Good Satin; Skirt unlined:

Made of	Price of	Price of	Price of
QUALITY	SUIT	JACKET	SKIRT
A cloth	\$13.50	\$ 9.00	\$ 5.00
B "	15.00	9.50	6.00
C "	16.50	10.00	7.00
D "	18.00	10.50	8.00
E "	20.00	11.25	9.25
F "	22.00	12.00	10.50
G "	24.00	12.75	12.00

SAMPLES OF MATERIALS SENT FREE.

No. 1057 . . \$14.50 up

This stylish suit shows its conformity to the latest edicts of fashion in every detail, and it is an excellent selection for the woman who wishes to be smartly gowned.

The **Jacket** displays a fly closing, and the single-breasted fronts are half tight-fitting, as also is the back, which can be made in any length up to 30 inches for prices quoted below. Lapped seams supply the necessary mannish suggestion which is further emphasized by patch pockets, and a velvet inlay ornaments the notched collar.

The **Skirt** consists of ten gores, disposed in four side-plaits on each side, and two box-plaits are formed at the center of the front.

*For prices quoted Jacket will be lined throughout with Good Satin; Skirt unlined:

Made of	Price of	Price of	Price of
QUALITY	SUIT	JACKET	SKIRT
A cloth	\$14.50	\$ 9.50	\$ 5.50
B "	16.50	10.50	6.50
C "	18.50	11.50	7.50
D "	20.50	12.50	8.50
E "	22.50	13.50	10.00
F "	24.50	14.50	11.50
G "	26.50	15.50	13.00

*Add \$r.75 to the above prices if taffeta silk or Skinner's satin lining is desired in Jacket 1055 or 1056; or \$2.50 if desired in Jacket 1057. We will make any of these Jackets and Skirts separately; see prices given under each description.

WE MAKE THE GARMENTS SHOWN ON
THIS PAGE TO ORDER ONLY.
SAMPLES OF MATERIALS SENT FREE.

No. 1058 . . \$17.00 up

A Tuxedo collar gives character to this fashionable tailor suit, and where purposes of dress with utility must be considered, this design answers all requirements.

The **Jacket** is tight-fitting both back and front with lapped seams decorating the single-breasted front, and also the back, which can be made any length up to 36 inches for prices quoted below. Pockets are inserted, and the collar and cuffs can be made of silk, satin or velvet.

The **Skirt** consists of thirteen gores stitched to a little above the knee, deep plaits falling below. Two folds of the material ornament the lower edge.

*For prices quoted Jacket will be lined throughout with Good Satin; Skirt unlined:

Made of QUALITY	Price of SUIT	Price of JACKET	Price of SKIRT
A cloth	\$17.00	\$11.00	\$ 6.50
B "	19.00	12.00	7.50
C "	21.00	13.00	8.50
D "	23.00	14.00	9.50
E "	25.00	15.00	11.00
F "	27.00	16.00	12.50
G "	29.00	17.00	14.00

No. 1059 . . \$16.00 up

This unusually stylish model represents one of the newest fashions in women's apparel and is a favorite in New York this season.

The **Jacket**, which is in military effect, is semi-fitted with the fronts closing edge-to-edge. Braid is generously used for the elaboration of the front, collar and cuffs, and similarly adorns the back, where the coat can be made any length up to 24 inches for prices quoted below.

The **Skirt** has nine gores that are confined in place by stitching and hang in plaits below the knee. Braid to match that employed on the jacket trims the bottom.

*For prices quoted Jacket will be lined throughout with Good Satin; Skirt unlined:

Made of QUALITY	Price of SUIT	Price of JACKET	Price of SKIRT
A cloth	\$16.00	\$ 9.50	\$ 7.00
B "	17.75	10.25	8.00
C "	19.50	11.00	9.00
D "	21.50	12.00	10.25
E "	23.50	13.00	11.50
F "	25.50	14.00	13.00
G "	27.50	15.00	14.50

No. 1060 . . \$14.00 up

A chic notched collar is the distinguishing feature of this smart street costume, the highly tailored finish of which is most attractive. For general service a suit of this type is indispensable.

The **Jacket** is double-breasted and displays half loose-fitting fronts that close regularly with buttons; the back is tight-fitting and can be made any length up to 24 inches for prices quoted below. The decoration consists of straps of the material in conjunction with buttons.

The **Skirt** is eight gored, and shows an arrangement of box-plaits with inverted plaits headed by straps of the material and trimmed with buttons and loops.

*For prices quoted Jacket will be lined throughout with Good Satin; Skirt unlined:

Made of QUALITY	Price of SUIT	Price of JACKET	Price of SKIRT
A cloth	\$14.00	\$ 8.50	\$ 6.00
B "	15.50	9.00	7.00
C "	17.00	9.50	8.00
D "	19.00	10.25	9.25
E "	21.00	11.00	10.50
F "	23.00	11.75	12.00
G "	25.00	12.50	13.50

*Add \$1.75 to the above prices if taffeta silk or Skinner's satia lining is desired in Jacket 1059 or 1060; or \$3.50 if desired in Jacket 1058. We will make any of these Jackets and Skirts separately; see prices given under each description.



WE MAKE THE GARMENTS SHOWN ON THIS PAGE TO ORDER ONLY. SAMPLES OF MATERIALS SENT FREE.

No. 1061 . . \$13.50 up

The youthful contour of this smart costume explains its popularity, and it is in every respect one of the most desirable models of the season.

The **Jacket** exhibits a semi-fitted back which can be made any length up to 24 inches for prices quoted below; the semi-fitted front fastens in double-breasted effect. The Tuxedo collar can be inlaid with silk or satin and the elaboration consists of straps of the material.

The **Skirt** includes nine side-plaited gores that are stitched to a little above the knee and plaits are formed below.

*For prices quoted Jacket will be lined throughout with Good Satin; Skirt unlined:

Made of QUALITY	Price of SUIT	Price of JACKET	Price of SKIRT
A cloth	\$13.50	\$ 9.00	\$ 5.00
B "	15.00	9.50	6.00
C "	16.50	10.00	7.00
D "	18.50	10.75	8.25
E "	20.50	11.50	9.50
F "	22.50	12.25	11.00
G "	24.50	13.00	12.50

No. 1062 . . \$14.00 up

Tailor braid is selected for decorating this pleasing model, and a cutaway outline is introduced on the fronts in conformity with the recent caprice of fashion.

The **Jacket** is developed with half loose-fitting fronts that close in single-breasted effect with buttons; lapped seams are employed as a finish. The mannish collar and cuffs accord in general style. For prices quoted below the tight-fitting back can be made any length up to 24 inches.

The **Skirt** displays five gores having three plaits arranged at each seam, and stitching holds them in place to a little above the knee. Plaits are gracefully adjusted below.

*For prices quoted Jacket will be lined throughout with Good Satin; Skirt unlined:

Made of QUALITY	Price of SUIT	Price of JACKET	Price of SKIRT
A cloth	\$14.00	\$ 9.00	\$ 5.50
B "	15.50	9.50	6.50
C "	17.00	10.00	7.50
D "	19.00	10.75	8.75
E "	21.00	11.50	10.00
F "	23.00	12.25	11.50
G "	25.00	13.00	13.00

No. 1063 . . \$17.50 up

This beautiful garment is the epitome of style and elegance, and the fortunate possessor of such a suit has every reason to be congratulated.

The **Jacket** is tight-fitting at the back and half tight-fitting in front where a double-breasted closing is employed above cutaway edges. Lapped seams provide a tailor completion; the collar and cuff accessories may be inlaid with silk or satin and trimmed with fancy braid. The Jacket can be made any length up to 26 inches in back for prices quoted below.

The **Skirt** comprises eleven gores with box-plaits alternated by pointed panels, below which inverted plaits are inserted.

*For prices quoted Jacket will be lined throughout with Good Satin; Skirt unlined:

Made of QUALITY	Price of SUIT	Price of JACKET	Price of SKIRT
A cloth	\$17.50	\$12.00	\$ 6.00
B "	19.50	13.00	7.00
C "	21.50	14.00	8.00
D "	23.50	15.00	9.25
E "	25.50	16.00	10.50
F "	27.50	17.00	12.00
G "	29.50	18.00	13.50

*Add \$r.75 to the above prices if taffeta silk or Skinner's satin lining is desired in Jacket **ro61** or **ro62**, or \$2.00 if desired in Jacket **ro63**. You may select the Jacket of one style and the Skirt of another; see page 8 for particulars as to prices.





WE MAKE THESE GARMENTS TO ORDER ONLY—SAMPLES OF MATERIALS SENT FREE.

No. 1064 . . \$10.00 up

A stylish dress is needed by every woman, and this model will respond to fashionable indoor or visiting service.

The **Waist** is tucked on the shoulders, with tucks arranged at the center of the back, where the closing is made. The front is shaped in a V, revealing a lace chemisette topped by a high stock. Buttons ornament the plastron front, and turn-back cuffs give a neat finish to the elbow sleeves; the belt is removable. Long sleeves may be had if desired, without extra charge.

The **Skirt** has thirteen gores, in side-plaited effect, stitched to a little below the hips and falling into deep plaits. Two folds of the material constitute the trimming.

Made of	Price of	Price of	Price of
QUALITY	SUIT	WAIST	SKIRT
A cloth	\$10.00	\$ 4.25	\$ 6.50
B "	11.75	4.75	7.50
C "	13.50	5.50	8.50
D "	15.50	6.25	9.75
E "	17.50	7.00	11.00
F "	19.50	7.75	12.50
G "	21.50	8.50	14.00

No. 1065 . . \$10.00 up

Straps and buttons are cleverly combined on this chic costume, and all of the season's latest essentials are embraced in its shaping, making it one of our most attractive suits.

The **Waist** exhibits a tucked cloth vest in chemisette outline. The popular Gibson plaits are employed on the shoulders, and the full length sleeves are trimly completed with regulation band cuffs. The stock collar is ornamented with a tab; the belt is removable. Closes in back.

The **Skirt** has eleven gores with alternate gores formed of short panels and inverted plaits, the desired flare being obtained by side and full length box-plaits.

Made of	Price of	Price of	Price of
QUALITY	SUIT	WAIST	SKIRT
A cloth	\$10.00	\$ 4.50	\$ 6.25
B "	11.50	5.00	7.25
C "	13.00	5.50	8.25
D "	14.75	6.25	9.25
E "	16.75	7.00	10.50
F "	18.75	7.75	12.00
G "	20.75	8.25	13.50

No. 1066 . . \$9.50 up

The charm of this exclusive design is emphasized by the introduction of straps and buttons as embellishing features, and it embodies the choicest requirements of style.

The **Waist** exhibits tucks in front and also at the back, and conventional cuffs finish the graceful elbow sleeves. The chemisette and collar are developed in lace, and a stitched band of the material with decorative buttons, provides the elaboration. A separate belt is included. Closes in back. Long sleeves may be had if desired, without extra charge.

The **Skirt** consists of ten gores with two box-plaits in front, and eight side-plaits which are stitched to a little above the knee, below which the fulness sets in plaits.

Made of	Price of	Price of	Price of
QUALITY	SUIT	WAIST	SKIRT
A cloth	\$ 9.50	\$4.50	\$ 5.50
B "	11.00	5.00	6.50
C "	12.75	5.75	7.50
D "	14.50	6.50	8.50
E "	16.50	7.25	10.00
F "	18.50	8.00	11.50
G "	20.50	8.75	13.00

We make our Shirt-Waist Suits without lining.
The belts shown are furnished only when entire suits are ordered.



WE MAKE THESE GARMENTS TO ORDER ONLY—SAMPLES OF MATERIALS SENT FREE.

No. 1067 . . \$6.00 up

No. 1068 . . \$9.50 up

No. 1069 . . \$8.00 up

Jumper Suits have achieved pronounced favor, and since the style of these chic costumes adds youthfulness to one's appearance, their continued popularity is assured. The prices quoted do not include the white shirt-waist shown with this costume.

The **Waist**, in Jumper effect, is sleeveless, and the deep rounding outline of the neck allows opportunity for any pretty fancy waist to be worn underneath. A shaped belt is included. Sleeves may be had at an extra charge according to material selected. The closing is concealed at the back.

The **Skirt** contains seven gores which are side-plaited and stitched to above the knee and from there fall into graceful, flaring plaits.

Pipings supply an air of smartness to this costume, which is a pleasing variation of the favorite shirt-waist suit and a correct attire for general fashionable usage.

The **Waist** is elaborated with narrow tucks which simulate a yoke, over which is arranged a plastron front trimmed with pipings and buttons; the stock is formed of tucks. Mitaine cuffs are employed on the full length sleeves, and the belt is detachable. The closing is made in back.

The **Skirt** is shaped with five gores formed with three plaits at each seam, and stitched to a little below the hips with graceful plaits falling below.

The demand for a stylishly made shirt-waist suit is universal, as the purpose of these models is to offer a happy compromise on formal dress, and they are therefore appropriate for outdoor as well as house wear.

The **Shirt-Waist** is in tailored suggestion, with tucks utilized in yoke effect in front and to vary the plain back; a visible button closing is formed through a box-plait in front. A tab completes the collar which harmonizes with the elbow cuffs, and a separate belt is supplied. Long sleeves may be had if desired, without extra charge.

The **Skirt** conforms to the nine gored shaping in side-plaited outline, stitched to a short distance above the knee, and the fulness hangs in plaits below.

Made of	Price of	Price of	Price of
QUALITY	SUIT	WAIST	SKIRT
A cloth	\$ 6.00	\$ 2.50	\$ 4.50
B "	7.50	3.00	5.50
C "	9.00	3.50	6.50
D "	10.50	4.00	7.50
E "	12.00	4.50	8.75
F "	13.50	5.00	10.00
G "	15.00	5.50	11.25

Made of	Price of	Price of	Price of
QUALITY	SUIT	WAIST	SKIRT
A cloth	\$ 9.50	\$ 4.50	\$ 5.50
B "	11.00	5.00	6.50
C "	12.50	5.50	7.50
D "	14.00	6.00	8.75
E "	15.75	6.50	10.00
F "	17.50	7.00	11.50
G "	19.50	7.50	13.00

Made of	Price of	Price of	Price of
QUALITY	SUIT	WAIST	SKIRT
A cloth	\$ 8.00	\$ 3.50	\$ 5.00
B "	9.50	4.00	6.00
C "	11.00	4.50	7.00
D "	12.50	5.00	8.25
E "	14.50	5.75	9.50
F "	16.50	6.50	11.00
G "	18.50	7.25	12.50

We make our Shirt-Waist Suits without lining.
The belts shown are furnished only when entire suits are ordered.

**No. 1070 . . \$6.50 up**

A beautifully tailored skirt is a recognized necessity of even the most unpretentious wardrobe, and this choice example of high-class workmanship should be in every woman's possession.

The **Skirt** is shaped with fourteen gores, which are stitched in place to a little below the hips, and becoming side-plaits are formed by the fullness below. Two box-plaits vary the plain effect of the front, and a deep fold of the material ornaments the lower edge.

Made of	QUALITY A cloth	\$ 6.50
"	"	B " " " "	7.50
"	"	C " " " "	8.50
"	"	D " " " "	9.75
"	"	E " " " "	11.25
"	"	F " " " "	12.75
"	"	G " " " "	14.50

No. 1071 . . \$5.50 up

For wear with separate blouses and jumpers a tailored skirt is an imperative need, and the simple construction of this model insures satisfactory service.

The **Skirt** is developed with thirteen gores, stitched to the knee, and so arranged that graceful side-plaits are disposed below.

Made of	QUALITY A cloth	\$ 5.50
"	"	B " " " "	6.50
"	"	C " " " "	7.50
"	"	D " " " "	8.75
"	"	E " " " "	10.00
"	"	F " " " "	11.50
"	"	G " " " "	13.00

No. 1072 . . \$3.50 up

Gored designs are a refreshing change from the stereotyped plaited styles, and one of the most recent ideas is employed here in a model that is adapted to plain, plaid or striped material.

The **Skirt** is smoothly adjusted at the top, with seven gores which flare becomingly toward the lower edge, and in accordance with popular demands the seams are manfully lapped.

Made of	QUALITY A cloth	\$ 3.50
"	"	B " " " "	4.50
"	"	C " " " "	5.50
"	"	D " " " "	6.75
"	"	E " " " "	8.00
"	"	F " " " "	9.50
"	"	G " " " "	11.00

**No. 1073 . . \$6.50 up**

The use of folds of the material which cleverly simulate man's tucks has met with instantaneous favor, and many of the latest models exhibit this device, which is adopted in the handsome conception illustrated above.

The **Skirt**, which adheres to the seven gored variety, displays two plaits at each seam, stitched to slight distance above the knee, below which deep side-plaits are disposed, and the decoration consists of two folds of the same material.

Made of	QUALITY A cloth	\$ 6.50
"	"	B " " " "	7.50
"	"	C " " " "	8.50
"	"	D " " " "	9.75
"	"	E " " " "	11.00
"	"	F " " " "	12.50
"	"	G " " " "	14.00

No. 1074 . . \$7.50 up

Various novel results are obtained by the adoption of plaits as a means of embellishment, as is charmingly illustrated by this attractive design, which makes an ideal selection for wear with fancy waists.

The **Skirt** is elaborated with box-plaits stylishly alternated by inserted plaits, and the garniture is provided in three folds of the same material which are applied as pictured.

The waist shown with this skirt is our No. 1295; see Page 42 of this Catalogue.

Made of	QUALITY A cloth	\$ 7.50
"	"	B " " " "	8.50
"	"	C " " " "	10.00
"	"	D " " " "	11.50
"	"	E " " " "	13.00
"	"	F " " " "	14.75
"	"	G " " " "	16.50

In selecting a suit you may order any of these skirts with any jacket or waist on pages 9 to 31. See page 8 for particulars as to prices.

We make our skirts with a ribbon band. An extra separate belt of the same material will be furnished for 25 cents.

For particulars regarding Materiality Skirts, see "Answers to Questions" on page 7.

We do not line our skirts,

We make the Skirts shown on this page to order only. Samples of materials sent free,



No. 1075 . . \$6.25 up

Panel conceits are eminently popular, as is affirmed by the newest designs, and this treatment forms the main embellishment of the model illustrated above, which is a pretty complement for dainty odd waists.

The Skirt is developed with eleven gores, arranged in full length plaits alternated by short panels which are lengthened by inverted plaits; side-plaits are also employed to produce the required flare.

Made of	QUALITY A cloth	\$ 6.25
"	"	B " " " "	7.25
"	"	C " " " "	8.25
"	"	D " " " "	9.25
"	"	E " " " "	10.50
"	"	F " " " "	12.00
"	"	G " " " "	13.50

No. 1076 . . \$7.25 up

Taffeta bands provide the garniture for this model, which combines elegance with style in its finish.

The Skirt exhibits box-plaits in full length effect, separated by inverted plaits, and the decoration is supplied by three taffeta bands between the panels.

Made of	QUALITY A cloth	\$ 7.25
"	"	B " " " "	8.50
"	"	C " " " "	9.75
"	"	D " " " "	11.00
"	"	E " " " "	12.50
"	"	F " " " "	14.00
"	"	G " " " "	16.00

No. 1077 . . \$6.00 up

The serviceable features of the good models render them available for a variety of purposes, and this chic example will be found to include all of the latest ideas.

The Skirt consists of seven gores, with an arrangement of three plaits at each seam, which are stitched to a short distance below the hips, the fulness falling in deep side-plaits below.

Made of	QUALITY A cloth	\$ 6.00
"	"	B " " " "	7.00
"	"	C " " " "	8.00
"	"	D " " " "	9.25
"	"	E " " " "	10.50
"	"	F " " " "	12.00
"	"	G " " " "	13.50



No. 1078 . . \$7.50 up

Box-plaits are a charming feature of the decorative scheme employed on this beautiful design, and for wear with jumpers or separate waists, it has few superiors.

The Skirt is box-plaited all around, with the plaits confined by stitching to below the hips, and three deep folds of the material give a stylish completion.

Made of	QUALITY A cloth	\$ 7.50
"	"	B " " " "	8.51
"	"	C " " " "	9.75
"	"	D " " " "	11.25
"	"	E " " " "	12.75
"	"	F " " " "	14.50
"	"	G " " " "	16.50

No. \$1079 . . \$7.25 up

This graceful construction may be appropriately worn to complete a becoming indoor toilette, with a lingerie or silk blouse, or it may be selected for street wear with a nobby fur or cloth jacket.

The Skirt is in box-plaited style, stitched to a little below the hips and the relieved fulness sets in wide fashionable plaits. Two folds of the same material contribute to its air of elegance.

The waist shown with this skirt is our No. 1226; see Page 42 of this Catalogue.

Made of	QUALITY A cloth	\$ 7.25
"	"	B " " " "	8.25
"	"	C " " " "	9.50
"	"	D " " " "	11.00
"	"	E " " " "	12.50
"	"	F " " " "	14.00
"	"	G " " " "	16.00

In selecting a suit, you may order any of these skirts with any jacket or waist on pages 9 to 31. See page 8 for particulars as to prices.

We make our skirts with a ribbon band. An extra separate belt of the same material will be furnished for 25 cents.

The prevailing skirt length in New York is two inches from the ground.

We do not line our skirts.

**No. 1080 . . \$5.50 up**

A fancy waist is always set off to advantage by a stylish skirt, and this design will prove an admirable selection.

The **Skirt** is constructed with nine gores and is side-plaited all around, with stitching securing the adjustment to a little above the knee. The decoration consists of a fold of the material.

The waist shown with this skirt is our No. 1230; see Page 42 of this Catalogue.

Made of	QUALITY A cloth	\$ 5.50
"	"	"	6.50
"	"	"	7.50
"	"	"	8.75
"	"	"	10.00
"	"	"	11.50
"	"	"	13.00

No. 1081 . . \$5.00 up

A neat effect is obtained with stitching on this model, and its simplicity of style makes it appropriate for informal or street wear.

The **Skirt**, which has seven gores arranged in side-plaited outline, is stitched to above the knee in the required way, and plaits give the desired flare at the bottom, where stitching provides the tailor finish.

Made of	QUALITY A cloth	\$ 5.00
"	"	"	6.00
"	"	"	7.00
"	"	"	8.00
"	"	"	9.25
"	"	"	10.50
"	"	"	11.75

No. 1082 . . \$3.00 up

The new Grecian border, which is the distinguishing feature of the latest Parisian designs, is used with striking effect on this chic model.

The **Skirt** consists of nine gores in side-plaited effect which are confined by stitching to a little below the hip. The ornamentation is produced with a Grecian border of the same material.

Made of	QUALITY A cloth	\$ 6.00
"	"	"	7.00
"	"	"	8.00
"	"	"	9.25
"	"	"	10.50
"	"	"	12.00
"	"	"	13.50

No. 1083 . . \$5.50 up

Two folds of the material supply the embellishing touches on this fashionable design, and the woman who selects this model may well congratulate herself on possessing one of the favorites worn in New York.

The **Skirt** comprises seven wide gores which form side-plaits that are held in place to about the knee by stitching, and plaits are disposed below, where two folds give the desired elaboration.

Made of	QUALITY A cloth	\$ 5.50
"	"	"	6.50
"	"	"	7.50
"	"	"	8.75
"	"	"	10.00
"	"	"	11.50
"	"	"	13.00

No. 1084 . . \$6.00 up

Panels and inverted plaits are used with striking effect upon this charming model, which combines all the essentials of style in its shaping. It has a chic air which wins admiration at once.

The **Skirt** displays eleven gores, which are arranged in full length box-plaits, alternated by panels with rounded ends, below which inverted plaits are formed.

Made of	QUALITY A cloth	\$ 6.00
"	"	"	7.00
"	"	"	8.00
"	"	"	9.25
"	"	"	10.50
"	"	"	12.00
"	"	"	13.50

In selecting a suit you may order any of these skirts with any jacket or waist on pages 9 to 31. See page 8 for particulars as to prices.

We make our skirts with a ribbon band. An extra separate belt of the same material will be furnished for 25 cents.

For particulars regarding Maternity Skirts, see "Answers to Questions" on page 7.

We do not line our skirts.

We make the Skirts shown on this page to order only.
Samples of materials sent free.



No. 1085 . . \$7.00 up

An atmosphere of style and elegance pervades this beautiful skirt, and it is one of our most popular designs.

The Skirt is constructed with ten gores, with three plaits allowed at each seam, varied by the introduction of inverted plaits, and stitched to a little above the knee.

The waist shown with this skirt is our No. 1228; see Page 42 of this Catalogue.

Made of	QUALITY A cloth \$	7.00
"	" B "	8.00
"	" C "	9.00
"	" D "	10.50
"	" E "	12.25
"	" F "	14.00
"	" G "	15.75

No. 1086 . . \$6.50 up

A panel box-plait is a feature of this creation, which is exceedingly correct for adoption with Prince Chap or natty little jackets.

The Skirt consists of thirteen gores which are stitched to a little below the hips. Two folds of the goods furnish the trimming.

Made of	QUALITY A cloth \$	6.50
"	" B "	7.50
"	" C "	8.50
"	" D "	9.50
"	" E "	11.00
"	" F "	12.50
"	" G "	14.00

No. 1087 . . \$5.00 up

The serviceable separate skirt is an indispensable feature of every woman's wardrobe. This design is severely plain in its style, and faultlessly tailored.

The Skirt includes nine gores, arranged in side-plaits that are stitched to a little below the hips, and wide plaits take up the fulness below.

Made of	QUALITY A cloth \$	5.00
"	" B "	6.00
"	" C "	7.00
"	" D "	8.25
"	" E "	9.50
"	" F "	11.00
"	" G "	12.50

We make the Skirts shown on this page to order only. Samples of materials sent free.

No. 1088 . . \$6.50 up

This handsomely tailored model is one of our most distinctive and graceful designs for fashionable outdoor wear, or dressy occasions.

The Skirt has nine gores, with wide box-plaits, and the alternate gores are formed by short panels lengthened by inverted plaits. The decoration consists of straps of the material and is suggestive of the new lattice embellishment.

Made of	QUALITY A cloth \$	6.50
"	" B "	7.50
"	" C "	8.50
"	" D "	9.75
"	" E "	11.00
"	" F "	12.50
"	" G "	14.00

No. 1089 . . \$5.00 up

A fold of the material is utilized as the simple garniture of this stylish skirt which shows to advantage in any of our stylish fabrics, and is exceedingly correct in every detail.

The Skirt exhibits seven gores that are stitched in place to about the knee and from there fall into wide side-plaits. The decorative fold at the lower edge adds to the appearance of the garment.

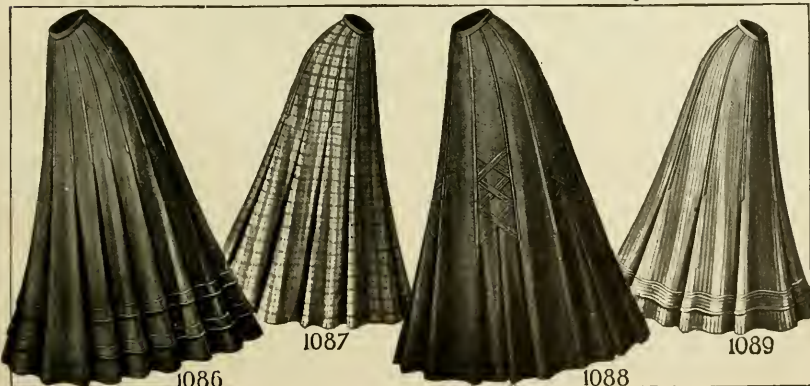
Made of	QUALITY A cloth \$	5.00
"	" B "	6.00
"	" C "	7.00
"	" D "	8.00
"	" E "	9.25
"	" F "	10.50
"	" G "	12.00

In selecting a suit, you may order any of these skirts with any jacket or waist on pages 9 to 31. See page 8 for particulars as to prices.

We make our skirts with a ribbon band. An extra separate belt of the same material will be furnished for 25 cents.

The prevailing skirt length in New York is two inches from the ground.

We do not line our skirts.





WE MAKE THESE GARMENTS TO ORDER ONLY.

SAMPLES OF MATERIALS SENT FREE.

No. 1090 . . \$11.00 up

Rain-coat in double-breasted style, loose-fitting in both front and back. This stylish garment introduces extensions over the shoulders in the popular Gibson effect. A collar is simulated by straps of the material, soutache braid and buttons uniquely applied. The full sleeves are neatly completed with pointed cuffs; lapped seams on both front and back; no lining. A new and handsome design, which will be found equally desirable for traveling and general wear.

Made of QUALITY C cloth..	\$11.00
" " D ..	12.50
" " E ..	14.00
" " F ..	15.50
" " G ..	17.00

No. 1091 . . \$12.00 up

Tourist or Rain-coat made with double-breasted front. The coat is loose-fitting both front and back; a belt confines the fulness at the waist. Strappings of the material are displayed down the full length of the front and back and around the arms, giving the new and fashionable Mikado outline. An elaborate collar device is employed, with straps of the material, ornamented with soutache braid. The full sleeves are tucked above chic turn-back cuffs; unlined.

Made of QUALITY C cloth..	\$12.00
" " D ..	13.50
" " E ..	15.00
" " F ..	16.50
" " G ..	18.00

No. 1092 . . \$10.00 up

Tourist or Rain-coat strictly man-tailored, finished with stitching. The Coat is semi-fitted both front and back, and is made with single-breasted fly closing; dart seams are employed on the shoulders, terminating under two breast-pockets which accord with the two hip-pockets in general character; the full sleeves are completed with turn-back cuffs; the coat is unlined. This trim and conservative coat is one of this season's favorite models.

Made of QUALITY C cloth..	\$10.00
" " D ..	11.50
" " E ..	13.00
" " F ..	14.50
" " G ..	16.00

No. 1093 . . \$8.75 up

Rain-coat or Traveling Ulster handsomely tailored. This smart design bears the London stamp in its shape, which is in box-effect, with double-breasted front. The stylish collar is decorated with buttons. The sleeves are in comfortable style, finished with stitching above the wrists, to give the appearance of cuffs; no lining is employed. A graceful coat, which in addition to its protective qualities is an attractive and appropriate garment for general wear.

Made of QUALITY C cloth..	\$8.75
" " D ..	10.00
" " E ..	11.50
" " F ..	13.00
" " G ..	14.50

For additional charges for lining these garments, see page 7, paragraph 16.

RAIN - PROOF MATERIALS.—We do not carry any rain-proof materials in our A or B grades, as we are unable to procure rain-proof goods below our C grade that we can recommend.

In sending measurements for these Rain-coats, give jacket measurements as called for on the diagram in the front of this Catalogue, and give full length from collar seam down center of back to the desired length.



THE CORSETS SHOWN ON THIS PAGE ARE READY-MADE.

120.—Nemo Corset, for medium or slender figures. This is a strong but light-weight model, designed to adjust itself perfectly to the figure. A comfortable and dainty corset which is offered at an unusually low price. Can be had in white or drab Coutil. Give waist measure and color desired. Sizes 18-31.—**Price \$1.00.**

159.—Nemo-Kosmo Corset with unbreakable hip; a model particularly designed for medium or stout figures. Strength and contour are given to the hips by the Kosmo hip which consists of bone strips crossing each other on the lower part of waist—a new and desirable feature. Can be had in white or drab Coutil. Give waist measure and color desired, when ordering. Sizes 19-30.—**Price \$1.50.**

205.—Nemo Swan-Shape Corset, for tall and medium figures. An extremely desirable model with long waist, fashionable high bust and small round hips. Constructed to display advantageously the graceful curves of the figure. Can be had in white Coutil only. Give waist measure, when ordering. Sizes 18-30.—**Price \$2.00.**

(For short, medium figures read 206.)
206.—Nemo Swan-Shape Corset, same model as 205, for short, medium figures, in white Coutil only. Give waist measure, when ordering. Sizes 18-30.—**Price \$2.00.**

301.—Nemo Military Belt Corset, especially suitable for medium figures. Comes down well over the hips, and has pliable winding lines producing a small waist and serving to keep the corset in place. The military belt attachment produces a graceful and erect carriage. Can be had in white Coutil only. Give waist measure when ordering. Sizes 18-30.—**Price \$3.00.**

312.—Nemo Self-Reducing Corset, for tall, stout women. The only corset that will positively reduce the abdomen without discomfort or injury. It adjusts itself to the figure and is equipped with the self-reducing relief strap, graduated front steel, and double garter attachment, making this corset a satisfactory foundation for a well fitting gown. White or drab Coutil. Give waist measure and color desired. Sizes 20-36.—**Price \$3.00.**

(For short, stout figures read 311.)

314.—Nemo Self-Reducing Corset, same model as 312, for short, stout figures; has a low bust, short under arms, and is long below waist line. Reduces the figure in a marked degree. Can be had in white or drab Coutil. Give waist measure and color desired. Sizes 20-36.—**Price \$3.00.**

HOW TO ORDER CORSETS—When ordering a corset, care should be taken to ascertain the correct size of the waist. To do this properly, measure the waist outside of the regular street costume, then deduct three inches; when wearing thin clothing, an allowance of two inches is sufficient.



SIZES OF WAISTS—32 TO 44 BUST.

1201.—Shirtwaist of white Madras with a double black hair-line check. Plaits on both front and back provide the elaboration, and the shirt sleeves exhibit buttoned cuffs; removable collar of stiff linen. Closes in front with buttons and buttonholes. Long sleeves only. Give bust measure, when ordering. **Price 98 cents.**

1202.—Waist of Poplin in white only, with elaborate tucked front of eyelet embroidery. A broad double box-plait is simulated in back by the use of tucks, and the collar and cuffs are neatly finished in the same manner. Closes invisibly in front. Long sleeves only. Give bust measure, when ordering. **Price 98 cents.**

1203.—Gibson Shirtwaist of Wool Mixture in black and red plaid, blue and black plaid or green and black plaid. The characteristic plaits are formed on the shoulders, and also at the back, a box plait being applied over the closing in front. A vest pocket is a stylish accessory and a separate collar of embroidered linen is furnished. Long sleeves only. Give bust measure and colors desired, when ordering. **Price \$1.25.**

1204.—Waist of lustrous Satene, in black only, with tucked yoke effect in front and full length clusters of tucks at the back. Removable stock with white hemstitched turn-over, to accord with the finish of the buttoned cuffs. The closing is made in front under a tucked plait. Long sleeves only. Give bust measure, when ordering. **Price \$1.25.**

1205.—Waist of Wool Mixture in green and gray, or gray and blue plaid effect. The front is distinguished by a cluster of pin tucks at each side of the visible closing, and plaits stitched to yoke depth contribute the necessary fullness. The back is tucked, and the collar and cuffs are similarly finished. Long sleeves only. Give bust measure and colors desired, when ordering. **Price \$1.25.**

1206.—Shirtwaist of Linenette in white only, with a yoke in pointed outline in both back and front, below which, on the front, plaits are arranged. A box-plait conceals the front closing and chic features are tab-effect cuffs and a detachable turn-over collar with tie. Long sleeves only. Give bust measure. **Price \$1.48.**

The Waists shown on this page are **READY-MADE** and can be furnished only as illustrated and described. We cannot make any alterations in these garments, nor can we send samples of the materials.



SIZES OF WAISTS—32 TO 44 BUST.

1207.—Waist of French Flannelette, in light gray with a darker gray stripe, or light blue striped with darker blue. Princess tucks and odd inserted plaits in front; the back has four plaits. The closing is made in front through a box-plait; pearl buttons. Long sleeves only. We do not furnish the collar and tie shown with this waist. Give bust measure and color desired, when ordering.

Price \$1.48.

1208.—Waist of fine Nun's Veiling in black or cream. Tucks in front, and two deep tucks in back, on either side. The closing is made in front under a box-plait. Conventional cuffs and detachable tucked collar. Long sleeves only. Give bust measure and color desired, when ordering.

Price \$1.48.

1209.—Waist of self-figured Mohair in cream only. Wide tucks and a cluster of fine tucks are introduced at each side of the box-plaited closing, which is made in front. Four full-length tucks in back. Tucked cuffs and collar. Long sleeves only. Give bust measure, when ordering.

Price \$1.48.

1210.—Waist of silk-finished Poplin, in white, light blue or navy. Gibson plaits on shoulders in front and back; V-shaped vest of horizontal tucking; removable tab collar and pointed band cuffs. The waist closes invisibly in back. Long sleeves only. Give bust measure and color desired, when ordering.

Price \$1.75.

1211.—Waist of black and white plaid Madras with mercerized white polka dots; mannish shirt back; tucked to short yoke depth in front. A white linen vest is introduced in front where the closing is effected. Separate stiff linen collar. We do not furnish the tie shown in the illustration. Long sleeves only. Give bust measure, when ordering.

Price \$1.75.

1212.—Waist of silk-finished Chambray in white only with entire front embroidered in repoussé effect and elaborated with Princess tucks. Clusters of tucks ornament the back, where the closing is made under a plait. Long sleeves only. Give bust measure, when ordering.

Price \$1.98.

The Waists shown on this page are **READY-MADE** and can be furnished only as illustrated and described. We cannot make any alterations in these garments, nor can we send samples of the materials.



SIZES OF WAISTS—32 TO 44 BUST.

1213.—Waist of Woolen Mixture, in gray with black figure, or gray with light blue figure. Tucks produce a desirable fullness in the front of the waist, where the closing is concealed under a box-plait. Plain French back; detachable collar and tie; shirt-cuffs; long sleeves only. Give bust measure and color desired, when ordering. **Price \$1.98.**

1214.—Waist of fine quality Mohair in cream or black. The front is made with two box-plaits forming a plastron, ornamented with silk buttons. Deep tucks on the shoulders; the back, where the closing is effected under a box-plait, is tucked to correspond; full sleeves with Mitaine cuffs; collar neatly tucked. Long sleeves only. Give bust measure and color desired, when ordering. **Price \$1.98.**

1215.—Waist of Pure Irish Linen in white only, with tucks front and back. The closing is made through a box-plait in the front. Detachable stiff linen collar and button cuffs; pearl buttons. Long sleeves only. We do not furnish tie shown in the illustration. Give bust measure, when ordering. **Price \$1.98.**

1216.—Waist of extra fine Nun's Veiling in cream or black, handsomely embroidered in silk. The closing is concealed under a box-plait in the front, which is tucked to yoke depth. Tucks embellish the back and also the cuffs and collar. Long sleeves only. Give bust measure and color desired, when ordering. **Price \$2.25.**

1217.—Waist of very fine Mohair in black and white plaid only, trimmed with black silk buttons; the neck is irregularly shaped to admit a vest of the material ornamented with straps. Plaits are formed at each side of the invisible closing at the back. Long sleeves only. Give bust measure, when ordering. **Price \$2.75.**

1218.—Dress Waist of fine Nun's Veiling in black or cream; round tucked taffeta yoke on both back and front, with pipings to match. The bertha is extended in plastron outline, trimmed with silk buttons; tucks are employed; the back is similarly treated and closes invisibly. Mitaine cuffs and a tucked taffeta collar are included. Long sleeves only. Give bust measure and color desired, when ordering. **Price \$2.98.**

The Waists shown on this page are **READY-MADE** and can be furnished only as illustrated and described. We cannot make any alterations in these garments, nor can we send samples of the materials.



SIZES OF WAISTS—32 TO 44 BUST.

1219.—Waist of fine Wool Striped Plaid; in gray with cream satin stripes, or green with reseda-green satin stripes. The front opens under an applied box-plait, and is made with three tucks on each side, stitched to yoke depth; plain French back. Reversed button cuffs are exhibited, and the detachable embroidered linen collar is completed with a silk tie. Long sleeves only. Give bust measure and colors desired, when ordering. **Price \$2.98.**

1220.—Waist of Taffeta in black or white, with richly embroidered front embellished with tucks, the back also exhibiting tucks. Tucked cuffs and straight band collar; closes invisibly in front. Long sleeves only. Give bust measure and color desired, when ordering. **Price \$2.98.**

1221.—Waist of fine black and white hair-line striped Taffeta, trimmed with pin-tucked taffeta, stitching and silk buttons. A plastron device is introduced, which includes a short tucked yoke of plain black taffeta; plaits are arranged at the sides. The tucked back closes invisibly; tucked collar and cuffs. Long sleeves only. Give bust measure, when ordering. **Price \$3.48.**

1222.—Waist of very fine plaid Taffeta, in black and white, navy blue and white, or dark green and white. Elaborate yoke of Princess tucks with strapped devices, ornamented with satin buttons; the back is plaited on each side of the invisible closing. Tucked collar and cuffs. Long sleeves only. Give bust measure and colors desired, when ordering. **Price \$3.98.**

1223.—Dress waist of extra fine Taffeta in black or white, with handsome yoke effect of tucks, and box-plaits. A chemisette is employed with pointed revers, hand-embroidered in French knots. The back displays three full-length clusters of dwarf tucks, and the cuffs and collar are tucked to match; dainty ruching at the neck, and Louis XV. bow; closes invisibly in front. Long sleeves only. Give bust measure and color desired, when ordering. **Price \$4.48.**

1224.—Waist of high grade Taffeta in black or white, with embroidered panels, and guipure insert, Val lace and tucks contributing to the decoration. A deep yoke and plastron effect are displayed, and tucks are formed at each side of the invisible closing in back. The collar is trimmed with lace, and lace cuffs finish the sleeves, which show embroidered panels. Short sleeves only. Give bust measure and color desired. **Price \$4.98.**

The Waists shown on this page are READY-MADE and can be furnished only as illustrated and described. We cannot make any alterations in these garments, nor can we send samples of the materials.



1225.—Waist of fine Taffeta with blue, white or black bodice. Chemisette of tucked white Brussels net and Renaissance insertion. Princess tucks in yoke depth on front and in back, where the closing is made invisibly; bands of Renaissance insertion on front and on Gibson shoulders; sleeves composed of rows of white accordion-plaited Brussels net ruffles. Cuffs and collar trimmed to harmonize with yoke. Short sleeves only. Give bust measure and color desired, when ordering. **Price \$5.75.**

are tucked, and adorned with lace. Closes invisibly in back. Short sleeves only. Give bust measure. **Price \$4.50.**

1230.—Waist of fine French Net in white or ecru over China Silk. Princess tucked yoke in front, and at the back, with poussé lace bands. Overlapping Val lace frills on both back and front and at tops of elbow sleeves. Cuffs and collar are entirely of lace. An exquisite design. Short sleeves only. Closes invisibly in back. Give bust measure and color desired. **Price \$4.98.**

1226.—Waist of rich Taffeta in white or black. The Van Dyck yoke, which also extends around the back, is composed of imitation Baby Irish lace, with narrow inserts of Mechlin, frilled on all edges with French Val.; sleeves exhibit panels of silk embellished with inserts of lace. Cuffs and collar admit V-shaped inserts of Mechlin. Closes invisibly in back. Short sleeves only. Give bust measure and color desired. **Price \$6.98.**

1227.—Waist of Brussels Net in white only, over China Silk, with yoke device of imitation Baby Irish lace, uniting Brussels net; tucked panels edged with German Val. in front; back tucked to yoke depth. The cuffs and collar are adorned with lace. Closes invisibly in back. Short sleeves only. Give bust measure. **Price \$2.98.**

1228.—Waist of Brussels Net in white or ecru over China Silk, with Cluny bands on front and back, and with clusters of shirr tucks on front. Cluny forms the frilled cuffs and collar, ornamenting the sleeves as well. Closes invisibly in back. Short sleeves only. Give bust measure and color desired. **Price \$3.75.**

1229.—Waist of Brussels Net over China Silk, in white only, with plastron and tucked yoke of Baby Irish insertion, frilled with lace which extends around the back. A Princess lace medallion is applied, and bayadere tucks edged with Val. lace, trim the lower part of the waist on both front and back, and also the sleeves. Collar and cuffs



1249.—Sweater of finest quality Australian Worsted, closely knitted; pearl buttons; three pockets. Colors: white, cardinal or gray. Sizes 32 to 44 bust. Give bust and color desired, when ordering. **Price \$3.48.**

1250.—Misses' Norfolk Jacket, same style and quality as 1251. White, cardinal, gray or navy, in solid colors. Sizes 28 to 34 bust. Give bust and color desired, when ordering. **Price \$1.35.**

1251.—Child's Norfolk Jacket of Wool; single-breasted, buttoned front. Colors: white, cardinal, gray or navy. The gray and navy have cardinal collar, cuffs and belt. Sizes 22 to 26 chest. Give chest measure and color desired, when ordering. (For Misses' sizes read 1250.) **Price 85 cents.**

1252.—Vest of fine Zephyr Worsted Yarn. Double-breasted front in whip-cord stitch; ribbed back; edges bound with braid. Colors: white, cardinal, gray or black. Sizes 32 to 44 bust. Give bust and color desired, when ordering. (For same model in wool read 1253.) **Price \$1.48.**

1253.—Vest, similar in style to 1252, made of Wool. Double-breasted front, in honey-comb pattern; ribbed back; pearl buttons; edges bound with braid. Colors: white, cardinal or gray. Sizes 32 to 44 bust. Give bust and color desired. **Price 98 cents.**

1254.—Blouse Sweater of Wool in pineapple stitch. Collarless V neck; pearl buttons. Colors: white, cardinal, gray or black. Sizes 34 to 44 bust. Give bust and color desired, when ordering. (For Misses' sizes read 1255.) **Price \$1.45.**

1255.—Blouse Sweater, same style and quality as 1254, but in Misses' sizes only. Colors: white, cardinal, gray, navy or black. Sizes 28 to 32 bust. Give bust and color desired, when ordering. **Price \$1.19.**

1256.—Blouse Sweaters of fine Zephyr Worsted Yarn in whip-cord pattern; fine pearl buttons. Colors: white, cardinal or gray. Sizes 32 to 44 bust. Give bust and color desired, when ordering. **Price \$2.25.**

1257.—Sweater in Pony style, of fine quality Wool in vertical

color desired, when ordering. **Price \$1.45.**

1258.—Sweater in Pony style, same design and quality as 1257, but in Misses' sizes only. Colors: white, cardinal, gray or navy. Sizes 28 to 32 bust. Give bust and color desired, when ordering. **Price \$1.85.**

1259.—Norfolk Sweater of fine Wool in Marseilles stitch; pearl buttons. Colors: white, cardinal, gray or black. Sizes 32 to 44 bust. Give bust and color desired, when ordering. **Price \$2.75.**

stitch; pearl buttons; two pockets. Colors: white, cardinal or gray. Sizes 34 to 44 bust. Give bust and color desired, when ordering. (For Misses' sizes read 1258.) **Price \$2.35.**

1258.—Sweater in Pony style, same design and quality as 1257, but in Misses' sizes only. Colors: white, cardinal, gray or navy. Sizes 28 to 32 bust. Give bust and color desired, when ordering. **Price \$1.85.**

1259.—Norfolk Sweater of fine Wool in Marseilles stitch; pearl buttons. Colors: white, cardinal, gray or black. Sizes 32 to 44 bust. Give bust and color desired, when ordering. **Price \$2.75.**

The garments shown on this page are **READY-MADE** and can be furnished only as illustrated and described. We cannot make any alterations in these garments, nor can we send samples of the materials.



SIZES OF NIGHTGOWNS— 32 TO 44 BUST.

1260.—Nightgown of Muslin in Mother Hubbard style; a handsome pattern of open-work embroidery, and hemstitching are used on the yoke; the back is plain. A frill ornaments the neck and the long sleeves, producing a dainty finish. Give bust measure, when ordering. **Price 49 cents.**

1261.—Nightgown of Muslin with tucked yoke embellished with Torchon lace. The V neck displays a lawn frill and a similar completion is employed on the long sleeves. A popular design which is offered at an unusually low price. Give bust measure, when ordering. **Price 59 cents.**

1262.—Nightgown of Muslin with Gretchen yoke of embroidery and tucks. A ruffle of Hamburg edging outlines the neck and the long sleeves. A ribbon bow contributes a dainty finish. Give bust measure, when ordering. **Price 79 cents.**

1263.—Nightgown of good Muslin with tucked yoke in hemstitched finish and Hamburg insertion in front; plain yoke in back. A ribbon bow adds to the effect, and the neck and long sleeves are trimmed with embroidery ruffles. Rows of briar-stitching add to the beauty of this charming and serviceable gown. Give bust measure, when ordering. **Price 95 cents.**

1264.—Nightgown of excellent grade Muslin with French yoke of open-work embroidery, scalloped at the top and threaded with

ribbon; plain yoke at back; daintily frilled long sleeves. This new and exclusive design is modeled after the latest Parisian ideas. Give bust measure, when ordering. **Price 98 cents.**

1265.—Nightgown of fine Muslin with elaborate Pompadour yoke, run through with ribbon; neck and sleeves decorated with embroidery; bows of ribbon add to the attractive effect. Give bust measure, when ordering. **Price \$1.10.**

1266.—Nightgown of fine grade Muslin, with long sleeves and neck frilled with embroidery. The yoke in front is of hemstitched tucks and embroidery, in Dutch outline; plain square yoke in back. Give bust measure, when ordering. **Price \$1.35.**

1267.—Nightgown of very soft Muslin; openwork embroidered Pompadour yoke with ribbon-run lace beading; neck and sleeves are finished with a ruffle of exquisite Swiss edging. The superior material and handsome finish of this gown make it particularly desirable. Give bust measure, when ordering. **Price \$1.59.**

1268.—Nightgown of high grade Cambric in Empire design, with square yoke of baby tucks and embroidery, outlined with hemstitching. French Val lace decorates the neck and elbow cuffs, and Swiss beading threaded with ribbon lends a touch of elegance. Give bust measure, when ordering. **Price \$1.98.**

The garments shown on this page are **READY-MADE** and can be furnished only as illustrated and described. We cannot make any alterations in these garments nor can we send samples of the materials.



SIZES OF PETTICOATS—38 TO 44 SIDE LENGTH. CORSET COVERS—32 TO 44 BUST.

1270.—Petticoat of Muslin. The lower edge is completed by a gathered flounce which is elaborated with tucks introduced in clusters. The bottom is neatly hemstitched. Give side length, when ordering. **Price 49 cents.**

1271.—Petticoat of good quality Muslin, with draw-string adjustment at the top. Gathered flounce embellished with tucks; ruffle of open-work Hamburg embroidery. Give side length, when ordering. **Price 79 cents.**

1272.—Petticoat of cambric-finished Muslin with serviceable dust-ruffle. A deep, graceful flounce is employed, and rows of Medici lace, headed by tucks, and separated by bands of lawn, provide the handsome decoration. Give side length, when ordering. **Price 98 cents.**

1273.—Petticoat of Cambric with a gathered flounce elaborately tucked, and in hemstitched finish. A ruffle of Swiss raised embroidery contributes to the charming appearance; a dust-ruffle is included. Give side length, when ordering. **Price \$1.2.**

1274.—Petticoat of superior quality Muslin, stylishly constructed with a gathered flounce tucked above an open-work embroidery ruffle, below which a similar ruffle simulates a double flounce. The protector is completed with a gathered dust-ruffle. Give side length, when ordering. **Price \$1.48.**

1275.—Petticoat of Cambric with Pompadour flounce of Persian lawn attractively embellished with rows of Val. lace insertion. The shaped flounce is formed by rows of insertion, and tucks are utilized as a heading. A full gathered dust-ruffle is provided as a protection. Give side length, when ordering. **Price \$1.98.**

1276.—Petticoat of fine Cambric with a Princess flounce of unusual depth, which is ornamented with tucks in hemstitched finish, separated by Swiss insertion. Edging to match forms the ruffle at the foot. Give side length, when ordering. **Price \$2.75.**

1277.—Petticoat of choice quality Cambric with a deep French flounce elegantly adorned with bands embroidered in true lover's knots, alternated with Val. lace; clusters of tucks decorate the top of flounce. A generous lace-trimmed ruffle widens the lower edge. Give side length, when ordering. **Price \$3.25.**

1278.—Petticoat of superfine Cambric in Du Barry style, with a flounce composed of rounded Van Dycks, lavishly outlined with French Val in festoon suggestion. Ribbon-run Swiss beading forms the heading and the dust-ruffle is lace-trimmed. Give side length, when ordering. **Price \$3.98.**

1280.—Corset Cover of soft Muslin, with yoke edge of rows of Maltese lace ornamented by ribbon-run heading. A lace frill outlines the neck and armholes. Give bust measure, when ordering. **Price 24 cents.**

1286.—Corset Cover of fine Cambric with tucked back; fronts elaborated by V inserts of Val. lace and beading. The low neck and arm holes are trimmed with lace, and appliques of Princess embroidery add to the charm of this distinctive design. Give bust measure, when ordering. **Price 89 cents.**

1288.—Corset Cover of Persian Lawn, prettily tucked in clusters; the front is trimmed with Val. lace, and rows of same form the yoke. Ribbon-run lace frills the neck and armholes, and Swiss beading threaded with ribbon is used at the waist line. Give bust measure, when ordering. **Price \$1.25.**

The garments shown on this page are READY-MADE and can be furnished only as illustrated and described. We cannot make any alterations in these garments, nor can we send samples of the materials.



SIZES OF CORSET COVERS—32 TO 44 BUST. DRAWERS—23 TO 29 INCHES SIDE LENGTH.

1284.—Corset Cover of Cambric, tucked in front and gathered at the back. Lace edges the armholes and lace insertion and a frill separated by ribbon-beading ornaments the neck. Lace-trimmed tabs of repossé embroidery decorate the front. Give bust measure, when ordering. **Price 69 cents.**

1285.—Corset Cover of fine soft Cambric with tucked back; the front has a Van Dyck yoke of Hamburg embroidery and lace. Ribbon beading outlines the neck and a lace frill trims the neck and armholes. Give bust measure, when ordering. **Price 79 cents.**

1287.—Corset Cover of superior Cambric with French back; fronts elaborated with fine Swiss embroidery and an embroidery frill edges the rounded neck and armholes; ribbon beading. Give bust measure, when ordering. **Price 98 cents.**

1291.—Drawers of Muslin with shaped French band and draw-string. Deep lawn flounces trimmed with tucks and hem-stitching. Open or closed. Give side length, when ordering. **Price 24 cents.**

1292.—Drawers of Muslin with a gathered ruffle, and tucks arranged above an embroidery frill. The band is shaped at the top. Open or closed. Give side length, when ordering. **Price 39 cents.**

1293.—Drawers of good quality Muslin with tucks which form a heading for a tucked umbrella flounce edged with Torchon lace, and a gathered-ruffle. Open only. Give side length, when ordering. **Price 49 cents.**

1294.—Drawers of good quality Muslin tucked above gathered ruffles of open-work Swiss embroidery. The band is shaped, and the usual draw-string included. Open or closed. Give side length, when ordering. **Price 49 cents.**

1295.—Umbrella Drawers of Muslin with hemstitched tucks, separated by fancy briar-stitching. Eyelet embroidery ruffles contribute to the handsome effect. A French waist-band is employed. Open or closed. Give side length, when ordering. **Price 69 cents.**

1296.—Umbrella Drawers of soft Cambric decorated with lawn Empire ruffles trimmed profusely with lace. Wide ribbon-run beading with bow completion enhances the appearance. Open or closed. Give side length, when ordering. **Price 79 cents.**

1297.—French Drawers of good quality Muslin, shaped with darts which insure smooth adjustment at the top. A cluster of tucks disposed above lawn Van Dyck ruffles, fancied with Pointe de Paris lace. Open only. Give side length, when ordering. **Price 89 cents.**

1298.—Drawers of fine soft Cambric with Princess tucks formed as a heading for wide sheer flounces of French eyelet embroidery. Full, graceful shaping. Open only. Give side length, when ordering. **Price 98 cents.**

1299.—Umbrella Drawers of sheer Cambric, dart-fitted at the top and finished with tape for adjustment. Ruffles of Val lace introducing a band of embroidery of a beautiful pattern. Open only. Give side length, when ordering. **Price \$1.25.**

The garments shown on this page are **READY-MADE** and can be furnished only as illustrated and described. We cannot make any alterations in these garments, nor can we send samples of the materials.



SIZES OF CORSET COVERS, CHEMISES AND SLIPS—32 TO 44 BUST.

1281.—Corset Cover of good quality Muslin with V-shaped neck. The front has an elaborate yoke of hemstitched tucks and Val. lace. A ruffle of lace trims the neck and armholes, and ribbon beading gives the necessary fullness. Give bust measure, when ordering. **Price 32 cents.**

1282.—Corset Cover with full graceful front composed of alternating bands of lawn and Val. lace, and a plain cambric back. Ribbon beading borders the rounding neck which is filled with lace to correspond with the armholes. Give bust measure, when ordering. **Price 44 cents.**

1283.—Corset Cover of fine Muslin with French back. An odd arrangement of Val. lace and hemstitched tucks in front in plastron suggestion, forms an elaborate yoke at the top. The customary lace frill and ribbon beading provide the finish at the neck and armholes. Give bust measure, when ordering. **Price 49 cents.**

1289.—Slip of China Silk. Same model as 1290, in white, blue or pink. Give bust measure and color desired. **Price \$1.98.**

1290.—Slip of fine Lawn, in white, blue, or pink, with tucks arranged on the shoulders, providing the necessary fullness over the bust. The closing at the back is concealed under a fly, and a draw-string adjusts it at the waist. Cuffs finish the long sleeves. Give bust measure and color desired. **Price 49 cents.** (For Slip of China Silk read 1289.)

1301.—Chemise of soft Muslin with gathers introduced at the center. Wide Torchon edging threaded with ribbon simulates a front yoke, and the armholes and back exhibit a lace frill. Tucks decorate the ruffle. Give bust measure. **Price 59 cents.**

1302.—Chemise of good quality Muslin with a tucked ruffle arranged at the lower edge, and handsome yoke effect of Val. lace and ribbon beading. A lace frill ornaments the low outline of the neck and the armholes. Give bust measure. **Price 75 cents.**

1303.—Chemise of superior Cambric with yoke of Medici lace and ribbon beading. A lace frill edges the neck. The armholes are similarly filled with lace to match the tucked ruffle at the lower edge. Give bust measure, when ordering. **Price 98 cents.**

1304.—French Chemise of good quality Cambric with lace-trimmed lawn ruffle at the foot elaborated with tucks. Val. lace and edging, with ribbon beading provide the garniture for the low neck, and a handsomely embroidered yoke is introduced. Give bust measure, when ordering. **Price 98 cents.**

1305.—Chemise of fine Cambric with Du Barry yoke of Val. lace and repoussé embroidery, below which clusters of tucks are introduced. A lace yoke trims the back, and the armholes and neck exhibit a frill finish of lace, harmonizing with the tucked foot ruffle. Ribbon beading adds to the attractive appearance. Give bust measure, when ordering. **Price \$1.25.**

1306.—French Chemise of extra fine Cambric, with yoke of Val. medallions and ribbon beading below which tucks are employed. A lace frill trims the low neck and armholes, the foot ruffles of lawn showing a corresponding decoration, with tucks. Give bust measure, when ordering. **Price \$1.48.**

The garments shown on this page are **READY-MADE** and can be furnished only as illustrated and described. We cannot make any alterations in these garments, nor can we send samples of the materials.



1325.—Vest of ribbed fleece-lined Cotton, with high yoked neck, finished with crocheted edge; cream only. Price 24 cents.

1325P.—Pants to match, with shaped yoke band at top, closing at sides with buttons and provided with a draw-string in back. Price 24 cents.

1326.—Vest of fine quality ribbed fleece-lined Cotton, with tape run through crocheted edge at neck as a finish; cream only. Price 39 cents.

1326P.—Pants to match with button closing at sides and draw-string in back. Price 39 cents.

1327.—Vest of superior quality Egyptian Combed Cotton Yarn in ribbed effect, with silk crocheted edge and silk tape employed for adjustment around neck; cream only. Price 48 cents.

1327P.—Pants to match, with draw-string in back and button closing at sides. Price 48 cents.

1328.—Vest same style as 1327, made of superior quality Egyptian Combed Cotton Yarn in Jersey ribbed effect; finished with silk crocheted edge and silk tape around neck; fleece-lined; a soft warm garment; cream only. Price 55 cents.

1328P.—Pants to match, with French yoke band and the usual draw-string in back. Price 55 cents.

1329.—Vest of ribbed Merino, cotton and wool mixed, fleece-lined, silk tape at neck; cream or gray. Price 75 cents.

1329P.—Pants to match, with French yoke band, buttoning at sides, with usual draw-string in back. Price 75 cents.

1330.—Vest of excellent quality Merino in ribbed effect; half wool; fine wash ribbon and silk crocheted finish at neck; cream or gray. Price 95 cents.

1330P.—Pants to match, with button closing at sides and draw-string in back. Price 95 cents.

1335.—Union Suit of fleece-lined Cotton; medium weight; cream or gray. Price 48 cents.

1336.—Union Suit similar in style to 1335, but made of a very fine quality of Egyptian Combed Yarn, Jersey ribbed, heavy fleece-lined; cream only. Price 79 cents.

1337.—Union Suit of Jersey ribbed Merino, half wool, fleece-lined, cream or gray. Price 98 cents.

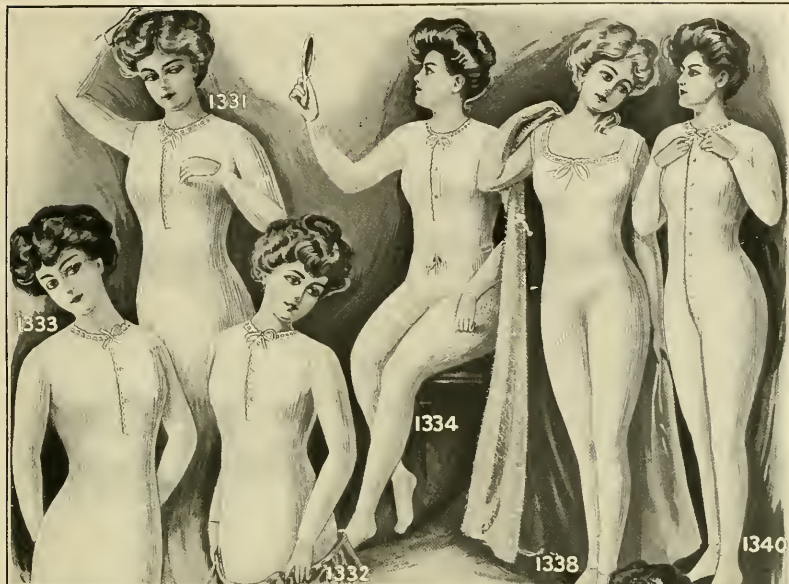
SIZES:—Vests and Union Suits can be furnished in sizes from 32 to 48 inches bust measure. Pants and Tights can be furnished in sizes from 20 to 38 inches waist measure. In ordering, simply give your bust measure for Vests and Union Suits, and waist measure for Pants and Tights, and we will send you the correct size.

All Vests are made with high neck and long sleeves.

All Pants and Tights are made ankle length; open only.

All Union Suits are made with high neck, long sleeves and in ankle length, except style 1338, which is made in ankle length, but with low neck and no sleeves.

1337



1331.—Vest of excellent quality Jersey ribbed Merino, extra heavy and three-quarters wool; fleece lined; cream only. **Price 95 cents.**

1331P.—Pants to match, buttoning at sides and with draw-string in back. **Price 95 cents.**

1332.—Vest of very fine English Merino in ribbed effect, medium weight, almost all wool, with just enough cotton to prevent shrinkage; cream only. **Price \$1.15.**

1332P.—Pants to match, buttoning at sides and with draw-string in back. **Price \$1.15.**

1333.—Vest of pure Australian Wool mixed with silk of a fine soft quality. Exceptional value; cream or gray. **Price \$1.25.**

1333P.—Pants to match, with French yoke band, buttoning at sides and with the usual draw-string in back. **Price \$1.25.**

1334.—Vest of very fine imported Wool, mixed with spun silk. This is one of the finest garments made; medium weight but very soft and warm; beautifully finished; cream only. **Price \$1.48.**

1334P.—Tights to match, made without a yoke band, but with draw-string; snug fitting. The absence of fullness makes the waist and hips appear smaller, and adds to the fit and appearance of outside garments. **Price 98 cents.**

1338.—Union Suit of very fine quality Egyptian Combed Yarn; low neck; sleeveless; elaborately finished around neck and armholes with silk crochet and wash silk ribbon; cream only. **Price \$1.48.**

1339.—Union Suit, same style as 1340; made of extra fine quality Egyptian Yarn; a particularly desirable garment; cream only. **Price \$1.25.**

1340.—Union Suit made of very fine quality ribbed Merino; almost all wool, just sufficient cotton to prevent shrinkage; medium weight; cream only. **Price \$1.59.**

1341.—Union Suit similar in style to 1340, made of extra fine quality ribbed Merino; all pure Australian Wool; full Winter weight; fine silk crocheted heading and wash ribbon finish at neck; cream only. **Price \$1.98.**

1342.—Union Suit of extra fine quality pure Australian Wool mixed with spun silk. A very fine, soft, warm garment, beautifully finished; cream or gray. **Price \$2.48.**

SIZES: Vests and Union Suits can be furnished in sizes from 32 to 48 inches bust measure. Pants and Tights can be furnished in sizes from 20 to 38 inches waist measure. In ordering, simply give your bust measure for Vests and Union Suits, and waist measure for Pants and Tights, and we will send you the correct size.

All Vests are made with high neck and long sleeves.

All Pants and Tights are made ankle length; open only.

All Union Suits are made with high neck, long sleeves and in ankle length, except style 1338, which is made in ankle length, but with low neck and no sleeves.





SIZES OF NIGHT GOWNS—32 TO 44 BUST. PETTICOATS—KNEE LENGTH.

1375.—Night Gown of striped Outing Flannel; square yoke and turn-down collar. Can be furnished in either blue and white or pink and white stripes. Give bust measure and colors desired, when ordering. **Price 59 cents.**

1376.—Night Gown of fine striped Outing Flannel. Silk embroidered beading outlines the yoke. Frills finish the sleeves and heading is used to border the band cuffs. Can be furnished in either blue and white or pink and white stripes. Give bust measure and colors desired, when ordering. **Price 79 cents.**

1377.—Night Gown of excellent quality Outing Flannel with a pointed yoke tucked and embroidered in silk. Beading edges the sleeves and neck, where gathered frills, finished with scallops embroidered in silk, are used as an ornamental finish. Can be furnished in either blue and white or pink and white stripes. Give bust measure and colors desired, when ordering. **Price 98 cents.**

1378.—Night Gown of very fine soft Outing Flannel with square lined yoke, formed with ribbon-run embroidery beading, and a scalloped embroidered ruffle. The long sleeves show a similar frill completion with fancy beading. Can be furnished in plain white, blue and white stripes or pink and white stripes. Give bust measure and colors desired, when ordering. **Price \$1.25.**

1379.—Petticoat of fancy striped Outing Flannel, with a gathered flounce. Can be furnished in either blue and white or pink and white stripes. Give colors desired, when ordering. **Price 29 cents.**

1380.—Petticoat of good quality Outing Flannel. Gathered flounce, embroidered in silk in scalloped outline. Can be furnished in either blue and white or pink and white stripes. Give colors desired, when ordering. **Price 45 cents.**

1381.—Petticoat of excellent grade of striped Outing or Shaker Flannel. A deep gathered flounce displays a wide hem, embroidered in briar-stitch design. Can be furnished in either blue and white or pink and white stripes. Give colors desired, when ordering. **Price 59 cents.**

1382.—Petticoat of fine French Striped Outing Flannel. Gathered flounce elaborated with wide tucks, headed with silk briar-stitching; the lower edge is scalloped and embroidered in silk. Can be furnished in blue and white or pink and white stripes. Give colors desired, when ordering. **Price 85 cents.**

1383.—Petticoat of extra fine quality white Outing Flannel. Three rows of briar-stitching are introduced in light blue silk above the graceful flounce, which is handsomely scalloped and embroidered in floral design. Can be had only in white with blue embroidery. **Price \$1.15.**

These Petticoats are made with a draw-string.

The garments shown on this page are **READY-MADE** and can be furnished only as illustrated and described.

We cannot make any alterations in these garments, nor can we send samples of the materials.



SIZES OF PETTICOATS—39 TO 43 INCHES SIDE LENGTH.

1401.—Petticoat of Satcen. The lower edge is widened by a deep accordion-plaited flounce with a circular ruffle. Can be furnished in black only. Give side length, when ordering.

Price 79 cents.

1402.—Petticoat of lustrous Satcen, with an accordion-plaited flounce. A gathered ruffle is applied on the flounce and lower edge. Can be furnished in black only. Give side length, when ordering.

Price 98 cents.

1403.—Petticoat of good quality Percaline, with an elaborate shirred flounce, accordion-plaited, and finished with a deep dust-ruffle. Can be furnished in black and white check only. Give side length, when ordering.

Price \$1.25.

1404.—Petticoat of high finished Satcen, with a flounce elaborated by a cluster of tucks and narrow gathered frills, below which a shirred flounce is applied. A dust-ruffle is employed. Can be furnished in black only. Give side length, when ordering.

Price \$1.49.

1405.—Petticoat of rustling Heatherbloom, with a bias gathered flounce. Diminutive tucks are generously used, below which two narrow gathered ruffles produce a bouffante effect. Can be furnished in black only. Give side length, when ordering.

Price \$1.95.

1406.—Petticoat of very fine rustling Heatherbloom with elaborate knee-depth flounce. Shirring in clusters supplies the ornamentation, and a graceful suggestion is secured by two bias

gathered flounces, in tucked effect, with frilled and corded top. Can be furnished in black, navy, myrtle-green, wine or gray. Give side length and color desired, when ordering. Price \$2.45.

1407.—Petticoat of all-silk Taffeta, with deep dust-ruffle of Percaline. A generous flounce and a cluster of shirrings contribute to the ornamental features. A bias gathered tucked ruffle widens the lower edge. Can be furnished in black only. Give side length, when ordering. Price \$3.98.

1408.—Petticoat of very fine all-silk Taffeta with a graceful! accordion-plaited flounce; a Percaline dust-ruffle is employed. A gathered flounce and two rows of ruching provide an attractive finish. Can be furnished in black, navy or wine; also in the following changeable colors; green and blue - gray and black; red and black; blue and black; green and black; and brown and black. Give side length and colors desired, when ordering. Price \$5.98.

1409.—Petticoat of very fine heavy all-silk Taffeta, of extraordinary beauty, with a deep flounce, which is fancified by vertical tucked clusters at the top. Rows of dwarf tucks embellish the gathered flounce, and a silk dust-ruffle is included. Can be furnished in black, navy, wine, myrtle-green or gray; also in the following changeable colors; red and black; blue and black; brown and black; green and black; and gray and black. Give side length and colors desired, when ordering. Price \$7.98.

These Petticoats are made with a draw-string.

The Petticoats shown on this page are READY-MADE and can be furnished only as illustrated and described. We cannot make any alterations in these garments, nor can we send samples of the materials.



SIZES OF KIMONOS, DRESSING SACQUES AND BATH ROBES—32 TO 44 BUST.

1451.—Kimono of striped Outing Flannel with square yoke and Mandarin sleeves, trimmed with flannel bands of Persian design. Colors: blue and white stripes, or gray and white stripes. Give bust measure and colors desired, when ordering.

Price 45 cents.

1452.—Kimono of German Flannel in Persian design with square yoke effect and Mandarin sleeves. A fancy band outlines the collarless neck and front edges, and also completes the sleeves. Colors: blue, gray or lavender figure on white ground. Give bust measure and colors desired, when ordering.

Price 55 cents.

1453.—Dressing Sacque of German Flannel with semi-fitted back and full fronts. The edges are scalloped and stitched to accord with the sailor collar and the frilled cuffs. Colors: blue, gray or lavender figure in Persian design on white ground. Give bust measure and colors desired, when ordering.

Price 65 cents.

1454.—Dressing Sacque of fine Swansdown Flannel; this soft, warm fabric is often sold fur Eiderdown. Fitted back and loose fronts. The entire garment, including collar and cuffs, finished with crochet stitching. Colors: white ground with blue or gray fancy stripe. Give bust measure and colors desired, when ordering.

Price 69 cents.

1455.—Dressing Sacque of German Flannel in fancy design; semi-fitted back and straight front, held in by belt. This comfortable sacque has long sleeves and a sailor collar. Colors: pretty

figured patterns with blue, gray or pink predominating. Give bust measure and color desired, when ordering. Price 79 cents.

1456.—Dressing Sacque of fine German Flannel. Bands of Persian design form an attractive trimming for the fronts, revers and kimono sleeves. The back is semi-fitted and the box plaits on shoulders give graceful fullness to fronts. Colors: blue or gray figured patterns. Give bust measure and color desired, when ordering.

Price 85 cents.

1457.—Kimono of striped Outing Flannel, with square yoke and Mandarin sleeves trimmed with flannel bands of Persian design. Exceptional value in a long kimono. Colors: blue and white stripes or gray and white stripes. Give bust measure and colors desired, when ordering.

Price 95 cents.

1458.—Kimono or Lounging Robe of German Flannel in floral pattern. All edges finished with briar-stitch embroidery and cording. The full back hangs from a yoke, and a Puritan collar gives the neck a graceful finish. Colors: gray ground with lavender flowers or blue ground with blue flowers. Give bust measure and colors desired, when ordering.

Price \$1.25.

1459.—Kimono or Vassar Dressing Gown of fine quality German Flannel, with plaited fronts. Wide satin bands edge the Mandarin sleeves, and outline the collarless neck, extending down the fronts. Colors: Dresden patterns with gray or blue predominating. Give bust measure and color desired, when ordering.

Price \$1.59.

The garments shown on this page are READY-MADE and can be furnished only as illustrated and described. We cannot make any alterations in these garments, nor can we send samples of the materials.



SIZES OF KIMONOS, DRESSING SACQUES AND BATH ROBES—32 TO 44 BUST.

1460.—Dressing Sacque of German Flannel with fancy garniture. The yoke is finished in plait effect, and a belt is attached to the semi-fitted back. A ruffle lengthens the lower edge. Can be furnished in gray figured patterns only. Give bust measure, when ordering. **Price 95 cents.**

1461.—Kimono of excellent quality Flannel in Persian pattern, satin decorative bands bordering the collarless neck, fronts and sleeves. The back is gathered to a straight yoke. Give bust measure, when ordering. **Price 98 cents.**

1462.—Dressing Sacque of fine, soft French Flannel, with semi-fitted back. It is of desirable length, stylish cut and very dressy. The sailor collar and sleeves are bordered with a band of good quality satin, paralleled with a row of silk braid. Can be furnished in gray figured patterns only. Give bust measure, when ordering. **Price \$1.09.**

1463.—Kimono of fine Cotton Crêpe with square yoke, front and back; sleeves, collarless neck and fronts bordered with wide bands of satin to harmonize. The designs are very pretty in Japanese floral effects, which can be furnished with blue, pink or lavender prevailing. Give bust measure and color desired, when ordering. **Price \$1.09.**

1464.—Dressing Sacque of Wool Ripple Eiderdown; semi-fitted back and loose fronts closing with two silk frogs. Puritan collar, sleeves and all edges finished with shell stitching. Colors: red, gray or blue. Give bust measure and color desired, when ordering. **Price 98 cents.**

1465.—Dressing Sacque of fine German Flannel with pointed collar and turn-back cuffs; edges bound in satteen to match four-in-hand tie. The back is gathered at the waist line and a belt is supplied. A house garment that is both comfortable and dressy. Colors: blue or lavender ground with charming design of small flowers in delicate shades. Give bust measure and color desired, when ordering. **Price 98 cents.**

1466.—Kimono of fine Cotton Crêpe, with square yoke back and front, to which full straight gores are gathered. Wide satin bands trim the fronts and border the neck and sleeves. The designs are very pretty in Japanese floral effects, which can be furnished with blue or lavender predominating. Give bust measure and color desired, when ordering. **Price \$2.15.**

1467.—Bath or Lounging Robe of an unusually fine grade of heavy German Flannel in an exquisite floral pattern. At the back, six deep tucks give extra fullness, making the robe graceful hanging and of generous width. The usual girdle with tassels is added. Colors: gray or pink ground with floral effects. Give bust measure and color desired, when ordering. **Price \$2.48.**

1468.—Bath or Lounging Robe of very fine quality Wool Ripple Eiderdown, trimmed on collar, sleeves and pockets with heavy satin ribbon. The back is semi-fitted and the straight fronts close with silk frog and ribbon bow. Made long, with good sweep and provided with tassel-end girdle. Colors: red, gray or blue. Give bust measure and color desired, when ordering. **Price \$3.98.**

The garments shown on this page are **READY-MADE** and can be furnished only as illustrated and described. We cannot make any alterations in these garments, nor can we send samples of the materials.



1501.—Handkerchief of fine Lawn; hemstitched border; wide Val. lace edge. 11 cts. each; three assorted designs, 29 cts.

1502.—Handkerchief of sheer India Lawn; deep shadow embroidery border. 25 cts. each; three assorted designs, 69 cts.

1503.—Handkerchief of Persian Lawn; fancy border of shadow embroidery. 16 cts. each; three assorted designs, 45 cts.

1504.—Handkerchief of fine Lawn with corners ornamented with veining and embroidery in a fanciful design; Val. lace edge. 15 cts. each; three assorted designs, 40 cts.

1505.—Handkerchief with Irish Linen center and hemstitched embroidered border. Pointed edge, frilled with French Val. lace. 25 cts. each; three assorted designs, 69 cts.

1506.—Handkerchief of sheer Persian Lawn with scalloped edge embroidered in English daisies, floral, or shadow patterns. 19 cts. each; three assorted designs, 54 cts.

1507.—Handkerchief with center of Irish Linen and open-work embroidery border; pointed edge frilled with fine Val. lace. 25 cts. each; three assorted designs, 69 cts.

1508.—Handkerchief of fine Cambric with embroidered half wreath and initial in corner. 7 cts. each; 40 cts. per half doz.; 79 cts. per doz.

1508P.—Same handkerchief without wreath or initial. 5 cts. each; 58 cts. per doz.

1509.—Handkerchief of fine Lawn with fancy Persian Lawn edge finished with narrow hemstitched edge. 10 cts. each; three assorted designs, 25 cts.

1510.—Handkerchief of India Lawn with scalloped border handsomely embellished with shadow and raised embroidery. 13 cts. each; three assorted designs, 35 cts.

1511.—Handkerchief of fine Irish Linen with narrow hemstitched edge, and hand embroidered wreath and initial in corner. 19 cts. each; \$1.12 per half doz.; \$2.20 per doz.

1511P.—Same handkerchief without wreath or initial. 15 cts. each; 89 cts. per half doz.; \$1.74 per doz.

1512.—Handkerchief of fine Lawn; double hemstitched border; embroidered block. 8 cts. each; three assorted designs, 22 cts.

1513.—Handkerchief of good quality Cambric with narrow and wide satin striped border. 5 cts. each; 58 cts. per doz.

1514.—Handkerchief of real Irish Linen, with embroidered floral wreath and initial in corner. 13 cts. each; 75 cts. per half doz.; \$1.44 per doz.

1514P.—Same handkerchief without wreath or initial. 11 cts. each; 64 cts. per half doz.; \$1.24 per doz.

1515.—Handkerchief of cross-bar India Lawn with narrow stripes forming a fancy border. 5 cts. each; 58 cts. per doz.

1516.—Handkerchief of fine Irish cross-bar Linen, with stripes in two widths forming the border, and narrow hemstitched edge. 15 cts. each; three for 42 cts.

1517.—Handkerchief of good quality Linen with embroidered block initial in the corner. 11 cts. each; 64 cts. per half doz.; \$1.24 per doz.

1517P.—Same handkerchief without initial. 9 cts. each; 52 cts. per half doz.; \$1.00 per doz.

1518.—Handkerchief of Cambric with fancy drawn-work stripes. 5 cts. each; 58 cts. per doz.

1518P.—Handkerchief of extra fine quality India Lawn, same style as 1517 but without initial. Exceptional value. 8 cts. each; 43 cts. per half doz.; 84 cts. per doz.

INITIALS: Initial handkerchiefs can be had with any letter of the alphabet except I, O, Q, U, V, X, Y, and Z.



1550.—Pelerine of Sable Coney with fur on both sides, trimmed with tails and silk cord ornaments; chain for fastening. For Muff to match, see No. 1565, page 56. **Price \$2.25.**

1551.—Scarf of excellent quality River Mink; collar lined with satin. Long double ends formed of entire River Mink skins, in what is known as animal skin effect, fancied with paws and full glossy tails. Mink head ornaments. **Price \$7.50.** For Muff to match, see No. 1559, page 56, or No. 1584, page 57.

1552.—Scarf of fine quality Sable Mink in throw over effect; can also be worn similar to Nos. 1553 and 1555; fine satin lining. This soft, rich brown fur is much favored this season. **Price \$6.95.** For Muff to match, see No. 1552X.

1552X.—Muff of fine quality Sable Mink with lining of a superior grade of satin. This superior muff is shaped in the latest Empire style, and its fashionable appearance and excellent quality make it a splendid selection for the woman who desires a moderate priced muff. **Price \$7.95.** For Scarf to match, see No. 1552.

1553.—Scarf of good quality imitation Ermine Fur, trimmed with clusters of tails and lined with white satin. A pleasing model for dressy occasions. **Price \$3.95.** For Muff to match, see No. 1575, page 56.

1554.—Pelerine of Sable Coney, in broad-shouldered effect; extra long double fur ends of natural animal skins finished with eight tails. Ornamental heads are employed as a finish. **Price \$4.95.** For Muff to match, see No. 1565, page 56.

1555.—Scarf of genuine Black Lynx, Leipzig dye. Can also be worn crossed over the shoulder. A fashionable, high grade fur with long silky hair, very rich in appearance. Fine satin lining. **Price \$11.50.** For Muff to match, see No. 1556.

1556.—Muff of genuine Black Lynx, to match Scarf No. 1555, made in the latest Pillow style, and of generous size. Satin lining of excellent grade. This beautiful and luxurious fur shows to particular advantage in a muff, and we recommend it for its fine appearance. **Price \$13.50.**

1557.—Scarf of Japanese or Eastern Mink, with double fur ends consisting of four natural Japanese Mink skins, elaborated with tails and claws. The collar is lined with brocaded satin and finished with heads. A rich looking neck-piece in the very best taste. **Price \$11.95.** For Muff to match, see No. 1558.

1558.—Muff of Japanese or Eastern Mink to match Scarf No. 1557, or any of our Japanese or Eastern Mink neck-pieces. Made in the fashionable Pillow style, and lined with fine satin. The beauty of this popular fur lies in the exquisite coloring of the natural dark stripes. There are five stripes in this handsome muff, making it exceptionally desirable. **Price \$13.50.**

The Furrs shown on this page can be furnished only as illustrated and described. We cannot make any alterations in them, nor can we send samples.



1559.—Muff of good quality River Mink, in Empire style, to match any of our River Mink neck pieces. Lined with satin.

Price \$4.50.

1560.—Scarf or "Throw" of glossy River Mink in fashionable length; lined with satin.

Price \$4.25.

1561.—Cravat of superior quality River Mink, in the latest "Mayfair" style, lined throughout with satin. Stylish pointed wing ends and ornamental neck head.

Price \$4.25.

1562.—Tie of good quality black Caracul Fur with loop or slide and pointed ends. Fancy satin lining.

Price \$1.95.

1563.—Tie like illustration No. 1562, made of genuine Siberian Gray Squirrel.

Price \$3.35.

1564.—Tie like illustration No. 1562, made of a superior quality of Japanese or Eastern Mink.

Price \$4.75.

1565.—Muff of Sable Coney in Empire effect to match any of our Sable Coney neck pieces; good satin lining.

Price \$2.75.

1566.—Scarf of Sable Coney, satin lined.

Price \$2.50.

1567.—Tie of genuine Siberian Gray Squirrel, with overlapping tabs; head and silk cord ornaments; satin lining.

Price \$5.95.

For Muff to match, see No. 1576, page 57.

1568.—Tie like illustration No. 1567, made of Genuine River Mink.

For Muff to match, see No. 1559, page 56, or No. 1584, page 57.

1569.—Tie like illustration No. 1567, made of Japanese or Eastern Mink in a beautiful, rich brown shade.

Price \$8.75.

1570.—Tie of River Mink with wide, pointed ends drawn under side or loop and finished with head.

Price \$2.35.

1571.—Pelerine or scarf of fine quality rich brown Isabella Opossum, fur on both sides; very long, ending in six beautiful tails. Handsome silk cord ornaments with chenille tassels, and silk girdle cord with two fur tails for adjustment.

Price \$9.95.

1572.—Boa of choice brown Isabella Fox, soft and fluffy; fur on both sides; handsome brush tails and paws.

Price \$5.75.

1573.—Muff of fine brown Isabella Fox, to match Boa No. 1572; rich and glossy in appearance, shaped in the graceful Pillow style; fine satin lining.

Price \$9.50.

1574.—Scarf or "Throw" of imitation Ermine Fur, trimmed with clusters of tails. The rounded ends are uniquely gathered in semi-circles of the same fur, producing a most attractive effect. Excellent white satin lining.

Price \$4.95.

1575.—Muff of imitation Ermine Fur in the popular Empire shape, trimmed with tails to match either of our Ermine neck pieces. White satin lining.

Price \$4.95.

The Furs shown on this page can be furnished only as illustrated and described.

We cannot make any alterations in them, nor can we send samples.



1576.—Muff of genuine Siberian Squirrel, in a rich gray shade, to match any of our Squirrel neck pieces. Popular Empire shape, with good satin lining and wrist cord. **Price \$6.25.**

1577.—Scarf or "Throw" of genuine Siberian Gray Squirrel, lined with fine quality satin. **Price \$4.50.**
For Muff to match, see No. 1576.

1578.—Scarf or Neck Piece of Sable Coney, with triple fur ends finished with tails. An ornamental head is utilized at the throat. **Price \$2.95.**
For Muff to match, see No. 1565, page 56.

1579.—Muff of genuine Persian Paw, shaped according to the most recent Empire vogue and lined with satin. The beautiful moiré effect of the Persian Paw in both the scarf and muff, closely resembles the expensive Broadtail Persian Lamb. **Price \$7.25.**

1580.—Scarf or "Throw" of a fine grade of genuine Persian Paw, with wide, pointed ends that may be tied in an Ascot or simply crossed, as illustrated: beautiful moiré effect. **Price \$6.25.**
For Muff to match, see No. 1579.

1581.—Collarette or Neck Piece of Japanese or Eastern Mink, fur on both sides; finished attractively with natural double animal skins, ending with full tails and claws. Ornamental heads are added. Excellent value in a first-class fur and a model that is always in style. **Price \$12.50.**
For Muff to match, see No. 1558, page 55.

1582.—Pelerine of Sable Coney, fur on both sides, finished with six full tails; girldle cord, ending in two tails, for fastening. **Price \$3.25.**
For Muff to match, see No. 1555, page 56.

1583.—Pelerine or Shoulder Piece of fine quality River Mink, showing the new usage of natural animal skins, the heads and tails being employed in a stylish arrangement at back of collar, similar to that shown in the front view of our illustration. Very dressy and warm. **Price \$12.50.**
For Muff to match, see No. 1559, page 56 or No. 1584, page 57.

1584.—Muff of fine River Mink, to match any of our neck pieces in same fur. Fashionable shape, trimmed with paws and fluffy tails at the lower edge, and ornamental heads at the top. **Price \$6.75.**

1585.—Pelerine or Shoulder Piece of brown Isabella Opossum; fur on both sides and finished with long, graceful ends. Six bushy tails and silk braid ornaments enhance the attractive appearance. **Price \$6.50.**
For Muff to match, see No. 1586.

1586.—Muff of Isabella Opossum in a lustrous brown, to correspond with any of our Isabella, Opossum scarfs, made in the approved Empire shape. Fine satin lining and wrist attachment. **Price \$4.50.**

The Furs shown on this page can be furnished only as illustrated and described. We cannot make any alterations in them, nor can we send samples.



SIZES OF LADIES' COATS—32 TO 44 BUST.

1601.—Ladies' Coat in fancy gray Plaid Mixture only. Double-breasted front, closing with buttons, bias back; fashionable pockets, and mannish notched collar. The garment is unlined and is made with Gibson point on the shoulders; side seams are slit at the bottom. Give bust measure, when ordering. **Price \$5.95.**

1602.—Ladies' Coat of Kersey in black or castor. The front is double-breasted, with buttons and button-holes, and the loose back exhibits a full length stitched strap down the center seam. Distinction is afforded by an oddly shaped collar simulated at the neck; fashionable flare cuffs, and ornamental pockets. The coat is unlined. Give bust measure and color desired, when ordering. **Price \$6.95.**

1603.—Ladies' Coat in black Kersey only. Double-breasted front and plain loose back. The neck is attractively finished with a garniture of velvet, edged with silk Hercules braid; stylish flare cuffs complete the sleeves, and flap pockets contribute a mannish air. The garment is unlined. The handsome tailored appearance and the extremely low price at which we offer this coat make it

one of our most popular models this season. Give bust measure, when ordering. **Price \$7.95.**

1604.—Ladies' Coat in black Broadcloth only. Single-breasted front, fastening with buttons and silk loops. The neck is ornamented in yoke suggestion with velvet and decorative braids. Shoulders are trimmed with tabs of the material in Gibson outline. The back, which is embellished with braid to correspond with the front, exhibits a full length cloth strap on the center seam. Lined throughout with imported black Venetian and interlined to the hips. Give bust measure, when ordering. **Price \$8.95.**

1605.—Ladies' Coat in black Thibet only. Dart tucks shape the top of the double-breasted front, and the plain loose back is finished with the center seam lapped and stitched. The elaborate neck completion is of velvet with fiber and soutache braids and the velvet cuffs and pocket flaps are similarly embellished. The garment is unlined. The distinctive style of this garment will recommend it to discriminating tastes. Give bust measure, when ordering. **Price \$9.45.**

The materials used in these **READY-MADE** coats will be found exactly as described. If you prefer to see a sample, we will send it, but delay can be avoided by ordering direct from this Catalogue.



SIZES OF LADIES' COATS—32 TO 44 BUST.

1606.—Ladies' Coat of good quality Kersey in black only. Both the double-breasted front and loose back are trimmed with full length straps of the material; fanciful braid-trimmed collar device, which includes a velvet insert; cuffs are finished with braid and velvet to correspond, and sleeves are obliquely tucked. A stylish touch is afforded by the use of Bolero strappings of the material, combined with inserts of velvet on both front and back. Yoke and sleeve lining of black imported Venetian. Give bust measure, when ordering. **Price \$9.95.**

1607.—Ladies' Coat of superior Kersey in black or castor. Broad straps of the material extend down both sides of the double-breasted front, and the full, loose back. The coat is distinguished by appliques of the material and soutache and silk fiber braid applied in Empire style. This treatment is also employed at the neck, and on the fashionable turn-back cuffs. Both front and back of the garment are trimmed exactly alike. Yoke and sleeve lining of imported Venetian. Give bust measure and color desired, when ordering. **Price \$9.95.**

1608.—Ladies' Coat of good quality Kersey in black only. The front is double-breasted, and the popular loose back is em-

ployed. A simulated collar of velvet and soutache braid outlined by silk Hercules braid uniquely applied in Maria Stuart design lends elegance to the garment; full plaited sleeves furnished with braid-trimmed velvet cuffs; yoke and sleeve lining of black imported Venetian. Give bust measure, when ordering. **Price \$9.95.**

1609.—Ladies' Coat of good quality Kersey or rough Cheviot in black only. A full loose model, with double-breasted front and plain back; silk fiber braid, soutache, and velvet ingeniously applied contribute a Van Dyck collar effect. The stylish sleeves are handsomely embellished with velvet and braid to harmonize with neck completion. Lined throughout with imported black Venetian. Give bust measure, when ordering. **Price \$10.50.**

1610.—Ladies' Coat of superior quality Kersey in black only. This stylish garment exhibits a double-breasted buttoned front and loose back. The handsome collar effect is attained by velvet in conjunction with braid scrolls, and the full velvet cuffs are trimmed with braid in a corresponding design. Hercules braid fancifully applied on the shoulders, front and back, gives an attractive finish. Lined throughout with good quality black satin. Give bust measure, when ordering. **Price \$10.95.**

The materials used in these READY-MADE coats will be found exactly as described. If you prefer to see a sample, we will send it, but delay can be avoided by ordering direct from this Catalogue.



SIZES OF LADIES' COATS—32 TO 44 BUST.

1611.—Ladies' Tourist Coat of Covert Cloth in tan only, with yoke and sleeve lining of satin to match. Double-breasted, with loose back; full-length tailor strappings of the material are exhibited on both front and back; mannish patch pockets; turn-back cuffs. Give bust measure, when ordering. **Price \$12.50.**

1612.—Ladies' Long Coat of good quality medium weight Broadcloth in black only. Lined throughout with black satin, and interlined to the hips. Half double-breasted effect, fastening with buttons, and silk cord loops; loose back. Silk Hercules braid and velvet simulate a collar, the braid extending down the front; full sleeves trimmed with braid. Give bust measure, when ordering. **Price \$12.50.**

1613.—Ladies' Overcoat of Montagnac, in black only; lined throughout with good black satin. A double row of stitching on the double-breasted front adds a pleasing finish; plain loose back; notched velvet collar; the coat sleeves are finished with Cavalier

cuffs; mannish flap pockets. The weight of the material makes this a particularly warm, serviceable coat. Give bust measure, when ordering. **Price \$13.95.**

1614.—Ladies' Coat of good quality Kersey in black only; lined throughout with black satin; the coat ripples fashionably in back; cord loops and buttons are employed for the closing. An elaborate collar effect is produced by means of velvet and braid trimming, and the stylish cuffs are trimmed to correspond. Give bust measure, when ordering. **Price \$14.50.**

1615.—Ladies' Coat in green and brown Plaid Mixture only; single-breasted front closes with hooks and eyes. Straps of the material ornamented with fancy buttons trim the front and back. Silk braid and inserts of leather-colored cloth elaborate the coat. Shoulders are trimmed with wide Hercules braid in simulated cape effect. Full ripple back. Give bust measure, when ordering. **Price \$14.75.**

The materials used in these **READY MADE** Coats will be found exactly as described. If you prefer to see a sample, we will send it, but delay can be avoided by ordering direct from this Catalogue.



SIZES OF LADIES' COATS—32 TO 44 BUST.

1616.—Ladies' Coat of good quality Kersey, in black only, lined throughout with black satin. Double-breasted front, closing with silk cord loops and buttons; and loose back with a full length strap of the material on the center seam. Rich shawl-collar of River Mink Fur; turn-back cuffs. An ideal garment for Winter wear. Give bust measure, when ordering. **Price \$14.95.**

1617.—Ladies' Coat of fine light weight Kersey, in black only, lined throughout with good black satin, and interlined. Fancy silk braid is applied down the full length of both front and back and extends under the arms in Bolero outline. The neck is edged with velvet, and a handsome decoration in Hercules braid and soutache on shoulders and cuffs affords a stylish finish. Give bust measure, when ordering. **Price \$16.50.**

1618.—Ladies' Pony Coat of imitation black Caracul Fur, lined with extra fine quality black satin. The coat is semi-fitting and the French front closes in single-breasted style; collarless neck is edged with black peau de soie and is ornamented with silk braid extend-

ing down the fronts and around the lower edge, which is slit at the seams; black soutache braid and stitching outline the seams in front and back. Sleeves are trimmed with braid to harmonize. Give bust measure, when ordering. **Price \$17.95.**

1619.—Ladies' Coat of fine Broadcloth, in black only, lined throughout with good black satin, and interlined to the hips. Half double-breasted front closing with cord loops and buttons; full ripple back; an elaborate device in velvet and braid finishes the neck and the fancy tucked sleeves. An extremely handsome and dressy garment. Give bust measure, when ordering. **Price \$17.50.**

1620.—Ladies' Coat of superior quality Broadcloth, in black only, lined throughout with fine black satin and interlined to the hips. Single-breasted fly closing; loose back. The collar and cuffs are trimmed with fine silk braid cleverly applied to resemble Persian Lamb. Full tucked sleeves. We recommend this model for its style and elegance. Give bust measure, when ordering. **Price \$17.50.**

The materials used in these READY-MADE coats will be found exactly as described. If you prefer to see a sample, we will send it, but delay can be avoided by ordering direct from this Catalogue.



SIZES OF LADIES' COATS

32 TO 44 BUST.

1621.—Ladies' Coat of fine quality, medium weight Broadcloth, in black only, lined throughout with good satin. Trimming consists of silk braid and ornaments applied as illustrated. Back is trimmed exactly like the front, and has a strap of the material extending down the center seam. The fashionable Mikado sleeve effect is produced by over-lapping tabs trimmed with rows of braid. Sleeves are tucked and finished with unique cuffs. Give bust measure, when ordering. **Price \$17.50.**

1622.—Ladies' Coat of superior Kersey, in black only, lined throughout with fine black satin. Single-breasted front, fastening with hooks and eyes; both the front and the full back are ornamented with silk braid and soutache applied in a novel scroll design, producing an Empire yoke effect. The fashionable cuffs are trimmed with braid to correspond. Give bust measure, when ordering. **Price \$19.75.**

1623.—Ladies' Coat of fine imported Broadcloth, in black only, lined throughout with black satin. The closing is effected by

means of cord loops and buttons. Inverted plaits provide fulness in both front and back. Fashionable Gibson shoulders; garniture of silk Hercules braid; velvet and tassels add an air of elegance. Sleeves are trimmed as illustrated. Give bust measure when ordering. **Price \$19.75.**

1624.—Ladies' Long Coat of medium weight, superior quality Broadcloth, in black only, lined throughout with fine black satin. Half double-breasted, closing with loops and buttons; the back has the fashionable full ripple effect. Handsome embellishment of silk braid which is applied around the neck and on the tucked sleeves. Bolero straps of this trimming are also introduced producing the broad Mikado outline. Give bust measure, when ordering. **Price \$19.75.**

1625.—Ladies' Empire Coat of fine imported Broadcloth in black or brown, lined throughout with good quality satin and interlined to the hips. Trimmings on the shoulders of silk braid and fine buttons applied over bands of velvet. This design is also carried out at the neck and on the new and attractive sleeves. Strappings form an Empire effect, and long graceful plaits contribute a desirable fulness. The back is trimmed exactly like the front. Give bust measure and color desired, when ordering. **Price \$21.50.**

The materials used in these READY-MADE coats will be found exactly as described. If you prefer to see a sample, we will send it, but delay can be avoided by ordering direct from this Catalogue.



SIZES OF LADIES' COATS

32 TO 44 BUST.

1626.—Ladies' Coat of good quality Kersey, in black only, lined with Suslicka Fur; this is an Eastern fur closely resembling Mink. Sleeves lined with Venetian. Full loose model 50 inches long; front closes with loops and buttons. Shawl-collar of River Mink; turn-back cloth cuffs. Six rows of tailored-stitching finish the bottom of the garment. Give bust measure. Price \$22.50.

1627.—Ladies' Coat of fine imitation black Caracul Fur, lined throughout with good quality black satin. Double-breasted front closing with ornamental buttons; back is made with generous fulness. Fancy silk braid extending around the neck simulates a shawl-collar and the fashionable cuffs are trimmed to correspond. This beautiful coat is 48 inches long and is modeled after the latest Parisian designs. Give bust measure. Price \$24.75.

1628.—Ladies' Pony Coat of fine lustrous imitation Broadtail Fur, lined throughout with handsome black satin. Semi-fitted back and loose front closing with attractive buttons. Silk braid applied to resemble Persian Lamb, and outlined with Hercules braid simulates a collar, and the stylish turn-back cuffs are trimmed in the same manner. This jaunty coat is particularly appropriate for dress occasions. Give bust measure. Price \$24.75.

1629.—Ladies' Coat of fine quality Broadcloth, in black only, lined throughout with gray and white Squirrel Fur; sleeves finished with turn-back cuffs and lined with Venetian and interlined. Full loose model 50 inches long. Front closes with loops and buttons; stylish shawl-collar of Persian Lamb. This is a very desirable garment on account of its warmth and handsome appearance. Give bust measure. Price \$29.50.

1630.—Ladies' Coat of fine imported Broadcloth, in black only, handsomely lined with good quality gray and white Squirrel Fur. Turn-back cuffs. The sleeves, which are lined with black satin and interlined, are trimmed with silk loops and buttons; full loose model 50 inches long. Front closes with silk loops and buttons; fashionable shawl-collar of Sable Squirrel. The many admirable features of this stylish garment will recommend it to women of taste and refinement. Give bust measure. Price \$34.75.

The materials used in these READY-MADE coats will be found exactly as described. If you prefer to see a sample, we will send it, but delay can be avoided by ordering direct from this Catalogue.



The garments shown on this page are suitable for Misses or for Women of short or medium stature.

SIZES OF MISSES' COATS

32 TO 36 BUST

1675.—Misses' Coat of fancy Wool Mixture in brown striped effect only. The garment is unlined, and is made with double-breasted front, and a plain loose back; full coat sleeves with fashionable turn-back cuffs; fancy collar edged with brown velvet and soutache braid; two flap pockets. Give bust measure, when ordering. **Price \$5.45.**

1676.—Misses' Prince Chap Coat of plain black or blue Cheviot, or Wool Mixture in gray broken-plaid effect. The coat is double-breasted, and is made with the semi-fitted back characteristic of the Prince Chap model. Plaits are allowed at the sides for fullness; a notched velvet collar and three pockets with buttoned flaps contribute a stylish finish. The garment is unlined. Give bust measure and color desired, when ordering. **Price \$6.25.**

1677.—Misses' Top Coat in superior quality, all-wool, invisible gray and green Plaid Mixture only, with yoke lining of same material; double-breasted front; plain loose back; collar and cuffs are of velvet elaborately trimmed with cloth straps, velvet piping

and fancy buttons; three flap pockets. Give bust measure, when ordering. **Price \$6.50.**

1678.—Misses' Semi-Fitted Coat of fine quality all-wool Cheviot, in black, blue or brown, with yoke lining of the same material. Single-breasted front with fly closing, and plain half-fitted back. Notched velvet collar to match; flap pockets. This model is strictly man-tailored, the seams being lapped and stitched. The fine material and excellent style make it a particularly desirable garment. Give bust measure and color desired, when ordering. **Price \$7.95.**

1679.—Misses' Coat of fine lustrous Kersey in black, blue or brown. The garment is loose-fitting, closing in double-breasted fashion with buttons and loops; full coat sleeves. The neck is elaborately trimmed on both front and back with silk Hercules braid, combined with soutache braid and velvet, the cuffs and pocket flaps being trimmed with braid to correspond; the coat is unlined. Give bust measure and color desired, when ordering. **Price \$9.50.**

The materials used in these READY-MADE coats will be found exactly as described. If you prefer to see a sample, we will send it, but delay can be avoided by ordering direct from this Catalogue.



The garments shown on this page are suitable for Misses or for Women of short or medium stature.

SIZES OF MISSES' COATS

32 TO 36 BUST

1680.—Misses' Top Coat of fine all-wool Cheviot in black, blue or brown. Coat is loose fitting, with double-breasted front, and plain back with a center seam, opened at the bottom. Velvet inlaid collar and Empire strappings give a stylish finish. Plain coat sleeves and patch pockets; no lining. A handsome serviceable garment. Give bust measure and color desired, when ordering.

Price \$9.95.

1681.—Misses' Prince Chap Coat of either gray Herringbone Worsted, or black Kersey. Double-breasted front with semi-fitted coat back. Straps, fancied with velvet, trim the back, which is made with two side-plaits for fulness. Notched collar inlaid with velvet and jaunty flap pockets; no lining. The style and finish of this fashionable model make it appropriate for general wear. Give bust measure and color desired, when ordering.

Price \$9.95.

1682.—Misses' Gibson Coat of brown and black Wool Mixture or plain black Kersey. Double-breasted front and half-fitted coat back. Unique latticed strappings piped with velvet emphasize the fashionable broad shoulders; the velvet collar is manly notched, and the straps in back and the pocket flaps are trimmed with buttons;

yoke lining of the same material. Distinctive style and superior workmanship make this a very dressy garment. Give bust measure and color desired, when ordering.

Price \$10.95.

1683.—Misses' Coat of fine quality Broadcloth in black only. Loose fitting plain back and double-breasted front fastening with silk buttons and cord loops; coat sleeves with turn-back cuffs. Van Dyck of velvet outlined with silk soutache and Hercules braid provide a stylish neck completion. The coat is lined throughout with black satin, and is also interlined to the hips. Give bust measure, when ordering.

Price \$11.95.

1684.—Misses' Coat of fine imported Broadcloth in blue, tan, red or black. The garment is loose fitting and has double-breasted front. The broad Gibson effect is produced by strappings which extend down the full length of both front and back. Further elaboration is provided by bands of Hercules braid and small fancy buttons. The neck is uniquely finished with velvet and braid, and the cuffs are trimmed to correspond. Lined throughout with good quality satin, and also interlined to the waist. Give bust measure and color desired, when ordering.

Price \$14.50.

The materials used in these READY-MADE coats will be found exactly as described. If you prefer to see a sample, we will send it, but delay can be avoided by ordering direct from this Catalogue.



SIZES AND CHEST MEASURES—6 yrs., 28 in.—8 yrs., 29 in.—10 yrs., 31 in.—12 yrs., 33 in.—14 yrs., 35 in.

1701.—Girls' Box Coat of Melton in red, blue or brown, trimmed with straps of a contrasting shade, and buttons; double-breasted front. The coat is unlined. Give age, chest measure and color desired. **Price \$4.75.**

1702.—Girls' Military Coat of Cheviot in blue or brown; lining of scarlet flannel; gilt buttons. Give age, chest measure and color desired. **Price \$4.95.**

1703.—Girls' Coat in brown Scotch Plaid Wool Mixture only. Double-breasted; soutache braid applied over crimson cloth, and buttons decorate the collar and cuffs; unlined. Give age and chest measure. **Price \$5.95.**

1704.—Girls' Coat in fancy gray Cheviot Mixture only. Gibson strappings piped with reseda-green velvet; back is plaited. The collar is also trimmed with velvet; Art Nouveau buttons. The coat is unlined. Give age and chest measure. **Price \$5.95.**

1705.—Girls' Coat in good quality heavy gray Cheviot Mixture

only, with trimmings of reseda-green velvet and fancy braid. Bolero strappings piped with velvet; inverted plait at the back. The coat is unlined. Give age and chest measure. **Price \$6.25.**

1706.—Girls' Box Coat of high grade Cheviot in red, blue or brown; double-breasted front, velvet collar. Coat is lined to the waist with scarlet flannel. Give age, chest measure and color desired. **Price \$6.50.**

1707.—Girls' Top Coat of fine quality all-wool Cheviot in red, blue, green, brown or black. Buttons and tailor-strappings on front and back. Collar and cuffs are inlaid with velvet. No lining. Give age, chest measure and color desired. **Price \$6.75.**

1708.—Girls' Coat of handsome gray Astrakhan cloth, lined throughout with good quality sateen, and interlined. Gilt Navy buttons are employed for the double-breasted closing, and the collar is faced with black velvet. Give age and chest measure. **Price \$6.95.**

The materials used in these **READY-MADE** coats will be found exactly as described. If you prefer to see a sample, we will send it, but delay can be avoided by ordering direct from this Catalogue.



SIZES AND CHEST MEASURES—6 yrs., 28 in.—8 yrs., 29 in.—10 yrs., 31 in.—12 yrs., 33 in.—14 yrs., 35 in.

1709.—Girls' Coat of all-wool Cheviot in red, blue, green, brown or black. Double-breasted front and loose back, trimmed with straps of the material, buttons and pipings of velvet. The collar and cuffs are trimmed with velvet. Unlined. Give age, chest measure and color desired. **Price \$7.50.**

1710.—Girls' Coat in silver-gray Cheviot only. Double-breasted front and loose back elaborated with straps piped with black velvet to match cuffs; black velvet collar; no lining. **Price \$7.50.**

1711.—Girls' Coat of all-wool Cheviot in red, blue, or brown; double-breasted front and plain loose back. Collar and cuffs of contrasting cloth, silk braid and gilt buttons. Yoke lining of the material. Give age, chest measure and color. **Price \$7.75.**

1712.—Girls' Cossack Coat of superior all-wool Cheviot in red, blue, green or brown. Double-breasted front fastened with silk frogs; loose back elaborately trimmed with straps of the material. Rich imitation broadtail fur collar. Unlined. Give age, chest measure and color desired. **Price \$8.50.**

1713.—Girls' Coat of mixed Cheviot in green or brown plaid. Double-breasted front; plaited loose back; collar and cuffs trimmed with straps. Yoke lining of material. State color. **Price \$8.75.**

1714.—Girls' Coat of extra fine quality Kersey in red, blue, brown, green or black. Double-breasted front, Bolero strappings with inserts of velvet ornament the front and also the loose back; the collar, cuffs and pockets being trimmed to correspond; no lining. Give age, chest measure and color desired. **Price \$9.50.**

1715.—Girls' Coat of high grade, all-wool Cheviot in red, blue or brown. Double-breasted front; collar finished with an edging of velvet; yoke lining of the material. Give age, chest measure and color desired. **Price \$9.95.**

1716.—Girls' Overcoat of warm, fleecy Chinchilla Cloth in gray or navy blue. Double-breasted; plain loose back; velvet collar. The coat is lined throughout with gray flannel; satin lined sleeves. Give age, chest measure and color desired. **Price \$9.95.**

The materials used in these READY-MADE coats will be found exactly as described. If you prefer to see a sample, we will send it, but delay can be avoided by ordering direct from this Catalogue.



SIZES AND CHEST MEASURES—6 yrs., 28 in.—8 yrs., 29 in.—10 yrs., 31 in.—12 yrs., 33 in.—14 yrs., 35 in.

1731.—Girls' Dress of black and white Shepherd Check, trimmed with red silk cord and buttons; closes invisibly in back; red soutache trimming and red silk tie; kilt skirt. Lined throughout. Give age and chest, when ordering. **Price \$1.98.**

1732.—Girls' Two-Piece Sailor Suit of black and white Shepherd Check, trimmed with red braid, sailor tie and appropriate emblems; plaited skirt. Give age and chest, when ordering. **Price \$2.48.**

1733.—Girls' Peter Pan Dress of Cashmere, in red, blue or brown; silk braid trimming; silk tie; box-plaited front, and tucked back; plaited skirt. Lined throughout. Give age, chest and color desired, when ordering. **Price \$2.98.**

1734.—Girls' Dress of Cashmere, in red, blue or brown, with trimmings of buttons and plaid silk piping; tucked V-shaped yoke in front. The gathered skirt has a triple box-plait in front; dress is lined throughout. Give age, chest and color desired, when ordering. **Price \$3.25.**

1735.—Girls' Jumper Dress of all-wool Cheviot Serge, in red or blue; silk braid and gilt buttons. A separate waist of tucked

white cotton poplin is furnished. The dress is plaited in front, and tucked at the back. Circular sleeve caps are used; the skirt has a triple box-plait in front and is gathered to the waist. Dress is half-lined. Give age, chest and color desired. **Price \$3.75.**

1736.—Girls' Dress of all-wool Cheviot Serge in blue or brown with trimmings of red cloth and black silk soutache; a silk embroidered shield is mounted on the lining of the waist, and the back is tucked to match the sleeves. The plaited skirt is unlined. Give age, chest and color desired, when ordering. **Price \$4.48.**

1737.—Girls' Dress of all-wool Cheviot Serge in red, blue or brown; silk soutache of contrasting color ornaments the shoulders, cuffs and collar. The waist has a plaited front, and the back which is also plaited, closes invisibly; the kilt skirt is attached. Dress is half-lined. Give age, chest and color desired. **Price \$4.75.**

1738.—Girls' Two-Piece Sailor Suit of fine all-wool Serge in navy blue, red or brown, trimmed with white braid; silk embroidered devices on shield, sleeve and sailor collar; the plaited skirt is unlined. Give age, chest and color desired. **Price \$5.48.**

The materials used in these READY-MADE dresses will be found exactly as described. If you prefer to see a sample, we will send it, but delay can be avoided by ordering direct from this Catalogue.

Use this Order Blank only for the Ready-Made Goods

SHOWN ON PAGES 37 TO 68 INCLUSIVE.

(Order Blanks for our Made-to-Measure Garments will be found in the front of this Catalogue.)

Quantity	Style Number	Size (See Note below.)	ARTICLES WANTED	Color	Price	
					\$	cts.

NOTE: Give size, bust, waist, length or age as called for in the description of each article you order.

Name.....

Address.....

May we substitute if our stock of your selection is sold out?..... In case substitution is necessary, we will send you an article of the same or greater value without extra charge and **SUBJECT TO YOUR APPROVAL.**

POSTAGE AND EXPRESSAGE PREPAID.

We prepay postage and expressage to any part of the United States provided the full amount to pay for the desired goods accompanies the order; therefore, you need send us only the price of each article ordered as we will prepay transportation charges, no matter how large or how small your order. We do not pay express charges or return-money charges on goods shipped C. O. D.

BEFORE MAILING THIS ORDER GO OVER IT VERY CAREFULLY TO MAKE SURE THAT YOU HAVE GIVEN THE CORRECT STYLE NUMBERS, COLORS AND SIZES.

USE THIS ORDER BLANK ONLY FOR THE READY-MADE GOODS
SHOWN ON PAGES 37 TO 68 INCLUSIVE.

(Order Blanks for our Made-to-Measure Garments will be found in the front of this Catalogue.)

Do not write anything in this space.

National Cloak & Suit Company,

207 to 217 West 24th Street, New York City.

I send you this order with the understanding that if the goods sent me are not entirely satisfactory, I may return them in good condition within three days of their receipt, at your expense, and you will refund my money.

Name (Mrs. or Miss)		AMOUNT ENCLOSED,	
(Send Mail matter to this address.)		P. O. Order	\$.....
Town	Street	Express Order	\$.....
County	State	N. Y. Bank Draft	\$.....
Express Office	Express Co.	Cash	\$.....
(Send Express packages to this address.)		Stamp	\$.....

Please state in what publication you saw our advertisement. Some ladies fail to do this. Will you be kind enough to answer this question?

Have you ever ordered from us before?

POSTAGE AND EXPRESSAGE PREPAID.

We prepay postage and expressage to any part of the United States, provided the full amount to pay for the desired goods accompanies the order; therefore, you need send us only the price of each article ordered as we will prepay transportation charges, no matter how large or how small your order. We do not pay express charges or return-money charges on goods shipped C. O. D.

INSURED MAIL. Five Cents extra with each \$5.00 worth of goods ordered, to be sent by Mail, means that we will insure the safe delivery of the package to you. In the event of the goods being lost, it is only necessary for you to write us that they were not delivered to you, and have your Postmaster certify to your statement. We will then refill your order without extra charge.

Add 5 cents for goods costing up to \$5.00; 10 cents for goods costing from \$5.00 to \$10.00, and 5 cents for each additional \$5.00 worth. Write the word "INSURE" plainly on your order.

HOW TO SEND MONEY.

Remit either by Post Office Money Order, Express Money Order, New York Bank Draft, or Check, payable to "NATIONAL CLOAK & SUIT COMPANY, NEW YORK CITY."

We recommend either Post Office Money Orders or Express Money Orders, as they are absolutely safe and a convenient way to send money; moreover, in case of loss in the mails, you are protected.

It is not safe to send cash; but if you cannot remit in any other way, enclose the money in a strong envelope, seal it securely, and be sure to have it registered.

Always send an amount sufficient to cover the cost of your order; better send too much than too little.

All sums over ten cents in excess of your purchase will be promptly refunded after your order is filled.

OUR TERMS.

If you wish goods sent C. O. D., we require a deposit of at least one-third the amount of your order, in which case they will be sent C. O. D. by Express for the balance; but on such shipments the customer must pay the expressage and the Express Company's charge for sending the money to us. We will not ship C. O. D. without the required deposit. Goods sent C. O. D. must go by express as they cannot be mailed.

All orders for points outside of the United States must be fully paid for in advance.

FILL IN BOTH SIDES OF THIS ORDER BLANK IN INK.

Use this Order Blank only for the Ready-Made Goods

SHOWN ON PAGES 37 TO 68 INCLUSIVE.

(Order Blanks for our Made-to-Measure Garments will be found in the front of this Catalogue.)

Quantity	Style Number	Size (See Note below.)	ARTICLES WANTED	Color	Price	
					\$	cts.

NOTE: Give size, bust, waist, length or age as called for in the description of each article you order.

Name.....

Address.....

May we substitute if our stock of your selection is sold out?..... In case substitution is necessary, we will send you an article of the same or greater value without extra charge and **SUBJECT TO YOUR APPROVAL.**

POSTAGE AND EXPRESSAGE PREPAID.

We prepay postage and expressage to any part of the United States provided the full amount to pay for the desired goods accompanies the order; therefore, you need send us only the price of each article ordered as we will prepay transportation charges, no matter how large or how small your order. We do not pay express charges or return-money charges on goods shipped C. O. D.

BEFORE MAILING THIS ORDER GO OVER IT VERY CAREFULLY TO MAKE SURE THAT YOU HAVE GIVEN THE CORRECT STYLE NUMBERS, COLORS AND SIZES.

FILL IN BOTH SIDES OF THIS ORDER BLANK IN INK.

USE THIS ORDER BLANK ONLY FOR THE **READY-MADE GOODS**
SHOWN ON PAGES 37 TO 68 INCLUSIVE.

(Order Blanks for our Made-to-Measure Garments will be found in the front of this Catalogue.)

Do not write anything in this space.

National Cloak & Suit Company,

202 to 217 West 24th Street, New York City.

I send you this order with the understanding that if the goods sent me are not entirely satisfactory, I may return them in good condition within three days of their receipt, at your expense, and you will refund my money.

Name (<i>Mrs.</i> <i>or Miss</i>)		AMOUNT ENCLOSED.	
(Send Mail matter to this address.)		<i>P. O. Order</i>	\$
Town	Street	<i>Express Order</i>	\$
County	State	<i>N. Y. Bank Draft</i>	\$
Express Office	Express Co.	<i>Cash</i>	\$
(Send Express packages to this address.)		<i>Stamps</i>	\$

Please state in what publication you saw our advertisement. Some ladies fail to do this. Will you be kind enough to answer this question?

Have you ever ordered from us before?

**POSTAGE
AND
EXPRESSAGE
PREPAID.**

We prepay postage and expressage to any part of the United States, provided the full amount to pay for the desired goods accompanies the order; therefore, you need send us only the price of each article ordered as we will prepay transportation charges, no matter how large or how small your order. We do not pay express charges or return-money charges on goods shipped C. O. D.

INSURED MAIL. Five Cents extra with each \$5.00 worth of goods ordered, to be sent by Mail, means that we will insure the safe delivery of the package to you. In the event of the goods being lost, it is only necessary for you to write us that they were not delivered to you, and have your Postmaster certify to your statement. We will then refill your order without extra charge.

Add 5 cents for goods costing up to \$5.00; 10 cents for goods costing from \$5.00 to \$10.00, and 5 cents for each additional \$5.00 worth. Write the word "INSURE" plainly on your order.

**HOW TO
SEND
MONEY.**

Remit either by Post Office Money Order, Express Money Order, New York Bank Draft, or Check, payable to "NATIONAL CLOAK & SUIT COMPANY, NEW YORK CITY."

We recommend either Post Office Money Orders or Express Money Orders, as they are absolutely safe and a convenient way to send money; moreover, in case of loss in the mails, you are protected.

It is not safe to send cash; but if you cannot remit in any other way, enclose the money in a strong envelope, seal it securely, and be sure to have it registered.

Always send an amount sufficient to cover the cost of your order; better send too much than too little.

All sums over ten cents in excess of your purchase will be promptly refunded after your order is filled.

**OUR
TERMS.**

If you wish goods sent C. O. D., we require a deposit of at least one-third the amount of your order, in which case they will be sent C. O. D. by Express for the balance; but on such shipments the customer must pay the expressage and the Express Company's charge for sending the money to us. We will not ship C. O. D. without the required deposit. Goods sent C. O. D. must go by express as they cannot be mailed.

All orders for points outside of the United States must be fully paid for in advance.

FILL IN BOTH SIDES OF THIS ORDER BLANK IN INK.

MONEY SAVING PRICES

Our prices will save you from \$25.00 to \$50.00 a year on your wearing apparel. Buying our materials, linings and trimmings in enormous quantities enables us to give our customers remarkable values. Our very low prices are less than your local storekeeper would have to pay for similar goods. The more you buy from us, the more you save. Don't pay the usual extravagant retail prices when you can buy from us at wholesale.

EXPRESSAGE PREPAID.

One of the many advantages you have in dealing with us is that we prepay postage and expressage to any part of the United States. You need send us only the price of each article ordered, as we will prepay transportation charges no matter how large or how small your order. Remember, too, that if you are not entirely satisfied, the goods may be returned to us at once at our expense and the full amount paid us will be immediately refunded.

OUR NEW BUILDING

207, 209, 211, 213, 215 & 217 WEST 24TH ST.
NEW YORK CITY



WE OWN AND OCCUPY THIS ENTIRE BUILDING
LARGEST LADIES' OUTFITTING ESTABLISHMENT
IN THE WORLD