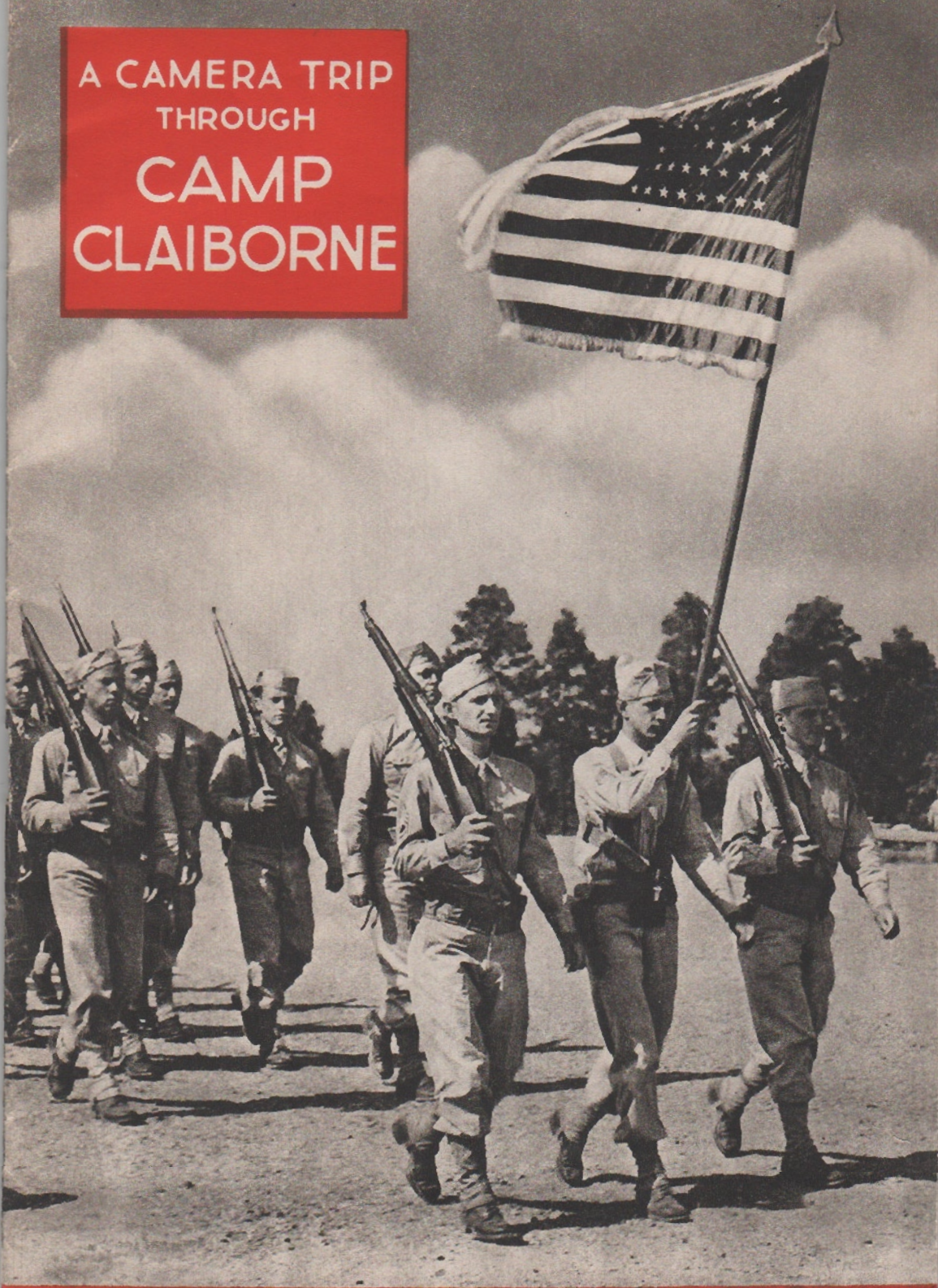
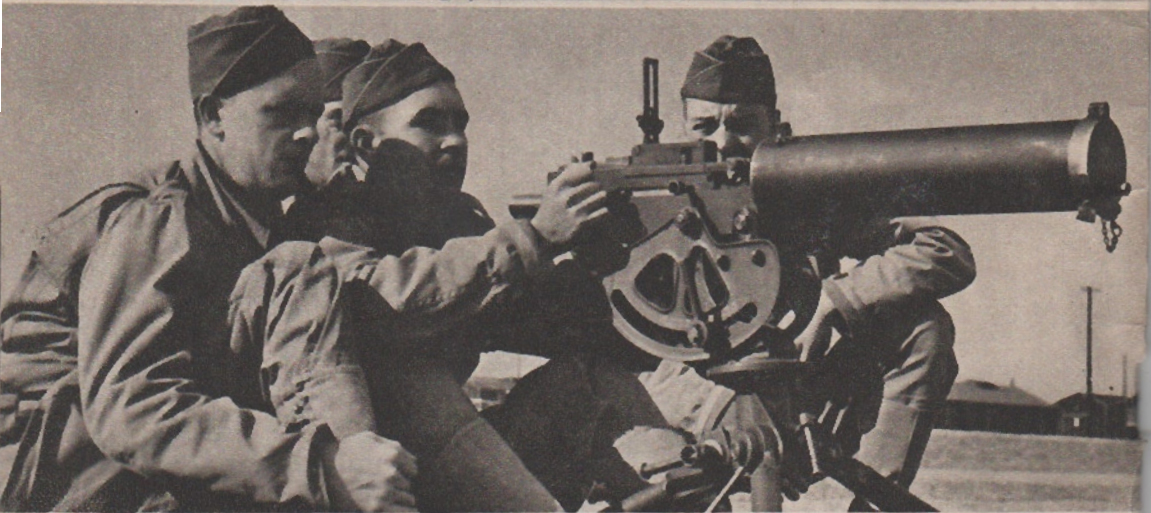


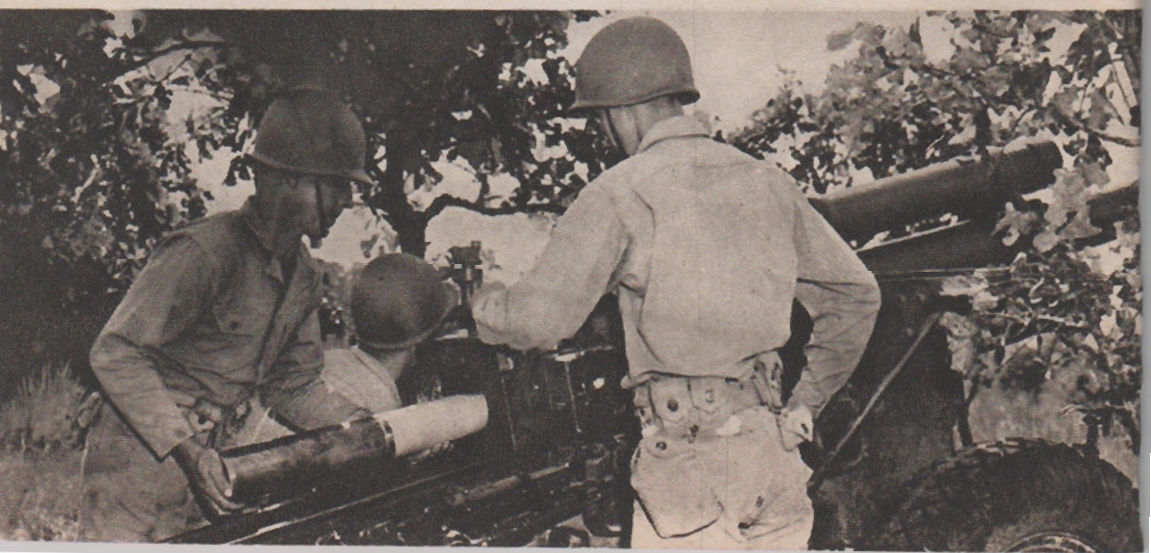
A CAMERA TRIP
THROUGH
CAMP
CLAIBORNE



A PICTURE BOOK OF THE CAMP AND ITS ACTIVITIES



LARGE AND SMALL CALIBRE GUNS ARE USED IN THE TRAINING AT CLAIBORNE.



HISTORY OF CAMP CLAIBORNE

CAMP CLAIBORNE, one of four large army camps in the central Louisiana area and located about 18 miles from Alexandria, was opened for use about January 15, 1941, construction having been begun the preceding fall. The camp was named for an illustrious early governor of Louisiana and disciple of Thomas Jefferson, William Charles Cole Claiborne.

The 1,245.71 acres on which the camp is situated is leased by the War Department, the government holding an option to renew the lease each year until June 30, 1966.

Constructed initially as a tent camp to provide quarters for approximately 30,000 officers and enlisted men, the camp was enlarged in the early spring of 1942 when what was originally known as "West Claiborne Annex," was constructed and made a portion of the main camp. During 1942 tents were replaced by "hutments." These structures are of two sizes — those for enlisted personnel housing 15 men, while smaller ones accommodate two officers.

Since the occupancy of the camp much has been accomplished in the manner of drainage, landscaping and paving of streets. This has much enhanced the beauty as well as the comfort of Claiborne.

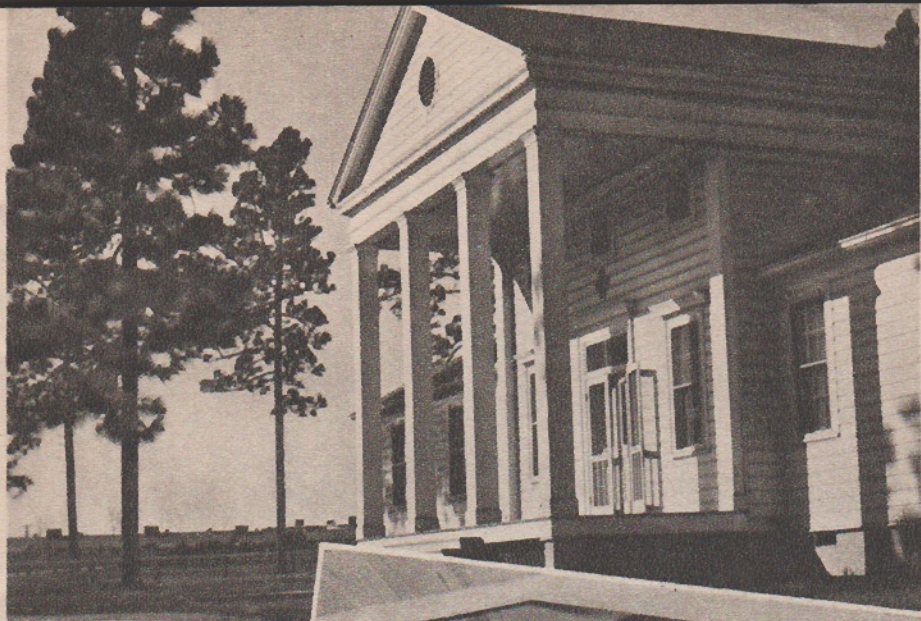
Camp Claiborne has its own post office, bank, numerous post exchanges, a chapel for practically every unit the size of a regiment, six well equipped theatres, three guest houses, five service clubs, a large sports arena and commodious bus station, while each company has its own day room. The facilities comprise water works, natural gas, electricity and sewerage.

The climate is admirably suited for year-around training as winters are mild and summers not excessively hot. Located near the historic Evangeline country, it is visited by many tourists throughout the year. The first camp commander was Major General Ellard A. Walsh (who also commanded the 34th infantry division), followed by Lieutenant Colonel R. E. Craig, Lieutenant Colonel A. V. Ednie, Colonel H. McE. Pendleton and Colonel Landon J. Lockett, who is the present commander.



Main entrance gate.

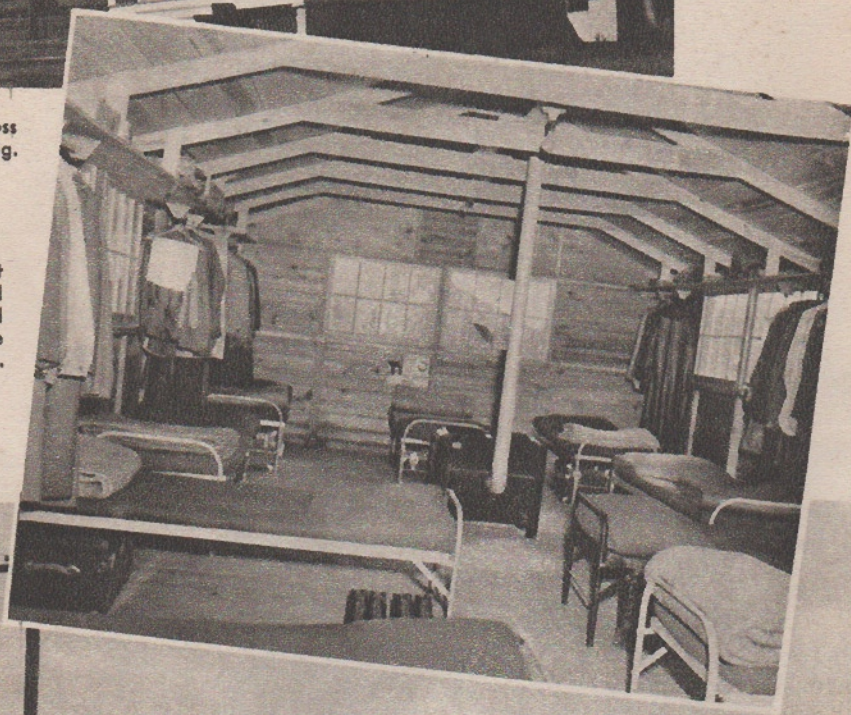




Entrance Red Cross
Administrative Building.

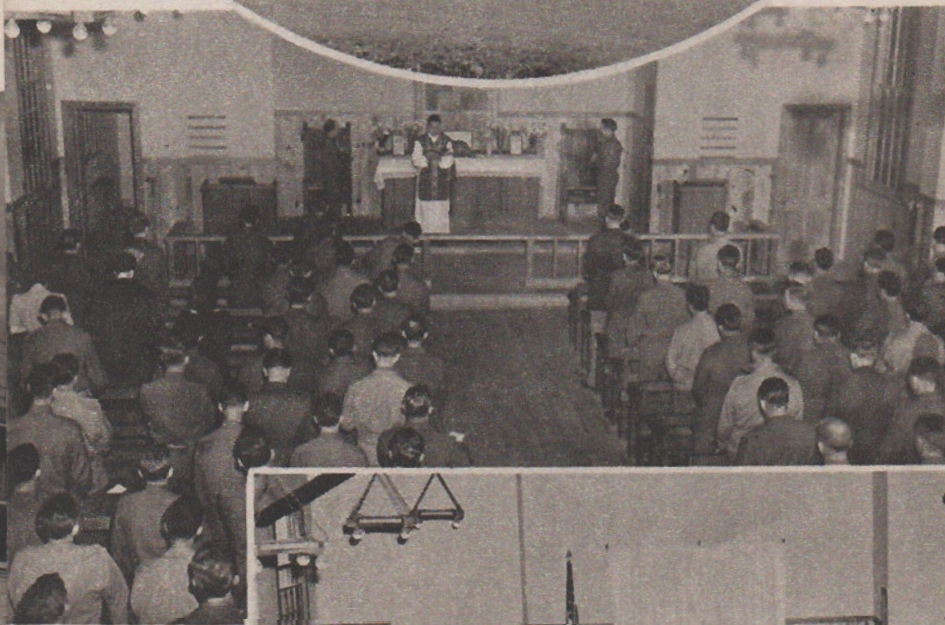
This is home. The first
principles of a good
soldier are neatness and
orderliness. Quarters are
always spic and span.

A customary scene on
any company street.

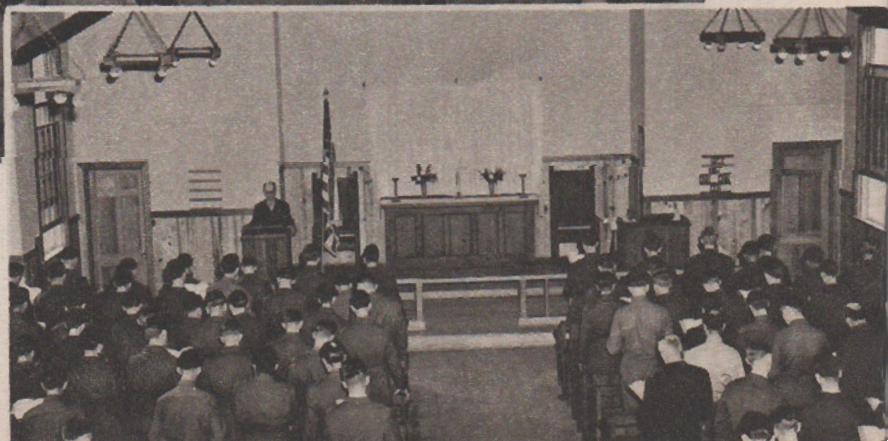




One of the seventeen chapels here which are devoted to either Catholic, Protestant or Jewish services. The attendance is extremely good.



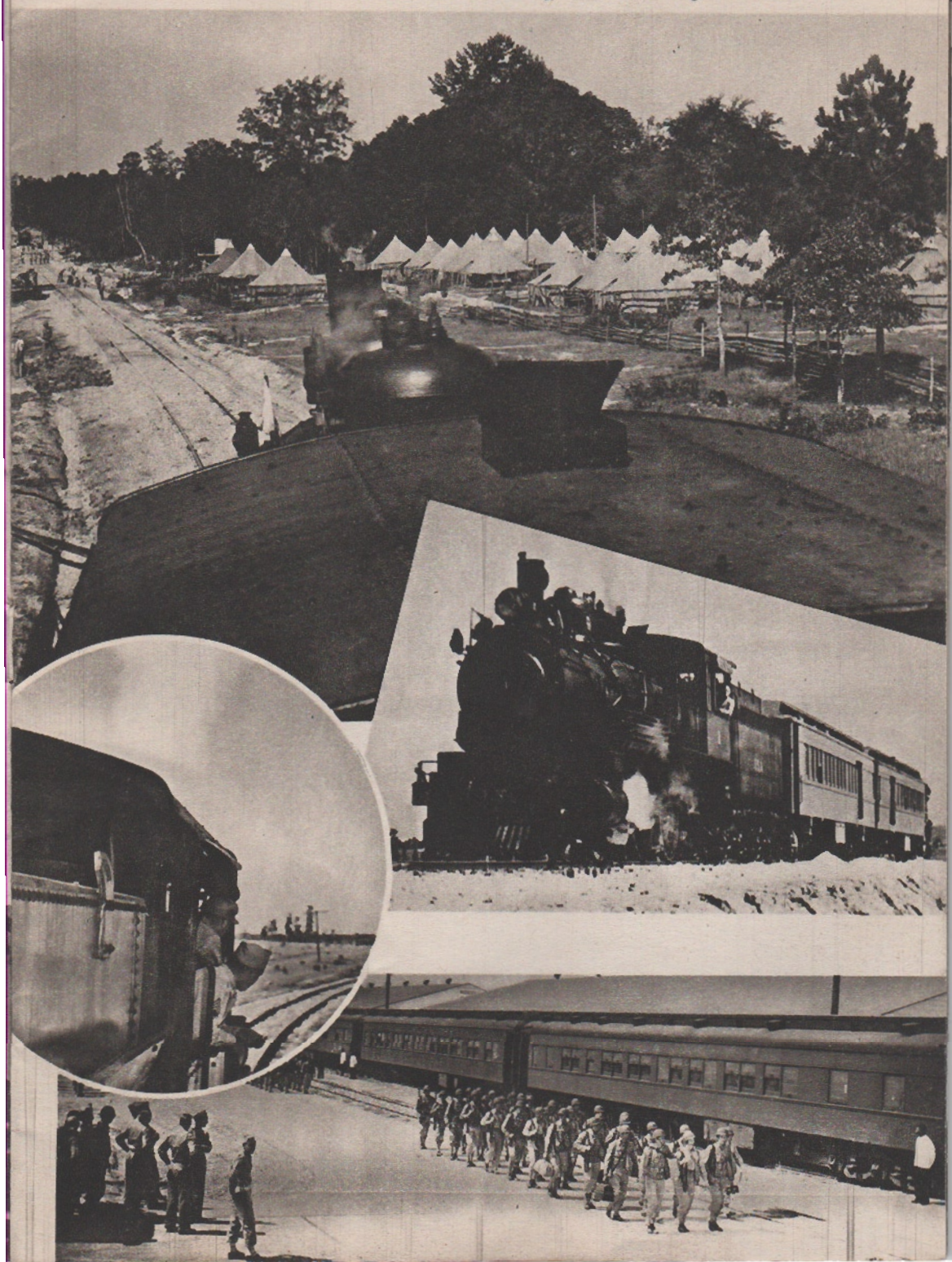
Catholic Mass.



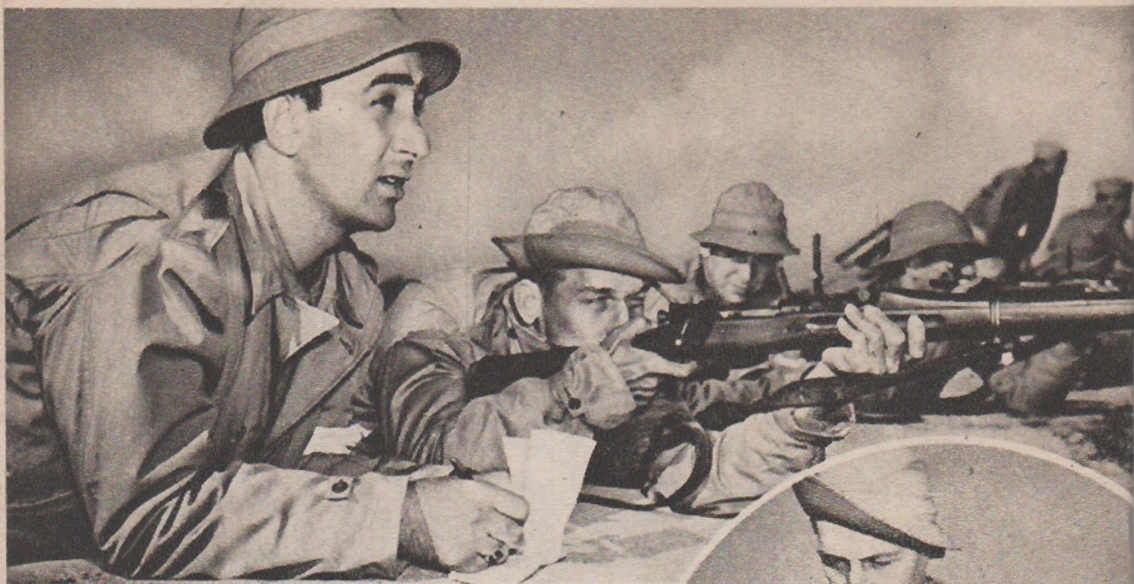
Protestant Services.

CLAIBORNE-POLK RAILROAD

is Government owned and operated by soldiers!



RIFLE RANGE PRACTICE



On the firing line.



Lamp black for better sighting.





Tank group.



An overnight bivouac.



Class in dynamite.



Mines are laid.



Camouflage is a vital art in today's training.

Camouflage tape which serves as a web for building the finished shelter.



Camouflage nets.





These new army trucks are miraculous in their performance.



A truck deliberately mired is towed out in approved fashion.



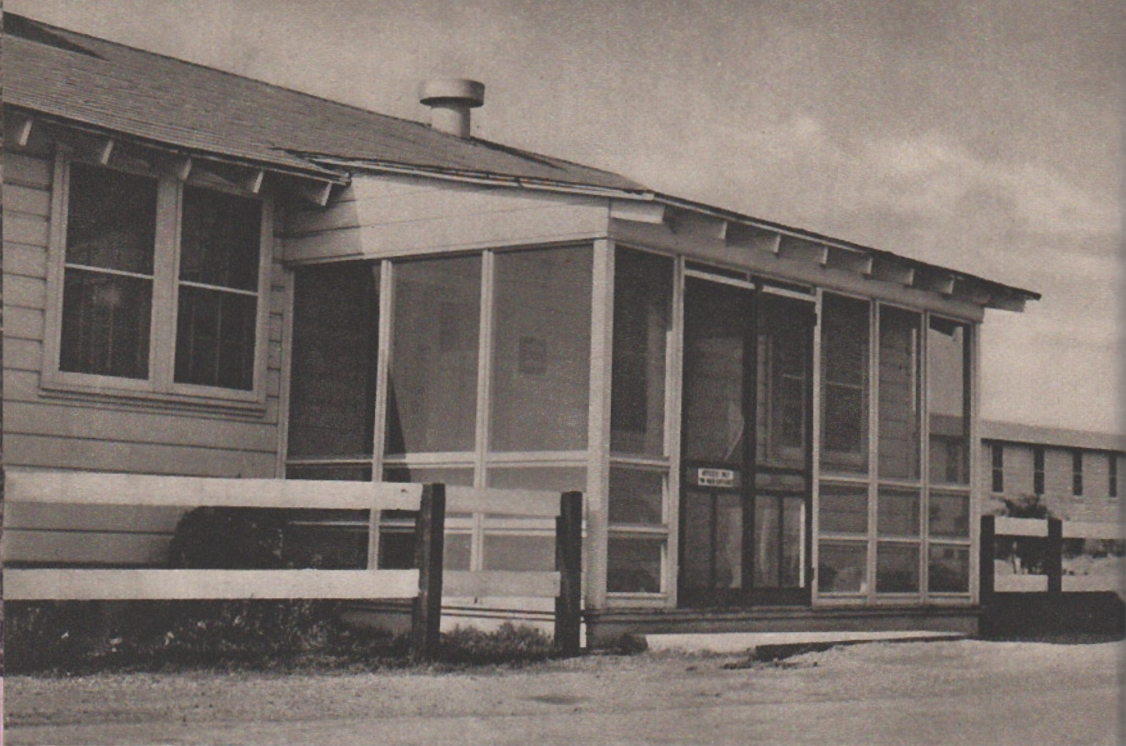
View of Officers' Club.



One of the lounges
in the Officers' Club.

(below) Decontamination of gassed areas.





Hospital entrance. Here the very latest equipment is installed for the well-being of the soldier. Competent doctors and nurses make up a most adequate staff.





Here is a view of one of the many well equipped laboratories.



Nurses barracks.



A heavy duty bridge is completed by Claiborne engineers.

The pontoons
They are c
trailers and

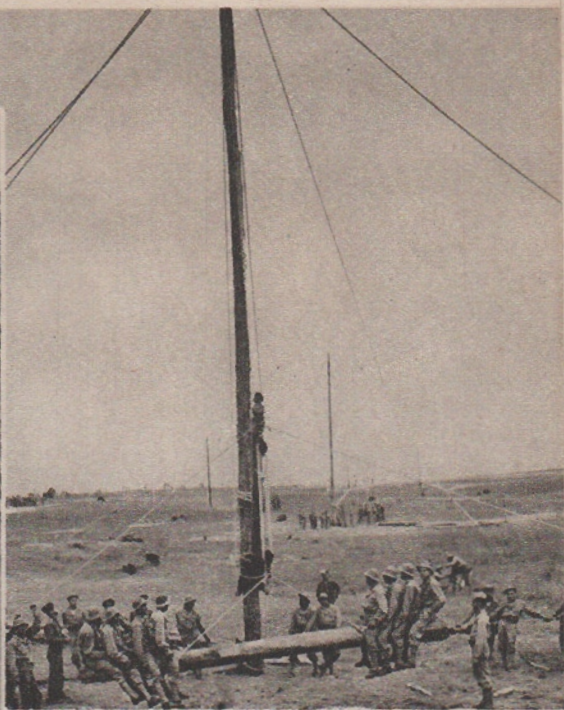
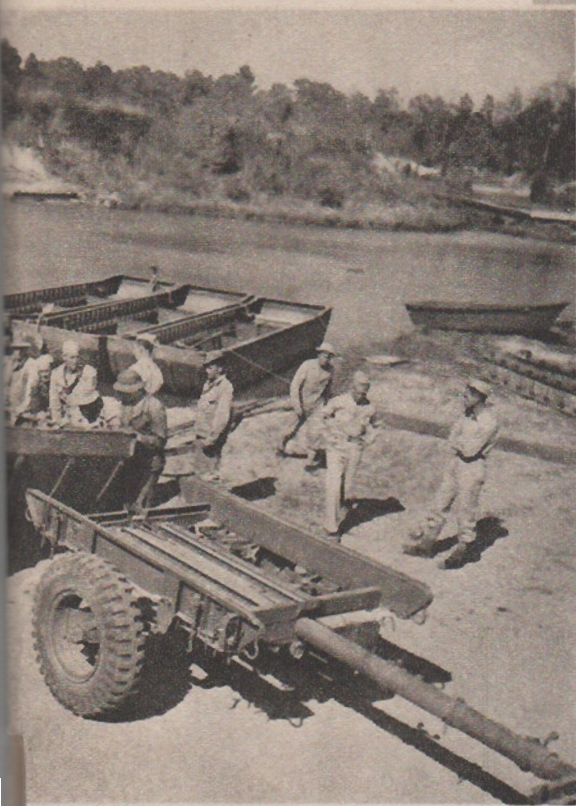


A long foot bridge spans a river
and forms a bridgehead on the
other side.

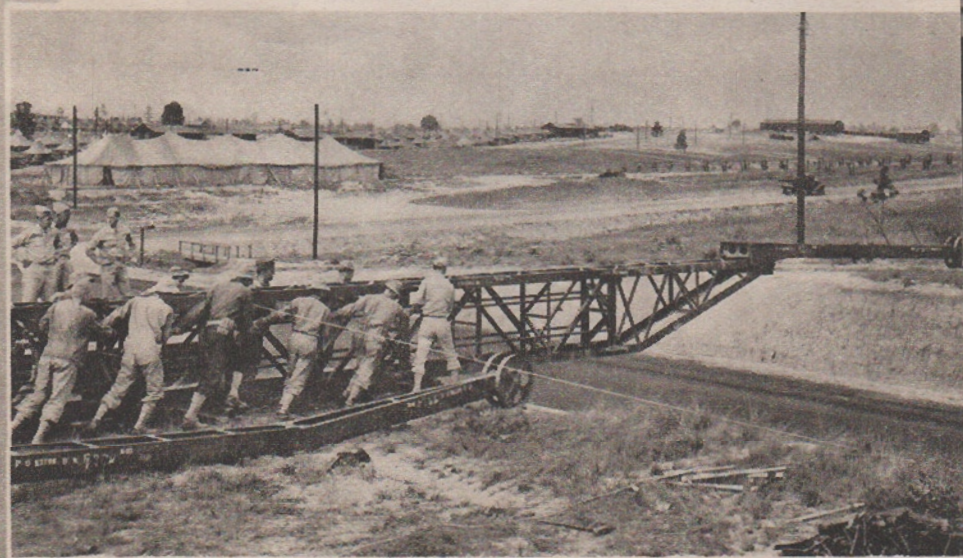
The pontoons for the bridge are rushed into place. They are carried with the army on motorized trailers and ready instantly upon demands.



for the bridge are rushed into place.
carried with the army on motorized
ready instantly upon demands.



A lesson in leverage.



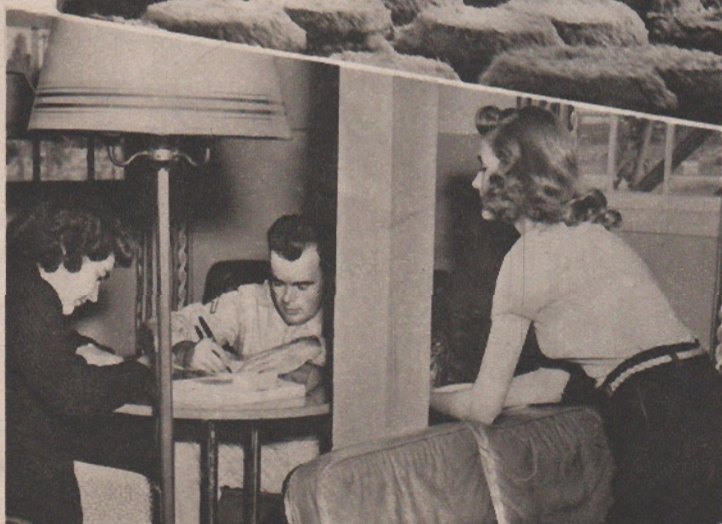
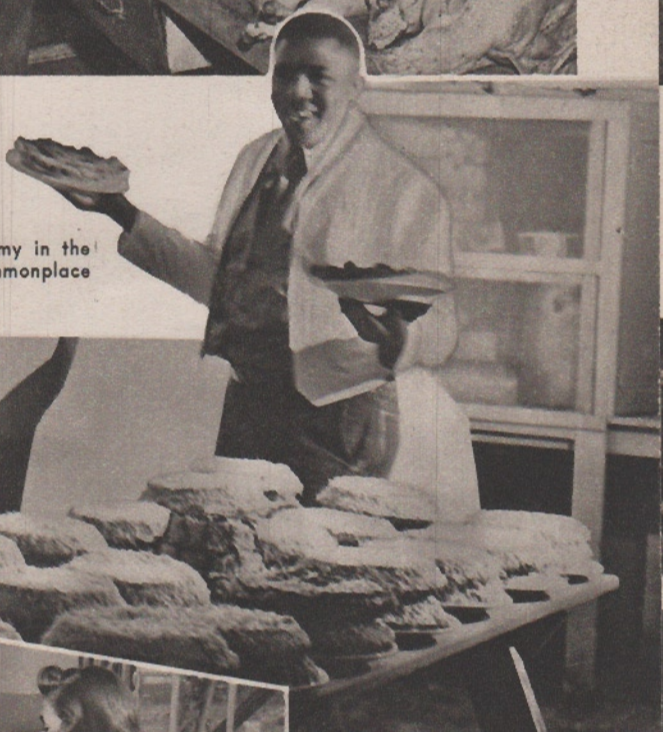
There are many ways to build a bridge.
The Claiborne engineers know all the answers.





Thanksgiving day sees more turkeys on the way to the oven, but mess sergeant says the quantities of food consumed daily does not dwindle on week days.

This is by far the best-fed army in the world. Cakes like this are commonplace in the daily fare.



Guest house recreation room.

A TOUGH COMMANDO COURSE UNDER



Under the wire.



Crawl and squirm
—ever forward.



SIMULATED BATTLE CONDITIONS!



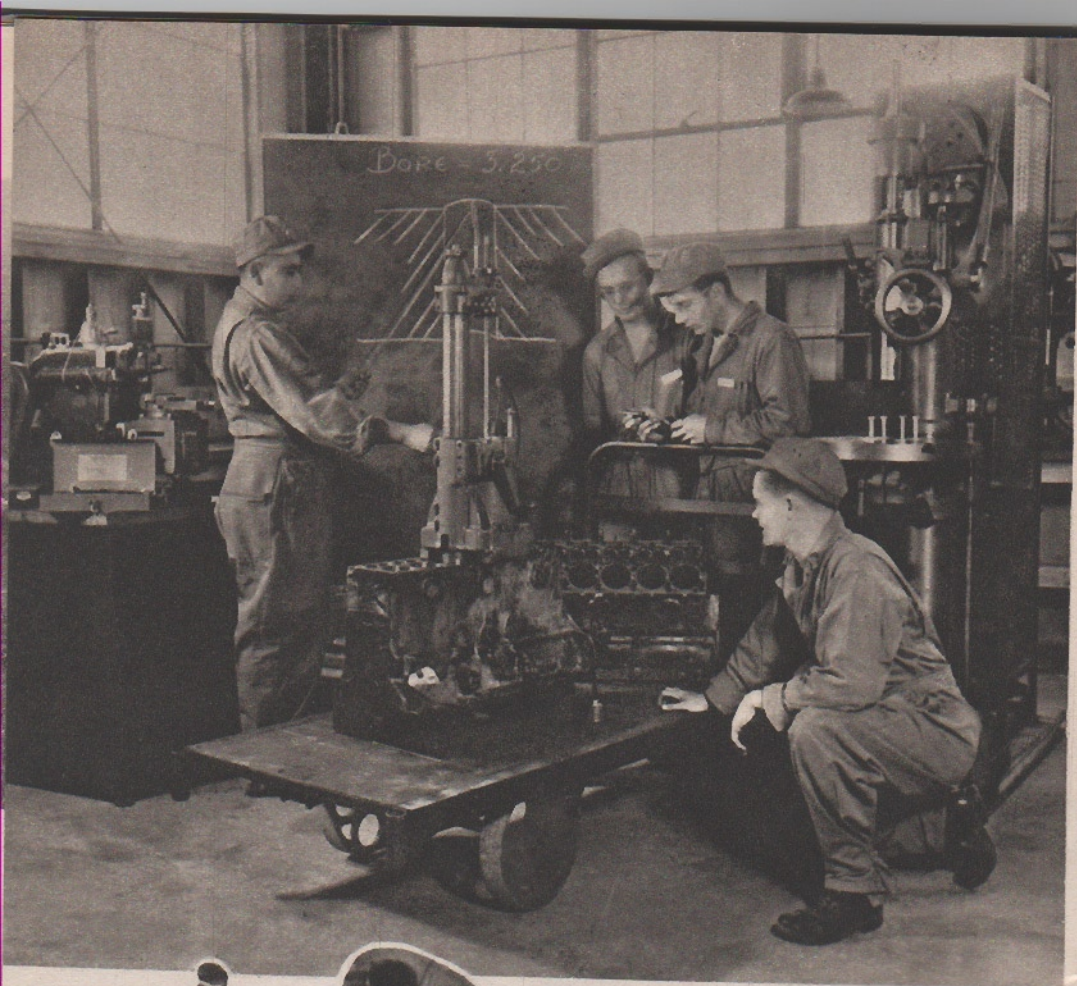
Through the wire—can't stop—into the water, quick!



Now up the other side—fast—faster!

Perilous and exhausting, yet the results are rugged, tough soldiers fit for any trail in battle.





Maintenance for the motorized equipment.

An Army must be able to maintain itself
with any minor repair jobs.





Not only sailors know their knots.



Officers and enlisted men go into the gas chamber filled with the real thing for actual gas mask training.



Setting-up exercises.



The big gloves only protect OUR boys from too much mayhem. They'll be ready to forget the gloves soon and remember the lesson.

The Post Exchange Service Station for Claiborne automobilists, dispenses a regular service station function for the soldier drivers.



THE Post Exchanges at Claiborne are the most popular spots for all soldiers when time permits for a little relaxation. Here the "Coke" bar does a rushing business and all shopping needs are well served in pleasant surroundings and at economical prices.



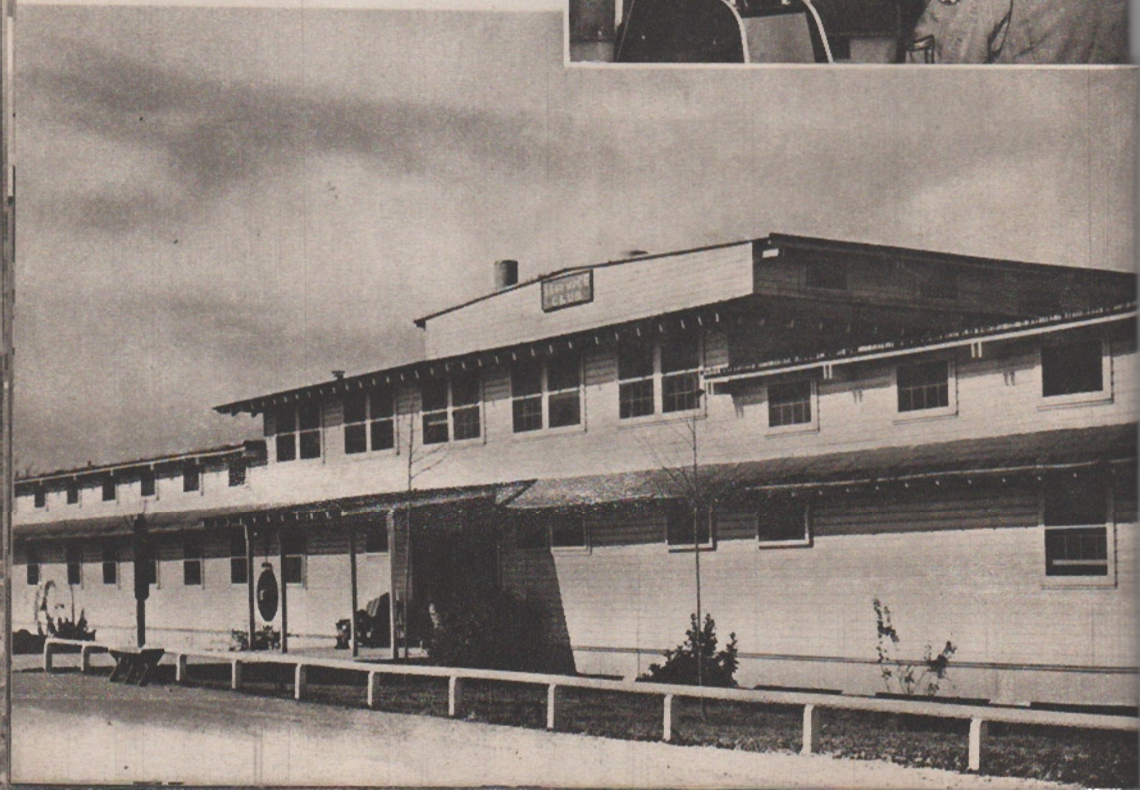
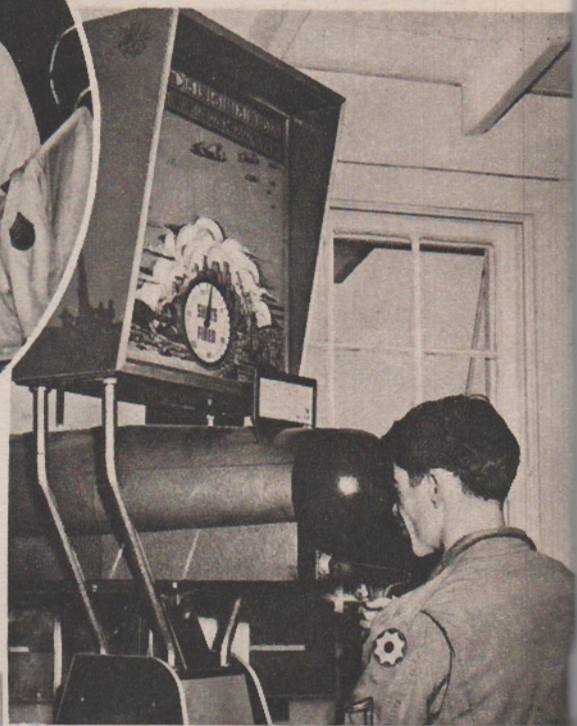
THE SERVICE CLUB FOR THE



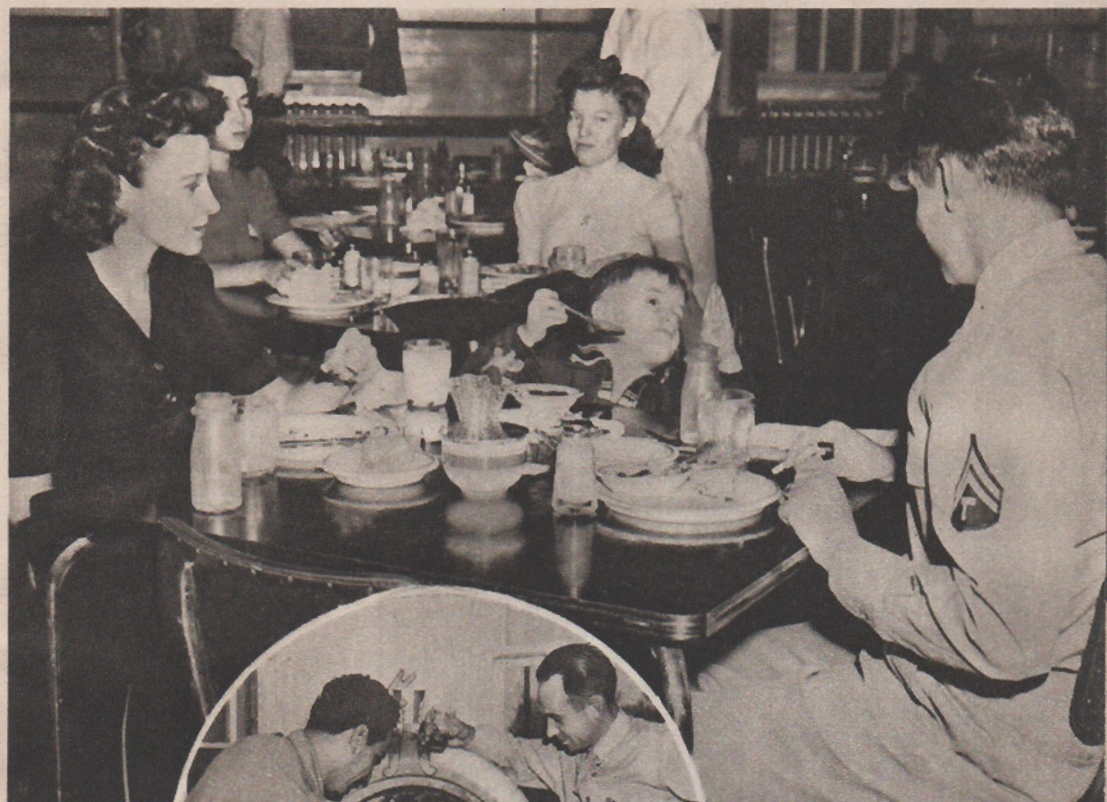
Wonder where the kibitzers
are? There's always a million!

The Service Club entrance.

A sailor rows a boat in the park on his
day off—soldiers LOVE the shooting
gallery.



ENLISTED MEN'S ENTERTAINMENT



Mother and Junior enjoy a dinner with dad at the Service Club. Junior doesn't like milk but watch that dessert disappear.

(Left) The chief noise around the Service Club is this juke box.





U.S.O. show for soldiers.



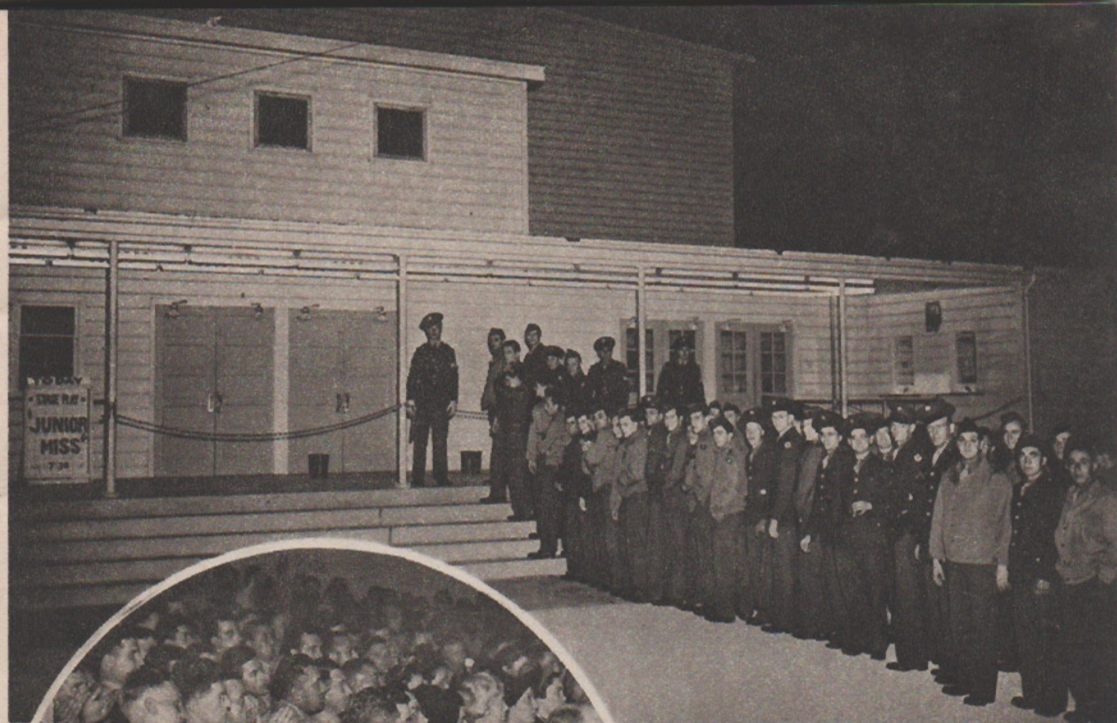
Sweet and hot! Fine music right from the camp itself.



After the entertainment the floor is cleared for the dance.



The boys and their "dates" dance on a Saturday night.



The usual Saturday night line-up for the show.

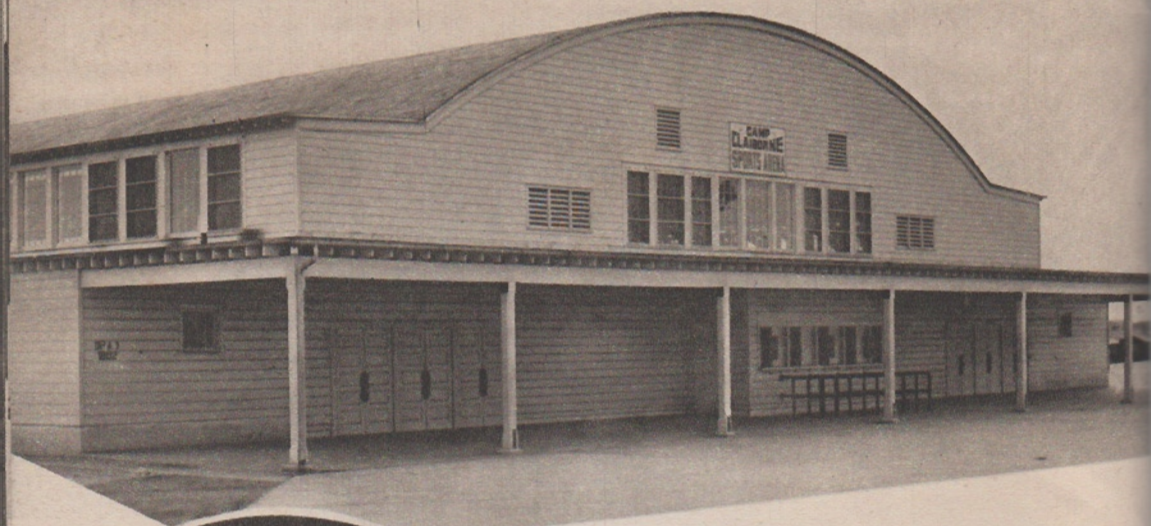


U.S.O. show—a packed house.

Interior of the theatre.



SPORTS AT CLAIBORNE



Sports arena.

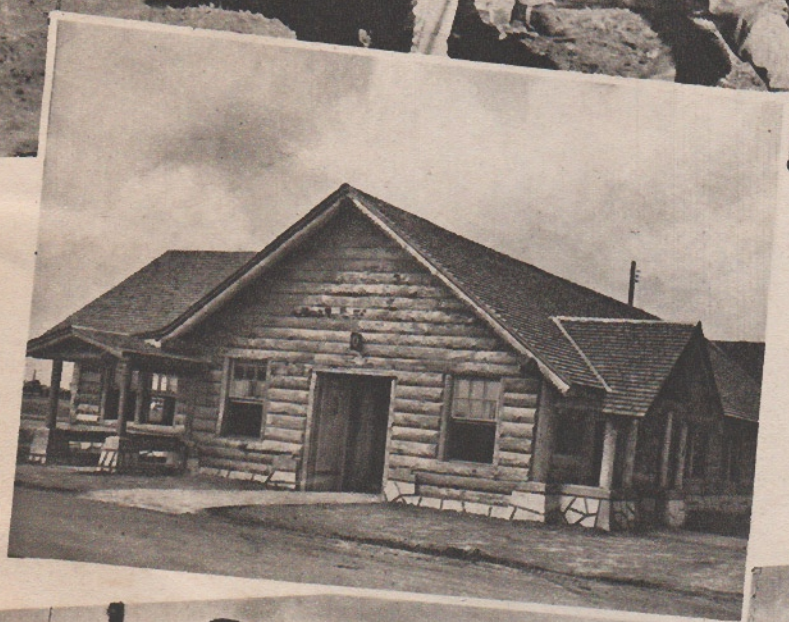


The boys from their company won by a knockout.

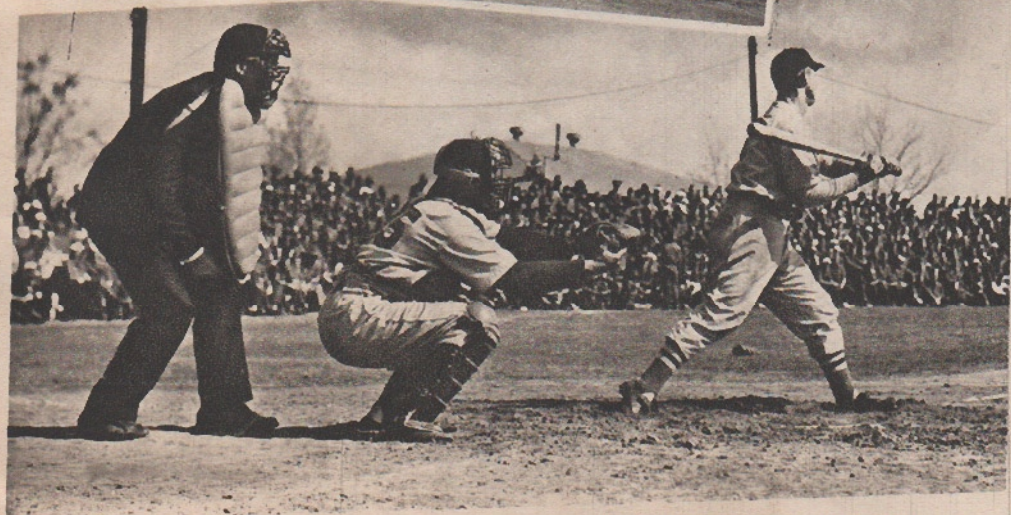




Co. E wins the camp tug-of-war.



Here is the Bus Station—a familiar rendezvous for every man in camp on his excursions to nearby town when a pass is forthcoming.



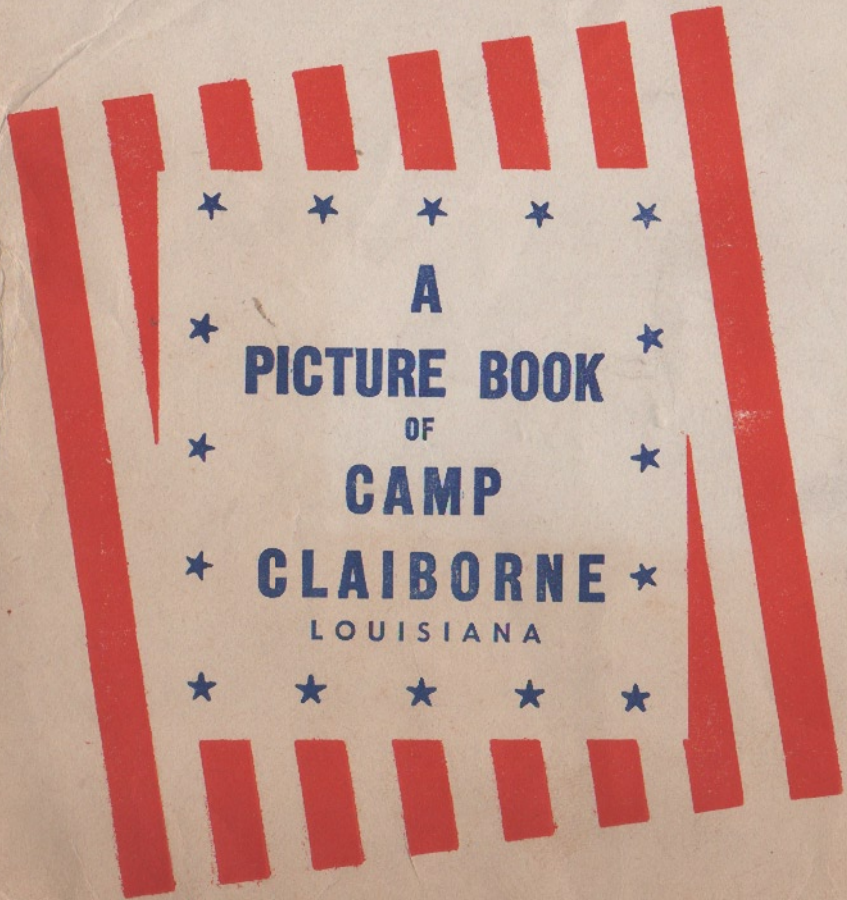
Real baseball is played at Claiborne.



Planned and printed in Gravure by The Ullman Company, Brooklyn, N. Y.
We acknowledge with appreciation the cooperation of the Public Relations
Office of Camp Claiborne and the Signal Corps for the pictures supplied.

DO NOT SEAL ENVELOPE

FROM PFC Harold M. Hahn, 15140749
745th Heavy Slop Company
1st Sgt. 3860th Unit
Camp Claiborne, Louisiana



TO Mrs. Ina M. Hahn

3031 Lorington Rd.

Shaker Heights, 22, Ohio

Handwritten notes and scribbles on the right side of the envelope, including a large signature and some illegible markings.