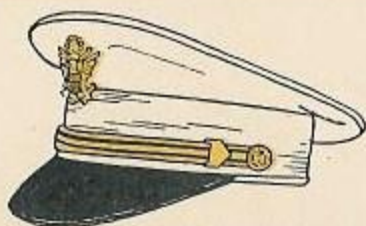


U. S. ARMY

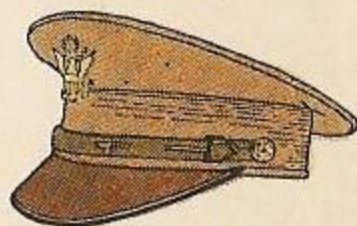
UNIFORMS



OFFICER'S BLUE DRESS CAP



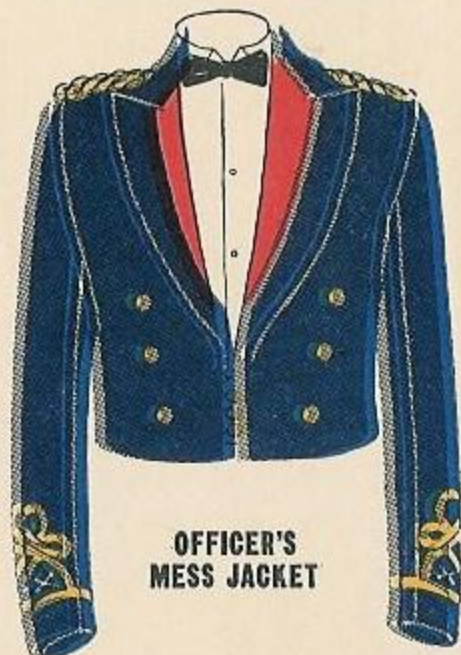
OFFICER'S WHITE DRESS CAP



OFFICER'S SERVICE CAP



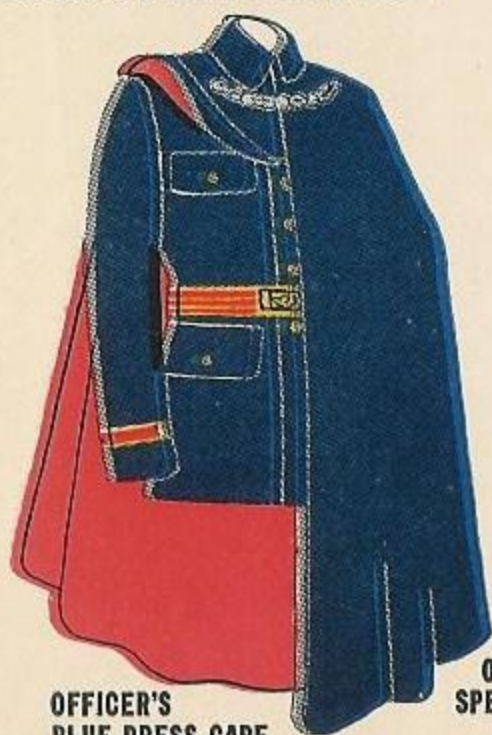
OFFICER'S SPECIAL EVENING DRESS



**OFFICER'S
MESS JACKET**



OFFICER'S BLUE DRESS COAT



**OFFICER'S
BLUE DRESS CAPE**



**OFFICER'S TROUSERS
SPECIAL EVENING DRESS**



**OFFICER'S TROUSERS
MESS**



**OFFICER'S TROUSERS
DRESS**



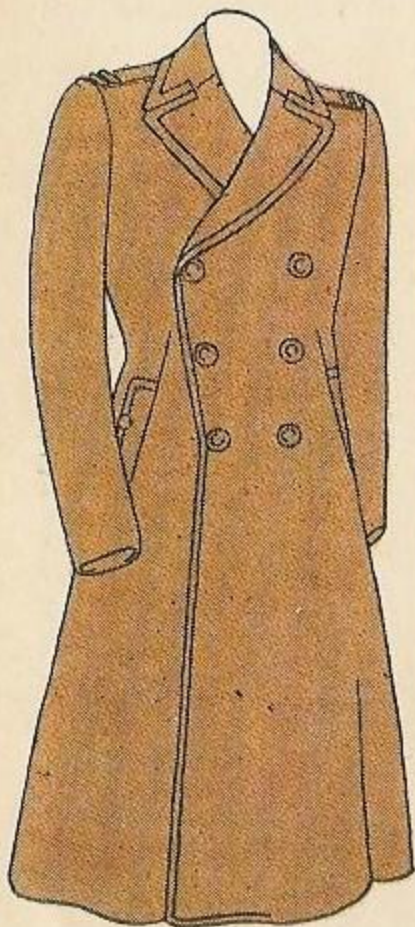
OFFICER'S SERVICE COAT



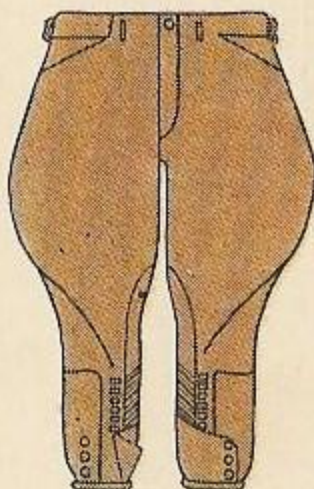
**OFFICER'S SERVICE COAT
AIR FORCE**



OFFICER'S SHORT OVERCOAT



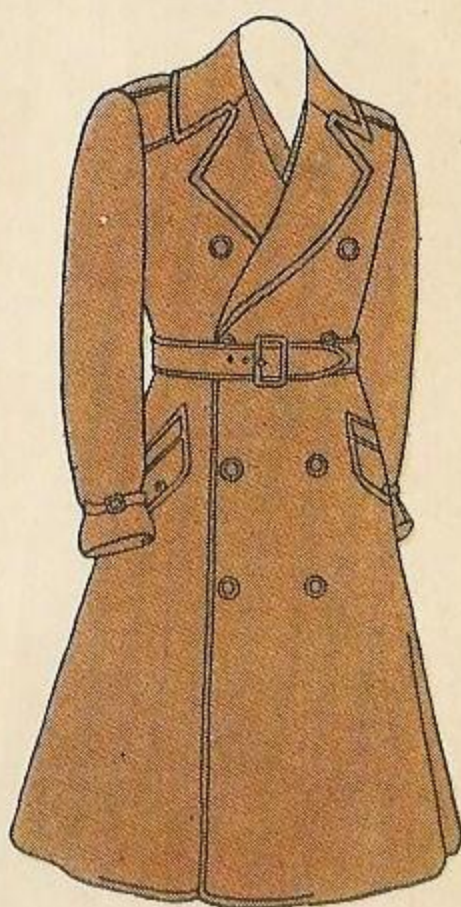
OFFICER'S LONG OVERCOAT



OFFICER'S BREECHES



**OFFICER'S DRESS COAT
WITH AIGUILLETES**

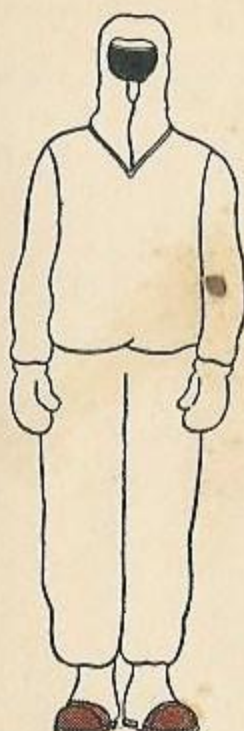


OFFICER'S RAINCOAT

U. S. ARMY UNIFORMS — ENLISTED MEN



ARMORED DIV.



SKI TROOPS



PARACHUTIST



SNOWSHOE TROOPS



FIELD UNIFORM

HEADGEAR



DRESS COAT



WINTER CAP
LAMBSKIN LINED



ARMORED DIV.



FIELD HAT



WINTER CAP

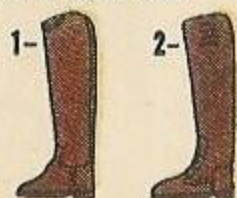


SKI TROOPS



AVIATION

FOOTGEAR



- 1—DRESS BOOTS
- 2—SEMI-DRESS BOOTS
- 3—FIELD BOOTS
- 4—FIELD BOOTS
- 5—LEGGINGS



GARRISON CAP



SERVICE HAT



SERVICE CAP



FIBER HELMET



STEEL HELMET



STEEL HELMET
LINER

WOMEN'S ARMY AUXILIARY CORPS AND U.S. ARMY NURSE CORPS



OFFICER'S WINTER
UNIFORM



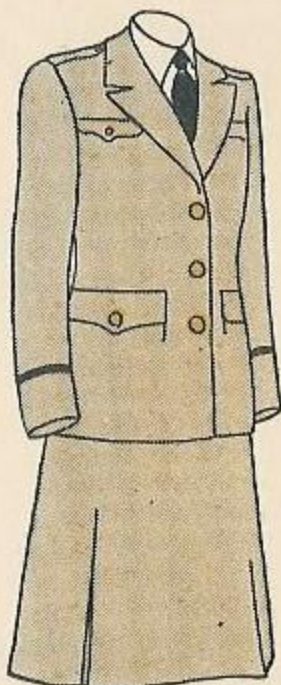
OFFICER'S SUMMER
UNIFORM



FOR RATED PERSONNEL
OR AUXILIARIES



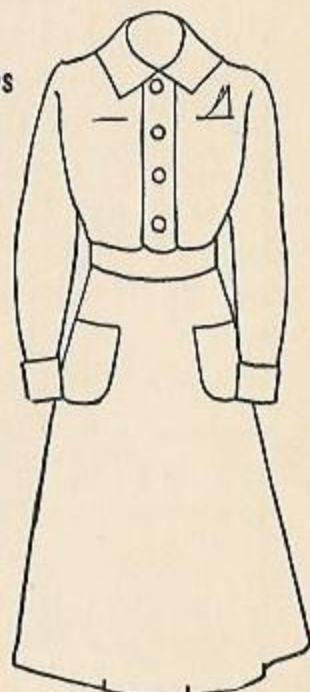
NURSE'S WINTER
UNIFORM AND HAT



NURSE'S SUMMER
UNIFORM AND HAT



NURSE CORPS
DEVICE








NURSE'S WORKING
UNIFORM

U. S. ARMY

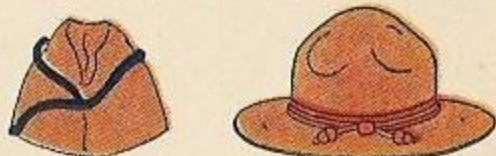
INSIGNIA



BRASSARDS—Worn around left arm for IDENTIFICATION OF PERSONS ON SPECIAL ASSIGNMENT

MP MILITARY POLICE	G S C GENERAL STAFF CORPS
PHOTOGRAPHERS	 VETERINARY SERVICE
CORRESPONDENT CHAUFFEUR	 ALL PERSONS IN THE MILITARY SERVICE RENDERED NEUTRAL BY THE TERMS OF THE GENEVA CONVENTION IN TIME OF WAR
PHOTOGRAPHER CHAUFFEUR	RECRUITING SERVICE MEN ON RECRUITING DUTY
RADIO NEWS CHAUFFEUR	FIRE MEMBERS OF FIRE TRUCK AND HOSE COMPANIES
CORRESPONDENT MESSENGER	 ARMY CORPS AND SERVICE COMMANDS
ATS PORT OFFICERS	 HEADQUARTERS OF FIELD FORCES AND WAR DEPARTMENT
ARMIES	 CORRESPONDENT
DIVISIONS	
PHOTOGRAPHER MESSENGER	
RADIO NEWS MESSENGER	
BROADCASTERS	

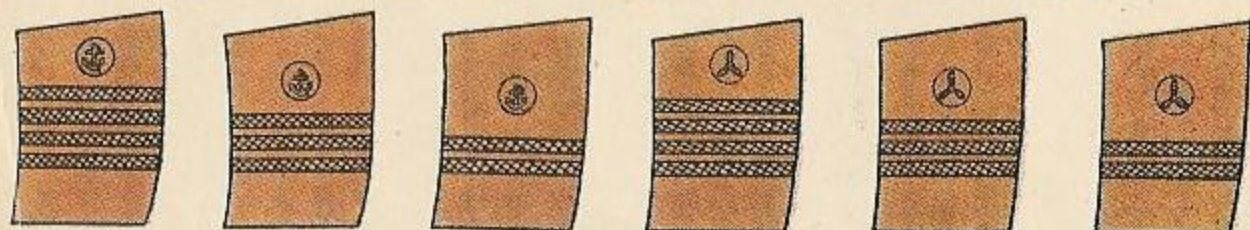
HAT ORNAMENTATION



PIPING

- AIR CORPS—Ultra Marine Blue and Orange
- CAVALRY—Yellow.
- CHAPLAINS—Black.
- CHEMICAL WARFARE SERVICE—Cobalt Blue and Yellow.
- COAST ARTILLERY CORPS—Scarlet
- CORPS OF ENGINEERS—Scarlet and White.
- DETACHED ENLISTED MEN'S LIST—Green.
- FIELD ARTILLERY—Scarlet
- FINANCE DEPARTMENT—Silver Gray and Yellow.
- INFANTRY—Light Blue.
- INSPECTOR GENERAL'S DEPT.—Dark Blue and Light Blue.
- JUDGE ADVOCATE GENERAL'S DEPT.—Dark Blue and White.
- MEDICAL DEPARTMENT—Maroon and White.
- MILITARY INTELLIGENCE RESERVE—Yellow and Purple.
- MILITARY POLICE—Yellow and Green
- NATIONAL GUARD BUREAU—Dark Blue.
- ORDNANCE DEPARTMENT—Crimson and Yellow.
- PERMANENT PROFESSORS U. S. MILITARY ACADEMY—Scarlet and Silver Gray
- QUARTERMASTER CORPS.—Buff
- SIGNAL CORPS—Orange and White.
- SPECIALISTS' RESERVE—Brown and Yellow
- WARRANT OFFICERS—Brown
- ADJUTANT GENERAL'S DEPT.—Dark Blue and Scarlet.

ARMY MINE PLANTERS SERVICE SLEEVE INSIGNIA—WARRANT OFFICERS' SERVICE COAT AND OVERCOAT



MASTER

FIRST MATE

SECOND MATE

CHIEF

ASSISTANT
ENGINEER

2ND. ASSISTANT
ENGINEER

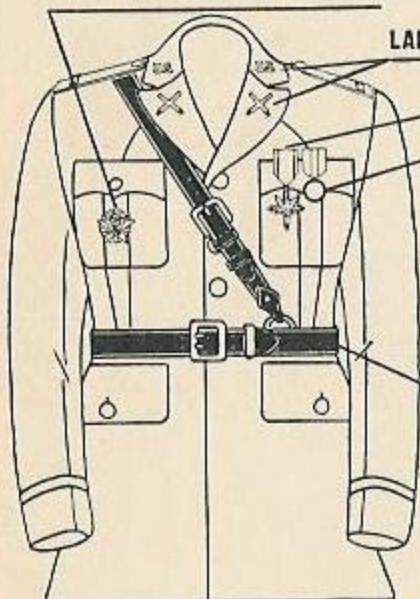
U. S. ARMY



WEARING OF INSIGNIA

WAR DEPARTMENT GENERAL STAFF IDENTIFICATION BADGE

REGIMENTAL INSIGNIA



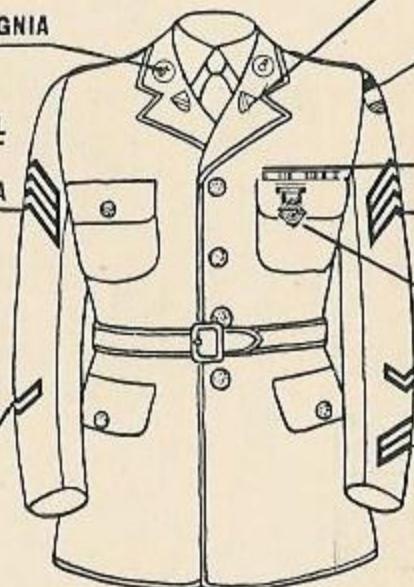
LAPEL COLLAR INSIGNIA

DECORATION
SERVICE MEDAL

GRADE INSIGNIA

SAM BROWNE BELT

WOUND CHEVRON



DIVISIONAL INSIGNIA

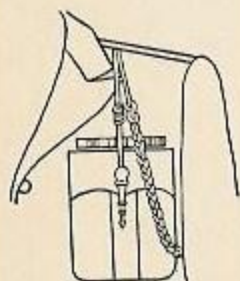
SERVICE CAMPAIGN RIBBONS

INSIGNIA OF RANK

QUALIFICATION BADGE

OVERSEAS CHEVRON

SERVICE STRIPES



FOURRAGERE:



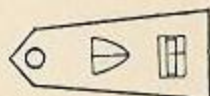
OFFICER CANDIDATE SCHOOL SHIRT INSIGNIA.



AVIATION BADGE; PARACHUTISTS' BADGE.



INSIGNIA ON SHIRT COLLAR OFFICERS



INSIGNIA ON SHOULDER LOOP OFFICERS

GREEN BRAID



SERVICE HAT



GARRISON CAP AVIATION CADETS.



SERVICE CAP



GARRISON CAP

SERVICE COAT AND OVERCOAT, WARRANT OFFICERS AND ENLISTED MEN WHO SERVED AS OFFICERS DURING THE WORLD WAR.

BLACK BRAID



LONG AND SHORT OVERCOAT, GENERAL OFFICERS.



OVERCOAT, WARRANT OFFICERS.



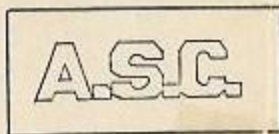
SERVICE COAT, AVIATION CADETS

SPECIALISTS CORPS INSIGNIA



CAP DEVICE ARMY SPECIALISTS CORPS

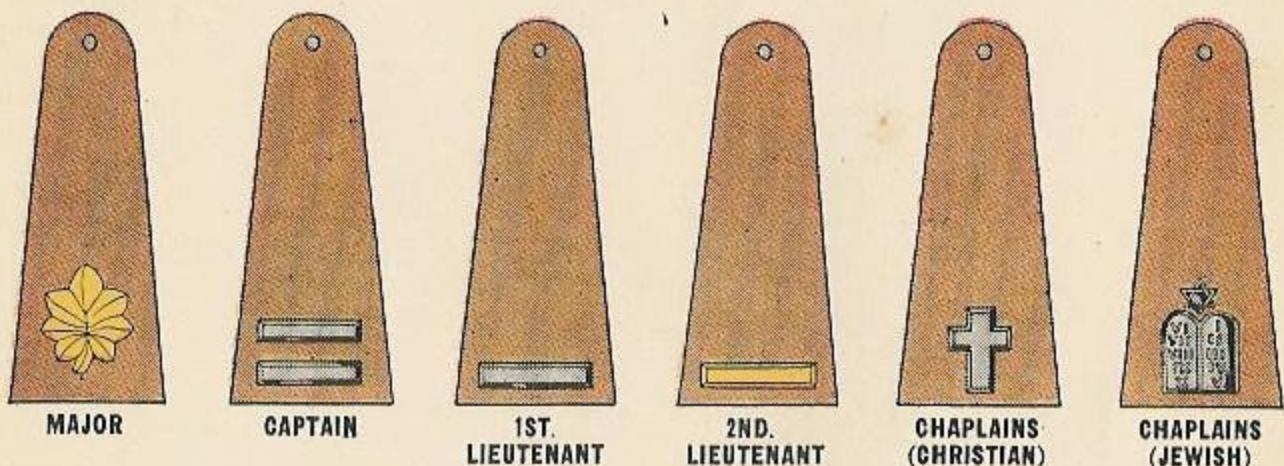
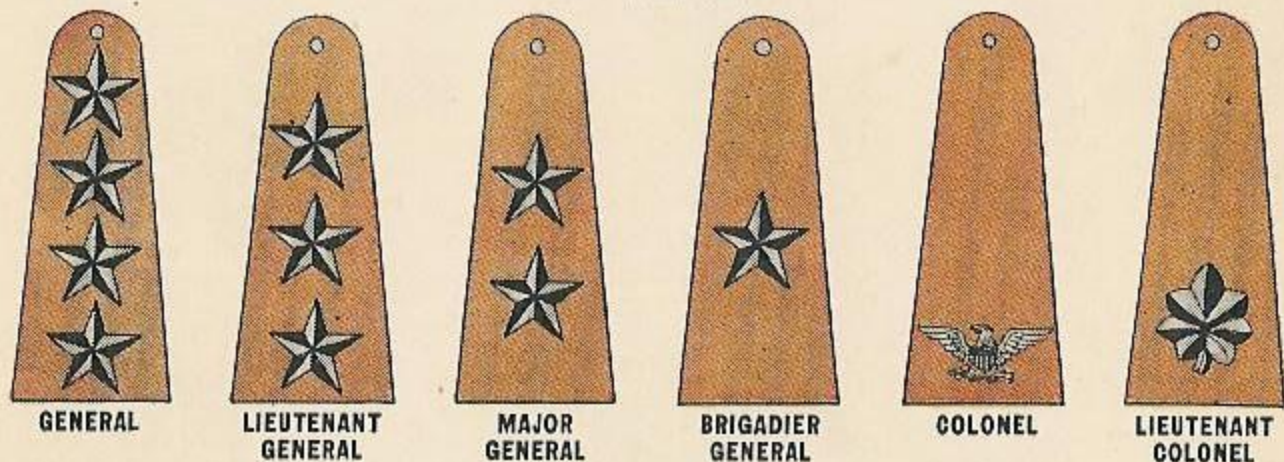
A.S.C. SHIRT COLLAR DEVICE-OFFICERS



INSIGNIA-ENLISTED SPECIALISTS

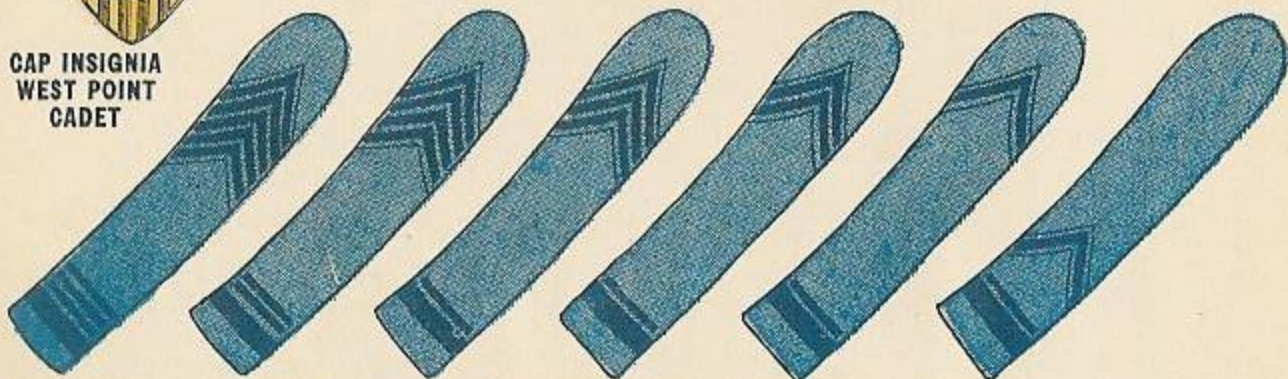


COMMISSIONED OFFICER'S SHOULDER LOOPS INSIGNIA OF GRADE



CAP INSIGNIA
WEST POINT
CADET

U. S. MILITARY ACADEMY (WEST POINT) CHEVRONS OF RANK Worn on both sleeves of dress and full dress uniforms — Thin Black Stripes on lower sleeve indicate classes, one for each year of service.



REGIMENTAL COMMANDER
(1ST. CLASSMAN)
BATTALION COMMANDER
(2ND. CLASSMAN)
COMPANY COMMANDER
(3RD. CLASSMAN)
LIEUTENANT
SERGEANT
CORPORAL