

TT 590  
.S883  
Copy 1

# Streiff's Ideal System of Garment Cutting

By  
**E. L. STREIFF**



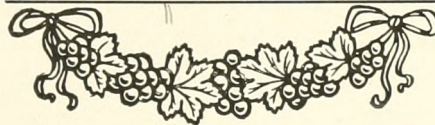






# Streiff's Ideal System of Garment Cutting

By  
**E. L. STREIFF**



---

Copyright 1920

...by...

**EUGENE L. STREIFF**  
DETROIT, - MICHIGAN

---



TT590  
S883

## INTRODUCTION.

3

Streiff's Ideal System is published to meet a long standing demand for a practical, reliable and trustworthy system.

In its preparation the aim has been to produce a convenient book of reference and furnish a comprehensive exposition of an anthropological science heretofore imperfectly understood. In order to accomplish this and to confine the work within reasonable limits, great care has been given to the condensation of the subject matter.

The technical knowledge necessary for the successful pursuit of garment cutting is embodied in the system herein described.

I know it will fulfill its mission and meet with a cordial reception by all practical tailors who desire to produce comfortable, graceful and artistic clothes at a minimum cost of mental and physical labor.

As quality not quantity has been a guiding principle with me, I delayed adding to the numerous systems already in existence until I could offer a distinctly superlative system that will greatly facilitate the acquirement of practical efficiency in garment cutting.

EUGENE L. STREIFF.



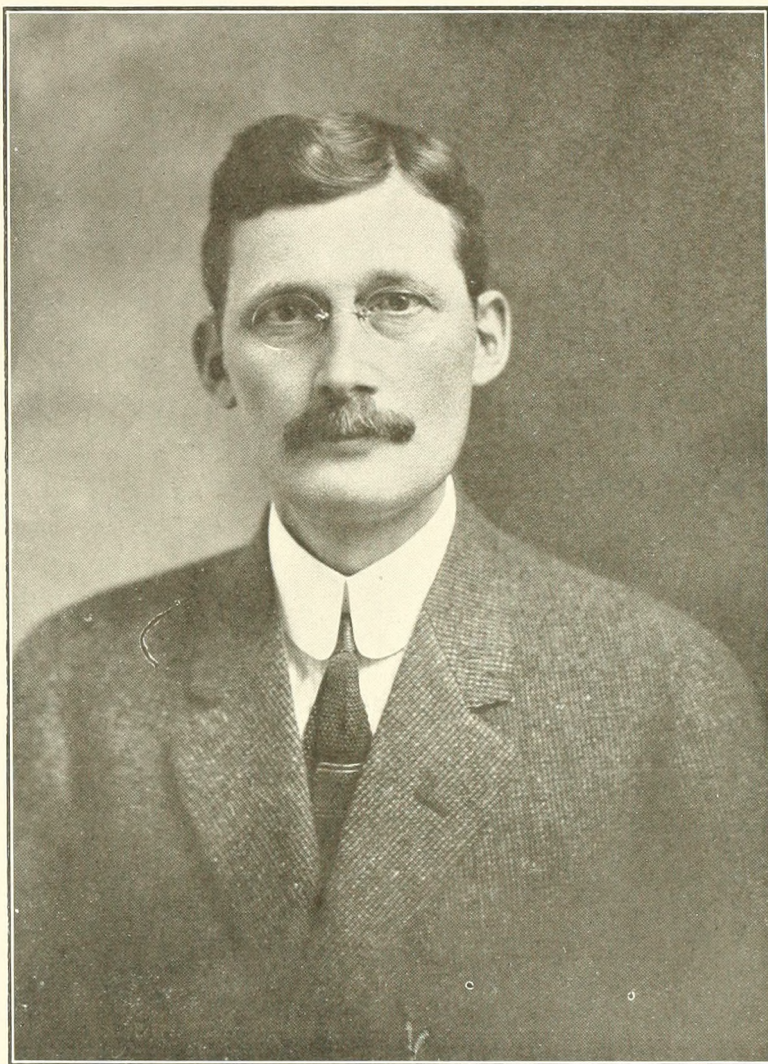
© C1A563452



#2500

FEB 17 1920





EUGENE L. STREIFF

DIAGRAMS A AND B.  
TO MEASURE

THE COAT.

Take all measures for overcoat, coat or vest, over the vest.

Establish point A, at the socket bone of neck, find the center of back at B, establish C at the hollow of waist.

Measure the length of sleeve under the arm from E to F.

To measure the long shoulder stand to one side and toward the back of the client. Place the end of the tape at A, hold it firm with the three fingers of the left hand, allowing the thumb and index finger to be free. Now pass your right hand under the arm and draw the tape to E (as line G on diagram B indicates). Now use your index finger to place the tape close under the arm, then allow the arm to fall and hang naturally; draw the tape upward a little and pass it diagonally across the back to the thumb and index finger left free; now change hands without allowing the tape to slip and finish the measure, with the tape in the left hand, to A.

Measure the short shoulder by bringing the tape down over the most prominent part of the shoulder blade to the center of back at B.

NOTE: Always take the long shoulder and short shoulder measures twice so as to be sure they are correct.

Measure the natural-waist from A to C.

Measure the length from A to D.

Measure the breast over the fullest part of the chest and most prominent part of the blade at E.

Measure the waist over the smallest part at C and H.

THE VEST.

Measure the opening from A to I.

Measure the length from A to J.

THE TROUSERS.

Measure the outside length from H, a point on the hip, to K, a point 1 inch from the floor.

Measure the inside length from L to M.

Measure the waist, under the vest, over the trousers, at H.

Measure the seat over the large part at N.

Measure the knee at O.

Measure the bottom at P.

NOTE: Care must be taken to measure uniform, not loose nor tight.

The client should stand in his natural attitude.



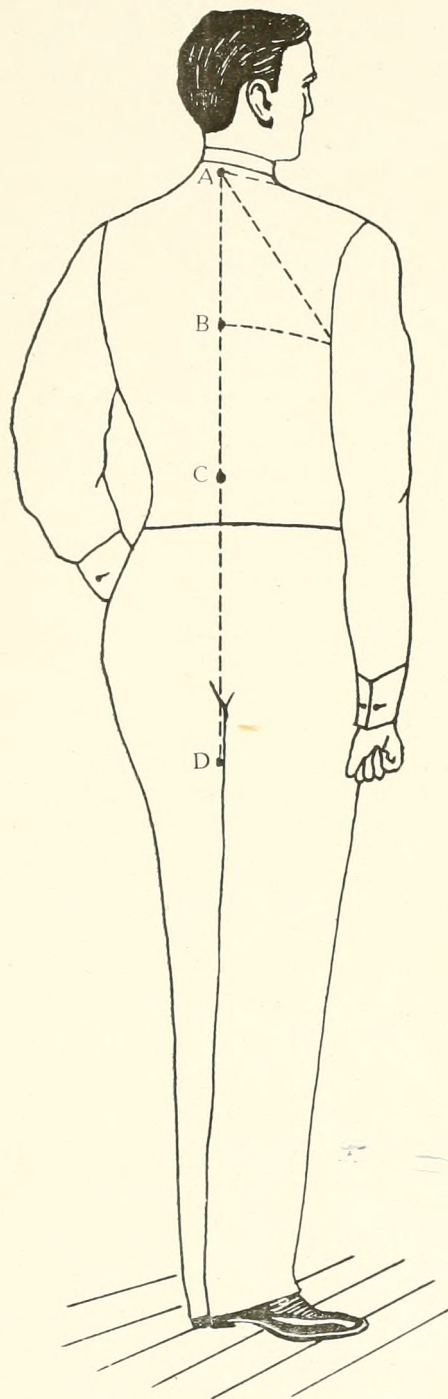


Diagram A

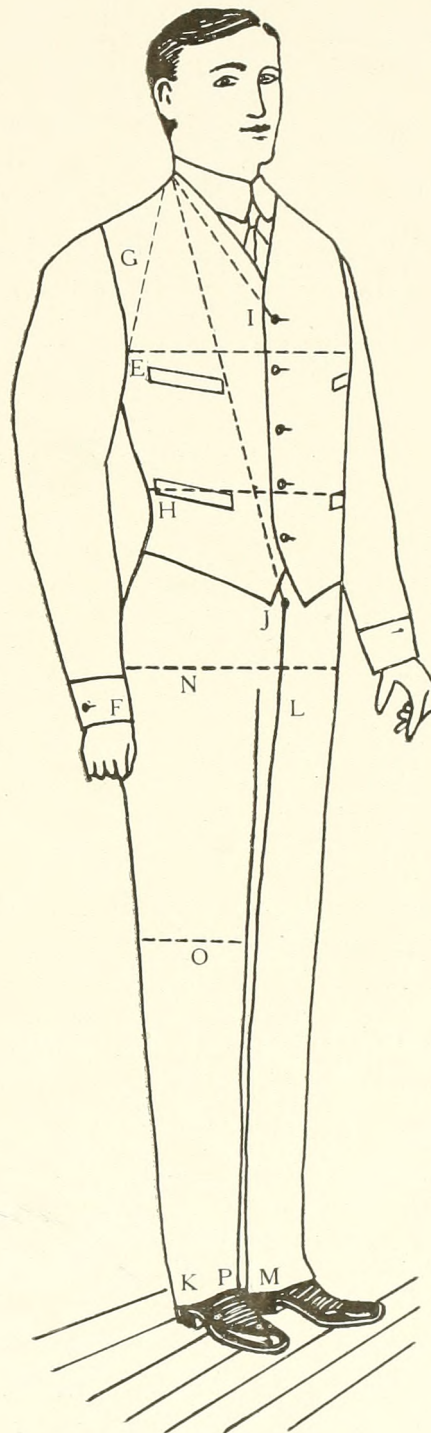


Diagram B



## DIAGRAM C.

NOTE: All measures are taken over the vest. To obtain ease or exaggeration certain measures must be increased. Such measures are: Long shoulder, short shoulder, breast, waist and seat. Add  $\frac{1}{2}$  inch to long shoulder and short shoulder and for each  $\frac{1}{2}$  inch so added to long shoulder and short shoulder add 1 inch to breast, waist and seat measures. Thus the size of a coat may be increased as desired. For the following diagram 1 inch has been added to long shoulder and short shoulder and 2 inches to breast, waist and seat measures.

## THREE-BUTTON SACK.

## The Measures:

Sleeve under arm .....	18
Long shoulder .....	27 $\frac{1}{2}$
Short shoulder .....	24
Natural waist .....	17
Length .....	30
Breast .....	40
Waist .....	35
Seat .....	41

## TO DRAFT.

A is the point from which square.

B from A is the natural waist.

C from A is the length.

D from A is the amount the long shoulder is more than the short shoulder. ( $3\frac{1}{2}$  inches for this diagram). For convenience use  $\frac{1}{2}$  of short shoulder for all points specified short shoulder.

E from D is  $\frac{1}{6}$  of short shoulder plus the amount as between A and D. ( $\frac{1}{6}$  of  $15\frac{1}{2}$  inches).

F from E is  $\frac{1}{4}$  short shoulder. Square forward from F, B and C.

G from F is  $\frac{1}{2}$  breast.

H from G is  $2\frac{1}{4}$  inches.

I from H is  $\frac{3}{4}$  inch. ( $\frac{1}{2}$  the amount desired for lapover).

J from B is  $\frac{1}{24}$  breast.

K is halfway between J and B. Draw a line from E to K and square down from K.

L from J is  $\frac{1}{4}$  inch for each inch that the waist is less than the breast. ( $1\frac{1}{4}$  inches for this diagram).

M from L is  $\frac{1}{2}$  waist.

N from M is  $2\frac{1}{4}$  inches.

O from N is  $\frac{3}{4}$  inch. ( $\frac{1}{2}$  the amount desired for lapover.) Draw a line from I to O and square down from O.

P from A is  $\frac{1}{4}$  short shoulder. Square up from P.

Q from P is  $\frac{1}{24}$  short shoulder. Shape from A to Q.

R from F is  $\frac{1}{8}$  short shoulder.

S from R is  $\frac{1}{2}$  short shoulder. Square up from S.

T from S is  $\frac{1}{8}$  short shoulder. Square forward from T.

U from T is  $\frac{1}{24}$  short shoulder.

V from S is  $\frac{1}{3}$  short shoulder.

W from V is the same distance as between D and E. Draw a line from Q through W and shape from a point  $\frac{1}{4}$  inch from W to a point  $\frac{1}{4}$  inch from U.

X from F is the short shoulder. (12 inches for this diagram).

Y from X is  $1\frac{1}{4}$  inches for making. Square up and down from Y.

Z from Y is  $\frac{1}{12}$  short shoulder.

Square up from Z guiding by points X and E.

1 from Y is the short shoulder. (12 inches for this diagram).

2 from 1 is  $\frac{3}{4}$  inch for making.

3 from F is the same distance as between A and F, X and Y combined.

Square back from 2 guiding by points 3 and 1.

4 from 1 is  $\frac{1}{3}$  short shoulder. Square forward from 4.

5 from 4 is  $\frac{1}{8}$  breast.

6 from K is  $\frac{1}{2}$  short shoulder. Draw a line from U to 6.

7 from J is  $\frac{1}{2}$  short shoulder.

8 from B is  $\frac{1}{6}$  seat. Square forward from 8.

9 from 8 is the same distance as between B and 7.

Draw a line from 6 through 9 and shape to bottom.

10 from 9 is the same distance as between 6 and 7.

Draw a line down from 10 guiding by point 7 which establishes point

11 on the line squared forward from C.

12 from 7 is  $\frac{1}{2}$  of the distance as between J and L.

13 from 10 is  $\frac{1}{4}$  inch for each inch that the seat is more than the breast. ( $\frac{1}{4}$  inch for this diagram).

Draw a line from a point where the breast line crosses the line U-6, to 12 and from 12 to 13 and from 13 down to parallel the line 10-11.

Shape to 12 and 6 as represented.

Square forward through 11, guiding by line drawn down from 13.

14 from 11 is  $\frac{1}{3}$  short shoulder. Square forward from 14. Shape at 14.

15 from Y is  $\frac{2}{3}$  of sleeve under arm less 1 inch, ( $\frac{2}{3}$  of 17 inches) and is center of pocket. Draw the pocket opening through 15 to run parallel with the bottom and make  $6\frac{1}{2}$  inches in length.

The breast pocket is 1 inch from Y.

Draw a line from the armseye to a point at the pocket, halfway between 15 and the back end of same. Shape out an amount equal to  $\frac{1}{2}$  the distance as between 7 and 12. The other half shape out in front of 15 as represented. Cut out the back and place point A at point 2 with the line A-D on the line squared back from 2 by point 3. Mark around same and shape the shoulder as represented. Shape the neckgorge and armseye as represented. Establish the buttonholes.

Draw a crease line from a point  $1\frac{1}{4}$  inches from the neckgorge to the upper buttonhole.

Shape the lapel and front.

For a double breasted coat add from H and N,  $\frac{1}{2}$  the amount desired for lapover.

## THE COLLAR.

16 is established at the hollow part of neckgorge on the forepart.

17 is  $1\frac{1}{4}$  inches from 16.

Circle from 2 using point 16 as a pivot, which establishes point

18 on the crease line.

19 from 18 is the same distance as between 18 and 2. Draw a line from 19 to 17. Shape at 17.

20 from 19 is the same distance as between 16 and 17. Draw a line from 20 to 16.

21 from 20 is  $\frac{1}{2}$  inch. Square forward from 21.

Make the leaf the desired width and shape.



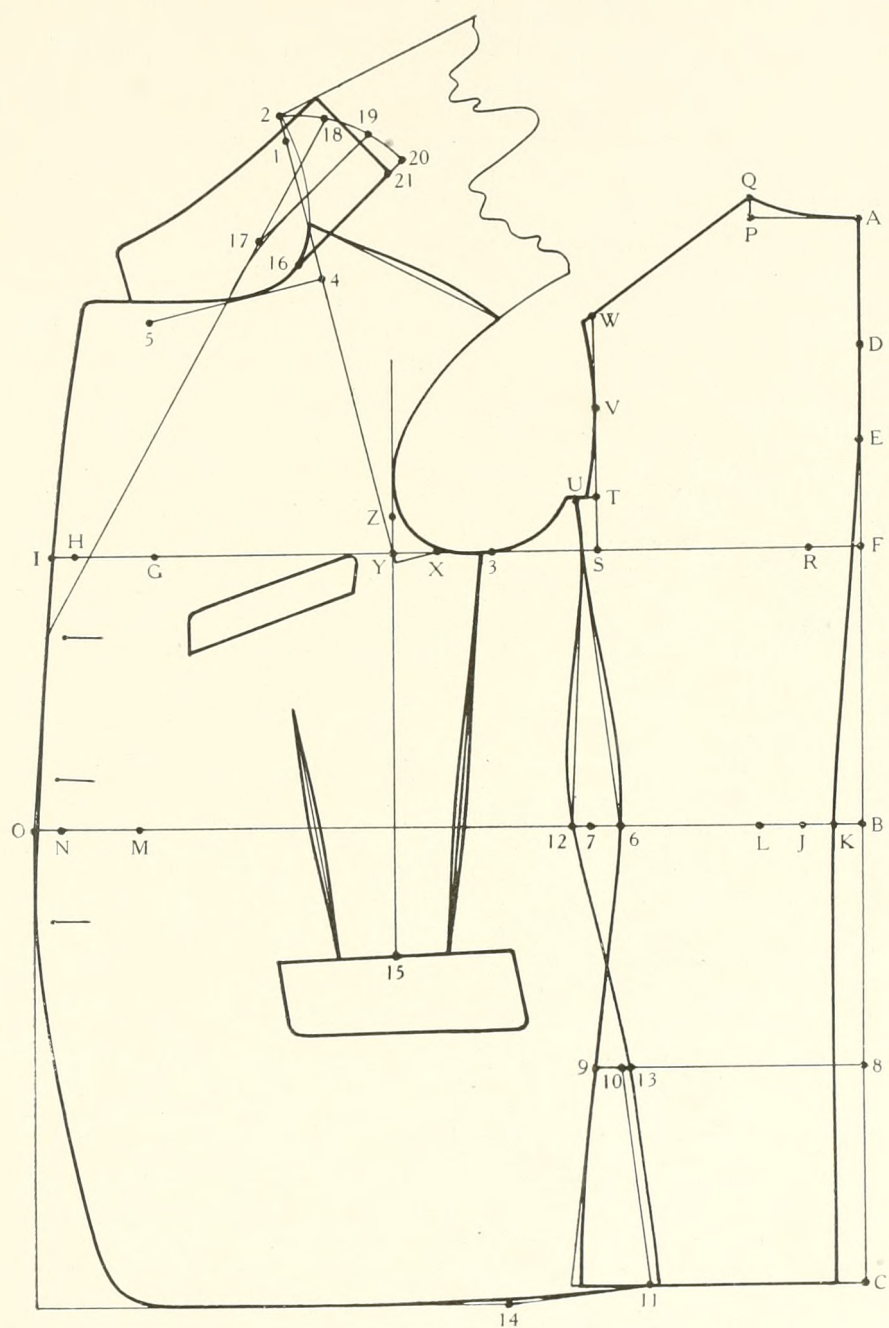


Diagram C



DIAGRAM D.  
THE SLEEVE TO DIAGRAM C.

The Measures:

Sleeve under arm.....18  
Short shoulder .....24

TO DRAFT.

For convenience use  $\frac{1}{2}$  of short shoulder for all points specified short shoulder. (12 inches for this diagram.)

A is the point from which square.

B from A is  $\frac{1}{3}$  short shoulder. Square back from B.

C from B is  $\frac{1}{12}$  short shoulder.

D from C is  $\frac{1}{3}$  short shoulder.

E from A is  $\frac{1}{4}$  inch for making.

F from E is  $\frac{2}{3}$  short shoulder. Draw a line from F to D.

G from F is  $\frac{1}{3}$  short shoulder. Circle from F using point G as a pivot. Shape to a point  $\frac{1}{4}$  inch from C.

H from F is  $\frac{1}{12}$  short shoulder. Draw a line from H to D and shape to a point  $\frac{1}{4}$  inch from C.

I from B is  $\frac{1}{8}$  sleeve under arm.

J from B is  $\frac{1}{2}$  sleeve under arm. (9 inches for this diagram.) Square back from J.

K from J is  $\frac{1}{2}$  inch. Draw a line from B to K.

Draw lines down from J and K, guiding by point I. Shape at J and K.

L from K is  $\frac{1}{2}$  sleeve under arm. (9 inches for this diagram.) Square forward and back from L guiding by line K-L.

M from L is  $\frac{1}{2}$  short shoulder, or any width desired for cuff.

N from J is  $\frac{2}{3}$  short shoulder. Draw a line from N through M and square by same to L.

Draw lines from a point  $\frac{1}{4}$  inch from F and H, to N. Shape at N.







## DIAGRAM E.

## SINGLE BREASTED VEST WITHOUT COLLAR.

## The Measures:

Long shoulder .....	26½
Short shoulder .....	23
Natural waist .....	17
Breast .....	38
Waist .....	33
Opening .....	14
Length in front.....	26½

## TO DRAFT.

- A is the point from which square.  
 B from A is the natural waist.  
 C from A is the amount the long shoulder is more than the short shoulder. (3½ inches for this diagram.) For convenience use ½ of short shoulder for all points specified short shoulder.  
 D from C is 1/6 of short shoulder plus the amount as between A and C. (1/6 of 15 inches.)  
 E from D is ¼ short shoulder. Square forward from E and B.  
 F from E is ½ breast.  
 G from F is 2 inches.  
 H is halfway between G and E.  
 I from B is 1/24 breast.  
 J is halfway between I and B. Draw a line from D to J and square down from J.  
 K from I is ¼ inch for each inch that the waist is less than the breast. (1¼ inches for this diagram.)  
 L from K is ½ waist.  
 M from L is 2 inches. Draw a line from G to M. Square down from M.  
 N is halfway between M and K. Draw a line from H to N and square down from N. Shape to N.  
 O from N is the same distance as between K and I. Draw a line from H through O.  
 P from A is ¼ short shoulder. Square up from P.  
 Q from P is 1/24 short shoulder. Shape from A to Q.  
 R from E is 1/16 short shoulder.  
 S from R is ½ short shoulder. Square up from S.  
 T from S is 1/3 short shoulder.  
 U from T is the same distance as between C and D. Square forward from U.  
 V from U is 1/16 short shoulder. Draw a line from Q to V. Shape the armseye of back from a point ¼ inch from U, to a point ½ inch below H.  
 W from E is the short shoulder. (11½ inches for this diagram.)

- X from W is ¾ inch for making. Square up from X guiding by points W and D.  
 Y from X is 1/16 short shoulder. Square up from Y.  
 Z from X is the short shoulder. 11½ inches for this diagram.)  
 1 from Z is ¾ inch for making.  
 2 from E is the same distance as between A and E, W and X combined. Square back from 1 guiding by points Z and 2.  
 3 from 1 is ¼ short shoulder.  
 4 from Z is 1/3 short shoulder. Square forward from 4.  
 5 from 4 is ⅛ breast. Draw a line from 5 to G.  
 6 from 1 is the opening plus 1 inch for making, applied from 1 to 3 to 6.  
 7 from 1 is the length plus 1 inch for making, applied from 1 to 3 to 7. Draw a line from K to 7 which establishes point  
 8 on the line squared down from N. Square forward from 8 guiding by line H-N which establishes point  
 9 on the line drawn from H through O.  
 10 from B is the same distance as between O and 9. Draw a line from 10 to 9 and square by same toward point S, which establishes point  
 11 at the waist line. Draw a cutout equal in distance less ½ inch as between J and I, dividing the amount on either side of 11. Cut out the back and place point A at 1, with the line A-C on the line squared back from 1 by point 2. Mark around same and shape the armseye as represented.  
 Draw a line from the shoulder point at 3, to 6.  
 Shape through Z to a point 1 inch from 3, down to 6.  
 Draw a line to 3, to parallel the line shaped through Z.  
 12 from 3 is ½ inch less than the distance as between 1 and 3.  
 Square forward from 12 by line 12-3.  
 Circle from 7, using point 3 as a pivot.  
 Establish the buttonholes and pockets.  
 Shape the front and bottom as represented.  
 For a double breasted vest add to the front of line G-M, ½ the amount desired for lapover.  
 The line 5-G is front whenever the opening is above the breast line.  
 For clerical vest shape the neckgorge to 5.



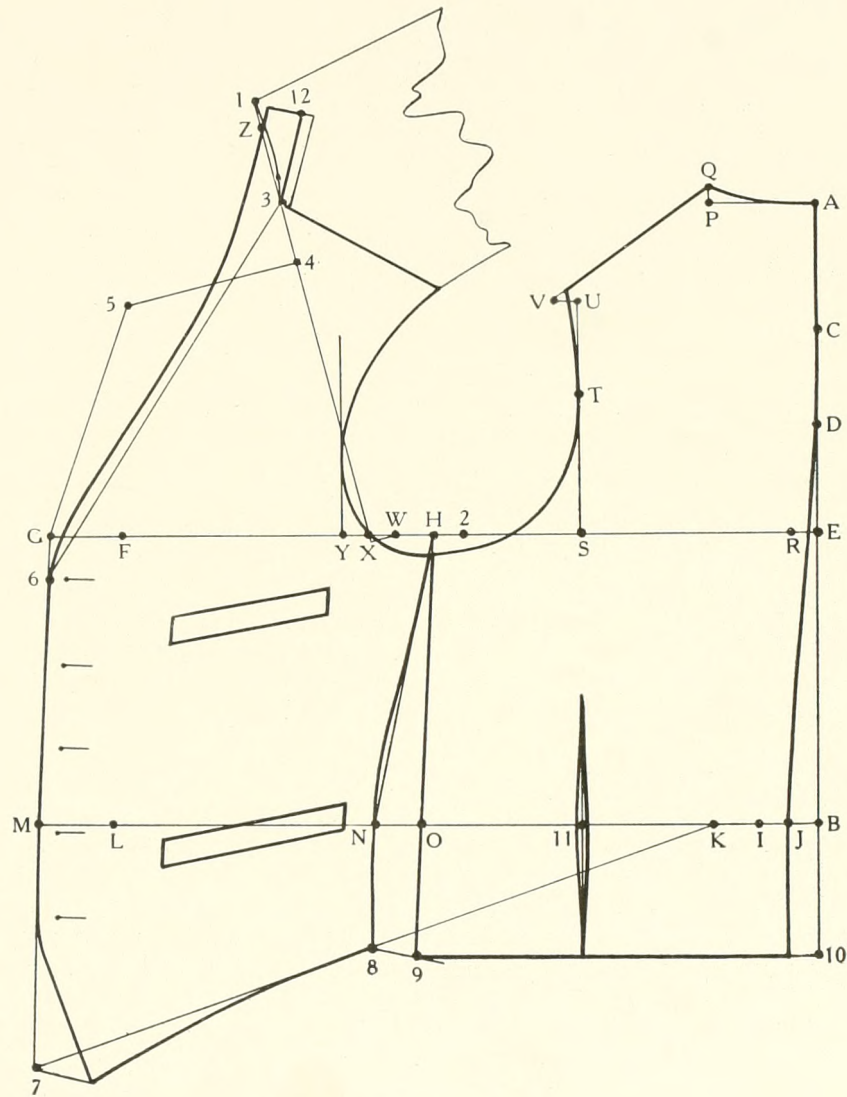


Diagram E



## DIAGRAM F.

## THE TROUSERS.

## The Measures:

Outside length .....	40
Inside length .....	31
Waist .....	33
Seat .....	41
Knee .....	18
Bottom .....	15

NOTE.—To obtain sufficient ease add to seat measure from 1 to 3 inches according to the amount of ease desired. For this diagram 2 inches have been added to the seat measure.

## THE FOREPART.

## TO DRAFT.

- A is the point from which square.  
 B from A is the outside length.  
 C from B is the inside length.  
 D from C is 2 inches less than  $\frac{1}{2}$  of inside length.  
 Square forward from C, D and B.  
 For convenience use  $\frac{1}{2}$  of seat measure ( $20\frac{1}{2}$  inches for this diagram) for all points specified seat.  
 E from A is  $\frac{1}{3}$  seat.  
 F from B is  $\frac{1}{3}$  seat. Draw a line from E to F which establishes points  
 G and  
 H on the lines squared forward from C and D.  
 I from C is  $\frac{1}{2}$  seat. Square up from I which establishes point  
 J on the line squared forward from A.  
 K from I is  $\frac{1}{8}$  seat.  
 L from I is  $\frac{1}{8}$  seat. Square back from L.  
 M from I is  $\frac{1}{3}$  seat. Square forward from M.  
 N from I is  $\frac{1}{24}$  seat.  
 O from C is  $\frac{1}{24}$  seat.  
 P from E is  $\frac{1}{8}$  waist.  
 Q from E is  $\frac{1}{8}$  waist. Draw a line from Q to C which establishes point  
 R on the line squared back from L.  
 S from P is the same distance as between P and J.  
 Draw a line from Q to S and square down thru P by same, which establishes point

T on the line squared forward from M.

Draw lines from T to I and N.

U from K is the same distance as between the lines T-I and T-N at L. Shape to K and U.

V from H is  $\frac{1}{4}$  knee.

W from H is  $\frac{1}{4}$  knee.

X from F is  $\frac{1}{4}$  bottom.

Y from F is  $\frac{1}{4}$  bottom. Shape the outside seam from Q thru R, to O, W and Y and the inside seam from K thru V to X as represented.

Shape from U to a point halfway between U and V. Cut out the forepart.

## THE BACKPART.

Extend the lines back from Q, O, W and Y, also Q-R to re-establish point C.

1 is halfway between E and J. Draw a line thru 1 to I.  
 2 from K is  $\frac{1}{24}$  seat. Shape from a point at L to a point  $\frac{3}{8}$  inch below 2.

3 from 1 is  $\frac{1}{2}$  seat.

4 from 3 is 1 inch for making.

5 from C is 1 inch for making. Draw a line from 4 to 5 and square forward thru 3 guiding by same.

6 from 4 is  $\frac{1}{6}$  seat. Draw a line from 6 to G. Circle from 6 using G as a pivot.

7 from 6 is  $\frac{1}{4}$  inch for each inch that the waist is less than the seat. (2 inches for this diagram.)

Draw a line from 7 to connect with the line 6-G and shape from a point  $\frac{1}{4}$  inch from 6 and 7 as represented.

Square back to 7 guiding by line 1-I and shape to 1.

8 from W is 1 inch for making.

9 from Y is 1 inch for making. Shape from 4 thru 5 and 8 to 9 and from 2 thru V to X as represented. Square to O guiding by line 4-5 for notch below 5.

NOTE: At times it is difficult to obtain the correct rise of trousers as from A to C. A proportion is safer to use than the actual measure. If the proportion which I found reliable is preferred to the actual measure, make from I to A,  $\frac{2}{3}$  of seat.



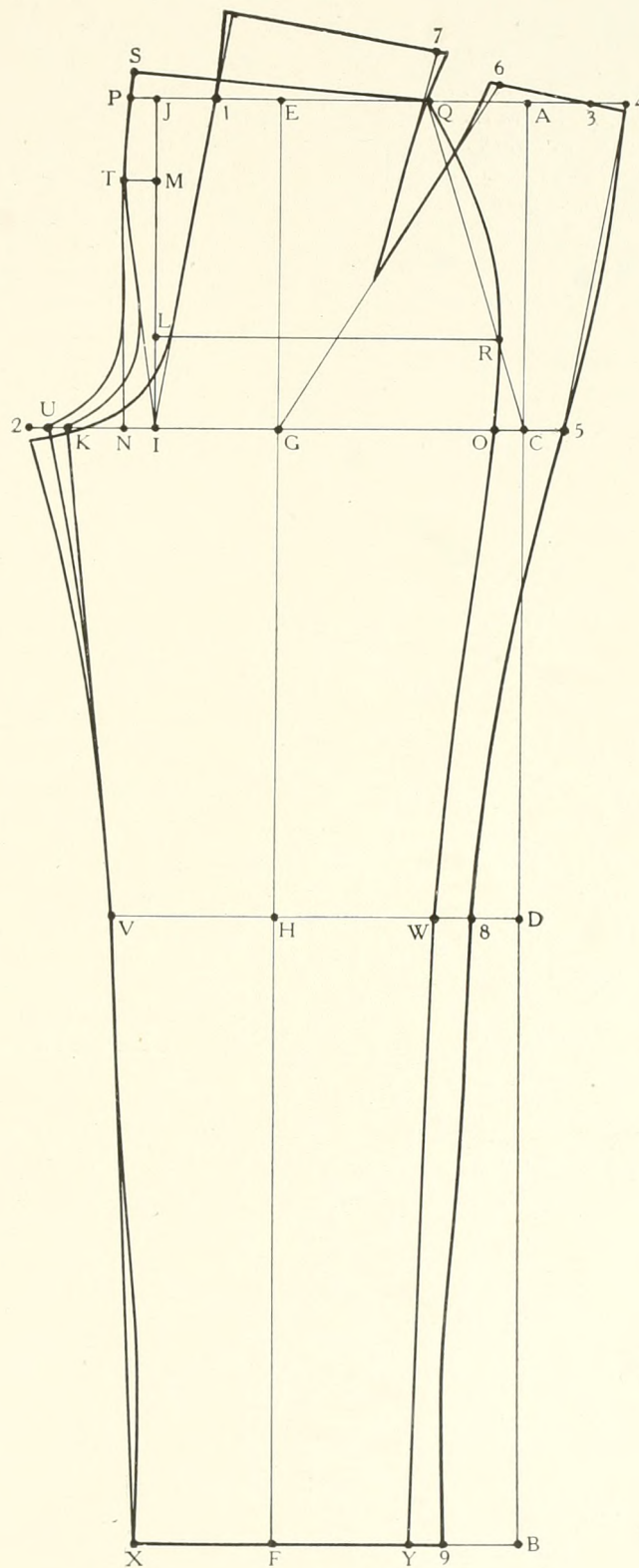


Diagram F



DIAGRAM G.  
THREE-BUTTON SACK, CORPULENT FORM.

## The Measures:

Sleeve under arm.....	17
Long shoulder .....	31½
Short shoulder .....	28
Natural waist .....	17
Length .....	30
Breast .....	48
Waist .....	49
Seat .....	50

NOTE: The long shoulder and the short shoulder measures have been increased 1 inch and the breast, waist and seat measures 2 inches each. (See note to diagram C for explanation.)

## TO DRAFT.

- A is the point from which square.  
 B from A is the natural waist.  
 C from A is the length.  
 D from A is the amount the long shoulder is more than the short shoulder. (3½ inches for this diagram.)  
 For convenience use ½ of short shoulder for all points specified short shoulder.  
 E from D is 1/6 of short shoulder plus the amount as between A and D. (1/6 of 17½ inches.)  
 F from E is ¼ short shoulder. Square forward from F, B and C.  
 G from F is ½ breast.  
 H from G is 2¼ inches.  
 I from H is ¾ inch. (½ the amount desired for lapover.)  
 J from B is 1/24 breast.  
 K from J is ¼ inch for each inch that the waist is more than the breast. (¼ inch for this diagram.)  
 L is halfway between B and K. Draw a line from E to L and square down from L.  
 M from K is ½ waist.  
 N from M is 2¼ inches.  
 O from N is ¾ inch. (½ the amount desired for lapover.) Draw a line from I to O and square down from O.  
 P from A is ¼ short shoulder. Square up from P.  
 Q from P is 1/24 short shoulder. Shape from A to Q.  
 R from F is 1/8 short shoulder.  
 S from R is ½ short shoulder. Square up from S.  
 T from S is 1/8 short shoulder. Square forward from T.  
 U from T is 1/24 short shoulder.  
 V from S is 1/3 short shoulder.  
 W from V is the same distance as between D and E.  
 Draw a line from Q through W and shape from a point ¼ inch from W, to a point ¼ inch from U.  
 X from F is the short shoulder. (14 inches for this diagram.)  
 Y from X is 1¼ inches for making. Square up and down from Y.  
 Z from Y is 1/12 short shoulder.  
 Square up from Y guiding by points X and E.  
 I from Y is the short shoulder. (14 inches for this diagram.)

2 from 1 is ¾ inch for making.

3 from F is the same distance as between A and F, X and Y combined.

Square back from 2 guiding by points 3 and 1.

4 from 1 is 1/3 short shoulder. Square forward from 4.

5 from 4 is 1/8 breast.

6 from L is ½ short shoulder. Draw a line from U to 6.

7 from K is ½ short shoulder.

8 from B is 1/6 seat. Square forward from 8.

9 from 8 is the same distance as between B and 7.

Draw a line from 6 thru 9 and shape to bottom.

10 from 9 is the same distance as between 6 and 7.

Draw a line down from 10, guiding by point 7, which establishes point

11 on the line squared forward from C.

12 from 10 is ¼ inch for each inch that the seat is more than the breast. (½ inch for this diagram.)

Draw a line from a point where the breast line crosses the line U-6, to 7 and from 7 to 12 and from 12 down to parallel the line 10-11.

Shape to 7 and 6 as represented.

Square forward thru 11 guiding by line drawn from 12.

13 from 11 is 1/3 short shoulder. Square forward from 13. Shape at 13.

14 from Y is 2/3 of sleeve under arm less 1 inch (2/3 of 16 inches) and is center of pocket. Draw the pocket opening thru 14 to run parallel with the bottom and make 7 inches in length.

The breast pocket is 1 inch from Y.

15 is in front of pocket. Square down from 15 which establishes

16 on the line squared forward from 13.

17 from O is the same distance as between the waist line and 15.

Draw a line from I to 17 and square by same to 15. Square down from 15 guiding by line last squared.

18 from 15 is the same distance as between 15 and 16. Square forward from 18 by line 15-18.

Draw a line from the armseye to a point at the pocket halfway between 14 and the back end of same.

Cut out the back and place point A at point 2 with the line A-D on the line squared back from 2 by point 3. Mark around same and shape the shoulder as represented.

Shape the neckgorge and armseye as represented.

Establish the buttonholes and draw a crease line from a point 1 inch from the neckgorge to the upper buttonhole. Shape the lapel and front. Cut forepart on line to the pocket, also pocket thru 14 to 15 and fold so that line 15-16 lies on line 15-18.

NOTE: This process of bringing the bottom of coat to the leg must not be employed on square front coats, as the stride is ruined thereby. All corpulent coats should have a V taken out of the canvas at the waist line and the cloth worked in over same.



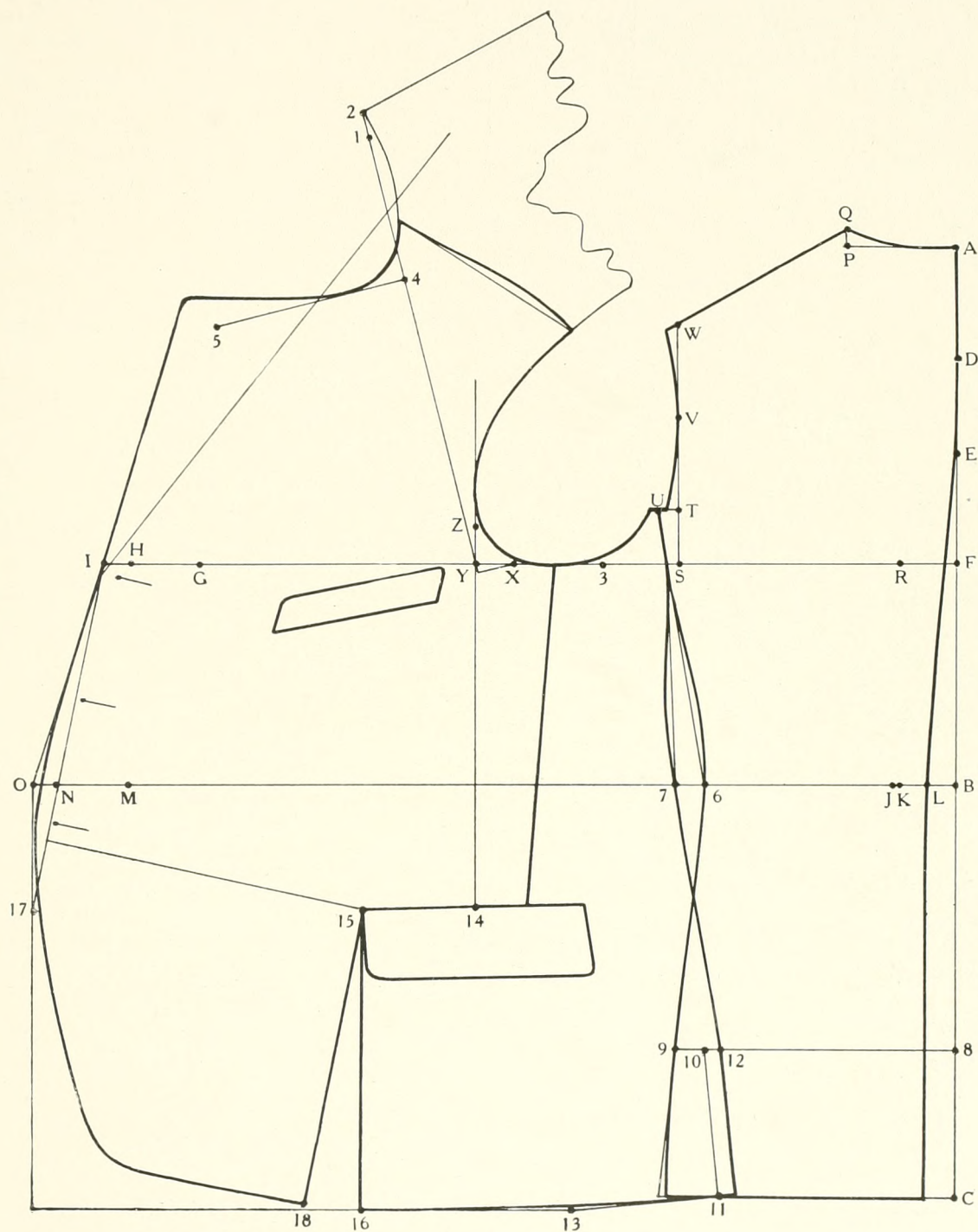


Diagram G



## DIAGRAM H.

## SINGLE-BREASTED VEST, CORPULENT FORM.

## The Measures:

Long shoulder .....	30½
Short shoulder .....	27
Natural waist .....	17
Breast .....	46
Waist .....	47
Opening .....	16½
Length in front .....	29

## TO DRAFT.

- A is the point from which square.  
 B from A is the natural waist.  
 C from A is the amount the long shoulder is more than the short shoulder. (3½ inches for this diagram.)  
 For convenience use ½ of short shoulder for all points specified short shoulder.  
 D from C is 1/6 of short shoulder plus the amount as between A and C. (1/6 of 17 inches.)  
 E from D is ¼ short shoulder. Square forward from E and B.  
 F from E is ½ breast.  
 G from F is 2 inches.  
 H is halfway between G and E.  
 I from B is 1/24 breast.  
 J from I is ¼ inch for each inch that the waist is more than the breast. (¼ inch for this diagram.)  
 K is halfway between J and B. Draw a line from D to K and square down from K.  
 L from J is ½ waist.  
 M from L is 2 inches. Draw a line from G to M. Square down from M.  
 N is halfway between M and J. Draw a line from H thru N and square down from N. Shape at N.  
 NOTE:  
 O and N come together for forms where the waist is as much or more than the breast.  
 P from A is ¼ short shoulder. Square up from P.  
 Q from P is 1/24 short shoulder. Shape from A to Q.  
 R from E is 1/16 short shoulder.  
 S from R is ½ short shoulder. Square up from S.  
 T from S is 1/3 short shoulder.  
 U from T is the same distance as between C and D. Square forward from U.  
 V from U is 1/16 short shoulder. Draw a line from Q to V. Shape the armseye of back from a point ¼ inch from U to a point ½ inch below H.  
 W from E is the short shoulder. (13½ inches for this diagram.)  
 X from W is ¾ inch for making. Square up from X guiding by points W and D.

Y from X is 1/16. Square up from Y.

Z from X is the short shoulder. (13½ inches for this diagram.)

1 from Z is ¾ inch for making.

2 from E is the same distance as between A and E, W and X combined.

Square back from 1 guiding by points Z and 2.

3 from 1 is ¼ short shoulder.

4 from Z is 1/3 short shoulder. Square forward from 4.

5 from 4 is 1/8 breast. Draw a line from 5 to G.

6 from 1 is the opening plus 1 inch, applied from 1 to 3 to 6.

7 from 1 is the length plus 1 inch for making, applied from 1 to 3 to 7. Draw a line from J to 7 which establishes point.

8 on the line squared down from N.

9 from B is the same distance as between N and 8.

Draw a line from 9 thru 8 and square by same toward point S which establishes point

10 on the waist line. Draw a cutout equal in distance less ½ inch, as between J and K, dividing the amount on either side of 10.

Draw the pockets and establish point.

11 1/8 waist from the line squared down from M. Square down from 11.

Square back to 11 guiding by line G-M and square down from 11 by same which establishes point

12 on the line drawn from J to 7.

13 is the same distance from 11 as between 11 and 12.

14 from 8 is ½ inch for making. Draw a line from 14 to 13.

Establish the buttonholes.

Circle from 7 using point 3 as a pivot and shape the front and bottom as represented.

Cut out the back and place point A at 1 with the line A-C on the line squared back from 1 by point 2. Mark around same and shape the armseye to a point ½ inch below H.

Draw a crease line from the shoulder point at 3, to 6 and shape the neckgorge as represented.

15 from the shoulder point at 3 is the same distance less ½ inch as between points 1 and 3.

Square each way from 15. Draw a line to connect with the neckgorge at 4.

Shape the collar and lapel.

NOTE: When cutting the collar of material that requires seaming, make the stand ½ inch wider as represented by the dot and dash line. Cut the pocket opening from N to 11 and fold so that line 11-12 is on line 11-13.

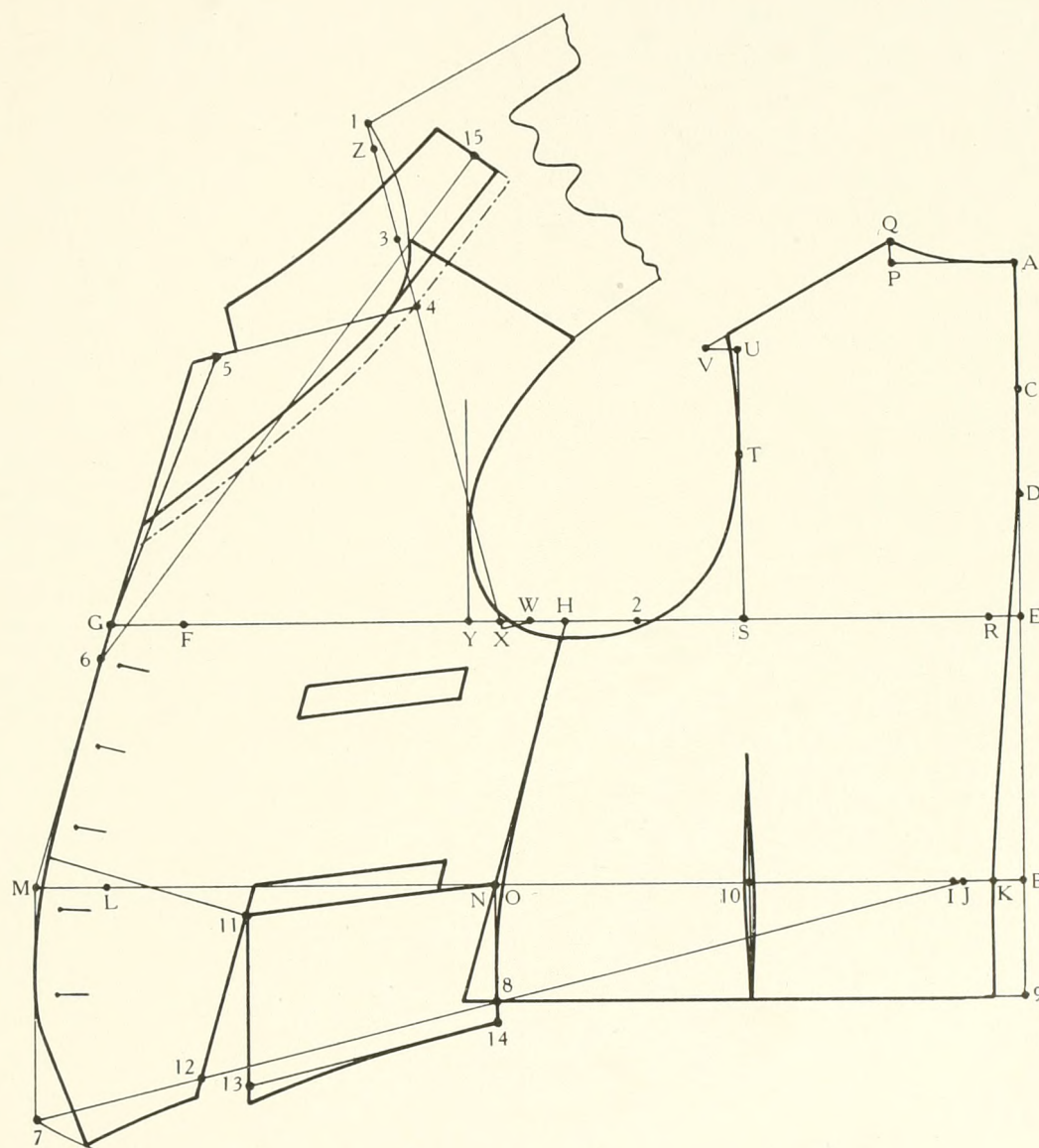


Diagram H



## DIAGRAM I.

## DOUBLE-BREADED BOX OVERCOAT.

## The Measures:

Sleeve under arm .....	18
Long shoulder .....	29½
Short shoulder .....	26
Natural waist .....	17
Length .....	43
Breast .....	44
Waist .....	39
Seat .....	45

NOTE: The long shoulder and short shoulder measures have been increased 3 inches and the breast, waist and seat measures 6 inches each as taken over the vest. (See note to diagram C for explanation.)

## TO DRAFT.

- A is the point from which square.  
 B from A is the natural waist.  
 C from A is the length.  
 D from A is the amount the long shoulder is more than the short shoulder. (3½ inches for this diagram.)  
 For convenience use ½ of short shoulder for all points specified short shoulder.  
 E from D is 1/6 of short shoulder plus the amount as between A and D. (1/6 of 16½ inches.)  
 F from E is ¼ short shoulder. Square forward from F, B and C.  
 G from F is ½ breast.  
 H from G is 1¾ inches.  
 I from H is 3 inches. (½ the amount desired for lap-over.)  
 J from B is 1/24 breast.  
 K is halfway between J and B. Draw a line from E to K and square down from K. Shape at K.  
 L from J is ¼ inch for each inch that the waist is less than the breast. (1¼ inches for this diagram.)  
 M from L is ½ waist.  
 N from M is 1¾ inches.  
 O from N is 3 inches. (½ the amount desired for lap-over.) Draw a line from I to O and square down from O.  
 P from A is ¼ short shoulder. Square up from P.  
 Q from P is 1/24 short shoulder. Shape from A to Q.  
 R from F is ⅛ short shoulder.  
 S from R is ½ short shoulder. Square up from S.  
 T from S is 1/12 short shoulder. Square forward from T.  
 U from T is 1/16 short shoulder.  
 V from S is 1/3 short shoulder.  
 W from V is the same distance as between D and E. Draw a line from Q thru W and shape from a point ¼ inch from W, to a point ¼ inch from U.  
 X from F is the short shoulder. (13 inches for this diagram.)  
 Y from X is ¾ inch for making. Square up and down from Y.

Z from Y is 1/12 short shoulder.

Square up from Y guiding by points X and E.

1 from Y is the short shoulder. (13 inches for this diagram.)

2 from 1 is ¾ inch for making.

3 from F is the same distance as between A and F, X and Y combined.

Square back from 2 guiding by points 3 and 1.

4 from 1 is 1/3 short shoulder. Square forward from 4.

5 from 4 is ⅛ breast.

Square up to U which establishes point

6 on the waist line.

7 from B is 1/6 seat. Square forward from 7.

8 from 7 is the same distance as from K to 6.

Draw a line down from 8 guiding by point 6 which establishes point

9 on the line squared forward from C.

10 from 8 is the same distance as between B and J.

Draw a line from 6 thru 10 to bottom.

11 from 8 is ¼ inch for each inch that the seat is more than the breast. (¼ inch for this diagram.) Draw a line from 6 thru 11 and square by same to 9. Shape at 6.

Square forward from 9 guiding by line 8-9.

12 from 9 is 1/3 short shoulder. Square forward from 12. Shape at 12.

13 from Y is 2/3 of sleeve under arm less 1 inch (2/3 of 17 inches) and is center of pocket. Draw the pocket opening thru 13 to run parallel with the bottom of forepart and make 7 inches in length.

Cut out the back and place point A at point 2 with the line A-D on the line squared back from 2 by point 3. Mark around same and shape the shoulder as represented.

Shape the neckgorge and armseye as represented.

Establish the buttonholes.

14 is established at the hollow part of neckgorge on the forepart.

15 from 14 is 1¼ inch. Draw a line thru 15 to the upper buttonhole.

Shape the lapel and front.

## THE STORM COLLAR.

Circle from 2, using point 14 as a pivot, which establishes point

16 on the crease line.

17 from 16 is the same distance as between 16 and 2.

18 is halfway between 1 and 4. Draw a line from 17 thru 18 and shape as represented.

19 from 17 is the same distance as between 14 and 15. Draw a line from 19 to parallel the line 17-18 and shape to 14 as represented.

20 from 19 is ½ inch. Square up from 20. Make leaf of collar 4 inches wide and shape to taste.

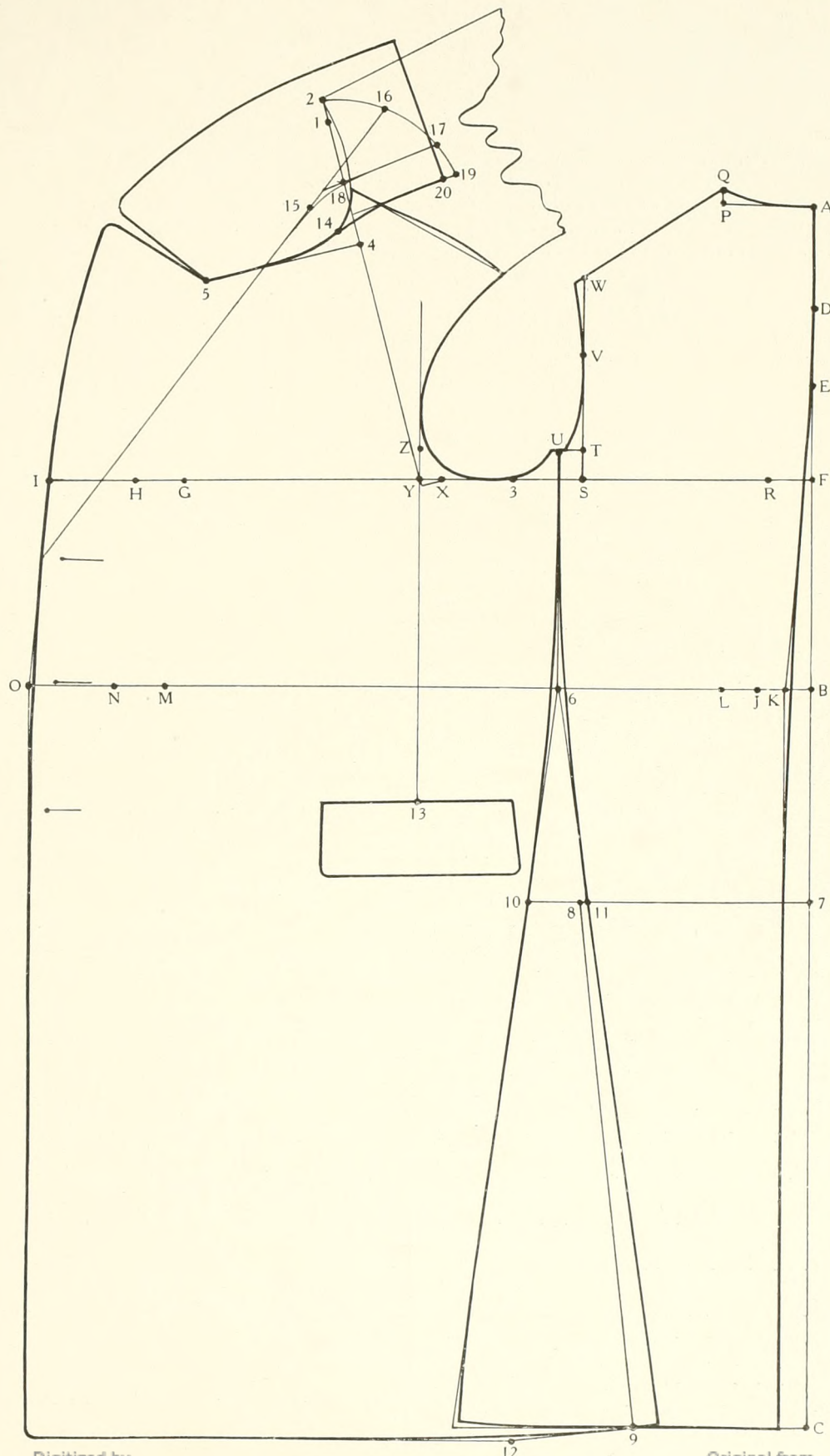


Diagram I



## DIAGRAM J.

## DOUBLE-BREASTED FROCK.

## The Measures:

Long shoulder .....	27½
Short shoulder .....	24
Natural waist .....	17
Fashionable waist .....	18
Length .....	40
Breast .....	40
Waist .....	35
Seat .....	41

NOTE: The long shoulder and short shoulder measures have been increased 1 inch and the breast, waist and seat measures 2 inches each as taken over the vest. (See note to diagram C for explanation.)

## TO DRAFT.

- A is the point from which square.  
 B from A is the natural waist.  
 C from A is ½ inch for making.  
 D from C is the amount the long shoulder is more than the short shoulder. (3½ inches for this diagram.)  
 For convenience use ½ of short shoulder for all points specified short shoulder.  
 E from D is 1/6 of short shoulder, plus the amount as between C and D. (1/6 of 15½ inches.)  
 F from E is ¼ short shoulder. Square forward from F and B.  
 G from A is the fashionable waist.  
 H from A is the length. Square forward from G and H.  
 I from F is ½ breast.  
 J from I is 2¼ inches.  
 K from B is 1/24 breast.  
 L is halfway between K and B. Draw a line from E to L and square down from L.  
 M from K is ¼ inch for each inch that the waist is less than the breast. (1¼ inches for this diagram.)  
 N from M is ½ waist.  
 O from N is 2¼ inches. Draw a line thru J and O and square down from O.  
 P from A is ¼ short shoulder. Square up from P.  
 Q from P is 1/24 short shoulder. Shape from A to Q.  
 R from F is ⅛ short shoulder.  
 S from R is ½ short shoulder. Square up from S.  
 T from S is 1/12 short shoulder. Square forward from T.  
 U from S is 1/3 short shoulder. Square forward from U.  
 V from U is ½ inch for making.  
 W from V is the same distance as between D and E.  
 Draw a line from Q thru W and shape from a point ¼ inch from W to U.  
 X from F is the short shoulder. (12 inches for this diagram.)  
 Y from X is 1¼ inches for making. Square up from Y.  
 Z from Y is 1/12 short shoulder.  
 Square up from Y guiding by points X and E.  
 1 from Y is the short shoulder. (12 inches for this diagram.)  
 2 from 1 is ¾ inch for making.  
 3 from F is the same distance as between C and F, X and Y combined.

- Square back from 2, guiding by points 3 and 1.  
 4 from 1 is 1/3 short shoulder. Square forward from 4.  
 5 from 4 is ⅛ breast. Draw a line from 5 to J.  
 6 from K is ⅛ short shoulder. Square down from 6.  
 7 from F is 1/3 short shoulder. Shape from U thru 7 to 6.  
 8 from U is ½ inch for making.  
 9 from 6 is the same distance as between K and L.  
 10 from 6 is 1/6 seat plus ½ inch for making. Square back from 10.  
 11 from 10 is the same distance as between L and B.  
 Draw a line down from 11, guiding by point 6.  
 12 from 11 is ¼ inch for each inch that the seat is more than the breast. (¼ inch for this diagram.)  
 Draw a line down from 12 to parallel the line drawn down from 11.  
 Draw a line from 9 to 12 and shape at 12. Shape from 8 thru 7 to 9.  
 13 from 9 is the same distance as between B and G, plus ¾ inch for making.  
 14 from 13 is the same distance as between G and H, plus ¼ inch for making. Square forward thru 14.  
 15 from 14 is 1/3 short shoulder. Square forward from 15. Shape at 15.  
 16 from T is ⅛ short shoulder. Shape from 8 to a point ¼ inch from 16.  
 17 from 9 is 1/3 short shoulder. Shape from 16 thru 17.  
 18 from 17 is ½ of the distance as between K and M. Shape from 16 thru 18 as represented.  
 Square back from 13 guiding by line E-L which establishes point  
 19 on the line shaped thru 17.  
 20 is the same distance from 18 as from 17 to 19.  
 21 from O is 1/12 breast. Draw a line from 20 to 21. Shape at 21 as represented.  
 Square forward from a point to which forepart was shaped guiding by line J-O. Make rever the desired width and shape.  
 22 from 21 is ½ inch less than the bottom width of rever. Square down from 22.  
 23 from J is the same distance as between 5 and J and is located ½ inch from the line J-O.  
 Shape at J and from 23 to J as represented.  
 Square toward the center of breast guiding by line 20-21 and draw a cutout to equal the amount when made, as between 17 and 18.  
 Cut out the back and place point A at point 2 with the line A-D on the line squared back from 2 by point 3. Mark around same and shape the shoulder as represented.  
 Shape the neckgorge and armseye as represented.  
 Establish the buttonholes.  
 Draw a crease line from a point 1¼ inches from the neckgorge to the upper buttonhole as represented.  
 Shape the lapel to taste.  
 The dot and dash lines are ¾ inch from J and O and represent the cutaway frock.



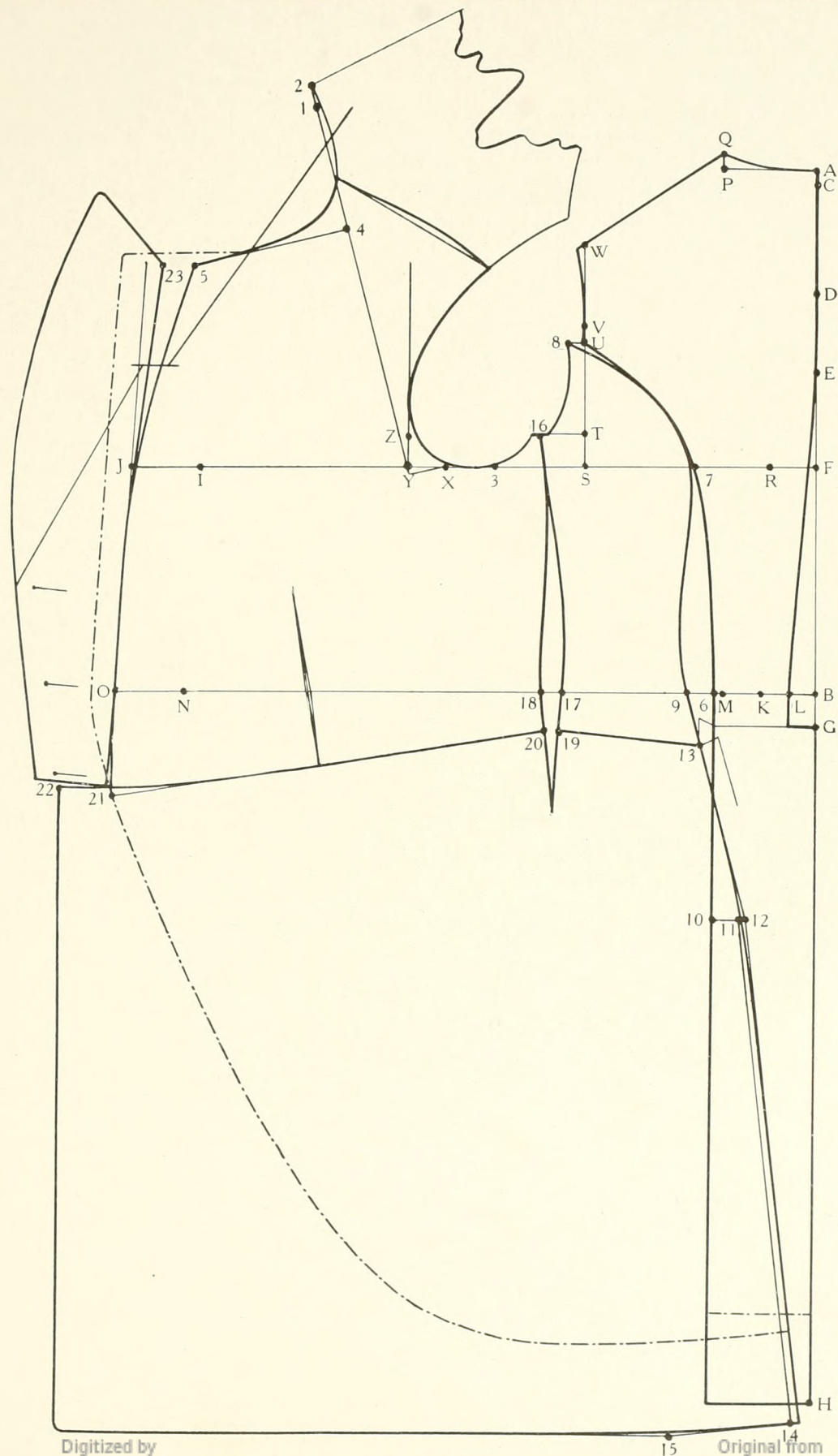




DIAGRAM K.  
DRESS COAT.

## The Measures:

Long shoulder .....	27½
Short shoulder .....	24
Natural waist .....	17
Fashionable waist .....	18
Length .....	39
Breast .....	40
Waist .....	35
Seat .....	41
Vest length in front .....	26½

NOTE: The long shoulder and short shoulder measures have been increased 1 inch and the breast, waist and seat measures 2 inches each as taken over the vest. (See note to diagram C. for explanation.)

## TO DRAFT.

- A is the point from which square.  
 B from A is the natural waist.  
 C from A is ½ inch for making.  
 D from C is the amount the long shoulder is more than the short shoulder. (3½ inches for this diagram.)  
 For convenience use ½ of short shoulder for all points specified short shoulder.  
 E from D is 1/6 of short shoulder plus the amount as between C and D (1/6 of 15½ inches).  
 F from E is ¼ short shoulder. Square forward from F and B.  
 G from A is the fashionable waist.  
 H from A is the length. Square forward from G and H.  
 I from F is ½ breast.  
 J from I is 2¼ inches.  
 K from B is 1/24 breast.  
 L is halfway between K and B. Draw a line from E to L and square down from L.  
 M from K is ¼ inch for each inch that the waist is less than the breast. (1¼ inches for this diagram.)  
 N from M is ½ waist.  
 O from N is 2¼ inches. Draw a line thru J to O and square down from O.  
 P from A is ¼ short shoulder. Square up from P.  
 Q from P is 1/24 short shoulder. Shape from A to Q.  
 R from F is ⅛ short shoulder.  
 S from R is ½ short shoulder. Square up from S.  
 T from S is 1/12 short shoulder. Square forward from T.  
 U from S is 1/3 short shoulder. Square forward from U.  
 V from U is ½ inch for making.  
 W from V is the same distance as between D and E. Draw a line from Q thru W and shape from a point ¼ inch from W to U.  
 X from F is the short shoulder. (12 inches for this diagram.)  
 Y from X is 1¼ inches for making. Square up from Y.  
 Z from Y is 1/12 short shoulder.  
 Square up from Y guiding by points X and E.  
 1 from Y is the short shoulder. (12 inches for this diagram.)  
 2 from 1 is ¾ inch for making.  
 3 from F is the same distance as between C and F, X and Y combined.

- Square back from 2 guiding by points 3 and 1.  
 4 from 1 is 1/3 short shoulder. Square forward from 4.  
 5 from 4 is ⅛ breast.  
 6 from K is ⅛ short shoulder. Square down from 6.  
 7 from F is 1/3 short shoulder. Shape from U thru 7 to 6.  
 8 from U is ½ inch for making.  
 9 from 6 is the same distance as between K and L.  
 10 from 6 is 1/6 seat plus ½ inch for making. Square back from 10.  
 11 from 10 is the same distance as between L and B.  
 Draw a line down from 11 guiding by point 6.  
 12 from 11 is ¼ inch for each inch that the seat is more than the breast. (¼ inch for this diagram.)  
 Draw a line down from 12 to parallel the line drawn down from 11.  
 Draw a line from 9 to 12 and shape at 12.  
 Shape from 8 thru 7 to 9.  
 13 from 9 is the same distance as between B and G plus ¾ inch for making.  
 14 from 13 is the same distance as between G and H plus ¼ inch for making. Square forward from 14.  
 15 from 14 is 1/3 waist.  
 16 from T is ⅛ short shoulder. Shape from 8 to a point ¼ inch from 16.  
 17 from 9 is 1/3 short shoulder. Shape from 16 thru 17.  
 18 from 17 is ½ of the distance as between K and M. Shape from 16 thru 18 as represented. Square back from 13 guiding by line E-L which establishes point.  
 19 On the line shaped thru 17.  
 20 is the same distance from 18 as from 17 to 19.  
 21 from 2 is ¼ short shoulder.  
 22 from 2 is the vest length in front plus 1 inch for making, applied from 2 to 21 down to 22.  
 Draw a line from M to 22.  
 Draw a line to parallel line M-22 and 1¼ inches from same.  
 Square forward from 20 and shape as represented. Establish the length of lapel and shape the front. Establish the buttonholes.  
 23 from O is 1/6 waist. Square up thru 23 guiding by line M-22 which establishes point.  
 24 On the line drawn from M to 22. Draw a line from 24 to 15.  
 Draw a cutout to equal the amount when made, as between 17 and 18 and shape the front of the skirt as represented.  
 Cut out the back and place point A at point 2 with the line A-D on the line squared back from 2 by point 3. Mark around same and shape the shoulder. Shape the neckgorge and armseye as represented.  
 25 On the line J-O is the same distance from J as 5. Square down from a point ½ inch from 5. Draw a cutout equal in distance less 1 inch as between 5 and 25.  
 Draw a crease line from a point 1¼ inches from the neckgorge to the upper buttonhole as represented.  
 Shape the lapel.

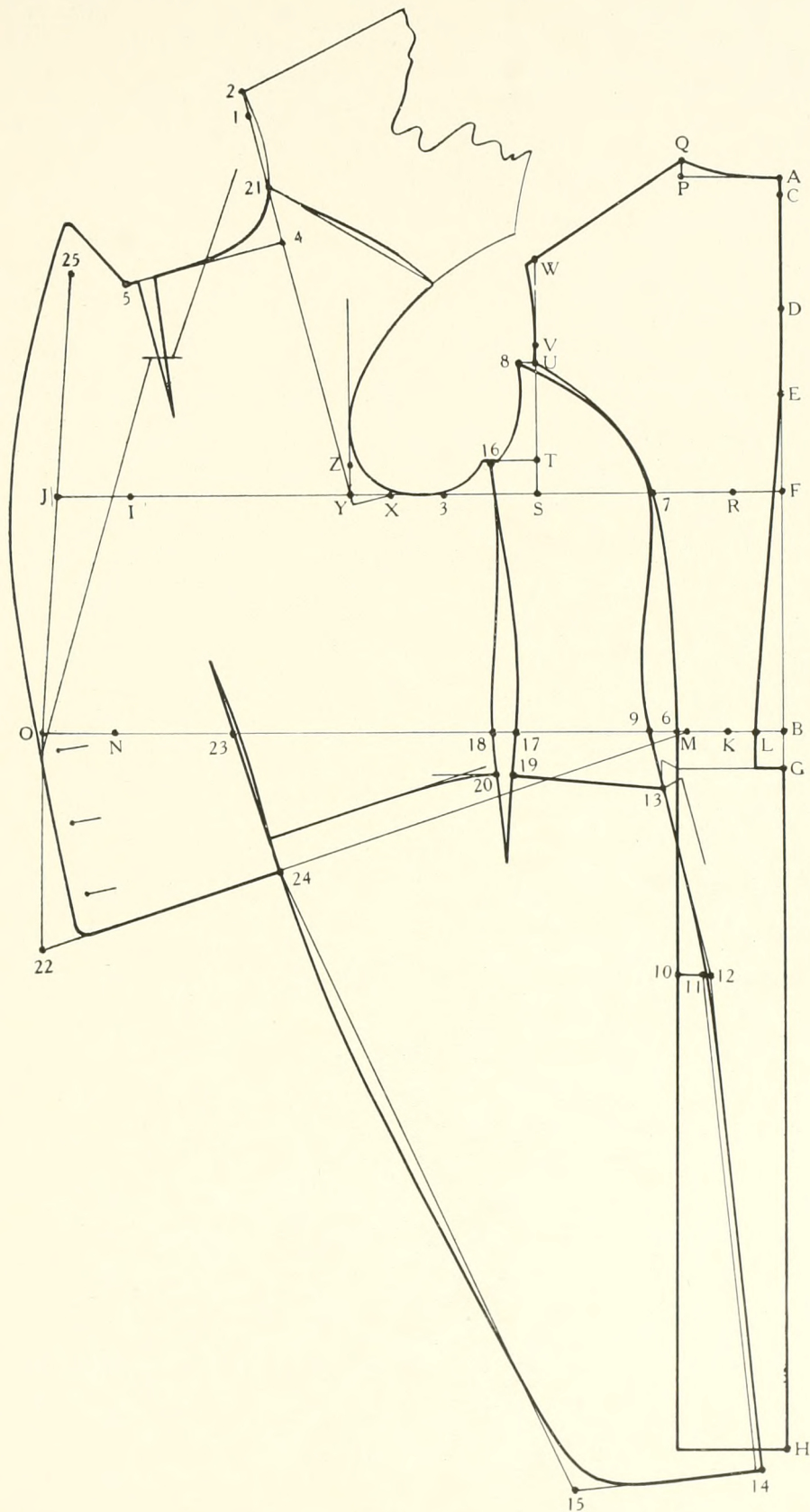


Diagram K











