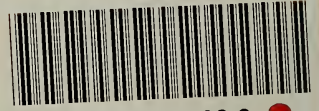


T625

H49

LIBRARY OF CONGRESS



0 014 080 193 8 ●

107 425  
1143

# The Henderson-Ames & Company

Successors to  
Frank Henderson  
& Ames  
Kalamazoo, Mich.  
Sword Camp,  
Chicago.

Manufacturers of



## MILITARY AND BAND UNIFORMS



KALAMAZOO, MICH.

# AWARD.

Our exhibit at the World's Fair was awarded the medal and diploma for super-excellence of quality and design.

To the jury of awards our goods recommended themselves, as they have heretofore to thousands of purchasers, as unequaled by any American manufacturer.

In every article we manufacture is exemplified the taste of an artist combined with the skill of expert workmanship, and as a result we are leaders in designs and pride ourselves on the many competitions we have won.

THE HENDERSON-AMES CO.

List.

No. 18.

15  
9/4/16

# THE HENDERSON-JAMES COMPANY

Designers & Manufacturers of

Uniforms

and

Equipments

for

Bands

Colleges

Military Organizations

Police Departments

Fire Departments

Letter Carriers

G. A. R.

Sons of Veterans

etcetera.

Experto Cede

# KALAMAZOO

# MICH.



77623  
149

---

COPYRIGHT 1893, BY  
THE HENDERSON-AMES CO.

---

## TERMS AND CONDITIONS.

The purchaser is entitled to a liberal discount from quotations in this catalogue, which will be furnished on application.

One-fourth the purchase price should accompany each order.

All shipments will be made C. O. D., with privilege to examine before the goods are taken from the express office.

Freight shipments subject to draft attached to bill of lading cannot be examined before draft is paid, under the established rules of railroad companies.

If small orders are accompanied with remittance it will obviate the expense of return C. O. D. money charges.

We assume no risk or responsibility for damage or delay on freight shipments.

In the absence of instructions to the contrary, all goods will be shipped by express.

Any article or articles found to be inferior to catalogue description, and reported to us in ten days, may be returned and exchanged.

Order by catalogue number, and do not deface the pages by cutting the illustrations.

## PREFACE.

---

In order to maintain the high standard of excellence for which our products have achieved a universal reputation, we appreciate that our patrons should be placed in possession of a catalogue that would enable them to make a thoroughly intelligent selection.

It has been our aim in compiling and illustrating this catalogue to so simplify it that individuals or committees would not be compelled to draw on their imaginations to supply the deficiencies of an inadequate list.

All garments are made to fit the individual after the specifications and measures have been received, consequently the selection of any one coat with its ornamentation as illustrated is not imperative. Any ornament can be replaced by giving the number of such other ornament as may prove more satisfactory. In this way over a thousand different combinations are possible with this list. We have a large corps of traveling salesmen, who carry a full line of samples, always on the road, and we shall be glad to arrange to send one of these to any point if advised of the wants of those desiring to purchase.

THE HENDERSON-AMES CO.



PRICE LIST OF TROUSERS AND STRIPES.

NAME OF CLOTH.	COLOR.	Plain, no stripe.	Better grade work and trimming for officers.	NAME OF CLOTH.	COLOR.	Plain, no stripe.	Better grade work and trimming for officers.
Charlotte ..	Light blue.	\$6 70	\$7 00	Chelsea ....	Black.....	\$6 00	\$6 30
Athens ....	" ...	8 40	8 80	Aurora ....	" .....	8 40	8 80
Cuba .....	" ...	9 75	10 50	Chester ....	" .....	9 00	9 50
Essex .....	" ...	10 50	11 00	Vesta.....	" .....	9 70	10 25
Venice ....	" ...	12 00	13 00	Traverse ...	" .....	10 50	11 00
Oporto ....	" ...	13 00	14 00	BRADFORD.	" .....	10 50	11 00
Sheridan ...	" ...	15 00	16 50	Drexel ....	Gray .....	7 20	7 50
PREMIER ..	" ...	18 00	20 00	Howell ....	" .....	9 00	9 50
York .....	Dark blue .	5 00	5 30	Sumter ....	" .....	10 50	11 00
Ashley ....	" ..	6 70	7 00	Newport ...	" .....	10 50	11 00
Vermont ...	" ..	8 00	8 50	Corea .....	Dark green	10 50	11 00
Jersey .....	" ..	9 00	9 50	Mecca .....	Light green	9 70	10 25
Wabash ...	" ..	9 75	10 25	Syria .....	White ....	9 70	10 25
Dallas .....	" ..	10 50	11 00	Tangier ...	" .....	15 00	16 50
Oakland ...	" ..	11 35	12 00	Coronada ..	Buff .....	9 70	10 25
Harvard ...	" ..	13 40	14 40	Saladin ....	Scarlet....	15 00	16 50
Ætna .....	" ..	15 00	16 50	Carisa .....	Yellow ...	9 70	10 25
MEDINA ...	" ..	18 70	20 00	Belfast ....	Linen.....	9 00	10 00

PANT STRIPES.

Select Pant Stripes and add to price quoted for trousers :

	PER PAIR.	Gilt.	Gold.
Cloth Stripe, any width, any color .....	\$0 75		
Cloth Stripe, edges piped with different color cloth .....	1 80		
Single Stripe, of gold soutache, 1/8 inch wide.....	\$0 25	\$0 40	
Single Stripe, of gold lace, 1/4 inch wide .....	50	80	
Double Stripe, of gold lace, 1/4 inch wide .....	1 00	1 60	
Single Stripe, of gold lace, 1/2 inch wide.....	75	1 20	
Double Stripe, of gold lace, 1/2 inch wide .....	1 50	2 40	
Single Stripe, of gold lace, 1 inch wide.....	1 00	1 80	
Cloth Stripe, edged with 1/8 inch wide gold soutache ....	1 25	1 70	
Cloth Stripe, edged with 1/4 inch wide gold lace.....	2 00	2 60	
Cloth Stripe, edged with 1/2 inch wide gold lace.....	2 40	3 00	
Cloth Stripe, with 1/2 inch gold lace in center.....	1 50	2 00	
Cloth Stripe, with 1 inch gold lace in center.....	2 00	2 50	
Single Gold Cord .....	75	1 25	

## COAT No. 1801.

College Blouse, to be braided with 1 inch wide mohair braid, according to design.

Name of Cloth.		Name of Cloth.	
York,	Dark blue.....	Essex,	Light blue.....
Ashley,	".....	Oporto,	".....
Vermont,	".....	Drexel,	Gray.....
Jersey,	".....	Howell,	".....
Wabash,	".....	Newport,	".....
Dallas,	".....	Sumter,	".....
Oakland,	".....	Chelsea,	Black.....
Harvard,	".....	Aurora,	".....
Ætna,	".....	Chester,	".....
Medina,	".....	Vesta,	".....
Corea,	Dark green.....	Traverse,	".....

## COAT No. 1802.

Blouse, braided around edge with  $\frac{3}{8}$  inch wide mohair braid.

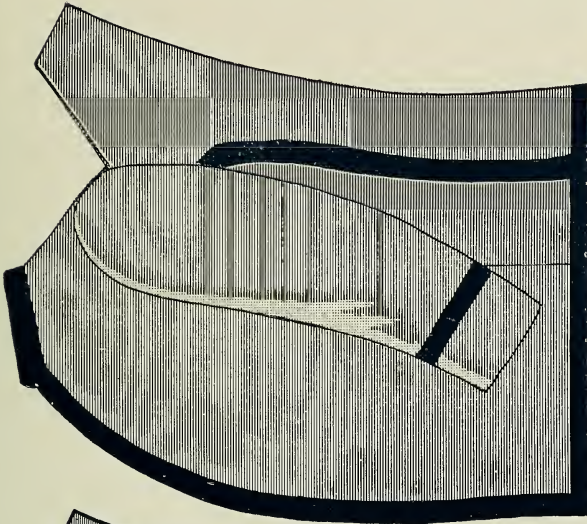
Name of Cloth.		Name of Cloth.	
York,	Dark blue.....	Essex,	Light blue.....
Ashley,	".....	Oporto,	".....
Vermont,	".....	Drexel,	Gray.....
Jersey,	".....	Howell,	".....
Wabash,	".....	Newport,	".....
Dallas,	".....	Sumter,	".....
Oakland,	".....	Chelsea,	Black.....
Harvard,	".....	Aurora,	".....
Ætna,	".....	Chester,	".....
Medina,	".....	Vesta,	".....
Corea,	Dark green.....	Traverse,	".....

## COAT No. 1803.

Plain Blouse, as prescribed by U. S. regulations for enlisted men.

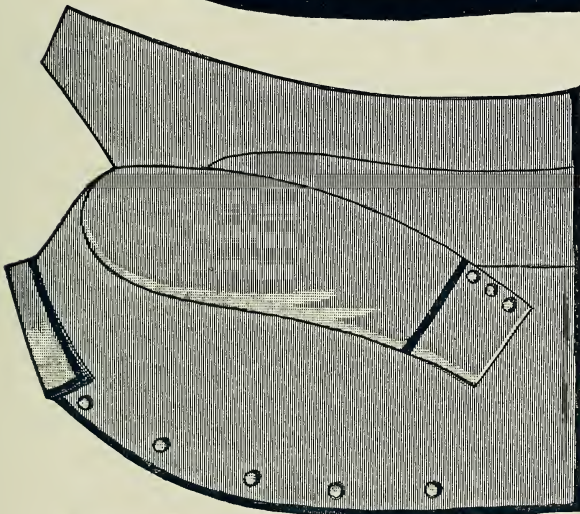
Name of Cloth.		Name of Cloth.	
York,	Dark blue.....	Essex,	Light blue.....
Ashley,	".....	Oporto,	".....
Vermont,	".....	Drexel,	Gray.....
Jersey,	".....	Howell,	".....
Wabash,	".....	Newport,	".....
Dallas,	".....	Sumter,	".....
Oakland,	".....	Chelsea,	Back.....
Harvard,	".....	Aurora,	".....
Ætna,	".....	Chester,	".....
Medina,	".....	Vesta,	".....
Corea,	Dark green.....	Traverse,	".....

## PRICE LIST OF ORNAMENTS.



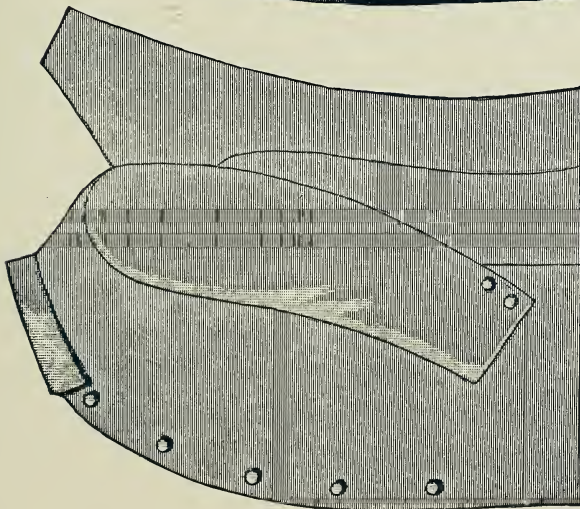
COAT No. 1801.

This Coat is in strict compliance with the U. S. regulations, as prescribed for the U. S. Military Academy at West Point. It is a general favorite as a college Blouse.



COAT No. 1802.

This Coat is braided around the edge and on sleeves with  $\frac{3}{8}$  inch black mohair braid, in compliance with the old U. S. regulation for officers.



COAT No. 1803.

This Coat is perfectly plain, as prescribed for the enlisted men in the U. S. Army.

## COAT No. 1804.

Blouse, to be braided with mohair braid, according to design.

Name of Cloth.		Name of Cloth.	
York,	Dark blue.....	Essex,	Light blue.....
Ashley,	".....	Oporto,	".....
Vermont,	".....	Drexel,	Gray.....
Jersey,	".....	Howell,	".....
Wabash,	".....	Newport,	".....
Dallas,	".....	Sumter,	".....
Oakland,	".....	Chelsea,	Black.....
Harvard,	".....	Aurora,	".....
Ætna,	".....	Chester,	".....
Medina,	".....	Vesta,	".....
Corea,	Dark green.....	Traverse,	".....

## COAT No. 1805.

Blouse, braided with mohair braid, edged with either mohair or gold soutache braid, according to design.

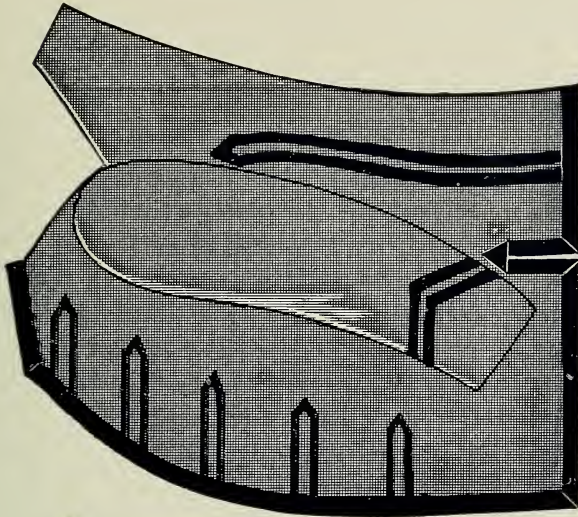
Name of Cloth.		Name of Cloth.	
York,	Dark blue.....	Essex,	Light blue.....
Ashley,	".....	Oporto,	".....
Vermont,	".....	Drexel,	Gray.....
Jersey,	".....	Howell,	".....
Wabash,	".....	Newport,	".....
Dallas,	".....	Sumter,	".....
Oakland,	".....	Chelsea,	Black.....
Harvard,	".....	Aurora,	".....
Ætna,	".....	Chester,	".....
Medina,	".....	Vesta,	".....
Corea,	Dark green.....	Traverse,	".....

## COAT No. 1806.

College Blouse, to be braided with 1 inch mohair braid, according to design.

Name of Cloth.		Name of Cloth.	
York,	Dark blue.....	Essex,	Light blue.....
Ashley,	".....	Oporto,	".....
Vermont,	".....	Drexel,	Gray.....
Jersey,	".....	Howell,	".....
Wabash,	".....	Newport,	".....
Dallas,	".....	Sumter,	".....
Oakland,	".....	Chelsea,	Black.....
Harvard,	".....	Aurora,	".....
Ætna,	".....	Chester,	".....
Medina,	".....	Vesta,	".....
Corea,	Dark green.....	Traverse,	".....

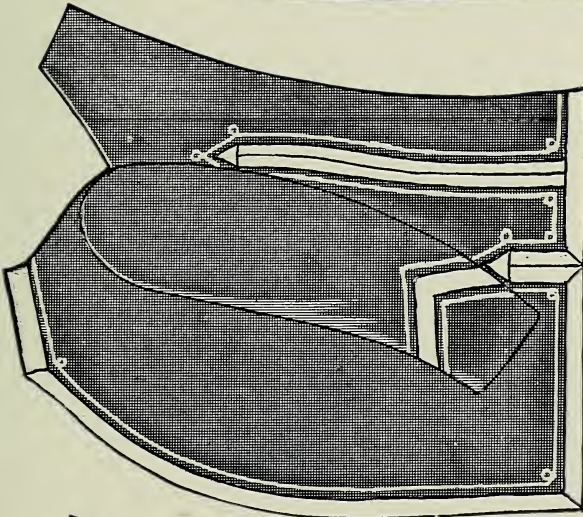
PRICE LIST OF ORNAMENTS.



COAT No. 1804.

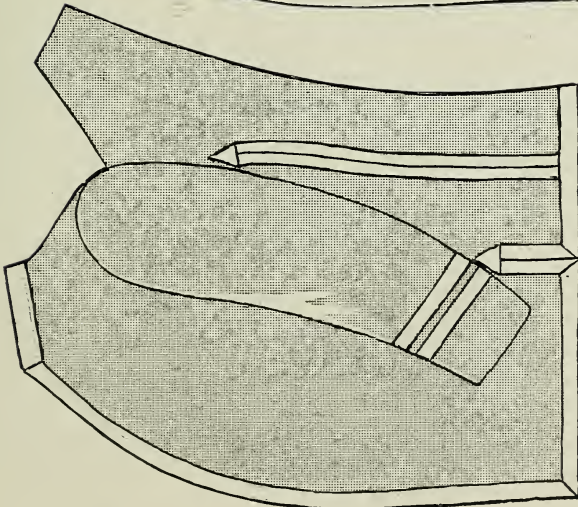
Mohair.

No. 10.	Breast.....	\$1 40
No. 11.	Sleeves.....	40
No. 12.	Backseams .	50



COAT No. 1805.

The ornaments on this Coat being adaptable only to this style, we do not list them separately.



COAT No. 1806.

We do not list the ornaments on this Coat separately, as they are applicable only to this style. This Blouse is a favorite for college uniform.

## COAT No. 1807.

Blouse for bands or military organizations, to be braided with gilt or any color mohair soutache braid.

Name of Cloth.		Name of Cloth.					
York,	Dark blue.....	\$10	40	Essex,	Light blue .....	\$18	75
Ashley,	" .....	11	80	Oporto,	" .....	19	75
Vermont,	" .....	13	00	Drexel,	Gray .....	12	00
Jersey,	" .....	14	55	Howell,	" .....	14	55
Wabash,	" .....	15	50	Newport,	" .....	18	75
Dallas,	" .....	18	75	Sumter,	" .....	18	75
Oakland,	" .....	19	75	Chelsea,	Black .....	11	00
Harvard,	" .....	24	75	Aurora,	" .....	13	50
Ætna,	" .....	26	50	Chester,	" .....	14	55
Medina,	" .....	30	00	Vesta,	" .....	15	50
Corea,	Dark green.....	18	75	Traverse,	" .....	18	75

## COAT No. 1808.

Blouse for bands or military organizations, to be braided with gilt or any color mohair soutache braid.

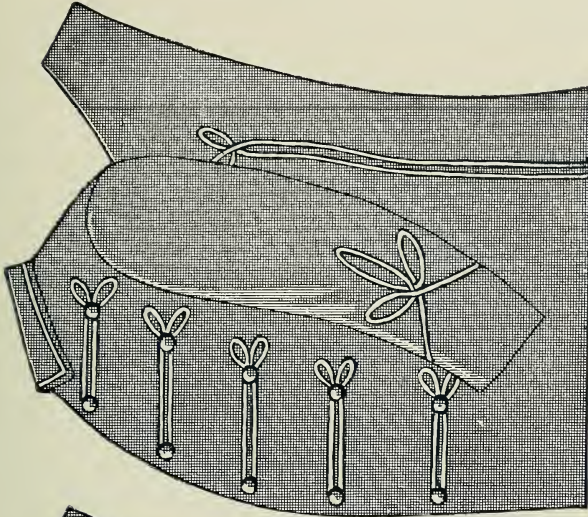
Name of Cloth.		Name of Cloth.					
York,	Dark blue.....	\$10	00	Essex,	Light blue .....	\$18	25
Ashley,	" .....	11	50	Oporto,	" .....	19	25
Vermont,	" .....	12	75	Drexel,	Gray .....	11	75
Jersey,	" .....	14	25	Howell,	" .....	14	25
Wabash,	" .....	15	25	Newport,	" .....	18	25
Dallas,	" .....	18	25	Sumter,	" .....	18	25
Oakland,	" .....	19	25	Chelsea,	Black .....	10	75
Harvard,	" .....	24	50	Aurora,	" .....	13	25
Ætna,	" .....	26	40	Chester,	" .....	14	25
Medina,	" .....	29	75	Vesta,	" .....	15	25
Corea,	Dark green.. .....	18	25	Traverse,	" .....	18	25

## COAT No. 1809.

Blouse for bands or military organizations, to be braided with 1/2 inch mohair braid.

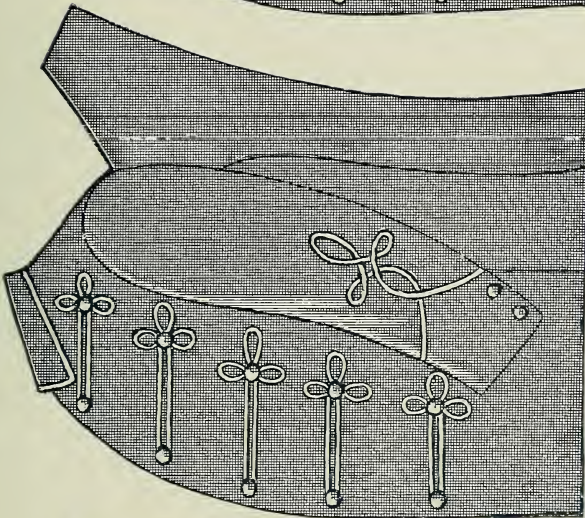
Name of Cloth.		Name of Cloth.					
York,	Dark blue.....	\$10	00	Essex,	Light blue .....	\$18	00
Ashley,	" .....	11	50	Oporto,	" .....	19	00
Vermont,	" .....	12	75	Drexel,	Gray .....	11	75
Jersey,	" .....	14	75	Howell,	" .....	14	75
Wabash,	" .....	15	75	Newport,	" .....	18	00
Dallas,	" .....	18	00	Sumter,	" .....	18	00
Oakland,	" .....	20	00	Chelsea,	Black .....	10	50
Harvard,	" .....	24	25	Aurora,	" .....	13	25
Ætna,	" .....	26	00	Chester,	" .....	14	75
Medina,	" .....	29	50	Vesta,	" .....	15	75
Corea,	Dark green.....	18	00	Traverse,	" .....	18	00

PRICE LIST OF ORNAMENTS.



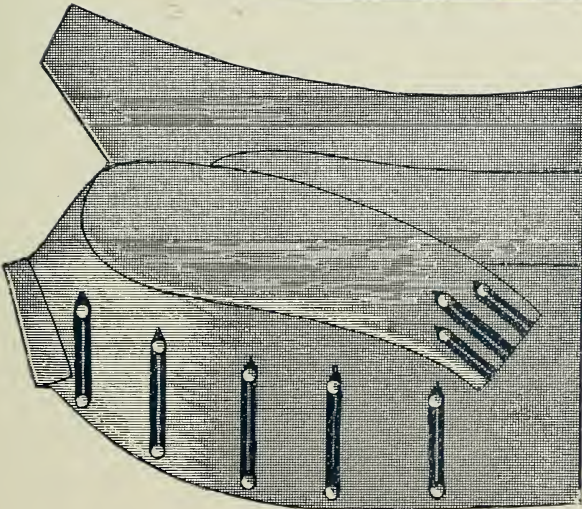
COAT No. 1807.

	Mohair or Gilt.      Gold.	
No. 13. Breast ..	\$1 75	\$2 50
No. 14. Sleeve ..	40	60
No. 15. Backseams.	40	60



COAT No. 1808.

	Mohair or Gilt.      Gold.	
No. 16. Breast ..	\$1 75	\$2 50
No. 17. Sleeve ..	40	60



COAT No. 1809.

	Mohair or Gilt.      Gold.	
No. 18. Breast ..	\$2 00	\$2 75
No. 19. Sleeve ..	40	60

## EXAMPLE SELECTION A.

Coat No. 1812, made of cloth Drexel, trimmed with black mohair braid . .	\$12 25
Trousers to be made of cloth Drexel, with 1 inch wide black stripe . . . . .	7 95
Cap of cloth Drexel, with black band, metal wreath and letters . . . . .	1 75
	<hr/>
	\$21 95

## EXAMPLE SELECTION A-1.

Coat No. 1818, to be made of cloth Ashley and braided with gilt braid. .	\$13 00
Trousers of cloth Ashley, with two $\frac{1}{2}$ inch gilt stripes down the outer seam . . . . .	7 45
Cap of cloth Ashley, with metal wreath and letters . . . . .	2 00
	<hr/>
	\$22 45





A.

BAND UNIFORMS.

A-1.

## COAT No. 1810.

Blouse, for bands or military organizations, to be braided with gilt or any color mohair soutache braid.

Name of Cloth.		Name of Cloth.	
York,	Dark blue.....	Essex,	Light blue.....
Ashley,	".....	Oporto,	".....
Vermont,	".....	Drexel,	Gray.....
Jersey,	".....	Howell,	".....
Wabash,	".....	Newport,	".....
Dallas,	".....	Sumter,	".....
Oakland,	".....	Chelsea,	Black.....
Harvard,	".....	Aurora,	".....
Ætna,	".....	Chester,	".....
Medina,	".....	Vesta,	".....
Corea,	Dark green.....	Traverse,	".....

## COAT No. 1811.

Blouse, for bands or military organizations, to be braided around the edge with 1/2 inch flat mohair braid, and on breast and sleeves with tubular braid or cord.

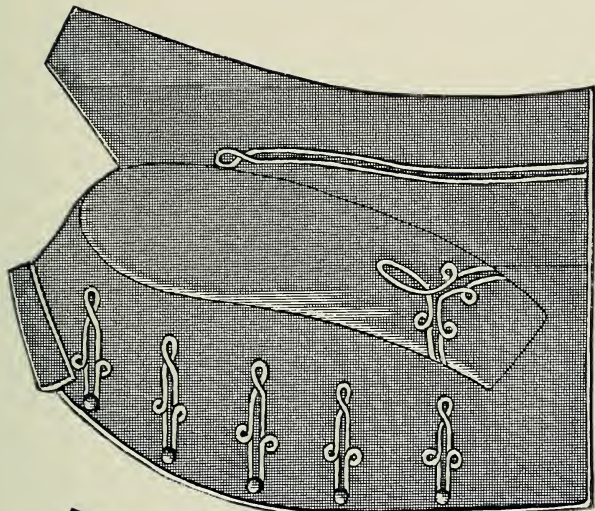
Name of Cloth.		Name of Cloth.	
York,	Dark blue.....	Essex,	Light blue.....
Ashley,	".....	Oporto,	".....
Vermont,	".....	Drexel,	Gray.....
Jersey,	".....	Howell,	".....
Wabash,	".....	Newport,	".....
Dallas,	".....	Sumter,	".....
Oakland,	".....	Chelsea,	Black.....
Harvard,	".....	Aurora,	".....
Ætna,	".....	Chester,	".....
Medina,	".....	Vesta,	".....
Corea,	Dark green.....	Traverse,	".....

## COAT No. 1812.

Blouse, for bands or military organizations, to be braided with 1/2 inch wide, flat mohair braid.

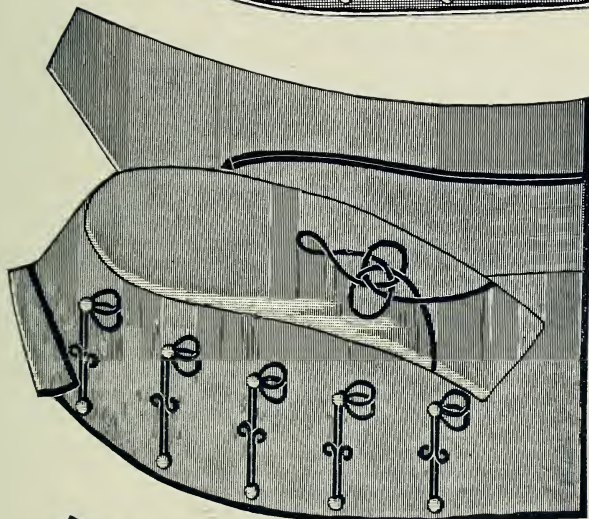
Name of Cloth.		Name of Cloth.	
York,	Dark blue.....	Essex,	Light blue.....
Ashley,	".....	Oporto,	".....
Vermont,	".....	Drexel,	Gray.....
Jersey,	".....	Howell,	".....
Wabash,	".....	Newport,	".....
Dallas,	".....	Sumter,	".....
Oakland,	".....	Chelsea,	Black.....
Harvard,	".....	Aurora,	".....
Ætna,	".....	Chester,	".....
Medina,	".....	Vesta,	".....
Corea,	Dark green.....	Traverse,	".....

PRICE LIST OF ORNAMENTS.



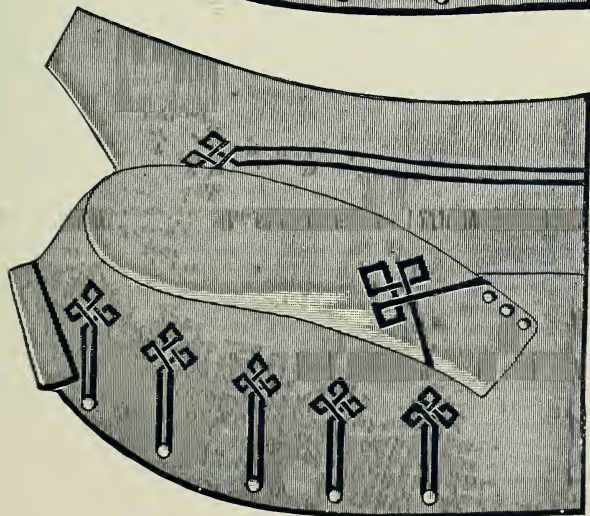
COAT No. 1810.

	Mohair or Gilt.	Gold.
No. 20. Breast ..	\$1 20	\$2 00
No. 21. Sleeve ..	55	90
No. 22. Backseams.	35	60



COAT No. 1811.

	Mohair or Gilt.	Gold.
No. 23. Breast ..	\$3 00	\$3 75
No. 24. Sleeve ..	75	1 00
No. 25. Backseams.	35	60



COAT No. 1812.

	Mohair or Gilt.	Gold.
No. 26. Breast ..	\$1 50	\$2 25
No. 27. Sleeve ..	75	1 00
No. 28. Backseams.	75	1 00

## COAT No. 1813.

Blouse for military organizations or bands, to be braided with narrow gilt or mohair soutache braid.

Name of Cloth.		Name of Cloth.	
York,	Dark blue . . . . .	Essex,	Light blue . . . . . \$17 90
Ashley,	" . . . . .	Oporto,	" . . . . . 18 90
Vermont,	" . . . . .	Drexel,	Gray . . . . . 11 50
Jersey,	" . . . . .	Howell,	" . . . . . 13 75
Wabash,	" . . . . .	Newport,	" . . . . . 17 90
Dallas,	" . . . . .	Sumter,	" . . . . . 17 90
Oakland,	" . . . . .	Chelsea,	Black . . . . . 10 25
Harvard,	" . . . . .	Aurora,	" . . . . . 12 00
Ætna,	" . . . . .	Chester,	" . . . . . 13 75
Medina,	" . . . . .	Vesta,	" . . . . . 15 00
Corea,	Dark green . . . . .	Traverse,	" . . . . . 17 90

## COAT No. 1814.

Blouse for military organizations or bands, to be braided with narrow gilt or mohair soutache braid.

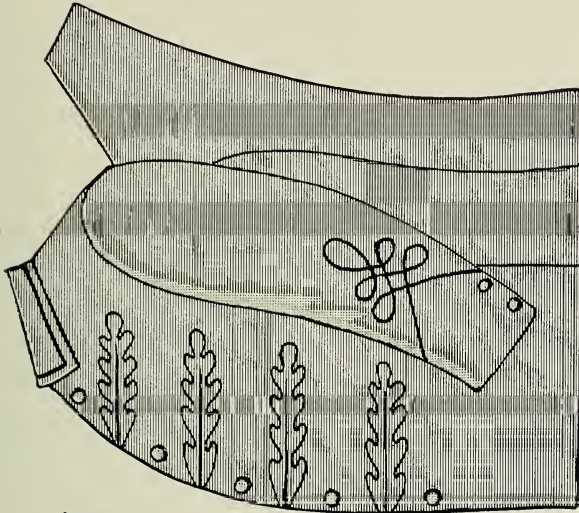
Name of Cloth.		Name of Cloth.	
York,	Dark blue . . . . .	Essex,	Light blue . . . . . \$17 90
Ashley,	" . . . . .	Oporto,	" . . . . . 18 90
Vermont,	" . . . . .	Drexel,	Gray . . . . . 11 50
Jersey,	" . . . . .	Howell,	" . . . . . 13 75
Wabash,	" . . . . .	Newport,	" . . . . . 17 90
Dallas,	" . . . . .	Sumter,	" . . . . . 17 90
Oakland,	" . . . . .	Chelsea,	Black . . . . . 10 25
Harvard,	" . . . . .	Aurora,	" . . . . . 12 00
Ætna,	" . . . . .	Chester,	" . . . . . 13 75
Medina,	" . . . . .	Vesta,	" . . . . . 15 00
Corea,	Dark green . . . . .	Traverse,	" . . . . . 17 90

## COAT No. 1815.

Blouse for military organizations or bands, to be braided with  $\frac{3}{8}$  inch mohair braid.

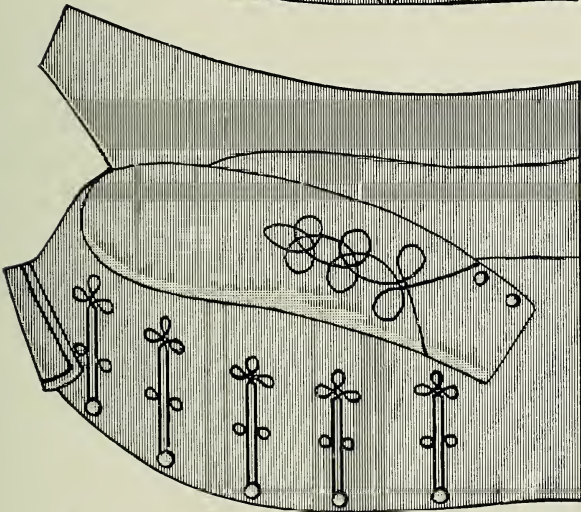
Name of Cloth.		Name of Cloth.	
York,	Dark blue . . . . .	Essex,	Light blue . . . . . \$18 00
Ashley,	" . . . . .	Oporto,	" . . . . . 19 00
Vermont,	" . . . . .	Drexel,	Gray . . . . . 11 60
Jersey,	" . . . . .	Howell,	" . . . . . 15 00
Wabash,	" . . . . .	Newport,	" . . . . . 18 00
Dallas,	" . . . . .	Sumter,	" . . . . . 18 00
Oakland,	" . . . . .	Chelsea,	Black . . . . . 10 60
Harvard,	" . . . . .	Aurora,	" . . . . . 13 00
Ætna,	" . . . . .	Chester,	" . . . . . 15 00
Medina,	" . . . . .	Vesta,	" . . . . . 16 00
Corea,	Dark green . . . . .	Traverse,	" . . . . . 18 00

PRICE LIST OF ORNAMENTS.



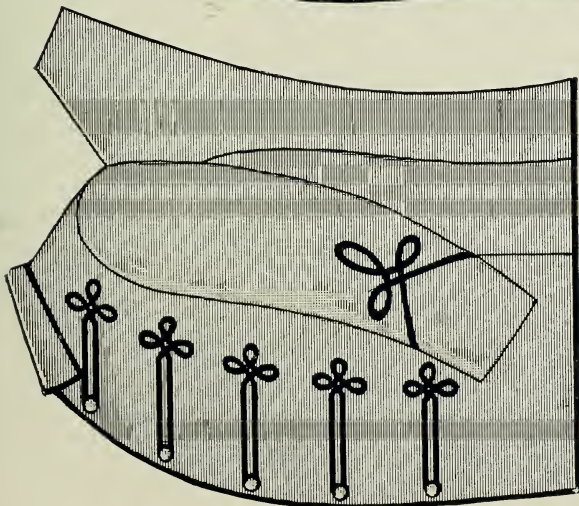
COAT No. 1813.

	Mohair or Gilt.	Gold.
No. 29. Breast ..	\$1 50	\$2 25
No. 30. Sleeve ..	55	90



COAT No. 1814.

	Mohair or Gilt.	Gold.
No. 31. Breast ..	\$1 20	\$1 75
No. 32. Sleeve ..	60	1 00



COAT No. 1815.

	Mohair.	Gold.
No. 33. Breast ..	\$1 75	....
No. 34. Sleeve ..	60	....

## EXAMPLE SELECTION B.

Coat No. 1816, to be made of cloth Chester and braided with white mohair braid . . . . .	\$17 00
Trousers to be made of cloth Chester, with 1½ inch white cloth stripe . . . . .	9 75
Shoulder Knots to be made of white cord. . . . .	2 25
Cap of cloth Chester, with white band and crown, gold embroidery on front . . . . .	4 00
	<hr/>
	\$33 00

## EXAMPLE SELECTION B-1.

Coat No. 1817, of cloth Essex, black cloth facing and wide black mohair braiding, edged with narrow gilt braid. . . . .	\$22 75
Trousers of cloth Essex, 1 inch black cloth stripe, edged with narrow gilt stripe . . . . .	11 75
Cap to be Liberati pattern of cloth Essex, black band and black pipings, embroidered wreath and letters. . . . .	4 00
	<hr/>
	\$38 40



B.

BAND UNIFORMS.

B-1.

## COAT No. 1816.

Blouse for bands, to be braided around the edge with 1 inch mohair braid, and on breast and sleeves with gilt or mohair braid and buttons.

Name of Cloth.		Name of Cloth.	
York,	Dark blue.....	Essex,	Light blue.....
Ashley,	".....	Oporto,	".....
Vermont,	".....	Drexel,	Gray.....
Jersey,	".....	Howell,	".....
Wabash,	".....	Newport,	".....
Dallas,	".....	Sumter,	".....
Oakland,	".....	Chelsea,	Black.....
Harvard,	".....	Aurora,	".....
Ætna,	".....	Chester,	".....
Medina,	".....	Vesta,	".....
Corea,	Dark green.....	Traverse,	".....

## COAT No. 1817.

Blouse for bands, to be braided around edge with 1 inch wide mohair braid, ornaments on breast, sleeves and shoulders to be made of cloth and edged with narrow braid.

Name of Cloth.		Name of Cloth.	
York,	Dark blue.....	Essex,	Light blue.....
Ashley,	".....	Oporto,	".....
Vermont,	".....	Drexel,	Gray.....
Jersey,	".....	Howell,	".....
Wabash,	".....	Newport,	".....
Dallas,	".....	Sumter,	".....
Oakland,	".....	Chelsea,	Black.....
Harvard,	".....	Aurora,	".....
Ætna,	".....	Chester,	".....
Medina,	".....	Vesta,	".....
Corea,	Dark green.....	Traverse,	".....

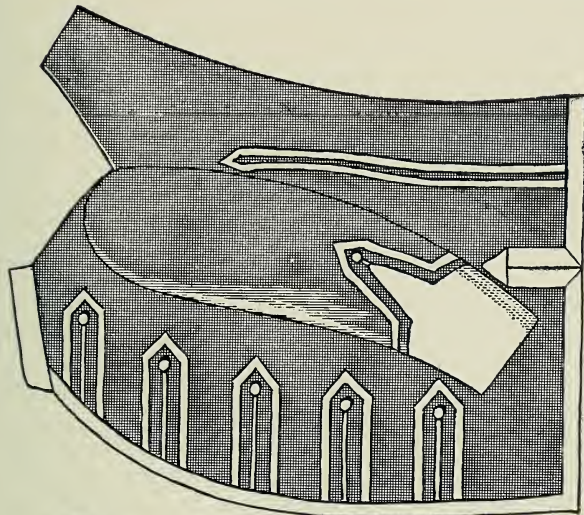
## COAT No. 1818.

Blouse for military organizations or bands, to be braided with gilt or mohair soutache braid.

Name of Cloth.		Name of Cloth.	
York,	Dark blue.....	Essex,	Light blue.....
Ashley,	".....	Oporto,	".....
Vermont,	".....	Drexel,	Gray.....
Jersey,	".....	Howell,	".....
Wabash,	".....	Newport,	".....
Dallas,	".....	Sumter,	".....
Oakland,	".....	Chelsea,	Black.....
Harvard,	".....	Aurora,	".....
Ætna,	".....	Chester,	".....
Medina,	".....	Vesta,	".....
Corea,	Dark green.....	Traverse,	".....

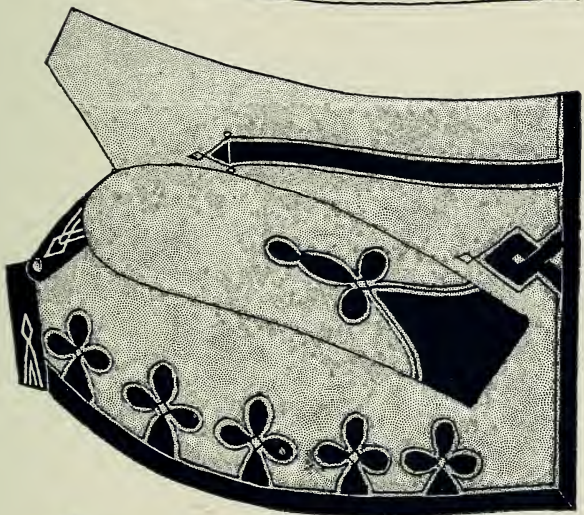


PRICE LIST OF ORNAMENTS.



COAT No. 1816.

		Silk or Mohair.
No. 35.	Breast . . . . .	\$2 75
No. 36.	Sleeve . . . . .	1 50
No. 37.	Collar . . . . .	15
No. 38.	Backseams ..	35



COAT No. 1817.

		Gilt or Mohair.
No. 39.	Breast . . . . .	\$2 25
No. 40.	Sleeve . . . . .	1 80
No. 41.	Collar . . . . .	30
No. 42.	Backseams ..	75
No. 43.	Shoulder Straps.	45



COAT No. 1818.

		Gilt or Mohair.
No. 44.	Breast . . . . .	\$2 75
No. 45.	Sleeve . . . . .	1 00
No. 46.	Backseams ..	45

## COAT No. 1819.

Blouse for bands, to be braided around the edge with  $\frac{1}{2}$  inch mohair braid, on sleeves and back seams with narrow soutache braid and five silk or mohair cord agraffes on breast.

Name of Cloth.		Name of Cloth.	
York,	Dark blue.....	Essex,	Light blue.....
Ashley,	".....	Oporto,	".....
Vermont,	".....	Drexel,	Gray.....
Jersey,	".....	Howell,	".....
Wabash,	".....	Newport,	".....
Dallas,	".....	Sumter,	".....
Oakland,	".....	Chelsea,	Black.....
Harvard,	".....	Aurora,	".....
Ætna,	".....	Chester,	".....
Medina,	".....	Vesta,	".....
Corea,	Dark green.....	Traverse,	".....

## COAT No. 1820.

Blouse for bands, to be braided with  $\frac{1}{2}$  inch wide braid, edged with narrow gilt or mohair soutache, and five silk or mohair agraffes on the breast.

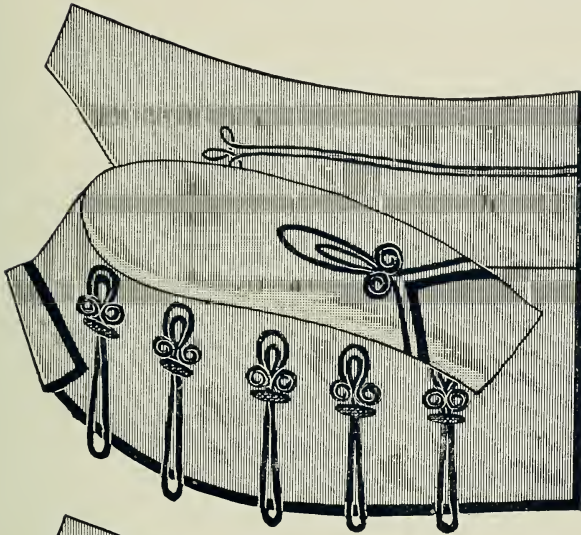
Name of Cloth.		Name of Cloth.	
York,	Dark blue.....	Essex,	Light blue.....
Ashley,	".....	Oporto,	".....
Vermont,	".....	Drexel,	Gray.....
Jersey,	".....	Howell,	".....
Wabash,	".....	Newport,	".....
Dallas,	".....	Sumter,	".....
Oakland,	".....	Chelsea,	Black.....
Harvard,	".....	Aurora,	".....
Ætna,	".....	Chester,	".....
Medina,	".....	Vesta,	".....
Corea,	Dark green.....	Traverse,	".....

## COAT No. 1821.

Blouse for bands, to be braided around edge and on sleeves with  $\frac{3}{8}$  inch wide mohair braid, and five silk or mohair agraffes on the breast.

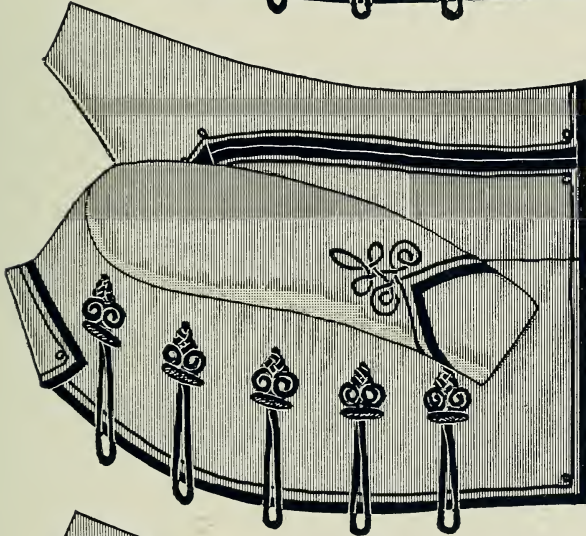
Name of Cloth.		Name of Cloth.	
York,	Dark blue.....	Essex,	Light blue.....
Ashley,	".....	Oporto,	".....
Vermont,	".....	Drexel,	Gray.....
Jersey,	".....	Howell,	".....
Wabash,	".....	Newport,	".....
Dallas,	".....	Sumter,	".....
Oakland,	".....	Chelsea,	Black.....
Harvard,	".....	Aurora,	".....
Ætna,	".....	Chester,	".....
Medina,	".....	Vesta,	".....
Corea,	Dark green.....	Traverse,	".....

PRICE LIST OF ORNAMENTS.



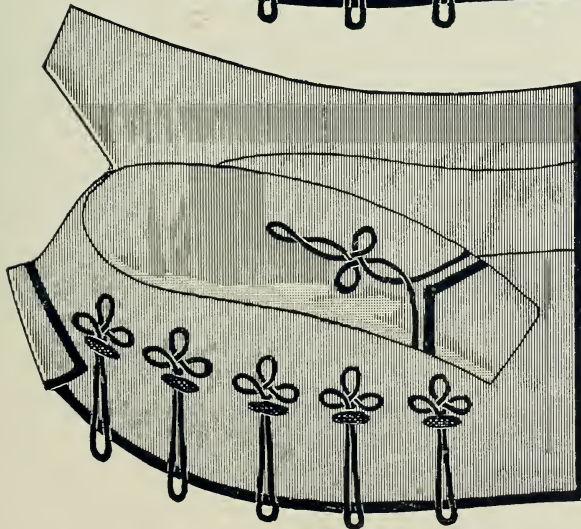
COAT No. 1819.

		Silk or Mohair.
No. 47.	Breast . . . . .	\$2 50
No. 48.	Sleeve . . . . .	60
No. 49.	Backseams ..	40



COAT No. 1820.

		Silk or Mohair.
No. 50.	Breast . . . . .	\$2 75
No. 51.	Sleeve . . . . .	65
No. 51½.	Backseams .	75



COAT No. 1821.

		Silk or Mohair.
No. 52.	Breast . . . . .	\$2 00
No. 53.	Sleeve . . . . .	80

## EXAMPLE SELECTION C.

Coat No. 1824, of white cloth Syria, with black trimmings.....	\$16 75
Trousers of black cloth Bradford, white cloth stripe .....	11 25
Cap of black cloth, gilt band, gilt braiding on seams, and gold embroider- ies on front.....	3 75
	<u>31 75</u>
	\$31 75

## EXAMPLE SELECTION C-1.

Coat No. 1823, of cloth Traverse, with white mohair braiding and olives.	\$23 40
Trousers of cloth Traverse, with white stripe .....	11 25
Cap of black cloth, white crown, with braided pattern ; gold embroideries in front.....	4 00
	<u>38 65</u>
	\$38 65



C.

BAND UNIFORMS.

C-1.

## COAT No. 1822.

Blouse, for bands, to be braided with  $1\frac{1}{4}$  inch wide mohair braid, edged with narrow gilt or mohair soutache braid, and five silk or mohair agraffes on the breast.

Name of Cloth.		Name of Cloth.	
York,	Dark blue.....	Essex,	Light blue.....
Ashley,	".....	Oporto,	".....
Vermont,	".....	Drexel,	Gray.....
Jersey,	".....	Howell,	".....
Wabash,	".....	Newport,	".....
Dallas,	".....	Sumter,	".....
Oakland,	".....	Chelsea,	Black.....
Harvard,	".....	Aurora,	".....
Ætna,	".....	Chester,	".....
Medina,	".....	Vesta,	".....
Corea,	Dark green.....	Traverse,	".....

## COAT No. 1823.

Blouse, for bands, to be braided with 1 inch wide mohair braid.

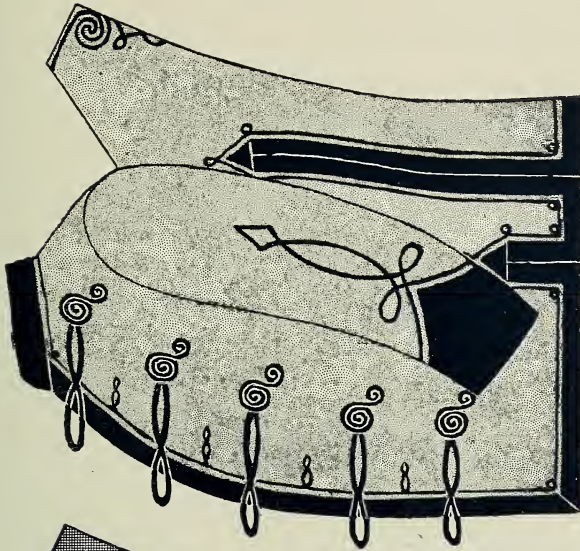
Name of Cloth.		Name of Cloth.	
York,	Dark blue.....	Essex,	Light blue.....
Ashley,	".....	Oporto,	".....
Vermont,	".....	Drexel,	Gray.....
Jersey,	".....	Howell,	".....
Wabash,	".....	Newport,	".....
Dallas,	".....	Sumter,	".....
Oakland,	".....	Chelsea,	Black.....
Harvard,	".....	Aurora,	".....
Ætna,	".....	Chester,	".....
Medina,	".....	Vesta,	".....
Corea,	Dark green.....	Traverse,	".....

## COAT No. 1824.

Blouse, for bands, to be braided with 1 inch wide mohair and narrow soutache braids, and five silk or mohair agraffes on breast.

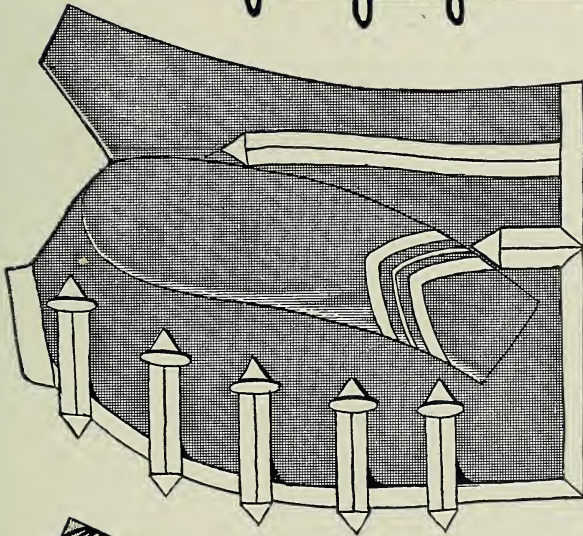
Name of Cloth.		Name of Cloth.	
York,	Dark blue.....	Essex,	Light blue.....
Ashley,	".....	Oporto,	".....
Vermont,	".....	Drexel,	Gray.....
Jersey,	".....	Howell,	".....
Wabash,	".....	Newport,	".....
Dallas,	".....	Sumter,	".....
Oakland,	".....	Chelsea,	Black.....
Harvard,	".....	Aurora,	".....
Ætna,	".....	Chester,	".....
Medina,	".....	Vesta,	".....
Corea,	Dark green.....	Traverse,	".....

PRICE LIST OF ORNAMENTS.



COAT No. 1822.

		Silk or Mohair.
No. 54.	Breast . . . . .	\$2 50
No. 55.	Sleeve . . . . .	80
No. 56.	Collar . . . . .	15
No. 57.	Back of Neck . . . . .	25
No. 58.	Backseams . . . . .	75



COAT No. 1823.

		Silk or Mohair.
No. 59.	Breast . . . . .	\$2 75
No. 60.	Sleeve . . . . .	60
No. 61.	Collar . . . . .	15
No. 62.	Backseams . . . . .	60



COAT No. 1824.

		Silk or Mohair.
No. 63.	Breast . . . . .	\$2 25
No. 64.	Sleeve . . . . .	80
No. 65.	Collar . . . . .	15
No. 66.	Backseams . . . . .	60
No. 67.	Back of Neck . . . . .	25

## EXAMPLE SELECTION D.

Coat No. 1842, cloth Vermont, white cloth facings and white mohair braid.	\$13 50
Trousers, cloth Essex, with gilt stripe . . . . .	11 25
Shoulder Knots of gilt cord . . . . .	3 45
Cap of blue cloth, gilt band and gilt embroideries . . . . .	3 00
	\$31 20

## EXAMPLE SELECTION D-1.

Coat No. 1839, cloth Howell, black mohair braiding . . . . .	\$14 35
Trousers, cloth Howell, with black cloth stripe . . . . .	9 75
Vest, of cloth Coronado . . . . .	6 00
Cap, Liberati pattern, gray cloth, black band, black piping and gilt embroideries . . . . .	4 00
Shoulder Knots, of black cord . . . . .	1 25
	\$35 35





D.

BAND UNIFORMS.

D-1.

## COAT No. 1837.

Cutaway Sack Coat for bands, to be braided with narrow gilt or mohair braid.

Name of Cloth.		Name of Cloth.		
York,	Dark blue.....	\$11 00	Essex, Light blue.....	\$20 00
Ashley,	".....	12 50	Oporto, ".....	21 00
Vermont,	".....	13 60	Drexel, Gray.....	12 75
Jersey,	".....	15 20	Howell, ".....	15 20
Wabash,	".....	16 20	Newport, ".....	20 00
Dallas,	".....	20 00	Sumter, ".....	20 00
Oakland,	".....	21 00	Chelsea Black.....	11 50
Harvard,	".....	26 25	Aurora, ".....	14 00
Ætna,	".....	28 20	Chester, ".....	15 20
Medina,	".....	31 50	Vesta, ".....	16 20
Corea,	Dark green.....	20 00	Traverse, ".....	20 00

## COAT No. 1838.

Cutaway Sack Coat for bands, to be braided around edge with 1 inch wide mohair braid and fancy pattern with narrow gilt or mohair soutache braid.

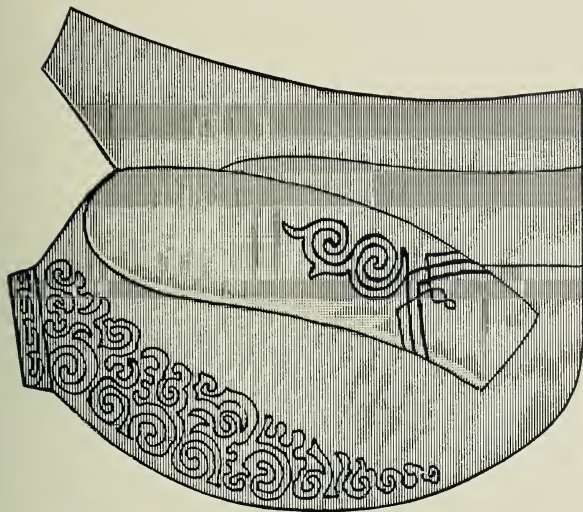
Name of Cloth.		Name of Cloth.		
York,	Dark blue.....	\$10 75	Essex, Light blue.....	\$19 80
Ashley,	".....	12 25	Oporto, ".....	20 80
Vermont,	".....	13 30	Drexel, Gray.....	12 50
Jersey,	".....	14 90	Howell, ".....	14 90
Wabash,	".....	15 90	Newport, ".....	19 80
Dallas,	".....	19 80	Sumter, ".....	19 80
Oakland,	".....	20 75	Chelsea, Black.....	11 25
Harvard,	".....	26 00	Aurora, ".....	13 80
Ætna,	".....	27 80	Chester, ".....	14 90
Medina,	".....	31 50	Vesta, ".....	15 90
Corea,	Dark green.....	19 80	Traverse, ".....	19 80

## COAT No. 1839.

Cutaway Sack Coat for bands, to be braided around the edge with 1/2 inch wide mohair braid and fancy pattern of narrow gilt or mohair soutache braid.

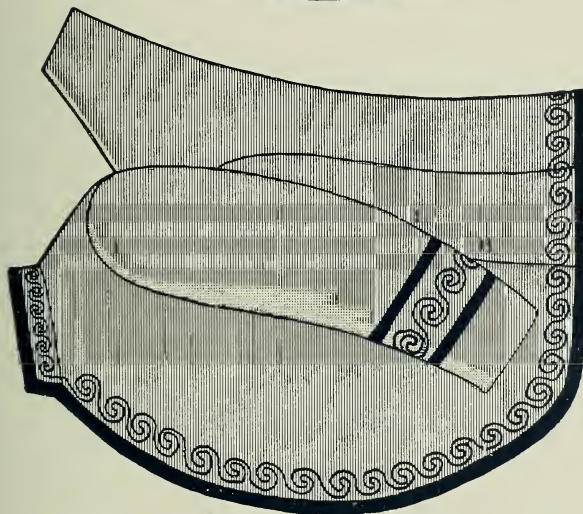
Name of Cloth.		Name of Cloth.		
York,	Dark blue.....	\$10 25	Essex, Light blue.....	\$19 00
Ashley,	".....	11 60	Oporto, ".....	20 00
Vermont,	".....	12 75	Drexel, Gray.....	11 80
Jersey,	".....	14 35	Howell, ".....	14 35
Wabash,	".....	15 30	Newport, ".....	19 00
Dallas,	".....	19 00	Sumter, ".....	19 00
Oakland,	".....	20 00	Chelsea, Black.....	10 75
Harvard,	".....	25 20	Aurora, ".....	13 25
Ætna,	".....	27 25	Chester, ".....	14 35
Medina,	".....	30 40	Vesta, ".....	15 30
Corea,	Dark green.....	19 00	Traverse, ".....	19 00

PRICE LIST OF ORNAMENTS.



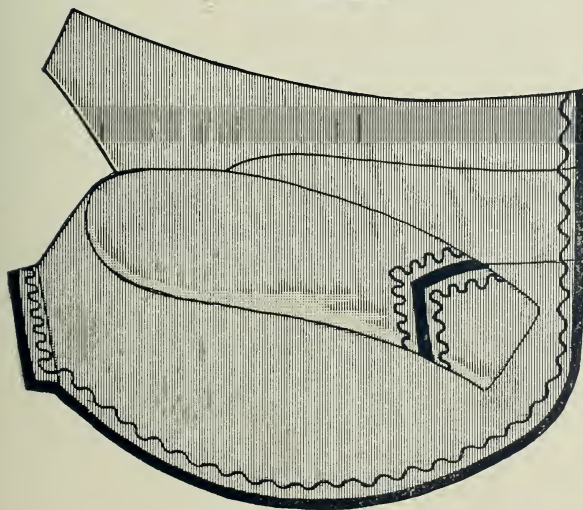
COAT No. 1837.

	Mohair or Gilt.	Gold.
No. 85. Breast ..	\$2 00	\$3 25
No. 86. Sleeve ..	75	1 20
No. 87. Collar ..	30	50



COAT No. 1838.

	Mohair or Gilt.	Gold.
No. 88. Sleeve ..	\$0 75	\$1 20
No. 89. Collar ..	35	55



COAT No. 1839.

	Mohair or Gilt.	Gold.
No. 90. Sleeve ..	\$0 75	\$1 20
No. 91. Collar ..	30	45

## COAT No. 1840.

Cutaway Sack Coat for bands, to be braided with narrow gilt or mohair soutache braid.

Name of Cloth.		Name of Cloth.	
York,	Dark blue.....	Essex,	Light blue.....
Ashley,	" .....	Oporto,	" .....
Vermont,	" .....	Drexel,	Gray .....
Jersey,	" .....	Howell,	" .....
Wabash,	" .....	Newport,	" .....
Dallas,	" .....	Sumter,	" .....
Oakland,	" .....	Chelsea,	Black .....
Harvard,	" .....	Aurora,	" .....
Ætna,	" .....	Chester,	" .....
Medina,	" .....	Vesta,	" .....
Corea,	Dark green.....	Traverse	" .....

## COAT No. 1841.

Cutaway Sack Coat for bands, to be braided with narrow gilt or mohair soutache braid.

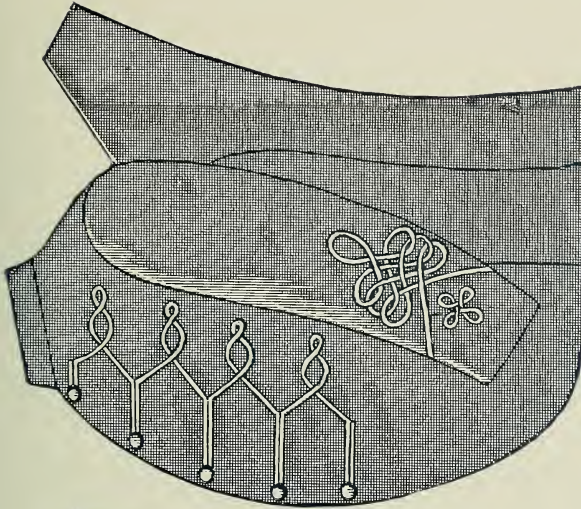
Name of Cloth.		Name of Cloth.	
York,	Dark blue.....	Essex,	Light blue.....
Ashley,	" .....	Oporto,	" .....
Vermont,	" .....	Drexel,	Gray .....
Jersey,	" .....	Howell,	" .....
Wabash,	" .....	Newport,	" .....
Dallas,	" .....	Sumter,	" .....
Oakland,	" .....	Chelsea,	Black.....
Harvard,	" .....	Aurora,	" .....
Ætna,	" .....	Chester,	" .....
Medina,	" .....	Vesta,	" .....
Corea,	Dark green.....	Traverse,	" .....

## COAT No. 1842.

Cutaway Sack Coat for bands, to be braided with 1/2 inch mohair braid, fancy cloth collar and cuffs.

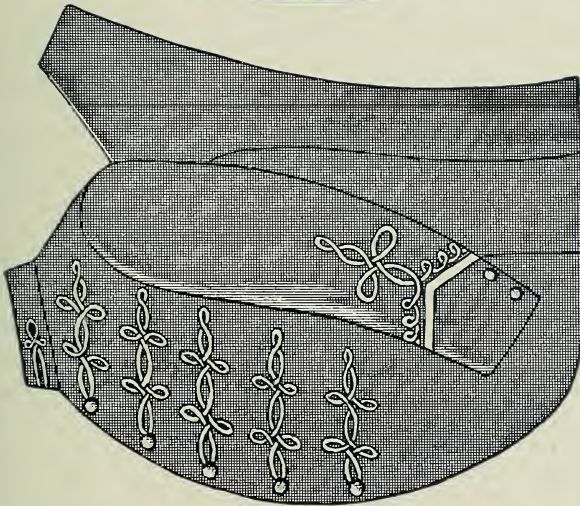
Name of Cloth.		Name of Cloth.	
York,	Dark blue.....	Essex,	Light blue.....
Ashley,	" .....	Oporto,	" .....
Vermont,	" .....	Drexel,	Gray .....
Jersey,	" .....	Howell,	" .....
Wabash,	" .....	Newport,	" .....
Dallas,	" .....	Sumter,	" .....
Oakland,	" .....	Chelsea,	Black.....
Harvard,	" .....	Aurora,	" .....
Ætna,	" .....	Chester,	" .....
Medina,	" .....	Vesta,	" .....
Corea,	Dark green .....	Traverse,	" .....

PRICE LIST OF ORNAMENTS.



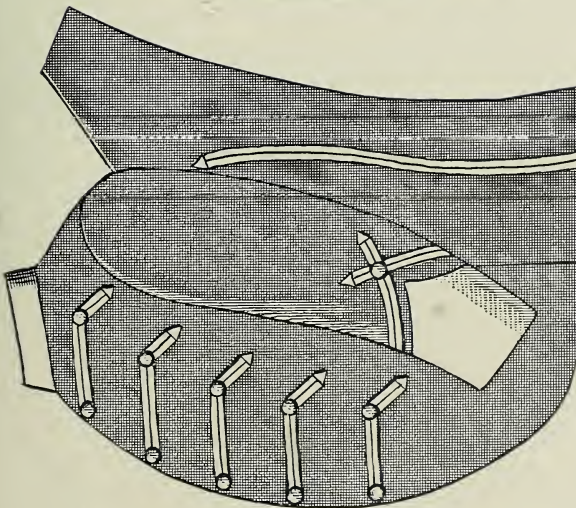
COAT No. 1840.

	Mohair or Gilt.	Gold.
No. 92. Breast ..	\$1 40	\$2 00
No. 93. Sleeve ..	70	1 00



COAT No. 1841.

	Mohair or Gilt.	Gold.
No. 94. Breast ..	\$1 50	\$2 00
No. 95. Sleeve ..	70	1 10
No. 96. Collar ..	20	30



COAT No. 1842.

	Mohair.
No. 97. Breast .....	\$2 25
No. 98. Sleeve .....	1 00
No. 99. Collar .....	15
No. 100. Backseams .	25

## EXAMPLE SELECTION E.

Jacket No. 1852, scarlet cloth Saladin, trimmed with gilt braid.....	\$24 75
Trousers cloth Essex, with two scarlet stripes.....	12 00
Hussar Cap, trimmed with gilt braid .....	3 00
	<hr/>
	\$39 75

## EXAMPLE SELECTION E-1.

Jacket No. 1851, cloth Dallas, white facings and gilt braid .....	\$13 75
Trousers cloth Dallas, with white cloth stripe.....	11 25
Hussar Cap, made of blue cloth, white band and braided ornament in crown .....	3 00
	<hr/>
	\$28 00



E. E-1.  
CAVALRY MESS OR STABLE UNIFORM.

## COAT No. 1850.

**English Mess or Stable Jacket**, to be braided with mohair braid and silk or mohair cord.

Name of Cloth.		Name of Cloth.			
York,	Dark blue.....	\$ 9 50	Essex,	Light blue.....	\$17 50
Ashley,	".....	10 50	Oporto,	".....	18 50
Vermont,	".....	11 20	Drexel,	Gray.....	10 00
Jersey,	".....	12 50	Howell,	".....	12 50
Wabash,	".....	13 60	Newport,	".....	17 50
Dallas,	".....	17 50	Sumter,	".....	17 50
Oakland,	".....	18 20	Chelsea,	Black.....	10 00
Harvard,	".....	21 75	Aurora,	".....	11 60
Ætna,	".....	23 00	Chester,	".....	12 50
Medina,	".....	25 00	Vesta,	".....	13 60
Corea,	Dark green.....	17 50	Traverse,	".....	17 50

## COAT No. 1851.

**English Mess or Stable Jacket**, to be braided around edge with  $\frac{1}{2}$  inch wide mohair braid, and fancy pattern with narrow gilt or mohair soutache braid.

Name of Cloth.		Name of Cloth.			
York,	Dark blue.....	\$ 8 00	Essex,	Light blue.....	\$13 75
Ashley,	".....	8 60	Oporto,	".....	14 75
Vermont,	".....	9 00	Drexel,	Gray.....	8 80
Jersey,	".....	10 75	Howell,	".....	10 75
Wabash,	".....	11 40	Newport,	".....	13 75
Dallas,	".....	13 75	Sumter,	".....	13 75
Oakland,	".....	14 40	Chelsea,	Black.....	8 40
Harvard,	".....	17 90	Aurora,	".....	9 40
Ætna,	".....	19 25	Chester,	".....	10 75
Medina,	".....	21 50	Vesta,	".....	11 40
Corea,	Dark green.....	13 75	Traverse,	".....	13 75

## COAT No. 1852.

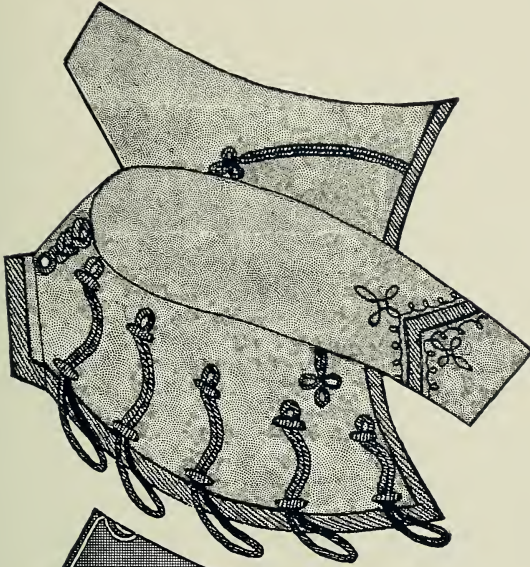
**English Mess or Stable Jacket**, to be braided with  $\frac{1}{2}$  inch wide mohair braid.

Name of Cloth.		Name of Cloth.			
York,	Dark blue.....	\$ 8 25	Essex,	Light blue.....	\$15 75
Ashley,	".....	9 25	Oporto,	".....	16 75
Vermont,	".....	10 00	Drexel,	Gray.....	9 50
Jersey,	".....	11 00	Howell,	".....	11 00
Wabash,	".....	11 75	Newport,	".....	15 75
Dallas,	".....	15 75	Sumter,	".....	15 75
Oakland,	".....	16 25	Chelsea,	Black.....	8 75
Harvard,	".....	23 50	Aurora,	".....	10 50
Ætna,	".....	24 75	Chester,	".....	11 00
Medina,	".....	27 00	Vesta,	".....	11 75
Corea,	Dark green.....	15 75	Traverse,	".....	15 75



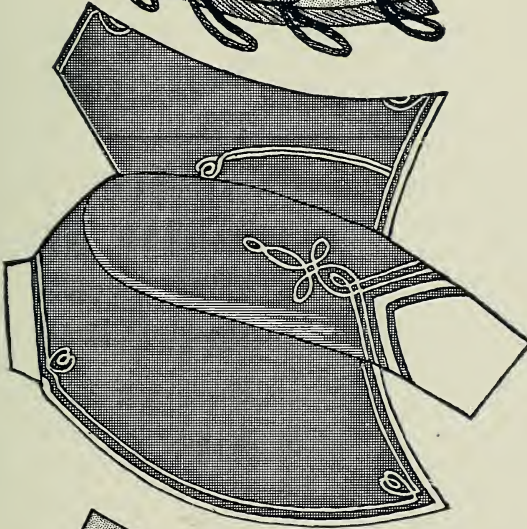
PRICE LIST OF ORNAMENTS.

COAT No. 1850.



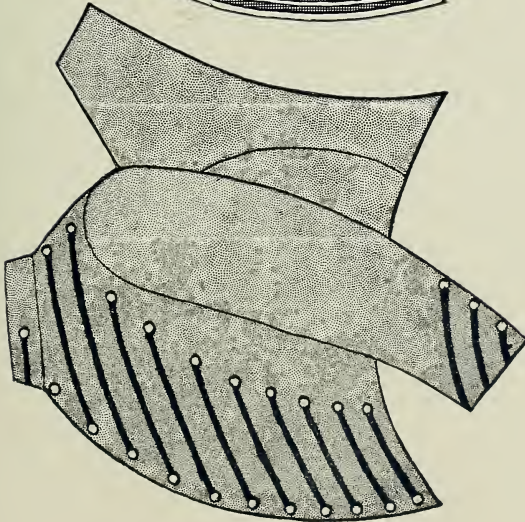
	Mohair or Gilt.	Gold.
No. 120. Breast . . .	\$2 50	\$3 50
No. 121. Sleeve . . .	1 20	1 90
No. 122. Backseams . .	35	70

COAT No. 1851.



	Mohair or Gilt.	Gold.
No. 123. Sleeve . . .	\$1 20	1 90
No. 124. Backseams	25	40

COAT No. 1852.



	Mohair or Gilt.	Gold.
No. 125. Breast . . .	\$2 50	\$3 50
No. 126. Sleeve . . .	45	70
No. 127. Collar . . .	25	40

## EXAMPLE SELECTION F.

Jacket No. 1860, to be made of cloth Dallas, white facings and gold trimmings.....	\$16 00
Vest No. 1968, cloth Coronado .....	6 00
Trousers, cloth Saladin .....	23 50
Sash, of white cloth.....	5 50
Turkish Fez.....	1 70
	<hr/>
	\$52 70

## EXAMPLE SELECTION F-1.

Jacket No. 1859, to be made of cloth Corea, and trimmed with white braid	\$13 40
Vest No. 1968, cloth Syria .....	6 00
Trousers, to be made of cloth Mecca.....	16 00
Sash, of cloth Syria .....	7 85
Turkish Fez.....	1 70
	<hr/>
	\$44 95



F.

ZOUAVE UNIFORMS.

F-1.

## COAT No. 1859.

**Zouave Jacket**, to be braided around edge and on sleeve with 1 inch wide mohair braid ; front loop and back seams of mohair or silk tubular braid. Piping around armholes.

Name of Cloth.		Name of Cloth.	
York,	Dark blue.....	Essex,	Light blue.....
Ashley,	".....	Oporto,	".....
Vermont,	".....	Drexel,	Gray.....
Jersey,	".....	Howell,	".....
Wabash,	".....	Newport,	".....
Dallas,	".....	Sumter,	".....
Oakland,	".....	Chelsea,	Black.....
Harvard,	".....	Aurora,	".....
Ætna,	".....	Chester,	".....
Medina,	".....	Vesta,	".....
Corea,	Dark green.....	Traverse,	".....

## COAT No. 1860.

**Zouave Jacket**, to be braided with narrow gilt or mohair soutache on breast and back and around edge. Sleeves to be braided with 1 inch wide mohair braid ; fancy cloth cuffs and collar.

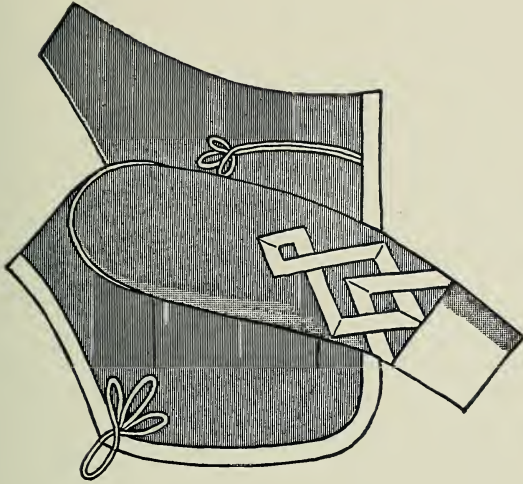
Name of Cloth.		Name of Cloth.	
York,	Dark blue.....	Essex,	Light blue.....
Ashley,	".....	Oporto,	".....
Vermont,	".....	Drexel,	Gray.....
Jersey,	".....	Howell,	".....
Wabash,	".....	Newport,	".....
Dallas,	".....	Sumter,	".....
Oakland,	".....	Chelsea,	Black.....
Harvard,	".....	Aurora,	".....
Ætna,	".....	Chester,	".....
Medina,	".....	Vesta,	".....
Corea,	Dark green.....	Traverse,	".....

## COAT No. 1861.

**Zouave Jacket**, to be braided around edge with ½ inch wide mohair braid and fancy pattern, with narrow gilt or mohair braid.

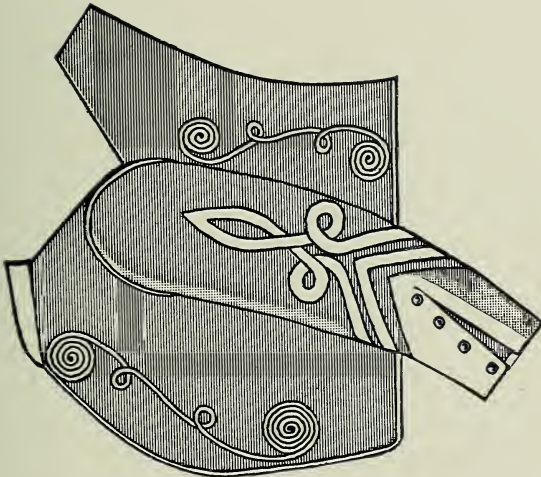
Name of Cloth.		Name of Cloth.	
York,	Dark blue.....	Essex,	Light blue.....
Ashley,	".....	Oporto,	".....
Vermont,	".....	Drexel,	Gray.....
Jersey,	".....	Howell,	".....
Wabash,	".....	Newport,	".....
Dallas,	".....	Sumter,	".....
Oakland,	".....	Chelsea,	Black.....
Harvard,	".....	Aurora,	".....
Ætna,	".....	Chester,	".....
Medina,	".....	Vesta,	".....
Corea,	Dark green.....	Traverse,	".....

PRICE LIST OF ORNAMENTS.



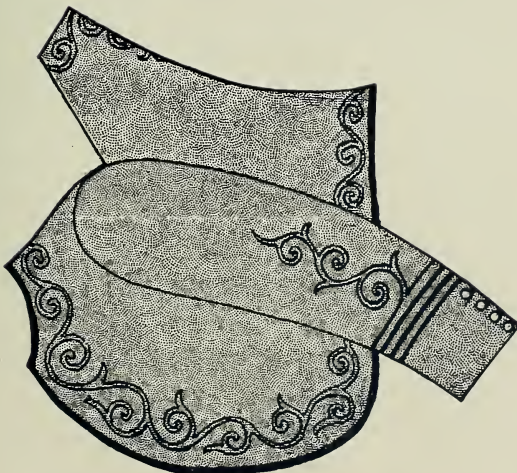
COAT No. 1859.

	Mohair or Gilt.	Gold.
No. 140. Sleeve . . .	\$1 20	\$2 25
No. 141. Backseams.	30	45



COAT No. 1860.

	Mohair or Gilt.	Gold.
No. 142. Breast . . .	\$ 60	\$1 00
No. 143. Sleeve . . .	2 00	3 25
No. 144. Backseams.	60	1 00



COAT No. 1861.

All the ornamentation on this Coat was designed especially for it, and for this reason we do not list them separately.

## EXAMPLE SELECTION G.

Tunic No. 1953, cloth Traverse, trimmed with gilt braid . . . . .	\$28 90
Dolman No. 1873, scarlet cloth, white fur and gold trimmings . . . . .	45 50
Trousers, of black English cords . . . . .	30 00
Shako, black fur, red bag, gold cords . . . . .	22 00
Plume, white heron . . . . .	8 30
Belt, with sabretasche . . . . .	18 00
Baldric . . . . .	10 00
	<hr/>
	\$162 70

## EXAMPLE SELECTION G-1.

Tunic No. 1952, cloth Ashley, trimmed with white cord . . . . .	\$17 90
Dolman No. 1872, cloth Syria, black fur and black trimmings . . . . .	27 00
White knit worsted Tights . . . . .	6 25
Shako . . . . .	10 00
Plume . . . . .	1 85
Belt, without sabretasche . . . . .	7 50
	<hr/>
	\$70 50



G.

HUSSAR UNIFORMS.

G-1.

## COAT No. 1871.

Hussar Dolman or Overthrow, to be trimmed with fur, 1 inch mohair braid and soutache braid.

Name of Cloth.		Name of Cloth.		
York,	Dark blue.....	\$21 00	Essex, Light blue.....	\$39 00
Ashley,	".....	22 50	Oporto, ".....	40 00
Vermont,	".....	23 70	Drexel, Gray.....	22 75
Jersey,	".....	25 20	Howell, ".....	25 20
Wabash,	".....	26 20	Newport, ".....	39 00
Dallas,	".....	39 00	Sumter, ".....	39 00
Oakland,	".....	39 80	Chelsea, Black.....	21 50
Harvard,	".....	46 00	Aurora, ".....	24 20
Ætna,	".....	48 00	Chester, ".....	25 20
Medina,	".....	51 50	Vesta, ".....	26 20
Corea,	Dark green.....	39 00	Traverse, ".....	39 00

## COAT No. 1872.

Hussar Dolman or Overthrow, to be trimmed with fur, 1 inch mohair and soutache braid.

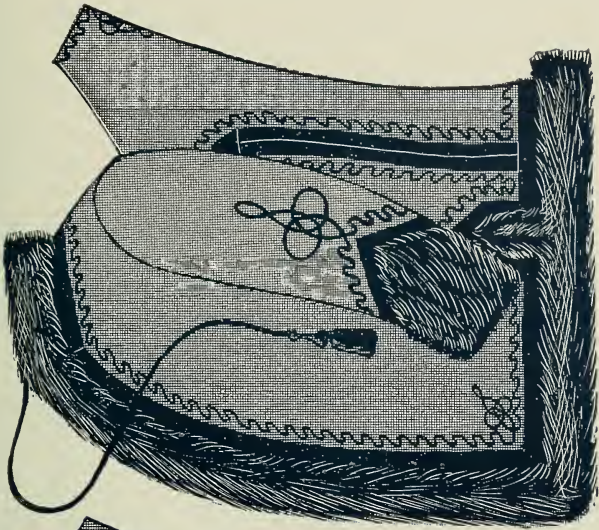
Name of Cloth.		Name of Cloth.		
York,	Dark blue.....	\$22 00	Essex, Light blue.....	\$39 00
Ashley,	".....	23 40	Oporto, ".....	40 00
Vermont,	".....	24 60	Drexel, Gray.....	23 75
Jersey,	".....	26 20	Howell, ".....	26 20
Wabash,	".....	27 00	Newport, ".....	39 00
Dallas,	".....	39 00	Sumter, ".....	39 00
Oakland,	".....	40 00	Chelsea, Black.....	22 50
Harvard,	".....	46 20	Aurora, ".....	25 00
Ætna,	".....	48 00	Chester, ".....	26 20
Medina,	".....	52 00	Vesta, ".....	27 00
Corea,	Dark green.....	39 00	Traverse, ".....	39 00

## COAT No. 1873.

Hussar Dolman or Overthrow, to be trimmed with fur, 1 inch mohair braid and agraffes.

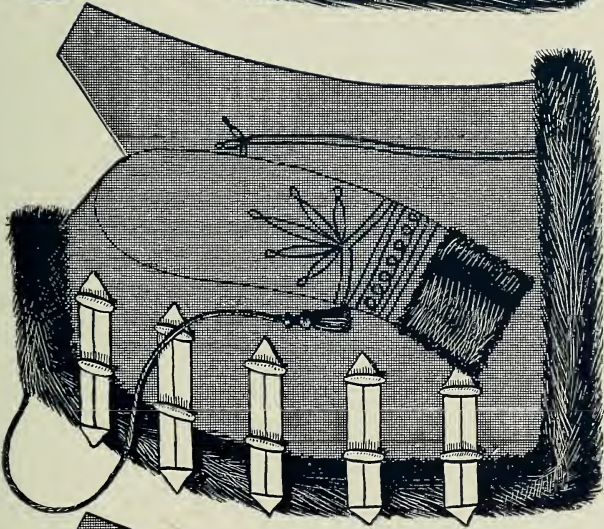
Name of Cloth.		Name of Cloth.		
York,	Dark blue.....	\$20 60	Essex, Light blue.....	\$34 60
Ashley,	".....	22 00	Oporto, ".....	35 60
Vermont,	".....	23 20	Drexel, Gray.....	22 25
Jersey,	".....	24 70	Howell, ".....	24 70
Wabash,	".....	25 60	Newport, ".....	34 60
Dallas,	".....	34 60	Sumter, ".....	34 60
Oakland,	".....	35 60	Chelsea, Black.....	21 00
Harvard,	".....	43 60	Aurora, ".....	23 80
Ætna,	".....	45 50	Chester, ".....	24 70
Medina,	".....	49 00	Vesta, ".....	25 60
Corea,	Dark green.....	34 60	Traverse, ".....	34 60





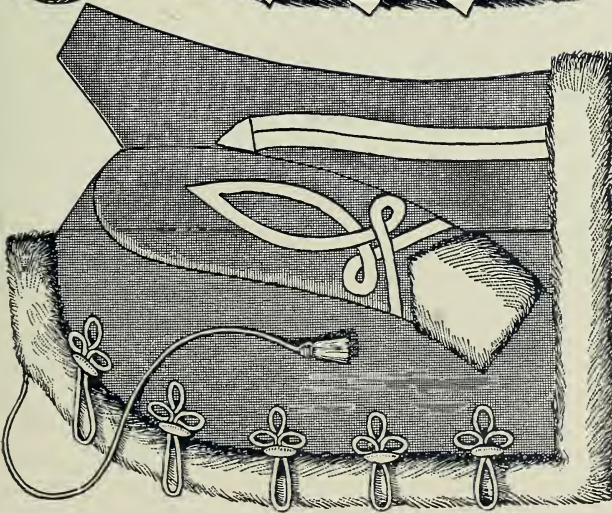
COAT No. 1871.

Hussar Dolman, to be worn as an overthrow with tunics, illustrated on page 43.



COAT No. 1872.

Hussar Dolman, to be worn as an overthrow with tunics, illustrated on page 43.



COAT No. 1873.

Hussar Dolman, to be worn as an overthrow with tunics, illustrated on page 43.

## EXAMPLE SELECTION H.

Coat No. 1887, of cloth Howell, to be trimmed with black mohair braid .	\$19 85
Trousers, of cloth Howell, with black cloth stripe.....	9 75
Shoulder Knots, of black cord.....	1 25
Helmet.....	2 90
Belt.....	1 50
	\$35 25

## EXAMPLE SELECTION H-1.

Coat No. 1882, cloth Ashley, white facings.....	\$14 30
Trousers, of cloth Charlotte, with white cloth stripe.....	7 45
Helmet and Plume.....	5 35
Belt.....	1 50
	\$28 60



H. H-1.  
MILITARY AND BAND UNIFORMS.

## COAT No. 1880.

Coat, for military organizations and bands, to be trimmed with fancy cloth facings and braiding of narrow gilt or mohair soutache braid.

Name of Cloth.		Name of Cloth.	
York,	Dark blue.....	Essex,	Light blue.....
Ashley,	".....	Oporto,	".....
Vermont,	".....	Drexel,	Gray.....
Jersey,	".....	Howell,	".....
Wabash,	".....	Newport,	".....
Dallas,	".....	Sumter,	".....
Oakland,	".....	Chelsea,	Black.....
Harvard,	".....	Aurora,	".....
Ætna,	".....	Chester,	".....
Medina,	".....	Vesta,	".....
Corea,	Dark green.....	Traverse,	".....

## COAT No. 1881.

Coat, for military organizations or bands, to be trimmed with fancy cloth facings, edged with narrow gilt or mohair soutache braid.

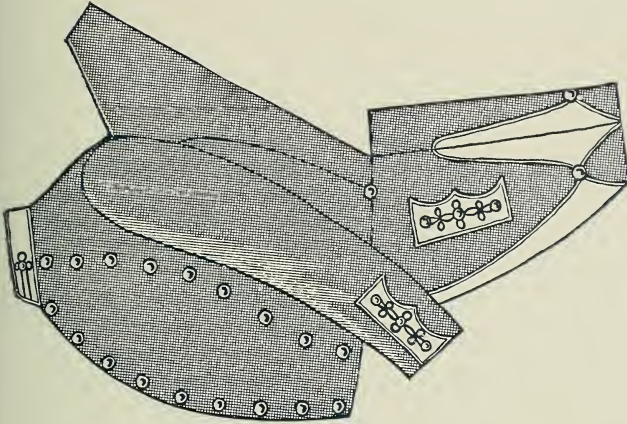
Name of Cloth.		Name of Cloth.	
York,	Dark blue.....	Essex,	Light blue.....
Ashley,	".....	Oporto,	".....
Vermont,	".....	Drexel,	Gray.....
Jersey,	".....	Howell,	".....
Wabash,	".....	Newport,	".....
Dallas,	".....	Sumter,	".....
Oakland,	".....	Chelsea,	Black.....
Harvard,	".....	Aurora,	".....
Ætna,	".....	Chester,	".....
Medina,	".....	Vesta,	".....
Corea,	Dark green.....	Traverse,	".....

## COAT No. 1882.

College Dress Coat, to be trimmed with plain cloth ornaments.

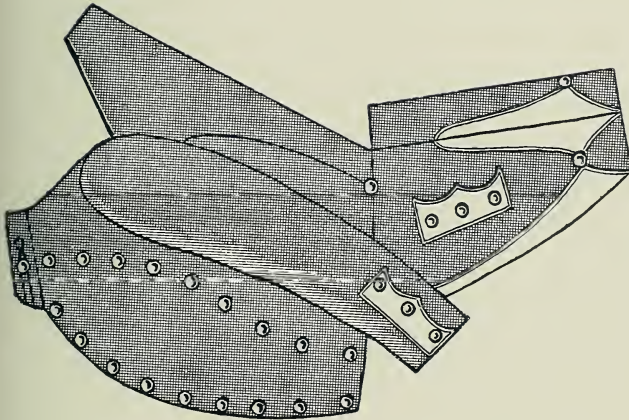
Name of Cloth.		Name of Cloth.	
York,	Dark blue.....	Essex,	Light blue.....
Ashley,	".....	Oporto,	".....
Vermont,	".....	Drexel,	Gray.....
Jersey,	".....	Howell,	".....
Wabash,	".....	Newport,	".....
Dallas,	".....	Sumter,	".....
Oakland,	".....	Chelsea,	Black.....
Harvard,	".....	Aurora,	".....
Ætna,	".....	Chester,	".....
Medina,	".....	Vesta,	".....
Corea,	Dark green.....	Traverse,	".....

PRICE LIST OF ORNAMENTS.



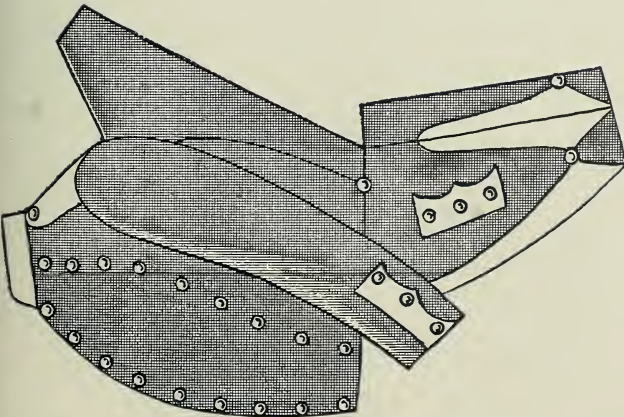
COAT No. 1880.

	Mohair or Gilt.	Gold.
No. 160. Breast..	\$1 80	....
No. 161. Sleeve..	60	\$0 90
No. 162. Collar..	25	40
No. 163. Skirt Or- nament ...	70	1 00
No. 164. Skirt Facings ...	1 75	2 00



COAT No. 1881.

	Mohair or Gilt.	Gold.
No. 165. Breast..	\$1 80	....
No. 166. Sleeve..	45	\$0 60
No. 167. Collar..	25	40
No. 168. Skirt Or- nament ...	60	80
No. 169. Skirt Facings ...	1 75	2 00



COAT No. 1882.

PLAIN CLOTH ORNAMENTS.

No. 170. Breast.....	\$1 80
No. 171. Sleeve.....	40
No. 172. Collar.....	15
No. 173. Shoulder Strap .....	35
No. 174. Skirt Or- nament .....	60
No. 175. Skirt Facings.	1 25

## COAT No. 1883.

Coat, for military organizations or bands, to be trimmed with plain cloth facings and ornaments, braided with narrow gilt or mohair soutache braid.

Name of Cloth.		Name of Cloth.	
York,	Dark blue.....	Essex,	Light blue.....
Ashley,	".....	Oporto,	".....
Vermont,	".....	Drexel,	Gray.....
Jersey,	".....	Howell,	".....
Wabash,	".....	Newport,	".....
Dallas,	".....	Sumter,	".....
Oakland,	".....	Chelsea,	Black.....
Harvard,	".....	Aurora,	".....
Ætna,	".....	Chester,	".....
Medina,	".....	Vesta,	".....
Corea,	Dark green.....	Traverse,	".....

## COAT No. 1884.

Coat, for military organizations, cloth facings, **raised** gold lace ornaments, gold embroidered grenades on skirt.

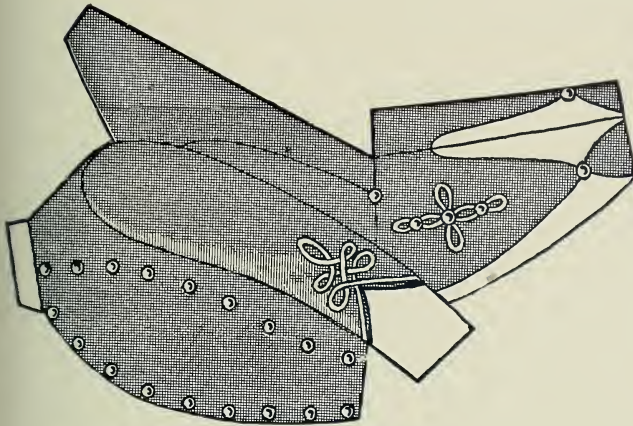
Name of Cloth.		Name of Cloth.	
York,	Dark blue.....	Essex,	Light blue.....
Ashley,	".....	Oporto,	".....
Vermont,	".....	Drexel,	Gray.....
Jersey,	".....	Howell,	".....
Wabash,	".....	Newport,	".....
Dallas,	".....	Sumter,	".....
Oakland,	".....	Chelsea,	Black.....
Harvard,	".....	Aurora,	".....
Ætna,	".....	Chester,	".....
Medina,	".....	Vesta,	".....
Corea,	Dark green.....	Traverse,	".....

## COAT No. 1885.

Coat, for military organizations, cloth facings, flat gold lace ornaments.

Name of Cloth.		Name of Cloth.	
York,	Dark blue.....	Essex,	Light blue.....
Ashley,	".....	Oporto,	".....
Vermont,	".....	Drexel,	Gray.....
Jersey,	".....	Howell,	".....
Wabash,	".....	Newport,	".....
Dallas,	".....	Sumter,	".....
Oakland,	".....	Chelsea,	Black.....
Harvard,	".....	Aurora,	".....
Ætna,	".....	Chester,	".....
Medina,	".....	Vesta,	".....
Corea,	Dark green.....	Traverse,	".....

PRICE LIST OF ORNAMENTS.

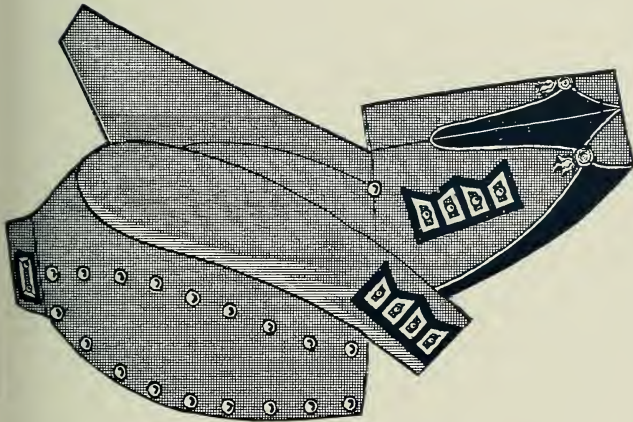


COAT No. 1883.

	Mohair or Gilt.	Gold.
No. 176. Breast..	\$1 80	....
No. 177. Sleeve..	1 00	\$1 30
No. 178. Collar..	15	....
No. 179. Skirt Or- nament ...	70	90
No. 180. Skirt Facings...	1 25	....

COAT No. 1884.

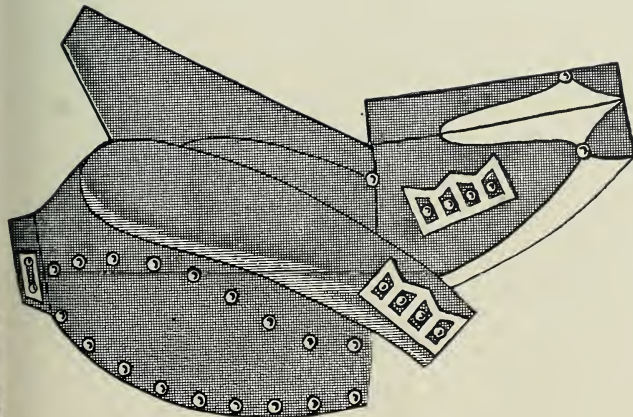
RAISED ORNAMENTS.



	Mohair or Gilt.	Gold.
No. 181. Breast..	\$1 80	....
No. 182. Sleeve..	1 75	\$2 25
No. 183. Collar..	50	75
No. 184. Skirt Or- nament ...	2 00	2 50
No. 185. Skirt Facings ...	1 60	1 85
No. 186. Embr'd Grenades..	2 00	3 00

COAT No. 1885.

FLAT ORNAMENTS.



	Mohair or Gilt.	Gold.
No. 187. Breast..	\$1 80	....
No. 188. Sleeve..	1 00	\$1 40
No. 189. Collar..	35	50
No. 190. Skirt Or- nament ...	1 40	2 00
No. 191. Skirt Facings...	1 75	2 00

## EXAMPLE SELECTION K.

Coat No. 1801 (West Point regulation Blouse), cloth Newport, trimmed with black braid .....	\$17 75
Trousers, of cloth Newport, with black cloth stripe .....	11 25
Cadet Cap .....	3 00
	<hr/>
	\$32 00

## EXAMPLE SELECTION K-1.

Coat No. 1888 (West Point regulation Dress Coat), cloth Newport, trimmed with black braid .....	\$22 00
Trousers, cloth Newport, with black cloth stripe .....	11 25
Shako .....	6 25
Plume, for cadet officer .....	10 00
Sash, crimson silk .....	25 00
Shoulder Belt .....	75
Sword .....	15 00
	<hr/>
	\$90 25





Ames  
Sword  
Co.  
Chicago

K. CADET PRIVATE.

K-1. CADET CAPTAIN.

WEST POINT REGULATIONS.

## COAT No. 1886.

Coat, for bands or military organizations, to be braided with narrow gilt or mohair soutache braid.

Name of Cloth.		Name of Cloth.	
York,	Dark blue.....	Essex,	Light blue.....
Ashley,	".....	Oporto,	".....
Vermont,	".....	Drexel,	Gray.....
Jersey,	".....	Howell,	".....
Wabash,	".....	Newport,	".....
Dallas,	".....	Sunter,	".....
Oakland,	".....	Chelsea,	Black.....
Harvard,	".....	Aurora,	".....
Ætna,	".....	Chester,	".....
Medina,	".....	Vesta,	".....
Corea,	Dark green.....	Traverse,	".....

## COAT No. 1887.

Coat, for bands or military organizations, to be braided with narrow gilt or mohair soutache braid.

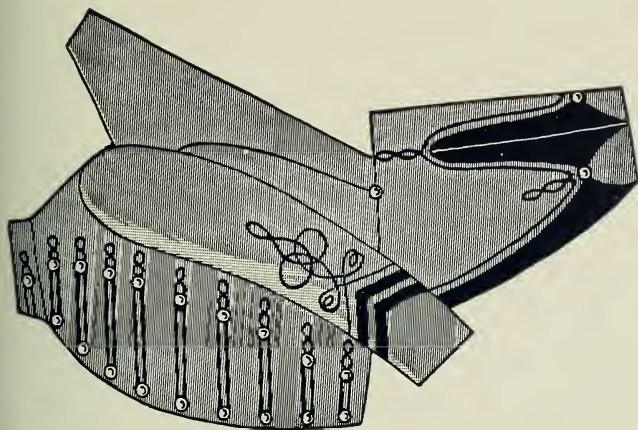
Name of Cloth.		Name of Cloth.	
York,	Dark blue.....	Essex,	Light blue.....
Ashley,	".....	Oporto,	".....
Vermont,	".....	Drexel,	Gray.....
Jersey,	".....	Howell,	".....
Wabash,	".....	Newport,	".....
Dallas,	".....	Sunter,	".....
Oakland,	".....	Chelsea,	Black.....
Harvard,	".....	Aurora,	".....
Ætna,	".....	Chester,	".....
Medina,	".....	Vesta,	".....
Corea,	Dark green.....	Traverse,	".....

## COAT No. 1888.

U. S. Military Academy Regulation Dress Coat, to be braided with narrow mohair soutache braid.

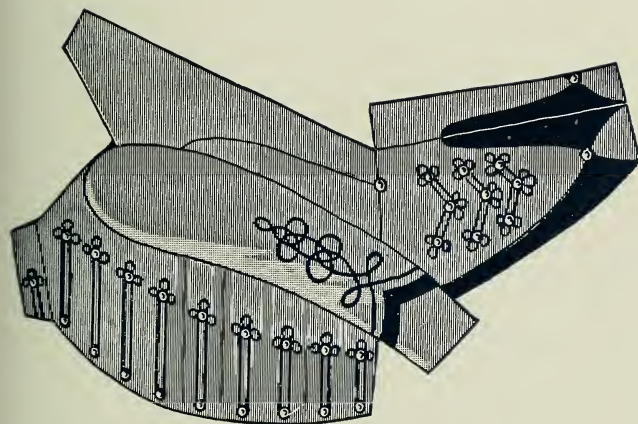
Name of Cloth.		Name of Cloth.	
York,	Dark blue.....	Essex,	Light blue.....
Ashley,	".....	Oporto,	".....
Vermont,	".....	Drexel,	Gray.....
Jersey,	".....	Howell,	".....
Wabash,	".....	Newport,	".....
Dallas,	".....	Sunter,	".....
Oakland,	".....	Chelsea,	Black.....
Harvard,	".....	Aurora,	".....
Ætna,	".....	Chester,	".....
Medina,	".....	Vesta,	".....
Corea,	Dark green.....	Traverse,	".....

PRICE LIST OF ORNAMENTS.



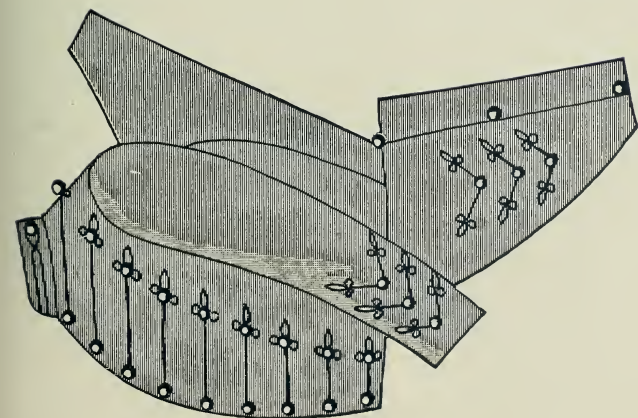
COAT No. 1886.

	Mohair or Gilt.	Gold.
No. 192. Breast..	\$2 50	\$3 00
No. 193. Sleeve..	75	1 00
No. 194. Collar..	25	40
No. 195. Skirt Or- nament ...	25	40
No. 196. Skirt Facings ...	1 50	2 00



COAT No. 1887.

	Mohair or Gilt.	Gold.
No. 197. Breast..	\$2 50	\$3 00
No. 198. Sleeve..	75	1 00
No. 199. Collar..	25	40
No. 200. Skirt Or- nament ...	1 25	1 50
No. 201. Skirt Facings ...	1 50	2 00



COAT No. 1888.

	Mohair or Gilt.	Gold.
No. 202. Breast..	\$2 75	\$3 25
No. 203. Sleeve..	1 00	1 25
No. 204. Collar..	35	45
No. 205. Skirt Or- nament ...	1 00	1 25

## EXAMPLE SELECTION L.

Coat No. 1889, cloth Corea, with gilt trimmings .....	\$23 30
Trousers, of white linen duck .....	9 00
Shoulder Knots, gilt cord .....	4 75
Helmet .....	3 45
Plume, white Yak hair .....	3 75
Belt .....	1 50
	<hr/>
	\$45 75

## EXAMPLE SELECTION L-1.

Coat No. 1891, cloth Chester, to be trimmed with gilt braid and white facings .....	\$20 50
Trousers, cloth Chester, with white cloth stripe .....	9 75
Épaulettes .....	5 00
Helmet .....	3 45
Plume .....	5 00
Belt .....	1 20
	<hr/>
	\$44 90



L. L-1.  
MILITARY AND BAND UNIFORMS.

## COAT No. 1889.

Coat, for bands or military organizations, to be braided with narrow gilt or mohair soutache braid.

Name of Cloth.		Name of Cloth.	
York,	Dark blue.....	Essex,	Light blue.....
Ashley,	".....	Oporto,	".....
Vermont,	".....	Drexel,	Gray.....
Jersey,	".....	Howell,	".....
Wabash,	".....	Newport,	".....
Dallas,	".....	Sumter,	".....
Oakland,	".....	Chelsea,	Black.....
Harvard,	".....	Aurora,	".....
Ætna,	".....	Chester,	".....
Medina,	".....	Vesta,	".....
Corea,	Dark green.....	Traverse,	".....

## COAT No. 1890.

Coat, for military organizations, to be braided with narrow gilt or mohair soutache braid, gold embroidered collar.

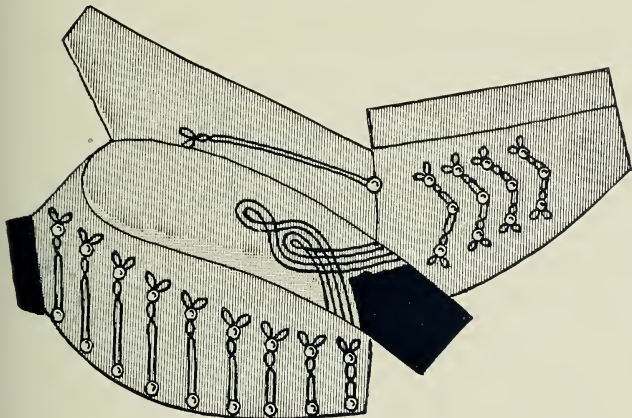
Name of Cloth.		Name of Cloth.	
York,	Dark blue.....	Essex,	Light blue.....
Ashley,	".....	Oporto,	".....
Vermont,	".....	Drexel,	Gray.....
Jersey,	".....	Howell,	".....
Wabash,	".....	Newport,	".....
Dallas,	".....	Sumter,	".....
Oakland,	".....	Chelsea,	Black.....
Harvard,	".....	Aurora,	".....
Ætna,	".....	Chester,	".....
Medina,	".....	Vesta,	".....
Corea,	Dark green.....	Traverse,	".....

## COAT No. 1891.

Coat, for bands or military organizations, to be trimmed with ½ inch wide mohair braid, edged with narrow gilt or mohair soutache braid.

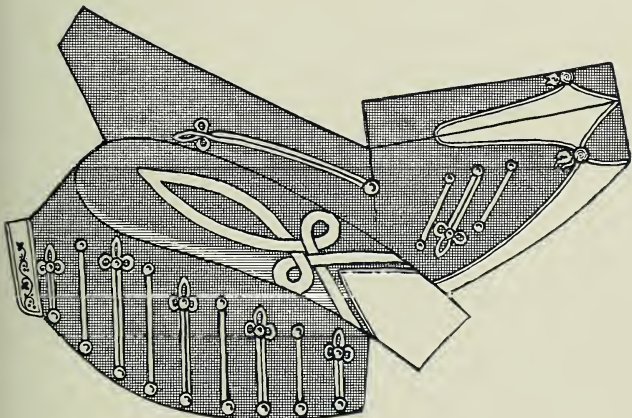
Name of Cloth.		Name of Cloth.	
York,	Dark blue.....	Essex,	Light blue.....
Ashley,	".....	Oporto,	".....
Vermont,	".....	Drexel,	Gray.....
Jersey,	".....	Howell,	".....
Wabash,	".....	Newport,	".....
Dallas,	".....	Sumter,	".....
Oakland,	".....	Chelsea,	Black.....
Harvard,	".....	Aurora,	".....
Ætna,	".....	Chester,	".....
Medina,	".....	Vesta,	".....
Corea,	Dark green.....	Traverse,	".....

PRICE LIST OF ORNAMENTS.



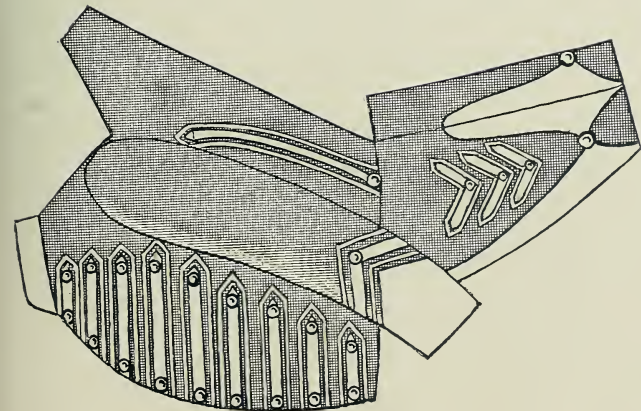
COAT No. 1889.

	Gilt.	Gold.
No. 206. Breast..	\$2 50	\$3 00
No. 207. Sleeve..	1 45	1 75
No. 208. Collar..	15	....
No. 209. Back-seams.....	25	50
No. 210. Skirt Ornament ...	1 40	1 80



COAT No. 1890.

	Gilt.	Gold.
No. 211. Breast..	\$2 40	\$2 90
No. 212. Sleeve..	1 25	1 75
No. 213. Collar..	1 75	2 50
No. 214. Back-seams.....	25	50
No. 215. Skirt Ornament ...	60	80
No. 216. Skirt Facings ...	1 60	1 85
No. 217. Grenades	2 00	3 00



COAT No. 1891.

	Gilt.	Gold.
No. 218. Breast..	\$2 75	\$3 50
No. 219. Sleeve..	90	1 25
No. 220. Collar..	15	....
No. 221. Back-seams.....	50	1 00
No. 222. Skirt Ornament ...	75	1 00
No. 223. Skirt Facings ...	1 75	2 00

## EXAMPLE SELECTION M.

Coat No. 1890, cloth Traverse, gilt trimmings and white facings .....	\$27 30
Trousers of cloth Sheridan, with white cloth stripe .....	15 75
Shoulder Knots.....	4 75
Shako .....	15 65
Set Cross Belts and Waist Belt with plates .....	2 00
	<hr/>
	\$65 45

## EXAMPLE SELECTION M-1.

Coat No. 1893, cloth Essex, black cord trimming .....	\$20 60
Trousers, cloth Essex, with black cloth stripe.....	11 25
Shoulder Knots.....	3 75
Shako .....	10 00
Plume.....	1 90
Belt .....	2 00
	<hr/>
	\$49 50





M.

M-1.

MILITARY AND BAND UNIFORMS.

## COAT No. 1892.

Coat, for bands, to be braided with 1 inch mohair braid and gilt or mohair soutache braid, five silk cord agraffes on breast.

Name of Cloth.		Name of Cloth.	
York,	Dark blue.....	Essex,	Light blue.....
Ashley,	".....	Oporto,	".....
Vermont,	".....	Drexel,	Gray.....
Jersey,	".....	Howell,	".....
Wabash,	".....	Newport,	".....
Dallas,	".....	Sumter,	".....
Oakland,	".....	Chelsea,	Black.....
Harvard,	".....	Aurora,	".....
Ætna,	".....	Chester,	".....
Medina,	".....	Vesta,	".....
Corea,	Dark green.....	Traverse,	".....

## COAT No. 1893.

Coat, for military organizations or bands, to be braided with silk or mohair tubular braid.

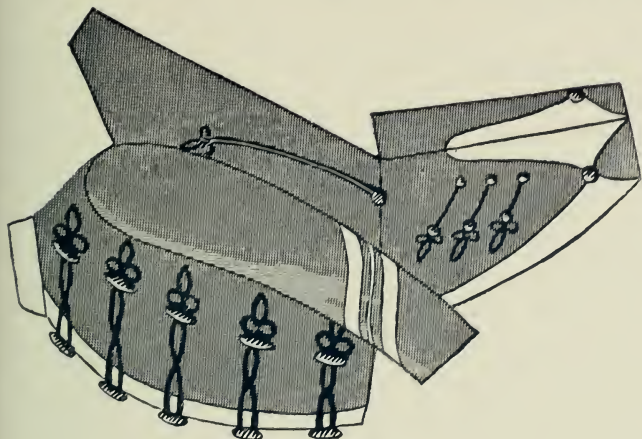
Name of Cloth.		Name of Cloth.	
York,	Dark blue.....	Essex,	Light blue.....
Ashley,	".....	Oporto,	".....
Vermont,	".....	Drexel,	Gray.....
Jersey,	".....	Howell,	".....
Wabash,	".....	Newport,	".....
Dallas,	".....	Sumter,	".....
Oakland,	".....	Chelsea,	Black.....
Harvard,	".....	Aurora,	".....
Ætna,	".....	Chester,	".....
Medina,	".....	Vesta,	".....
Corea,	Dark green.....	Traverse,	".....

## COAT No. 1894.

Coat, for military organizations and bands, to be braided with narrow gilt or mohair braid, five agraffes of gilt, mohair or silk cord on breast.

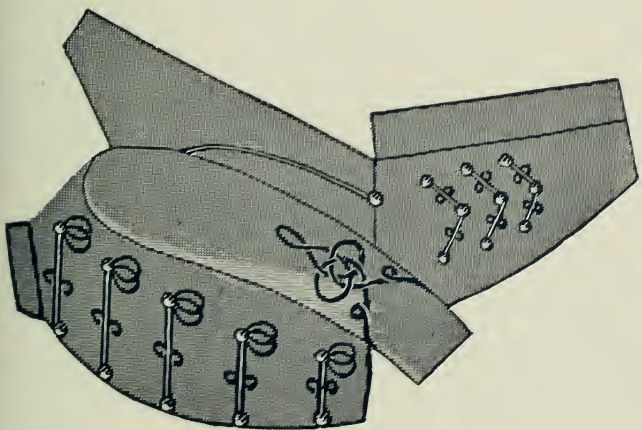
Name of Cloth.		Name of Cloth.	
York,	Dark blue.....	Essex,	Light blue.....
Ashley,	".....	Oporto,	".....
Vermont,	".....	Drexel,	Gray.....
Jersey,	".....	Howell,	".....
Wabash,	".....	Newport,	".....
Dallas,	".....	Sumter,	".....
Oakland,	".....	Chelsea,	Black.....
Harvard,	".....	Aurora,	".....
Ætna,	".....	Chester,	".....
Medina,	".....	Vesta,	".....
Corea,	Dark green.....	Traverse,	".....

PRICE LIST OF ORNAMENTS.



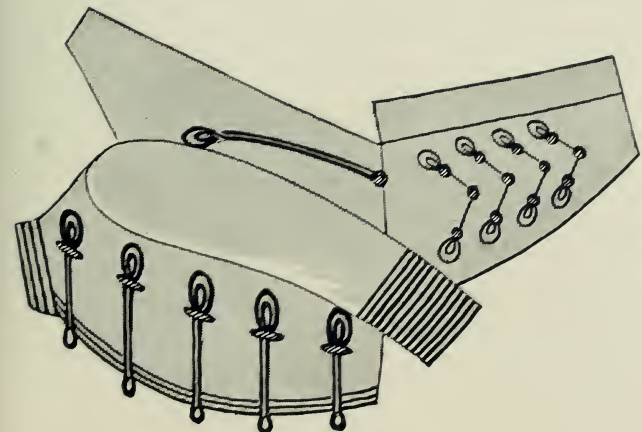
COAT No. 1892.

	Mohair or Gilt.	Gold.
No. 224. Breast . . .	\$1 75	\$2 75
No. 225. Sleeve . . .	45	75
No. 226. Collar . . .	15	...
No. 227. Back- seams . . . . .	25	50
No. 228. Skirt Ornaments.	75	1 50
No. 229. Skirt Facings . . .	1 75	2 00



COAT No. 1893.

	Mohair or Gilt.	Gold.
No. 230. Breast . . .	\$2 00	\$3 00
No. 231. Sleeve . . .	75	1 25
No. 232. Collar . . .	35	45
No. 233. Skirt . . .	1 20	1 50



COAT No. 1894.

	Mohair or Gilt.	Gold.
No. 235. Breast . . .	\$1 75	\$2 75
No. 236. Sleeve . . .	1 00	1 75
No. 237. Collar . . .	30	50
No. 238. Skirt . . .	1 25	1 75
No. 239. Back- seams . . . . .	25	50

## EXAMPLE SELECTION N.

Coat No. 1894, cloth Sumter, black braided ornaments .....	\$25 25
Trousers, cloth Traverse, with gilt stripe .....	11 50
Epaulettes .....	4 00
Shako .....	6 00
Pompon .....	60
Belt .....	1 50
	<hr/>
	\$48 85

## EXAMPLE SELECTION O.

Coat No. 1892, cloth Jersey, white braiding and black agraffes .....	\$20 40
Trousers, of cloth Jersey, with white cloth stripe .....	9 75
Helmet, with black cord plaits .....	4 75
Shoulder Knots .....	1 85
Belt .....	1 50
	<hr/>
	\$38 25



N. O.  
MILITARY AND BAND UNIFORMS.

## COAT No. 1895.

Zouave Officer's Dress Coat, trimmed with elaborate cloth facings, edged with narrow gilt or mohair soutache braid.

Name of Cloth.		Name of Cloth.					
York,	Dark blue.....	\$18	60	Essex,	Light blue.....	\$20	40
Ashley,	".....	19	80	Oporto,	".....	27	00
Vermont,	".....	20	75	Drexel,	Gray.....	20	00
Jersey,	".....	21	75	Howell,	".....	21	75
Wabash,	".....	22	75	Newport,	".....	26	40
Dallas,	".....	26	40	Sumter,	".....	26	40
Oakland,	".....	27	20	Chester,	Black.....	21	75
Harvard,	".....	30	70	Vesta,	".....	22	75
Ætna,	".....	32	25	Traverse,	".....	26	40
Medina,	".....	35	00	Tangier,	White.....	22	75
Corea,	Dark green.....	26	40	Saladin,	Scarlet.....	22	75

## COAT No. 1896.

Zouave Officer's Dress Coat, to be braided with narrow gilt or mohair soutache braid.

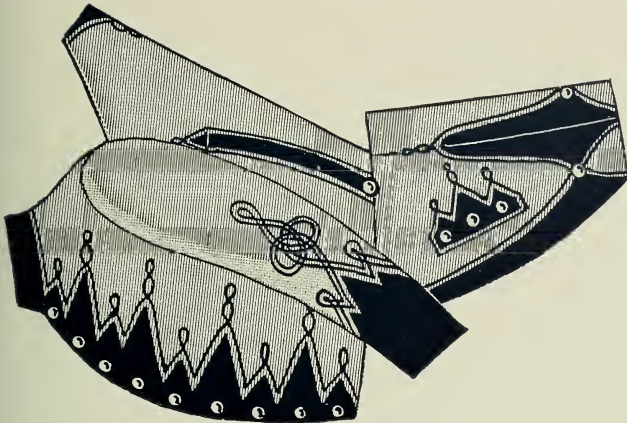
Name of Cloth.		Name of Cloth.					
York,	Dark blue.....	\$17	60	Essex,	Light blue.....	\$25	20
Ashley,	".....	18	80	Oporto,	".....	26	00
Vermont,	".....	19	75	Drexel,	Gray.....	19	00
Jersey,	".....	20	75	Howell,	".....	20	75
Wabash,	".....	21	75	Newport,	".....	25	20
Dallas,	".....	25	20	Sumter,	".....	25	20
Oakland,	".....	26	00	Chester,	Black.....	20	75
Harvard,	".....	29	50	Vesta,	".....	21	75
Ætna,	".....	30	00	Traverse,	".....	25	20
Medina,	".....	33	30	Tangier,	White.....	21	75
Corea,	Dark green.....	25	20	Saladin,	Scarlet.....	21	75

## COAT No. 1897.

Zouave Officer's Dress Coat, to be braided with narrow gilt or mohair soutache braid.

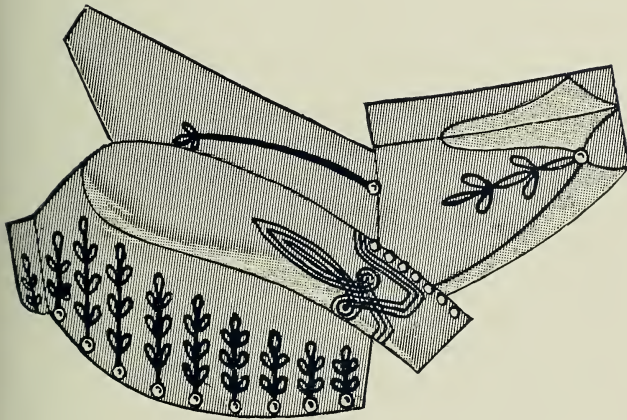
Name of Cloth.		Name of Cloth.					
York,	Dark blue.....	\$16	00	Essex,	Light blue.....	\$23	20
Ashley,	".....	17	00	Oporto,	".....	24	00
Vermont,	".....	18	00	Drexel,	Gray.....	16	20
Jersey,	".....	19	00	Howell,	".....	19	00
Wabash,	".....	20	00	Newport,	".....	23	20
Dallas,	".....	23	20	Sumter,	".....	23	20
Oakland,	".....	24	00	Chester,	Black.....	19	00
Harvard,	".....	27	50	Vesta,	".....	20	00
Ætna,	".....	29	00	Traverse,	".....	23	20
Medina,	".....	32	00	Tangier,	White.....	20	00
Corea,	Dark green.....	23	20	Saladin,	Scarlet.....	20	00

PRICE LIST OF ORNAMENTS.



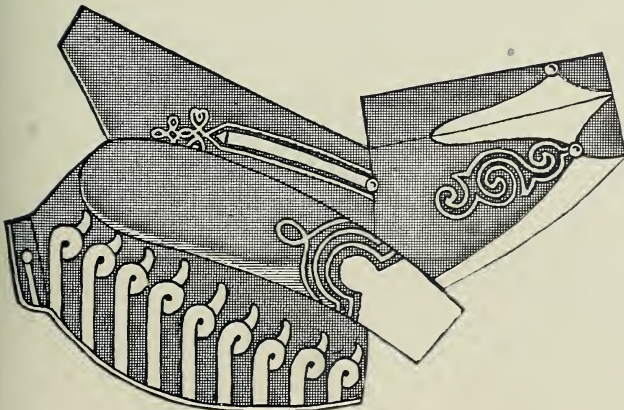
COAT No. 1895.

	Mohair or Gilt.	Gold.
No. 240. Breast ..	\$3 70	\$4 80
No. 241. Sleeve ..	1 55	2 00
No. 242. Collar ..	15	....
No. 243. Skirt Ornament .	95	1 15
No. 244. Skirt Facings...	95	1 15
No. 245. Back- seams.....	55	75
No. 246. Back of Neck.....	20	30



COAT No. 1896.

	Mohair or Gilt.	Gold.
No. 247. Breast ..	\$2 10	\$3 10
No. 248. Sleeve ..	1 75	2 40
No. 249. Collar ..	20	30
No. 250. Skirt Ornament .	30	45
No. 251. Skirt Facings...	2 00	2 25
No. 252. Back- seams.....	30	50



COAT No. 1897.

	Mohair or Gilt.	Gold.
No. 253. Breast ..	\$2 00	\$3 00
No. 254. Sleeve ..	1 10	1 40
No. 255. Collar ..	30	40
No. 256. Skirt Ornament .	35	55
No. 257. Skirt Facings...	2 00	....
No. 258. Back- seams.....	75	1 10

## EXAMPLE SELECTION P.

Coat No. 1932, cloth Oporto, black facings and gilt braiding . . . . .	\$23 75
Trousers, of cloth Oporto, with black cloth stripe and gilt braid edging..	14 25
Helmet . . . . .	5 00
Plume, scarlet yak hair . . . . .	3 75
Belt . . . . .	4 35
Sabre . . . . .	10 00
	<hr/>
	\$61 10

## EXAMPLE SELECTION Q.

Coat No. 1897, cloth Corea, white braiding and facings . . . . .	\$23 20
Trousers, of cloth Saladin, with gilt stripe . . . . .	16 00
Shoulder Knots for Captain . . . . .	6 75
Cap . . . . .	4 00
Dress Belt . . . . .	8 75
	<hr/>
	\$58 70





P.  
ARTILLERY PRIVATE.

Q.  
ZOUAVE OFFICER.

## COAT No. 1898.

Coat, for bands or military organizations, to be braided with two rows narrow gilt or mohair soutache braid.

Name of Cloth.		Name of Cloth.	
York,	Dark blue.....	Essex,	Light blue.....
Ashley,	".....	Oporto,	".....
Vermont,	".....	Drexel,	Gray.....
Jersey,	".....	Howell,	".....
Wabash,	".....	Newport,	".....
Dallas,	".....	Sumter,	".....
Oakland,	".....	Chelsea,	Black.....
Harvard,	".....	Aurora,	".....
Ætna,	".....	Chester,	".....
Medina,	".....	Vesta,	".....
Corea,	Dark green.....	Traverse,	".....

## COAT No. 1899.

Coat, for bands and military organizations, to be braided with narrow gilt or mohair soutache braid.

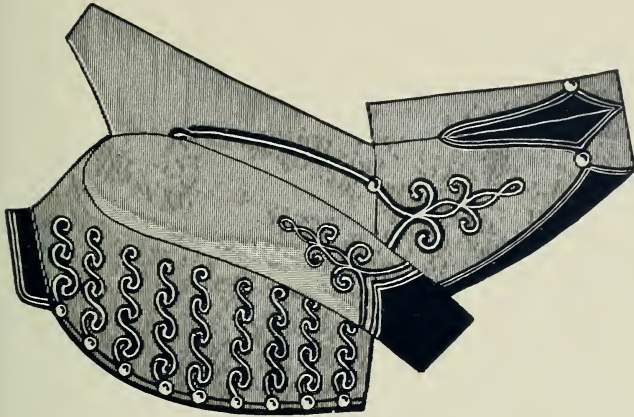
Name of Cloth.		Name of Cloth.	
York,	Dark blue.....	Essex,	Light blue.....
Ashley,	".....	Oporto,	".....
Vermont,	".....	Drexel,	Gray.....
Jersey,	".....	Howell,	".....
Wabash,	".....	Newport,	".....
Dallas,	".....	Sumter,	".....
Oakland,	".....	Chelsea,	Black.....
Harvard,	".....	Aurora,	".....
Ætna,	".....	Chester,	".....
Medina,	".....	Vesta,	".....
Corea,	Dark green.....	Traverse,	".....

## COAT No. 1900.

Coat, for bands and military organizations, to be braided with  $\frac{3}{8}$  inch wide silk or mohair braid, edged with narrow gilt braid on each side.

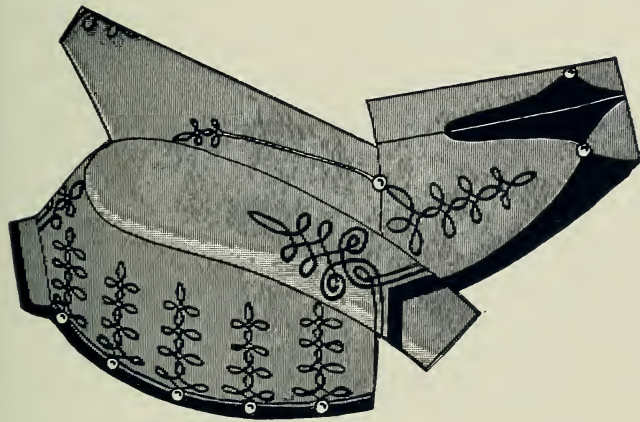
Name of Cloth.		Name of Cloth.	
York,	Dark blue.....	Essex,	Light blue.....
Ashley,	".....	Oporto,	".....
Vermont,	".....	Drexel,	Gray.....
Jersey,	".....	Howell,	".....
Wabash,	".....	Newport,	".....
Dallas,	".....	Sumter,	".....
Oakland,	".....	Tangier,	White.....
Harvard,	".....	Saladin,	Scarlet.....
Ætna,	".....	Mecca,	Light green.....
Medina,	".....	Vesta,	Black.....
Corea,	Dark green.....	Traverse,	".....

PRICE LIST OF ORNAMENTS.



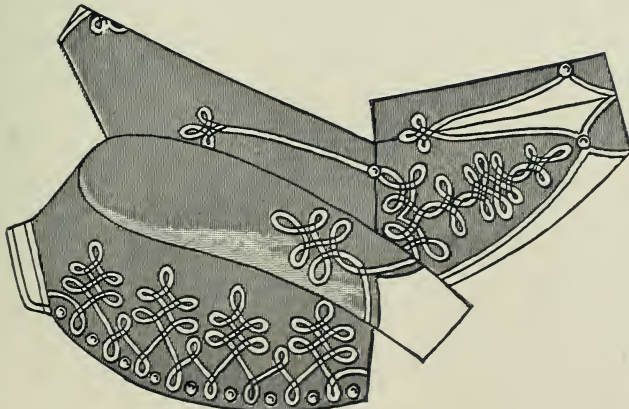
COAT No. 1898.

	Gilt.	Gold.
No. 260. Breast..	\$2 00	\$2 80
No. 261. Sleeve..	1 50	1 75
No. 262. Collar..	15	25
No. 263. Back-seams . . . .	30	50
No. 264. Skirt Ornament .	1 00	1 60
No. 265. Skirt Facings...	2 25	2 60



COAT No. 1899.

	Gilt.	Gold.
No. 266. Breast..	\$1 75	\$2 50
No. 267. Sleeve..	1 00	1 40
No. 268. Collar..	15	...
No. 269. Shoulder Ornament .	30	50
No. 270. Back-seams . . . .	30	50
No. 271. Back of Neck . . . . .	15	20
No. 272. Skirt Ornament .	50	75
No. 273. Skirt Facings...	1 85	...



COAT No. 1900.

	Gilt.	Gold.
No. 274. Breast..	\$4 20	\$5 50
No. 275. Sleeve..	2 70	3 70
No. 276. Collar..	60	75
No. 277. Back-seams . . . .	50	70
No. 278. Back of Neck . . . . .	20	30
No. 279. Skirt Facings...	3 10	3 50
No. 280. Skirt Ornament .	2 30	3 15

## COAT No. 1901.

Coat, for Drum Major, to be trimmed with narrow gilt or mohair soutache braid and fancy cloth facings.

Name of Cloth.		Name of Cloth.	
York,	Dark blue.....	Essex,	Light blue.....
Ashley,	".....	Oporto,	".....
Vermont,	".....	Drexel,	Gray.....
Jersey,	".....	Howell,	".....
Wabash,	".....	Newport,	".....
Dallas,	".....	Sumter,	".....
Oakland,	".....	Tangier,	White.....
Harvard,	".....	Saladin,	Scarlet.....
Ætna,	".....	Mecca,	Light green.....
Medina,	".....	Vesta,	Black.....
Corea,	Dark green.....	Traverse,	".....
	\$20 20		\$27 40
	21 40		28 00
	22 30		21 60
	23 30		23 30
	24 00		27 40
	27 40		27 40
	29 20		26 40
	31 70		26 40
	33 30		26 40
	36 00		24 00
	27 40		27 40

## COAT No. 1902.

Coat, for Drum Major, to be trimmed with narrow gilt or mohair soutache braid and fancy cloth facings.

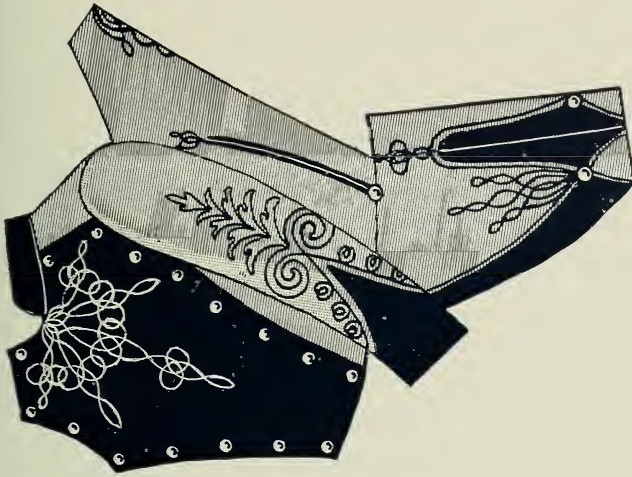
Name of Cloth.		Name of Cloth.	
York,	Dark blue.....	Essex,	Light blue.....
Ashley,	".....	Oporto,	".....
Vermont,	".....	Drexel,	Gray.....
Jersey,	".....	Howell,	".....
Wabash,	".....	Newport,	".....
Dallas,	".....	Sumter,	".....
Oakland,	".....	Tangier,	White.....
Harvard,	".....	Saladin,	Scarlet.....
Ætna,	".....	Mecca,	Light green.....
Medina,	".....	Vesta,	Black.....
Corea,	Dark green.....	Traverse,	".....
	\$19 30		\$26 25
	20 50		27 00
	21 50		20 70
	22 50		22 50
	23 25		26 25
	26 25		26 25
	27 00		26 25
	30 50		25 25
	32 00		25 25
	35 00		23 25
	26 25		26 25

## COAT No. 1903.

Coat, for Drum Major, to be trimmed with narrow gilt or mohair soutache braid and fancy cloth facings.

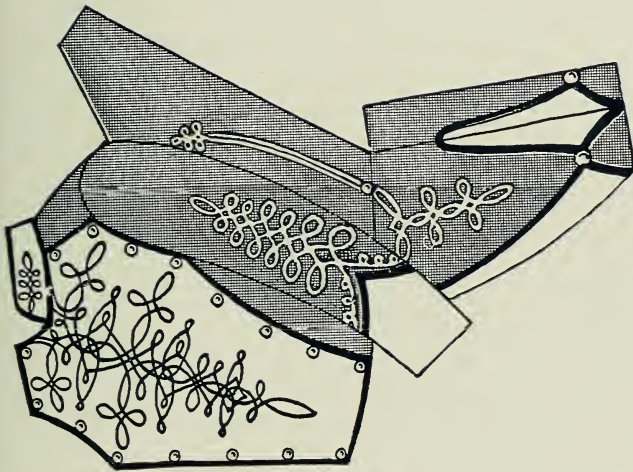
Name of Cloth.		Name of Cloth.	
York,	Dark blue.....	Essex,	Light blue.....
Ashley,	".....	Oporto,	".....
Vermont,	".....	Drexel,	Gray.....
Jersey,	".....	Howell,	".....
Wabash,	".....	Newport,	".....
Dallas,	".....	Sumter,	".....
Oakland,	".....	Tangier,	White.....
Harvard,	".....	Saladin,	Scarlet.....
Ætna,	".....	Mecca,	Light green.....
Medina,	".....	Vesta,	Black.....
Corea,	Dark green.....	Traverse,	".....
	\$21 50		\$31 25
	22 65		32 00
	23 60		22 80
	24 60		24 60
	25 40		31 25
	31 25		31 25
	32 25		30 25
	35 60		30 25
	37 20		30 25
	40 00		25 40
	31 25		31 25

PRICE LIST OF ORNAMENTS.



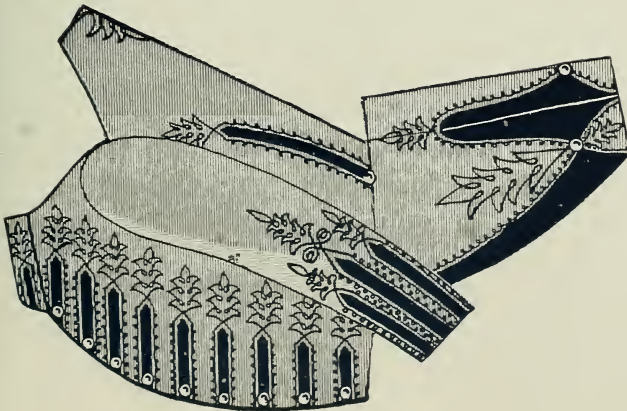
COAT No. 1901.

	Mohair or Gilt.	Gold.
No. 282. Plastron.	\$4 40	\$4 75
No. 283. Sleeve ..	1 80	2 40
No. 284. Collar ..	15	...
No. 285. Back- seams .....	30	50
No. 286. Back of Neck .....	30	50
No. 287. Skirt Ornament .	35	60
No. 288. Skirt Facings ...	2 20	2 50



COAT No. 1902.

	Mohair or Gilt.	Gold.
No. 289. Plastron.	\$5 00	\$5 50
No. 290. Sleeve ..	1 50	2 00
No. 291. Collar ..	50	60
No. 292. Back- seams .....	30	50
No. 293. Skirt Ornament .	35	55
No. 294. Skirt Facings ...	2 30	...



COAT No. 1903.

	Mohair or Gilt.	Gold.
No. 295. Breast ..	\$4 75	\$7 25
No. 296. Sleeve ..	1 65	2 40
No. 297. Collar ..	50	70
No. 298. Back- seams .....	40	50
No. 299. Back of Neck .....	20	30
No. 300. Skirt Ornament .	70	1 00
No. 301. Skirt Facings ...	2 85	3 25

## EXAMPLE SELECTION R.

U. S. Regulation Dress Uniform for enlisted men of infantry.

Coat No. 1923, cloth Ashley, white cloth facing . . . . .	\$12 90
Trousers of cloth Charlotte . . . . .	6 70
Helmet . . . . .	3 00
	<hr/>
	\$22 60

## EXAMPLE SELECTION S.

U. S. Regulation Dress Uniform for enlisted men of cavalry or light artillery.

Coat No. 1922, cloth Jersey, yellow or scarlet cloth facings . . . . .	\$14 20
Trousers of cloth Athens, cloth stripe . . . . .	9 15
Helmet . . . . .	4 00
Plume . . . . .	1 90
Gauntlets . . . . .	2 50
	<hr/>
	\$31 75



R.  
INFANTRY PRIVATE.

S.  
CAVALRY OR ARTILLERY SERGEANT  
U. S. REGULATIONS.

## GOAT No. 1921.

Coat, for military organizations or bands, to be trimmed with cloth facings, edged with narrow piping of cloth.

Name of Cloth.		Name of Cloth.	
York.	Dark blue.....	Essex.	Light blue.....
Ashley.	".....	Oporto.	".....
Vermont.	".....	Drexel.	Gray.....
Jersey.	".....	Howell.	".....
Wabash.	".....	Newport.	".....
Dallas.	".....	Sumter.	".....
Oakland.	".....	Chelsea.	Black.....
Harvard.	".....	Aurora.	".....
Etna.	".....	Chester.	".....
Medina.	".....	Vesta.	".....
Corea.	Dark green.....	Traverse.	".....

## GOAT No. 1922.

U. S. Regulation, for enlisted men of cavalry and artillery. Plain cloth ornaments.

Name of Cloth.		Name of Cloth.	
York.	Dark blue.....	Essex.	Light blue.....
Ashley.	".....	Oporto.	".....
Vermont.	".....	Drexel.	Gray.....
Jersey.	".....	Howell.	".....
Wabash.	".....	Newport.	".....
Dallas.	".....	Sumter.	".....
Oakland.	".....	Chelsea.	Black.....
Harvard.	".....	Aurora.	".....
Etna.	".....	Chester.	".....
Medina.	".....	Vesta.	".....
Corea.	Dark green.....	Traverse.	".....

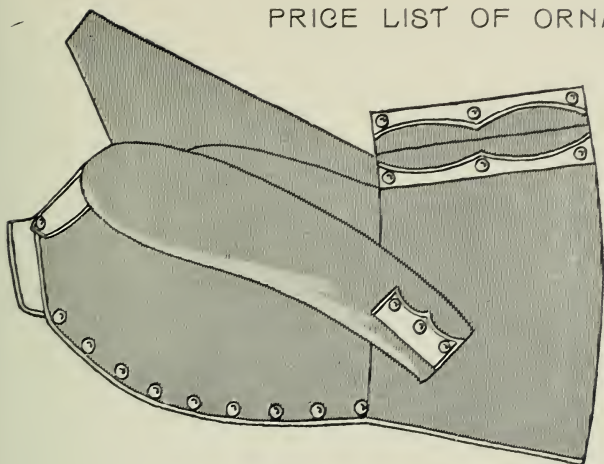
## GOAT No. 1923.

U. S. Regulation, for enlisted men of infantry. Plain cloth facings.

Name of Cloth.		Name of Cloth.	
York.	Dark blue.....	Essex.	Light blue.....
Ashley.	".....	Oporto.	".....
Vermont.	".....	Drexel.	Gray.....
Jersey.	".....	Howell.	".....
Wabash.	".....	Newport.	".....
Dallas.	".....	Sumter.	".....
Oakland.	".....	Chelsea.	Black.....
Harvard.	".....	Aurora.	".....
Etna.	".....	Chester.	".....
Medina.	".....	Vesta.	".....
Corea.	Dark green.....	Traverse.	".....



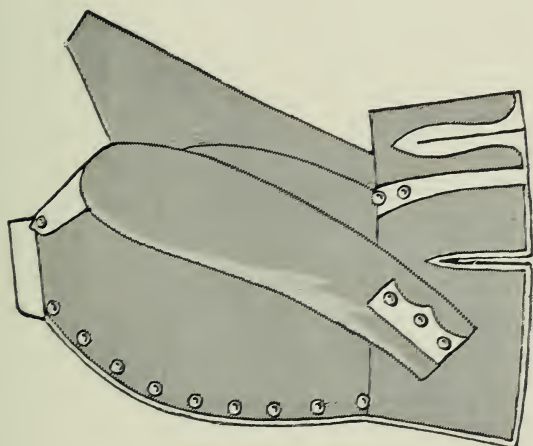
PRICE LIST OF ORNAMENTS.



COAT No. 1921.

CLOTH ORNAMENTS EDGED WITH  
NARROW PIPING OF CLOTH.

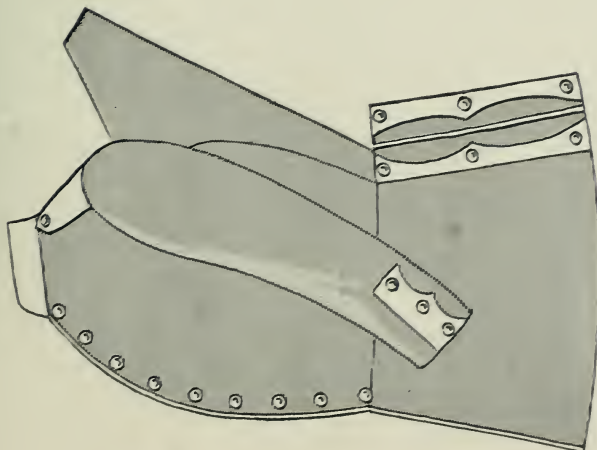
- No. 330. Sleeve . . . . . \$0 70
- No. 331. Collar . . . . . 65
- No. 332. Shoulder Straps 65
- No. 333. Skirt Fly . . . . 1 15



COAT No. 1922.

PLAIN CLOTH ORNAMENTS.

- No. 335. Sleeve . . . . . \$0 55
- No. 336. Collar . . . . . 15
- No. 337. Shoulder Straps 50
- No. 338. Skirt Fly . . . . 75



COAT No. 1923.

PLAIN CLOTH ORNAMENTS.

- No. 340. Sleeve . . . . . \$0 55
- No. 341. Collar . . . . . 15
- No. 342. Shoulder Straps 50
- No. 343. Skirt Fly . . . . 85

## COAT No. 1924.

Coat, for bands and military organizations, to be braided with narrow gilt or mohair soutache braid, with fancy cloth facings.

Name of Cloth.		Name of Cloth.	
York,	Dark blue.....	Essex,	Light blue.....
Ashley,	".....	Oporto,	".....
Vermont,	".....	Drexel,	Gray.....
Jersey,	".....	Howell,	".....
Wabash,	".....	Newport,	".....
Dallas,	".....	Sumter,	".....
Oakland,	".....	Chelsea,	Black.....
Harvard,	".....	Aurora,	".....
Ætna,	".....	Chester,	".....
Medina,	".....	Vesta,	".....
Corea,	Dark green.....	Traverse,	".....

## COAT No. 1925.

Coat, for military organizations or bands, to be braided with  $\frac{3}{8}$  inch wide silk or mohair braid.

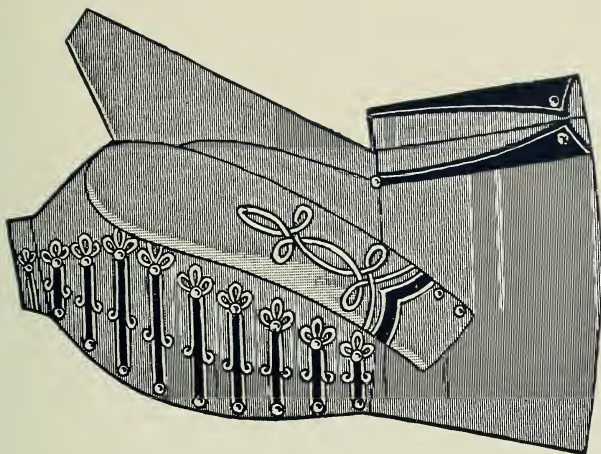
Name of Cloth.		Name of Cloth.	
York,	Dark blue.....	Essex,	Light blue.....
Ashley,	".....	Oporto,	".....
Vermont,	".....	Drexel,	Gray.....
Jersey,	".....	Howell,	".....
Wabash,	".....	Newport,	".....
Dallas,	".....	Sumter,	".....
Oakland,	".....	Chelsea,	Black.....
Harvard,	".....	Aurora,	".....
Ætna,	".....	Chester,	".....
Medina,	".....	Vesta,	".....
Corea,	Dark green.....	Traverse,	".....

## COAT No. 1926.

Coat, for military organizations or bands, to be braided with  $\frac{1}{2}$  inch gilt or mohair braid.

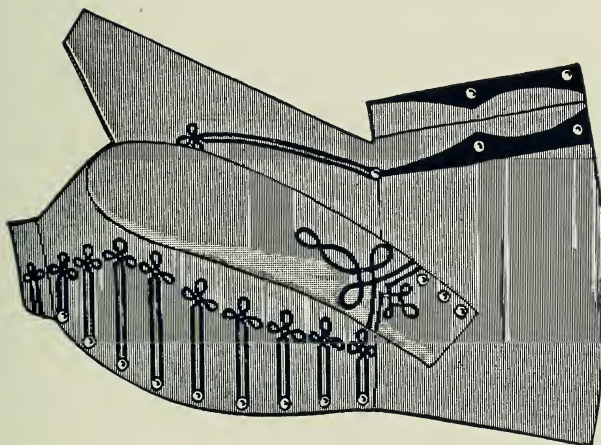
Name of Cloth.		Name of Cloth.	
York,	Dark blue.....	Essex,	Light blue.....
Ashley,	".....	Oporto,	".....
Vermont,	".....	Drexel,	Gray.....
Jersey,	".....	Howell,	".....
Wabash,	".....	Newport,	".....
Dallas,	".....	Sumter,	".....
Oakland,	".....	Chelsea,	Black.....
Harvard,	".....	Aurora,	".....
Ætna,	".....	Chester,	".....
Medina,	".....	Vesta,	".....
Corea,	Dark green.....	Traverse,	".....

PRICE LIST OF ORNAMENTS.



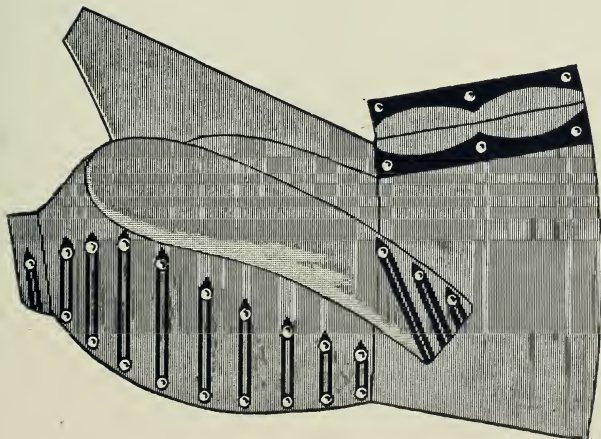
COAT No. 1924.

	Mohair or Gilt.	Gold.
No. 345. Breast ..	\$3 25	\$4 00
No. 346. Sleeve ..	70	90
No. 347. Collar ..	30	40
No. 348. Skirt Fly	55	70



COAT No. 1925.

	Mohair or Gilt.	Gold.
No. 349. Breast ..	\$1 65	\$2 35
No. 350. Sleeve ..	80	90
No. 351. Collar ..	35	40
No. 352. Skirt Fly	75	...
No. 353. Backseams	30	40



COAT No. 1926.

ORNAMENTS 1/2 INCH MOHAIR BRAID.

No. 354. Breast .....	\$2 65
No. 355. Sleeve .....	60
No. 356. Collar .....	25
No. 357. Skirt Fly .....	75

## EXAMPLE SELECTION T.

Coat No. 1929, cloth Drexel, black braiding and black facings . . . . .	\$18 00
Trousers, of cloth Ashley, with white stripe . . . . .	7 45
Cap . . . . .	3 00
Pompon . . . . .	50
Belt . . . . .	1 50
	<hr/>
	\$30 45

## EXAMPLE SELECTION U.

Coat No. 1928, cloth Aurora, gilt braiding and white facings . . . . .	\$24 00
Trousers, of cloth Aurora, with white cloth stripe . . . . .	9 15
Shako . . . . .	15 50
Belt . . . . .	1 50
	<hr/>
	\$50 15



T. BAND UNIFORMS.

U.

## COAT No. 1927.

Coat, for bands or military organizations, to be braided with narrow gilt or mohair soutache braid.

Name of Cloth.		Name of Cloth.	
York,	Dark blue.....	Essex,	Light blue.....
Ashley,	".....	Oporto,	".....
Vermont,	".....	Drexel,	Gray.....
Jersey,	".....	Howell,	".....
Wabash,	".....	Newport,	".....
Dallas,	".....	Sumter,	".....
Oakland,	".....	Chelsea,	Black.....
Harvard,	".....	Aurora,	".....
Ætna,	".....	Chester,	".....
Medina,	".....	Vesta,	".....
Corea,	Dark green.....	Traverse,	".....

## COAT No. 1928.

Coat, for military organizations or bands, to be trimmed with fancy cloth facings and braided with gilt or mohair soutache braid.

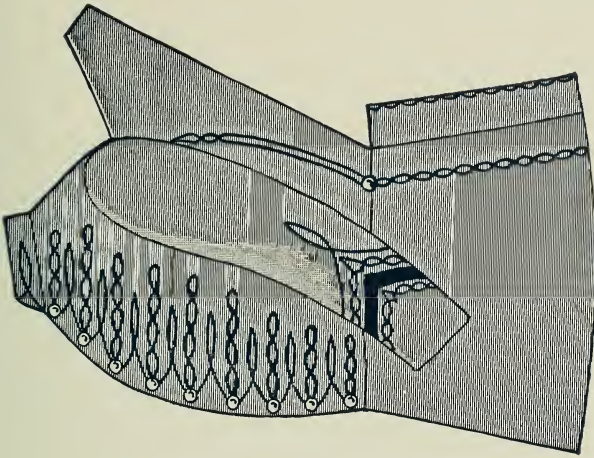
Name of Cloth.		Name of Cloth.	
York,	Dark blue.....	Essex,	Light blue.....
Ashley,	".....	Oporto,	".....
Vermont,	".....	Drexel,	Gray.....
Jersey,	".....	Howell,	".....
Wabash,	".....	Newport,	".....
Dallas,	".....	Sumter,	".....
Oakland,	".....	Chelsea,	Black.....
Harvard,	".....	Aurora,	".....
Ætna,	".....	Chester,	".....
Medina,	".....	Vesta,	".....
Corea,	Dark green.....	Traverse,	".....

## COAT No. 1929.

Coat, for bands or military organizations, to be braided with  $\frac{3}{8}$  inch wide silk or mohair braid.

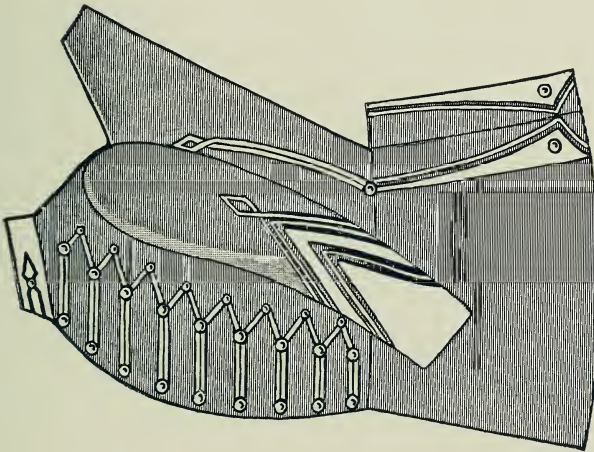
Name of Cloth.		Name of Cloth.	
York,	Dark blue.....	Essex,	Light blue.....
Ashley,	".....	Oporto,	".....
Vermont,	".....	Drexel,	Gray.....
Jersey,	".....	Howell,	".....
Wabash,	".....	Newport,	".....
Dallas,	".....	Sumter,	".....
Oakland,	".....	Chelsea,	Black.....
Harvard,	".....	Aurora,	".....
Ætna,	".....	Chester,	".....
Medina,	".....	Vesta,	".....
Corea,	Dark green.....	Traverse,	".....

PRICE LIST OF ORNAMENTS.



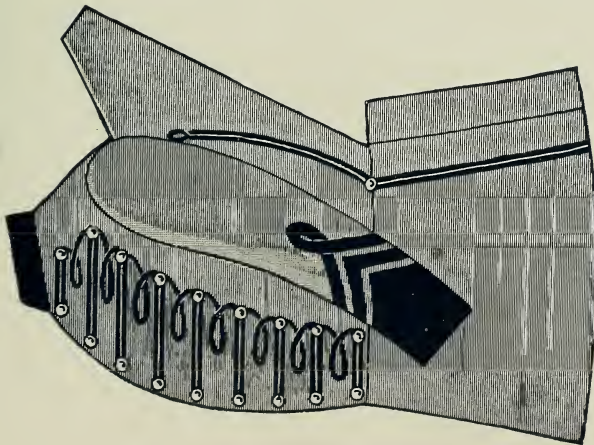
COAT No. 1927.

	Mohair or Gilt.	Gold.
No. 360. Breast ..	\$1 85	\$2 85
No. 361. Sleeve ..	70	1 00
No. 362. Collar ..	20	30
No. 363. Skirt Or- nament ...	30	50
No. 364. Backseams	30	50



COAT No. 1928.

	Mohair or Gilt.	Gold.
No. 365. Breast ..	\$2 70	\$3 30
No. 366. Sleeve ..	2 00	2 35
No. 367. Collar ..	40	55
No. 368. Skirt Fly	75	85
No. 369. Backseams	30	50



COAT No. 1929.

	Mohair or Gilt.	Gold.
No. 370. Breast ..	\$3 60	\$4 30
No. 371. Sleeve ..	1 80	2 20
No. 372. Collar ..	15	...
No. 373. Skirt Or- nament ...	30	40
No. 374. Backseams	30	50

## COAT No. 1930.

Coat, for bands, to be trimmed with fancy cloth facings, edged with narrow gilt or mohair soutache braid.

Name of Cloth.		Name of Cloth.	
York,	Dark blue.....	Essex,	Light blue.....
Ashley,	".....	Oporto,	".....
Vermont,	".....	Drexel,	Gray.....
Jersey,	".....	Howell,	".....
Wabash,	".....	Newport,	".....
Dallas,	".....	Sumter,	".....
Oakland,	".....	Chelsea,	Black.....
Harvard,	".....	Aurora,	".....
Ætna,	".....	Chester,	".....
Medina,	".....	Vesta,	".....
Corea,	Dark green.....	Traverse,	".....

## COAT No. 1931.

Coat, for bands, to be trimmed with fancy cloth facings and braided with narrow gilt or mohair soutache braid.

Name of Cloth.		Name of Cloth.	
York,	Dark blue.....	Essex,	Light blue.....
Ashley,	".....	Oporto,	".....
Vermont,	".....	Drexel,	Gray.....
Jersey,	".....	Howell,	".....
Wabash,	".....	Newport,	".....
Dallas,	".....	Sumter,	".....
Oakland,	".....	Chelsea,	Black.....
Harvard,	".....	Aurora,	".....
Ætna,	".....	Chester,	".....
Medina,	".....	Vesta,	".....
Corea,	Dark green.....	Traverse,	".....

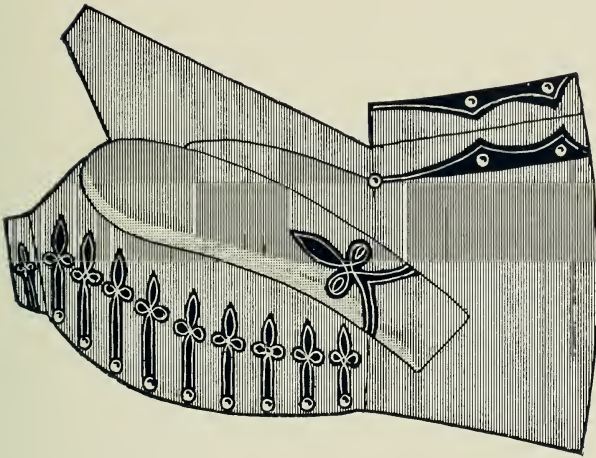
## COAT No. 1932.

Coat, for bands, to be trimmed with fancy cloth facings and braided with narrow gilt or mohair soutache braid.

Name of Cloth.		Name of Cloth.	
York,	Dark blue.....	Essex,	Light blue.....
Ashley,	".....	Oporto,	".....
Vermont,	".....	Drexel,	Gray.....
Jersey,	".....	Howell,	".....
Wabash,	".....	Newport,	".....
Dallas,	".....	Sumter,	".....
Oakland,	".....	Chelsea,	Black.....
Harvard,	".....	Aurora,	".....
Ætna,	".....	Chester,	".....
Medina,	".....	Vesta,	".....
Corea,	Dark green.....	Traverse,	".....

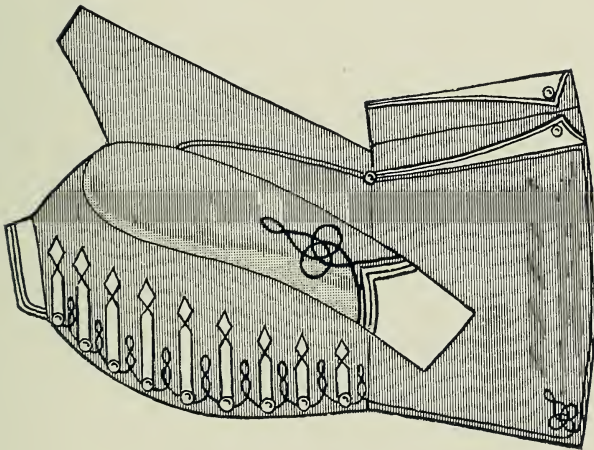


PRICE LIST OF ORNAMENTS.



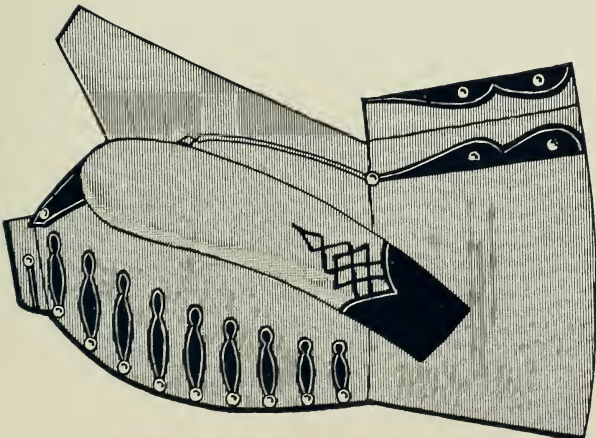
COAT No. 1930.

	Mohair or Gilt.	Gold.
No. 380. Breast . .	\$2 00	\$2 75
No. 381. Sleeve . .	75	1 00
No. 382. Collar . .	25	30
No. 383. Skirt Fly	75	85



COAT No. 1931.

	Mohair or Gilt.	Gold.
No. 384. Breast . .	\$2 55	\$3 40
No. 385. Sleeve . .	1 50	2 00
No. 386. Skirt		
Front . . . . .	30	45
No. 387. Skirt Fly	65	80
No. 388. Collar . .	25	30
No. 389. Backseams	30	50



COAT No. 1932.

	Mohair or Gilt.	Gold.
No. 390. Breast . .	\$2 20	\$2 80
No. 391. Sleeve . .	1 45	1 80
No. 392. Collar . .	20	25
No. 393. Shoulder		
Straps . . . . .	60	70
No. 394. Skirt Fly	70	90
No. 395. Backseams	30	50

## COAT No. 1933.

Coat, for bands, to be braided with  $\frac{1}{2}$  inch wide mohair braid and edged with narrow gilt or mohair soutache braid.

Name of Cloth.		Name of Cloth.	
York,	Dark blue.....	Essex,	Light blue.....
Ashley,	".....	Oporto,	".....
Vermont,	".....	Drexel,	Gray.....
Jersey,	".....	Howell,	".....
Wabash,	".....	Newport,	".....
Dallas,	".....	Sunter,	".....
Oakland,	".....	Chelsea,	Black.....
Harvard,	".....	Aurora,	".....
Ætna,	".....	Chester,	".....
Medina,	".....	Vesta,	".....
Corea,	Dark green.....	Traverse,	".....

## COAT No. 1934.

Coat, for bands, to be braided with narrow gilt or mohair soutache braid.

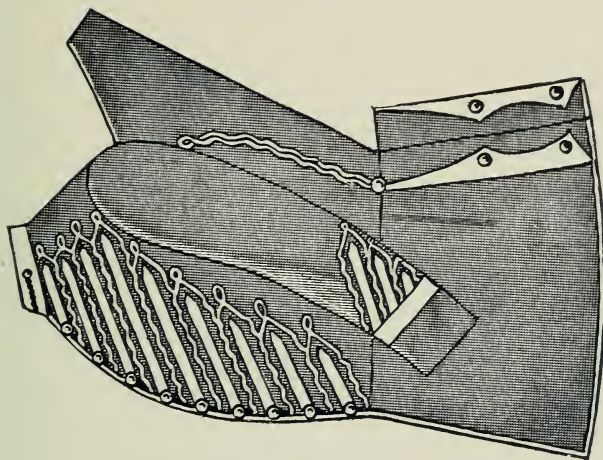
Name of Cloth.		Name of Cloth.	
York,	Dark blue.....	Essex,	Light blue.....
Ashley,	".....	Oporto,	".....
Vermont,	".....	Drexel,	Gray.....
Jersey,	".....	Howell,	".....
Wabash,	".....	Newport,	".....
Dallas,	".....	Sunter,	".....
Oakland,	".....	Chelsea,	Black.....
Harvard,	".....	Aurora,	".....
Ætna,	".....	Chester,	".....
Medina,	".....	Vesta,	".....
Corea,	Dark green.....	Traverse,	".....

## COAT No. 1935.

Coat, for bands, to be braided with  $\frac{1}{2}$  inch wide mohair braid.

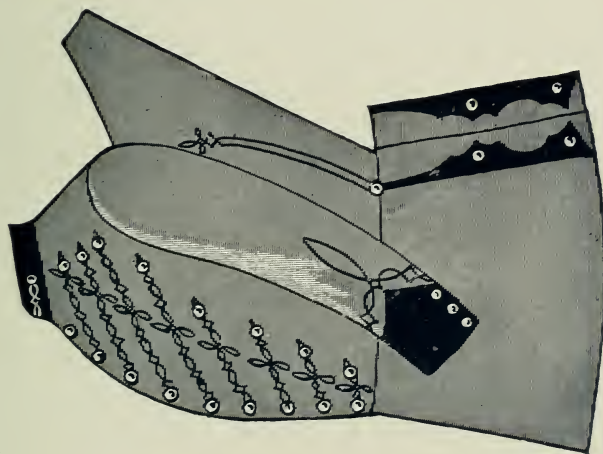
Name of Cloth.		Name of Cloth.	
York,	Dark blue.....	Essex,	Light blue.....
Ashley,	".....	Oporto,	".....
Vermont,	".....	Drexel,	Gray.....
Jersey,	".....	Howell,	".....
Wabash,	".....	Newport,	".....
Dallas,	".....	Sunter,	".....
Oakland,	".....	Chelsea,	Black.....
Harvard,	".....	Aurora,	".....
Ætna,	".....	Chester,	".....
Medina,	".....	Vesta,	".....
Corea,	Dark green.....	Traverse,	".....

PRICE LIST OF ORNAMENTS.



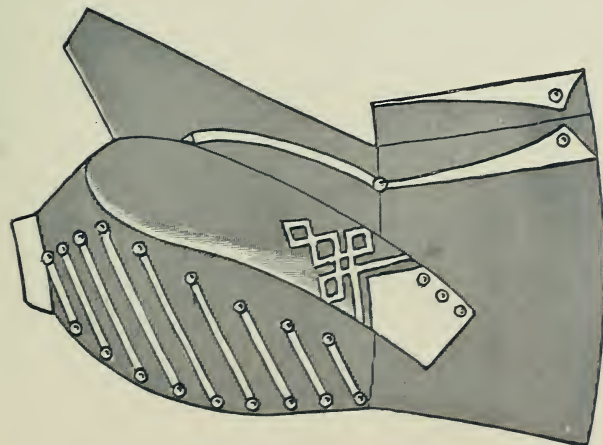
COAT No. 1933.

	Gilt.	Gold.
No. 400. Breast ..	\$2 90	\$3 75
No. 401. Sleeve ..	90	1 25
No. 402. Collar ..	25	30
No. 403. Skirt Fly	75	85
No. 404. Backseams	30	50



COAT No. 1934.

	Gilt.	Gold.
No. 405. Breast ..	\$2 90	\$3 60
No. 406. Sleeve ..	1 20	1 40
No. 407. Collar ..	25	30
No. 408. Skirt Fly	85	...
No. 409. Backseams	30	50



COAT No. 1935.

	Gilt.	Gold.
No. 410. Breast ..	\$2 60	\$3 00
No. 411. Sleeve ..	1 10	1 35
No. 412. Collar ..	15	...
No. 413. Skirt Fly	40	...
No. 414. Backseams	20	50

## COAT No. 1936.

Coat, for bands and drum majors, to be trimmed with fancy cloth facings and braided with narrow gilt or mohair soutache braid.

Name of Cloth.		Name of Cloth.	
York,	Dark blue.....	Essex,	Light blue.....
Ashley,	" .....	Oporto,	" .....
Vermont,	" .....	Drexel,	Gray .....
Jersey,	" .....	Howell,	" .....
Wabash,	" .....	Newport,	" .....
Dallas,	" .....	Sunter,	" .....
Oakland,	" .....	Chelsea,	Black.....
Harvard,	" .....	Aurora,	" .....
Ætna,	" .....	Chester,	" .....
Medina,	" .....	Vesta,	" .....
Corea,	Dark green.....	Traverse,	" .....

## COAT No. 1937.

Coat, for bands and drum majors, to be trimmed with fancy cloth facings and braided with narrow gilt or mohair soutache braid.

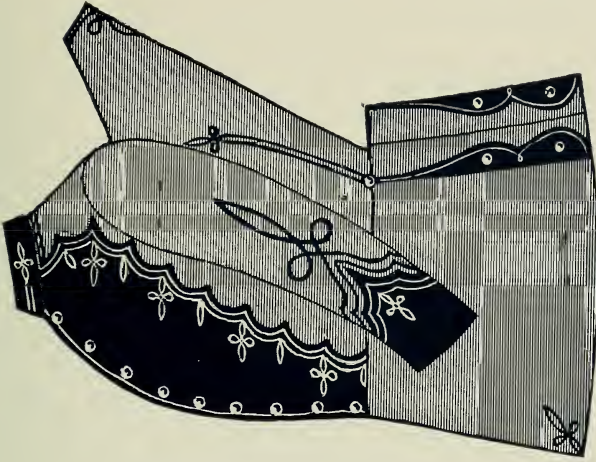
Name of Cloth.		Name of Cloth.	
York,	Dark blue.....	Essex,	Light blue.....
Ashley,	" .....	Oporto,	" .....
Vermont,	" .....	Drexel,	Gray .....
Jersey,	" .....	Howell,	" .....
Wabash,	" .....	Newport,	" .....
Dallas,	" .....	Sunter,	" .....
Oakland,	" .....	Chelsea,	Black.....
Harvard,	" .....	Aurora,	" .....
Ætna,	" .....	Chester,	" .....
Medina,	" .....	Vesta,	" .....
Corea,	Dark green.....	Traverse,	" .....

## COAT No. 1938.

Coat, for bands and drum majors, to be trimmed with fancy cloth facings and to be braided with narrow gilt or mohair soutache braid.

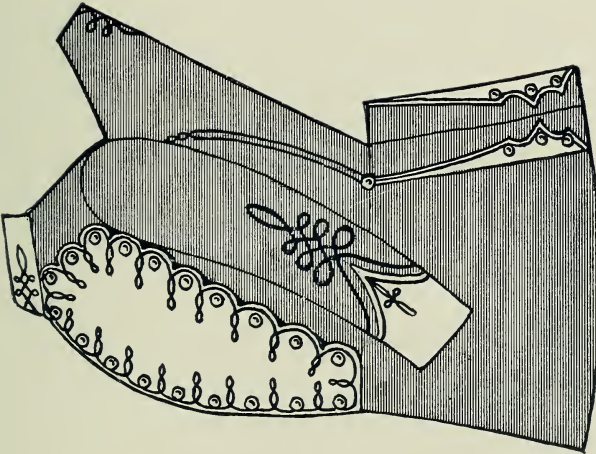
Name of Cloth.		Name of Cloth.	
York,	Dark blue.....	Essex,	Light blue.....
Ashley,	" .....	Oporto,	" .....
Vermont,	" .....	Drexel,	Gray .....
Jersey,	" .....	Howell,	" .....
Wabash,	" .....	Newport,	" .....
Dallas,	" .....	Sunter,	" .....
Oakland,	" .....	Chelsea,	Black.....
Harvard,	" .....	Aurora,	" .....
Ætna,	" .....	Chester,	" .....
Medina,	" .....	Vesta,	" .....
Corea,	Dark green.....	Traverse,	" .....

PRICE LIST OF ORNAMENTS.



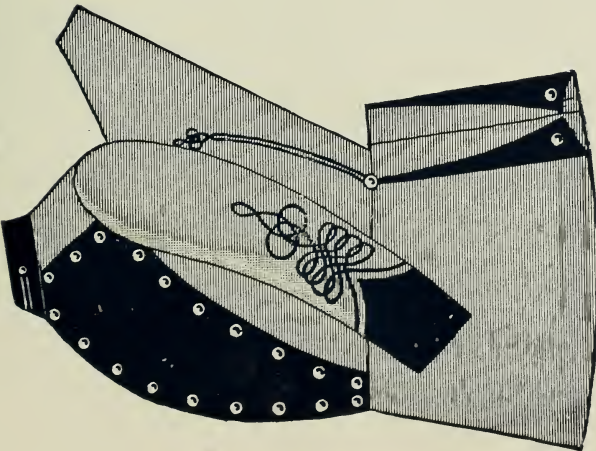
COAT No. 1936.

	Gilt.	Gold.
No. 420. Plastron.	\$3 20	\$3 60
No. 421. Sleeve ..	1 45	1 80
No. 423. Skirt Fly	75	85
No. 424. Collar ..	25	30
No. 425. Backseams	30	50
No. 426. Back of Neck .....	20	25



COAT No. 1937.

	Gilt.	Gold.
No. 427. Plastron.	\$4 60	\$5 00
No. 428. Sleeve ..	1 40	1 70
No. 429. Skirt Fly	85	95
No. 430. Collar ..	35	45
No. 431. Backseams	30	50
No. 432. Back of Neck .....	20	30



COAT No. 1938.

	Gilt.	Gold.
No. 433. Plastron.	\$3 60	....
No. 434. Sleeve ..	1 20	\$1 50
No. 435. Skirt Fly	40	....
No. 436. Collar ..	25	30
No. 437. Backseams	30	50

## EXAMPLE SELECTION V.

Coat No. 1939, of white cloth Syria, black facings and gold braiding . . . . .	\$28 30
Trousers of cloth Essex, with wide white stripe and one inch gold lace in the center . . . . .	13 00
Epaulettes . . . . .	7 50
Foxskin Shako . . . . .	20 00
Baton . . . . .	10 60
Dress Belt . . . . .	5 00
	<hr/>
	\$84 40

## EXAMPLE SELECTION W.

Coat No. 1941, cloth Medina, buff facings and gold braiding . . . . .	\$38 60
Trousers of cloth Saladin, with two one inch buff stripes . . . . .	18 00
Epaulettes . . . . .	10 00
Bearskin Shako . . . . .	40 00
Cap . . . . .	4 50
Dress Belt . . . . .	5 00
Baton . . . . .	12 50
	<hr/>
	\$128 60



V. DRUM-MAJOR'S UNIFORMS. W.

## COAT No. 1939.

Coat, for drum majors, to be trimmed with fancy cloth facings and braided with narrow gilt or mohair soutache braid.

Name of Cloth.		Name of Cloth.	
York,	Dark blue . . . . .	Essex,	Light blue . . . . .
Ashley,	" . . . . .	Oporto,	" . . . . .
Vermont,	" . . . . .	Drexel,	Gray . . . . .
Jersey,	" . . . . .	Howell,	" . . . . .
Wabash,	" . . . . .	Newport,	" . . . . .
Dallas,	" . . . . .	Sunter,	" . . . . .
Oakland,	" . . . . .	Chelsea,	Black . . . . .
Harvard,	" . . . . .	Aurora,	" . . . . .
Ætna,	" . . . . .	Chester,	" . . . . .
Medina,	" . . . . .	Vesta,	" . . . . .
Corea,	Dark green . . . . .	Traverse,	" . . . . .
	\$20 60		\$28 60
	22 00		29 60
	23 20		22 25
	24 30		24 30
	25 25		28 60
	28 60		28 60
	29 60		21 00
	34 70		23 70
	36 60		24 30
	40 00		25 25
	28 60		28 60

## COAT No. 1940.

Coat, for drum majors, to be trimmed with fancy cloth facings and braided with gilt or mohair braid.

Name of Cloth.		Name of Cloth.	
York,	Dark blue . . . . .	Essex,	Light blue . . . . .
Ashley,	" . . . . .	Oporto,	" . . . . .
Vermont,	" . . . . .	Drexel,	Gray . . . . .
Jersey,	" . . . . .	Howell,	" . . . . .
Wabash,	" . . . . .	Newport,	" . . . . .
Dallas,	" . . . . .	Sunter,	" . . . . .
Oakland,	" . . . . .	Chelsea,	Black . . . . .
Harvard,	" . . . . .	Aurora,	" . . . . .
Ætna,	" . . . . .	Chester,	" . . . . .
Medina,	" . . . . .	Vesta,	" . . . . .
Corea,	Dark green . . . . .	Traverse,	" . . . . .
	\$23 60		\$33 20
	25 00		34 20
	26 20		25 25
	27 35		27 35
	28 30		33 20
	33 20		33 20
	34 20		24 00
	39 30		26 60
	41 20		27 35
	44 40		28 30
	33 20		33 20

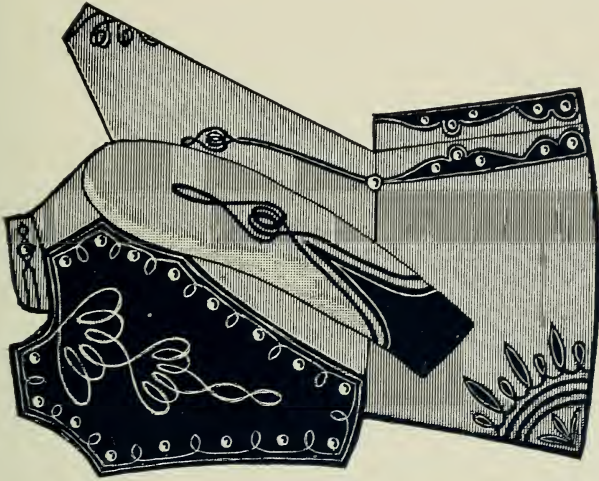
## COAT No. 1941.

Coat, for drum majors, to be braided with narrow gilt or mohair soutache braid.

Name of Cloth.		Name of Cloth.	
York,	Dark blue . . . . .	Essex,	Light blue . . . . .
Ashley,	" . . . . .	Oporto,	" . . . . .
Vermont,	" . . . . .	Drexel,	Gray . . . . .
Jersey,	" . . . . .	Howell,	" . . . . .
Wabash,	" . . . . .	Newport,	" . . . . .
Dallas,	" . . . . .	Sunter,	" . . . . .
Oakland,	" . . . . .	Chelsea,	Black . . . . .
Harvard,	" . . . . .	Aurora,	" . . . . .
Ætna,	" . . . . .	Chester,	" . . . . .
Medina,	" . . . . .	Vesta,	" . . . . .
Corea,	Dark green . . . . .	Traverse,	" . . . . .
	\$18 75		\$27 30
	20 20		28 30
	21 30		20 40
	22 50		22 50
	23 50		27 30
	27 30		27 30
	28 30		19 25
	34 40		21 80
	35 30		22 50
	38 60		23 50
	27 30		27 30

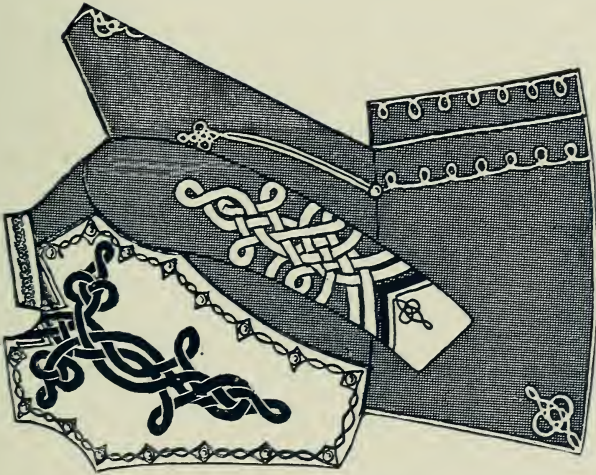


PRICE LIST OF ORNAMENTS.



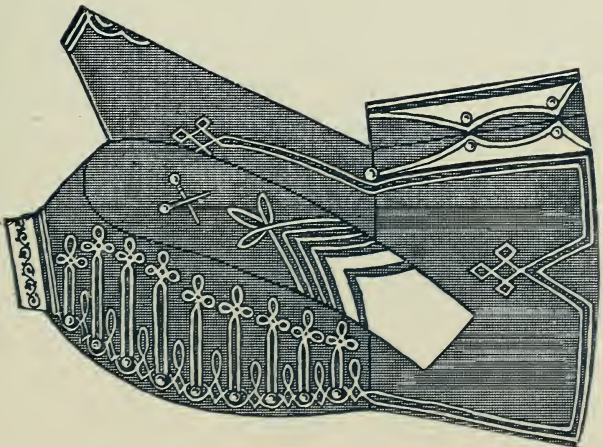
COAT No. 1939.

	Gilt.	Gold.
No. 440. Plastron.	\$4 45	\$5 00
No. 441. Sleeve ..	1 60	2 00
No. 442. Skirt		
Front .....	1 00	1 40
No. 443. Skirt Fly	1 20	1 35
No. 444. Collar ..	40	50
No. 445. Backseams	30	50
No. 446. Back of		
Neck .....	45	60



COAT No. 1940.

	Gilt.	Gold.
No. 447. Plastron.	\$4 00	\$5 50
No. 448. Sleeve ..	3 60	\$5 00
No. 449. Skirt		
Front .....	45	55
No. 450. Skirt Fly	50	60
No. 451. Collar ..	1 25	2 00
No. 452. Backseams	60	75
No. 453. Back of		
Neck .....	50	60



COAT No. 1941.

	Gilt.	Gold.
No. 454. Breast ..	\$2 00	\$2 80
No. 455. Sleeve ..	1 50	2 00
No. 457. Skirt Fly	60	80
No. 458. Collar ..	1 25	2 00
No. 459. Backseams	30	50
No. 460. Back of		
Neck .....	50	60

## COAT No. 1951.

Hussar Tunic, to be braided with silk or mohair braid or gold cord and narrow gilt or mohair soutache braid on sleeves.

Name of Cloth.		Name of Cloth.	
Ashley,	Dark blue.....	Essex,	Light blue.....
Vermont,	".....	Oporto,	".....
Jersey,	".....	Drexel,	Gray.....
Wabash,	".....	Howell,	".....
Dallas,	".....	Newport,	".....
Oakland,	".....	Sumter,	".....
Harvard,	".....	Aurora,	Black.....
Ætna,	".....	Chester,	".....
Medina,	".....	Vesta,	".....
Corea,	Dark green.....	Traverse,	".....

## COAT No. 1952.

Hussar Tunic, to be braided with gilt or mohair cord or soutache braid, edging of braid 1 inch wide.

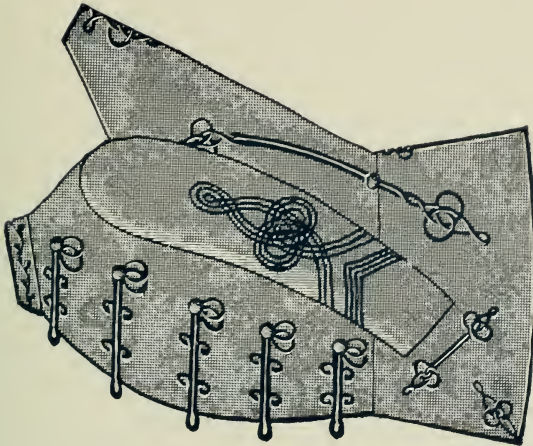
Name of Cloth.		Name of Cloth.	
Ashley,	Dark blue.....	Essex,	Light blue.....
Vermont,	".....	Oporto,	".....
Jersey,	".....	Drexel,	Gray.....
Wabash,	".....	Howell,	".....
Dallas,	".....	Newport,	".....
Oakland,	".....	Sumter,	".....
Harvard,	".....	Aurora,	Black.....
Ætna,	".....	Chester,	".....
Medina,	".....	Vesta,	".....
Corea,	Dark green.....	Traverse,	".....

## COAT No. 1953.

Hussar Tunic, to be braided with wide gilt or mohair soutache braid.

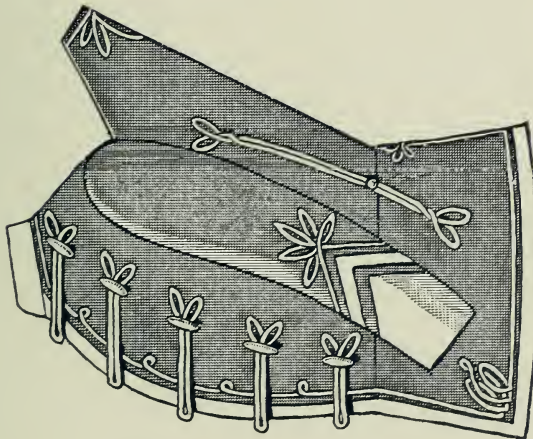
Name of Cloth.		Name of Cloth.	
Ashley,	Dark blue.....	Essex,	Light blue.....
Vermont,	".....	Oporto,	".....
Jersey,	".....	Drexel,	Gray.....
Wabash,	".....	Howell,	".....
Dallas,	".....	Newport,	".....
Oakland,	".....	Sumter,	".....
Harvard,	".....	Aurora,	Black.....
Ætna,	".....	Chester,	".....
Medina,	".....	Vesta,	".....
Corea,	Dark green.....	Traverse,	".....

PRICE LIST OF ORNAMENTS.



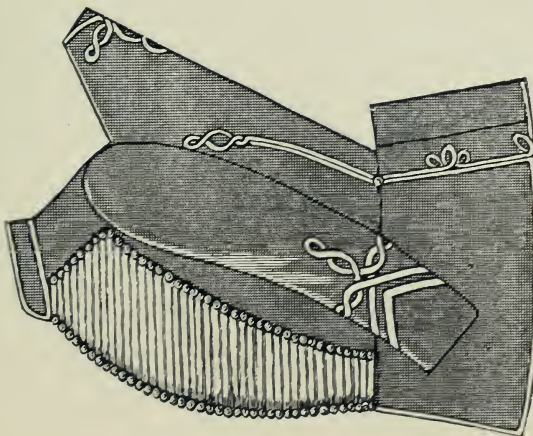
COAT No. 1951.

	Gilt.	Gold.
No. 465. Breast . . .	\$3 50	\$4 00
No. 466. Sleeve . . .	2 25	2 70
No. 467. Collar (em- broidered) . . .	1 25	2 00
No. 468. Skirt Front	1 25	1 45
No. 469. Skirt Back.	90	1 10
No. 470. Backseams.	1 00	1 20
No. 472. Back of Neck . . . . .	65	75



COAT No. 1952.

	Gilt.	Gold.
No. 473. Breast . . .	\$3 45	\$3 80
No. 474. Sleeve . . .	1 50	2 00
No. 475. Collar . . .	15	. . .
No. 476. Skirt Front	35	45
No. 477. Skirt Back.	45	65
No. 478. Backseams.	45	65
No. 479. Back of Neck . . . . .	30	35



COAT No. 1953.

	Gilt.	Gold.
No. 480. Breast . . .	\$8 60	\$9 60
No. 481. Sleeve . . .	1 35	1 55
No. 482. Collar . . .	20	25
No. 483. Skirt Back.	1 00	1 20
No. 484. Backseams.	45	65
No. 485. Back of Neck . . . . .	35	45

## CONTINENTAL UNIFORMS.

## PRIVATE.

Coat of blue cloth Ashley, with facings and false vest of buff cloth . . . . .	\$21 75
White Worsted Tights . . . . .	6 25
Continental Hat . . . . .	2 25
Brown Duck Leggings . . . . .	3 00
White Webb Cross Belts and Breast Plate . . . . .	1 00
Cartridge Box . . . . .	3 50
	<u>37 75</u>

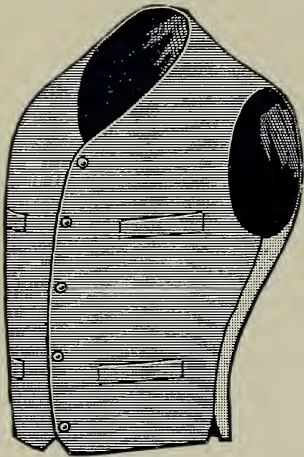
## OFFICER.

Coat of blue cloth Jersey, with false vest and facings of buff cloth . . . . .	\$25 00
White Worsted Tights . . . . .	6 25
Continental Hat . . . . .	4 50
Gold Epaulettes . . . . .	5 00
Black Enameled Leggings . . . . .	7 00
	<u>47 75</u>

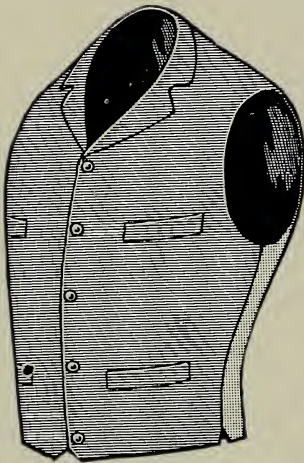


PRIVATE. CONTINENTAL UNIFORMS. OFFICER.

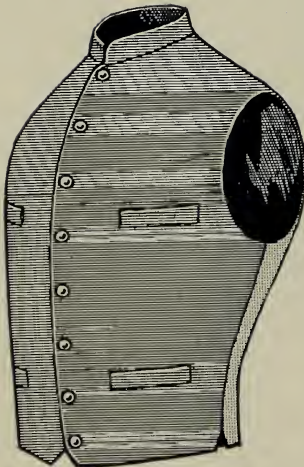
PRICE LIST OF VESTS.



No. 1966.



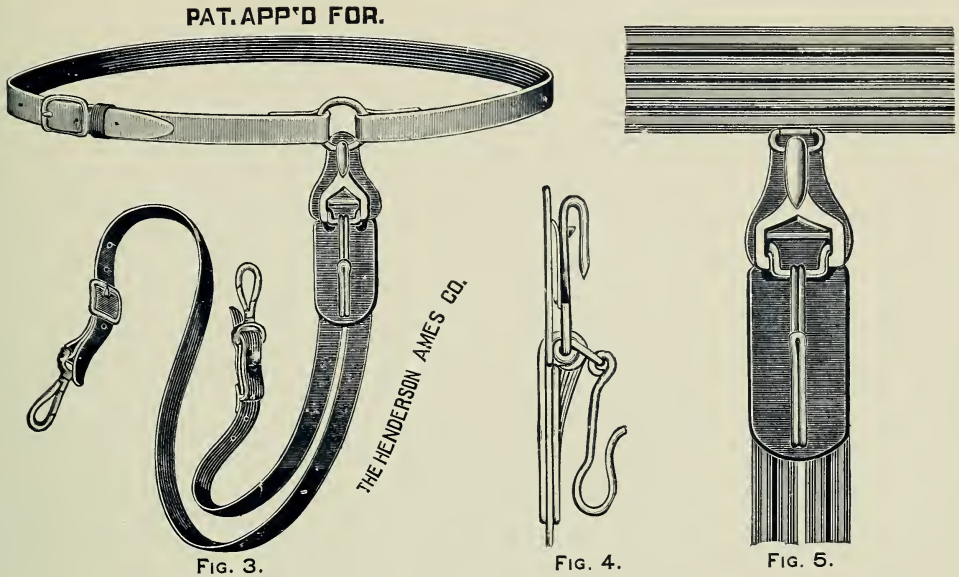
No. 1967.



No. 1968.

NAME OF CLOTH.		No. 1966.	No. 1967	No. 1968.
York,	Dark blue.....	\$3 65	\$3 90	\$4 15
Ashley,	" .....	4 00	4 25	4 50
Vermont,	" .....	4 25	4 50	4 70
Jersey,	" .....	4 60	4 80	5 10
Wabash,	" .....	5 40	5 65	6 00
Dallas,	" .....	5 65	5 90	6 25
Oakland,	" .....	5 90	6 20	6 50
Harvard,	" .....	7 45	7 70	8 10
Ætna,	" .....	8 00	8 20	8 55
Medina,	" .....	8 75	9 00	9 35
Chelsea,	Black.....	3 80	4 00	4 30
Aurora,	" .....	4 40	4 65	4 90
Chester,	" .....	4 60	4 80	5 10
Vesta,	" .....	5 40	5 65	6 00
Traverse,	" .....	5 65	5 90	6 25
Drexel,	Gray .....	4 00	4 30	4 50
Howell,	" .....	4 60	4 80	5 10
Newport,	" .....	5 65	5 90	6 25
Sumter,	" .....	5 65	5 90	6 25
Corea,	Dark green.....	5 65	5 90	6 25
Mecca,	Light green .....	5 40	5 65	6 00
Syria,	White .....	5 40	5 65	6 00
Tangier,	" .....	8 00	8 20	8 55
Coronado,	Buff.....	5 40	5 65	6 00
Saladin,	Scarlet .....	8 00	8 20	8 55
Carisa,	Yellow .....	5 40	5 65	6 00
Belfast (Linen),	White .....	5 40	5 65	6 00

## A NEW PATENT REGULATION SWORD BELT.



Subsequent to the adoption of the new regulation blouse for officers of the U. S. Army and National Guard, there has developed a constantly increasing demand for a Sword Belt that would prove lighter and stronger than the old style belt and at the same time be better adapted for use with the new blouse.

We have accomplished this to the extreme satisfaction of all interested parties who have seen our new invention.

**Figure 3** of the above illustrations shows the Fatigue Belt complete: A plain leather strap to go around the waist under the coat and fasten with a gilt tongue buckle (which facilitates drawing it down to any desired size without preadjustment). To the ring, which is securely fastened so that it will come over the left hip, is hooked the slings with an ingenious arrangement, which joins all the essential parts of the belt, with a view of securing increased strength over the old style and at the same time adding to the natty appearance of the soldier wearing it, by allowing the sword hook only to emerge through the slit in the side of the blouse.

**Figure 4** presents a side view of the snap hook and sword hook. Particular attention is called to the spring snap, which renders it impossible that the slings should become disengaged from the belt unless the spring is released. The sword hook is not susceptible to the every movement of the slings and will always be found in the same position, when drawing or returning sword.

**Figure 5** illustrates our invention made equally applicable to the dress belt. It adds much to the strength and appearance of the belt, and when desired the slings can be detached for packing.

We will gladly furnish quotations on application.

## A BELT THAT HAS MANY MERITS.

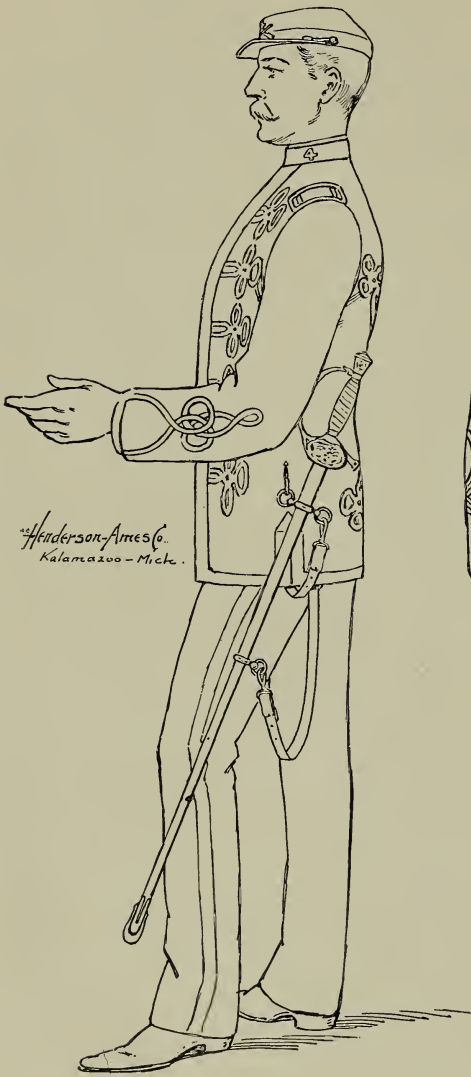


FIG. 1.

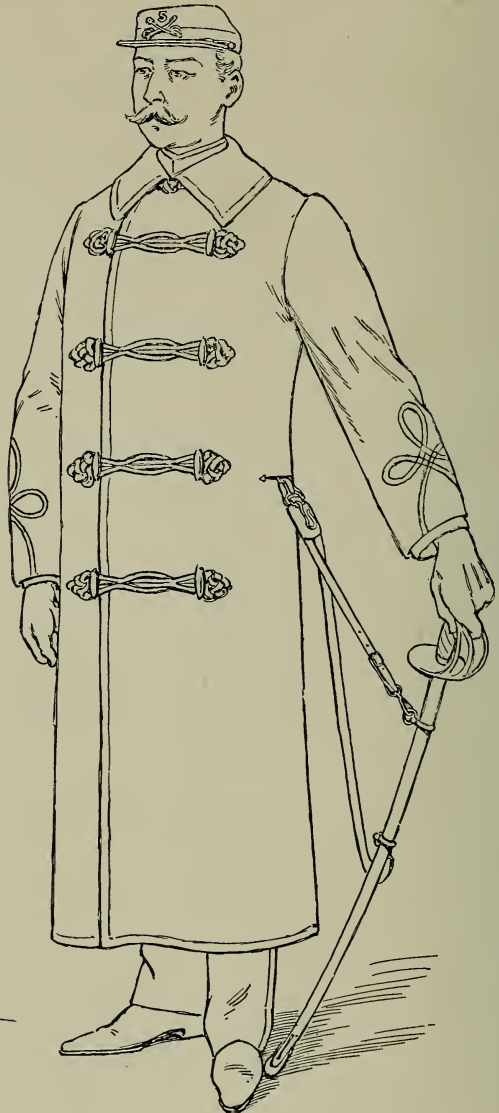


FIG. 2.

Fig. 1 shows belt when worn with the new regulation fatigue blouse. The hook only emerges through the slit in the side of the blouse, the slings emerging at the lower edge of the skirt.

Fig. 2 shows belt when worn with regulation overcoat. Both slings, together with sword hook, emerge through a horizontal slit at left side of coat.

### A PATENT ARTICLE THAT IS WORTH INVESTIGATING.

Every officer who has worn the new regulation fatigue blouse fully appreciates that the old style fatigue belt is not altogether applicable for the requirements, and that there was vast room for improvement.

Every officer who has worn the sword belt with the officer's regulation overcoat will recognize the advantage of having both slings emerge from one opening. Every officer who has endeavored to roll and pack his dress belt, will welcome an opportunity to detach the slings and roll them separately.

A simultaneous improvement in construction and **reduction in price** must necessarily meet with universal approbation.



# MASONIC DEPARTMENT.

## CATALOGUES FOR EVERY BRANCH OF MASONRY.

New Designs, Intelligent Descriptions and Reasonable Prices.

Blue Lodge Regalia, Paraphernalia and Supplies.

Chapter Regalia, Paraphernalia and Supplies.

Commandery Regalia, Paraphernalia and Supplies.

Knights Templar Uniforms and Equipments.

Consistory Regalia, Paraphernalia and Supplies.

Mystic Shrine Supplies.

Flags and Banners.

---

**WRITE FOR CATALOGUES, DISCOUNTS AND SAMPLES.**

---

# I. O. O. F. DEPARTMENT.

## NEW CATALOGUES,

Elegantly Illustrated, Highly Descriptive, Latest Quotations, for each Branch of the I. O. O. F. Department.

Lodge Regalia, Paraphernalia and Supplies.

Encampment Regalia, Paraphernalia and Supplies.

Mounted Officers' Uniforms and Equipments.

Rebekah Lodge Supplies.

Canton Uniforms and Equipments.

Costumes for Degree Staffs.

Flags and Banners.

---

**CATALOGUES, DISCOUNTS AND SAMPLES MAILED ON APPLICATION.**

---

# K. OF P. DEPARTMENT.

**THIS DEPARTMENT IS EQUIPPED WITH THE MOST COMPLETE AND ELEGANT SET OF CATALOGUES PUBLISHED FOR THIS ORDER.**

Lodge Regalia, Paraphernalia and Supplies.

Amplified Outfits.

Uniform Rank K. of P. Uniforms.

Mounted Officers' K. of P. Uniforms.

Flags and Banners.

---

**EVERY CONTRACT FURNISHED HAS PROVED A STANDING ADVERTISEMENT.**

**WRITE FOR CATALOGUES, DISCOUNTS AND SAMPLES.**

---

# MISCELLANEOUS DEPARTMENTS.

Regalia, Paraphernalia, Supplies, Uniforms and Equipments furnished for the following Orders :

Knights of the Golden Eagle.

Knights of Malta.

United American Mechanics.

Jr. O. U. A. M.

Impd. Order Red Men.

B. P. Order of Elks.

Select Knights A. O. U. W.

Sons of St. George Uniforms.

Knights of Honor.

Catholic Knights of America.

Knights of St. John.

P. O. Sons of America.

---

We furnish numerous other Orders with their Supplies, and will quote prices on application for any kind of Paraphernalia and Regalia.

LIBRARY OF CONGRESS



0 014 080 193 8

