



Drawn from Nature by G. Lyon.

On Stone by D. Dighton.

A SAND WIND ON THE DESERT.



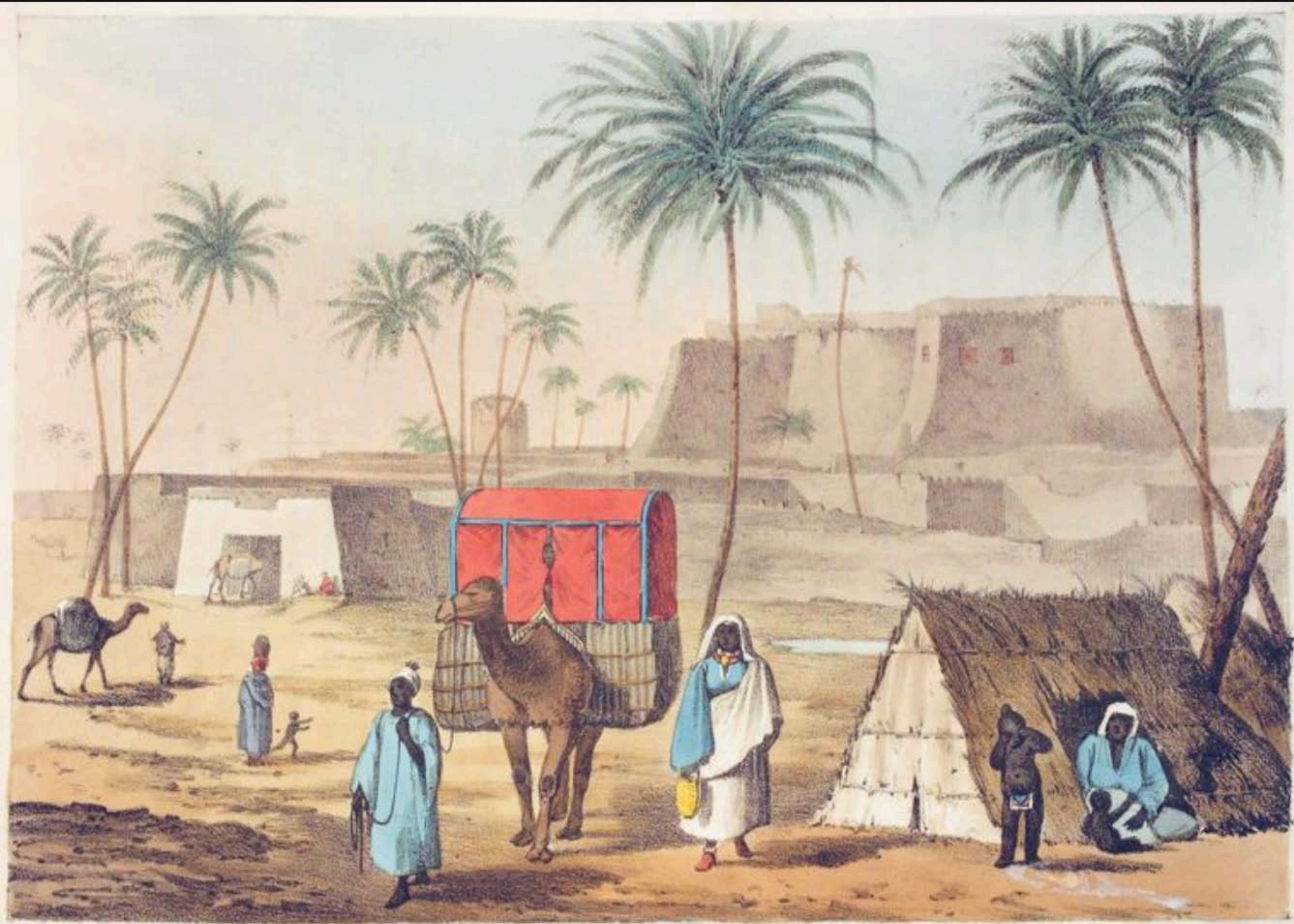
Drawn from Life by W.P. Lynn.

On Stone by M. Gauce

PIPER AND DANCER. TRIPOLI. DANCING WOMAN. SOCKNA.

London. Published by J. Murray Albemarle St. Feb. 1. 1821.

C. Hullmandel's Est. & Co. engravers



Engraved from a picture by G. P. Lyon.

Coloured by W. Dighton.

THE CASTLE OF MORZOUR.

London, Published by J. Murray Albion, 22, Abchurch Lane, 1851.



Drawn from Nature by G. P. Lyon

On Stone by M. Goussier

TUARICK IN A SHIRT OF LEATHER.

TUARICK OF AGHADES.

London. Published by J. Murray Albemarle St. 1827.

C. Hulbebrandt's Lithography.



Drawn from Life by G. R. Lyons.

On Stone by M. Gaudet.

COSTUME OF SOUDAN.

London: Published by J. Murray Albemarle St. Feb. 7. 1827.

C. Hullmann's Libreria



Drawn from life by J. B. Lewis

Engraved by M. Goussier

NEGRESSES OF SOUDAN.

London. Published by J. Murray Albemarle St. Feb. 1. 1821.



Drawn from Life by G. F. Lyon.

On Stone by M. Gaudet.

TIBBOO WOMAN IN FULL DRESS.

London. Published by J. Murray Albemarle St. Feb. 1 1821. —

C. Hullmandel's Lithography.



Drawn from life by G. K. Lyon.

On Stone by M. Gaudet.

TIBBOO OF GATRONE.

London. Published by J. Murray Albemarle St. Feb. 1. 1821.

C. Hullmandel's Lithography.



Drawn from Nature by G. R. Lyon.

On Poem by D. Brighten.

A SLAVE KAFFLE.

London: Published by J. Murray, Albemarle St. 57. 1834.



Femme Moresque



Barabra, Uomo e Donna di Dongola

Costume R. African

11077
Esq. 1805



Homme Barbaresque.



FISE JUNGE BORNUESIS

* 1840 (1847)

Young girl of Bornu

Nigeria

Africa

Costume - Rev - African



JUNGES MÄDCHEN AUS TIMBUKTU.

H. H. H. (1847)
Girl of Timbuktu
French West Africa

Costume - Rev - African



THE PERRY PICTURES. 1870. P.

COPYRIGHT, 1899, BY E. A. PERRY, MALDEN, MASS.

NATIVES OF EAST COAST, AFRICA.

Costume-R. African (Gen.)

N. Y. PUBLIC LIBRARY
PICTURE COLLECTION

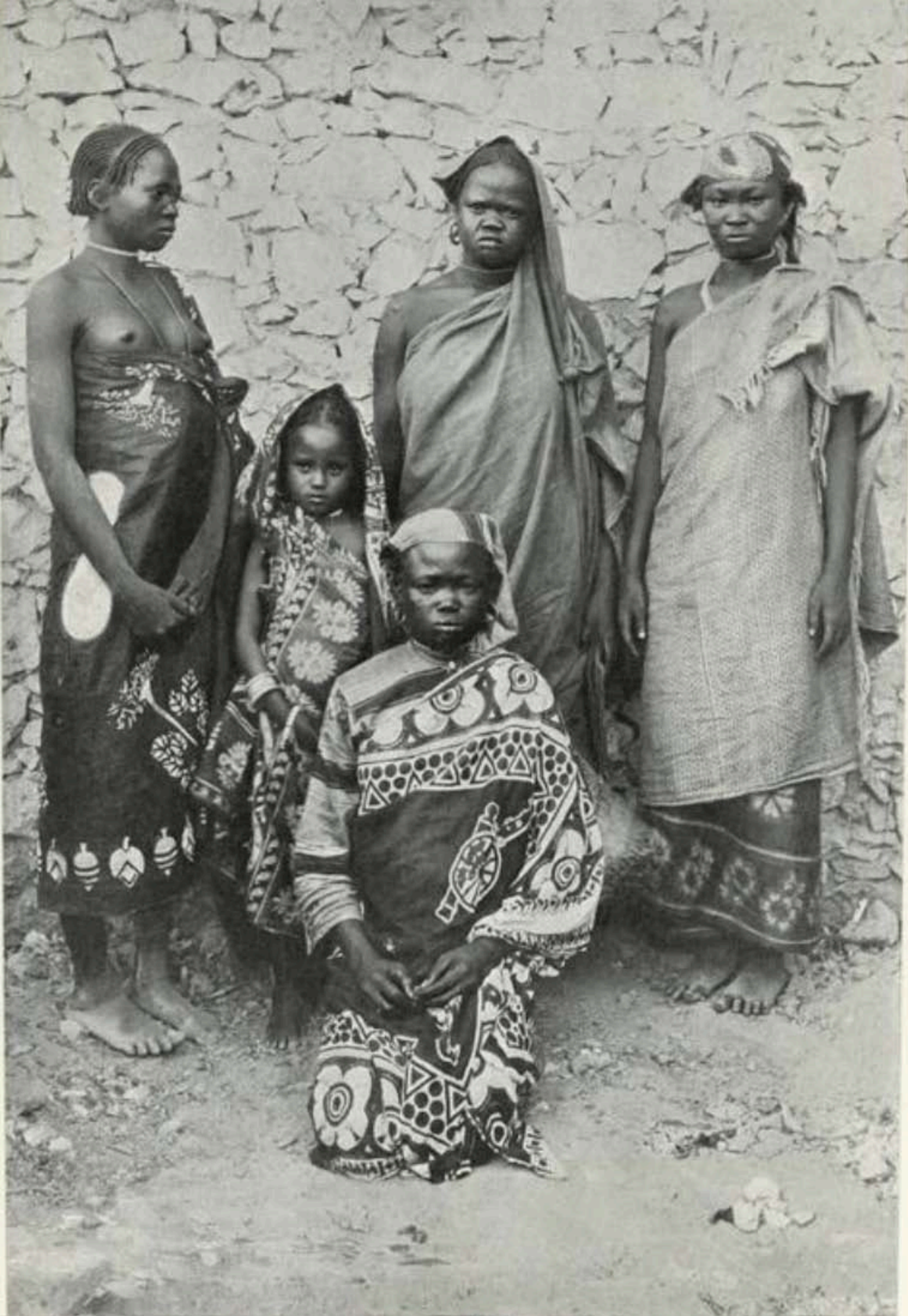


Photo by Lebyina & Co.

1928

1000

TYPICAL WOMEN OF THE EQUATORIAL REGION.

315

Costume - R. African

H. Y. F. 44
PICTURE COLLECTION



NOMADISIRENDER ARABER ODER BEDUINE.

WILHELM, (1853)

Soldaten

Costums - R. African (Gen)

N. Y. PUBLIC LIBRARY
PICTURE COLLECTION

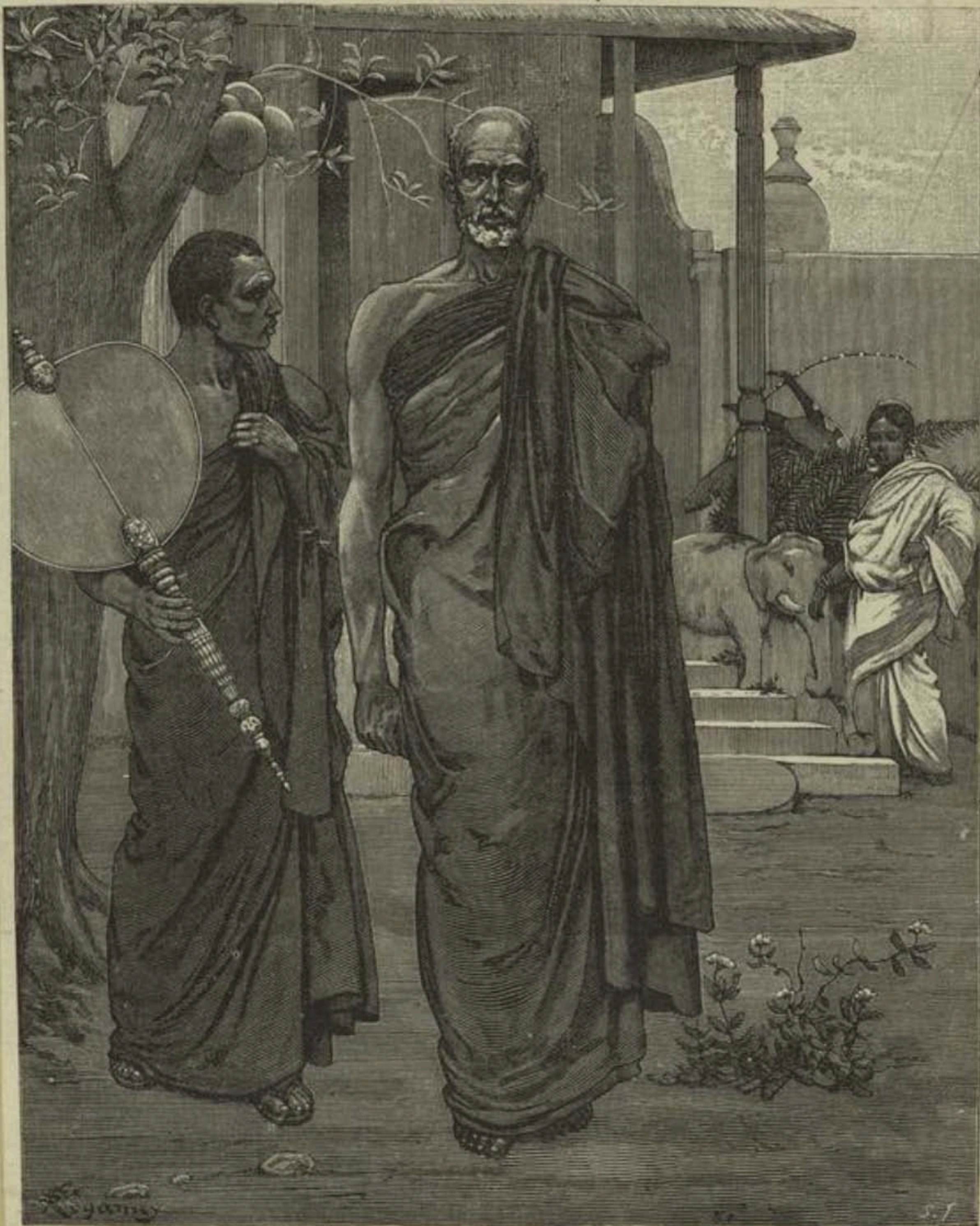


5513-1543
ABU EL HADE. (Malayan.)

Johore, or Djohor, a small State occupying the southern part of the Malay or Malacca Peninsula, and one of the most prosperous in the East, made an independent exhibit at the Columbian Fair which was probably the least important in size among the nations exhibiting. Johore is traversed by a railway and exports much fine timber. It is governed by a Sultan with the title of Maharajah. The present ruler, Maharajah Abubaker, sent the merchant Abu El Hade to manage his exhibit at Chicago, a duty which he performed with marked credit to himself and his illustrious master. On the Midway there was a typical Malayan bungalow, or thatched cottage, constructed of the finest native woods. The floor of this cottage, supported by posts, was raised seven feet above the ground, suggestive of the dangers lurking in Malacca from wild beasts and venomous serpents. In the Agricultural Building was placed a complete exhibit of the products of Johore. The principal exports of the country are timber, rattans and dammar, but the soil and climate are well fitted for the growth of sugar cane, rice, tobacco, and coffee, which



Banian de Mokha.



Costume. - B. - Sri Lanka.

BONZES DE CEYLAN, A COLUMBO¹.

N. Y. PUBLIC LIBRARY
ASTOR LENOX TILDEN FOUNDATION
500 N. 4TH ST. N. Y. N. Y.

Gravure de Smeeton et Tilly, d'après le dessin de F. Régamey.



Caffettiere venditor di Sorbetti?

Costume - R. Tunisian.

11,077
Coffee house keeper selling sherbets
Drawn early 1800s

N. Y. PUBLIC LIBRARY
ASTOR LENOX TILDEN
PICTURE COLLECTION



Cavalier Arabe d'Yemen.



TAKIWI BANDA PANABOKKE,
PRESIDENT OF TRIBUNAL, DUMBERA.

16N Jan 15, 1876
GIRAGAMA, RAYEMAHATMEYA
OF YATIMVERA.

16N
JOHN RICHARD PARANAGAMA, RAYEMAHATMEYA
OF JUMPANE (A CHRISTIAN).

CINGHALESE CHIEFS WAITING FOR THE PRINCE OF WALES AT KANDY, CEYLON.

FROM A SKETCH BY ONE OF OUR SPECIAL ARTISTS.



COURT LIFE OF MADAGASCAR.—QUEEN OF MAHELI AND ATTENDANTS—TYPES.—Drawn by Bida.

4330

N. Y. PUBLIC LIBRARY
PICTURE COLLECTION

Costume - R. Madagascar



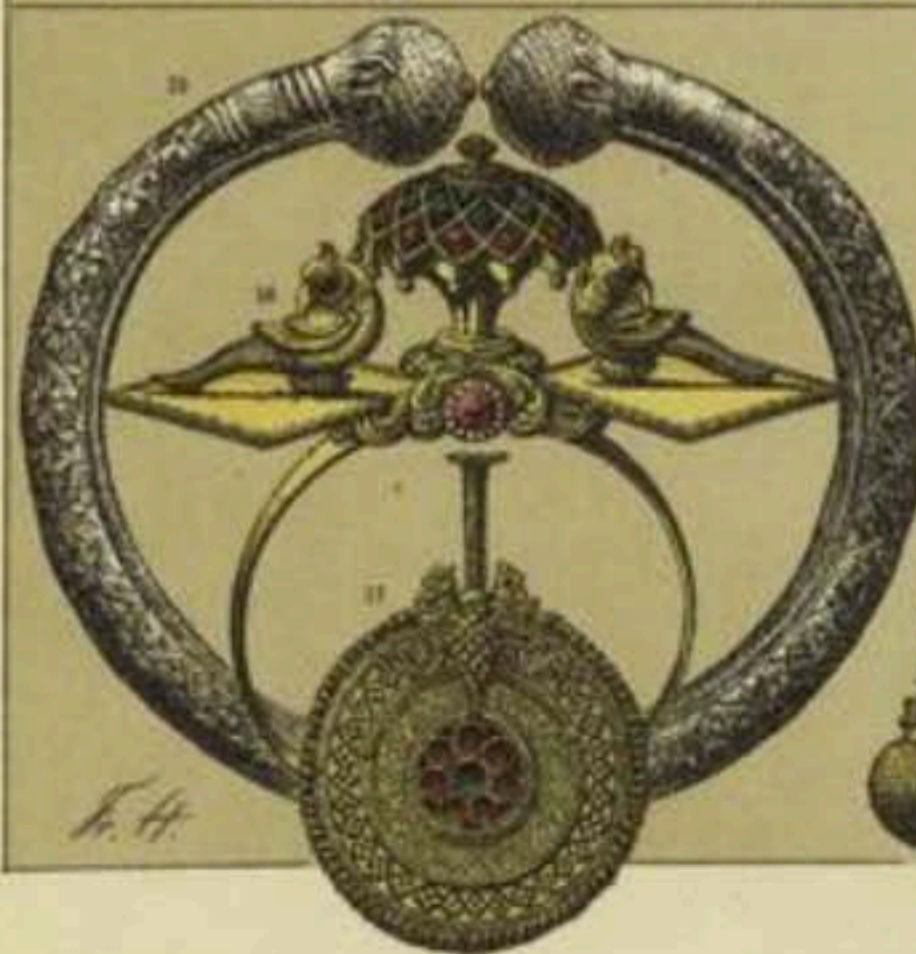
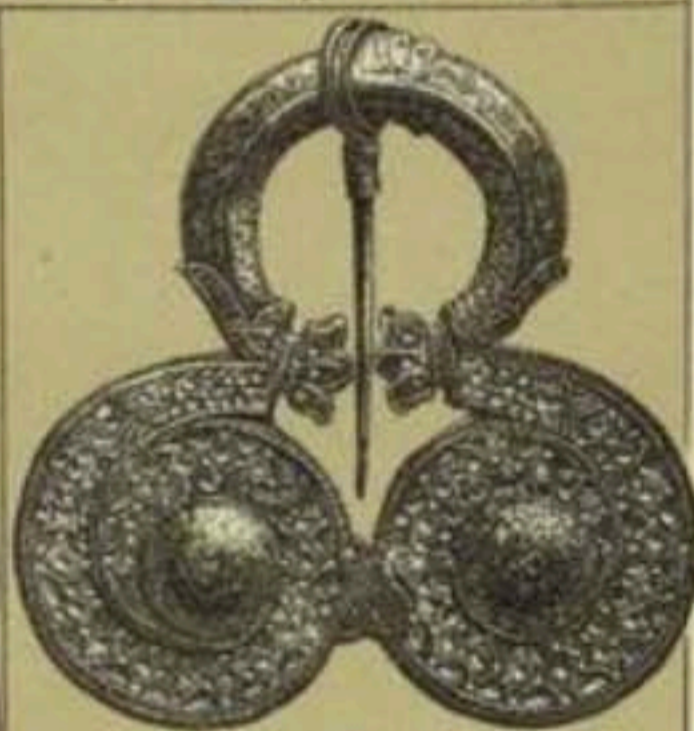
Aut. Bonin del. inc.

DIVERSI ABITI BARBARESCHI

11,077
Natives of Morocco
Early 1800s

U.S. PUBLIC LIBRARY
ASTOR LENOX TILDEN FOUNDATION

Costume R. Moroccan



EDAD MODERNA.—TRAJES DE LOS CINGALESES, Y JOYAS INDIAS

Costume-Reg. Sri Lanka

171415700004) 4.1



Insp. J. Rigo, Lebreton & C^o

FEMME MAURESQUE

(Costume de ville)

MAROC

E. Y. PUBLIC LIBRARY
PICTURE COLLECTION



Generale-Capitano-Gendarme, Guardia Reale &c.

Costume - R. Tunisian

11,077
Military costumes
Tunis
Early 1800s

A. V. PUBLIC LIBRARY
COSTUME COLLECTION



HEROLD VON TIMOR.

*14600 (1845)
Herold, Timor-Island
Malay Archipelago

R. Y. FORD'S
PICTURE COLLECTION

Costume - R. Malayan



Lea. J. J. J. J. J.

Mandarini, &c.

11,077
Mandarins, Thailand
Early 1800s

Costume - R. Thai

M. V. P. P. P. P. P.



Jerrabiatia lith

306 Imp. Firmin Didot, C^o Paris
1887.K. Y. P. LIBRARY
PICTURE COLLECTION

COSTUMES R. TUNISIEN

TUNIS-ALGERIA

- 1- Moorish woman, Tunis.
 2- Arab chief.
 3-4- Beggars.
 5- Porter.
 6- Turkish calvary soldier.
 7- Moorish woman, Algiers.
 8-9-10- Tunis.



Costume - R. Moroccan

TYPE OF MOROCCO,
9 July 1875

N. Y.
RICO.



Fig. 2. — Hommes Bangongo.



Fig. 3 — Femme Bangongo.

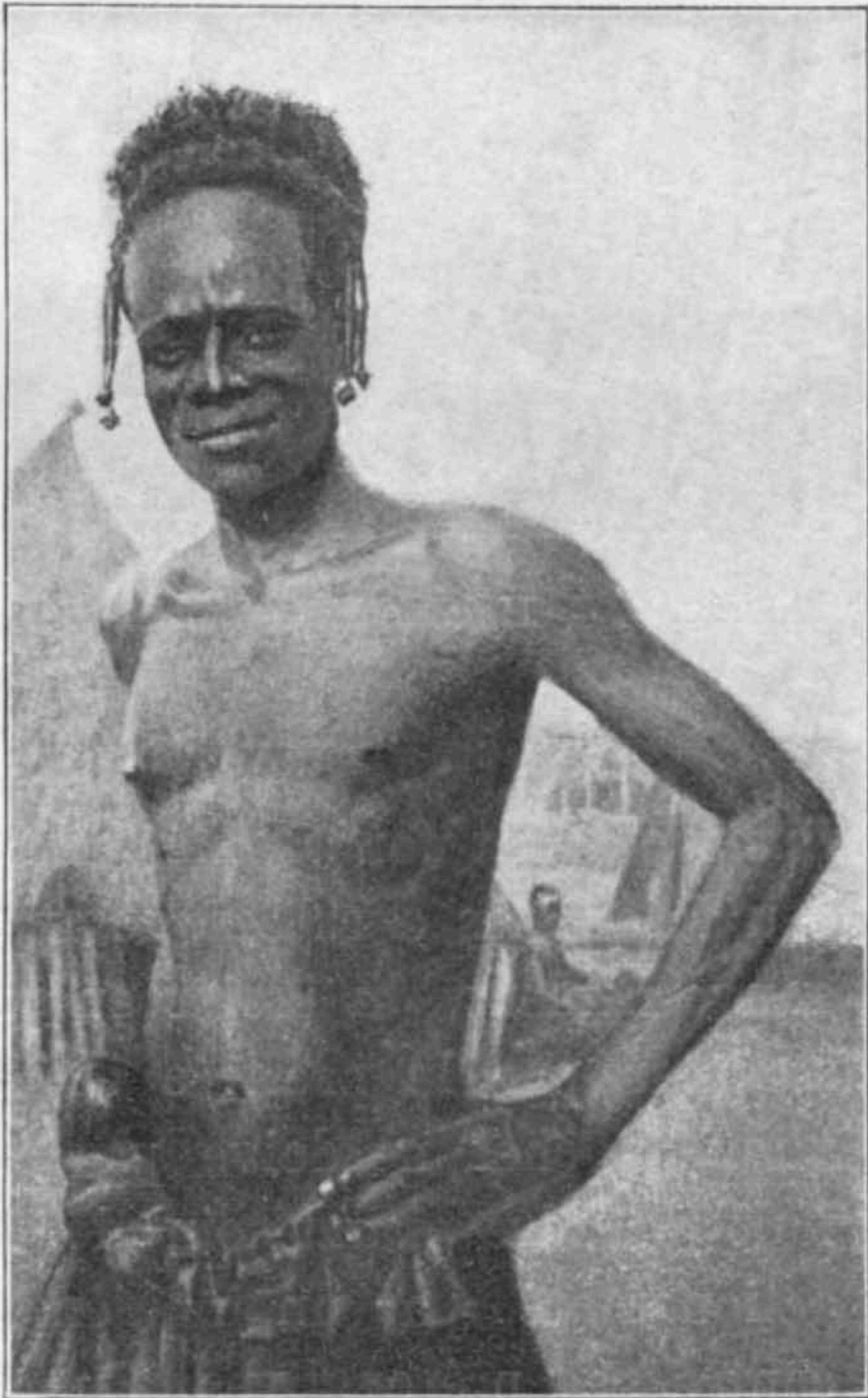


Fig. 5. — Homme Bashilele.

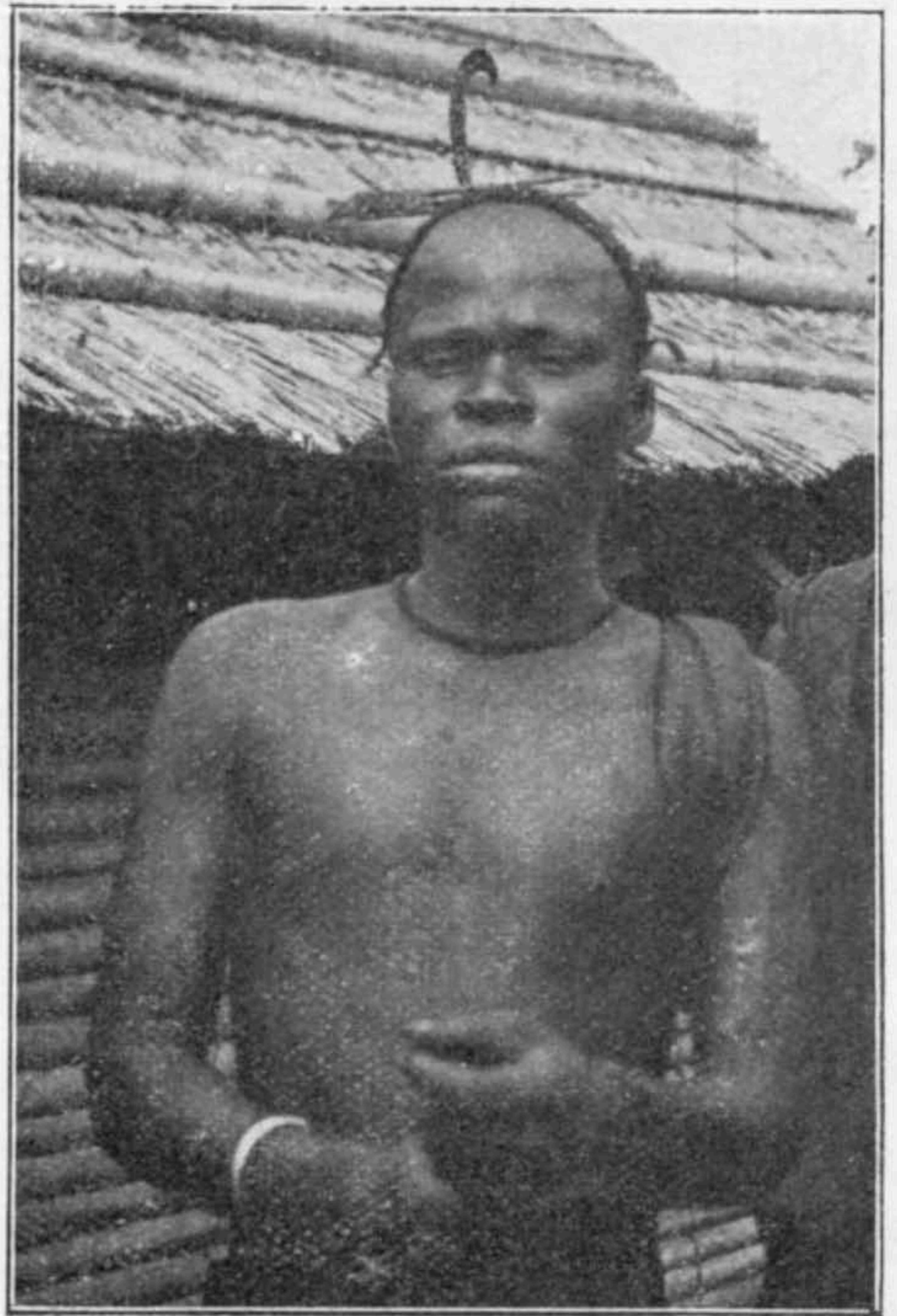


Fig. 6. — Homme Bakongo.



Fig. 8. — Fils du roi
des Bushongo.



Fig. 9. — Homme Bashilele.



Fig. 11. — Masque Mashambo.

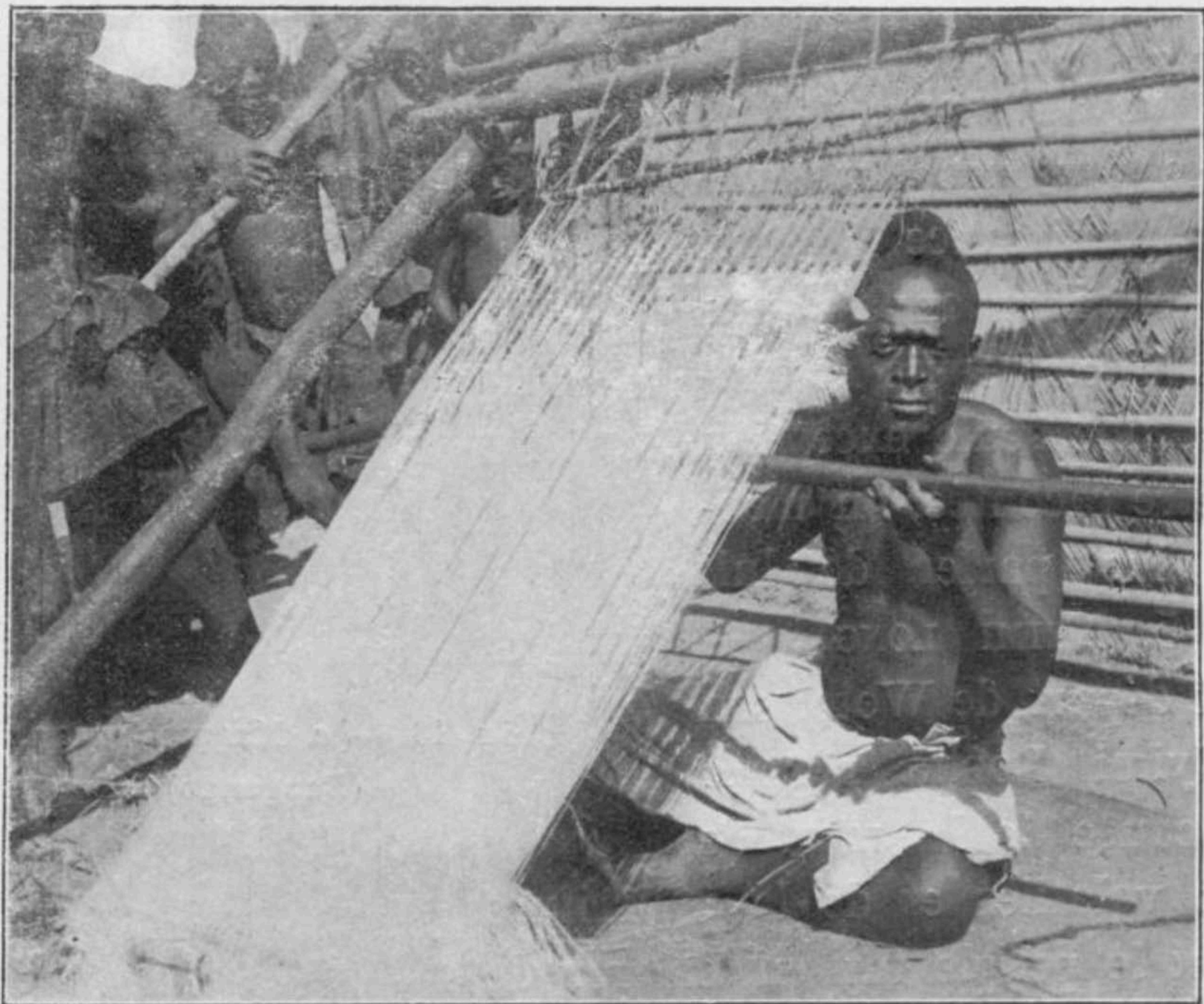


Fig. 14. — Tisserand Bangongo.



Fig. 15. — Couteaux de guerre Hondo.

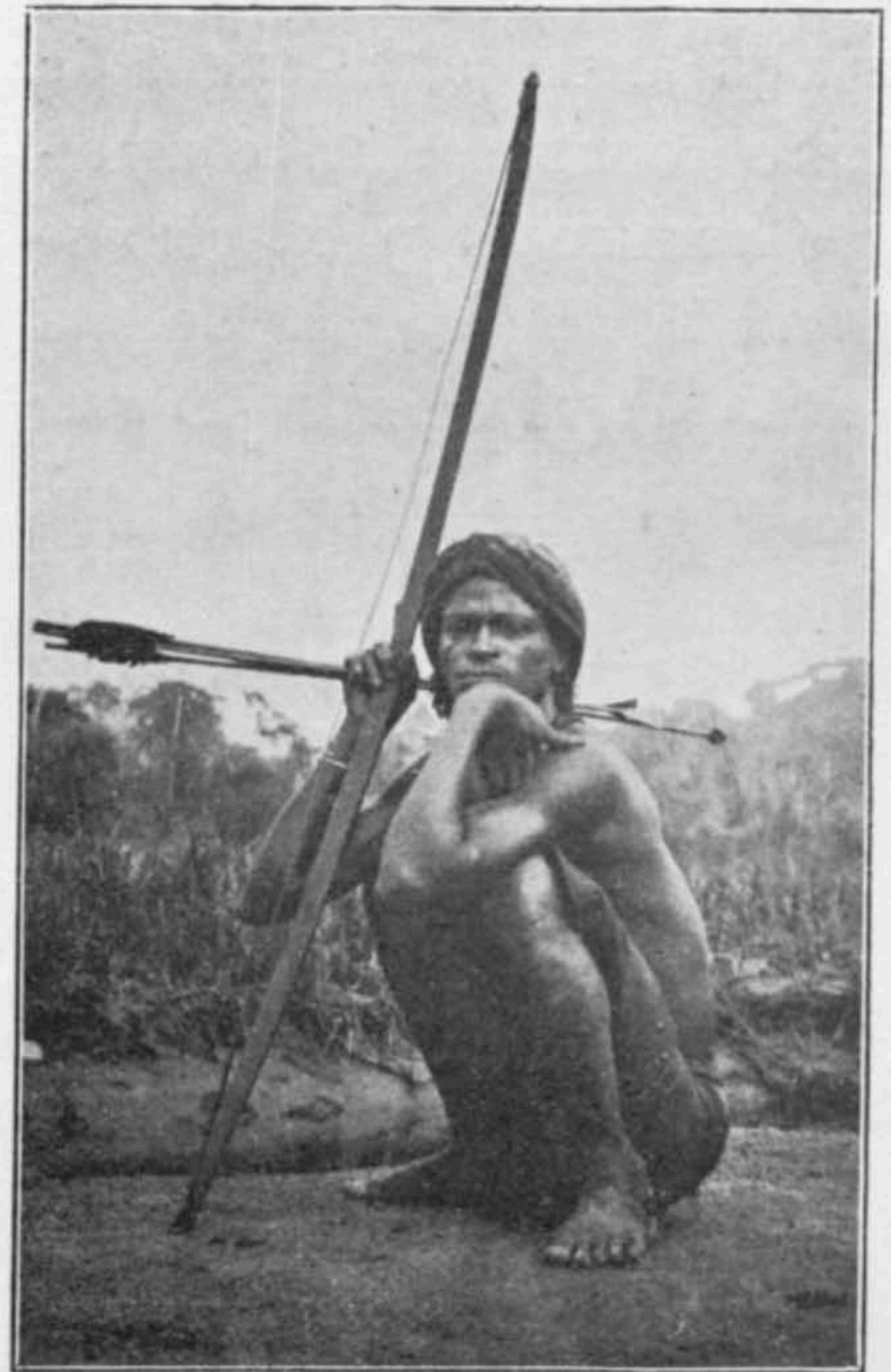


Fig. 16. — Chasseur Bakongo.



Fig. 17. — Guerrier Bakongo.



Fig. 29.
Chef Bakongo.



Fig. 35. — Le Nyimi et sa cour.



Fig. 41. — Le Chikala II
avec la statue de Misha Pelenge Che.



Fig. 42. — Le Sesc Yulu.



Fig. 43. — Le Buimbi (à droite).



Fig. 44. — Le Bambi.



Fig. 46. — Shamba-Shamba,
beau-frère du Nyimi.



Fig. 56. — Chefs Bakongo qui ont permis à l'expédition de traverser la Loange.



Fig. 73. — Bashilele jouant du tambour.



Fig. 74. — Bangongo
exposant son tambour à friction au feu
pour tendre la membrane.



Fig. 75. — Joueur de xylophone.



Fig. 76. — L'arc musical (Bangongo).



Fig. 83. — Danse funéraire.



Fig. 85. — Danse au Mushenge.



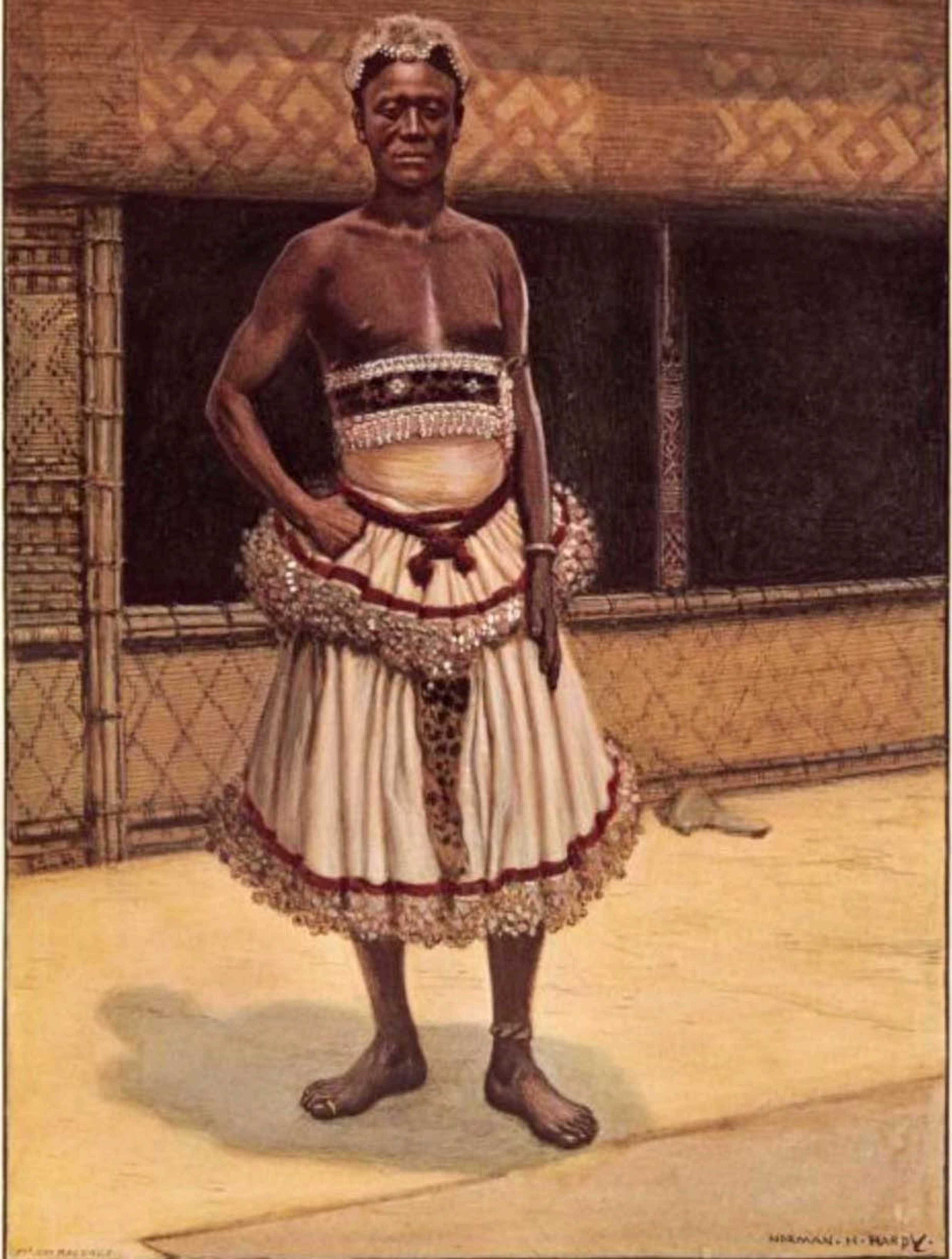
Fig. 84. — Danse funéraire.



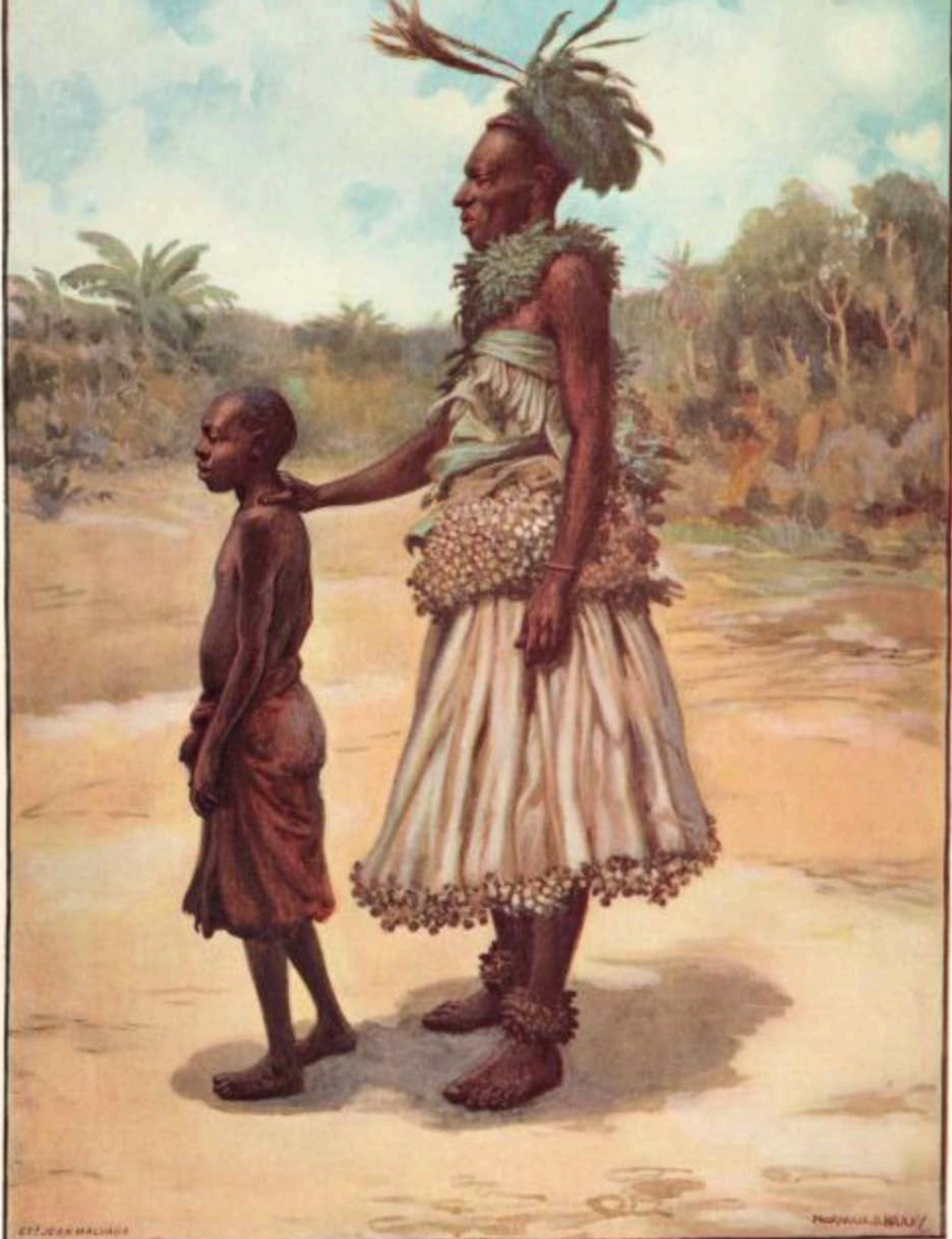
Fig. 86. — Danse au Mushenge.



Fig. 87. — Danse au Mushenge.



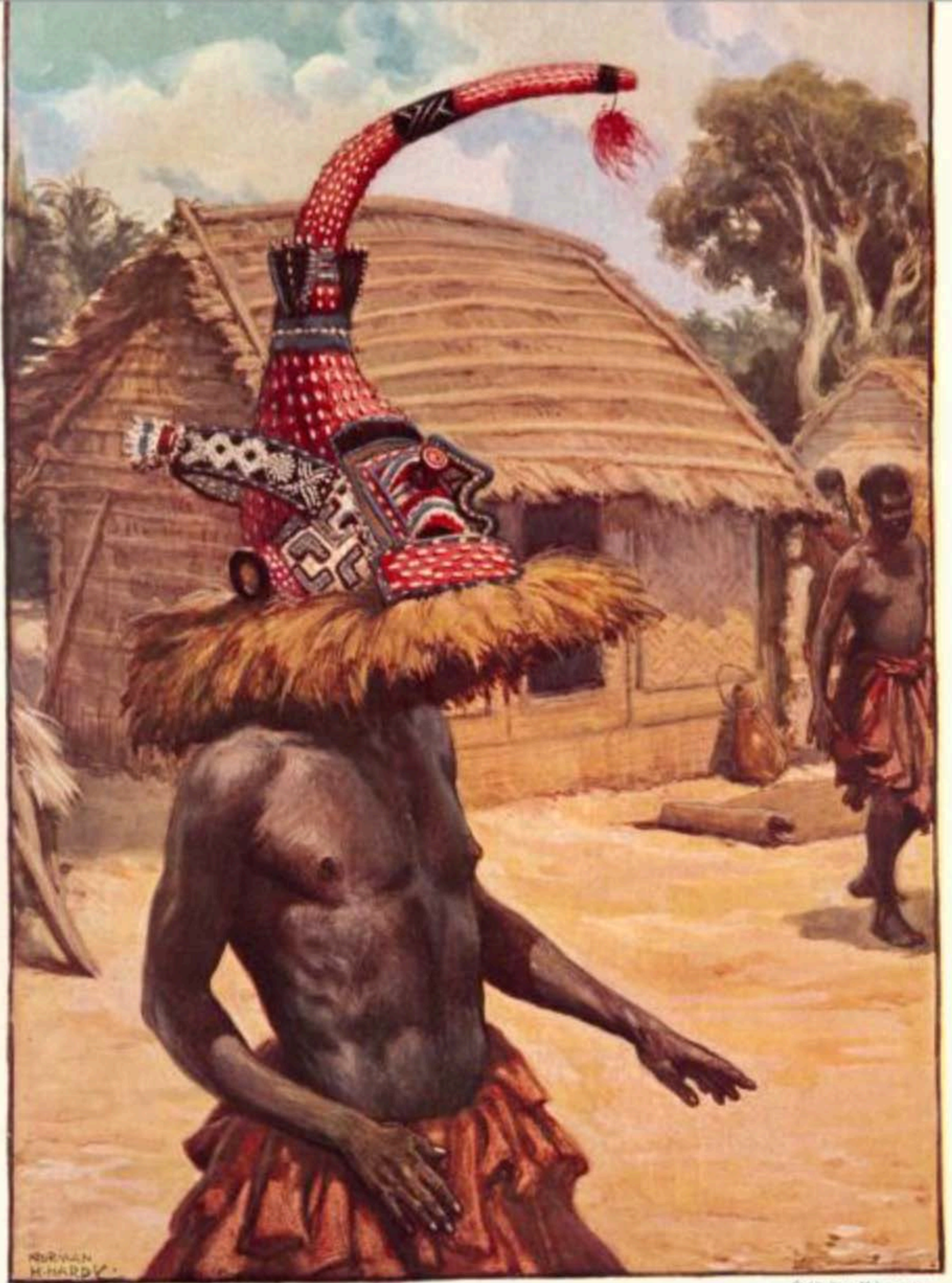
NEWMAN. H. HARDY.





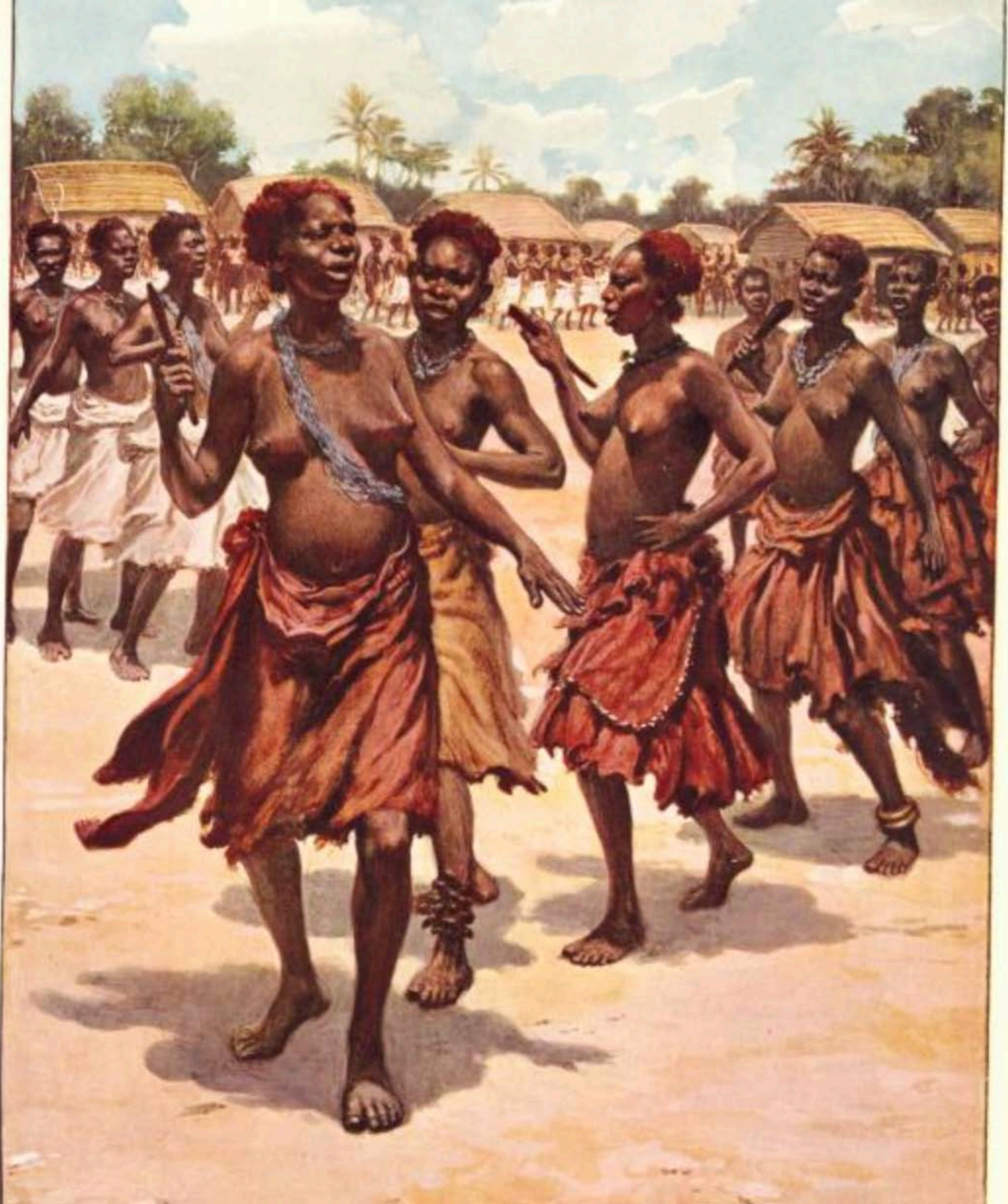
ETC. PALMER

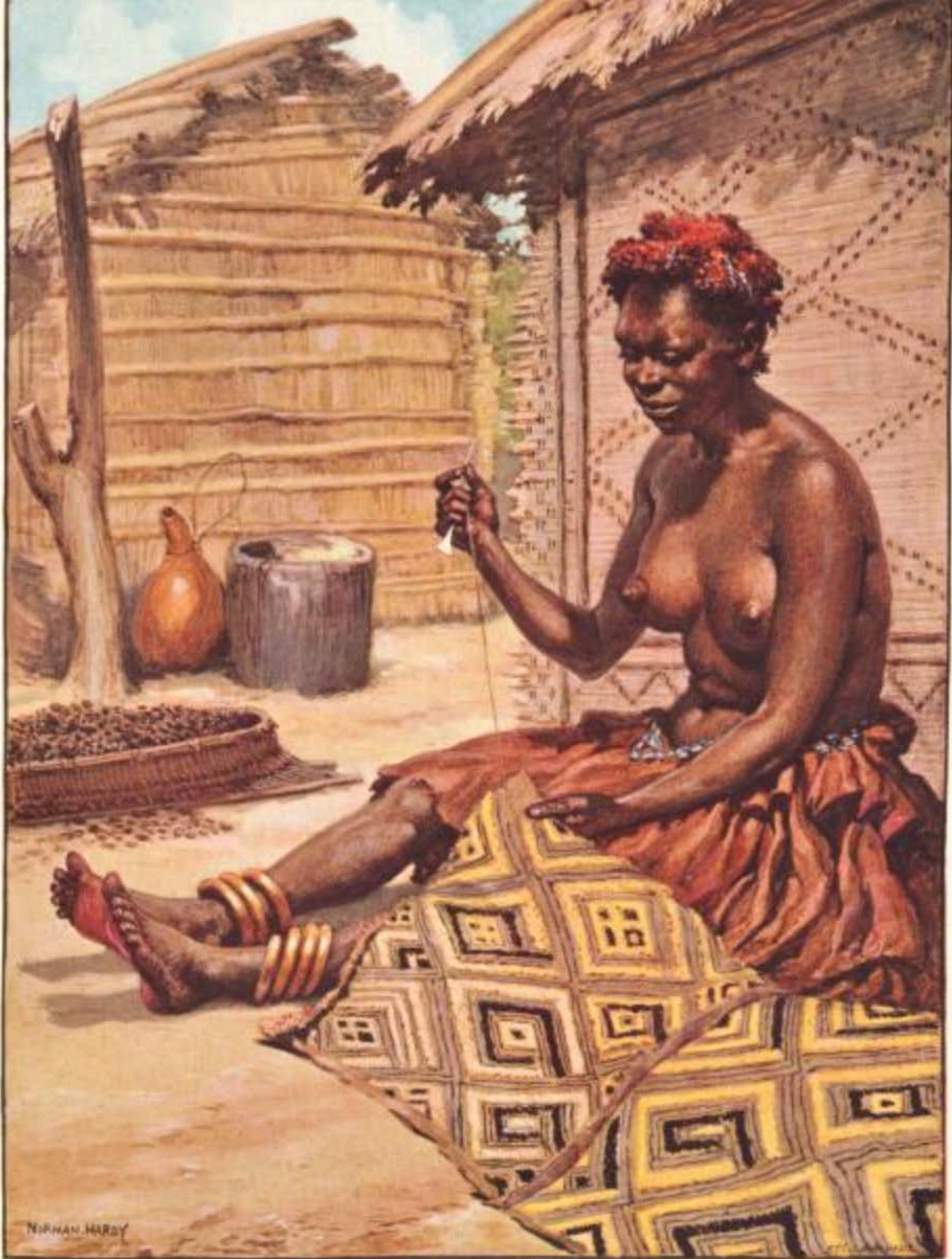
Exhib. Juss. Malacca. 20



John Jay Mahoney, Jr.

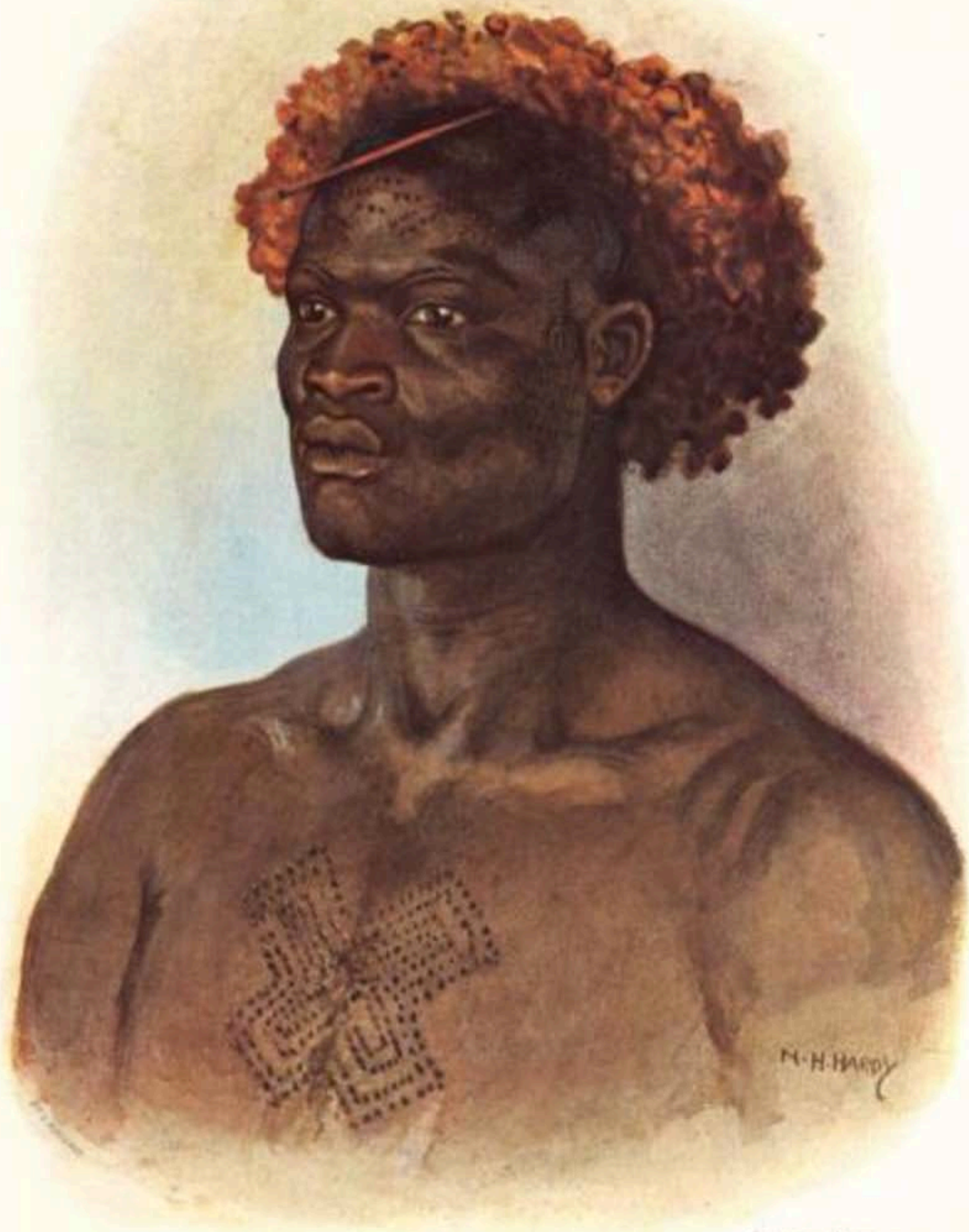






NORMAN HARDY

Health Care Medicine, 10



From New Guinea

UN FORGERON BANGONGO,

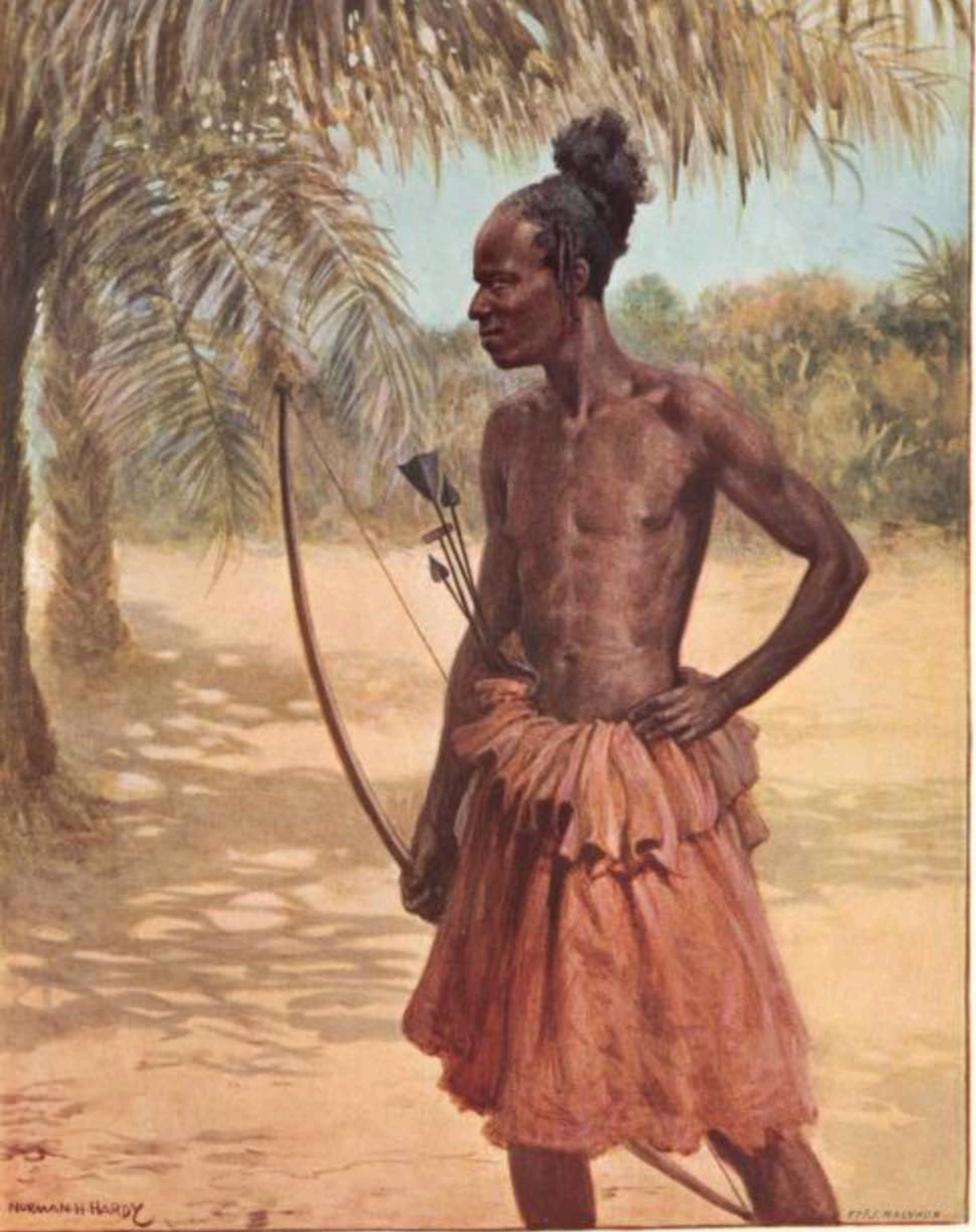




1892

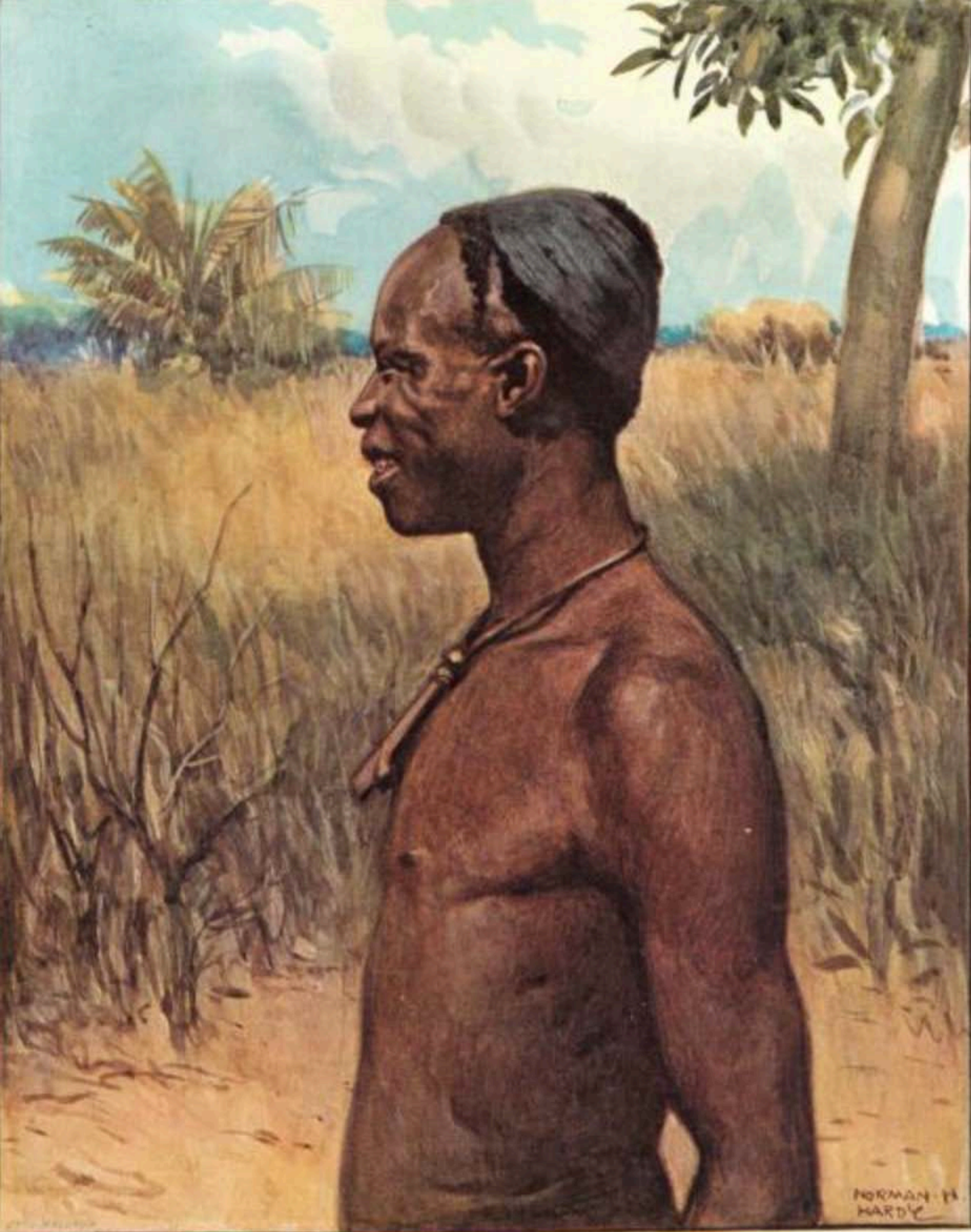
John S. Minton, Jr.

SHIKA.



NORMAN H. HARDY

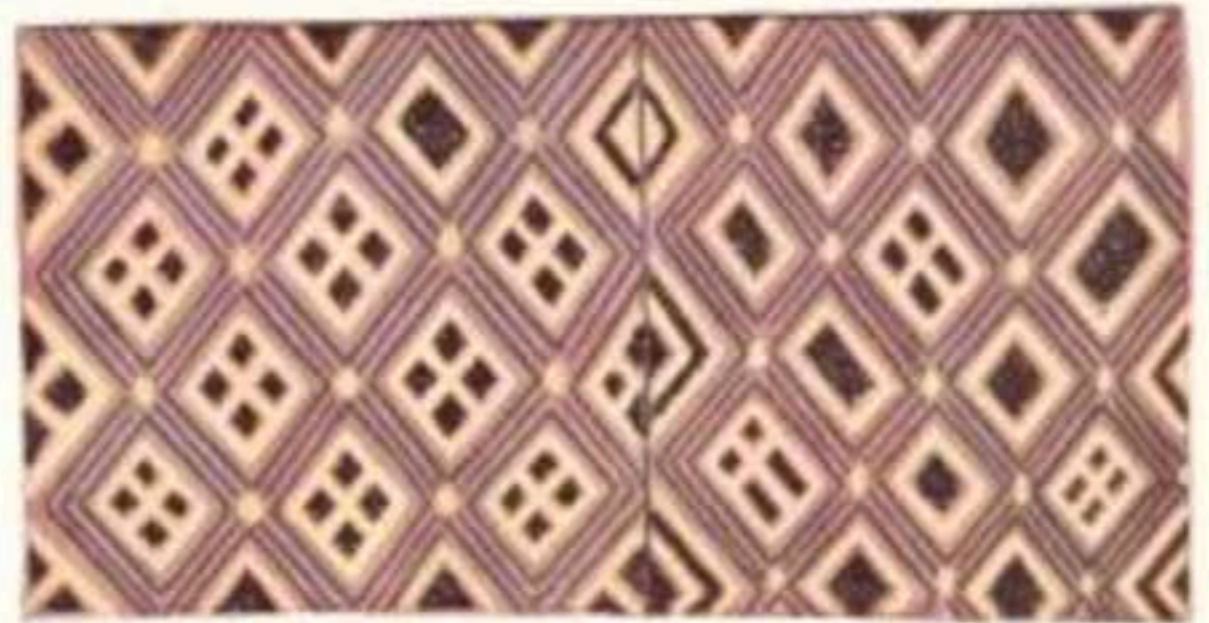
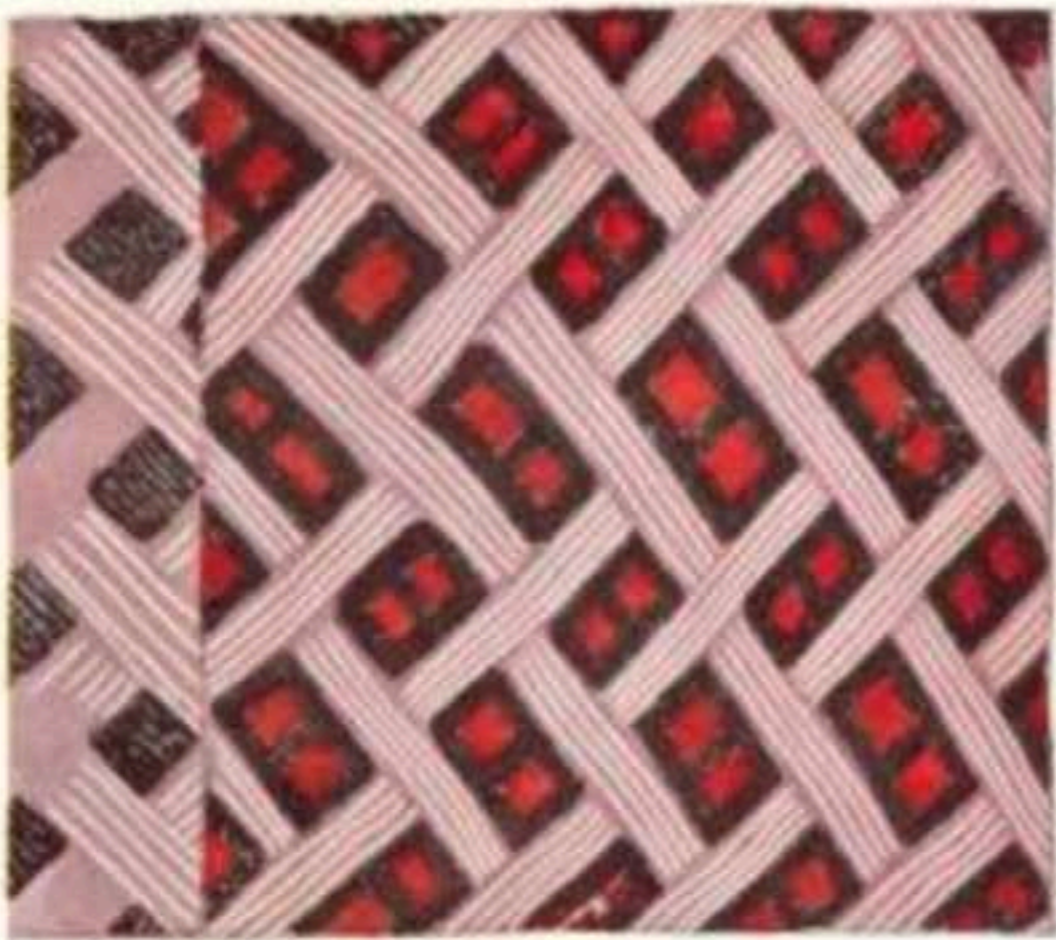
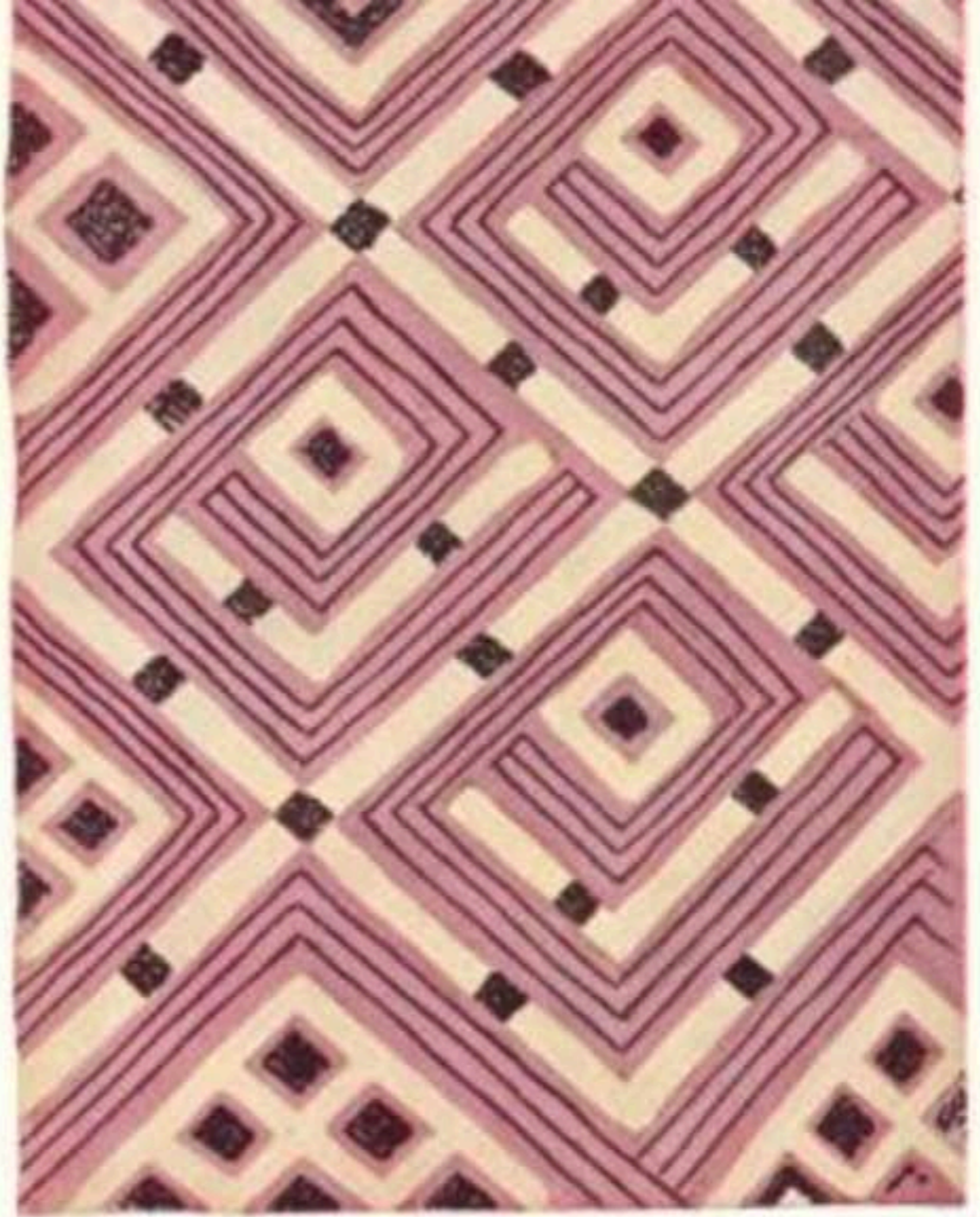
E. L. MALDEN



NORMAN H.
HARDY

Credit: New Museum, NY





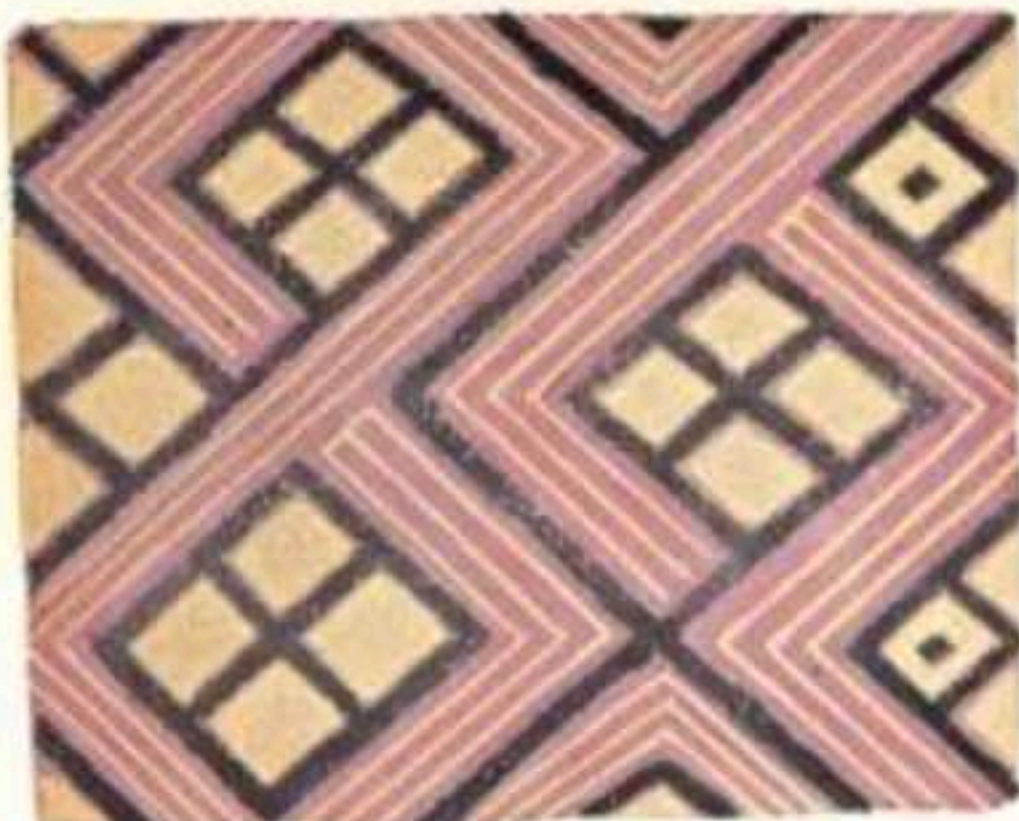
1.



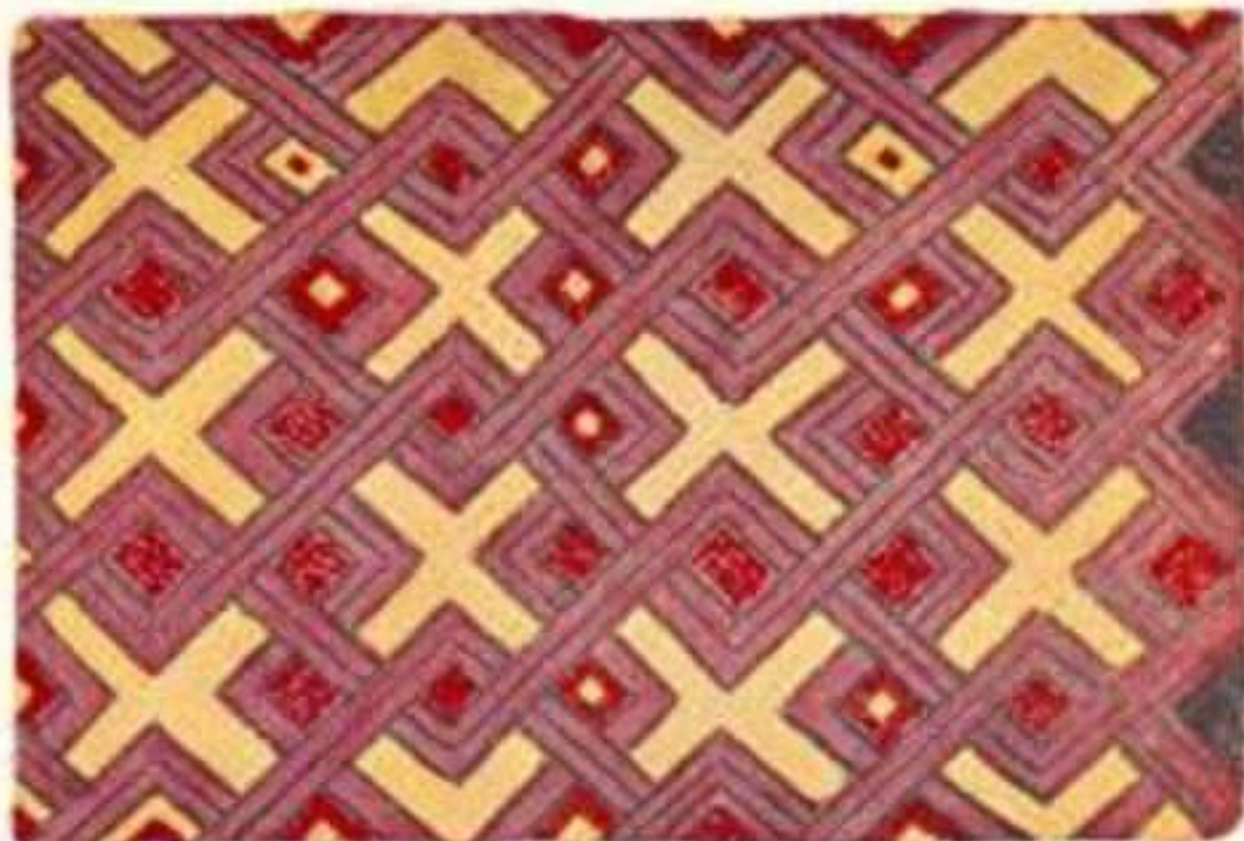
2.



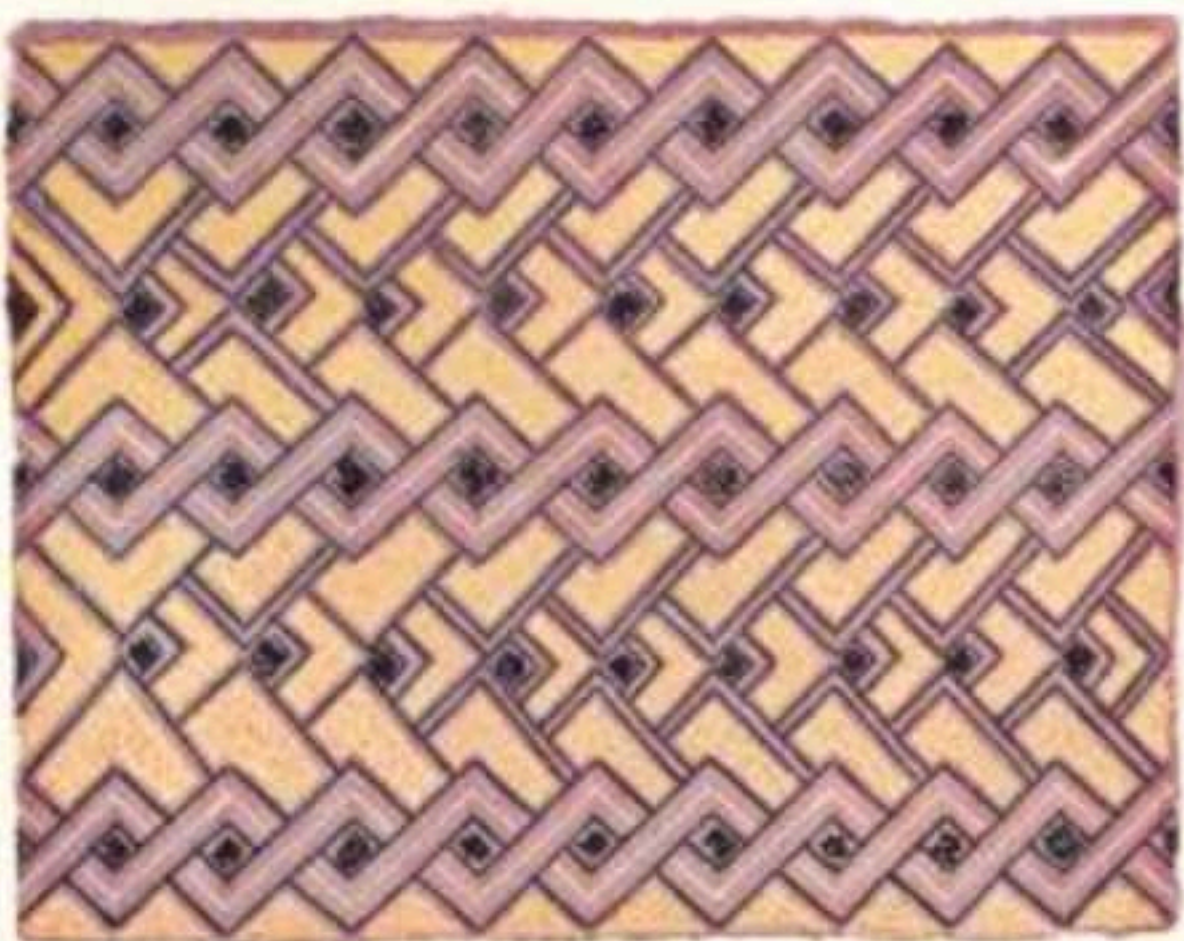
3.



4.



5.



6.



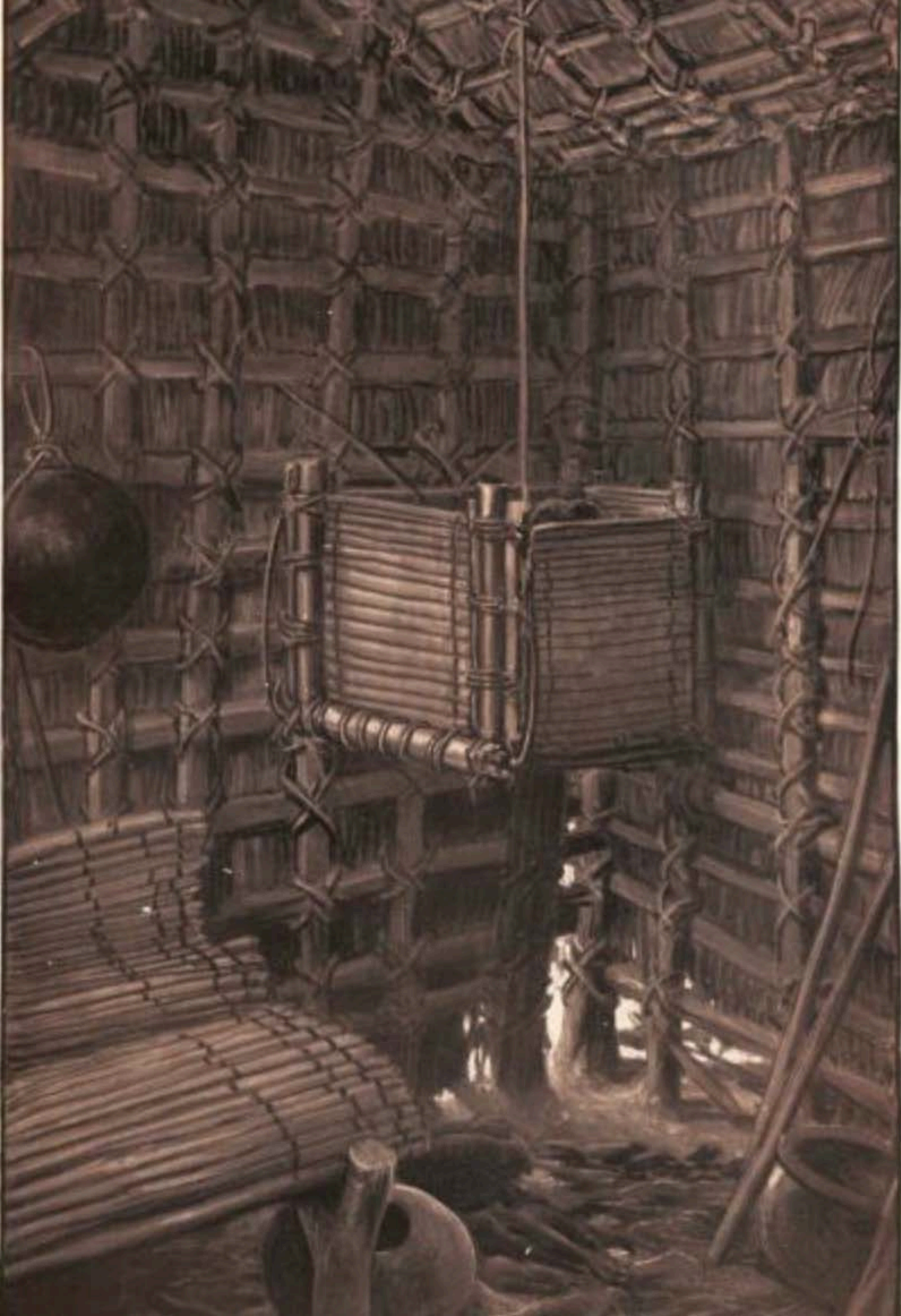
Field San Antonio, v



W. H. R. 1857

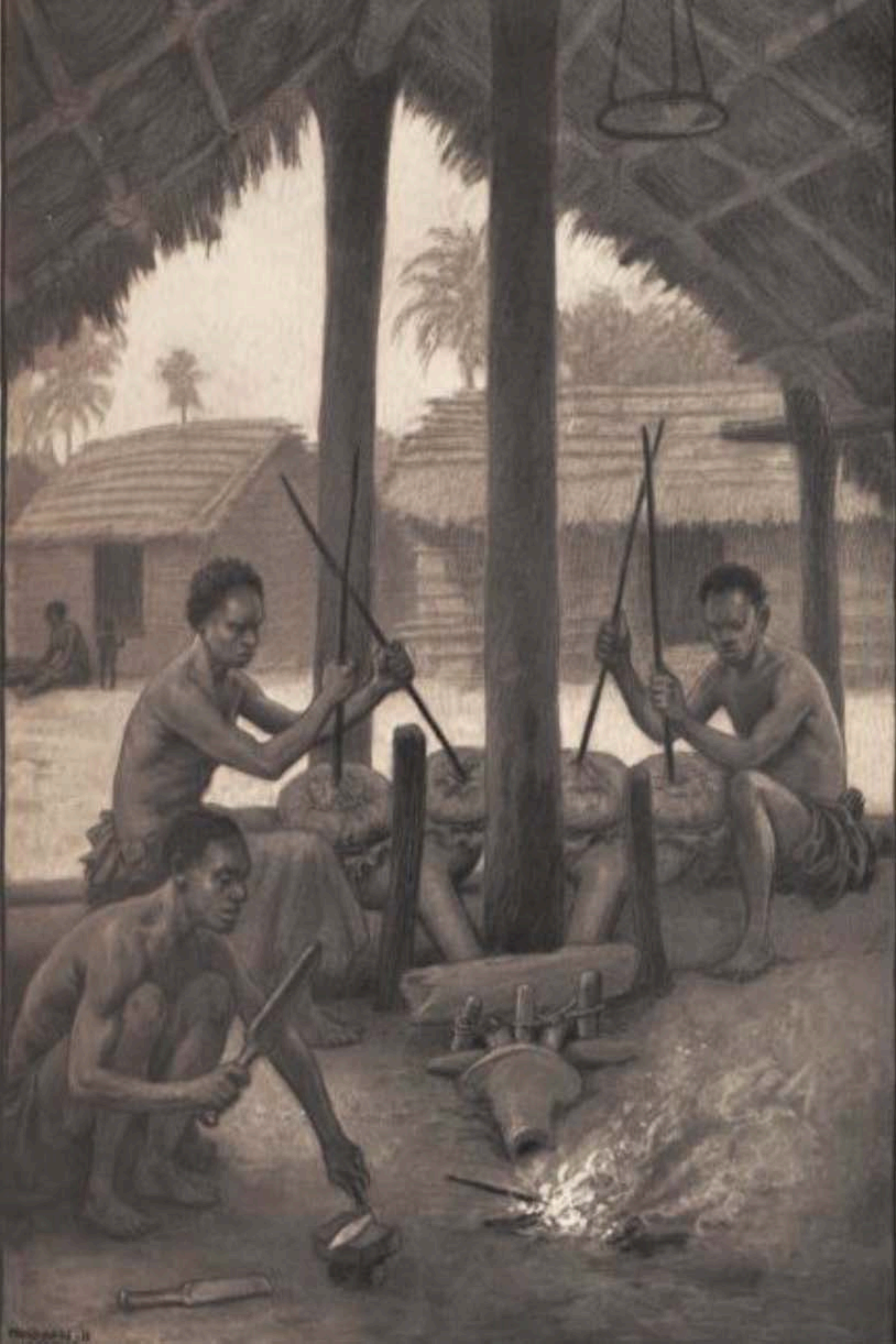


2



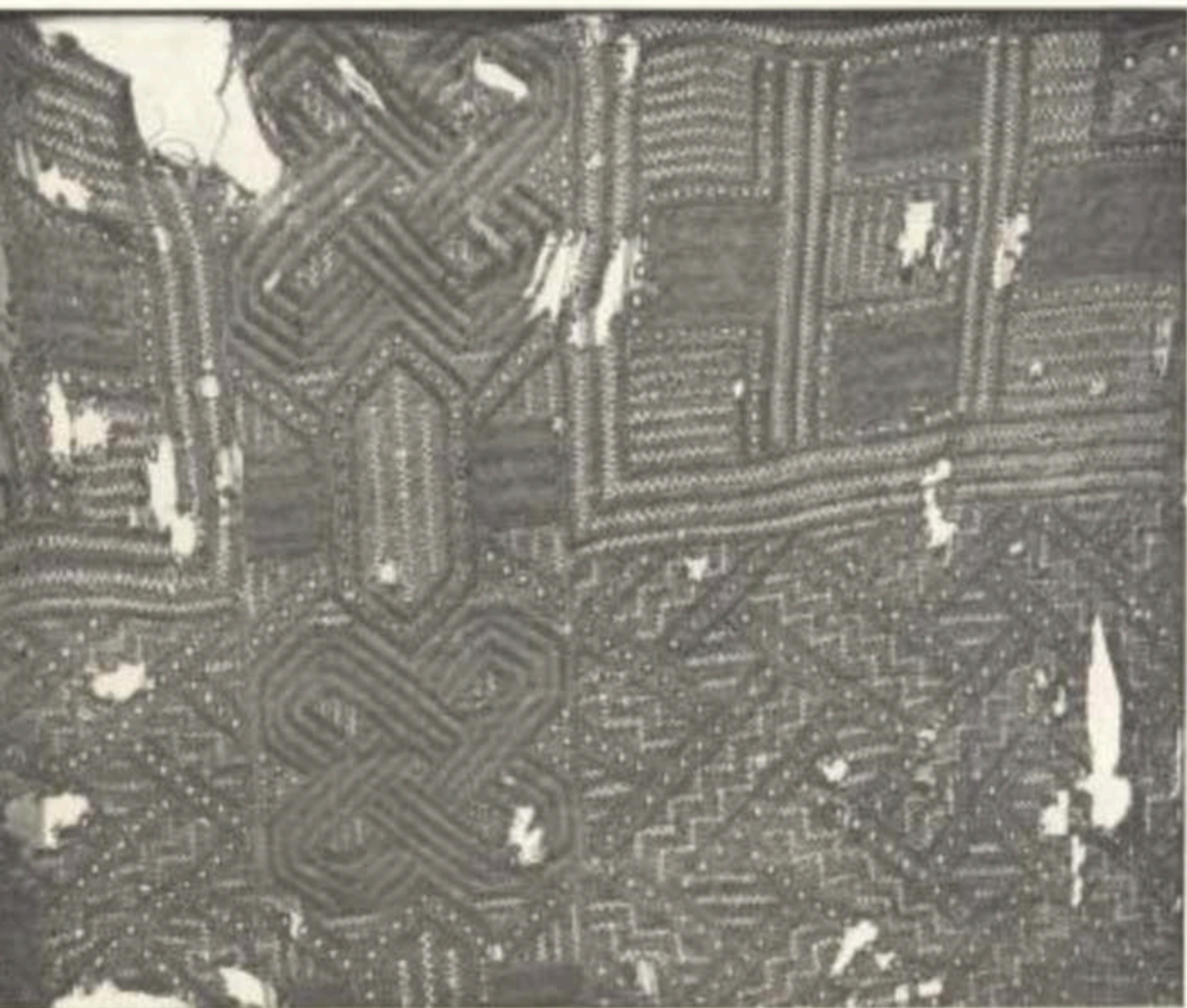


N. H. HARDY





1.





1.



2.



3.





1.

2.

3.

4.

5.

6.



12.

13.

14.

11.