

UNIVERSITY

DESIGNED

1940



ADYTIUM



DENISON UNIVERSITY
GRANVILLE, OHIO

EXCAVATING
DANGER
PROPERTY
DOANE

CHEMISTRY
DOANE LIBRARY

ACE
MADSON

ALDO
DOANE ACADEMY

BARNEY SCIENCE

SOUTH PAVILION

CLEVELAND
HALL

BURG STREET

THRESHER STREET

LOWER CAMPUS

EMERY
BURTON
DOANE SYMPHONY

NEED
ELTON

AOT
MOVING TRUCK

RECREATION HALL
CONSERVATORY

EAST GALLERY
THE HUB

PLUM STREET

CHERRY STREET

BROADWAY
MULBERRY STREET

SUGAR LOAF

SPRING VALLEY

PARSONS
KAZIN

BK







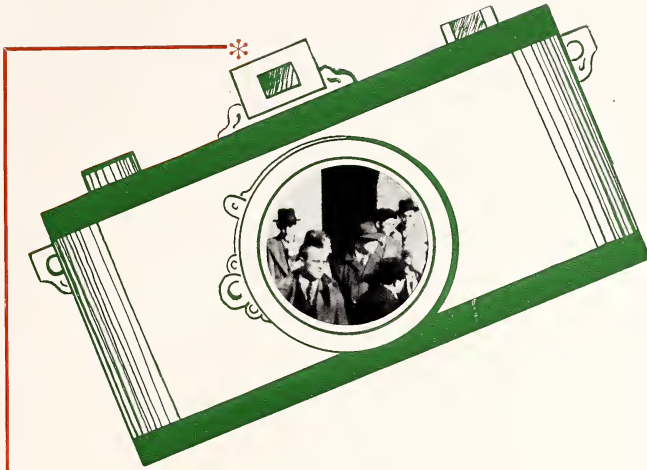
Digitized by the Internet Archive
in 2015

<https://archive.org/details/adytum1940deni>



THE THEME

The candid camera has seized the Denison campus with the same enticing grasp with which it has captured students on other campuses throughout the land. The result has been a constant "shooting" and "re-shooting" of views, people and occasions by faculty members and students alike. In this book we have attempted to bring you the fruits of these hobbies and labors. As a grand climax we offer some shots of scenic beauty from the one-time peaceful Europe which Dr. Shaw, also a camera fan, has consented to let us use.



T H E A D Y T U M



THE **1941** ADY TUM OF



DENISON UNIVERSITY

GRANVILLE
OHIO

CLASS OF
1941
THE JUNIOR
Presents

T H E A D Y T U M

A P I C T O R I A L R E C O R D

O F T H E S C H O O L Y E A R

RALPH SCARRITT . . . EDITOR

JACK MARSHALL . . . BUSINESS MANAGER

C O N T E N T S

S C H O O L

C L A S S E S

A T H L E T I C S

S O C I E T I E S

O R G A N I Z A T I O N S

F E A T U R E S



DEDICATION

The selection of the persons to whom to dedicate the 1940 Adytum was a particularly pleasant and easy task, for two persons stood out above all others in this year.

In these two personages is embodied the spirit of growth that has prevailed throughout the campus for the last thirteen years. In their period of residence here, the service which they have given to the students and the alumni of Denison as well as their devotion to other worthwhile causes has won for them a host of friends.

The erection of Shaw Hall, Lanson Stage Curtis Memorial Hall, William Howard Doane Memorial Library, and the announcement of the gift for the new biological science building are testimonials to the stimulated growth on the campus during Dr. Shaw's years of leadership.

In 1934 the Ohio Baptist Convention chose Dr. Shaw as its leader for that year and the following one. Another example of the ability of this man as an inspirational leader among men.

In the thirteen years of leadership of "the college on the hill" Dr. Shaw has watched over two thousand seniors take their final steps down Swasey's aisle and in the heart of every one of these Denison alumni is a warm place for the president and his wife. Many terms have been given to the Shaws. "Inspiring", "hospitable", "understanding" and others. However, Dr. K. I. Brown has summed up the meaning of Dr. and Mrs. Shaw to us in three words. He has called them "friends of Denison". It seems almost impossible to find a more inclusive phrase.

To you, good "friends of Denison", the Junior Class of 1940 presents this Adytum in the hope that it will provide another satisfying memory of Denison and your many friends.

“FRIENDS OF DENISON”



Dr. and Mrs. A. A. Shaw



Sunday Afternoon

Familiar Landmark





Through the Evergreens



Cleveland Hall



Dean of Freshman Dorms

The Plaza Etched in Snow

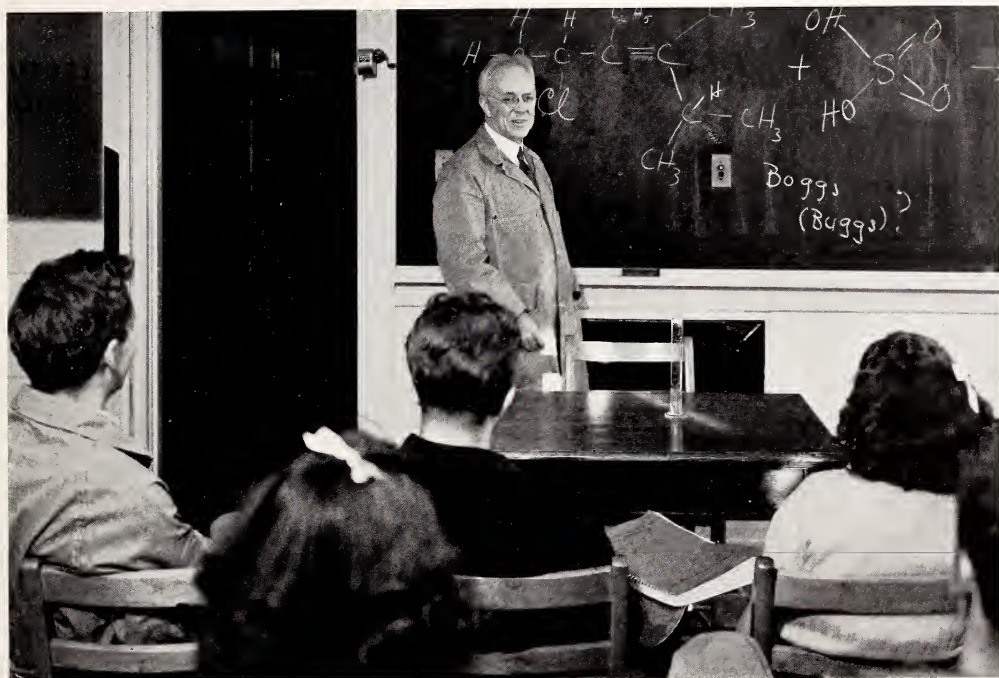




*Shaw
Hall*



*Whistler
Hospital*



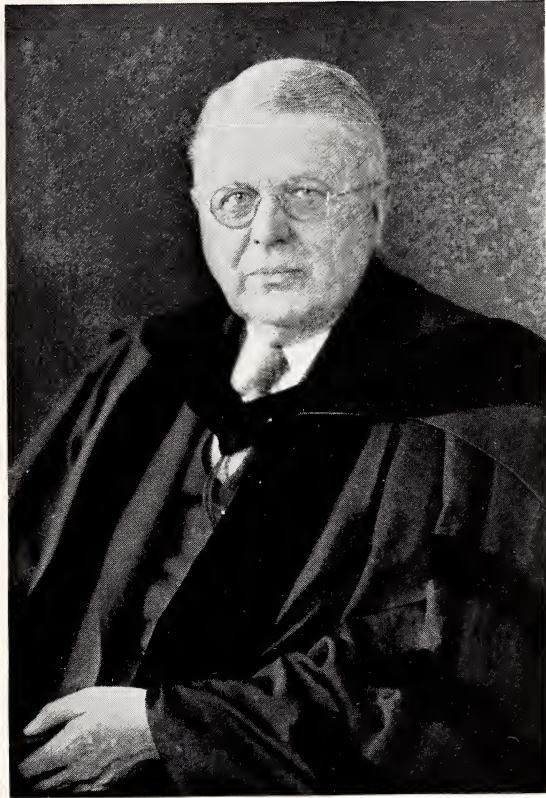
SCHOOL



SCHOOL

administration

faculty



*Dr. Shaw, President
of Denison University*



DEAN OF WOMEN HELEN OLNEY, DEAN OF MEN C. F. RICHARDS

The Deans

GRACE SPACHT

Dean of Freshmen
Women



ALFRED JOHNSON

Business Manager

R. W. WHIDDEN

Dean of Freshmen
Men



DONALD FITCH

Registrar



BURT HODGES

Bursar



ASTRONOMY



FREEMAN MILLER

ART



HORACE KING



ELIZABETH PIERCE

BOTANY



M. E. STICKNEY

CLASSICAL
LANGUAGES



L. R. DEAN



W. C. EBAUGH



W. A. EVERHART

CHEMISTRY

FREEMAN D. MILLER, Associate professor of astronomy and director of Swasey Observatory, B.S., A.M., Ph.D.

HORACE KING, Assistant professor Art, A.B., A.M.

ELIZABETH PIERCE, Assistant in art, A.B.

MALCOLM E. STICKNEY, Professor of Botany, A.B., A.M.

LINDLEY RICHARD DEAN, Eliam E. Barney professor of classical languages, A.B., Ph.D.

WILLIAM CLARENCE EBAUGH, Professor of Chemistry, B.S., Ph.D.

W. ALFRED EVERHART, Associate professor of Chemistry, A.B., M.S., Ph.D.

EDWARD A. WRIGHT, Assistant professor of Speech and Director of Drama, A.B., A.M.

JESSE SKRILETZ, Technical Assistant in Dramatics, A.B.

A. COLLINS LADNER, Assistant professor of Mathematics and Engineering, A.B., A.M.

CLIFFORD S. ADES, Assistant professor of Engineering Science, C.E., M.C.E., D.C.E.

CHARLES L. MAJOR, Assistant professor of Education, A.B., A.M.

MARY LOUISE RALSTON, Instructor in Education, Ph.B., A.M.

E. BASIL HAWES, Professor of Education, Ph.G., B.S., M.S.

DRAMATICS



E. A. WRIGHT



JESSE SKRILETZ

ENGINEERING



A. C. LADNER



C. S. ADES

EDUCATION

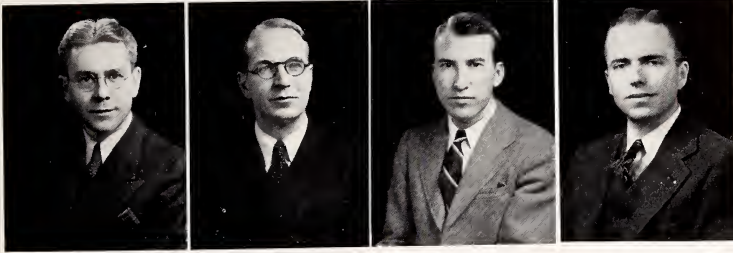
C. L. MAJOR

LOUISE RALSTON

E. B. HAWES



ECONOMICS



L. J. GORDON

H. J. DERMBERG

JOHN TURNBULL

E. C. MORROW

GEOLOGY



F. J. WRIGHT

ENGLISH



L. J. KING

E. J. SHUMAKER

A. M. McNEILL

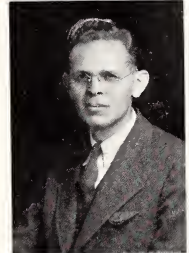


D. MAHOOD

E. SHANNON

R. W. WHIDDEN

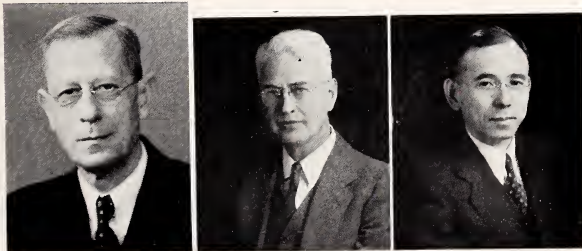
HISTORY AND GOVERNMENT



LELAND J. GORDON, Professor of Economics, B.S., A.M., Ph.D.
 HANS J. DERMBERG, Assistant Professor of Economics, Ph.D.
 JOHN TURNBULL, Instructor in Economics, A.B.
 E. CLARK MORROW, Special Instructor in Economics, A.B., L.L.B.
 JOSEPH L. KING, Lorena Woodrow Burke, Professor of English, A.B., A.M., Ph.D.
 ERI J. SHUMAKER, Associate Professor of English, A.B., A.M., Ph.D.
 ANNIE M. MacNEILL, Associate Professor of English, A.B., A.M.
 DANNER L. MAHOOD, Assistant Professor of English, B.S., M.S.
 ELLENER SHANNON, Assistant Professor of English, A.B., A.M.

R. W. WHIDDEN, Assistant Professor of English, A.B., A.M., Ph.D.
 FRANK J. WRIGHT, Professor of Geology, A.B., A.M., Ph.D.
 WILLIAM T. UTTER, Professor of History and Government, B.S., A.M., Ph.D.
 HARVEY A. DeWEERD, Associate Professor of History and Government, A.B., A.M., Ph.D.
 ALBERT A. RODEN, Assistant Professor of History and Government, A.B. D.Sc.Pol., Ph.D.
 AMES S. PIERCE, Instructor in History and Government, A.B., A.M.
 FORBES B. WILEY, Benjamin Barney Professor of Mathematics, A.B., Ph.D.
 EDSON C. RUPP, Associate Professor of Mathematics, Ph.B., M.S.
 CHOSABURO KATO, Assistant Professor of Mathematics, B.S., M.S., Ph.D.

MATHEMATICS



F. B. WILEY

E. C. RUPP

CHOSABURO KATO

W. T. UTTER
 H. A. DEWEERD
 A. S. RODEN
 A. S. PIERCE

MODERN LANGUAGES



AUGUST ODEBRECHT



A. B. SKINNER



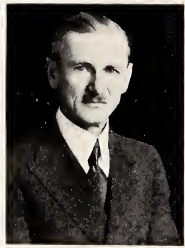
F. D. AMNER



W. M. FELT



ELIZABETH A. KELLOGG



H. J. SKIPP

PHILOSOPHY



F. C. WARD

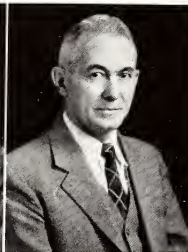


L. W. HATTERSLEY

PSYCHOLOGY



L. C. STECKLE



T. A. LEWIS

PHYSICS



L. E. SMITH



R. H. HOWE

AUGUST ODEBRECHT, Professor of Modern Languages, Ph.G., Ph.B., A.M.

ALMA B. SKINNER, Assistant Professor of Modern Languages, Ph.B., A.M.

F. DEWEY AMNER, Assistant Professor of Modern Languages, A.B., A.M., Ph.D.

WILLIAM N. FELT, Assistant of Modern Languages, A.B., A.M.

ELIZABETH AIRHEART KELLOGG, Special Instructor in Modern Languages, A.B., A.M.

HENRY J. SKIPP, Assistant Professor of Modern Languages, A.B., A.M.

F. CHAMPION WARD, Instructor in Psychology and Philosophy, A.B., M.A., Ph.D.

LINN HATTERSLEY, Professor of Philosophy.

LYNDE C. STECKLE, Assistant Professor of Psychology, A.B., A.M., Ph.D.

THOMAS A. LEWIS, Professor of Psychology, A.B., Ph.D.

LEON E. SMITH, Henry Chisholm Professor of Physics, B.S., Ph.D.

RICHARD H. HOWE, Assistant Professor of Physics, B.S., M.S.

ARTHUR L. HUFF, Instructor in Public School Music, A.B., A.M.

KARL H. ESCHMAN, Professor of Music and Director of the Conservatory, Ph.B., A.M.

KING KELLOGG, Assistant Professor of Music, A.B., B.M., Ph.D.

SUE HAURY, Instructor in Piano.

EMIL BEYER, Instructor in Piano.

MUSIC



A. L. HUFF



K. H. ESCHMAN



KING KELLOGG

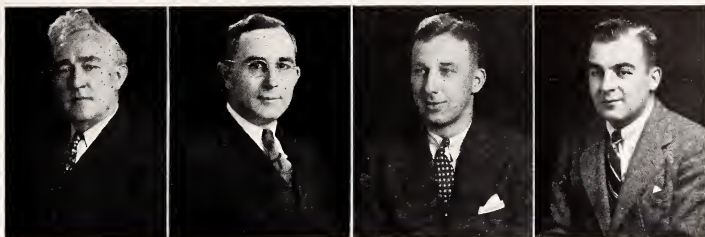


SUE HAURY



EMIL BEYER

MEN'S PHYSICAL EDUCATION



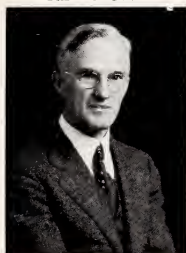
W. J. LIVINGSTON

SIDNEY JENKINS

T. A. ROGERS

C. A. TEMERARIO

RELIGION



F. W. STEWART

SPEECH



L. D. CROCKER

WOMEN'S PHYSICAL EDUCATION



H. I. BADENOCH



S. L. HOUSTON



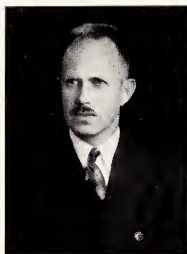
H. A. BARR

SOCIOLOGY

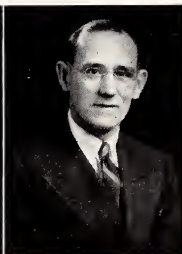


F. D. DETWEILER

ZOOLOGY



A. W. LINDSEY



G. D. MORGAN

WALTER J. LIVINGSTON, Professor of Physical Education, B.S.

SIDNEY JENKINS, Assistant Professor of Physical Education, B.S., A.M.

THOMAS A. ROGERS, Assistant Professor of Physical Education, Ph.B.

C. A. TEMERARIO, Instructor in Physical Education, B.S., M.S.

FREDERICK W. STEWART, Professor of Religion, A.B., A.M., B.D.

LIONEL G. CROCKER, Professor of Speech, A.B., A.M., Ph.D.

HELEN I. BADENOCH, Assistant Professor of Physical Education, Ph.B., A.M.

SARA L. HOUSTON, Instructor of Physical Education, A.B., M.S.

HELEN A. BARR, Professor of Physical Education, A.B., A.M.

FREDERICK G. DETWEILER, Professor of Sociology, A.B., B.D., Ph.D.

ARTHUR WARD LINDSEY, Professor of Zoology, A.B., M.S., Ph.D.

GEORGE D. MORGAN, Associate Professor of Zoology, B.S., M.S., Ph.D.



PUBLICITY AND ALUMNI OFFICE

JIM COX

JOHN BJELKE

MARCENNA MILLER



LIBRARY STAFF

LOIS PEOPLES

MARIAN BABBS

W. C. EVANS

A. N. CRAIGIE

MRS. GEORGE GROGAN

S. V. HOLLINGSWORTH



C L A S S E S



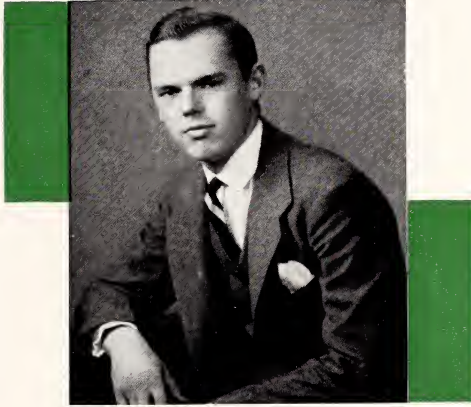
CLASSES

senior

junior

sophomore

freshmen

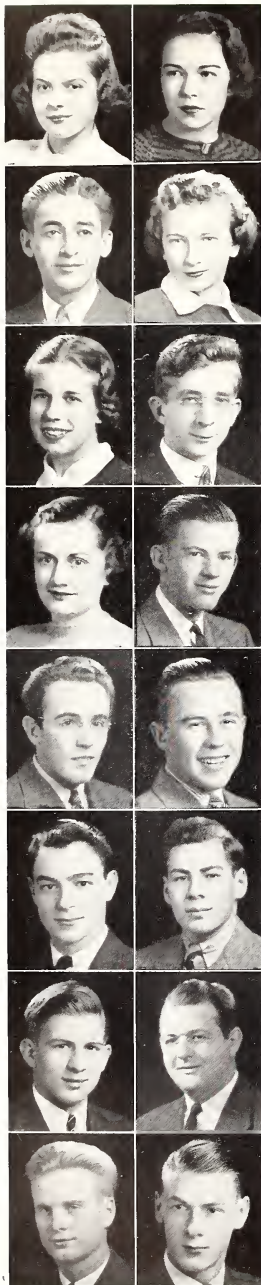


JOHN LINDSTROM, PRESIDENT

Senior Class
of
1940

SENIORS

SENIORS



ADAMS, ERMA: Ohio Wesleyan, 1, 2.

AMMON, JUNE: Alpha Xi Delta; Y. W. C. A., 1, 2, 3, 4; W. A. A., 2, 3, 4; Orchestra, 2, 3; Pan Hellenic Council, 3, 4; President of Alpha Xi Delta, .

AULT, WALLACE, American Commons Club; Y. M. C. A., 1, 2, 3, 4; C. Y. P. U., 1, 2, 3, 4; President, 3, 4; Debate, 1, 2, 3, 4; Cosmopolitan Club, 1, 2; International Relations Club, 4; Band, 1, 2, 3; Blue Key, 2, 3, 4; Tau Kappa Alpha, 4; Varsity Track, 2, 3; Denisonian Staff, 1; Denison Youth Committee Against War, 4.

BAHR, JEANNE: Alpha Omicron Pi; Y. W. C. A., 1, 3, 4; W. A. A., 1, 2, 3, 4; Pan Hellenic Council, 3, 4; Outing Board, 4; Outing Club, 4; German Club, 3, 4.

BAILEY, BERNARD: Lambda Chi Alpha; Franco Collopean, 3, 4; Masquers, 3, 4; University Players, 3; Drum Major, 3, 4; Who's Who in American Universities and Colleges, 4; Omicron Delta Kappa, 4; Executive Committee (Junior Prom), 3.

BARLOW, BETTY MAY: Phi Society; Eta Sigma Phi, 1, 2, 3, 4; Y. W. C. A., 1, 2, 3, 4; Franco Collopean, 4.

BARLOW, MERTON: A. C. C.; Orchestra, 1, 2, 3; Band, 1, 2, 3; Glee Club, 1, 2, 3; Franco Collopean, 2; German Club, 3.

BARTHOLOMEW, JANE: Delta Gamma; Indiana University Extension, 1; Editor, Denisonian, 4; President of Delta Gamma, 3, 4; Y. W. C. A., 2, 3, 4; Pan Hellenic Council, 2, 3; W. S. G. A. Board, 2; W. A. A., 3, 4; Pi Delta Epsilon, 3, 4; Crossed Keys, 3; Mortar Board, 4; Franco Collopean, 2, 3, 4; International Relations Club, 4; Who's Who in American Universities and Colleges, 4; Senior Adviser for Freshmen Women, 4.

BEARDSLEY, CHARLES: Kappa Sigma; Glee Club, 3, 4; Basketball, 1, 2, 3, 4; D' Association, 2, 3, 4; Vice President of M. S. G. A., 4; Class President, 3; Omicron Delta Kappa, 3, 4; President, 4; Inter Fraternity Council, 3; M. S. G. A. Board, 3, 4.

BELLAVIA, ALPHONSE, J.: American Commons Club; Spanish Club, 2, 3; Cosmopolitan Club, 1, 2; Deputation Team, 1, 2; M. S. G. A., 1, 2.

BERSTED, ROGER: Sigma Alpha Epsilon; Adytum, 1, 2; Spanish Club, 1; Track, 1.

BETHUNE, DONALD STIMSON: Phi Gemma Delta; Omicron Delta Kappa, 3, 4; Phi Society; Pi Delta Epsilon, 3, 4; Adytum Staff, 1, 2; Editor, "Portfolio", 4; Staff, "Portfolio", 2, 3, 4; Franco-Collopean, 2, 3, 4; Chemistry Society, 2; Student Leader, Glee Club, 4; Glee Club, 1, 2, 3, 4; Masquers, 1, 2, 3, 4; M. S. G. A. Cabinet, 2, 3; Who's Who in American Colleges and Universities, 4.

BISBEE, CLARK: Sigma Chi; Tennis, 3, 4.

BLACK, JAMES: Kappa Sigma; Denisonian, 1, 2; Adytum Staff, 1, 2; Football, 1; Basketball, 1; Portfolio, 3, 4; Franco Collopean, 3, 4; Masquers, 3, 4; President, 4; Y. M. C. A., 1, 2.

BLACKBURN, ROBERT V.: Beta Theta Pi; Y. M. C. A., 1, 2, 3, 4; Football, 1, 2, 3, 4; Baseball, 1, 2, 3, 4; "D" Association, 2, 3, 4.

BLADE, JOHN: Cheerleader, 1, 2, 3, 4; "D" Association, 2, 3, 4; Tennis, 2, 3, 4; Geology Society, 2, 3, 4.

BLAKE, RICHARD: Sigma Alpha Epsilon; Basketball, 1, 2, 3, 4; "D" Association, 2, 3, 4; Secretary "D" Association, 3, 4; International Relations Club, 2.



SENIORS

BLASDEL, EUGENE: Sigma Chi; Track Trainer; 1; International Relations Club, 4.

BLOCK, ROBERT: Sigma Alpha Epsilon; Football, 1; Spanish Club, 1; Debate, 4; International Relations Club, 2.

BOLIN, MARY ELIZABETH: Chi Omega; Y. W. C. A., 1, 2, 3, 4; W. A. A., 2, 3, 4.

BOTTOMLEY, KATHRYN: Delta Gamma; Western Reserve, 1; Math Club, 3, 4; Y. W. C. A., 2, 4; W. A. A., 3, 4.

BRANT, JOHN: Kappa Sigma; Band, 1, 2, 3, 4; Blue Key, 3, 4; Denisonian, 1, 2; Adytum Staff, 1, 2; Portfolio, 2, 3; Engineering and Physics Society, 1, 2, 3, 4; President, 3, 4; Glee Club, 4; Orchestra, 1, 2, 3; Constitution Committee, 3, 4; Camera Club, 2, 3.

BRAUN, BETTY: Delta Delta Delta; Y. W. C. A., 1.

CAREY, DAVE: Kappa Sigma; Engineering Society, 1, 2, 3, 4; Tennis, 2, 3, 4.

CHAPPELL, DONNA: Y. W. C. A., 1, 2, 3, 4; W. A. A., 1, 2, 3, 4.

COLLANDER, NED: Phi Delta Theta; Masquers, 1; University Players; Forum Club; Orchestra; Y. M. C. A.

COONS, FRANCES: Delta Delta Delta; Y. W. C. A., 1, 2; W. A. A., 1, 2, 3, 4; W. A. A. Board.

CRAWFORD, HOWARD: Sigma Chi; Football, 1, 2, 3, 4; Glee Club, 1.

CURTIS, LAWRENCE: Kappa Sigma; Football, 1; Phi Society; Denisonian, 1, 2; Dramatics, 2, 3; Geological Society, 2, 3.

DAYCH, DONALD: American Commons Club; Chemistry Society, 3, 4.

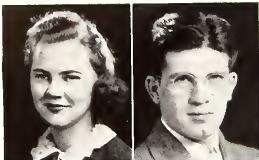
DEAN, FOREST: Kappa Sigma; Glee Club, 3, 4; Chemistry Society, 2, 3, 4.

DEANE, DOROTHY: Y. W. C. A., 1, 2, 4; W. A. A., 1, 2, 3, 4; Math Club, 1; Franco Calliopean, 2, 3, 4; President, 4; Chemistry Club, 2, 3; Portfolio, 4; W. S. G. A. Judiciary, 4.

DEER, GORDON: Lambda Chi Alpha; Band, 1; Orchestra, 4; Football, 1; Y. M. C. A., 1, 2, 3, 4; Cosmopolitan Club, 1, 2; Math Club, 2.



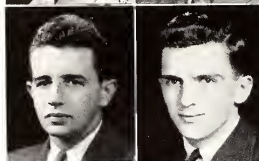
SENIORS



DE BEAUCLAIR, JEANNE: Delta Delta Delta; Y. W. C. A., 1, 2; W. S. G. A. Cabinet, 3, 4; Chairman of Judiciary, 4; Who's Who in American Colleges and Universities, 4; Crossed Keys, 3; President, 3; Mortar Board, 4; W. A. A., 1, 2; Board of House Presidents, 1; Chemistry Society, 3; International Relations Club, 4; Pan Hellenic Council, 4; President of Delta Delta Delta, 4; Spanish Club.



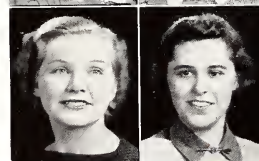
DICKSON, JOSEPH: American Commons Club; Y. W. C. A., 1, 2, 3, 4; "D" Association, 2, 3, 4; Varsity Track, 2, 3, 4; Interfraternity Council, 3; Blue Key, 3, 4; M. S. G. A. Cabinet, 4; Cosmopolitan Club, 1, 2; Debate, 1, 4; Who's Who in American Universities and Colleges, 4; Student Pastor, 2, 3, 4.



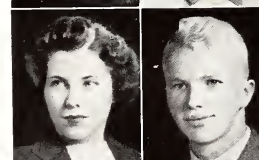
DI DOMENICA, EDNA: Chi Omega; Y. W. C. A., 1, 2, 3, 4; W. C. A. Cabinet, 1; Orchestra, 1, 2, 3; Cosmopolitan Club, 1; International Relations Club, 4; Junior Prom Committee, 3; President of Chi Omega, 4.



DIXON, RICHARD: Beta Theta Pi; Freshman Football Trainer; Y. M. C. A., 3, 4; Debating Team, 2, 3, 4; International Relations Club, 4; Tau Kappa Alpha, 4.



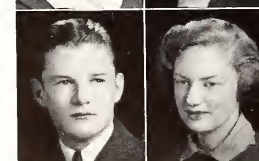
DUFFEY, DONALD BLINN: Phi Gamma Delta, President; "D" Association, 3, 4; Varsity "D", Baseball, 3; Football, 1; Interfraternity Council, 3, 4.



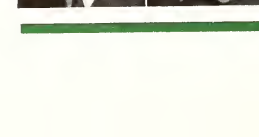
ELLIOT, JESSE SILER, JR.: Phi Gamma Delta; Football, 1; Basketball, 1; Varsity "D" Basketball, 2, 3, 4; "D" Association, 2, 3, 4.



ESCHMAN, BARBARA: Delta Delta Delta; Glee Club, 1, 2, 3, 4; Y. W. C. A. Cabinet, 1; Delta Omicron, 1, 2, 3, 4; Crossed Keys, 3; W. S. G. A. Cabinet; President of Y. W. C. A., 4; Y. W. C. A., 1, 2, 3, 4; Mortar Board, 4; Who's Who in American Universities and Colleges, 4; Constitution Committee, 4; Secretary of Class, 1; W. A. A., 1, 2; Denison String Quartette.



EVANS, HELEN: Alpha Omicron Pi; Y. W. C. A., 1, 2, 3; W. A. A., 1, 2, 3, 4; Masquers, 3, 4; Tau Kappa Alpha, 3, 4; Debate, 1, 3, 4.



EVENSEN, ELINOR: Alpha Xi Delta; Y. W. C. A., 1, 2, 3; W. A. A., 1, 2, 3; Class Officer, 2; Outing Board, 3; Phi Society; Math Club, 1.

EWART, ALISON: Alpha Phi; New York University, 1; W. A. A., 2, 3, 4; W. A. A. Board, 4; Y. W. C. A., 2, 3, 4; Y. W. C. A. Cabinet, 3, 4; Denisonian, 3, 4; Advutn Staff, 2; Franco Galliopean, 3, 4; University Players, 3, 4.

FRANKE, RUTH: Alpha Phi; Flora Stone Mather, 1, 2; Advutn, 3; Y. W. C. A., 3, 4; Y. W. C. A. Cabinet, 4.

FROST, WILBUR: Kappa Sigma; Math Club; Freshman Track; Varsity Track, 2, 3, 4; "D" Association, 3, 4.

GALLOWAY, REBECCA: Kappa Kappa Gamma; Delta Omicron, 2; Treasurer, 3; Vice-President, 4; Y. W. C. A. Vice-President, 1; Freshman Adviser, 2, 3; Vice-President, 4; W. A. A., 1, 2; W. A. A. Board, 3; Treasurer, 4; Women's Board of Athletics, 4; Sophomore Representative W. S. G. A. Board, 2; Judiciary Board, 3; House President, 2; Orchestis, 2; Advutn, 1, 2, 3; Crossed Keys, 3; Freshmen Adviser, 4.

GOODWIN, AGNES: Kappa Kappa Gamma; Oberlin College, 1, 2; Glee Club, 3; Chapel Choir, 3.

GORDON, JOSEPH: Sigma Alpha Epsilon; Football, 1; Basketball, 1, 2, 3, 4; Basketball Captain, 4; President, Sigma Alpha Epsilon, 4; Vice-President S. A. E., 3; Interfrat Council, 2, 3; Blue Key, 3, 4; O. D. K., 3, 4; M. S. G. A. President, 4; International Relations Club, 2; Spanish Club, 1; Who's Who, 4; "D" Association, 2, 3, 4.

GREGG, MARY JANE: Alpha Phi; Transfer from Stevens College, 1; Y. W. C. A., 2; Glee Club, 2, 3.



SENIORS



HANNA, AMES; Kappa Sigma; Football, 1, 2, 3, 4; Track, 1, 2, 3, 4; Band, 1; Forum Club, 2; Y. M. C. A., 2, 3.

HARRISON, CHARLES; Sigma Alpha Epsilon; Ohio Wesleyan, 1; International Relations Club, 4; Varsity Track, 2, 3.

HARTLEY, DURWOOD; Beta Kappa; Glee Club, 4; Chapel Choir, 3, 4; Y. M. C. A., 3, 4; Masquers, 4; University Players, 3, 4; Chorus, 3.

HASSARD, WILLIAM HENRY JR.; Phi Gamma Delta; Adytum Staff, 3; Denisonian, 3, 4.

HITE, WILLIAM; Phi Mu Alpha, 1, 2, 3, 4; Band, 1, 2, 3; Student Conductor, 4; Orchestra, 1, 2, 3, 4; Trans-Atlantic D. U. Collegians Dance Band, 1, 2.

HOMCHIS, SUE; Chi Omega; Alban College, 1, 2; Y. W. C. A., 3, 4.

HOUGH, NORMAN GRANVILLE JR.; Beta Theta Pi; University of Michigan, 1; Football, 2; Denisonian, 2, 3, 4; Pi Delta Epsilon, 3; President, 4; Glee Club, 2, 3, 4; Debating, 3, 4; Tau Kappa Alpha, 4.

HUDSON, ARCHIE; American Commons Club, Y. M. C. A., 1, 2, 3, 4; Cosmopolitan Club, 1, 2, 3; International Relations Club, 4; President of A. C. C., 4; Interfraternity Council, 4; President, 4; Debate, 4; Math Club, 1.

HULLIGAN, BETTY; Delta Delta Delta; Y. W. C. A., 1, 2, 3, 4; W. A. A., 3, 4.

INNIS, CHARLES; Beta Kappa; Geological Society, 1, 2, 3; Secretary, 4.

JACOB, MILDRED; Chi Omega; Y. W. C. A.; 1, 2, 4; W. A. A., 1, 2, 4; Glee Club, 1, 2, 4; Math Club, 1, 2, 4; Language Union, 1, 2, 4; House President, 4; Attended Rochester, 3.

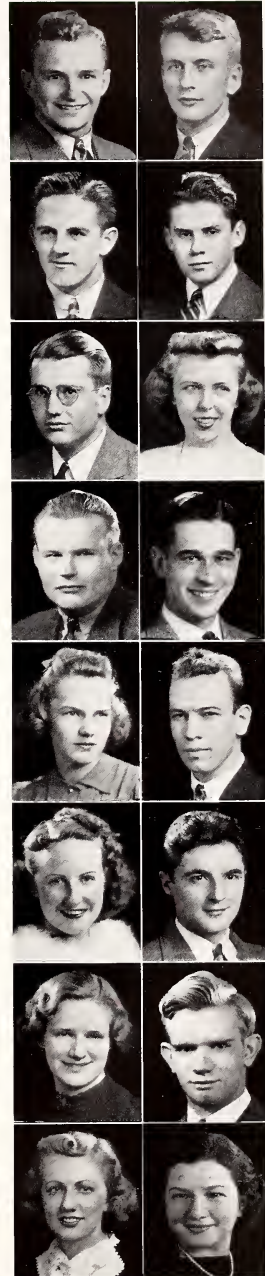
JEWETT, STERLING; Lambda Chi Alpha; Band, 1, 2, 3; Orchestra, 1; Glee Club, 1; Chapel Choir, 2; Blue Key, 2, 3; Treasurer, 4.

JONES, VIRGINIA; Eta Sigma Phi, 1, 2, 3, 4; Phi Society, 2; Phi Beta Kappa, 3.

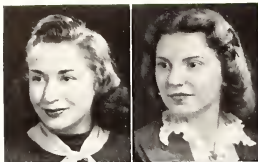
KING, JOSEPH.

KINNEY, DOROTHY; Y. W. C. A., 3, 4; W. A. A., 3, 4; Outing Club, 4; International Relations Club, 3, 4.

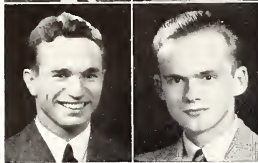
KLEMM, BETTY; Kappa Alpha Theta; Y. W. C. A., 1, 2, 3, 4; W. A. A., 1, 2, 3, 4; W. S. G. A.; Adytum Staff, 3; Phi Society; Crossed Keys; Mortar Board; Who's Who; International Relations Club, 4; W. S. G. A. Board, 1, 3, 4.



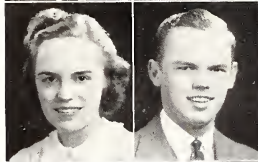
SENIORS



KCOS, BETTY: Delta Delta Delta; Y. W. C. A., 1, 2, 3, 4; W. A. A., 1, 2, 3; Freshman Guild, 1; International Relations Club, 4.



KRIEG, JEANNETTE: Kappa Kappa Gamma; W. A. A., 1, 2, 3, 4; Adytum, 3; Y. W. C. A., 1, 2, 3; Outing Board, 2; Eta Sigma Phi, 1, 2; Palate Club, 4; W. A. A. Board, 4.

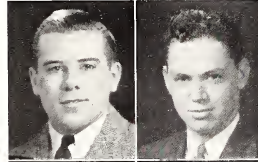


LE ROY, GENE: Beta Theta Pi; Football, 1, 2, 3, 4; "D" Association, 2, 3; President, 4.



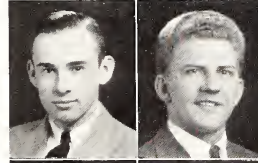
LAMB, BURJO: Lambda Chi Alpha, 3, 4; Cosmopolitan Club, 2, 3; University Players, 3, 4; Debate, 2, 3, 4; Dramatics, 2, 3, 4; Albion College, 1; Football, 1; Track, 1; Y. M. C. A., 2.

LINDAMAN, DOROTHY: Alpha Phi; Y. W. C. A., 1, 2, 3, 4; Orchestra, 1, 2, 3, 4; Glee Club, 2; Delta Omicron, 2, 3; President, 4; Chapel Choir, 1, 2, 3; Phi Society.



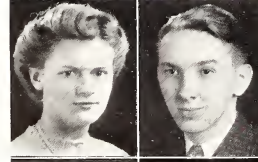
LINDSTROM, JO-IN ADOLPH: Phi Gamma Delta; Omicron Delta Kappa, 3, 4; Blue Key; Pi Delta Epsilon, 1, 2, 3, 4; Freshman Football; Varsity Baseball, 3, 4; Varsity Track, 2; Senior Class President; Adytum Staff, 1, 2, 3; Denisonian Staff, 2, 3; Engineering Society, 1, 2, 3, 4; Chairman, Junior Prom Committee; Omicron Delta Kappa, 4; M. S. G. A., 3; Who's Who.

MCCOLLUM, JAMES: Sigma Chi; Freshman Debate; Denisonian, 1, 2, 3; Denisonian sports editor, 2; Denisonian assistant editor, 3; Adytum, 1, 2, 3; Adytum sport editor, 2; Adytum editor, 3; Pi Delta Epsilon, 3, 4; Franco Calliopean, 2, 3, 4.



MCCOY, HELEN: Kappa Kappa Gamma; Y. W. C. A., 1; W. A. A., 3, 4; Adytum 1, 2, 3; Adytum associate editor, 3; Pi Delta Epsilon, 3, 4; W. S. G. A. Council, 4; Orchestra, 1, 2, 3, 4; Secretary of Junior Class, 3.

MCCOY, DONALD: Sigma Alpha Epsilon; Bowling Green University, 1, 2; Senior Associate Editor of Denisonian, 4; Pi Delta Epsilon, 3, 4.



MCGRIFFIN, ROBERT WILLIAM: Phi Gamma Delta; Portfolio, 4.

MCMINTYRE, JAMES: Sigma Chi; Morton Junior College, 2; Glee Club, 3; Masquers, 4; University Players, 3, 4; Debate, 4.



MACKELFRESH, TAYLOR H.: Beta Theta Pi; Denisonian, 1, 2, 3; Y. M. C. A. Cabinet, 3, 4; Glee Club, 2, 3; Pi Delta Epsilon, 3, 4; Math Club, 1; International Relations Club, 2.

MANDEL, DORIS PERLEY: Kappa Kappa Gamma; W. A. A., 1, 2, 3, 4; W. A. A. President, 4; W. A. A. Board, 3, 4; Y. W. C. A., 1, 2, 3, 4; Math Club, 1; Junior Orchestra, 2; Crossed Keys, 3; Mortar Board, 4; Who's Who in American Colleges.

MANDRY, DAVID: American Commons Club; Y. M. C. A., 1, 2, 3, 4; Band, 2, 3; Cosmopolitan Club, 2; Y. M. C. A. Vice President, 3, 4.

MARTINDALE, VIRGINIA: Kappa Alpha Theta; Y. W. C. A., 1, 2; Freshman Guild; Franco Calliopean, 3, 4; Portfolio, 4; Homecoming queen attendant, 4.

MATHEWS, GLORIA: Alpha Phi; Y. W. C. A., 1, 2, 3, 4; Y. W. C. A. Cabinet, 4; W. A. A., 2, 4; W. A. A. Board, 4; Orchestra, 4; Junior Orchestra, 3; Adytum, 1; Crossed Keys, 3; Judiciary, 3; Senior Adviser, 4.



SENIORS

MERCHANT, MARJORIE; Kappa Alpha Theta; Eta Sigma Phi, 1; Masquers, 3, 4; Y. W. C. A., 1, 2, 4; W. A. A., 1, 2; Phi Society.

MOLEN, FRANKLIN; Sigma Chi; Phi Society; Band, 1, 2, 3, 4; Band Manager, 4; Chemistry Society, 2, 3, 4; Adytum, 2.

MONOHAN, FRANK; Sigma Chi; Denisonian, 1; Spanish Club, 1; Franco Callipian, 1.

MORGAN, EVELYN.

MORRISON, SUZANNE; Alpha Omicron Pi; Y. W. C. A., 1, 2, 3, 4; Sorority President, 4.

MOWERY, MACILLE; Alpha Phi; Freshman Guild; W. A. A., 1; Eta Sigma Phi, 1, 2, 3, 4; Eta Sigma Phi President, 3; Phi Society; Outing Board, 2; Orchestra, 3, 4; Sorority President, 4.

MUSAL, ALFRED; Phi Delta Theta; Glee Club, 1, 2, 3, 4; Glee Club Business Manager, 4; Blue Key, 3, 4; Blue Key Vice-President; Inter-fraternity Council, 3, 4; M. S. G. A., 3, 4; Fraternity President, 4.

NORMAN, SETH; Phi Delta Theta; Football Manager, 3; "D" Association, 3, 4; University Players, 3, 4; Inter-Fraternity Council, 3; Chemistry Society, 2, 3, 4.

ORCUTT, MARION; Kappa Alpha Theta; Y. W. C. A., 1, 2, 3, 4; Y. W. C. A. Cabinet, 1, 3, 4; Freshman Guild; W. A. A., 3, 4; Denisonian, 1, 2; International Relations, 4; Freshman Adviser, 4.

OXLEY, CHARLES; Phi Delta Theta; Math Club, 1, 2, 3, 4; Band, 1, 2.

PERRY, WARREN; Sigma Chi; Freshman Debate; Baseball, 1, 2, 3, 4; Basketball, 1, 2; "D" Association, 2, 3, 4; Intra-fraternity Council, 3, 4; Fraternity President, 4.

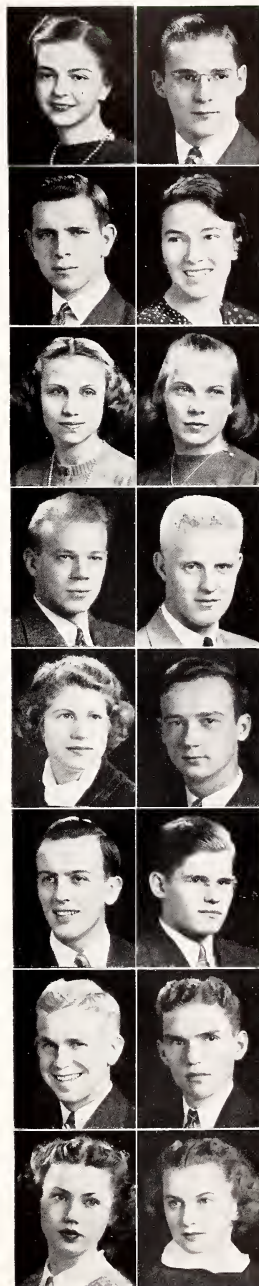
PHILLIPS, THOMAS; Chemistry Society, 2, 3, 4; Chemistry Society President, 4; Band, 1, 2, 3.

PIERCE, PHILIP; Kappa Sigma; Class Treasurer, 1; Glee Club, 3, 4; Inter-fraternity Council, 4; International Relations Club, 4; Fraternity President, 4.

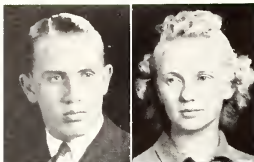
PRICE, WILLIAM; Kappa Sigma; Math Club, 1, 2, 3, 4; Math Club President, 4; Phi Society; Phi Beta Kappa, 3, 4.

FRITCHARD, DOROTHY; Kappa Alpha Theta; Y. W. C. A., 1, 2, 3, 4; Freshman Guild; Portfolio, 4.

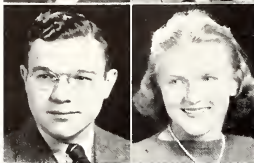
RADEBAUGH, JUDITH; Alpha Phi; W. A. A., 1, 2, 3, 4; Board, 3, 4; Y. W. C. A., 1, 2, 3; Adytum, 1, 2; Shaw House President, 4.



SENIORS

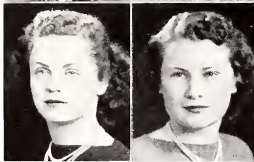


RANDOLPH, BOB: Sigma Chi Adytum, 1; Y. M. C. A., 2, 3, 4; Golf Team, 3, 4; "D" Association, 3, 4.



REED, MARY.

REHN, RICHARD: Phi Society; Chemistry Society, 3, 4.



REVIS, MURIEL: Syracuse, 1; Muskingham, 2; W. A. A., 3, 4.

SACKETT, WINIFRED: Delta Gamma, W. A. A., 1, 2, 3, 4; Board, 2, 3; Denisonian, 2; Adytum, 2; Homecoming Queen Attendant, 4; Pan-Hellenic, 2, 3, 4.



SAMMAN, JEANNE: Delta Delta Delta; W. A. A., 1; Y. W. C. A., 1, 2, 3; Calumet, 1; Denisonian, 2, 3; Spanish Club, 3; International Relations Club, 4; Pi Delta Epsilon.

SANGREN, DOROTHY.

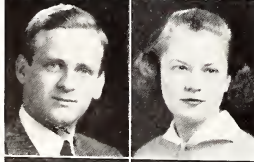


SCHULTE, JAMES, J.: Beta Theta Pi; Football, 1, 2, 3, 4; "D" Association, 2, 3, 4; International Relations Club, 4; Y. M. C. A., 1, 2, 3, 4; All-Ohio Conference, 4; Football, 3, 4.



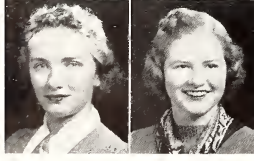
SEARS, MARY ANN: Kappa Alpha Theta; Skidmore, 1; Adytum, 2, 3; Y. W. C. A., 2, 3, 4; W. A. A., 2, 3, 4; Board, 3; Student Affairs Committee, 3, 4.

SHAFER, JEANNE: Kappa Kappa Gamma; Y. W. C. A., 1; President, 1; W. A. A., 1, 2; Phi Society, 1; Crossed Keys, 3; Mortar Board, 4; Pan-Hellenic Council, 3, 4; President, 4; Who's Who, 4; Homecoming Queen, 4; Kappa Gamma President, 4.



SHANK, RUTH: Alpha Phi; W. A. A., 1, 2, 3, 4; Y. W. C. A., 1, 2, 3, 4; Cabinet, 1, 2, 3, 4.

SHAW, BEATRICE: Delta Delta Delta; Adytum, 1; Y. W. C. A., 1, 2; W. A. A., 1, 2.



SHEPARD, THOMAS REESE: Beta Theta Pi; President, 4; Denisonian, 1; Basketball, 1; Y. M. C. A., 1; Chairman of Student Committee for Control of Autos, 4; Inter-Fraternity Council, 4.

SHERWOOD, MARY ELIZABETH: Chi Omega; Phi Society, 1; W. A. A., 1, 2, 3, 4; Board, 3; Y. W. C. A., 1, 2, 3, 4; Eta Sigma Crossed Keys, 3; Vice-President - Junior Class, 3; Mortar Board, 4; W. S. G. A., 3, 4; President, 4; Who's Who, 4.

SHINN, MARY: Kappa Alpha Theta; Stephens College, 1, 2; Denisonian, 3; International Relations, 4.

SHOCK, JANET: Kappa Kappa Gamma; Freshman Guild; Y. W. C. A., 1, 2, 3; W. A. A., 1, 2, 3, 4; Board, 2; "D" Association, 2, 3, 4; Varsity Golf Team, 2, 3, 4; Adytum, 1, 2, 3.



SENIORS



SHRYOCK, JAMES; Washington College, 1, 2, 3; Y. M. C. A., 1, 2, 3; Chemistry Society, 3; Inter-fraternity Council, 3; Chemistry Society, 4.

SIEGRIST, GEORGE SAMUEL; Phi Gamma Delta; Glee Club; Business Manager of Portfolio, 4.

SIMPSON, ROBERT; Denisonian Staff, 1; Adytum, 2; Engineering Society, 2; Football Trainer, 2, 3; Math Association, 1, 2, 3, 4.

SOWLE, MARGARET; Alpha Phi, Freshman Guild, 1; W. A. A., 1, 2; Y. W. C. A., 1, 2; International Relations Club, 4.

STIMMEL, BETTY LOU; Stephens College, 1, 2; Y. W. C. A., 3, 4.

STOLL, FLORENCE; Alpha Phi; Y. W. C. A., 1, 2, 3, 4; W. A. A., 1, 2, 3, 4; Outing Board, 3; Junior orches 3; Mortar Board, 4; President, 4; Judiciary, 4; Senior Adviser, 4.

SWEET, VIRGINIA; Y. W. C. A., 1, 2, 3, 4; W. A. A., 1, 2, 3, 4; International Relations Club, 4.

TAYLOR, BETTY; Kappa Alpha Theta; W. A. A., 1, 2, 3, 4; Y. W. C. A., 1; Phi Society; International Relations Club, 2, 4.

TAYLOR, ELIZABETH; Chi Omega; W. A. A., 1, 2, 3, 4; Y. W. C. A., 1; Freshman Cabinet, 1; Pan-Hellenic Council, 3, 4; Junior Prom Committee.

TRUESDALL, MARGARET; Kappa Alpha Theta; Y. W. C. A., 1, 2, 3, 4; W. A. A., 2, 3, 4; Adytum, 3; University of Arizona, 3.

VAN HORN, ELIZABETH; Alpha Omicron Pi; Y. W. C. A., 1, 2, 3, 4.

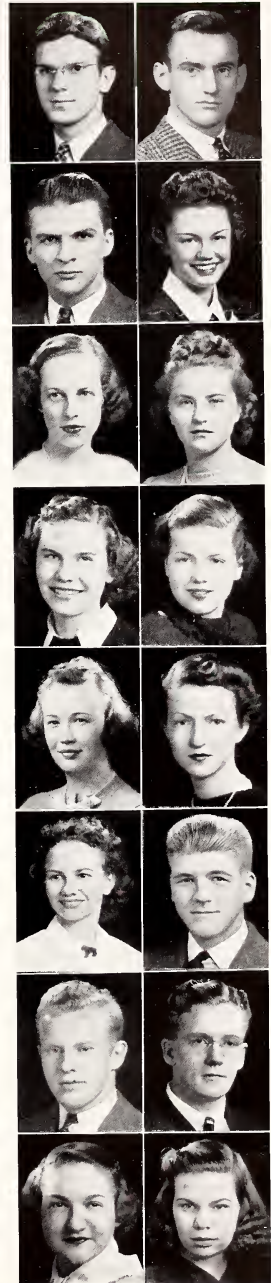
VAN VOORHIS, SAMUEL; Beta Theta Pi; Denisonian, 1, 2, 3; Adytum, 1, 2; Camera Club, 1, 2; Y. M. C. A., 1, 2, 3.

VENNING, JACK; Sigma Chi; Freshman Football, 1; Denisonian, 1, 2, 3; Adytum, 1, 2, 3; Associate Editor, 3; Y. M. C. A., 1, 2, 3.

VICK, ROBERT; American Commons Club; Deputation, 1, 2, 3, 4; Debate, 1, 2, 3, 4; Debate, 1, 3, 4; Band, 1, 3; Orchestra, 1, 2, 3, 4; Y. M. C. A., 1, 2, 3, 4.

VOIHIS, BARBARA; Kappa Kappa Gamma; Glee Club, 1, 2; W. A. A., 2, 3, 4; Y. W. C. A., 1; Orchest, 3, 4.

WALKER, BARBARA; Masquers, 3, 4; Denisonian, 4; Y. W. C. A., 1, 2, 3, 4; Y. W. Cabinet, 3; W. A. A., 1, 2, 3.



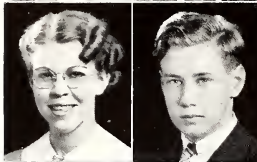
SENIORS



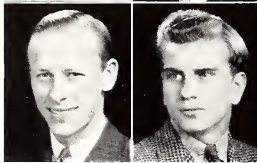
WATSON, BARBARA: Kappa Kappa Gamma; Y. W. C. A., 1, 2, 3, 4; W. A. A., 1, 2, 3, 4; Board, 4; Orchestis, 1, 2, 3, 4; President, 4; Masquers, 3, 4; W. S. G. A. Board, 4; Vice-President of Sophomore Class, 2; Secretary of Senior Class, 4; Adytum, 4.



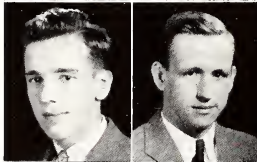
WEBB, STAFFORD: Lambda Chi Alpha; Band, 1, 2; Y. M. C. A., 1, 2, 3; Cabinet, 2; Cosmopolitan Club, 2; Inter-Collegiate Debate, 1, 2, 4; Masquers, 2, 3, 4.



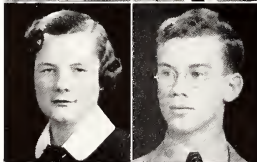
WELCHER, MARION: Delta Gamma; Arlington Hall Junior College (1); Y. W. C. A., 2, 3, 4; W. A. A., 3, 4; International Relations Club, 4; Adytum Staff, 4.



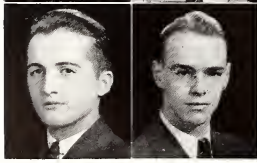
WESTCOTT, PRISCILLA: Delta Gamma; Monticello College, 1; Women's Glee Club, 3, 4; Manager, 4; Delta Omicron, 3, 4; Y. W. C. A., 2, 3, 4; W. A. A., 2, 3, 4; Senior Adviser, 4.



WHEELER, CHARLES: Phi Delta Theta; Basketball Trainer, 1, 2; Manager, 3; "D" Association, 3, 4; Glee Club, 3, 4; Chemistry Society, 2, 3, 4; Vice-President, 4; Y. M. C. A., 1, 2, 3, 4.



WHEELER, ELNORA: Alpha Xi Omega; Orchestra, 1, 2, 3, 4; W. A. A., 1, 2, 3; Y. W. C. A., 1, 2, 3, 4; Ouring Board, 3; Crossed Keys, 3; Pan-Hellenic, 3, 4; International Relations Club, 4.



WHITE, RICHARD HIRAM: Phi Gamma Delta. Freshman Track; Varsity Track, 2, 3, 4; Varsity "D" Track, 3, 4; Glee Club, 1, 2, 3; "D" Association, 3, 4.



WHITEHEAD, RICHARD: Phi Gamma Delta.

WILEY, ROBERT: Kappa Sigma; Fresh Track, 1; Varsity Track, 2.

WILLER, RUSSEL: Kappa Sigma; Debate, 1; Freshman Guild, 1; Spanish Club, 1; Denisonian, 1; M. S. C. A., 1; University of Cincinnati, 2; Varsity Trainer, 3; Student Affairs Committee, 4; Student Constitution Committee; International Relations Club, 4.

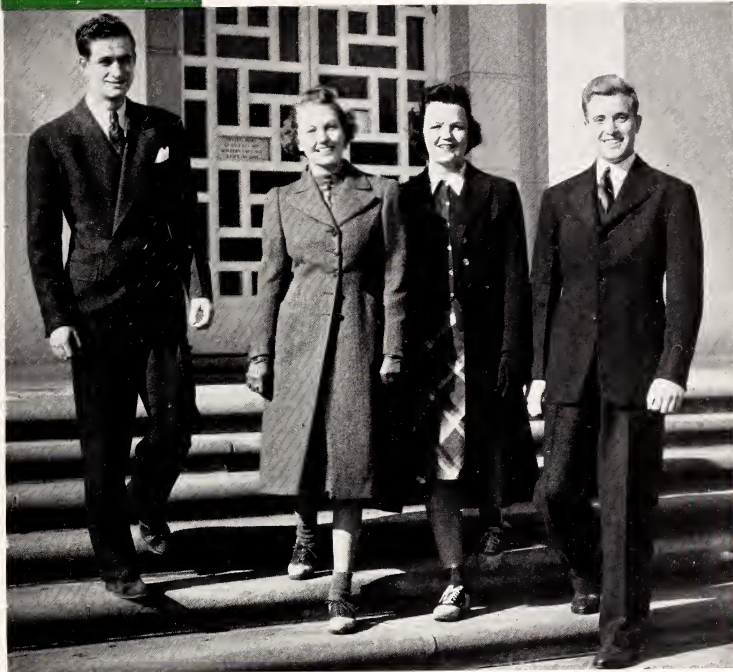
WILLIAMS, BETTY: Kappa Alpha Theta; Randolph-Macon Woman's College, 1; President Kappa Alpha Theta, 4; Vice-President Senior Class, 4; Adytum, 3; Y. W. C. A., 2, 3, 4; W. A. A., 2, 3, 4; Treasurer, W. A. A., 3; Orchestis, 2, 3, 4; Chapel Choir, 4.

WILSON, GORDON: Lambda Chi Alpha; German Club, 2, 3; Cosmopolitan Club, 2; Portfolio, 4.

WOLFE, ROBERT: Sigma Chi; Denison University Players, 4; Football Manager, 2; "D" Association, 3; Treasurer, 4; Blue Key, 2, 3; President, 4; O. D. K., 4; Math Club, 1, 2; Treasurer of Class of 1940, 3, 4; Phi Society, 2.

WRIGHT, ROBERT JAMES: Phi Gamma Delta; Phi Society; President Phi Mu Alpha, 3, 4; Phi Mu Alpha, 1, 2, 3, 4; Glee Club, 1, 2, 3, 4; President of C. L. Herrick Geological Society, 4; Orchestra, 3, 4; Band, 1, 2; Freshman Guild; O. D. R., 4.





WILLARD KIBBY, PRESIDENT

JANE MARTIN, SECRETARY

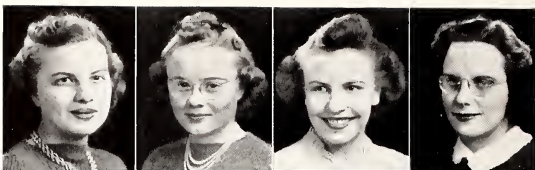
LUCILLE JEFFREY, VICE-PRESIDENT

TIM NORPELL, TREASURER

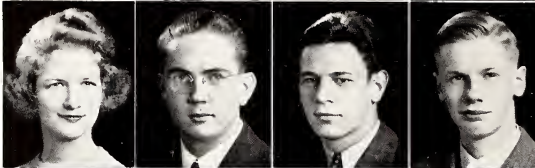
*Junior Class
of
1940*

JUNIORS

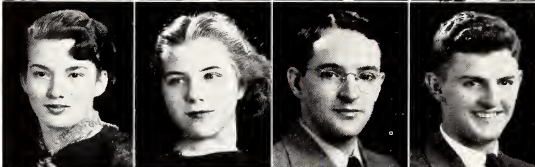
LEILA ACKERMAN
CHARLYN ADAMS
BARBARA ANDERSON
MARY ATWATER



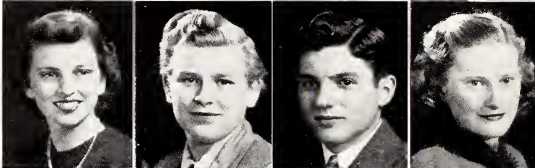
PRISCILLA BARBOUR
PAUL BARHOOVER
ALFRED BARRAN
JOHN BARRINGTON



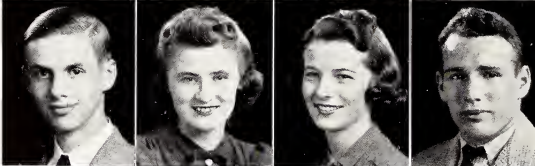
ADELA BECKHAM
MARY BLAIR
HAROLD BLOSSER
CHARLES BOGGS



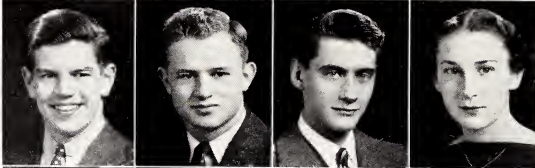
ELISE BONNET
BETTY BOUGHNER
ROBERT BRAUNING
SHIRLEY BROWN



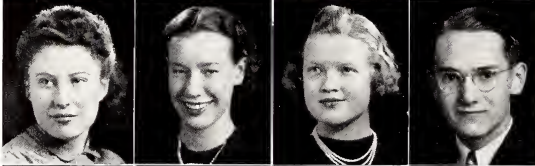
REID BRYSON
LOIS BUCHANAN
JEAN BUNJE
ROY BURKHART



SCOTT CAMPBELL
JACK CARL
HUGH CHITTENDEN
JUNE CHRISTIAN



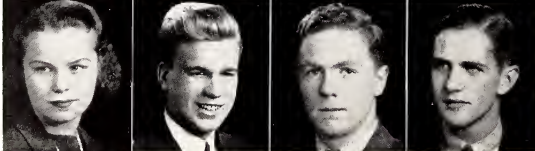
KITTY COLLINS
ELIZABETH COWGILL
CAROLYN CRAIG
MARVIN CUMMINGS



DOROTHY DANN
EMAJEAN DAVIS
ELIZABETH DEAL
EDWARD DEEDS



JANE DORSEY
JACK DOWNS
RALPH DRAKE
WILLIAM EDWARDS



Leila Ackerman, Illinois Wesleyan's contribution to the campus . . . **Charlyn Adams**, Delta Omicron starlette who has learned a thing or two since she came to college . . . **Bobbie Andersen** divides her time between "Hamlet" and McIntyre . . . **Mary Atwater**, a gal with an air of irresponsibility . . . **Taylor Bailey, Jr.** transfer who belongs to the S.A.E.'s . . . **Sas Barbour**, "I got another letter from Ned" . . . **Paul Bar Hoover**, Commons Club bursar and football aspirant . . . **Al Barran, Jr.** Prom chairman and he's crazy about a "rabbitt" . . . **Tiger Barrington**, Kappa Sig's Grantland Rice . . . **Adela Beckham**, a red-head who writes flaming verse . . . **Mary Blair**, a Beaver dish, phone number in the directory . . . **Harold Blosser**, Denison's "Little Minister" . . . **Pete Boggs**, most eligible bachelor in Granville . . . **Teddy Bonnet**, Alha Phi Rembrandt—artist to you . . . **Betty Boughner**, new prexy of Alpha Xi and a real "Babe Didrikson" . . . **Paul Braden**, a Newark advocate . . . **Robert Brauning**, not the noisy type but carries on the Brauning tradition . . . **Shirley Brown**, wears a Sigma Chi trademark and her sorority's choice for Adytum queen . . . **Reid Bryson**, a Phi Delt with a passion for rocks . . . **Lois Buchanan**, "Stay as sweet as you are" . . . **Bunnie Bunje**, Barran's baby, never too busy for a date . . . **Roy Burkhardt**, the strong, confident type—football hero too . . . **Scottie Campbell**, pet peeve is "Don't they make a cute couple?" . . . **Jack Carl**, he's Suffrin for Joey . . . **Hugh Chittenden**, Commons Club forensic flash . . . **June Christian**, one of the girls with heart trouble at home . . . **Jane Cockerill**, genial Jane is new on the campus this year . . . **Kitty Collins**, leader of W.A.A.'s outdoor girls and wearer of the "D" . . . **Libby Cowgill**, one-half of the guitar duet . . . **Craigie Craig**, Delta Gam beauty of the book stacks without that bookish personality . . . **Marvin Cummings**, one of those deep thinkers—a philosopher . . . **Dottie Dann**, says a friendly "hello" to each and everyone . . . **Emajejan Davis**, she'll teach the younger generation phys. ed. . . . **Betsy Deal**, Chi O queen who starts her reign in a new palace . . . **Ed Deeds**, has Phi Beta "Overtones" . . . **Jane Dorsey**, this immaculate Theta wants a Roehm-mate . . . **Jack Downs**, a Phi Delt who gets around Pan-Hellenically . . . **Torchy Drake**, a brave econ. major and intra-mural athlete . . . **Bill Edwards**, Lehigh transfer and catch of the season . . .

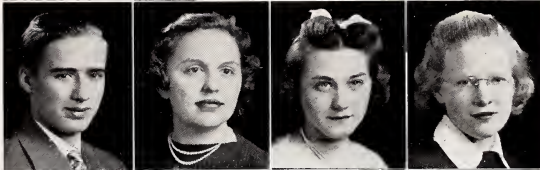
JUNIORS

Bette Ellis, "Mrs. Howell says quote" . . . **Fink Finkenbeiner**, "Well, the boys will support us" . . . **FINNEY FINLEY**, Duffy's dynamic atom . . . **Dick Fishell**, pre-med student and Phi Delt funny man . . . **Dave Flory**, there are no more at home like him . . . **Ruth Ford**, are those big brown eyes as innocent as they seem? . . . **Tess Forsythe**, keeps Beaver in stitches . . . **Betty Foster**, the only one who can melt Frost . . . **Rachel Foster**, those blonde locks are legitimate—really . . . **June Freer**, Sigma Chi sweetheart, Phi Psi favorite, step up, who's next? . . . **Richard Frye**, fond of Todhunter and pork pie hats . . . **Dorothy Funk**, an amiable addition via the transfer route . . . **Dottie Galloway**, Whistler whiz from Cedarville . . . **Muscles Gardiner**, has Kappa's prettiest pair of lips and an eye on the future . . . **J. J. Gates**, with plenty of money and Seth . . . **Dottie Gatton**, Gatton's sure to gat along . . . **Paul Gillespe**, demon social light, not more than two dates a year . . . **Chuck Goux**, every spring we think he'll change to Wesleyan . . . **Jackson Gowdy**, Tiger, Tiger, burning bright, goes to Gilpatrick every night . . . **Meta Gregg**, Meta to you maybe, but caviar to Clive . . . **Tom Gregg**, oh pShaw, he transferred to Northwestern . . . **Lillian Grimm**, Grimm becomes Grin when Riddel walks in . . . **Mo Haines**, first in cars, first in skiis, first to discard his overcoat . . . **Rosie Hall**, 40 second kid and keeps three on the string successfully . . . **Dick Hall**, "Phyl's" up his spare time with Watkins . . . **John Hammer**, Kappa Sig's own "Hammerhead" . . . **Ginger Hammerle**, the D. T. D. pin surprises us, how long will it last? . . . **Don Hanna**, "I get along without you very well" . . . **Stan Hanna**, the Kappa Sig partner in the Phi Bete couple . . . **Bob Hayes**, Masquer's technician expert, where would "Abe Lincoln" have been without him? . . . **John Herron**, big school play boy going hog wild at D. U. . . . **Jack Hoopes**, the B-Baron bishop with the Cleveland retreat . . . **Jim Howland**, has what most girls want, curly hair . . . **Eleanor Howlett**, Silence is golden . . . **Mike Hubona**, Sem satellite with a new way of looking at things . . . **Jeanette Huff**, music major and not so shy as she used to be . . . **Phyllis Huffman**, culture in italics . . .

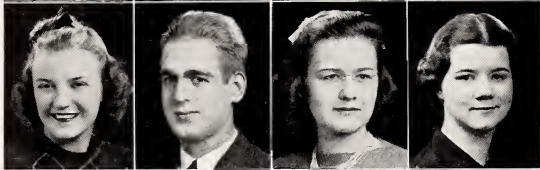
JUNIORS



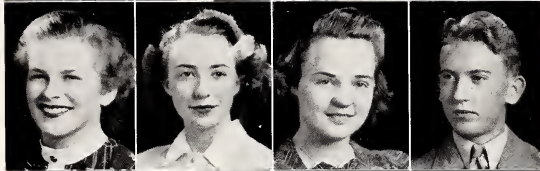
BETTE ELLIS
PHYLLIS FINKENBINER
BARBARA FINLEY
RICHARD FISHELL



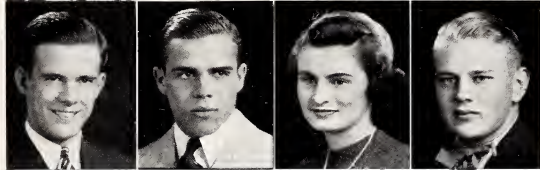
DAVE FLORY
RUTH FORD
MARIAN FORSYTHE
RACHEL FOSTER



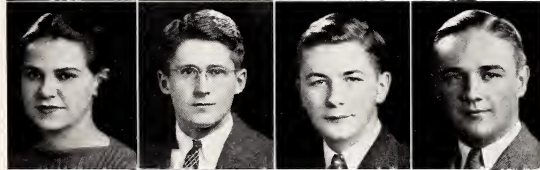
JUNE FREER
RICHARD FRYE
DOROTHY FUNK
DOROTHY GALLOWAY



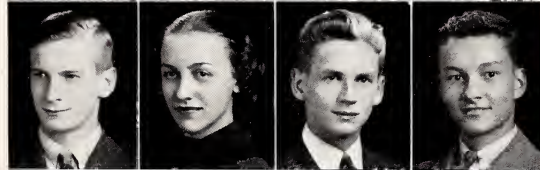
MARY GARDINER
JENNY JUNE GATES
DOROTHY GATTON
PAUL GILLESPIE



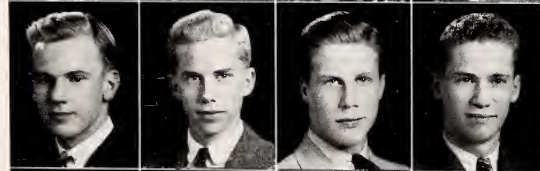
CHARLES GOUX
ROBERT GOWDY
META GREGG
TOM GREGG



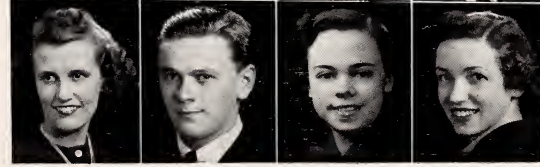
LILLIAN GRIMM
WILLIAM HAINES
JIM HALL
RICHARD HALL



JOHN HAMMER
VIRGINIA HAMMERLE
DON HANNA
STANLEY HANNA

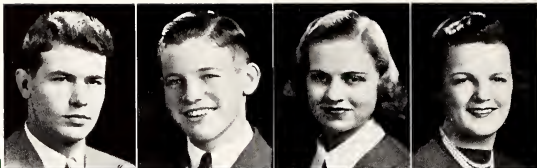


ROBERT HAYS
JOHN HERRON
JACK HOOPES
JAMES HOWLAND

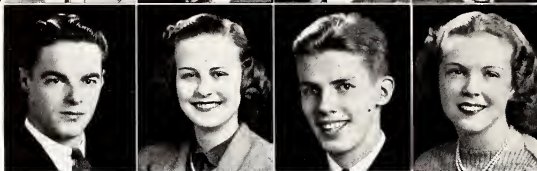


ELEANOR HOWLETT
MICHAEL HUBONA
JEANETTE HUFF
PHYLLIS HUFFMAN

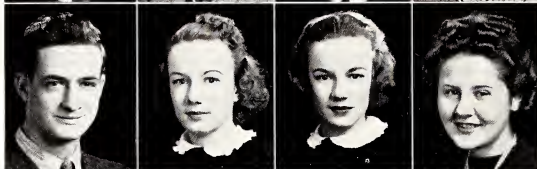
JOHN INNIS
DONALD IRWIN
MARGARET IZANT
LUCILLE JEFFREY



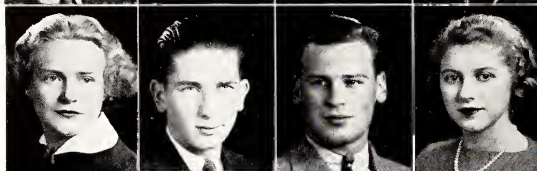
STILES JEWETT
ELAINE JOHNSON
HOWARD JOHNSON
WINIFRED JONES



WILLARD KIBBY
BARBARA KILLIAN
JEAN KILLIAN
JANE KING



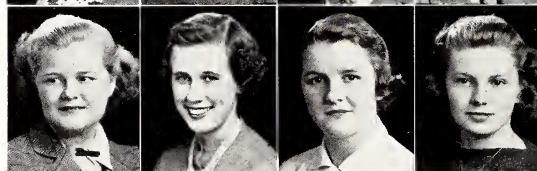
JEANNE KLEMM
HARLAN KLEPPER
KARL KLOMANN
JEAN KONCANA



LILLIAN KOVACHY
LA VERNE KULHANEK
FRANK LAEGELER
WARD LAHM



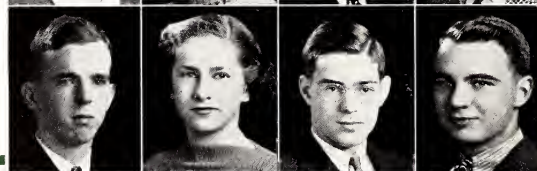
MARY LANCASHIRE
MARY VIRGINIA LAY
SUSAN LEROW
ANN LEWIS



LUCY LEWIS
DORIS LUNDY
WILL McCARTNEY
JOE McCLANATHAN



CURTIS McKINNIE
MARJORIE McNEILL
ROBERT MACOMBER
JACK MARSHALL



JANE MARTIN
JULIA MATHER
ROBERT MAXWELL
TOM MAXWELL

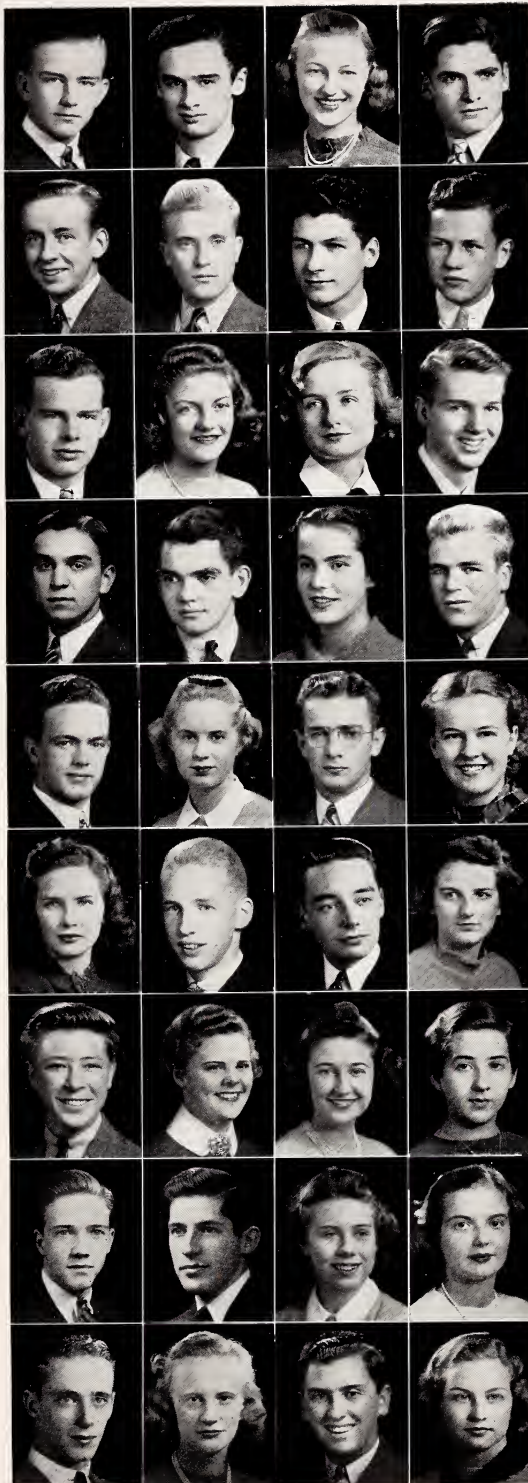


John Innis, quiet Granville Beta Kappa, does his bit for the library . . . **Donald Irwin**, Beta Kappa's gift to Denison women . . . **Peg Izant**, more fun being a probate than a Phi Beta . . . **Chile Jeffrey**, Theta queen who goes in for publicity—men . . . **Elaine Johnson**, got her accent in two short years . . . **Eric Johnson**, absent with leave this semester . . . **Howie Johnson**, "Have you ever seen a dead man?" . . . **Winnie Jones**, Delta Gam bridge expert as we all know too d--- well . . . **Williard Kibby**, does everything but kiss babies and hand out cigars . . . **Barbara Killian**, double feature . . . **Jean Killian**, added attraction—Kappa Sig pin . . . **Jane King**, we'd love to meet your Sigma Chi . . . **Klemmie Klemm**, "Flip"ed a coin and Jack was "Down" . . . **Harley Klepfer**, head of men's judiciary and a corner on the campus cars . . . **Karl Klomann**, self-confident Sig ornament on the campus . . . **Jean Koncana**, Masquer's find of the season . . . **Val Kovachy**, Sigs run in the family . . . **La Kulhanek**, campus cop and Kappa Sig's dream girl . . . **Ward Lahm**, phys. ed. major and firey shortstop of D. U.'s baseballers . . . **Frank Laegeler**, tracksters count on Laegeler's legs . . . **Ta Lancashire**, her laugh is her identification . . . **Mary Virginia Lay**, a loyal A. O. Pi . . . **Sue LeRow**, another artist's "model" . . . **Queenie Lewis**, never without that bright Beta diamond . . . **Lucy Lewis**, Kappa prexy last seen in a maroon Buick with a New York license . . . **Dick Lewitt**, handles half the Killian combine and has never been mixed up . . . **Doris Lundy**, a smile for everyone . . . **Bill McCartney**, sleepy Sig who likes June, bridge, and brew . . . **Joe McClanathan**, geology brain, competes with Rosie . . . **Curtis McKinnie**, a member of the club across from the library . . . **Marj McNeill**, join the navy in a hurry or you might miss the boat . . . **Bobbie Beachcomber**, engineering brainchild and gripe-editorialist . . . **Jack Marshall**, publication big-wig and always dressed "fit to kill" . . . **Marty Martin**, an apple for the teacher . . . **Judy Mather**, an A. C. C. memento shines right next to her sorority's brand . . . **Bob Maxwell**, Gamma Xi prexy and Portfolio's new chief . . . **Tom Maxwell**, a Pre-Med student who's been signed by a red-head . . .

JUNIORS

Jack Montgomery, class of 41's youngest and he doesn't look a day—over . . . **John Moore**, brilliant—editorial opinion—editor in chief of Denisonian with time for Glee Club and University Players . . . **Richard Neal**, S. A. E. newcomer and asset . . . **Ney Nebel**, the inspiration of a local "Beechies" agent . . . **Johnnie Nelms**, Joe's little brother . . . **John Neubert**, the lad with the Sipple-ly beautiful voice . . . **Tim Norpell**, Phi Gam, Phi Beta prexy who dates around . . . **C. I. Owens**, thinks Theta lips are sweetest . . . **Spenser Parsons**, A. C. C. principal and a tricky debater . . . **Park Dickie Paxton**, found either armed with a camera or haunting the physics lab . . . **Bebe Phillips**, holds a place in "Rhett" Davies' affections . . . **Pick Pickrel**, legacy supreme, Tri-delts and Democrats "pick" her . . . **Robert Pifer**, biggest man in Gamma Xi . . . **Podunk Podorean**, Union Station shining light, haunts with Spook on dark nights . . . **John Pratt**, has been known to prefer blondes . . . **Jean Preston**, Jewett Prest-on a pin . . . **Sarj Price**, Piels and Price, the people's choice . . . **Don Purvis**, Lamda Chi pillar . . . **Fritz Radke**, well known to all of us . . . **Bob Randolph**, left at semesters, if you need golf clubs, he sells 'em . . . **Sally Rea**, Delta Gam prexy and a queen with a "case" on a Phi Delt . . . **George Reed**, A. C. C. supporter from Steubenville . . . **Mary Jane Reynolds**, freckled A. O. Pi with a reputation—for athletics . . . **Dottie Rhoton**, D. G. "Camille" . . . **Emory Richards**, coat of arms, crew cap and skiis . . . **Betty Rowe**, Rowe, Rowe, Rowe your boat down to Missouri U. . . . **Joe Royce**, the daring young man on the flying trapeeze . . . **Maddy Rupp**, Denison's Prime Minister . . . **Barb Ruschli**, "I think the boys are awfully tight with their pins here" . . . **Mary Lou Ryan**, tiny Y. W. head with big ideas . . . **Frank Saxton**, week end—hospital, week end—hospital . . . **Cy Scarritt**, the "Ed" hopes you'll like this volume . . . **Ginny Schubert**, an old flame never dies . . . **Scotcho Scott**, "Look away, look away Dixie land" . . . **Jack Servis**, we hear they call him S-n-ervis . . . **Sue Sharkey**, watches those chapel misbehaviorites . . . **Wilbur Shorts**, never says a superflous word . . . **Diana Shuebruk**, Newark number with friends plus . . .

JUNIORS



JOHN MONTGOMERY
JOHN MOORE
ELEANOR NEBEL
JOHN NELMS

JOHN NEUBERT
THOMAS NORPELL
WILLARD OWENS
SPENCER PARSONS

DICK PAXTON
BEBE PHILLIPS
ELEANOR PICKREL
ROBERT PIFER

CHARLES PODOREAN
JOHN PRATT
JEAN PRESTON
IRA PRICE

DON PURVIS
SALLY REA
GEORGE REED
MARY JANE REYNOLDS

DOROTHY RHOTON
EMORY RICHARDS
JACK ROEHM
BETTY ROWE

JOE ROYCE
MADELEINE RUPP
BARBARA RUSCHLI
MARY LOU RYAN

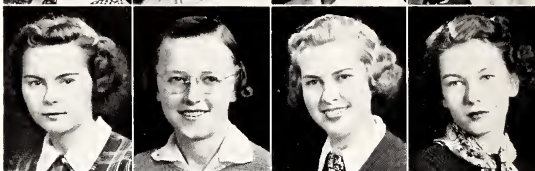
FRANK SAXTON
RALPH SCARRITT
VIRGINIA SCHUBERT
KAY SCOTT

JACK SERVIS
SUE SHARKEY
WILBUR SHORTS
DIANA SHUEBRUK

ELEANOR SHUMAKER
MARCIA SIPPLE
CAMILLE SKALAK
BETTY SLADE



JEANNE SMITH
MARY E. SMITH
RUTH SMITH
PHYLLIS STACY



BETTY STEWART
CONSTANCE STILLWELL
VIRGINIA STRAITH
BETTY JANE STRATTON



TIM SWARTZ
DAVE TAYLOR
HOWARD THOMAS
BEVERLY THOMSEN



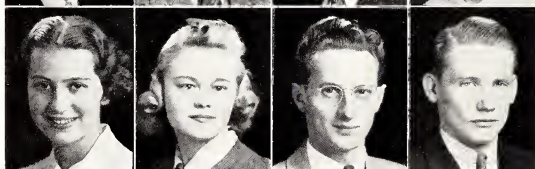
DAVID TIMRUD
JAMES TOMPERT
HARRY TOWNSLEY
CHARLENE TREBING



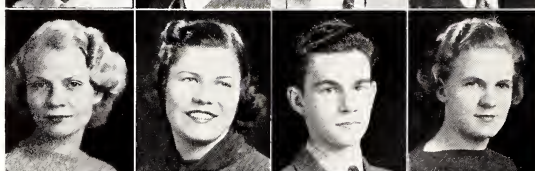
FRANKLIN TURNBULL
FREDERICK UHLMAN
JAMES UMSTED
EDITH VAN HORN



RUTH VIERLING
VIOLET WALLGREN
BARTON WALKER
EUGENE WALKER



ELLEN WATHNE
PHYLLIS WATKINS
RAYMOND WEST
ANN WILEY



DONALD WILLIAMSON
WILLIAM WILSON
ELIZABETH WRIGHT



Woody Shumaker, gets a "special" from her special every Sunday morning . . . **Marcia Sipple**, a Junior Phi Bete, one of the upper few . . . **Cam Skalak**, Alphaffected Phi . . . **Betty Slade**, an athletic ace who wears Kappa Sig jewelry . . . **Jeanne Smith**, those snapping black eyes got her a sword and shield . . . **Monnie Smith**, any task you give her is efficiently done . . . **Ruth Smith**, "I think I'll write a letter and hope it doesn't arrive" . . . **Phyl Stacy**, Oh yes, we of the theater . . . **Betty Stewart**, trying out her father's courses this year . . . **Connie Stilwell**, one of the fourth floor elite of Shaw . . . **Virginia Straith**, a gal who is a real equestrienne . . . **B. J. Stratton**, a phys. ed. major interested in Art . . . **Tim Swartz**, partner in Swartz-Oberhelman heartbreaking machine . . . **Dave Taylor** Palette club head who slipped the Belle a ring . . . **Howie Thomas**, Co-captain of the Large Red . . . **Beverly Thomsen**, a Chi O active at last—bats in the A. C. C. league . . . **Dave Timrud**, "Superman"—actor, student, author, tutor, gymnast, etc. . . . **Jim Tompert**, Sigma Chi inspiration for "My Silent Mood" . . . **Harry Townsley**, Glee Club "Busyness-Man" . . . **Brenda Trebing**, Sigs, Phi Delts, and Betas compete . . . **Fritz Turnbull**, Blue Keyer and perhaps a future "Mr. Turnbull" of our econ. department . . . **Fred Uhlman**, Bowling Green bulldog of Gamma Xi . . . **Umpie Umsted**, connoisseur of fine arts . . . **Edith Van Horn**, one of the better Beaver babes . . . **Ruth Vierling**, Chi O with the dreamy eyes . . . **Barton Walker**, Phi Gam transfer from Northwestern, all round guy . . . **Gene Walker**, what New Philadelphia, Ohio, did for us . . . **Vi Wallgren**, W. A. A. president parading a Beta pin from Case . . . **Ellen Wathne**, blonde Kappa with lotsa' stories of the G. I. S. . . . **Phyl Watkins**, fond of Newark's pride and joy, fat duck . . . **Ray West**, his nickname is Breezy, nuff' said . . . **Ann Wiley**, came all the way from Tennessee this little rose of Alpha Xi . . . **Don Williamson**, a representative of Pataskala who warbles with the club of Glee . . . **James Wilson**, departed member of upper Arlington contingent . . . **Bill Wilson**, zoologist supreme and pre-med grinder . . . **Don Woodring**, one of the Lamda Chi ranchers . . . **B. J. Wright**, master of all sports— one of Miss Barr's little girls.

JUNIORS

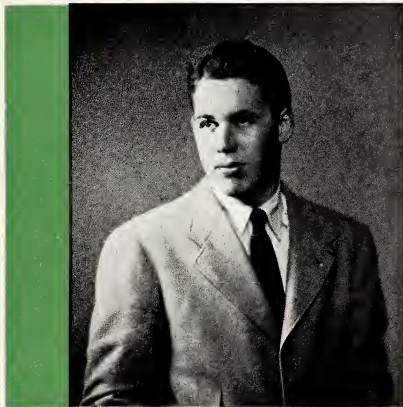
Genial Junior Gents in Many Moods



WILSON
DRAKE
HANNA

PAXTON
FISCHELL-MACOMBER

HALL, SCHWARTZ
JOHNSON
FISCHELL

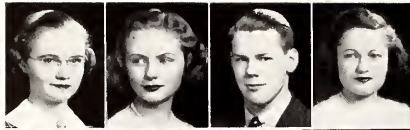


GEORGE TRAUTMAN, JR., PRESIDENT

Sophomore Class

SOPHOMORES

MARY K. ADAMS
JOAN ARMSTRONG



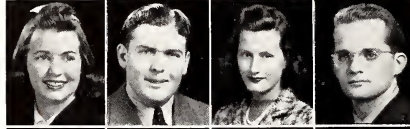
DONALD ASHLEY
NANCY BACKUS

RUTH BALDWIN
NANCY BASH



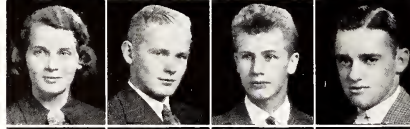
JUDY BATEMAN
ROBERT BAUMGARTNER

GEORGIA BAYRD
JACK BELLAR



BETTY BENDER
ROBERT BIGHOUSE

CHARLOTTE BOGGS
DELBERT BRANNAN



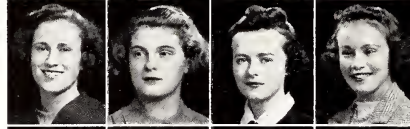
EARL BRANNON
DICK BRIDGE

JACK BRIGHAM
GLEN BRITTEN



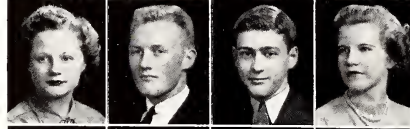
SUE BROWN
CAROLYN BRUCE

MARGE BRUCKERT
ANN BURGESS



DORIS BURKHOLDER
PEGGY BURNETT

BETTY BUTZMAN
JOE CALLAWAY



ED CAMPBELL
JEANNE CHALFANT

SID CHAPIN
JIM CHRISTIE



MARY JANE CLARK
CATHERINE COFFMAN

FRANK COLLINS
PEG COLLINS



MARTHA COLLORD
MARY ALICE CONGER

SOPHOMORES

SOPHOMORES

JERRY COWLES

BETTY CRAIG

CHARLES CRAWFORD

MARY DANIELS

ROBERT DAVIES

RITA DAYHOFF

CLARENCE DENTON

JACK DEWEY

ANN DORSEY

MARIAN DORSEY

WILLIAM DORSEY

MARY DUNLAP

RICHARD ELMER

BETTY ENGLISH

JUNE ERNEST

TOM FOX

SUE FROWINE

PANSY FRUSH

ROBERT GRABNER

JACQUELINE GRAVES

JANET GREENE

DORIS GREGG

SALLY HARE

EARL HAYNES

CLIVE HELFERICH

MARTHA HEYDEL

LOUIS HICK

MARJORIE HOFELICH

MARY ANN HOFFINE

JAMES HOLDEN

ANN HOPKINS

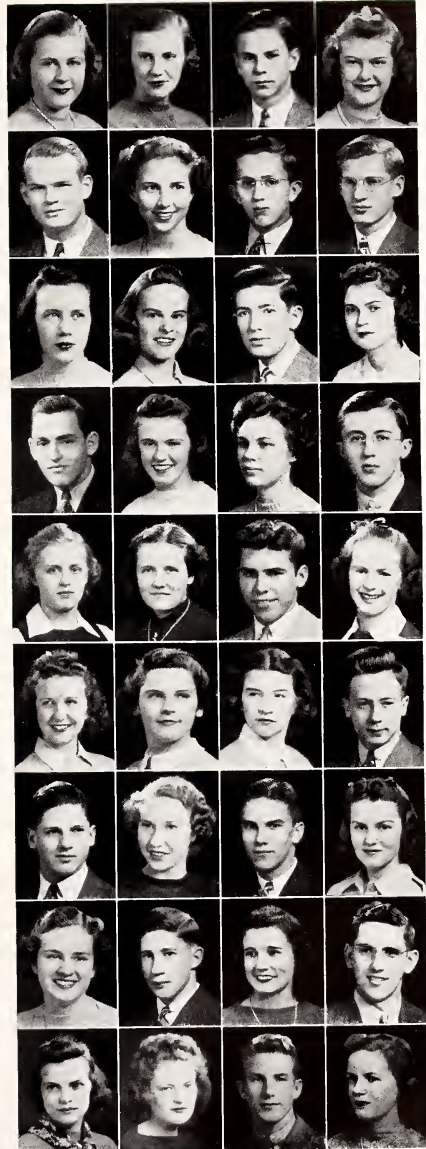
ROBERT HOWARD

RUTH HOWARD

MARJORIE HOWELLS

RAYMOND HUDSON

LORRAINE HUGHES





HAL HUMPHRIES
 ANNE HUNTER
 VIRGINIA IRELAND
 FRANK IRVIN

HELEN JAWORSKI
 DEL JOHNSON
 J. B. JOHNSON
 RAY JOHNSON

CHARLES JONES
 JACK JONES
 TOM JUDD
 WILLIAM KATES

ROBERT KENDALL
 VIOLA KLEINDIENST
 BARBARA KNOOP
 MARY FRAN KOHLER

ANNA KREIDER
 MARJORIE LARWOOD
 JOHN LAY
 JOHN LEE

ANN LEWIS
 PAUL LEWIS
 ROBERT LITTLE
 BARBARA LOVE

BERT LUTTON
 RICHARD McBURNEY
 EMILY McCORNACK
 EDWARD McFADDEN

LILLIAN McFADDEN
 SUE McKEE
 ROBERT MACKENZIE
 DAVE MARQUARDT

EDWARD MALISZEWSKI
 CAROLYN METCALF
 STEPHEN MINTON
 JEANNE MITCHELL

SOPHOMORES

SOPHOMORES

WAYNE MOORE

ROBERT MORLAN

GEORGE MUNGER

JACK MURPHY

ELIZABETH MYLER

PRISCILLA MYLER

DONALD NYGREN

ARTHUR ORME

ALISON PHILLIPS

MARY PILGRIM

ISABEL RAMSOWER

ROGER REED

LOUISE RICHARDS

MARJORIE RICHEY

ROBERT ROBEY

PAUL ROBINSON

ROBERT SCHROEDER

MARION SCOTT



JAMES MOYER

GEORGE MUENCH

WILLIAM MURPHY

SHIRLEE MUTH

HELEN NEEDHAM

JOHN NICHOL

JOHN ORWIG

HALL PACKARD

HARRIET PUFFER

MYRLE PULLIS

WILLIAM RENDALL

WILLIAM RESTRICK

JACK RILEY

JEFF ROBERTS

BRINCA ROOT

RUTH ROUBEUSH

LESLIE SEAGRAVE

HELEN SEFTON

SOPHOMORES

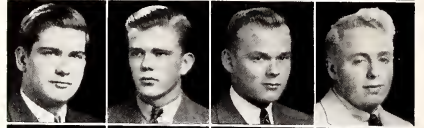
ROY SELS

ALICE SHEPARD
PAULINE SHERBONDY
WILMA SHIVELY



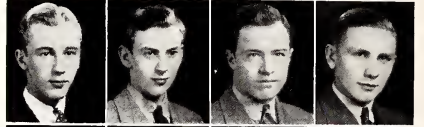
JOHN SIMS

WILLIAM SISSON
CLIFFORD SMITH
DAVID SMITH



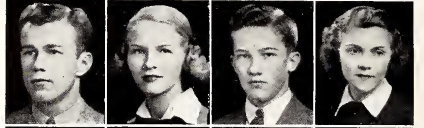
ROBERT SMITH

EDWIN SORENSON
MILLARD SOUERS
WILLIAM SPENGLER



EDWARD SPERRY

MARIANNA STANDER
DAVID STEPHAN
GAIL STEWART



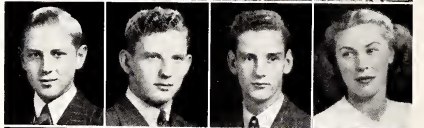
CHARLES STINER

RICHARD STITT
JOANN SWARTZ
JOHN TALLMAN



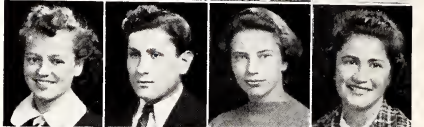
LYLE TAYLOR

WILLIAM TAYLOR
JAMES TIEMANN
BETTY TINNERMAN



MARY TODHUNTER

PATRIC TOTO
MARJORIE TOUCHE
THELMA TRETHERWAY



JOAN VOKES

BETTY WALKER
FRANK WARD
HAZEL WATKINS



HARRIET WATSON

ELIZABETH WEEKS
BETTY JANE WESTFALL
NORMAN WILCOX



MARY ALICE WILLETT

ANNE WILLIAMS
CLYDE WILLIAMS
FRANCES WILLIAMSON

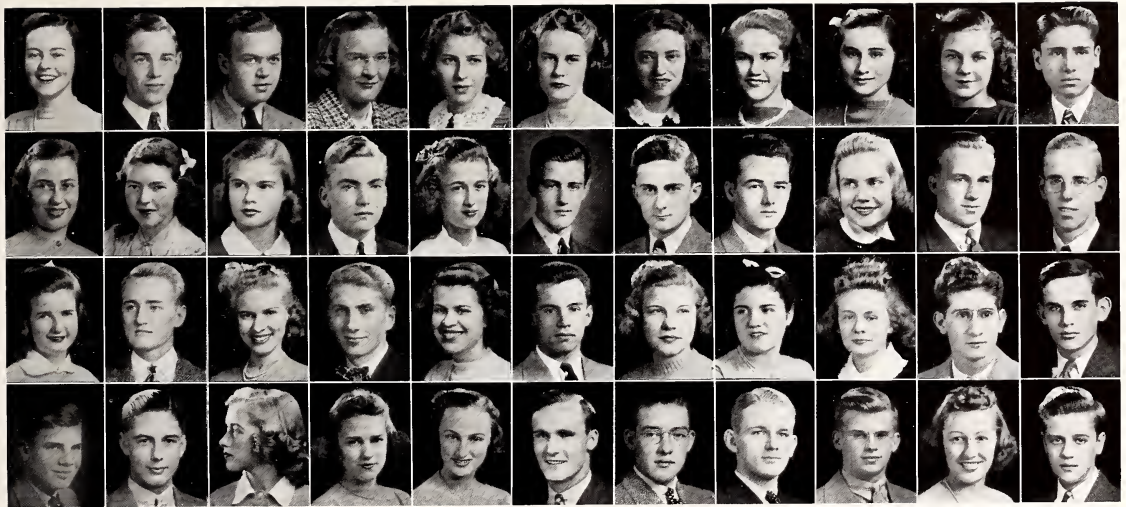


SARA JANE WOODYARD

ANNE WRAY



The Freshman Class of 1943



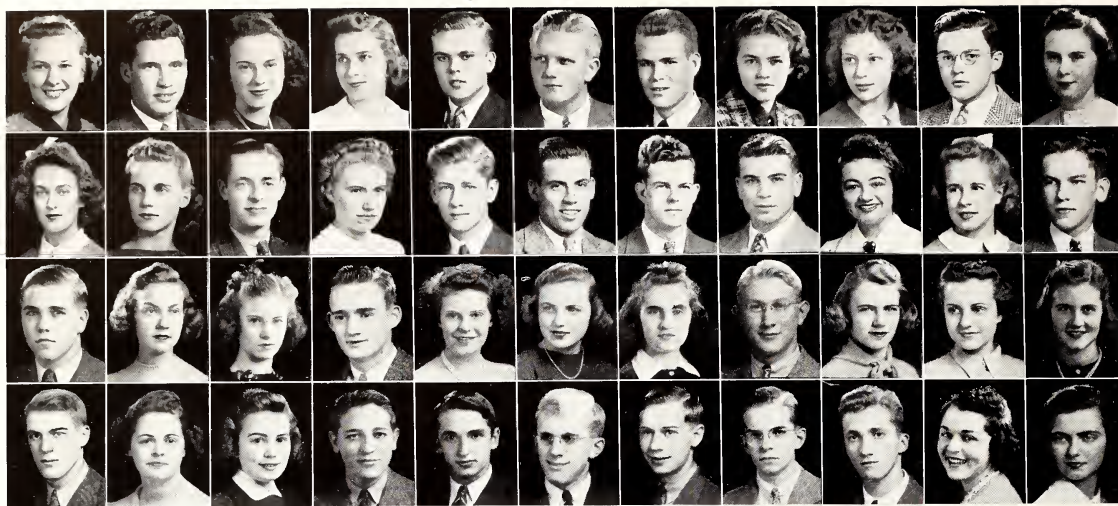
ROW 1: ANTOINETTE ALEXANDER, ROBERT ANDREWS, WILLIAM ANTHONY, KATHRYN ASHINGER, ROBERTA AULT, MARY LOUISE BAR-
NETTE, BETTY BARTH, ANN BARTHOLOMEW, BETTY BECHTOLD, MARY JANE BENSON, FORREST BEERY.

ROW 2: JANE BERMONT, MARJORY BILLOW, BARBARA BJELKE, JACKSON BOYD, NANCY BREECE, BRUCE BRICKELS, ROBERT BRIGGS, GENE
BRIGHT, BETTY BRODE, REX BROPHY, DAVID BROWNE.

ROW 3: JUNE BROWN, WILLIAM BROWNHOLTZ, BARBARA BRUNNER, MAC LAIN BURRIS, IRMA BUSDIEKER, RICHARD BUTTERMORE,
VIRGINIA BYGDEN, CASELLA CALL, ELIZABETH CAMPBELL, JOHN CAVAGROTTI, BOYD CHAMBERS.

ROW 4: ERIC CHILDE, WILLIAM CHIRM, SUE CHRISTENA, CATHERINE CHRISTIE, BARBARA CLATWORTHY, CARL CLENDENING, WALTER
CLOSE, ROBERT COLBY, PAUL CONVERSE, LORRAINE COOPER, DONALD COPPEL.

FRESHMEN



ROW 1: NATALIE COWAN, JOE CRAIG, MARY JANE CRAIG, JEAN CRISP, WILLIAM CROSMAN, JACK CURRIER, GEORGE CURTIN, DOROTHY DALEY, GAIL DAUENHAUER, GRAYBURN DAVIS, MARJORIE DAVIES.

ROW 2: ELIZABETH DAWSON, ELLEN DE BARY, JAMES DECKER, MARTHA DECKMAN, ROBERT DELL, ROBERT DEVEREAUX, ALBERT DICKSON, JOE DI TIRRO, RUTH DOLLE, DOROTHY DONNER, ROBERT DUNCAN.

ROW 3: HOMER EDWARDS, DOROTHY EICHELBERGER, MARCIA ELKINS, JOHN ELLOR, SUELLA ELSTON, ALICE ESCHMAN, ZOE EUVERARD, GEORGE ESTEY, MARGARET EVANS, PEGGY EVANS, JEAN FAHRENBACH.

ROW 4: WARREN FELLABAUM, BEATRICE FENN, JEAN FESSENDEN, BROOKS FIELDS, HAROLD FIFE, ROBERT FLEMING, JAMES FORD, MARTIN FREESE, JOSEPH FRONZAK, LYNDEN FULLER, ADELAIDE GERWIG.

FRESHMEN

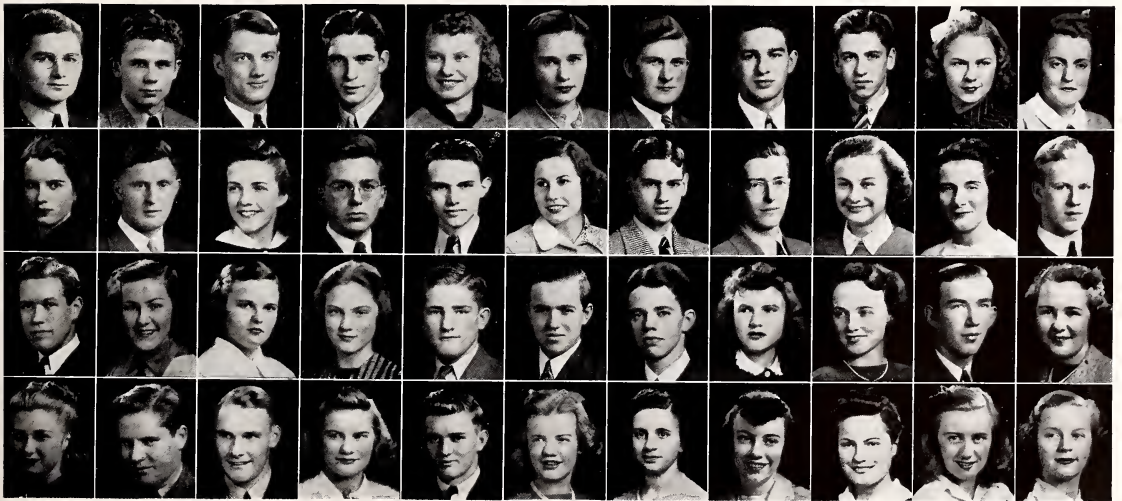
FRESHMEN

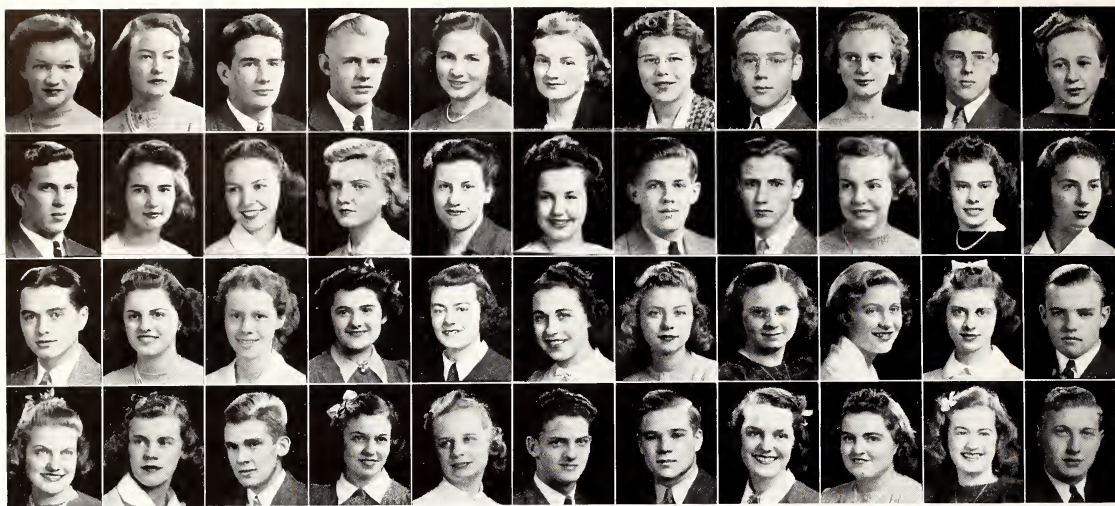
ROW 1: DAVID GIBBS, ROBERT GIBSON, BYRON GOODELL, ROBERT GOODRICH, ELIZABETH GRAM, MARGARET GRATZA, HOWARD GRAY, ROBERT GRAY, ROBERT GRIMM, BILLIE HAARMANN, BARBARA HAGIE.

ROW 2: HELEN HAMILTON, ROBERT HANNAWAY, MARJORIE HARRIS, CHARLES HARRIS, ROBERT HARRISON, MARY HART, EDWARD HARTENIAN, JOE HATTERSLEY, FAYETTE HENCH, BETTE HENNE, WILLIAM HEYWOOD.

ROW 3: FREDERICK HIGINBOTHAM, VIRGINIA HILL, JEAN HINKSON, JOAN HITE, GORDON HOFFMAN, WARD HOLT, EDGAR HOLTZ, LOUISE HOLZER, JEAN HOOPER, WILLIAM HOPKINS, JEAN HORN.

ROW 4: MARY HOUSER, WARREN HOWELL, URBAN HUBONA, MARTHA HUNT, PAUL HYLBERT, CHARLOTTE JOHNSON, LOUISE JOHNSON, MARTHA JOHNSON, ROBERTA JOHNSON, DOXEE JONES, JANE JONES.





ROW 1: MARCELLA JONES, EMILY KING, ALDON KINNEY, JOHN KINNEY, ELIZABETH KISSAM, LOUISE KOEHL, MARILYN KOONS, ROBERT KRIDLER, MARY KREISEL, WALTER LAKE, MARY BELLE LAMBERT.

ROW 2: JAMES LANTZ, BARBARA LEGLER, VIRGINIA LENTZ, MARY LINTHICUM, JANE LOEWENTHAL, GRACE LORIG, HUGH McCULLOCH, JOHN McCUNE, THELMA McKELL, BETTY McMILLAN, BETTY MAESCHER.

ROW 3: TOM MAPES, JEANNETTE MARLOW, SUSAN MARTZ, ANNE MATTHEWS, MARY KAY MEDDAUGH, ARLENE MEIFERT, CONSTANCE MEISNER, FAYE MELICK, BARBARA MILBURN, JOAN MILLER, JOHN MONSON.

ROW 4: MARY LOU MOODY, MARY MOON, RICHARD MORGAN, BETTY MORSE, URA MAE MUNRO, WILLIAM MURTON, JAMES MYERS, SUE MYERS, ELIZABETH NELMS, JANET O'BRYAN, TOM OUIMET.

FRESHMEN

FRESHMEN

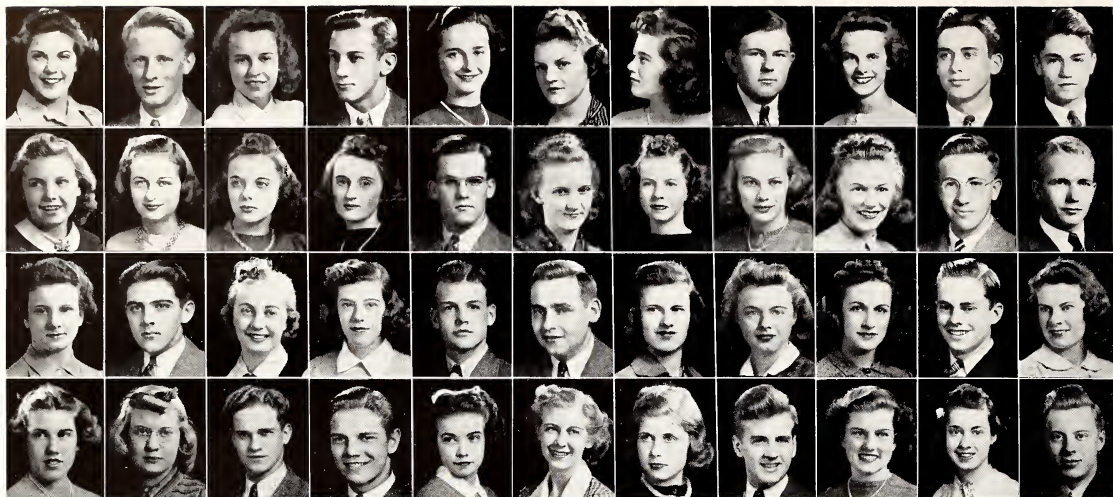
ROW 1: PHILIP OXLEY, JOAN PACE, ROBERT PARKER, MARIAN PARKS, MARTHA PARRISH, JOYCE PATNOE, ROBERT PATRICK, ROBERT PEIRCE, BETTY PEASE, BLANCHE PETERS, RICHARD PETREQUIN.

ROW 2: MARY PHILIPPS, JOSEPH POPAZIVANOV, MARTHA PRATT, JACK PROBST, DICK PROSCH, ELEANOR RAINE, ROSS RANDOLPH, WILLARD RANKIN, PHYLLIS REID, HELEN RHU, JAMES RIDDLE.

ROW 3: STANLEY ROBERTS, GERALD ROBINSON, HOWARD ROBINSON, THOMAS ROBINSON, WILSON ROBINSON, PAIGE ROBY, RUTH ROMMEL, DAVID ROOT, JOAN ROSENTHAL, JOHN RUCKER, AUDREY RUGG.

ROW 4: ROSANNA RUH, FLORENCE SATTEM, DAVID SAUER, ELINOR SCHUBERT, BARBARA SCHUMANN, JOHN SEARLS, ELEANOR SHAW, DOROTHY SHELDON, ANN SHEPARD, ROBERT SIBBISON, MARCELLA SIEPLEIN.





ROW 1: JEAN SIGMIER, PAUL SIVERTSEN, ANN SLAUGHTER, HENRY SLINGERLAND, BETTY SMITH, ELNOR SNEDDEN, ALICE SNOW, FRANK SPARKS, JEAN STARK, EDWARD STEINER, ROBERT STEMLER.

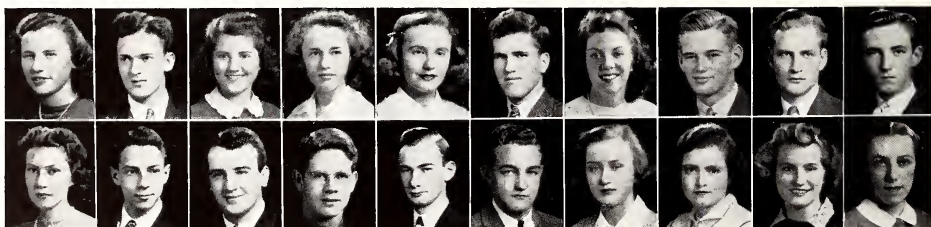
ROW 2: ELOISE STEVENS, GIRVINA STODDARD, LYNETTE STODDARD, PATRICIA STODGHILL, RICHARD STRAITH, AIMEE STUART, JOEHANNA SUFFRIN, JANE SULLIVAN, LOUISE SUTLIFF, JOSEPH SWARTZ, FRANK TAGGART.

ROW 3: BETSY TAYLOR, JACK THIELE, ANITA THOMPSON, BARBARA TIGHT, THOMAS TROUT, DICK TSCHANTZ, JEAN UPHAM, JANE VAN BUREN, MARY VAN NATTA, ROBERT VICKERS, VIRGINIA WEBB.

ROW 4: HELEN WEIANT, LOUISE WEISHAUP, MORTON WEISS, OLIVER WELF, BETTY WELLS, CAROLYN WENDT, RUTH WESTCOTT, FORD WHEELER, PHYLLIS WHELOCK, DOROTHY WHITE, EUGENE WHITE.

ROW 1: MARYLINE WHITE, ARNOLD WIGLE, ROBERTA WILHELM, BARBARA WILLIAMS, DOROTHY WILSON, NORMAN WILCOX, DOROTHY WINANS, RICHARD WINKLER, RAINSFORD WINSLOW, JOSEPH WISE.

ROW 2: MARY LOUISE WOLF, HAROLD WRIGHT, MAX WRIGHT, THOMAS WUICHET, WILLIS WYGANT, CHARLES YOUNG, JOAN YOUNG, LINDSEY YOXALL, JEANNE ZIMMERMAN, BARBARA ZWAYER.



FRESHMEN



A T H L E T I C S



ATHLETICS

football

basketball

spring sports

women's athletics

Football 1940



Front Row: Temerario, line coach, Toto, Le Roy, Marquardt, Giffin, Snider, captain, Blackburn, Schulte, Crawford, Hanna, T. A. Rogers, head coach.
Second Row: West, manager, Johnson, Athey, Dippery, Howard, Bellar, Bar Hoover, Barran, Trautman, Burkhart, Thomas, W. J. Livingston, athletic director.
Third Row: Carl, Ward, Riley, Price, Downs, McCarthy, Swainhart, Jones, Gullett, Seils, Bridge, Norpell, manager.

Board of Strategy



Line Coach Temerario, Captain Snider, Head Coach Tommy Rogers.

Football



Giffin, Barran, Jones.

Crawford, Downs.

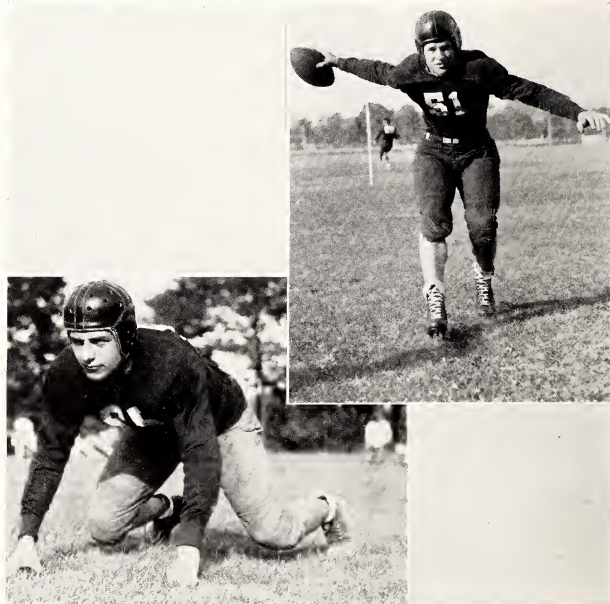
Snider, Schulte, Johnson, Burkhart.

In a season marred by numerous injuries, the Big Red, led by Captain "Moose" Snider, completed an eight game schedule by copping six victories while bowing to Muskingum and Marietta on successive Saturdays.

From a small squad well equipped with veteran linemen, but light in experienced backs, coaches Tom Rogers and "Tim" Temerario molded a team which had great defensive strength and one of the finest passing attacks in the state, but lacked consistent running power.

Eight Denison seniors finished their collegiate grid careers, including linemen Ames Hanna, Howard Crawford, Bob Blackburn, and Jim Schulte, and backs Roy Giffin, Monroe Snider, Gene LeRoy, and Bill Marquardt.

Al Barran and Howard Thomas, junior tackle and guard respectively, were selected as co-captains of the 1940 Denison grid team.



Dippery, Carl.

DENISON 6

Inaugurating the 1939 season, the Big Red served notice of its strength on the Ohio Conference by drubbing the Transylvania Pioneers, 26 to 0.

After a scoreless first period, Denison's attack began clicking, and four touchdowns were scored in the last three stanzas.

Rain during the second half halted a Giffin-to-Burkhart aerial circus and caused fumbles which nullified two touchdown drives.

The Big Red gained 312 yards, including an even hundred by Snider, to 113 for their opponents, while rolling up 16 first downs to seven for Transy.

TRANSYLVANIA 0**DENISON 21**

In the first conference game of the season, Denison trounced Ohio Northern 21 to 12 after a slow start.

With the Polar Bears leading 12 to 0 as the result of two sustained drives, the Big Red launched a second half attack which netted three touchdowns, all the outcome of the Giffin-to-Burkhart passing combination.

Forward passing provided the margin of victory as Denison made only 10 first downs to the Polar Bears' 13 and gained 215 yards to 218 for Northern.

OHIO NORTHERN 12**DENISON 6**

Before a homecoming crowd of 5,000, Denison received its first setback of the year by losing to Muskingum, 20 to 6.

The Muskies, taking advantage of an injury-ridden Big Red eleven, completely stopped the Big Red's running attack and also intercepted six Denison passes. The only D. U. tally came in the third period on a 38 yard pass from Snider to Burkhart.

The statistics show that Muskingum netted 255 yards from scrimmage as compared to 121 for Denison, and 12 first downs to six for the Big Red.

A feature of the day was the reunion of Denison's 1914 gridiron squad, the Big Red's first conference championship team.

MUSKINGUM 20**DENISON 6**

In a deluge of rain and still minus the services of a number of regulars, the Big Red lost its second game of the season to Marietta, 7 to 6.

D. U. was unable to pass, due to the weather, and its running offense was plagued by a total of eight fumbles. Several excursions deep into Marietta territory were stopped by costly fumbles.

MARIETTA 7

The climax of the game came when Giffin attempted conversion after touchdown hit the cross-bar. The final gun went off with the ball on Marietta's four yard stripe.

Denison out-gained the Pioneers 185 yards to 108 and rolled up ten first downs to four for Marietta.

DENISON 3

With odds two to one against them, the Big Red took revenge for a 1938 upset by defeating Wittenberg, 3 to 0. With 40 seconds left to play, Giffin kicked a field goal to provide the margin of victory.

Denison was at its peak in this game. After overcoming a first quarter threat by the Lutherans, they dominated the play for the remaining stanzas.

The Big Red made 268 yards from scrimmage and 12 first downs, while Wittenberg gained 142 yards and had 10 first downs.

WITTENBERG 0**DENISON 13**

Denison chalked up its fifth win of the season by defeating the Oberlin Yeoman, 13 to 7.

The Big Red made a 52-yard-touchdown march in the initial period, but the Yeoman rallied and it was not until the final quarter that Denison tallied the winning touchdown. Burkhart and Snider led the assault which netted the decisive six-pointer.

While gaining 251 yards from scrimmage to 66 for Oberlin, the Big Red rolled up 13 first downs to one for the Yeoman.

OBERLIN 7**DENISON 40**

The Rogersmen sent the Wooster Scots down to defeat for the first time since 1932 before a Dad's Day crowd of 4,500. The score was a lopsided 40 to 6 figure.

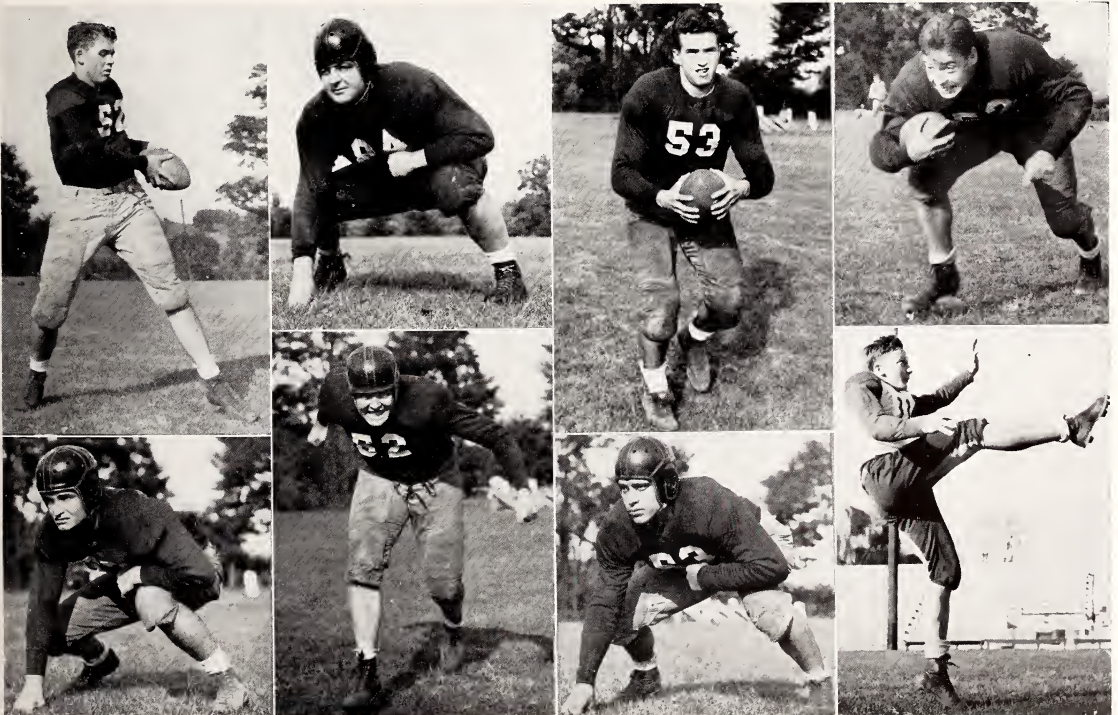
The fray marked 50 years of athletic relations between the two schools, and wrote a finale to Coach L. C. Boles' 25 years of gridiron leadership at Wooster.

Denison's superior offensive power netted six touchdowns, five of which were on passes by Giffin. Defensively, the Big Red held for downs four times within the 25 yard stripe.

The statistics show Denison rolling up 316 yards to 185 for the visitors.

WOOSTER 6

Trautman, Blackburn, Le Roy, Athey,
Hanna, Bellar, Thomas, Marquardt.



Freshman Football



First Row: Kehle, Fields, Di Tirro, Young, Myers, Brophy, Goodrich, Harris, Slingerland, Chirm, Fife.

Second Row: Souers, Pierce, Robinson, Edwards, Hannaway, Wheeler, Robinson, Ellor, Athey, Chambers, Popazivanov.



Basketball



Front Row, Kneeling: Marquardt, Brigham, O. Jones, J. Jones, Orme, Lahm.

Second Row: Johnson, manager, Blake, Harrison, Gosnell, McFadden, Elliott, Stiner, Burkhart, Marquardt, Captain Gordon, Jenkins, coach.

Despite lack of experience, a heavily sophomoric team had the most successful Denison season in over a decade, winning ten contests and dropping nine. Seven of the nine losses were accounted for by two disastrous losing streaks in the middle of the season.

"Ike" McFadden led the Denison scorers, tallying 137 points in 18 games, while Jack Jones and Dale Gosnell were nearest the leader in their totals. The Jenkinsmen garnered 745 points, while their opponents scored a total of 762 counters.

Completing their intercollegiate careers were four Denison seniors; Captain Joe Gordon, Jesse Elliott, Dick Blake, and Bill Marquardt.

DENISON 56

KENYON 35

Getting off to a good start, Denison administered one of the worst defeats in years to an invading Kenyon team, 56 to 35. Never behind, the Big Red turned the game into a near rout with a second half splurge.

O. Jones dumped in ten points and Harrison scored nine.

TOURNAMENT

DENISON 34

HEIDELBERG 25

DENISON 43

OHIO NORTHERN 36

In a tournament at Findlay including Ohio Northern, Denison, Findlay, and Heidelberg, the Big Red lived up to pre-season expectations by winning the championship.

The Granville team knocked Heidelberg from the running 34 to 25 in the first game, with J. Jones racking up eight points and Harrison six. Mean-

while Northern defeated the Findlay contingent, leaving the Big Red and Polar Bears for the final game. With D. U. leading by a slight margin most of the way, a final spurt was put on as the champs defeated Northern 43 to 36. Again J. Jones led with eight points, while Gordon and Elliott each netted six.

DENISON 26

WILMINGTON 31

On an off night, Denison lost its first game to Wilmington, 26 to 31. Leading 11 to 10 at the half, the Big Red went into a slump as the Wilmingtonians accumulated a margin never lost. The only Redman who could find the basket was Red Harrison, whose total was a meager eight counts.

DENISON 46

WILMINGTON 28

Denison's unpredictables again pulled the unexpected and overwhelmed the Wilmington team which had previously beaten them, 46 to 28. After a six-all deadlock midway in the second period, the Big Red took control and during the second half did not allow the Quakers to come closer than 12 points.

Dumping 12 counters through the hoop before the intermission, McFadden totaled 16.

DENISON 24

OTTERBEIN 33

Staging a savage second half drive that turned a close game into a 33 to 24 victory, Otterbein eliminated Denison from the conference's undefeated ranks and averaged two 1938-39 reverses at the hands of the Big Red.

A mere seven points by Sophomore McFadden led the scoring for the Red and White.

DENISON 28

OHIO NORTHERN 43

Gaining revenge for the early season defeat by the Big Red, the Polar Bears of Ohio Northern jumped into the lead at the start of the second half and were never headed. The final count was 43 to 28, with the margin of victory accounted for by accurate free throws by the Bears.

Leading the losing cause was Harrison with eight points.

DENISON 30

WOOSTER 53

Wooster's conference champs of a season ago added another link to the history of their jinx over Denison teams by being the fourth consecutive team to defeat the Big Red. At one time the Scots had a lead of 26 points which the Big Red managed to narrow down enough to make the final score 53 to 30.

Gosnell's 10 counters and Elliott's nine furnished the only bright spots in the Big Red picture.

DENISON 41

MOUNT UNION 38

Sparked by sophomores, Denison registered one of the most surprising upsets in the conference by stopping a fast moving Mt. Union team 41 to 38. A ten point handicap near the half aroused the Baptists to an offensive drive which accumulated 14 consecutive points. This spurt mainly accounted for the victory.

Jack Jones was the big gun of the Denison attack, sinking 12 points.

DENISON 49

OSBERLIN 40

Leading throughout after the first ten minutes of play, the Big Red chalked up their fifth conference

Basketball

victory of the season at the expense of Oberlin, 49 to 40. Close guarding by Gordon and the Jones cousins, coupled with McFadden's three consecutive buckets instilled confidence necessary to whip the seemingly strong invaders.

The diminutive Orval Jones rang up 14 points, mostly long shots from the corners.

DENISON 38 OTTERBEIN 45

A definitely off-form Denison squad lost a second engagement to Otterbein, 45 to 38. A low scoring first half was followed by a fleeting lead, then the Otters completely deluged the Big Red in shots which rang up a lasting margin.

Ike McFadden, who tank eight of ten free throws, paced the pointmakers with 12 counters.

DENISON 32 JOHN CARROLL 38

In a charity game at Newark, John Carroll's high flying Blue Streaks took the measure of the Big Red by a 38 to 32 count. After a fairly even first half, the Jenkismen found themselves unable to stop the long shots of their opponents and never again came within six points of them.

J. Jones with 11 tallies closely followed by Harrison and McFadden accounted for most of Denison's scoring.

DENISON 31 CAPITAL 34

Last minute scores by the Capital cagers dropped a Big Red team for its third consecutive defeat,

34-31 at the Wigwam. The luckless Denison warriors led throughout most of the game, but long shots near the end accounted for the margin of victory. McFadden and Jack Jones were high for Denison with eight and seven points respectively.

DENISON 35 WITTENBERG 46

Able to ring up only seven points during a tragic first half, a ragged Denison team lost to Wittenberg 46 to 35. The Big Red staged a valiant but unavailing finishing rally, but found the 17 point first half margin insurmountable.

Jack Jones led the D. U. hoop totals with ten points, barely nosing out McFadden, Gordon and Elliott.

DENISON 50 MARIETTA 33

After a mediocre first half, an alert Denison ball club rebounded in the second period to whip Marietta 50 to 33. Leading by only four points at the recess, the Big Red aggregation proceeded with unerring accuracy to acquire the highest total they had achieved since the first game of the season.

While Joe Gordon compiled 11 points to lead the scoring, Gosnell racked up 10 in the six minutes he played.

DENISON 36 KENYON 34

In a return encounter with Kenyon, the Big Red five squeezed out a 36 to 34 win. After allowing the Lords three baskets at the start, Denison settled down and sank 17 points while their opponents tallied only a free throw. Twice in the second half

Kenyon was one point ahead, but Denison managed to come out on the long end of the score.

Jesse Elliott paced the Red and White cagers with 10 points.

DENISON 51 OHIO NORTHERN 48

With sophomores notching every point but two, the Redmen completed their home season by winning from Ohio Northern to the tune of 51 to 48. The Polar Bears led until the middle of the second period, when long shots by J. Jones and Gosnell sent Denison into a lead lost only once thereafter.

Gosnell reached the highest scoring effort of the year by accounting for 17 points. McFadden had 12, and J. Jones, 10.

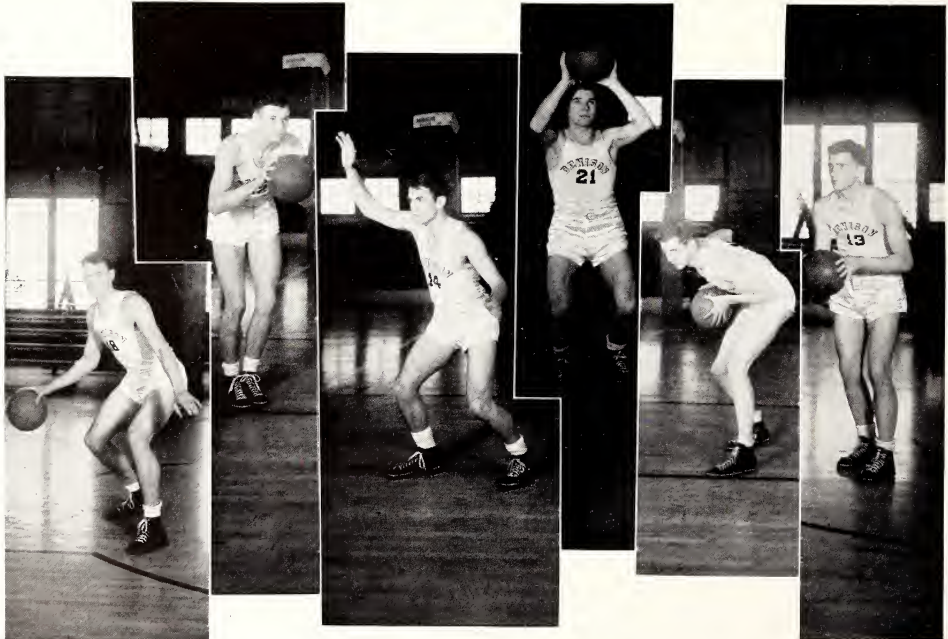
DENISON 40 MUSKINGUM 73

The Big Red did not stack up well against then undefeated Muskingum, and lost 73 to 40 in a game that was a runaway from the start. With the Muskies' five starters each netting two column point totals, the Big Red scoring was fairly even, with Rod Harrison accumulating eight.

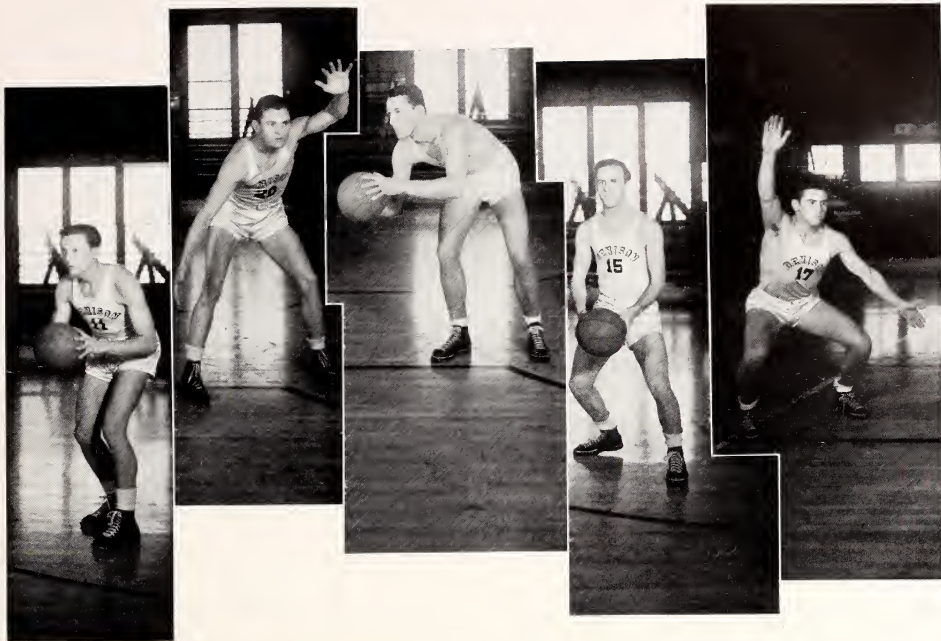
DENISON 55 CAPITAL 49

Winding up their 1939-40 basketball activities, Denison stopped Capital's Paul Weaver, and defeated the Lutherans 55 to 49. After the first eight minutes the Big Red led all the way although never by more than eight points. The complete starting Capital team was evicted from the game via the foul route.

High point honors went to Harrison with eight tallies and McFadden and Elliott with ten and nine respectively.



Blake, McFadden, Jones, Brigham, Gosnell, Elliott.



Marquardt, Captain Gordon, Harrison, Orval Jones, Stiner.

Freshmen Basketball



First Row: Goodrich, Tschantz, Gray, Duncan, Welf, Craig, manager.

Second Row: Thomas, coach, Hopkins, Hubona, Fronczak, Lantz, Hylbert, Barran, coach.

Baseball



First Row: Grabner, McFadden, Collins, Jones, Burkhardt, Podorean, Lahm, Perry.
Second Row: Temerario, Coach, Boggs, Holden, Thomas, Lindstrom, Snider, Blackburn.
Third Row: Johnson, manager; Duncan, Wheeler, trainers; LeRoy, Uhlman, Nygren, Duffy.

Materially revamped and liberally sprinkled with new blood, Denison's 1940 baseball team opened its season with only two men occupying the same positions they held before, but prospects were also the best for several years.

Roy Burkhardt and Chuck Podorean, junior left and center fielders, and Senior Warren Jerry in right gave the Big Red an all-veteran outfield; but Perry was listed primarily as a pitcher during two previous campaigns, although he did double in the garden occasionally.

Ward Lahm, dependable junior, was the only veteran in the infield, and he shifted from his 1939 shortstop position to fill a gap at third. Three sophomores rounded out the infield with "Ike" McFadden at first, Orval Jones at second, and Bob Grabner taking over Lahm's old shortstop post.

Monroe "Moose" Snider, senior handyman, who served stretches at first base, in the outfield and on the mound for two years, went behind the plate to share catching duties on the 1940 team with Howard Thomas, holdover from the year before. Coach "Tim" Temerario also had Senior Bob Blackburn in reserve for receiving assignments.

Frank Collins, slender sophomore righthander, headed a rejuvenated Denison pitching staff rounded out by Don Nygren, another sophomore, and Gene LeRoy, a southpaw senior without previous Big Red experience. Collins made his debut by elbowing a three-hit shutout over Otterbein, Denison winning a 7-to-0 opening game decision from the Otters.

PODOREAN
COLLINS

LAHM

BURKHART

SNIDER

JONES

PERRY

THOMAS

LINDSTROM

Baseball

1940

BLACKBURN
UHLMAN

McFADDEN
GRABNER

Track



First Row: Macomber, Dickson, Reed, Frost, Neuschel, McClanathan, Barran, Price.

Second Row: Livingston, Coach, Nichol, Hanna, Brannon, Laegeler, Oberhelmen, Hanna, Goux, White, Smith, Rogers, coach; Crosman, manager.

Third Row: Baumgartner, trainer; Roddell, Sorenson, Ashley, Harrison, Ward, Taylor, Carl.

Walter J. Livingston's track team turned in an excellent victory account this year in a season which brought some new stars to Livy's enterprise.

Bill Oberhelmen, sophomore dash artist, filled the vacancies made by graduation last year as did Don Ashley, Bob Neuschel, and "Duke" Smith. Earl Brannon proved himself capable as a new relay man while such consistent winners as Joe Dickson, Dick White, Don Hanna and others carried on the veteran's end of the work in expected fashion. Barran, Price and Harrison consistently won first and second places in the field events.

Prominent in this season's track record was a sound spanking which the Big Red administered to the highly touted University of Cincinnati Cinder team.

RILEY



LAEGLER



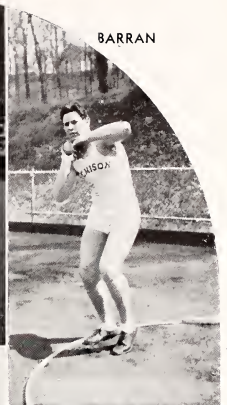
GOUX



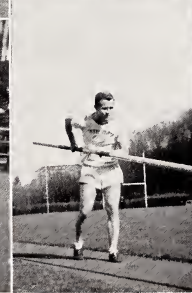
DICKSON



BARRAN



Track 1940



WHITE
NEUSCHEL

BRANNON
MACOMBER
PRICE

HARRISON
TAYLOR
OBERHELMEN

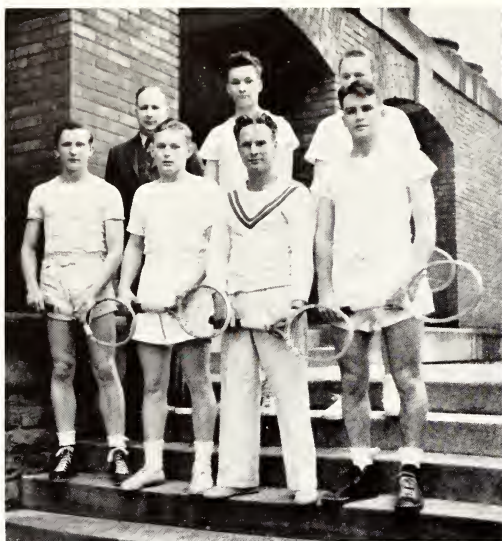
SMITH
CARL

HANNA
FROST
ASHLEY

REED

Tennis

Golf



First Row: Marquardt, Brannan, Blade, Jones
Second Row: Mahood, Coach, Hanna, Maliszewski



First Row: Brigham, Campbell
Second Row: Trautman, Hastings, Stiner

The Sophomore Athletes again contributed fully to Denison inter-collegiate contests as the lists for the golf and tennis teams were announced.

Jack Jones, Ed Maliszewski, Deb Brannon and George Trautman were only a few of those whose pictures are shown above.

The Denison Record in both sports was commendable with the tennis team rising above expectations to turn in a string of victories.

Bill Marquardt and Bill Blade, both veterans of Denison city court competition, tempered the otherwise young tennis team with consistently good tennis.

Intra Mural Champions



Beta—"B" Basketball.
 Kappa Sigma—"A" Basketball.
 Sigma Alpha Epsilon—Speedball.

Phi Delta Theta—Fall Track.
 Phi Delta Theta—Swimming.

Phi Gamma Delta—Swimming
 Kappa Sigma—Volleyball.
 Independents—Blade & Royce—Handball

"D" Association



First Row: Hanna, Carl, McFadden, Johnson, Dipperey, Trautman, Bellar.

Second Row: Duffy, Burkhart, W. J. Livingston, Blake, LeRoy, Wolfe, Temerario, Perry, Blackburn.

Third Row: Dickson, Barran, White, Norman, Wheeler, Nelms, Elliott, Schulte, Riddell, Harrison.

Fourth Row: Richards, Thomas, Kibby, Podorean, Norpell, Price, Downs, Hall, Athey, A. Hanna.

It is the duty of the "D" Association to aid in the instruction of the Freshmen in the traditions of Denison. Moreover, with this group rests the cultivation of good sportsmanship in the grandstands as well as on the playing fields.

Membership in the group, considered an honor by Denisonians in school and alumni as well, is attained by the winning of the athletic award for some inter-collegiate sport.



GENE LeROY, PRESIDENT

W. A. A. Personalities



DIANA
SHUBRUCK

JANET
SHOCK

BETTY S.
WRIGHT

VIOLA
KLEINDIENST

W. A. A.



President
Doris Mandel



First Row: Jeffrey, Wray, Galloway, Kovachy, Mandel, Stoll, Radebaugh, Smith, Krieg.

Second Row: Finley, Slade, Van Horn, Watson, Lancashire, Stilwell, Reynolds, Wright, Matthews, Stratton, Collins, Wallgren.

Functioning under the provisions of a new constitution, the Women's Athletic Association has well performed its purpose of enriching personality through organized sports, dancing, and recreative activities which provide opportunities for the development of leadership and friendship.

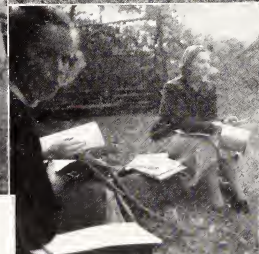
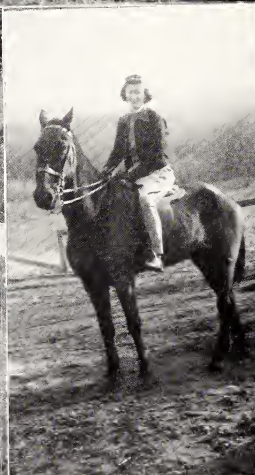
W. A. A. gave a banquet following the close of each sport season, and inaugurated Denison's new Winter Sports Carnival. The W. A. A. Carnival held in the Wigwam on Dad's Day proved to be a great success, as did the popular Gold-diggers Dance at the Women's Gym. W. A. A. also reorganized and added new vigor to Outing Club, formerly called Outing Board.

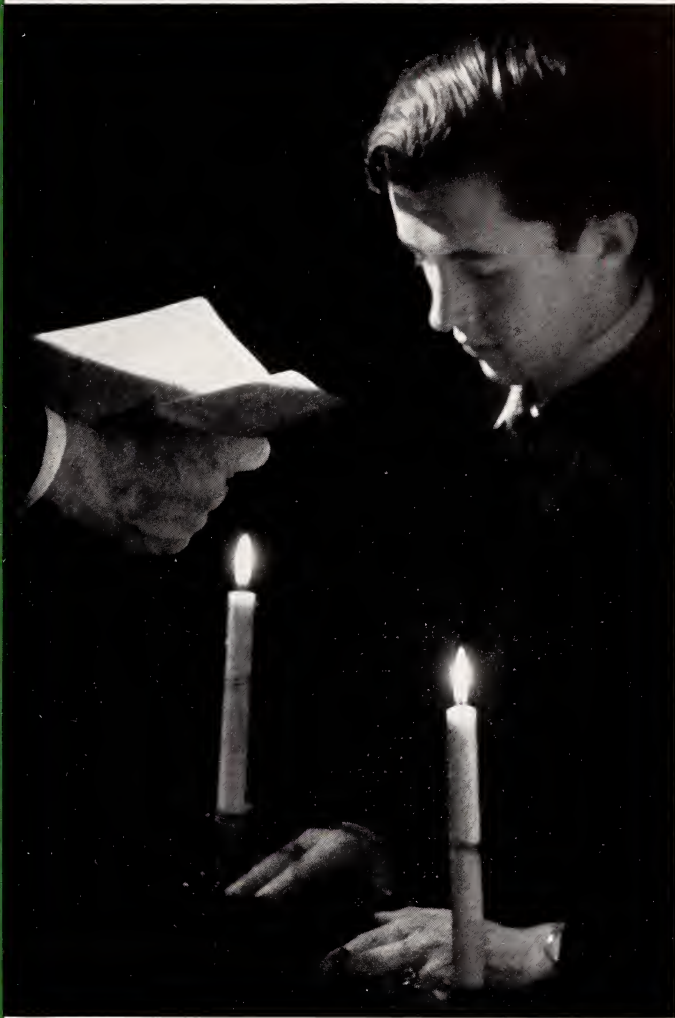
Officers for the year were Doris Mandel, president; Florence Stoll, vice-president; Becky Galloway, treasurer; and Lillian Kovachy, secretary.

The Winter Program



W. A. A. - Fall and Spring





S O C I E T I E S



SOCIETIES

Sigma Chi
Beta Theta Pi
Phi Gamma Delta
Kappa Sigma
Phi Delta Theta
Lambda Chi Alpha
Sigma Alpha Epsilon
American Commons Club
Beta Kappa

+ + +

Chi Omega
Kappa Alpha Theta
Delta Delta Delta
Kappa Kappa Gamma
Alpha Phi
Alpha Omicron Pi
Alpha Xi Delta
Delta Gamma

Fraternity Life — Candidly Speaking



Sigma Chi

FOUNDED

Miami University 1855
Mu Chapter Established 1868
National Chapters, 98

Flower: White Rose

Colors: Blue and Old Gold

OFFICERS

President—Warren Perry
Vice-President—Frank Molen
Secretary—Bob Wolfe
Treasurer—Karl Kloman



Front Row: Sauers, Brownholtz, Holtz, Probst, Devereaux, Prosch, Welf, Duncan, Monson, Curtin, Murton, Sisson, Williams.
Second Row: H. Crawford, Bladell, Bisbee, Wolfe, Randolph, Molen, Perry, Venning, McCollum, Monahan, McIntyre, Mrs. Woodbury, house mother.
Third Row: Robinson, Douglas, Murphy, McClanathan, Tompert, Kloman, Paxton, H. Johnson, Campbell, Owens, McCarty, Hall, Service, Winslow.
Fourth Row: D. Johnson, Gillespie, Brigham, Jones, Orme, C. Crawford, Gullett, Little, Tallman, Spangler, Holden, Athey, E. Campbell, Currier.



Sigma Chi

SENIORS

Clark Bisbee
 Eugene Blasdel
 Howard Crawford
 James McCollum
 James McIntyre
 Franklin Molen
 Frank Monahan
 Warren Perry
 Robert Randolph
 Jack Venning
 Robert Wolfe

JUNIORS

Scott Campbell
 Paul Gillespie
 Richard Hall
 Howard Johnson
 Karl Klomann
 Will McCartney
 Joseph McClanathan
 Willard Owens
 Dick Paxton
 Jack Servis
 James Tompert

SOPHOMORES

Gerald Athey
 Jack Brigham
 Edmond Campbell
 Charles Crawford
 William Douglass
 David Gullett
 James Holden
 Delvin Johnson
 Orval Jones
 Robert Little
 William Murphy
 Arthur Orme
 William Restrict
 William Sisson
 William Spengler
 John Tallman
 Clyde Williams

FRESHMEN

William Brownholtz
 Eric Childs
 Robert Colby
 Jack Currier
 George Curtin
 Robert Duncan
 Charles Harris
 Edgar Holtz
 John Monson
 William Murton
 John Probst
 Richard Prosch
 Gerald Robinson
 David Sauer
 Oliver Welf
 Rainsford Winslow



Beta Theta Pi

SENIORS

Robert Blackburn
 Richard Dixon
 LeRoy Giffin
 Norman Hough
 Eugene LeRoy
 Taylor Mackelfresh
 Willard Marquardt
 James Schulte
 Thomas Shepard
 Monroe Snider
 Samuel Van Voorhis

SOPHOMORES

John Allan
 Franklin Dippery
 Robert Howard
 Frank Irvin
 Jack Jones
 Thomas Landfear
 David Marquardt
 James Moyer
 William Oberhelman
 Hall Packard
 Dudley Roberts
 Richard Stitt
 Lyle Taylor

JUNIORS

Jack Carl
 Edward Deeds
 William Edwards
 Robert Gowdy
 James Hall
 John Herron
 Jack Hoopes
 Thomas Maxwell
 Ira Price
 Emory Richards
 Ralph Scarritt
 Tim Swartz

FRESHMEN

Eugene Bright
 Carl Clendening
 Joseph Craig
 Joe DiTirro
 Jack Eller
 Robert Gibson
 Robert Gray
 Robert Hannaway
 Ward Holt
 Urban Hubona
 James Myers
 David Root
 John Rucker

Beta Theta Pi

FOUNDED

Miami University, 1839
Alpha Eta Chapter Established 1868
National Chapters, 89
Flower: Pink Rose
Color: Pink and Blue

OFFICERS

President—Tom Shephard
Vice-President—Monroe Snider
Secretary—Taylor Mackelfresh, Jim Schulte
Treasurer—Ralph Scarritt



First Row: Rucker, Clendening, Myers, Gibson, Gray, Ellor, Craig, Root, Bright, Packard.
Second Row: Snider, Hough, Mackelfresh, Van Voorhis, Shepherd, Giffin, Blackburn, Schulte, W. Marquardt, Dixon.
Third Row: Holt, D. Marquardt, Herron, Moyer, Dippery, Richards, Hoopes, Oberhelman, Taylor, Gregg, Stitt.
Fourth Row: Shoop, Landfear, Carl, Gowdy, Irwin, Roberts, Sperry, Deeds, Swartz, Jones, Hall, Scarritt.

Phi Gamma Delta

FOUNDED

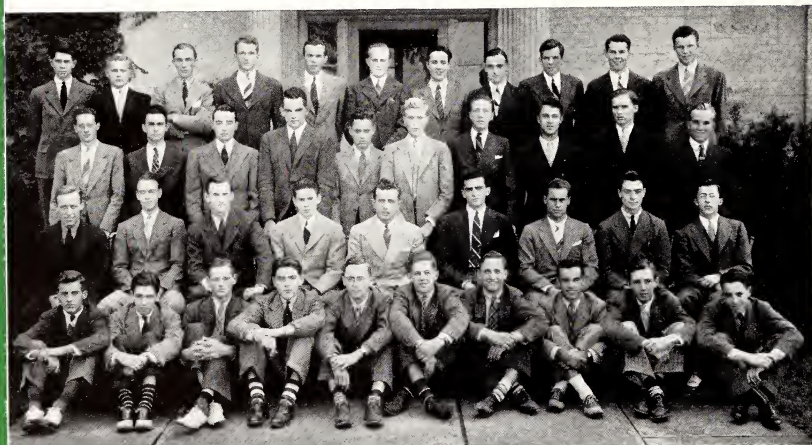
Washington and Jefferson College, 1848
Lambda Dueteron Chapter Established 1885
National Chapters, 73

Flower: Purple Clematis

Colors: Royal Purple

OFFICERS

President—Don Duffey
Secretary—Jess Elliott, William Hassard
Treasurer—John Lindstrom



First Row: Sibbison, Grimm, Winkler, Thiele, Rankin, McCulloch, Petriquin, Buttermore, Wise, Wright.
Second Row: White, Wright, Siegrist, Hassard, Duffey, Elliott, Sheldon, Bethune, Fox.
Third Row: Walker, West, Roehm, Pratt, McGiffin, Norpell, Saxton, Hanford, Flory, Brophy.
Fourth Row: Jones, Brannan, Smith, Ward, Munger, Maliszewski, Minton, Bridge, Horan, Ashley, McFadden.



Phi Gamma Delta

SENIORS

Donald Bethune
Donald Duffey
Jesse Elliott
William Hassard
John Lindstrom
Robert McGiffin
William Sheldon
George Siegrist
Richard White
Robert Wright

SOPHOMORES

Donald Ashley
Delbert Brannan
Richard Bridge
Thomas Fox
Charles Jones
Edward McFadden
Edward Maliszewski
Stephen Minton
George Munger
Robert Smith
Frank Ward
Claude Welles

JUNIORS

David Flory
Thomas Norpell
John Pratt
John Roehm
Frank Saxton
Barton Walker
Raymond West

FRESHMAN

Rex Brophy
Richard Buttermore
Boyd Chambers
Robert Grimm
William Horan
John Kinney
Hugh McCulloch
Robert McKinney
Paul Petrequin
Willard Rankin
Robert Sibbison
Jack Thiele
Richard Winkler
Joseph Wise
Harold Wright



Kappa Sigma

SENIORS

Charles Beardsley
James Black
John Brant
David Carey
Lawrence Curtis
Forest Dean
Wilbur Frost
Ames Hanna
Philip Pierce
William Price
Robert Wiley
Russell Willer

SOPHOMORES

Earl Brannon
Richard Elmer
Robert Hastings
Louis Hick
Jack Murphy
John Nichol
Roger Reed
John Schroeder
James Tiemann

JUNIORS

John Barrington
Robert Brauning
Ralph Drake
John Hammer
Stanley Hanna
Robert Maxwell
Robert Pifer
Frederick Uhlman
Richard Lewitt
David DeLong
William Wilson

FRESHMEN

David Browne
William Chirm
Grayburn Davis
Warren Fellabaum
Harold Fife
Robert Fleming
Robert Goodrich
William Hopkins
Aldon Kinney
Robert Patrick
John Searls
Paul Sivertsen
Dick Tschantz
Robert Vickers
Brooks Fields

Kappa Sigma

FOUNDED

University of Virginia, 1868
Gamma Xi Chapter Established, 1910
National Chapters, 107

Flower: Lily of the Valley

Colors: Scarlet, White, and Green

OFFICERS

President—Phillip Pierce
Vice-President—Wilbur Frost
Secretary—Robert Maxwell
Treasurer—John Brandt



First Row: Wiley, A. Hanna, Willer, Maxwell, Brandt, Beardsley, Pierce, Frost, Dean, Carey, Black, Curtis.
Second Row: Pifer, Wilson, Lewitt, Brauning, Uhlman, S. Hanna, Barrington, Drake, Hick, Calloway, Hammer, Linn.
Third Row: Nichol, Hastings, Reed, Sivertsen, Brannon, Elmer, Murphy, Fellabaum, Schroeder, Chirm, Kinney, Vickers.
Fourth Row: Browne, Ouimet, Popazivanov, Goodrich, Fife, Hopkins, Fleming, Patrick, Davis, Tschantz, Sears.

Phi Delta Theta

FOUNDED

Miami University, 1848
Ohio Iota Chapter Established, 1916
National Chapters, 106

Flower: White Carnation

Colors: Azure and Argent

OFFICERS

President—Al Musal
Vice-President—Dave Taylor
Secretary—John Nelms
Treasurer—Chuck Wheeler



First Row: Anthony, Wuichet, McCune, Lantz, Slingerland, Straith, Oxley, Trout, Wigle, Crosman, Goodell.
Second Row: D. Taylor, Haines, C. Oxley, Collander, Wheeler, Musal, Nelms, Johnson, Nelms, Kibby, Downs, Hanna.
Third Row: Goux, Davies, Mackenzie, Fishell, Sims, W. Taylor, Bellar, Bailey, F. Wheeler, Mapes.
Fourth Row: Anstaett, Souers, Chapin, Smith, McBurney, Grabner, Riley, Trautman, McCarthy, Helferich, Bryson.



Phi Delta Theta

SENIORS

Ned Collander
 Eric Johnson
 Alfred Musal
 Joseph Nelms
 Seth Norman
 Charles Oxley
 Charles Wheeler

JUNIORS

Reid Bryson
 Jack Downs
 Richard Fishell
 Charles Goux
 William Haines
 Willard Kibby
 Donald Hanna
 Robert Macomber
 John Nelms
 David Taylor

SOPHOMORES

Joseph Anstaett
 Stephen Bailey
 Jack Bellar
 Sidney Chapin
 Robert Daview
 Robert Grabner
 Clive Helferich
 Richard McBurney
 Robert McCarthy
 Robert McKenzie
 Jack Riley
 John Sims
 Clifford Smith
 Millard Souers
 William Taylor
 George Trautman

FRESHMEN

William Anthony
 Robert Briggs
 William Crossman
 Homer Edwards
 Joseph Fronczak
 Byron Goodell
 James Lantz
 Thomas Mapes
 John McCune
 Philip Oxley
 Stanley Roberts
 Henry Slingerland
 Richard Straith
 Thomas Trout
 Ford Wheeler
 Arnold Wrigle
 Thomas Wuichet



Lambda Chi Alpha

SENIORS

Bernard Bailey
Gordon Deer
Harry Duffy
Sterling Jewett
Burjo Lamb
James Shryock
Stafford Webb
Gordon Wilson

JUNIORS

Roy Burkhart
Robert Hays
Stiles Jewett
John Moore
Don Purvis
Wilbur Shorts
Howard Thomas
Don Williamson
Don Woodring

SOPHOMORES

Robert Baumgartner
Glen Britton
Robert Branson
Wayne Moore
Phil Pierson
John Place
David Stephan
Robert Swainhart

FRESHMEN

Robert Hartenian
Gordon Hoffman
Walter Lake
Ross Randolph
Wilson Robinson
Gene White
Gene Wilson
Willis Wygant

Lambda Chi Alpha

FOUNDED

Boston University, 1909
Gamma Iota Zeta Chapter Established 1909
National Chapters, 107

Flower: Purple Iris

Colors: Purple, Green, and Gold

OFFICERS

President—Roy Burkhart
Vice-President—Don Williamson
Secretary—Stafford Webb
Treasurer—Burjo Lamb



First Row: Lamb, Jewett, Sterling Jewett, Webb, Burkhart, Williamson, Purvis, Shryock, Hays, Wilson.

Second Row: Place, Stephan, Branson, Pierson, Swainhart, Britton, Shorts, Moore, Woodring, Baumgartner.

Third Row: Wygant, Lake, Wilson, White, Swartz, Wilson, Hartenian, Thomas, Moore, Robinson.

Sigma Alpha Epsilon

FOUNDED

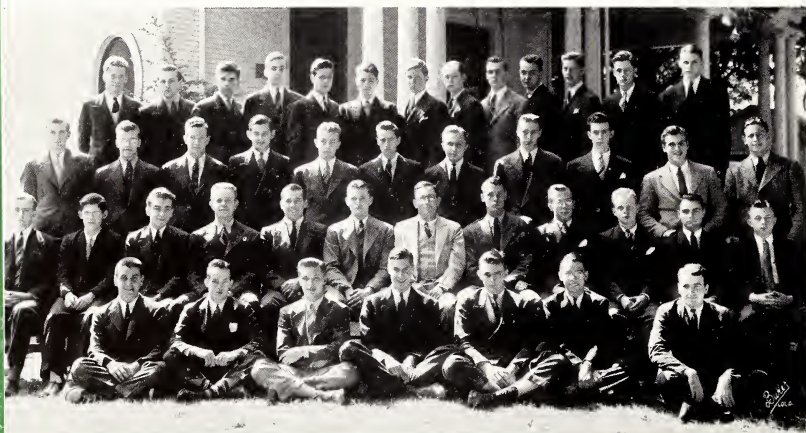
University of Alabama, 1856
Ohio Mu Chapter Established, 1919
National Chapters, 113

Flower: Violet

Colors: Purple and Gold

OFFICERS

President—Joe Gordon
Vice-President—Dick Blake
Secretary—Jack Marshall
Treasurer—Jack Montgomery



First Row: Podorean, Lu'ton, T. Johnson, Nygren, Hylbert, Riddle, Wright.

Second Row: Montgomery, Philipps, Radke, Block, McCrory, Gordon, Crocker, Blake, Bersted, Wilson, Marshall, Robey.

Third Row: Gosnell, Orwig, Humphries, Downing, R. Johnson, Neuschel, Neal, Bowen, Christie, Kehle, Barran.

Fourth Row: Howland, Robinson, Lay, Boyd, Coppel, Stemler, Gray, Decker, Bailey, Young, Dell, Brickles, Harrison.



Sigma Alpha Epsilon

SENIORS

Roger Bersted
Richard Blake
Robert Block
Joseph Gordon
Donald McCrory
Thomas Philipps

SOPHOMORES

Thomas Bowen
Jack F. Boyd
James Christie
Max Downing
Dale Gosnell
Howald Humphries
Ray Johnson
Bert Lutton
Robert Neuschel
Donald Nygren
John Orwig
Robert Robey
Paul Robinson
Charles Stiner

JUNIORS

Taylor Bailey
Alfred Barran
James Howland
Tim Johnson
Jack Marshall
Jack Montgomery
Richard Neal
Charles Podorean
Robert Radke
James Wilson

FRESHMEN

Bruce Brickels
Donald Coppel
James Decker
Robert Dell
Howard Gray
Robert Harrison
Paul Hylbert
Jack Kehle
Robert Kridler
John Lay
Kenneth Larson
James Riddle
Robert Stemler
Charles Young
Max Wright



American Commons Club

SENIORS

Wallace Ault
Merton Barlow
Alphonse Bellavia
Donald Daych
Joseph Dickson
Archie Hudson
David Mandry
Willard Sweeder
Robert Vick

SOPHOMORES

Frank Collins
James DeJute
Clarence Denton
John Dewey
Edward Forest
Raymond Hudson
William Kates
Robert Morlan
George Muench
LeRoy Seils
Patric Toto

JUNIORS

Paul Bar Hoover
Hugh Chittenden
Marvin Cummings
Harley Klepfer
Curtis McKinnie
John Neubert
Spencer Parsons
George Reed

FRESHMEN

Robert Andrews
John Cavagrotti
Paul Converse
Albert Dickson
George Estey
James Ford
Joe Hattersley
Carl Melina
Wilhelm Moll
Robert Peirce
Frank Sparks
Morton Weiss

American Commons Club

FOUNDED

Denison University, 1917

National Chapters, 8

Flower: Moss Rose

Colors: Red and Gray

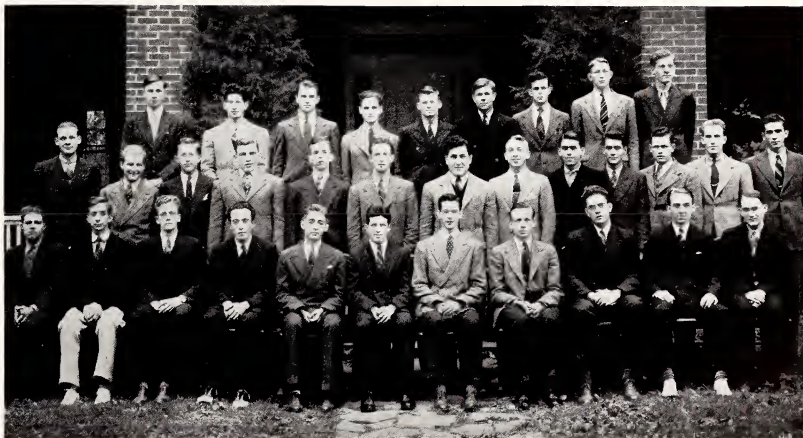
OFFICERS

President—Archie Hudson

Vice-President—Joe Dickson

Secretary—Wally Ault—Harley Klepfer

Treasurer—Paul Barhoover



First Row: Daych, Barlow, Vick, Bellavia, Ault, J. Dickson, A. Hudson, Neubert, Barhoover, Mandry, Cummings.

Second Row: Morlan, Forest, Denton, Seils, McKinney, Reed, Toto, Muench, Collins, Chittenden, Parsons, R. Hudson, Klepfer.

Third Row: Ford, Cavagrotti, Peirce, Weiss, Converse, Sparks, A. Dickson, Estey, Dewey.

Beta Kappa

FOUNDED

Hamline College, 1901
Alpha Iota Chapter Established, 1930
National Chapters, 35

Flower: Red Templer
Colors: Purple and Gold

OFFICERS

President—Ralph Riddell
Vice-President—Franklin Turnbull
Secretary—David Smith
Treasurer—Ward Lahm



First Row: Irwin, Turnbull, Hartley, Lahm, Donovan, Close.

Second Row: C. Innis, Cartwright, Stiner, Mofford, Smith, J. Innis.



Beta Kappa

SENIORS

W. Durwood Hartley
Charles Innis
Ralph Riddell

SOPHOMORES

John Donovan
William Rendall
David Smith

JUNIORS

John Innis
Donald Irwin
Frank Laegeler
Ward Lahm
Franklin Turnbull

FRESHMEN

Dana Cartwright
Merrill Clements
Walter Close
Russell Mofford
Edward Steiner



Chi Omega

SENIORS

Betty Bolin
 Edna Di Domenica
 Sue Homchis
 Mildred Jacob
 Betty Sherwood
 Elizabeth Taylor

SOPHOMORES

Judy Bateman
 Margaret Burnett
 Martha Collord
 Mary Daniels
 Marjorie Larwood
 Elizabeth Myler
 Priscilla Myler
 Marian Scott
 Grace Zimmer

JUNIORS

Elizabeth Deal
 Barbara Killian
 Jean Killian
 Laverne Kulhanek
 Julie Mather
 Betty Slade
 Ruth Smith
 Virginia Straith
 Beverly Thomson
 Ruth Vierling

FRESHMEN

Kathryn Ashinger
 Betty Barth
 Betty Bechtold
 Nancy Breese
 Lorraine Cooper
 Jean Crisp
 Mary Hart
 Martha Hunt
 Urs Mae Munro
 Joyce Patnoe
 Eleanor Raine
 Ruth Rommel
 Betty Smith
 Girvina Stoddard
 Dorothy White
 Roberta Wilhelm
 Barbara Williams

Chi Omega

FOUNDED

University of Arkansas, 1895
Theta Gamma Alpha, 1926
Delta Gamma Chapter, 1928
National Chapters, 92

Flower: White Carnation

Color: Cardinal and Straw

OFFICERS

President—Edna Di Domenica
Vice-President—Elizabeth Taylor
Secretary—Ruth Smith
Treasurer—Betty Sherwood



First Row: Breece, Hart, Stoddard, Patnoe, Cooper, Peters, Ashinger.

Second Row: Bolin, Homchis, Taylor, Di Domenica, Sherwood, Jacob, Kulhanek.

Third Row: Smith, Thomsen, Mather, Slade, B. Killian, J. Killian, Vierling, Straith, Deal.

Fourth Row: Bateman, Collord, Burnett, Williams, Daniels, Howard, Scott, Larwood, E. Myler, P. Myler.

Fifth Row: Barth, White, Webb, Hunt, Rommel, Crisp, Bechtold, Raine.

Kappa Alpha Theta

FOUNDED

DePauw University, 1870

Chi Psi Delta, 1901

Beta Tau Chapter, 1929

National Chapters, 65

Flower: Black and Gold Pansy

Colors: Black and Gold

OFFICERS

President—Betty Williams

Vice-President—Virginia Martindale

Secretary—Betty Taylor

Treasurer—Jane Dorsey



First Row: Winans, Shepard, Zimmerman, Elstun, Parrish, M. Dorsey, Christina, Holzer, Martz, Wells, Ruh, Bjelke, Upham.

Second Row: Lentz, Jones, Evans, Shinn, Sears, Merchant, Williams, Stimmel, Pritchard, Klemm, Martindale, Truesdall, Shepard.

Third Row: Tight, Moon, Johnson, Jeffrey, MacNeill, J. Dorsey, Finley, Gates, Rupp, Smith, Dunlap.

Fourth Row: Greene, Brown, Kohler, Hopkins, Ireland, Hughes, Woodyard, Burgess, Stander.

Fifth Row: J. Brown, Brode, Snow.



Kappa Alpha Theta

SENIORS

Betty Klemm
 Virginia Martindale
 Marjorie Merchant
 Marian Orcutt
 Dorothy Prichard
 Mary Ann Sears
 Mary Shinn
 Betty Lou Stimmel
 Betty Taylor
 Peggy Truesdale
 Betty Williams

SOPHOMORES

Sue Brown
 Anne Burgess
 Marian Burgess
 Mary Dunlap
 Janet Green
 Ann Hopkins
 Lorraine Hughes
 Virginia Ireland
 Mary Frances Kohler
 Mary Pilgrim
 Alice Shepard
 Marianna Stander

JUNIORS

Jane Dorsey
 Barbara Finley
 Jenny June Gates
 Lucille Jeffrey
 Elaine Johnson
 Marjorie McNeill
 Madeleine Rupp
 Jeanne Smith

FRESHMEN

Barbara Bjelke
 Betty Brode
 June Brown
 Sue Christena
 Sue Elton
 Margaret Evans
 Louise Holzer
 Doxee Jones
 Virginia Lentz
 Susan Martz
 Mary K. Moon
 Martha Parrish
 Rosanna Ruh
 Ann Shepard
 Alice Snow
 Barbara Tight
 Jean Upham
 Betty Wells
 Dorothy Winans
 Jeanne Zimmerman



Delta Delta Delta

SENIORS

Betty Braun
 Peggy Coons
 Jeanne deBeauclair
 Barbara Eschman
 Betty Hulligan
 Betty Koos
 Jeanne Sammon
 Beatrice Shaw

SOPHOMORES

Betty Bender
 Marjorie Bruckert
 Doris Burkholder
 Betty Butzman
 Jeanne Chalfant
 Anne Dorsey
 Margaret Hofelich
 Carolyn Metcalf
 Marjorie Richey
 Ruth Roudebush
 Leslie Seagrave
 Betty Tinnerman
 Betty Westfall
 Mary Alice Willett

JUNIORS

Jean Bunje
 Betty Ellis
 Phyllis Finkenbiner
 Meta Gregg
 Virginia Hammerle
 Jane Martin
 Eleanor Pickrel
 Sue Sharkey
 Diana Shuebruk
 Eleanor Shumaker
 Phyllis Stacey
 Betty Jane Wright

FRESHMEN

Doris Burkholder
 Catherine Christie
 Mary Jane Craig
 Marjorie Ann Davies
 Betty Dawson
 Dorothy Donner
 Marcia Elkins
 Alice Eschman
 Jean Fahrenbach
 Jean Fessenden
 Jean Hooper
 Mary K. Houser
 Roberta Johnson
 Marcella Jones
 Betty Maescher
 Mary Lou Moody
 Betty Ann Pease
 Eleanor Shaw
 Dorothy Sheldon
 Ann Slaughter
 Johanna Suffrin
 Louise Sutliff
 Phyllis Wheelock

Delta Delta Delta

FOUNDED

Boston University, 1888

Sigma Delta Phi, 1905

Delta Chi Chapter, 1929

National Chapters, 87

Flower: Pansy

Colors: Silver, Gold, Blue

OFFICERS

President—Jeanne de Beauclair

Vice-President—Betty Hulligan

Secretary—Beatrice Shaw

Treasurer—Jane Martin



First Row: Craig, Davies, Houser, Christie, Sutliff, Sheldon, Jones, Fessenden.

Second Row: Berkholder, A. Eschman, Fahrenbach, Elkins, Moody, Wheelock, Pease, Suffrin, Slaughter, Hooper.

Third Row: B. Eschman, Coons, Hilligan, Braun, deBeauclair, Koos, Samman, B. Shaw, Maescher, Dawson.

Fourth Row: Hofelich, Schumaker, Martin, Bunje, Gregg, Hammerle, Wright, Finkenbiner, Pickerel, Sharkey, Stacey, Ellis.

Fifth Row: Shuebruk, Seagraves, Butzman, Bender, Roudebush, Bruckert, Dorsey, Richie, Hunter, Westfall, Chalfont, Metcalf, E. Shaw.

Kappa Kappa Gamma

FOUNDED

Monmouth College, 1870
Kappa Phi, 1898
Gamma Omega Chapter, 1929
National Chapters, 72

Flower: Fleur de Lis

Colors: Light and Dark Blue

OFFICERS

President—Jean Schaffer

Vice President—Barbara Vorhis

Secretary—Rebecca Galloway, Janet Shock

Treasurer—Ann Lewis



First Row: D. Galloway, Lewis, Stewart, Krieg, McCoy, Watson, Shaffer, Vorhis, Mandel, R. Galloway, Goodwin, Klemm, A. Lewis, Scott, Anderson.

Second Row: Briggs, Richards, Vokes, Ruschli, Sefton, Trebing, Barbour, Gardiner, Wathne, McCornack, Coffman, Armstrong, Kovachy, Johnson.

Third Row: Meisner, Wilson, Schumann, Backus, Craig, Knoop, Eichelberger, Morse, Campbell, Yoxall, Clatworthy, Hinkson, Legler, Gerwig.

Fourth Row: Stark, Sullivan, Billow, Bayrd, Hagie, Roby, Rugg, Myers.



Kappa Kappa Gamma

SENIORS

Rebecca Galloway
 Agnes Goodwin
 Jeannette Kreig
 Helen McCoy
 Doris Mandel
 Jeanne Shaffer
 Janet Shock
 Barbara Vorhis
 Barbara Watson

SOPHOMORES

Joan Armstrong
 Nancy Backus
 Georgia Bayrd
 Bettie Briggs
 Catherine Coffman
 Betty Craig
 Barbara Knoop
 Emily McCornack
 Louise Richards
 Helen Sefton
 Mary Kathryn Scott
 Joan Vokes

JUNIORS

Barbara Anderson
 Priscilla Barbour
 Dorothy Galloway
 Mary Gardiner
 Jean Klemm
 Lillian Kovachy
 Ann Lewis
 Lucy Lewis
 Barbara Ruschli
 Betty Stewart
 Charlene Trebing
 Ellen Wathne

FRESHMEN

Marjorie Billow
 Betty Campbell
 Barbara Clatworthy
 Dorothy Eichelberger
 Adelaide Gerwig
 Barbara Hagie
 Jean Hinkson
 Charlotte Johnson
 Barbara Legler
 Constance Meisner
 Betty Jayne Morse
 Sue Myers
 Paige Roby
 Audrey Rugg
 Barbara Schumann
 Jeanne Stark
 Jane Sullivan
 Dorothy Wilson
 Lindsey Yoxall



Alpha Phi

SENIORS

Alison Ewart
 Ruth Franke
 Mary Jane Gregg
 (1st semester)
 Dorothy Lindaman
 Gloria Matthews
 Macille Mowery
 Judith Radebaugh
 Ruth Shank
 Margaret Sowle
 Florence Stoll

SOPHOMORES

Nancy Bash
 Mary Jane Clark
 Sally Hare
 Mary Ann Hoffhine
 Margie Howells
 (1st semester)
 Helen Jaworski
 Viola Kliendienst
 Barbara Love
 Lillian McFadden
 Sue McKee
 Patricia Mitchell
 Shirlee Muth
 Marjorie Touche
 Ann Wray

JUNIORS

Elise Bonnet
 Betty Foster
 Margaret Jean Izant
 (1st Semester)
 Eleanor Howlett
 Eleanor Nebel
 Jean Preston
 Betty Rowe
 Camille Skalak
 Constance Stilwell
 Betty Jane Stratton
 Virginia Sweet

FRESHMEN

Mary Jane Benson
 Dorothy Daley
 Beatrice Fenn
 Fayette Hench
 Emily King
 Barbara Milburn
 Janet O'Bryan
 Phyllis Ann Reid
 Mary Van Natta
 Marjorie White

Alpha Phi

FOUNDED

Syracuse University, 1872

Phi Phi Phi, 1921

Beta Kappa Chapter, 1930

National Chapters, 37

Flowers: Forget-Me-Not and Lily of the Valley

Colors: Silver and Bordeaux

OFFICERS

President—Macille Mowery

Vice-President—Judy Radebaugh

Secretary—Ruth Shank

Treasurer—Connie Stilwell



First Row: Sweet, Skalak, Reid, Benson, Milburn.

Second Row: Nebel, Franke, Sowle, Matthews, Radebaugh, Mowery, Shank, Gregg, Lindaman, Ewart, Izant.

Third Row: Kliendienst, Preston, Stratton, Foster, Hare, Jaworski, Walkers, McKee, Howells, Clark, Love, Bonnet, Mitchell, Stilwell.

Fourth Row: Howlett, Rowe, Hoffhine, Muth, Hench, White, King, VanNatta, O'Bryon, Daley, McFadden, Wray.

Alpha Omicron Pi

FOUNDED

Barnard College, 1897
Alpha Tau Delta, 1927
Alpha Tau Chapter, 1930
National Chapters, 49

Flower: Jacquiminot Rose

Color: Cardinal

OFFICERS

President—Sue Morrison
Vice-President—Elizabeth Van Horn
Secretary—Jeanne Bahr, Helen Evans
Treasurer—Mary Ernestine Smith



First Row: Walker, Needham, Weeks, Van Horn, Bahr, Morrison, Evans, Smith, Blair, Brown.

Second Row: Marlowe, Ramsower, Lewis, Root, Cockerill, Buchanan, Reynolds, Lundy, Van Horn, Pullis, Lay.

Third Row: Boggs, Haarman, Matthews, Bruce, Atwater, Meddaugh, Belmont, Deckman, Ford, Dann.



Alpha Omicron Pi

SENIORS

Jeanne Bahr
Helen Evans
Susanne Morrison
Elizabeth Van Horn

SOPHOMORES

Mary Atwater
Charlotte Boggs
Carolyn Bruce
Doris Gregg
Anne Lewis
Helen Needham
Myrle Pullis
Isabelle Ramsower
Brinca Root
Pauline Sherbondy
Betty Walker
Elizabeth Weeks

JUNIORS

Mary Blair
Shirley Brown
Lois Buchanan
Jane Cockerill
Dorothy Dann
Ruth Ford
Mary Virginia Lay
Doris Lundy
Mary Jane Reynolds
Mary E. Smith
Edith Van Horn

FRESHMEN

Jane Bermont
Martha Deckman
Billie Jean Haarman
Jeannette Marlowe
Anne Matthews
Mary Kay Meddaugh
Lynette Stoddard



Alpha Xi Delta

SENIORS

June Ammon
Elinor Evensen
Elnora Wheeler

SOPHOMORE

Mary K. Adams
Mildred Kornman
Thelma Trethewey

JUNIORS

Betty Boughner
Katherine Collins
Lillian Grimm
Ann Wiley

FRESHMEN

Gail Daeunhauer
Helen Hamilton
Louise Johnson
Mary Jane Kreisel
Grace Lorig
Jane Loewenthal
Betty McMillan
Marcella Sieplein
Margaret Westcott

Alpha Xi Delta

FOUNDED

Lombard College, 1896
Delta Psi, 1930
Beta Delta Chapter, 1931
National Chapters, 56

Flower: Rose

Colors: Double Blue and Gold

OFFICERS

President—June Ammon
Vice-President—Elinor Evensen
Secretary—Lillian Grimm, Mary K. Adams
Treasurer—Betty Boughner



First Row: Grimm, Ammon, Ralston, Wheeler, Evensen.

Second Row: Wiley, Boughner, Sieplein, Johnson, Hamilton, Macmillan.

Third Row: Dauenhauer, Kreisel, Lorig, Adams.

Delta Gamma

FOUNDED

Louis School, 1872
Beta Zeta Colony, 1939
National Chapters, 57

Flower: Cream Rose

Colors: Bronze, Pink and Blue

OFFICERS

President—Jane Bartholomew
Vice-President—Dorothy Rhoton
Secretary—Ruth Baldwin, June Freer
Treasurer—Kathryn Bottomley



First Row: Koncana, Jones, Rea, Watkins, Rhoton, Westcott, J. Bartholomew, Bottomley, Welcher, V. Schubert, LeRow, Christian, Koehl.

Second Row: Cowles, Craig, Freer, English, Dayhoff, Puffer, Graves, Stewart, Shively, H. Watkins, Watson, Baldwin, Williamson.

Third Row: Ernest, Phillips, Wendt, McKell, Alexander, Brunner, E. Schubert, Young, R. Westcott, Pace, Parks, A. Bartholomew, Barnette, Rhu, Miller.



Delta Gamma

SENIORS

Jane Bartholomew
 Kay Bottomly
 Winifred Sackett
 Marion Welcher
 Priscilla Wescott

SOPHOMORES

Ruth Baldwin
 Jerry Cowles
 Rita Dayhoff
 Betty English
 June Ernest
 Jacqueline Graves
 Harriet Puffer
 Wilma Shively
 Gail Stewart
 Hazel Watkins
 Harriet Watson
 Frances Williamson

JUNIORS

June Christian
 Carolyn Craig
 June Freer
 Winifred Jones
 Jean Koncana
 Sue LeRow
 Bebe Phillips
 Sally Rea
 Dorothy Rhoton
 Virginia Schubert
 Violet Wallgren
 Phyllis Watkins

FRESHMEN

Antoinette Alexander
 Mary Louise Barnette
 Ann Bartholomew
 Barbara Brunner
 Jean Horn
 Louise Koehl
 Thelma McKell
 Joan Miller
 Joan Pace
 Marian Parks
 Helen Rhu
 Elinor Schubert
 Carolyn Wendt
 Ruth Wescott
 Joan Young

"At Ease"



DENISON AT REST

Bender in a box . . . And so to bed . . . Stinky studies . . . Bartholomew beckons beautifully . . . Knoop has 'it' . . . The Beta dwarfs at work . . . Freshmen are strict conformists . . . Bill poses—Joe shuns publicity . . . is this strip poker? . . . Chilli gets real romance . . . the Kappa Kids . . . women only . . . even the Senior Bench is strained . . . ostriche act . . . Ah, that glamorous glance . . . B. W. O. C.'s . . . don't hide, we all like picnics . . . Bender loves cemeteries . . . and watch the food go up in smoke . . . Peg races Marge to class . . . blond specimens at ease . . . Joe and those fast-color hats . . . the farmer's daughter . . . definitely no harm done.



ORGANIZATIONS



CONTENTS

the honoraries

the musical

the publications

Phi Beta Kappa



FACULTY MEMBERS

F. Dewey Amner
Millard Brelsford
L. Richard Dean
Frederick G. Detweiler
Karl H. Eschman
W. Alfred Everhart
Donald R. Fitch
Eva R. Fitch
Burt T. Hodges
Richard H. Howe
Alfred J. Johnson
J. L. King
Marie E. Lein
Thomas A. Lewis
Ernie N. Loughridge
Freeman D. Miller
August Odebrecht
Helen Olney
Elizabeth Thomas Owen
Ames Pierce
Albert A. Roden
Avery A. Shaw
Eri J. Shumaker
Mrs. Alma B. Skinner
Malcolm E. Stickney
John G. Turnbull
Valeria Wells
Frank J. Wright



FACULTY WIVES

Mrs. F. Dewey Amner
Mrs. Sam Gelfer
Mrs. Linn W. Hattersley
Mrs. Horace King
Mrs. George D. Morgan
Mrs. Albert A. Roden
Mrs. Thomas Rogers
Mrs. Henry J. Skipp
Mrs. Brayton Stark

STUDENT MEMBERS

Class of 1940

Virginia Jones
William James Price
Lawrence Wilford Curtis
Jeanne Irene de Beauclair
Barbara May Eschman
Charles Lewis Oxley
Mary Elizabeth Sherwood
Robert Edward Wolfe
Robert James Wright

Class of 1941

Reid Allen Bryson
William Edward Deeds
Lillian Russell Grimm
Stanley Sweet Hanna
Jane Reeves Martin
Thomas Edmiston Norpell
Marcia Elizabeth Sipple

CHAPTER OFFICERS

President.....Karl Henry Eschman
Vice-President.....Richard Harris Howe
Secretary-Treasurer.....William Alfred Everhart

Mortar Board



President, Florence Stoll

First Row: Bartholomew, Stoll, deBeauclaire, Mandel.

Second Row: Eschman, Sherwood, Shaffer, Klemm.

Mortar Board, the highest award for senior women outstanding in scholarship, leadership, and service was led this year by Florence Stoll. Formerly Cap and Gown, this chapter became a member of the National Mortar Board in the spring of 1936.

For the second year, Mortar Board has forwarded Denison scholarship by sponsoring a Tutoring Bureau which has functioned with great success. Bigger and better than ever before was the Mortar Board Scholarship Dinner. Its purpose was to honor all Freshmen, Sophomore, and Junior women who made a 1.6 average, or above, at semesters.

Other officers assisting Florence Stoll were Betty Klemm, vice-president; Jeanne deBeauclair, secretary; Doris Mandel, treasurer; Jane Bartholomew, editor; and Barbara Eschman as social chairman.

Omicron Delta Kappa



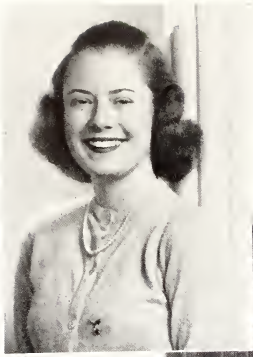
Bailey, Bethune, Wolfe, Lindstrom, Beardsley, Eschman, Kibby, Bjelke, Richards, Mahood, Wright, B. Wright, Skriletz. President Charles Beardsley.

Omicron Delta Kappa, Senior men's national honorary, was the host to Province Convention of the fraternity last April. At this time representatives from Akron, Ohio Wesleyan, Miami, Cincinnati and Centre College attended the conclave. Omicron Delta Kappa backs all worthy projects and attempts to benefit Denison in every possible way.

The membership of Alpha Mu Circle of O. D. K. is chosen from the men of the Junior and Senior classes on a basis of leadership in at least one of the following phases of campus life: Scholarship; athletics; leadership in social and religious activities; publications; and forensic, dramatic, musical, and other cultural activities.

This year Omicron Delta Kappa was led by Charles Beardsley who was assisted by Monroe Snyder, vice-president; Dr. Frank J. Wright, secretary; John Lindstrom, treasurer; and Dr. Lionel Crocker as faculty adviser.

W. S. G. A.



President, Betty Sherwood

First Row: Craig, Lewis, Stewart, Shumaker, Watson, Klemm, Sherwood, deBeauclaire, Shock, Nebel, Rupp, Sharkey, LeRoy.

Second Row: Deane, Stoll, McCoy, Bruckert, Foster, Schubert.

For many years Women's Student Government Association has been a vital part of the Denison campus. This year brings the culmination of the organization but its influence will still be felt in the new Denison Student Government Association.

The Big Sister system which has proved so successful on the campus, the General Jam, and the dance which followed were important fall projects of the Association. Since the students were not granted a Thanksgiving vacation this year, the Council worked with the faculty, M. S. G. A. and other organizations in planning a program of entertainment for Thanksgiving Day and the following week-end.

Betty Sherwood, president; Betty Klemm, vice-president; Barbara Watson, chairman of house presidents; and Jeanne deBeauclair, head of judiciary were officers of W. S. G. A.

M. S. G. A.

"Political doctrines pass but humanity remains." Thus The Men's Student Government of Denison has drifted into the realm of the past. The end of the M. S. G. A. is the beginning of a new era of representative student government at Denison. Due to the untiring efforts of M. S. G. A., the new student government, The Denison Student Government Association is now backed by a Student Constitution.

Other projects for the year were the football and basketball banquets given in honor of the respective squads. The members of the track and baseball teams along with the Denison Band have also been feted.

This year M. S. G. A. was led by Joe Gordon, Charles Beardsley and Bernard Bailey. These men were ably assisted by various and sundry committees too numerous to mention.



President Joe Gordon

Macomber, Bailey, Gordon, Beardsley, Burkhart. Standing: Moore, Kibby.

Interfraternity Council



Turnbull, McClanathan, Duffey, Price, Shepard, Perry, Hudson, Pierce, Riddell, Norpell, Parsons, Marshall, Hanna, Warren Perry, President.

The purpose of the Interfraternity Council is to further the general welfare and to promote the common interest of all academic fraternities at the University. This is achieved by assuming the responsibility of the rushing procedure, by fostering a system of interfraternity Freshmen Exchange, and by sponsoring Interfraternity Smokers throughout the year. Moreover, the Council stimulates scholarship by offering a cup to the leading fraternity at the end of the semester, and settles all problems on the campus pertaining to unified fraternity life.

The Council proposed a plan acceptable to the University whereby many of the problems connected with the new Freshmen Men's Dormitory have been settled between the college and the fraternities. Officers for the year were Archie Hudson, president; Warren Perry, vice-president; Phil Pierce, secretary, and Ralph Riddell, treasurer.

Pan-Hellenic



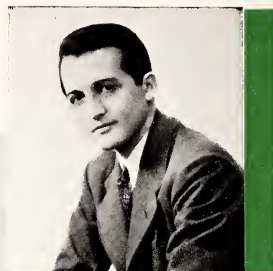
President Jean Shaeffer.

Deal, Craig, Lundy, Bahr, Ammon, Pickrel, Sackett, Shaeffer, Finley, deBeauclair, Merchant, Matthews, Rowe, Wheeler.

The Pan-Hellenic Council has aided materially in furthering democratic relations among the various sorority groups on the Denison campus. Each sorority is represented by three delegates to the Council, making a total of twenty-four members in all.

The Council's greatest job on the campus is the regulation of rushing, a task which they completed in a most successful manner. Under the sponsorship of the Council, Freshmen Pan-Hellenic Teas, Pan-Hellenic Informals, a Pan-Hellenic Banquet, and an Inter-Sorority Sing were held. Officers of the Council were Jeanne Shaeffer, president, Betty Rowe, vice-president; Jane Cockerill, secretary; and Lillian Grimm, treasurer.

Blue Key



President Bob Wolfe

Skrlitz, Norpell, Turnbull, Scarritt, Kibby, Maxwell, Kломann, Jewett, Brandt, Musal, Wolfe, Bjelke, Lindstrom.

Denison's Blue Key Fraternity is composed of two members from each fraternity—one junior and one senior—who have been outstanding in campus leadership. It meets every two weeks at noon as a luncheon group at the various fraternity houses.

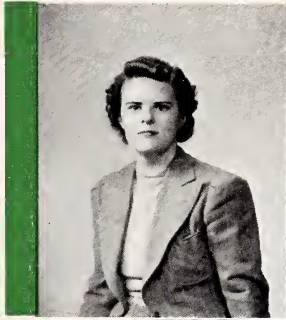
Blue Key's main contributions to Denison campus life are the direction of the Homecoming program, Dad's Day and the "Skit Scraps". The "Skit Scraps" were something new to Denison students, providing an opportunity for novice writers, producers and actors to match their skill against other fraternity and sorority groups. A cup was presented to the fraternity and sorority producing the best skit.

Robert Wolfe served as president, with Alfred Musal, vice-president; John Brant, secretary; and Sterling Jewett, treasurer. New members were tapped during a chapel program on March 25.

Crossed Keys

Crossed Keys was formed as an honorary for Junior women distinguished in activities and attitude. New members are tapped late in the Spring of their Sophomore year. The present roster shows a membership of 14, including President Madeline Rupp, Treasurer Sue Sharkey and Secretary Eleanor Nebel.

The organization has had a successful and active year in sponsoring several events new to the students of Denison. Among these were the Junior Exchange Dinners, the Homecoming Decoration Contest for sorority houses, and the joint sponsorship with Mortar Board of the All-Denison Dance held in the Women's Gym in November. In addition, Crossed Keys provided ushers for the May Day celebration on Mother's Day, and made the Senior Daisy Chain for Class Day.



President Madeline Rupp.

First Row: LeRoy, Lewis, Schubert, Sharkey, Kovachy, Rupp, Nebel, Kulhanek.

Second Row: Smith, Shumaker, Stewart, Bonnet, Craig.

Y. W. C. A.



First Row: Bonnet, Galloway, Eshman, Orcutt, Gregg.

Second Row: Kulhanek, Ryan, Ewart, Shank, Franke, Martin, English.

Third Row: Cowgill, Matthews, Lewis, Ramsower, Pickrel, Rupp, Shumaker.

President Barbara Eschman guided Y. W. C. A. through the year to a stronger and more outstanding place on the Denison campus. The highlights of this year's program included active social work with a group of underprivileged girls in Newark, Heart Sister Week which climaxed a period of good deeds and mystery with a banquet, Religious Emphasis Week featuring Dr. Clausen, who spoke in Chapel and forums, and the successful Christmas Bazaar. These and other activities have centered around the theme "Widen Your World."

Many helpful conferences were attended by different members of the group, and a great deal of work was done in cooperation with other campus organizations. Considerable effort was made this year to include more members in the various activities of the organization.

Y. M. C. A.

Many of the outstanding events which have taken place on the Denison campus during the past year were due to the sponsorship of Y. M. C. A. The first Freshmen Debate Contest was held in November, with each fraternity represented by a team of two men. Another new feature, the interfraternity quartet sing, took place in December. The year was started off with the annual Freshmen camp, which proved to be a great success.

One of the most popular features of the Y. M. C. A. proved to be student Chapel speakers. Ira Price, Willard Kibby, Jerry Cowles, James Shulte, Howard Johnson, and Charles Harrison were among the students who spoke. Religious Emphasis Week was carried on with the aid of Y. W. C. A., Dr. Clausen proving to be a very stimulating speaker.



First Row: Moore, Hudson, Kibby, Podorean. Second Row: Mackelfresh, Ault, Maxwell.



Math Club

Front Row: Echman, Bartholomew (?),
Wolfe, Stacy, Price, Zimmerman.

Second Row: Cowan, Smith, Elstun, Call,
Crisp, Mackenzie, Dr. Wiley, Dr. Kato.

Third Row: Horan, Deeds, Converse,
Hudson, Close, Grimm, Martz, Mar-
low, Stuart, Todhunter, Rupp.



Geology Society

Front Row: Curtis, Innis, R.
Wright, F. Wright.

Second Row: Blade, West,
Bryson, Reed, McClanathan,
Baumgartner.

President Bob Wolfe has led the Math Club through another successful year of active student interest in the mathematical sciences.

New methods of analysis and problem development were demonstrated and explained by faculty members. Students conducted research and gave reports on contemporary methods of mathematical procedure.

The C. L. Herrick Geology Society has actively sponsored interest in geology among the Denison student body under the leadership of President Bob Wright. Guest speakers, student reports, and faculty lectures gave the group a well balanced program. A Spring picnic to Black Hand Gorge provided an opportunity for actual strata study.

Denison Universtiy Band



Through the increasing efforts of its leaders, the Denison Band has had one of the most successful seasons in its history. The marching band contributed enormously to the pep and spirit displayed by the Denison rooters during the football and basketball seasons, and the concert band, which is formed after the football season, is possibly the best we have ever had.

Under the drilling of Drum Major Bernard Bailey, the band gave a colorful display of marching during the half period of each home football game and the formations were as effective as they were intricate. Art Huff and Bill Hite ably led the concert band in preparations for a concert given in the Spring.

At the annual Football Banquet, Frank Laegler, Stanley Hanna, Paul Gillespie, Bernard Bailey and Ed Deeds received their band letters. To win a band sweater, one must attend the band for two years and three football seasons, with no more than three excused absences per semester without missing a single game or other performance.



Art Huff, Director

The Women's Glee Club

Throughout the course of the year, the Shepardson Glee Club has many opportunities to utilize its talent. The first part of the year was devoted to practice, but with the coming of the second semester, concerts in neighboring cities, local churches, and student chapel services occupied the program. The highlight of the year's program was the annual Spring Vacation trip.

This year the trip included concerts at Buffalo, New York and Parkersburg, West Virginia. In April the Club gave its home concert in Recital Hall. The finale to the year's program was the Mother's Day-May Day Celebration in which the Club helped in the May Queen crowning festivities. In the evening of the same day the Women's Club in conjunction with the Men's Club gave a concert to honor the Denison mothers.

This year's officers for the club were: Student Conductor, Madeleine Rupp; and Priscilla Westcott, Business Manager.

Denison Glee Club

From "tails" to "tux" and back to "tails", from moustache and beard to smooth shave, the generations of Glee Men have sung at Denison, a college known for student singing at fraternity tables and in campus serenades. The type of music presented in the club's programs through these fifty seven years reveals the history of rising standards and improved taste, not only of the singers but of their audiences. From "Bull-frog on the Bank" to Johann Sebastian Bach is quite a journey yet it represents the development of male choral singing in many colleges.

For the past ten years the director of the club has been Karl H. Eschman, director of the Conservatory. The student officers this year are: Don Bethune, Leader; Al Musal, Manager; and Harry Townsley, Assistant Manager.

Women's and Men's Glee Clubs



WOMEN'S GLEE CLUB

First Row: Boggs, Donner, Dorsey, Rupp, Seagraves, Grimm, P. Westcott, Cowgill.
Second Row: Briggs, P. Myler, Johnson, Shepard, Eschman, Tringa, Swartz, Sieplein.
Third Row: Daniels, Howard, Meddaugh, Atwater, Sipple, Vierling, Mather, Huff.
Fourth Row: E. Myler, Wathne, Rhoton, E. Schubert, Jacobs, Cowan, Hooper.
Fifth Row: O'Bryan, Milburn, Matthews, Hoffman, R. Westcott, Jeffrey, B. Eschman.

MEN'S GLEE CLUB

First Row: Townsley, Purvis, Hough, Bethune, Musal, Wright, Royce, Sheldon.
Second Row: Gregg, Root, Moyer, Seigrist, Straith, Petrequin, Grimm, Smith.
Third Row: Trout, Higgenbottom, Lutton, Wyman, Brannan, Munger, W. Moore, White.
Fourth Row: Craig, Sorenson, Wheeler, Hick, J. Moore, Converse.

Symphony Orchestra



The Denison Orchestra, composed entirely of students and faculty members, has developed during the past year into a symphonic body capable of effectively performing intricate and advanced compositions. Sam Gelfer proved to be an efficient and hard-working concertmaster, and Karl Eschman did his usual fine job as conductor.

Accompaniments were furnished for an oratorio, Handel's "Messiah" and an opera, Verdi's "La Traviata". In addition, the following performances of compositions by local composers were given: Karl Eschman's "Autumn Ballet" and Merton Barlow's Cantata, "Down The Mississippi", for chorus and orchestra in three parts, "The Embarkation", "Heat", and "The Moon's Orchestra."

Chapel Choir

Under the pleasurable and capable leadership of Dr. King Kellogg and Student Leader Merton Barlow, the Chapel Choir has completed another successful season. It provides the choral music for the religious services held in Swasey, as well as an occasional program away from the campus. Special programs are given at suitable times throughout the year, notably at Thanksgiving and Christmas. The group merges with other singing groups of the campus in presenting Handel's "Messiah" at Christmas and the other great works done under the auspices of the Festival Association of Granville.

The group numbers approximately forty. The group's programs are almost all done with accompaniment.



First Row: Tringa, Heygel, Williams, Meddaugh, Reid, Elkins, A. Eschman, Jeffrey.

Second Row: O'Bryan, Stodghill, Daniels, Howard, Sipple, Linthicum, Sieplein, (Ackerman).

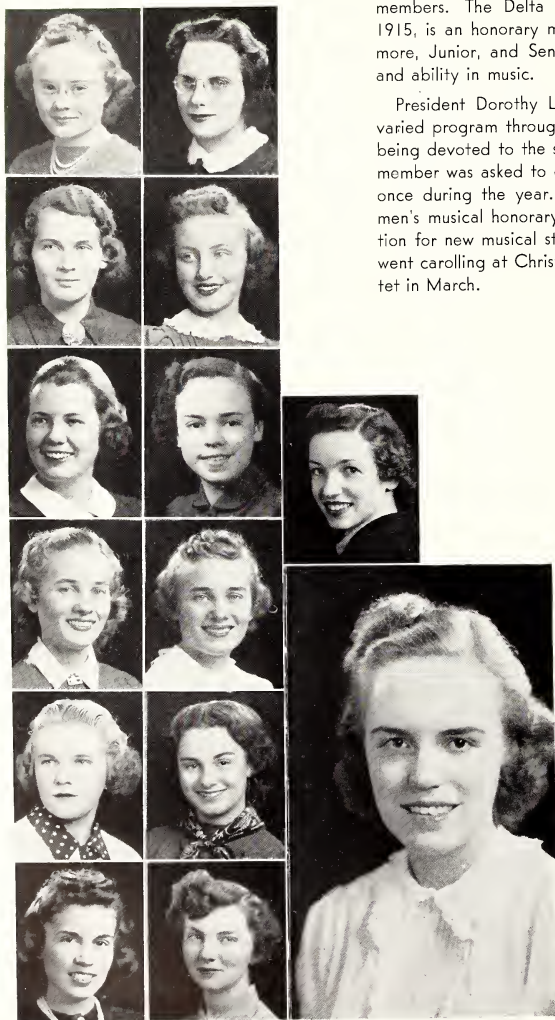
Third Row: Snedden, Matthews, E. Schubert, Parks, Milburn.

Fourth Row: Kellogg, Higgenbottom, Sorenson, Hick, Landfear, Hoffman, Newbert, Christie, Hattersley, Ellor.

Delta Omicron

Delta Omicron has done much during the last year to create and foster fellowship among musicians and to encourage the development of fine musicianship among its members. The Delta Chapter, established at Denison in 1915, is an honorary musical sorority, composed of Sophomore, Junior, and Senior women who have shown interest and ability in music.

President Dorothy Lindamen has led an interesting and varied program throughout the year, many of the meetings being devoted to the study of musical works of note. Each member was asked to give an informal musical performance once during the year. In conjunction with Phi Mu Alpha, men's musical honorary, Delta Omicron sponsored a reception for new musical students at the beginning of the year, went carolling at Christmas, and entertained the Roth Quartet in March.



Charlyn Adams, Mary Atwater
 Boggs, Barbara Eschmen
 Galloway, Huff, Hoffman
 E. Myler, P. Myler
 Shepard, Swartz
 P. Westcott, Wray
 President Lindaman

Phi Mu Alpha

During the quarter of a century since its founding, Phi Mu Alpha has served Denison by sponsoring projects of musical interest on the campus. Besides its contributions as an organization, it has served and won recognition through musical activities of its individual members.

Five members represented the chapter at the province convention in December. An orkna opening ritual used by the local group was presented to the other chapters by whom it was received with approval.

This year's group was led by Robert Wright, president. He was assisted by Bill Hite, vice-president; Ed Deeds, secretary and historian; and Harry Townsley, treasurer. Mr. Sam Gelfer was the faculty adviser.



Robert Wright, President
 Amner, Deeds, Detweiler
 Eschman, Fitch, Gregg
 Hite, Huff, Kellogg
 Lutton, Minton, Moore
 Morgan, Purvis, Sims
 Stickney, Townsley, Utter

"Hamlet"



"Family Portrait"

“Ladies of the Jury”



“Abraham Lincoln”

University Players



MASQUERS—Skrlletz, Koncana, Watson, Bailey, Black, Walker, Webb, Merchant, Wellman, Ed Wright.

UNIVERSITY PLAYERS—Second Row: Murphy, Stacy, Nichol, Needham, Reed.

First Row: McIntyre, Collins, Lamb, Collander, Wilson, Norman, Larwood, Moore.

The Denison Masquers has sponsored a program of five major productions given at the Opera House during the course of the year. The first play was a stimulating comedy called "Ladies of the Jury", followed by the very popular "Family Portrait." The third production climaxed six years of study for Bernard Bailey when he appeared in the title role of "Abraham Lincoln", and proved a definitely sound dramatic ability inherent in this outstanding senior. The Freshmen next produced the recent Broadway hit, "What A Life", under the direction of Jim Black, Masquers president. The year's final production was an outdoor presentation of Shakespeare's "Hamlet". Don Bethune won unanimous applause with his excellent rendition of Hamlet's difficult part.

Portfolio



Dean, Taylor, Bethune, Smith, Martindale, Siegrist.

Portfolio has again fostered the development of original creative literary effort in prose and poetry among Denison students. Editor Don Bethune has cooperated closely with the English Department in discovering and encouraging newcomers to the field of creative writing.

Bob Maxwell, Virginia Martindale, and Dave Timrud contributed many fine short stories to this year's issues, while poetic originality was well displayed by Alison Phillips, Adela Beckham, and Bob Maxwell. Reviews of books, music, art, and drama were also included in each issue. The business and advertising staff was led by George Siegrist.

STAFF

Editor-in-Chief Don S. Bethune

Business Manager George Siegrist

ASSOCIATE EDITORS

Jim Hall

Bob Maxwell

ASSISTANT EDITOR

Virginia Martindale

FACULTY EDITORS

Joseph L. King

Danner L. Mahood

SUBSCRIPTION MANAGER

James Howland

Adytum Staff



ADYTUM EDITORIAL STAFF

Standing: Fessenden, Coffman, Zimmerman, A. Shepard, Burnett, Walker, Lorig, Crisp, Dorsey, Bender, Eichelberger, Ryan, Patrick, Brownholtz, McBurney, Prosch, Taylor.

Back Row, Seated: Burgess, Ireland, Myers, Van Etta, McKell.

Third Row Seated: Evans, Bartholomew, Scott, Schubert, Hinkson, Yoxall.

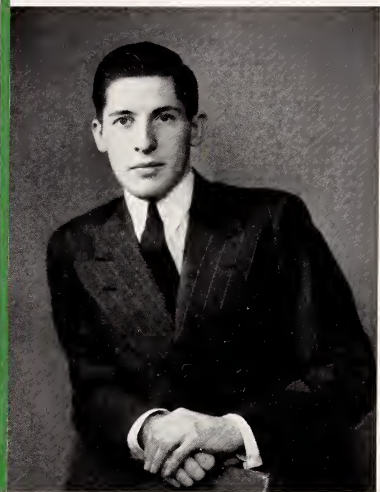
Second Row Seated: Klepfer, Kovachy, K. Scott, Klemm, Green, Fox, Stewart.

Front Row: Lewis, Sorenson, Kohler, Shepard, Johnson, West, Paxton.

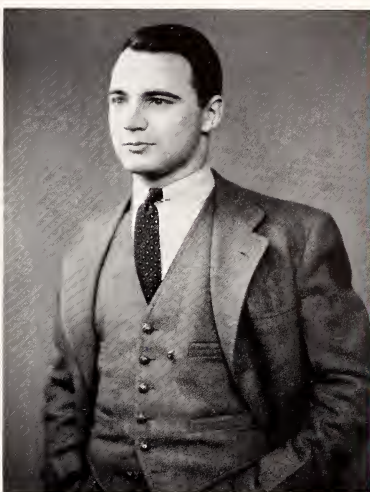
ADYTUM BUSINESS STAFF

Maliszewski, Le Row, Marshall, Welcher, Johnson.

Standing: Souers, Crawford, Nygren, Stemler.



Ralph Scarritt, Editor



Jack Marshall, Business Manager

EDITOR RALPH SCARRITT
 BUSINESS MANAGER JACK MARSHALL
 Art Editor Dave Taylor
 Assistant Art Editor Edward D. Sorenson
 Organizations Editor Howard Johnson
 Feature Editor Lillian Kovachy

ASSISTANT EDITORS

Ann Lewis, Dick McBurney, Tom Fox, Alice Shepard
 Women's Sports Editor Eleanor Pickrel
 Sports Editor Ray West
 Photographers Park Paxton, John Brant

Denisonian



First Row: Moore, Macomber, Bartholomew, Gregg, Barrington, McCrory.

Second Row: Lewis, Kleindienst, Scott, Smith, Nebel, Walker, Ewart.

Third Row: Hartenian, Deeds, Lundy, Reed, Brannon, Richards, West, Fox, Norpell, Yoxall, Freer, Drake, Maliszewski.

For the first time in the history of the Denisonian, the position of editor was held by a woman. Jane Bartholomew acted in that capacity and was assisted by John N. Moore, Robert Macomber and Donald McCrory as associate editors. Other staff members assisting the editors were Norman Hough, business manager; Tim Norpell, advertising manager and Emory Richards as circulation manager. Dr. Reginald Whidden served in the capacity of faculty adviser. It was the aim of the editors this year to produce a capable, enthusiastic staff which would allow participation by the greatest number.

Perhaps the biggest issue confronting the staff was the presentation of the new student constitution. Other affairs treated editorially and at length included campus politics, the men's dorm, and student-faculty relations.

JANE BARTHOLOMEW EDITOR-IN-CHIEF
 NORMAN HOUGH BUSINESS MANAGER
 Tim Norpell Advertising Manager
 Emory Richards Circulation Manager
 John N. Moore Associate Editor
 Robert Macomber Associate Editor
 Don McCrory Feature Editor
 John Barrington Sports Editor
 Eleanor Nebel Society Editor
 Edward Deeds Music Editor

GENERAL NEWS AND FEATURE WRITERS

Dick McBurney, Fran Williamson, Jeanne Smith, Gail Stewart, Pat Brannon, June Christian,
 Bill Haines, John Place, Ann Lewis, Barbara Walker, Doris Lundy, Vi Kleindienst,
 Jack Boyd, Bill Crosman, Ed Forest, Tom Fox, Roger Reed, Betsy Gram,
 Barbara Clatworthy, Ed Hartenian, Lindsay Yoxall, Maryline White,
 Joan Pace, Tony Alexander, June Freer, Virginia Bygden

SPORTS STAFF

Ralph Drake, Jack Brigham, Alison Ewart, Ray West, Ed Maliszewski, George Munger,
 Aldon Kinney

BUSINESS STAFF

Tim Norpell Advertising Manager

ASSISTANTS

John Monson, Dudley Roberts, Bud Slingerland, Bob Vickers, Marge McNeill



Norman Hough, Business Manager



Jane Bartholomew, Editor-in-Chief

Pi Delta Epsilon



Front Row: Williams, Samman, Bartholomew, Hough, McCoy, Whidden.

Second Row: Lindstrom, Richards, Mackelfresh, Scarritt, Norpell, Marshall, McCrory, Moore, Macomber, Barrington, Bethune.

Pi Delta Epsilon, national journalistic honorary fraternity, represents the best in journalistic activities on the Denison campus. Membership, based on at least two years of superior work on the staffs of the Denisonian, Adytum, or Portfolio, is selective. Locally, Pi Delta Epsilon sponsors all journalistic efforts on the campus. Under its guidance the following publications are issued each year: The Student Directory, Desk Blotters, The Denisonian, programs for football games, Portfolio and the Adytum.

Meetings of the organization are held bi-weekly and rotate among the fraternities. The officers who have guided the meetings this year include Norman Hough, president; Jim McCollum, vice-president; Jane Bartholomew, secretary; and Ralph Scarritt, treasurer.

Chemistry and Engineering Societies



First Row: Smith, Cowgill, Molen, Parsons, Sharkey, Bash

CHEMISTRY SOCIETY
Second Row: Dr. Everhart, Little, Haynes, Spangler, E I m e r, Hastings, Dr. Ebaugh

Third Row: Gowdie, Townsley, McBurney, Dasch, Brannon, Dean

ENGINEERING SOCIETY
First Row: Rehn, Gillespie, Brant, Hastings, Kridler

Second Row: Innis, Ladner, Smith, Howe

DENISON CHEMISTRY SOCIETY

The Denison Chemistry Society, oldest student organization with continuous existence in the state of Ohio, has been guided through the school year by Thomas Phillips, president, and Dr. W. C. Ebaugh, faculty sponsor. Founded in 1909, the Chemistry Society has since fostered scientific interest in chemistry and related fields among the student body.

The program for the year has been featured by student talks, with occasional faculty or outside addresses. New members become eligible for membership upon the completion of work in the Department of Chemistry upon which they received the grade of 'B' or better.

ENGINEERING AND PHYSICS SOCIETY

Claiming to be the oldest department on the campus, the Engineering and Physics Society was led single-handed this year by John Brandt. The meetings are held every two weeks with the purpose of each program to present current interest talks on engineering and to offer the members a contact with modern engineering practice. To do this, outside speakers and faculty members are invited to speak at the meetings.

Dr. Ades, Mr. Ladner, Dr. Smith, and Mr. Howe are the faculty members of the Club.

Men's and Women's Debate



Women's Debate — —
Sherbondy, Nebel, Fink-
biner, Ellis.

MEN'S DEBATE — —
First Row: Dr. Crocker, Block, Kloman, Kibby, Hammer.
Second Row: Dickson, Parsons, Morlan, Hough, Dixon.
Third Row: Christie, Ault, Cummings, McIntyre, Scarritt,
Chittenden.
Top Row: Pierson, Swainhart, Hudson, Owens, Vick.



Spanish Club

First Row: Craig, Mr. Amner, Macomber, Deeds, Scott.
Second Row: Sheldon, Holzer, Breece, Henne.



Eta Sigma Phi

First Row: Umsted, Ford, Jones, Barlow, Dr. Deane.
Second Row: Slade, Sherwood, Mowery, Melick.
Third Row: Kovachy, Stacy, Gatton.

SPANISH CLUB

El Circulo Castellano was formed for the purpose of giving students a knowledge and understanding of Hispanic customs and history. Topics discussed during the year had as their main theme those affairs which vitally concern Spain, Mexico, and the Spanish-speaking countries of Latin America.

An initiation early in the fall brought ten new members into the club, each new member presenting a paper upon some Spanish subject. Dr. Amner told the club about his trip through Mexico last summer. During the Spring the program included forums on various South American problems and questions, as well as talks by several authorities on such problems.

Much of the success of El Circulo Castellano is due to Dr. Amner, who gave invaluable aid and information. Bob Macomber served as president of the club, with Ed Deeds as vice-president and Jane Martin as secretary-treasurer.

ETA SIGMA PHI

True to the purpose of Eta Sigma Phi to stimulate interest and further knowledge of the classical languages and life, members of Zeta Chapter read and reported on various books concerning the Classical Age during the past school year. Further interest has prevailed in the learning of familiar American songs in Latin.

Virginia Jones served as president, with Ruth Ford, vice-president; Betty Barlow, secretary; and James Umpstead, treasurer. Dr. L. R. Dean was faculty adviser, giving much valuable aid to the year's program. Eta Sigma Phi continues to offer an opportunity to those genuinely interest in the classics to make an informal and educational study in cooperation with other interested students.

Tau Kappa Alpha

Franco-Calliopean



TAU KAPPA ALPHA — —
 Seated: Dixon, Ault, Dickson, Vick, Evans, Frowine, Nebel, Ellis, Price, Crocker, Swinhart, Kloman.
 Standing: Scarritt, McIntyre, Parsons, Hough, Chittenden, Morlan, Christie.

FRANCO-CALLIOPEAN — —
 Front Row: Vierling, Deane, Ewart, Kuhlank, Maxwell, Black, Martindale, Baile, Barlow, Fox, Kovachy, Love, Bartholomew.

TAU KAPPA ALPHA

Tau Kappa Alpha, led by President Karl Kloman and faculty sponsor Dr. Lionel Crocker, has championed the cause of better debating at Denison in an outstanding manner during the last year. Tournaments with Heidelberg, Case School of Applied Science, Kent State University, Capital University, Davidson, and Wabash College proved the forensic ability of our debaters.

The Denison Chapter sent Karl Kloman and Bette Ellis to Chicago during the Christmas recess to participate in the National Progression Tournament sponsored by the national organization of Tau Kappa Alpha. A focal point of debating interest has been well provided by such an active and progressive organization as Tau Kappa Alpha.

FRANCO-CALLIOPEAN

Franco-Calliopean was active throughout the year as an honorary for students distinguished in literary ability and interest. Group discussions were held on questions of art, literature, poetry, drama, and music, with individual members contributing reviews and reports. President Dorothy Deane and Vice-President Bob Maxwell formed the nucleus for numerous group activities.

Robert Frost was entertained at a reception by Franco following his lecture in Granville during November. An initiation banquet was held at the Granville Inn in April with an address by a guest speaker. Franco-Calliopean hopes to replace literary interest to the high position on the campus that it once held.



F E A T U R E S



Junior Prom

Fall

Winter

May Day

Adytum Queens

Denison Goes Political

Dr. Shaw's Camera Studies

"D" Swing Session



The Junior Prom of '41

Fall



Fall

In the Fall Denison diversifies, girls go swimming, boys play volley ball, sororities decorate, everybody attends Chapel, Queens are crowned, some people go to parties, and it looks like Harley gets a meal.



The General Jam brings tired smiles, weary feet, Dr. Shaw, the perennial Kibby, and much boy-meets-girl.

Winter



Winter

A seemingly endless season of snow and cold weather gave Denison an opportunity to blossom forth in its winter regalia for the first time in many years.

The result was the first annual Winter Carnival which proved to be a big success. The selection of a queen and the post-carnival dance made the Carnival a satisfying pleasantry in our winter scrap books.

Aside from the mere pleasure of winter sports, the snow-time brought this natural beauty-spot into prominence in a different garb. The pictures below are representative of Denison in the midst of memorable winter.



May Day

The annual May Day celebration has become a traditional occasion at Denison which is filled with emotion—evoking surprises for the audience and participants as well.

The much-rehearsed festival program is climaxed by the processional entrance of the Queen's Court. When the court is arranged the queen, whose election has been secret until May Day, descends the stately walk which leads to the south plaza.

The program is completed when Mortor Board, Senior women's honorary, taps Junior women for membership. The many favorable comments of the mothers and townspeople in attendance bear witness to the excellence of the committee's work. The 1939 May Day was another Denison job well done.

The Queen of the May — 1939 —



The Attendants



Lucille Jeffrey - Kappa Alpha Theta



Winifred Jones - Delta Gamma



Virginia Lentz — Kappa Alpha Theta

GLENN MILLER
ORCHESTRA

March 22, 1940

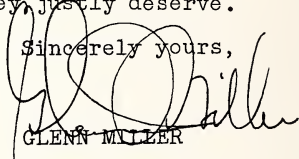
Mr. Ralph Scarritt, Jr.
Editor-1940 Adytum
Denison University
Granville, Ohio

Dear Mr. Scarritt:

It was certainly a problem to choose the queen among the lovely pictures that you sent us. After much deliberation, we have reached a decision and our choice goes to Miss Winifred Sackett. We have chosen as the three attendants to Miss Sackett, Miss Virginia Lentz, Miss Lucille Jeffries, and Miss Winifred Jones.

In collaboration with the Chesterfield committee we used secret ballots in making these selections. Will you be so kind as to offer our congratulations to all the girls chosen. Our only regret is that each girl could not be a queen as they justly deserve.

Sincerely yours,



GLENN MILLER

r. f.

2306 RKO BLDG.
NEW YORK CITY

Queen



Winifred Sackett - Delta Gamma

Denison Goes Political

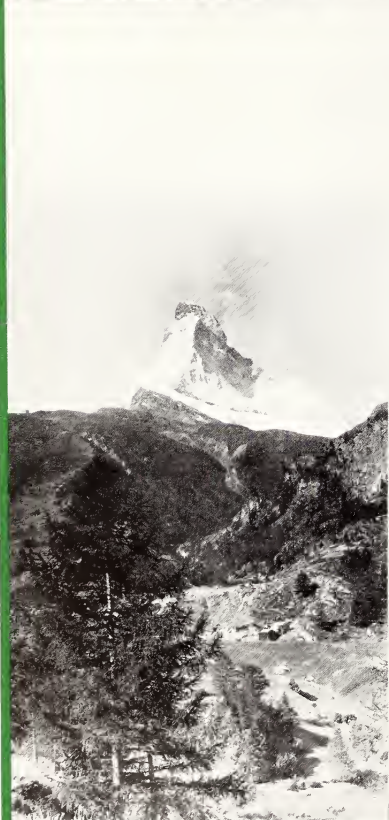


Peils and Price, the peoples' choice . . . Boss Tweed Hough . . . Hainus harrangues for Kibby.
 The campaign wagon rolls . . . the band blares and blows . . . Kib guns for votes. Hoot Mon, can this be Kib? . . . DITTO . . . Hough, "What Price glory?"

"D" Association Swing Session



"Memory - Work - in Denison Traditions"



European Studies by Dr. A. A. Shaw

In furtherance of our theme and being desirous of bringing a touch of real beauty to this Adytum, we have asked Dr. Shaw to allow us to use these excellent shots from his collection of travel pictures. It was Dr. Shaw's interest in photography and candid camera work which suggested the theme for this book. The Editors.

More European Studies



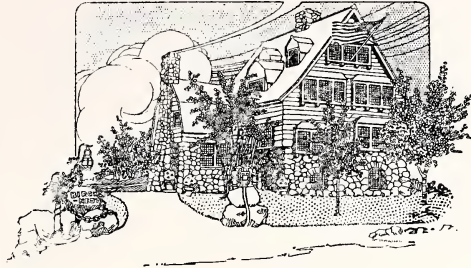
Thank You

Now that the 1940 Adytum is published and the piles of copy pages, layouts, proofs, etc., are cleared away, we are aware of the big part which many friends played in the actual composition of the book. To us their work will not be forgotten, but to the readers their work will be unknown and indistinguishable.

It is our desire to say thank you to a few of these friends of the 1940 Adytum. To the many members of the general staffs, to Jim Cox of the Publicity Bureau, to Jim McCollum, last year's editor, and to the administrative offices for their cooperation in furnishing numerous, detailed lists . . . thank you again.

Ralph Scarritt, Jr., Editor.

Jack Marshall, Business Manager.



MODERN GAS EQUIPMENT
MAKES YOUR HOME REALLY RUN ITSELF

The swing to gas—the efficient, “all purpose fuel”—for the four big home jobs is growing by leaps and bounds. Gas will “out perform” all types of fuel for Refrigeration, Water Heating, Cooking and House Heating.

The Gas Company



The New

MEN'S DORMITORY

Denison University

Granville, Ohio

WILLIAM GEHRON

Architect

Consulting Architect for Denison University

101 Park Avenue

New York

Congratulations and Success

TO THE
CLASS OF 1940

NAN SPORT SHOP

NANCY EATON

Granville

Ohio

HORNER HARDWARE

Fraternity Needs

Student Supplies

PAINTS—GENERAL HARDWARE
SPORTING EQUIPMENT

Mike Gregory '29 Proprietor

THE RED AND WHITE GROCERY

PROPRIETORS

Julius Romei DU-'38

John Romei DU-'40

Granville, Ohio

Phone 8155

Whitman's

CHOCOLATE
SELLING SEAL TEST
ICE CREAM

GRANVILLE PHARMACY

Prescriptions — Drugs — Sundries

Compliments

CLARK RADIO

Central Ohio's Largest Radio Shop

TO SERVE YOU

THE PEOPLE'S STATE BANK

Member of the F.D.I.C.

A sound banking institution providing
protection and experienced handling of
your personal accounts

Granville

Ohio

THE THRIFT STORE

**SEARS
ROEBUCK & CO.**

NEWARK,
OHIO

Compliments of
FOX BROS.

6th and Willson

CAFE

Newark, Ohio

Piper's Market

Fine Quality Meats

E. Broadway

Granville, Ohio

We recommend Railway Express
Co. Pick Up and Deliver for
No Charge

C. O. WISEMAN, Agent

Granville

Ohio

FRATERNITY JEWELRY

Official Badges	Party Favors
Keys and Charms	Dance Programs
Certificates	Awards
Stationery	Trophies

Write for free copy of 1940 Blue Book
showing in color new gifts and favors

Drink
Coca-Cola

is bottles

NEWARK

COCA-COLA

BOTTLING WORKS

L. C. Balfour Company

1826 N. High St.

Factories at Columbus, Ohio—Attleboro, Mass.

To the students of Denison University

May the future hold in store for you
an even greater success than you
have helped to make possible for us.

Your Photographer

The Baker Art Gallery

Est. 1861

RICH & HIGH STS.

COLUMBUS, OHIO

*Duplicate portraits from all photographs
used in the Adytum, may be had
by writing to us.*

COMPLIMENTS OF

**F. M. SPENCER
COAL CO.**

Wholesale
COAL

•
COKE

The Sunday Creek Coal Co.
HIGH GRADE STEAM AND
DOMESTIC COAL

Columbus

Ohio

Compliments of

MEGAW BROS.

"BUDDIE" and "HICKEY"

**EDMISTON'S
BOOK STORE**

BOOKS

STATIONERY
WALLPAPER

NEWARK

Compliments

of

THE GRANVILLE CO-OP

DISTINCTIVE FURNITURE
DEFINITELY LOW PRICED

Schorr-Ketner Furniture

731 EAST BROAD STREET
COLUMBUS

WAYNE KETNER, Denison '36

ANTLER GRILL

"A Good Place to Eat"

STEAKS — CHOPS — LUNCH

NEWARK, OHIO

Delightful Atmosphere

Year Round Guests find enjoyment in our delightful atmosphere and our luxurious accommodations.

Summer Guests delight in the refreshing climate, country walks, eighteen-hole golf course, and our inimitable cuisine.

Excellent Three Course Dinners—One Dollar Per Plate
Student Rates Prevail for Diners

THE GRANVILLE INN

"Ohio's Most Beautiful Inn"

AND GOLF COURSE, Inc.

GRANVILLE
R. J. Young '30 Mgr.

OHIO
Phone 8246

HALL'S DRUG STORE

REXALL STORE

Sodas, Candies, Kodaks, Films
Stationery, Cosmetics

N. W. Corner—Square

NEWARK

OHIO

Compliments of

AIRESMAN ELECTRIC CO.

56 West Main St.

NEWARK

OHIO

ANKELE FLORAL

117 Thresher St.
One Block West of Stone Hall
Phone 8218

Say it with Flowers

SERVING DENISON WITH PROMPT,
CHEERFUL SERVICE SINCE 1922

For Finer Foods in Sandwiches

DROP IN AT

JAKE'S SANDWICH SHOP

34 N. 3rd St.

Newark, Ohio

or

JAKE'S CAFE

70 E. Main St.

Newark, Ohio

Compliments of

DAVIS COMPANY



Milk Dairy Products Cream
Ice Cream

"IT PAYS TO FLY"

For Reservations

See

C. L. GOODELL

Denison Representative

AMERICAN AIRLINES

*Patronage of
our advertisers
is greatly ap-
preciated.*

*Thank You
And May We
Meet Again*



Mademoiselle

NEWARK'S HOME OWNED DEPARTMENT
STORE



THE JOHN J. CARROLL STORE

THE DRAG

We Cater to Undergraduates



MEN'S TOGS
HABERDASHERY
DRY CLEANING
PRESSING
LAUNDRY



WE DELIVER

STUART'S
GIFT & JEWELRY STORE



Denison's Gift Store
Since 1911



GEO. STUART
Optometrist
Jeweler



GRANVILLE

OHIO

EMERSONS

CORRECT DRESS

Does Your Mirror Say "O.K."?

If it does, up goes your head; out goes your chest; back go your shoulders; there's pride in your stride and there's spring in your swing.



THE
ROE EMERSON
STORE

CLOTHES — HATS
FURNISHINGS — SHOES

11 S. West Side Square

S. J. BAGGS, D.U., '10, Mgr.

Newark

For Dependable Quality

Furniture

Stoves

Carpets

Rugs

Lamps

CARLILES

West Main at Arcade Annex

NEWARK

OHIO

***A friendly store
in a friendly city***



K I N G S

In Newark

THE
NEWARK TELEPHONE
COMPANY



"A HOME OWNED COMPANY"



Unlimited Telephone Service for less than

SEVEN CENTS A DAY

for
Sound Value

. . . in Printing

TO SUCCEED you will need printing of some form and that need can be supplied best where you are offered good services and co-operation. Do as others do when you need good printing

CONSULT



THE
GRANVILLE TIMES
AND PUBLISHING CO.

140 EAST BROADWAY

GRANVILLE, OHIO

Compliments of

Mars Incorporated

Manufacturers of

MILKY WAY

Snickers

"THE 3 MUSKETEERS"

MARS

FOREVER YOURS

HAYNE BROS.

NEWARK'S
OLDEST
JEWELERS
and
OPTOMETRIST



KNOWN FOR
RELIABILITY

Since 1849

COMPLIMENTS OF

THE
WILLIAM M. FISHER
& SONS CO.



COLUMBUS,
OHIO

**NEWARK
FASHION**

NEWARK
OHIO

RIDE THE BUS

Between Granville and Newark
FREQUENT SERVICE

INSURED SAFETY
PROVEN ECONOMY

**GRANVILLE MOTOR
STAGES, Inc.**

FOR YOUR GIFT NEED

Visit

H. L. ART
YOUR JEWELER

18 North Park Place

Newark, O.

TAYLOR'S DRUG STORE

The REXALL Store

TOILET ARTICLES
FOUNTAIN SERVICE
DRUG SUNDRIES

Granville, Ohio

Phone 8229

Compliments of

PERRY'S GROCERY

Birds Eye Frosted Foods

CARL WELSH

Granville, O.

Phone 8230

CRANE KRIEG FLORY

HARDWARE

Winchester

Roller Skates
No. 11 South Pk.

Flashlights
Newark, Ohio

Treat Yourself - - -

- - - To the Best

**If It's Furnas
- - - It Must Be Good**

Buy

**FURNAS
ICE CREAM**

NEWARK, OHIO



SHARON VIEW FARM

A locally owned and operated farm dairy

Assure your family of Protection from milk borne disease. Sharon View Farm herd is under federal supervision and is fully accredited disease free. In addition, complete pasteurization program in accordance with standards of the Dept. of Health of City of Newark.

Phone 41220

ELLIS EVANS

STUDENT SUPPLIES

Rytex Personal Stationery

Loose-Leaf Note Books

Greeting Cards

Fountain Pens

Stationery

Quality Books

Rental Library

THE UNIVERSITY STORE

Granville

Ohio

FULLER GROCERY

Fresh and Smoked Meats

*Everything Good
in Foods*

We Deliver

Phone 8212

Granville, Ohio

Compliments of

B. L. FRANCIS

Jeweler

Watches — Diamonds — Jewelry
Prompt Repair Service

Granville, Ohio

THE BUXTON HOUSE

Famous for its

Fried Chicken and Steak Dinners

Home Cooked

and

Over Night Guests

Guests become our friends when once they
have enjoyed the Hospitality and Romance
of

OLD BUXTON HOUSE

Ethel Houston Bounell

Phone 8220

Granville,

"JAHN & OLLIER AGAIN"



This crest of service and quality is the hallmark of America's largest Yearbook designing and photoengraving organization.

JAHN & OLLIER ENGRAVING CO.

Makers of Fine Printing
Plates for Black and Color
Artists and Photographers

817 W. WASHINGTON BLVD.
CHICAGO, ILL.

COLLEGE ANNUALS VIEW BOOKS CATALOGS



Printers of the 1940 ADYTUM



THE DEFIANCE PRINTING & ENGRAVING CO.

DEFIANCE, OHIO



Printers of High School and College Year Books for over Thirty Years

IT'S ALWAYS A
THRILL TO GO
BACK TO THE
GRILL



GRILL MODERNE

Compliments of

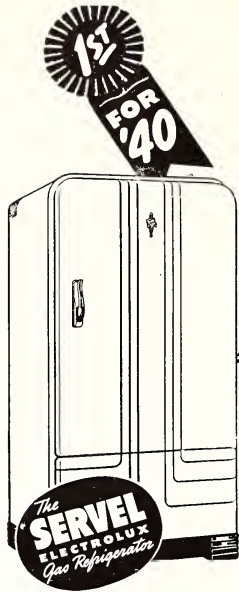
Granville Co-op

*"Good Foods at
Popular Prices*

FULLER'S GROCERY

Granville, Ohio

Phone 8212



The Class Of '40

- the **GAS REFRIGERATOR**

The beautiful 1940 Serval Electrolux gas refrigerator is **FIRST FOR '40** in the hearts of housewives the country over. Gas refrigeration's different principle of operation eliminates moving parts from its freezing system. This exclusive feature assures permanent silence, long life and continued low operating cost. The new 1940 Serval Electrolux models have many other advantages, too. See them on display now. Prices are lowest in Serval history.

The Gas Company

GAS DOESN'T COST . . . IT PAYS!



**FOR THE
PRICE OF
A SINGLE
CIGARETTE**

*Cheer up,
Uncle, you've
only got ten
hours to go!*

YOU MAY BUY ELECTRICITY EQUAL TO THE ENERGY USED IN PUSHING A WHEELBARROW FOR TEN HOURS

THE Farmer in the Dell doesn't look very happy about the whole thing . . . So far as he is concerned, the barrow is the well-known "eight-ball" and he's behind it! The worst of it is, *after he's spent ten whole hours at it*, all that pushing, perspiring and panting only adds up to the price of one little cigarette's worth of Electric Energy at our low rates!

And if he "can take it," and ambitiously tries to compete with a whole kilowatt-hour of electricity—which equals 2,655,314 foot pounds of work—the gardener would have to push the barrow for eight days of ten hours each!

This simple comparison is amusing but true . . . The average residential customer on our lines may purchase Electric Energy equal to work that a slave driver would hesitate to impose on another human being, for less than the price of a smoke. By and large, ELECTricity IS Cheap!



DENISON UNIVERSITY
GRANVILLE, OHIO



CURTIS WALK
"PROIN" DOWN

CHESTRY PORCH

ODANE LIBRARY

BARNEY SCIENCE

ACE
MARSH

ALDO

ODANE ACADEMY

CLEVELAND
HALL

SOUTH WALK

UNPARSONS

BURTON

ODANE GYMNASIUM

LOWER CAMPUS

STUDY

STUDY

AOT
MOVING

RECITAL HALL

CONFERENTIUM

EAST GOLF COURSE

SUGAR
LOAF

PLUM STREET

CHERRY STREET

SPRING VALLEY

BROADWAY
MULBERRY STREET

OWA RANCH

DOWNY SHIRT

THE VIGOR

BR





LAKE
EBAUGH

THE DOCK

WHEEL

WASEY CHAPEL

CASEY OBSERVATORY

CAMPUS

WELFARE HALL

WHISLER HOSPITAL

XR
D+

THE "DRAG"

"WELCOME"

GOLF LINKS

← COLLEGE STREET →

PRESBYTERIAN CHURCH

METHODIST CHURCH

BAPTIST CHURCH

EPISCOPAL CHURCH

THE BIRD OPERA HOUSE

EVILE JUC

CASEY'S

BUDDY & WIFE

U.S. POST OFFICE
WE CLAVE THROUGH

NEWARK 7 mi

KE

← ELM STREET →

MAIN STREET

PROSPECT STREET

EAE

