

MALE CHARACTER
COSTUMES

REF
391
+M651

REF.

391

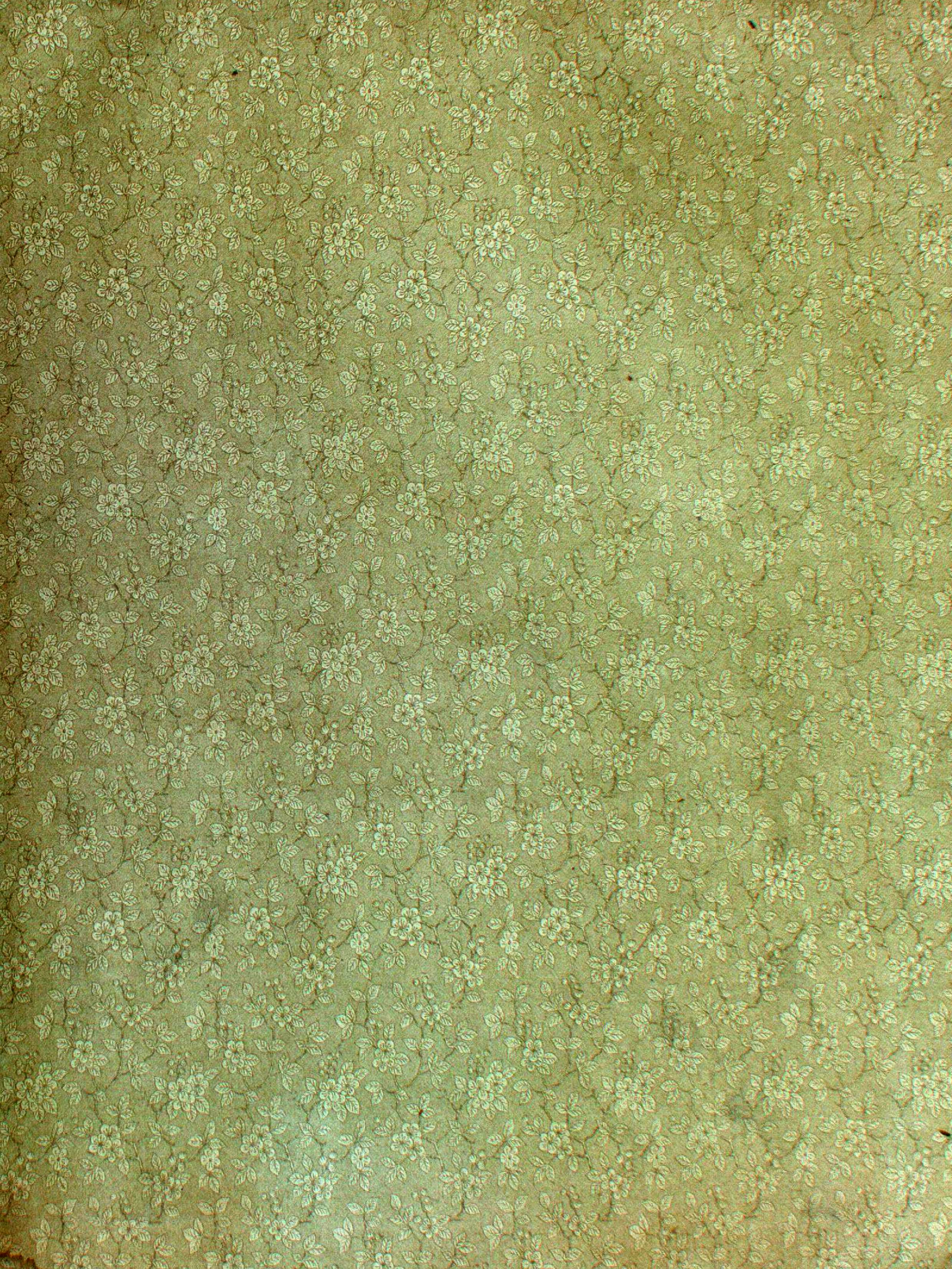
+ M651



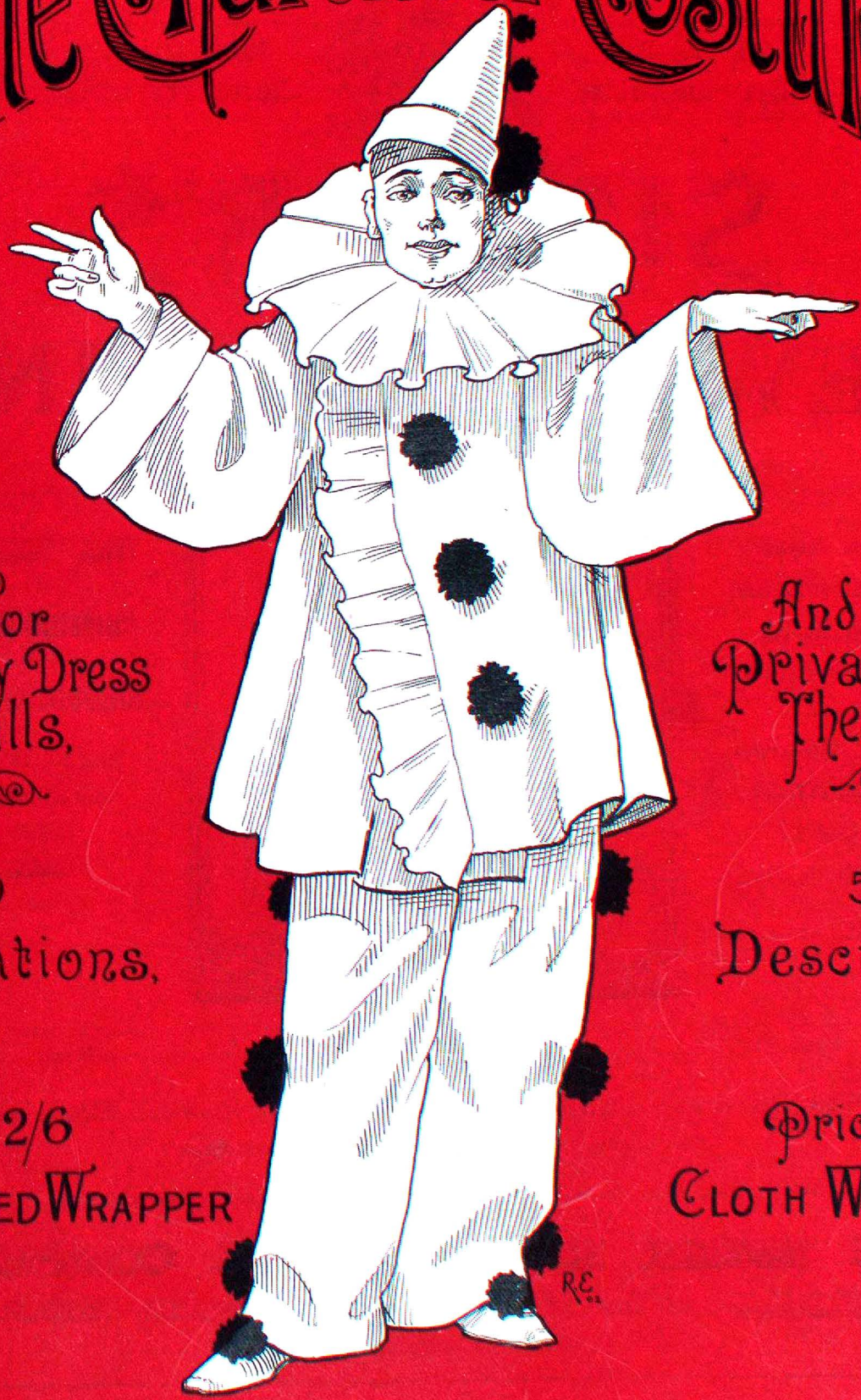
Warrant of the late
JOHN H. R. MOLSON



19968



Male Character Costumes



for
Fancy Dress
Balls.



150
Illustrations.

Price 2/6
COLOURED WRAPPER

And
Private
Theatricals.



500
Descriptions.

Price 3/6
CLOTH WRAPPER

LONDON. SAMUEL MILLER, 142, LONG ACRE. W.C.

ADVERTISEMENTS.

By Special
Appointment to



Her Majesty
Queen Alexandra.

SINGER'S NEW SEWING MACHINE

THE MOST
ACCEPTABLE
WEDDING
PRESENT
AND THE
MOST USEFUL
BIRTHDAY
GIFT
FOR A LADY.



THE "SINGER"
IS
BRITISH MADE
BY
BRITISH LABOUR.

PRICES TO SUIT
EVERYBODY.
FROM
£3
UP.

With the aid of a Singer Sewing Machine, any lady can do all the household sewing, as well as most beautiful Art Embroidery, in a tenth part of the time it would take to do by hand.

CASH TERMS—EASY TERMS—INCLUDING INSURANCE, FIRE & LIFE.

Old Machines (anybody's) Repaired or Exchanged.

WE NEITHER MAKE NOR SELL CYCLES OF ANY KIND.

THE SINGER MANUFACTURING COMPANY,

Management for } 42 and 43, ST. PAUL'S CHURCHYARD, LONDON, E.C.
Great Britain and Ireland }

BRANCHES EVERYWHERE.

**MONTHLY
FASHION
BOOKS**

*Edited
by*
**MADAME
MARIE
SCHILD.**

Le Journal des Modes

Contents :

SIX BEAUTIFUL COLOURED
ENGRAVINGS
OF THE
LATEST PARISIAN FASHIONS.
32 Pages of Illustrations and
Descriptions.
Price 1s. 6d. Post Free, 1s. 9d.

**Madame Schild's
Monthly Journal.**

A USEFUL HOME JOURNAL.
Gives Latest Fashions for Ladies
and Children ; also Cut Paper
Patterns.

Price 3d. Post Free, 5d.
32 Pages in Wrapper.

**MADAME SCHILD'S
Magazine of Ladies' Fashions.**

Price 1d. Post Free, 2d.
32 Pages of Illustrations and Des-
criptions. Gratis Pattern Monthly,
and any Pattern, with Coupon,
ONE PENNY.

Mother's Help.

A MAGAZINE FOR CHILDREN'S FASHIONS.
Price 1d. Post free, 2d.
32 pages of Illustrations and Des-
criptions. Gratis Pattern Monthly,
and any Pattern, with Coupon,
ONE PENNY.

S. MILLER, 142, Long Acre, LONDON,
AND ALL NEWSAGENTS. W.C.

**SHAKESPEAREAN
COSTUMES.**

All the Characters in the
Following Plays are Fully
Illustrated, and the Prin-
cipals in their various
changes.

No. 1.
As You Like It.
29 PLATES. 2/6

No. 2.
Twelfth Night.
22 PLATES. 2/6

No. 3.
Taming the Shrew
31 PLATES. 2/6

No. 4.
**The Merry Wives
of Windsor.**
30 PLATES. 2/6

No. 5.
**The Merchant
of Venice.**
29 PLATES. 2/6

No. 6.
Cymbeline.
37 PLATES. 2/6

No. 7.
Hamlet.
39 PLATES. 2/6

No. 8.
Richard III.
62 PLATES. 2/6

Each Play complete in Paper Wrapper,
2/6. Post Free, 2/9.

S. MILLER, 142, LONG ACRE, LONDON.

**FANCY
COSTUME BALLS**

Coloured Pictures
of Characters for
COSTUME BALLS
AND
Theatrical Representations.

Over 4,000 Varieties.

**NATIONAL,
HISTORICAL,
ALLEGORICAL.**

*For Ladies, Gentlemen, and
Children.*

Price 1/-, 1/6, and 2/- each.
SEND FOR LIST.

BOOKS OF COSTUMES.

**1,000 Ideas for
Ladies' Fancy Dress.**
ILLUSTRATED AND DESCRIBED.
2/6. Post Free, 2/9.

**Old English
Costumes for Ladies.**
ANCIENT BRITONS TO THE
NINETEENTH CENTURY.
5 Coloured Plates. 40 Engravings.
2/6. Post Free, 2/9.

**Fishwife and
Fishergirl Costumes.**
6 Coloured Plates. 25 Engravings.
2/6. Post Free, 2/9.

Minuets and Gavottes.
80 PAGES OF MUSIC.
6 Full-page Etchings showing Costumes
of Charles I. and II., Anne, and George I.
II., and III.
2/6. Post Free, 2/9.

Children's Fancy Costumes.
500 ILLUSTRATIONS OF
COSTUMES FOR BOYS AND GIRLS.
2/6. Post Free, 2/9.

PUBLISHED BY
**S. MILLER, 142, LONG ACRE,
LONDON, W.C.**

Fancy Dress Balls.

Every Description of **Costume and Wig** on Sale and Hire, also Made to Order and Measure from Designs in this Book, and Lent on Hire upon reasonable Terms.

W. WALLER, 79, CITY ROAD, FINSBURY SQUARE, LONDON.

Telephone: 9399 London Wall.

I'm the Doctor.



- I CURE**
INDIGESTION.
- I CURE**
SICK HEADACHE.
- I CURE**
BILIOUSNESS.
- I CURE**
CONSTIPATION.

I am a SIXTY YEARS' SUCCESS.

I am regarded by the Ladies as a valuable PHYSICIAN.

I am known as

Whelpton's Pills

Of all Chemists, or by Post, 8, 14, or 33 Stamps.

WHELPTON'S, 4, Crane Court, Fleet St., E.C.

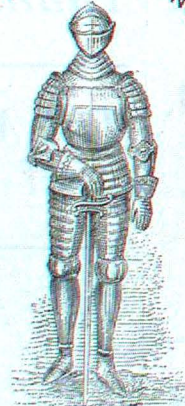
2479

ROBERT WHITE & SONS

Manufacturers of

Fancy Dress Accessories.

R. WHITE & SONS.



IMITATION GOLD AND SILVER LACES, FRINGES, CLOTHS, TISSUES, SPANGLES, STARS, COINS, BELLS, SHELLS, WINGS, WANDS, &c

Embroidered Ornaments of every description in stock, and made to order.

CROWNS, TIARAS, SWORDS, DAGGERS, ARMOUR, AND ALL KINDS OF THEATRICAL JEWELLERY, KEPT IN STOCK, AND MADE TO ORDER.

Send for Catalogue.

ARMOURERS & JEWELLERS,
LACE & SPANGLE
MANUFACTURERS.

FACTORY & SHOWROOMS:

43, Drury Lane, London, W.C.

(Corner of Broad Court, Bow Street.)

Established over 60 years at 30, BOW STREET.

Theatrical Costumes & Wigs

OF EVERY DESCRIPTION

LENT OUT ON HIRE,

For Fancy Dress Balls, Amateurs, Bazaars, &c.

ANY STAGE PLAY COSTUMED.

Write for Catalogue. S. B. WATTS & Co., Ltd., 39, Oxford Road, MANCHESTER.



INDEX TO ILLUSTRATIONS.

	PAGE		PAGE		PAGE
Abbé	12	Gondolier	34	Punch	62
Acres, Bob	7	Hanilet	35 and 38	Quack	57
Albanian	12	Harlequin	35	Quaker	66
Antonio	8	Henry VIII.	35	Raleigh	63
Arab	12	Huguenot	35	Richard III.	65
Archer	9	Hungarian	35	Richelieu	66
Arthur, King	12	Hymen... ..	39	Rip Van Winkle	67
Assyrian	12	Iago	44	" " (Young)	67
Bashi-Bazouk	13	Illyria, Duke of	45	Robin Hood	63
Bassanio	16	Image Boy	40	Roman... ..	63
Blue Boy	14	Incroyable	40	" Captain	68
Breton	13	Indian Chief	40	" Senator	69
Brigand	13	Italian Fisherman	40	Romeo	70
Buckingham, Duke of	13 and 17	Jester	40 and 46	Rosalind	71
Buonaparte, Napoleon	13	Jean de Nivelles	45	Roundhead	63
Cavalier	20	Khaki	42	Rubens	63
Charles II.	20	King of Clubs... ..	41 and 43	Sardanapalus	72
Chef	20	King of Diamonds	41	Satyr	76
Claude Duval... ..	20	King of Hearts	41	Shylock	77
Corsican Brothers (Sir Henry Irving)... ..	23	King of Spades	41	Skeleton	72
Crusader	20	Knight in Armour	47	Spanish Muleteer	72
Danicheff	21	Last of the Dandies	48	Smuggler	72
Darnley	21	Leonardo da Vinci	50	Swiss Guard	72
David Garrick	21	Lesurges	50	Teazle, Sir Peter	73
Directoire	21	Lombardy	50	Tell, William	73
Don Caesar de Bazan	21	Louis XII. Page	50	Touchstone	71
Edward IV.	25	Louis XVIII.	50	Trovatore	73
Edward (Black Prince)	28	Macbeth	52	Trumpeter	78
Edward VI.	28	Maltese Knight	51	Turkish Slave Boy	73
Edgar of Ravenswood	28	Malvolio	53	Tyrolean	73
Eleazar (La Juive)	28	Mandarin	51	Valentine (Faust)	80
Eternal City (Bonelli)	27	Marquis	51	Val Joly	80
Ethiopian	28	Masher	56	Vandyek	80
Evening Dress, 1802... ..	26	Mephistopheles	51	Venetian	80
Falstaff... ..	27	Monk	51	Vicar of Wakefield	80
Faust	29	Navarin	56	Waterman (King's)	81
Figaro	29	Neapolitan	56	Watteau Figure	81
Flemish	29	Nigger	56	Weller, Sam	81
Fool	31	Norwegian	56	Whittington, Dick	81
Francis I.	29	Oliver Cromwell	57	William III.	81
Frederick the Great	29	Orlando	57 and 59	Yankee... ..	83
Garde Française	34	Osbaldiston	57	Yeoman of the Guard	82
Garrick, David	21	Othello... ..	57	Yvetot, Roi d'... ..	83
George II. (Grenadier)	34	Pickwick	62	Zeakunder	83
George III.	34	Pierrot... ..	62	Zouave... ..	83
German Student	34	Pole	62	Zulu	83
		Prince (Edward V.)... ..	62		

ESTABLISHED 1848.

J. BURKINSHAW & SONS,

28 and 30, COLQUITT STREET

(OFF BOLD STREET),

LIVERPOOL,

*Theatrical Costumiers, Theatrical Wig Makers,
Theatrical Bootmakers, Theatrical Booksellers,*

AND DEALERS IN ALL KINDS OF THEATRICAL GOODS.

PATTERNS POST FREE ON APPLICATION.



Costumes Furnished on Hire for
FANCY DRESS BALLS,
AMATEUR PERFORMANCES,
COLLEGES, SCHOOLS, BAZAARS,
TABLEAUX VIVANTS, WAXWORK EXHIBITIONS,
NEGRO ENTERTAINMENTS,
AND ALL
GILBERT & SULLIVAN OPERAS.

N.B.—Fancy Costumes, Boots and Shoes of every Description, for Ladies and Gentlemen, made to order for Hire or Purchase. Please write for Lists and Quotations.



Male Character Costumes.

A GUIDE TO GENTLEMEN'S COSTUME.

SUITABLE FOR

Fancy Dress Balls ^{AND}
Private Theatricals.

150 ILLUSTRATIONS.

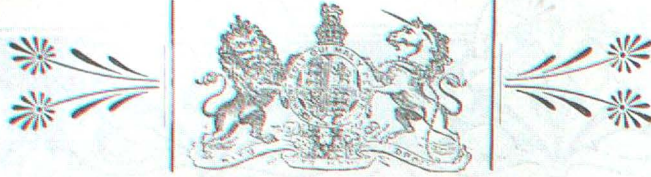
Price 2s. 6d.; Cloth, 3s. 6d.

London: **SAMUEL MILLER,**

142, Long Acre,

London, W.C.

SECOND EDITION.



W. CLARKSON,

45 & 44, WELLINGTON ST., STRAND.

Costumier and Perruquier to His Majesty the King.

COSTUMES, WIGS, ARMOUR, SCENERY, STAGE FRONTS, FIT-UPS
for any size Room. LIMELIGHT, PROPERTIES, ANIMAL DRESSES,
BLONDIN DONKEYS, HOBBY HORSES, MASKS, GIANTS' HEADS,
JEWELLERY, FAIRY WANDS AND WINGS, CROOKS,
RED-HOT POKERS, &c., &c.

Clarkson's "KLEENO."

*A Pure, Hygienic and instantaneous remover of
Grease Paint, Make-up, &c., from Face, Hands, Arms, &c.*

The **MOST MARVELLOUS PREPARATION** yet **INVENTED.**

Price 6d., 1s., and 2s. per Pot.

Clarkson's "UVO."

Absolutely the BEST SPECIFIC FOR PRODUCING HAIR.

*Easily applied and pleasant to use. It stands unrivalled for
Promoting Luxuriant Hair, Whiskers, and Moustaches.*

**Promotes the Growth. Strengthens the Roots. Maintains the Gloss. Restores the
Colour. Prevents Decay. Removes Dandruff. Never Fails.**

W. CLARKSON, Theatrical and Private Wig Maker,
45 & 44, WELLINGTON STREET, STRAND, W.C.

Telephone: 1773 Grand.

Telegraphic Address: "Wiggery, London."

MALE CHARACTERS

— FOR —

FANCY COSTUME BALLS.

HOW TO DRESS.

NOTICE.—The initial letter, number, and price at the end of each description of costume denotes the price at which a Coloured Picture of the Costume can be supplied.

ABBE.—Costume in black velvet, style Louis XIV. or George II. Coat with full skirts, pocket flaps and deep cuffs. Long waistcoat. Knee breeches. Black stockings. Low shoes. Lace cravat and wristbands. Powdered hair. Ornaments: shoe buckles.—T 57 1/6.



BOB ACRES.

ABBE (SPANISH). Cloth or black serge cassock, made full and tied round the waist with a cord. Full sleeves. Large felt hat, rolled up at the sides. *See Illustration.*

ABEILARD (HELOISE AND ABEILARD). Tunic of grey cloth, trimmed with a band of puce, edged with a narrow row of braid on each side. This trimming is placed down both fronts and round the bottom. Deep collar, trimmed to match. Loose paletot of brown velvet, with deep collar and facings of black. Grey silk hose. Low shoes.

Leather waistbelt, with bag purse.—T 19 1/6.

ABSOLUTE, CAPTAIN. An officer of George III. period. Something after the style of a Garde Francaise (*see Illustration*).—Scarlet coat, faced with white, the skirts turned over, back and front, and faced white. White breeches. Lace cravat and ruffles. Three-cornered hat. Silk stockings. Shoes with buckles. *See GARDE FRANCAIS.*

ACRES, BOB. Costume George III. *Illustrated.* Knee breeches of light-coloured silk. Satin waistcoat, trimmed with embroidery. Coat to match, of silk or velvet, richly embroidered. Silk stockings. Low shoes. Lace cravat and wristbands. Powdered wig. Chapeau bras.

ADMIRAL. Tail coat, of dark blue cloth, buttoned down the front, trimmed with gold braid and epaulets. Trousers, with a stripe of gold braid down the seam. Sword and belt. Cocked hat. Epaulets.

AFGHAN.—Long loose white robe and underdress, tied round the waist with a sash of coloured silk. Striped cloak. Scimitar. Brown tights. High boots. Turban.

ALADDIN.—Turkish costume. Turban. Loose shirt tucked in bag trousers, over which is worn a long, loose gabadin. Striped sash round the waist, and a lamp suspended by a chain or cord.

ALBANIAN.—Short jacket of crimson satin or velvet trimmed with gold braid, and richly embroidered on the sleeves, which are very wide. Vest to match. Skirt of white linen. Pleated coloured silk scarf round the waist. Crimson gaiters, ornamented with gold braid. Fez cap.—BM 20 1/6. *Illustrated.*

ALBE, DUC D'.—Period 1610. Riding costume. Blue satin tunic and trunks, braided in gold. Gathered jerkin, made with epaulets trimmed gold. Leather-coloured hose. Lace ruffle. Sword and belt. High boots.—LC 31 1/6.

ALBERT DURER. *See letter D.*

ALFRED, KING.—A Saxon costume. Tunic of white serge, reaching to the knees. Mantle fastened at the throat. Woollen tights, laced over in putti style. Gold circle round the head. Another style—*See Illustration* of King Arthur.

ANTONIO.

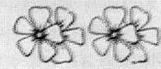
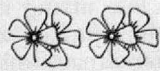
TUNIC of embroidered rose silk, cut V shape at the neck, filled in with a velvet plastron, and fastened round the waist by a jewelled belt, from which a purse and dagger are sus-



ended. The sleeves are of plain silk. A long full cloak made in camlet cloth, and thrown over the left shoulder. Parti-colour silk hose. Pointed shoes with straps. Close-fitting velvet cap, ornamented with a plume.

PROPERTY OF
FRASER LIBRARY

ANTONIO.

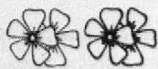


AN
ARCHER.

Tunic of leather,
over which is
worn a tunic of
chain mail fastened
round the waist by



a belt. Over the
right shoulder is
another belt sup-
porting a quiver of
arrows. Shaped
hose of cloth.
Leather boots.
Steel cap. Bow.



AN ARCHER.

PROPERTY OF
FRASER LIBRARY

ALGIERS.—A young Jew. Bag trousers of white linen, fastening at the knees. White stockings. Short jacket and vest of blue cloth, braided with gold and embroidered in the corners. Fancy striped silk scarf round the waist. Red fez, with blue tassel.—N 67 1/6.

ALGIERS.—A Jew of Tlemcen. Short open jacket of brown cloth, edged round with black braid. Close vest of pink silk. Full knickerbockers, fastened at the knee with a band. White gaiters, and low shoes. Striped silk scarf round the waist. Red fez, with a silk scarf wound round to form a turban.—N 36 1/6.

ALIM (FROM ROI DE LAHORE).—Costume of an Indian prince. Tunic of pink silk embroidered with gold thread, ornamented round the collar and on the breast with rows of pearls. The sleeves are of white silk embroidered with gold, and a scarf of the same round the waist. Cloak of white fine woollen material, richly embroidered with gold, and edged with gold fringe. Green silk hose, embroidered with gold. Pointed shoes turned up at the toe. Ornaments: gold armlets, bracelets, and anklets, set with pearls; pearl necklace.—T 187 1/6.

ALLY SLOPER.—Old-fashioned tight fitting body coat, with long tails. Old buff waistcoat. Light grey trousers with straps. High collar with stock and frill. Very long white hat with a black band. Extravagantly large white cotton gloves.

ALSACE.—Peasant. Jacket of drab cloth, bound and faced with blue. Red cloth vest. Breeches of brown velvet, fastened at the knees. Thick ribbed stockings, tied with garters of red ribbon, and high boots. Round the waist is an embroidered belt, with straps hanging down to fasten to the breeches. Fur cap with a red crown.—N 2 1/6.

ALSACE.—Peasant of Freschwiller. Jacket in brown cloth, trimmed with a row of brass buttons down each front. Double-breasted waistcoat of red cloth, trimmed with brass buttons. Trousers of brown cloth, trimmed with brass buttons down the side seams. Black felt hat, with a prominent peak. Blucher boots.—N 80 1/6.

AMRIS.—See MUSKETEER.

ANDALUSIAN (SPAIN).—Cloth jacket trimmed with netted silver fringe and silver buttons. Satin vest trimmed with silver braid. Silk breeches and stockings. Low shoes, with buckles.

ANNABAL (FROM LA MARJOLAINE).—A burlesque Cavalier costume. Short jacket of drab cloth, open in front to show a full shirt. Sleeves of blue and drab striped silk, with square hanging over sleeves of drab, lined blue. Drab and blue

striped breeches. Drab stockings. Low shoes with rosettes. Gold-coloured silk sword belt. An ornament consisting of a red heart pierced through with a gold arrow is worn on the breast. Felt hat, with a feather. Leather gauntlets.—T 169 1/6.

ARAB CHIEF.—Full trousers to the knees, of green silk, tied round with a scarf. Close fitting vest, with sleeves of light brown cloth, trimmed with gold braid. Sash round the waist of parti-colour material, stuck full of pistols and knives. Burnouse mantle, striped handkerchief round the head, over which is wound a turban. Boots of tan-coloured hide, strapped round the leg.—Nx 89 1/6.

ARAB.—Full skirt of white cotton, with short full sleeves. Breeches of the same, full and reaching to the knees. Silk sash round the waist. The arms and legs are bare, which can be imitated by tights and a jersey. Bangles round the wrists and ankles. Burnouse mantle, with the hood drawn over the head and tied round with a scarf. See *Illustration*.

ARRAGON.—Spanish peasant costume in myrtle green cloth. Jacket trimmed with narrow braid. Waistcoat fastened with silver buttons. Knee breeches buttoned at the knees. Silk sash round the waist. Blue stockings and low shoes. Round felt hat.—N 65 1/6.

ARMENIAN.—The male costume is a long robe reaching to the feet made in amber-coloured cloth, fastened round the waist by a white scarf embroidered at the ends. Open vest, edged round with a band of embroidery. Over all this is worn another loose robe of green velvet, trimmed with a deep collar and facings of ermine. The sleeves are full, and trimmed with deep ermine cuffs. Green turban trimmed black astracan.—O N 19 2/.

ARTHUR, KING.—Long white linen tunic, over which is worn another tunic of chain armour, the legs being covered to match. Mantle fastened at the throat. Iron helmet, with wings at each side. The hair is worn long, and confined with a circlet of gold. See *Illustration*.

ARTIZAN (FRENCH).—Blue shirt, fastened down the front with gilt buttons. Long vest of velveteen, cut very open, double breasted and trimmed with gilt buttons, and bound with cerise ribbon. Knickerbockers of velveteen, trimmed with cerise ribbon down each side, and gilt buttons. Blue stockings and high laced boots. Belt round the waist, with gilt buckle. Cerise silk soft cap.—B M 106 1/6.

ATHOS.—See MUSKETEER.

- ASSYRIAN.—Tunic of white woollen material or linen, embroidered with narrow gold braid, and fastened round the waist with a girdle. Over tunic of purple velvet, trimmed round with bullion fringe. The sleeves are short. Close fitting cap, somewhat like a Turkish fez. Flesh coloured tights, tan leather boots. Bracelets on the arms. Square cut beard. *See Illustration.*
- BABY.—Suitable for a very tall man. Robe of cambric, trimmed in front with insertion and embroidery, the robe being made with short sleeves tied up with bright ribbon. Silk sash round the waist, which is used to support a feeding bottle. Bib. Muslin cap.
- BALSAMO.—Louis XVI. Coat in plum velvet, embroidered with silver. Large pocket flaps and deep cuffs. Long flap waistcoat, embroidered with leaves. Plum velvet breeches. Silk stocking, and low shoes with buckles. Lace cravat and waistband.—T 206 1/6.
- BANDIT.—A fancy Italian costume. Jacket of blue cloth braided gold, fastened round the waist with a crimson silk scarf, tied in a bow at the side and hanging in long fringed ends. The sleeves are opened up the inner side to the shoulder, exposing the shirt sleeves, lined pink and braided gold. Brown cloth breeches. Blue stockings, latticed with crimson ribbon. Low shoes. Wide felt hat.—B M 57 1/6.
- BASHI BAZOUK.—Jacket of scarlet cloth trimmed with fur. High vest of drab, ornamented with rows of buttons. Bag trousers, fastened at the knees with bands of scarlet ribbon, and embroidered in the front with gold braid. Black gaiters, embroidered to match. Coloured silk scarf round the waist, supporting a long dagger and pistols. Conical red cap, wound round with a white linen cloth. Long rifle.—N 30 1/6. *See Illustration.*
- BASKER.—A fancy Cossack costume. Over tunic of white cloth double-breasted, bound black and gold. The sleeves are wide, and show under sleeves in blue velvet. Under tunic in blue velvet edged round with gold. Scarf of blue silk round the waist supporting two daggers. Knickerbockers of white cloth. High boots. Fur cap, with blue jelly-bag top. Sword.—B M 126 1/6.
- BASQUE PEASANT. Male costume.—Knee breeches of plush or cloth. Vest of red cloth. Short coat. Broad knitted cap. Cloth gaiters, with plaited spats over the shoes.—O N 23 2/.
- BASQUE PEASANT.—Gaiters in cloth plaited over the feet. Plush breeches. Vest of amber bound with coloured braid. Jacket of red cloth. Red sash. Tam o'Shanter hat.—T 24 1/6.
- BASSANIO (MERCHANT OF VENICE). Any rich costume of the period of Elizabeth, *i.e.*, doublet, trunks, and hose, with a short cape.
- BAVARIAN.—Long coat, with a gathered or full skirt. Vest of red cloth. Black velvet breeches. Knitted stockings. Thick boots. Felt hat, cut low.
- BAYADERE DE CHEMAKHA.—A Greek costume, 1820. Full linen skirt. Jacket body of white silk, with sleeves to match the colour of the skirt. Over body in ruby velvet, open in front to show the under body, and made with half-sleeves. The whole is richly trimmed with gold embroidery, and bound with several rows of gold braid. Velvet cap edged with gold fringe. Large veil hanging at the back. Ornaments: gold necklet and pendant, and a large necklace of coins hanging in a double row over the bodice.—C E 82 1/6.
- BEADLE.—Usual small clothes (coat and breeches), over which is worn a scarlet cloak reaching to the ground, trimmed with gold braid. To this is added the coachman capes. High chapeau bras, bound with gold braid.
- BEAR.—This is simply a dress made out of a bear skin.
- BEAU BRUMMEL.—Costume of George III. period.
- BEEFEATER.—Long scarlet tunic with full skirt, embroidered on the breast with a rose, shamrock, and thistle, and fastened at the waist with a belt. Cloth breeches. Scarlet stockings. Low shoes, with rosettes. White cambric ruffle round the neck. Muffin cap. Halbert in the hand.
- BELLE'S STRATAGEM. *See* DORINCOURT.
- BELPHEGOR.—A Mountebank costume. Full doublet and trunks with frills. White tights. Black boots. Conical white hat.
- BENEDICT (MUCH ADO ABOUT NOTHING). Velvet doublet, slashed. Trunks and hose to match. Low shoes slashed, also short capc. Muffin hat. Sword girdle and dagger.
- BERGER (LOUIS XVI).—Tunic of blue satin, trimmed with amber, cut square at the throat, and filled in with a frill. Sleeves slashed and filled in with white. Breeches of blue satin, trimmed amber, ribbon bow at the knees. White stockings. Low shoes. Crook. Hat of blue satin, trimmed amber.—B M 93 1/6.
- BERNADILLE (FROM LA BOULANGERE A DES ECUS).—A Louis XIV. riding costume without boots. Full-skirted coat, fastened at the waist with a broad leather belt, braided across the chest, and trimmed with buttons. Short cape. Deep cuffs, with lace wristbands. Hunting cap and whip. Thick-ribbed stockings, and low shoes with buckles and high flaps.—T 104 1/6.

PROPERTY OF FRASER LIBRARY



ARAB.



ALBANIAN.



KING ARTHUR.



ABBE (Spanish).

PROPERTY OF FRASER LIBRARY



ASSYRIAN.

R. B. P.



BRIGAND.

PROPERTY OF FRASER LIBRARY



BASHI BAZOUK.



BUONAPARTE.



BRETON.

PROPERTY OF FRASER LIBRARY



BUCKINGHAM (Henry IV).

BERNE, PEASANT OF.—*See SWISS.*

BIBLETTO (FROM THE BRACONNIERS). A Piedmontese troubadour. Short jacket of light cloth, bound with braid. Vest of pink satin. Knee breeches of green plush. Gaiters of white cloth. Cloak. Handkerchief round the head of pink silk. Conical hat, with a feather. Ornaments: gold earrings.—T 26 1/6.

BLACK PRINCE.—*See EDWARD.*

BLACK AND WHITE.—Dress suit, the left or right side made in white cloth, the other in black. The face to be painted to match. Very effective; but the wearer must not get too hot.

BLACK BRUNSWICKER.—Military tunic of black cloth, braided on the chest. Breeches and long boots. Black busby. Black leather sword belt.

BLUE BOY (AFTER GAINSBOROUGH).—Doublet of blue velvet, and knicker-bockers to match. Blue stockings. Deep lace collar, ruffles at the wrists and neck. Large brimmed felt hat, with a blue feather. *See Illustration.*

BLUEBEARD.—Any Oriental costume worn with a long blue beard. When jewelled it makes a very handsome dress.

BOCCACCIO.—Velvet tunic, shaped to the figure, ornamented with a jewelled belt and necklace. Silk tights to match. Low shoes, fastened with a strap.—T 308 1/6.

BOIS-PREAU.—A Catalonian peasant. Knee breeches

of brown cloth, trimmed with red pocket flaps. High cloth gaiters. Cloth jacket, braided and trimmed with buttons, open to show the vest, which is composed of red silk, fastened by a broad leather belt. Felt berrette.—T 230 1/6.

BOHEMIAN.—A fantastic Tyrolese costume. Short Spanish jacket, of black velvet braided with gold, showing the white shirt at the waist. The sleeves are slit up and lined with pink, showing a pink under sleeve. Pink satin breeches. Striped scarf round the waist. Striped stockings. Gaiters. Cloak fastened round the throat with a cord and tassel. Tyrolese hat trimmed with a feather.—B M 45 1/6.

BOMBASTES FURIOSO.—An extravagant military costume of the early part of 19th century. Scarlet military tunic, turned back in the skirt and faced black. White leather breeches and very big boots. Very large helmet, sword, belt, and spurs.

BOULANGERE A DES ECUS, LA.—*See BERNADILLE.*

BRAMIN.—An Eastern costume. Bag trousers of red satin, trimmed with gold braid. Double-

breasted tunic of amber, trimmed with an embroidered band, and fastened round the waist with an Algerian scarf. Long hanging sleeves, lined with white. Under sleeves of blue satin, trimmed with black velvet cuffs. Turban with an agrafe. Pointed shoes. Ornaments: gold anklets.—B M 73 1/6.



BLUE BOY.

After a painting by Gainsborough.

BRETON.—See BRITTANY.

BRIGAND (MARCO SPADA).—Costume made in plum-coloured velvet. Jacket, with facings of crimson silk. Double-breasted waistcoat of blue satin. Knee breeches. Blue striped cloak. Sugarloaf hat, trimmed with a deep tri-coloured band and feathers. Round the waist is a striped silk sash.—B M 14 1/6.

BRIGAND, ITALIAN (FRA DIAVOLO).—Coat of velvet braided gold, the revers and cuffs being of scarlet silk. Gold fringe epaulets. Velvet breeches, braided gold. Crimson stockings, latticed with blue ribbon. Sugarloaf hat, trimmed with scarlet. Amber silk handkerchief round the head.—B M 23 1/6. See *Illustration*.

BRITTANY (OUTSKIRTS OF QUIMPER). Short jacket of drab cloth. Long double-breasted waistcoat of black serge. Knee breeches, made very full round the waist and fastened with a belt. Black gaiters. Low shoes, and white felt hat.—N 23 1/6. See *Illustration*.

BRITTANY.—Young man of Faouët. Long loose trousers in blue serge. Long double-breasted vest, braided round the neck with two rows of gold braid, and ornamented down the front with two rows of brass buttons. Very short jacket, edged with gold braid. Large felt hat, trimmed with a fancy cord.—N 21 1/6.

BUCKINGHAM.—Costume of the time of Richard III. Silk hose, pointed leather shoes. Tunic of velvet, open at the neck and fastened round the waist by a girdle. Wide hanging sleeves, trimmed fur. Sword and dagger. See *Illustration*.

BULGARIAN SHEPHERD. — Loose full breeches, fastened at the knee, the lower part of the leg being protected by gaiters. Low shoes. Red silk sash round the waist, supporting pistols and daggers. Black woollen vest. Jacket braided with yellow braid. White turban.—N 25 1/6.

BUNTHORNE.—Shaped tunic of velvet, and breeches to match. Silk stockings. Dancing pumps.

BUONAPARTE, NAPOLEON.—Blue cloth coat, faced with wide revers of white, edged round with buttons. The skirt of the coat is cut away from the front. White silk vest and leather breeches. High leather boots. Gold epaulets. Sword handle and spurs. Brilliant star on the breast. *Illustrated*.

BUSHRANGER.—See DANITE.

BUZFUZ, SERJEANT.—A barrister's wig and gown completes this costume. Let the gown be soft stuff, it is more pleasant for your partners who wear short sleeves.

CABALLERO.—See MEXICAN.

CALABRIAN.—See BRIGAND.

CANOTIER.—Shirt in striped Oxford cloth, trimmed with a sailor collar and cuffs of mauve silk, trimmed gold braid. Trousers cut short at the knees, and trimmed with a stripe. Mauve silk stockings and low shoes. Jacket to hang over the shoulders, and fastened round the neck with cords. Mauve silk cap.—B M 39 1/6.

CAPAMSTREL (FROM BELLE LURETTE).—Costume of the Garde Française, illustrated p. 34. Coat of blue cloth, braided across with silver, turned back with scarlet revers on the coat tail. Deep cuffs of scarlet, braided silver. Silver epaulet. Scarlet collar, trimmed silver braid. Scarlet cloth vest, braided silver, and fastened with a belt. Knee breeches of blue cloth. White cloth gaiters covering the knees. Three-cornered hat, trimmed with silver braid.—T 260 1/6.

CAPTAIN CONCORAN (H.M.S. *Pinafore*). — See ADMIRAL.

CARDINAL.—See RICHELIEU.

CARABAS, MARQUIS OF.—An burlesque costume of the Elizabethan period.

CARDS.—See KINGS.

CATALAN.—A Spanish fisherman costume. Breeches in serge, braided down the side with red silk, edged with gold braid and buttons. Loose jacket of amber, turned back and trimmed with red, and ornamented with a double row of gold buttons. White shirt, with turned-down collar. Black silk tie. Red silk sash round the waist. Striped cloak thrown over the shoulders. Red jelly-bag cap. Pink stockings, laced across with ribbon. Low shoes.—B M 94 1/6.

CAUCASIAN PRINCE.—Close-fitting tunic of scarlet cloth, richly braided round the neck and down the front with gold. Loose sleeves, also braided gold. Over tunic of black velvet, with short sleeves; open in the front to show the under tunic, and richly braided with gold; sleeves trimmed to match. Sash round the waist of striped silk, in which is fastened a dagger. Knickerbockers of black velvet, braided with gold. Red stockings. Boots of buff leather, trimmed with fur. Fur cap, with a plume.—B M 19 1/6.

CAVALIER.—There are many costumes for gentlemen which come under this heading. All the costumes of the reign of Charles I. and II. of England, Louis XIII. of France, and early part of Louis XIV., may be so called. It is the same costume which would be worn by Don César de Bazan and Cinq Mars. The characteristics of



BASSANIO.

TUNIC made in woollen brocade, open V shape at the neck, showing an undervest; and edged with fur. The sleeves are



PROPERTY OF
FRASER LIBRARY



BASSANIO.



rather full at the shoulder, and are trimmed with fur. Leather waistbelt, supporting a purse, also a dagger. Worsted hose. Pointed shoes. Cloth cap.





**DUKE OF
BUCKINGHAM.**

GABARDINE of salmon-coloured brocade cloth trimmed with white fur, fastened round the waist by a jewelled

girdle supporting a dagger and purse. Collaret of amber cloth. Wide sleeves edged with fur and lined with amber silk. Jewelled neck chain. Amber silk hose. Velvet shoes.

**PROPERTY OF
FRASER LIBRARY**

DUKE OF BUCKINGHAM.

the costume are, the short open coat, showing the full shirt front, a fulling of silk or other materials at the waist of the breeches, slashed sleeves, and a great quantity of lace. Long hair, curled. Rochester, in "The Puritan's Daughters," is a similar costume. Short jacket of drab cloth, braided round with silver. Open in the front, showing a full shirt front of cambric, below which is arranged a fulling of silk. The sleeves are short, over full under sleeves. Short cloak, braided with silver. Knee breeches, edged with point lace. Point lace collar and wristbands. High boots, turned down. Scarlet stockings. Sword belt of scarlet, edged with silver. Broad felt hat, trimmed with a plume.—NCH 5 1/6.

CAVALIER.—Costume in black velvet, slashed with violet. Tunic trimmed down the front and all round with a puffing of violet silk. Full sleeves, slashed with velvet. Point lace collar. Short black velvet cloak, lined with violet. Knee breeches, trimmed down the side with puffs of violet silk. Violet silk stockings. Low shoes, with bows. Broad felt hat, with a plume. Sword.—BM 26 1/6.

CAVALIER.—Jerkin-shaped jacket of black velvet, embroidered and braided with gold. Full sleeves of amber and black striped silk, fastened round the upper part of the arm with a band of velvet. Breeches of amber and black striped silk, slashed at the side with white silk, and ornamented at the knees with rosette and point lace. Deep cambric collar and cuffs, the cuffs edged with lace. Green velvet cloak. Broad felt hat, with a plume. Sword belt of crimson silk, embroidered.—BM 59 1/6.

CAVALIER.—Costume in blue velvet. This shows an alteration in the fashion of the tunic, it being made longer, and fastening at the back, ornamented round the waist with a belt. The sleeves, also, are tight to the elbow, and then slashed. The breeches are also a trifle longer.—CH 42 1/6.

CAVALIER, 1630.—Costume in ruby satin. Close-fitting jacket, trimmed with rouleaux of blue, and blue tags. Full sleeves, slashed with white. Breeches trimmed down the sides with blue, and with blue frills. Deep cambric collar, edged with lace. Cuffs to match. Half-high boots, trimmed round the tops with lace. Short cloak, lined with silk. Gold-embroidered sword belt. Broad felt hat, with plume.—LC 27 1/6.

CAVALIER.—See also ANNAPEL.

CHARLATAN.—A quack doctor's costume, after the style of an Incroyable. Coat in crimson plush, cut with long swallow tails, lined and trimmed on the collar and revers with striped silk. Double-breasted waistcoat of cretonne, ornamented with large gold buttons. Grey buckskin breeches.

High boots with amber tops, just showing the striped stockings. Powdered hair.—BM 41 1/6.

CHAMPAGNE BOTTLE.—Make a cap to simulate the cork of a champagne bottle, tied across to represent the wiring, and covered with gold foil; the nape of the neck should also be covered with gold foil, which can be done by lengthening the back piece of the cap and joining it to the robe. Wear a close-fitting black robe with the label of any champagne brand worked on the back and front.

CHARLEMAGNE.—Long white tunic reaching nearly to the feet, fastened round the waist with a gold girdle, the legs being covered with chain armour (imitation, of course). Rich mantle flowing from the shoulders, embroidered in gold and jewels in a fleur-de-lys. Jewelled crown, sceptre. Sword.

CHARLES I. (AFTER ANTOINE VAN DYKE).—Loose jacket open in the front, showing a full cambric shirt. Knee breeches of scarlet velvet. High boots. Point lace collar and cuffs. Black leather sword belt. Black felt hat with a broad brim, and plume.—CE 42 1/6.

CHARLES I. (ENGLAND, 1627).—Costume in blue velvet. Tunic fastened down the front and trimmed round the waist with small bows and tags. Full sleeves, slashed with white and edged with gold braid and small balls. Breeches trimmed down the sides with small bows and tags and edged with point lace. Deep point lace collar. Blue sword belt. Embroidered gold wide felt hat, with a plume.—LC 18 1/6.

CHARLES I. (PERIOD 1633).—Lady and Gentleman. Lady.—Petticoat and body of amber silk. Robe of violet silk, open in front and forming a train. It is cut low at the neck and trimmed with a deep lace collar. Full sleeves, slashed with amber, and trimmed with lace cuffs. Pearl necklace and bracelets. Gentleman.—Tunic of lavender-coloured silk, braided with gold down the front and sides, and trimmed with ribbon bows and tags round the waist. Sleeves slashed white. Deep collar, trimmed with lace. Lace wristbands. Breeches braided gold and fastened at the knees with amber ribbon, fastened in a rosette. Broad felt hat and feathers.—CH 41 1/6.

CHARLES I.—Black velvet tunic, open at the waist in front, showing the shirt. Velvet breeches and long boots. Wide brimmed hat.—NCH 31 1/6. See also CINQ MARS.

CHARLES I.—See also CAVALIER.

CHARLES II.—Velvet or cloth tunic, slightly open at front to expose a full lawn shirt, and trimmed round with small bows of ribbon and tags.

Breeches to match, edged with bows and tags or lace. Stockings. Low shoes with red heels and high tongues. Lace cravat. Large felt hat. Flowing wig.

CHARLES II.—Silk stockings, and low shoes with red heels. Knickerbockers edged with lace. Petticoat of silk, made full like a Highlander's kilt. Full shirt of fine lawn, with long sleeves edged with lace at the wrists. Short jacket to match the petticoat, showing the shirt at the waist. Short sleeves at the elbows, open up the inner seam. Lace cravat. Sword belt. Walking cane. Flowing wig.—N C H 3.

CHARLES SURFACE.—Any rich costume of the time of George III. will suit. Coat cut away from the front, and close-fitting. Embroidered vest. Knee breeches. Silk stockings and low shoes. Powdered wig. *See Illustration, GENTLEMAN, GEORGE III.*

CHARLES VII. (FROM JEANNE D'ARC).—Blue velvet tunic over a suit of armour, embroidered with gold fleur-de-lys. Court train of blue velvet, embroidered to match, trimmed round and lined with ermine. Ermine collar. Gold chain round the neck, jewelled.—T 134 1/6.

CHARLES VII. (FROM JEANNE D'ARC).—Tunic of crimson cloth, trimmed round with fur, and fastened at the waist with a gold belt, from which is suspended a dagger. Loose, hanging sleeves, open up to the shoulder, and hanging down below the tunic. Full under sleeves of amber colour. Lavender silk tights. Pointed shoes. Cap of maintenance, ornamented in the front with a crown of gold.—T 133 1/6.

CHARLES IX.—Gentleman's costume. Doublet of white silk, slashed with gold. Full breeches of brocade, fastened at the knee. Lace ruffle at the neck. Small cap with a puffed crown, trimmed round with pearls. Short cloak, trimmed with rows of velvet. Stockings. Low pointed shoes. C H 26 1/6.

CHAROLAIS, COMTE DE (FROM JEAN DE NEVILLE).—Costume of the early fifteenth century. Tunic of brocade, fastened down the right side and trimmed all round with ermine. Scarlet worsted hose. Low pointed shoes. Scarlet cap of maintenance. Gold chain round the neck.—T 242 1/6.

CHASTELARD.—Any costume of the time of Early Elizabeth. *See LEICESTER, EARL OF.*

CHEVALIER DE ST. LOUIS (1693). Coat in ruby silk, made with a full skirt and pocket flaps trimmed with gold braid. The shoulders and arm sleeves are also braided with gold. The coat sleeve has very wide and deep cuffs trimmed with bands of

gold braid. At the chest the coat is turned back andaced blue. White cambric cravat with lace ends. Knee breeches and scarlet silk stockings. Low shoes, high in front and buckled across with a strap. Three-cornered hat, trimmed with feathers. Long hair.—C H 51 1/6.

CHINA.—There are so many ways of treating this character, all depending upon individual taste. Many of the Louis XV. and XVI. Dresden china figures are copied and called china. Another suggestion is a white evening suit printed all over with blue plaques.

CHINESE.—Young peasant. Tight-fitting black woollen hose. Tunic of blue cloth, fastened down one side. Thick mittens on the hands. Fan. Clog shoes. Round hat like a smoking cap.—N 76 1/6.

CHINESE.—Winter costume. Long paletot of green cloth. Short over jacket of blue cloth, trimmed round with fur. Wide sleeve edged with fur. High boots, pointed and turned up at the toes. Hat with a red crown and bound fur.—N 19 1/6.

CHINESE.—Tunic reaching to the feet, made in silk and richly embroidered in black and amber patterns. Paletot in green silk, bound with amber and embroidered on the chest and in the corners, and wide sleeves turned up and embroidered. Deep scalloped collar of black silk, embroidered in gold.—O N 8 2/.

CHINESE.—*See also MANDARIN.*

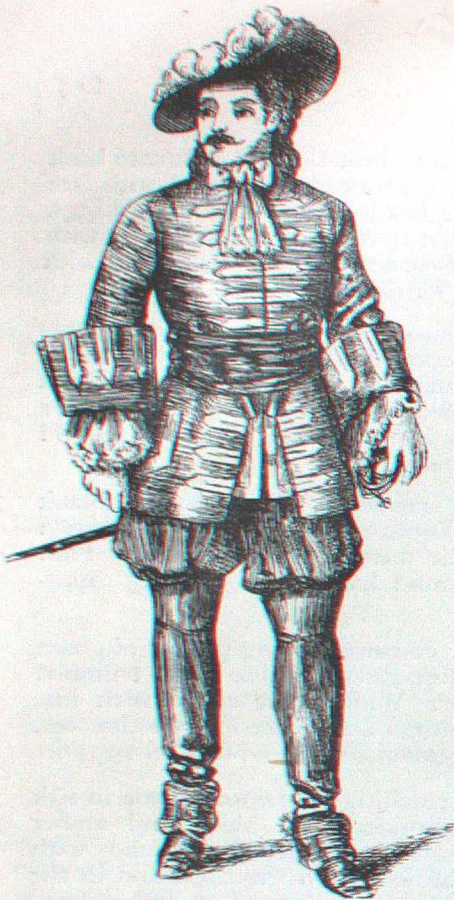
CHRISTMAS, FATHER.—Long loose robe of brown woollen serge, dusted over with white powder to represent frost or snow, the hands being in thick gloves. Long white hair and beard.

CHRISTY MINSTREL.—*See NIGGER.*

CINQ MARS.—Tunic of blue satin laced with silver, open in the front to show a frill shirt, and trimmed round the waist with bows and silver tags. Sleeves slashed with white satin. Deep collar and wristbands, trimmed with point lace. Breeches extending to just below the knee, trimmed down the sides with silver lace, and ornamented at the bottoms with a deep frill of cambric, over which is arranged a row of small ribbon bows, with silver tags. Sword belt, ornamented with silver. Wide felt hat, with a blue plume. Cloak. Wide topped boots.—L C 23 1/6.

CINQ MARS.—Costume in orange satin, trimmed with white. In this costume the upper parts of the sleeve are slashed and filled in with puffings of white. The shape of the tunic with the shirt frill is the same, but the breeches are wider, and not trimmed with lace. This costume is braided with gold.—T 180 1/6.

PROPERTY OF FRASER LIBRARY



CLAUDE DUVAL.



CAVALIER.



CHARLES II.

PROPERTY OF FRASER LIBRARY



CRUSADER.



CHEF.

Albincke

PROPERTY OF FRASER LIBRARY



DON CÆSAR DE BAZAN.



DARNLEY.



DAVID GARRICK



DANICHEFF.

PROPERTY OF FRASER LIBRARY



DIRECTOIRE.

Albion 10

CINQ MARS AND DE THOU.—Costume in black velvet, trimmed orange. Short jacket, open in front to show the loose shirt, and braided with black. Sleeve opened up the inner seam, and filled in with white, tied in the bend of the arm with a bow of orange ribbon with gold tags. Two bows and gold tags on each front of jacket. Velvet knickerbockers, trimmed down the sides with bows of orange ribbon and gold tags. Lace cuffs and collar. Cloak of black velvet, lined orange. Broad felt hat, with a plume. Orange silk stockings and black velvet low shoes.—T 179 1/6.

CIRCISSIAN.—Tunic of scarlet cloth. Large overcoat of white sheepskin, fastened round the waist with a belt, supporting a large knife, and bound with red and yellow braid. The sleeves of the overcoat are short and loose. High fur hat. High boots. Rifle slung at the back.—N 27 1/6.

CIRCISSIAN.—Loose robe of scarlet, fastened round the waist by a scarf cut square at the neck, and with long loose sleeves. Paletot in amber cloth, trimmed round with fur. Fur caftan. Pointed shoes, turned up at the toes. See also FROL GHERASY.—C E 89 1/6.

CLANCARTY, LORD. See *Illustration* of **CLAUDE DUVAL.**—The costume made in scarlet, trimmed gold braid, and crimson scarf.—T 50 1/6.

CLAUDE DUVAL.—Long coat like a military tunic, open in front to show the vest, and braided with gold, tied round the waist with a sash. The sleeves have very wide cuffs, trimmed gold and trimmed with lace round the wrists. Full breeches, and jack boots. Wide felt hat, with a plume. Sword.—T 50 1/6. See *Illustration*.

CLAVERHOUSE.—Long scarlet military tunic, with wide deep cuffs, embroidered with gold. No waistcoat is visible. White breeches. Three-cornered hat trimmed with feathers.

CLAUDE MELNOTTE.—A costume of the first French Republic. Double-breasted coat with a high, deep collar, very short-waisted. White waistcoat, high to the throat. Tight-fitting breeches, fastened below the knee. Boots. Lace cravat, wound several times round the neck. Conical hat of beaver.

CLOWN.—This costume is generally white, trimmed red or blue. Trousers made very full, and are either plain bags or covered with narrow frills, each bound in colour. White tights, with large clocks worked in the same colours as the costume trimmings. White doublet. Close-fitting wig. See also **PIERROT**.

CEUR DE LION, RICHARD.—See **CRUSADER.** *Illustrated*.

CONRAD THE CORSAIR.—See **GREEK PALIKARE.**

COOK.—*Illustrated.* White satin jacket and breeches. Silk apron. White silk stockings. Dancing pumps. The apron should be turned up at one corner and fastened into the waistband. Jabot of lace at the neck.

COQUEBERT (FROM LA BOULANGERE A DES ECUS).—A fantastic footman costume. Coat in scarlet plush, braided with silver. Silver epaulets. The sleeves are trimmed with deep cuffs, braided with silver, and edged with lace. Waistcoat of amber satin, edged with silver braid and fringe. Scarlet plush breeches. Amber silk stockings, drawn over the ends of the breeches, fastened with silver braid garters, and ornamented with large rosettes of white ribbon. Low shoes, high in front, and ornamented with bows of white ribbon. Large hat, crown shape, surmounted by a large plume. Gold-headed stick.—T T 105 1/6.

COSSACK.—See **BASKIN.**

CORSICAN (SIR HENRY IRVING IN THE CORSICAN BROTHERS).—Brown cloth jacket, double-breasted, braided, and ornamented with buttons sewn close together, buttonholes to correspond. Vest of the same, fitting loosely at the neck, made double-breasted also. Velvetten breeches, buttoned at the knee. Sash at the waist; with a broad belt, in which is stuck a knife. Cloth gaiters, covering the feet. See *Illustration*.

COURIER, LOUIS XV.—Short jacket of white cloth, faced with crimson, and braided with gold. Deep cuffs of crimson, braided gold, and trimmed with bows of blue ribbon. Lace ruffles. Shoulder knots of blue ribbon. Waistcoat of blue satin, braided gold, fastened round the waist with a belt. Lace cravat. Crimson plush breeches, with a stripe of blue and gold down the sides. Long white stockings, brought up over the breeches, and fastened with blue ribbon garters tied in bows. Three-cornered hat, braided gold, and trimmed with a feather. Gold-headed stick.—B M 100 1/6.

CROATIAN.—Tight-fitting short jacket of crimson velvet, richly braided round the collar, down the front and on the sleeves, with gold, and trimmed round with fur. Buckskin breeches dyed blue, and embroidered in crimson in the front. Hessian boots. Sash round the waist of blue silk. Leather sword belt. Fur cap with a blue jelly-bag top.—B M 84 1/6.

CROMWELL.—Buff leather jerkin, the sleeves tied up the inner seam. Round the neck and breast is a steel collar. Broad leather belt round the waist. Full trousers of cloth or homespun, and jack boots. Broad felt hat, and large cloak. See **OLIVER CROMWELL.** *Illustrated*.

CRUSADER.—*Illustrated.* Costume of mail, or at least the legs covered with armour cloth (chain), over which is worn a long white linen tunic, embroidered with a Maltese cross on the breast, fastening at the waist with a jewelled sword-belt. Long white cloak, with cross on the shoulders. Pot helmet with a gorget; straight sword with a cross handle.

DALMATIAN.—A Double-breasted vest of crimson cloth, edged with yellow braid. Long coat of white cloth, bound with gold braid, and tied round the waist by a sash of blue silk, supporting pistols and a dagger. Bag trousers, fastened at the knee. Thick woollen stockings. Embroidered leather boots. A cartridge box is fastened at the waist by a leather belt, and rifle carried in the hand. Red fez.—N 41 1/6.

D'ARTAGNAN.—*See MUSKETEER.*

DANITE.—Red woollen shirt. Dark trousers. High boots. Wide felt hat. Sash round the waist to carry revolver. This costume would answer for BUSHRANGER.

DANICHEFF (OSIP).—*Illustrated.* Tunic of black velvet, with full red plastron and sleeves. Full

black cloth knickerbockers. High boots. Flat Russian cap.—T 128 1/6.
DANISH PEASANT.—Black serge trousers; vest cut very long, and fastening close up to the throat.



CORSICAN (Sir Henry Irving in "The Corsican Brothers.")

Coat with full skirts cut without a collar, and edged with gold braid. Red sash round waist. Jelly-bag cap.

DARNLEY, LORD.—*Illustrated.* Tunic of white silk braided with gold, and fastened round the waist with a belt. Trunks to match. White or flesh-coloured silk hose. Low shoes. Short cloak.—T 22 1/6.

DAVID GARRICK.—*Illustrated.* Early George III. costume. Velvet coat, trimmed with gold braid. Sleeves with wide cuffs. Long waistcoat of silk, trimmed also with gold braid. Deep pocket and flaps. Knee-breeches and silk stockings. Low shoes, with buckles. Three-cornered hat.—O 1 1/6.

DEBARDEUR.—Short jacket of amber satin, with collar and revers of blue, and trimmed on the sleeves with lace and blue satin. Open vest of red satin.

Trousers of black velvet, trimmed down the sides with red and tied round the waist with a blue silk scarf. Striped socks and low

- shoes. Gendarme hat, trimmed with a rosette.—*B M 70 1/6.*
- DELICAT AND FLAMECHE (PERIOD LOUIS XIV.).**—French detectives in La Boulangerie a des Écus. A Jonathan Wild costume. Under coat of scarlet cloth, fastened round the waist by a leather belt. Long overcoat of amber cloth, faced with black and braided silver; made full in the skirts. The sleeves have very deep cuffs of black braided silver. Lace cravat and ruffles. High stiff leather riding boots, with broad leather pieces on the instep. Three-cornered hat.—*T 103 1/6.*
- DIABLE.**—Close-fitting doublet of black striped silk, with puffs of white let in at the shoulder and elbow and round the waist. Trunks made to match. Black silk stockings and low shoes. Red satin or cloth c'ok, fastened round the throat with a broad band, and hanging over the shoulder. Small black cap, turned up with red, and red cock's feather.—*B M 78 1/6.*
- DIRECTOIRE (1792).**—*Illustrated.* Swallow-tail coat of blue cloth, made double-breasted, and trimmed with gilt buttons. Full trousers, tucked into high boots, made with pointed toes. The vest is high to the neck. Wide cravat. Beaver hat.—*P 1/6.*
- DIRECTOIRE, 1793.**—Cut-away coat, very short-waisted. Vest of striped silk. Kerseymere knee breeches. Striped silk stockings. Lace cravat. Chapeau bras.
- DIRECTOIRE.**—Cadet Roussel. Long drab cloth coat, made with large pocket flaps, deep collar and revers. Waistcoat of flowered silk, the revers of which are worn outside the coat. Lace cravat and wristbands. Pantaloon of brown nankeen, reaching just below the calf. Blue spotted stockings. Low shoes, with high heels and buckles. Red silk umbrella. Felt hat.—*B M 151 1/6.*
- DIRECTOIRE.**—A duellist. Long cut-away coat, with a high deep collar, in cloth. Waistcoat of pink cloth, showing the lace cravat. Pantaloon of nankeen, buttoned at the knee. White silk stockings and low shoes. Powdered hair.—*C H 86 1/6.*
- DIRECTOIRE.**—*See also* TRENTIZ, POMPONNET.
- DOCTOR OF MEDICINE.**—Charles VIII., 1493. Robe of cloth the same shape as a woman's dress, over which is worn another robe of black stuff, having short loose sleeves, lined throughout with white fur. Red skull cap.—*C H 17 1/6.*
- DOGE OF VENICE (1580).**—Cloak of crimson velvet brocaded, and worn over a plain under dress of red silk. Over this is worn a deep cape of ermine. Red cap, somewhat like a Phrygian cap, with a jewelled band round the forehead, and richly ornamented with pearls and jewels.—*C E 24 1/6.*
- DON CÆSAR DE BAZAN.** *Illustrated.* (THE RAGGED COSTUME.)—Loose jacket, open in front to show the shirt. Knickerbockers, edged with bits of lace. High boots. Large ragged coat. Broad felt hat.—*O T 1/6.*
- DON JUAN (FAURE'S COSTUME).**—Period Elizabeth. Doublet of white silk, quilted and braided with gold braid. Sleeveless jacket of black velvet, trimmed with gold braid and made epaulets. Trunks of white silk trimmed with bands of black satin and gold braid. White silk tights. Low shoes. Waistbelt, with a gold clasp.—*T 123 1/6.*
- DON JUAN (FAURE'S COSTUME).**—Doublet of plum-coloured velvet, with trunks to match. Sleeves of striped silk. Sleeveless overcoat of velvet, lined silk. Lavender silk tights. High leather boots reaching nearly to the hips. Large hat with a plume. Leather belt and sword belt. White gauntlets.—*T 122 1/6.*
- DON MIGUEL.**—Costume from *Une Drame sous Philippe II.* Doublet of white silk braided with gold stripes, and fastened round the waist with a belt. It is made with epaulets, and sleeves of blue silk, quilted, and beaded with pearls. Blue satin trunks. Light blue silk tights. Low shoes. Long cloak at the back, with a high collar. High felt hat, trimmed with a plume. Ornaments: gold chain at the neck with a pendant.—*T 95 1/6.*
- DORINCOURT (IN BELLE'S STRATAGEM).**—Costume of the period of early George III. Sir Henry Irving's costume. Coat of plum-coloured velvet, long under-vest of silk to match, embroidered down the front. Velvet breeches. Silk stockings and low shoes with buckles. Lace cravat and ruffles at the wrists.
- DRAGOMAN.**—*See* EGYPTIAN.
- DRAKE, SIR FRANCIS.**—*See* ELIZABETH PERIOD.
- DRESDEN CHINA.**—*See* CHINA AND BERGER.
- DROGAN (FROM GENEVIEVE DE BRABANT).**—Would make a good page costume of the time of Henri Quatre. Doublet of satin, brocaded, with sleeves of a deeper colour, and epaulets. Narrow corselet. Trunks and silk tights to match the colour of costume. Short cape at the back. Low shoes. Gauntlets.—*T 85 1/6.*
- DUTCHMAN.**—*See* HOLLANDER; *also* INNKEEPER in "Rip Van Winkle."
- DURER, ALBERT.**—Born 1741. Square black cap. Quilted satin doublet, with full and hanging sleeves. Breeches and silk hose. Low shoes. fastened by a strap across the instep.
- EDGAR OF RAVENSWOOD.**—*Illustrated.* Long cloth coat, buttoned down the front and braided. Wide cuffs with lace ruffles, and braided. High boots. Long cloak, with cape. Felt hat, with rather a broad brim.

KING EDWARD IV.

†



PROPERTY OF
FRASER LIBRARY

GABARDINE of ruby brocaded velvet, fastened round the waist by a jewelled belt. The sleeves are made double, the under being close fitting and the upper very wide, lined with ermine. Court mantle of blue velvet, made in front in a long square tabard hanging from neck to feet, and at the back in similar form, but fuller; open up the sides to the shoulders, and lined with ermine. Ermine collar, over which is a jewelled collar. Pure silk hose. Brocaded velvet shoes. Crown.

EDWARD THE BLACK PRINCE.—*Illustrated.* Shaped tunic, embroidered with the Royal arms, the sleeves being made in imitation of armour cloth. Cape of cloth, with a lirripipe wound round the throat. Worsted tights, protected in the front with armour. Close helmet, with feathers.

EDWARD VI.—*Illustrated.*—Quilted doublet, slashed and fastened round the waist with a belt. Trunks to match. Silk tights. Low shoes. Overcoat of velvet, trimmed with gold braid and fur.—NCH 1/6.

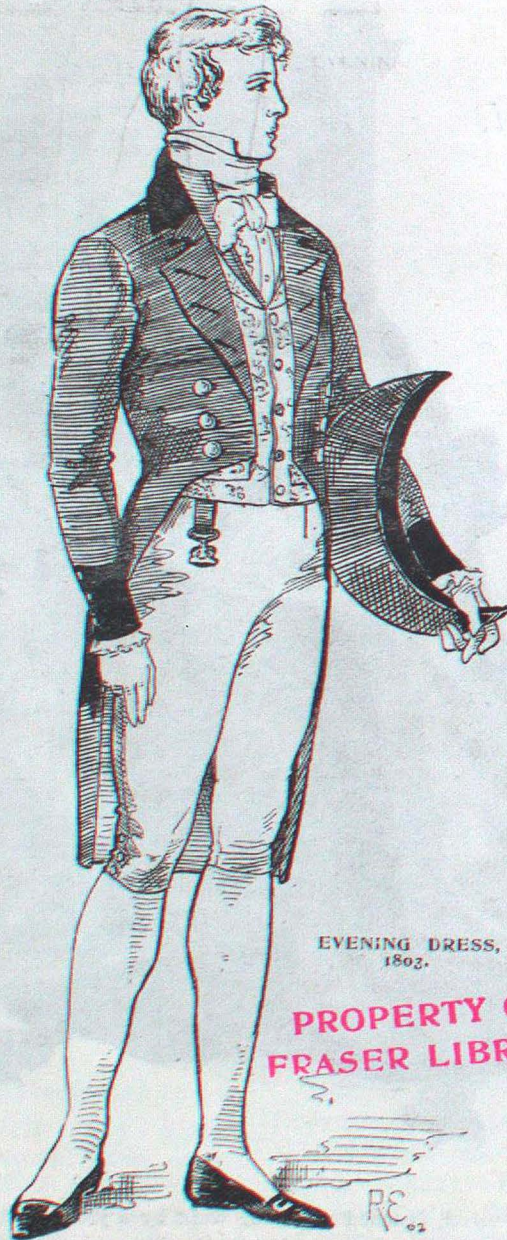
EGYPT.—Dragoman. Long bag trousers in blue cloth, braided at the side. Short jacket, braided to match on the sleeves. High vest of pink, braided with gold. The head is covered with a yellow and brown shawl. Yellow leather low shoes.—N 73 1/6.

EGYPT.—An officer. Bright scarlet bag breeches and gaiters embroidered in gold. High vest of black cloth, braided down the front with gold. Loose over jacket of scarlet, with loose hanging sleeves, braided with silver and lined blue. Scarlet fez. Blue silk sash round the waist. Scimitar.—N 46 1/6.

ELEAZAR (FROM LA JUIVE). *Illustrated.*—Robe or gabardine of brown cloth. This is made as a high close-fitting vest, with a skirt full on, the seam being hidden by a leather belt, from which is suspended a purse or pouch. Close sleeves of plum colour with over sleeves of brown, hanging loose and edged with fur. This costume would also answer for Antonio, in the "Merchant of Venice."—T 109 1/6.

ELIZABETHAN COSTUMES.—See LEICESTER, EARL OF, and FAUST.

EMPIRE, FIRST (FROM LES CONTES D'HOFFMAN).—Blue cloth coat, cut short-waisted, made with large revers and trimmed with brass buttons. White waistcoat, double-breasted. Knee breeches and high boots. White lace cravat and wristbands.—T 270 1/6. See also EVENING DRESS, 1803.



EVENING DRESS,
1803.

PROPERTY OF
FRASER LIBRARY

ESCAMILLO (FROM CARMEN).—A Spanish bull-fighting costume. Spanish jacket of crimson satin, trimmed with gold lace. Open vest of amber silk, edged with white lace. Crimson satin knee breeches, ornamented with gold lace. White silk scarf round the waist, edged with gold fringe. White silk stockings and low shoes. Large red cloak. Black felt hat.—T 88 1/6.

ESSEX, EARL OF. Any costume of the period of late Elizabeth.

ETERNAL CITY ("Baron Bonelli"—Mr. Beerbohm Tree).—See *Illustration on page 27.*

ETHIOPIAN.—Courtier after Vicellio, 1690. White linen bag trousers. Loose over-dress of scarlet brocaded cloth, tied round the waist with a yellow silk scarf supporting a dagger. Large cloak of white cloth, trimmed with a deep cape of ermine, clasped at the throat with a large brooch. Conical hat of scarlet cloth, trimmed with ermine. Ornaments: a gold medallion necklace.—CE 38 1/6.

ETHIOPIAN. — *Illustrated.* Loose bag trousers, fastened at the knee. Jacket, with loose hanging sleeves, fastened round the waist by a sash. Turban. Striped cloak. Shoes, turned up at the points.

EVENING DRESS, 1803 — See *Illustration.*



FALSTAFF (Mr. Beerbohm-Tree).

PROPERTY OF
FRASER LIBRARY

EXECUTIONER.—Tights and jersey of worsted, all black; the face being hidden by a mask.

FABRICE (FROM L'OMBRE).—A riding costume, time of Louis XIV. Military tunic of blue cloth, braided across the front with silver braid, and tied round the waist with a white silk sash. The sleeves have very wide deep cuffs, trimmed silver braid, and show deep lace wristbands. The skirt of the tunic is a little open to show the long waistcoat, which is trimmed to match. Knee breeches rather loose, made in blue cloth. Riding boots, reaching to the knee. White hat, trimmed with a feather. Lace cravat.—T 50 1/6.

FALCONER.—Short tunic of brown velvet, trimmed with a plastron of gold cloth, and bound with gold braid, fastened round the waist with a leather belt. Loose knickerbockers, fastened at the knee and tied with a ribbon bow. White stockings, with calf pieces of velvet trimmed with gold braid. Shoes. Lace ruffle. Soft round hat of velvet, trimmed with two eagle's feathers. Gauntlets.—B M 134 1/6.

FALSTAFF.—Costume of the time of Henry V. Leather jerkin, fastened round the waist with a belt, and made with full hanging sleeves. Tights in parti-colour. Pointed shoes. Flat cap, or hood and cape with a lirripipe. This character is only suitable for a very stout man. See Illustration.



ETERNAL CITY (BARON BONELLI—Mr. Beerbohm-Tree)

PROPERTY OF
FRASER LIBRARY

PROPERTY OF FRASER LIBRARY



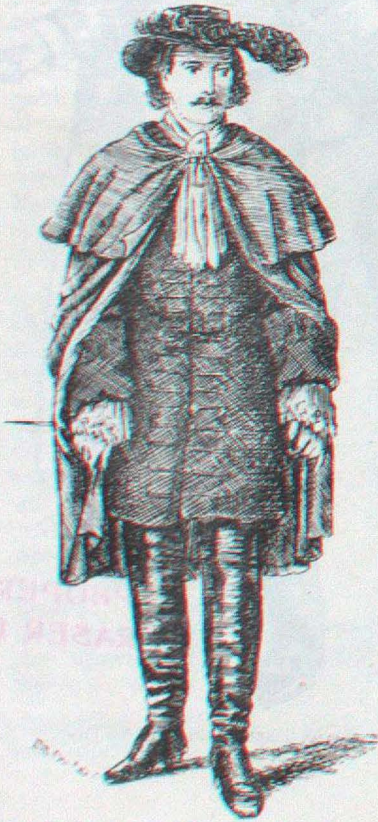
D'ELEAZAR (La Juive).



EDWARD (Black Prince).



EDWARD VI.



EDGAR OF RAVENSWOOD.

PROPERTY OF FRASER LIBRARY



ETHIOPIAN.



FREDERICK THE GREAT.

PROPERTY OF FRASER LIBRARY



FAUST.



FRANCIS I.



FLEMISH.

PROPERTY OF FRASER LIBRARY



FIGARO.

R. B. 1846

FAUST.—*Illustrated.* Costume of the period of Elizabeth. Doublet of velvet, cut square at the throat, and filled in with a plaiting of muslin. The sleeves are full in the upper part, slashed with white silk, and formed into a double puff, fitting close on the forearm. The trunks are of velvet, slashed white. Long hose of lavender silk. Velvet cloak, lined with silk. Soft velvet hat, trimmed with a feather. Velvet sword belt, embroidered with gold.—T 3 1/6.

FIFTEENTH CENTURY COSTUME.—*See* CHAROLAIS.

FIGARO.—A Spanish troubadour. Short jacket of satin, trimmed with epaulets of gold netted fringe, edged with small balls. Open vest, bound round at the waist with a silk sash. Satin knee breeches. Silk stockings and low shoes. A handkerchief is tied round the head, over which is worn the Spanish turban. Cloak thrown across the shoulder. Mandolin.—O T 1/6

FINLANDERS.—Bridegroom's costume. Long tunic of white cloth, open on the chest to show a high scarlet vest, ornamented with two rows of buttons, and embroidered round the neck with silver braid. The open parts of the coat and sleeves are embroidered with gold and scarlet. Waist-belt, supporting a purse. Plum-coloured breeches, and high black leather boots. Black hat, trimmed peacock tail eyes.—O N 12 2/.

FISHER BOY OF NICE.—Sleeveless vest of scarlet cloth, trimmed with white metal buttons, open to expose the shirt, and fastened round the waist with a scarf. Black cloth breeches and high sea boots. Bag cap. A bundle of nets over the shoulder, and a coil of rope in the hand.—N 77 1/6.

FITZO.—A Japanese juggler's costume. Light blue silk tights. Loose vest of blue silk spotted white. Jacket of the same, made open at the front, with a deep collar and revers. Loose sleeves, lined with red. The jacket is ornamented with small tufts of red and white. Fan.—T 143 1/6.

FLEMISH GENTLEMAN, 17th century.—*Illustrated.* Doublet of grey cloth, trimmed down the front with a band of black, and turned up at the corners to match, ornamented with gold braid. Close sleeves, barred round with gold braid. Epaulets to match. Narrow belt of gold braid. The trunks tied at the knees. Pink silk stockings, gartered, and ornamented with a rosette. Low shoes. Deep plaited linen collar and cuffs. Wide felt hat.—L C 8 1/6.

FOOL (MOYEN AGE).—Parti-coloured doublet of satin, fastened round the waist with a belt. Breeches in the same, edged with a pointed frilling. Large puffed sleeves, both differing in

colour. Over-jacket without sleeves of black velvet faced with blue silk, edged with gold braid. Four-cornered cap, parti-coloured, trimmed with gold braid and bells. White silk stockings, and low shoes with buckles.—B M 98 1/6.

FOOL (NOUVEAU PAILLASSE).—Tunic of pink satin, fastened round the waist with a belt, and braided in vandykes, with rouleaux of a darker shade. Double sleeves, the under sleeves rather full and puffed, the over sleeves loose and square, braided to match the tunic, and trimmed with bows of ribbon. Knickerbockers trimmed also to match, and edged round with white lace. Deep linen collar. Round pink satin hat, trimmed with a feather. Pink silk stockings, and low shoes.—B M 145 1/6.

FORESTER.—Tunic and knee breeches of green velvet. Untanned boots. Cap, with an eagle feather in it.

FORT DE LA HALLE.—Loose trousers of white drill, trimmed down the side with a pink stripe, ornamented with large buttons, and fastened at the waist with a silk sash. Red woollen shirt. Short jacket of white drill with large buttons. Large hat.—B M 5 1/6.

FORT DE LA HALLE.—Striped pantaloons, fastened round the waist with a blue silk scarf. White linen vest, open to show the shirt front. Short jacket of sky blue, with white sleeves and blue cuffs. White hat trimmed with blue ribbon. Blue stockings, and low shoes with buckles.—B M 107 1/6.

FRA DIAVOLO.—*See* BRIGAND, DIAVOLO, *also* ITALIAN.

FRANCIS I. OF FRANCE.—*Illustrated.* Rich brocaded tunic, fastened round the waist by an embroidered girdle. Puffed trunks. Silk tights to match in colour. Low shoes, slashed. Over-mantle with puffed sleeves, trimmed with fur. Jewelled necklace. Flat cap, with white plumes.—T 318 1/6.

FRANCIS, son of Francis I., and Dauphin of Vienna.—White silk tights. Black satin doublet and trunks trimmed with gold. Black velvet overcoat with puffed sleeves braided with gold. Round velvet cap trimmed with a feather, and braided gold.—C H 24 1/6.

FRANCIS II.—Pink silk doublet, slashed with white. Trunks of blue and white striped silk, braided with gold. Over-coat of black velvet, braided and trimmed with silver and lined with fur. White silk tights. Round velvet cap. Lace ruffle. Embroidered sword belt.—N C H 25 1/6.



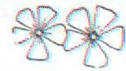
A FOOL.

SILK tights in parti-colour. Tunic of silk fitting the figure to the waist, and trimmed with a deep collar and revers, cut in deep vandyke, each point being tipped with a bell. Round the waist is a band composed of a puffing of white silk strapped with bands of ribbon velvet, be-



low which is a deep basque of velvet cut in deep points, each point being ornamented with a bell. The sleeves are of white silk full to the elbow, and gathered in a fore arm sleeve of velvet. Jester's cap and bauble.

Quantity of 22-inch silk required, 3½ yards; 24-inch velvet, 7 yards; 22-inch white silk, 3½ yards.



**PROPERTY OF
FRASER LIBRARY**

A FOOL.

FRELUQUET.—Short jacket of blue satin, trimmed with brass buttons, turned back with revers faced with blue, and white striped silk cuffs to match. Short vest of blue and white stripe. Blue and white striped pantaloons, fastened at the knee with a ribbon bow. The pantaloons and vest do not meet, and the space is filled by the shirt being fullered out in puffs. White stockings, and low shoes with buckles. Three-cornered hat.—B M 137 1/6.

FRETELLINI (FROM LA MASCOTTE).—Doublet and trunks of crimson silk, braided in diamond shape with gold braid. Over-jacket of drab cloth, made with a high collar. Lace ruffle and cuffs. Grey silk tights, and grey leather high boots. High felt hat, with a red plume.—T 265 1/6.

FRICKET.—A Tyrolese clock-seller. Short jacket of drab cloth, opened down the front and made with square sleeves, hanging down from the shoulder, showing the entire shirt sleeve. Knee breeches of brown cloth. Stockings drawn over the knee and tied with red ribbon. The shirt is drawn over the top of the breeches, and fastened round the waist with a coloured belt, made with pockets. Low shoes. Sugar-loaf hat. Clock carried in the hand.—T 170 1/6.

FRIAR TUCK.—A costume suitable for a stout, jolly-faced man, dressed in a monk's brown robe, with a girdle round the waist, and a rosary.

FROL GHERASY (FROM L'HETMAN).—A Circassian general's costume. Long, double-breasted frock coat of white cloth, trimmed and braided with gold. Sleeves of green cloth, braided gold, having long loose over-sleeves of same material as coat. Scarlet cloak. Scarlet knickerbockers. High boots. Conical fur hat. Black silk sash round the waist, in which is placed a pistol.—T 174 116.

FUN (A JESTER'S COSTUME).—*Illustrated.* Blue cloth military coat, turned back in the skirt, and faced scarlet. Silk sash. White breeches. High boots. White wig, and three-cornered hat.

GARIBALDI.—A very similar costume to the Danites.

GARDE FRANCAISE.—Coat of white cloth, fastened down the front to the belt, and trimmed with blue braid. The skirts are then turned back, the back and front corners being joined together, and faced with blue. Sleeves with deep cuffs, braided blue, and finished with lace frills. Long vest, the front corners only shown by turning back the coat, trimmed with braid. Blue cloth breeches. Long white gaiters, fastening over the knee, and tied with blue garters. Low shoes. Gendarme hat, trimmed with blue ribbon. Powdered hair.—B M 4 1/6.

GARDE FRANCAISE.—A fifer. Coat of scarlet, fastened to the waist, and faced with black, bound white. The sleeves are trimmed with coloured stripes, black epaulets, and cuffs. Long vest of mauve, trimmed black braid. White breeches, and long black gaiters, covering the knees. Low shoes. Three-cornered hat, trimmed with a cockade. Powdered hair, with a tail at the back.—B M 51 1/6.

GARDE FRANCAISE.—*Illustrated.* See also CAPAM-STREL.

GASCON, THE.—Leather doublet, fastened round the waist with a belt; made with epaulets, and sleeves of white cloth, braided gold. Trunks of white silk, striped brown. Green silk tights, and high leather boots, drawn up tight over the knee. Broad beaver hat, trimmed with a plume. Large cloak of white and brown stripe.—T 34 1/6.

GASTON DE META, a warrior of the Middle Ages. —Chain mail shirt, over which is worn a tunic of crimson velvet. This is made a plain body, with short sleeves and plaited skirt, fastened round the waist with a leather belt, and sword belt. Crimson silk tights, and high boots. Steel gauntlets, and helmet with raised visor.—T 132 1/6.

GENDARMES (FROM GENEVIEVE DE BRABANT).—Tunic of blue cloth, covered by a shirt of chain mail and necklet of steel. Deep band of gold round the waist, to which is attached the sword. Blue worsted tights, covered with steel kneecaps and leg-protecting pieces. Cloth gaiters, shoes, and spurs. Wide felt hat, turned up in the front, trimmed with a gold lace bow. Mu ket.—T 81 1/6.

GEORGE II. (SOLDIER).—*Illustrated.* Scarlet coat, turned back in the skirts from the front, and faced white. White breeches. Gaiters over the knees. Cross belts. Mitre cap.

GEORGE III. (GENTLEMAN).—*Illustrated.* Cut-away coat of silk or velvet, richly bordered with embroidery. White silk vest, embroidered knee breeches. Silk stockings and low shoes. Powdered hair. Chapeau bras.

GERALD, a Saxon warrior, from La Fille de Roland. —Tunic of scarlet cloth, over which is worn a shirt of chain mail, fastened round the waist with a belt, from which is suspended a horn and dagger. Round the armour shirt is placed a black band ornamented with gold; and the under tunic, which shows beneath the armour, is also trimmed with gold. Loose cloak of blue silk, embroidered with gold, and fastened at the throat with a clasp. Violet silk tights. The ankles are protected with armour. Gilded helmet with wings on each side.—T 79 1/6.

GERMAN STUDENT.—*Illustrated.* Military tunic braided across the chest. Tight-fitting trousers and Hessian boots. Belt round the waist. Round cap.—T 258 1/6.

GERMAN STUDENT.—A military tunic of black velvet braided across the chest. Light tight-fitting trousers and high boots. Belt round the waist, from which is suspended a tobacco pouch.—O N 17 2/.

GIBELIN.—Leather jerkin, worn over a vest made with long sleeves of crimson cloth, barred with black. Round the waist is a red silk scarf, over which is fastened a belt. Sword belt of black leather, embroidered with red, and trimmed with small red tassels. Black cloth breeches, fastened at the knee. Red stockings with black bars. Half-high boots. Lace ruffle round the neck. Crimson velvet cap, with a white feather.—B M 81 1/6.

GILPIN, JOHNNY (GEORGE III. RIDING COSTUME).—Long coat fastened down the front, the sleeves being made with white cuffs, and braided. Knee breeches and high boots. Long cloak, with a cape. Three-cornered hat, and wig.

GLOUCESTER, DUKE OF.—*See* RICHARD III.

GOLD SEARCHER.—White skirt, embroidered round the waistband and front. Trousers tucked into leggings. Red scarf round the waist, and a jacket slung by a cord round the neck. Large straw hat.—B M 61 1/6.

GONDOLIER.—Fancy Costume. Shirt of black satin, with a V piece of red let in at the chest. Red sailor collar and cuffs, trimmed with gold braid. Trousers of red and black striped satin, with gold braid between each stripe. Red silk sash round the waist. Black satin bun hat, with a gold band and red tuft.—B M 122 1/6.

GREEK ANCIENT (POLYEUCTE).—Under-dress forming a skirt, ornamented with loose over dress forming a sleeve, and fastened round the waist with a girdle; trimmed with bands of embroidery and gold fringe.—T 225 & 226 1/6.

GREEK PRINCE, 1819.—Skirt of white linen, fastened at the waist with a coloured silk scarf. Vest of crimson satin, trimmed with white gold braid. Short jacket with loose sleeves, trimmed also with gold braid. Gaiters of crimson satin, trimmed to match. Low shoes. Scarlet fez.—C E 79 1/6.

GREEK PALIKARE.—Short full white linen skirt, fastened round the waist by a sash, stuck full of pistols and daggers. White shirt with loose sleeves. Short jacket of crimson velvet bound with black, and trimmed with gold buttons. Loose hanging sleeves. Crimson satin gaiters embroidered at the knees. Scarlet fez.—N 6 1/6.

GREEK.—*See* also BAYADERE DE CHEMAKHA.

HAMLET.—*Illustrated.* Black velvet tunic, slashed on the breast with blue, and fastened round the waist with a belt and sword. Sleeves puffed at the shoulder and slashed blue. Black silk tights. Low black velvet shoes. Long black cloak. Felt hat with a long black plume. Lace frill round the neck and wristbands.—O T 968 1/6.

HARLEQUIN.—*Illustrated.* Close-fitting jersey and pantaloons in diamond shape, and three-cornered patterns in various colours, spotted and edged with gold. Belt round the waist. Cap with a black mask. Black wand. Low pointed shoes.—B M 17 1/6.

HARLEQUIN, FRENCH.—Jacket and trousers made in patchwork of three-cornered pieces, coloured blue and yellow. Large double frill round the neck, and at the wrists. Low shoes, trimmed with yellow and blue rosettes.—T 200 1/6.

HAROLD, KING.—*See* GERALD.

HENRI D'ALBERT, Grandfather of Henry IV.—Tunic of blue velvet, cut square at the neck and slashed in three places on the breast, lined with white, edged with gold braid. It is bound round the neck and the hem with gold braid, and fastened round the waist with a belt. The square at the neck is filled in with fine white linen, and a narrow frill round the throat. Over-coat of old gold-coloured satin, brocaded, and lined with white fur. The sleeves are made in graduated puffs from the shoulder and slashed. Crimson satin cap with a plume. Crimson tights. Low shoes.—C H 22 1/6.

HENRY II., KING OF FRANCE.—Black satin doublet, embroidered and braided with gold. White silk trunks, slashed with amber silk. White silk tights. Black satin low shoes. Short cloak, trimmed with rows of gold braid. High lace collar. Velvet hat, with a plume. Embroidered belt at the waist, from which is suspended a purse and the sword belt. Ornaments: a double gold chain, with pendant.—N C H 13 1/6.

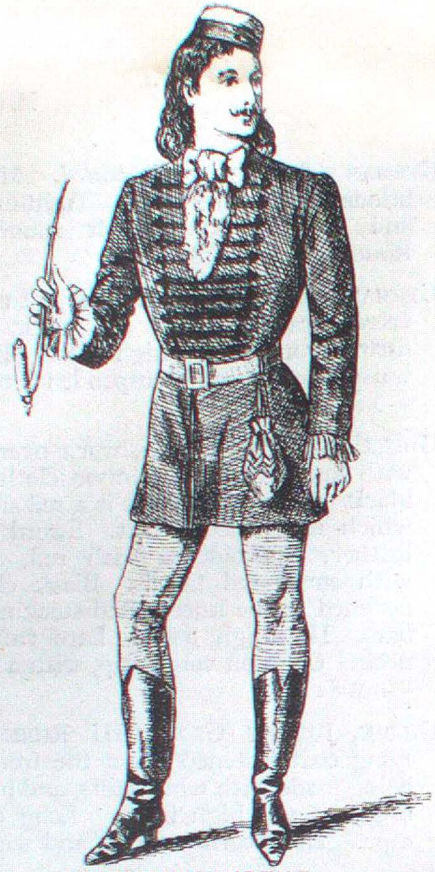
HENRY III.—Gentleman of the Period. Pointed doublet of green silk, trimmed with silver braid. Silver braid epaulets and full sleeves. Lace ruffle round the neck. Green silk breeches, fastened at the knee. Red silk stockings and low shoes. Black satin short cloak, braided with gold, and lined with red silk.—C H 35 1/6.

HENRY III. (MIGNON).—Doublet of striped silk, buttoned down the front, and fastened with a belt. The sleeves are full and puffed, the puffs being graduated from the shoulder. Breeches of striped silk, fastened at the knee. Stockings to match. Low pointed shoes. Lace ruffle round the neck. Short green velvet cloak, lined with

PROPERTY OF FRASER LIBRARY



GARDE FRANCAISE.



GERMAN STUDENT.



GENTLEMAN (George III.).



GONDOLIER.

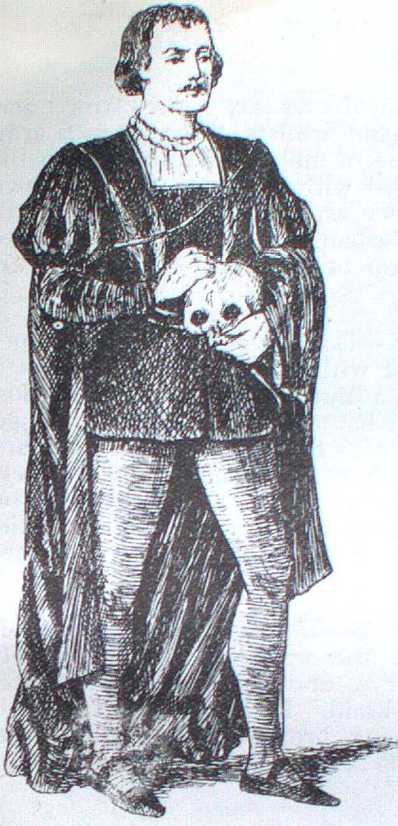
PROPERTY OF FRASER LIBRARY



GEORGE II. (Grenadier).

R. Smith

PROPERTY OF FRASER LIBRARY



HAMLET.



HUNGARIAN HUSSAR.



HENRY VIII.



HARLEQUIN.

PROPERTY OF FRASER LIBRARY



HUGUENOT.

- red. Hat trimmed with a scarlet plume. Gold chain and pendant round the neck.—L C 33 1/6.
- HENRY III.**—A Gentleman of the Court. Doublet of white silk striped with red, each stripe being edged with gold braid. Double or Moyen Age sleeve. The under sleeve is full, and slashed with red. Hanging sleeves of pink silk, trimmed round with gold braid. Trunks to match the doublet. Breeches of pink silk, fastened at the knee. High linen collar. White stockings and low pink shoes. High hat, trimmed with a white feather.—NCH 1 1/6.
- HENRY III., KING OF FRANCE.**—White silk doublet, fastened at the waist with a belt, and brocaded with rows of pearls. The sleeves are braided crossways with gold braid. Short trunks of amber and green silk. Breeches of white silk, brocaded with gold. Short velvet cloak, brocaded with gold, and lined with white brocade. High lace ruffle. Small velvet cap, trimmed in front with a gold ornament and a plume. White stockings and low shoes.—NCH 10 1/6.
- HENRY III.**—Street porter, 1586. High cloth vest, with sleeves of a different colour. Full breeches, fastened above the knee. White leather gaiters. Low shoes. Low-crowned hat.—CH 33 1/6.
- HENRY IV., 1595.**—Black silk doublet and trunks, slashed, and brocaded with black. Black silk tights. Velvet cloak, braided gold and ornamented with a star. Lace ruffle. A large order worn on the breast, suspended by a blue ribbon. Black hat, trimmed with a white feather.—CH 37 1/7.
- HENRY V., WHEN PRINCE HENRY.**—See ISOLIN and KNAVE OF CLUBS.
- HENRY VIII. OF ENGLAND.**—*Illustrated.* White brocaded tunic, with a full skirt plaited on, and trimmed with gold braid. White silk tights. Slashed shoes. Overcoat of ruby velvet, lined with blue, and trimmed with a deep collar of fur, ornamented with wide gold braid. Girdle at the waist, with a dagger. Jewelled chain round the neck. Flat velvet cap, trimmed with jewels and white feathers.—CE 10 1/6. See also FRANCIS I.
- HEREWARD (THE LAST OF THE SAXONS).**—See SAXON.
- HIGHWAYMAN.**—See CLAUDE DUVAL.
- HIGHLANDER.**—See SCOTCH.
- HINDOO PRINCE (SCINDIA, IN LE ROI LAHORE).**—Choga of amber silk embroidered in squares, with a flower in each square; braided over the breast with strings of pearls. Crimson and white silk sash round the waist, from which a sword is suspended. The sleeves are close-fitting, and trimmed with gold armlets, three on each arm. The leggings are of amber silk, slashed up the front, and puffed with crimson. Scarf thrown over the shoulder, embroidered and edged with gold fringe. Turban, richly jewelled. Pointed shoes, turned up at the toes.—T 192 1/6. See also ALIM.
- HOLLANDER, 1620.**—Doublet of pink silk, fastened round the waist with a belt. The belt itself is trimmed with a number of short ends, close together, which hang down and form a fringe. Sleeves slashed with blue on the upper part, and ornamented with epaulets matching the belt. Loose breeches, fastening at the knee. Blue stockings, gartered with pink. Low shoes, tied with pink. High linen collar. Long gloves. White hat.—L C 34 1/6.
- HUGUENOT (MARCEL).**—*Illustrated.* Leather doublet, fastened round the waist with a broad belt. Brown cloth sleeves, and hanging sleeves to match trimmed with braid. Roll epaulet. Trunks of cloth striped with broad braid. High leather boots reaching to the trunks. White linen collar.—T 71 1/6.
- HUGUENOT (SAINT BRIS).**—Black silk doublet, and trunks striped with velvet. Cloak with a high collar, made of similar material. Lace ruffle. High hat with plume, and ornamented with a double cross in the front. High boots reaching nearly to the hips. Black embroidered sword belt. Gauntlet gloves. The fatal white handkerchief is carried in the hand.—T 72 1/6.
- HUGUENOT (THE COMTE DE NEVERS).**—Doublet and trunks of white satin trimmed with stripes of gold braid, and fastened round the waist with a crimson velvet belt bound with gold braid. Short cloak of crimson velvet, lined with white silk, and trimmed with gold braid. White silk tights, and low shoes with a roll over the instep. Gold jewelled chain round the neck.—T 22 1/6.
- HUNGARIAN.**—Military tunic of scarlet cloth braided with gold across the front, and fastened round the waist with a silk sash. Gold braid on the sleeves. Blue cloth trousers with gold braid down the side. Hessian boots with tassels. Round fur cap with a jelly-bag top.—BM 11 1/6.
- HUNGARIAN (FRIDOLIN, FROM LE ROI CAROTTE).**—Close-fitting vest of blue satin braided across the chest in military fashion, and fastened round the waist with a belt. Large loose sleeves of white satin, trimmed with braid. Blue velvet jacket slung at the back. Brown pants, braided. Hessian shaped boots with silver tassels. Fur cap with a jelly-bag top of blue silk.—T 9 1/6.

PROPERTY OF
FRASER LIBRARY



COSTUME 1808.—THE RIGHT HONOURABLE WILLIAM PITT.

Painted by Gainsborough.



PROPERTY OF
FRASER LIBRARY

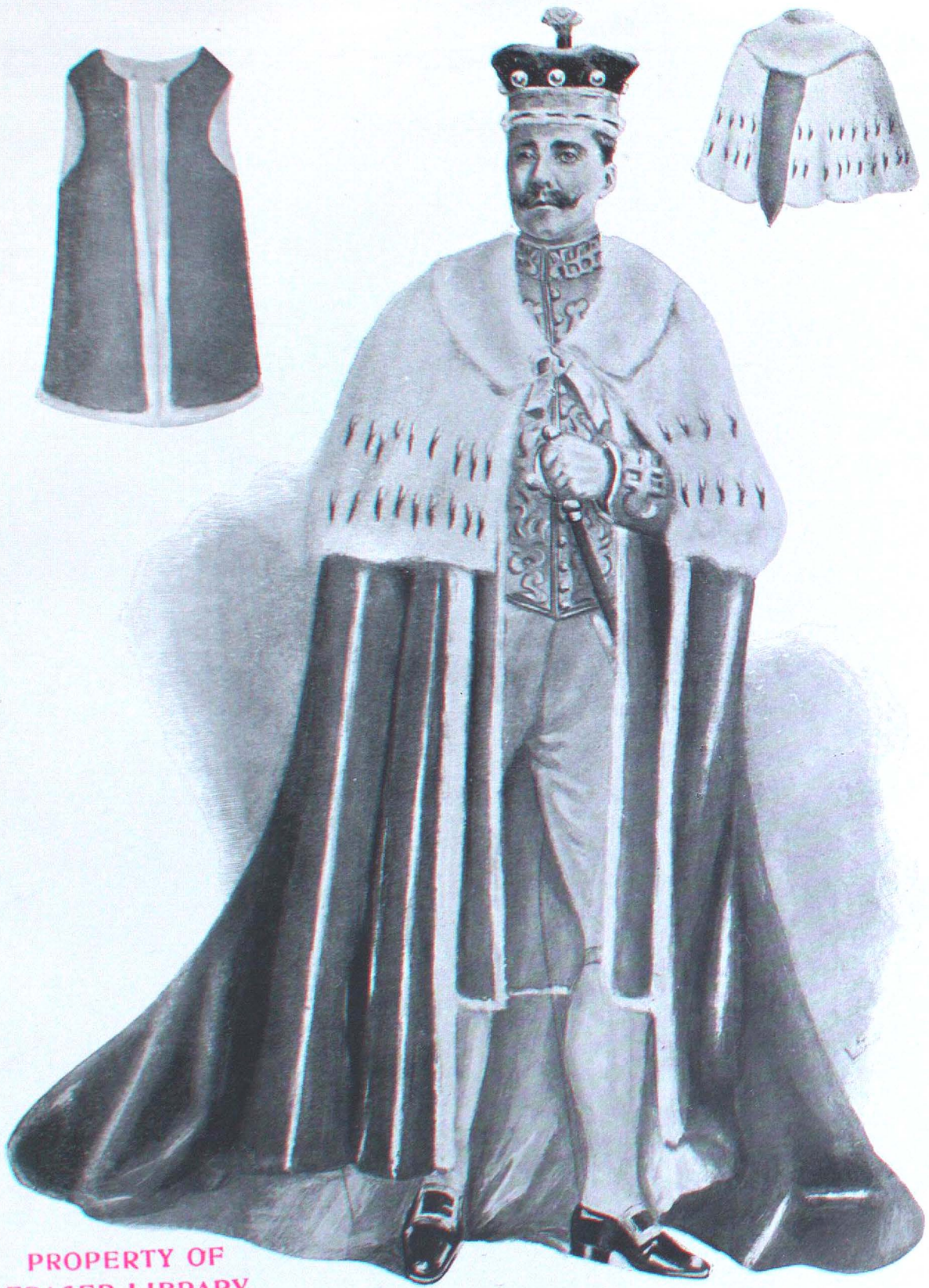
THE BLACK BRUNSWICKER.
Painted by Millais.



PROPERTY OF
FRASER LIBRARY

THE HUGUENOTS.

Painted by Millais.



PROPERTY OF
FRASER LIBRARY

A PEER'S CORONATION ROBE.—BARON.

HUNGARIAN.—Scarlet jacket, braided across the front. Tight-fitting breeches. Hessian boots. Shell jacket of white cloth, braided gold and edged with fur. Astracan fur cap with a plume.—DH 2/0.

HUNTSMAN, FRANCIS I.—Leather jerkin made with short sleeves, the sleeves being cut round in notches and rolled under, forming an epaulet. The under sleeves of white cloth trimmed with bands of gold, and finished at the shoulder with a short puffed sleeve of blue. Crimson satin breeches. Silk tights and low shoes. Blue belt embroidered with silver, carrying a straight sword and a horn. Flat velvet cap with a feather. Spear.—LC 15 1/6.

HUNTSMAN (GROTESQUE, FROM LES BRACONNIERS). Coat in blue satin with a high deep collar, cut away from the skirt in front, and trimmed round with very wide gold braid. Large pocket flaps, and deep cuffs trimmed to match. Single-breasted waistcoat to match the coat. Scarlet plush knee breeches. High boots with buff tops. Wide cravat, and deep frill to the shirt front. Powdered hair. Jockey cap with a high crown. Very wide belt and buckle.—T 25 1/6.

IAGO.—Breeches and tights. Vest buttoned up the back. Doublet open down the front. Puffed sleeves and short cape. Sword and belt. Low shoes. Flat cap, with a brim. Venetian. *See Illustration.*

INCROYABLE.—*Illustrated.* Green short-waisted coat, with long tails lined with pink, made with a wide collar and revers, and trimmed with large buttons. Double-breasted waistcoat with large revers, open in front. Lace muslin cravat, covering the chin. Pantaloon of drab cloth, with a gold chain and seal hanging from each fob. Striped stockings and low shoes. Twisted stick. Powdered hair and gendarme hat.—BM 2 1/6. *See also* TRENTZ.

INCROYABLE.—Directoire Period. In this later period the shape of the coat is altered, and is more of the double-breasted coat than the former long tail cut-away style. There is no seam, however, on the hips, and therefore the skirts do not meet in front, but shape off like a morning coat of present style. It is, however, made with a high deep collar and wide revers, faced with silk, and bound with another colour. Double-breasted waistcoat of green and white stripe. Lace cravat round the throat. Green cloth knee-breeches, fastened at the knee with coloured ribbon. White silk stockings and low shoes. Gendarme hat, trimmed with a tricoloured cockade. Eyeglass and twisted stick.—NCH 21 1/6.

INDIAN CHIEF.—*Illustrated.* Bearskin round the loins, fastened with a scarf of coloured material.

Mocassins reaching up the thighs, ornamented with colour and quills. The upper part of the body is covered with a silk singlet painted in various colours, and ornamented with necklaces of various kinds of beads and bears' teeth. Large red skin cloak. Feather in the hair. Tomahawk.—CE 66 1/6.

INDIAN PRINCE.—*See* ALIM.

ISOLIN (FROM JEAN DE NEVILLE).—Costume of the period of Henry IV. Short close-fitting tunic of scarlet cloth, made with a puff at the shoulders, the sleeves being made in brocade. Belt round the waist, with a dagger. Short cloak of scarlet, lined with fur. This is made like a straight bib hanging back and front, without sleeves, and fastened at the back. Grey long hose. Low pointed shoes. Cap of maintenance.—T 244 1/6.

ITALIAN BRIGAND.—Short jacket of blue cloth, bound with silk. Scarlet waistcoat. Drab cloth knee breeches, tied round the waist with a fancy striped scarf. Gaiters of linen, wound round the leg, and bound round with cord. Large cloak. Sugarloaf hat.—N 79 1/6. *See also* FRA DIAVOLO, BRIGAND, and BANDIT.

ITALIAN FISHERMAN.—*Illustrated.* Red shirt. Short trousers of blue and white striped cotton, fastened round the waist with a blue sash. Jelly-bag cap. Gold earrings.—N 59 1/6.

ITALIAN IMAGE SELLER.—*Illustrated.* *See* PICCOLINO.

ITALIAN PEASANT.—Short cloth jacket, ornamented with buttons. High double-breasted waistcoat. Knee breeches, fastened round the waist with a coloured sash. Sugarloaf hat. Gaiters. Low shoes with buckles.—N 39 1/6.

JAMES I.—Doublet and knee-breeches. Tights. Short cape. Muslin frill. High-pointed or Guy Fawkes' hat

JAMES II.—Long, full coat, with wide skirts, pockets, and cuffs. Knee breeches. Low shoes. Silk stockings. Wig of long hair. Three-cornered hat, trimmed with feather trimming.

JAPANESE JUGGLER.—*See* FITZO.

JEAN DE MONTAIGN, 1408.—Tunic of plaited blue velvet, embroidered with gold round the neck, and edged with a band of fur. It is fastened at the waist with a girdle, from which is suspended a dagger. The sleeves are double. Close-fitting under sleeve in gold-coloured silk. Over-sleeve cut very full, forming an epaulet, edged and lined with fur. Red silk tights. Low pointed shoes. Wide hat, ornamented with jewels.—CH 6 1/6.

JEAN DE NIVELLE.—*Illustrated.*—Tunic of red cloth, with long sleeves, fastened round the waist with a belt. Blue cloth cape. Blue tights. High



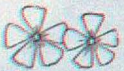
HAMLET.

Black silk hose.
Low shoes,
strapped over the
instep. Tunic of
black velvet, fas-
tened round the
waist by a jewelled
belt. Sword belt to
match. On the right



hip is suspended a
dagger and purse.
The neck is open,
showing a white
cambric shirt.
Sleeves slashed from
the elbow to wrist,
showing full shirt
sleeves. Wide cloak
of black cloth.

**PROPERTY OF
FRASER LIBRARY**



HAMLET.





PROPERTY OF
FRASER LIBRARY

HYMEN.

WORSTED hose, latticed round the legs with leather thongs. Ankle shoes, pointed.
Long white linen tunic, tied round the waist; long sleeves, open to the
shoulders. Harp. Wreath of laurel leaves.



INDIAN CHIEF.

PROPERTY OF FRASER LIBRARY



ITALIAN FISHERMAN.



INCROYABLE.



JESTER

PROPERTY OF FRASER LIBRARY



IMAGE BOY.

R. B. M. Co.



Hearts
KING OF SPADES.



JEAN DE NIVELLE.



KING OF HEARTS: *spades*



KING OF DIAMONDS.



KING OF CLUBS

PROPERTY OF
FRASER LIBRARY.

PROPERTY OF
FRASER LIBRARY

Al. S. 1861. 1/2

boots. Cap of maintenance. This costume would also do for the disguised Rosalind, in "As You Like It." Shoes in place of boots.—T 245 1/6.

JESTER.—*Illustrated.* Doublet and trunks of yellow satin, with puffs of white muslin at the elbows, fastened round the waist with a belt. Bands of pink satin, cut in long points, edged with gold braid, and tipped with bells, are placed round the waist, knees, neck and arms. The cap is also cut in long points to match bauble.—BM 192 1/6. See also FOOL and RIGOLETTO.

JOAN OF ARC, TIME OF.—See CHARLES VII.

JOCKEY.—Tight-fitting jacket of silk, in colours according to those registered by the owner of the horse. Leathers. Boots. Close-fitting cap with a prominent peak, also made in silk of the owner's colours.

JOCONDE.—A pretty light dancing costume, of early 15th century period. Tunic of black velvet, opened at the throat, and trimmed with a roll collar of blue silk. It is made double-breasted, and fastened with gold buttons, edged round the bottom with a band of ermine. Round the waist is a sword belt of gold braid. The open space at the neck is filled with a plaiting of muslin. Ermine epaulets. The sleeves are very full, made in light blue satin, and fastened round with narrow bands to form four puffs. Velvet cap, with feather. Light blue silk tights. Low shoes.—T 150 1/6.

JOHN BULL.—See PICKWICK.

JONATHAN WILD.—See DELICAT.

JOSEPH SURFACE.—Suit in black or a dark colour, the same pattern as that illustrated GENTLEMAN, GEORGE III.

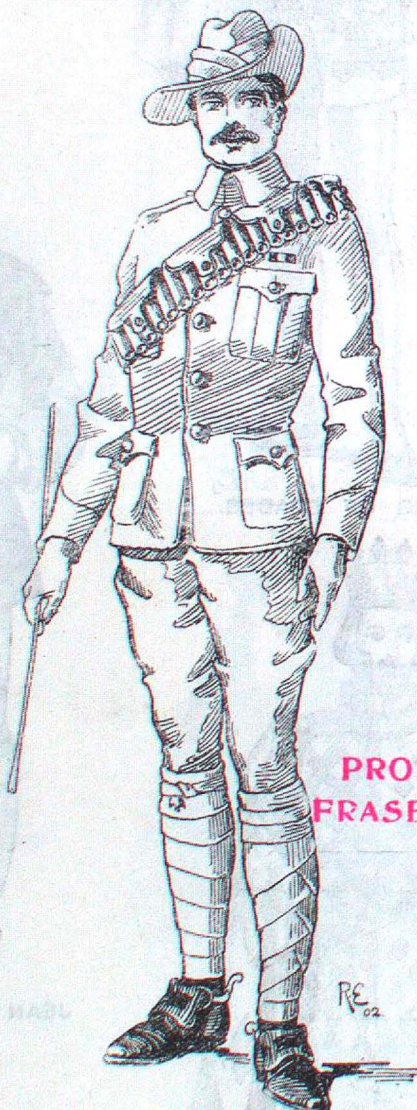
JOYEUSE, DUC DE.—Costume Henry III. of France. Brown silk doublet, with a plaited basque, fastened round the waist with a belt. Long trunks, fastened at the knee, and trimmed with a roll, an ornament of gold braid being placed down the side. Short cloak lined blue, and bound with gold braid. Deep plaited ruffle. High hat, trimmed with a plume. Silk tights. Low brown velvet shoes. A star suspended round the neck by a blue ribbon.—NCH 7 1/6.

JULIUS CÆSAR.—See ROMAN.

JUPITER (FROM ORPHÉE AUX ENFERS).—Tunic of white silk, embroidered with a large gold sun in the centre, surrounded by smaller suns, and a deep border round the hem. It is fastened round the breast by a jewelled girdle. Double sleeves, the upper part being short to the elbow, and loose; both embroidered with gold. White silk tights, embroidered with gold stars. Large

mantle of crimson satin, fastened round the neck, and forming a train, embroidered all over with gold. Tiara of white silk, jewelled. Boots to match the hose. Long stick, with a gold and jewelled head.—T 48 1/6.

KABYLE, ALGIERS.—Shirt and loin cloth of white linen. Gaiters protecting the calf of the leg. Sandal shoes. Large Burnouse cloak. Belt round the waist, with a long knife. Long gun.—N 60 1/6.



KHAKI.

KHAKI.—A soldier during the Boer War. See *Illustration.*

KING OF CLUBS.—A costume of the period of Henry V. Shaped tunic with a skirt, made one side in velvet and the other side in gold cloth, each

PROPERTY OF
FRASER LIBRARY

ornamented with clubs, black on the gold and gold on the black, with a centre ornament or plastron of velvet, ornamented with gold braid, and edged with a fancy braid. It is sloped off at the waist, and forms a point. The skirt is made

sleeves of green and crimson cloth or silk. Full over-sleeves, each in a different colour, braid gold, and each ornamented with a large club. Parti-colour hose. Low pointed shoes. Cap of maintenance trimmed with ermine, and a gold crown.



KING OF CLUBS.—*Illustrated.* Close-fitting tunic made in parti-colour, with hanging sleeves, ornamented with clubs and gold braid. Gold sword belt. High crown, ornamented with clubs. Plain silk tights and low shoes.

KING OF DIAMONDS.—*Illustrated.* Shaped tunic made in parti-colour, trimmed with diamond-shaped ornaments. Close-fitting sleeves, with full epaulet pieces. Particolour silk tights. Tan leather boots. Cavalier cloak. Crown, ornamented with diamonds.

KING OF THE GIPSIES.—A fancy costume worn in Joan of Arc. Tunic of amber cloth made with short sleeves, and fastened round the waist with a belt. Scarlet cloth knee breeches. Gaiters of black and white stripe. Long cloak suspended at the back, composed of strips of various coloured cloth or satin. Large felt hat, trimmed with a feather.—T 136 1/6.

KING OF HEARTS.—*Illustrated.* Shaped tunic, made in parti-colour, trimmed with hearts, and edged with key-pattern braid. Close fitting sleeves, with over-sleeves, trimmed ermine. Waistbelt, with heart-shaped purse and dagger. Particolour tights. Low shoes. Crown tipped with hearts.

KING OF LAHORE.—*See HINDOO PRINCE and SCINDIA.*

KING OF SPADES.—*Illustrated.* Shaped tunic, made in parti-colour, and trimmed with spade ornaments. Close sleeves, with epaulets. Sword belt, with a spade-shape purse. Cavalier cloak. High boots, in tan leather. Silk tights. Crown tipped with spades.

KNIGHT IN ARMOUR.—*See ORSO SAVAGNANO.*

LAST OF THE DANDIES.—*See Illustration on page 48.*

LEICESTER, EARL OF.—Same style of costume as shown for the Comte de Nevers; also, styles Henry III. and IV.; also Lord Darnley, and Comte de Nevers.

LEONARDO DA VINCI.—*See Illustration.*

LEOPOLD (FROM LA JUIVE).—Tunic, with a plaited skirt of brown cloth, fastened round the waist with a belt. Short cape of scarlet. Round hat. Violet silk tights. Laced boots. This would do for Rosalind's male costume in "As You Like It," and is also the same style of costume for Robin Hood.—T 111 1/6.

PROPERTY OF
FRASER LIBRARY

KING OF CLUBS.

parti-colour, red on the black side, and green on the gold, ornamented with arcs of black velvet, braided gold, the join being made neat with a waistband of gold, to which is attached a velvet purse bag and a dagger. Tight-fitting under-

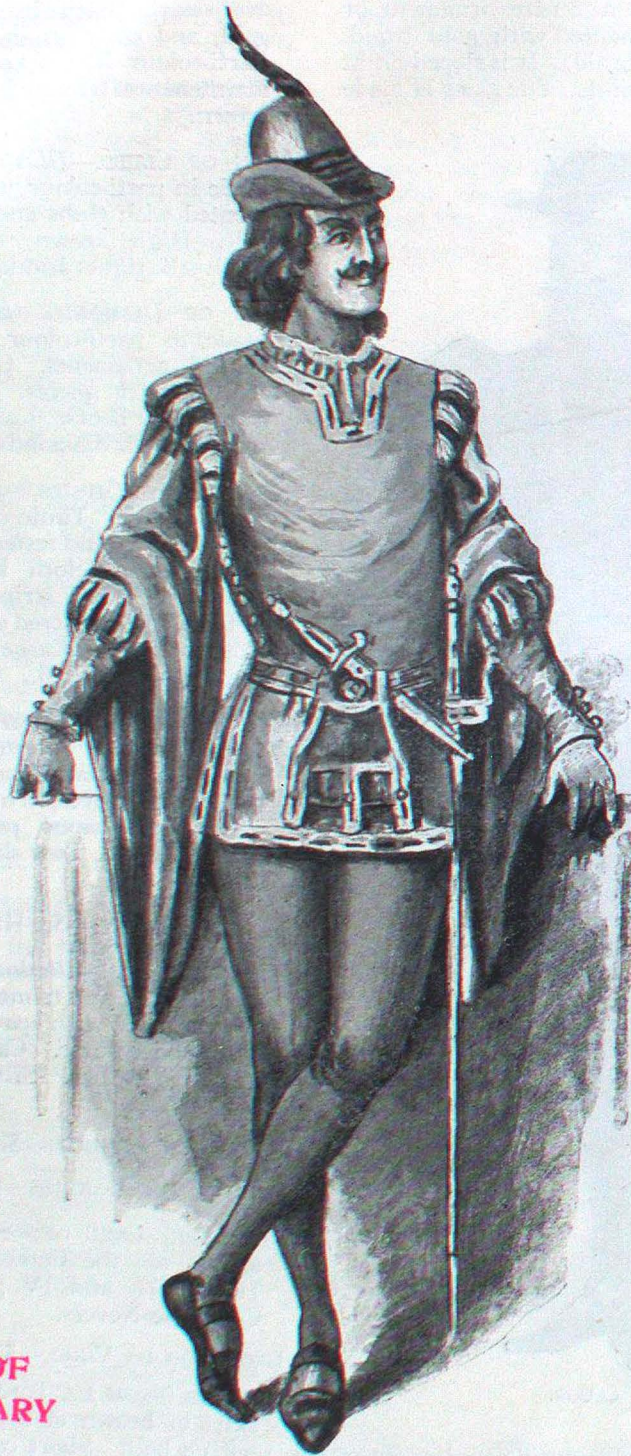


IAGO.

Silk tights and leather shoes. Tunic of plain silk, trimmed with ermine. Double sleeves, the under sleeve being slashed, the upper sleeve hanging bell-shape, turned back on the



PROPERTY OF
FRASER LIBRARY



upper part and lined. Epaulettes. Felt cap. Sword belt with a dagger and purse.

Quantity of 22-inch silk required for tunic and sleeves, 9 yards; 22-inch silk for lining, 4½ yards; ermine, 6 yards.



IAGO.



DUKE OF ILLYRIA.

ORSINO.

Doublet made in white brocaded and crimson brocaded silk, fitting close to the figure to which is joined a full skirt made in white silk, trimmed with a band of crimson and gold brocaded silk. Puffed sleeves. Surtout of blue satin brocaded with gold made with full puffed half-sleeves, and ornamented with a deep collar and broad facings of ermine. Lace ruffle round the neck. Orders and badges. Jewelled sword belt. Slash trunks. Silk tights. Blue satin shoes.

PROPERTY OF
FRASER LIBRARY



A JESTER
(TOUCHSTONE).

PARTI-COLOUR hose. Pointed shoes, trimmed with bells. Parti-colour tunic of green and white satin, trimmed with a cape of pink and white, cut all round in deep points, each tipped with a bell. Double sleeves, the under-sleeves being made in parti-colour, and the over-sleeves one of each colour white and green, cut round in points, and tipped with bells. Hood trimmed to represent a cock's comb. Fco.'s bauble.



KNIGHT IN ARMOUR.

COMPLETE suit of armour consisting of a helmet with beaver ornamented with plumes. Pauldrons or shoulder-pieces. Breastplate cuirass. Rere braces. Coudes or elbow-plates. Vambrace. Gauntlets. Skirt of taces. Tuilles. Cuisses. Genouillères or knee-pieces. Jambes. Spur-straps. Sollerets. Jewelled cross-belt round the waist supporting a sword and dagger.

Tabard of cloth embroidered blue and scarlet. Full military cloak fastened with a jewelled brooch.

PROPERTY OF
FRASER LIBRARY

Armour can be
supplied by Messrs.
Robert White &
Sons, 43, Drury
Lane, London, W.C.

KNIGHT IN ARMOUR.

LEPORELLO.—Jacket of green satin, fastened round the waist with a belt, bound round with yellow, and ornamented with a black ball fringe. Coat sleeves, trimmed down both seams with yellow. Epaulets. Trunks of the same, ornamented down the sides. Breeches of slate satin, fastened at the knee, and trimmed down the sides with yellow and fringe. White stockings. Low shoes. White linen collar and cuffs. Broad hat and large cloak.—T 120 1/6.

LIEUTENANT DU DIABLE.—Doublet of black velvet, trimmed with a plastron of scarlet down the front, braided across with black. Double sleeves, the under sleeves barred round with bands of gold braid, the upper sleeves hanging down square, lined with scarlet, and braided with gold. Knickerbockers, fastened at the knee, trimmed with a broad stripe of scarlet, braided with gold. Scarlet stockings, striped black. Laced boots.—BM 31 1/6.

LOHENGRIN (THE SWAN KNIGHT).—Close-fitting tunic with tights of silver cloth, to represent armour. Silver helmet. Long cloak of blue velvet, lined with white. Shield ornamented with swan. Sword and belt.—T 385 1/6.

LORD OF THE ISLES.—A Scotch costume.

LORRAINE NOBLE, 1625.—Doublet of red satin, and bag breeches to match, fastened at the knee, finished off with rosettes. Cloak of blue satin, trimmed with fur. Red silk stockings, and low shoes with rosettes.—CH 40 1/6.

LOUIS XII.—Page. *Illustrated.* Silk tights, low shoes, fastened with straps. Close-fitting tunic of velvet, with full sleeves. Over-mantle of velvet, trimmed gold braid. This is open down the sides.

LOUIS XII.—Bourgeois. Tunic of cloth, with full sleeves. Overcoat, plaited in at the neck, and

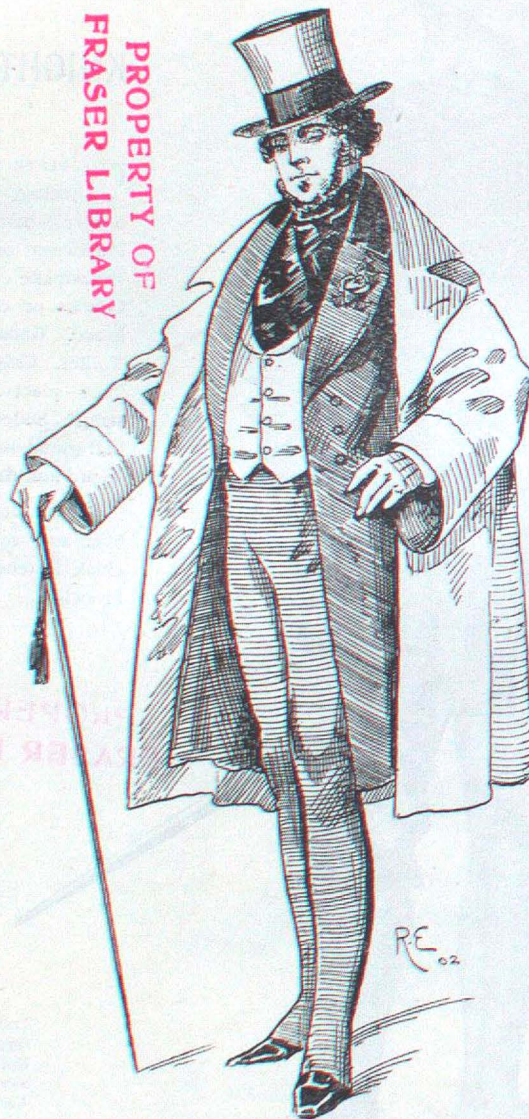
so hanging full; made with long hanging sleeves, lined and edged with fur. Close cap.—CH 20 1/6.

LOUIS XIII.—See CAVALIER.

LOUIS XIV.—Gentleman. With the male costume there were great changes during this period. In the early part of this reign we get the last of the

Cavalier costume, succeeded by the skirt, and afterwards the long coat with full skirts of James II. and William and Mary period. Later on we get the very long wig of the Duke of Marlborough character, and in the following reign the full coat with deep cuff and large pocket flaps.—Walking costume in blue satin. Short jacket, with full skirt showing underneath. Full breeches fastened at the knee, and edged by a frill, trimmed down the sides with bows of coloured ribbon. White silk stockings and low shoes. Large hat and long wig.—NCH 18 1/6.

LOUIS XIV.—Gentleman of the Court. Short jacket of satin, the sleeves of which are open from the wrist to the shoulder, showing the shirt sleeves. Knee breeches, edged with lace. Petticoat covering the breeches, made full and edged with a ruching. The jacket is short of the skirt by some inches; this, however, gives an opportunity for the display of the white cambric shirt, which is drawn out full all round the waist. Lace cravat. Long-haired wig.—NCH 3 1/6.



THE LAST OF THE DANDIES—(Mr. Beerbohm-Tree).

LOUIS XIV., 1670.—Long coat of blue satin reaching to the knees, braided with silver, and tied round the waist with a scarf. Gold-embroidered sword belt. The sleeves are of the same material as the coat, so far as the elbows; they are then trimmed round with a plaiting. Full under sleeves of pink, terminating in lace cuffs. Full knee breeches. High jack

- boots. Long wig, and broad-brimmed hat.—L C 5 1/6.
- LOUIS XIV.—Gentleman of the king's household, 1672. Coat, in scarlet satin or plush trimmed with vertical bands of silver embroidery, and edged round with a coloured fringe. Sleeves puffed from the elbow to the wrist, and trimmed with lace. Embroidered sword belt. Full breeches, edged with a frill. White silk stockings, and low shoes. Long wig. Long cane.—L C 2 1/6.
- LOUIS XIV., 1700.—Chevalier à la mode. Under coat of broché silk fastened close to the neck. Long coat with full skirts, braided, open down the front, but fastened in the skirt. Sleeves fastened by bows at the elbow, and split open to show an under sleeve. Knee breeches. Blue stockings, and shoes. Long wig. Walking cane, and sword.—C H 54 1/6.
- LOUIS XIV., 1706.—Chevalier de St. Louis. Coat of lavender silk fastened close up to the throat, made with large pocket and full skirts. Knee breeches. Over coat very full, made in scarlet cloth, and trimmed with a deep collar and gold braid. The sleeves are wide, and braided with gold. Silk stockings and low shoes, with red heels. Lace cravat. Wide hat.—C H 55 1/6.
- LOUIS XIV.—See also FABRICE.
- LOUIS XV.—Gentleman, 1740. Long waistcoat of brocaded white silk, full on the hips, and reaching to the top of the stockings, edged with gold fringe. Single-breasted coat of plum-coloured silk, brocaded or plain. The skirts of the coat are made full, with large pocket flaps. Sleeves trimmed with very deep cuffs of brocade to match the waistcoat. Silk knee breeches. Long silk stockings gartered over the knee and end of the breeches. Low shoes, with buckles. Powdered hair, tied at the back with a bow of black ribbon.—C H 62 1/6.
- LOUIS XV.—Later period, in which the waistcoat is shorter, and there is an alteration in the cut of the coat, the skirt not being so full nor so much cut away from the front. Coat of brown velvet, somewhat of the shape of a single-breasted frock coat; trimmed with gold braid and buttons. Pocket flaps embroidered with gold. Deep cuffs, with lace frills. Long straight waistcoat of white silk, embroidered and bound with gold braid. Lace cravat. Knee breeches. White stockings, brought over the knees and covering the ends of the breeches. Low buckle shoes, with red heels. Powdered hair.—N C H 22. 1/6.
- LOUIS XV.—Marquis. Coat of plum-coloured velvet, buttoned on the chest and sloped off, trimmed with gold braid. Narrow pocket flaps trimmed gold braid. Sleeves with deep cuffs of blue silk trimmed with gold braid. Long waistcoat of brocaded silk edged with gold braid, and made with pockets, covered by deep flaps and braided. Knee breeches of plum-coloured velvet. White silk stockings covering the ends of the breeches. Lace jabot. Three-cornered hat, trimmed with gold lace and white feathers. Low buckle shoes, with red heels. Hair powdered, and tied at the back with a bow of black ribbon.—N C H 6 1/6.
- LOUIS XVI., 1775.—Gentleman. Coat of scarlet silk, trimmed with silver braid. Wide pocket flap, trimmed with the same. Vest of the same, and knee breeches. White silk stockings, fastened at the knee. Low buckle shoes. Powdered hair, trimmed at the back with a black bow.—C H 60 1/6.
- LOUIS XVI., 1790. Cut-away coat with long tails, made in blue cloth and edged with gold braid, High turned-down collar, and deep cuffs to the sleeves. Single-breasted waistcoat buttoned to the throat. White lace cravat. Knee breeches of buff cloth. White stockings. High boots, with buff tops. Hair short in the front and sides, and hanging in a tail at the back.—L C 20 1/6.
- LOUIS XVI., 1792.—Revolution. Double-breasted coat with large collar, wide revers and long tails, made in drab cloth. White waistcoat. Salmon-coloured knee breeches. High boots with salmon-coloured tops. High conical hat, with a rather wide brim. White linen cravat.—C H 80 1/6.
- LOUIS XVI.—The same shape as the present Court style. Coat in ruby plush with upright collar, trimmed all round with gold lace. The front of the coat is cut away. Vest of white, trimmed with gold braid. Lace cravat. Knee breeches of ruby plush. White silk stockings gartered at the knee. Low shoes, with buckles. Hair powdered, and tied with a black ribbon bow at the back.—N C H 9 1/6.
- LOUIS XVI.—Quadrilles. Four couples from the ballet in "Les Contes D'Hoffmann." The ladies wear short costumes, made and trimmed in various colours. Long pointed bodies and bunched tunics open in the front, the bodies being trimmed with fichus. The hair is not powdered, but dressed out very full, and very large hats in various colours cover the heads. The gentlemen's costumes are coats of the same pattern as our present Court suits, made in various colours. Vest and knee breeches. Stockings and low buckle shoes. Powdered hair and gendarme hats.—T 271, 272, 273, 274, 1/6 each.
- LOUIS XVI.—See also BALSAMO.

XII

PROPERTY OF FRASER LIBRARY



LESURGES.



LOMBARDY.



LEONARDO DA VINCI.



LOUIS XVIII.

PROPERTY OF FRASER LIBRARY



LOUIS XII, (Page).

R. B. ...



MEPHISTOPHELES.

PROPERTY OF FRASER LIBRARY



MARQUIS.



MONK.



MALTESE KNIGHT.

PROPERTY OF FRASER LIBRARY



MANDARIN.

R. B. J. 1876

MACBETH.

TUNIC made of brown cloth embroidered round the hem; over which is worn a skirt of chain mail. (This is imitated in armour cloth.) Round the waist is a belt sustaining a dagger and a sword.



Tartan plaid. Target shield. Steel cap with a plume. Cloth gaiters, gathered and laced, with cord leather shoes.

Quantity of 54-inch cloth required, $2\frac{3}{4}$ yards; 18-inch armour cloth, 6 yards.

PROPERTY OF
FRASER LIBRARY

MACBETH.



PROPERTY OF
FRASER LIBRARY

MALVOLIO.

DOUBLET of light brown silk, quilted or latticed with gold braid. Pink silk sleeve puffed at the shoulders, and slashed with brown. Trunks slashed to match. Brown silk tights, cross-gartered. Low shoes.

- LOUIS XVIII., 1820.—Lady and Gentleman. Round skirt of white silk trimmed with two full flounces. Short full body of drab silk with tight sleeves puffed at the shoulder. Long white silk neckerchief with a coloured border. Lace frill round the neck. Coal-scuttle bonnet trimmed with lilac. The gentleman's costume is a coat of blue cloth with swallow tails, trimmed with a deep collar and brass buttons. White duck waistcoat and trousers. The trousers reach only to the ankle, exposing the white socks. Low shoes. Beaver hat, bell-shaped.—CH 94 1/6.
- LOUIS XVIII.—*Illustrated*. Blue cloth. Cutaway coat with long tails, and high collar. Vest to match. High collar and cravat. Trousers rather short, with straps. Wellington boots. Beaver hat.
- LOUIS PHILIPPE. *See also* WILLIAM IV.
- LOUP GAROU.—Doublet of black velvet, faced with scarlet, edged on each side with an embroidery in gold, and fastened round the waist with a belt. Breeches fastened at the knee, braided with gold down the side. Short satin cloak, lined with scarlet and braided with gold. Scarlet stockings and low buckle shoes. Pointed cap, trimmed with two scarlet feathers.—BM 129 1/6.
- MACAIRE, ROBERT.—A similar costume to that illustrated Louis XVIII., but patched and tattered. A seedy dandy or fop.
- MACBETH.—*Illustrated*. A loose tunic reaching to the knees, tied round the waist with a girdle. Flesh tights, bound with cross bands. Sandals. For the king's dress the addition of a cloak lined ermine and fastened at the throat. Gold circlet on the head.
- MACHEATH, CAPTAIN.—*See* costume DAVID GARRICK, but with boots, and made in bright colours.
- MAGICIAN.—Tunic of crimson satin embroidered with gold. Full sleeves in graduated puffs. Loose over tunic cut in long points all round and edged with gold braid, made with a deep collar of fur and hanging sleeves. Sugarloaf hat, trimmed with gold and an owl's head. Wand. Crimson tights and low shoes.—BM 421/6.
- MAGYAR.—Jacket of scarlet satin, fastened round the waist with a blue silk sash. It is cut with a V opening in front, filled in with a plaiting of white silk, and laced across with gold braid, embroidered round the opening with gold. Loose sleeves, embroidered with gold, and edged with lace. Knickerbockers of drab cloth, embroidered with gold down the side. High boots. Round fur cap, with a jelly-bag top of blue cloth.—BM 135 1/6. *See also* HUNGARIAN.
- MALTA, KNIGHT OF.—*Illustrated*. Black velvet tunic and breeches. Epaulets. Short cape. High boots with spurs. Flat cap with a small plume. Maltese cross suspended by a ribbon round the neck.
- MANDARIN.—*Illustrated*. Loose robe of green silk, over which is worn another robe of rich broché in scarlet and gold. Tight-fitting trousers, to resemble hose.
- MANDARIN.—*See* CHINESE.
- MAN-O'-WAR'S MAN.—*See* SAILOR.
- MANRICO (FROM IL TROVATORE).—Close-fitting jerkin of buff leather or satin, with sleeves of a different colour, slashed on the upper part of the arm; edged with fur round the collar and edge. Fur epaulets. Tights of particolour silk. Laced boots trimmed with fur. Wide jewelled sword belt. Gold collar, and fillet of gold round the head.—OT 732 1/6.
- MARCEL.—*See* HUGUENOTS.
- MARCO SPADO.—*See* BRIGAND.
- MARIN D'EAU DOUCE.—Red shirt, with a turn down collar tied with a scarf. Loose trousers, tied round the waist with a blue silk scarf. Black cloth jacket, trimmed with brass buttons. Striped stockings. Low shoes, and straw hat.—BM 92 1/6.
- MARLBOROUGH, DUKE OF.—Costume of the period Queen Anne. Square cut coat with long waistcoat. Very deep cuffs. Very long wig, not powdered. Square-toed shoes or boots. Sash over the right shoulder. Knee breeches. Silk stockings. Cloaked. Three-cornered hat.
- MARLBOROUGH PAGE.—A similar costume to that described above, but with shoes and without the sash.—BM 155 1/6.
- MARQUIS.—*See* LOUIS XV. and XVI.
- MARQUIS.—*Illustrated*. STYLE GEORGE III. AND LOUIS XV. Powder. Long silk vest, embroidered. Coat with full skirts, also embroidered down the front and pocket flaps. Sleeves with wide cuffs. Knee breeches of silk. White silk stockings, drawn over the breeches, above the knee. Low shoes. Lace ruffles and cravat. Powdered wig, with a pig-tail tied with a black silk bow. Sword and stick.
- MASANIELLO.—*See* ITALIAN FISHERMAN and NEAPOLITAN.
- MASHER (1884).—*Illustrated*. Knee breeches of black satin. White vest cut low to show a great deal of shirt front. Evening dress coat. High round collar. White tie. Low hat with a wide curled brim. Black silk stockings. Pumps. Eye-glass.

MASTER OF RAVENSWOOD.—*See* EDGAR.

MATADOR.—*See* SPANISH.

MEPHISTOPHELES (FROM FAUST).—Costume in scarlet of the period of Henri Quatre. Doublet of scarlet. Satin trunks to match. Scarlet silk tights and red shoes. Black velvet cloak, lined with scarlet. Pointed scarlet cap, trimmed with a black velvet band and two feathers.—T I 1/6.

MEPHISTOPHELES.—Doublet of scarlet satin, slashed trunks to match. Scarlet silk tights. Scarlet cape, short, with a high collar. Cape forming a point in front, with two scarlet feathers.—B M 1/6.

MERCHANT OF VENICE.—*See* SHYLOCK.

MERCURY.—Loose linen tunic, reaching to the knees, and fastened round the waist with a girdle. Close fitting cap, with a wing each side. Flesh tights. Sandals.

MEXICANS.—Male and female. Long full trousers of brown cloth, slit open on the outside seam, and filled in with an embroidered piece, trimmed down the seam with gold buttons and braid. The fronts of the trousers are also embroidered, and fastened round the waist with a sash. Full shirt. Short jacket, showing the shirt scalloped round, and trimmed with a small cape, all edged with gold braid. Large blue cloak, lined red, and trimmed with gold fringe and braid. The female costume is a short skirt of pink satin, lengthened with a deep flounce of white, scalloped out, and trimmed with bands of blue and a ruche. Each scallop is trimmed with an embroidered spray of flowers. Full muslin chemisette. Short sleeveless jacket, braided with scarlet, and ornamented with gold. Short puffed muslin sleeves. Striped shawl. The hair is twisted with a striped silk scarf. Low shoes, with white stockings. Ornaments: coral earrings and necklace.—O N 14 2/.

MICHAEL SOUTZO, PRINCE OF MOLDAVIA, 1820.—Long robe of crimson broché, reaching to the feet and fastened round the waist with a silk scarf. Short jacket of black velvet, trimmed with an embroidered band. Loose over robe of blue velvet, made with wide sleeves, and trimmed with a deep band of fur. Black fur hat, with a high crown of blue velvet.—C E 81 1/6.

MICHAEL STROGOFF.—*See* DANICHEFF.

MIGNON.—*See* HENRY III.

MIRLITON.—Shaped tunic and tights, both striped to represent bands wound round the body like a mirliton. Pointed cap in imitation. Long mirliton in the hand.

MOHAMET IBRAHAM, 1665.—Loose robe of muslin or cambric, striped with gold, fastened round the waist with a sash. Tunic of green brocaded silk trimmed with gold braid, and fastened round the waist by a belt. Muslin turban, striped with green. High boots.—C E 54 1/6.

MOLDAVE.—Tunic of scarlet cloth, fastened round the waist with a belt, and trimmed round the neck and hem with an embroidered band. Sleeveless over jacket of black velvet. Black velvet knickerbockers. High boots, with scarlet tops. Round fur hat.—B M 16 1/6.

MONK.—*Illustrated*. Long full robe of serge or rough cloth, fastened round the waist by a cord. Cowl or hood, with a cape falling over the shoulders.

MONTAGNARD.—Tunic of drab cloth, fastened round the waist with a belt, open at the chest, and trimmed across with three bands of crimson satin. Deep collar and cuffs of the same. Knickerbockers of the same, trimmed with bands of crimson satin. Leg guards of the same. Felt hat, trimmed with a band of crimson.—B M 109 1/6.

MONTAGNARD DES EAUX-BONNES.—Red cloth jacket, thrown across the shoulder. Waistcoat of yellow cloth, fastened round the waist by a red silk scarf. Black cloth knee-breeches. Gaiters, with frilling falling over the instep. Large woollen cap, like a Scotch bonnet. Climbing staff in the hand.—N 55 1/6.

MONTROSE, DUKE OF.—Costume of the time of William III.

MOOR (FROM GIROFLE GIROFLA).—*Illustrated*. Robe of white and red striped silk, reaching mid-leg, fastened round the waist with a striped sash, and ornamented round the bottom with a deep red and yellow fringe. Green burnouse cloak, with a gold stripe, edged with yellow ball fringe. Striped turban, with a half-moon brooch. Gold anklets, and low shoes.—T 66 1/6. *See* OTHELLO.

MULETEER.—Short brown cloth jacket, embroidered in amber, blue and red very elaborately, the sleeve cuffs being also embroidered. Waistcoat of black cloth, trimmed round with gold braid, and fastened round the waist with a sash of blue silk. Light brown cloth knee-breeches, braided down the side seam, turned back at the knees, and faced blue. Gaiters of embroidered cloth. Pointed hat, trimmed with a cord of black and scarlet.—B M 48 1/6.

MULETEER.—Postillion jacket of green velvet, with collar and lapels of black, trimmed with brass buttons. Green vest, fastened round the waist with a striped sash edged with fringe. Brown velvet breeches, buttoned at the knees. Brown

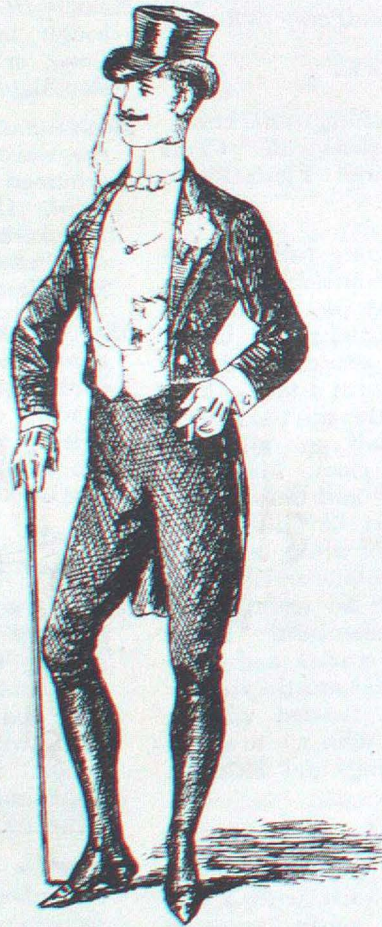


NORWEGIAN.

PROPERTY OF FRASER LIBRARY



NEAPOLITAN.



MASHER.

PROPERTY OF FRASER LIBRARY



NAVARIAN.



NIGGER.

R. B. Cook



OSBALDISTON.

PROPERTY OF FRASER LIBRARY



OLIVER CROMWELL.



OTHELLO.

PROPERTY OF FRASER LIBRARY



ORLANDO.



QUACK.

- leather gaiters. Striped wrapper. The hair is tied in a crimson silk handkerchief. Round felt turban hat.—B M 120 1/6.
- MUSCADIN.—Directoire Period.
- MUSKETEER.—Doublet of black velvet, with basque of white cloth braided with gold. The breast is embroidered with a large gold star. Sleeves of drab cloth slashed blue. Black velvet breeches, trimmed down the sides with gold braid, and tied at the knees. White silk stockings. Low shoes, with rosettes. Broad felt hat, trimmed with a large plume. White collar, edged with lace. Large red cloth cloak, lined drab, and braided with a cross on the left side.—B M 139 1/6.
- NABOB.—See SCINDIA.
- NAPOLEON.—See BUONAPARTE.
- NAVARE PEASANT.—*Illustrated*. Short jacket of scarlet cloth, trimmed with black braid and brass buttons. Knickerbockers, fastened round the waist with a sash.—Scarlet striped stockings. Low shoes. Red felt cap.—B M 9 1/6.
- NEAPOLITAN FISHERMAN.—Shirt and short trousers of white linen, fastened round the waist with a red silk sash. Red jelly-bag cap. Short cloth jacket, trimmed with an embroidered band carried over the shoulder.—B M 67 1/6.
- [Another style is a white loose shirt and blue striped trousers rolled up to the thighs, fastened round the waist with a red sash. Red jelly-bag cap, embroidered cloth jacket worn across the shoulders.—B M 15 1/6.]
- NEAPOLITAN FISHERMAN.—*Illustrated*.—Serge trousers reaching to the middle of the calf. Striped socks and low shoes. Round the waist is a sash. Loose flannel shirt. A net thrown over the shoulders. Jelly-bag cap.
- NEVERS, COMTE DE.—Doublet and trunks of white satin trimmed with stripes of gold braid, and fastened round the waist with a crimson velvet belt, bound with gold braid. Short cloak of crimson velvet, lined white silk, and trimmed with gold braid. White silk tights, and low shoes with a roll over the instep. Gold jewelled chain round the neck.—T 22 1/6.
- NIGGER.—*Illustrated*. (CHRISTY MINSTREL.) Trousers. Swallow-tailed coat with very long tails, and vest; all of a bright striped material, ornamented with large buttons. Large shirt-front. High collar and bright tie.
- NORWEGIAN.—*Illustrated*. Velvet breeches. White stockings. Low shoes. Embroidered waistcoat of a showy pattern. Cloth loose jacket, trimmed with braid. A leather strap is worn round the waist, with a knife in a case.
- NORWEGIANS, MALE AND FEMALE.—Scarlet tunic fastened round the waist with an embroidered belt, from which is suspended a powder-horn and hunting knife. Tight-fitting trousers of blue cloth. Red cloth cap with a blue band. Rifle. Married woman.—Short skirt of blue cashmere, trimmed with a band of the national colours—red, yellow and black—and trimmed with an apron in front. Plain high body. Muslin cap with a coloured top in a horn shape, and something after the shape of a Punch hat. Large cloak lined with fur.—O N 21 2/.
- OLIVER CROMWELL.—*Illustrated*. Buff jerkin of leather with a deep steel gorget. Knickerbockers. Jack boots. Long cloak. Wide-brimmed beaver hat. Sword and belt.
- OLIVETTE.—Captain de Merrimac. Velvet tunic with a trimming of gold braid. Epaulets. Broad silk sash round the waist. Sword belt. Velvet breeches. High boots. Broad linen collar. High hat with a plume.
- ORLANDO.—*Illustrated*. Cloth tunic, shaped with a skirt; fastened round the waist by a leather strap, carrying a purse and dagger. Worsted tights. Pointed shoes. Over the tunic is a cape and hood. Flat cap on the head.
- ORSO SAVAGNANO (FROM LA HAINE).—Costume for a knight in armour. Tunic with short sleeves, made in broché silk or velvet, and worn over a shirt of armour cloth. Steel breastplate and leg coverings. Waist and sword belt of crimson, embroidered with gold. Long cloak fastened on the shoulders, and falling loosely behind. Helmet trimmed with long plumes, and a white cross on the vizor.—T 77 1/6.
- OSBALDISTON.—*Illustrated*. Costume George II. Long embroidered vest. Coat with full skirts, and deep cuffs to the sleeves. Knee breeches. White silk stockings drawn up over the knee. Three-cornered hat, edged round with narrow feather trimming. Powdered wig, with a bow at the back.
- OSIP (FROM THE DANICHEFF).—A Russian costume. Long tunic of scarlet, over which is worn a kind of frock coat without sleeves, cut single-breasted and full in the skirt, and made in black velvet. Black velvet knickerbockers. High boots. Square top Russian cap.—T 128 1/6.
- OTHELLO.—Costume worn by Rossi. Sleeveless tunic of black satin, reaching just below the knee, trimmed with bands of gold braid round the neck. Cloak of white cashmere with armholes, trimmed also with a band of gold braid very wide, and fastened at the neck with a gold cord and tassels. Flesh-coloured tights. Low shoes. Anklets and bracelets.—T 130 1/6.



PROPERTY OF
FRASER LIBRARY

ORLANDO DE BOIS.

FROM "AS YOU LIKE IT."

TUNIC of brown cloth, cut square at the neck and filled in with cambric, fastened round the waist with a sword belt. Sleeves of reddish brown cloth, very full to the elbow. Brown silk hose. Low pointed shoes. Felt hat, with a plume.

OTHELLO.—*Illustrated.* See MOOR.

PAGE, ELIZABETHAN (FROM THE HUGUENOTS).

Doublet of black satin, braided in stripes, with gold under-sleeves of white silk braided in gold stripes. Loose hanging sleeves of black satin lined white, and barred with gold braid. Trunks of white silk braided with gold. White silk tights and shoes. Small black satin hat trimmed with a feather.—T 21 1/6.

PAGE (FROM LA MASCOTTE).—Tight-fitting body of white silk, embroidered in gold spots, and made with full sleeves of crimson satin, trimmed with stripes of black satin edged with gold braid. Trunks to match the sleeves. Pink silk tights. Low shoes. Cap to match the sleeves, trimmed with a feather. Lace ruffle and gold sword belt.—T 263 1/6.

PAGE, PERIOD ABOUT CHARLES I.—Loose jacket of amber satin, open in front to show the shirt. Full sleeves slashed with white. Deep lace collar and cuffs. Trunks of amber satin, trimmed with bows of mauve ribbon and gold tags. White silk tights, tied at the knee with a garter of ribbon and a bow. Low shoes with rosettes. Wide hat with a plume.—T 185 1/6.

PAGE, CHARLES V., 1380.—Loose tunic of green velvet, the sleeves of which are full to the elbow, and then fit tight to the arm, and made in a different colour. Silk tights, each leg being of a different colour. Sword belt. Close-fitting cap with a long feather.—CH 5 1/6.

PAGE, FRANCIS I.—Tunic of blue satin, cut square at the neck and trimmed with gold braid, the square at the neck being covered with a plaiting of white silk and a ruffle. The sleeves are very full, and arranged in plaits, tapering off towards the wrists. Trunks of white silk, puffed. White silk tights, and white velvet shoes. Short cape at the back, of blue satin edged with gold braid. Beefeater cap with white feathers. Gold belt round the waist, with a dagger.—N CH 12 1/6.

PAGE, HENRY III.—White silk doublet slashed with blue, and made with a plaited basque, trimmed down the front with a double band of gold braid and a band round the waist. White silk breeches, stockings, and shoes. Short cloak with a high collar made in blue satin edged with gold. Lace ruffle. Sugarloaf hat with a white plume.—N CH 29 1/6.

PAGE, HENRY IV.—Doublet of crimson velvet, open in front, and turned back with revers faced with mauve, and braided across with strips of gold braid. The opening on the chest is filled in with a fulling of white silk, and lace ruffle round the neck. The sleeves are formed with puffs at the shoulder, elbow and wrist of mauve silk, bound

with bands of crimson velvet, braided with gold. Black satin trunks. Silk tights of mauve and grey in stripes. Velvet boots. Short cloak of red velvet, lined mauve silk, and braided with gold. Crimson velvet cap braided with gold.—BM 64 1/6.

PAGE, HENRY IV.—See DROGAN.

PAGE, LOUIS XII., 1500.—Close-fitting jerkin of brocaded silk arranged in stripes of amber and grey, with a puffing of white round the waist. The sleeves are made of amber brocade, puffed with white at the shoulders and elbow. Silk tights of amber and grey stripes. Low velvet shoes. Close velvet cap.—CH 18 1/6.

PAGE, LOUIS XIII.—Short jacket of white satin braided with gold, below which the shirt is drawn out and arranged in a narrow puff, under which again is a trimming of loops of blue silk. Pink breeches cut off just below the knee, and edged with lace. Wide top boots of white leather. Short sugarloaf hat with red and white feather. Long hair in curls.—N CH 16 1/6.

PALIKARE.—Greek. White linen shirt with wide loose sleeves. Short jacket of scarlet cloth made with loose hanging sleeves, edged with black cloth braided with gold, and trimmed with buttons. Full skirt of white plaited linen, fastened round the waist with a coloured silk scarf, stuck full of daggers and pistols. Red cloth gaiters embroidered. Pointed sleeves. Red fez with a blue tassel. See also GREEK.—N 6 1/6.

PANGLOSS, DR.—Costume in black velvet, of George II. period.

PATIENCE.—See BUNTHORNE.

PAUL PRY.—Red and white striped nankeen tucked into half Wellingtons. Waistcoat to match. Long-tail coat of blue cloth with large gilt buttons. Beaver hat. Large umbrella under the arm.

PAUL AND VIRGINIA. PAUL.—Striped cotton trousers rolled up to the knee, and tied round the waist with a coloured silk scarf. Loose jacket open in front to show the shirt. VIRGINIA.—Plain princess dress in white fastened at the waist with a band. A small lace collar. Elbow sleeves with lace. The two enter carrying a large palm-leaf over their heads.—T 148 1/6.

PERSIAN OFFICER, 1816.—Under-dress or choga of amber silk, fastened round the waist with a silk scarf. Loose over-dress of green silk, made with full sleeves, and trimmed with gold braid. Kaftan made of Astracan fur.—CE 76 1/6.

PERSIAN PRINCE.—Tunic of scarlet silk, braided and embroidered with gold, made with short sleeves and long under-sleeve of amber. A V trimming

of black and gold ornaments the chest. Polished helmet with a chain mail curtain. Cloak suspended from the shoulders. Blue silk tights, and scarlet garters embroidered with gold. Pointed shoes. Gold belt.—T 235 1/6.

PETER THE GREAT.—Military coat of green cloth with deep cuffs of scarlet, trimmed with braid and buttons. Long vest of scarlet cloth. Breeches to match. High boots. Various orders on the breast.—C E 57 1/6 each.

PETIT DUC, LE.—Costume of the Duke of Marlborough period. Long military tunic with deep cuffs of another colour, and cuirasses. High boots, and wide three-cornered hat trimmed with gold braid.—T 203, 204, 206 1/6.

PHILIP II. OF SPAIN.—Doublet of black satin trimmed with broad bands of gold and embroidered with white crosses, fastened at the waist with a jewelled belt. Black satin trunks embroidered with gold bosses and violet stripes. Black silk tights. Low shoes. Short cloak at the back made in black velvet. Lace ruffle. Round velvet hat. Jewelled collar.—T 94 1/6.

PICADOR.—See SPANISH.

PICCOLINO.—An Italian image seller. Waistcoat of scarlet cloth, fastened round the waist with a sash of brown silk. Green plush knee-breeches. Drab cloth gaiters. Sugarloaf hat trimmed with wild flowers. Board of images on the shoulder, the jacket slung at the back.—T 139 1/6.

PICKWICK.—*Illustrated*. Drab cloth knee-breeches. Knitted stockings. Single-breasted waistcoat. Blue cloth swallow-tail coat, cut high in the neck, and turned back with a deep collar. Stand-up collar. Full cravat. Frilled shirt. Low broad-brimmed hat. Low shoes, with buckles. For John Bull, high boots with tops should be worn, the same shape as the present hunting boot.

PIERROT.—See also CLOWN.

PIERROT (JAPANESE).—Shirt of white satin made with very wide loose sleeves turned up with blue and trimmed on the shoulder with blue down balls. The shirt wraps double across the chest, and is trimmed with a deep collar and revers of blue, and fastened round the waist with a blue belt. Knickerbockers of white satin trimmed with blue down balls down the side seam. Blue stockings, shoes, and cap.—B M 146 1/6.

PIERROT.—*Illustrated*. Loose jacket and trousers of white, trimmed with bands and buttons of red. Ruffle round the neck. Sugarloaf hat trimmed red.—B M 91 1/6.

PIERROT, HENRY III.—Costume in style of the period, consisting of doublet, hose and cape slashed with pink. Pink garters and rosettes on the shoes. Lace ruffle.—B M 66 1/6.

PIERROT (LOUSTIC).—Tunic of amber satin, with wide hanging sleeves lined red, bound black, and trimmed with black rosettes. Amber satin knickerbockers, with black points at the knees. Deep Shakespeare collar and ruffle. High sugarloaf hat with a red feather. Black gloves with red cuffs. Striped under shirt and stockings.—B M 29 1/6.

PIERROT, LOUIS XV.—Costume of this period, consisting of a long coat, with full skirt and deep cuffs, trimmed with large blue rosettes or buttons. Knee-breeches, tied at the knee with blue buttons. Lace cravat. Low shoes and silk stockings. Three-cornered hat trimmed with blue rosettes.—B M 18 1/6.

PIFFARARE.—Similar costume to Lombardy, with bagpipes, or the piffero in addition.

PILOT.—Fancy costume. Jacket of crimson velvet or satin, open in the front displaying a frilled shirt; bound all round black velvet, edged with gold braid. Loose sleeve cut open, braided to match and showing the shirt sleeves. Knickerbockers of white satin trimmed down the sides with black velvet edged with gold. Striped stockings and low shoes. Felt hat trimmed with a feather.—B M 88 1/6.

PIONEER.—Short jacket of black velvet, embroidered with gold and edged round with a broad band of crimson. Sleeves trimmed to match. White waistcoat. Blue linen trousers with a stripe down the seam, of black velvet edged with gold. Felt cap with a plume. B M 80 1/6.

PIRATE.—See SMUGGLER.

PISTOL (MERRY WIVES OF WINDSOR).—Cloth jerkin with hanging sleeves. Tights of a drab colour. Conical felt hat with a feather. Broad leather waistbelt and long sword.

PLANTER, AMERICAN (SAINT CROIX, FROM PAUL AND VIRGINIA).—Frock coat of drab cloth, tied round the waist with a sash of crimson silk. Buckskin breeches. High boots. Large straw hat. White lace cravat with long ends covering the shirt front. Whip in the hand.—T 151 1/6.

PLUTON (FROM ORPHÉE AUX ENFERS).—Tunic of black satin, braided in diamond pattern with gold braid. Cuirass of polished brass. Black silk tights spotted with gold. Long satin cloak lined with violet, braided with gold and forming a train. Gold crown and trident.—T 47 1/6.

PODESTAT (FROM LA PETITE MARIÉE).—Doublet of white cloth fastened round the waist with a sash of crimson silk. Open jacket of white cloth with very full puffed sleeves of crimson satin. Crimson satin trunks. Drab silk stockings tied with pink ribbon. Low shoes with pink rosettes. Loose drab cloak. Wide felt hat trimmed with drab and crimson feathers.—T 118 1/6.



PICKWICK.

PROPERTY OF FRASER LIBRARY



POLE.



PRINCE.

PROPERTY OF FRASER LIBRARY

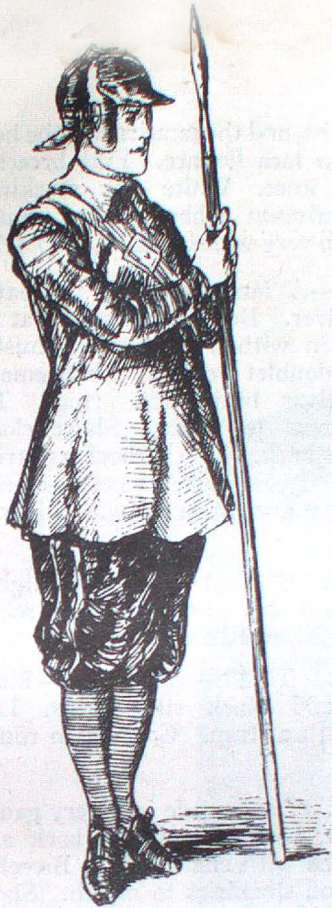


PIERROT.



PUNCH.

R. Böck



ROUNDHEAD.

PROPERTY OF FRASER LIBRARY



ROMAN.



RUBENS.



RALEIGH.

PROPERTY OF FRASER LIBRARY



ROBIN HOOD.

R. Birch

POLE.—*Illustrated.* Scarlet tunic trimmed with fur and embroidered with gold. Breeches of blue cloth, embroidered with gold down the front. Hessian boots, trimmed fur. Square-topped cap, trimmed fur. Sabre and sabretache. Similar to the costume worn in Falka.

POLICHINELLE.—The French Punch. Doublet made with square panelled basques, and formed with a large hump at front and back, trimmed with down rosettes of another colour. Knee-breeches edged with a frill. Gendarme hat with a pointed crown. Pointed sabots with rosettes. The costume is made in white satin, trimmed silver braid, and sometimes parti-colour red and blue, trimmed gold braid.—B M 13 or 21 1/6.

POLISH GENTLEMAN, 1633.—Long tunic of brocade made with long sleeves. Over-tunic with short sleeves made in crimson cloth, trimmed with gold lace brandebourgs. This over-tunic is lined with fur and turned over in wide revers in the front. Blue tights and high boots. Fur cap with a feather.—C E 47 1/6.

PORTUGUESE PEASANTS.—The female costume is a short skirt of crimson, edged with a broad band of black. Tunic of moire, bunched up close to the waist in front, and falling loose behind. In the front, the tunic is kept close up to the waist by two ribbons tied in bows. Corsage body of black, cut low at the neck, and edged round with gold braid, the braid forming shoulder straps. High muslin chemisette, with full sleeves, trimmed at the wrist with two deep cuffs. Silk handkerchief round the head. Ornaments: Gold coin necklace and earrings. The male costume is also very picturesque. Cloth jacket trimmed with coloured embroidery, placed round the edge and filling the corners. The sleeve is also trimmed with it. Black velvet vest, edged with gold braid, and fastened round the waist by a sash. The vest is open to show the frilled shirt. Brown cloth knee-breeches, trimmed with braid, and turned up at the knee with coloured silk cloth gaiters, embroidered with red. Sugarloaf hat.—O N 24 2/.

POSTILLION.—Short cut-away jacket of blue, with facings of white, trimmed with gold braid. Blue waistcoat, bound gold braid. Drab knee-breeches tied with rosettes. White stockings. Powdered hair. Low square top hat, turned up at the sides, and bound with gold braid.—B M 101 1/6.

PRIMROSE FAMILY.—See VICAR OF WAKEFIELD.

PRINCE, 1670.—Short jacket of amber satin, showing the shirt below it, which is made full and hangs loose. The jacket sleeves finish at the elbow, and are trimmed with lace, the full shirt sleeve covering the rest of the arm. Petticoat of amber brocade trimmed with loops of crimson

silk round the waist, and the same round the hem, above which is a lace flounce. Full breeches, fastened at the knee. White silk stockings, gartered with crimson ribbon. Low square-pointed shoes with very wide bows.—C H 47 1/6.

PRINCE CHARMANT.—A fancy costume in mauve satin, trimmed silver. Doublet cut square at the neck, and filled in with a plaiting of muslin. The basque of the doublet is cut out in battlements and bordered silver braid and fringe. The sleeves are trimmed to match. Short cloak, suspended at the back. Knickerbockers, trimmed with a silver stripe. Mauve striped stockings. Boots to match costume, trimmed with silver.—B M 32 1/6.

PRINCES IN THE FAIRY TALES.—Doublet tights, short cloak, pointed shoes, and flat cap; really a costume of the Elizabethan period.

PRINCES IN THE TOWER.—*Illustrated.*—Black velvet doublet and black silk tights. Low shoes, fastened with a strap. Gold chain round the neck.

PUNCH.—*Illustrated.* Tunic made in a very gaudy coloured cretonne, with a hump in back and front, and trimmed with small bells. Breeches in parti-colour, and stockings to match. Shoes turned up in points at the toes. Pointed cap, with a turned-up brim.

PYRENEAN.—Peasant of St. Sauveur. Short brown cloth jacket. Scarlet waistcoat. Brown cloth knee breeches. White stockings and laced boots. Conical hat.—N 72 1/6.

QUACK.—*Illustrated.* Single-breasted frock coat, covered with quack bills, pill-box labels, &c. Knee breeches, stockings, and low shoes. Broad-brimmed hat.

QUAKER.—*Illustrated on page 66.*

RAJAH.—Scindia, in the King of Lahore. Choga of amber silk, richly embroidered in squares, each square having a flounce embroidered in the centre. Round the waist is a sash of crimson and white, embroidered with gold. The breast is hung with three rows of pearls. Three bracelets on each arm, and an embroidered epaulet on each shoulder. The leggings are richly embroidered up the fronts, and finished off with deep anklets. Pointed shoes, turned up. Striped turban, ornamented with a gold circlet set with jewels and pearls, and an agrafe of jewels in the front.—T 192 1/6.

RALEIGH, SIR WALTER.—*Illustrated.* Velvet doublet and slashed trunks. Sleeves with a roll epaulet. Short cape, trimmed with gold braid. Ruff round the throat. Jewelled necklace and belt. Silk tights and low shoes.



PROPERTY OF
FRASER LIBRARY

RICHARD III.

GABARDINE of terra-cotta brocaded velvet, fastened round the waist by a jewelled belt supporting a purse and dagger. Court mantle of crimson velvet, lined with ermine. Ermine cape, over which is a jewelled collar chain. Crown.

RAOUL (FROM THE HUGUENOTS).—Costume of the time of Elizabeth. Doublet and trunks of violet silk, striped with a darker shade. Lavender silk tights, and low pointed shoes. Short c'oaik of violet velvet, trimmed with bands of a lighter shade. Gold chain round the neck. Sword belt, embroidered with gold.—T 23 1/6.

REITRE.—Doublet of brown velvet, slashed with a lighter shade, and trimmed with gold. Full sleeves, with puffs of the light shade. Crimson sash round the waist. Knickerbockers, with one leg made in light, and the other in dark brown. Long Cavalier cloak. Wide-brimmed hat. Striped stockings.—B M 87 1/6.

RENE.—A Mousquetaire dress from La Cröle. Tunic of crimson cloth, over which is worn a drab leather jerkin, embroidered on the breast with a go'd cross. The sleeves of the tunic are made with deep cuffs trimmed with gold braid, and muslin under-sleeves trimmed lace. Crimson trunks and tights. Cavalier cloak of drab cloth, lined with crimson. Low shoes, with high tongues and buckles.—T 108 1/6.

RICHARD III.—Same style of costume as Buckingham, with the addition of long loose gabardin trimmed fur and a deep fur collar.



RICHELIEU.

PROPERTY OF
FRASER LIBRARY

RICHELIEU.—Close-fitting robe of black. Purp'e baretta edged with deep lace. Scarlet cloak and train. Scarlet wide-brimmed hat, hanging down the back.

RIGOLETTO.—See JESTER.

RIP VAN WINKLE (YOUNG RIP).—Illustrated on opposite page.



QUAKER.

PROPERTY OF
FRASER LIBRARY

RIP VAN WINKLE.—Illustrated on opposite page.

ROBESPIERRE.—Costume of the Directoire period, with a tricolour sash round the waist, and long sword.

ROBINSON CRUSOE.—Tunic and trousers of goat-skin. Belt round the waist, with a hatchet. Parrot on the shoulders. High fur cap. Gun and umbrella.

ROBIN HOOD.—For the style of costume see LEOPOLD. Bow and arrow can be substituted.



PROPERTY OF
FRASER LIBRARY

RIP VAN WINKLE.

ROBIN HOOD.—*Illustrated.* Tunic of green cloth, fastened round the waist by a belt. Shoulder cape, with hood. Tights and high boots. Bow and quiver of arrows.

ROCHESTER (CHARLES II.).—A Cavalier costume, trimmed with very deep lace.

ROMAN.—*Illustrated.* (Mr. Wilson Barrett's costume in "Claudian.") Tunic of white silk or satin, shaped in the body, and full in the skirt, edged with a broad band of braid. Girdle to match. Short cloak, fastened on the right shoulder. Flesh tights. Boots to represent sandals, strapped round the leg.

ROMAN, ANCIENT.—Pollione, in *Norma*. Linen tunic, bound and trimmed with red, and tied round the waist. Cloak of white linen, lined red and trimmed red. T 37 1/6.


ROMAN, ANCIENT.—Sévere, from *Polyeucte*. Tunic of purple, reaching to the knees, over which is worn a close-fitting vest of white embroidered with gold; a band is tied round the waist, below which the vest extends trimmed in narrow panels. Wide shoulder-straps and short sleeves. Cloak of purple, embroidered with gold. An addition can be made to this costume of a brass cuirass. T 221 1/6.

ROMAN, MODERN.—*See ITALIAN.*




PROPERTY OF
FRASER LIBRARY

YOUNG RIP VAN WINKLE.




A ROMAN
CAPTAIN.

FULL tunic of crimson,
made with full sleeves.
Over this is worn a kilt
composed of steel plates
arranged in a double row,
fastened on to a cloak
foundation. Corslet of



brass, made with shoulder
guards, with over-sleeves
of blue cloth. The sword
is suspended by a leathern
thong at the left side. Brass
helmet, ornamented by a
plume. Sagum or short
full mantle suspended at
the back, and fastened at
each shoulder.



PROPERTY OF
FRASER LIBRARY

A ROMAN CAPTAIN.

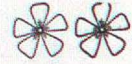
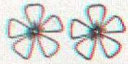




PROPERTY OF
FRASER LIBRARY

A ROMAN SENATOR.

TUNIC of white linen made very full, pleated at the neck, and fastened round the waist by a belt, and ornamented by a band of crimson cloth. Toga of crimson cloth. Sandals of crimson leather. Wreath of green bay leaves round the head.



ROMEO.

VENETIAN COSTUME.
Tunic of brocaded silk worked in colour, the sleeves being puffed at the shoulder



and elbow. Silk tights, and both legs striped. Gold sword-belt, and velvet bag pocket. Long scarlet cloak lined drab. Pointed shoes.



PROPERTY OF
FRASER LIBRARY

ROMEO.

ROMEO.—Venetian costume. Tunic of brocaded silk worked in colour, the sleeves being puffed at the shoulder and elbow. Silk tights, one leg striped and the other plain, embroidered with a crest. Gold sword-belt and velvet bag pocket. Long scarlet cloak lined drab. Pointed shoes.—T 214 1/6. See *Illustration*, page 70.

ROSALIND, in "As You Like It."—The disguise costume. See JEAN DE NIVELLE, also LEOPOLD.

ROUNDHEAD.—*Illustrated*. Steel cap. Buff leather jerkin, with a belt across. Knickerbockers. Stockings and shoes.

RUBENS.—*Illustrated*. Velvet doublet and knickerbockers. Stockings and shoes. Short cape and broad-brimmed hat, with a plume.

RUPERT, PRINCE.—See CAVALIER.

RUSSIAN.—See OSIP. DANICHEFF.

RUSSIAN.—Moujick. Long coat of scarlet cloth, open at the neck, and edged. Full trousers and high boots. Fur cap.—N 35 1/6.

SACCONI, OR ITALIAN MUTE.—Long loose robe of white calico, tied round the waist with a cord. Jelly-bag hood covering the face, holes being cut for the eyes and mouth.

SAINT BRIS.—See HUGUENOT.

SARDANAPALUS.—*Illustrated*. An Assyrian costume. Tunic of white silk, embroidered with gold round the hem, fastened at the waist with a girdle of gold. Mantle of purple velvet, edged round with gold braid, and fastened with a large gold brooch. Gold circlet round the head. Embroidered boots.

SARDINIAN PEASANT.—Jacket of blue cloth, trimmed silver braid. Scarlet waistcoat. Short trousers. Skirt like a Highlander's kilt. Gaiters of black cloth. Scarlet cap.

SANDFORD AND MERTON.—Cloth jacket, trimmed down the front with three rows of brass buttons. Large frilled trousers buttoned outside, and on to the jacket. Flat cap with a wide top. Low shoes with straps. Satchel and books slung over the shoulder.

SAXON WARRIOR.—See GERALD and KING ARTHUR, also HAROLD.

SCOTCHMAN.—Jacket of scarlet cloth, trimmed with facings of gold braid edged round with gold braid. Tartan kilt. Scarf to match, fastened on the shoulder. Sporrans of goatskin. Glengarry cap, plaid socks. Low buckle shoes.—BM III 1/6.

SELIM II., 1573.—Robe of gold brocade, ornamented with jewels and other precious stones, and tied round the waist with a sash of white silk embroidered with gold. The sleeves are of green silk, embroidered with gold. Loose over-dress of purple, forming a train, faced with ermine, and made with full short sleeves of gold brocade. Turban set with jewels.—CE 23 1/6.

SHAKESPEARE.—An Elizabethan costume in black satin or velvet, with a loose overdress like that of Leonardo da Vinci.

SHEIK.—See ARAB.

SHEPHERD.—See BERGER.

SHYLOCK.—Tight-fitting overdress of black, tied round the waist by a girdle. Gabardin, trimmed with fur. Skull cap. A pair of scales and a knife.

SINNATUS.—A Galatian costume worn by Mr.

Terriss in the "Cup." Tunic of armour cloth, made with short sleeves, worn over a flesh-colour jersey round the body, and thrown over the shoulder as a long Oriental scarf. Tights. Sandals. Phrygian cap, with ear flaps.

SIoux INDIAN CHIEF.—See INDIAN. *Illustrated*.

1610 COSTUME.—See DUC D'ALBE.

SKELETON.—*Illustrated*. Close-fitting tunic and trousers of black velvet, painted down the front to represent a skeleton. This can be done with luminous paint, or with Judson's glitterine paint. Another way is to cut the shapes in white satin, and shade them up with crayons. High boots. Large cavalier cloak and hat.



TOUCHSTONE.

ROSALIND.



SWISS GUARD.

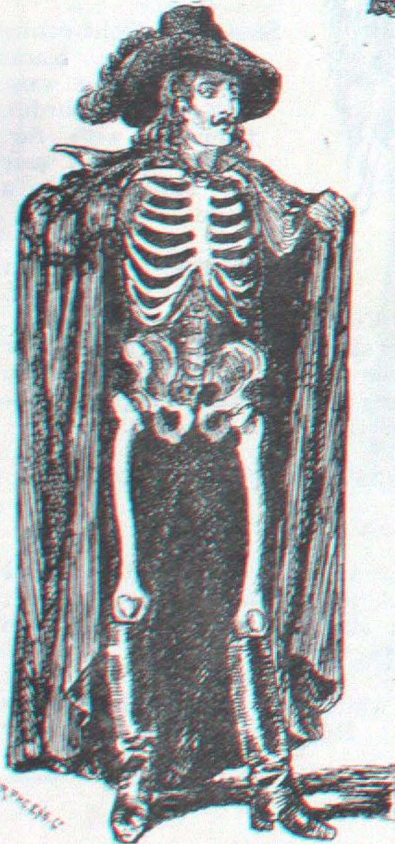
PROPERTY OF FRASER LIBRARY



SPANISH MULETEER.



SARDANAPALLUS.



SKELETON.

PROPERTY OF FRASER LIBRARY



SMUGGLER.

PROPERTY OF
FRASER LIBRARY



TELL, WILLIAM.



TYROLEAN.



TEAZLE, SIR PETER.

PROPERTY OF
FRASER LIBRARY



TURKISH SLAVE BOY.



TROVATORE.

- SKATERS.**—Fancy Polish costumes. Female.—Double-breasted jacket body of blue satin, edged round with fur, and trimmed with a row of wide gold braid, and arranged to form a V opening at the neck. Round skirt of white satin, edged with fur and gold braid. Polish cap edged with fur. High blue satin boots edged with fur. Male.—Double-breasted jacket of blue satin, fastening cross-ways, edged round with gold braid and fur, and fastened round the waist with a white silk scarf. Drab buckskin breeches fitting very tight, and braided with gold on the pockets. High laced boots edged with fur. Polish cap edged with fur.—D 23 2/.
- SMUGGLER.**—*Illustrated.* Costume worn in the "Pirates of Penzance." Loose coat of blue cloth, made with wide lapels. Braided gold waistcoat to match, open at the throat to allow of a broad tie, fastened in a slip-knot. Loose skirt, like a Highlander's kilt, fastened round the waist with a broad belt and buckle. Tights. Low shoes, with buckles. Pistols and cutlass.
- SOBIESKI.**—King of Poland, 1629 to 1696. Green cloth tunic reaching to the feet, made rather full in the skirt, fastened round the waist with a gold embroidered sash, and braided on the chest with gold brandebourgs. Gold chain round the neck. Long fur cloak, fastened with a gold clasp. Red velvet cap edged with fur.—CE 44 1/6.
- SOLIMAN III., 1688.**—Long close-fitting robe of green silk. Loose over-robe of white silk, brocaded with gold and trimmed with fur. White muslin turban.—CE 56 1/6.
- SPANISH.**—Marasquin, in "Girofle-Girofla." Close-fitting jacket of mauve silk trimmed with epaulets and on the arms with gold braid. Short breeches to match, tied round the waist with a silk sash. Burnouse cloak of Algerian striped material. Lace ruffle round the throat and wrists. Silk cap on the head. Mauve silk tights. Low shoes.—T 63 1/6.
- SPANISH BRIGAND.**—Don José, in "Carmen." Vest of scarlet cloth. Knee breeches of brown velveteen, fastened round the waist by a blue sash. Jacket of brown cloth trimmed with black braid. Striped wrap thrown over the shoulder. Coloured silk handkerchief round the head. Felt turban hat. Low shoes striped in lattice-work round the leg to the knee. Blunderbuss.—T 87 1/6.
- SPANISH BULL FIGHTER.**—*See also ESCAMILLO.* The same description of costume as Toreador, but made in red, with a large cloak.
- SPANISH BULL FIGHTER.**—Toreador. Waistcoat of white silk, richly braided with gold, and open at the neck to show the shirt-front. Short Spanish

jacket of green satin, with rounded fronts trimmed with gold braid and epaulets. Crimson sash round the waist. Knee breeches of green satin. Silk stockings. Low shoes.—CE 67 1/6.

SPANISH BULL FIGHTER.—Toreador. Jacket of blue satin, open in a V at the throat to show the shirt front, and trimmed on each breast elaborately with gold fringe, and fastened at the waist with a red silk sash. Long sleeves, trimmed with gold braid and epaulets. Knee breeches trimmed with gold braid. Pink silk stockings. Large cloak with a braided cape. Turban hat. Low shoes.—N 71 1/6.

SPANISH MULETEER.—Cloth vest tied round the waist with a sash of blue silk. Loose jacket of brown cloth, richly embroidered in various colours. Sleeves to match. Black velveteen breeches. Cloth gaiters. Coloured handkerchief round the head. Felt turban.—N 33 1/6. *See also MULETEER illustration.*

SPANISH PEASANT.—Tarragona. Double-breasted waistcoat of red and white striped cloth, trimmed with buttons. Short jacket with a high collar. Deep sash round the waist of red and white stripes. Black velveteen knee-breeches buttoned at the knee. Brown cloth gaiters. Shoes tied round the ankle. Red cap, jelly-bag shape.—N 53 1/6.

SPANISH PEASANT.—Valencia. Double-breasted waistcoat of blue cloth, trimmed with metal buttons. White linen shirt, and loose breeches cut off at the knee, and fastened round the waist with a red sash. Loose jacket thrown over one shoulder. Red silk handkerchief round the head. Sugarloaf hat. Low shoes strapped round the leg.—CE 90 1/6.

SPANISH PEASANT.—*See also ARRAGON.*

SPANISH PEASANTS.—Gala dress. Male costume.—Spanish jacket of green satin, trimmed with epaulets and embroideries of pink silk. White satin vest embroidered with gold. White satin knee-breeches, with a pink stripe down the side. White silk stockings and low shoes. Felt turban. Cloak carried on the arm. Female.—Short skirt of red silk trimmed with flounces of black lace. Pointed body, with a white silk plastron edged on each side with black lace, and black lace basque. Long sleeves puffed at the shoulder. High comb, and black lace mantilla.—O N 5 2/.

SPANISH STUDENT.—Black velvet tunic and knee breeches, the tunic fastened round the waist by a belt. Black silk stockings, and low buckle shoes. Lace frill round the neck and wrists. Gendarme hat, to which a wooden spoon is fastened by a coloured rosette.—N 63 1/6.

SPANISH TROUBADOUR.—Figaro. Waistcoat of white silk, open to show the shirt frill. Spanish jacket of green velvet, with rounded fronts richly trimmed with silver braid and embroidery. The sleeves are trimmed to match. Silver fringe epaulets. Knee breeches of green velvet, trimmed with silver braid. White silk stockings. Low shoes with pink rosettes.—T 38 1/6.

SPANISH TROUBADOUR.—See FIGARO.

SULTAN.—Abdul Medjid Khan. Military tunic of blue cloth, trimmed down the front and round the skirt with deep gold lace. White drill trousers. Military cloak. Scarlet fez, with a diamond agrafe.—C E 88 1/6.

SULTAN.—Selim III., 1807. Loose robe of green silk, trimmed with a deep collar of white plush or fur. Wide stripes of the same down each front. Loose sleeves, edged with the same. Jewelled turban.—C E 76 1/6.

SURFACE.—See GENTLEMAN, GEORGE III. and CHARLES SURFACE.

SURREY (EARL OF).—See costumes, ELIZABETH.

SWISS.—Chamois Hunter. Scarlet waistcoat fastened round the waist with a leather belt. Loose coat of light cloth. Brown velveteen knee-breeches. Leather gaiters. Laced boots. Sugarloaf hat. A horn hanging at the side. Rifle.—N 10 1/6.

SWISS NOBLEMAN, 1581.—Doublet in black silk, made with a yoke and the body plaited into it, fastened round the waist with a belt. Short cloak of scarlet satin, trimmed with broad black ribbon velvet. Ruffle at the neck. Silk tights. Low shoes.—C E 32 1/6.

SWISS PAPAL GUARD.—*Illustrated*. Scarlet tunic. Knickerbockers and stockings in parti-colour. Steel cuirass and helmet. Low shoes. Sword.

SWISS PEASANTS.—Female.—Round skirt of blue satin, bound with scarlet. Chintz apron, pointed body of black velvet, with shoulder straps, cut square at the neck. High chemisette, with full sleeves. Black velvet collarette. Large straw hat, trimmed with flowers. The hair is worn in long plaits. Low shoes. Male costume.—High vest of red cloth. Brown velveteen knee breeches. Black embroidered braces worn outside the vest. Loose coat of drab cloth. Broad felt hat. White stockings and buckle shoes.—O N 2 2/.

TABARIN.—Red and yellow striped breeches fastened at the knee with a ribbon and rosette. Blue satin tunic, open at the throat, trimmed with braid across the front. Puffed epaulets. Sleeves of yellow and red stripe. Leather belt. Blue stockings. Low shoes with rosettes. Felt hat.—B M 53 1/6.

TARTAR COSTUME.—Female.—Bag trousers of blue. Skirt of fancy brocaded material. Over-dress of blue silk made in wide plaits. It has a V opening at the neck, edged round with gold braid and fastened with a belt and large clasp. Short sleeves. High linen chemisette, with long loose sleeves. Embroidered red fez. The hair is in long plaits. Male costume.—Bag trousers. Vest of striped material, edged with an embroidered band. Striped silk scarf round the waist. Short jacket of blue cloth, embroidered and braided with gold. Long overcoat reaching almost to the ground. Round fur cap.—O N 20 1/6.

TEAZLE, SIR PETER.—*Illustrated*. Costume of early George III. Single-breasted coat with full skirts, cuffs, and pocket flaps. Waistcoat with deep lapels and pocket flaps. Velvet breeches. Silk stockings. Low shoes. Low-crowned hat, three-cornered. Lace cravat and ruffles.

TEMPLAR.—See KNIGHT.

TOREADOR.—Knee breeches and silk stockings. Short jacket, trimmed with silver braid. Vest to match. Silk scarf round the waist, one end hanging at the side. See also SPANISH.

TOUCHSTONE.—See CLOWN and JESTER.

TOURIST.—Green velveteen knickerbockers, tied round the waist with a red silk sash, tied in a bow, with ends at the sides. Open vest, showing the shirt. The jacket is worn slung at the back, and tied across the chest with a gold cord and tassels. Straw hat. Alpine staff. High-laced boots.—B M 104 1/6.

TRENITZ (FILLE DU MDME. ANGOT).—Incroyable costume. High-waisted pants, fastened above the ankle. Short-waisted vest, and coat of striped silk. The coat is made with very long tails, lined red silk, and revers faced to match. Belt, suspending watch and eyeglass. Large muslin cravat, fastened by a gold brooch. Directoire hat, trimmed with a bow. Steel cut buttons are worn on the cuffs and coat facings. Low buckle shoes.—T 31 1/6.

TROMPETTE DES CHICARD.—Black velveteen knickerbockers, trimmed with a gold band down the sides, and slashed at the bottom with red, tied round the waist with a red sash, fastened in a bow, with long ends hanging at the back. Blue flannel shirt, trimmed with military facings of gold braid. The sleeves are lined with red, and rolled up to the shoulder, showing an under sleeve. Gendarme hat trimmed with a red plume. Trumpet, slung by a scarlet cord over the shoulder. Gauntlet gloves. Red gaiters.—

TROVATORE.—See MANRICO.



PROPERTY OF
FRASER LIBRARY

A SATYR.

THIS is a property costume, made in goat skins. The legs in imitation of a goat; the upper part of the body being covered with goat skin, leaving the right arm and shoulder bare. The head is crowned with vine leaves. Large ears, pan pipe, and water gourd.



PROPERTY OF
FRASER LIBRARY

SHYLOCK.

FULL gabardine of cloth, fastened round the waist by a leathern girdle, supporting a bag purse and sheath knife. Round the shoulders is a cape of the same material, with a hood. Long full sleeves. Skull cap of velvet.



PROPERTY OF
FRASER LIBRARY

TRUMPETER.

Tunic of broché cloth, over which is worn a sleeveless tunic of chain mail. Over which again is a tabard of cloth embroidered with the Royal Quarterings in front and back. Round the waist is a leather belt and sword-belt. Worsted hose, striped on the left leg and plain on the right. Velvet cap with a plume.

This same costume answers for the Pursuivant.

- TURK (CHAMELIER, CONSTANTINOPLE).**—Bag trousers of green cloth, forming also gaiters, embroidered with scarlet ribbon. Vest of pink silk with wide hanging sleeves, and fastened round the waist with a striped scarf. Blue turban.—N 31 1/6.
- TURKISH SLAVE BOY.**—*Illustrated.* Loose white tunic, with an over tunic of blue made a little shorter and tied round the waist. Loose jacket of crimson satin with wide open sleeves bound with scarlet. Scarlet fez wound round with white muslin. Striped leggings.—N 51 1/6.
- TURLUPIN.**—Tunic and trousers made of yellow and pink striped sateen. The tunic is fastened round the waist with a sash of blue silk, and the coat collar, revers, and cuffs are trimmed to match. White lace frill at the neck and wrists. Soft cap of blue silk. Bow of the same at the end of the trousers, covering the instep. Low shoes.—B M 89 1/6.
- TYROLESE HUNTER.**—White linen skirt. Black velvet breeches, fastened with embroidered braces. Loose white skin coat thrown over the shoulders. Green thick-ribbed stockings and high boots. Tyrolese hat.—N 45 1/6.
- TYROLESE PEASANTS.**—Male costume.—Loose coat of white soft leather, trimmed with facings of green. Blue jersey. Green velvet knee-breeches, fastened by a belt at the waist. Embroidered braces joined across the front and back with a cross strap. Embroidered gaiters. High-laced boots. Sugarloaf hat. Female costume.—Full round skirt of brown striped silk, with an apron of shot silk. Corsage body of brown silk, laced across the front. Over body of black satin, trimmed with gold braid. High muslin chemisette. Gaiters of black, striped pink. Low shoes. Silk cap trimmed gold braid and lace.—O N 18 2/.
- TYROLESE CLOCK SELLER.**—*See* FRICKETT.
- TZIGANE.**—Tunic and knickerbockers of violet velvet, the tunic fastening across the chest from right to left, and trimmed with a number of gilt buckles, and secured round the waist by a belt. The sleeves are made in lavender silk, and trimmed with a frill at the neck and wrist. High boots. Pointed velvet cap.—B M 143 1/6.
- VAN DYCK.**—*Illustrated.* Cavalier jacket, open in front to show the shirt. Full breeches. Short cloak. Deep collar, trimmed lace. Conical hat with a feather. Stockings, and low shoes with rosettes.
- VALENTINE (FROM "FAUST.")**—*Illustrated.* Doublet and knee-breeches slashed. Very full sleeves, slashed. Large hat cut in turrets all round, and trimmed with feathers. Silk stockings. Slashed shoes.
- VALENTINE (FROM THE HUGUENOTS).**—A riding costume of the time of Elizabeth. Princess robe of ruby velvet, made full at the back and forming a train; trimmed round the front and round the train with several rows of gold braid. Gold cord girdle round the waist. Epaulets to the long sleeves. Lace frill round the throat and sleeves. Small velvet hat trimmed with a feather. Ornaments: pearl earrings.—T 73 1/6.
- VAL-JOLY.**—*Illustrated.* A Louis XV. costume from La Camargo. Long vest of brocaded silk with large pocket flaps. Coat with full skirts made in cream silk shot blue, the sleeves being trimmed with deep cuffs of brocade. White silk knee-breeches, white silk stockings gartered with blue ribbon. Lace cravat.—T 218 1/6.
- VENETIAN.**—*Illustrated.* Short velvet tunic, lined in front, and made with puffs at the shoulders and elbows. Parti-colour tights. Small cap and feathers.
- VENETIAN.**—Gentleman 17th century. Tunic of black brocaded silk, trimmed with a pink stripe panelling, the tunic cut square at the neck, and filled in with a plaiting of muslin. The sleeves form a very large puff from the shoulder to the elbow; from thence to the wrist it is close-fitting, and made in pink silk. Pink silk tights. Low shoes slashed at the toes. Belt with a dagger. Gold chain round the neck.—L C 16 1/6.
- VENETIAN GONDOLIER, 1506.**—Crimson tights. Jacket of blue satin tied down the front. Sleeves made, the top part of blue, and the lower half of amber satin, with puffs at the shoulder, elbow, and wrist. Small crimson cap.—C E 8 1/6.
- VENETIAN NOBLE, 1496.**—Close-fitting jacket of black silk, trimmed in front with a V plastron of gold brocaded silk, ornamented on each with revers of white silk, edged with black between the white and gold. To this jacket is attached a loose basque of crimson satin. The sleeves are of black silk trimmed with gold braid, and slashed with white at the shoulder and elbow. Silk tights, each being in a different colour or pattern. Crimson satin cloak, trimmed with gold braid. Gold fillet round the head, ornamented with an eagle's feather.—C E 2 1/6.
- WAKEFIELD, VICAR OF.**—*Illustrated.* Long cloth coat, with full skirts, flaps and sleeves, with deep cuffs. Long dark silk waistcoat. Knee breeches. Silk stockings, and low shoes with buckles. White wig. Three-cornered hat.
- WALLACHIAN.**—Long blouse of white linen, embroidered round the collar and down the fronts. Full sleeves, turned up and embroidered. Round the waist is a sash of brown, and an embroidered belt. Bag trousers of white linen. High-laced boots. Fur cap.—N 15 1/6.

PROPERTY OF
FRASER LIBRARY



VAL-JOLY.



VALENTINE, FAUST.



VICAR OF WAKEFIELD.

PROPERTY OF
FRASER LIBRARY



VENETIAN.



VANDYCK.

PROPERTY OF FRASER LIBRARY



WELLER, SAM.



WATTEAU.



WILLIAM III.



WATERMAN, QUEEN'S.

PROPERTY OF FRASER LIBRARY



WHITTINGTON.

RL 27610

WATERMAN, KING'S.—Scarlet coat, made double-breasted, buttons down each side, and embroidered on the chest with K.R., &c. The coat has a full skirt and roll epaulets. Scarlet plush knee - breeches. Silk stockings. Low shoes with buckles. Jockey cap.

WATTEAU SHEPHERD.—*Illustrated.* Long vest with flaps, embroidered. Coat of the same length, knee-breeches, stockings, and dancing pumps. Three - cornered hat. Crook trimmed with flowers.

WATTEAU.—*See costumes LOUIS XVI.*

WELLER, SAM.—*Illustrated.* Open jacket, and knee - breeches. Worsted stockings, and low shoes with buckles. Handkerchief tied round the neck.

WHITTINGTON.—*Illustrated.* Tights. Pointed shoes. Close - fitting tunic, fastened at the waist with a strap. Flat cap. Wallet carried over the shoulder.

WILD, JONATHAN.—*See DELICAT.*

WILLIAM AND MARY.—*See costumes LOUIS XIV.*

WILLIAM III.—*Illustrated.* Long embroidered vest. Coat with full skirts and deep cuffs. Knee-breeches. Silk stockings. Low shoes with high tongues. Lace cravat. Long curled wig.

WILLIAM IV., or LOUIS PHILIPPE.—Swallow-tail coat of blue cloth, trimmed with brass buttons, the collar being cut very deep, and made of velvet; wide revers. White drill double-breasted waistcoat, with wide revers. Brown doeskin breeches, fitting very tight to the leg. Boots reaching half-way to the knee. Shirt with a frill. Large cravat. Sugar-loaf hat.—O T 937 1/6.

WILLIAM IV., or LOUIS PHILIPPE.—A Dandy. Cutaway coat, with long tails, made in drab cloth, having a very deep collar and wide revers. The coat is worn buttoned, fastening only with two buttons. Double-breasted white drill waistcoat. Tight-fitting doeskin breeches. High boots with amber top. Stiff stand-up collar with white handkerchief cravat. The opening of the coat at the chest is sufficiently large to display the shirt front, and a black and red striped handkerchief is folded inside, forming a narrow rim between the shirt front and coat. Sugar-loaf hat. Stick and glasses.—O T 938 1/6.

WILLIAM TELL.—*Illustrated.* Jacket of slate-coloured satin fastened round the waist by a brown leather belt, fastened down the front with ribbons, with a small puffing of white between each tie. The sleeves are slashed and puffed at the shoulder and elbow. Scarlet satin trunks,



YEOMAN OF THE GUARD.

PROPERTY OF
FRASER LIBRARY



ZOUAVE.



ZEALANDER.



ROI D'YVETOT.



YANKEE.

PROPERTY OF
FRASER LIBRARY



ZULU.



Alzovic & Co.

PROPERTY OF
FRASER LIBRARY



A Stepping Stone to happiness.

Ladies' and . . .
Gentlemen's . . .
Fancy Dresses


ON
SALE OR HIRE.
— AND —
MADE TO ORDER.


J. A. HARRISON COY., LTD.
THEATRICAL, FANCY &
HISTORICAL COSTUMIERS.

29, LEICESTER SQUARE, LONDON, w.e.

Costumes, Scenery, Wigs, &c., for Theatrical
Performances, supplied in Town or Country.

AMATEURS SPECIALLY CATERED FOR.

Telegraphic Address: "ERECTNESS, LONDON."

Telephone No.: 2941 Gerrard.

(Late of 31, Bow Street, Covent Garden.)

For Reference

Not to be taken from this room



FRASER HICKSON INSTITUTE



FH78227