

3 1761 04009 5655





Digitized by the Internet Archive
in 2007 with funding from
Microsoft Corporation

THE COSTUME
OF
THE ANCIENTS.





*Grecian female.
from a fictile vase.*

THE COSTUME
OF
THE ANCIENTS.

By THOMAS HOPE.



IN TWO VOLUMES.—VOL. II.

A NEW EDITION, WITH THREE HUNDRED AND TWENTY-ONE PLATES.

London:
CHATTO AND WINDUS, PICCADILLY.
1875.

18482
4/12/91
6

LIST OF PLATES IN THE SECOND VOLUME.

No.	No.
156. Grecian Trumpeter.	181. Juno wearing the diplax.
157. Æsculapius.	182. Greek poet.
158. Minerva.	183. Diana.
159. Helmets of Minerva, of Roma, and of Grecian hero.	184. Grecian female.
160. Telesphorus.—Hygeia.	185. Grecian female.
161. Grecian female.	186. Grecian female.
162. Grecian head-dresses.	187. Jupiter Ammon.— Neptune. — Cybele. — Minerva. — Apollo, and Mercury.
163. From a painting at Herculaneum.	188. Grecian female.
164. Juno Lanuvina.	189. Grecian female.
165. Different Ptolemies, and their Queens.	190. Grecian female.
166. Grecian head-dresses.	191. Jupiter. —Juno. —Apollo. — Mi- nerva.—Hercules, and Bacchus.
167. Bacchus.	192. Musical instruments.
168. Grecian scrolls.	193. Grecian female.
169. Greek fictile vase.	194. Grecian female.
170. Greek females.	195. Females dancing and playing on the lyre.
171. Bacchanalian personages.	196. Jupiter.
172. Muse.—Greek terra cotta jug.— Ceres.	197. Juno.
173. Bacchanalian personages.	198. Diana.—Ceres.—Venus.
174. Grecian head-dresses.	199. Scenic masks.
175. Bacchanalian. —Mercury.— Bac- chante.	200. Musical instruments.
176. Greek shields, and other armour.	201. Grecian females.
177. Grecian helmets.	202. Grecian lamps, candelabra, and other utensils.
178. Grecian female.	203. Torches, tripods, cista, pyxis, &c.
179. Grecian female.	204. Grecian peasants.
180. Bacchante dancing.	

LIST OF PLATES.

- | | |
|---|--|
| <p>No.
205. Grecian biga and candelabra.
206. Grecian females.
207. Muses.—Diana.
208. Marble chair of Potamos.
209. Dancing girls.
210. Venus.—Muse.—Diana.
211. Apollo, Musagetes.—Diana succincta.—Ceres.
212. Minerva.
213. Comedian.
214. Grecian female.
215. Canephora.
216. Grecian female.
217. Grecian lady.
218. Tripod, candelabrum, chair, &c.
219. Grecian female.
220. Diana succincta.
221. Greek vases.
222. Itinerant sanctuary.
223. Grecian heads.
224. Reception of Bacchus.
225. Gorgons.
226. Vases, pateras, lamp, &c.
227. Chair of state, &c.
228. Greek lady.
229. Apollo Musagetes.
230. Vase with Bacchanalian.
231. Architectural orders.
232. Faustina.
233. Roman cisterns.
234. Flora.
235. Fortune.
236. Car of bronze.
237. Roman, in his toga.
238. Roman youth with the bulla.
239. Roman orator.
240. Roman matron.
241. Roman ladies.
242. Marcus Aurelius.
243. Roman empress.
244. Faustina.</p> | <p>No.
245. Roman empress in the character of Ceres.
246. Roman head-dresses.
247. Roman emperor, assisting at a sacrifice.
248. Camillus.
249. Roman emperor, in his military tunic.
250. Roman standard-bearer.
251. Roman general.
252. Roman cuirass.
253. Roman soldier.
254. Roman emperor.
255. Roman general.
256. Roman general.
257. The goddess Roma.
258. Nemesis.
259. Roman empress, with the attributes of plenty.
260. Roman empress.
261. Roman empress.
262. Victorious auriga.
263. Biga.
264. Roman charioteer, driving in the circus.
265. Bull adorned for sacrifice.
266. Pontifical insignia, and instruments of sacrifice.
267. Sacrificial instruments.
268. Candelabrum, altar, and tripod.
269. Lectisternium.
270. Fasces and curule chair.
271. Triumphal car.
272. Mile-stone.—Cage of sacred pullets.—Naval column.
273. Altar and sarcophagi.
274. Altars and sarcophagus.
275. Chair and tripod.
276. Roman study.
277. Lavacrum or bath.
278. Roman sarcophagus and altars.</p> |
|---|--|

LIST OF PLATES.

- | No. | No. |
|---|---|
| 279. Inferia and Etruscan altars. | 289. Different buskins and sandals. |
| 280. Poops and prows of Roman galleys. | 290. Roman buskins and sandals. |
| 281. Poop, prow, anchor, and rudder of Roman galley. | 291. Roman cuirasses and jacket worn by the night watches of the capitol. |
| 282. Sacrificator.—Priest.—Camillus. | 292. Dacian, Imperial, and Roman cuirasses. |
| 283. Tribunes. | 293. Roman soldiers. |
| 284. Senators and knight. | 294. Roman soldiers. |
| 285. Roman dresses. | 295. Roman officer. |
| 286. Roman empresses. | 296. Roman armour and standards. |
| 287. Flamen.—Emperor crowned with laurel.—Emperor in the character of Frater arvalis. — Empress Helena. — Emperor Constans. | 297. Roman standards, shields, and battering-ram. |
| 288. Gloves worn by Pancratiasti, and military buskins. | 298. Sarcophagi. |
| | 299. Roman columbaria. |
| | 300. Roman columbaria. |

SUPPLEMENT:

COMPRISING TWENTY-ONE ENGRAVINGS OF MARBLES AND ANTIQUES,
COLLECTED BY THE LATE THOS. HOPE, ESQ., AND NOW PRESERVED EITHER
IN THE GALLERY AT DEEPDENE, OR IN LONDON.

Plate

- 301. Isis, with the Sistrum; ancient Greek.
- 302. Grecian Priestess.
- 303. The same, right side.
- 304. The same, left side.
- 305. Grecian Priestess.
- 306. Grecian Nymph, with a flower, probably Venus.
- 307. The same, right side.
- 308. Hygeia.
- 309. Silenus, seated.
- 310. Silenus, in the attitude of the Farnese Hercules.
- 311. Indian Bacchus.

Plate

- 312. Tripod, with bust of the Emperor Caracalla in the character of Hercules.
- 313. Antique Sarcophagus.
- 314. Another.
- 315. Another. (See Piranesi, Vasi, plate 5.)
- 316. Cinerary Urn.
- 317. Antique Sarcophagus.
- 318. Cinerary Urn.
- 319. } Antique Columns and Vase, sup-
- 320. } posed to have been dedicated
- 321. } to Ceres.



*Grecian Trumpeter
from a fibula vase*





Asculapius .
from a statue in the gallery at Florence



Minerva
from a fictile vase





1, 2 & 3 Different helmets of Minerva
4, of Roma. 5, of Grecian hero





Telesphorus

Hygieia



*Grecian female
from a bas. relief in the Capitol*



Grecian head dresses.



From a painting at Herculaneum



Juno Lavinia
from a statue in the Vatican



Different Ptolemies & their Queens



Grecian head dresses

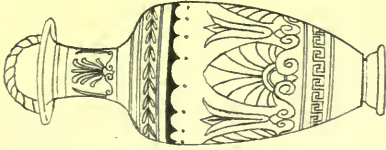
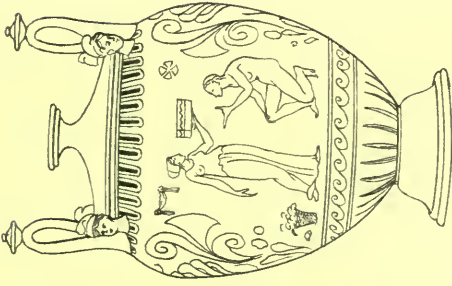
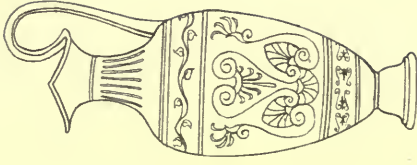


Bacchus

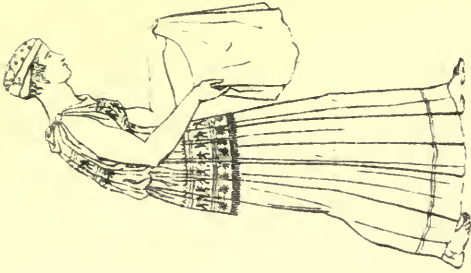
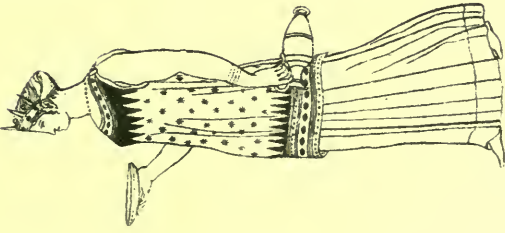
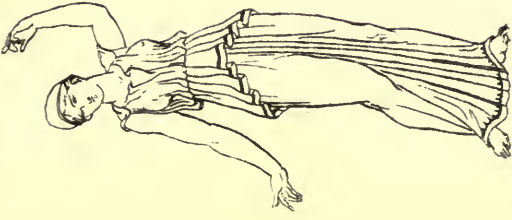
from a statue in my possession.



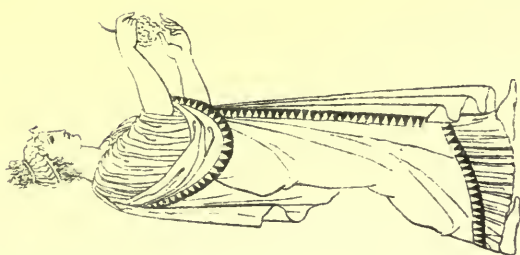
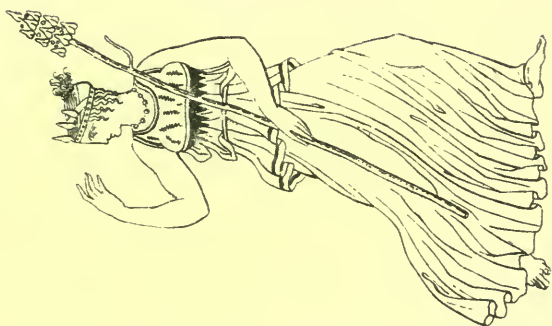
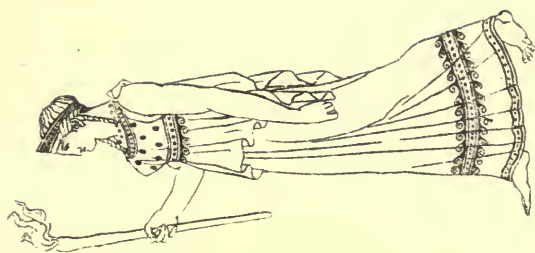
Grecian ornaments & scrolls



Greek fictile vases.



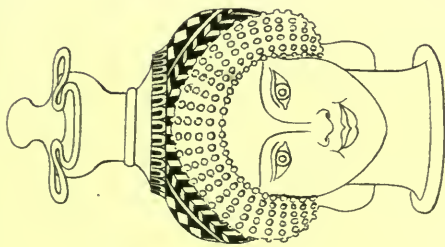
*Greek females
from Sicilian vases.*



*Bacchanalian figures
from fictile vases*



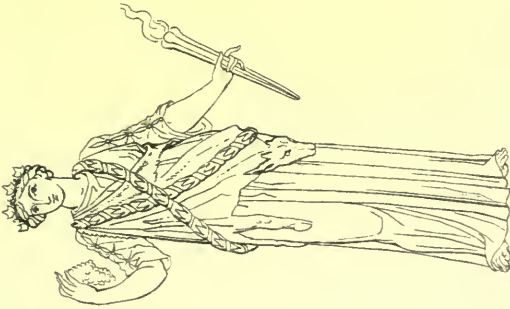
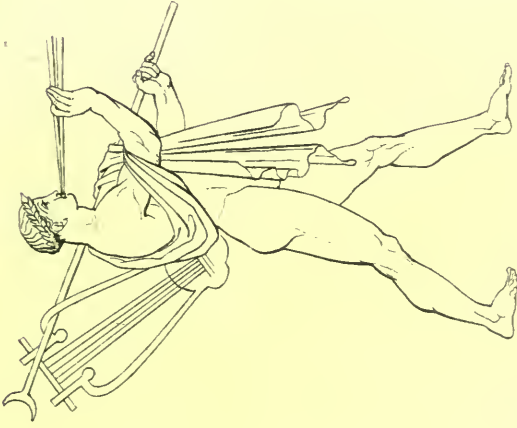
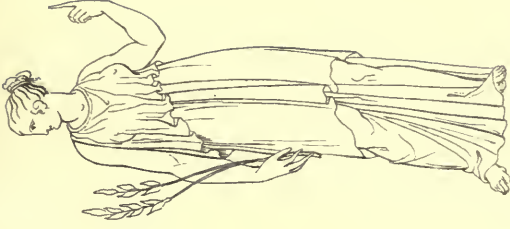
Ceres



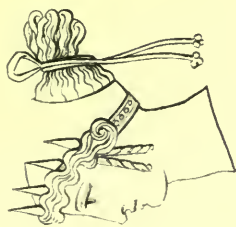
Greek terra cotta jug
in my possession



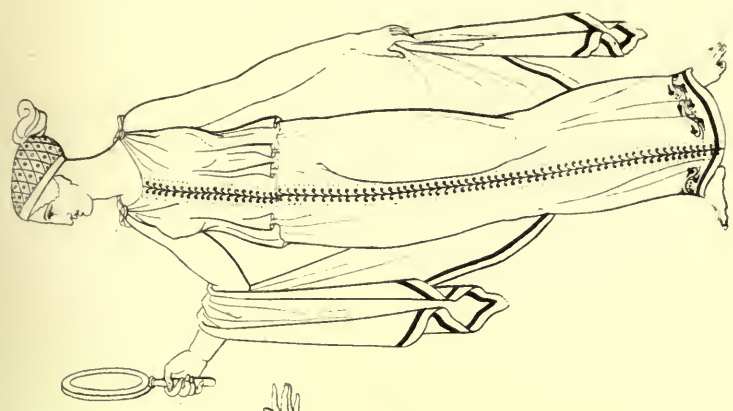
Muse



Bacchanalian personages



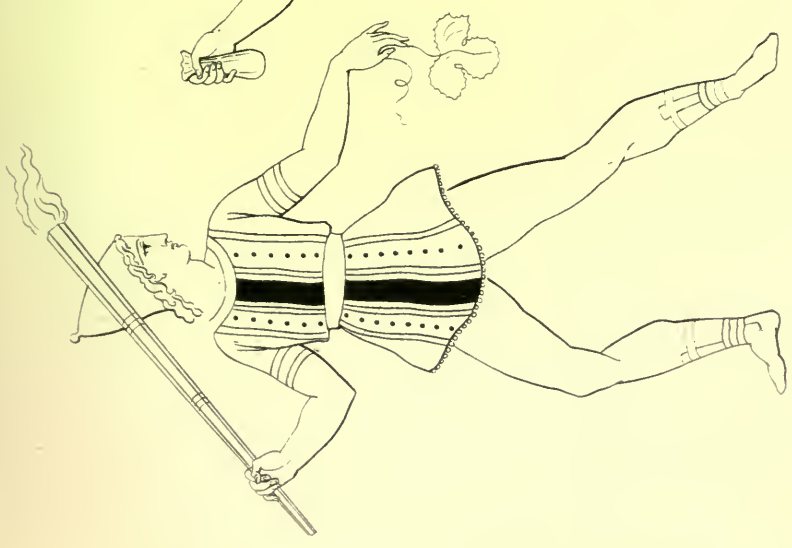
Grecian head dresses



Bacchante

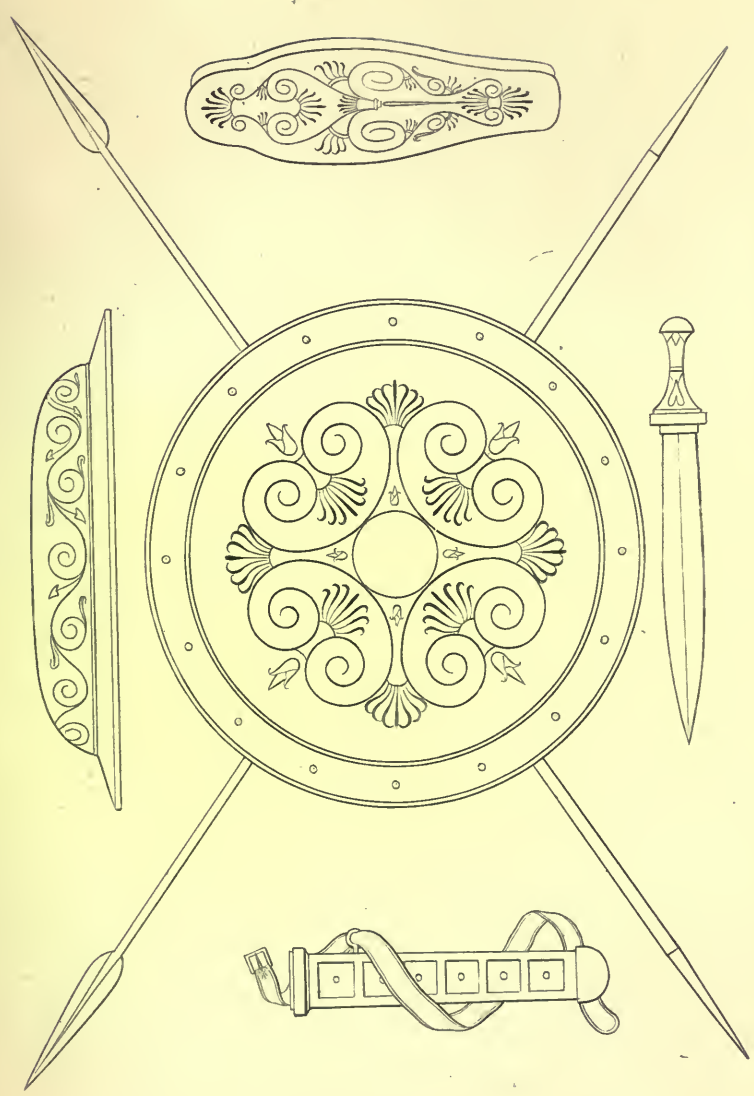


Mercury

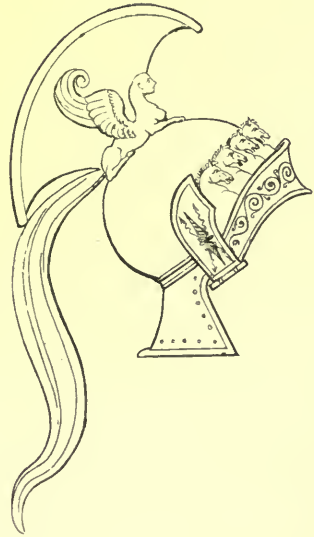
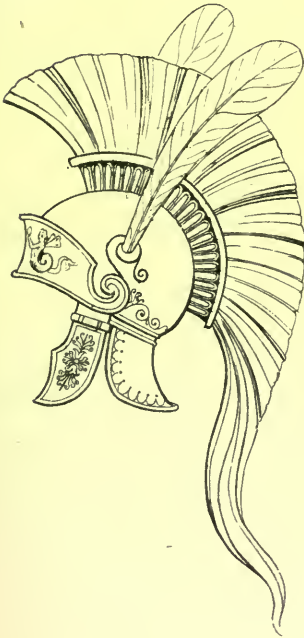
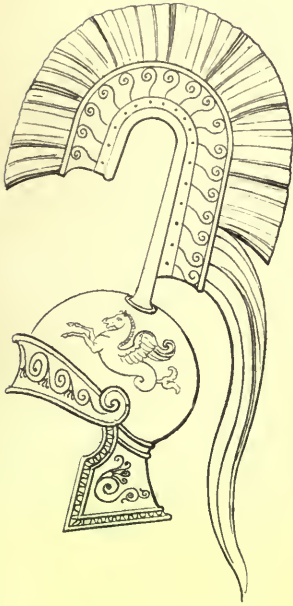


Bacchante



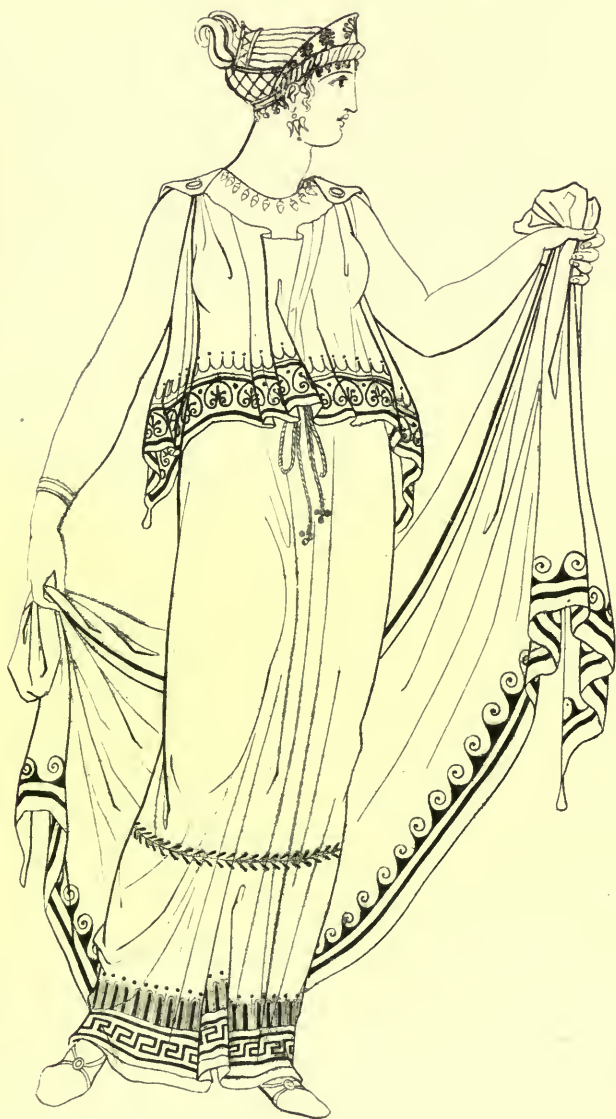


Greek shields, spears, sword, scabbard & greaves.



Grecian helmets





Grecian female





Grecian female





Bacchante dancing





Juno
wearing the diadema



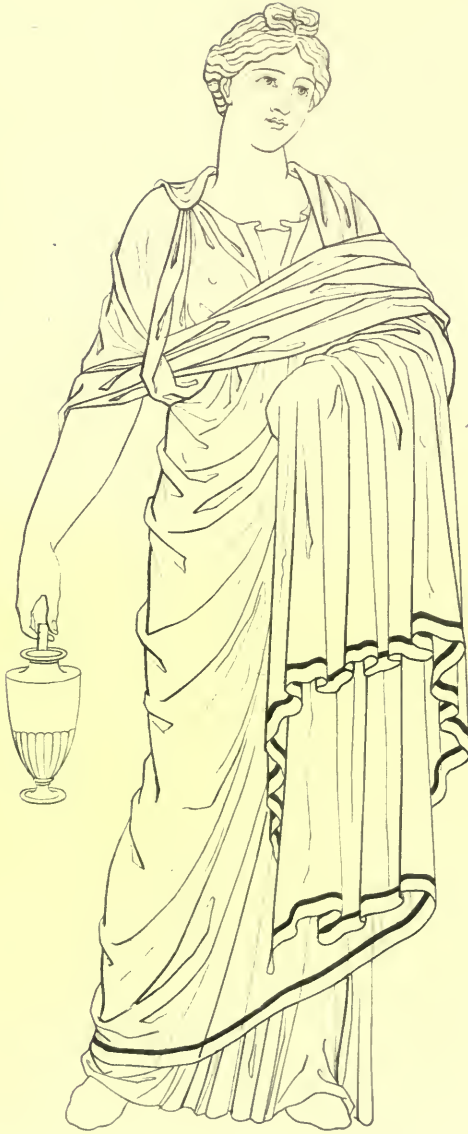


Greek poet

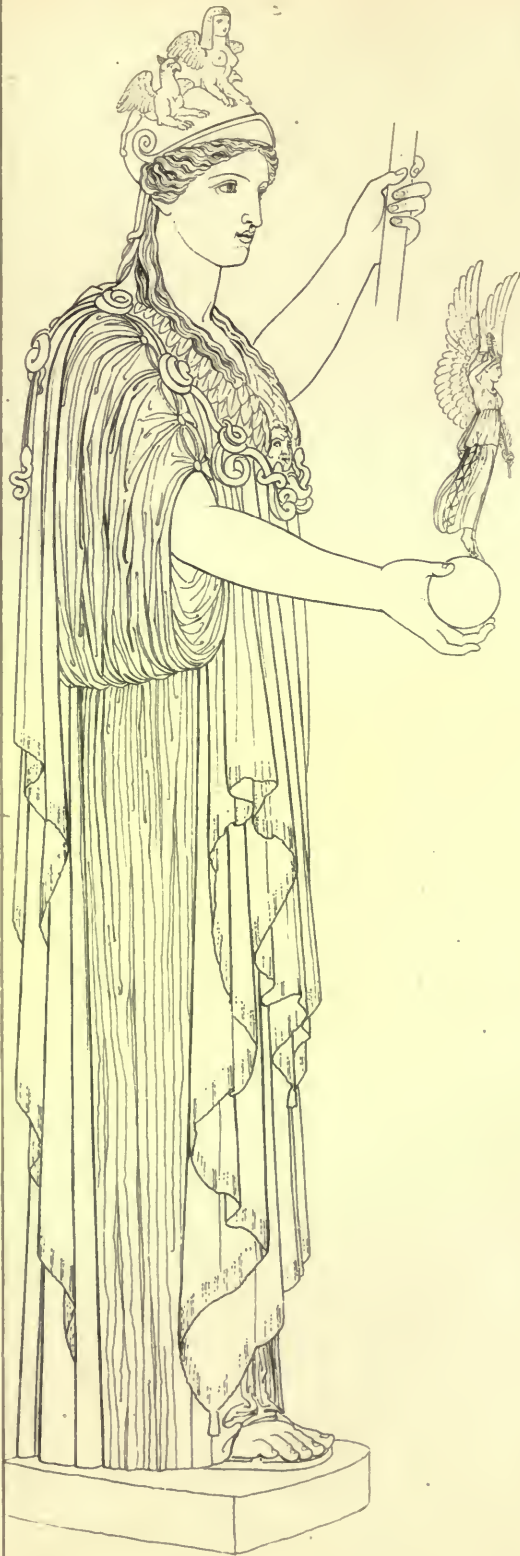




Diana



*Greek female
from a bas relief in the villa Borghese.*





Grecian female



1 Jupiter Ammon. 2 Neptune. 3 Cybele.
4 Minerva 5 Apollo 6 Mercury



Grecian female



*Grecian female
from a pithos vase in my possession*



Greecian female



1 Jupiter.

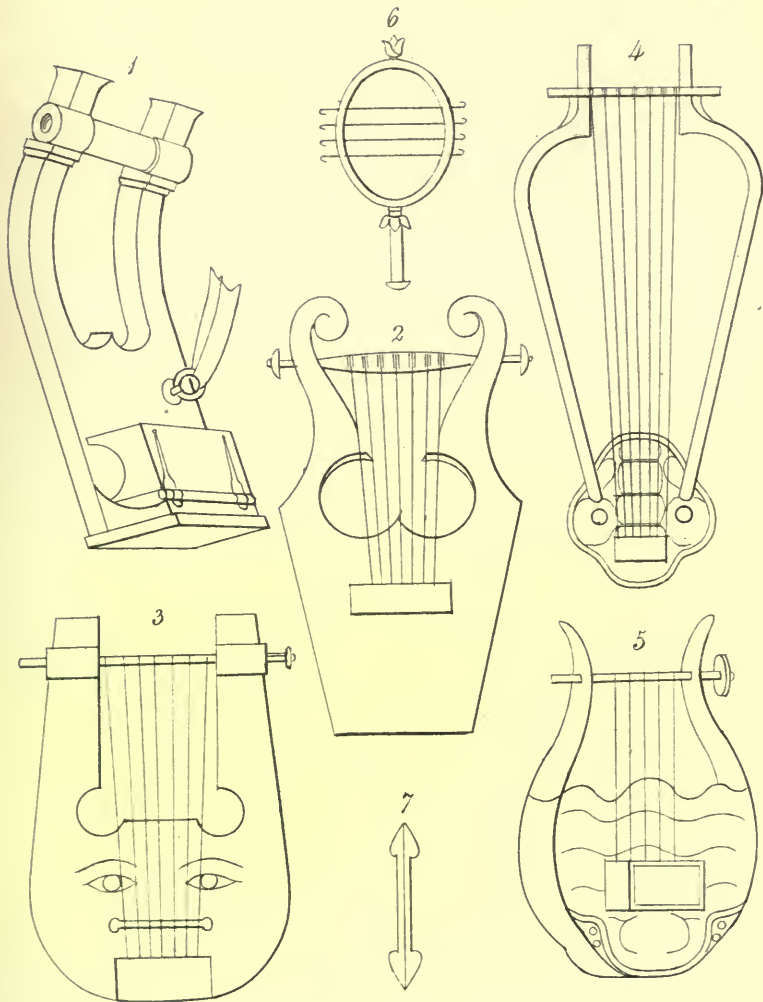
2 Juno

3 Apollo

4 Minerva

5 Hercules.

6 Bacchus



Musical instruments

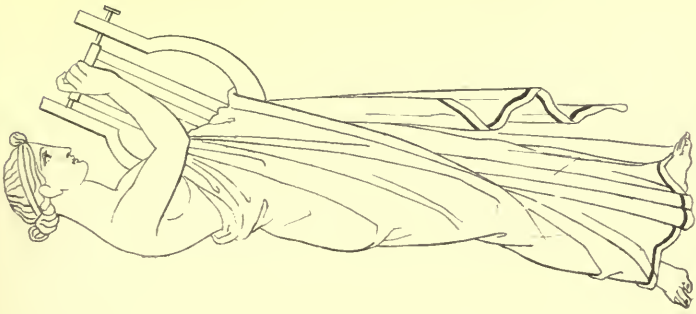
- 1 & 2. varieties of the phorminx
3. The Cithara
4. The Battery, or long Lyre
5. The Chelys, or testudo.
6. The Sistrum
7. The Plectrum, to strike the Lyre with



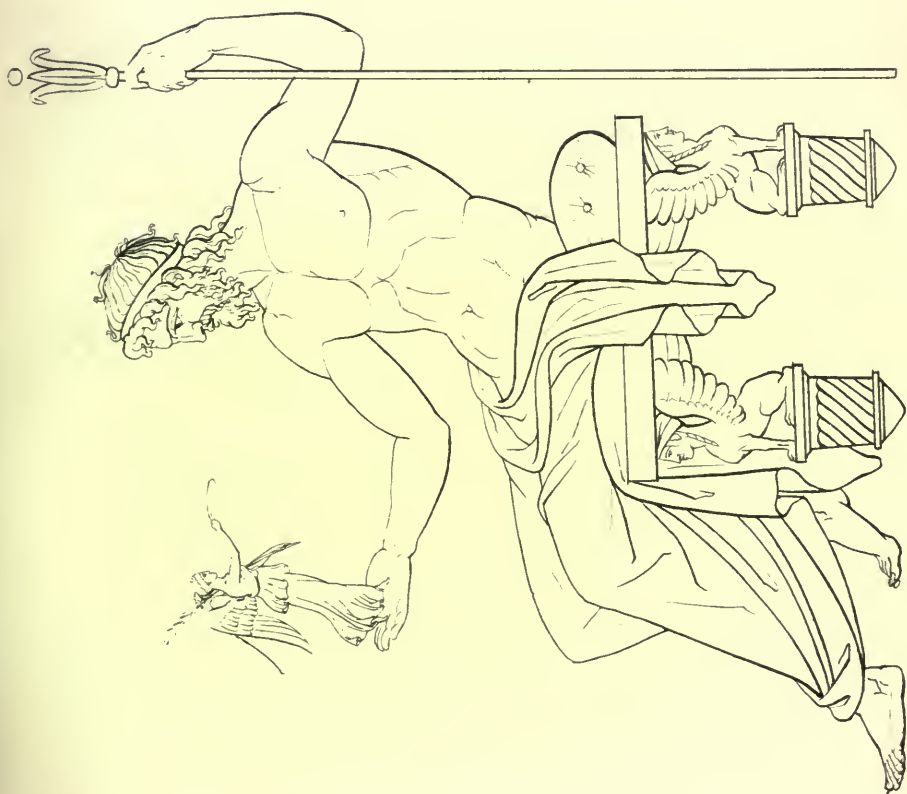
Grecian female



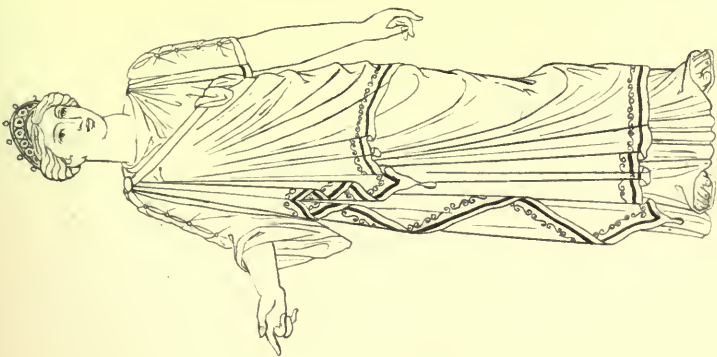
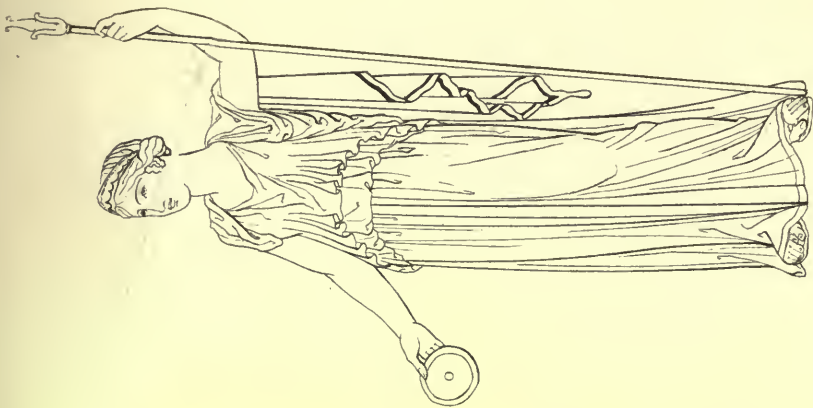
Grecian female.



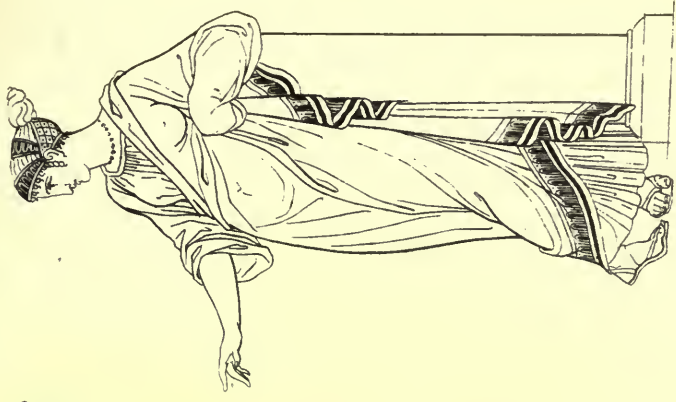
Females dancing & playing on the lyre



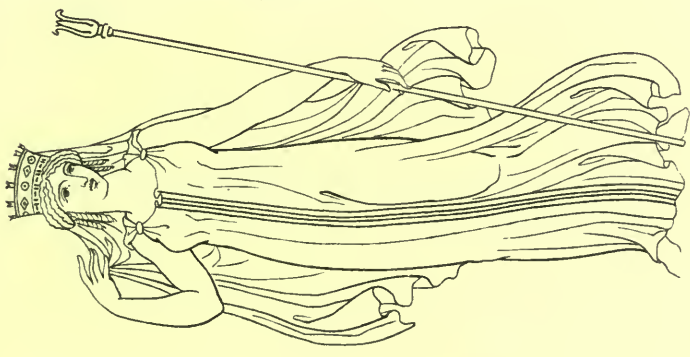
Jupiter



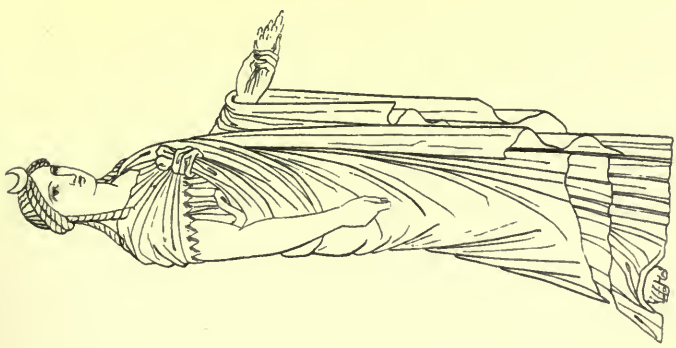
Juno
attired in various ways, from antique statues.



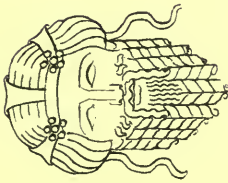
Venus



Ceres

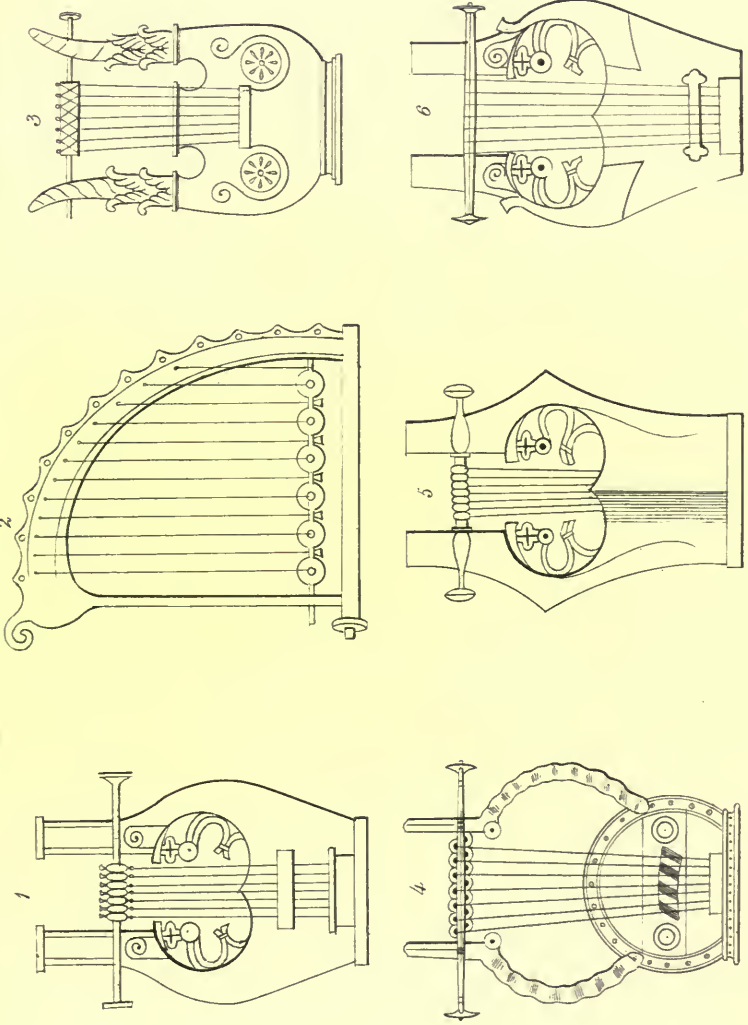


Diana



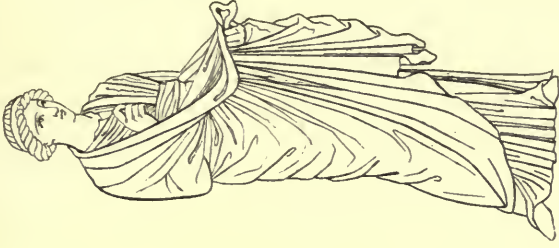
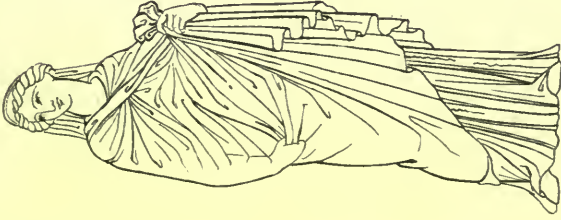
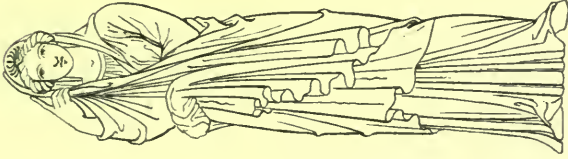
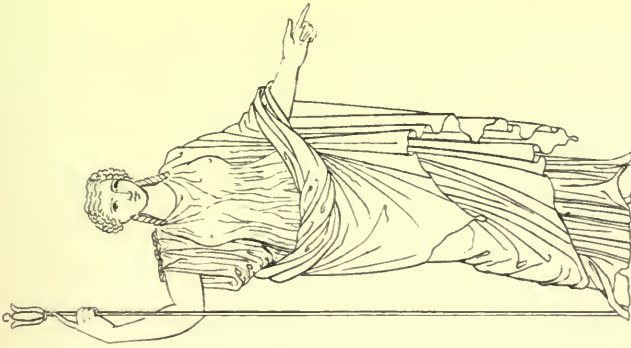
Some masks



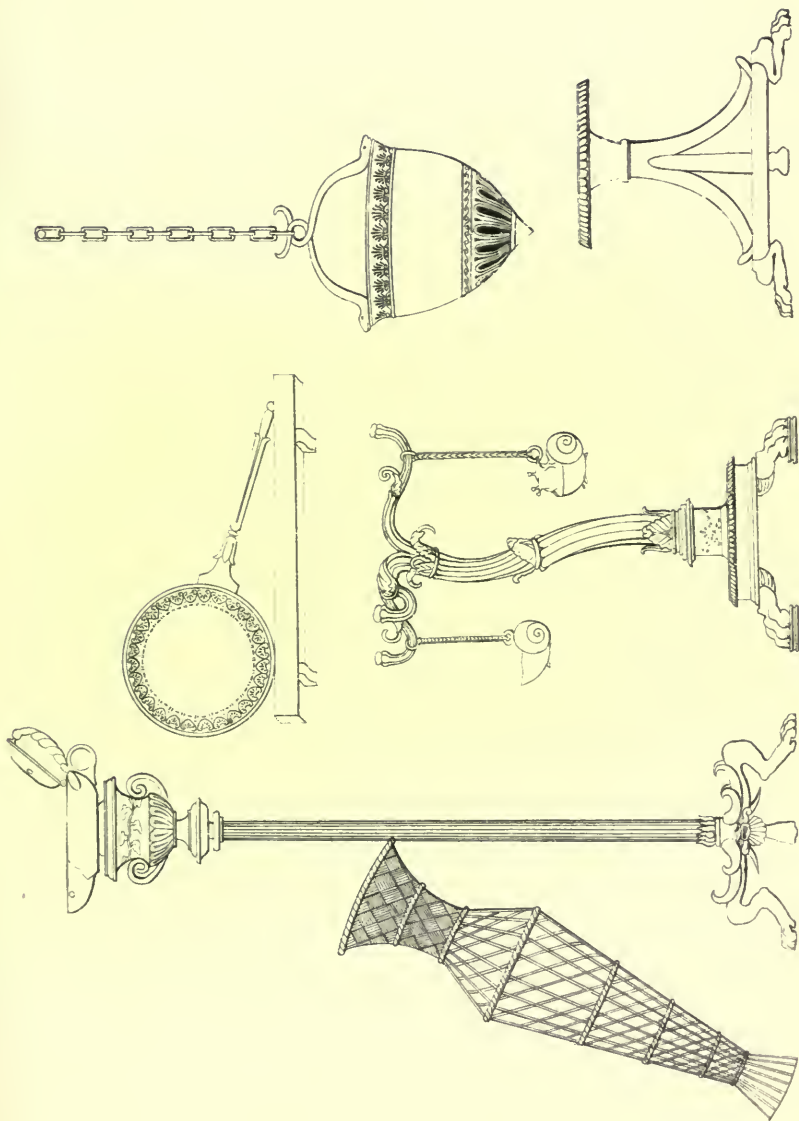


N^o. 1. 3. 4. 5. & 6. Varieties of the great type or phorminx. N^o 2 the baglam.

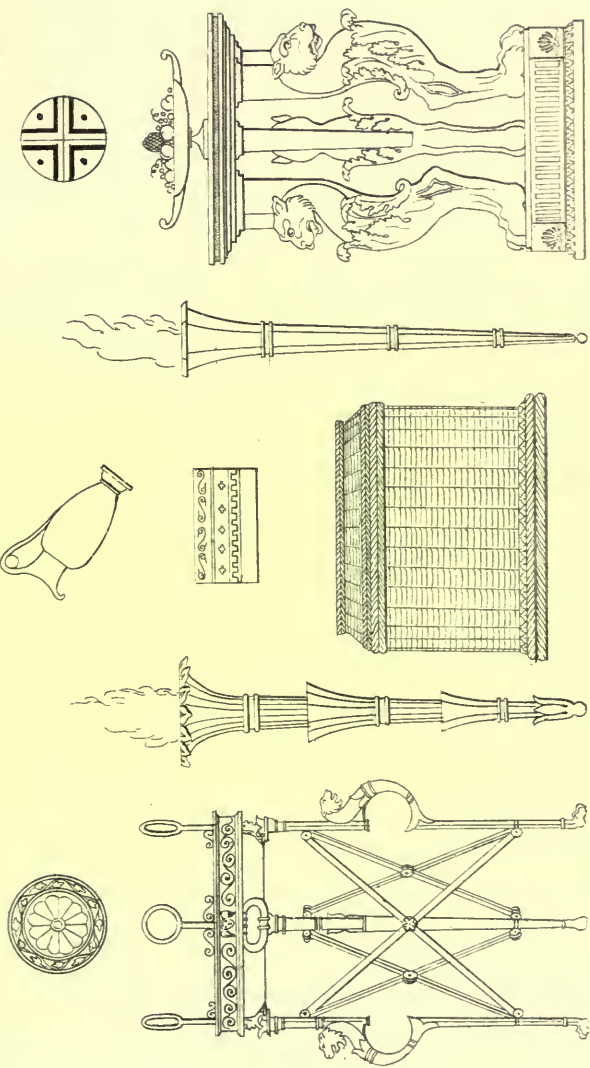




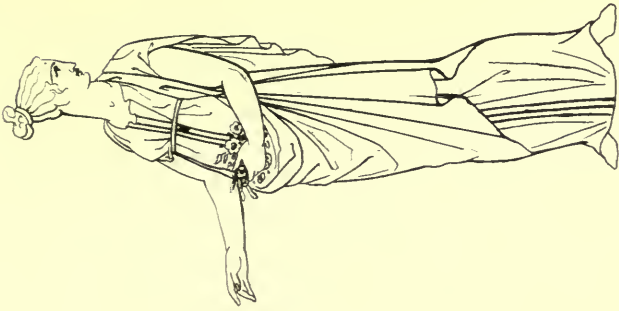
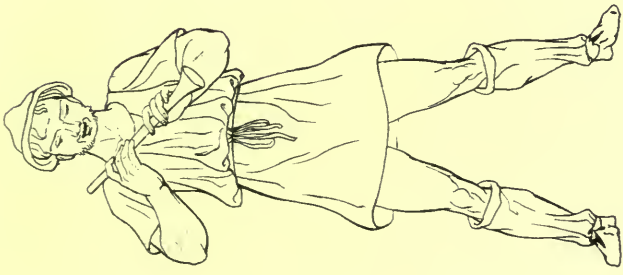
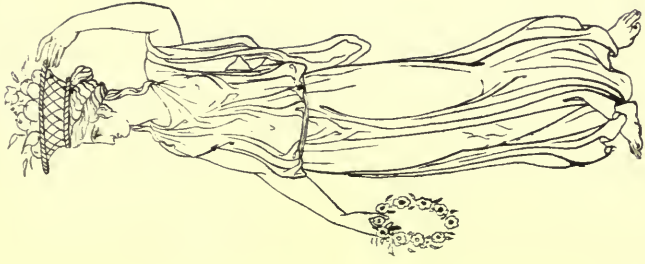
Grecian females; from statues in the Florentine gallery;



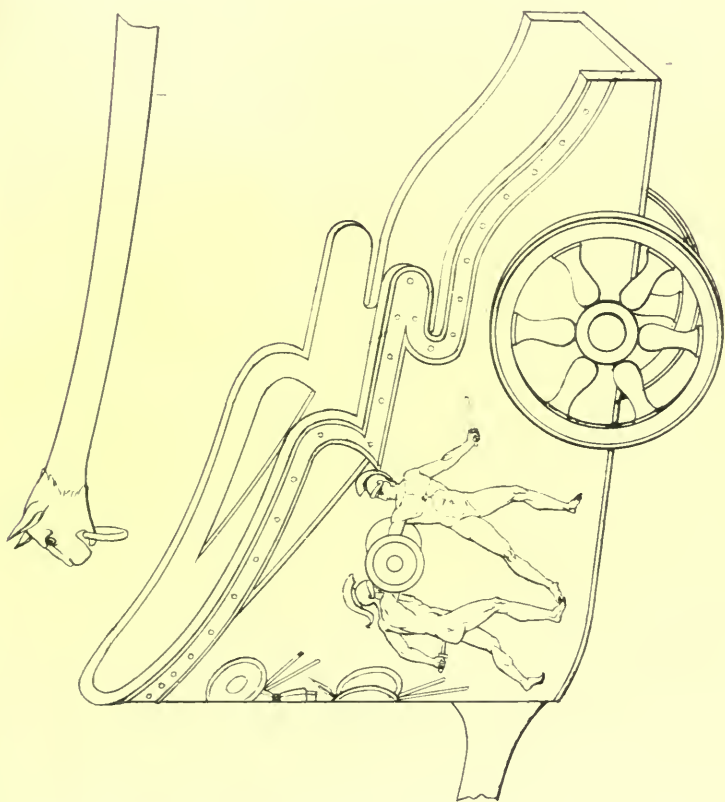
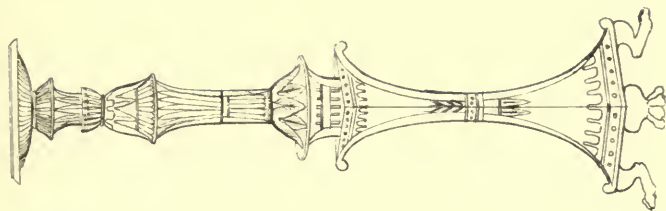
Greek lamps, candleabra, patina, basket, & other utensils



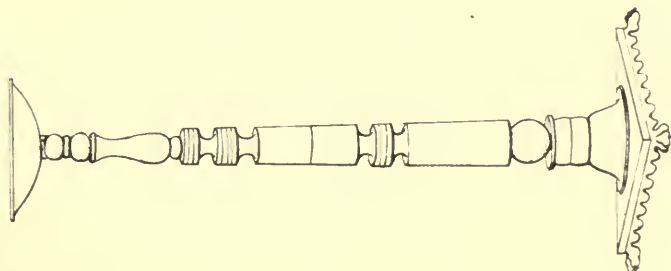
Foches, Arpeda, ciro, papato, sempulcum, pateta & consecrator cake.



Grecian peasants



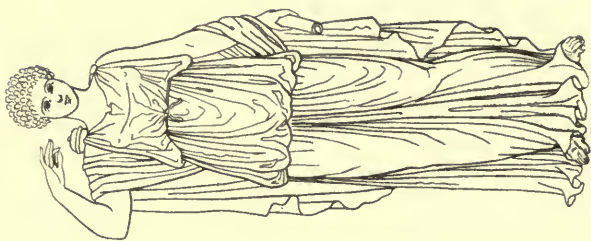
Grecian vase & candelabra







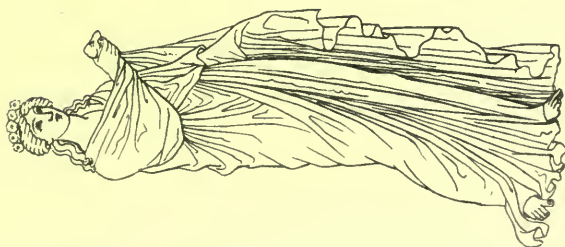
Greek females



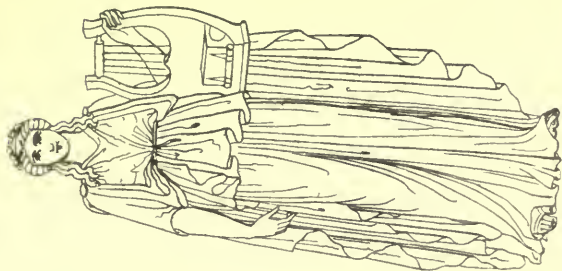
Diana



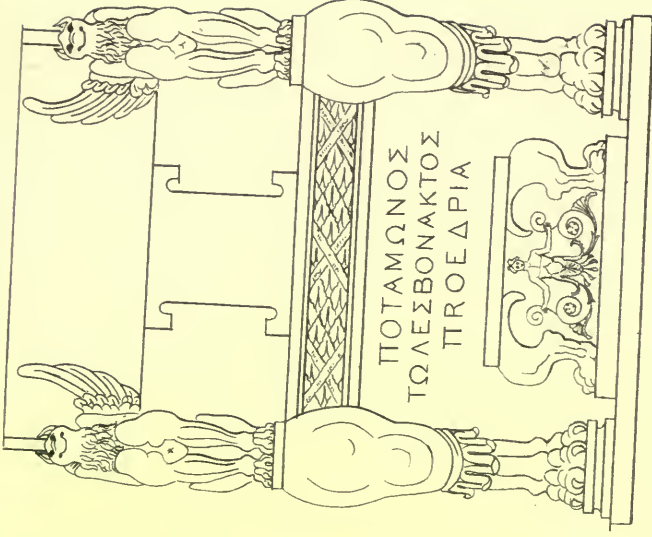
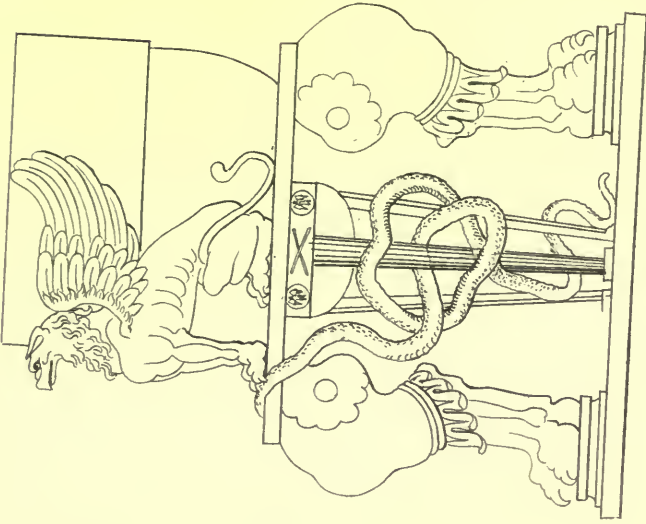
Muse



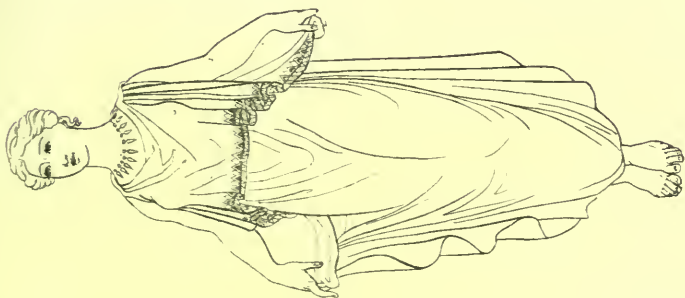
Muse



Muse



*Marble chair of Ptolemy, the Laocian between
still existing at Mytilene*



Dancing girls

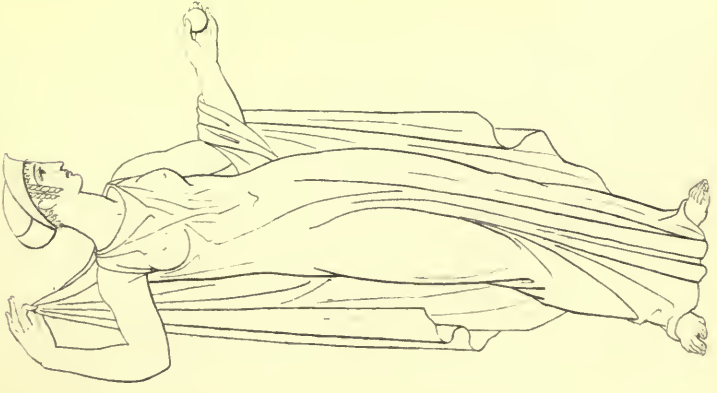




Diana'



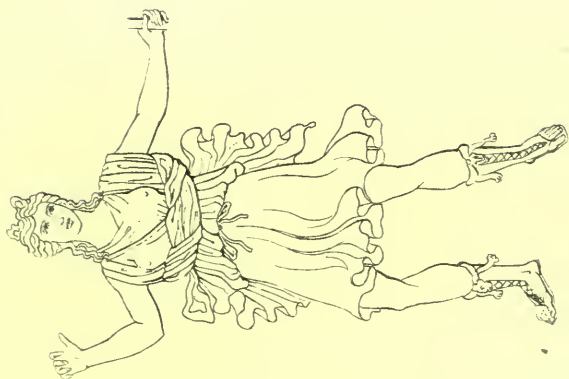
Miner'



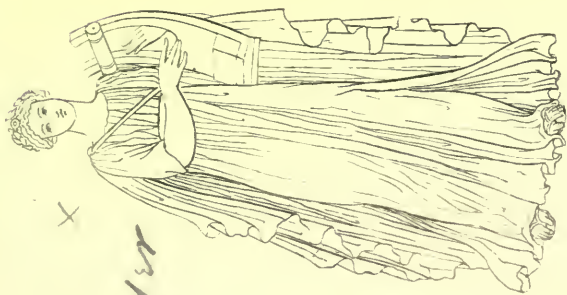
Venus'



Ceres



Liana succinea



Spodo murgeta

me x
Wyer



Minerva

from a statue in my possession



Comedian



*Grecian female
from a statue at Florence*



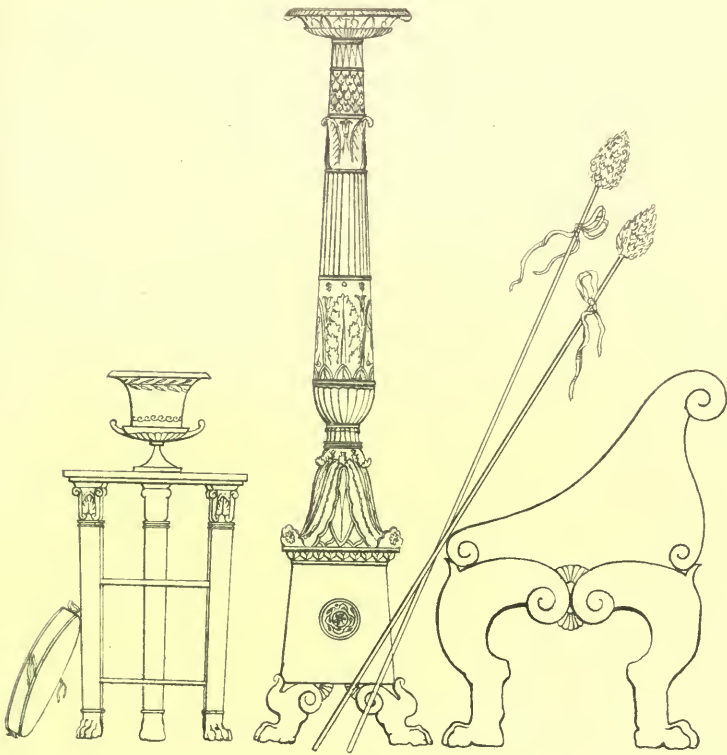
Canephora
from a statue at Dresden



Grecian female



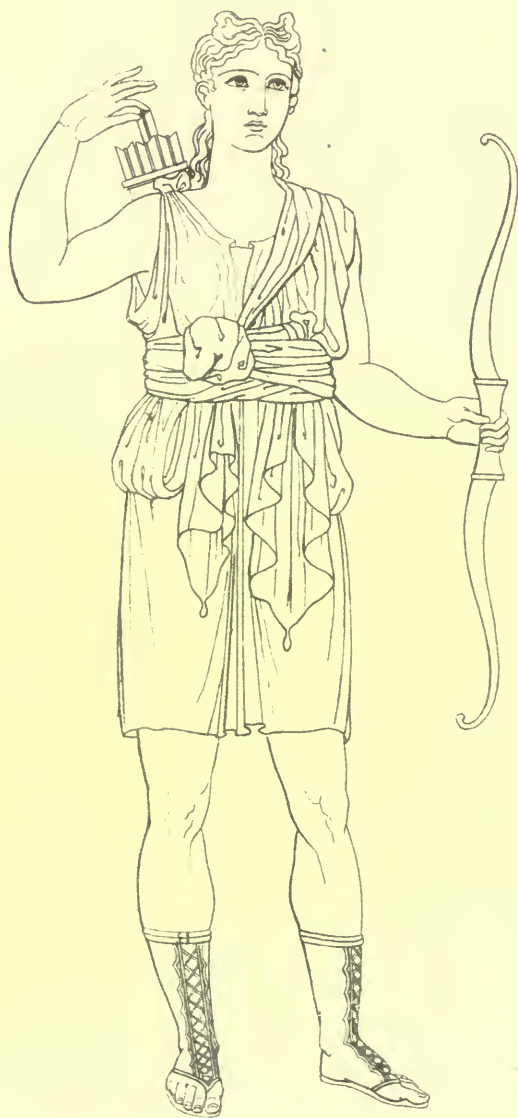
Grecian lady



Tripod, candelabrum, chair. &c



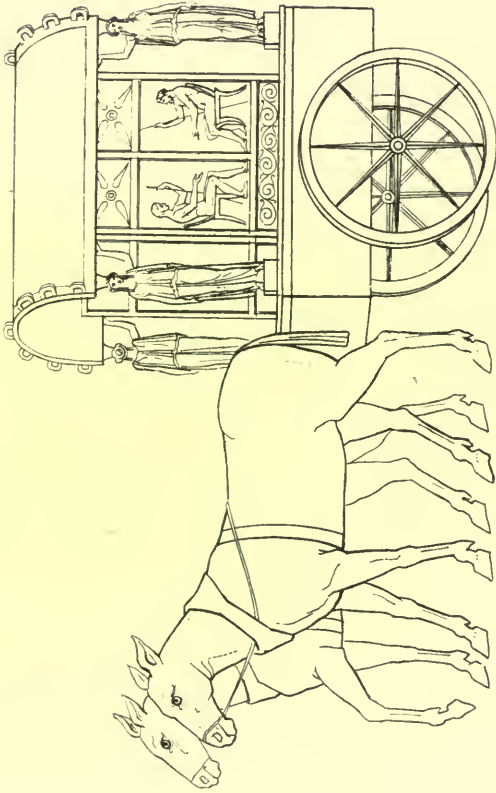
Grecian female



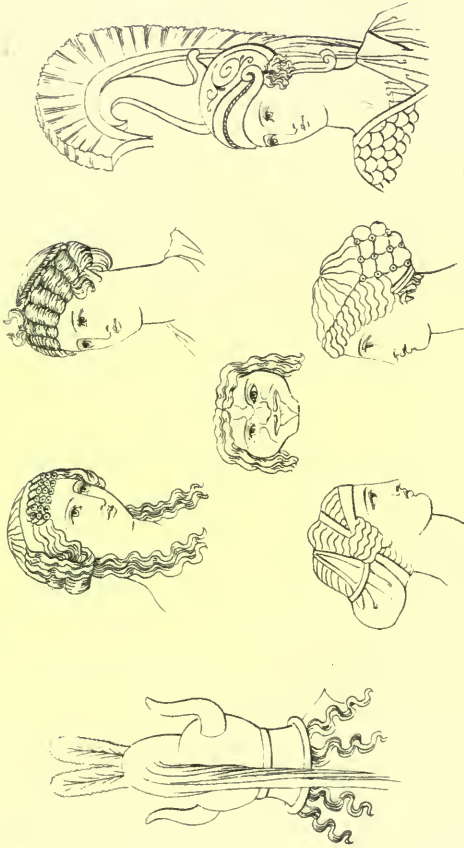
Diana succincta



Greek vases.



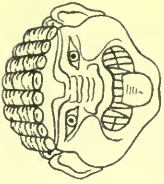
Funerary sanctuary



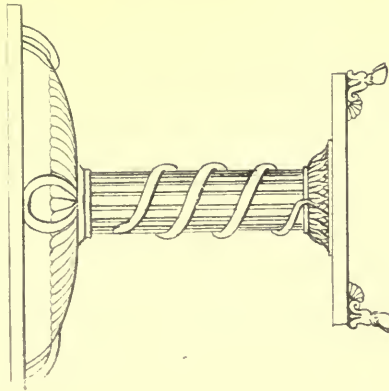
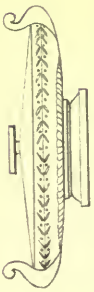
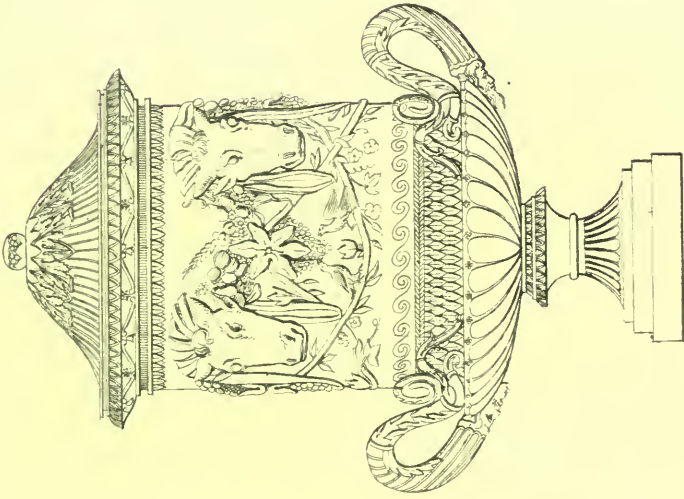
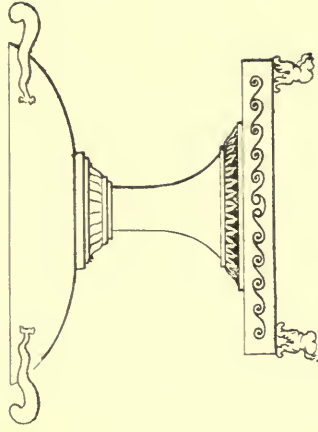
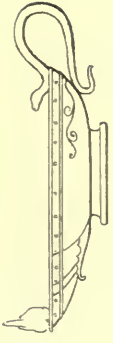
Grecian heads



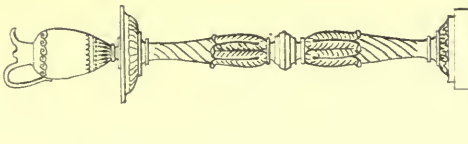
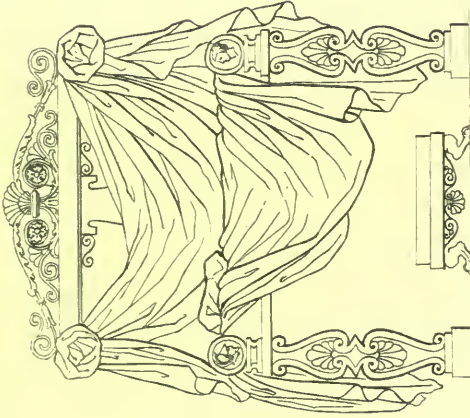
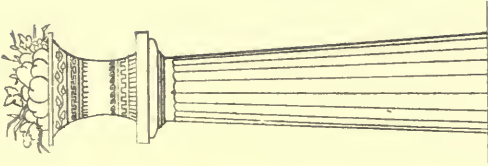
Reception of Bacchus



Gorgons



Vases, patenas, lamp, &c.



*Chair of state
& other pieces of furniture*



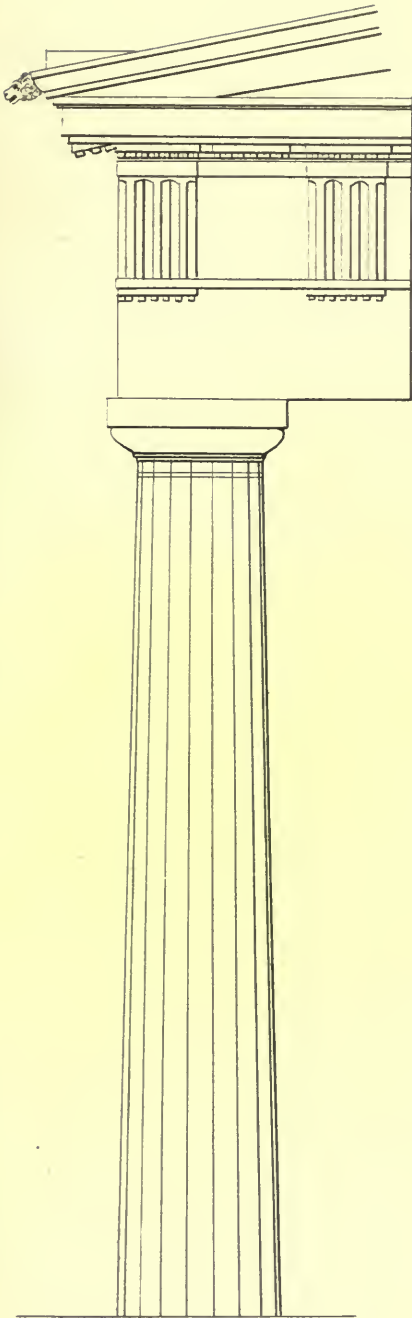
Greek lady



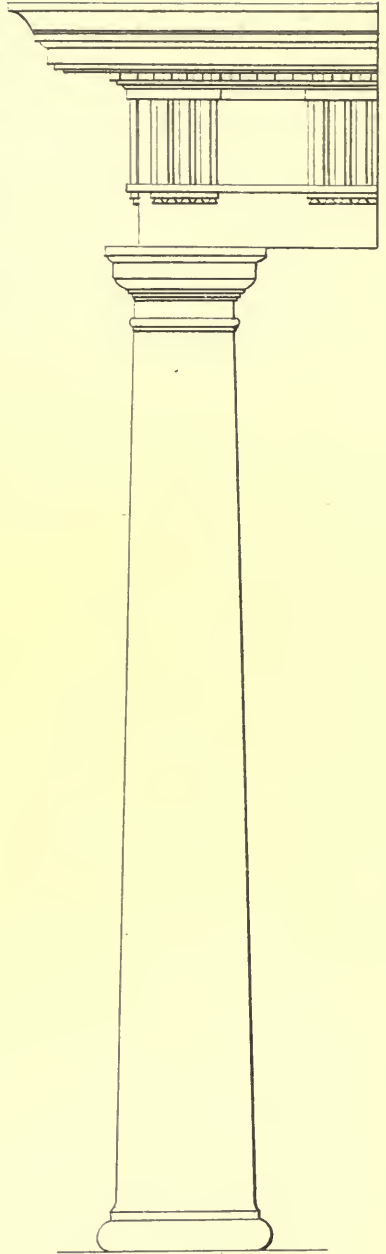
Apollo Musagetes
from the vatican



Vase with Bacchanalian



Doric

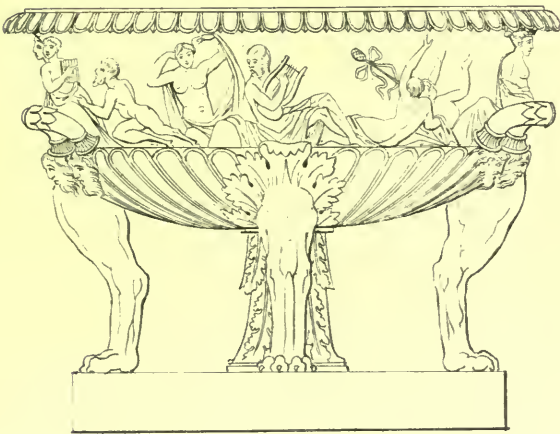
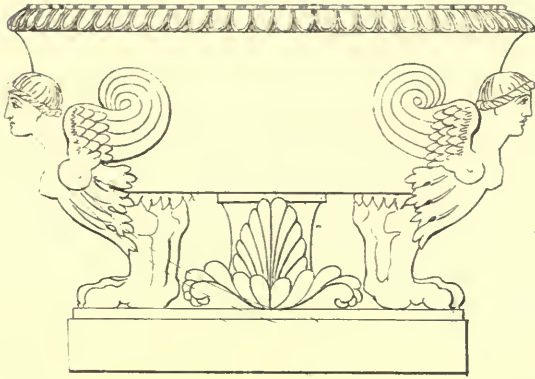


Roman



Faustina

*wife of Antoninus Pius
from a statue in the Vatican*



Roman Cisterns

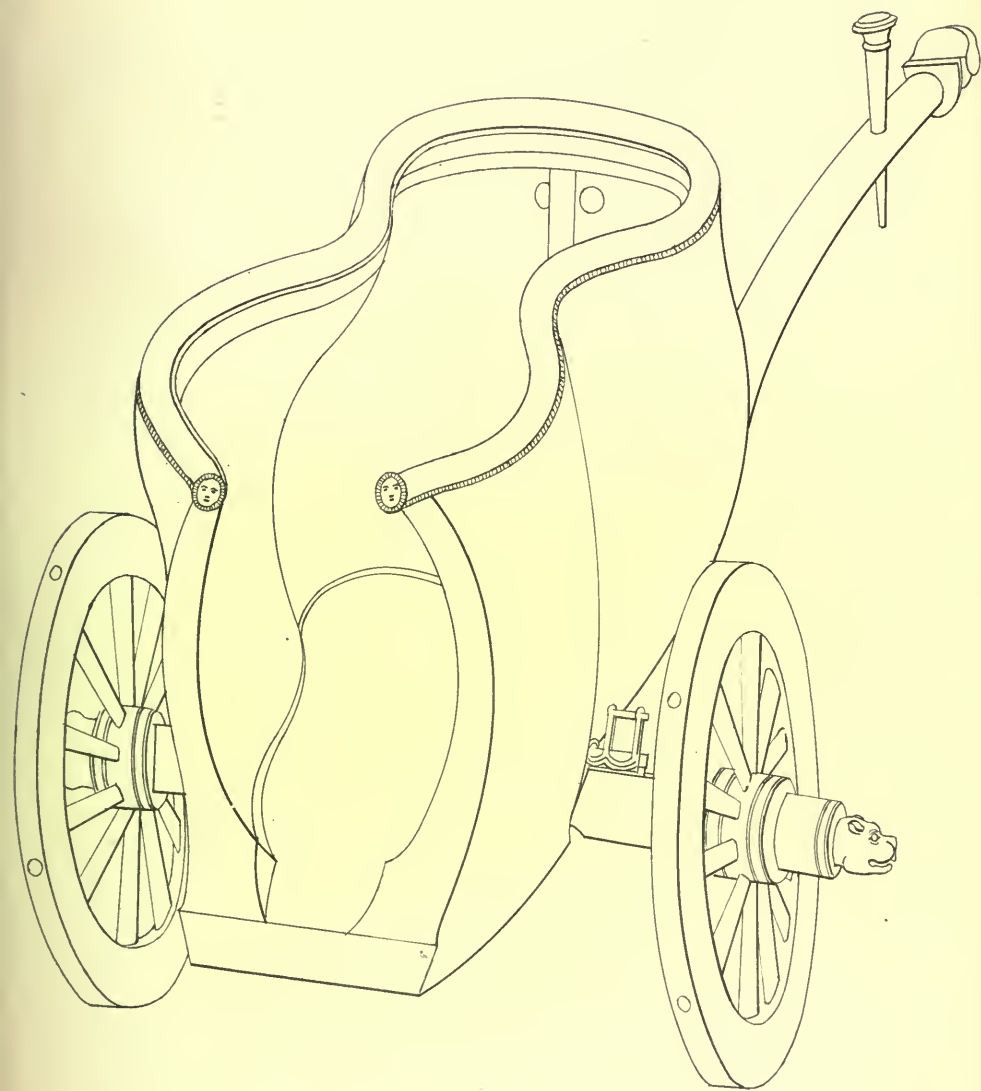


Flora



Fortune

Montfaucon, Vol. 2



*Car of bronze
dug up some years ago near Rome*



Roman
in his toga



*Roman youth.
with the bulla.*



Roman orator.



*Roman matron.
from a statue in the capitol.*



Roman Ladies



Marcus Aurelius
from a statue at Venice



Roman empress



Faustina.
Wife of Antoninus Pius.



*Roman Empress
in the character of Ceres.*



Roman head dresses.



Roman Emperor
assisting at a sacrifice
in his paludamentum.



Camillus

*or. assistant at sacrifices
from a statue in the Borghese villa*





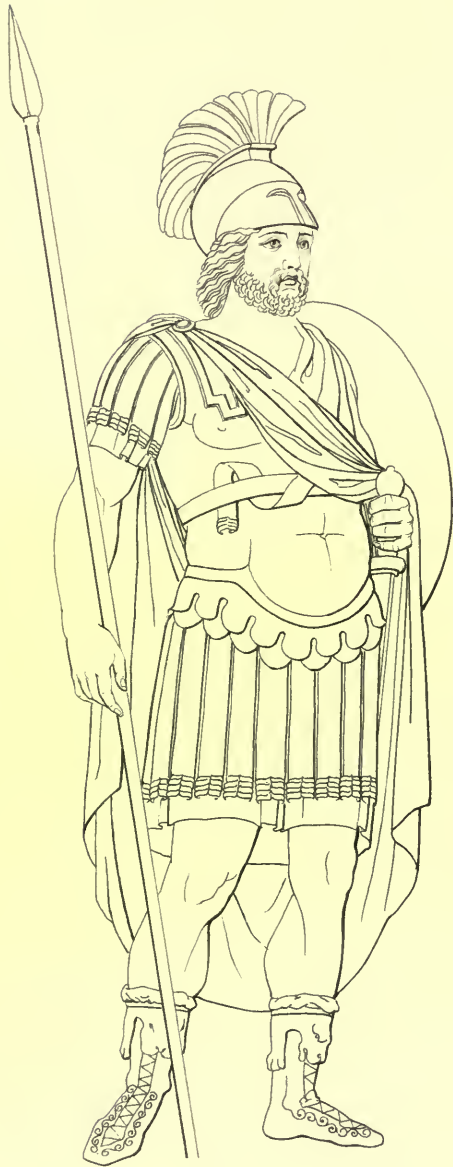
Roman Emperor
in his military tunic & paludamentum
unarmed.
From the Trajan column



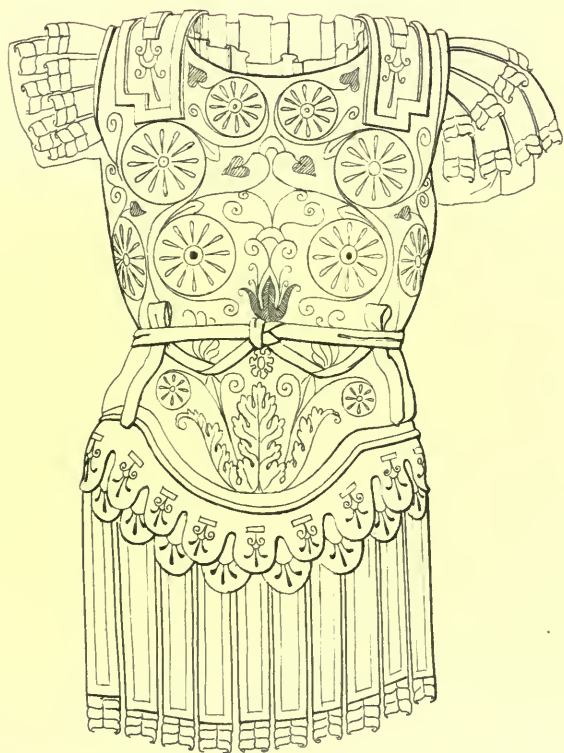


Roman standard bearer.





*Roman General
from the arch of Constantine at Rome*



Roman cuirass
on a small bronze figure found in Suffolk
in the possession of the Earl of Northampton



*Roman soldier
from the Trajan column*





Roman emperor



*Roman general
from the Trojan column.*



Roman general



*The goddess Roma
from the arch of Constantine at Rome.*



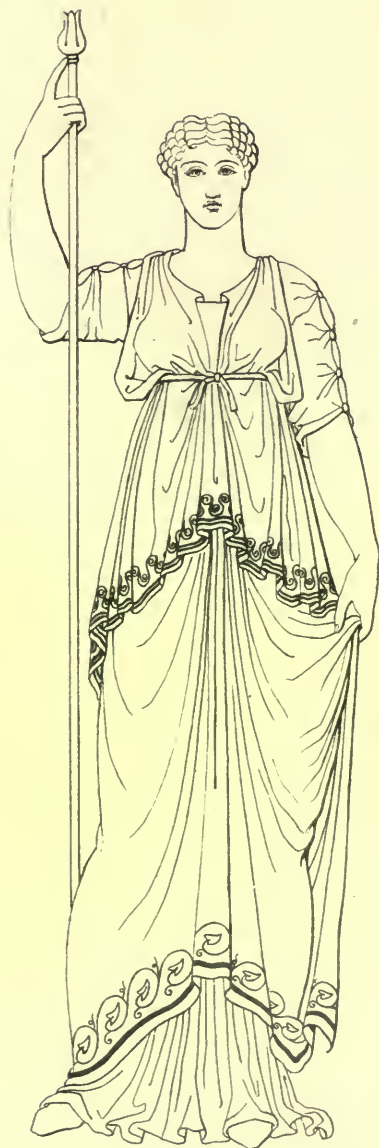


Nemesis

from a statue in the villa Borghese



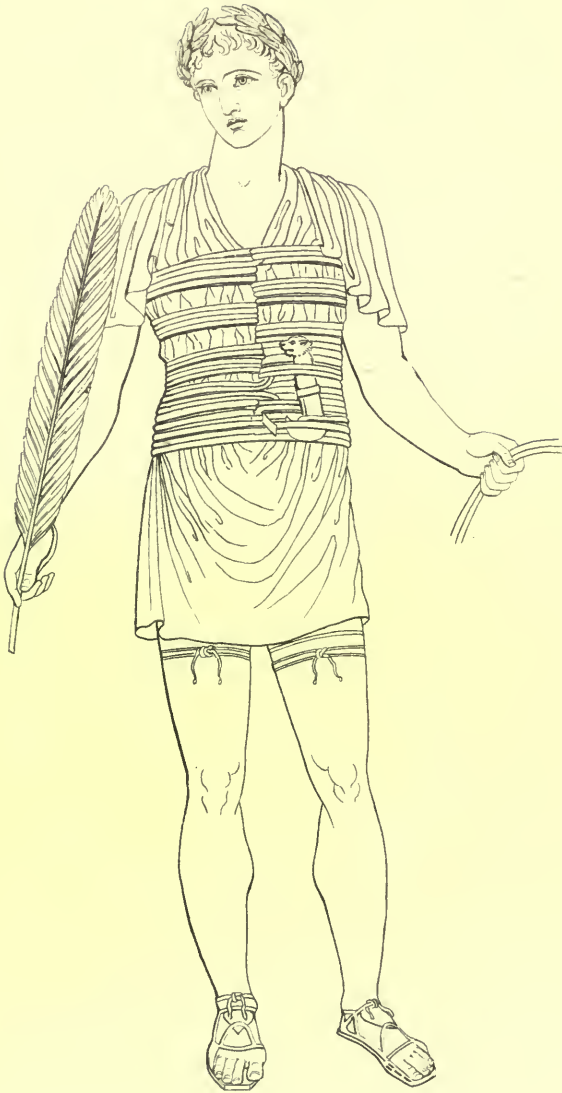
*Roman empress
with the attributes of plenty,
from a statue in the villa Borghese*



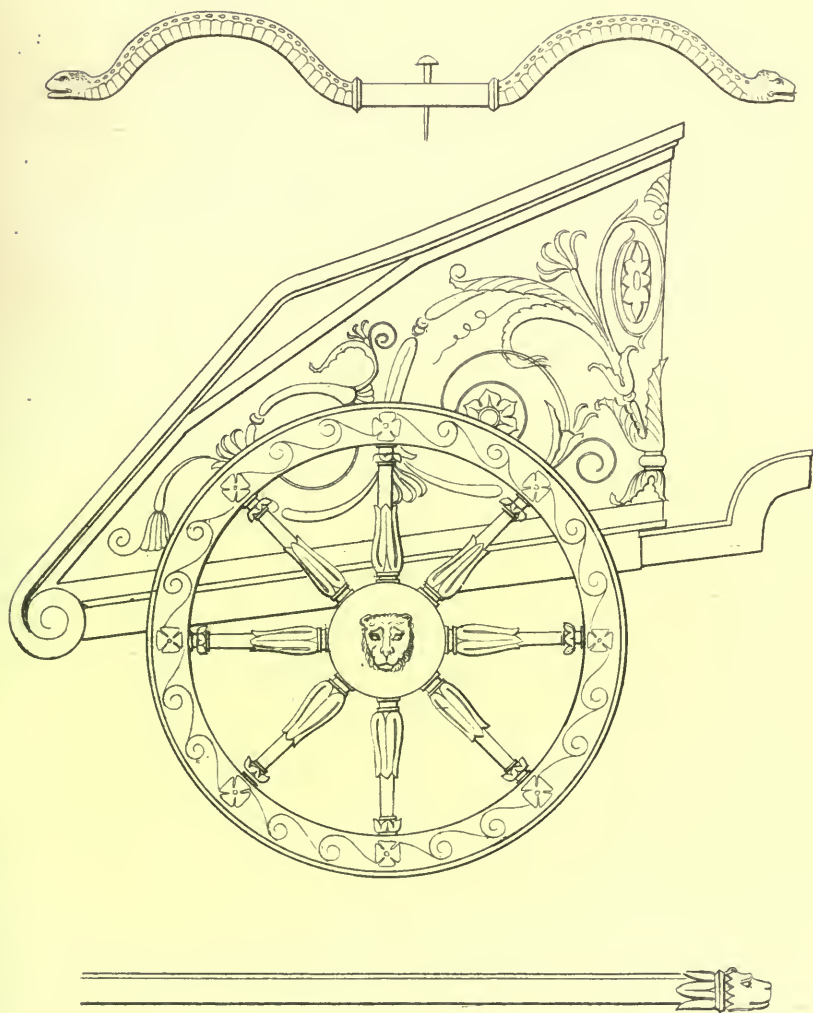
Roman empress.



Roman Empress.



*Victorious auriga, or driver
in the games of the Circus
from a statue in the Vatican*

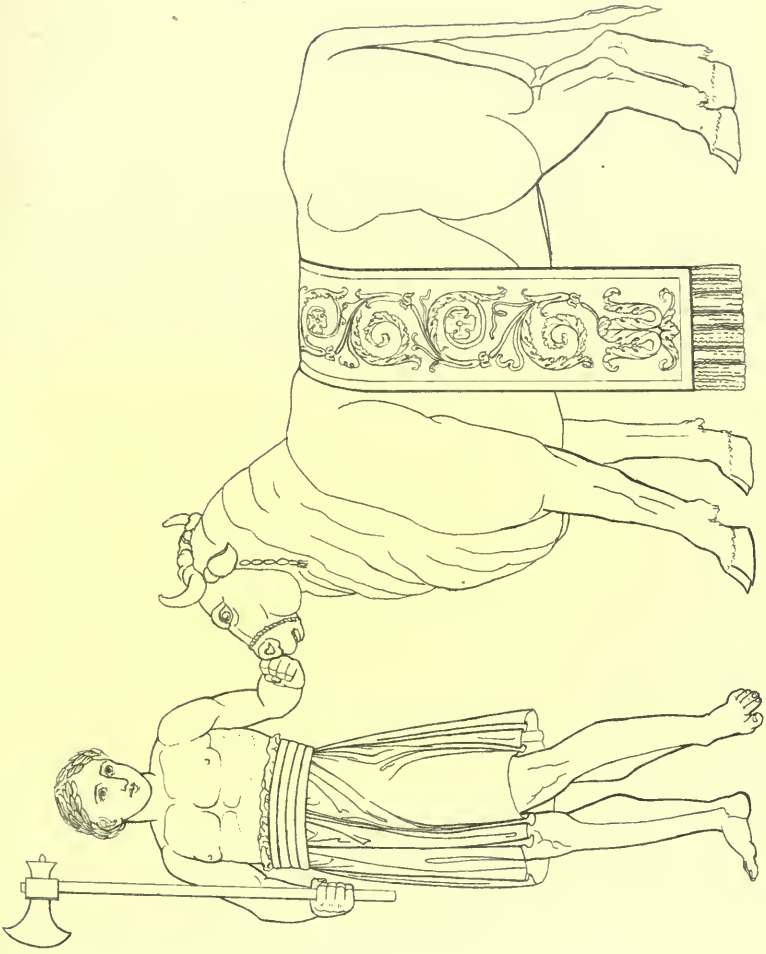


*Biga
in the Vatican*





Roman chariot driving in the Circus



Bull adorned for sacrifice.

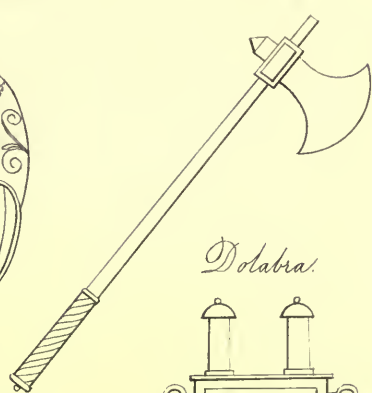
Patera



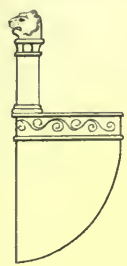
Flamens helmet



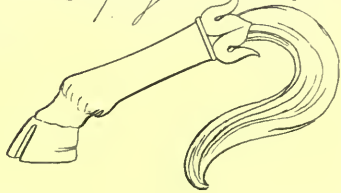
Hasta



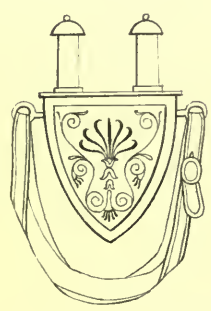
Dolabrum



Aspergillum



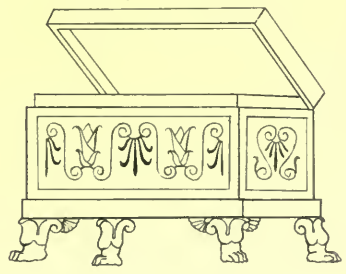
Dolabra



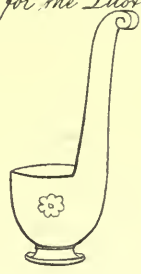
Lituus
of the augurs



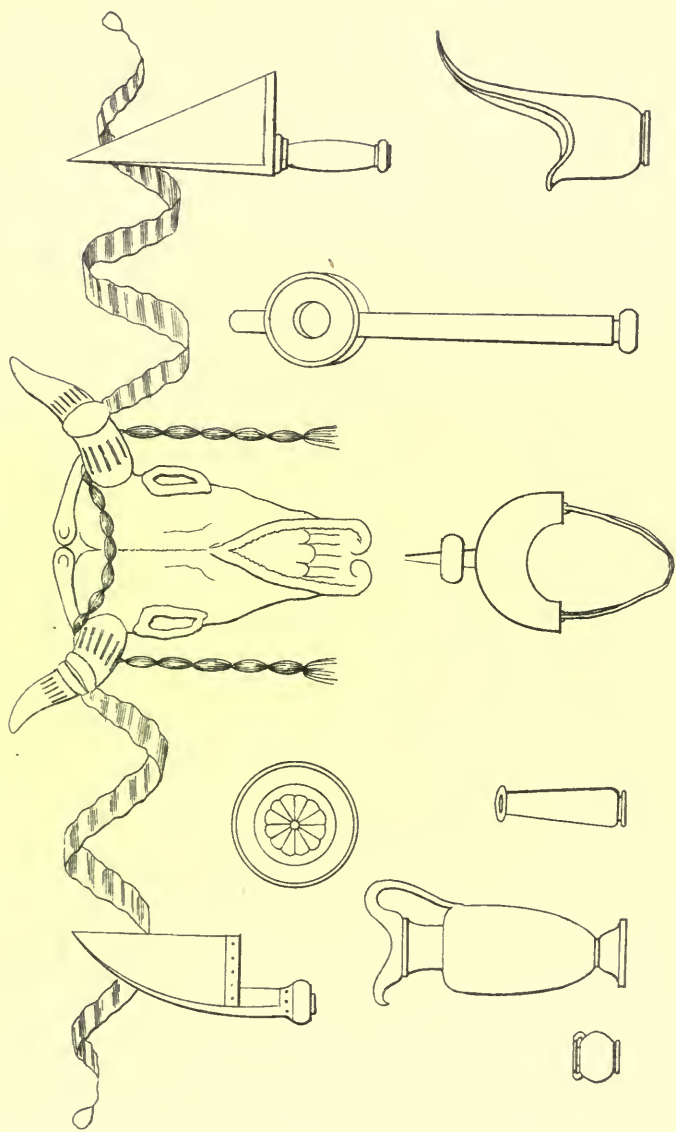
accetra, or incense box.



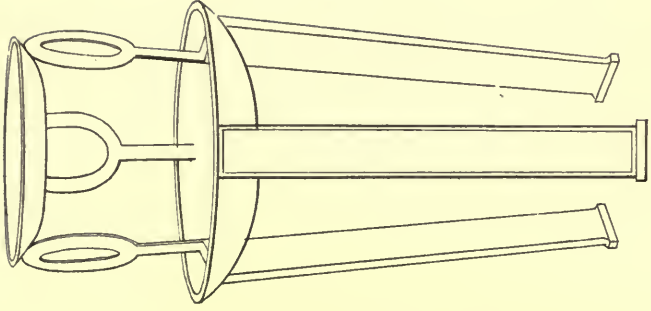
Simpulum
for the Libtral water.



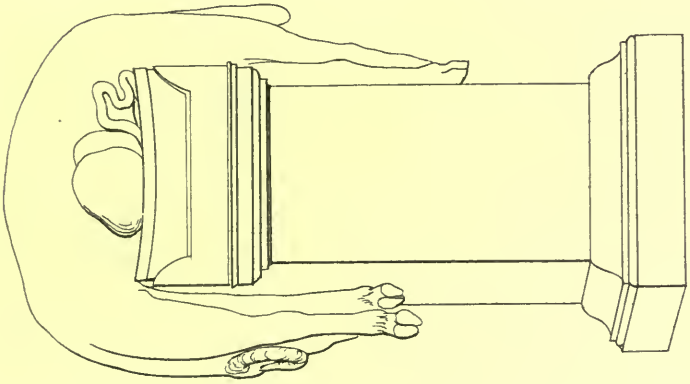
*Pontifical insignia
& sacrificial instruments
from the frieze of the temple of Jupiter, bonans
at Rome*



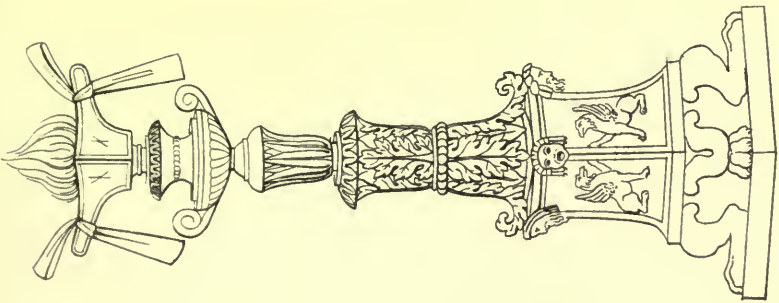
Sacrificial instruments



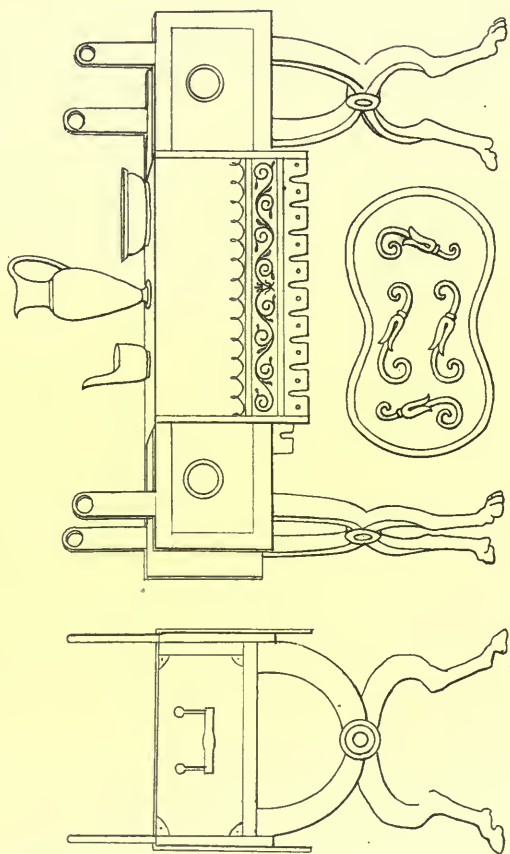
Tripod.



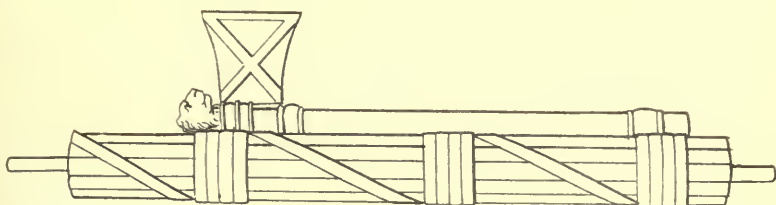
Altar.



Candelabrum

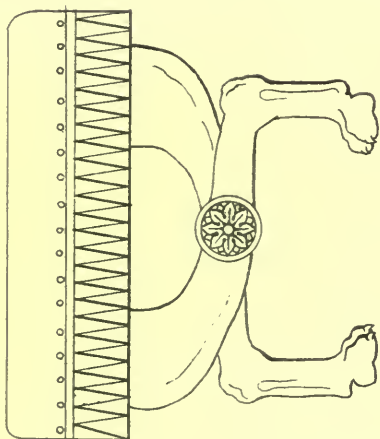
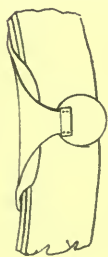


Lachosternum
and anode, or shield of the *Lachosternum*

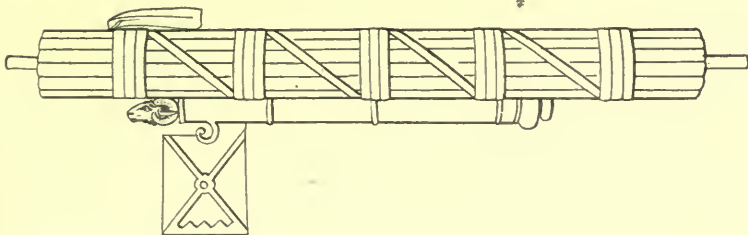


Fasses

Bulla

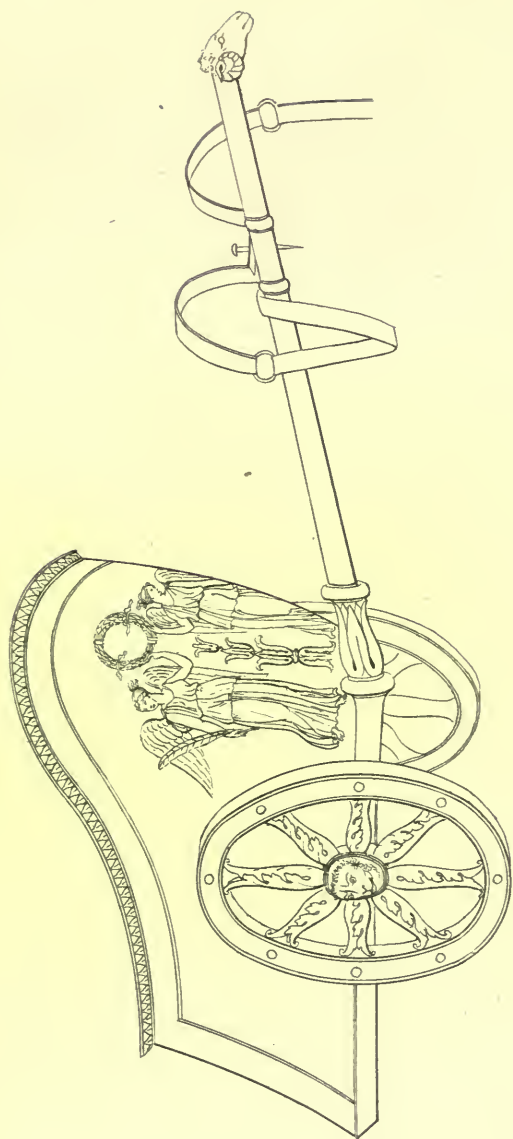


Curule chair

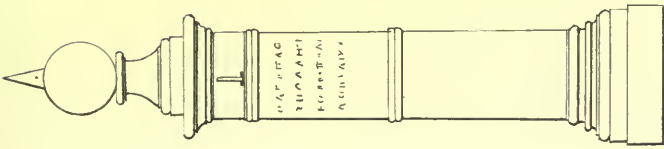


Fasses

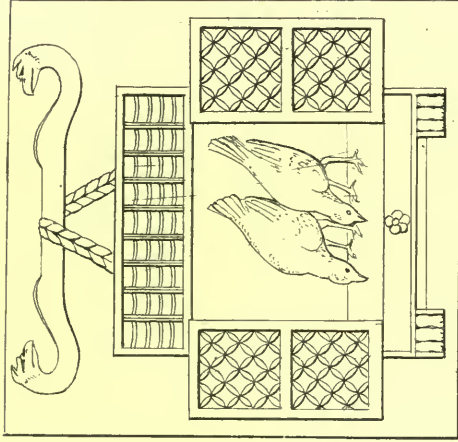




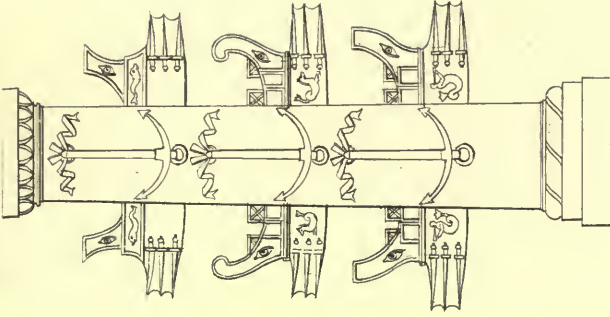
Triumphal car



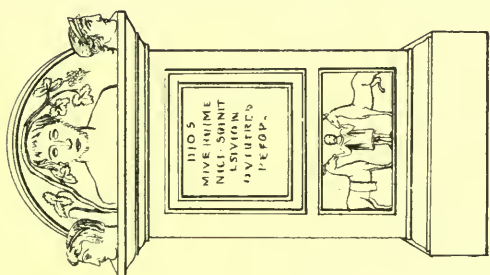
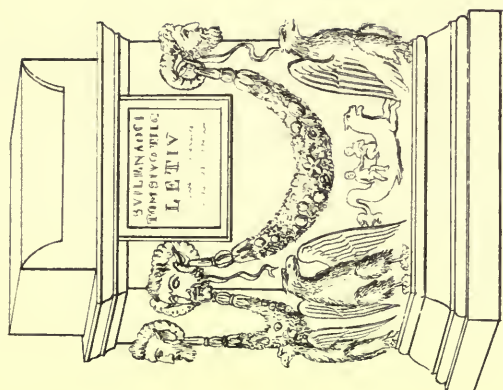
Male Stone



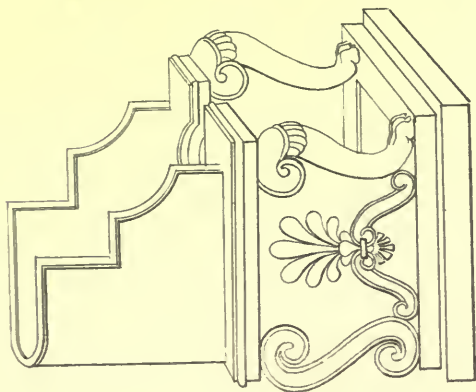
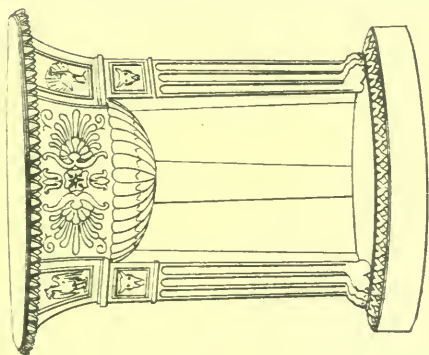
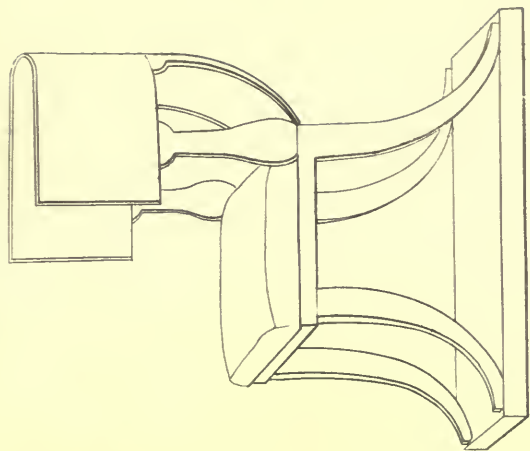
Cage of the sacred pullets



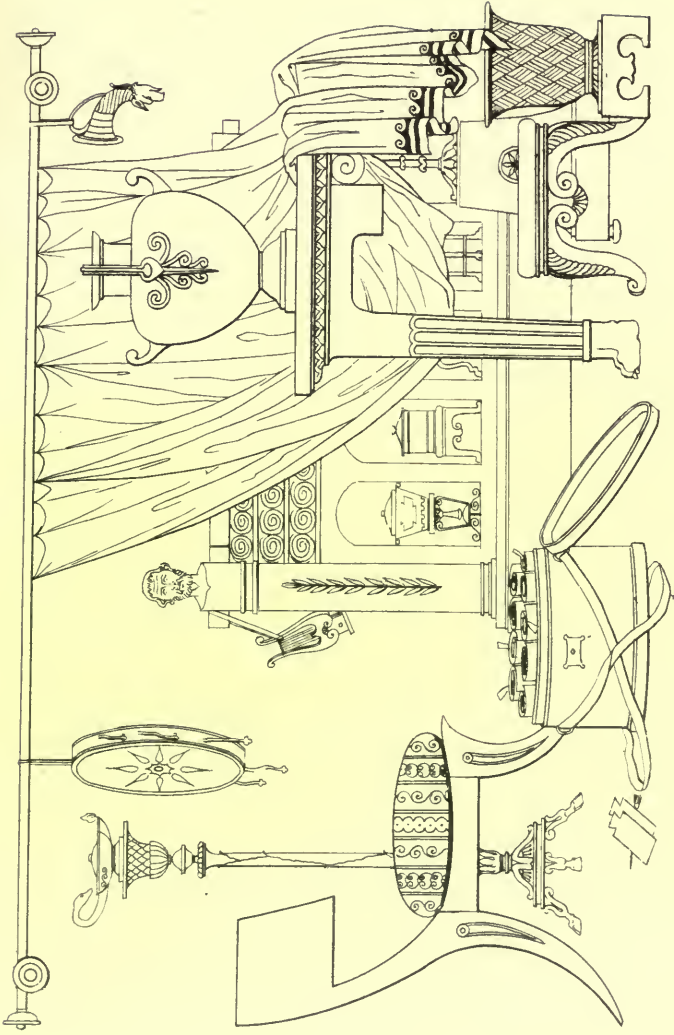
Naval column



Albani & Sarcophagus

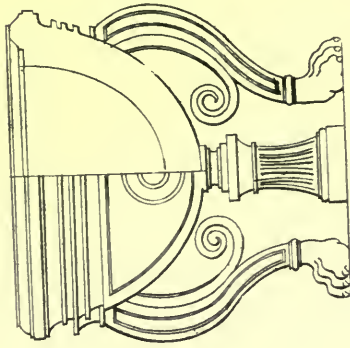
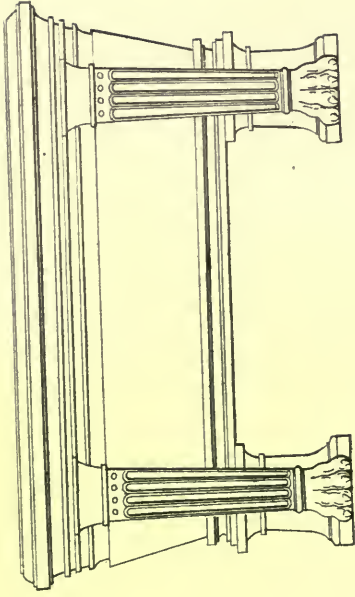


Chair & Pedestal



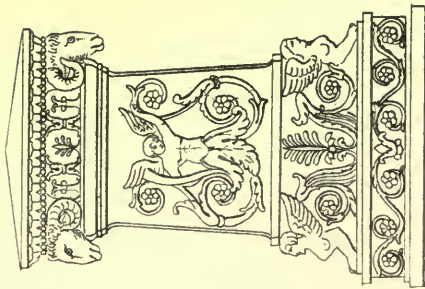
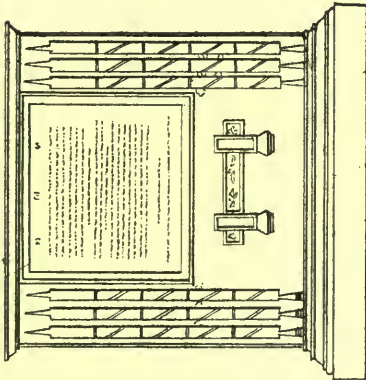
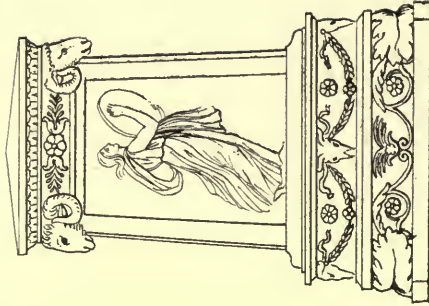
Barnam. Study

with scrolls, or volutes, labels for mixing, chair, table, lamp, &c.

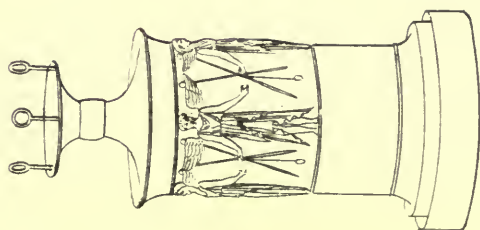


Lavacrum et bath.

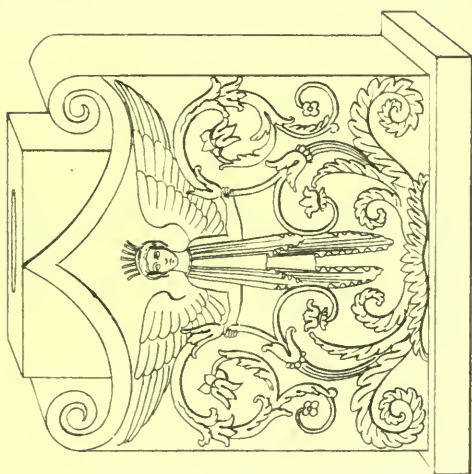




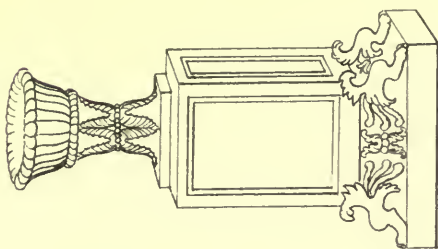
*Roman sarcophagus.
adorned with the fauces & albars*



Etruscan altar

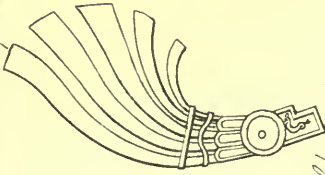


Etruscan altar

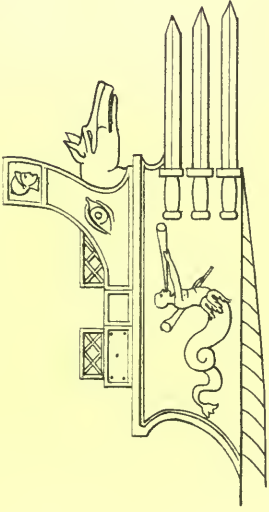


*Infersal
for libations of milk*

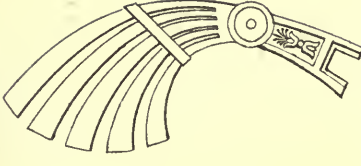
Aplustrum
or ornament of the poop



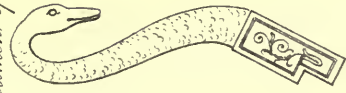
Proa of a Galley,
armed with the rostrum.



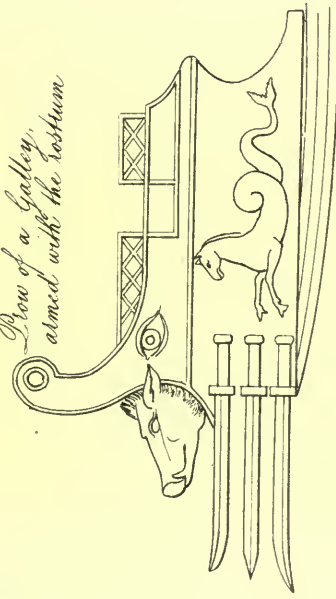
Aplustrum



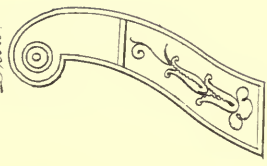
Cheniscus
or ornament of the prow



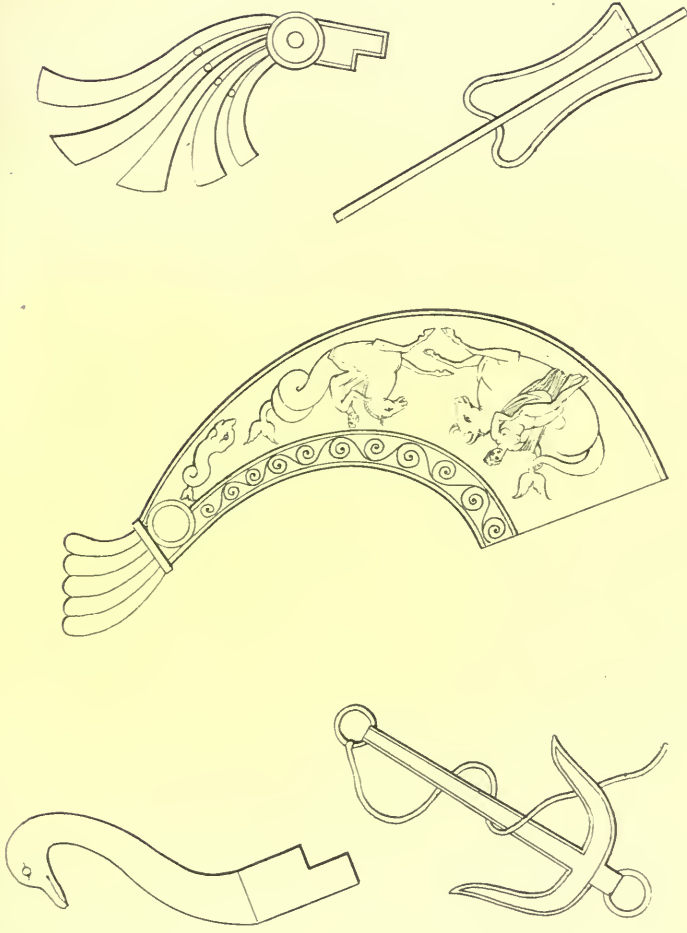
Proa of a Galley,
armed with the rostrum



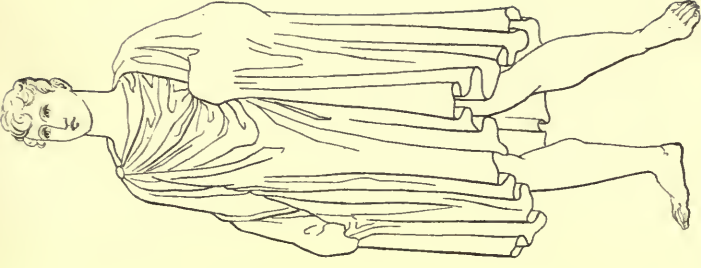
Proa



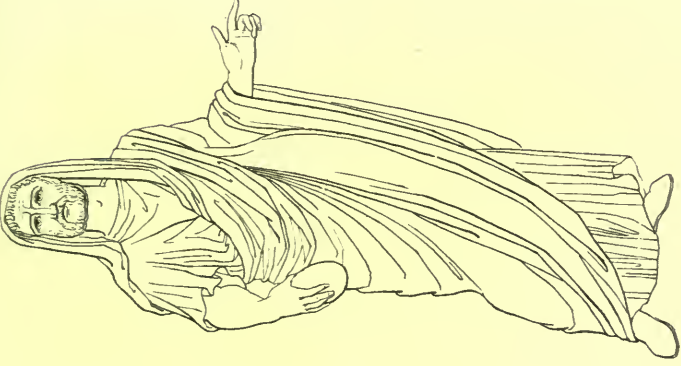
Poops & prows of Roman gallees.



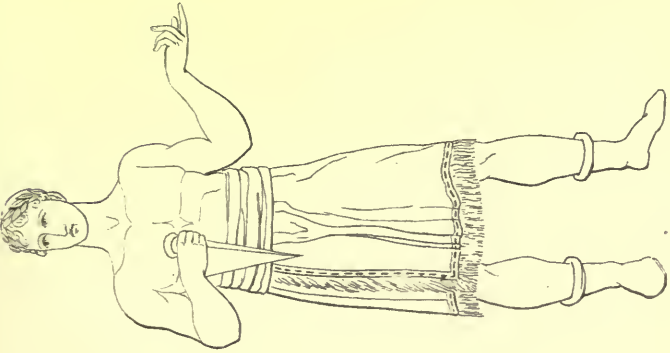
Loop piece, anchor & rudder of Roman galley



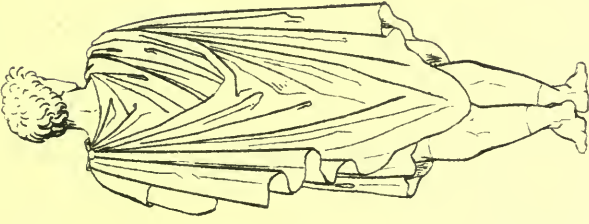
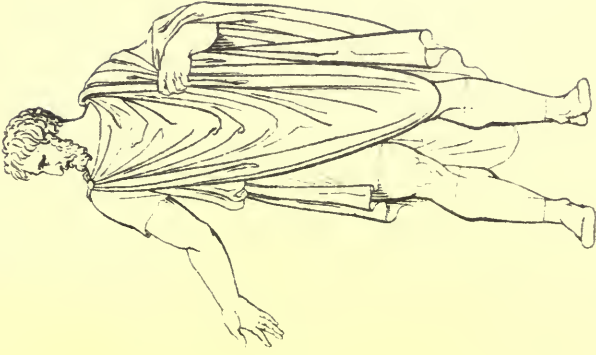
Familias



Priest



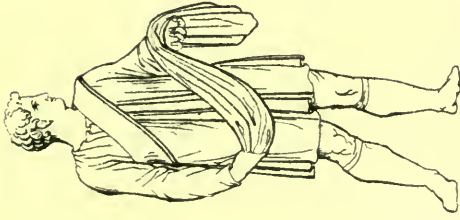
Sacrificator



Figures



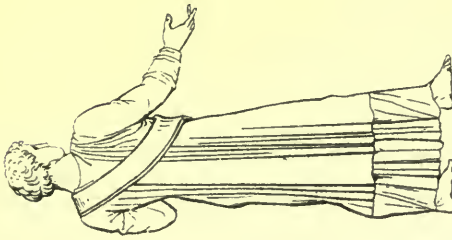
Senator



Knight

in the stables

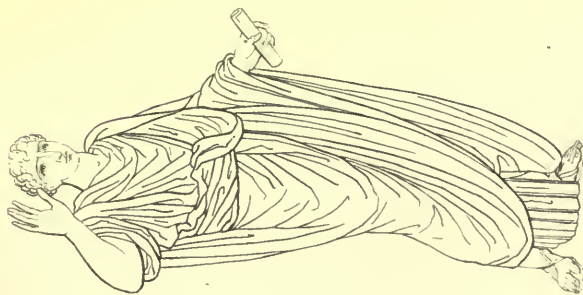
From the arch of Constantine

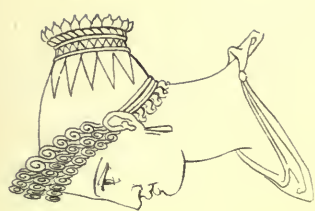


Senator

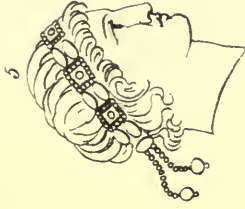
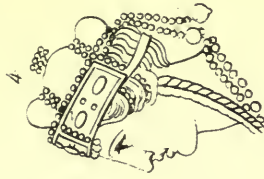
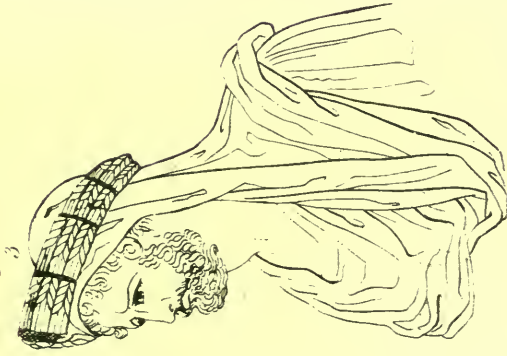


Roman dress

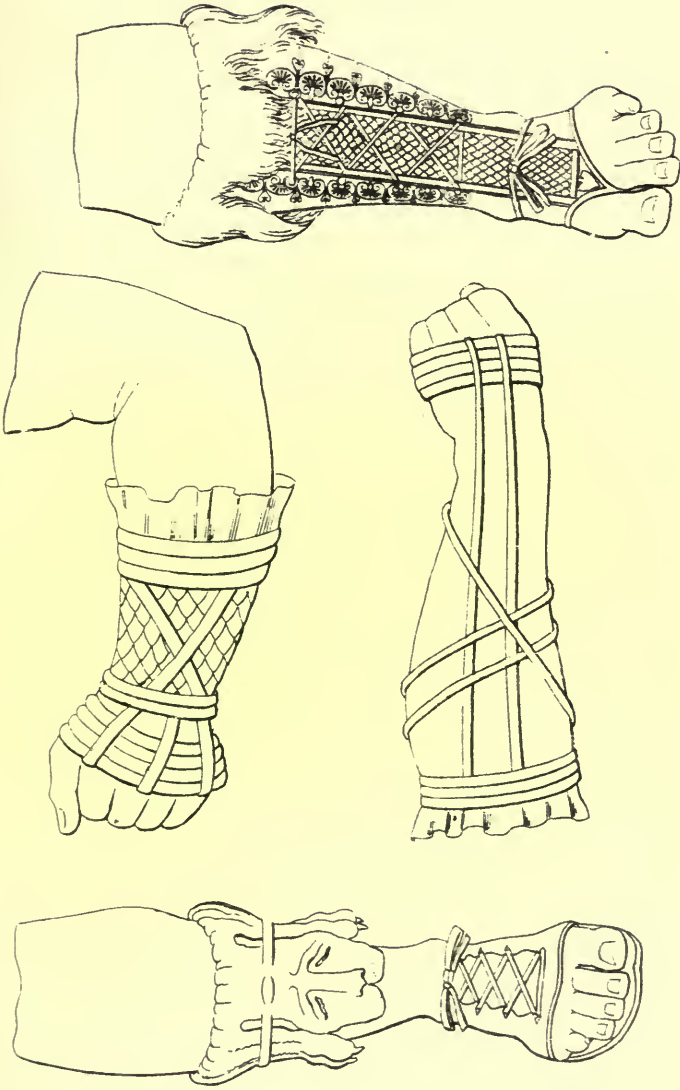




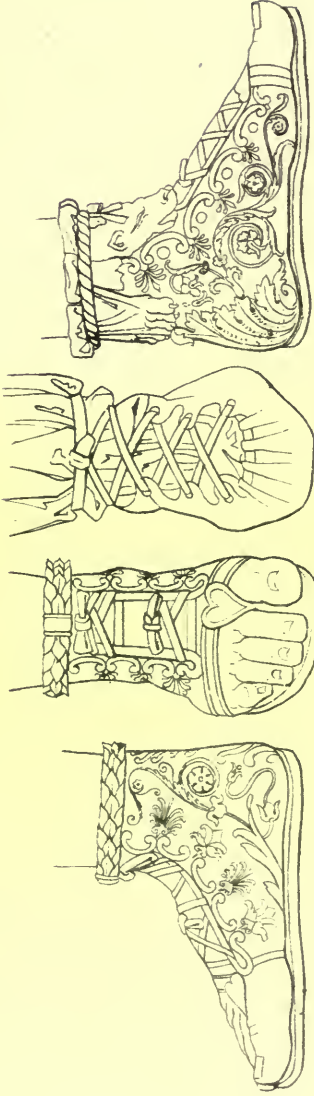
Roman empresses.



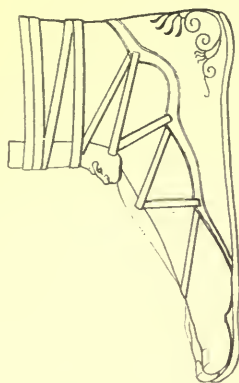
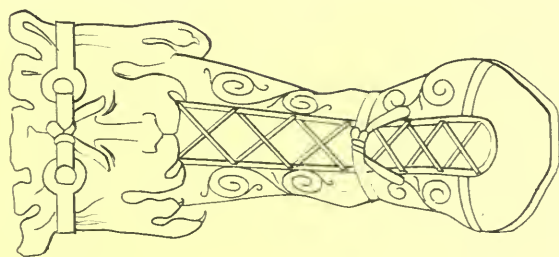
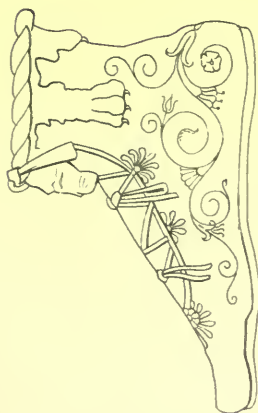
1 Flaminia 2 Empress crowned with laurel. 3 Emperor on the character of Peter abbas
4 Empress Helena 5 Emperor Constantine



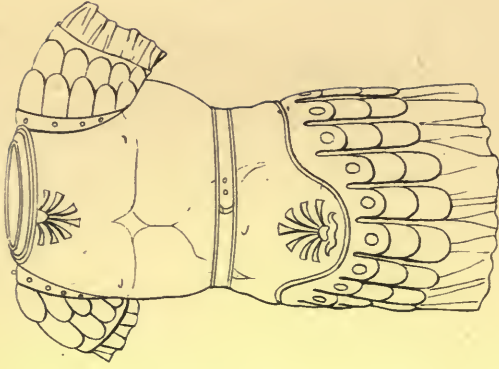
Gloves worn by the paratroopers & military bushmen



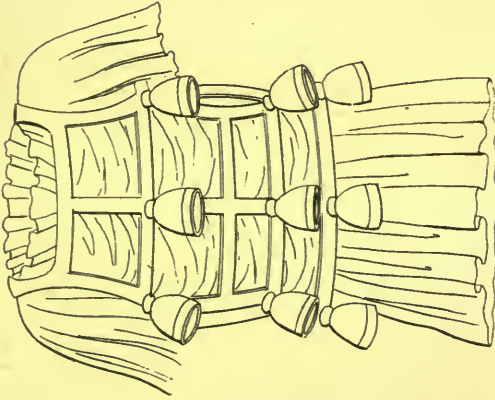
Different buckles & sandals



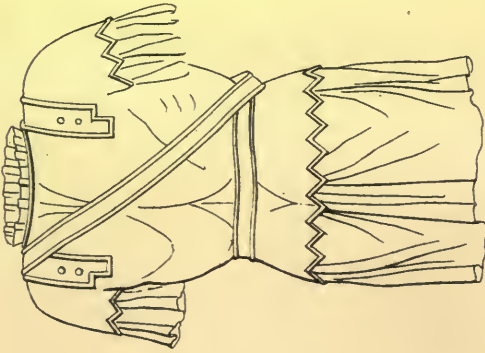
Roman buskins, & sandals



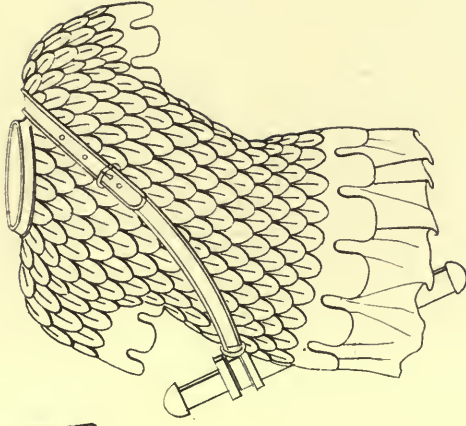
Roman cuirass



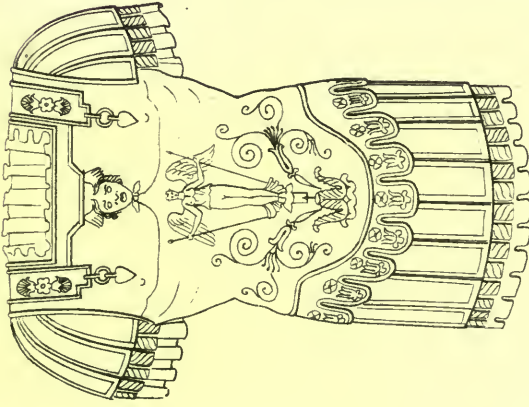
*Jackets
worn by the night watch of the Capitol.*



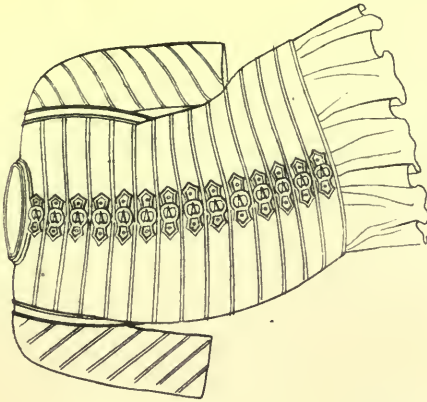
Roman cuirass



Roman cuclias

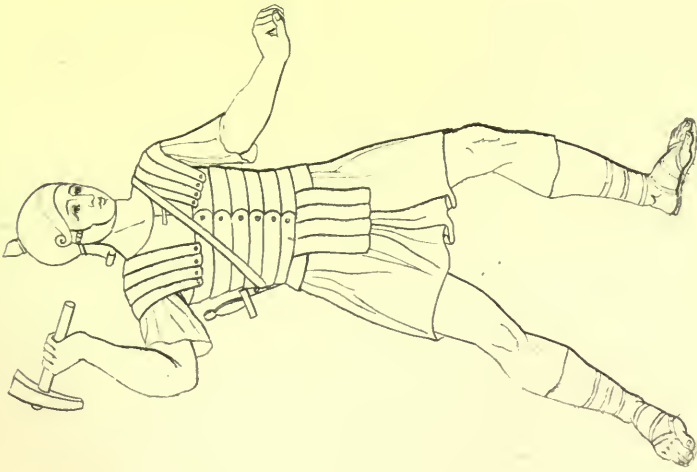
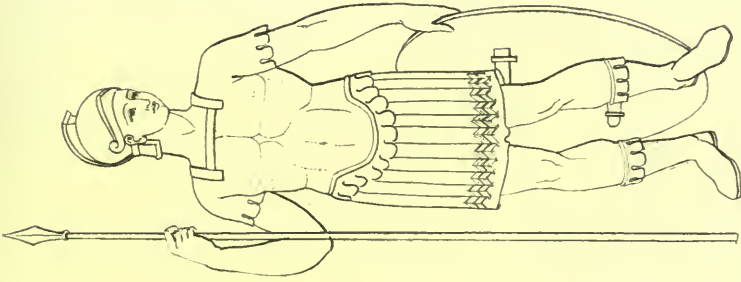
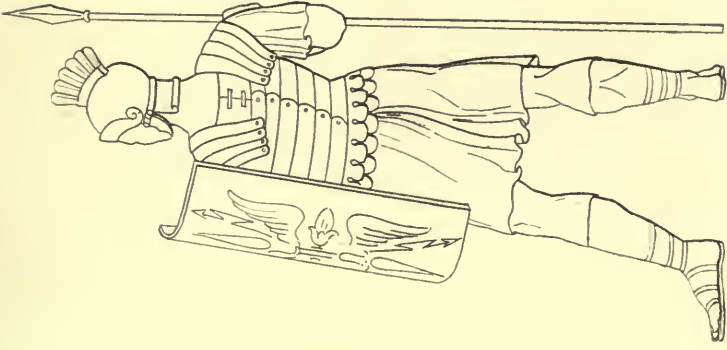


Impetral cuclias

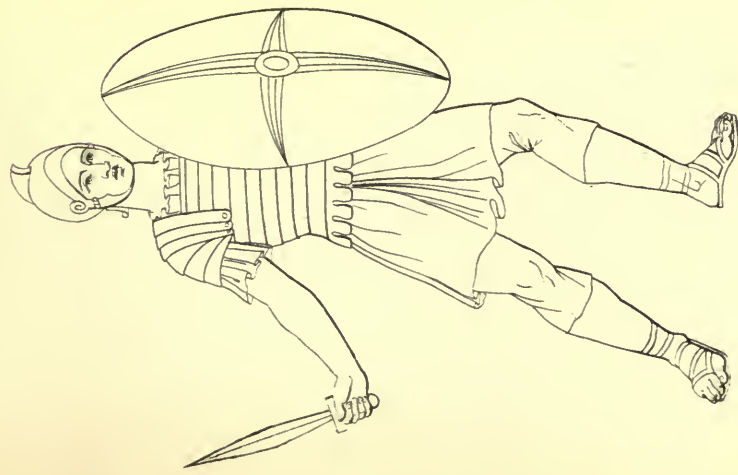
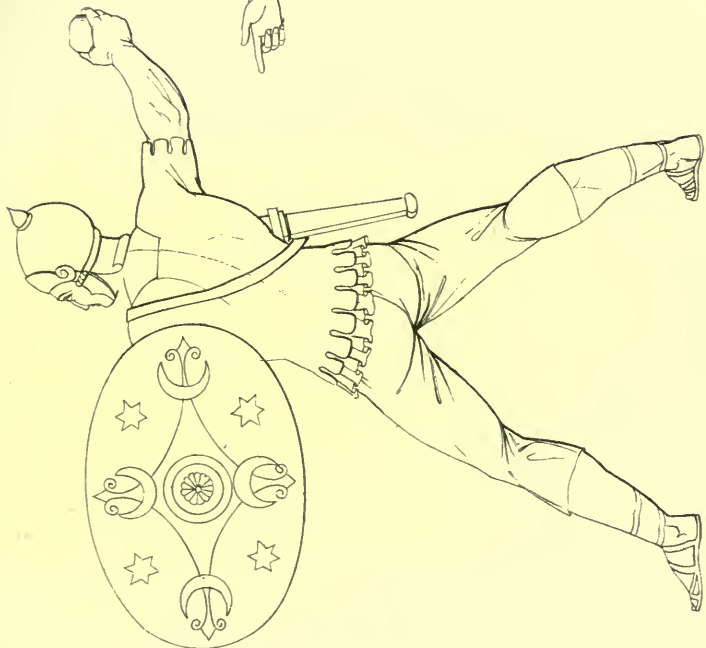
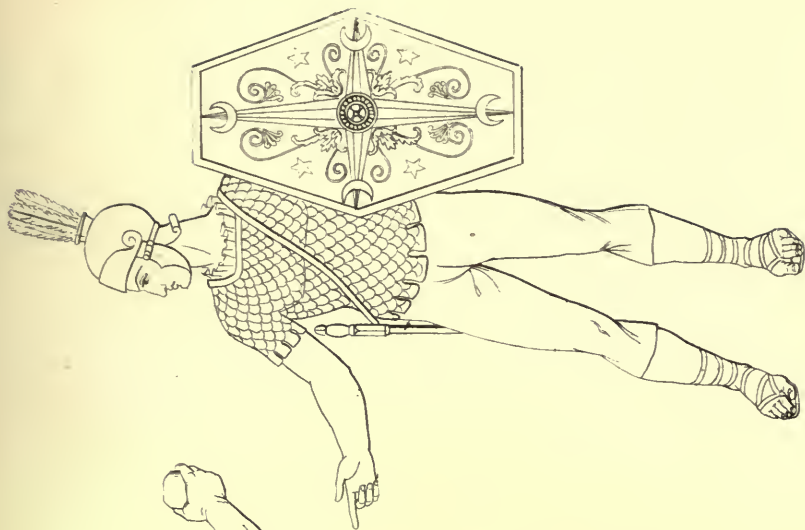


Dacian cuclias





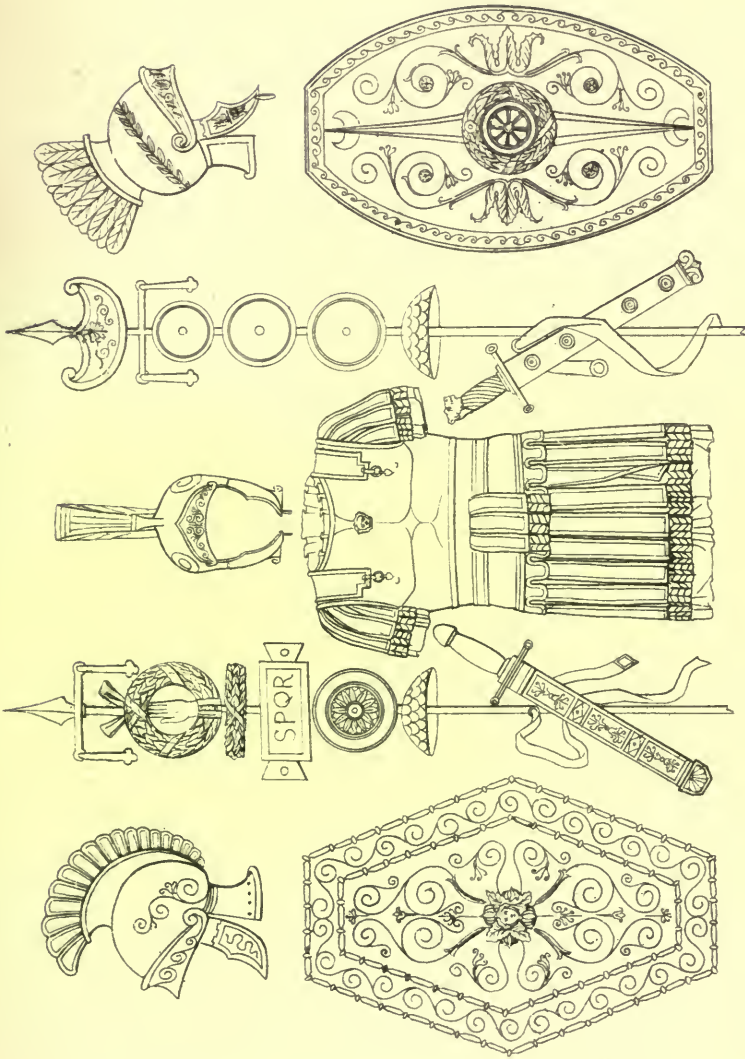
Roman soldiers.



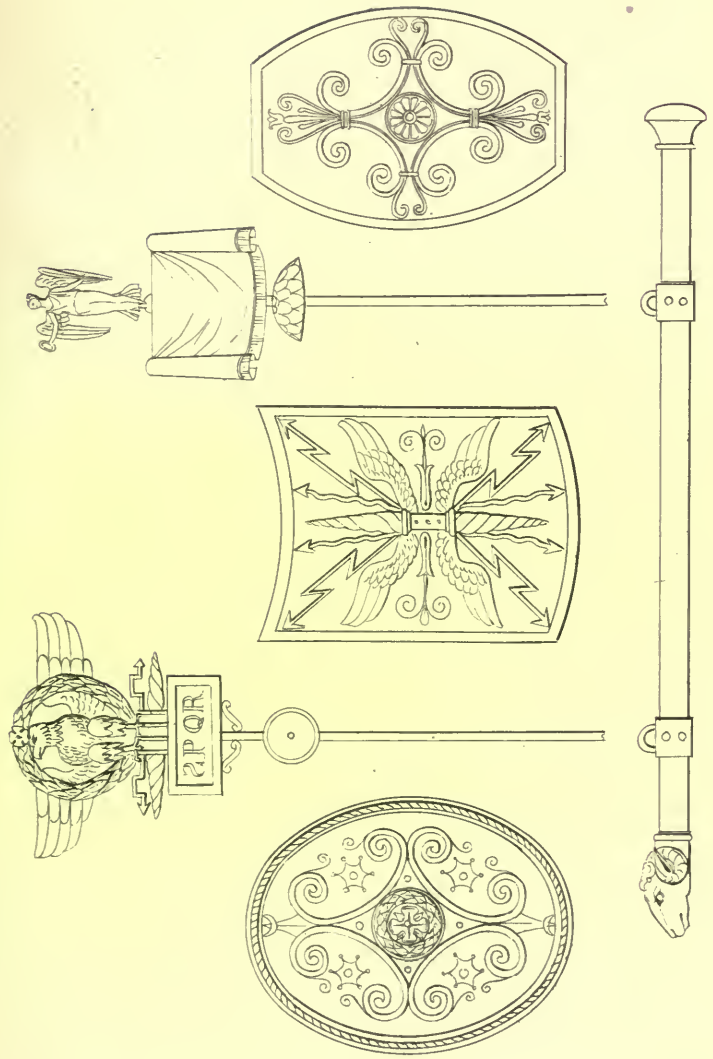
Roman soldiers



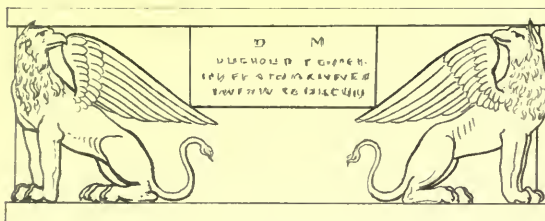
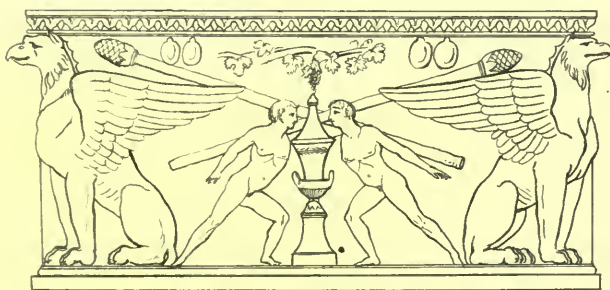
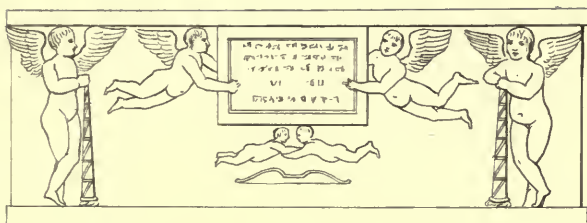
*Roman officer.
from the Trajan column.*



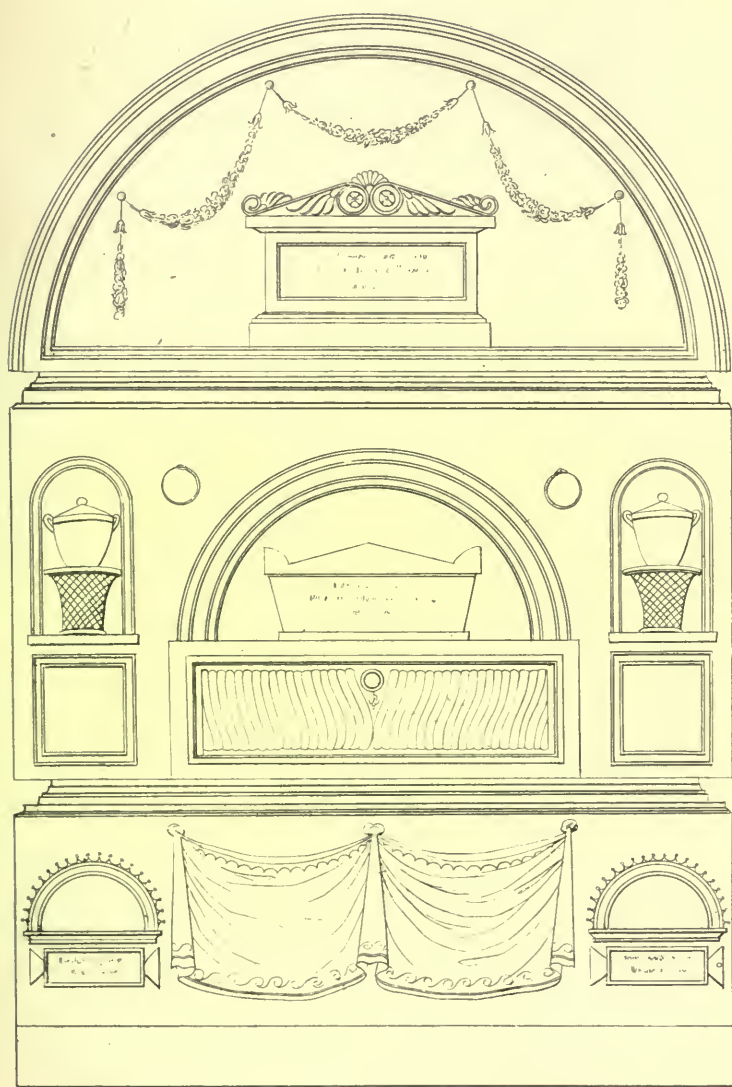
*Roman armor
and standards*



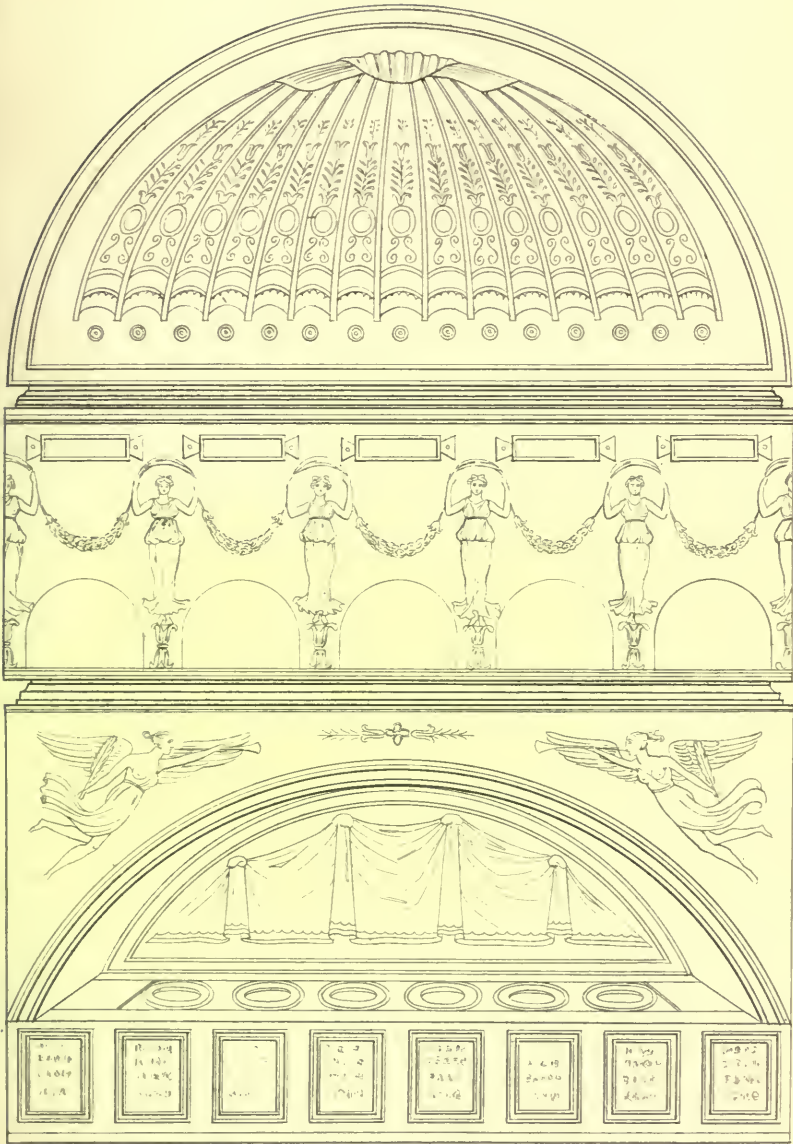
Roman standards, shields & battering ram



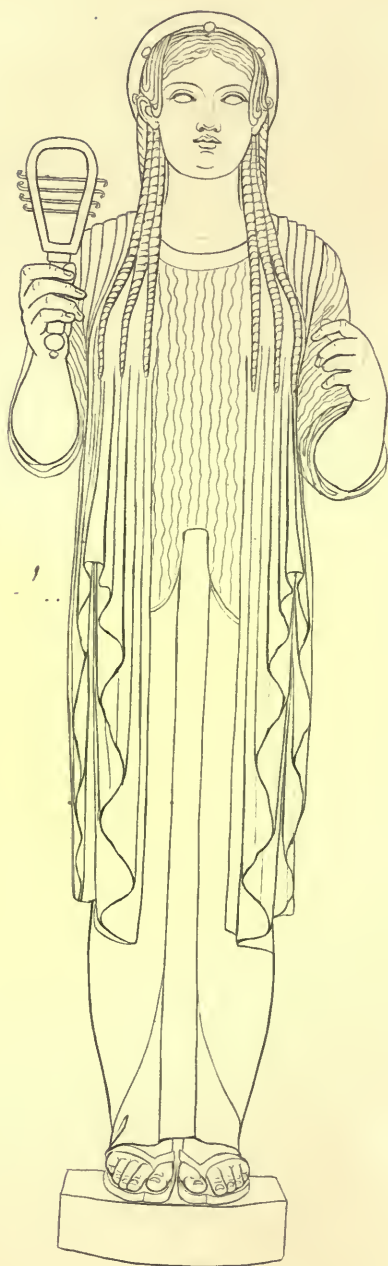
Sarcophage.



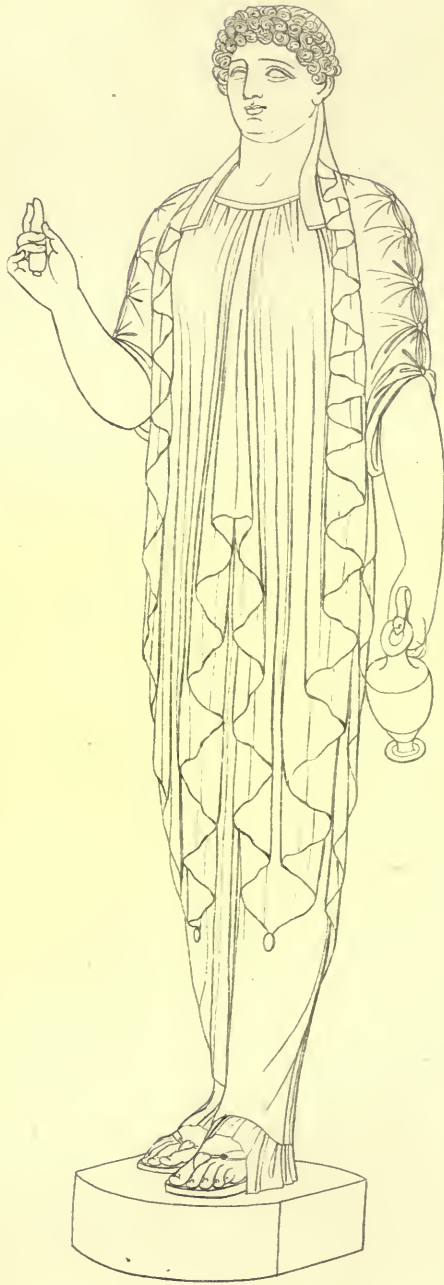
*Roman Columbaria
for the reception of cinerary urns.*



Roman columbaria

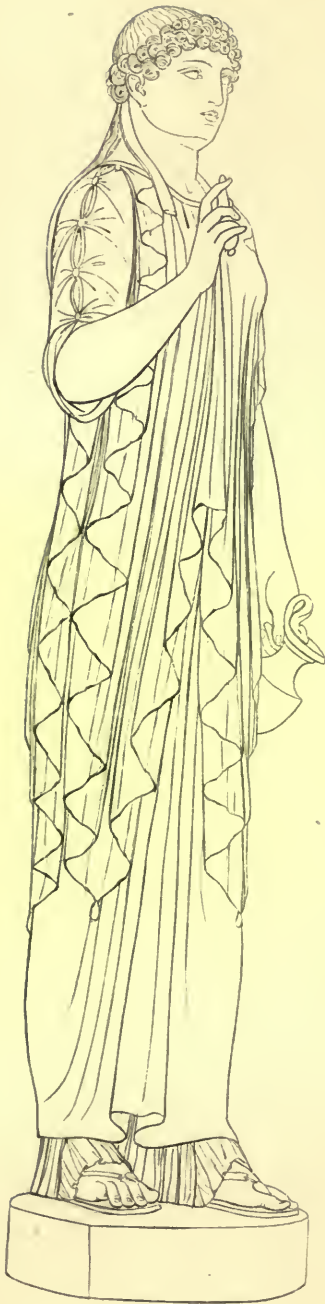


Isis, with her Sistrum.
ancient Greek.

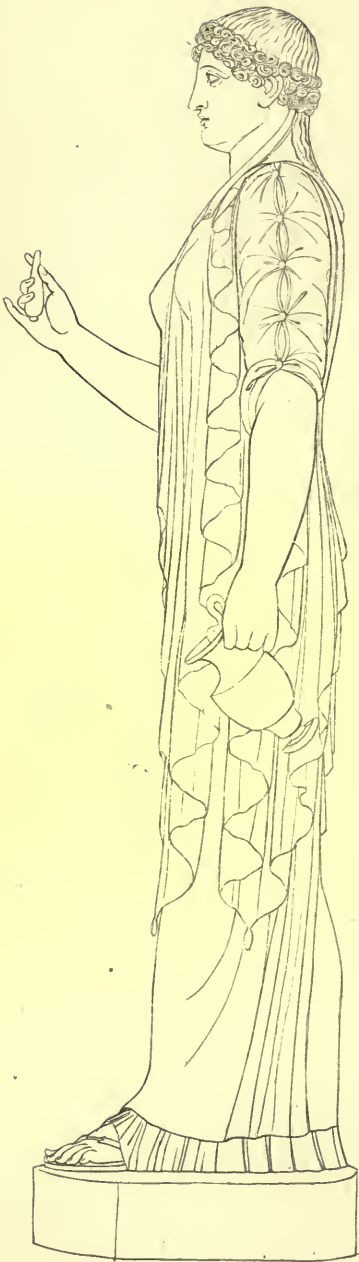


Grecian Priestess.





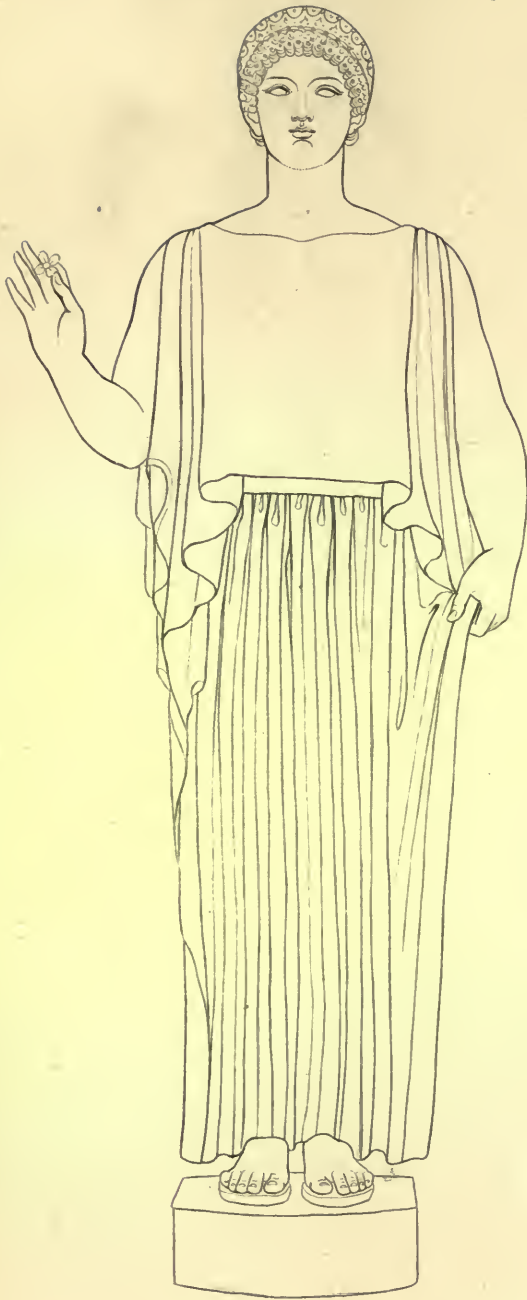
Grecian Priestess.
second figure.



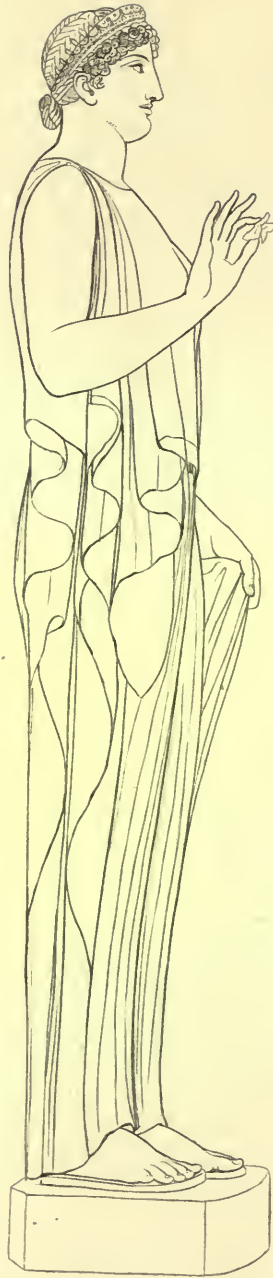
Grecian Priestess.
third figure.



Grecian Priestess.



Grecian Nymph.



Grecian Nymph.
second figure.



Hygieia



Silenus.

- seated.

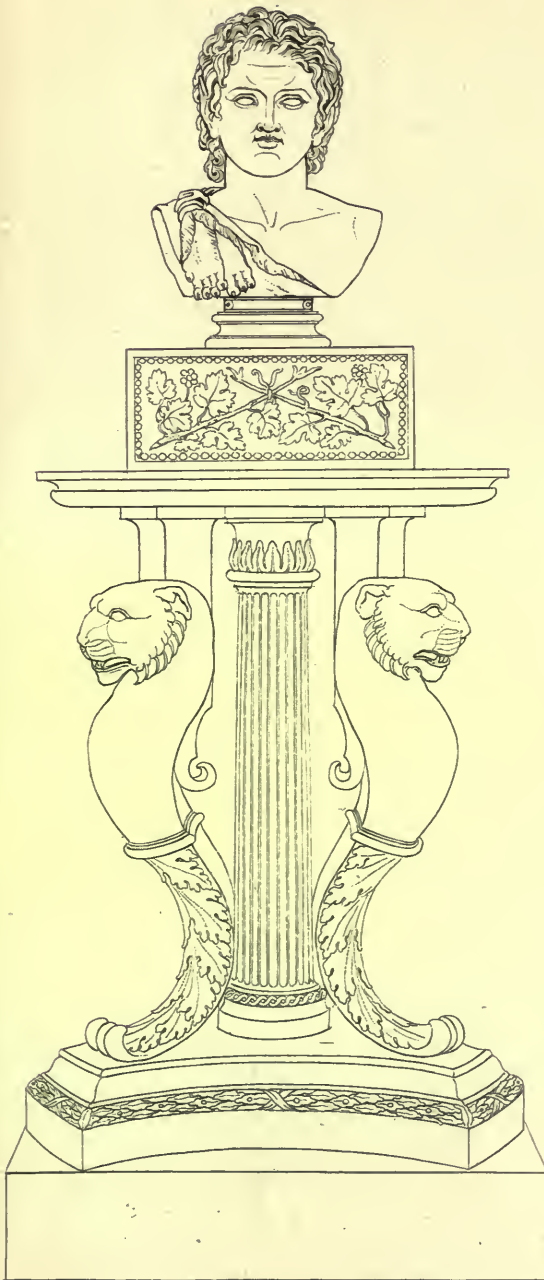


Silenus.
in the attitude of the Farnese Hercules.





Indion: Bacchus.



Tripod.

with Caracalla in the character of Hercules.





PLEASE DO NOT REMOVE
CARDS OR SLIPS FROM THIS POCKET

UNIVERSITY OF TORONTO LIBRARY
