

Morgan
1924
THIRTY
ORIGINAL SKETCHES
FOR
FANCY COSTUMES.



Specially Drawn, from our own suggestions, by R. L. BÖÖCKE.

B. BURNET & CO.,
+ ARTISTIC + AND + THEATRICAL + DRAPERS, +
42, KING STREET, COVENT GARDEN, LONDON.

B. BURNET & CO.,

ART DRAPERS,

Manufacturers and Importers

OF

SILK, WOOL, & COTTON FABRICS.

Unique in Colour, Texture, and Design.

DEPARTMENTS.

SPECIALITIES.

DRESS	}	"WIDE WIDTH"
		TEA GOWN DAMASKS, CLOTHS AND SERGES.
FURNISHING	}	CURTAINS AND PORTIÈRES.
		TABLE COVERS & BED SPREADS.
ECCLESIASTICAL	}	CHURCH HANGINGS.
		EMBROIDERY MATERIALS.
TRIMMING	}	FRINGES, CORDS, GIMPS.
		CURTAIN LOOPS, CUSHIONS.
THEATRICAL	}	FANCY COSTUME AND
		THEATRICAL FABRICS.

THIRTY
ORIGINAL SKETCHES
FOR
FANCY COSTUMES,

Specially Drawn, from our own suggestions, by R. L. BÖÖCKE.

NETT PRICE, 1/6; POST, 2d.



B. BURNET & CO.,
Artistic and Theatrical Drapers,
42, KING STREET, COVENT GARDEN,
LONDON, 1894.

Entered at Stationers' Hall.]

[All Rights Reserved.

→ NOTICE. ←

In reply to many requests from our clientele, we issue this Collection of Fancy Dress Sketches.

The majority of the Costumes suggested have originated with us during the last few seasons, and we also include a few well known subjects, which we have endeavoured to re-model and improve.

Should any of the accessories required not be in stock, they can be made or procured in two or three days.

Many of the Costumes can be carried out entirely in Cotton Fabrics, for Calico Balls; but the materials quoted are those which should be used, where no such restriction is made.

Those who do not wish to make up the materials themselves, can either hire or purchase costumes from the following firms:—

Costumiers.

C. ALIAS, 36, Soho Square, W.

MORRIS ANGEL & SON,
117, Shaftesbury Avenue, W.C.

*W. CLARKSON, 41, Wardour Street, W.

M. FISHER, 26, Bedford Street, W.C.

C. & W. MAY, 9, Garrick Street, W.C.

L. H. NATHAN, 17, Coventry Street, W.

*J. B. SIMMONS, 8, King Street, W.C.

*Also supply Wigs, Paints, and Powder.

—≡≡≡ INDEX. ≡≡≡—

PART I.

"ORIGINAL SUGGESTIONS."

	<i>Page</i>
AMAZON	4—5
CHRISTMAS CRACKER ..	6—7
FLAG	8—9
FORTUNE-TELLER ...	10—11
HARVEST	12—13
HERALDRY	14—15
MUSIC	16—17
NIGHT	18—19
QUEEN OF HEARTS ...	20—21
RAINEOW	22—23
SEA-SHELL	24—25
TIME	26—27
WATER-NYMPH	28—29
WITCH	30—31
WILLOW PLATE	32—33
—	
THEATRICAL PRICE LIST	34—39
SPECIALITIES IN DRESS } FABRICS }	40—41

PART II.

NATIONAL & HISTORICAL.

	<i>Page</i>
ANGLO-SAXON	42—43
CLEOPATRA	44—45
DUTCH PEASANT... ..	46—47
EMPIRE	48—49
ELIZABETHIAN	50—51
FISH WIFE	52—53
GRECIAN LADY	54—55
ITALIAN PEASANT ...	56—57
ILLYRIAN LADY	58—59
JAPANESE... ..	60—61
POMPADOUR	62—63
SPANISH DANCER ...	64—65
TURKISH GIRL	66—67
VIVANDIERE	68—69
WATTEAU	70—71
—	
UPHOLSTERY PRICE LIST	72—77
ECCLESIASTICAL PRICE } LIST }	78—79

B. BURNET & CO.,

AMAZON.

ROBE { 54-in. Leatherette, 2/11 per yd.
50-in. Cloth 3/11 per yd..
42-in. Cashmere 1/11½ & 2/6 per yd.

*Skirt Border can be printed in gold or colours
on material chosen in two days, at a cost of
1/6 per yard of border; or can be cut out of
gold cloth.*

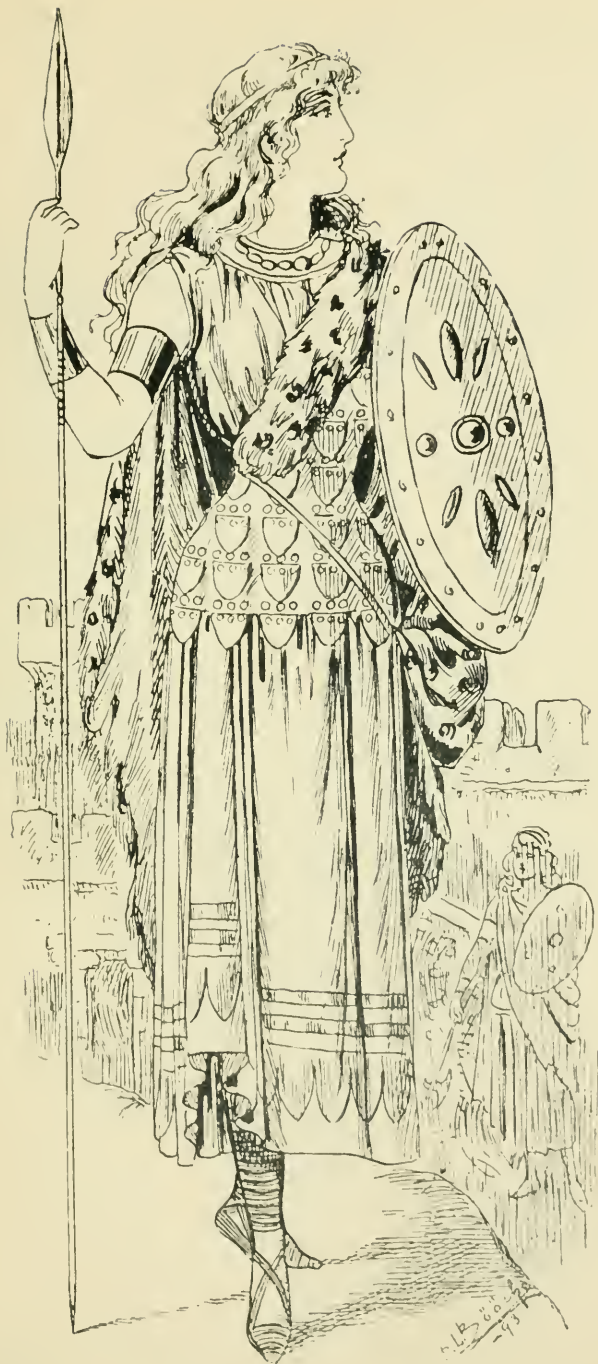
BODICE { 21-in. Armour Cloth, 3/11 per yd.
21-in. Metal Cloth, 1/11 & 2/11 ,,

CLOAK 50-in. Leopard Cloth, 4/6 per yd.

ACCESSORIES... { Spear, 10/6; Shield, 20/0
Brown Suede Buskins, 21/0
Armlets, 7/11 set.
Brass Head Cirelet, 1/11 & 3/11

REMARKS ... { Colouring should be light but decided;
cloak being lined with an effective
contrast.

42, King Street, Covent Garden, London.



CHRISTMAS CRACKER.

COSTUME ... { 21-in. Metal Tissue, $1/6\frac{1}{2}$ and $1/11\frac{1}{2}$
per yd.
21-in. Shot Silk, $2/11$ & $3/11$ per yd.

ACCESSORIES... { Coloured Ribbon, with a printed
pattern in gold, $10\frac{1}{2}$ d. per yd.
Cracker Wand, $6/11$
Large Jewelled Brooch, $2/11$
Gloves, Shoes and Stockings.

REMARKS ... { The dress should be made of two
colours in metal tissue, the points
cut and fringed—worn over a white
lace under-skirt.



B. BURNET & CO.,

FLAG.

DRESS &
HANGING
SLEEVES

21-in. Silk, 1/1, 2/6, 2/11 & 3/11 yd.
42-in. Cashmere, 1/11½ & 2/6 ,,
21-in. Satin, 1/11½ & 2/11 per yd.

DRAPERY &
SASH

21-in. Silks (combining Flag colour-
ings), 1/9 per yd.
21-in. Striped Satins, 2/11 per yd.

ACCESSORIES...

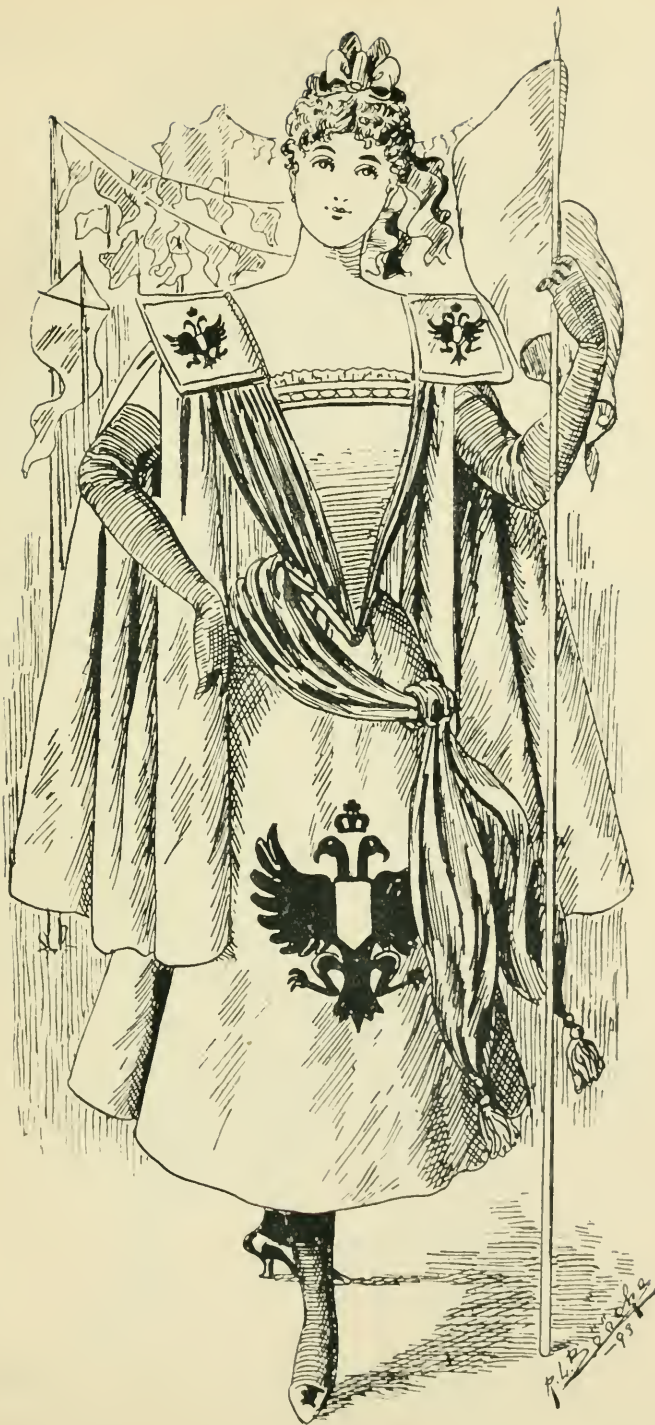
Appliqué Ornaments for Epaulets,
6/0 pair.
Silk Flag for Skirt, 9/6
Silk Banner, complete, 9/6
Ribbons to match for Hair.
Gloves, Shoes and Stockings to
correspond.

REMARKS ..

English, Scotch, Irish, Welsh, *Ger-
man, Italian, Russian and Austrian
Flag Costumes can be carried out
in this style.

* German Imperial Flag costs 5/0 extra in
both cases.

42, King Street, Covent Garden, London.



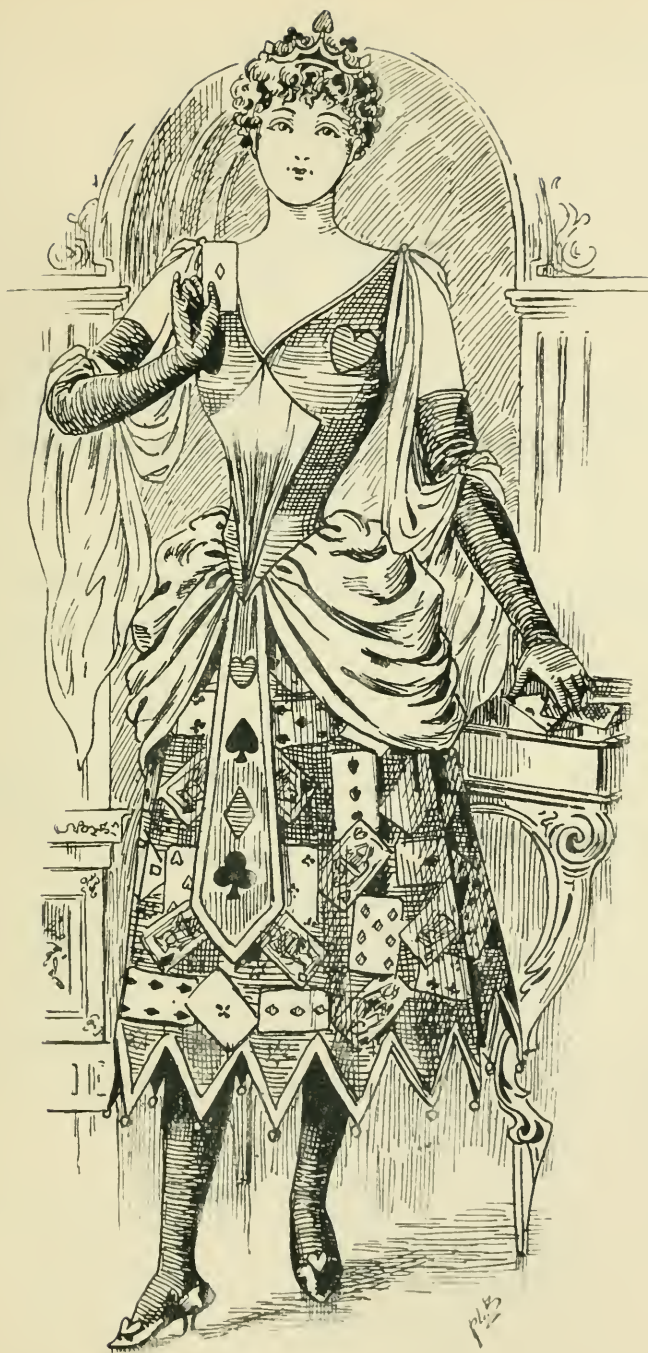
FORTUNE-TELLER.

SKIRT ... 31-in. Card Cotton, 8½d. per yd.

BODICE & { 19-in. Velvet, 3/11 & 4/11 per yd.
GIRDLE... { 25-in. Velveteen, 1/11½ & 3/6 per yd.

PANIER & { 21-in. Silk, 1/9 & 2/11 per yd.
SLEEVES... { 31-in. Koula Cotton, 6d. per yd.

ACCESSORIES... { Velvet Card Appliqués for Bodice and
Girdle 9d. each.
Card Tiara, 6/6
Gold Braids }
Gilt Folly Bells or Balls } *See pages*
Black or Red Gloves, Shoes and } 34—35
Stockings.



HARVEST.

SKIRT & DRAPERY { 21-in. Silk, 1/9 to 3/11 per yd.
42-in. Cashmere, 1/11½ & 2/6 per yd.
31-in. Sateen or Koula Cotton, 7d. per yd.

BODICE & SLEEVES { 48-in. India Muslin, 1/3 & 1/10 yd.
36-in. Nainsook, 7d. & 10½d. ,,

ACCESSORIES... { Straw Hat, 1/11
Artificial Cornflowers, Poppies,
Daisies, &c. ; 12-in. Trail, 1/11
Small Wheatsheaf, 3/3
Sickle, 3/6
Gloves, Shoes and Stockings.

REMARKS ... { Colouring of skirt, straw colour, with
gold and brown drapery ; full bodice
of white.

Gold wheat-ear design can be printed on either the skirt or drapery material in two days, at a cost of 1/- to 3/- per yard extra.

42, King Street, Covent Garden, London.



HERALDRY.

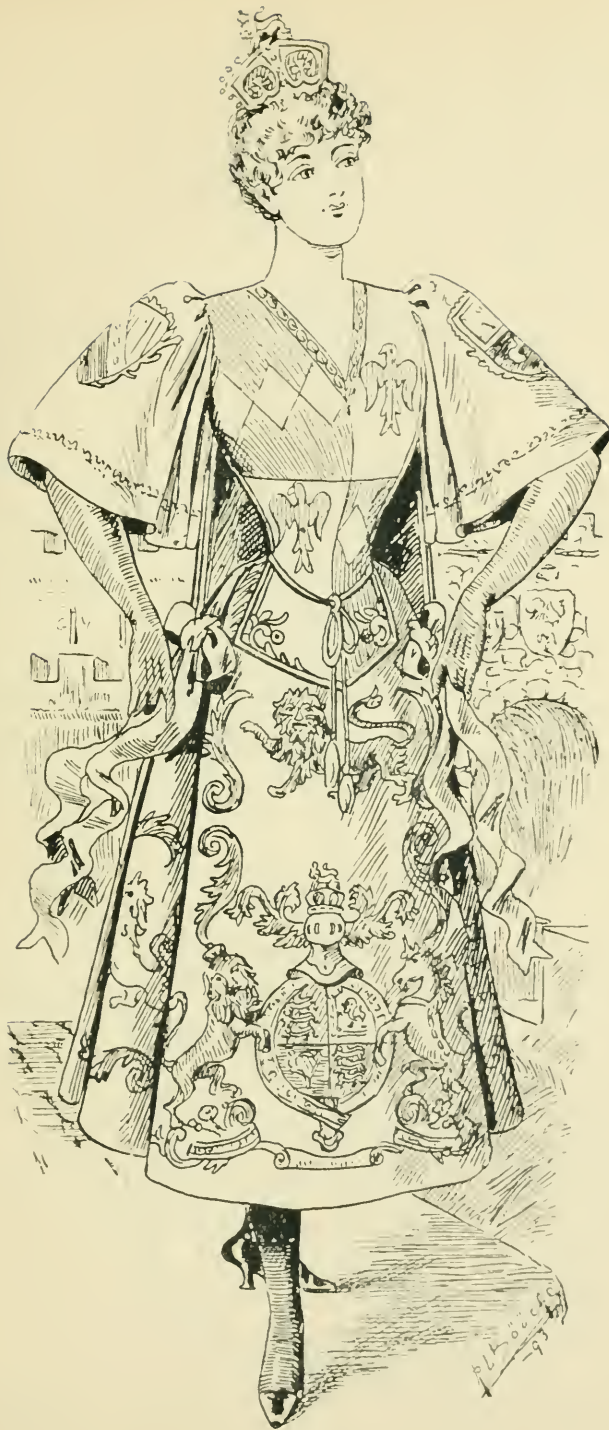
COSTUME ... { 21-in. Silk, 1/9, 2/6, 2/11 & 3/11 yd.
50-in. Satinette, 8/0 per yd.
50-in. Satin Sheeting, 6 6 per yd.

CLOAK & SLEEVES { 21-in. Gold Cloth, 5/6 per yd.
19-in. Velvet, 3/11 & 4/11 ,,
25-in. Velveteen, 1/11½ & 3/6 per yd.

ACCESSORIES... { 2-in. Ermine Trimming, 2 0 per yd.
6-in. Appliqué Scrolls. 1/6 & 2/0
15-in. Appliqué Coat-of-Arms, 20/0
to 40/0
Embroidered Ornaments. 2 6 to 5/0
Heraldic Coronet, 27 6

REMARKS ... { Any crest or coat-of-arms can be
embroidered to order in 5 or 6 days,
in tinsel or silk embroidery.

42, King Street, Covent Garden, London.



MUSIC.

ROBE	{	21-in. Silk, 1/9 to 3/11 per yd. 42-in. Cashmere, 1/11½ & 2/6 per yd. 24-in. Cotton Crêpe, 8½d. per yd.
------	-----	-----	---	---

Music border can be printed in gold or black in two days, on strips of the material chosen, at a cost of 1/- per yard extra, or if time permits, the robe when cut out can be returned for printing.

ACCESSORIES...	{	Gold Cirelet for Hair, 7/6 Gilt Lyre, 10/6 Digitated Hose. 6/6 pair (Cotton). Sandals, 16/6 pair.
----------------	---	--

REMARKS	...	{	The colouring of this costume should be white or any pale tint.
---------	-----	---	---

42, King Street, Covent Garden, London.



NIGHT.

OVER-DRESS
& ROBE { 21-in. Silk, 1/9, 2/6, 2/11 & 3/11 yd.
21-in. Satin, 1/11½ & 2/11 per yd.
31-in. Sateen, 7d. per yd.

*Star design printed in silver on material chosen
in two days, at a cost of 1/6 to 3/- per yard.*

CLOAK &
SLEEVE { 54-in. Tarletan, 2/2 per yd.
72-in. Tulle, 3/11 ,,
DRAPERY { 21-in. Silk, 2/11 ,,

*Above prices include cost of printing star and
crescent design.*

ACCESSORIES... { Silver Braid Edging. (See page 34.)
Silver Starred Ribbon, 10½d. per yd.
Crescent Moon, 2/11
Star Tiara, 3/11
Black Gloves, Shoes and Stockings.
21-in. Silver Cloth for Collar, 1/11½ yd.



QUEEN OF HEARTS.

SKIRT & BODICE { 21-in. Velvet, 3/11 & 4/11 per yd.
25-in. Velveteen, 1/11½ & 3/6 ,,

SLEEVES & OVER-SKIRT { 50-in. Satinette, 8/- per yd.
21-in. Satin or Silk, 1/11 to 3/11 per yd.
31-in. Sateen or Koula Cotton, 7d. per yd.

The card design can be printed in gold, silver, red or black in two days, at a cost of 1/- to 3/- per yard extra, according to width of material chosen.

ACCESSORIES... { Card Appliqués for Skirt and Bodice, 4/9 doz.
Card Coronet, 8/6
Card Wand, 8/6
Gloves, Shoes and Stockings.

REMARKS ... { Dark rich colour for skirt and bodice, white drapery.
Spade, Club, or Diamond designs can also be supplied at same cost.



RAINBOW.

SKIRT ... { 50-in. Rainbow Stripe, 3/11 per yd.
26-in. Rainbow Silk, 2/11 ,,

*The above can be made up plain, or accordion
pleated, at a cost of 16/6 extra.*

BODICE ... { 21-in. Satin, 1/11 & 2/11 yd.
25-in. Velveteen, 1/11½ & 3/6 yd.
18-in. Velvet, 3/11 & 4/11 yd.

UNDERSKIRT
& SLEEVES { 21-in. Silk, 1/9 per yd.
48-in. Indian Muslin, 1/3 & 1/10 yd.
36-in. Nainsook, 5d., 7d., 10½d.,
& 12½d. per yd.

ACCESSORIES... { Rainbow Silk, on wire shape, for
head dress. Fan to match.



SEA-SHELL.

SKIRT & DRAPERY { 21-in. Silk, 1/9 to 3/11 per yd.
24-in. Cotton Crepe, 8½d. ,,
42-in. Crepon. 1/6½ & 1/11½ per yd.

The shell design can be printed in gold, silver or colours in two days, at a cost of 1/- to 3/- per yard extra, according to width of material chosen.

BODICE ... { 21-in. Shot Silk, 3/11 per yd.
22-in. Tinsel Gauze, 1/1½ per yd.
20-in. Metal Cloth, 1/11½ ,,

ACCESSORIES... { Shell Head-dress, 10/6
Sprays of Seaweed for shoulders, 6/6 pair.
Gloves, Shoes and Stockings.

REMARKS ... { This costume should be carried out in green, or green and brown.

42, King Street, Covent Garden, London.

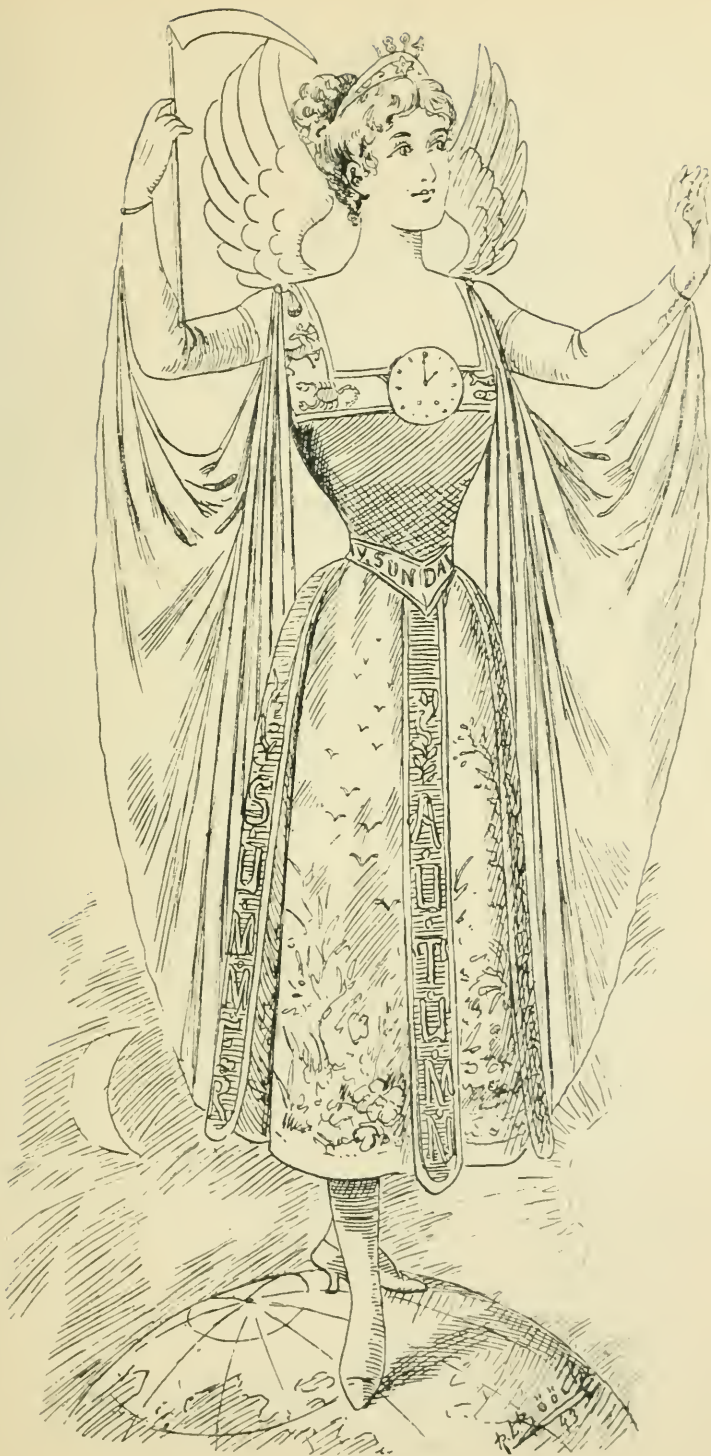


B. BURNET & CO.,

TIME.

SKIRT PANELS	{	21-in. Satin, 1/11½ & 2/11 per yd. 21-in. Silk, 1/9. 2/6, 2/11 & 3/11 yd.
BODICE & SKIRT BANDS	{	19-in. Velvet, 3/11 & 4/11 per yd. 25-in. Velveteen, 1/11½ & 3/6 ..
SLEEVE DRAPERY	{	48-in. Silk Gauze, 1/10 per yd. 72-in. Tulle, 1/11½ per yd.
ACCESSORIES...	{	Silk or Gold Appliqué Letters for Skirt-Band, 1/0 each. 4 Sprays of Artificial Flowers for Skirt Panel (about 18-ins. long), 15/6 set. Signs of Zodiac for Bodice, 12/ set. White Gauze Wings, 15/0 Coronet with Gilt Figures, 8/6 Seythe, 7/6 Watch Dial Brooch, 6/11 Printed Waist Ribbon, 2½ yds. long, 4/6
REMARKS ...	{	Skirt should be of four coloured panels, green, pink, yellow and white, and could be hand painted. Dark brown for Bodice and Skirt Bands.

42, King Street, Covent Garden, London.



WATER-NYMPH.

DRAPERY	...	{	22-in. Satin, $1/11\frac{1}{2}$ & $2/11$ per yd.
		{	21-in. Silk, $1/9$ & $2/11$ per yd.
		{	42-in. Cashmere, $1/11\frac{1}{2}$ & $2/6$ per yd.
		{	31-in. Sateen or Koula Cotton, 6d. & 7d. per yd.
ROBE	...	{	25-in. Tinsel Gauze, 7d. & $1/1\frac{1}{2}$ yd.
		{	20-in. Metal Tissue, $1/6\frac{1}{2}$ per yd.
		{	54-in. Tarletan, $2/2$ per yd. (Printed in silver, water design.)
ACCESSORIES...		{	Water Lily Head-dress, $3/11$
		{	9-in. Weed and Shell Fringe, $7/6$ yd.
		{	Bulrush Wand, $3/11$
		{	Gloves, Shoes and Stockings.
REMARKS	...	{	This dress should be carried out in pale green and silver.



WITCH.

SKIRT ... { 21-in. Silk, 1/9, 2/6, 2/11 & 3/11 yd.
42-in. Cashmere, 1/6½, 1/11½ & 2/6 ,,
31-in. Sateen, 7d. per yd.

Border design can be printed in gold or silver on skirt material in two days, at a cost of 1/6 per yard of border.

CORSAGE ... { 19-in. Velvet, 3/11, 4/11 per yd.
25-in. Velveteen, 1/11½, 3/6 ,,

DRAPERY,
BODICE &
SLEEVES } Lighter shade of same material as skirt, or bright contrasting colour.

ACCESSORIES... { Snake Waist Belt, 27/6
Snake Wand, 6/6
Sateen or Velvet Hat, 10/6
Bat Shape, covered in gold or silver metal Gauze, 3/3
Natural Stuffed Bat, 7/6

REMARKS ... { Colouring may be black, scarlet or white, or else in soft shades of brown or grey.



WILLOW PLATE.

COSTUME ... {
21-in. Satin or Silk, 1/11½ to 3/11
per yd.
50-in. Satinette, 6/11 & 8/- per yd.
30-in. Chinese Silk, 2/11 per yd.
31-in. Sateen or Koula Cotton, 7d.
per yd.

The Willow Plate design can be printed in blue or gold in two days, at a cost of 1/- to 3/- per yard extra, according to width of material chosen.

ACCESSORIES... {
Ribbon Velvet or Gold Braid to
match printing.
Gloves, Shoes and Stockings.

REMARKS ... {
The material of this dress should be
white or very pale blue.



B. Burnet & Co.

THEATRICAL PRICE LIST.

PATTERNS ON APPLICATION.

To ensure a suitable assortment quote color, material, or requirements.

GOLD AND SILVER TRIMMINGS.

	WIDTH. →	Twine Size.							Per
		¼ in.	⅜ in.	½ in.	¾ in.	1 in.	1½ in.	2 in.	
Gauze Lace	3d.	—	5d.	—	9d.	—	1/6	Dozen.
Prussian ,,	—	—	1/0	—	1/8	—	—	,,
French Braid	1½d.	2d.	2½d.	4½d.	5½d.	—	—	Yard.
Fancy Gimp	2d.	—	2½d.	—	6d.	10½d.	—	,,
Oris Lace	—	3d.	3½d.	4¾d.	6½d.	10½d.	1/2	,,

Cable & Basket Cords	Twine Size.			Medium.		Rope.		Yd.
	2½d.	3½d.	4½d.	5½d.	6½d.	7½d.	8½d.	

	WIDTH. →	Twine Size.							
		1 in.	1½ in.	2 in.	2½ in.	3 in.	4 in.	6 in.	
Gold Bullion Tassels		2/4	2/10	3/3	3/8	5/3	7/6	16/6	Dozen.
Silver ,, ,,		2/2	2/4	2/10	3/3	3/11	7/6	12/6	,,
(Any Size or Style to Order)									
Alphabetical Letters		3/11	5/6	7/0	8/9	10/9	14/0	21/0	,,
Shell Lace	4¾d.	5¾d.	6¾d.	—	8½d.	11½d.	2/11	Yard.
Point d'Espagne	1/4½	1/11½	2/6	3/3	3/11	—	—	,,
Epaulet Fringe	—	—	—	—	5/6	—	—	,,
Gold Bullion Fringe		11½d.	1/3½	1/8	2/1	2/6	3/3	4/9	,,
Silver ,, ,,		10d.	1/2	1/3	1/11	2/4	2/11	4/6	,,
Twisted Thread ,,		4½d.	—	7¾d.	—	9½d.	11½d.	—	,,

Gold and Silver	} {	2 in.	3 in.	6 in.	} 2/9 (6 rows) Yard.
Spangled Fringe		10d. (1 row)	1/1½ (1 row)	1/6½ (3 rows)	
		11½d. (2 rows)	1/6½ (3 rows)		

42, KING STREET, COVENT GARDEN,
LONDON.

Telegrams—"COVENT, LONDON."

ORNAMENTS & ACCESSORIES.

Armlets....	(Double clasps connected by chain) 7/11 per pair.					
Bells	Folly Bells from 4d. per doz., Open Bells from 6½d. per doz.					
Buttons	Gold and Silver Buttons, various sizes, from 4½d. per doz.					
Balls (spangled)	{	Diameter	¾	1	1¼ ins.	} with Loop for attaching.	
			Price	1/11	2/3	2/11 doz.		
Crescents (spangled)		{	Length	2	2½	3 ins.	} Larger sizes to order.	
			Price	4/9	6/9	9/6 doz.		
Clasps	1/1½, 2/0 & 2/11; Jewelled Clasps, 7/6 pair.					
Crooks	For Shepherdess Costume; gold, silver or white, with metal head, 3/11 each; special shades, 1/0 extra.					
Epaulets	Bullion Fringe, 3 inches deep, 8/11, 11/6 pair.					
Fillets	1/11, 2/11 & 3/11; one, two or three bands.					
Jewels	Various sizes and colours, mounted and pierced for sewing, 1/-, 1/4½, 2/11 & 5/6 per doz.					
Pearls	{					
							All sizes, 1/6 per bunch.	
			Best quality, 2/11, 3/11, & 5/11 per bunch.					
Stars (spangled)	{	Diameter	1	1½	2	3 ins.	} Larger sizes to order.
			Price	1/6	1/11½	2/9	6/- doz.	
Sequin Coins	Size of sixpence or shilling, 1/6½ per gross.					
„ Necklaces	Fancy patterns, 1/11½ each.					
„ Chain	Vandyke design, 2/6 per yard.					
Spangles	Gold and Silver, 6d. oz.; Red, Blue, Green or Violet, 1/6 oz.					
Wands	Covered with foil paper and star ornament, 3/11 each.					
Wings	Wire frames, covered with tinsel gauze, 3/11 pair.					

Crowns, Swords, Jewelled Girdles, Etc.

SILK, WOOL,

WIDTH.	MATERIALS.	PRICE.	PER
22 in.	Satins in 300 shades	1/11½ 2/6 2/11 3/11	Yard
21 in.	Silks (plain and fancy)	1/6 1/9 2/6 2/11 3/11	
27 in.	Rainbow Silk	2/11	"
24 in.	Plushees, all colours	3/6 4/11 5/11 6/11	"
18 in.	Silk Velvets, ,, ,,	2/11 3/6 3/11 4/11	"
25 in.	Velveteens, ,, ,,	1/11½ 2/6 3/6	"
40 in.	French Merinoes ,,	1/6 1/11½ 2/6	"
54 in.	Yorkshire Serges (70 shades) ...	1/11	"
32 in.	All Wool ,,	1/6½	"
72 in.	All Wool Cloths	6/0 8/6 10/6	"
50 in.	,, ,, ,,	3/11 4/3	"
63 in.	Twilled Cotton Sheetings, all colours	1/11	"
50 in.	Animal Hair	1/11½ 2/11 3/6 4/6 6/6	"
21 in.	Pompadour Satins	2/11 3/6 3/11	"
21 in.	Striped Satins	2/11	"
36 in.	,, Merinoes	1/11½	"
31 in.	,, Cottons	8½d.	"
40 in.	,, Algerian Cloakings (Cotton)	1/2½ 1/4½ 1/6½ 1/11	"
50 in.	,, ,, ,, (Silk)	2/11 3/11 4/11	"
31 in.	Plain Satteens, all colours	5d. 7d.	"
31 in.	Koula Cottons	6d.	"
31 in.	Fancy Satteens	1/0½ 1/2½	"
27 in.	Glazed Calicoes	4¾d.	"
45 in.	Berlin Webbing	3/11	"
27 in.	Tammies (for Mediums)	1/8	"
72 in.	Linen (for Transparencies)	1/4½	"
108 in.	,, ,, ,, ,,	2/8	"
72 in.	Scene Canvas (per piece of 60 yds.)	11½d. 1/0½	"
36 in.	Profile ,,	2¾d. 3¾d	"
72 in.	,, ,,	5¾d. 7½d	"

COTTON GOODS.

WIDTH.	MATERIALS.	PRICE.	PER		
3 yds.	Tableau Gauze, White, Sky Blue, Grey or Black	1/2½	Yard		
			5 "	1/8	"
			5½ "		"
60 in.	White Tarlatans, (per piece of 16 yds.)	4/9 5/11 7/11 10/6	Piece		
60 "	Coloured " " "	6/11	"		
60 "	" " (special shades)	8/11 10/6	"		
40 "	Iseno's Black & White (per pc. 12 yds.)	1/11½	"		
40 "	" Pink, Sky, Cardinal, Yellow	2/11	"		
40 "	Book Muslins " " "	3/11 4/6 6/6 7/11 8/6 10/6	"		
22 "	Tinsel Gauze	7d. 1/1½	Yard		
20 "	Armour Cloth....	3/11	"		
20 "	Gold and Silver Cloth	1/11½ 2/4	"		
20 "	" " " Metal Tissue	1/6½ 1/11½ 2/3	"		
52 "	Gold Printed Satens	1/11½	"		

Any Color Dyed to Order or Fireproofed in Four Days.

	1-in.	2-in.	3-in.
Swans' Down Trimming ..	10½d.	1/8	2/6 yard.
Ermine Trimming	1/0	2/0	3/0 "

Ribbons, Laces, Haberdashery.

BLOCK PRINTING

IN

GOLD, SILVER AND COLORS.

A large selection of designs (in addition to those referred to in our Sketches), such as Stars, Crescents, Spots, Stripes, Arabesque and Floral Patterns, Oriental and Classical Borderings and Fillings, etc., can be **PRINTED IN 2 DAYS ON ANY OF OUR MATERIALS.**

Approximate Cost per yard of Printing:--

Borders not exceeding 3 ins.	10	Material not exceeding 42 ins.	20
" " " 12 "	16	" " " 54 "	26
Material " " 31 "	16	" " " 60 "	30

THEATRICAL TIGHTS AND BODIES.

	Ladies.'		Gents.'			Children's.
	Small	Medium	Small	Medium	Large	
Cotton (Fine Make).						
White Tights	4/11	4/11	5/6	5/6		
„ Bodies	4/6	4/9	4/9	4/11		To Order.
☞ * Colored Tights	4/9	4/11	4/11	5/6		
„ Bodies	4/9	4/11	4/11	5/6		
Worsted.						
Colored Tights	8/0	8/0	8/6	8/6	8/6	To Order.
„ Bodies	8/0	8/0	8/6	8/6	8/6	
Cashmere.						
Colored Tights	8/6	8/6	9/6	9/6	9/6	
„ Bodies	8/0	8/0	9/0	9/0	9/0	
Spun Silk.						
Colored Tights { Cotton Tops	10/9	10/9	11/6	11/6		
„ „ „	17/6	17/6	18/6	18/6	18/6	
„ Bodies	22/6	22/6	24/6	24/6	24/6	
Pure Silk.						
Colored Tights	35/0	35/0	36/0	36/0	36/0	
„ Bodies	35/6	35/6	36/6	36/6	36/6	

☞ * Only made in Black, Flesh, and Tan Shades.

FANCY HOSIERY, ETC.

Woven Animal Dresses (Heads not included)	From 37/6
Clown's Tights (embroidered in colours)	10/6 12/6 14/6 pair.
Ring Stripe Worsted Suits	17/6
„ „ „ Nose	4/6
„ „ Cotton „	1/9 1/11½
Vertical Stripe Worsted Tights	19/6
„ „ „ Nose	6/11
Worsted Caps	1/3 2/6 2/11

HOSIERY.

LONG TRUNK HOSE,

For use with Cotton Tops, in place of Tights.

	Ladies. '	Gents. '	Children's.
Cotton.			
Bright Colors	1/11½	2/2	From 1/6
Worsted.			
All Colors	—	2/11 3/11	To Order.
Cashmere.			
All Colors	4/11	—	To Order.
Spun Silk.			
Bright Colors	7/11 8/6 8/6	8/6 8/11	—
Special Shades	10/9	11/6	From 6/6
Pure Silk.			
Any Color (to order)	21/0	22/6	From 14/6
Cotton Tops	9d.	9d.	9d.

ORDINARY LENGTH HOSE.

Cotton.			
All Colors	1/6½ 1/11½	—	—
Cashmere.			
All Colors	2/6	—	To Order.
Spun Silk.			
All Colors ...	2/11 4/6	6/11	To Order.
Pure Silk.			
All Colors ...	9/9	16/6	To Order.

GLOVES.

Wisle Thread ...	1/6½	—	
Silk ...	1/11½ 2/11 3/11	2/11	
Gauntlet Gloves ...	3/11	4/11	
(In White, Drab & Tan)			

FANCY CHARACTER SHOES. FANCY CHARACTER BOOTS.

GIRDLES. 8/6 BELTS, 4/6 LEATHER BAGS from 8/6

B. BURNET & CO.,

SPECIALITIES IN DRESS FABRICS

FOR

COSTUMES, CLOAKS, ETC.

SILKS.

Width.	Material.		Price.
50-in.	Tea Gown Damask	- - -	5/11 to 15/
50-in.	Satinette	- - -	8/
24-in.	Spitalfields Silk	- - -	9/9 to 30/
50-in.	Spitalfields Silk	- - -	21/ ,, 60/
21-in.	Faille Silk and Bengaline	- - -	2/3 ,, 5/11
21-in.	Shot Silk and Surat	- - -	2/6 ,, 4/6
26-in.	China Silk	- - -	2/6
21-in.	Pongee and Bengaline	- - -	1/6 to 1/9
21-in.	Velvet	- - -	5/6 ,, 21/
24-in.	Plush	- - -	3/6 ,, 7/6

WOOL AND COTTON.

42-in.	Merino and Cashmere	- - -	1/11½ to 2/6
40-in.	Foule Merino	- - -	2/11
40-in.	Coloured Crepon	- - -	1/6½ to 1/11½
40-in.	Beige	- - -	1/11½
40-in.	Mentone Serge	- - -	1/6½
56-in.	Chamois Cloth	- - -	4/11
50-in.	Dutch Freize	- - -	4/11
50-in.	Cheviot Serge	- - -	3/9
45-in.	Black and Navy Serge	- - -	1/11 to 3/11
50-in.	Tweed	- - -	3/11 ,, 7/6
26-in.	Velveteen	- - -	2/11 ,, 3/6
31-in.	Delaine	- - -	1/ ,, 1/6
31-in.	Sateen and Cambric	- - -	/8½ ,, 1/2½

42, King Street, Covent Garden, London.

B. BURNET & CO.,

COUNTRY ORDER DEPARTMENT.

We have issued this List chiefly as a reference for our numerous suburban and provincial clients, and subjoin a few particulars that will be found useful when writing by post.

PATTERNS.—To ensure a suitable assortment being sent, it is always advisable, owing to our large and varied stock, to specify for what purpose the samples are needed, and to quote colour and material preferred, when possible.

This Price List represents our usual stock, including many Specialities, both in colour and design, not procurable elsewhere. We shall, however, be pleased to forward samples of any other class or quality of material specially required.

A remittance should be sent with all orders, to ensure prompt execution of the same, as references to bankers or other trading firms always cause an unavoidable delay, more especially during busy seasons.

Prepaid orders above £1 in value sent post or carriage free. Cheques payable at London & County Bank, Covent Garden; Postal Orders payable at G.P.O.

42, King Street, Covent Garden, London.

ANGLO-SAXON.

ROBE	{	42-in. Cashmere, 2/6 per yd. 42-in. Crepon, 1/6½ & 1/11½ per yd. 21-in. Silk, 1/9, 2/11 & 3/11 ,, 50-in. Satinette, 8/0 ,,
------	--------	---	---

CLOAK & HOOD	{	50-in. Brocade, 5/11 to 10/9 per yd. 18-in. Brocade Velvet, 2/6 ,,
--------------	---	---

ACCESSORIES...	{	Shoulder Brooches. Gold Orris Lace for Bodice. Jewels for Trimming Leather or Brocade Wallet, 8/6 to 12/6. Sandals, 12/6 per pair.	} <i>See</i> <i>page 34.</i>
----------------	---	--	---------------------------------

REMARKS	{	Cloak may be of same material as the Robe, printed with a design in gold, and should in any case be lined with a good contrasting colour to the dress itself; sleeves lined with the same.
---------	--------	---	--

42, King Street, Covent Garden, London.



B. BURNET & CO.,

CLEOPATRA.

ROBE	{	21-in. Silk, 1/9, 2/6, 2/11 & 3/11 yd.
			42-in. Cashmere or Crepon, 1/6½, 1/11½ & 2/6 per yd.
			24-in. Cotton Crêpe, 8½d. per yd.
YOKE & PENDANTS		{	21-in. Tinsel Brocade, 3/11 to 10/9 per yd.
			21-in. Gold Cloth, 1/11, 2/11 & 3/11 per yd.
CLOAK	{	19-in. Embossed Velvet, 2/6 per yd.
			50-in. Gold Printed Sateen, 1/11½ ,,
			50-in. Brocade, 5/11 to 10/9 per yd.
ACCESSORIES...		{	Gilt Waist Belt, 10/6
			Gilt Crown, 8/9
			Gilt Armlets, 3/11 pair.
			Sandals, 16/6 pair.
REMARKS	...	{	Colouring should be any pale tint or pure white, with rich coloured cloak and contrasting lining.

42, King Street, Covent Garden, London.



DUTCH PEASANT.

SKIRT	{	42-in. Merino, $1/6\frac{1}{2}$ & $2/6$ per yd. 50-in. Cloth, $3/11$ per yd. 50-in. Serge, $1/11\frac{1}{2}$ to $3/9$ per yd.
BODICE	{	21-in. Velvet, $3/11$ & $4/11$ per yd. 25-in. Velveteen, $1/11\frac{1}{2}$ & $3/6$,,
SLEEVES & APRON		{	48-in. India Muslin, $1/3$ & $1/10$ yd. 36-in. Vic Lawn, 7d. & $10\frac{1}{2}$ d. ,,
ACCESSORIES...		{	Cap of stiff Muslin, $8/11$ Bright coloured Neckerchief, $8\frac{1}{2}$ d. Large Gold Brooch or Clasp, $2/11$ Gloves, Shoes and Stockings.
REMARKS	...	{	This dress can be carried out in two shades of a colour, or a subdued contrast.

42, King Street, Covent Garden, London.



EMPIRE.

ROBE ... { 24-in. Cotton Crepe, 8½d. yd.
42-in. Cashmere, or Crepon, 1/6½,
1/11½ & 2/6 per yd.
21-in. Silk, 1/9, 2/6, 2/11 & 3/11 yd.
50-in. Satinette, 8/- per yd.

The ribbon design can be printed in gold, silver or colours on any material chosen, in two days, at a cost of 1/- to 3/- per yd. extra, according to width of material.

ACCESSORIES ... { Three-cornered fichu or folded square
of White Muslin, trimmed with Lace.
Waist belt of gold or silver Braid, or
coloured Ribbon to match printing.
Gloves or Silk Mittens.
Shoes and Stockings.

REMARKS ... { This costume should be carried out
in full tones of pink, blue, yellow, green
or white.

42, King Street, Covent Garden, London.



ELIZABETHIAN.

SKIRT & BODICE ...	{	50-in. Satinette, 8/0 per yd. 25-in. Velveteen, 1/11½ & 3/6 per yd. 18-in. Velvet, 3/11 & 4/11 ,, 21-in. Silk, 1/9, 2/11 & 3/11 ,,
UNDER ROBING ...	{	50-in. Brocade, 5/11 to 10/9 per yd. 20-in. Embossed Velvet, 2/6 ,,
SLEEVES ...	{	Same as Under Robing, and with bands of the material used for Skirt.
ACCESSORIES...	{	Brocade Slippers, 14/6. Plume and Mirror Fan. Lawn Ruffle, 6/11. Velvet or Brocade Cap, with Pearl Edging. Pearl or Jewelled Girdle, 27/6. Sleeve Clasps, 8/6 per pair. Jewels or Pearls. (<i>See List, page 35.</i>)
REMARKS ...	{	Rich colourings and materials should be used for this sketch, dress being ornamented with imitation stones.

42, King Street, Covent Garden, London.



FISH WIFE.

SKIRT	{	31-in. Striped Cotton, 8½d. per yd. 40-in. ,, Merino, 1/11½ ,,
OVER-SKIRT ...	{	31-in. Sateen, 5d. & 7d. per yd. 42-in. Cashmere, 1/11½ ,,
BODICE	{	18-in. Velvet, 3/11 & 4/11 per yd. 25-in. Velveteen, 1/11½ & 3/6 ,,
UNDERBODICE, SLEEVES AND FICHU	{	36-in. Nainsook, 5d. to 1/0 per yd. 48-in. Indian Muslin, 1/3 & 1/10 yd.
ACCESSORIES...	{	Victoria Lawn or Muslin Cap. Fish Basket, 2/0. Black Shoes and Stockings. Gold Braided Ornament on front of Bodice.
REMARKS ...	{	The coloring of over-skirt and bodice should tone with stripes in skirt material.

42, King Street, Covent Garden, London.



GRECIAN LADY.

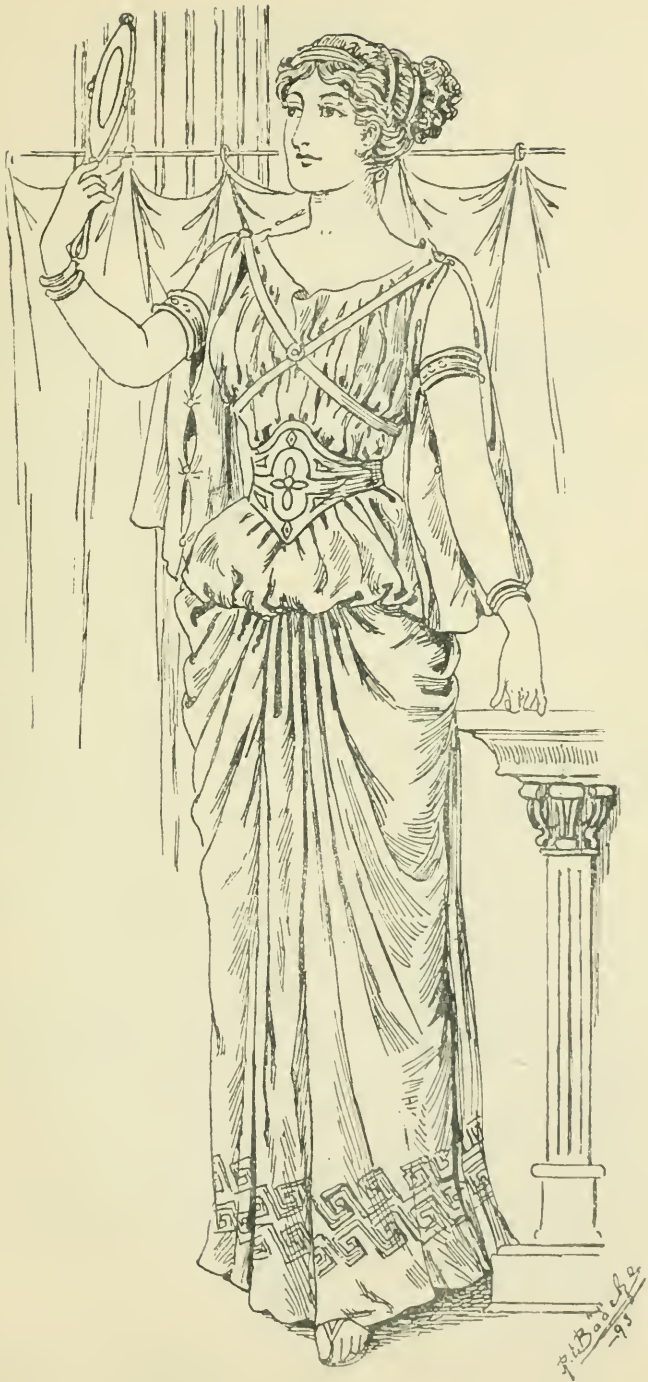
ROBE ... { 24-in. Cotton Crepe, $8\frac{1}{2}$ d. yd.
42-in. Cashmere, $2/6$ yd.
42-in. Crepon, $1/6\frac{1}{2}$ and $1/11\frac{1}{2}$ yd.
21-in. Silk, $1/9$ and $2/6$ yd.

Key border can be printed in gold or color in two days, on strips of the material chosen, at a cost of 1/- per yard extra, or if time permits, the robe when cut out, can be returned for printing.

ACCESSORIES... { Zone, $4/11$ (plain) and $8/11$ (fancy)
Gold Braid (for shoulder straps).
4 Brooch Clasps.
Armlets, $7/11$ a set.
Fillet for hair, $3/11$.
Sandals, $16/6$ pair.
Digitated Stockings, $6/6$ pair (cotton).

REMARKS ... { This dress should be carried out in white or any pale tone of colour.

42, King Street, Covent Garden, London.



ITALIAN PEASANT.

ACCORDION
PLEATED
SKIRT { 31-in. Koula Cotton, 6d. per yd.
42-in. Crepon or Cashmere, 1/6½, 1/11½
and 2/6 per yd.
21-in. Pongee Silk, 1/9, 2/6 & 2/11 yd.

The skirt may be made plain, with three rows of ribbon only, if desired; or supplied already pleated at a cost of 16/6 extra.

BODICE { 36-in. Nainsook, 5d., 7d., 10d. & 1/- yd.
48-in. India Muslin, 1/3 & 1/10 ,,

CORSAGE
SLEEVES &
STRAPS { 18-in. Velvet, 3/11 & 4/11 per yd.
25-in. Velveteen, 1/11½ & 3/6 per yd.

APRON { 50-in. Roman Scarfing, 2/11 & 4/11 yd.
50-in. Cloth, 3/11 per yd.

If plain cloth is used, the apron should be trimmed with bright coloured braids or embroidered.

REMARKS { Colouring should be bright reds,
blues or greens.
Head-dress should be made of the
Scarfing, or Cream Muslin, trimmed
with ribbon.



B. BURNET & CO.,

ILLYRIAN LADY.

SKIRT & BODICE { 42-in. Cashmere, 1/11½ & 2/6 per yd.
50-in. Cloth, 3/11 per yd.

YOKE & SLEEVES { 48-in. India Muslin, 1/3 & 1/10 yd.
36-in. Nainsook, 7d. & 10d. per yd.

APRON & SCARF { 50-in. Striped Algerine, 2/11, 3/11 &
4/11 per yd.
21-in. Striped Satin, 2/11 & 3/11 yd.

ACCESSORIES... { Velvet Cap, with Gold Netting and
Sequins, 7/6
Gilt Trimming for Skirt, 10½d., 1/9
and 2/6 per yd.
Coloured Wool and Tinsel Tassels,
8/6 per doz.
Gloves and Stockings.
Fancy Leather Boots, 21/0

REMARKS ... { This dress should be carried out in
bright colourings.

42, King Street, Covent Garden, London.



JAPANESE.

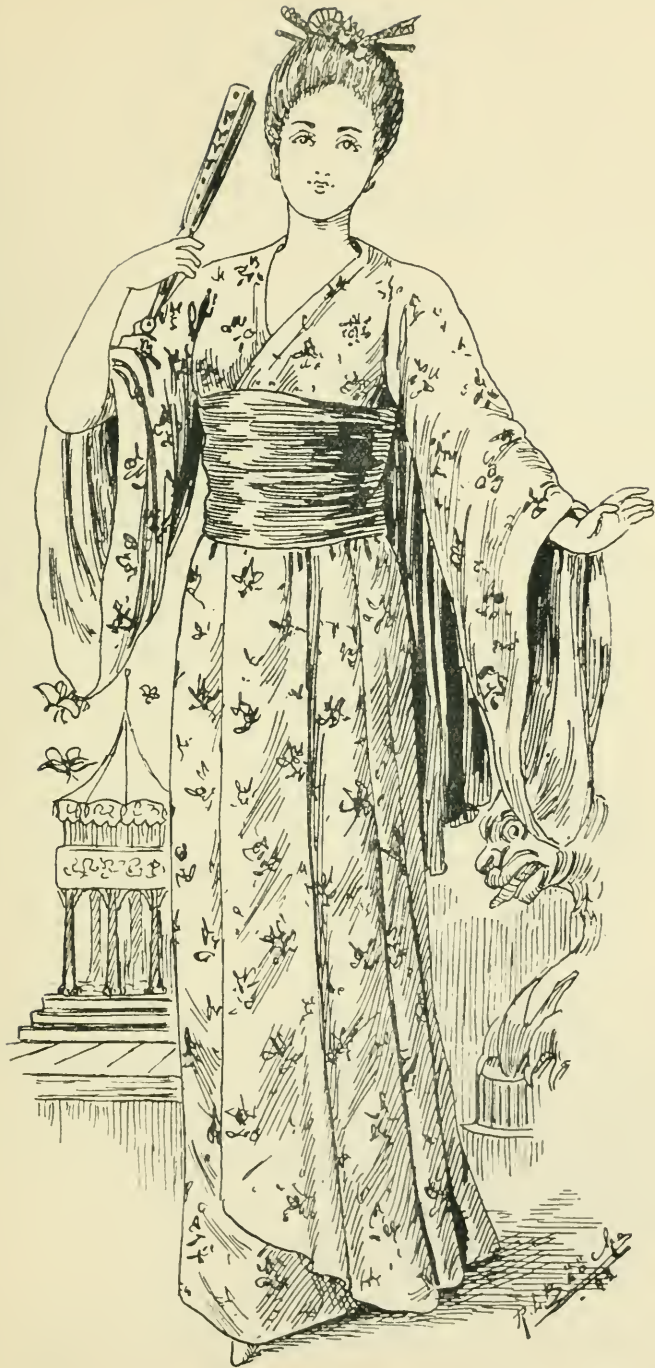
ROBE ... { 50-in. Gold Printed Sateen, 1/11½ yd.
 { 31-in. Printed Cotton, 8½d. yd.
 { 21-in. ,, Silk or Satin, 2/11 &
 3/11 per yd.

SASH ... { 31-in. Koula, 6d. yd.
 { 21-in. Pongee, 1/9 yd.

ACCESSORIES... { Fan, 10½d. to 2/6.
 { Fancy Hair Pins, 1/3 each.
 { Sandal Shoes, 10/6.

REMARKS ... { The lining of robe and sleeves should
 { be a bright contrasting colour, not
 { necessarily the same shade as sash.

42, King Street, Covent Garden, London.



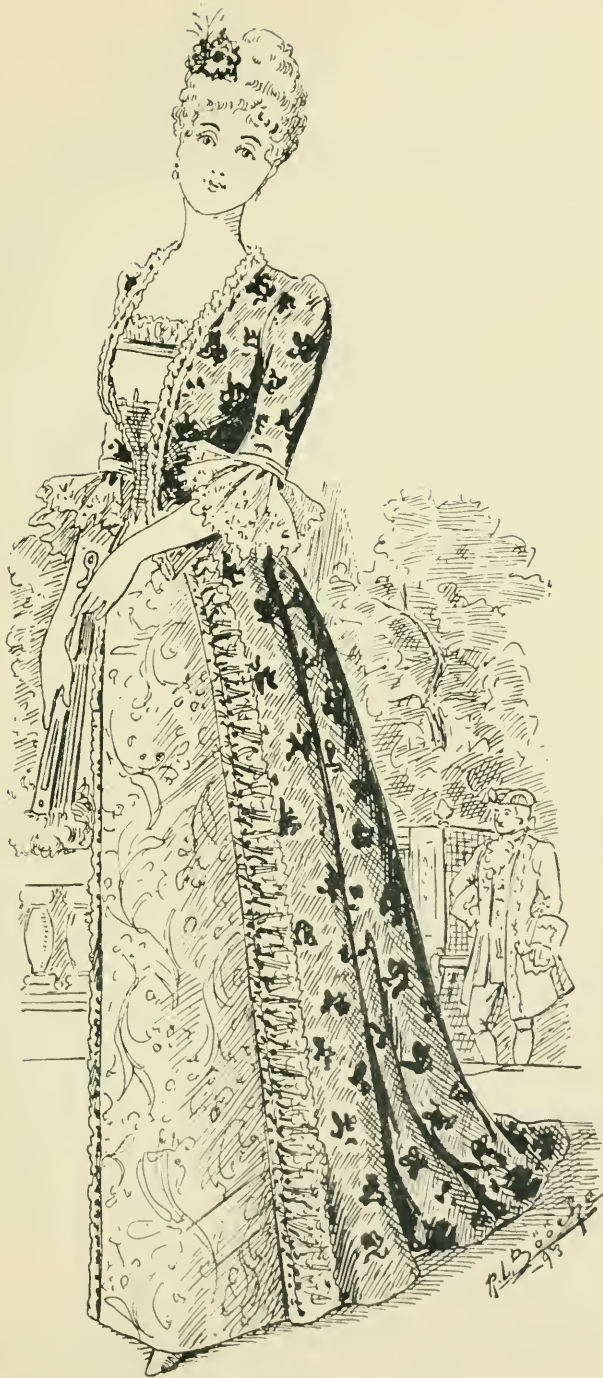
POMPADOUR.

UNDER-SKIRT { 50-in. Damask, 6/6 to 9/11 per yd.
 21-in. Brocade, 2/11 to 7/6 ,,
 31-in. Sateen or Delaine, 1/0½ to
 1/6½ per yd.

OVER-SKIRT { 50-in. Brocade, 6/11 to 10/9 per yd.
 21-in. Printed Satin, 2/11 & 3/6 ,,
 21-in. Brocaded Velvet, 2/6 ,,

ACCESSORIES... { Lace for Trimming.
 Powdered Wig, 20/0 to 30/0
 Jewelled Aigrette for Hair, 4/11
 Brocade Shoes, 14/6 & 16/6

REMARKS ... { The under-skirt should be self-
 coloured, with a bright floral-
 patterned over-skirt. Pompadour
 cane with gilt top could be carried
 in addition, price 5/6



SPANISH DANCER.

SKIRT & BODICE	}	21-in. Silk, 2/11 & 3/11 per yd. 21-in. Satin, 1/11, 2/11 ,, 31-in. Sateen, 5d. per yd.
ZOUAVE & HAT	}	18-in. Velvet, 3/11 & 4/11 per yd. 25-in. Velveteen, 1/11½ & 3/6 ,,
SCARF	}	50-in. Cotton Striped Castilian, 1/2½, 1/6½ & 1/11½ per yd. 50-in. Silk Striped Castilian, 2/11, 3/11 & 4/11 per yd.
ACCESSORIES...	}	Gold Braids. (<i>See page 34.</i>) Gold Spangled Balls, 1/11 & 2/11 doz. Castilian Buttons, 6d. doz. Tambourine, 2/11 Silk Pompons for Hat, 2/9 pair.
REMARKS ...	}	Colouring should be red, yellow or any other strong colour. Black Spanish Lace can be used for head dress, and on the skirt if preferred, in place of gold braid netting and buttons.

42, King Street, Covent Garden, London.



TURKISH GIRL.

SKIRT & CORSAGE { 21-in. Silk, 1/9 to 3/11 per yd.
42-in. Crepon, 1/6½ & 1/11½ per yd.
24-in. Cotton Crêpe, 8½d. per yd.

ZOUAVE ... { 21-in. Velvet, 3/11 & 4/11 per yd.
25-in. Velveteen, 1/11½ & 3/6 ,,

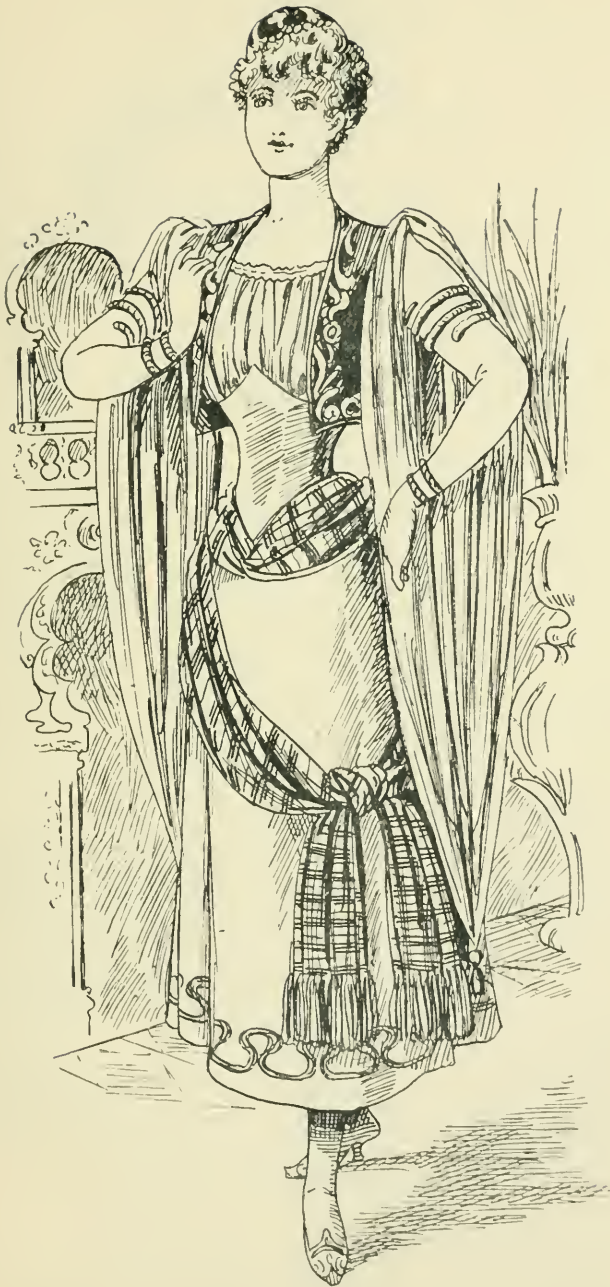
BLOUSE & SLEEVES { 48-in. India Muslin, 1/3 & 1/10 yd.
36-in. Nainsook, 7d. & 10½d. ,,
21-in. Silk, 1/9 & 2/6 yd.

Small gold sprig, spot or crescent can be printed on material for blouse and sleeves in two days, at a cost of 1/- to 3/- per yard, according to width.

ACCESSORIES .. { 50-in. Syrian Stripe, 3/11 & 4/11 yd.
Gold Braid for Zouave and Skirt.
Snake Armlets and Wristlets, 3/11
Gold Netted Cap and Sequins, 3/3
Turkish Slippers, 8/6

REMARKS ... { This costume should be carried out in Oriental colourings, and artistic combinations should be avoided.

42, King Street, Covent Garden, London.



VIVANDIERE.

SKIRT { 31-in. Striped Cotton, $8\frac{1}{2}$ d. per yd.
 42-in. ,, Merino, $1/11\frac{1}{2}$,,
 21-in. ,, Satin, $2/11$,,

Skirt is finished off with a 4-in. stripe of same material in red or blue.

COAT { 50-in. Cloth, $3/11$ & $4/3$ per yd.
 18-in. Velvet, $3/11$ & $4/11$,,
 25-in. Velveteen, $1/11\frac{1}{2}$ & $3/6$ per yd.

WAISTCOAT ... { 50-in. Cloth, $3/11$ & $4/3$ per yd.
 21-in. Satin, $2/11$,,

ACCESSORIES... { Cloth or Velvet Hat, with Tricolor
 Feather, $21/0$
 Water Keg and Strap, $14/6$
 Gold Braids and Buttons. (*See page 34*)

REMARKS ... { This dress should be carried out in
 red, white, and blue, or any other
 national colourings.

42, King Street, Covent Garden, London.



WATTEAU.

UNDER-SKIRT	{	<p>21-in. Printed Satin or Silk, 2/11 & 3/6 per yd.</p> <p>31-in. Sateen or Delaine, 1/0½ & 1/6½ per yd.</p>	
OVER-SKIRT & BODICE	{	<p>21-in. Silk or Satin, 1/11½ & 2/11 per yd.</p> <p>31-in. Sateen or Koula Cotton, 7d. per yd.</p>	
ACCESSORIES...	{	<p>Ribbons.</p> <p>Powdered Wig, 20/0 to 30/0</p> <p>Lace for Frills.</p> <p>Gloves, Shoes and Stockings.</p>	
REMARKS	...	{	<p>The Over-skirt and Bodice should be of a colour contrasting with the flowered Under-skirt.</p> <p>Shepherdess crook can be carried, if desired, price 3 11</p> <p>The bodice can be fitted with hooks for lacing, at a cost of 1/0</p>

42, King Street. Covent Garden. London.



B. BURNET & CO.,

SPECIALITIES.

VELVETS AND VELVETEENS.

Width.	Material.	Price.
24-in.	Silk Plush - - - -	4/6 to 7/6
24-in.	Utrecht Velvet - - - -	3/6 „ 7/6
24-in.	Freize Velvet - - - -	6/6 „ 12/6
24-in.	Genoa Velvet - - - -	12/6 „ 30'
50-in.	Venetian Velvet - - - -	32/ „ 40'
50-in.	Linen Plush - - - -	5/11 „ 10/
50-in.	Jute Velvet (Printed) - - - -	12/6 „ 15/6
50-in.	Plushette - - - -	2/11 „ 3/11
27-in.	Plain Velveteen - - - -	3/3 „ 3/9
27-in.	Corduroy Velveteen - - - -	2/6 „ 3/9
31-in.	Printed Velveteen - - - -	3/6 „ 6/6
27-in.	Moquette Velveteen - - - -	5/6 „ 12/6

DAMASKS AND TAPESTRIES.

50-in.	Satin Sheeting - - - -	6/6
50-in.	Damask - - - -	4/11 to 18/6
50-in.	Brocatelle - - - -	9/6 „ 30/
50-in.	Silk Damask - - - -	21/ „ 60/
50-in.	Silk Gauze - - - -	2/11 „ 5/11
50-in.	Cotton Tapestry - - - -	1/6 „ 4/6
50-in.	Wool Tapestry - - - -	4/6 „ 10'
50-in.	Silk Faced Tapestry - - - -	4/11 „ 30'
50-in.	Wool Damask and Brocatelle - - - -	3/9 „ 5/6
54-in.	Tapestry Serge - - - -	3/11

CRETONNES, DIMITIES AND CHINTZ.

60-in.	Printed Bolton Sheeting - - - -	2/9
24-in.	Glazed Chintz - - - -	1/ to 3/
31-in.	Cretonne - - - -	8½ „ 1/4½
31-in.	Cretonne - - - -	1/4½ „ 2/6
31-in.	Reversible Cretonne - - - -	10½ „ 1/4½
31-in.	Dimity - - - -	1/0½ „ 2/
31-in.	Queen Anne Cretonne - - - -	9½

Madras and Printed Muslins.

42, King Street, Covent Garden. London.

B BURNET & CO.,

FOR FURNISHING PURPOSES.

PLAIN CLOTHS AND SERGES.

Width.	Material.	Price.
72-in.	Diagonal Cloth - - -	6/11
54-in.	Diagonal Cloth - - -	4/11
72-in.	Curtain Felt - - -	4/9
72-in.	Yorkshire Serge - - -	2/11
54-in.	Yorkshire Serge - - -	1/11
50-in.	Wool Canvas - - -	4/3
63-in.	Plain Bolton Sheeting - - -	1/11
50-in.	Dyed Flax Cloth - - -	/10½

CURTAIN LININGS.

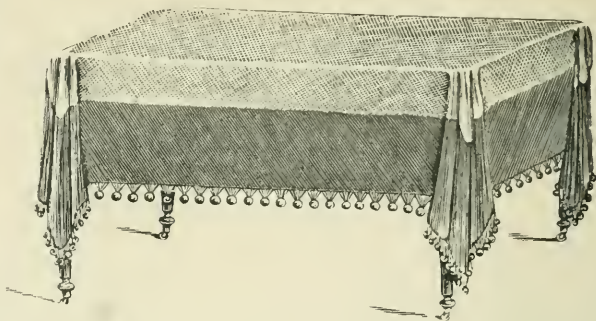
50-in.	Italian Silk - - -	3/11
54-in.	Merino and Satin Cloth - - -	2/6 to 2/11
31-in.	Koula Cotton - - -	/6
31-in.	Sateen - - -	/7
31-in.	Figured Sateen - - -	/8½

EMBROIDERY LINENS. Etc.

36-in.	Italian Linen - - -	1/9 to 2/2
50-in.	Tapestry Canvas - - -	2/6
45-in.	Leather Cloth - - -	2/ to 3/3
54-in.	Leatherette - - -	2/11
36-in.	Embroidery Linen - - -	1/ to 1/9
54-in.	Embroidery Linen - - -	1/6 ,, 2/6
72-in.	Embroidery Linen - - -	2/6 ,, 4/6

42. King Street, Covent Garden, London.

BORDERED TABLE COVERS.



These table covers are made of Serge, Felt, Diagonal Cloth, or wide-width Tapestry, bordered with Plushette, the corners being neatly mitred, and edges doubled hemmed. They can be made to order in two to four days, in any two shades or materials selected from our stock; thus enabling us to supply any special coloring and size required.

When ordering, please give the length and width of Table.

PRICE LIST.

SIZE.	2 x 2	2 x 3	2 x 4	2 x 5	2 x 6	2 x 7	2 1/2 x 2 1/2	2 1/2 x 3 1/2	2 1/2 x 4 1/2	2 1/2 x 5 1/2	2 1/2 x 6 1/2	2 1/2 x 7 1/2	2 1/2 x 8 1/2	2 1/2 x 9 1/2	2 1/2 x 10 1/2	yds.
	2 x 2	2 x 3	2 x 4	2 x 5	2 x 6	2 x 7	2 1/2 x 2 1/2	2 1/2 x 3 1/2	2 1/2 x 4 1/2	2 1/2 x 5 1/2	2 1/2 x 6 1/2	2 1/2 x 7 1/2	2 1/2 x 8 1/2	2 1/2 x 9 1/2	2 1/2 x 10 1/2	
Serge ...	16 6	18 6	20 0	21 6	24 0	27 0	18 6	19 6	21 0	22 6	25 0	28 0	22 0	25 0	28 0	32 0
Felt ...	20 0	24 0	26 0	28 0	32 0	36 0	22 0	25 0	27 0	29 0	33 0	37 0	26 0	30 0	34 0	38 0
Diagonal ...	20 6	24 6	26 6	28 6	32 6	36 6	22 6	25 6	27 6	29 6	33 6	37 6	30 0	35 0	40 0	45 0
Tapestry ...	22 6	26 6	28 6	30 6	34 6	38 6										
	27 0	33 0	36 0	39 0	42 0	45 0										

If trimmed all round with a Woollen Ball Fringe, from 5/6 to 12/6 extra.

Fancy Table Cloths, etc.

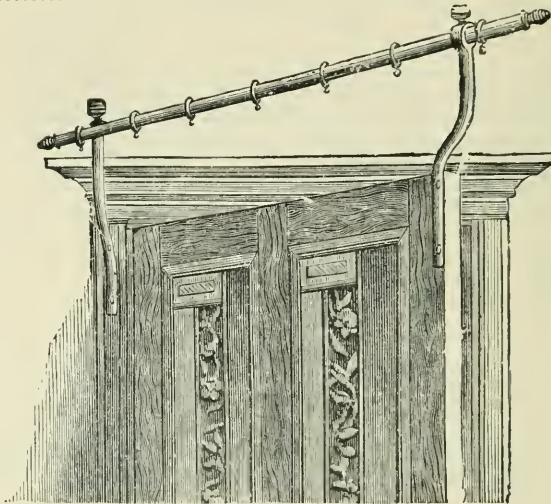
PRINTED VELVETEEN COVERS, 36 x 36 in.	5/6 each.
DAMASK SILK COVERS, 36 x 36 in.	8/11 ,,
FRIEZE VELVET SADDLE BAG MATS, 18 x 18 in.	6 6 ,,
" " " " 22 x 22 in.	7 11 ,,
PRINTED COTTON COVERS, 36 x 36 in.	1 9 ,,
LINEN TEA CLOTHS (Fringed) 36 x 36 in.	4 0 ,,
LINEN SIDE BOARD CLOTHS (Fringed) 18 x 72 in.	3 6 ,,
D'OYLEYS AND FANCY MATS

B. BURNET & CO.,
42, KING STREET, COVENT GARDEN.

PORTIÈRE RODS

SELF-ACTING.

Please state whether a right or left hand bracket is needed; also mention



width of door and door frame, and distance from nearest wall angle.

RIGHT-HAND BRACKET.

PRICE LIST.

INCLUDING BRASS ENDS, BRACKETS AND RINGS.

No.	Rod Diameter.			
1.	$\frac{1}{2}$ in.	Brass Rod, Plain Angle Bracket	6/6
2.	$\frac{5}{8}$ in.	„ „ „	8/9
3.	$\frac{3}{4}$ in.	„ „ „	12/6
4.	1 in.	„ „ „	...	16/6
5.	$\frac{1}{2}$ in.	Reeded Angle Bracket	7/9
6.	$\frac{5}{8}$ in.	„ „ „	10/-
7.	$\frac{3}{4}$ in.	„ „ „	13/9
8.	1 in.	„ „ „	17/6
9.	$\frac{5}{8}$ in.	Iron Rod, Plain Straight Bracket	4/-
10.	$\frac{5}{8}$ in.	Bronzed Rod „ „	5/6
11.	$\frac{5}{8}$ in.	Brass Rod „ „	6/6
12.	$\frac{3}{4}$ in.	„ „ „	8/6

The Patent Angle Brackets throw the curtain well across the door frame, the cheaper rods with straight brackets are intended for Halls, Corridors, etc.

THE ABOVE PRICES ARE FOR RODS NOT EXCEEDING 5 FT. IN LENGTH.

PORTIÈRE CURTAINS*

MADE TO ORDER.

1½ OR 2 WIDTHS PER CURTAIN.			* SINGLE PORTIÈRE. TWO PORTIÈRES	
Material.	Length.		8 ft. Wide.	6 ft. Wide each.
Yorkshire Serge 7 ft. 6 in.	16/6	13/6 each.
Single Plushette ,,	21/6	17/6 ,,
Double ,, ,,	27/-	21/6 ,,
Tapestries @ 4/6 yd. ,,	29/6	24/- ,,
,, 5/6 ,, ,,	35/-	27/6 ,,
Damasks 7/6 ,, ,,	45/6	36/- ,,

* A single Portière can be made 6 feet wide, but at 8-ft. price, the remaining half width of material (2 feet wide and 7 feet 6 inches long) being useful for covering a mantel board, set of cushions, etc.

ONE WIDTH OF MATERIAL PER CURTAIN.

Material.	Length.		6ft. Wide.
72" Yorkshire Serge 7 ft. 6 in.	12/6 each.
,, Felt Cloth ,,	16/6 ,,
,, Diagonal Cloth ,,	17/6 ,,

BRASS & COPPER SWING ARM BRACKETS,

FOR

HALL, ARCHWAY, WALL, OR BED DRAPERY.

ILLUSTRATED LIST ON APPLICATION.

Length.			Price Bracket only.			Price including Rings.
2' 3"	6/-	7/9
2' 6"	8/9	10/9
2' 9"	16/9	18/9

ESTIMATES GIVEN FOR BRASS & WOOD CORNICE POLES,
PICTURE RODS, STAIR RODS, Etc.

B. BURNET & CO.,
42, KING STREET, COVENT GARDEN,
LONDON.

ECCLESIASTICAL

For Hangings and Embroideries.

Dyed Flax Cloth	54 in.	10½d.	yd.
Italian Linen	40 "	1 9	"
Bolton Sheetings	63 "	1 11	"
Yorkshire Serge	54 "	1 11	"
Diagonal Cloth	54 "	4 11	"
Felt Cloth	72 "	4 9	"
Faced Cloths (superfine)	96 "	5/-	"
"	"	72 "	10/-	"

Specialities for Hangings.

Fleur de Lys, printed on Flax	54 in.	1 11	"
"	"	Bolton 63 "	5/11, 4/6	"
Blk.	"	Red Baize 72 "	6/6, 8 11	"
Wool and Cotton Tapestry	50 "	5/11, 4 11	"
in registered designs	50 "	6/6, 8 11	"
"Gothic" Tapestry	In Single and	50 "	8/11, 9 11	"
"Tudor"	Double Colorings	50 "	10/9, 12 9	"
Venetian Velvet (antique designs)	50 "	52/-, 40/-	"

Specialities for Embroideries.

Satin Sheetings (plain and damasked)	50 in.	6 6	"
Daleigno Silk	50 "	6 11	"
Damasked Silks	25 "	4/9, 9 9	"
	of English	28 in. 15/6, 16/6, 18/6	"
	Manufacture	50 in. 21/- to 28 6	"
	63 "	30/- to 45/-	"
Ribbed Silks	22 "	5/6, 8/6	"
Banner	36 in. 11/9, 48 and 54 in. wide	18/6, 25/-	"

Silk Velvets	18 in.	5/6 to 21/-	"
Utrecht	Embroidered in various designs in three days, at a cost of 6d. per yard extra.	24 "	5/11 to 10 6
Silk Plush		"	5/6 to 10/6
Antique Plush	Specially adapted for	"	11/-
"	Embroideries.	36 "	12/9

Church Seating, Mats, and Kneelers	from 1 6 foot.	"
"	Carpeting, 27 in. wide	4 6 yard.
Hassocks (Rush)	from 10/- dozen.
"	(Carpet)	" 10/-

Chancel Rugs and Carpets.

DEPARTMENT.

EMBROIDERIES, FRINGES, AND LACES.

EMBROIDERY DESIGNS.

Designs drawn or copied on to any material, and prepared for working.

Designing 1/- per square foot; Tracing 4d. per square foot.

Embroidery Silks of all kinds. Gold Embroidery Thread.

Laces in 50 Designs and Colourings $\frac{1}{2}$ in. and 1 in. wide, from 4d. to 1/- per yard.

Orphrey & Super Lace, 4 to 6 ins. wide, $\frac{5}{6}$ to $\frac{17}{6}$ per yard.

Book Marker Ribbon (Best Quality.)

Price	Width $\frac{1}{2}$ in.	2in.	$2\frac{1}{2}$ in.
....	1/4	1/10	2/4 per yard.

Plain and Spaced Fringes.

MADE TO ORDER IN THREE OR FOUR DAYS TO ANY SPECIAL COLOURINGS.

	1	$1\frac{1}{2}$	2	$2\frac{1}{2}$	3	$3\frac{1}{2}$	4	$4\frac{1}{2}$	5	6 in.
Silk Purse Twist, 3 to 6 yards...	1/8	2/6	3/3	4/0	4/11	5/8	6/6	7/3	8/0	10/0 yd.
Silk Purse Twist, lengths over 6yds.	1/4	2/2	2/11	3/8	4/4	5/0	5/10	6/6	7/3	8/9 ,,
Crepe Bullion ,, ,, 3 yds.	1/4	2/0	2/8	3/4	4/0	4/8	5/4	6/0	6/8	8/0 ,,
Twisted Bullion ,, ,, 3 yds.	1/8	2/6	3/4	4/2	5/0	5/10	6/8	7/6	8/4	10/0 ,,
Silk & Wool Bullion, any length	1/0	1/6	2/2	2/6	3/0	3/6	4/0	4/6	5/0	6/0 ,,
All Wool Bullion, ,,	6d.	9d.	1/0	1/2	1/4	1/8	2/4	2/8	3/6	4/0 ,,

Stole Fringes.

5 in. Purse Twist Fringe (plain) 5/0; (knotted) 4/0 (See Fair Ends
4 " " " " " 4/0; " 4/6) of 5 inches.

Special Stock Fringes.

5 in. Sewing Silk Fringe 2/11 per yard.
5 in. Purse ,, ,, 5/11 ,,
 $5\frac{1}{2}$ in. Knotted ,, ,, 5/6 ,,

The above are always kept in stock in Gold, Crimson, and a few mixed colorings.

Silk Crepe and Twisted Cords, $2\frac{1}{2}$ d. and $4\frac{1}{2}$ d. yard.

Special Quotations for Aisle & Chancel Cords, Girdles & Tassels.

Fair Linnen Cloths (fringed), 4' by 10', 14/0; 4' by 12', 16/6.

FLAGS, BUNTING, BAIZE, and TWILLS, FOR DECORATIONS.

BUNTING FLAGS.

	SIZE.								
	1	1½	2	2½	3	4	5	6	yds. long
Royal Standard	5/6	10/6	13/6	21/6	32/0	48/0	67/0	—	
Union Jack, Egyptian	3/0	5/6	7/11	10/6	14/0	25/6	—	—	
Ensigns, St. George's, St. Andrew's, Swiss, Spanish } America, Australia.... } France, Germany, Holland, } Belgium, Russia }	3/0	5/6	7/11	9/6	13/6	20/0	29/6	40/0	
Ireland, Italy, Turkey	3/6	6/9	9/6	14/0	16/9	26/9	39/0	56/0	
Scotland....	2/9	5/6	6/9	7/11	10/9	18/0	—	—	
	3/6	6/9	10/0	14/9	17/6	28/0	—	—	
	3/11	7/11	10/9	14/9	20/0	33/6	—	—	

BUNTING, ^{18 in.} 8½ d. yard. TURKEY TWILLS. ^{36 in.} 3/11, 4/9, 6/6, 8/6 doz.

RED AND GREEN BAIZE. ^{40 in.} 1/6½, ^{45 in.} 1/9, ^{72 in. wide.} 2/2, 2/11, 3/11 yard.

COTTON FLAGS. 3/11, 5/6, 8/6 dozen.

Union Jacks, Standards, Ensigns, Irish, Scotch, American & French.

◁ SILK FLAGS. ▷

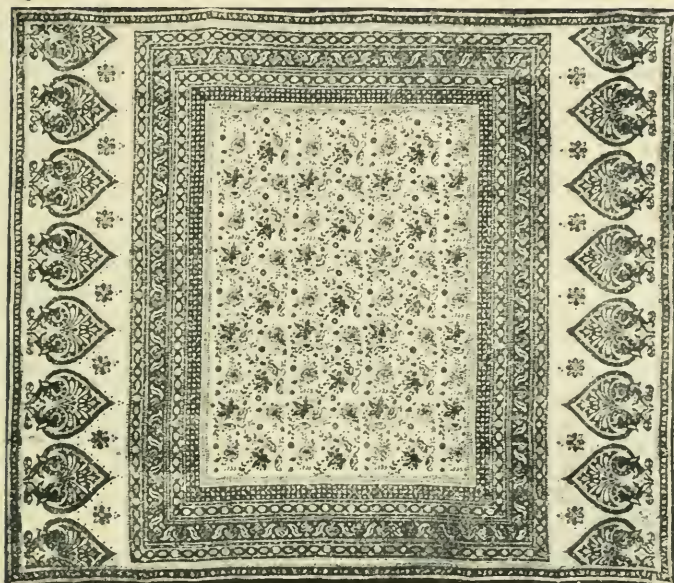
Union Jack, Standard, American and French, 34 ins. square, 3/6
 Union Jack, Standard, Scotch, Irish, Red, White } 18×36 in.. 4/11
 or Blue Ensign, French, American, Russian, }
 Austrian, Italian, Spanish, &c. 36×72 .. 9/6

LADIES' WOVEN CASHMERE RIDING TIGHTS.



PARTICULARS, PRICE LIST & MEASUREMENT FORM ON APPLICATION.

SPECIALITIES
FOR
→ BED-SPREADS. ←



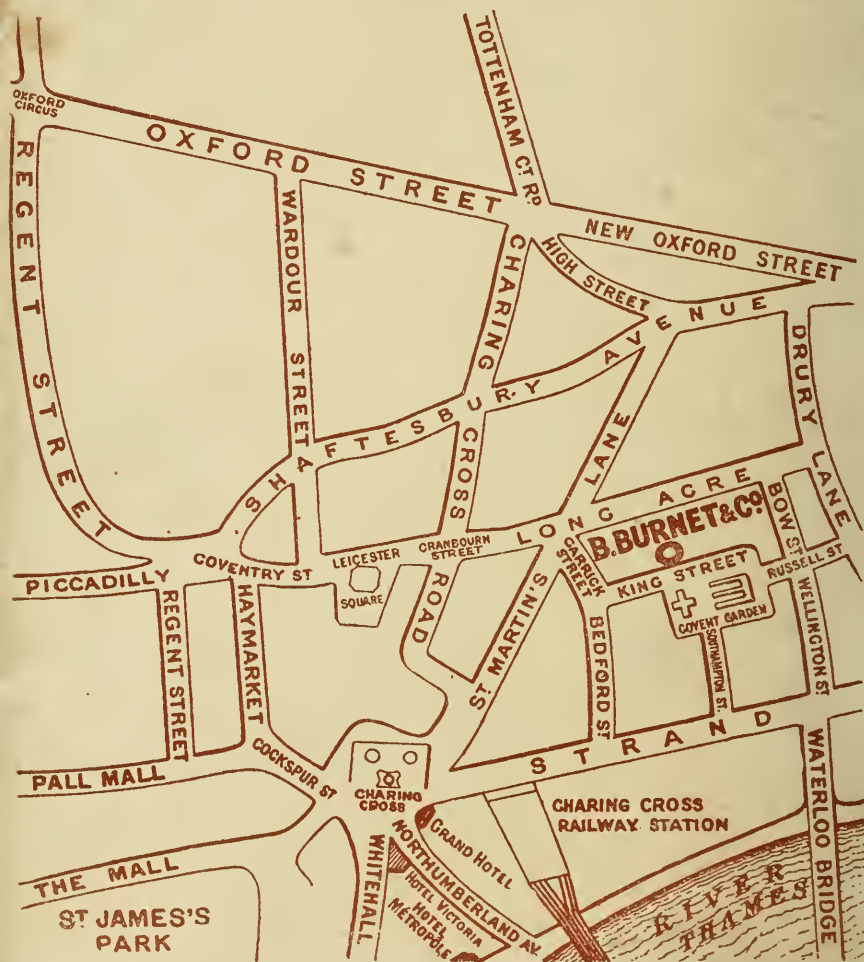
“PINE BORDER” COTTON BED-SPREAD.
ENGLISH MANUFACTURE.

				For 4ft. 6in. Bed.	For 6ft. Bed.
* “PINE BORDER” (as shown above)					
6 shades, warranted to wash	9 6	12 6
* “INDIAN COTTON”					
2 fancy colorings	10 6	14 6
† “PRINTED BOLTON”					
Plain border	17 6	19 6
Frilled border	25/0	30 0
MADRAS MUSLIN	25 0 to	40 0
GUIPURE LACE	35 0 to	50 0
PRINTED SILK	50 0 to	70 0

* Specified Size and Coloring sent on approval.

† Made to order in 3 days, patterns sent for selection.

PLAN OF LOCALITY.



B. BURNET & CO.,

Art Drapers,

KING STREET, COVENT GARDEN,

LONDON.