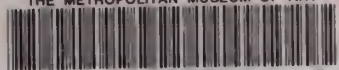


THE METROPOLITAN MUSEUM OF ART



3 0620 00365841 5

119.8

PO1
1935³

THE METROPOLITAN MUSEUM
OF ART
THE LIBRARY



PRESENTED BY

American Art Association

81770



Digitized by the Internet Archive
in 2014

SALE NUMBER 4188

CHINESE TEXTILES

BROCADES ✓ DAMASKS ✓ EMBROIDERIES
VELVETS ✓ KO'SSU TAPESTRY PANELS
INCLUDING RARE ANTIQUE EXAMPLES
FROM THE IMPERIAL PALACES

PROPERTY OF

Williamson G. Moore

Sold by His Order



ON EXHIBITION COMMENCING
SATURDAY, OCTOBER 5, WEEKDAYS 9 TO 6
CLOSED SUNDAY

Public Sale Friday, October 11, at 2:15 p. m.

AT THE

AMERICAN ART ASSOCIATION
ANDERSON GALLERIES · INC

30 EAST 57TH STREET · NEW YORK

1935

PRICED CATALOGUES

A priced copy of this catalogue may be
obtained for one dollar for each
session of the sale

CONDITIONS OF SALE

The property listed in this catalogue will be offered and sold subject to the following terms and conditions:

The word "Company", wherever used in these Conditions of Sale, means the American Art Association-Anderson Galleries, Inc.

The Company has exercised reasonable care to catalogue and describe correctly the property to be sold, but it does not warrant the correctness of description, genuineness, authenticity or condition of said property.

Unless otherwise announced by the auctioneer at the time of sale, all bids are to be PER PIECE as numbered in the catalogue except when numbered catalogue descriptions comprise more than one piece, in which latter case bids are to be PER PIECE unless the description contains the notation "Lot".

The highest bidder accepted by the auctioneer shall be the buyer. In the event of any dispute between bidders, the auctioneer may, in his discretion, determine who is the successful bidder, and his decision shall be final; or the auctioneer may offer and resell the article in dispute.

Any bid which is not commensurate with the value of the article offered, or which is merely a nominal or fractional advance over the previous bid, may be rejected by the auctioneer, in his discretion, if in his judgment such bid would be likely to affect the sale injuriously.

The name and address of the buyer of each article, or lot, shall be given to the Company immediately following the sale thereof, and payment of the whole purchase price, or such part thereof as the Company may require, shall be immediately made by the purchaser thereof. If the foregoing condition, or any other applicable condition herein, is not complied with, the sale may, at the option of the Company, be cancelled, and the article, or lot, reoffered for sale.

Unless the sale is advertised and announced as an unrestricted sale, or a sale without reserve, consignors reserve the right to bid.

Except as herein otherwise provided, title will pass to the highest bidder upon the fall of the auctioneer's hammer, and thereafter the property is at the purchaser's sole risk and responsibility.

Articles sold and not paid for in full and not taken by noon of the day following the sale may be turned over by the Company to a carrier to be delivered to a store-

house for the account and risk of the purchaser, and at his cost. If the purchase price has not been so paid in full, the Company may either cancel the sale, and any partial payment already made shall thereupon be forfeited as liquidated damages, or it may resell the same, without notice to the buyer and for his account and risk, and hold him responsible for any deficiency.

10. If for any cause whatsoever any article sold cannot be delivered, or cannot be delivered in as good condition as the same may have been at the time of sale, the sale will be cancelled, and any amount that may have been paid on account of the sale will be returned to the purchaser.

11. In addition to the purchase price, the buyer will be required to pay the New York City sales tax, unless the buyer is exempt from the payment thereof.

12. The Company, subject to these Conditions of Sale and to such terms and conditions as it may prescribe, but without charge for its services, will undertake to make bids for responsible parties approved by it. Requests for such bidding must be given with such clearness as to leave no room for misunderstanding as to the amount to be bid and must state the catalogue number of the item and the name or title of the article to be bid on. If bids are to be made on several articles listed as one item in the catalogue, the request should state the amount to be bid on each article, unless the item contains the notation "Lot", in which case the request should state the amount to be bid "For the Lot". The Company reserves the right to decline to undertake to make such bids.

13. The Company will facilitate the employment of carriers and packers by purchasers but will not be responsible for the acts of such carriers or packers in any respect whatsoever.

14. These Conditions of Sale cannot be altered except in writing by the Company or by public announcement by the auctioneer at the time of sale.

SALES CONDUCTED BY HIRAM H. PARKE, OTTO BERNET, AND H. E. RUSSELL JR.

AMERICAN ART ASSOCIATION
ANDERSON GALLERIES · INC

30 EAST 57TH STREET · NEW YORK

Telephone PLaza 3-1269

Cable ARTGAL or ANDAUCTIO

HIRAM H. PARKE · *President*

OTTO BERNET · *Vice-President*

ARTHUR SWANN · *2nd Vice-President*

AFTERNOON SESSION

Friday, October 11, 1935, at 2:15

CATALOGUE NUMBERS 1 TO 223 INCLUSIVE

CARVED FEI-TS'UI JADE SNUFF BOTTLE

Flattened flask shape, carved in relief with boatmen upon a river, the reverse with a *mei jên* and child. Has stand.

CARVED FEI-TS'UI JADE SNUFF BOTTLE

Flattened globose body carved in low relief with a mounted warrior and a child astride a *Fu* lion. Has stand.

CARVED FEI-TS'UI JADE SNUFF BOTTLE

Flattened globose bottle, carved in low relief with figures of horsemen in a pine grove. Has stand.

SIX SMALL CIRCULAR EMBROIDERED ROSE SILK COVERS

Rose-red satin embroidered in colored silks with flowers, bats, birds, and butterflies, one with the Buddhist symbols. [Lot.]

TWO EMBROIDERED VERMILION SATIN COVERS

Each worked with three figures of sages, attendants, and an official within garden landscapes, embroidered in polychrome silks. [Lot.]

Lengths, 64 and 45 inches; widths, 30 and 24 inches

TWO PAIRS SMALL KO'SSU SILK TAPESTRY PANELS XVIII Century

Reversed pairs, each piece containing two panels of a phoenix or a crane amid cloud bands and blossoming branches, against coral red backgrounds; bordered with yellow floral brocade.

Height, 25½ inches; width, 6¾ inches

MULBERRY SILK DAMASK COAT

Belted coat with one pocket, of fine mulberry 'tribute silk' with a damask design of dragons coiled within circlets amid floral tendrils.

KO'SSU SILK AND GOLD-WOVEN TAPESTRY PANEL XVIII Century

Woven with a snarling gold dragon coiled about the flaming ball and rising from the waves of the sea; overhead a flying crane.

Height, 36 inches; width, 20 inches

TWO EMBROIDERED YELLOW SILK COVERS XVIII Century

Yellow damask ground embroidered with a blue allover fret, and scattered blossoms and floral medallions in colored silks.

Lengths, 50 and 38½ inches; widths, 15 and 14 inches

10. FOUR JARDINIÈRE VELVET COVERS

XVIII Centu.

12¹² Flame red grounds, woven in green and blue with large peony and chrysanthemum blossoms, one with a lotus surrounded by bats and tendrils. [Lot.]

11. FOUR YELLOW AND GOLD SILK BROCADE ELBOW CUSHIONS

✓ Brocaded all over in gold with a minute design of peony scrollings. [Lot.]

12. FOUR YELLOW AND GOLD SILK BROCADE ELBOW CUSHIONS

✓ Similar to the preceding. [Lot.]

13. FOUR YELLOW AND GOLD SILK BROCADE ELBOW CUSHIONS

✓ Similar to the preceding. [Lot.]

14. THREE ANTIQUE AMBER CUT AND UNCUT VELVET PANELS

7¹² Each depicting *lohan*, in columns of four, with descriptive attributes a symbols, amid cloud bands; key-fret borders.

Height, 52 inches; width, 12 inches

15. PAIR GOLD-EMBROIDERED MIDNIGHT BLUE SATIN COVERS

10- Embroidered in gold and colored silks with a flaming dragon coiled about a ball, surrounded by cloud bands, bats, dragons, and the *pa chi hsiang*; with a border of Shou characters.

Length, 34 inches; depth, 33 inches

16. TWO TIBETAN EMBROIDERED PANELS FROM A LAMA'S ROBE

XVIII Centu.

5- Square panels of rose and mazarine blue satin; surrounded by black border finely embroidered with phoenixes, clouds, dragon heads, and blossoms worked in colored silks in two-thread stitch, in a gold latticed ground.

Length, 46½ inches; widths, 43 and 41 inches

17. PAIR EMBROIDERED CORAL RED SATIN VALANCES

Pao Embroidered in blues with glimpses of quaint landscapes depicting pine groves with pagodas, mountains by the sea, boatmen, and an arched bridge.

Length, 45 inches; depth, 13¾ inches

18. PAIR GOLD-EMBROIDERED BLUE SILK COVERS

10- Mazarine blue silk embroidered in gold with a border of *chih lung* flanked by lotus blossoms, and enclosing a fretted diamond-shaped medallion supported by bats and peony shrubs.

Height, 39 inches; width, 29 inches

19. GOLD-WOVEN BLUE AND CORAL PINK SILK BROCADE COVER

7¹² Coral satin ground woven in blue with peony blossoms with gold centres and voluted stems, hung with symbols of Good Fortune.

Length, 40 inches; width, 25 inches

20. FOUR EMBROIDERED BLUE SILK ELBOW CUSHIONS

17¹² Embroidered in polychrome silks with an all-over design of peonies. [Lot.]

1. PAIR KO'SSU SILK AND GOLD-WOVEN TAPESTRY PANELS *XVIII Century*
Woven with a gold dragon rising from foaming waves, reaching for the flaming ball amid clouds, with a lotus above.
Length, 42 inches; width, 20½ inches
2. FOUR CUT AND UNCUT VELVET SCENIC PANELS
Woven principally in tones of blue and gray, depicting landscape scenes of rivers with pine banks, mountain cascades and waterfalls. [Lot.]
Lengths, 58, 54, and 25 inches; widths, 26, 17½, and 36 inches
3. THREE EMBROIDERED YELLOW SILK COVERS *XVIII-XIX Century*
Pair in canary yellow damask embroidered with a blue fret diaper, scattered blossoms, and a peony medallion; one with circular medallion and field over-run with a profusion of blossoms.
Lengths, 39 inches; width of two, 14 inches, of one, 25½ inches
4. PAIR KO'SSU SILK AND GOLD-WOVEN TAPESTRY PANELS *XVIII Century*
Woven with a snarling gold dragon coiled about the flaming ball, rising from the waves amid cloud scrolls, and a flying crane; below is a blue quatrefoil enclosing a lotus, and *affrontés* cranes above the waves.
Length, 5 feet 1 inch; width, 17½ inches.
5. KO'SSU SILK AND GOLD-WOVEN TAPESTRY PANEL *XVIII Century*
Similar to the preceding; bordered with satin brocade.
Length, 5 feet 7 inches; width, 23 inches
6. KO'SSU SILK AND GOLD-WOVEN TAPESTRY PANEL *XVIII Century*
Similar to the preceding, but smaller.
Length, 39½ inches; width, 21½ inches
7. TWO AMBER YELLOW CUT AND UNCUT VELVET PANELS *Circa 1800*
Uncut field, cut to a design of a circular floral medallion bracketed with peony branches, with *chih lung* at the corners; border of lotus branches.
Lengths, 50 and 46 inches; widths, 29 and 25 inches
8. TWO KO'SSU SILK TAPESTRY VALANCES *XVIII Century*
Figures of the Immortals and attendants in the Shou Shan, or Paradise, with Hsi Wang Mu, Queen of the Fairies, riding on a phoenix amid the clouds; against a coral red background. Embroidered floral borders. [Lot.]
Lengths, 7 feet 10 inches and 6 feet 1 inch; depths, 22 and 21 inches
9. PAIR GOLD-EMBROIDERED CORAL RED SATIN COVERS
Coral red satin, embroidered in gold thread and blue silks with a sacred elephant carrying a vase of peonies; below, with a pair of golden *Fu* lions flanking a prayer wheel; fretted border.
Length, 5 feet 4 inches; width, 21 inches

30. PAIR GOLD-EMBROIDERED CORAL RED SATIN COVERS

Somewhat similar to the preceding; the elephant supporting a vase of fungus with the *yin-yang* and stone gong; below are bats, peony shrubs, and fungus

Length, 5 feet 4 inches; width, 21 inches

31. SIX SMALL CIRCULAR EMBROIDERED ROSE SILK COVERS

Rose grounds, embroidered in polychrome silks with a phoenix, a *kylin*, sacred elephant, figures, and floral patterns. [Lot.]

32. PAIR IMPERIAL EMBROIDERED FLAME RED SATIN DRAGON COVERS

Flame red satin ground, embroidered in shaded blue silks with reversed designs of a snarling five-clawed dragon amid clouds, bats, and a peony branch

Length, 5 feet 1 inch; depth, 22 inches

33. KO'SSU SILK AND GOLD-WOVEN TAPESTRY COVER

XVIII Century

Flame red background, woven with a crane and pagoda beside the sea, and quatrefoil enclosing a lotus, together with bats of Happiness, cloud scrolls, gold vase, and other symbols.

Length, 44 inches; width, 22 inches

34. PAIR JARDINIÈRE VELVET COVERS

XVIII Century

Velvet with flame red ground, woven in jade green with circular medallion of peonies surrounded by the four Flowers of the Seasons, together with peaches of Longevity and bats; lotus border in reversed colors.

Length, 5 feet 2 inches; width, 20½ inches

35. PAIR JARDINIÈRE VELVET COVERS

XVIII Century

Similar to the preceding.

36. PAIR JARDINIÈRE VELVET COVERS

XVIII Century

Similar to the preceding.

37. PAIR JARDINIÈRE VELVET COVERS

XVIII Century

Similar to the preceding.

38. FOUR JARDINIÈRE VELVET SQUARES

XVIII Century

Design of the preceding, differing slightly in the assortment of flowers.

Length, 20½ inches; width, 16¼ inches

39. PAIR JARDINIÈRE VELVET COVERS

XVIII Century

Design similar to the preceding, differing in assortment of flowers.

Length, 34 inches; width, 33 inches

40. PAIR GOLD-WOVEN BLUE SATIN BROCADE COVERS

Damassé purplish blue satin ground, brocaded in gold and colored silks with rows of floral circlets, each enclosing a formalized Shou rosette.

Length, 56 inches; width, 24½ inches

41. TWO IMPERIAL EMBROIDERED BLACK SATIN QUATREFOIL COVERS
 Shaped covers, embroidered in colored silks and gold with circular medallions enclosing Imperial dragons amid *ju-i* heads, waves, and other symbols of Eternity, and phoenixes surrounded by butterflies and flowers.
Lengths, 47 and 44 inches; width, 42½ inches
42. TWO TIBETAN SILK BROCADE COVERS *XVIII Century*
 One of leaf green satin brocaded in red and amber yellow with bats of Happiness, within a fret border; the other with green butterflies forming squares, alternating with brightly colored rosettes. [Lot.]
Length, 47 inches; width, 45½ inches
Length, 53 inches; width, 20 inches
43. THREE KO'SSU SILK AND GOLD-WOVEN TAPESTRY PANELS *XVIII Century*
 Saffron, fawn, and blue grounds, bearing dragons rising above the waves of the sea, surrounded by cloud symbols, bats of Happiness, and various emblems. [Lot.] *Lengths, 39, 38, and 30 inches; widths, 14¼, 16½, and 23 inches*
44. PAIR GOLD AND SILVER SATIN BROCADE COVERS
 Royal blue satin ground, brocaded in gold and silver with rows of floral circlets each enclosing an incense burner.
Length, 56 inches; width, 24½ inches
45. LACQUER RED SILK DAMASK COAT
 Coat with pocket and cord sash; of fine dark lacquer red 'tribute silk', woven with large roundels of key-frets and scrolling floral stems.
46. PAIR EMBROIDERED VERMILION SATIN COVERS
 Embroidered in gold and polychrome silks with peonies, and fruit blossoms, surrounded by bats of Happiness and Taoist symbols of the Eight Immortals.
Length, 5 feet; width, 19½ inches
47. WINE RED SILK DAMASK COAT
 Belted coat with one pocket, of fine wine red 'tribute silk' *damassé* with circular medallions of dragons and long Shou.
48. PAIR IMPERIAL CUT VELVET PANELS *XVIII Century*
 Celadon *ciselé* velvet, disclosing a rose-red satin ground, developing a design of phoenixes, emblem of the Empress, among peony branches; together with a quatrefoil framework enclosing a lotus, above *affrontés Fu* lions and the waves of Eternity. Lotus vine border. *Length, 5 feet 9 inches; width, 21¼ inches*
49. PAIR IMPERIAL CUT VELVET PANELS *XVIII Century*
 Similar to the preceding.
50. IMPERIAL CUT VELVET PANEL *XVIII Century*
 Similar to the preceding.

- 45- 51. VERMILION SILK BROCADE HANGING *XVIII Century*
Flame red silk ground, woven in rows with repeated pairs of figures (the Hundred Boys) alternating with floral branches; pale green valance, trellised and *semé* with rosettes. *Length, 7 feet 2 inches; width, 26½ inches*
- 20- 52. IMPERIAL EMBROIDERED VERMILION SATIN FRONTAL *XVIII Century*
Embroidered in gold and colored silks with two Imperial dragons and a flying phoenix, amid cloud bands interspersed with the canopy, umbrella, wheel, and other Buddhist symbols; valance with bats and clouds. *Length, 58 inches; depth, 37 inches*
- 17½ 53. PAIR KO'SSU SILK AND GOLD-WOVEN TAPESTRY PANELS *XVII Century*
Woven with a gold medallion enclosing an umbrella, symbol of official authority, above a musical stone and jewel of the Precious Objects, a crane above flying before a streaked sky; below are *chih lung* coiled within a blue quatrefoil, a crane, and waves of Eternity. Red background. *Length, 5 feet 5 inches; width, 25 inches*
- 50- 54. PURPLE SILK DAMASK COAT
Belted coat with one pocket, of fine purple 'tribute silk' *damassé* with circular medallions of key-fret diapers entwined by leafage.
- 17½ 55. PAIR IMPERIAL CUT VELVET PANELS *XVIII Century*
Purplish blue velvet, *ciselé* to disclose a rose satin ground, and a design of a phoenix, symbol of the Empress, flying above the sun and a snarling *Fu* lion surmounting a lotus and scrolling tendrils, with *affrontés Fu* lions and waves below. Lotus border. *Length, 5 feet 8 inches; width, 21 inches*
- 45- 56. EMBROIDERED BLACK SATIN FRONTAL
Purplish black satin ground, embroidered with two cranes upon a rocky ledge amid tall branches of rose, purple, and yellow peonies. *Length, 5 feet 10 inches; depth, 34½ inches*
- 6- 57. TWO KO'SSU SILK TAPESTRY PANELS *XVIII-XIX Century*
Woven with roundels of Imperial gold dragons encircled by cloud bands and Buddhist emblems, and of small flowers, gourds, and butterflies; with enc borders of the conventional wave and sea design. [Lot.] *Lengths, 5 feet and 5 feet 4½ inches; widths, 17¼ inches*
- 17½ 58. TIBETAN STRIPED SATIN DAMASK COVER
Scarlet satin, striped with bands of key frets enclosing tiny geometrical motive in yellow, blue, and green. *Length, 7 feet 4 inches; width, 54 inches*
- 7½ 59. EMBROIDERED VERMILION SILK DAMASK HANGING
Vermilion *damassé* ground embroidered in colored silks with plants of plum blossoms, peonies, narcissus, peach blossoms, etc., interspersed with flying butterflies and passerine birds. *Length, 5 feet 10 inches; width, 6 feet 4 inches*

60. SILK- AND GOLD-EMBROIDERED YELLOW SATIN COVER *Late XVIII Century*
Sumptuously worked in shaded silks and gold thread with a border of lotus scrollings, amid which are bats and white *fêng huang* birds, surrounding a central panel depicting bats perched upon clusters of large peaches—signifying Happiness and Longevity—amid green foliage, and the emblems of The Eight Immortals (*pa an hsien*). *Length, 54 inches; width, 52½ inches*
61. JADE GREEN AND VERMILION SATIN DAMASK COVER
Vermilion satin ground, woven with an all-over design of rows of large green peonies nodding on curling leafy stems. *Length, 6 feet 6 inches; width, 55 inches*
62. ROSE RED SATIN BROCADE HANGING *XVIII Century*
Beautifully woven with lateral rows of lotus and peonies in pastel blues, pinks, and ivory with green foliage; together with stripes enclosing a broad band of phoenixes and dragons brocaded in colors and gold. *Length, 7 feet; width, 54 inches*
63. ROSE RED SATIN BROCADE HANGING *XVIII Century*
Companion to the preceding, with a band of floral diaper ornament replacing the dragon and phoenix band. *Length, 6 feet 9 inches; width, 54 inches*
64. BURNT ORANGE SILK BROCADE COVER
Satin ground *damassé* with tendrils and lozenge frameworks enclosing rosettes brocaded in silver and gold. *Length, 5 feet 11 inches; width, 54 inches*
65. PAIR TIBETAN GREEN AND RED SILK BROCADE TABLE COVERS *XVIII Century*
Beautiful jade green ground, woven with a fret diaper in golden yellow, and brocaded in crimson with a central cluster of peaches of Longevity, surrounded by the Hundred Bats, signifying Unlimited Happiness. *46½ inches square*
66. EMBROIDERED APRICOT SILK HANGING *XVIII Century*
Charmingly worked with figures of children (*wa wa*) playing at various pursuits in a meadow landscape with pines, bamboos, and flowers. *Length, 5 feet 5 inches; width, 26 inches*
67. PAIR IMPERIAL KO'SSU SILK AND GOLD-WOVEN TAPESTRY PANELS *XVIII Century*
Magenta ground woven in gold with two writhing five-clawed dragons and Shou medallions amid blue clouds, bats, and sacred emblems; with striped end panels representing the waves of Eternity. *Length, 5 feet 10 inches; width, 18½ inches*

25- 68. PAIR CORAL RED SATIN BROCADE PANELS *XVIII Century*
 Coral satin, brocaded in colors with peonies and the sacred fungus, and a reverséd jeweled lantern; together with bats surrounding a floral medallion, surmounting *Fu* lions flanking a pagoda above waves of Eternity.

Height, 5 feet 2 inches; width, 20½ inches

30- 69. CORAL RED SATIN BROCADE PANEL *XVIII Century*
 Similar to the preceding, the back with a gold dragon in place of a peony shrub.

Height, 58 inches; width, 20 inches

32½ 70. SILK-EMBROIDERED PRINROSE YELLOW SATIN COVER *Late XVIII Century*
 Exquisitely worked with a border and panel of shaded blue and red lotus and peony flowers with elaborate scrollings of blue leafage, interspersed with tiny figures of bats and emblems of the *pa pao*, and centring a huge scarlet lotus flower.

Length, 59 inches; width, 58 inches

12½ 71. EXQUISITE EMBROIDERED CORAL RED SILK FRONTAL *XVIII Century*
 Beautifully worked in pastel colors with four roundels of flowers, grapes, and butterflies, surmounting an expanse of formalized waves dashing in foam against rocks, with dragons and precious vessels visible upon the surface.

Length, 5 feet 6 inches; depth, 41 inches

12½ 72. EXQUISITE EMBROIDERED MIDNIGHT BLUE SILK FRONTAL *XVIII Century*
 Somewhat similar in design to the preceding, upon a ground of midnight blue silk.

Length, 5 feet 3 inches; depth, 45 inches

45- 73. PAIR KO'SSU SILK AND GOLD-WOVEN TAPESTRY PANELS *XVIII Century*
 Flame-red ground, woven with a gold dragon rising from the waves, encircled by bats and clouds, above a quatrefoil enclosing *chih-lung*, and a crane of Longevity hovering over the waves.

Height, 5 feet 1 inch; width, 22½ inches

45- 74. PAIR KO'SSU SILK AND GOLD-WOVEN TAPESTRY PANELS *XVIII Century*
 Similar to the preceding, the design varying slightly in color.

Height, 5 feet 4 inches; width, 22½ inches

[See illustration of one]

45- 75. PAIR FINE JARDINIÈRE VELVET COVERS *XVIII Century*
 Flame-red ground, woven in jade green with a quatrefoil lotus medallion surrounded by smaller peony and lotus flowers, clouds, and bats of Happiness, within a border in counterchanged colors.

Length, 5 feet 3 inches; width, 20¼ inches

[See illustration]

45- 76. PAIR FINE JARDINIÈRE VELVET CHAIR COVERS *XVIII Century*
 Similar to the preceding.

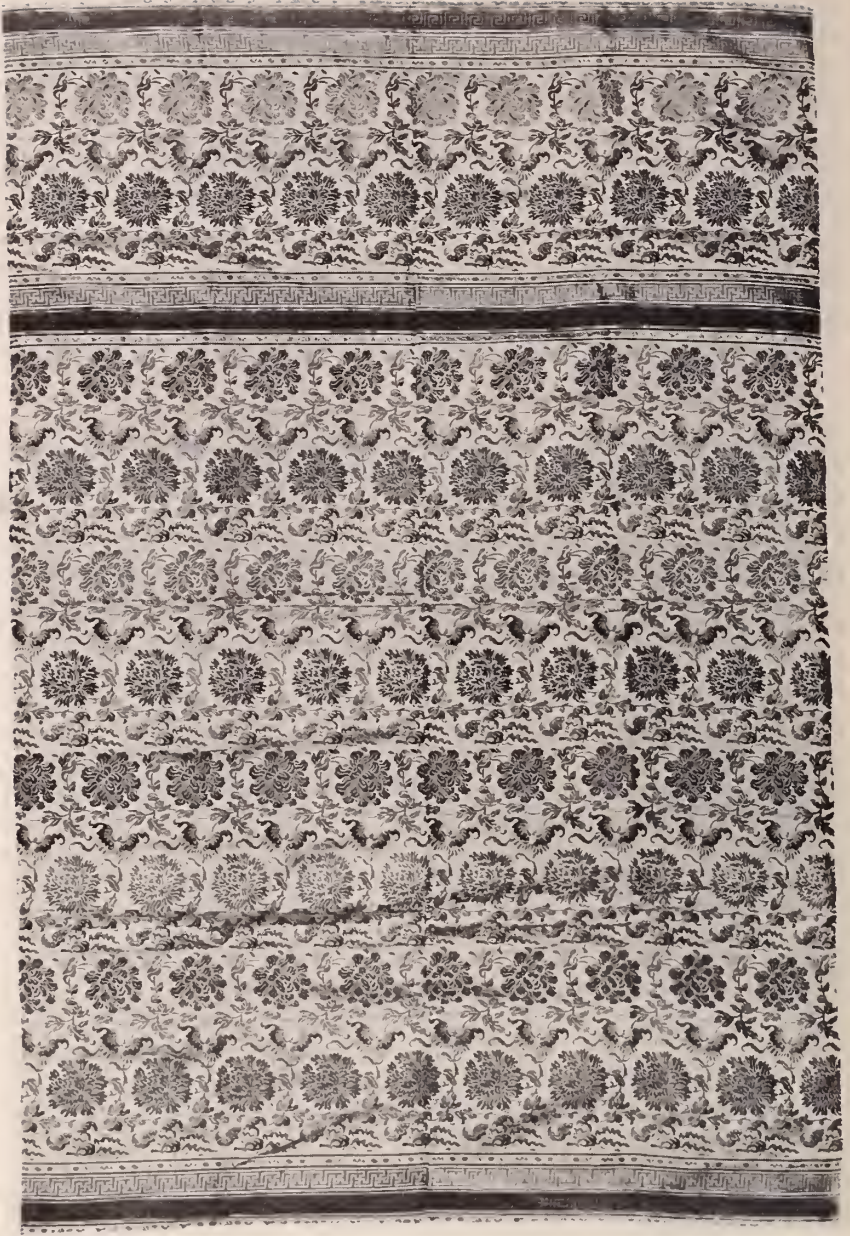


[75]

[74]

[75]

AT TOP: NUMBER 82



7. PAIR FINE JARDINIÈRE VELVET CHAIR COVERS *XVIII Century*
 Similar to the preceding.
8. PAIR FINE JARDINIÈRE VELVET CHAIR COVERS *XVIII Century*
 Similar to the preceding.
9. PAIR FINE JARDINIÈRE VELVET CHAIR COVERS *XVIII Century*
 Similar to the preceding.
10. PAIR FINE JARDINIÈRE VELVET CHAIR COVERS *XVIII Century*
 Similar to the preceding.
11. PAIR JARDINIÈRE VELVET SQUARE PANELS *XVIII Century*
 Somewhat similar in design to the preceding.
Length, 20 inches; width, 16½ inches
12. KO'SSU SILK AND GOLD-WOVEN TAPESTRY FRONTAL *XVIII Century*
 Two snarling gold dragons, coiled amid clouds and *ju-i* heads upon a flame-red ground, surmount the waves of Eternity; a green valance of six red roundels enclosing Shou medallions and a pair of dragons.
Length, 6 feet 3 inches; depth, 40 inches
 [See illustration facing page 8]
13. IVORY SATIN PEONY BROCADE HANGING *XVIII Century*
 Exquisitely woven with lateral rows of blue, scarlet, mauve, brown, and green peonies, alternating with butterflies of Happiness, between bands of *lei wên* fret.
Length, 6 feet 9 inches; width, 55 inches
 [See illustration]
14. IVORY SATIN PEONY BROCADE HANGING *XVIII Century*
 Similar to the preceding. *Length, 6 feet 9 inches; width, 55 inches*
15. ORANGE AND GREEN SATIN LAMPAS PANEL *Late XVIII Century*
 Orange ground, woven in jade green with a floral lozenge diaper, enclosing small cruciform amulets brocaded in gold and silver.
Length, 5 feet 9 inches; width, 59 inches
16. IMPERIAL GOLD- AND SILK-EMBROIDERED FRONTAL *XVIII Century*
 Terra cotta silk, beautifully worked with six golden Imperial dragons pursuing the flaming jewel amid blue clouds and precious vessels, above a blue sea dashing against rocky.
Length, 4 feet 11 inches; depth, 40 inches
17. SCARLET AND GREEN SATIN LAMPAS PANEL *Late XVIII Century*
 Ground of shimmering scarlet satin, woven with a floral lozenge diaper in brilliant jade green, enclosing tiny prayer wheels brocaded in gold and silver.
Length, 5 feet 8 inches; width, 58 inches

- 20- 88. FINE SILK-EMBROIDERED FRONTAL Late XVIII Centur
 Delightfully worked with four roundels of red, blue, and white flowers and butterflies, in a yellow silk ground, above a band of foaming waves; border of embroidered midnight blue silk.

Length, 6 feet 4 inches; depth, 35 inches

- 32¹² 89. GOLD- AND SILK-EMBROIDERED PRIMROSE YELLOW SATIN COVER Late XVIII Centur
 Worked with a panel and border of lotus and peony blossoms with lavish curling blue foliage, interspersed with bats of Happiness, centring a medallion of peaches of Longevity above the waves. *Length, 54 inches; width, 48 inches*

- 50- 90. VERMILION SATIN BROCADE PEONY HANGING XVIII Centur
 Brilliant scarlet ground, *damassé* and brocaded with rows of large single peony blossoms in blue, purple, brown, mauve, and white, with green foliage.

Length, 6 feet 6 inches; width, 5 feet

- 125 91. FLAME RED SATIN LAMPAS PANEL
 Woven with an all-over lattice enclosing rows of square seals in green, blue and yellow, embellished with the endless knot (*chang*).

Length, 5 feet 11 inches; width, 56 inches

- 25- 92. EMBROIDERED CORAL RED SILK FRONTAL XVIII Centur
 Worked in richly colored silks with four large circular floral medallions above a broad band of formalized waves foaming against piles of rockery.

Length, 6 feet 5 inches; depth, 40½ inches

- 42⁵ 93. JADE GREEN AND CRIMSON SATIN DAMASK LOTUS HANGING XVIII-XIX Centur
 Green satin ground, woven in crimson with rows of scrolling branches bearing huge lotus blossoms.

Length, 7 feet 2 inches; width, 58 inches

- 42⁵ 94. JADE GREEN AND CRIMSON SATIN DAMASK LOTUS HANGING XVIII-XIX Centur
 Similar to the preceding.

- 37⁵ 95. JADE GREEN AND STRAWBERRY SATIN DAMASK LOTUS HANGING XVIII-XIX Centur
 Design of the preceding, in a different hue of purplish red.

Length, 6 feet; width, 57½ inches

- 37⁵ 96. JADE GREEN AND STRAWBERRY SATIN DAMASK LOTUS HANGING XVIII-XIX Centur
 Similar to the preceding.

Length, 6 feet 3 inches; width, 57½ inches

7. TWO CHECKERED SHOT SILK PANELS
Minutely diapered and checkered in shades of green and pink.
Length, 5 feet 10 inches and 6 feet 1 inch; width, 54 inches
8. TOMATO RED SILK BROCADE HANGING *XVIII-XIX Century*
Worked in lateral rows with the design known as the Hundred Boys, in soft shades of blue, green and ivory, beneath a broad band woven with rows of dragons and phoenixes, emblems of the Emperor and Empress, enriched with silver threads.
Length, 6 feet 2 inches; width, 54 inches
9. TOMATO RED SILK BROCADE HANGING *XVIII-XIX Century*
Similar to the preceding. *Length, 6 feet 2 inches; width, 51 inches*
10. TOMATO RED SILK BROCADE HANGING *XVIII-XIX Century*
Similar to the preceding. *Length, 6 feet 7 inches; width, 51½ inches*
11. CORAL RED SILK BROCADE HANGING *XVIII-XIX Century*
Design of the preceding. *Length, 7 feet 1 inches; width, 54½ inches*
12. TOMATO RED SILK BROCADE HANGING *XVIII-XIX Century*
Design of the preceding, with variations.
Length, 6 feet 1 inch; width, 57 inches
13. SILVER-BROCADED CORAL RED SATIN DAMASK TABLE COVER
Woven with a trellis enclosing knots of Destiny and interlinked lozenges, and brocaded with silver and gold pearl motives.
Length, 5 feet 8½ inches; width, 54 inches
14. SILVER-BROCADED GOLDEN YELLOW SATIN DAMASK TABLE COVER
Woven with a lozenge trellis enclosing Shou medallions and endless knots alternately, and brocaded with silver pearl motives; bordered with black satin.
Length, 5 feet 6 inches; width, 42 inches
15. SILVER-BROCADED GOLDEN YELLOW SATIN DAMASK TABLE COVER
Design of the preceding. *Length, 6 feet 10 inches; width, 58 inches*
16. STRIPED ORCHID SILK DAMASK COVER
Striped ground of narrow blue, white, and purple bands, bearing a *damassé* design of orchid-colored peonies.
Length, 6 feet 4 inches; width, 4 feet 8 inches
17. EMBROIDERED CORAL PINK SILK PANEL *Early XVIII Century*
Finely worked with figures of a mandarin followed by his attendant bearing a scroll, entering the Shou Shan; welcomed by Shou Lao, god of Longevity, and Hsi Wang Mu flying upon the back of a phoenix.
Length, 5 feet 1 inch; depth, 41 inches

108. STRIPED SILK DAMASK COVERLET

Woven in narrow stripes of blue, white, and red, and *damassé* in sky blue with rows of the Three Fruits (*san kuo*).

Length, 5 feet 6 inches; width, 56 inches

109. STRIPED SILK DAMASK COVERLET

Similar to the preceding.

110. EMBROIDERED MIDNIGHT BLUE SILK TABLE COVER

Worked in brilliant colors with peonies, fruit, lotus flowers, frogs, Buddhist emblems, and other motives, in bands of various widths.

Length, 5 feet 9 inches; width, 30 inches

111. TOMATO RED SILK BROCADE HANGING WITH FIGURES OF CHILDREN

XVIII-XIX Century

Worked in lateral rows with the design known as the Hundred Boys, in so shades of blue, green, and ivory, beneath a broad band of peony blossoms enriched with silver threads.

Length, 6 feet 10 inches; width, 55 inches

112. TERRA COTTA SILK BROCADE HANGING WITH FIGURES OF CHILDREN

XVIII-XIX Century

Design of the preceding, on a terra cotta ground.

Length, 6 feet 9 inches; width, 52 inches

113. PAIR RARE BUDDHISTIC VELVET TEMPLE BANNERS

XVIII Century

Pennants composed of streamers of red, green, and amber velvet, with a small cartouche of blue and gold brocade woven with the sacred Emblems.

Length, 6 feet

114. SCARLET SATIN BROCADE HANGING

Late XVIII Century

Woven in soft colors with rows of small peony blossoms and the Eight Buddhist emblems (*pa chi hsiang*), beneath a broad band of larger peonies, rose, blue, and fawn.

Length, 6 feet 9 inches; width, 55 inches

115. ROSE-RED SATIN BROCADE HANGING

XVIII Century

Rose satin ground, brocaded with a band of peonies and flying phoenix between keyfret and dragon guards, surmounting rows of pink, blue, and yellow peonies amid green leafage.

Length, 6 feet 9 inches; width, 4 feet 5½ inches

ORANGE AND JADE GREEN SATIN DAMASK HANGING *XVIII Century*
 Orange satin ground, *damassé* in beautiful jade green with an allover design of rows of scrolling peony stems curling in alternate directions, beneath an upper band of golden yellow peonies.

Length, 7 feet 2 inches; width, 5 feet

SCARLET SATIN BROCADE HANGING *XVIII-XIX Century*
 Woven in leaf green with an allover design of tiny scrolling stems of peonies and foliage, beneath a broad band of peonies and chrysanthemums in rose, yellow, and blue.

Length, 6 feet 8 inches; width, 52 inches

CORAL RED SATIN DAMASK COVERLET
 Woven with rows of roundels, each consisting of a peony blossom within a circlet of leafage.

Length, 7 feet 8 inches; width, 58 inches

RUSSET AND GOLD SATIN BROCADE LONGEVITY HANGING
 Rich bronze satin ground woven with rows of large blue and gold flying cranes amid the clouds, alternating with *ju-i* heads and peaches in orange, mauve, scarlet, saffron, and other brilliant colors—emblematic of the Longevity wish.

Length, 8 feet; width, 5 feet

GOLDEN YELLOW SATIN BROCADE COVERLET *Late XVIII Century*
 Woven in shades of blue, green, and red with bands of tiny ornaments consisting alternately of a floral roundel and a minute human figure.

Length, 6 feet 11 inches; width, 55 inches

VERMILION SATIN BROCADE COVERLET *Late XVIII Century*
 Design of the preceding, on a vermilion ground.

Length, 7 feet; width, 5 feet 1 inch

FLAME RED SATIN DAMASK COVERLET
 Woven with an allover diaper of octagon and square dies, embellished with floral rosettes.

Length, 7 feet 8 inches; width, 58 inches

CAFÉ AU LAIT SATIN PEONY BROCADE HANGING *XVIII Century*
 Exquisitely woven with lateral rows of blue, salmon pink, brown, green, and mauve, alternating with butterflies of Happiness, between bands of *lei wên* fret.

Length, 6 feet 9 inches; width, 55 inches

35- 124. CAFÉ AU LAIT SATIN PEONY BROCADE HANGING XVIII Cent.
 Similar to the preceding. Length, 6 feet 9 inches; width, 55 inches

32^B 125. PEACOCK BLUE SATIN PEONY BROCADE HANGING XVIII Cent.
 Design of the preceding, upon a rich greenish blue satin ground; rare color.
 Length, 6 feet 10 inches; width, 55 inches

✓ 126. GOLDEN YELLOW SATIN DAMASK HANGING
 Woven with landscape vignettes of recurring design, depicting peasants in
 hut by a lake, cultivating and fishing, with figures of water buffalo.
 Length, 7 feet 2 inches; width, 5 feet 11 inches

✓ 127. GOLDEN YELLOW SATIN DAMASK HANGING
 Similar to the preceding.

✓ 128. GOLDEN YELLOW SATIN DAMASK HANGING
 Similar to the preceding.

✓ 129. GOLDEN YELLOW SATIN DAMASK HANGING
 Similar to the preceding.

10- 130. ROYAL PURPLE SATIN BROCADE COVER
 Purple satin ground, brocaded in gold and silver with rows of Shou me-
 lions surrounded by floral circlets. Length, 7 feet; width, 53 inches

12^{5c} 131. WINE RED SATIN BROCADE COVER
 Design of the preceding, on a wine red satin ground.
 Length, 7 feet; width, 53 inches

35- 132. IMPERIAL CORAL RED SATIN DAMASK HANGING XVIII Cent.
 Woven with rows of large roundels, each depicting two Imperial five-clawed
 dragons pursuing the sacred jewel amid clouds.
 Length, 8 feet; width, 58 inches

35- 133. IMPERIAL CORAL RED SATIN DAMASK HANGING XVIII Cent.
 Similar to the preceding.

3. CORAL RED AND GOLD CHRYSANTHEMUM BROCADE HANGING

XVIII Century

Beautiful satin ground, woven in shades of brownish red, green, and blue, enriched with gold threads, with an allover design of scrolling stems of chrysanthemums with foliage.

Length, 7 feet 1 inch; width, 53 inches

3. PEACOCK BLUE AND GOLD CHRYSANTHEMUM BROCADE HANGING

XVIII Century

Design of the preceding, on peacock blue satin ground.

Length, 6 feet 10 inches; width, 52 inches

3. IMPERIAL EMBROIDERED MIDNIGHT BLUE SILK FRONTAL *XVIII Century*

Sumptuously worked with roundels, each enclosing the figure of a five-clawed dragon (*lung*) pursuing the jewel amid blue clouds; above bands of formalized waves dashing into foam against rockery.

Length, 6 feet 10 inches; depth, 44½ inches

3. ROSE RED SATIN PEONY BROCADE HANGING

XVIII Century

Exquisitely woven with lateral rows of blue, straw yellow, mauve, and green, peonies alternating with butterflies of Happiness, between bands of *lei wên* fret.

Length, 6 feet 9 inches; width, 54 inches

3. ROSE RED SATIN PEONY BROCADE HANGING

XVIII Century

Similar to the preceding.

Length, 6 feet 8 inches; width, 54 inches

3. ROSE RED SATIN PEONY BROCADE HANGING

XVIII Century

Similar to the preceding.

Length, 6 feet 10 inches; width, 54 inches

4. IMPERIAL CORAL RED SATIN LAMPAS COVER

Vermilion satin ground woven with repeats of large peonies in purple, white, blue, gray, and pale green, on leafy stems.

Length, 6 feet 2 inches; width, 5 feet

4. PAIR BUDDHISTIC GOLD BROCADE TEMPLE BANNERS

Pennants of three points, beautifully formed of bands of blue, scarlet, and green floral brocade, woven in gold.

Length, 5 feet 11 inches

- 40-
142. JADE GREEN SATIN PEONY BROCADE COVER Late XVIII Centu
Woven with rows of red and yellow peonies with curling foliage and tendrils between ribbon bands of dragons and *lei wên* ornament.

Length, 5 feet 8 inches; width, 52 inches

- 15-
143. FAWN SILK VELVET COVER
Antique heavy-piled velvet, in fine preservation.

Length, 6 feet 5 inches; width, 48 inches

- 47⁵
144. IMPERIAL SCARLET AND OLD GOLD CUT VELVET HANGING XVIII-XIX Centu

Scarlet ground, beautifully woven in a raised design, *ciselé* in pale gold yellow velvet, of rows of single peony and lotus blossoms alternating with rows of butterflies and Emblems of the Eight Immortals (*pa an hsien*).

Length, 6 feet 10 inches; width, 47½ inches

- 47⁵
145. IMPERIAL SCARLET AND OLD GOLD CUT VELVET HANGING XVIII-XIX Centu

Similar to the preceding.

- 47⁵
146. IMPERIAL SCARLET AND OLD GOLD CUT VELVET HANGING XVIII-XIX Centu

Similar to the preceding.

- 47⁵
147. IMPERIAL SCARLET AND OLD GOLD CUT VELVET HANGING XVIII-XIX Centu

Similar to the preceding.

- 40-
148. IMPERIAL SANG DE BOEUF CUT VELVET HANGING XVIII-XIX Centu
Design of the preceding, in single-toned velvet.

Length, 6 feet 9 inches; width, 50½ inches

- 47⁵
149. TURQUOISE AND ROSE CRIMSON SATIN DAMASK COVERLET
Turquoise green satin ground, *damassé* in rose with an all-over design of peony and lotus sprigs, and flying butterflies.

Length, 6 feet 9 inches; width, 5 feet 1 inch

1. TERRA COTTA SILK BROCADE HANGING *XVIII Century*
Woven with an allover design of tiny scrolling stems of blossoms, and butterflies, beneath a broad band of floral diaper ornament enriched with silver threads. *Length, 7 feet; width, 54 inches*
2. FOUR BUDDHISTIC EMBROIDERED CAFÉ AU LAIT SILK TEMPLE BANNERS
Pennants of three points, worked with crimson peonies and lotus, and scrollings of blue and green foliage. *Length, 5 feet 6 inches*
3. FOUR BUDDHISTIC EMBROIDERED CAFÉ AU LAIT SILK TEMPLE BANNERS
Pennants of four points, with design of the preceding. *Length, 5 feet 3 inches*
4. GOLD-BROCADED CORAL AND JADE GREEN SATIN LOTUS HANGING *XVIII-XIX Century*
Coral satin ground, woven in bluish green with rows of large lotus blossoms centred with pods in gold thread, and interlinked by scrolling green branches. *Length, 7 feet 8 inches; width, 5 feet 1 inch*
5. IMPERIAL HENNA AND INDIGO BLUE CUT VELVET ANTEPENDIUM *XVIII Century*
Henna silk ground, beautifully woven in raised indigo velvet pile with two panels, each displaying a phoenix, symbol of the Empress, amid scrolling peony branches, beneath a band of diaper with dragon and Shou medallions. *Length, 5 feet 8 inches; depth, 37 inches*
6. CORAL AND JADE GREEN SATIN DAMASK COVERLET *XVIII Century*
Orange red satin ground, woven in soft bluish green with rows of huge peonies interlinked by scrolling voluted stems of foliage. *Length, 6 feet 9 inches; width, 57 inches*
7. SCARLET AND JADE GREEN SATIN DAMASK LOTUS HANGING *XVIII-XIX Century*
Scarlet satin ground, *damassé* in green with rows of huge lotus blossoms with centres in gold. *Length, 7 feet 4 inches; width, 59 inches*
8. SCARLET AND JADE GREEN SATIN DAMASK LOTUS HANGING *XVIII-XIX Century*
Similar to the preceding. *Length, 7 feet 2 inches; width, 59 inches*

158. ORANGE AND GOLD BROCADED DAMASK COVERLET

Woven with an allover leafy trellis design, enclosing garlanded rosettes and jeweled at the intersections with small flower heads in gold threads.

Length, 7 feet 4 inches; width, 57 inches

159. SCARLET AND JADE GREEN SATIN DAMASK LOTUS HANGING

XVIII-XIX Century

Scarlet satin ground, woven in green with rows of scrolling branches bearing huge lotus blossoms.

Length, 7 feet 7 inches; width, 5 feet 1 inch

160. SCARLET AND JADE GREEN SATIN DAMASK LOTUS HANGING

XVIII-XIX Century

Similar to the preceding.

161. SCARLET AND JADE GREEN SATIN DAMASK LOTUS HANGING

XVIII-XIX Century

Similar to the preceding.

162. RARE IMPERIAL SILK AND GOLD EMBROIDERY TABLE COVER

XVIII Century

A superb example of the Ch'ien-lung period, in tomato red silk, beautiful worked in pastel colors with a border and panel of lotus and peony scrolling the panel containing five medallions minutely worked in silks and gold threads with 'peacock plumage', in a pattern of pairs of large butterflies, emblematic of Happiness.

Length, 5 feet 3 inches; width, 45 inches

[See illustration]

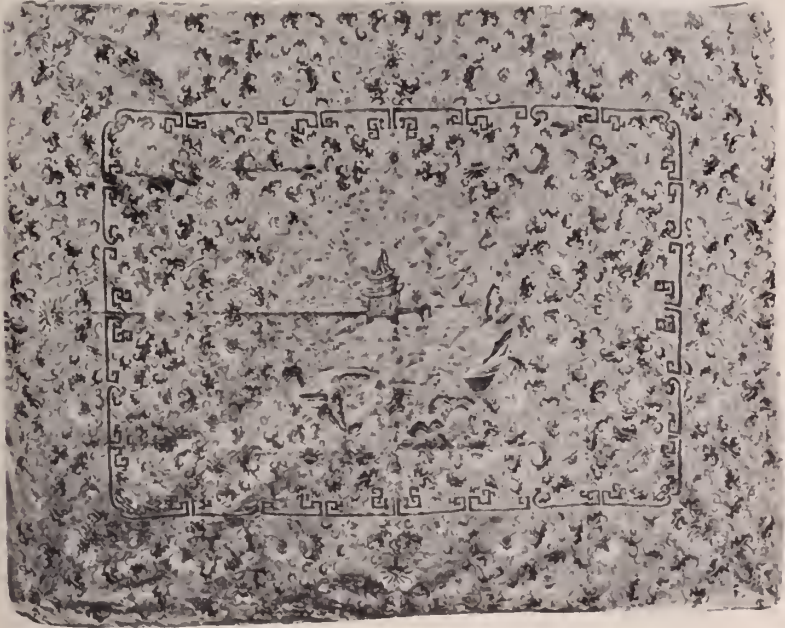
163. GOLD- AND SILK-EMBROIDERED IMPERIAL YELLOW SATIN COVER

XVIII Century

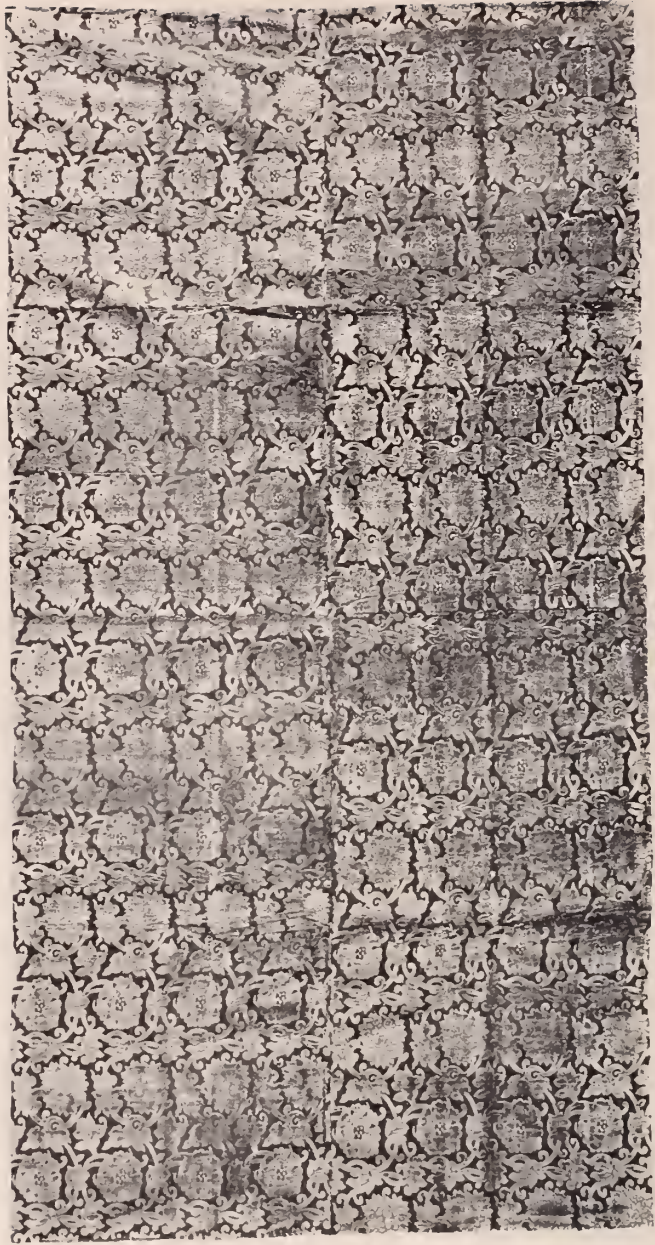
Sumptuously worked with a panel and border of blue, brown, and rose lotus and peony blossoms and scrollings of blue foliage, centring a circular medallion worked with a glimpse of a Chinese garden, with a pine and flying crane signifying Longevity.

Length, 5 feet 1 inch; width, 48 inches

[See illustration]



[NUMBERS 162, AT TOP, AND 163]



14. IMPERIAL CRIMSON AND OLD GOLD CUT VELVET HANGING *XVIII Century*
 Ground of garnet-crimson, sumptuously woven in relief, in beautiful golden yellow velvet pile, with an allover design of rows of interlacing scrolling branches of peonies and lotus. A superb textile, in perfect preservation.
Length, 7 feet 3 inches; width, 46 inches
 [See illustration]
5. TERRA COTTA AND GREEN SATIN DAMASK HANGING *Late XVIII Century*
 Terra cotta ground, *damassé* in jade green with a design of rows of lotus and peony flowers, flying butterflies and bats of Happiness, beneath a broad band of ivory peony blossoms.
Length, 7 feet 3 inches; width, 5 feet
6. THREE BUDDHISTIC EMBROIDERED ROSE PINK SILK TEMPLE BANNERS
 Pennants of four points, embroidered with curling scrolls of lotus, and centred with an ivory satin plaquette worked with a large sacred lotus flower.
Length, 6 feet 9 inches
7. THREE ROSE PINK SILK DAMASK HANGINGS
 A wall covering of 'tribute silk', in pristine condition, woven with a design of circular medallions enclosing pairs of bats and cash, emblematic of Happiness and Wealth. Each two widths.
Total length, about 18 yards; single width, 31 inches
8. TWO ROSE PINK SILK DAMASK HANGINGS
 Design of the preceding. Each two widths.
Total length, about 12 yards; single width, 31 inches
9. TIBETAN BRONZE VELVET COVERLET
 Cover of antique heavy-piled velvet, with *strié* black lines.
Length, 57 inches; width, 48 inches
10. JADE GREEN AND SCARLET SATIN LAMPAS PEONY HANGING
 Brilliant green satin ground, woven in scarlet with rows of large peonies with short stems, curving in alternate directions.
Length, 6 feet 7 inches; width, 55 inches
11. EMBROIDERED CORAL RED SILK HANGING *XVIII Century*
 Beautifully worked with numerous figures of children (*wa wa*) playing at various pursuits in a meadow, with flowering shrubs and a summer house at upper left.
Length, 6 feet; width, 41 inches
12. TOMATO RED AND GREEN SATIN DAMASK PEONY COVERLET
 Shimmering green satin ground, woven with rows of short stems of large red peonies, curling in alternate directions.
Length, 6 feet 5 inches; width, 55 inches

173. TWO ROSE PINK SILK DAMASK HANGINGS

45- A wall covering of 'tribute silk' in pristine condition, woven with a design of circular medallions with groups of flowering shrubs and bamboos. Each two widths. *Total length, about 11 yards; single width, 31 inches*

174. TWO ROSE PINK SILK DAMASK HANGINGS

45- Design of the preceding. Each two widths. *Total length, about 12 yards; single width, 31 inches*

175. TWO ROSE PINK SILK DAMASK HANGINGS

45- Design of the preceding. Each two widths. *Total length, about 12½ yards; single width, 31 inches*

176. IMPERIAL CELADON SATIN LAMPAS COVERLET

37½ Shimmering greenish ivory satin ground, exquisitely woven with rows of curling floral stems lightly drawn in blues and greens, and suggesting the Japanese *ukiyoye*. *Length, 8 feet 1 inch; width, 55½ inches*

177. IMPERIAL CELADON SATIN LAMPAS COVERLET

37½ Similar to the preceding.

178. IMPERIAL SALMON PINK AND GREEN SILK LAMPAS HANGING

XVIII Century

12½ Salmon pink ground, woven in jade green with an allover design of interlacing and scrolling branches bearing alternate rows of large peony heads and lotus flowers. *Length, 7 feet 4 inches; width, 54 inches*

179. PEACH VELVET COVERLET

65- Exceptionally heavy long-piled antique velvet, with beautiful lustre. *Length, 6 feet 10 inches; width, 48 inches*

180. THREE ROSE PINK SILK DAMASK HANGINGS

52½ A wall covering of 'tribute silk' in pristine condition, woven with a design of circular medallions depicting Chinese landscapes with figures of ryots. Each two widths. *Total length, about 18 yards; single width, 31 inches*

181. TWO ROSE PINK SILK DAMASK HANGINGS

35- Design of the preceding. Each two widths. *Total length, about 12½ yards; single width, 31 inches*

182. IMPERIAL SCARLET AND SKY BLUE SATIN LAMPAS LOTUS HANGING

XVIII Century

80- Scarlet satin ground, exquisitely woven in cerulean blue with an allover design of interlacing and scrolling branches supporting rows of large lotus blossom with pods enriched with gold. *Length, 7 feet 6 inches; width, 57½ inches*

- 8 IMPERIAL TURQUOISE BLUE AND MAUVE SATIN LAMPAS LOTUS HANGING
XVIII Century
 Design of the preceding. *Length, 7 feet 6 inches; width, 57½ inches*
- 8 GARNET CUT VELVET COVERLET *Late XVIII Century*
 Satin ground, woven in velvet pile with alternate rows of peony and chrysanthemum sprigs with delicate foliage.
 Length, 5 feet 11 inches; width, 45½ inches
- 8 GARNET CUT VELVET COVERLET *Late XVIII Century*
 Similar to the preceding.
- 8 IMPERIAL SILK-EMBROIDERED CORAL RED SATIN HANGING
 Exquisitely worked in pastel mauve, blue, and green silks with clusters of peonies, magnolias, and *mei hua*, the wild plum blossom, interspersed with gorgeous flying butterflies. *Length, 7 feet 3 inches; width, 5 feet 9 inches*
- 8 IMPERIAL SILK-EMBROIDERED CORAL RED SATIN HANGING
 Similar to the preceding, but smaller.
 Length, 7 feet 2 inches; width, 56 inches
- 8 SILK-EMBROIDERED AUBERGINE SATIN PALACE HANGING
 Worked in deep purple silk with scattered medallions of blossoms and peaches.
 Length, 9 feet; width, 31 inches
- 8 EXQUISITE SILK-EMBROIDERED CORAL RED SATIN
 CHRYSANTHEMUM HANGING
 Delicately worked in pastel shaded blue, green, and yellow silks with butterflies hovering amid scattered stems of chrysanthemums, the emblem of Winter.
 Length, 7 feet 4 inches; width, 56 inches
- 8 PEACOCK BLUE SATIN LAMPAS COVERLET AND FRONTAL
Damassé in pale lavender with a design of mounting branches of large peonies and foliage.
 Length, 7 feet 8 inches; width, 5 feet 1 inch
 Length, 5 feet 8 inches; width, 34 inches
- 8 LILAC AND LEAF GREEN CHECKERED SILK VELVET COVER
 Antique velvet checkered in tiny squares of green and gold, with beautiful lustre.
 Length, 5 feet 2 inches; width, 49 inches
- 8 LILAC AND LEAF GREEN CHECKERED SILK VELVET COVER
 Similar to the preceding.
- 8 TWO ROSE PINK SILK DAMASK HANGINGS
 A wall covering of 'tribute silk' in pristine condition, woven with an allover design of Shou medallions, bats, and endless knots. Each two widths.
 Total length, about 12½ yards; single width, 31 inches

- 25- 194. TWO ROSE PINK SILK DAMASK HANGINGS
 Design of the preceding. Each two widths.
Total length, about 12 yards; single width, 31 inches
- 25- 195. TWO ROSE PINK SILK DAMASK HANGINGS
 Design of the preceding. Each two widths.
Total length, about 12½ yards; single width, 31 inches
- 30- 196. TURQUOISE AND MAZARINE BLUE SILK BROCADE COVERLET
 Woven with a rustic turquoise diaper design brocaded with rows of large leaves enclosing stems of turquoise peonies.
Length, 7 feet 8 inches; width, 5 feet 1 inch
- 10- 197. TWO STRIPED SILK HANGINGS *XVIII-XIX Century*
 One with a plaid checker design in shot mauve, scarlet, green and yellow silk the other woven with vertical stripes diapered and dotted with square designs.
Length, 6 feet 6 inches; width, 54 inches
Length, 6 feet 2 inches; width, 56 inches
- 110- 198. IMPERIAL CRIMSON AND YELLOW CUT VELVET HANGING *XVIII Century*
 Golden yellow ground, beautifully woven in *ciselé* relief with an allover design of rows of interlacing scrolling branches of peonies and chrysanthemums.
Length, 7 feet 2 inches; width, 46 inches
- 30- 199. TWO ROSE PINK SILK DAMASK HANGINGS
 A wall covering of 'tribute silk' in pristine condition, woven with allover design of clusters of roundels formed by cranes of Longevity. Each two widths.
Total length, about 12½ yards; single width, 31 inches
- 25- 200. TWO ROSE PINK SILK DAMASK HANGINGS
 Design of the preceding. Each two widths.
Total length, about 12½ yards; single width, 31 inches
- 25- 201. TWO ROSE PINK SILK DAMASK HANGINGS
 Design of the preceding. Each two widths.
Total length, about 12 yards; single width, 31 inches
- 20- 202. CHECKERED SILK HANGING OF GOOD WISHES
 Woven in a squared design with stripes of blue, green, scarlet, maroon, etc. the squares diapered with tiny Shou emblems, bats, peaches, Buddha's hands, citrons and cash, emblematic of various Good Wishes.
Length, 6 feet 7 inches; width, 55 inches
- 60- 203. IMPERIAL GARNET CUT VELVET HANGING *XVIII Century*
 Woven with an allover *ciselé* design of interlacing scrolling branches of peonies and lotus.
Length, 7 feet 5 inches; width, 47 inches

21. TWO CHECKERED SATIN DAMASK HANGINGS WITH BUDDHIST EMBLEMS
Woven with a squared pattern checkered in scarlet, mauve, green, turquoise, and yellow, diapered with tiny lozenges containing the Eight Buddhist Emblems (*pa chi hsiang*). *Length, 5 feet 7 inches; widths, 53 and 56 inches*
25. IMPERIAL GOLD-EMBROIDERED BLUE SILK QUATREFOIL COVER
XVIII Century
Embroidered with four golden five-clawed dragons rising from the waves of the sea, encircled by clouds and peony stems tied with the *pa chi hsiang*.
Length, 51 inches; width, 41 inches
25. PAIR BLUE AND WHITE CHECKERED SILK DAMASK PANELS
Patterned with blue and white squares minutely diapered, with a broad band of turquoise *damassé* with phoenix and peony medallions.
Length, 5 feet 9 inches; width, 54 inches
27. THREE EMBROIDERED CORAL RED SILK HANGINGS
Embroidered in gold and colored silks with floral designs, a sacred elephant, a heron, and a Shou medallion. [Lot.]
28. TWO BLUE AND WHITE CHECKERED SILK HANGINGS
Variously diapered; one banded in mazarine blue, turquoise, gray, and ivory.
Lengths, 6 feet 10 inches and 5 feet 9 inches; width, 53 inches
29. TWO PAIRS EMBROIDERED SILK ELBOW CUSHIONS
Yellow, green, and black grounds, embroidered in gaily colored silks with all-over floral designs. [Lot.]
30. ROSE-RED SILK BROCADE COVER
Rose satin ground woven with a close design of green leafage surrounding rows of pastel colored lotus and chrysanthemums; border of black satin.
39 inches square
31. TWO SCUTARI JARDINIÈRE VELVET PANELS
XVII Century
Salmon pink and green cut velvet disclosing a fawn ground, one with a pineapple design centred by a circular palmette, the other with arched field enclosing flowers.
Lengths, 48 and 42 inches; width, 22½ inches
32. SIX EMBROIDERED VERMILION SATIN COVERS
Embroidered in polychrome silks with floral designs, phoenixes and other birds, the sacred fungus, and a *mei jên*. [Lot.]
33. SIX SMALL CIRCULAR EMBROIDERED SILK COVERS
Floral patterns, butterflies, dragons, and bats of Happiness, embroidered in polychrome silks. [Lot.]

214. SEVEN EMBROIDERED YELLOW SATIN PHOENIX PANELS

Embroidered in polychrome silks outlined with gold thread, with long-tailed *fêng huang* flanking large rose peony blossoms. [Lot.]

*Length of two, 5 feet 11 inches; width, 9½ inches
Length of five, 55 inches; width, 10 inches*

215. SIX EMBROIDERED VERMILION SILK COVERS

Embroidered in colored silks with floral designs, pheasants, butterflies, and figures. [Lot.]

216. PURPLE CUT AND UNCUT VELVET QUATREFOIL COVER

Late XVIII Century

Shaped cover, cut to an allover design of butterflies and floral sprigs, centre with a medallion.

Length, 52 inches; width, 44½ inches

217. SIX SMALL CIRCULAR EMBROIDERED SILK COVERS

Floral patterns, animals beside a stream, and court figures, embroidered in polychrome silks. [Lot.]

218. TWO DARK BLUE SATIN BROCADE QUATREFOIL COVERS

XVIII-XIX Century

Shaped covers of midnight blue satin brocaded in gold and colored silks with dragons coiled above waves and surrounded by clouds. *About 48 inches square*

219. SIX SMALL CIRCULAR EMBROIDERED ROSE SILK COVERS

Rose-red satin grounds, embroidered in colored silks with floral pattern butterflies, and birds. [Lot.]

220. SIX SMALL CIRCULAR EMBROIDERED SILK COVERS

Embroidered in colored silks with assorted designs of flowers and fruit, butterflies and birds. [Lot.]

221. FOUR EMBROIDERED SILK AND BROCADE COVERS

Embroidered in polychrome silks with figures in gardens surrounding a medallion head, flowers, bats of Happiness; and a 'Louis XV' floral brocade panel. [Lot.]

222. THREE ASSORTED SILK BROCADE AND EMBROIDERY COVERS

As exhibited. [Lot.]

223. FOUR ELBOW CUSHIONS

Assorted floral designs; one embroidered, three brocaded in gold and silk. [Lot.]

[END OF SALE]

Total 5963 ⁵⁰



Composition and Presswork

by



PUBLISHERS PRINTING COMPANY

William Bradford Press

NEW YORK



THE METROPOLITAN
MUSEUM OF ART

Thomas J. Watson Library

