



No. 1
G. 1
Empire

EMPIRE COLLECTION

Containing 474 pieces in three volumes
and classified under thirteen groups.

Volume A -

Impression sur Laine
Seris Fleurs tres couvert
Le Damasse
Seris de Fleurs Espaces

Total Pieces - 130

Volume B -

Dessins Pour Bordures
Miniatures
Caraxis Fleurs
Grandes Fleurs Espaces
Impression sur chaîne
Fleures et Rayures

Total Pieces - 128

Volume C -

Les Textures
Rayures
Divers

Total Pieces - 230

The collection embraces a richly diverse cross section of the best French fabrics for dresswear mostly created during the Empire period dating about 1874 to 1894.

Covering as it does such disparate techniques as warp Printing - Damask - Overprints on Weaves - etc, it represents the nadir of French textile ingenuity.

Many mills from all over France contributed their skills to the collection, particularly the finest detailed hand engraved steel blocks and rollers.

The prints in general show the strong influence of Oberkampf's work at Jouy and some indeed are contemporaneous.

The warp prints are particularly interesting in their detail and fineness of control.



No. 1
Gr. Coleccion Empiral
Vol. A



The
Mary Ann Beinecke
Decorative Art
Collection

STERLING
AND FRANCINE
CLARK
ART INSTITUTE
LIBRARY



No. 1

Impression

A

Sur Laine





No. 101-A

Gr

Impression Sur Laine



No. 1E2-A
Gr.

Impression sur
Laine





No.

104-A

Gr.

Impression sur Laine



No. 105-A.
Gra

Impression sur Laine



No. 106-A
Gra

Impression sur Laine



No.
Gr.

107-A

Impression Sur Laine



No. 5
Grav. *Semis de Fleurs*
Tres Courtes





No. 108-A
Gr. Sernis de Fleurs
tres court



No. 109-A.

Les
Sernis de Fleurs
tres courtes



No. 110-A

Gr
Sernis de Fleues
tes couvert



No. III - A.
Gr. Serwis de Fleurs
tues concert

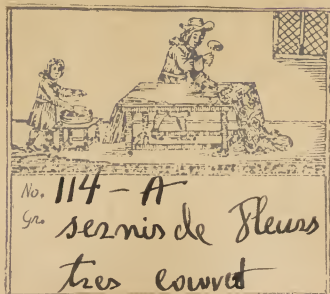


No. 112-A
Gr. Serenis de Fleurs
tres couvert



No. 113-A

Srs
Sernis de Xenas
Artes conves



No. 114 - A
Gr. sermire de fleurs
tres court





No. 116 - A

Gr. semis de fleurs
à tres couvert



No. 117 - A
Gr
Scenis de Fleues
tres courat



No. 118 - A

Les
Semis de Fleurs
Les carrés



No. 119-A

Gr.
Serwis de Fleurs
tres correct



No. 120-A
Gr.
Sernis de Fleurs
tres court





No. 122 - A

Gr^{de}
Serris de Fleurs
à la Couvert



No.
52

Le Damascé

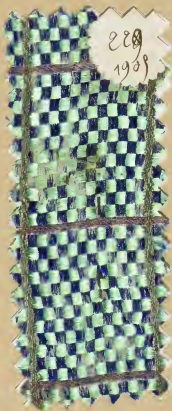




No. 123-A

Gr.

Le Damassé



220
1909



No. 124-A

Gr.

Le Damassé



No. 125 - A

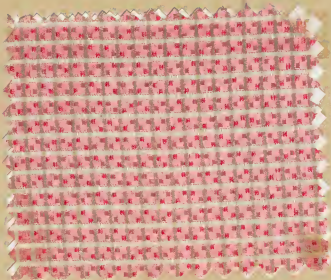
Yrs

Le Damassé



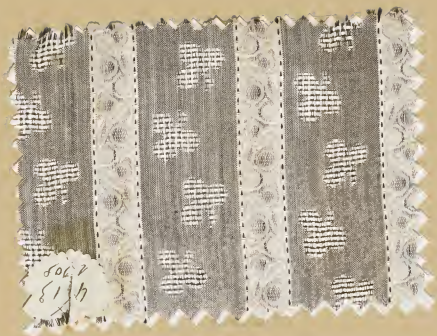
No. 126-A

Le Damassé



No. 127-A

Gr^a
Le Damassé



5062
817



No. 128-A

Yrs

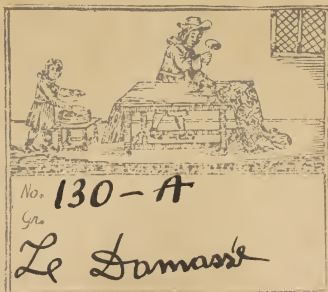
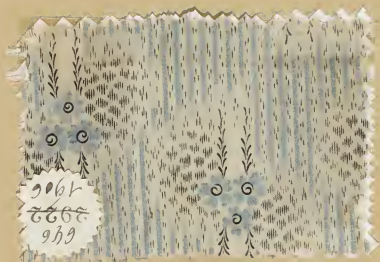
Le Damassé



No. 129-A

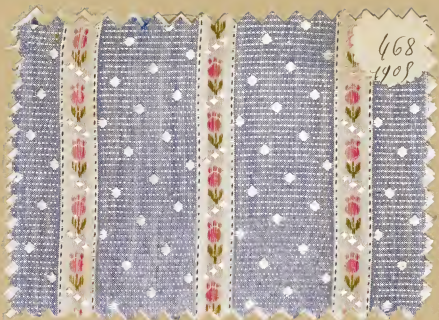
Gr.

Le Lamasse









No. 133-A

Gr.

Le Damassé



No. 134-A
Gr

Le Samané



No. 135 A

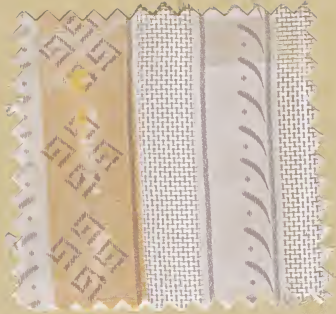
Le Damassé



No. 136 - A

yr.

Le Damassé



No. 137-A

Gr.

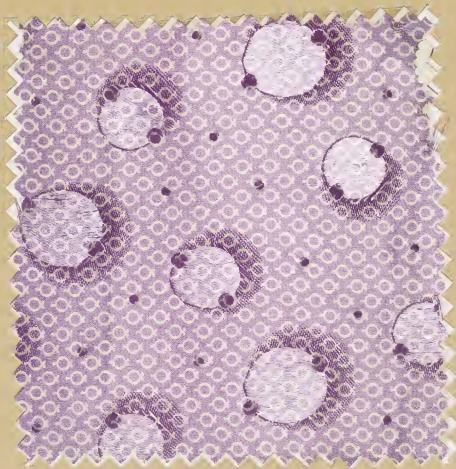
Le Damassé



No. 138-A

Gr

Le Damassé



No. 139-A

Gr.

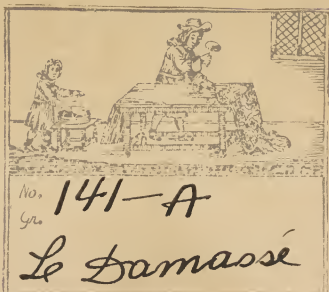
Le Damasse

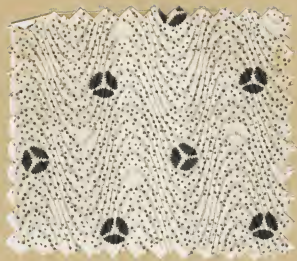


No. 140 - A

Grs

Le Damassé





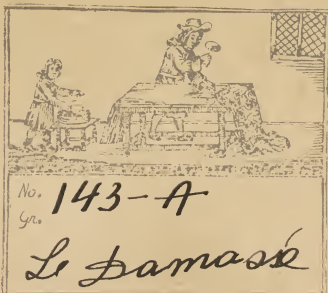
No. 142 - A

Gra

Le Damassé



8064
2/27



No. 143-A
Yrs.

Le Damascé



No. 144-A
Gr.

Le Damassé



836.
1908



No. 145-A

Gr

L. Damassi



No. 146-A
Gra

Le Jamusie



No. 147-A

Gr

Le Damassé

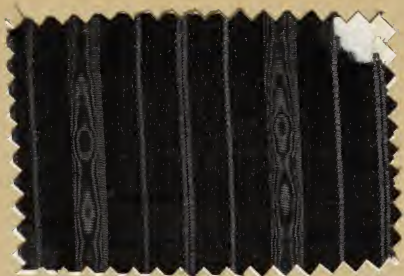


No. 148-A

Gr

Le Damassé





No. 150 - A

Gr.

Le Damassé



No. 151-A
Gr.

Le Damassé



No. 152 - A

Gr.

L. Lamassé



No. 153 - A

Gr.

Le Franc



No. 154 - A

Grs

Le Tamassé



No. 155-A
Gr.

Le Damascé



No. 156 - A
Gra

Le Jamassé



No. 151 - A

Gra

Le Damassé



No. 158-A

Grs.

L. Lamassie

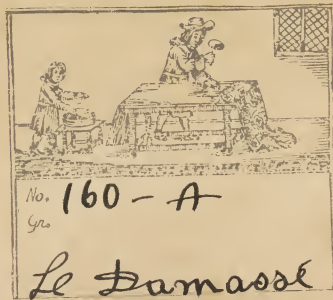


159
A



No. 159-A
Gr.

Le Damassé





9064
8 1/4



No. 161 - A

Gr.

Le Damassé



No. 162 - A
Gr.

Le Tamassé



No. 163-A
Gr.

Le Tamisé



No. 1
Les
Semis de Fleurs
Espais





No. 164-A
Gr

Semis de Fleurs
Espace's



No. 165 - A
Gr.

Semis de Fleurs
Espacés



No. 166 - A

Gr.

Semis de Fleurs
Espacés



No. 167-A

Semis de Fleurs
Espacés



No. 168 - A
Gr.
Semi de Fleurs
Espaçado



No. 169-A

Gr.

Semis de Fleurs
Copies



No. 170-A

Gr

Semis de Fleurs
Espace's





No. 172 - A

Semis de Fleurs
Espaces



No. 173-A.

Gr
Semis de Fleurs
Espaces



No. 174 - A

Cms

Semis de Fleurs
Espaces



No. 175 - A.

Gr.
Semis de Fleurs
Espace's



No. 176 - A.
Gr^{de}
Semis de Fleurs
Espaces.



No. 177-A

Grs.

Semis de Fleurs

Espaces



No. 178 - A

Gr.

Semis de Fleurs
Espace's



No. 179-A
Gr. Semis de fleurs
Espaces



No. 180 - A

Gr.

Semis de Fleurs
Espacés



No. 181 - A
Gras
Semis de fleurs
Espacés



No. 182-A

Gr.

Semis de fleurs

Espace's



No. 183 - A

Gr.

Semis de fleurs
Espace's



No. 184-A.

Gr.

Semis de fleurs
Espacés



No. 185 - A

Gr.

Semis de Fleurs
Espaceés



No. 186-A
Gr.
Semis de fleurs
Esprais



No. 187 - A
Gr.
Semis de Fleurs
Espace



No. 188 - A

*Semis de fleurs
Espaces*



No. 189-A

Srs

Semis de Fleurs
Espacés



No. 190 - A

Gr

Leinis de Fleurs
Espasés.





No. 192 - A

Gr.

semis de Fleurs
Espacés





No. 194 - A

Semis de Fleurs
Espacés



No. 195 - A

Gr

Semis de Fleurs
Espacés



No. 196 - A

Gr.

Semis de Fleurs
Espaces



No. 197 - A.

Yrs

Semis de Fleurs
Espacés





No. 199-A

Gr

Semis de Fleurs
Espaces



No. 200-A

*Semis de Fleurs
Espaces*





No. 202 - A
Gr.
Sernis de Fleurs
Espace's



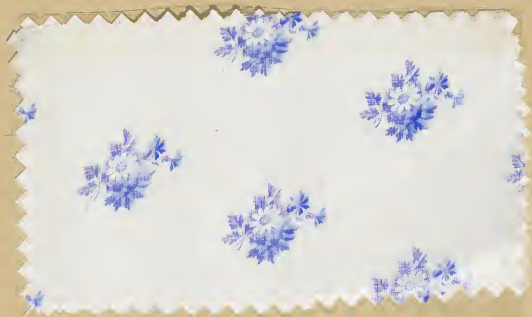
No. 203 - A
Senus de Fleurs
Espace's



No. 204-A

Semis de Fleurs
Espaces





No. 206 - A
Cyr
Semis de Fleurs
Espacés



No. 207 - A
Gr
Semis de Fleurs
Espaces



No. 208 - A
S^{rs} Semis de. Fleurs
Espaces



No. 209 - A
Sms de Fleurs
Espacés



No. 210 - A
Sms de Fleurs
Espacés



No. 211 - A
Cyr
Semis de fleurs
Espacés



No. 212 - A

^{Gr}
Semis de Fleurs
Espaces



No. 213 - A

Grs

Semis de Fleurs
Espaceés





No. 215 - A

Gr.

Semis de Fleurs
Espacés





No. 217 - A

Gr

Semis de Fleurs
Espacés



No. 218 - A

Gr.

Semis de Fleurs
Espacés



No. 219-A

Gr.

Semis de Fleurs
Espaces



No. 220 - A

Semis de Fleurs
Espacés



No. 221- A
Semis de Fleurs
Espacés





No. 222-A

Gr.

Semis de Fleurs
Espacés



No. 223 - A

Gr

Semés de Fleurs
Espacés



No. 224 - A

Gr.

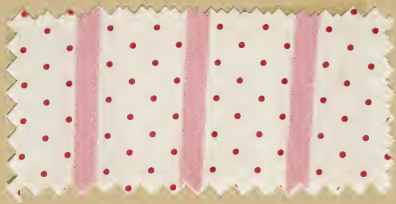
Semis de Fleurs
Espacés



No. 225 - A

Gr

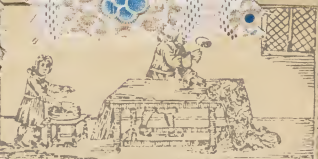
Semus de Fleurs
Espacés



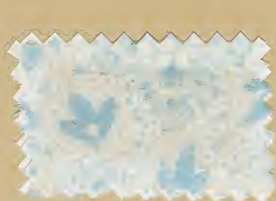
No. 226 - A

Gr

Semis de Fleurs
Espace's



No. 227 - A
Gr. Semis de Fleurs
Espaces



No. 228-A

Gr.

Semus de Fleurs
Espacos



No. 229 - A

*Semis de Fleurs
Espaces*



No. 230 - A

Grs.

Semés de Fleurs
Espacés



No. 231 - A

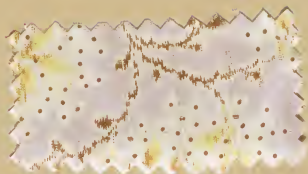
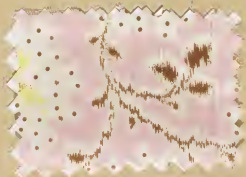
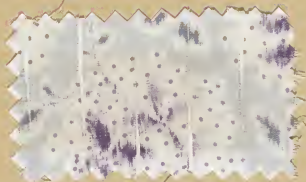
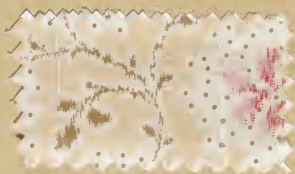
Gr.
Semis de Fleurs
Espacés



No. 232 - A

Semis de Fleurs
Espace's

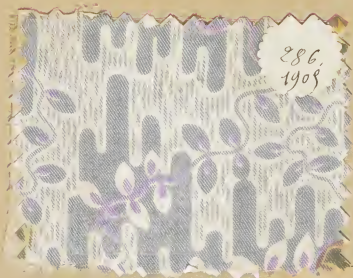




No. 234 - A

Grs

Semis de Fleurs
Espacés



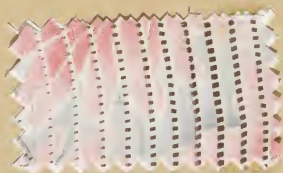
286
1908



No. 235 - A

Grs.

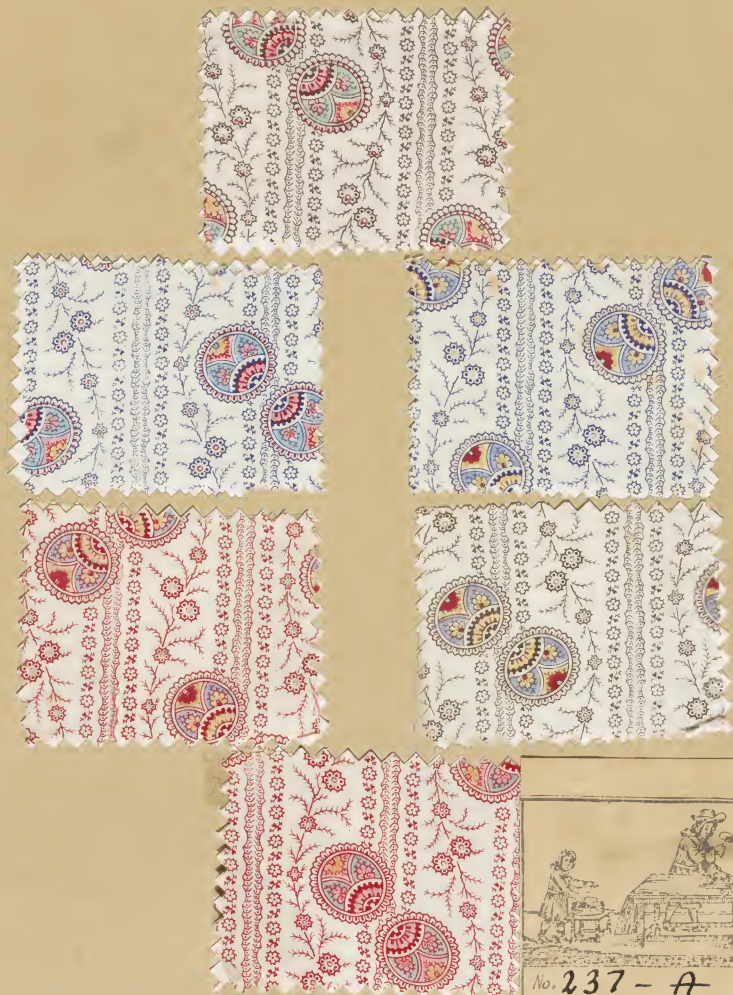
Semis de Fleurs
Espaces



No. 236 - A

Gr.

Semis de Fleurs
Espaces



No. 237 - A

Semés de Fleurs
Espaces



No.

Gr.

Vol. B



The
Mary Ann Beinecke
Decorative Art
Collection

STERLING
AND FRANCINE
CLARK
ART INSTITUTE
LIBRARY



No.

Herwin's Poet Borders





No. 238 - B.

Les
Dessins pour
Bordures



No. 239 - B.

Gr
Dessins pour
Bordures



No. 240 - B,
Gr.
Dessins pour
Bordures



No. 241 - B.
Gr.
Dessins pour
Bordures



242-B

Gr
Dessins pour
Bordures



No. 243 - B.

Gra

Dessins pour
Bordurés



No. 244 - B

Gr.

Dessins pour
Bordures



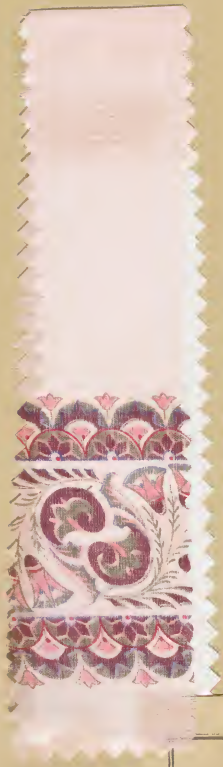
No. 245 - B.
Gr.
Dessins pour
Bordures



No. 246 — B
Gr
Dessins pour
Bordures



No. 247 — B
Gr.
Dessins pour
Bordures



No. 248 - B.
Gr.
Dessins pour
Bordures



No. 249 - B

Gr.

Desins pour
Bordurés



No.
Gr. *Ecossais Fleuriz*





No. 250-B,

Gr

Geossia's Fleurs



No. 251 - B,
Grs

Ecossais Fleur's



No. 25h - B,
Gr.

Ecossais Fleurs



No. 253 — B,
Gr.

Écossais Fleurs



No. 254 - B,
Gr.

Ecossais Fleur's



25



No.
52

Miniatures





No. 255A-B,
Gr.

Minature's



No. 256 - B.
Grs

Miniatures



No. 257-B.
Gr.

miniatures



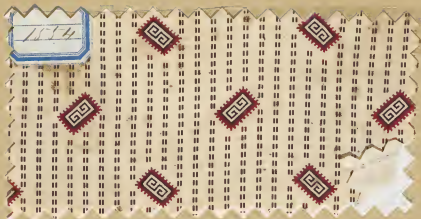
No. 258 - B
Grs.

miniatures



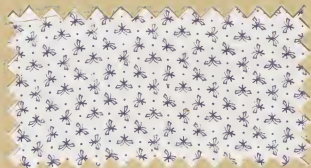
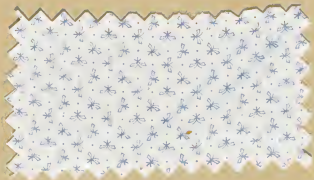
No. 259- B,
Grs

miniatures



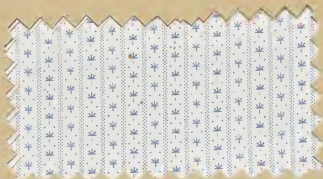
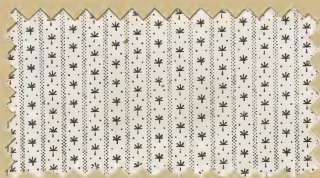
No. 260-B.
Grs

Miniatures



No. 261 - B
Gr.

Miniatures



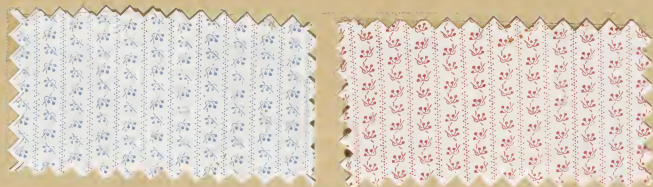
No. 262 — B
Grs

Miniatures



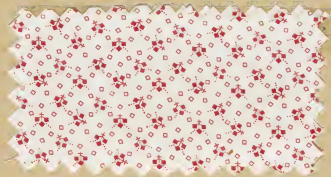
No. 263 - B,
Gr.

Miniatures



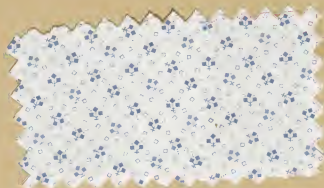
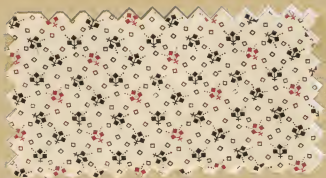
No. 264 - B
Grs

Miniatures



No. 265 - B,
Gra

Miniatures



No. 266 - B.
Gra

Miniatures



No. 267 - B,

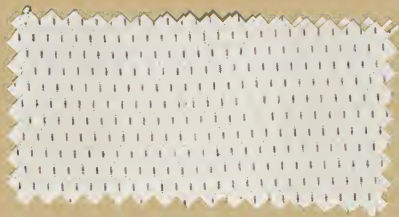
Gr.

Miniatures



No. 268 - B,
Grs

Miniatures



No. 269 - B,
Gr

miniatures



No. 9
G. Vander Kerk & Co's





No. 270 - B,
Gr.

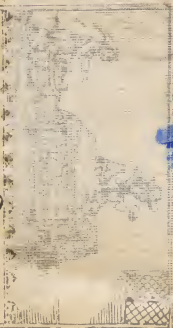
Garden fleurs Espaces



No. 271 - B

Gr

Garden Fleur Espaces



No. 272 - B
50c

Garden Flowers - Esparis



Garden Flower Espaces



No. 274-B

Gr.

Garden Fleuz Espruces



No. 275 - B

Gr

Garden Fleur Express



No. 276-B.

Gr.

Darden Fleur Espaces



No. 9
Gr. Impression Sur chaîne





134

1908



No. 277-B

Gr.

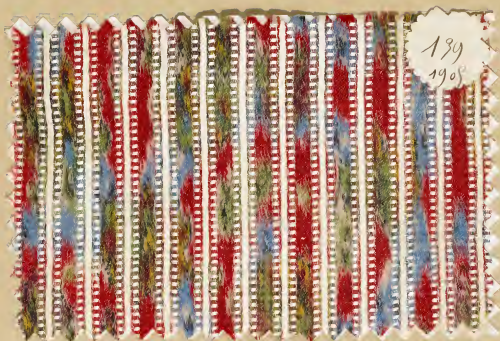
Impression sur
chaîne



No. 278 - B

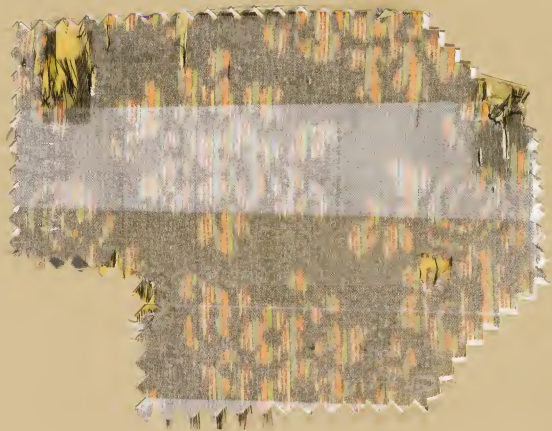
Gr.

Impression sur chaîne



No. 279 - B.
Grs

Impression sur chaîne



No. 280-B.
Gra

Impression sur chaîne



106
770



No. 281 - B
Gra

Impression sur chaîne



No. 282 - B

Gr

Impression sur chaîne



No. 283 - B
Gr.

Impressaria suz Maine



No. 284 - B
Grs

Impression sur chaîne



No. 285 - B
Gra

Impression sur chaîne



No. 286 - B
Grs

Impression sur chaîne



No. 287 - B,
C/2

Impression sur chaîne



No. 288 - B.
Gr.

Impression sur chaîne



No. 289 - B

Gr.

Impression sur chaîne



No. 290 - B
Gr.

Impression sur chaîne



82012
504



No. 291- B
Gr.

Impression sur draine



No. 292 - B
Gra

Impression sur chaîne



11-11-11
6061



No. 293 - B
Gra

Impression sur chaîne



No. 294-B
Gr

Impression Sue chaine



No. 295 - B
Soc.

Impression Sur chaîne



No.

Flans et Rayons





No. 296 - B.
Grs

Fleurs et Rayures



Mrs. of Raynes

No. 297-B





No. 298 - B
Geo.

Flowers & Rayures



No. 299 - B
Grs.

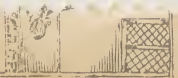


Flowers of Raynes



Flowers et Rayures

300 B



Flowers of Rayures

301 -





No. 302 — B.

Gr.

Fleurs & layures



No. 303 - B

Gr

Fleurs et Rayures



No. 304 - B

Gr.

Fleurs et Rayures



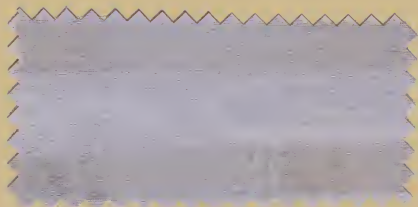
No. 305 - - - B
Gr.

Fleurs et Rayures



No. 306 — B
Gr.

Fleurs et Rayures



No. 307— B
Grs

Fleurs et Rayures



No. 308 — B

Gr.

Flours et Rayures



No. 309 — B
Gr.

Fleurs et Rayures



No. 310 - B

Gr

Fleurs et Rayures



No. 311 — B
Gra

Fleurs et Rayures



No. 312 — B

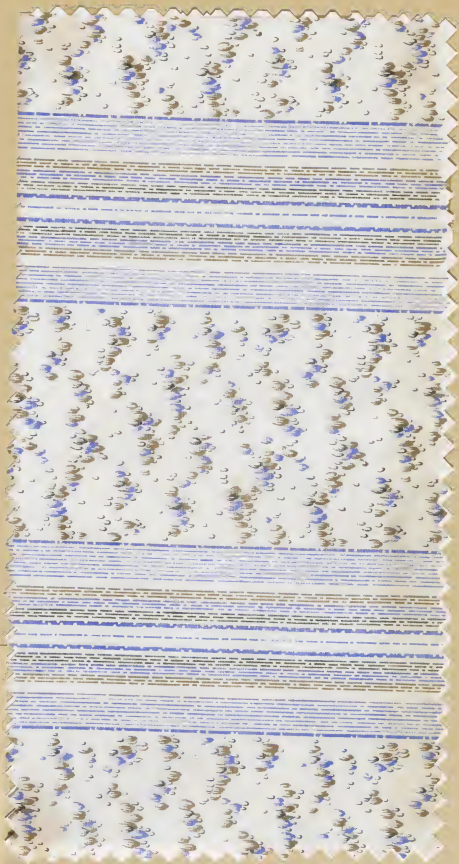
Gr.

Fleurs et Rayures



No. 313 — B
Gros

Fleurs et Rayures



No. 314 — B
Gae

Flowers et Rayures



No. 315 — B,
Gra

Fleurs et Rayures

Handwritten text on a strip of paper with a scalloped edge, likely a label or note, containing several lines of cursive script.



No. 316 - B
Gr

Fleurs & Rayures



No. 317 - B
Gr.

Fleurs et Rayures



No. 318 — B
Gr.

fleurs et Rayures



No. 319 - B
Gr.

Hewes et Rayures



No. 320 - B
Gr.

Flours et Rayures



No. 321 - B
Gra

Fleurs et Rayures



No. 322 — B.

Gr.

Heures et Rayures



No. 323 - B.

Gr.

Heurs et Rayures



No. 324 - B
Gra

Alvins et Raynes



No. 325 - B
Gra

Heurs et Rayures



No. 326 - B.
Gr.

Fleurs et Rayures



No. 327 — B

Gr.

Heurs et Rayures



No. 328 - B.
Grs

Hewes & Raynes



No. 329 - B
Gr.

Fleurs et Rayures



No. 330 - B.

Gr.

Heures et Rayures



No. 331 — B

Fleurs et Rayures



No. 332 - B.

Fleurs et Rayures



No. 333 - B
Gr.

Fleurs et Rayures



No. 334 - B

Gr.

Fleurs et Rayures



No. 335 - B

Gr.

Flours et Rayures



No. 336 - B
Gra

Fleurs et Rayures



No. 337 - B

Grav.

Heures et Rayures



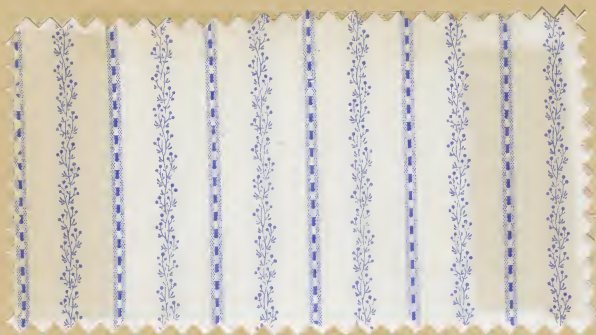
No. 338 - B
Grs

Fleurs et Roupures



No. 339 - B
Gr.

Fleurs et Rayures



No. 340 - B
Grs

Fleurs et Rayures



No. 341 - B

Yrs

Flowers et Rayures



No. 342 - B
Grs.

Fleurs et Rayures



No. 343 — B
Grs

Fleurs et Rayures



No. 344 - B
Gr.

Fleurs et Rayures



No. 345 - B
Yrs.

Flowers et Rayures



No. 346 - B
Yrs

Fleurs et Rayures



No. 347 — B

Gr.

Fleurs et Rayures



No. 348 - B

Gr.

fleurs et Rayures



No. 349 - B
Gr.

Heurs et Rayures



No. 350 — B
Gra

Heurs et Rayures



No. 351 - B

Les
Fleurs et Rayures



No. 352 — B
Gr.

Flours et Rayures



No. 353 - B
Gr.

Flewers & Rayures



No. 354 - B

Heurs et Rayures



No. 355 - B
Gr.

Fleurs et Rayures



No. 356 - B
Gr.

Fleurs et Rayures



No. 357 - B
Gr.

Fleurs et Rayures



No. 358- B
Gr

Fleurs et Rayures



No. 359 - B

Gr.

Fleurs et Rayures



No. 360 - B
Gr.

fleurs et rayures



No. 361 - B
Gr.

Fleurs et Rayures



No. 362 — B
Gra

fleurs et Rayures



No. 363 - B
Gr.

fleurs et Rayures



No. 364 - B
Gr

Fleurs et Rayures



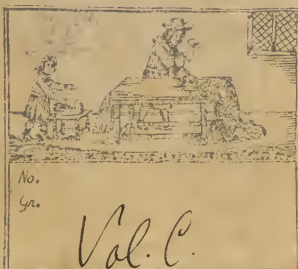
No. 365 - B,
Gr.

Fleurs et Rayures



No. 366 - B

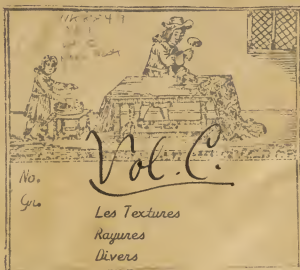
Gr
Fleurs et Raquettes



No.

Geo.

Vol. C.



The
Mary Ann Beinecke
Decorative Art
Collection

STERLING
AND FRANCINE
CLARK
ART INSTITUTE
LIBRARY



No.

12

Les Textures

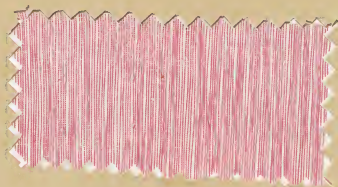




No. 377 - C

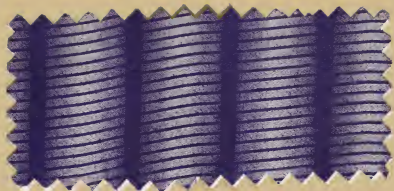
Gr

Les Textures



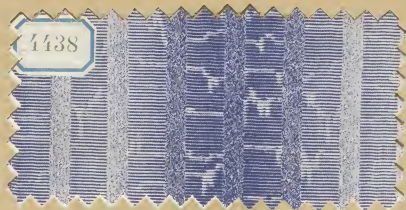
No. 378 — C
Gr

Les Textures



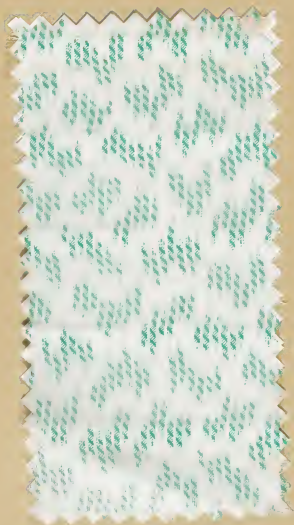
No. 379 - C
Grs

Les Textures



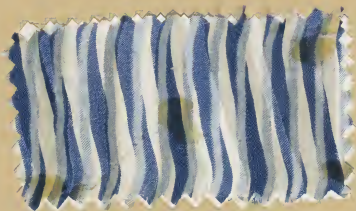
No. 380 - C
Gra

Les textures



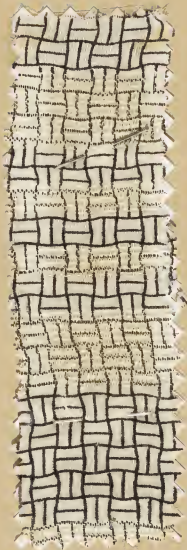
No. 380 - C

Les Textures



No. 381 - C
Gr.

Les Textures



No. 382 - C
Gr.

Les Textures



No. 383 - c
Gr.

Les Textures



No. 384 - C
Gr.

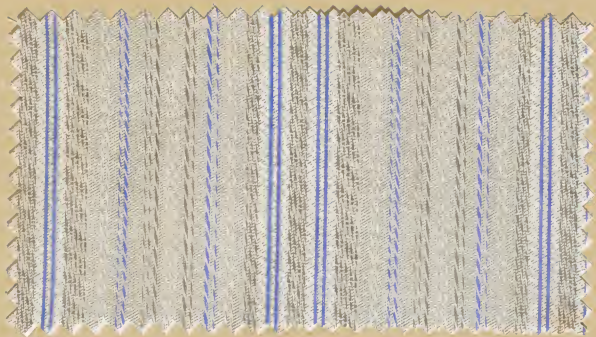
Les Textures



No. 385—C
Grs

Les Textures

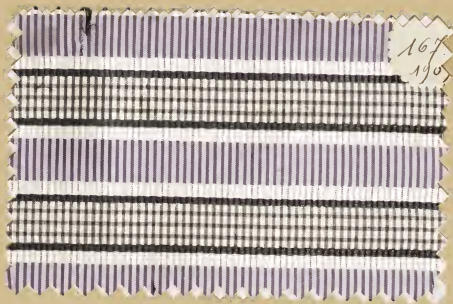




No. 387 - C

Gr.

Les Textures



No. 388 — C

Gr.

Les Textures



No. 389 — C
Gr.
Les Textures



No.

Gr.

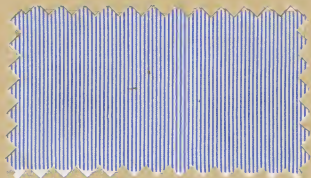
390 - C

Les Textures



No. 391 — C
Grs.

Les Textures



No. 392 - C
Gr.

Les Textures



No. 393 - C

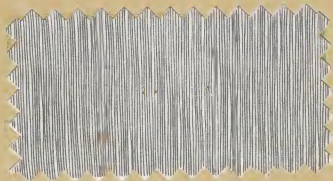
Gr.

Les Textures



No. 394 — C

Les Textures



No. 395 - C
Gr

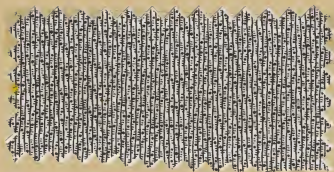
Les Textures



No. 396 — C

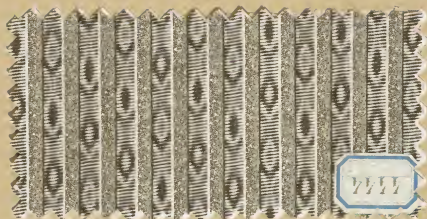
Gr.

Les Texture



No. 397 - C
Grs

Los Textures





No. 399 - c

Gr

Les Textures

4826



No.
Gra

400-c

Les Textures





No.
Gr.

402 - C

Les Textures



No. 403 - C
Gr.

Les Textures





No. 405 - c

Grs

Les Textures

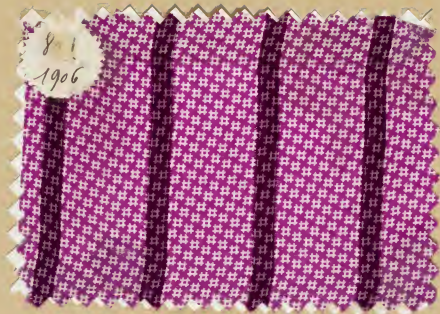




No. 407- C
Gr.

Les Textures

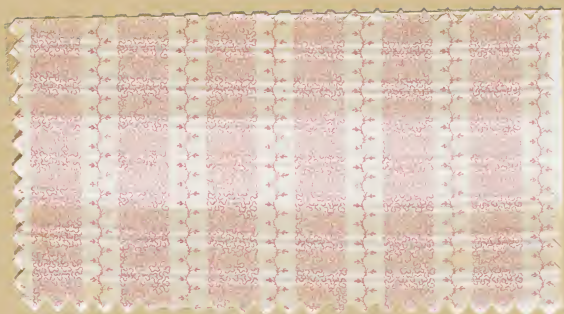




No. 409 - C

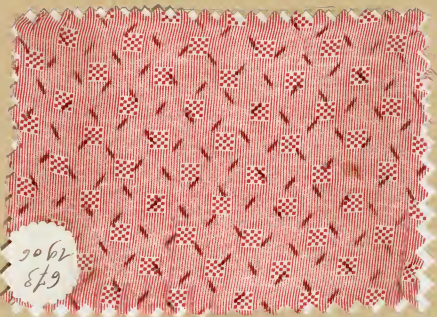
Grs

Les Textures



No. 500 - C
Grs

Les Textures



No. 501 - C

Yrs

Les Textures



No. 502 - c

Gr.

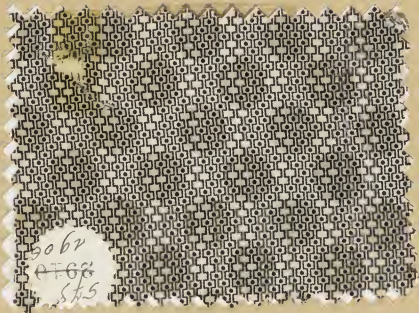
Les Vestures



No. 503 - C

Gr.

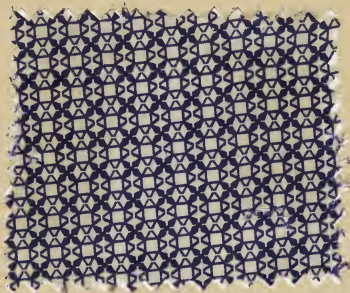
Les Textures



No. 504 - c

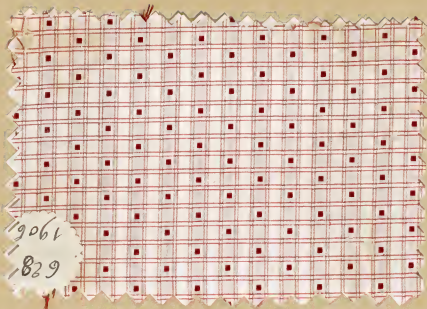
Gr.

Les Textures



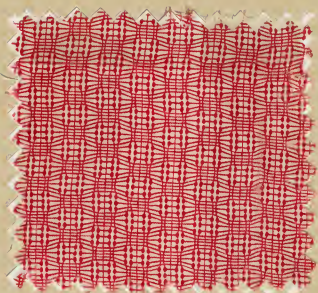
No. 505 - C
Gra

Les Textures



No. 506 - c
Grs

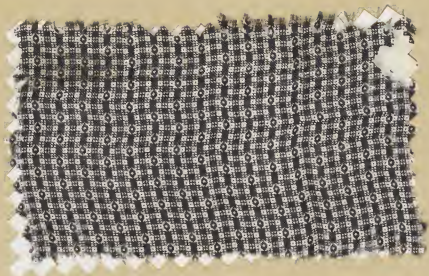
Les Textures



No. 507 - C

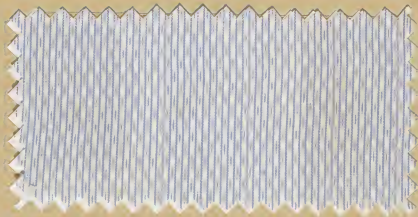
Gra

Les Textures



No. 508 - C
Gr.

Les Textures



No. 509 - c
Gr.

Les Textures



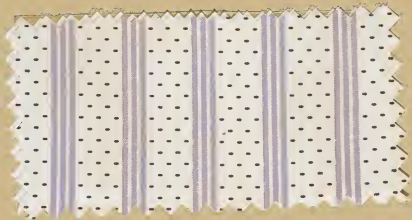


No.

Gr.

Raynes





No. 511 - C

Gr

Raynes



No. 512 - C
Grs

Raynes



No. 513 - C

Gr

Raynes



No. 514 - C

Grs

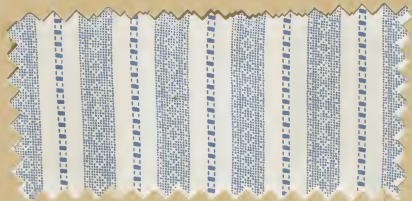
Rayures



No. 515 — C

Gr.

Raynes



No. 516 - C

Gr.

Rayures

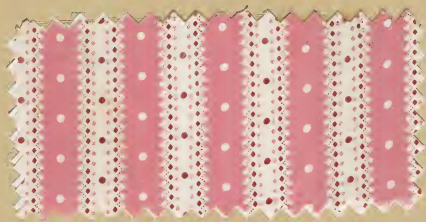


No. 512 - c
Gr
Rayures



No. 518 — C
Gr.

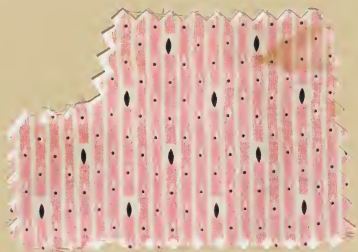
Rayures



No. 519 — C

Gr.

Raynes



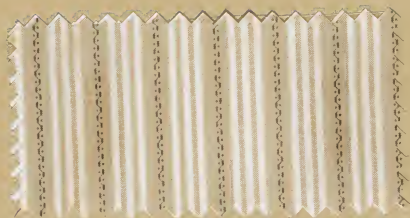
No. 520 — C

Gr

Rayures



No. 521 - C
Rayures



No. 522-C

Gr.

Raynes





No. 524 - c

Gr.

Rayures



No. 525- C
Gr.

Rayes



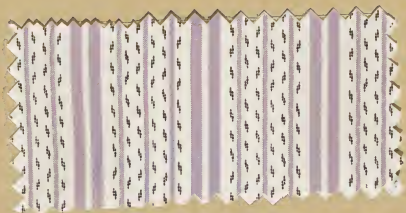
No. 526 - C
Gr.

Raynes



No. 527 - c
Gr.

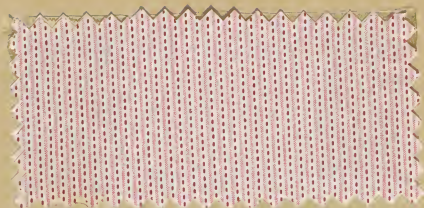
Raynes





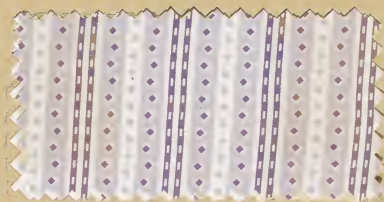
No. 529 - C
Gr.

Rapures



No. 530 — C
Gr.

Rayures



No. 531- C
Gr.

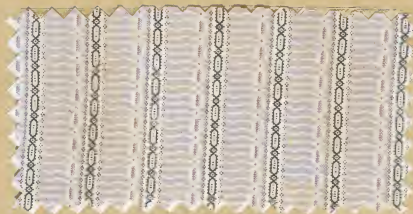
Raywell





No. 534 — C
Grs

Rayures



No. 535 - C

Gr.
Rayures



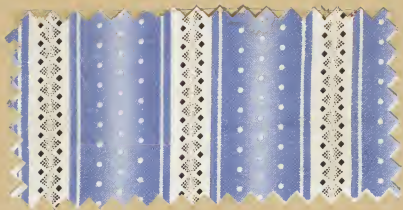
No. 536 — C
Grs
Rayures



No. 537 - C

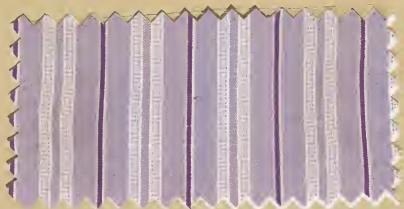
Gr.

Rayures



No. 538 - c
Gr.

Rayures



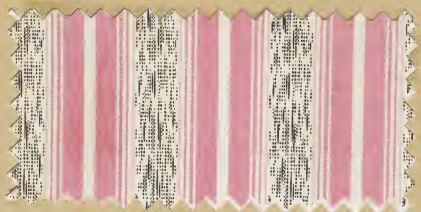
No. 539 - C

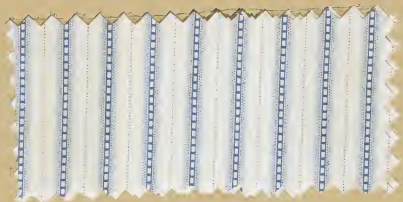
Gr

Rayures

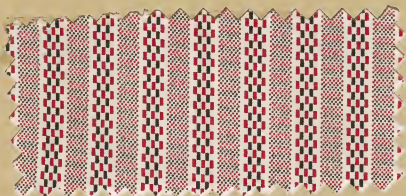


No. 540 - C
Gr. Rayures



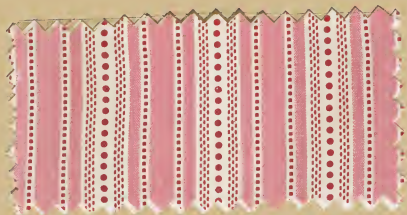


No. 542 - C
Grs
Rayures



No. 543 — C
Gr

Rayures



No. 544 - C

Gr.

Ragvres



No. 545 — C

Yrs

Rayures



No. 546 - C

Gr.

Raynes





No. 548 - c

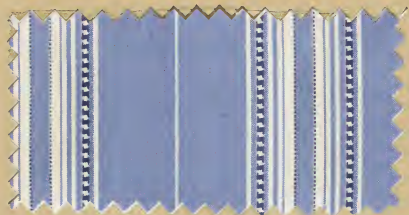
Gr. *Rapures*



No. 549 — c

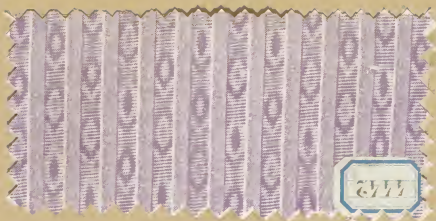
Gr.

Raynes



No. 550 - C
Gr.

Raynes



No.
Gr.

551 - C

Rayures



No. 552 - C

Grs.

Raywell

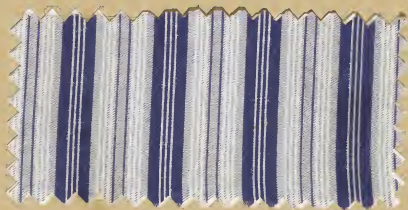


No.

553- C

Gr.

Raynes

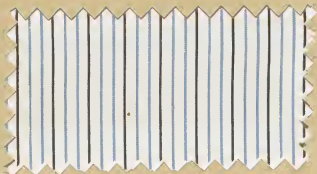


No. 554 - C

Gr.

Rayures

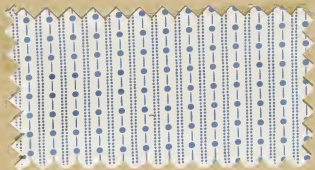




No. 556 - C

Gr.

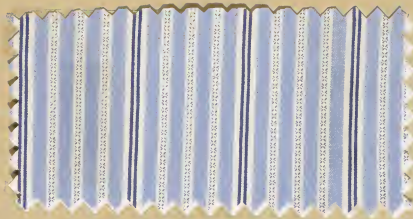
Raynes

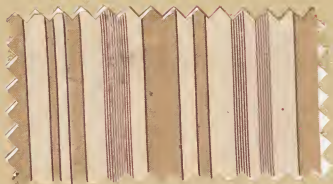
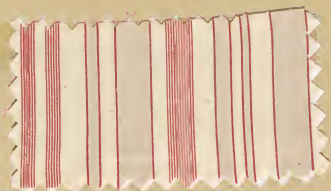
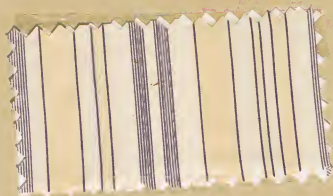


No. 557 - C

Yes

Raynes





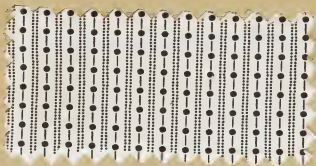
No. 559 - C

Gr.

Rayures



No. 560 - C
Gr
Rayures



No. 561 - C

Gr

Rayures



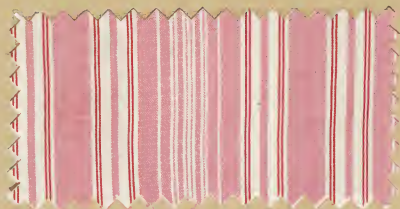
No. 562 - C
Gra

Rayures



No. 563 - C
Gra
Raynes





No. 565 - C

Gra.

Rayures



No. 566 - C
Yrs

Rayures

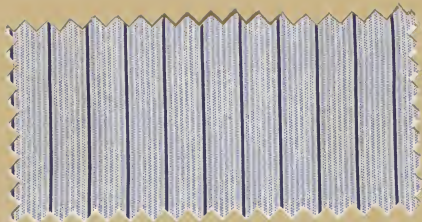


No.
Gr.

567 - C
Rayures

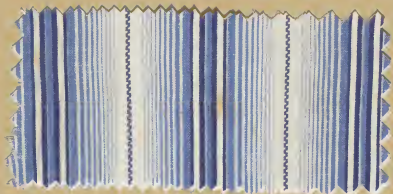


No. 568 — C
Gr. Rayures





No. 520 - C
Gr. Rayures



No.
Gr.

521 - C

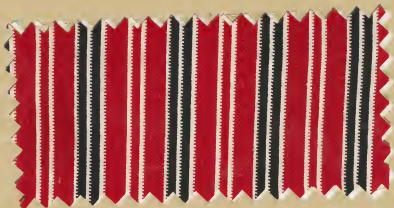
Rayures



No.
Gra.

572 - C

Rayures



No. 523 - c
Gr.

Rayures









No. 577—C

Gr.

Rayures





No. 579 - C
Gra

Raynes



No. 580 - C

Gr.

Rayures



No. 581 - C

Gr. Rayures

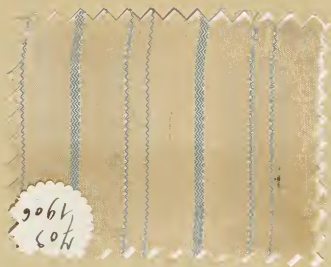


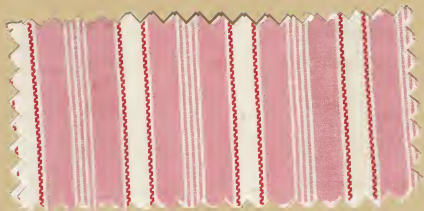
No.

Gr.

582 - c

Rayures





No.

Gr.

584 - C

Rayures



No.

Geo

Rivers





No. 585 - C

Yrs
Divers



No.

586 - C

Gr.

Divers



No. 587 - C

Gr.

Divers



No. 588 - c
Gr.

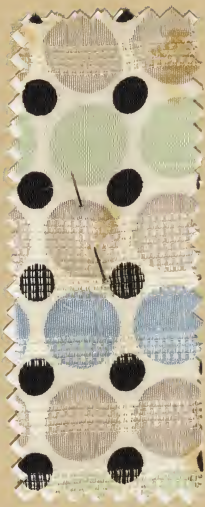
Divers



No.
Gr.

589 - C

Livers



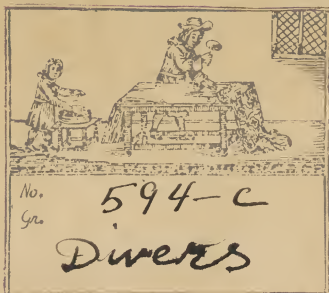
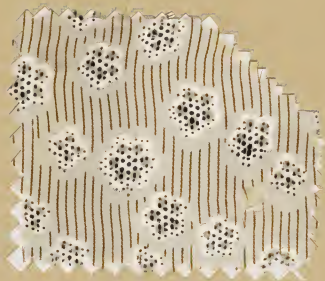






No.
Gr.

593-C
Divers

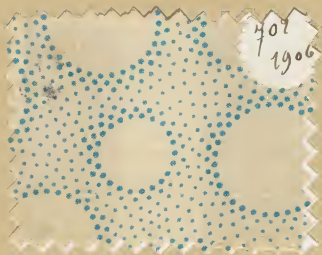


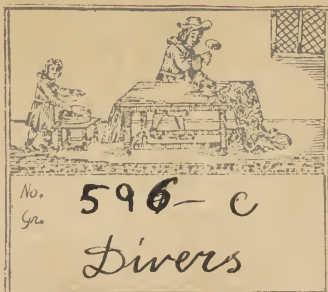
No.

594-C

Gr.

Divers







No. 597-c
Yrs
Diners

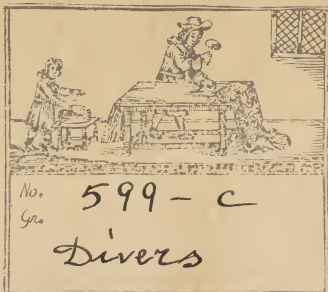


No.

598 - c

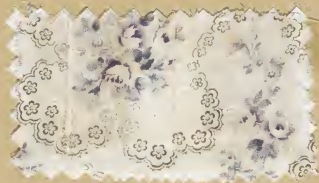
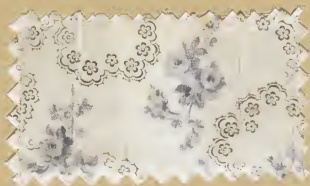
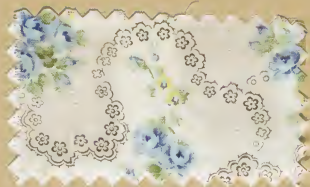
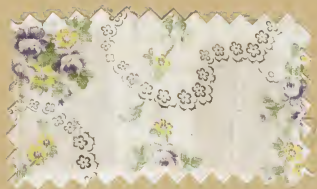
Gr.

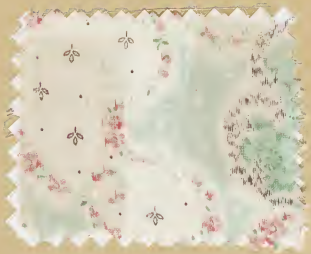
Divers





No. 600 - c
Gr. DIVERS





No.
Gr.

602-C

Divers



No. 603
Gr. Divers



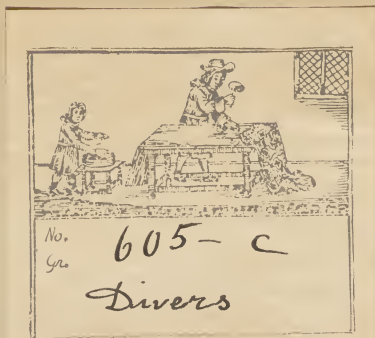
1057
775-4



No.
Gr.

604-c

Divers



No.
Gra

605-c

Divers



No.
Gr.

606 - c

Divers



No.

607-C

Gr.

Divers